

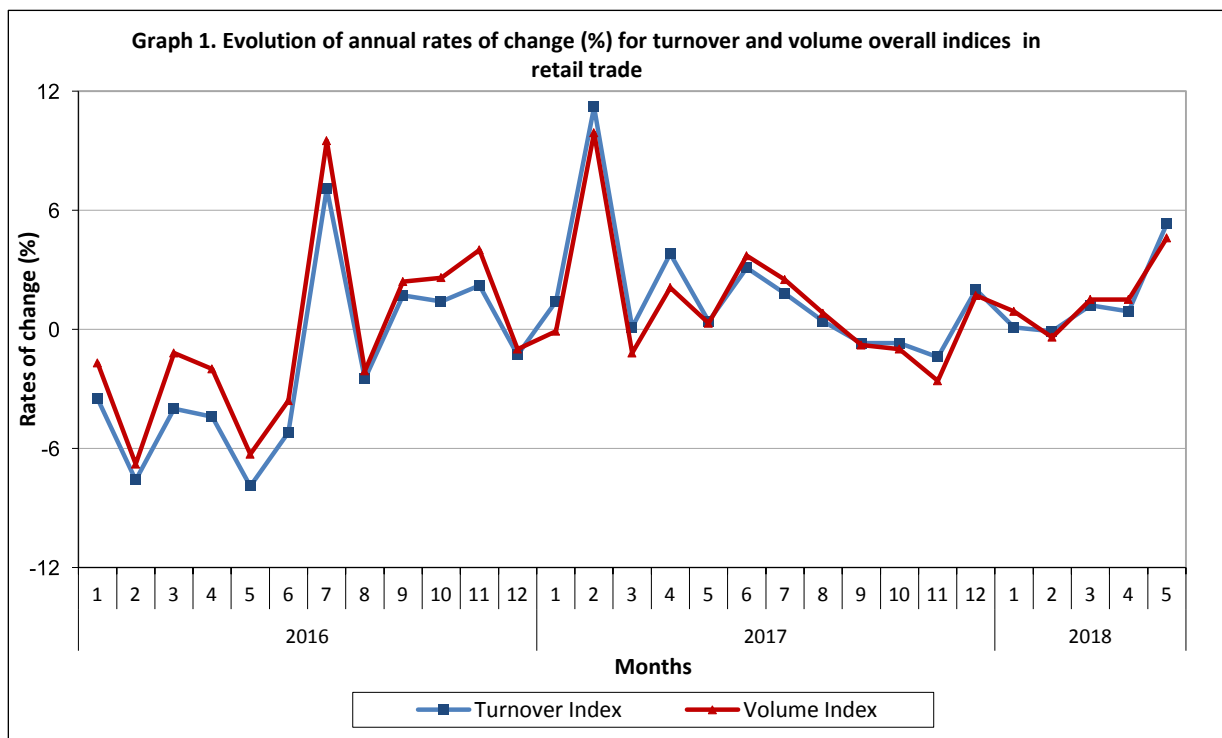


PRESS RELEASE

TURNOVER INDEX IN RETAIL TRADE: May 2018, y-o-y increase 5.3%

The Hellenic Statistical Authority announces the turnover and volume indices in retail trade with base year 2010 =100.0 for May 2018 according to provisional and reduced data to a typical month as follows:

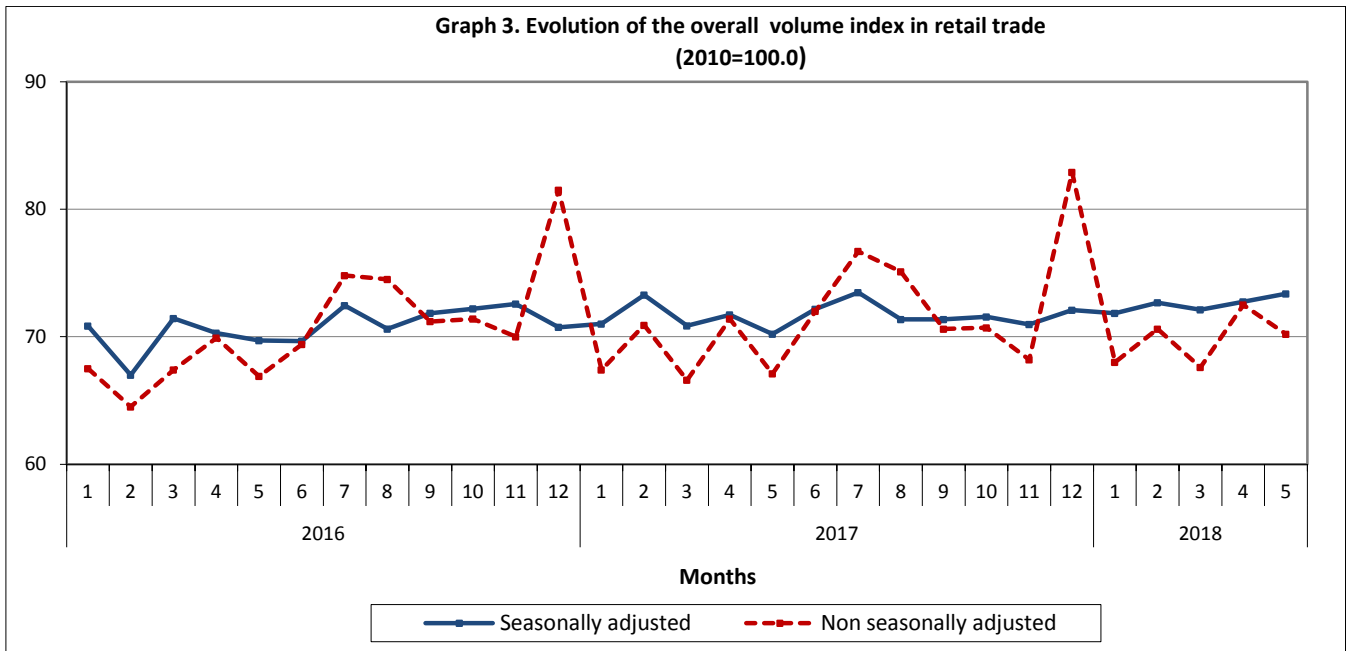
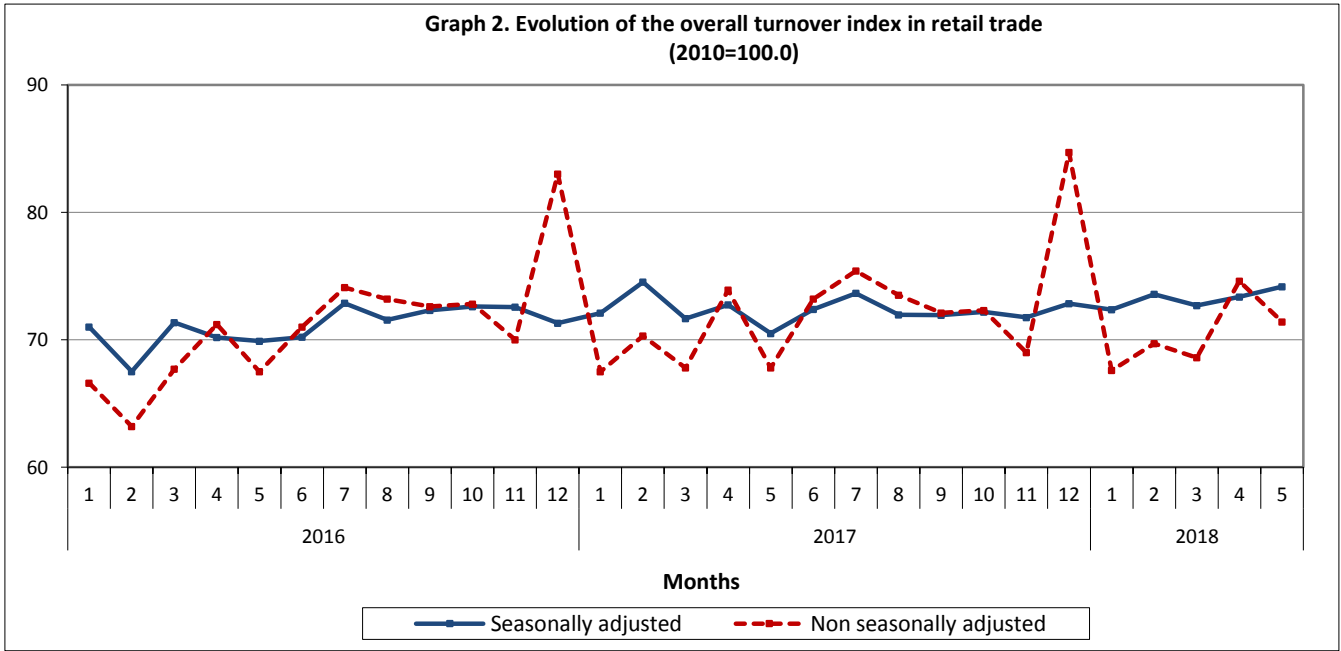
- The overall turnover index in retail trade in May 2018 increased by 5.3% compared with the corresponding index of May 2017, while compared with the corresponding index of April 2018 decreased by 4.3% (Tables 1, 2).
- The overall volume index in retail trade (i.e. turnover in retail trade at constant prices) in May 2018 increased by 4.6% compared with the corresponding index of May 2017, while compared with the corresponding index of April 2018 decreased by 3.2% (Tables 1, 2).
- The seasonally adjusted overall turnover index in May 2018 compared with the corresponding index of April 2018 increased by 1.1% (Table 5).
- The seasonally adjusted overall volume index in May 2018 compared with the corresponding index of April 2018 increased by 0.9% (Table 5).



Information

Economic and Short-Term Indicators Division
Retail Sales Value Index
Ioannis Nikolaidis
Tel: +30 213 135 2127
Fax: +30 213 135 2729
E-mail: ret.sal@statistics.gr

Graphs 2 and 3 depict the evolution of both seasonally and non seasonally adjusted overall indices for turnover and volume, respectively, in retail trade.



It should be noted that the whole series with seasonally adjusted indices are recalculated every time a new observation is added in time series. Therefore, the seasonally adjusted data differ from the published data of the previous Press Release.

1. Annual comparison of the turnover index

(Turnover at current prices)

The 5.3% increase of the turnover index in May 2018 compared with the corresponding index in May 2017 is mainly due to the changes in the following store categories:

Specialized store categories	Annual rate of change %
Automotive fuel	9.7
Supermarkets	7.9
Furniture, electrical equipment, household equipment	5.8
Pharmaceutical products, cosmetics	3.5
Books, Stationery, other goods	-1.1

2. Annual comparison of the volume index

(Turnover at constant prices)

The 4.6% increase of the volume index in May 2018 compared with the corresponding index in May 2017 is mainly due to the changes in the following store categories:

Specialized store categories	Annual rate of change %
Supermarkets	7.6
Furniture, electrical equipment, household equipment	7.2
Pharmaceutical products, cosmetics	3.6
Automotive fuel	2.8
Books, Stationery, other goods	0.0

Table 1. Annual rates of change of turnover index and volume index in retail trade
(Reduced data on the basis of a typical month)

Base year: 2010=100.0

Retail Trade Store Categories	Turnover Index			Volume Index		
	May 2018*	May 2017	Annual rate of change (%)	May 2018*	May 2017	Annual rate of change (%)
Overall Index	71.4	67.8	5.3	70.2	67.1	4.6
Overall Index except automotive fuel	72.9	69.6	4.7	73.2	70.0	4.6
I. Main store categories						
Food sector	80.9	75.9	6.6	76.6	72.2	6.1
Automotive fuel	66.8	60.9	9.7	58.7	57.1	2.8
Non-food sector except automotive fuel	64.6	63.1	2.4	70.9	68.8	3.1
II. Specialized store categories						
Supermarkets	84.3	78.1	7.9	82.3	76.5	7.6
Department stores	76.1	73.1	4.1	88.2	84.0	5.0
Automotive fuel	66.8	60.9	9.7	58.7	57.1	2.8
Food, beverages, tobacco	62.3	63.0	-1.1	58.1	59.2	-1.9
Pharmaceutical products, cosmetics	62.4	60.3	3.5	66.7	64.4	3.6
Clothing and footwear	66.8	66.2	0.9	73.7	72.2	2.1
Furniture, electrical equipment, household equipment	54.9	51.9	5.8	68.1	63.5	7.2
Books, Stationery, other goods	83.4	84.3	-1.1	95.1	95.1	0.0
Retail sales not in stores	74.6	58.9	26.7	:	:	:

* Provisional data.

: Volume Index for the "Retail sale not in stores" is not calculated.

Table 2. Monthly rates of change of turnover index and volume index in retail trade
(Reduced data on the basis of a typical month)

Base year: 2010=100.0

Retail Trade Store Categories	Turnover Index			Volume Index		
	May 2018*	April 2018	Monthly rate of change (%)	May 2018*	April 2018	Monthly rate of change (%)
Overall Index	71.4	74.6	-4.3	70.2	72.5	-3.2
Overall Index except automotive fuel	72.9	76.4	-4.6	73.2	75.5	-3.0
I. Main store categories						
Food sector	80.9	85.8	-5.7	76.6	81.4	-5.9
Automotive fuel	66.8	69.0	-3.2	58.7	62.6	-6.2
Non-food sector except automotive fuel	64.6	66.8	-3.3	70.9	70.5	0.6
II. Specialized store categories						
Supermarkets	84.3	89.1	-5.4	82.3	87.1	-5.5
Department stores	76.1	75.4	0.9	88.2	82.9	6.4
Automotive fuel	66.8	69.0	-3.2	58.7	62.6	-6.2
Food, beverages, tobacco	62.3	67.8	-8.1	58.1	63.3	-8.2
Pharmaceutical products, cosmetics	62.4	64.2	-2.8	66.7	69.2	-3.6
Clothing and footwear	66.8	72.9	-8.4	73.7	70.7	4.2
Furniture, electrical equipment, household equipment	54.9	52.9	3.8	68.1	64.6	5.4
Books, Stationery, other goods	83.4	89.1	-6.4	95.1	101.2	-6.0
Retail sales not in stores	74.6	73.1	2.1	:	:	:

* Provisional data.

: Volume Index for the "Retail sale not in stores" is not calculated.

Table 3. Evolution of the turnover index in retail trade
(Reduced data on the basis of a typical month)

Base year: 2010=100.0

Year and month	Overall Index		Overall index except automotive fuel		Food sector		Automotive fuel sector		Non-food sector except automotive fuel		
	Index	Annual rate of change (%)	Index	Annual rate of change (%)	Index	Annual rate of change (%)	Index	Annual rate of change (%)	Index	Annual rate of change (%)	
2016:	1	66.6	-3.5	67.9	-1.7	73.6	-2.4	61.8	-11.0	62.0	-0.8
	2	63.2	-7.6	65.2	-5.4	71.9	-5.8	55.5	-17.2	58.1	-4.9
	3	67.7	-4.0	69.7	-1.8	79.2	0.3	59.8	-14.0	59.9	-4.3
	4	71.2	-4.4	74.1	-2.0	81.4	-3.0	59.5	-16.0	66.4	-0.7
	5	67.5	-7.9	69.4	-6.0	75.0	-7.6	60.0	-17.0	63.4	-3.9
	6	71.0	-5.2	72.9	-2.3	81.7	-3.0	63.5	-18.2	63.7	-1.4
	7	74.1	7.1	75.8	8.0	83.1	5.3	67.1	2.3	68.2	11.6
	8	73.2	-2.5	74.9	-0.7	87.2	-1.8	66.4	-11.2	62.2	1.3
	9	72.6	1.7	74.8	2.3	82.3	2.4	63.5	-2.3	67.0	2.4
	10	72.8	1.4	74.6	1.8	82.5	3.4	65.7	-0.2	66.4	-0.3
	11	70.0	2.2	71.7	3.5	75.7	3.4	63.2	-3.4	67.2	3.2
	12	83.0	-1.3	85.9	-1.7	88.4	-0.6	71.4	1.0	82.9	-3.2
Average		71.1	-2.1	73.1	-0.5	80.2	-0.7	63.1	-9.2	65.6	-0.2
2017:	1	67.5	1.4	67.6	-0.4	74.2	0.8	67.8	9.7	60.7	-2.1
	2	70.3	11.2	70.9	8.7	80.4	11.8	68.9	24.1	61.1	5.2
	3	67.8	0.1	68.6	-1.6	75.9	-4.2	65.4	9.4	61.0	1.8
	4	73.9	3.8	75.7	2.2	84.3	3.6	67.1	12.8	66.8	0.6
	5	67.8	0.4	69.6	0.3	75.9	1.2	60.9	1.5	63.1	-0.5
	6	73.2	3.1	75.1	3.0	82.1	0.5	66.1	4.1	67.7	6.3
	7	75.4	1.8	77.4	2.1	83.7	0.7	68.2	1.6	70.7	3.7
	8	73.5	0.4	74.6	-0.4	85.6	-1.8	69.9	5.3	63.3	1.8
	9	72.1	-0.7	73.9	-1.2	81.9	-0.5	65.9	3.8	65.4	-2.4
	10	72.3	-0.7	73.3	-1.7	78.7	-4.6	69.4	5.6	67.5	1.7
	11	69.0	-1.4	70.0	-2.4	70.7	-6.6	66.2	4.7	69.0	2.7
	12	84.7	2.0	87.7	2.1	89.0	0.7	73.5	2.9	86.1	3.9
Average		72.3	1.7	73.7	0.8	80.2	0.0	67.4	6.8	66.9	2.0
2018:	1	67.6	0.1	67.6	0.0	72.7	-2.0	69.4	2.4	62.2	2.5
	2	69.7	-0.9	70.5	-0.6	80.0	-0.5	68.1	-1.2	60.8	-0.5
	3	68.6	1.2	70.2	2.3	77.8	2.5	63.4	-3.1	62.4	2.3
	4	74.6	0.9	76.4	0.9	85.8	1.8	69.0	2.8	66.8	0.0
	*5	71.4	5.3	72.9	4.7	80.9	6.6	66.8	9.7	64.6	2.4

* Provisional data.

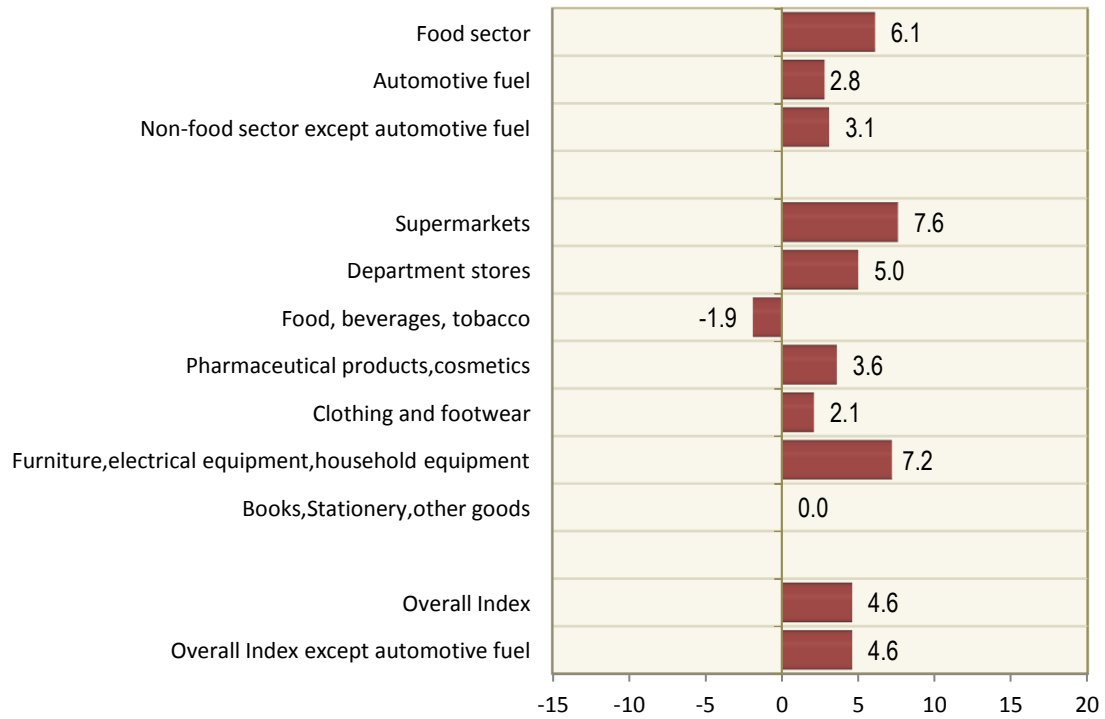
Table 4. Evolution of the volume index in retail trade
(Reduced data on the basis of a typical month)

Base year: 2010=100.0

Year and month	Overall Index		Overall index except automotive fuel		Food sector		Automotive fuel sector		Non-food sector except automotive fuel	
	Index	Annual rate of change (%)	Index	Annual rate of change (%)	Index	Annual rate of change (%)	Index	Annual rate of change (%)	Index	Annual rate of change (%)
2016:										
1	67.5	-1.7	69.1	-0.1	69.9	-2.4	65.0	-8.6	69.1	3.0
2	64.5	-6.8	66.7	-5.5	68.6	-5.0	60.1	-8.7	65.4	-6.4
3	67.4	-1.2	69.4	-0.1	75.5	1.8	63.6	-3.0	62.9	-2.5
4	69.9	-2.0	72.9	-0.4	77.8	-1.1	61.9	-6.2	67.7	0.3
5	66.9	-6.3	69.2	-5.3	71.6	-6.9	61.1	-7.6	66.9	-3.3
6	69.4	-3.6	71.8	-1.5	78.0	-1.9	63.2	-10.4	65.2	-0.9
7	74.8	9.5	77.4	9.6	79.0	4.9	67.5	13.4	76.7	16.6
8	74.5	-2.1	77.0	-1.0	82.7	-2.2	67.4	-4.7	71.5	1.6
9	71.2	2.4	73.9	3.1	78.6	3.6	63.8	-0.5	69.2	2.8
10	71.4	2.6	73.7	3.1	78.8	4.5	65.1	-1.4	68.5	1.5
11	70.0	4.0	72.4	5.5	72.8	5.1	62.9	-4.8	72.6	6.1
12	81.5	-1.0	85.3	-0.7	84.8	0.1	69.3	-4.0	86.1	-1.6
Average	70.8	-0.6	73.2	0.4	76.5	0.0	64.2	-4.2	70.1	1.2
2017:										
1	67.4	-0.1	68.8	-0.4	70.0	0.1	62.2	-4.3	68.7	-0.6
2	70.9	9.9	72.9	9.3	75.9	10.6	63.2	5.2	71.2	8.9
3	66.6	-1.2	68.4	-1.4	71.8	-4.9	60.6	-4.7	65.7	4.5
4	71.4	2.1	74.3	1.9	79.4	2.1	61.8	-0.2	69.7	3.0
5	67.1	0.3	70.0	1.2	72.2	0.8	57.1	-6.5	68.8	2.8
6	72.0	3.7	74.8	4.2	78.7	0.9	63.2	0.0	71.4	9.5
7	76.7	2.5	79.9	3.2	80.0	1.3	65.8	-2.5	81.4	6.1
8	75.1	0.8	77.5	0.6	81.6	-1.3	66.7	-1.0	74.8	4.6
9	70.6	-0.8	73.3	-0.8	77.9	-0.9	62.2	-2.5	69.4	0.3
10	70.7	-1.0	72.7	-1.4	75.0	-4.8	65.3	0.3	71.1	3.8
11	68.2	-2.6	70.3	-2.9	67.3	-7.6	61.2	-2.7	75.3	3.7
12	82.9	1.7	87.1	2.1	84.8	0.0	67.8	-2.2	91.5	6.3
Average	71.6	1.1	74.2	1.4	76.2	-0.4	63.1	-1.7	73.3	4.6
2018:										
1	68.0	0.9	69.4	0.9	68.8	-1.7	63.5	2.1	72.0	4.8
2	70.6	-0.4	72.8	-0.1	75.8	-0.1	62.5	-1.1	71.6	0.6
3	67.6	1.5	70.3	2.8	73.8	2.8	58.6	-3.3	68.1	3.7
4	72.5	1.5	75.5	1.6	81.4	2.5	62.6	1.3	70.5	1.1
*5	70.2	4.6	73.2	4.6	76.6	6.1	58.7	2.8	70.9	3.1

* Provisional data.

Graph 4. Annual rate of change (%) of the volume indices in retail trade for May 2018/2017



Graph 5. Monthly rate of change (%) of the volume indices in retail trade for May 2018 / April 2018

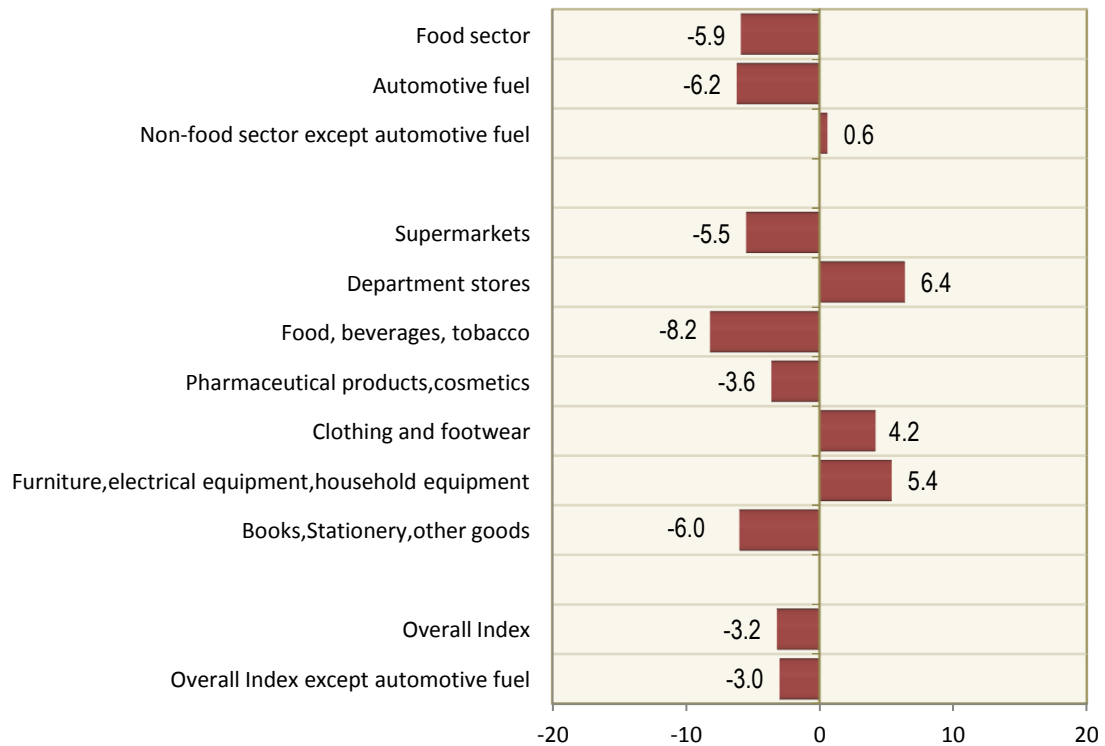


Table 5. Monthly rates of change of seasonally adjusted turnover and volume Index

Base year: 2010=100.0

Retail Trade Store Categories	Turnover Index			Volume Index		
	May 2018	April 2018	Monthly rate of change (%)	May 2018	April 2018	Monthly rate of change (%)
Overall Index	74.2	73.4	1.1	73.4	72.7	0.9
Overall Index except automotive fuel	75.7	74.7	1.4	76.2	75.4	1.1
I. Main store categories						
Food sector	83.6	82.3	1.6	79.1	78.6	0.7
Automotive fuel	70.0	69.7	0.4	62.5	63.6	-1.7
Non-food sector except automotive fuel	67.3	66.6	1.0	74.8	74.1	1.0
II. Specialized store categories						
Supermarkets	87.1	86.0	1.3	85.2	84.7	0.6
Department stores	76.3	74.5	2.4	89.2	86.9	2.6
Automotive fuel	70.0	69.7	0.4	62.5	63.6	-1.7
Food, beverages, tobacco	64.0	62.6	2.2	59.7	58.8	1.6
Pharmaceutical products, cosmetics	63.4	63.3	0.1	68.3	68.5	-0.3
Clothing and footwear	69.3	68.0	1.9	79.5	78.2	1.6
Furniture, electrical equipment, household equipment	56.4	56.2	0.4	69.9	69.5	0.5
Books, Stationery, other goods	93.1	91.7	1.5	106.1	104.4	1.6
Retail sales not in stores	72.2	68.2	5.8	:	:	:

: Volume Index for the "Retail sale not in stores" is not calculated.

Table 6. Monthly evolution of the seasonally adjusted turnover Index

Base year: 2010=100.0

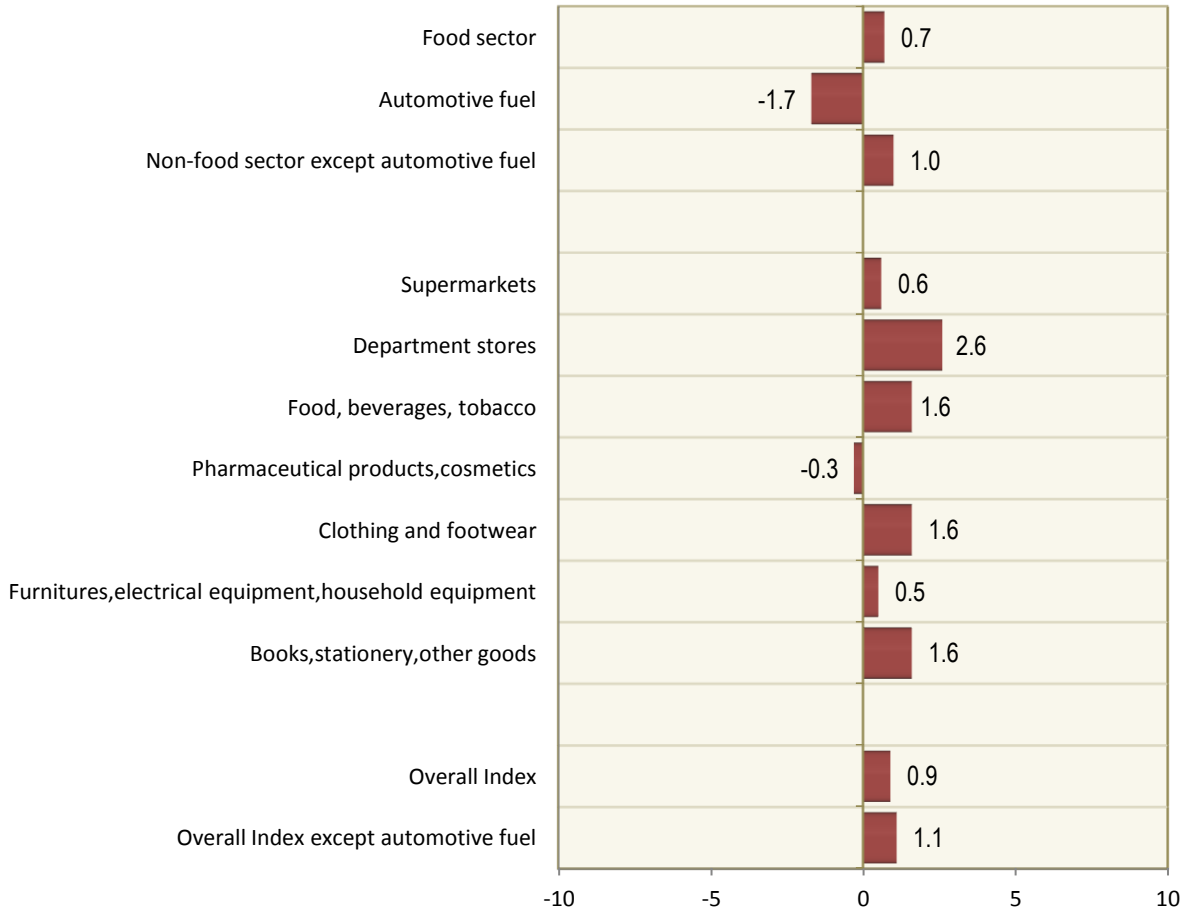
Year and month	Overall Index		Overall index except automotive fuel		Food sector		Automotive fuel sector		Non-food sector except automotive fuel	
	Index	Monthly rate of change (%)	Index	Monthly rate of change (%)	Index	Monthly rate of change (%)	Index	Monthly rate of change (%)	Index	Monthly rate of change (%)
2016:										
1	71.0	-1.7	73.3	-0.6	80.2	0.5	62.3	-6.7	66.2	-1.7
2	67.5	-4.9	70.1	-4.3	76.2	-5.0	58.0	-6.9	63.7	-3.8
3	71.3	5.7	73.6	4.9	81.7	7.2	62.1	7.0	65.3	2.5
4	70.2	-1.6	72.5	-1.5	79.0	-3.4	60.7	-2.2	65.7	0.7
5	69.9	-0.4	72.0	-0.7	77.9	-1.3	63.0	3.8	65.6	-0.2
6	70.2	0.5	72.2	0.2	79.6	2.1	62.4	-0.9	64.5	-1.6
7	72.9	3.8	74.4	3.1	81.6	2.5	66.4	6.4	65.6	1.6
8	71.5	-1.8	73.5	-1.2	80.6	-1.2	63.2	-4.9	66.4	1.2
9	72.3	1.1	74.2	1.0	81.2	0.7	64.1	1.4	67.2	1.2
10	72.6	0.4	74.5	0.4	82.8	2.0	64.9	1.4	65.9	-1.8
11	72.6	0.0	74.7	0.3	82.7	-0.2	64.1	-1.3	66.5	0.9
12	71.3	-1.7	72.7	-2.7	79.9	-3.4	67.1	4.6	65.2	-2.0
Average	71.1		73.1		80.3		63.2		65.6	
2017:										
1	72.1	1.1	73.4	1.0	81.2	1.7	67.7	0.9	65.2	0.1
2	74.5	3.4	75.6	3.0	83.6	3.0	70.7	4.4	67.1	2.9
3	71.7	-3.8	72.8	-3.7	79.0	-5.6	67.9	-3.9	66.3	-1.1
4	72.7	1.5	74.1	1.8	81.3	2.9	68.1	0.2	66.4	0.1
5	70.5	-3.1	72.5	-2.1	79.0	-2.8	64.2	-5.7	65.6	-1.2
6	72.4	2.7	74.2	2.3	80.1	1.4	65.6	2.2	68.2	4.0
7	73.7	1.7	75.1	1.2	81.4	1.6	67.4	2.8	67.7	-0.8
8	72.0	-2.3	73.4	-2.3	79.5	-2.3	67.1	-0.5	67.4	-0.5
9	71.9	0.0	73.5	0.1	80.6	1.4	66.7	-0.5	65.8	-2.2
10	72.2	0.3	73.4	-0.1	79.4	-1.6	68.6	2.8	67.1	1.9
11	71.7	-0.6	73.3	-0.2	78.2	-1.5	67.3	-1.8	68.0	1.3
12	72.8	1.5	74.4	1.5	80.7	3.2	69.2	2.8	67.6	-0.5
Average	72.4		73.8		80.3		67.5		66.9	
2018:										
1	72.4	-0.6	73.8	-0.8	80.0	-0.8	69.1	-0.2	67.0	-0.9
2	73.6	1.7	74.8	1.4	82.3	2.8	69.4	0.4	66.8	-0.2
3	72.7	-1.2	74.6	-0.2	81.3	-1.2	66.3	-4.5	67.7	1.3
4	73.4	0.9	74.7	0.1	82.3	1.2	69.7	5.2	66.6	-1.6
5	74.2	1.1	75.7	1.4	83.6	1.6	70.0	0.4	67.3	1.0

Table 7. Monthly evolution of the seasonally adjusted volume Index

Base year: 2010=100.0

Year and month	Overall Index		Overall index except automotive fuel		Food sector		Automotive fuel sector		Non-food sector except automotive fuel		
	Index	Monthly rate of change (%)	Index	Monthly rate of change (%)	Index	Monthly rate of change (%)	Index	Monthly rate of change (%)	Index	Monthly rate of change (%)	
2016:	1	70.8	-0.7	73.5	0.1	76.4	1.1	64.3	-4.1	70.7	-0.7
	2	67.0	-5.4	69.7	-5.2	72.7	-4.9	61.9	-3.7	67.7	-4.3
	3	71.4	6.6	73.9	6.0	78.3	7.7	65.7	6.1	69.4	2.5
	4	70.3	-1.6	72.9	-1.3	75.9	-3.1	63.6	-3.1	70.1	1.1
	5	69.7	-0.8	71.8	-1.4	74.0	-2.5	65.0	2.3	69.7	-0.6
	6	69.7	-0.1	72.2	0.5	75.9	2.6	63.1	-3.0	69.1	-0.9
	7	72.4	4.0	74.6	3.4	77.4	1.9	67.7	7.3	70.4	1.8
	8	70.6	-2.5	73.1	-2.0	76.5	-1.2	64.4	-4.9	70.5	0.3
	9	71.8	1.8	74.4	1.8	77.5	1.4	64.4	0.1	71.5	1.4
	10	72.2	0.5	74.8	0.5	79.2	2.1	64.1	-0.5	70.8	-1.0
	11	72.6	0.5	75.5	0.9	79.1	-0.1	63.4	-1.1	71.9	1.6
	12	70.7	-2.5	73.1	-3.1	76.1	-3.8	64.4	1.7	70.4	-2.2
Average		70.8		73.3		76.6		64.3		70.2	
2017:	1	71.0	0.4	73.5	0.6	76.9	1.0	62.0	-3.8	71.0	0.8
	2	73.3	3.2	75.7	3.0	79.4	3.2	64.6	4.2	73.3	3.4
	3	70.9	-3.3	73.1	-3.4	74.9	-5.7	63.0	-2.5	72.3	-1.4
	4	71.7	1.2	74.3	1.6	77.0	2.8	63.2	0.3	72.6	0.4
	5	70.2	-2.1	73.0	-1.6	74.8	-2.8	61.1	-3.4	72.5	-0.2
	6	72.2	2.8	74.9	2.6	76.5	2.2	63.3	3.6	74.0	2.1
	7	73.5	1.8	75.9	1.3	77.8	1.7	65.1	2.9	73.8	-0.3
	8	71.4	-2.9	73.9	-2.7	75.7	-2.7	63.8	-2.0	73.8	0.0
	9	71.4	0.0	74.0	0.1	76.7	1.4	62.8	-1.6	72.9	-1.2
	10	71.6	0.3	74.0	0.0	75.5	-1.5	64.1	2.1	73.8	1.1
	11	71.0	-0.8	73.6	-0.5	73.9	-2.2	62.0	-3.3	74.1	0.4
	12	72.1	1.6	74.8	1.6	76.4	3.4	63.4	2.3	74.5	0.6
Average		71.7		74.2		76.3		63.2		73.2	
2018:	1	71.8	-0.3	74.5	-0.4	75.9	-0.6	63.4	-0.1	74.5	-0.1
	2	72.7	1.2	75.3	1.0	78.6	3.5	63.5	0.2	73.7	-1.1
	3	72.1	-0.8	75.3	0.0	77.2	-1.8	61.2	-3.6	74.8	1.6
	4	72.7	0.9	75.4	0.2	78.6	1.8	63.6	4.0	74.1	-1.0
	5	73.4	0.9	76.2	1.1	79.1	0.7	62.5	-1.7	74.8	1.0

Graph 6. Monthly rate of change (%) of the seasonally adjusted volume indices in retail trade, for May 2018 / April 2018



It should be noted that the Retail Trade Turnover and Volume indices of April 2018, which had been announced as provisional in the previous press release, have been revised, due to additional data submitted by enterprises, as follows:

Retail Trade Store Categories	Turnover Index				Volume Index			
	Provisional	Annual rate of change (%)	Revised	Annual rate of change (%)	Provisional	Annual rate of change (%)	Revised	Annual rate of change (%)
Overall Index	74.5	0.8	74.6	0.9	72.3	1.3	72.5	1.5
Overall Index except automotive fuel	76.3	0.8	76.4	0.9	75.3	1.3	75.5	1.6
I. Main store categories								
Food sector	85.5	1.4	85.8	1.8	81.1	2.1	81.4	2.5
Automotive fuel	68.7	2.4	69.0	2.8	62.3	0.8	62.6	1.3
Non-food sector except automotive fuel	66.8	0.0	66.8	0.0	70.5	1.1	70.5	1.1
II. Specialized store categories								
Supermarkets	88.8	3.4	89.1	3.7	86.8	4.6	87.1	4.9
Department stores	75.0	0.1	75.4	0.7	82.5	1.4	82.9	1.8
Automotive fuel	68.7	2.4	69.0	2.8	62.3	0.8	62.6	1.3
Food, beverages, tobacco	67.3	-9.4	67.8	-8.7	62.8	-9.1	63.3	-8.4
Pharmaceutical products, cosmetics	64.4	2.1	64.2	1.7	69.3	3.3	69.2	3.1
Clothing and footwear	74.1	-2.2	72.9	-3.8	71.9	-1.8	70.7	-3.4
Furniture, electrical equipment, household equipment	52.6	8.0	52.9	8.6	64.2	10.7	64.6	11.4
Books, Stationery, other goods	89.2	-4.5	89.1	-4.6	101.2	-3.3	101.2	-3.3
Retail sales not in stores	72.9	13.6	73.1	13.9	:	:	:	:

: Volume Index for the "Retail sale not in stores" is not calculated.

The final indices of the specialized store categories of April 2018 have been changed in relation to the corresponding provisional indices published in the previous press release. The changes are due to new data of the surveyed enterprises mainly in the economic activities of "Food, beverages, tobacco", "Department stores", "Clothing and footwear" and "Furniture, electrical equipment, household equipment".

Generally	The Retail Trade Turnover Index with the current form is being released since August 2005. The Retail Trade Turnover Index is a continuation of the Retail Sales Value Index, which had been compiled during the period 1963 to 2004.
Purpose of the index – definitions	The purpose of the Retail Trade Turnover Index is to depict the evolution of the goods and services market. Turnover comprises the total amounts invoiced by the enterprise during the reference period which correspond to the resale of goods without any further transformation. The data collected each month refers to the actual sales (both retail and wholesale) excluding VAT but including other duties and taxes on the goods.
Legal basis	The compilation of the Retail Trade Turnover Index is governed by Council Regulation (EC) No.1165/98 of 19 November 1998 “concerning short-term statistics” and by Regulation (EC) No.1893/2006 of the European Parliament and of the Council of 20 December 2006 establishing the statistical classification of economic activities NACE Revision 2.
Reference period	Month
Base year	2010=100.0.
Revision	Pursuant to the provisions of the Council Regulation No 1165/98 concerning short-term statistics, the index in question is revised every five (5) years in years ending in 0 or 5. The purpose of revising the Retail Trade Turnover Index is to adapt the index to the changes in the structure of retail trade.
Statistical classification	The NACE Rev.2 statistical classification of economic activities is used in conformity with the Regulation (EC) No 1893/2006 of the European Parliament and of the Council.
Geographical coverage	The index covers the Whole Country with data coming from 61 Regional Units.
Coverage of economic activities	The index covers the division 47 of NACE Rev 2 statistical classification of economic activities.
Statistical survey	In the framework of the survey carried out for the compilation of the Retail Trade Turnover Index (2010=100.0). It was decided to include 41,801 retail trade enterprises listed in the Business Register of ELSTAT having an annual turnover (in 2010) equal to or higher than 200,000 euro. Out of these enterprises a random sample of 1,607 enterprises was selected.
Volume Index	Since 2005 onwards the Retail Trade Volume Index is also being compiled aiming at measuring changes in the volume of retail trade.
Calculating the indices	<p>The turnover index is calculated by the chaining method. First the moving based index is calculated by comparing the estimated turnover value for the current month with the corresponding value of the previous month. Afterwards the fixed base index for the current month is calculated by multiplying the moving-based index by the fixed base index of the previous month.</p> <p>The indices are reduced to a typical month of equal duration. To this end the turnover estimates are multiplied by a suitable correction factor that is calculated by dividing the mean monthly number of working days in the given year by the number of the regular working days in the month under consideration.</p> <p>The Retail Trade Volume Index is calculated by deflating the Retail Trade Turnover Index using the Consumer Price Index (CPI) as deflator.</p>
Seasonal Adjustment	Seasonal adjustment is the procedure followed to remove the impact of seasonality on the time series (that is eliminating the monthly effects, e.g. the beginning of the school year, holidays, tourist period etc) in order to improve the comparability over time. The method used is the TRAMO-SEATS method with the use of JDemetra+ 2.0.0. The whole series with seasonally adjusted indices is <u>recalculated</u> every time a <u>new</u> observation is added in time series.
Compiled index series	Since the revision of the Retail Trade Turnover and Volume Indices due to the implementation of the classification NACE Rev 2, parallel time series for the indices including and not including automotive fuels are provided. In addition, seasonally adjusted time series data are compiled.
Publication of data	The time series of Retail Trade Turnover and Volume Indices (2010=100.0), which include fuel have being published since 2000 by categories of aggregated economic activity classes:

Super-markets

Non-specialised stores with food, beverages or tobacco predominating.

Department stores

Other retail sale in non-specialised stores.

Food, beverages, tobacco

Fruit and vegetables, meat products, Fishes, crustaceans and molluscs, bread, cakes, flour confectionery and sugar confectionery. Beverages, tobacco products, other retail sale of food in specialised stores.

Automotive fuel

Automotive fuel in specialised stores.

Pharmaceutical products, Cosmetics

Dispensing chemist, medical and orthopaedic goods, cosmetic and toilet articles in specialised stores.

Clothing and footwear

Textiles, Clothing, footwear and leather goods in specialised stores.

Furniture, electrical equipment, household equipment

Furniture, lighting equipment, audio and video equipment, hardware, paints and glass, electrical household appliances and other household articles, music and video recordings in specialised stores.

Books, stationery and other goods

Books, newspapers and stationery, computers, peripheral units and software, telecommunications equipment, carpets, rugs, wall and floor coverings, sporting equipment, Games and toys. Flowers, Plants, Seeds, Fertilisers, pet animals and pet food, watches and jewellery, other retail sale of new goods in specialised stores.

Retail sale not in stores

Retail sale via mail order houses, via Internet, via stalls and markets of other goods and other retail sale not in stores, stalls or markets.

Food sector

Super-markets , Food, beverages, tobacco

References More information on the methodology concerning the compilation and calculation of the index and for the time series is available on the ELSTAT website: <http://www.statistics.gr/en/statistics/-/publication/DKT39/>