



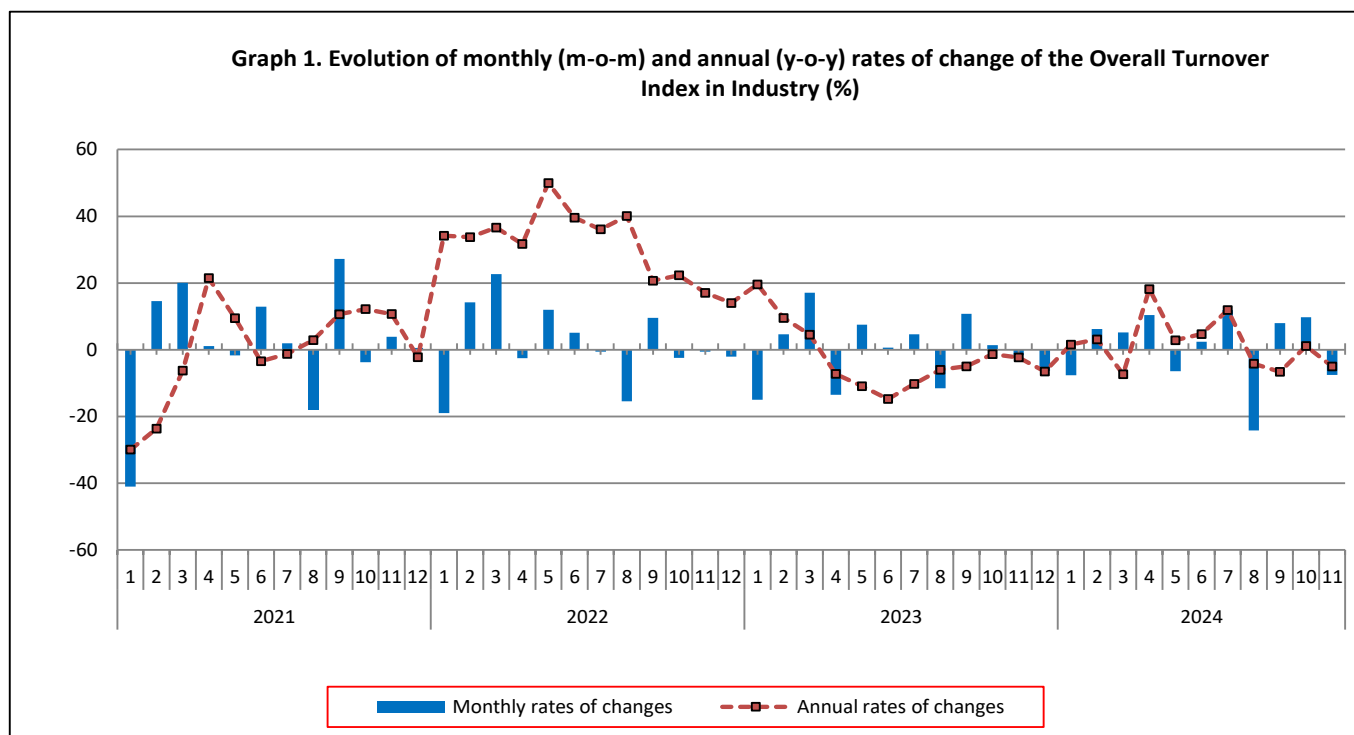
TURNOVER INDEX IN INDUSTRY November 2024, y-o-y decrease of 5.0%

The Hellenic Statistical Authority announces the Turnover Index in Industry with base year 2021=100.0 for November 2024, the evolution of which on the basis of provisional data, is as follows:

The Overall Turnover Index in Industry (both Domestic and Non-Domestic Market) in November 2024 recorded a decrease of 5.0% compared with the corresponding index of November 2023. The Overall Turnover Index in Industry in November 2023 decreased by 2.3% compared with the corresponding index in November 2022 (Table 1).

The Overall Turnover Index in Industry in November 2024, compared with October 2024, recorded a decrease of 7.5% (Table 6).

The average Overall Turnover Index in Industry for the 12-month period from December 2023 to November 2024 increased by 1.0%, compared with the corresponding index of the 12-month period from December 2022 to November 2023. The average Overall Turnover Index in Industry for the 12-month period from December 2022 to November 2023 decreased by 2.0% compared with the corresponding index of the 12-month period from December 2021 to November 2022 (Table 13).



Information on methodological issues:

Division of Business Statistics
Section of Manufacture-Construction Indices and Industrial Products
Zografou Ioanna
Tel: +30 213 135 2406
E-mail: i.zografou@statistics.gr

Information on data provision:

Tel: +30 213 135 2022, 2308, 2310
E-mail: data.dissem@statistics.gr

Evolution of the Overall Turnover Index in Industry in November 2024

I. Annual changes of the Overall Turnover Index in Industry: November 2024 / November 2023

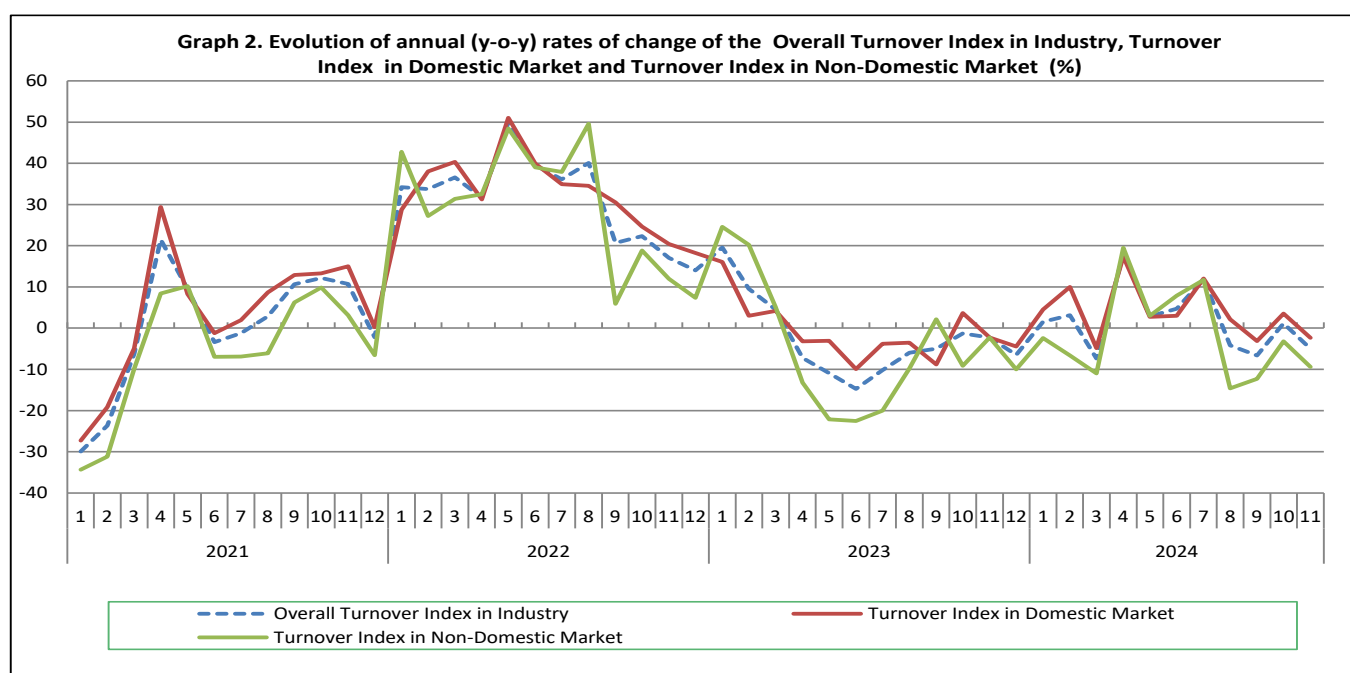
The 5.0% decrease in the Overall Turnover Index in Industry in November 2024, compared with the corresponding index in November 2023, was due to the following:

1. Changes in the sub-indices of the industrial sections (Table 1):

- The Turnover Index in Manufacturing decreased by 5.3%. The decrease was mainly the result of the annual changes of the sub-indices in the following 2-digit divisions: motor vehicles, trailers and semi-trailers, coke and refined petroleum products, computers, electronic and optical products, leather and related products.
- The Turnover Index in Mining and quarrying increased by 18.4%. The increase was mainly the result of the annual changes of the sub-indices in the following 2-digit divisions: mining of metal ores, mining of coal and lignite - extraction of crude petroleum and natural gas - mining support service activities.

2. Changes in the sub-indices in Domestic and Non-Domestic Markets:

- The Turnover Index in Industry in Non-Domestic Market decreased by 9.4% (Table 3).
- The Turnover Index in Industry in Domestic Market decreased by 2.3% (Table 2).



II. Annual changes of the Turnover Index in Industry in Domestic Market: November 2024 / November 2023

The 2.3% decrease of the Turnover Index in Industry in Domestic Market in November 2024, compared with November 2023, is due to the annual changes in the sub-indices of the following industrial sections (Table 2):

- The Turnover Index in Manufacturing decreased by 2.6%. The decrease was mainly the result of the annual changes of the sub-indices in the following 2-digit divisions: motor vehicles, trailers and semi-trailers, coke and refined petroleum products, other manufacturing, textiles.
- The Turnover Index in Mining and quarrying increased by 19.4%. The increase was mainly the result of the annual changes of the sub-indices in the following 2-digit divisions: mining of metal ores, other mining and quarrying products.

III. Annual changes of the Turnover Index in Industry in Non-Domestic Market: November 2024 / November 2023

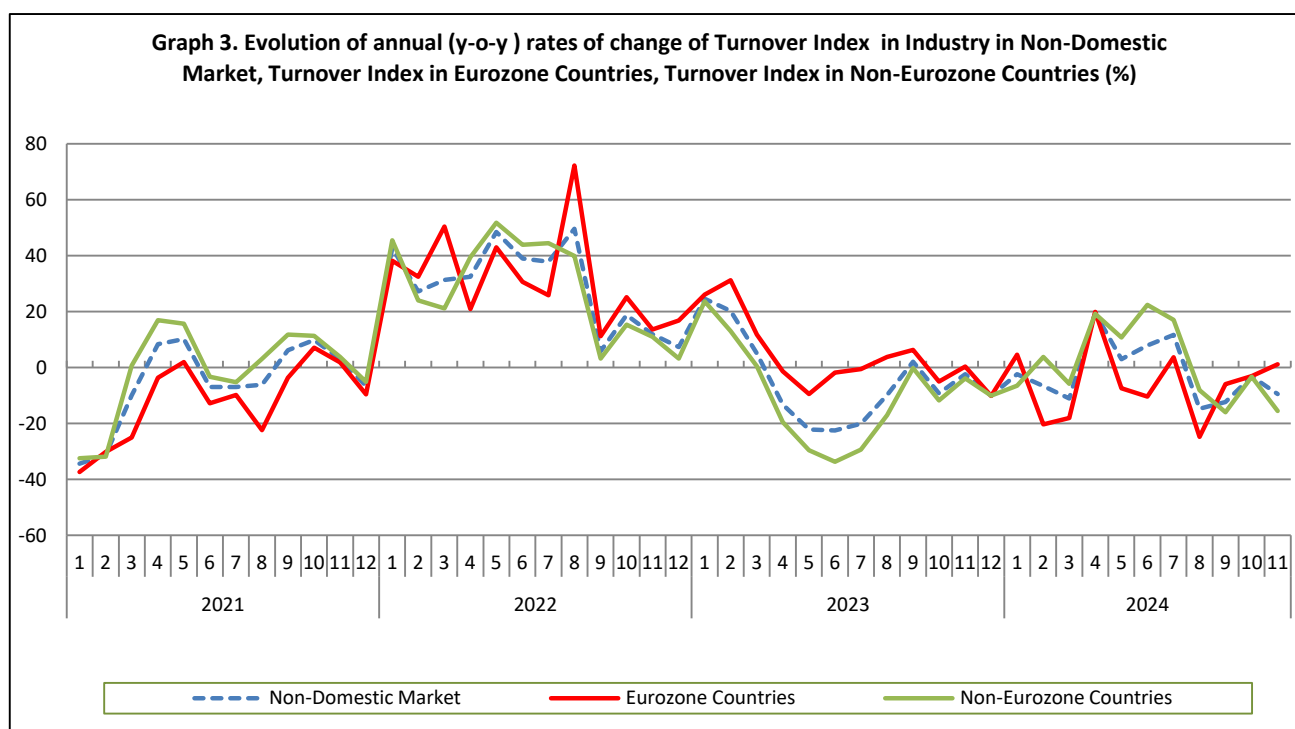
The 9.4% decrease of the Turnover Index in Industry in Non-Domestic Market in November 2024, compared with November 2023, was due to the following:

1. Changes in the sub-indices of the industrial sections (Table 3):

- The Turnover Index in Manufacturing decreased by 9.7%. The decrease was mainly the result of the annual changes of the sub-indices in the following 2-digit divisions: other transport equipment, computers, electronic and optical products, motor vehicles, trailers and semi-trailers, coke and refined petroleum products.
- The Turnover Index in Mining and quarrying increased by 16.9%. The increase was the result of the annual changes of the sub-indices in the following 2-digit divisions: mining of coal and lignite - extraction of crude petroleum and natural gas - mining support service activities, mining of metal ores.

2. Changes in the sub-indices in Eurozone and Non-Eurozone countries:

- The Turnover Index in Industry in Non-Eurozone countries decreased by 15.5% (Table 5).
- The Turnover Index in Industry in Eurozone countries increased by 1.2% (Table 4).



IV. Monthly changes of the Overall Turnover Index in Industry: November 2024 / October 2024

The 7.5% decrease of the Overall Turnover Index in Industry in November 2024, compared with the corresponding index in October 2024, was due to the following:

1. Changes in the sub-indices of industrial sections (Table 6):

- The Turnover Index in Manufacturing decreased by 7.7%.
- The Turnover Index in Mining and quarrying increased by 1.0%.

2. Changes in the sub-indices in Domestic and Non-Domestic Market:

- The Turnover Index in Industry in Domestic Market decreased by 10.3% (Table 7).
- The Turnover Index in Industry in Non-Domestic Market decreased by 2.2% (Table 8).

Table 1. Annual rates of change of the Turnover Index in Industry: Total Market

Base year: 2021=100.0

Code		Division	Weights	November			Rate of change (%)	
				2024*	2023	2022	2024/2023	2023/2022
OVERALL INDEX				124.60	131.16	134.24	-5.0	-2.3
B	MINING AND QUARRYING		100.00	145.31	122.77	122.30	18.4	0.4
05-06-09	Mining of coal and lignite - Extraction of crude petroleum and natural gas - Mining support service activities		6.54	146.54	130.54	53.96	12.3	141.9
07	Mining of metal ores		26.13	150.67	97.48	95.94	54.6	1.6
08	Other mining and quarrying products		67.33	143.10	131.84	139.16	8.5	-5.3
C	MANUFACTURING		100.00	124.34	131.27	134.39	-5.3	-2.3
10	Food		21.71	139.17	130.49	131.82	6.6	-1.0
11	Beverages		2.99	104.99	103.05	97.17	1.9	6.0
12	Tobacco products		1.42	155.68	143.13	144.82	8.8	-1.2
13	Textiles		1.20	100.55	105.92	108.79	-5.1	-2.6
14	Wearing apparel		1.18	98.77	100.88	107.45	-2.1	-6.1
15	Leather and related products		0.20	94.68	109.88	103.89	-13.8	5.8
16	Wood and products of wood and cork, except furniture		0.78	124.13	128.60	121.02	-3.5	6.3
17	Paper and paper products		2.44	127.37	127.64	136.03	-0.2	-6.2
18	Printing and reproduction of recorded products		0.97	133.05	137.84	130.70	-3.5	5.5
19	Coke and refined petroleum products		24.35	105.69	145.00	157.38	-27.1	-7.9
20	Chemicals and chemical products		5.25	111.33	106.15	123.16	4.9	-13.8
21	Basic pharmaceutical products and pharmaceutical preparations		4.43	145.44	131.51	132.07	10.6	-0.4
22	Rubber and plastic products		3.49	114.07	114.87	114.46	-0.7	0.4
23	Other non-metallic mineral products		3.42	164.90	155.97	139.62	5.7	11.7
24	Basic metals		11.11	120.53	116.29	125.65	3.7	-7.5
25	Fabricated metal products, except machinery and equipment		4.58	130.19	131.20	116.87	-0.8	12.3
26	Computers, electronic and optical products		1.17	131.75	171.43	131.82	-23.1	30.1
27	Electrical equipment		3.84	134.34	143.46	133.13	-6.4	7.8
28	Machinery and equipment n.e.c.		1.62	130.25	130.39	137.73	-0.1	-5.3
29	Motor vehicles, trailers and semi-trailers		0.26	122.58	191.35	119.80	-35.9	59.7
30	Other transport equipment		0.30	99.39	91.04	118.17	9.2	-23.0
31	Furniture		0.97	127.39	127.94	122.72	-0.4	4.3
32	Other manufacturing		0.72	117.23	130.07	125.69	-9.9	3.5
33	Repair and installation of machinery and equipment		1.61	146.36	133.25	133.29	9.8	-0.03
MAIN INDUSTRIAL GROUPINGS								
1	Energy		24.13	105.84	144.96	157.05	-27.0	-7.7
2	Intermediate goods		34.47	126.78	122.37	127.21	3.6	-3.8
3	Capital goods		7.19	130.72	136.06	128.82	-3.9	5.6
4	Consumer Durables		1.90	146.09	169.30	144.05	-13.7	17.5
5	Consumer Non-Durables		32.31	133.66	126.90	125.35	5.3	1.2

* Provisional data

Note: The indices and the percentage changes are rounded up to two and one decimal digits, respectively, when published.

Table 2. Annual rates of change of the Turnover Index in Industry: Domestic Market

Base year: 2021=100.0

Code	Division	Weights	November			Rate of change (%)	
			2024*	2023	2022	2024/2023	2023/2022
OVERALL INDEX			131.62	134.75	137.90	-2.3	-2.3
B	MINING AND QUARRYING	100.00	206.11	172.60	143.96	19.4	19.9
05-06-09	Mining of coal and lignite - Extraction of crude petroleum and natural gas - Mining support service activities	9.16	228.10	212.24	82.89	7.5	156.0
07	Mining of metal ores	12.89	236.63	136.17	108.54	73.8	25.5
08	Other mining and quarrying products	77.94	198.47	173.97	157.00	14.1	10.8
C	MANUFACTURING	100.00	130.99	134.42	137.85	-2.6	-2.5
10	Food	27.12	136.50	129.56	129.74	5.4	-0.1
11	Beverages	4.38	103.03	100.64	95.04	2.4	5.9
12	Tobacco products	1.00	141.12	124.59	106.17	13.3	17.3
13	Textiles	1.07	100.24	115.91	117.22	-13.5	-1.1
14	Wearing apparel	1.21	115.70	118.11	113.08	-2.0	4.4
15	Leather and related products	0.25	102.48	116.14	115.27	-11.8	0.8
16	Wood and products of wood and cork, except furniture	1.10	124.63	129.44	124.78	-3.7	3.7
17	Paper and paper products	3.30	124.15	126.36	134.19	-1.7	-5.8
18	Printing and reproduction of recorded products	1.29	129.41	136.97	131.10	-5.5	4.5
19	Coke and refined petroleum products	15.29	124.54	169.74	198.86	-26.6	-14.6
20	Chemicals and chemical products	6.21	105.48	108.68	128.22	-2.9	-15.2
21	Basic pharmaceutical products and pharmaceutical preparations	4.50	136.12	119.85	126.34	13.6	-5.1
22	Rubber and plastic products	3.60	118.12	121.62	115.66	-2.9	5.2
23	Other non-metallic mineral products	3.97	185.05	172.44	147.47	7.3	16.9
24	Basic metals	8.73	137.46	124.21	130.14	10.7	-4.6
25	Fabricated metal products, except machinery and equipment	5.73	139.27	132.65	121.04	5.0	9.6
26	Computers, electronic and optical products	0.49	149.26	132.46	102.59	12.7	29.1
27	Electrical equipment	3.46	137.27	153.13	147.66	-10.4	3.7
28	Machinery and equipment n.e.c.	1.79	123.43	139.09	126.60	-11.3	9.9
29	Motor vehicles, trailers and semi-trailers	0.36	118.83	189.83	121.95	-37.4	55.7
30	Other transport equipment	0.33	116.18	84.48	72.50	37.5	16.5
31	Furniture	1.39	131.34	127.24	123.43	3.2	3.1
32	Other manufacturing	0.95	106.27	126.19	121.04	-15.8	4.3
33	Repair and installation of machinery and equipment	2.48	142.84	128.26	130.98	11.4	-2.1
MAIN INDUSTRIAL GROUPINGS							
1	Energy	15.23	125.11	169.98	198.34	-26.4	-14.3
2	Intermediate goods	35.14	134.33	129.63	133.40	3.6	-2.8
3	Capital goods	8.91	135.82	137.36	124.85	-1.1	10.0
4	Consumer Durables	2.40	133.39	140.62	132.71	-5.1	6.0
5	Consumer Non-Durables	38.32	130.65	124.47	121.38	5.0	2.5

* Provisional data

Note: The indices and the percentage changes are rounded up to two and one decimal digits, respectively, when published.

Table 3. Annual rates of change of the Turnover Index in Industry: Non-Domestic Market

Base year: 2021=100.0

Code	Division	Weights	November			Rate of change (%)	
			2024*	2023	2022	2024/2023	2023/2022
OVERALL INDEX			113.88	125.69	128.66	-9.4	-2.3
B	MINING AND QUARRYING	100.00	101.84	87.15	106.81	16.9	-18.4
05-06-09	Mining of coal and lignite - Extraction of crude petroleum and natural gas - Mining support service activities	4.66	31.87	15.65	13.28	103.6	17.9
07	Mining of metal ores	35.59	128.41	87.46	92.68	46.8	-5.6
08	Other mining and quarrying products	59.75	91.46	92.54	122.52	-1.2	-24.5
C	MANUFACTURING	100.00	114.11	126.40	129.06	-9.7	-2.1
10	Food	13.38	147.50	133.41	138.31	10.6	-3.5
11	Beverages	0.85	120.55	122.23	114.16	-1.4	7.1
12	Tobacco products	2.08	166.43	156.81	173.33	6.1	-9.5
13	Textiles	1.40	100.91	94.16	98.87	7.2	-4.8
14	Wearing apparel	1.13	70.71	72.31	98.11	-2.2	-26.3
15	Leather and related products	0.12	69.20	89.42	66.73	-22.6	34.0
16	Wood and products of wood and cork, except furniture	0.28	121.17	123.55	98.50	-1.9	25.4
17	Paper and paper products	1.12	142.03	133.48	144.42	6.4	-7.6
18	Printing and reproduction of recorded products	0.48	148.22	141.46	129.01	4.8	9.7
19	Coke and refined petroleum products	38.31	94.10	129.79	131.87	-27.5	-1.6
20	Chemicals and chemical products	3.78	126.12	99.76	110.35	26.4	-9.6
21	Basic pharmaceutical products and pharmaceutical preparations	4.32	160.40	150.23	141.28	6.8	6.3
22	Rubber and plastic products	3.32	107.29	103.58	112.45	3.6	-7.9
23	Other non-metallic mineral products	2.57	116.95	116.79	120.93	0.1	-3.4
24	Basic metals	14.76	105.11	109.06	121.55	-3.6	-10.3
25	Fabricated metal products, except machinery and equipment	2.82	101.78	126.63	103.82	-19.6	22.0
26	Computers, electronic and optical products	2.23	125.84	184.58	141.68	-31.8	30.3
27	Electrical equipment	4.42	130.82	131.78	115.61	-0.7	14.0
28	Machinery and equipment n.e.c.	1.34	144.28	112.47	160.63	28.3	-30.0
29	Motor vehicles, trailers and semi-trailers	0.10	143.84	199.99	107.65	-28.1	85.8
30	Other transport equipment	0.26	66.21	104.02	208.46	-36.4	-50.1
31	Furniture	0.32	101.19	132.58	118.02	-23.7	12.3
32	Other manufacturing	0.36	162.29	146.03	144.78	11.1	0.9
33	Repair and installation of machinery and equipment	0.27	196.49	204.22	166.15	-3.8	22.9
MAIN INDUSTRIAL GROUPINGS							
1	Energy	37.70	93.96	129.54	131.61	-27.5	-1.6
2	Intermediate goods	33.44	114.67	110.74	117.28	3.6	-5.6
3	Capital goods	4.57	115.56	132.17	140.63	-12.6	-6.0
4	Consumer Durables	1.15	186.56	260.66	180.16	-28.4	44.7
5	Consumer Non-Durables	23.14	141.28	133.04	135.38	6.2	-1.7

* Provisional data

Note: The indices and the percentage changes are rounded up to two and one decimal digits, respectively, when published.

Table 4. Annual rates of change of the Turnover Index in Industry: Eurozone Countries

Base year: 2021=100.0

CodeSections and main groupings		November			Rate of change (%)	
		2024*	2023	2022	2024/2023	2023/2022
OVERALL INDEX		133.08	131.55	131.05	1.2	0.4
INDUSTRIAL SECTIONS						
B	MINING AND QUARRYING	117.83	80.85	98.40	45.7	-17.8
C	MANUFACTURING	133.45	132.81	131.86	0.5	0.7
MAIN INDUSTRIAL GROUPINGS						
1	Energy	117.25	159.87	175.53	-26.7	-8.9
2	Intermediate goods	132.77	110.84	112.07	19.8	-1.1
3	Capital goods	133.89	153.04	116.55	-12.5	31.3
4	Consumer Durables	221.47	156.72	214.53	41.3	-27.0
5	Consumer Non-Durables	137.55	134.78	124.13	2.1	8.6

* Provisional data

Table 5. Annual rates of change of the Turnover Index in Industry: Non-Eurozone Countries

Base year: 2021=100.0

CodeSections and main groupings		November			Rate of change (%)	
		2024*	2023	2022	2024/2023	2023/2022
OVERALL INDEX		103.49	122.51	127.37	-15.5	-3.8
INDUSTRIAL SECTIONS						
B	MINING AND QUARRYING	87.80	92.68	114.20	-5.3	-18.8
C	MANUFACTURING	103.72	122.96	127.57	-15.6	-3.6
MAIN INDUSTRIAL GROUPINGS						
1	Energy	88.64	122.61	121.58	-27.7	0.8
2	Intermediate goods	101.91	110.66	120.95	-7.9	-8.5
3	Capital goods	106.83	122.23	152.09	-12.6	-19.6
4	Consumer Durables	137.20	407.64	131.55	-66.3	209.9
5	Consumer Non-Durables	145.40	131.12	147.85	10.9	-11.3

* Provisional data

Note: The indices and the percentage changes are rounded up to two and one decimal digits, respectively, when published.

Table 6. Monthly rate of change of the Turnover Index in Industry: Total Market

Base year: 2021=100.0

Code	Sections and main groupings	November 2024*	October 2024**	Rate of change (%) Nov. 2024 / Oct. 2024
OVERALL INDEX		124.60	134.76	-7.5
INDUSTRIAL SECTIONS				
B	MINING AND QUARRYING	145.31	143.88	1.0
C	MANUFACTURING	124.34	134.65	-7.7
MAIN INDUSTRIAL GROUPINGS				
1	Energy	105.84	130.46	-18.9
2	Intermediate goods	126.78	132.86	-4.6
3	Capital goods	130.72	138.55	-5.6
4	Consumer Durables	146.09	130.07	12.3
5	Consumer Non-Durables	133.66	139.43	-4.1

Table 7. Monthly rate of change of the Turnover Index in Industry: Domestic Market

Base year: 2021=100.0

Code	Sections and main groupings	November 2024*	October 2024**	Rate of change (%) Nov. 2024 / Oct. 2024
OVERALL INDEX		131.62	146.77	-10.3
INDUSTRIAL SECTIONS				
B	MINING AND QUARRYING	206.11	186.90	10.3
C	MANUFACTURING	130.99	146.43	-10.5
MAIN INDUSTRIAL GROUPINGS				
1	Energy	125.11	202.56	-38.2
2	Intermediate goods	134.33	136.83	-1.8
3	Capital goods	135.82	147.83	-8.1
4	Consumer Durables	133.39	129.51	3.0
5	Consumer Non-Durables	130.65	134.56	-2.9

Table 8. Monthly rate of change of the Turnover Index in Industry: Non-Domestic Market

Base year: 2021=100.0

Code	Sections and main groupings	November 2024*	October 2024**	Rate of change (%) Nov. 2024 / Oct. 2024
OVERALL INDEX		113.88	116.43	-2.2
INDUSTRIAL SECTIONS				
B	MINING AND QUARRYING	101.84	113.13	-10.0
C	MANUFACTURING	114.11	116.49	-2.0
MAIN INDUSTRIAL GROUPINGS				
1	Energy	93.96	86.02	9.2
2	Intermediate goods	114.67	126.49	-9.3
3	Capital goods	115.56	110.92	4.2
4	Consumer Durables	186.56	131.83	41.5
5	Consumer Non-Durables	141.28	151.75	-6.9

* Provisional data ** Revised data

Note: The indices and the percentage changes are rounded up to two and one decimal digits, respectively, when published.

Table 9. Monthly rate of change of the Turnover Index in Industry: Eurozone Countries

Base year: 2021=100.0

Code	Sections and main groupings	November 2024*	October 2024**	Rate of change (%) Nov. 2024 / Oct. 2024
OVERALL INDEX		133.08	131.24	1.4
INDUSTRIAL SECTIONS				
B	MINING AND QUARRYING	117.83	67.36	74.9
C	MANUFACTURING	133.45	132.82	0.5
MAIN INDUSTRIAL GROUPINGS				
1	Energy	117.25	82.82	41.6
2	Intermediate goods	132.77	146.79	-9.5
3	Capital goods	133.89	135.45	-1.2
4	Consumer Durables	221.47	155.43	42.5
5	Consumer Non-Durables	137.55	139.62	-1.5

* Provisional data ** Revised data

Table 10. Monthly rate of change of the Turnover Index in Industry: Non-Eurozone Countries

Base year: 2021=100.0

Code	Sections and main groupings	November 2024*	October 2024**	Rate of change (%) Nov. 2024 / Oct. 2024
OVERALL INDEX		103.49	108.40	-4.5
INDUSTRIAL SECTIONS				
B	MINING AND QUARRYING	87.80	153.30	-42.7
C	MANUFACTURING	103.72	107.72	-3.7
MAIN INDUSTRIAL GROUPINGS				
1	Energy	88.64	86.75	2.2
2	Intermediate goods	101.91	112.19	-9.2
3	Capital goods	106.83	99.24	7.6
4	Consumer Durables	137.20	98.46	39.3
5	Consumer Non-Durables	145.40	165.18	-12.0

* Provisional data ** Revised data

Note: The indices and the percentage changes are rounded up to two and one decimal digits, respectively, when published.

Table 11. Evolution of the Turnover Index in Industry (y-o-y changes): Total Market

Base year: 2021=100.0

Year and month		Overall Index (Total Market)		Turnover Index in Industry in Domestic Market		Turnover Index in Industry in Non-Domestic Market	
		Index	Annual rate of change (%)	Index	Annual rate of change (%)	Index	Annual rate of change (%)
2023:	11	131.16	-2.3	134.75	-2.3	125.69	-2.3
	12	122.89	-6.5	131.15	-4.5	110.28	-10.0
2024*:	1	113.46	1.5	110.11	4.5	118.57	-2.4
	2	120.55	3.1	124.57	10.0	114.42	-6.6
	3	126.81	-7.3	128.63	-4.9	124.05	-11.0
	4	139.96	18.2	144.17	17.4	133.53	19.5
	5	130.92	2.8	138.88	2.7	118.77	3.0
	6	134.09	4.7	142.13	3.0	121.82	7.9
	7	150.01	11.9	160.53	12.0	133.95	11.7
	8	113.68	-4.2	124.96	2.2	96.48	-14.6
	9	122.76	-6.6	131.40	-3.2	109.58	-12.3
	10	134.76	1.1	146.77	3.5	116.43	-3.2
	11	124.60	-5.0	131.62	-2.3	113.88	-9.4

*Provisional data

Table 12. Evolution of the Turnover Index in Industry (y-o-y changes): Non-Domestic Market

Base year: 2021=100.0

Year and month		Overall Index (Non-Domestic Market)		Turnover Index in Industry in Eurozone Countries		Turnover Index in Industry in Non-Eurozone Countries	
		Index	Annual rate of change (%)	Index	Annual rate of change (%)	Index	Annual rate of change (%)
2023:	11	125.69	-2.3	131.55	0.4	122.51	-3.8
	12	110.28	-10.0	102.63	-10.1	114.43	-10.0
2024*:	1	118.57	-2.4	133.49	4.6	110.49	-6.5
	2	114.42	-6.6	119.79	-20.3	111.51	3.8
	3	124.05	-11.0	138.14	-18.0	116.41	-5.8
	4	133.53	19.5	149.96	19.9	124.63	19.2
	5	118.77	3.0	129.74	-7.4	112.83	10.8
	6	121.82	7.9	127.66	-10.4	118.65	22.4
	7	133.95	11.7	142.16	3.7	129.51	17.0
	8	96.48	-14.6	95.76	-24.8	96.87	-8.0
	9	109.58	-12.3	120.92	-5.9	103.44	-16.0
	10	116.43	-3.2	131.24	-3.1	108.40	-3.3
	11	113.88	-9.4	133.08	1.2	103.49	-15.5

*Provisional data

Note: The indices and the percentage changes are rounded up to two and one decimal digits, respectively, when published.

Table 13. Average indices and rates of change (%) of the 12-month periods of Turnover Index in Industry: Total Market
Base year: 2021=100.0

Code		Division	Average Indices of 12-month periods			Rate of change (%)	
			Dec. 2023- Nov. 2024*	Dec. 2022- Nov. 2023	Dec. 2021- Nov. 2022	2024/2023	2023/2022
OVERALL INDEX			127.87	126.61	129.20	1.0	-2.0
B	MINING AND QUARRYING		127.94	113.08	104.39	13.1	8.3
05-06-09	Mining of coal and lignite - Extraction of crude petroleum and natural gas - Mining support service activities		122.37	115.80	76.44	5.7	51.5
	07 Mining of metal ores		123.03	101.69	96.59	21.0	5.3
	08 Other mining and quarrying products		130.39	117.23	110.13	11.2	6.4
C	MANUFACTURING		127.87	126.78	129.51	0.9	-2.1
10	Food		134.17	129.38	120.06	3.7	7.8
11	Beverages		147.16	134.36	118.33	9.5	13.5
12	Tobacco products		166.91	146.12	116.87	14.2	25.0
13	Textiles		106.13	109.91	110.37	-3.4	-0.4
14	Wearing apparel		97.64	106.61	110.02	-8.4	-3.1
15	Leather and related products		112.56	120.52	109.53	-6.6	10.0
16	Wood and products of wood and cork, except furniture		121.45	120.85	120.82	0.5	0.0
17	Paper and paper products		122.48	126.71	126.24	-3.3	0.4
18	Printing and reproduction of recorded products		125.30	117.34	119.06	6.8	-1.4
19	Coke and refined petroleum products		131.02	139.28	160.04	-5.9	-13.0
20	Chemicals and chemical products		117.09	113.80	128.46	2.9	-11.4
21	Basic pharmaceutical products and pharmaceutical preparations		139.49	133.33	112.01	4.6	19.0
22	Rubber and plastic products		111.05	109.11	115.23	1.8	-5.3
23	Other non-metallic mineral products		148.14	135.34	119.57	9.5	13.2
24	Basic metals		108.80	110.55	127.07	-1.6	-13.0
25	Fabricated metal products, except machinery and equipment		121.05	115.64	112.27	4.7	3.0
26	Computers, electronic and optical products		130.91	133.49	118.66	-1.9	12.5
27	Electrical equipment		127.99	119.75	115.98	6.9	3.3
28	Machinery and equipment n.e.c.		122.37	116.73	109.92	4.8	6.2
29	Motor vehicles, trailers and semi-trailers		127.66	136.09	127.52	-6.2	6.7
30	Other transport equipment		140.15	125.42	121.27	11.7	3.4
31	Furniture		129.30	125.48	117.42	3.0	6.9
32	Other manufacturing		112.55	118.80	114.96	-5.3	3.3
33	Repair and installation of machinery and equipment		132.41	121.42	118.56	9.1	2.4
MAIN INDUSTRIAL GROUPINGS							
1	Energy		131.00	139.21	159.76	-5.9	-12.9
2	Intermediate goods		118.68	116.53	122.72	1.9	-5.0
3	Capital goods		125.39	120.57	114.05	4.0	5.7
4	Consumer Durables		139.11	136.01	121.58	2.3	11.9
5	Consumer Non-Durables		135.23	128.75	117.11	5.0	9.9

*Provisional data

Note: The indices and the percentage changes are rounded up to two and one decimal digits, respectively, when published.

METHODOLOGICAL NOTES

Generally	The Industrial Turnover Index is an indicator of an enterprise's business cycle showing the monthly evolution of the market of goods and services in industry. The first compilation of the Turnover Index was completed by the Hellenic Statistical Authority in 2006, with base year 2000=100.0 and is compiled from 2000 onwards.
Purpose of the index	The purpose of this index is to measure the monthly activity of the industrial sector in terms of value. Turnover comprises the totals invoiced by the observation units during the reference period and corresponds to the market sales of goods or services supplied to third parties. The purposes and the characteristics of the Turnover Index apply, as well, to the indices for the distinction between domestic and non-domestic turnover.
Legal Framework	The compilation and publication of the Turnover Index is based on the Regulation (EU) No 2019/2152 of the European Parliament and of the Council on European business statistics, as well as Commission Implementing Regulation (EU) No 2020/1197 laying down technical specifications and arrangements pursuant to Regulation (EU) No 2019/2152. Furthermore, the indices are governed by Regulation (EC) No 1893/2006 of the European Parliament and of the Council.
Reference period	Month.
Base year	2021=100.0.
Revision	Pursuant to the provisions of Council Regulation No 2019/2152 concerning the indices, they are updated, every five (5) years in years ending in 0 or 5, while, in the current revision 2021=100.0 due to the impact of the pandemic, they were revised with base year the year 2021.
Statistical classifications	At the level of classes of economic activities, the statistical classification of economic activities NACE Rev. 2 of EU was used (Regulation No 1893/2006), while at the level of main industrial groupings, the allocation of two-digit and three-digit NACE Rev. 2 headings to categories of aggregate classification was used, in accordance with Commission Regulation No 656/2007.
Geographical coverage	The index covers the whole Country.
Coverage of economic activities	The Turnover Index in Industry is compiled for all activities listed in Sections B (mining and quarrying) and C (manufacturing) of the NACE Rev. 2 statistical classification.
Computation of the Index	The Turnover Index in Industry is a fixed base index. This index is calculated at a first stage at the four-digit level of economic activity and subsequently, with the implementation of appropriate weighting coefficients, the index is calculated at higher levels (three-level and two-level of economic activity) as well as at the level of Main Industrial Groupings (MIGs).
Publication of data	The Turnover Index in Industry (2021=100.0) is released since December 2024 with October 2024 as first reference month. Data with base year 2021=100.0 are available from January 2000 onwards.
References	More information about the methodology concerning the compilation and calculation of the index and for the time series is available on the website of the Hellenic Statistical Authority (ELSTAT) (http://www.statistics.gr/en/statistics/-/publication/DKT24/-).