



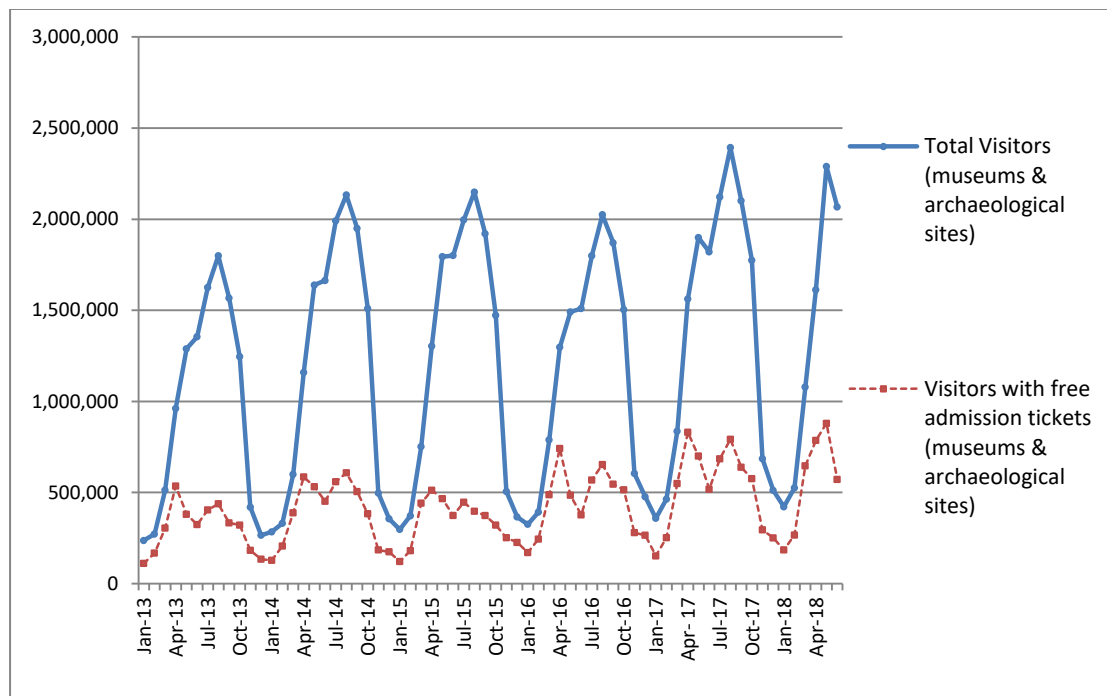
PRESS RELEASE

SURVEY ON MUSEUMS AND ARCHAEOLOGICAL SITES ATTENDANCE JUNE 2018

The Hellenic Statistical Authority (ELSTAT) announces the results of the *Survey on Museums and Archaeological Sites Attendance* for June 2018. More specifically:

- In June 2018 compared with the corresponding month of 2017, Museums experienced an 11.2% increase in the number of visitors and a 6.2% increase in the number of free admission visitors as well as a 13.1% increase in their receipts (Table 1),
- In June 2018 compared with the corresponding month of 2017, the number of visitors at Archaeological sites recorded an increase of 14.5%, while an increase of 12.6% was observed in the number of free admission visitors and an 18.3% increase in the corresponding receipts (Table 1),
- During the six-month period from January to June 2018, an increase of 9.6% was observed in the number of visitors of Museums, while an increase of 5.6% was recorded in the number of free admission visitors and a 13.9% increase in the relevant receipts, in comparison with the corresponding period of 2017 (Table 2),
- As regards Archaeological sites, during the six-month period from January to June 2018, an increase of 18.0% was recorded in the number of visitors, while a 14.7% increase was observed in the number of free admission visitors and a 19.4% increase in the relevant receipts, in comparison with the corresponding period of 2017 (Table 2),

Graph 1: Visitors of Museums and Archaeological sites (Jan 2013 – June 2018)



Information:

Social Statistics Division

Section of Culture and Sports statistics,

Argyri Pateraki (Tel: +30 213 1352129, e-mail: ar.pateraki@statistics.gr)

**TABLE 1: VISITORS OF MUSEUMS AND ARCHAEOLOGICAL SITES - TOTAL RECEIPTS
(JUNE 2017 & JUNE 2018)**

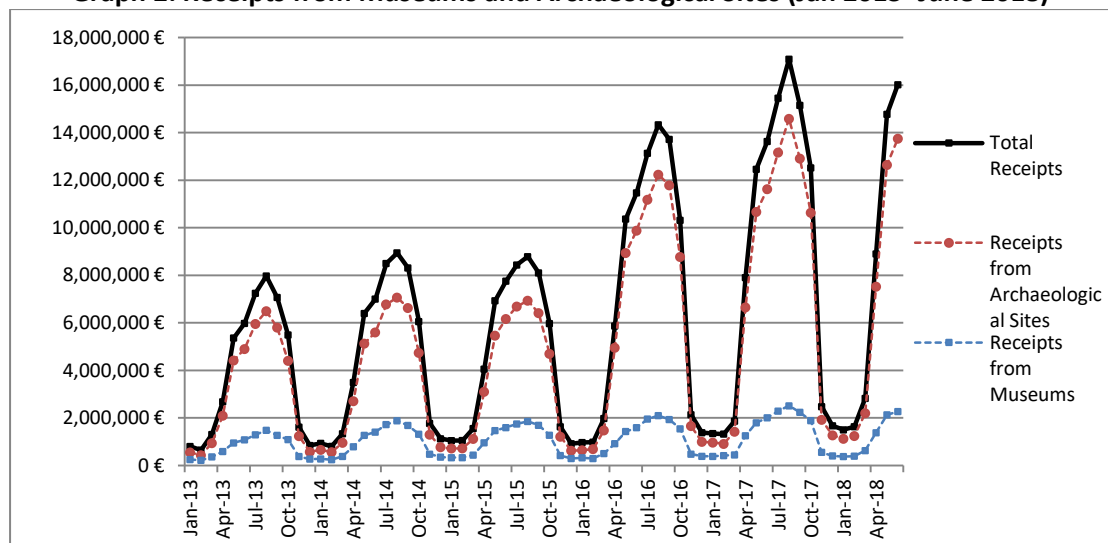
I. VISITORS			
Museums and Archaeological sites	2017	2018	Change 2018/2017
Total number of visitors (A+B)	1,820,321	2,066,838	13.5%
A. Museums (C+E)	509,058	565,846	11.2%
Acropolis Museum	163,031	177,961	9.2%
National Archaeological	50,556	54,194	7.2%
Ancient Olympia	14,017	14,788	5.5%
Palace of the Grand Master (Rhodes)	28,104	30,335	7.9%
Herakleion Archaeological (Crete)	48,647	62,631	28.7%
White Tower	21,036	17,427	-17.2%
Delphi	22,803	26,420	15.9%
Other museums	160,864	182,090	13.2%
B. Archaeological Sites (D+F)	1,311,263	1,500,992	14.5%
Epidavros ⁽¹⁾	47,209	53,062	12.4%
The Acropolis of Mycenae & Atreus' Treasure	40,532	48,031	18.5%
The Acropolis of Athens ⁽²⁾	317,786	332,833	4.7%
Sounio	27,486	34,421	25.2%
The Acropolis of Lindos	64,523	74,003	14.7%
Royal Tombs of Vergina	18,336	21,293	16.1%
Ancient Olympia	52,407	55,479	5.9%
Knossos (Crete)	78,899	93,492	18.5%
Phaistos (Crete)	10,065	10,758	6.9%
Ancient Korinthos ⁽¹⁾	18,729	23,041	23.0%
Mystras ⁽¹⁾	12,145	13,629	12.2%
Delphi	36,362	43,577	19.8%
Other archaeological sites	586,784	697,373	18.8%
II. VISITORS WHO PAID TICKET			
	2017	2018	Change 2018/2017
Total number of visitors who paid ticket (C+D)	1,302,750	1,495,462	14.8%
C. Museums	333,052	378,982	13.8%
D. Archaeological sites	969,698	1,116,480	15.1%
III. VISITORS WITH FREE ADMISSION TICKETS			
	2017	2018	Change 2018/2017
Total number of visitors with free admission ticket (E+F)	517,571	571,376	10.4%
E. Museums	176,006	186,864	6.2%
F. Archaeological sites	341,565	384,512	12.6%
IV. RECEIPTS (euros)			
	2017	2018	Change 2018/2017
Total Receipts (G+H)	13,631,637.00	16,017,675.00	17.5%
G. Museums	2,006,908.00	2,269,790.00	13.1%
H. Archaeological sites	11,624,729.00	13,747,885.00	18.3%

⁽¹⁾ Flat rate ticket, valid both for the museum and the archaeological site,

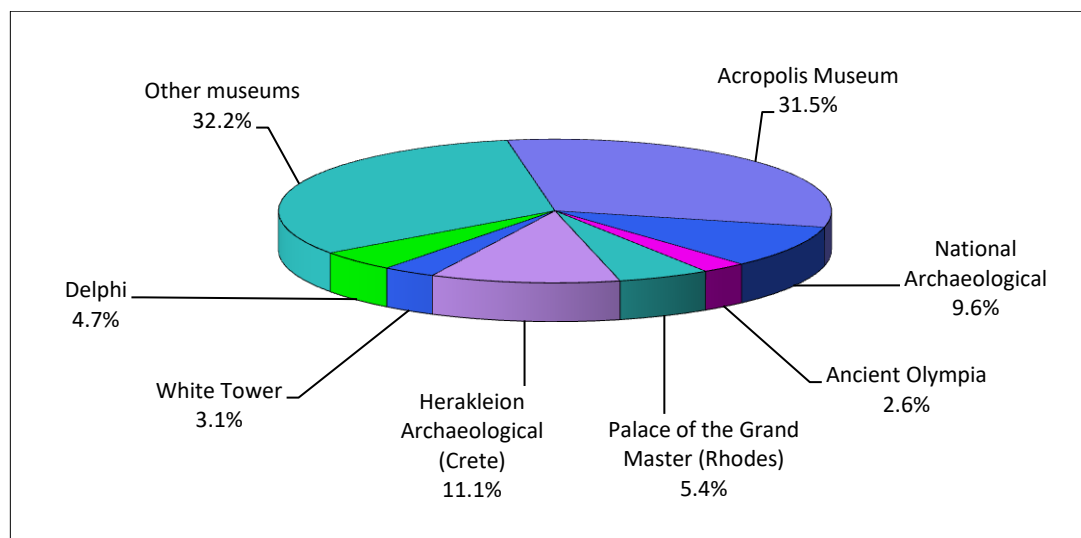
⁽²⁾ From May 2017 onwards, the data for the number of tickets in the archaeological site of the Acropolis of Athens include the tickets of the Ancient Theatre of Dionysos.

The following graphs depict the evolution of the receipts (Graph 2), as well as the number of visitors by Museum and Archaeological Site (Graphs 3 and 4, respectively).

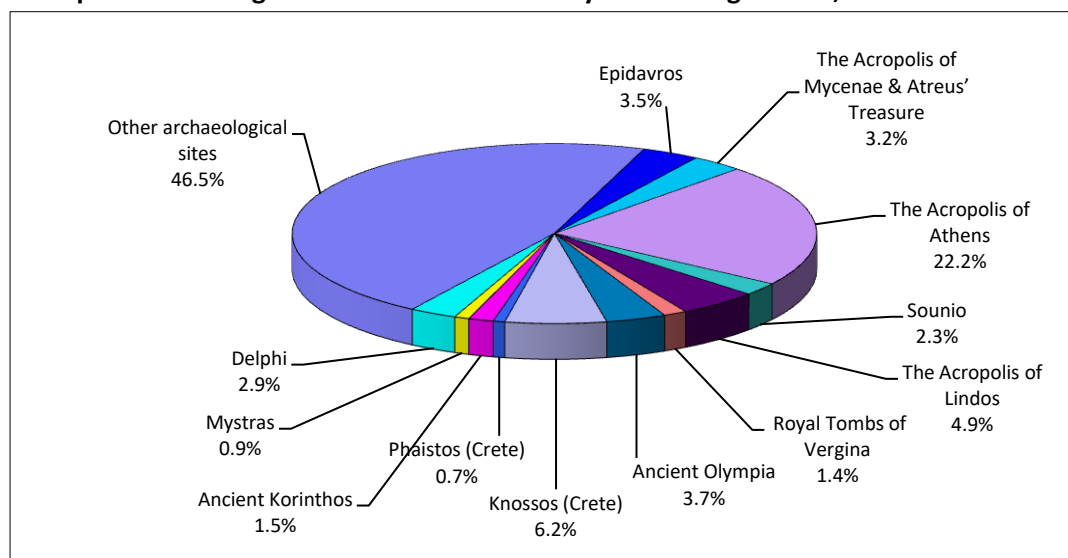
Graph 2: Receipts from Museums and Archaeological Sites (Jan 2013- June 2018)



Graph 3: Percentage distribution of Visitors by Museum, June 2018



Graph 4: Percentage distribution of Visitors by Archaeological site, June 2018



**TABLE 2: VISITORS OF MUSEUMS AND ARCHAEOLOGICAL SITES - TOTAL RECEIPTS
(2016, 2017 AND JANUARY-JUNE 2017 & 2018)**

I. VISITORS					
Museums and Archaeological sites	2016	2017	JANUARY-JUNE		change
			2017	2018	2018/2017
Total number of visitors (A+B)	14,080,639	16,524,557	6,938,345⁽³⁾	7,993,189	15.2%
A. Museums (C+E)	4,515,966	5,191,781	2,318,042	2,541,298	9.6%
Acropolis Museum	1,406,096	1,593,362	723,481	811,335	12.1%
National Archaeological	447,093	545,555	259,383	267,426	3.1%
Ancient Olympia	124,136	145,118	71,975	79,022	9.8%
Palace of the Grand Master (Rhodes)	237,361	235,413	78,635	75,466	-4.0%
Herakleion Archaeological (Crete)	394,915	426,191	139,386	203,087	45.7%
White Tower	290,192	268,149	120,860	94,660	-21.7%
Delphi	166,091	211,827	108,550	124,448	14.6%
Other museums	1,450,082	1,766,166	815,772	885,854	8.6%
B. Archaeological Sites (D+F)	9,564,673	11,332,776	4,620,303⁽³⁾	5,451,891	18.0%
Epidavros ⁽¹⁾	375,437	469,060	229,066	273,722	19.5%
The Acropolis of Mycenae & Atreus' Treasure ⁽³⁾	342,854	412,397	199,511 ⁽³⁾	247,308	24.0%
The Acropolis of Athens	1,807,580	2,766,218	1,085,636	1,411,843	30.0%
Sounio	222,800	259,709	117,933	150,529	27.6%
The Acropolis of Lindos	421,070	441,012	135,601	155,278	14.5%
Royal Tombs of Vergina	186,627	203,632	107,278	119,909	11.8%
Ancient Olympia	423,424	481,252	182,835	201,011	9.9%
Knossos (Crete)	611,455	634,710	203,800	267,751	31.4%
Phaistos (Crete)	77,071	95,182	28,636	59,151	106.6%
Ancient Korinthos ⁽¹⁾	153,307	191,836	98,603	91,500	-7.2%
Mystras ⁽¹⁾	114,293	125,549	54,209	64,939	19.8%
Delphi	290,705	345,804	159,938	196,960	23.1%
Other archaeological sites	4,538,050	4,906,415	2,017,257	2,211,990	9.7%
II. VISITORS WHO PAID TICKET					
	2016	2017	JANUARY-JUNE		change
			2017	2018	2018/2017
Total number of visitors who paid ticket (C+D)	8,749,957	10,288,448	3,938,132	4,659,845	18.3%
C. Museums	2,406,665	2,831,466	1,138,855	1,296,013	13.8%
D. Archaeological sites	6,343,292	7,456,982	2,799,277	3,363,832	20.2%
III. VISITORS WITH FREE ADMISSION TICKETS					
	2016	2017	JANUARY-JUNE		change
			2017	2018	2017/2016
Total number of visitors with free admission ticket (E+F)	5,330,682	6,236,109	3,000,213⁽³⁾	3,333,344	11.1%
E. Museums	2,109,301	2,360,315	1,179,187	1,245,285	5.6%
F. Archaeological sites	3,221,381	3,875,794	1,821,026 ⁽³⁾	2,088,059	14.7%
IV. RECEIPTS (euros)					
	2016	2017	JANUARY-JUNE		change
			2017	2018	2017/2016
Total Receipts (G+H)	86,647,638.00	102,887,879.00	38,527,143.00	45,645,089.00	18.5%
G. Museums	13,448,464.00	16,175,121.00	6,295,749.00	7,172,763.00	13.9%
H. Archaeological sites	73,199,174.00	86,712,758.00	32,231,394.00	38,472,326.00	19.4%

⁽¹⁾ Flat rate ticket, valid both for the museum and the archaeological site,

⁽²⁾ From May 2017 onwards, the data for the number of tickets in the archaeological site of the Acropolis of Athens include the tickets of the Ancient Theatre of Dionysos.

⁽³⁾ The data on the number of visitors to the archaeological site of the Acropolis of Mycenae & Atreus' Treasure for May 2017 have been revised

EXPLANATORY NOTES

Survey on Museums and Archaeological Sites Attendance	<p>The Survey on Museums and Archaeological Sites Attendance has been producing results since 1970, The survey collects data from the Archaeological Receipts Fund (ARF) of the Ministry of Culture and Sports concerning the number of visitors and the receipts from the tickets sold in the Museums and Archaeological sites of the country.</p> <p>The corresponding data for the Acropolis Museum are available from December 2009 onwards.</p>
Legal Framework	<p>The survey is conducted since 1970 on a regular basis and it produces results on a monthly and yearly basis, in compliance with the Joint Ministerial Decision 15189/B379/73.</p>
Reference Period	<p>01/06/2018 to 30/06/2018.</p>
Methodology and Definitions	<p>The Survey is conducted on a monthly basis from data collected from the Archaeological Receipts Fund (ARF) of the Ministry of Culture and Sports concerning on the number of visitors and the receipts from the tickets sold in the Museums and Archaeological sites of the country, ELSTAT tabulates the data on Museums and the Archaeological sites for the whole of the Country, by month and by year.</p>

Information on ticket payment

- From January 2002 onwards, the number of Museums' visitors includes both the visitors who have bought a ticket and the visitors with free admission ticket, From 16-06-1996 onwards, the Museums and the Archaeological sites all over Greece have a paid admission for all the visitors, Greeks and foreigners, all over the year, except in the following days, which are free admission days:
- National Holidays (25th of March and 28th of October)
- The first Sunday every month during the five month period from 1 November to 31 March
- The 6th of March (in memory of Melina Merkouri)
- The 18th of April (International Monuments Day)
- The 18th of May (International Museums Day)
- The 5th of June (International Environment Day)
- The last weekend of September, annually (European Heritage Days)

Free admission tickets

The admission to Museums and Archaeological site is free for:

- Young people from EU-countries aged under 18 years, with current identification card to confirm their age,
- Students of Universities and of Higher and Technical Education Institutions or equivalent institutions of EU-countries, as well as of Tour Guide Training Institutes, with valid student identification card or International Student Identity Card (ISIC)
- Employees of the Hellenic Ministry of Culture, with valid professional identity card
- ICOM and ICOMOS cardholders
- Tour Guides with their current working identification card from the Ministry of Development
- Teachers accompanying pupils and students on primary, secondary and tertiary education institution tours
- Journalists with valid journalists' identification card
- Members of Associations and Societies of Friends of Museums and Archaeological Sites
- Official guests of the Greek Government, after relevant approval
- Escorts of blind persons and persons with disabilities
- Free admission cardholders
- Holders of the Culture Card

Number of flat rate tickets

From April 1999 onwards, in some museums and the nearby archaeological sites, in addition to the ordinary ticket, a new "flat rate ticket" was established, which is valid for both the museum and the nearby archaeological site, The total number of these flat rate tickets for **June 2018** was **129,993**.

More information on the Survey on Museums and Archaeological Sites Attendance and detailed time series are available on: <http://www.statistics.gr/en/statistics/-/publication/SCI21/->