

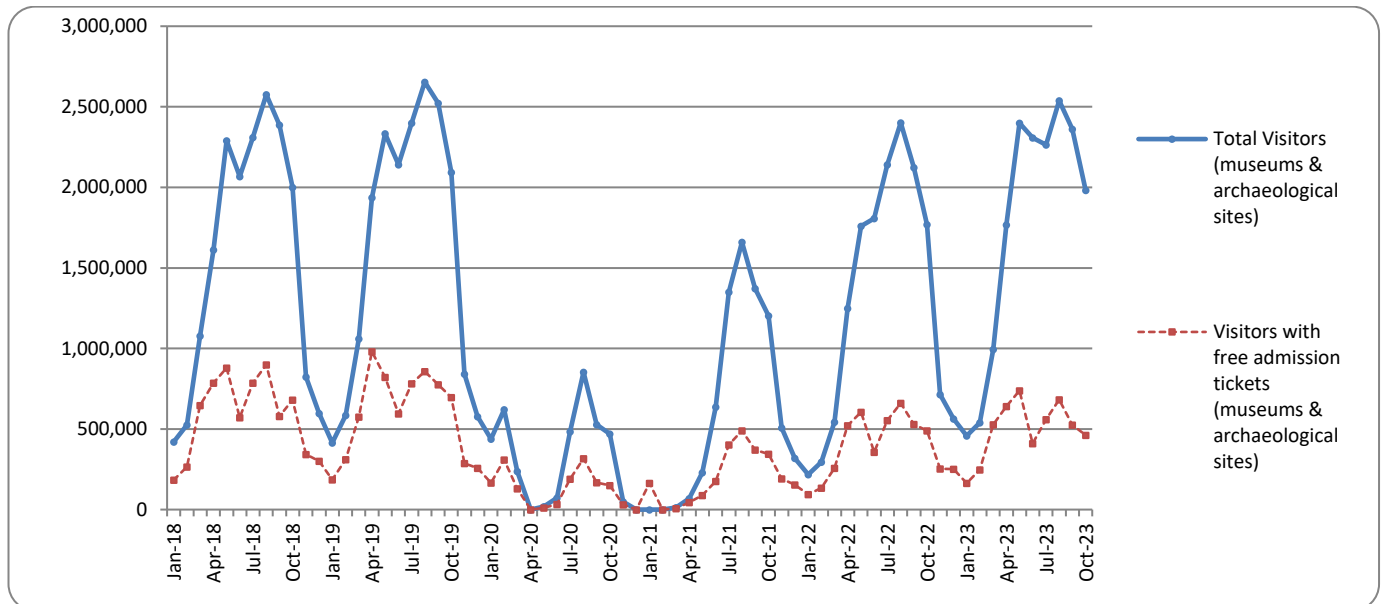


SURVEY ON MUSEUMS AND ARCHAEOLOGICAL SITES ATTENDANCE OCTOBER 2023

The Hellenic Statistical Authority (ELSTAT) announces the results of the *Survey on Museums and Archaeological Sites Attendance* for October 2023. More specifically:

- During October 2023 compared with the corresponding month of 2022, museums recorded a 20.7% increase in the number of visitors, a 9.6% decrease in the number of free admission visitors, as well as a 36.7% increase in their receipts (Table 1).
- As regards archaeological sites, in October 2023 compared with the corresponding month of 2022, an increase of 9.0% was recorded in the number of visitors, a 3.6% decrease in the number of free admission visitors and a 10.4% increase in the corresponding receipts (Table 1).
- During the ten-month period from January to October 2023, compared to the corresponding period of 2022, an increase of 26.2% was recorded in the number of visitors of museums, of 21.2% in the number of free admission visitors and of 52.7% in the relevant receipts (Table 2).
- As regards archaeological sites, during the ten-month period from January to October 2023, compared to the corresponding period of 2022, an increase of 21.8% was recorded in the number of visitors, while an increase of 16.2% was observed in the number of free admission visitors and of 24.3% in the relevant receipts (Table 2).

Graph 1: Visitors of Museums and Archaeological sites (January 2018 –October 2023)



Information on methodological issues:

Sectoral Statistics Division
Tourism and Culture Statistics Section
Head of Section: Eleni Papadopoulou
Tel: +30 213 135 2168
e-mail: e.papadopoulou@statistics.gr

Information for data provision:

Tel. +30 213 135 2022, 2308, 2310
e-mail: data.dissem@statistics.gr

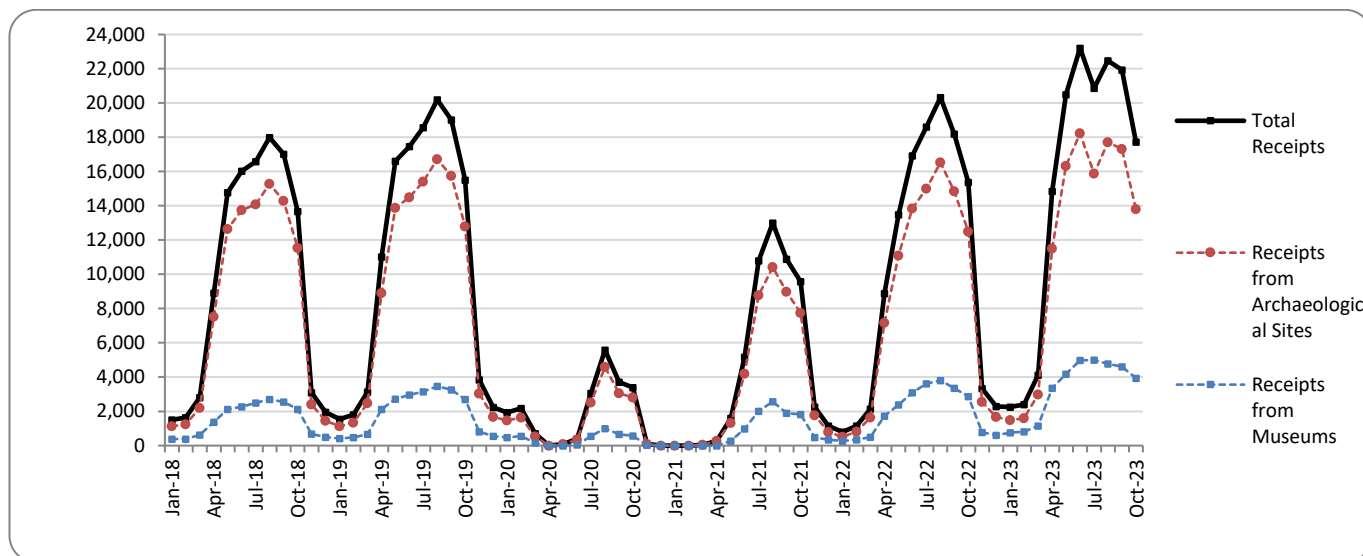
**TABLE 1: VISITORS OF MUSEUMS AND ARCHAEOLOGICAL SITES - TOTAL RECEIPTS
(OCTOBER 2022 & OCTOBER 2023)**

I. NUMBER OF VISITORS			
Museums and Archaeological sites	2022	2023	Change 2023/2022
Total number of visitors (A+B)	1,769,296	1,981,654	12.0%
A. Museums (C+E)	455,341	549,527	20.7%
Acropolis Museum	112,235	175,496	56.4%
National Archaeological	57,282	63,064	10.1%
Ancient Olympia	9,123	9,312	2.1%
Palace of the Grand Master (Rhodes)	25,518	47,545	86.3%
Herakleion Archaeological (Crete)	29,255	30,842	5.4%
White Tower	22,680	22,966	1.3%
Delphi	18,563	19,129	3.0%
Other museums	180,685	181,173	0.3%
B. Archaeological Sites (D+F)	1,313,955	1,432,127	9.0%
Epidavros ⁽¹⁾	48,293	54,159	12.1%
The Acropolis of Mycenae & Atreus' Treasure	49,299	52,962	7.4%
The Acropolis of Athens	333,495	355,829	6.7%
Sounio	37,809	43,992	16.4%
The Acropolis of Lindos	74,033	83,603	12.9%
Royal Tombs of Vergina	17,624	14,391	-18.3%
Ancient Olympia	45,171	58,422	29.3%
Knossos (Crete)	103,525	113,150	9.3%
Phaistos (Crete)	11,990	11,147	-7.0%
Ancient Korinthos ⁽¹⁾	24,569	32,007	30.3%
Mystras ⁽¹⁾	15,885	15,791	-0.6%
Delphi	41,904	50,262	19.9%
Other archaeological sites	510,358	546,412	7.1%
II. VISITORS WHO PAID TICKET			
	2022	2023	Change 2023/2022
Total number of visitors who paid ticket (C+D)	1,278,975	1,520,010	18.8%
C. Museums	273,950	385,542	40.7%
D. Archaeological sites	1,005,025	1,134,468	12.9%
III. VISITORS WITH FREE ADMISSION TICKETS			
	2022	2023	Change 2023/2022
Total number of visitors with free admission ticket (E+F)	490,321	461,644	-5.8%
E. Museums	181,391	163,985	-9.6%
F. Archaeological sites	308,930	297,659	-3.6%
IV. RECEIPTS (euros)			
	2022	2023	Change 2023/2022
Total Receipts (G+H)	15,374,118	17,728,985	15.3%
G. Museums	2,873,274	3,927,545	36.7%
H. Archaeological sites	12,500,844	13,801,440	10.4%

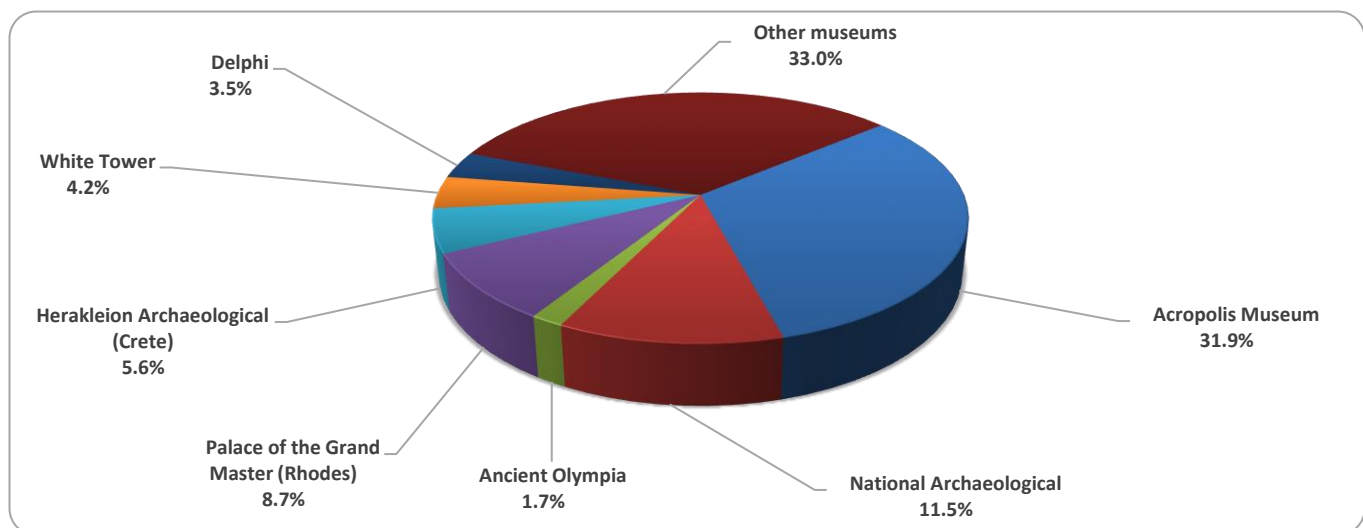
⁽¹⁾ Flat rate ticket, valid both for the museum and the archaeological site.

The following graphs depict the evolution of the receipts of Museums and Archaeological Sites (Graph 2), as well as the number of visitors by Museum (Graph 3) and by Archaeological Site (Graph 4).

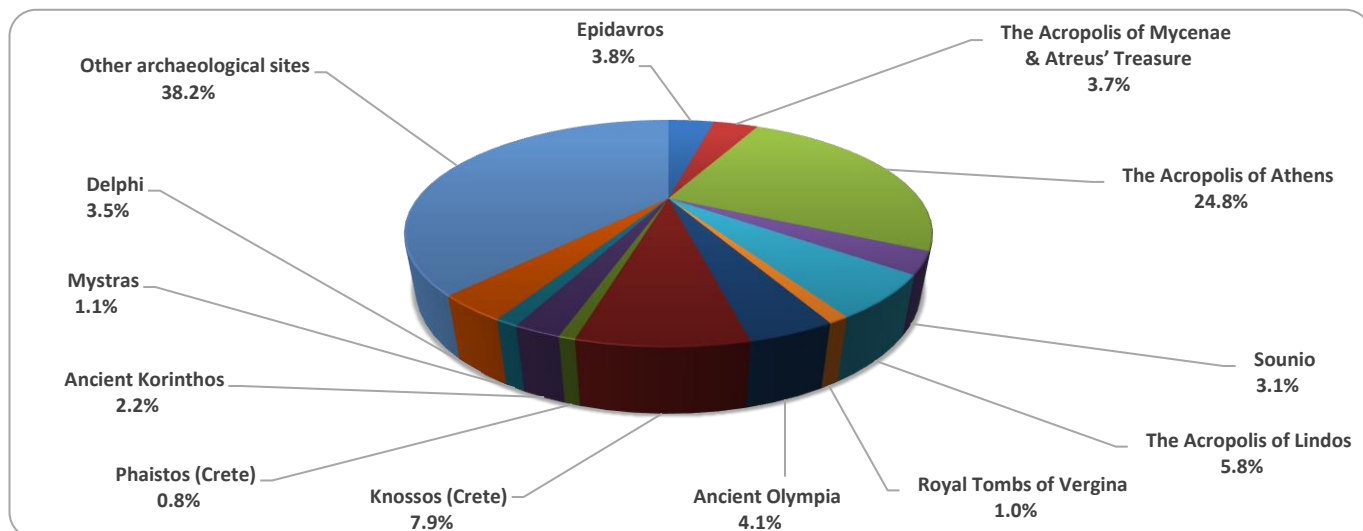
Graph 2: Receipts from Museums and Archaeological Sites (January 2018 – October 2023)
(in thousand euro)



Graph 3: Percentage distribution of visitors by Museum, October 2023



Graph 4: Percentage distribution of visitors by Archaeological site, October 2023



**TABLE 2: VISITORS OF MUSEUMS AND ARCHAEOLOGICAL SITES - TOTAL RECEIPTS
(2021, 2022, JANUARY - OCTOBER 2022, 2023)**

I. VISITORS					
Museums and Archaeological sites	2021 ⁽²⁾	2022	JANUARY-OCTOBER		change
			2022	2023	2023/2022
Total number of visitors (A+B)	7,357,026	15,583,552	14,306,467	17,611,218	23.1%
A. Museums (C+E)	2,047,481	4,636,901	4,111,971	5,189,531	26.2%
Acropolis Museum	547,908	1,397,353	1,234,831	1,715,398	38.9%
National Archaeological	189,208	474,821	413,380	572,358	38.5%
Ancient Olympia	34,367	85,179	79,718	79,737	0.0%
Palace of the Grand Master (Rhodes)	142,530	263,521	247,792	314,423	26.9%
Herakleion Archaeological (Crete)	127,574	249,715	231,047	273,279	18.3%
White Tower	77,983	193,916	165,027	216,477	31.2%
Delphi	58,102	151,512	133,310	185,225	38.9%
Other museums	869,809	1,820,884	1,606,866	1,832,634	14.1%
B. Archaeological Sites (D+F)	5,309,545	10,946,651	10,194,496	12,421,687	21.8%
Epidavros ⁽¹⁾	182,118	393,077	365,147	491,733	34.7%
The Acropolis of Mycenae & Atreus' Treasure	156,227	372,448	344,143	475,120	38.1%
The Acropolis of Athens	1,219,717	3,019,841	2,711,800	3,558,210	31.2%
Sounio	171,348	314,506	285,822	354,499	24.0%
The Acropolis of Lindos	349,418	596,331	587,786	617,334	5.0%
Royal Tombs of Vergina	56,790	168,444	140,404	169,607	20.8%
Ancient Olympia	143,549	338,365	316,265	452,814	43.2%
Knossos (Crete)	445,160	831,320	802,664	914,597	13.9%
Phaistos (Crete)	48,599	74,817	72,900	77,901	6.9%
Ancient Korinthos ⁽¹⁾	59,271	153,616	140,552	194,577	38.4%
Mystras ⁽¹⁾	78,762	139,512	131,634	140,203	6.5%
Delphi	146,061	332,870	302,079	437,329	44.8%
Other archaeological sites	2,252,525	4,211,504	3,993,300	4,537,763	13.6%
II. VISITORS WHO PAID TICKET					
	2021 ⁽²⁾	2022	JANUARY-OCTOBER		change
			2022	2023	2023/2022
Total number of visitors who paid ticket (C+D)	5,090,418	10,877,516	10,105,872	12,654,945	25.2%
C. Museums	1,289,896	2,883,216	2,607,981	3,367,207	29.1%
D. Archaeological sites	3,800,522	7,994,300	7,497,891	9,287,738	23.9%
III. VISITORS WITH FREE ADMISSION TICKETS					
	2021 ⁽²⁾	2022	JANUARY-OCTOBER		change
			2022	2023	2023/2022
Total number of visitors with free admission ticket (E+F)	2,266,608	4,706,036	4,200,595	4,956,273	18.0%
E. Museums	757,585	1,753,685	1,503,990	1,822,324	21.2%
F. Archaeological sites	1,509,023	2,952,351	2,696,605	3,133,949	16.2%
IV. RECEIPTS (euros)					
	2021 ⁽²⁾	2022	JANUARY-OCTOBER		change
			2022	2023	2023/2022
Total Receipts (G+H)	54,735,194	121,535,113	115,910,094	150,350,907	29.7%
G. Museums	10,385,644	23,361,465	21,965,791	33,538,360	52.7%
H. Archaeological sites	44,349,550	98,173,648	93,944,303	116,812,547	24.3%

⁽¹⁾ Flat rate ticket, valid both for the museum and the archaeological site.

⁽²⁾ The operation of museums was suspended gradually from November 1st 2020 until May 13th 2021. The operation of archaeological sites was suspended from November 7th 2020 until March 21st 2021, in the framework of the preventative measures against the Covid-19 pandemic.

EXPLANATORY NOTES

Survey on Museums and Archaeological Sites Attendance	<p>The Survey on Museums and Archaeological Sites Attendance has been producing results since 1970. The survey collects data from the Hellenic Organization of Cultural Resources Development (HOCRED), supervised by the Ministry of Culture and Sports, on the number of visitors and the receipts from the tickets sold in the Museums and Archaeological sites of the country. The corresponding data for the Acropolis Museum is available from December 2009 onwards.</p>
Legal Framework	<p>The survey is conducted since 1970 on a regular basis and it produces results on a monthly and yearly basis, in compliance with the Joint Ministerial Decision 15189/B379/73.</p>
Reference Period	<p>1/10/2023 - 30/10/2023</p>
Methodology and Definitions	<p>The survey is conducted on a monthly basis from data mainly collected from the Hellenic Organization of Cultural Resources Development (HOCRED), supervised by the Ministry of Culture and Sports, on the number of visitors and the receipts from the tickets sold in the Museums and Archaeological sites of the Country. ELSTAT tabulates and presents the data for the whole of the Country, by month and by year.</p> <p>Number of flat rate tickets:</p> <p>From April 1999 onwards, in some museums and the nearby archaeological sites, in addition to the ordinary ticket, a new “flat rate ticket” was established, which is valid for both the museum and the nearby archaeological site. The total number of these flat rate tickets for October 2023 was 109,979.</p>
References	<p>More information on the Survey on Museums and Archaeological Sites Attendance and detailed time series are available on: http://www.statistics.gr/en/statistics/-/publication/SCI21/-</p>