



ISSUING OF MOTOR VEHICLE LICENSES: DECEMBER 2022

The Hellenic Statistical Authority announces that in December 2022, 11,976 road motor cars (both new and used from abroad) were put into circulation for the first time, recording a 0.3% decrease compared with the corresponding month of 2021 when the number of road motor cars was 12,007. In December 2021, a 26.9% increase had been observed in comparison with the corresponding month of 2020 (Table 1, Graphs 1,2,3,5). A total number of 7,343 new cars were put into circulation in December 2022 compared with 6,257 in December 2021, recording a 17.4% increase.

The new motorcycles over 50cc (both new and used from abroad) that were put into circulation for the first time in December 2022 amounted to 2,547, against 2,323 in 2021, thus recording a 9.6% increase. In December 2021, a 0.5% decrease had been observed in comparison with the corresponding month of 2020 (Table 1, Graph 4). Out of the above motorcycles 2,440 were new, while the corresponding figure in December 2021 was 2,154, recording a 13.3% increase.

During the period January - December 2022, 205,130 road motor cars (both new and used from abroad) were put into circulation for the first time, representing an increase of 3.3% compared to the corresponding period of 2021 when the number of road motor cars was 198,552. During the period January - December 2021 an increase of 22.1% had been observed in comparison with the corresponding period of 2020 (Table 3, Graphs 6,7). Out of the above number of road motor cars that were put into circulation, from January to December 2022, 115,661 were new, while the corresponding number during the respective period of 2021 was 111,356, recording an increase of 3.9%.

During the period January - December 2022 the circulation of new motorcycles over 50cc (both new and used from abroad) amounted to 59,896 against 48,812 in 2021, thus representing a 22.7% increase. An increase of 26.6% had been observed during the period January - December 2021 in comparison with the corresponding period of 2020 (Table 3, Graphs 6,7). A total number of 55,662 new motorcycles were put into circulation, from January to December 2022, compared with 44,437 during the corresponding period of 2021, recording a 25.3% increase.

Information on methodological issues:

Sectoral Statistics Division

Transport Statistics Section

Pota Tzortzi, Konstantinos Menexes

Tel: +30 213 135 2187, +30 213 135 3055

e-mail: p.tzortzi@statistics.gr, k.menexes@statistics.gr

Information for data provision:

Tel: +30 213 135 2022

e-mail: data.dissem@statistics.gr

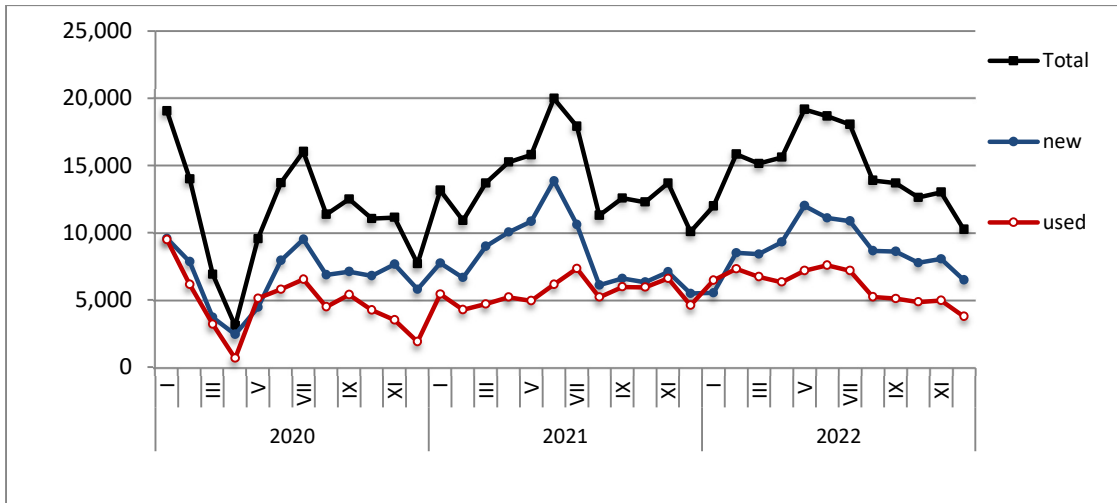
Table 1. Road motor vehicles, both new and used, put into circulation for the first time in Greece: December 2020 - 2022

| Category of Road Motor Vehicles | December | | | | | | | | | Change (%) | | | | | |
|---------------------------------|----------|-------|-------|--------|-------|-------|--------|-------|-------|------------|--------|--------|-----------|-------|--------|
| | 2020 | | | 2021 | | | 2022 | | | 2021/2020 | | | 2022/2021 | | |
| | Total | New | Used | Total | New | Used | Total | New | Used | Total | New | Used | Total | New | Used |
| Greece, total | | | | | | | | | | | | | | | |
| Road Motor Vehicles, total | 11,800 | 8,677 | 3,123 | 14,330 | 8,411 | 5,919 | 14,523 | 9,783 | 4,740 | 21.4% | -3.1% | 89.5% | 1.3% | 16.3% | -19.9% |
| 1. Road motor cars | 9,465 | 6,440 | 3,025 | 12,007 | 6,257 | 5,750 | 11,976 | 7,343 | 4,633 | 26.9% | -2.8% | 90.1% | -0.3% | 17.4% | -19.4% |
| Passenger Cars | 7,690 | 5,791 | 1,899 | 10,087 | 5,481 | 4,606 | 10,239 | 6,471 | 3,768 | 31.2% | -5.4% | 142.5% | 1.5% | 18.1% | -18.2% |
| Buses | 169 | 26 | 143 | 184 | 69 | 115 | 153 | 68 | 85 | 8.9% | 165.4% | -19.6% | -16.8% | -1.4% | -26.1% |
| Lorries | 1,606 | 623 | 983 | 1,736 | 707 | 1,029 | 1,584 | 804 | 780 | 8.1% | 13.5% | 4.7% | -8.8% | 13.7% | -24.2% |
| 2. Motorcycles > 50 cc | 2,335 | 2,237 | 98 | 2,323 | 2,154 | 169 | 2,547 | 2,440 | 107 | -0.5% | -3.7% | 72.4% | 9.6% | 13.3% | -36.7% |
| Prefecture of Attica | | | | | | | | | | | | | | | |
| Road Motor Vehicles, total | 7,310 | 5,963 | 1,347 | 8,087 | 5,434 | 2,653 | 8,893 | 6,664 | 2,229 | 10.6% | -8.9% | 97.0% | 10.0% | 22.6% | -16.0% |
| 1. Road motor cars | 6,038 | 4,730 | 1,308 | 6,706 | 4,122 | 2,584 | 7,447 | 5,252 | 2,195 | 11.1% | -12.9% | 97.6% | 11.0% | 27.4% | -15.1% |
| Passenger Cars | 5,265 | 4,338 | 927 | 5,914 | 3,702 | 2,212 | 6,602 | 4,713 | 1,889 | 12.3% | -14.7% | 138.6% | 11.6% | 27.3% | -14.6% |
| Buses | 60 | 4 | 56 | 58 | 11 | 47 | 58 | 12 | 46 | -3.3% | 175.0% | -16.1% | 0.0% | 9.1% | -2.1% |
| Lorries | 713 | 388 | 325 | 734 | 409 | 325 | 787 | 527 | 260 | 2.9% | 5.4% | 0.0% | 7.2% | 28.9% | -20.0% |
| 2. Motorcycles > 50 cc | 1,272 | 1,233 | 39 | 1,381 | 1,312 | 69 | 1,446 | 1,412 | 34 | 8.6% | 6.4% | 76.9% | 4.7% | 7.6% | -50.7% |

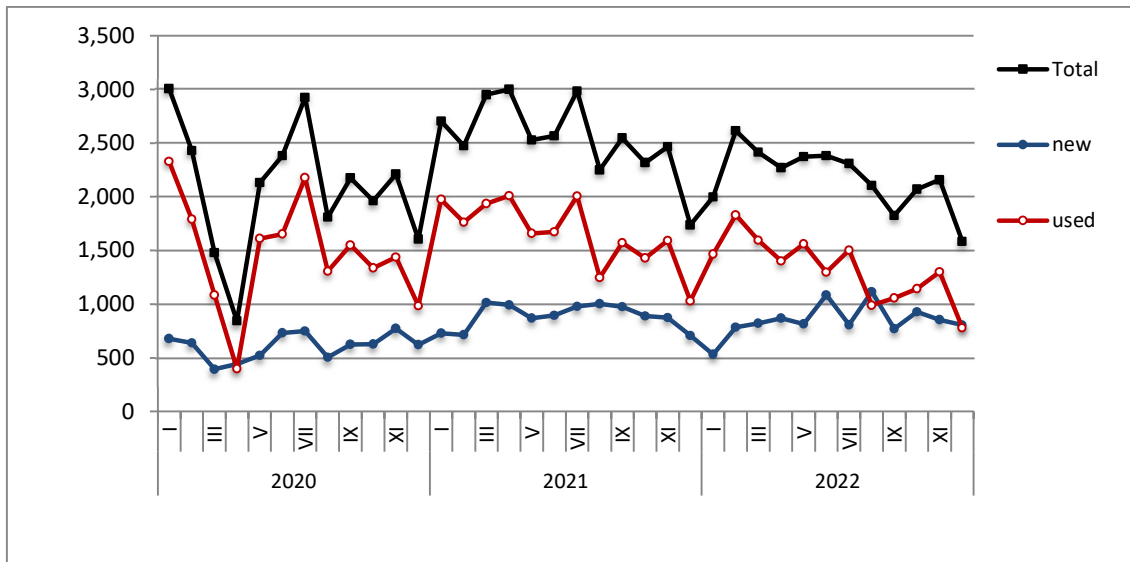
Table 2. Road motor vehicles, both new and used, put into circulation for the first time in Greece: January 2021 – December 2022

| Category of Road Motor Vehicles | Average Jan. 2021 - Dec. 2021 | | | Average Jan. 2022 - Dec. 2022 | | | Change (%) | | |
|---------------------------------|-------------------------------|--------|-------|-------------------------------|--------|-------|---|--------|--------|
| | Total | New | Used | Total | New | Used | Average Jan. 2022 - Dec. 2022 / Average Jan. 2021 - Dec. 2021 | | |
| | | | | | | | Total | New | Used |
| Greece, total | | | | | | | | | |
| Road Motor Vehicles, total | 20,614 | 12,982 | 7,632 | 22,085 | 14,277 | 7,808 | 7.1% | 10.0% | 2.3% |
| 1. Road motor cars | 16,546 | 9,279 | 7,267 | 17,094 | 9,639 | 7,455 | 3.3% | 3.9% | 2.6% |
| Passenger Cars | 13,881 | 8,356 | 5,525 | 14,820 | 8,768 | 6,052 | 6.8% | 4.9% | 9.5% |
| Buses | 122 | 37 | 85 | 99 | 22 | 77 | -18.9% | -40.5% | -9.4% |
| Lorries | 2,543 | 886 | 1,657 | 2,175 | 849 | 1,326 | -14.5% | -4.2% | -20.0% |
| 2. Motorcycles > 50 cc | 4,068 | 3,703 | 365 | 4,991 | 4,638 | 353 | 22.7% | 25.2% | -3.3% |

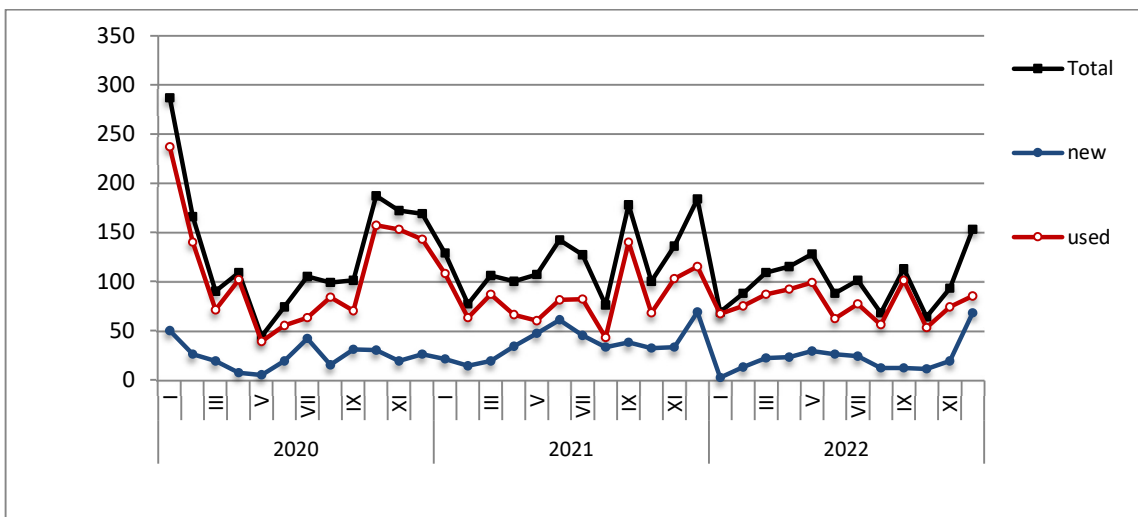
Graph 1: Passenger Cars (January 2020 – December 2022)



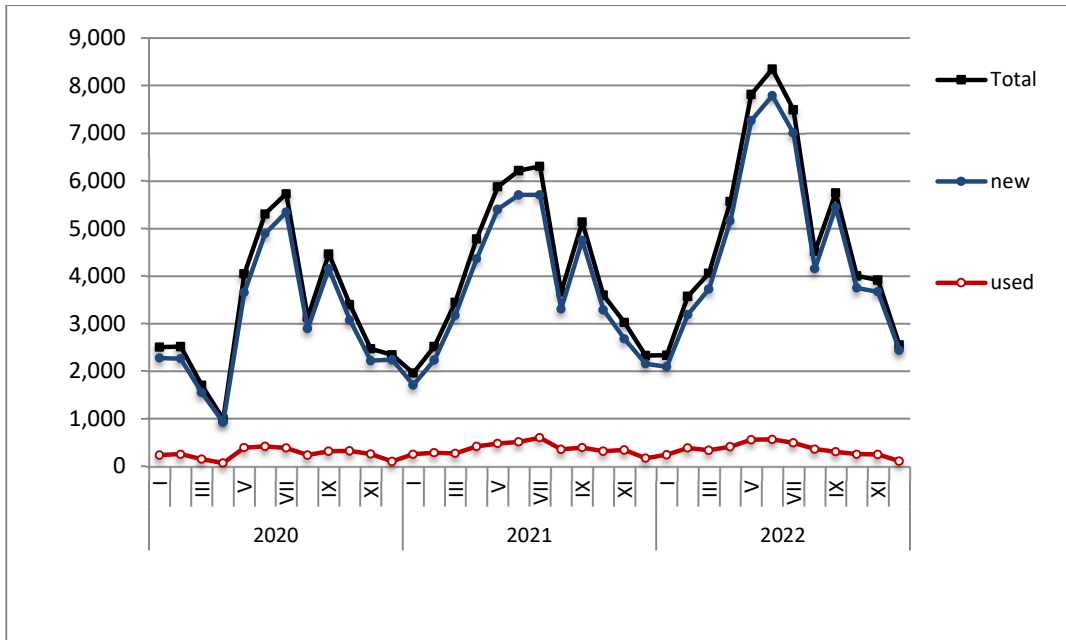
Graph 2: Lorries (January 2020 – December 2022)



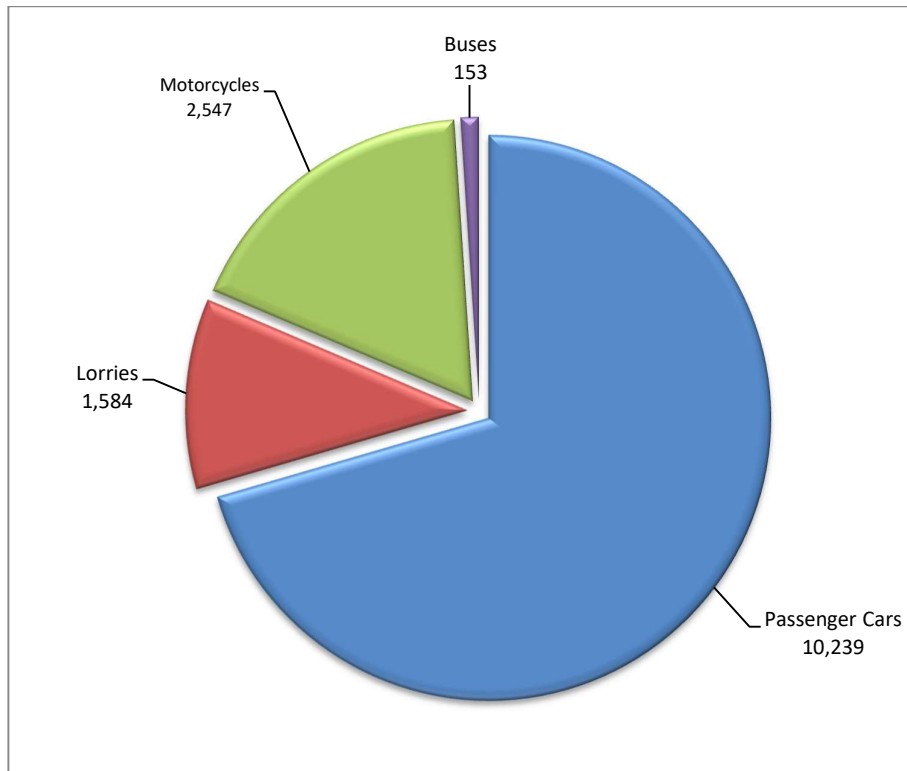
Graph 3: Buses (January 2020 – December 2022)



Graph 4: Motorcycles (January 2020 – December 2022)

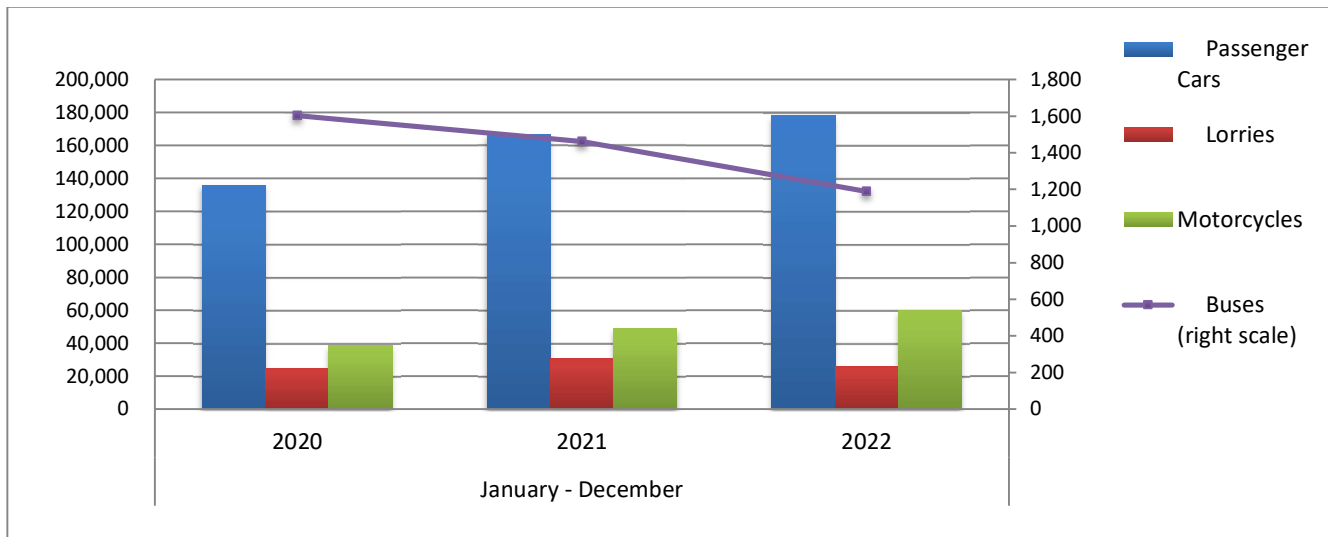


Graph 5: New Registrations of Motor Vehicles (December 2022)



| Table 3. Road motor vehicles, both new and used, put into circulation for the first time in Greece: January - December, years 2020 till 2022 | | | | | | | | | | | | | | | |
|--|--------------------|---------------|---------------|----------------|----------------|---------------|----------------|----------------|---------------|--------------|--------------|--------------|--------------|--------------|--------------|
| Category of Road Motor Vehicles | January - December | | | | | | | | | Change (%) | | | | | |
| | 2020 | | | 2021 | | | 2022 | | | 2021/2020 | | | 2022/2021 | | |
| | Total | New | Used | Total | New | Used | Total | New | Used | Total | New | Used | Total | New | Used |
| Greece, total | | | | | | | | | | | | | | | |
| Road Motor Vehicles, total | 201,143 | 122,658 | 78,485 | 247,364 | 155,793 | 91,571 | 265,026 | 171,323 | 93,703 | 23.0% | 27.0% | 16.7% | 7.1% | 10.0% | 2.3% |
| 1. Road motor cars | 162,575 | 87,194 | 75,381 | 198,552 | 111,356 | 87,196 | 205,130 | 115,661 | 89,469 | 22.1% | 27.7% | 15.7% | 3.3% | 3.9% | 2.6% |
| Passenger Cars | 136,015 | 79,597 | 56,418 | 166,574 | 100,274 | 66,300 | 177,844 | 105,219 | 72,625 | 22.5% | 26.0% | 17.5% | 6.8% | 4.9% | 9.5% |
| Buses | 1,603 | 289 | 1,314 | 1,462 | 446 | 1,016 | 1,189 | 261 | 928 | -8.8% | 54.3% | -22.7% | -18.7% | -41.5% | -8.7% |
| Lorries | 24,957 | 7,308 | 17,649 | 30,516 | 10,636 | 19,880 | 26,097 | 10,181 | 15,916 | 22.3% | 45.5% | 12.6% | -14.5% | -4.3% | -19.9% |
| 2. Motorcycles > 50 cc | 38,568 | 35,464 | 3,104 | 48,812 | 44,437 | 4,375 | 59,896 | 55,662 | 4,234 | 26.6% | 25.3% | 40.9% | 22.7% | 25.3% | -3.2% |
| Prefecture of Attica | | | | | | | | | | | | | | | |
| Road Motor Vehicles, total | 101,897 | 75,247 | 26,650 | 130,534 | 95,632 | 34,902 | 144,039 | 105,949 | 38,090 | 28.1% | 27.1% | 31.0% | 10.3% | 10.8% | 9.1% |
| 1. Road motor cars | 83,040 | 57,262 | 25,778 | 107,431 | 73,658 | 33,773 | 116,870 | 79,871 | 36,999 | 29.4% | 28.6% | 31.0% | 8.8% | 8.4% | 9.6% |
| Passenger Cars | 73,867 | 52,896 | 20,971 | 95,119 | 67,289 | 27,830 | 104,601 | 72,769 | 31,832 | 28.8% | 27.2% | 32.7% | 10.0% | 8.1% | 14.4% |
| Buses | 605 | 109 | 496 | 391 | 116 | 275 | 434 | 90 | 344 | -35.4% | 6.4% | -44.6% | 11.0% | -22.4% | 25.1% |
| Lorries | 8,568 | 4,257 | 4,311 | 11,921 | 6,253 | 5,668 | 11,835 | 7,012 | 4,823 | 39.1% | 46.9% | 31.5% | -0.7% | 12.1% | -14.9% |
| 2. Motorcycles > 50 cc | 18,857 | 17,985 | 872 | 23,103 | 21,974 | 1,129 | 27,169 | 26,078 | 1,091 | 22.5% | 22.2% | 29.5% | 17.6% | 18.7% | -3.4% |

Graph 6. New Motor Vehicles Circulation Licenses: January – December, years 2020 till 2022



Graph 7. New Registrations of Motor Vehicles: January – December 2022

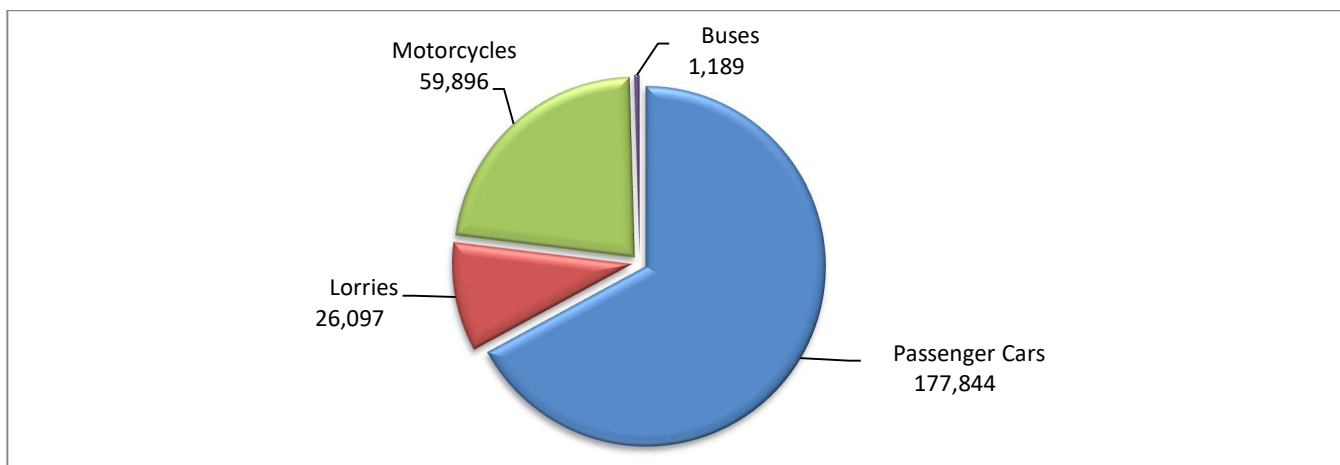


Table 4
Sales of new and used passenger cars by make: December 2022 and January - December 2022

| Make | Passenger cars | | | |
|--------------------------------|----------------|------|--------------------|-------|
| | December | | January - December | |
| | new | used | new | used |
| ALFA ROMEO | 52 | 31 | 298 | 614 |
| ALPINA | - | - | 3 | 2 |
| ALPINE | - | 1 | - | 3 |
| ASTON MARTIN | - | - | - | 1 |
| AUDI | 249 | 67 | 3,150 | 1,119 |
| AUSTIN | - | - | - | 1 |
| BENTLEY | 1 | - | 5 | 1 |
| BMW | 567 | 94 | 4,442 | 1,725 |
| BURSTNE | - | - | - | 1 |
| CADILLAC | - | - | - | 4 |
| CAPRON | - | - | 5 | 6 |
| CARTHAGO | - | - | 1 | - |
| CHAUSSON | - | - | 1 | - |
| CHEVROLET | - | 8 | - | 376 |
| CHRYSLER | - | - | - | 7 |
| CITROEN | 196 | 120 | 1,339 | 2,828 |
| CITROEN / DS | 111 | 17 | 2,633 | 241 |
| CUPRA | 13 | - | 384 | 3 |
| DACIA | 303 | 94 | 3,161 | 1,852 |
| DAIHATSU | - | 1 | - | 19 |
| DETHLEFFS | - | - | - | 1 |
| DODGE | - | - | - | 3 |
| DS | 55 | 1 | 1,348 | 23 |
| ETRUSCO | - | - | 1 | - |
| EURA MOBIL | - | - | - | 1 |
| FERRARI | - | - | 1 | 19 |
| FIAT | 145 | 174 | 4,743 | 3,814 |
| FORD | 145 | 232 | 3,578 | 4,877 |
| FIAT | - | - | 17 | - |
| GENERAL MOTORS | - | - | - | 1 |
| HOBBY | - | - | - | 3 |
| HOBBY WOHNWAGEN | - | - | - | 1 |
| HONDA | 10 | 33 | 311 | 592 |
| HUMMER | - | - | - | 1 |
| HYMER | - | - | 1 | 6 |
| HYUNDAI | 344 | 225 | 9,114 | 6,359 |
| INFINITI | - | 2 | - | 5 |
| IVECO S.p.a/LAIKA CARAVANS SpA | - | - | - | 3 |
| JAGUAR | 2 | 6 | 116 | 95 |
| JEEP | 75 | 22 | 1,854 | 337 |
| JIAYUAN | - | - | 1 | - |
| KARMANN-MOBIL | - | - | - | 1 |
| KERABOSS | - | - | 3 | 1 |
| KIA | 188 | 44 | 4,551 | 1,422 |
| KNAUS | - | - | - | 7 |
| LADA | - | - | - | 6 |
| LAMBORGHINI | - | - | 4 | 10 |

Table 4 (cont)
Sales of new and used passenger cars by make: December 2022 and January - December 2022

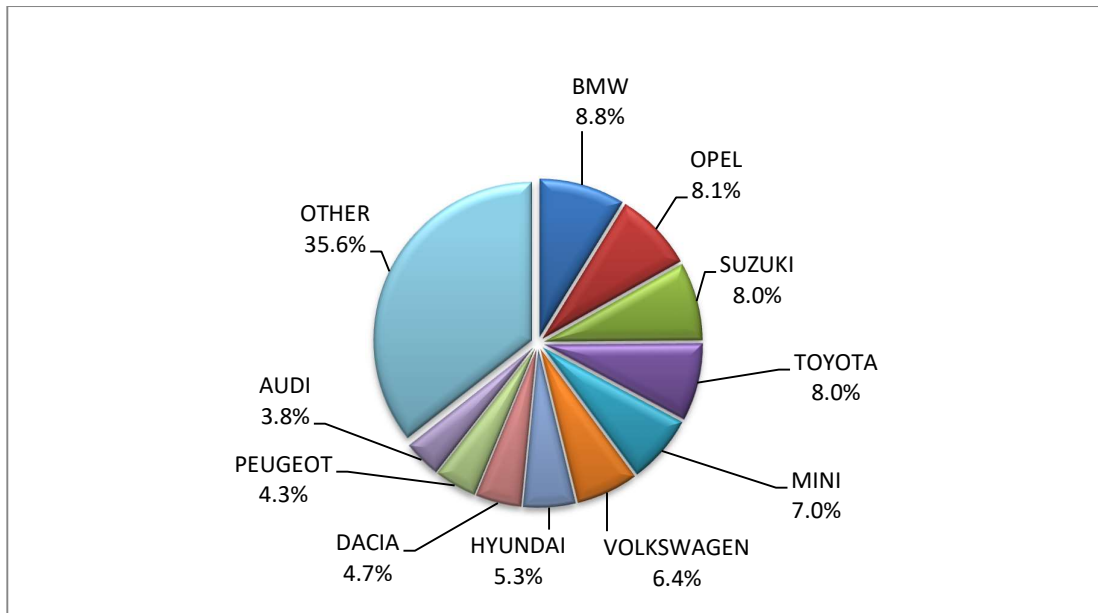
| Make | Passenger cars | | | |
|-----------------------|----------------|------|--------------------|-------|
| | December | | January - December | |
| | new | used | new | used |
| LANCIA | - | - | - | 65 |
| LAND ROVER | 43 | 44 | 510 | 577 |
| LES DAUPHINS | - | - | - | 1 |
| LEVC | - | - | 4 | - |
| LEXUS | 19 | 8 | 186 | 72 |
| LMC | - | - | - | 1 |
| LOTUS | - | - | - | 3 |
| MASERATI | 2 | 1 | 22 | 20 |
| MAZDA | 26 | 17 | 656 | 317 |
| MC LOUIS S.P.A | - | - | - | 1 |
| MCLAREN | - | 1 | - | 1 |
| MERCEDES | 207 | 274 | 4,744 | 3,424 |
| MERCEDES ¹ | - | - | 22 | - |
| MINI | 455 | 35 | 2,113 | 471 |
| MINI MAFER | - | - | - | 1 |
| MITSUBISHI | 36 | 52 | 598 | 932 |
| MOBILVETTA DESING | - | - | - | 1 |
| MOOVEO | - | - | - | 1 |
| MORGAN | - | - | - | 1 |
| NISSAN | 156 | 256 | 3,016 | 5,293 |
| NISSAN ¹ | - | - | 26 | - |
| OPEL | 523 | 259 | 5,808 | 5,246 |
| PEUGEOT | 280 | 229 | 8,993 | 4,402 |
| PEUGEOT ¹ | - | - | 1 | - |
| PEUGEOT ² | 2 | - | 48 | - |
| PORSCHE | 19 | 23 | 168 | 358 |
| POSSL | - | - | 1 | - |
| QUATTRO | - | - | - | 1 |
| RANGE ROVER | 2 | - | 5 | 33 |
| RENAULT | 217 | 474 | 3,637 | 8,438 |
| RIMOR | - | - | 1 | 1 |
| ROLLER TEAM | - | - | 1 | - |
| SAAB | - | 1 | - | 10 |
| SEAT | 114 | 48 | 1,103 | 752 |
| SKODA | 182 | 204 | 2,870 | 1,891 |
| SMART | 20 | 82 | 71 | 1,649 |
| SSANGYONG | - | - | - | 12 |
| SUBARU | 4 | 3 | 81 | 64 |
| SUN LIVING | - | - | - | 1 |
| SUZUKI | 519 | 72 | 4,403 | 1,676 |
| TATA | - | - | - | 1 |
| TESLA | 64 | 5 | 589 | 31 |
| TOYOTA | 516 | 299 | 14,878 | 6,614 |
| TRIGANO | - | - | - | 2 |
| TRIUMPH | - | - | - | 1 |
| VOLKSWAGEN | 411 | 195 | 7,664 | 3,674 |
| VOLVO | 198 | 14 | 1,931 | 192 |
| WEINSBERG | - | - | - | 3 |

Table 4 (cont)
Sales of new and used passenger cars by make: December 2022 and January - December 2022

| Make | Passenger cars | | | |
|--------------------|----------------|--------------|--------------------|---------------|
| | December | | January - December | |
| | new | used | new | used |
| ZHIDOU, ZD, ELARIS | - | - | 4 | - |
| TOTAL | 6,471 | 3,768 | 105,219 | 72,625 |

- 1 : With 2nd/3rd stage manufacturer in Greece.
- 2 : With 2nd/3rd stage manufacturer abroad.

Graph 8. Sales of new passenger cars by make (December 2022)



Graph 9. Sales of new passenger cars by make (January – December 2022)

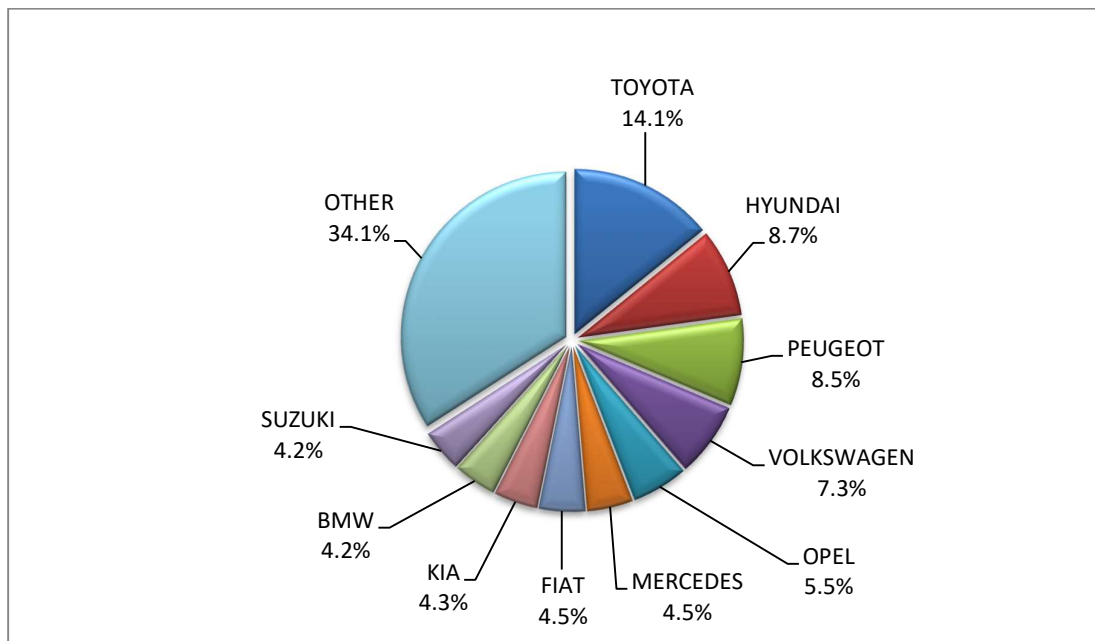


Table 5
Sales of new and used lorries by make: December 2022 and January - December 2022

| Make | Lorries | | | |
|--|----------|------|--------------------|-------|
| | December | | January - December | |
| | new | used | new | used |
| AIXAM | - | - | - | 1 |
| ASIA MOTOR | - | - | - | 1 |
| ASTRA Veicoli Industriali S.p.A TRUCK NET | - | - | 1 | - |
| AUDI | - | - | - | 2 |
| BMC Otomotiv Sanayi ve Ticaret A.Ş. KOSKERIDIS | - | - | 1 | - |
| BMW | - | - | - | 1 |
| BYD | 4 | - | 9 | - |
| CHEVROLET | - | - | - | 1 |
| CHRYSLER | - | - | - | 3 |
| CITROEN | 82 | 30 | 644 | 536 |
| DACIA | - | 2 | - | 50 |
| DAF | 1 | 15 | 8 | 499 |
| DAF ¹ | 6 | - | 50 | 1 |
| DAIHATSU | - | - | - | 3 |
| DFSK MOTOR CO.L | - | - | - | 1 |
| DODGE | - | - | - | 4 |
| FCA US LLC | - | - | - | 2 |
| FIAT | 111 | 87 | 2,327 | 1,432 |
| FIAT SOMMER GMBH | - | - | 15 | - |
| FIAT DUCATO ¹ | - | - | 1 | - |
| FIAT-IVECO | - | 1 | - | 24 |
| FORD | 194 | 125 | 1,914 | 2,067 |
| FORD ¹ | 5 | - | 50 | 1 |
| FUJI HEAVY | - | - | - | 1 |
| GENERAL MOTORS | - | - | - | 1 |
| GINAF | - | - | - | 2 |
| GOUPIL, MEGA, POLARIS, GEM | - | - | 4 | - |
| GRECAV SPA | - | 1 | - | 1 |
| HYUNDAI | - | 5 | - | 27 |
| ISUZU | 15 | 11 | 179 | 145 |
| ISUZU ¹ | - | - | 2 | - |
| IVECO | 1 | 9 | 25 | 286 |
| IVECO ¹ | 1 | - | 46 | 1 |
| IVECO ² | - | - | - | 1 |
| IVECO MAGIRUS | - | 1 | - | 23 |
| JEEP | 9 | 1 | 99 | 11 |
| KASSBOHRER | - | - | 1 | - |
| KIA | - | - | - | 8 |
| KIEFER | - | - | - | 1 |
| LADA | - | - | - | 1 |
| LAND ROVER | - | 2 | 4 | 15 |
| LEVC | - | - | 11 | - |
| MAHINDRA | - | - | - | 1 |
| MAN | - | 22 | 11 | 856 |
| MAN ¹ | 2 | 2 | 29 | 4 |

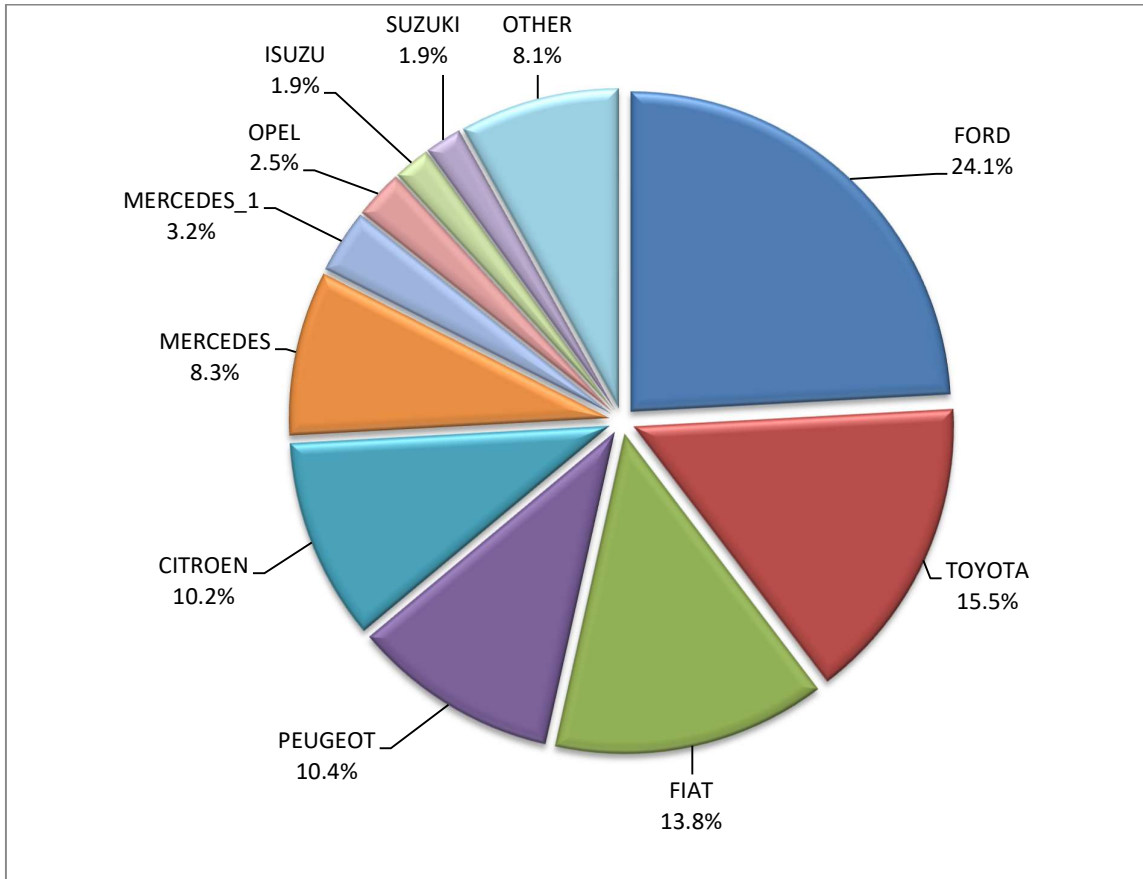
Table 5 (cont)
Sales of new and used lorries by make: December 2022 and January - December 2022

| Make | Lorries | | | |
|-------------------------|------------|------------|--------------------|---------------|
| | December | | January - December | |
| | new | used | new | used |
| MAXUS ¹ | - | - | 1 | - |
| MAXUS , LDV | - | - | 12 | 1 |
| MAZDA | - | - | - | 24 |
| MERCEDES | 67 | 183 | 373 | 3,748 |
| MERCEDES ¹ | 26 | 1 | 229 | 14 |
| MERCEDES ² | - | - | 1 | 1 |
| MITSUBISHI | 1 | 20 | 165 | 363 |
| MITSUBISHI ¹ | 5 | 1 | 76 | 1 |
| NISSAN | 5 | 32 | 85 | 527 |
| NISSAN ¹ | 1 | - | 5 | - |
| NISSAN ² | - | - | - | 1 |
| OPEL | 20 | 29 | 479 | 593 |
| OVRIGA | - | - | - | 1 |
| PAPADAKIS | - | 1 | - | 1 |
| PEUGEOT | 84 | 28 | 840 | 563 |
| PEUGEOT ¹ | 1 | - | 110 | 3 |
| PFAU | - | - | - | 4 |
| PIAGGIO | 4 | 1 | 28 | 30 |
| PIAGGIO ¹ | - | - | 11 | - |
| POLARIS | - | - | 2 | - |
| RAM | - | - | - | 1 |
| RENAULT | 5 | 52 | 247 | 1,188 |
| SCANIA | - | 32 | 29 | 757 |
| SCANIA ¹ | 1 | - | 5 | 2 |
| SEAT | - | - | - | 4 |
| SKODA | - | 1 | - | 21 |
| SSANGYONG | - | - | - | 5 |
| STEYER | - | - | - | 2 |
| STREET SCOOTER | - | - | - | 1 |
| SUZUKI | 15 | - | 253 | - |
| TECMEC A.E.B.E. | - | - | 2 | - |
| TERBERG | - | - | - | 1 |
| TOUMBAS D. & CO | - | - | 1 | - |
| TOYOTA | 125 | 24 | 1,482 | 333 |
| TOYOTA ¹ | - | - | 1 | - |
| VOLKSWAGEN | 5 | 34 | 182 | 631 |
| VOLKSWAGEN ¹ | - | - | 1 | - |
| VOLVO | 1 | 27 | 63 | 1,080 |
| VOLVO ¹ | 7 | - | 67 | 1 |
| TOTAL | 804 | 780 | 10,181 | 15,916 |

1 : With 2nd/3rd stage manufacturer in Greece.

2 : With 2nd/3rd stage manufacturer abroad.

Graph 10. Sales of new lorries by make (December 2022)



Graph 11. Sales of new lorries by make (January – December 2022)

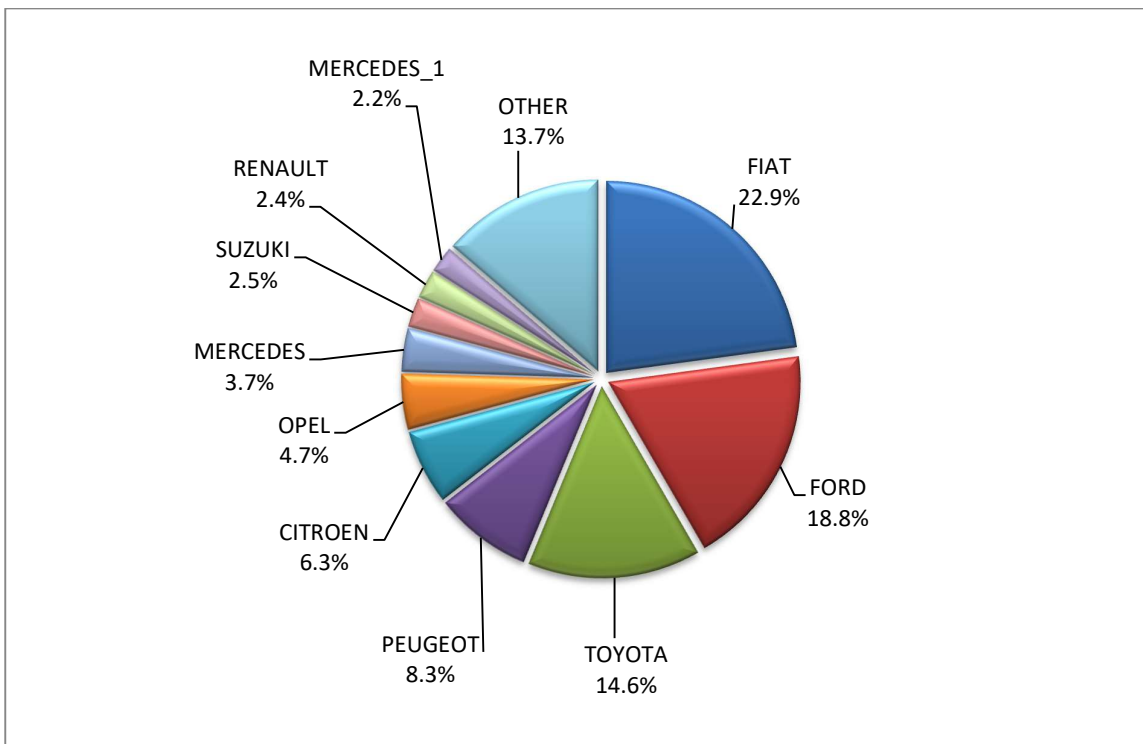


Table 6
Sales of new and used buses by make: December 2022 and January - December 2022

| Make | Buses | | | |
|---|-----------|-----------|--------------------|------------|
| | December | | January - December | |
| | new | used | new | used |
| AYATS | - | - | - | 1 |
| BMC | - | - | - | 1 |
| BOVA | - | 4 | - | 42 |
| DAF | - | - | - | 2 |
| EVOBUS | - | 1 | - | 7 |
| FIAT | - | - | - | 2 |
| FORD | - | 2 | 16 | 21 |
| FORD ¹ | - | - | 2 | - |
| GULERYUZ | - | - | - | 1 |
| HEULIEZ BUS | - | - | - | 1 |
| HYUNDAI | - | - | - | 1 |
| IRISBUS | - | - | - | 3 |
| IRIZAR | 2 | - | 3 | - |
| ISUZU, ANADOLU ISUZU, TURKUAZ, TURQUOISE, AIOS, AOS, GLOBUS | 3 | - | 15 | - |
| IVECO | 1 | - | 5 | 9 |
| KARSAN | - | - | 1 | - |
| MAN | 12 | 14 | 20 | 71 |
| MAN ² | - | 3 | - | 5 |
| MAN/NEOPLAN | - | - | - | 4 |
| MERCEDES | 18 | 46 | 29 | 573 |
| MERCEDES ¹ | 10 | 2 | 126 | 5 |
| MERCEDES ² | 4 | - | 20 | 17 |
| MERCUS | - | - | - | 2 |
| NEOPLAN | 5 | - | 7 | 17 |
| OTOKAR | 4 | 1 | 5 | 7 |
| PEUGEOT | - | - | - | 1 |
| PRODIG | - | - | - | 1 |
| RENAULT | - | - | - | 2 |
| SCANIA | - | - | - | 7 |
| SCANIA ² | 3 | - | 3 | - |
| SETRA | 3 | 8 | 3 | 89 |
| SOLARIS | - | - | - | 1 |
| TEMSA | 3 | 3 | 5 | 21 |
| VAN HOOL | - | - | - | 4 |
| VOLKSWAGEN | - | 1 | - | 1 |
| VOLKSWAGEN ² | - | - | 1 | 1 |
| VOLVO | - | - | - | 3 |
| XIAMEN KING LONG | - | - | - | 5 |
| TOTAL | 68 | 85 | 261 | 928 |

1 : With 2nd/3rd stage manufacturer in Greece.

2 : With 2nd/3rd stage manufacturer abroad.

Graph 12. Sales of new buses by make (January – December 2022)

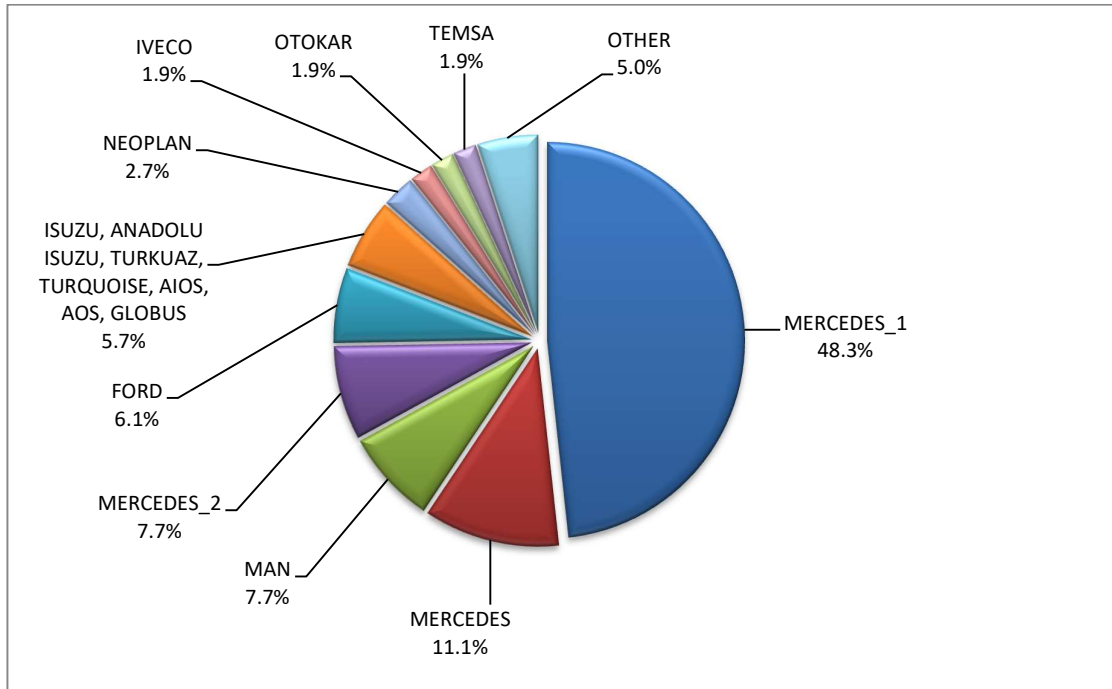


Table 7

Sales of new and used motorcycles by make or manufacturer: December 2022 and January - December 2022

| Make | Motorcycles | | | |
|---|-------------|------|--------------------|------|
| | December | | January - December | |
| | new | used | new | used |
| ACCESS | - | - | - | 1 |
| ADIVA | - | - | - | 2 |
| AIDEA | - | - | 1 | - |
| AIXAM, MEGA, MINAUTO | - | - | - | 1 |
| APRILIA | 20 | 2 | 624 | 72 |
| ARENA, ELYX, MIFUN, VMOTO | 2 | - | 18 | - |
| ARMONY, ARORA, BUKE, BULL MOTORS | - | - | 1 | - |
| ASKOLL | - | - | 1 | 1 |
| AYO, HAOJIANG, ZHONGYU, THUMP, THUMPSTAR, KIDEN, ZONTES, Junak, SENKE, TANNY, TYAN, ROMET, ROMET MOTORS, ROUTER | 1 | - | 1 | - |
| BAJAJ | 7 | - | 92 | 1 |
| BAOTIAN | - | - | - | 1 |
| BASHAN, AMGroup, AMGroup Bike, DON, RBIS, WORKER BEAR, Nomik ATV 2, APACHI, ISILDAR | - | - | 15 | - |
| BASHAN, APACHI, ISILDAR APACHI, ISILDAR, APACHE, ADVENTUREMOTORS | - | - | 3 | - |
| BELGARDA SPA | - | - | - | 1 |
| BENELLI | 19 | - | 362 | 8 |
| BETA | 4 | 1 | 103 | 12 |
| BMW | 44 | 7 | 889 | 237 |
| BOMBARDIER RECREATIONAL PRODUCTS ING (BRP) | 1 | - | 9 | 1 |
| BRIXTON | 9 | - | 175 | 3 |
| BRP | - | - | 1 | - |
| BSA | - | - | - | 1 |

Table 7 (cont)

Sales of new and used motorcycles by make or manufacturer: December 2022 and January - December 2022

| Make | Motorcycles | | | |
|--|-------------|------|--------------------|------|
| | December | | January - December | |
| | new | used | new | used |
| BUELL | - | - | - | 3 |
| CECTEK | - | - | 2 | - |
| CFMOTO | 26 | - | 1,800 | 24 |
| CHANGJIANG | - | - | 1 | - |
| CHONGQING LIFAN | - | - | - | 2 |
| CLUB CAR, LLC | - | - | - | 1 |
| DAELIM | - | - | - | 5 |
| DAYANG, DAYTONA MOTORS, NIPPONIA, DOCKER, WAYEL, SUMCO, VEEROAD, CETUR, RUTEC | 2 | - | 52 | - |
| DAYANG, DAYTONA MOTORS, NIPPONIA, DOCKER, WAYEL, SUMCO, VEEROAD, CETUR, RUTEC, ZENKO | 7 | - | 7 | - |
| DAYANG, DAYTONA MOTORS, NIPPONIA, DYMOTO, DOCKER, VEEROAD, EVO MOTORS, SUMCO, CETUR, HANSOM | - | - | 61 | - |
| DAYANG, DAYTONA MOTORS, NIPPONIA, DYMOTO, VEEROAD, EVO MOTORS, MH MOTORCYCLES, FKM, FKMOTORS | 2 | - | 71 | - |
| DAYANG, DAYTONA MOTORS, NIPPONIA, KUBA, VEEROAD, SUMCO, CETUR, RUTEC | 57 | 2 | 1,008 | 5 |
| DAYANG, DAYTONA MOTORS, NIPPONIA, SALCANO | - | - | 2 | - |
| DAYANG, DAYTONA MOTORS, NIPPONIA, VEEROAD | 108 | - | 2,848 | 16 |
| DAYANG, DAYTONA MOTORS, NIPPONIA, VEEROAD, DOCKER | 55 | - | 885 | 5 |
| DAYANG, ECOCREMO, ECOOTER, ECOOTOR, AGM, ORCAL, SUMCO | 3 | - | 14 | - |
| DAYANG, NIPPONIA, DAYTONA MOTORS, VEEROAD, SUMCO, DOCKER, MH MOTORCYCLES | 1 | - | 41 | - |
| DAYTONA | - | - | 68 | 2 |
| DERBI | - | - | - | 2 |
| DMEMOTO, Elyx Smart, OPAI, DME | - | - | 9 | - |
| DONGMA | 1 | - | 2 | - |
| DUCATI | 16 | 2 | 167 | 58 |
| EAGLE MOTORSPORTS | - | 1 | - | 1 |
| E-BROH | - | - | 1 | - |
| ECOOTER, ETRIX, AGM, DRAX, ORCAL, SUMCO | 1 | - | 13 | - |
| EFUN, ZAP | 11 | - | 120 | - |
| EMBUGGY, EVANGEL, The Original BeachBuggy, Beach Buggy | - | - | 20 | - |
| EMBUGGY, VINTAGE, EVANGEL | - | - | 22 | - |
| E-MOKE | - | - | 1 | - |
| ERIDER, ARNGREN | - | - | 1 | - |
| ESTRIMA | - | - | 2 | - |
| FANGPOWER, Kontio Motors | - | - | 24 | - |
| FANTIC MOTOR | 2 | - | 9 | - |
| FD MOTORS, FASPIDER, Daytona Motors, EVO Motors, Veeroad | 2 | - | 87 | - |
| FD MOTORS, FASPIDER, DAYTONA MOTORS, NIPPONIA, QUANTYA | 2 | - | 68 | - |
| FENGCHENG, FULLCHEER, Barman-pakro, NITSURO, VOLDORK, SPIMRI, Elektra EV, EKOE, BITMART | 1 | - | 1 | - |
| FULU, LICHI | - | - | 1 | - |
| GASGAS | - | - | 20 | 3 |
| GENERIC, EXPLORER, MALANCA, KSR Moto Austria, Motron Motorrad | 1 | - | 40 | - |
| GILERA, PIAGGIO | 1 | - | 1 | 6 |
| GLOBAL ELECTRIC | - | - | - | 1 |
| GOLDEN LION, SAKURA, ARTISAN, ETALIAN, E-mio, Fauro, Kito, Varaneo, Viverra | 2 | - | 16 | - |
| GOUPIL | - | - | 1 | - |

Table 7 (cont)

Sales of new and used motorcycles by make or manufacturer: December 2022 and January - December 2022

| Make | Motorcycles | | | |
|---|-------------|------|--------------------|------|
| | December | | January - December | |
| | new | used | new | used |
| GPX | 4 | - | 40 | - |
| GREENGO | - | 1 | - | 1 |
| GSMOON, DIVINE STAR&MOON, QSTRON | - | - | - | 1 |
| HANWAY, MASAI, JUNAK, Motorini, STMAX, ROMET, CLS, ROMET MOTORS, GEMINI, RIVERO | 2 | - | 2 | - |
| Haojiang, ZONTES, TAYO, Sharpon, IFINO, KIDEN, ZHONGYU, CUBTOM, DIYUN, NAMIN, TIM DERVI, VUKA, THUMP, R-ipper | 7 | - | 7 | - |
| HARLEY DAVIDSON | - | 3 | 12 | 94 |
| HESHAN GOUJI NANLIAN MOTORCYCLE INDUSTRY, ORCAL, AJS, HERALD MOTOR COMPANY, MACBOR, MOTOBİ | 4 | - | 5 | - |
| HONDA | 385 | 26 | 10,444 | 836 |
| HOOOON, PICKMAN | - | - | 4 | - |
| HORWIN | - | - | 18 | - |
| HSUN | - | - | - | 3 |
| HSUN, HISUN, APACHI, Mx, MASAI, HYTRACK, TRAPPER, PUMAREX, GEON, ASYAMOTOR, DAYTONA MOTORS, KRAL | 4 | - | 7 | - |
| HUAJUE, JFC, GOKA, JOCSPTS | - | - | - | 1 |
| HUSQVARNA | 4 | 1 | 126 | 34 |
| HYOSUNG | 16 | - | 21 | - |
| HYOSUNG & S&T KANUNI | 5 | - | 6 | - |
| IANYING, TYM, XINBEN, TEYIN, RIYA,ONGYUNDA, SANBEN, ALFA, Senzo, La Souris, TCB, KENTOYA | 2 | - | 6 | - |
| INDIAN MOTORCYCLE | - | - | 19 | 2 |
| ITALJET | - | - | 6 | - |
| JAWA | 3 | - | 3 | - |
| JCADI, TILGREEN, Grupo Invicta MOTOR, e-broh, FAURO | - | - | 5 | - |
| JIANSHE | 1 | - | 1 | 1 |
| JIAYUAN | 19 | - | 129 | 2 |
| JINCHENG | 23 | - | 33 | - |
| JINYI, JINYI MOTOR, DAYI MOTOR, AMGroup, AMGroup Bike, Twister Wheel, GREENWOLKE | - | - | 5 | - |
| JNEN, JUNENG, ZIPP, MOTORAN, HORS | 5 | - | 54 | - |
| KAWASAKI | 10 | - | 48 | 77 |
| KEEWAY, QJ, QJIANG | 3 | - | 3 | 3 |
| KENBO | - | - | 1 | - |
| KL | - | - | - | 2 |
| KREIDLER | - | - | - | 1 |
| KSR MOTO AUSTRI | 1 | - | 38 | - |
| KTM | 15 | 3 | 328 | 140 |
| KUBA, MH MOTORCYCLES, MGB, SHINERAY, Daytona Motors, MASH | 1 | - | 44 | 1 |
| KWANG YANG | - | - | 15 | 7 |
| KYBURZ | - | - | - | 1 |
| KYMCO | 44 | 7 | 2,012 | 610 |
| LAMBRETTA | - | - | 25 | 1 |
| LEONE | - | - | - | 1 |
| LIFAN | - | - | - | 2 |
| LIFAN, HONLEI, QIPAI, SKYGO, GTS, PINK, Daytona MOTORS | - | - | 10 | - |
| LIFAN, HONLEI, SKYGO, BISAN-LIFAN | 4 | - | 5 | - |
| Lingzhida, LINZDA, LINDN, LINYI, LONGMAO, NLIGHT | 1 | - | 24 | - |
| LINHAI | - | - | 1 | 27 |
| LINHAI, KUBA, ONLINE, LHY | 1 | - | 1 | 9 |

Table 7 (cont)

Sales of new and used motorcycles by make or manufacturer: December 2022 and January - December 2022

| Make | Motorcycles | | | |
|---|-------------|------|--------------------|------|
| | December | | January - December | |
| | new | used | new | used |
| LINHAI, SINNIS | 6 | - | 14 | - |
| LML | - | - | - | 1 |
| LOJO, SUNPULSE | 3 | - | 4 | - |
| LONCIN, KUBA, RKS, ITALIKA, SUNRACE, SKY, MALAGUTI, SUPERBIKE, ROCKET, NOVELBAT, TIGREMOTO, GREEN, TRIDIAMOND | 27 | - | 469 | 5 |
| LONGJIA, ORCAL, NECO | - | - | 167 | 1 |
| LONGJIA, ORCAL, NECO, ALFASCOOTERS, VGA, ROMET MOTORS, RYMCO, ASUS, OVER, CAROLYN, KANUNI, BTC, TURBHO, ITALMOTO | 6 | - | 98 | 1 |
| LONGJIA, ORCAL, NECO, ROUTER, VGA, BARTON, MOTORS, moretti, CAROLYN, KANUNI, BTC, AGM, ALFASCOOTERS, ROMET MOTORS | - | - | - | 10 |
| LONGJIA, ORCAL, NECO, VGA, ROMET MOTORS, ROUTER, lexmoto, Gemini, MH, motorcycles | 11 | 1 | 57 | 1 |
| LUQI, TWISTER WHEEL, SPYDER WHEELZ, DJJD, GTS, TEKUON, Eway, Emoto, Bikers, i-coco | - | - | 1 | - |
| LVNENG | 4 | - | 17 | - |
| LVNENG, SKAND, VEMO, SMARTWAY, IVA, HYPE-BIKE, SENZO, MONASSO, genergia | - | - | 1 | - |
| MACBOR, RVM, COLOVE, ORCAL, DAYTONA MOTORS, ZF-KY, Lexmoto, OVER BIKES, YUKI, AJS | 5 | - | 113 | - |
| MALAGUTI | 14 | - | 319 | 13 |
| MBK | 3 | - | 9 | 6 |
| MELEX | - | - | 5 | - |
| MG MOTO | - | - | - | 1 |
| MGK HM | 71 | 1 | 1,007 | 10 |
| MILG | - | - | 2 | - |
| MODEN, BTC, Motowell, COLIBRI, VIARELLI | - | - | 1 | - |
| MONTESA HONDA | - | - | - | 1 |
| MOTO GUZZI | 8 | 3 | 63 | 10 |
| MOTO MORINI | 4 | - | 29 | - |
| MOTO-ROMA | 1 | - | 1 | - |
| MOTRON MOTORRAD, ZONGSHEN | - | - | 10 | - |
| MV AGUSTA | 2 | - | 10 | 5 |
| N.S.U | - | - | - | 1 |
| NACIONAL MOTOR SAU | - | - | - | 1 |
| NEV, N, FLYBO, JM, MALON, Herox, Baoya, ZILENT | - | - | - | 1 |
| NIU, NUUV | 3 | - | 97 | 1 |
| OPAI | - | - | 7 | - |
| ORCAL, SOMOTO, AJS, SENKE, HERALD, ITALJET, WACCO, MOTOBİ, CLEVELAND CYCLEWERKS ACE, MERCURY, SAXXX, SFM | - | - | 1 | - |
| PEUGEOT | 2 | - | 10 | 30 |
| PGO | - | - | - | 1 |
| PIAGGIO | 310 | 12 | 8,405 | 453 |
| PILOT CAR | - | - | 1 | - |
| PIONEER, LEXMOTO, PULSE, BULLIT, HERALD, WOTTAN, EURO MOTORS, VERVEMOTO, SP BIKE, EXPLORER, RIDE | 3 | - | 4 | - |
| POLARIS | 4 | - | 116 | 4 |
| QINGQI, CLEVELAND, CYCLEWERKS ACE, CLEVELAND ACE, CLEVELAND CYCLEWERKS ACE DELUXE | 2 | - | 2 | 1 |
| QINGQI, I-MOTO | - | - | 1 | - |
| QINGQI, KADIRGA | - | - | 3 | - |
| QINGQI, PIONEER, KENROD, PEUGEOT | - | - | - | 1 |

Table 7 (cont)

Sales of new and used motorcycles by make or manufacturer: December 2022 and January - December 2022

| Make | Motorcycles | | | |
|---|-------------|------|--------------------|------|
| | December | | January - December | |
| | new | used | new | used |
| QJ , QJIANG, KEEWAY, LEONE | 9 | - | 15 | 3 |
| QJ, QJIANG, GENERIC, MTR, RIDE | - | - | 2 | - |
| QJ, QJIANG, KEEWAY, LEONE, KUBA, RKS, BENELLI, VENGO,QJMOTOR, B MOTOBI, ONLINE | 2 | 1 | 27 | 1 |
| QJ, QJIANG, KEEWAY, LEONE, RKS, BENELLI, EMPIRE KEEWAY, KUBA | 1 | - | 15 | - |
| QJIANG | 5 | - | 5 | - |
| QUADRO, QUADRO VEHICLES | 1 | - | 2 | 2 |
| RAY ELECTRIC MOTORS | - | - | 9 | - |
| REDMOTO | - | - | 4 | 1 |
| REGIS | 1 | - | 1 | - |
| RENAULT | - | 1 | - | 11 |
| RENLI | - | - | 53 | - |
| RIEJU, DRAC | - | - | 1 | - |
| RKV | - | - | - | 1 |
| ROYAL ENFIELD | 12 | - | 172 | - |
| Royalloy, Royal Alloy, RA, SCOMADI, VALENTINO, VALENTINO MOTORI | - | - | 24 | - |
| RVM, MACBOR, COLOVE, ORCAL, DAYTONA MOTORS | - | - | 1 | - |
| SAKURA, GOLDEN LION, ARTISAN, Fayro, ETALIAN, Viverra, Kito, E-mia, velca, E.F.O., E-KUMA, BOLIDE, LINZE | - | - | 33 | - |
| SAN YANG | - | - | - | 7 |
| SCUTUM, ETRIX, SILENCE | 11 | - | 28 | - |
| SEGWAY | 1 | - | 127 | 1 |
| SENKE, SENKO, SENKI, SENKY, HALI, JIETOUBAWANG, NANLIAN, XINHALI, PGO, SENKE. HALI | 3 | - | 6 | - |
| SHANYANG, ATLAS PANTHER, YAMAZUKI MOTO, MOTORKING, Hirlee, XB | 5 | - | 29 | - |
| SHARE'NGO, ZHIDOU, ZD | 19 | - | 41 | - |
| SHENGWO NEW ENERGY, YUKI | 1 | - | 19 | - |
| SHERCO | 4 | - | 15 | 4 |
| SHINERAY, SWM | - | - | 4 | - |
| SILENCE, SCUTUM, ETRIX | 10 | - | 85 | 1 |
| SI-ZWEIRAD | - | - | - | 1 |
| SKYTEAM, SACIN, CSR, METALCO, SOKUDO, BAZUKA, MINICO, MOTOSBASI, MOTOS BORDOY, SUMKO, ROXON, MONKEY BIKES | 1 | - | 20 | 3 |
| SUKIDA, RARIRO, KAIER, HAOJIAN | - | - | 1 | - |
| SUZUKI | 9 | 6 | 384 | 191 |
| SWM | 2 | - | 4 | 1 |
| SYM | 557 | 6 | 13,904 | 213 |
| TAIWAN GOLDEN B | - | - | - | 1 |
| TARO, JUNAK, BARTON MOTORS, ORCAL, Lexmoto, MITT, NECO, WOTTAN, MAGPOWER, ADAMOTO, MAXON, MAX-ON, TRMOTOR, CHUANL | 16 | - | 303 | 2 |
| TAURIS | - | - | - | 1 |
| TAYO, HAOJIANG, ZHONGYU, THUMP, THUMPSTAR, KIDEN, ZONTES, Junak, SENKE, TANNY, TYAN, ROMET, ROMET MOTORS, ROUTER | 18 | - | 506 | 3 |
| TAYO, ZONTES, KIDEN, Haojiang, ZHONGYU, Sharpon, TANNY, TYAN, Senke, B BETA, Daytona Motors | 9 | - | 218 | 3 |
| TGB | - | - | 20 | 5 |
| TIANYING, RIYA, HONGYUNDA, TYM,HONLING, TAMCO, ALISON, DMK MOTORS, WLIE,LEEWAY, WLXQ, AP Gmoto, ALFA | 1 | - | 9 | - |
| TINBOT, KOLLTER, MASAI, INTO, VIARELLI, EDRIIVE, DuroCar, MGK HM, Fauro, BRINCO | - | - | 6 | - |

Table 7 (cont)

Sales of new and used motorcycles by make or manufacturer: December 2022 and January - December 2022

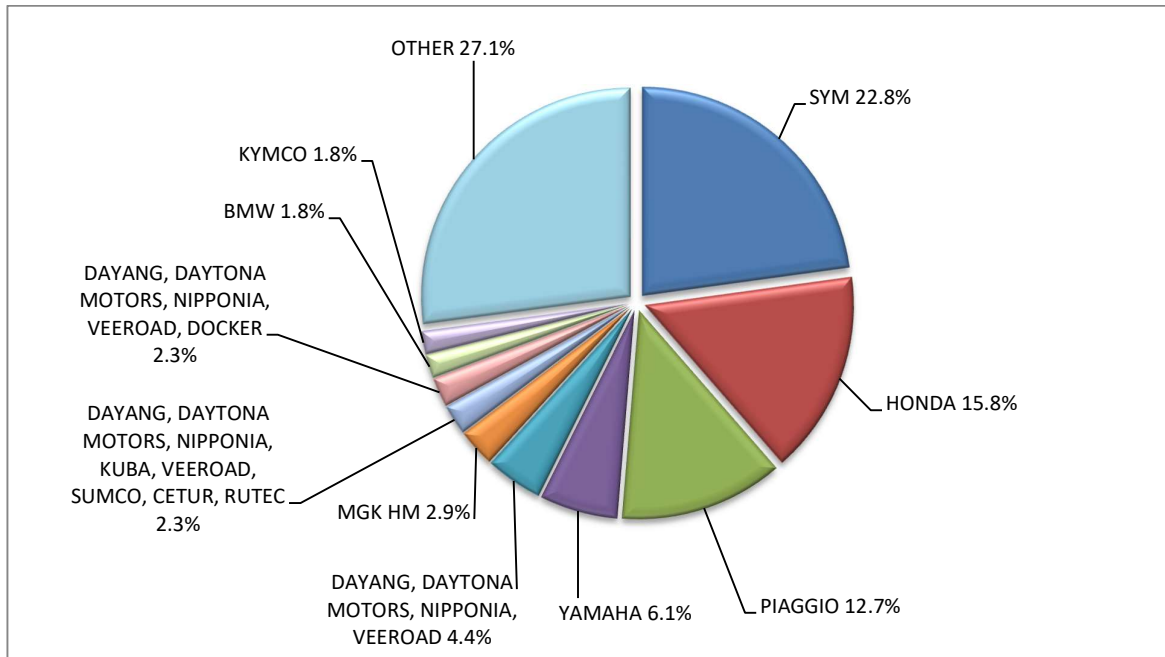
| Make | Motorcycles | | | |
|---|-------------|------|--------------------|------|
| | December | | January - December | |
| | new | used | new | used |
| TINGWANG, X-TEAM, TIKING | - | - | 1 | - |
| TM RACING | - | - | 1 | - |
| TORROT, QUADRO VEHICLES | - | - | 6 | - |
| TRIUMPH | 22 | - | 301 | 21 |
| TROMOX | 5 | - | 7 | - |
| VESPA | - | - | - | 1 |
| VMOTO, E-MAX, FMC, CSR, ROADSIGN, KENTOYA, JINYING, GOES, VETRIX, DAO, VENGO, TELL | - | - | 1 | - |
| VMOTO-SOCO, E-MAX, VMOTO, SUPER SOCO | 14 | - | 96 | - |
| VOLTA, VTA, REVOLT | 1 | - | 24 | - |
| WONJAN, SAMADA | - | - | 3 | - |
| WONJAN,THRUST MOTOR, WMOTO, KEEWAY, TD | - | - | - | 1 |
| WUZHENG | - | - | 1 | - |
| XEV, X, XEV YOYO | - | - | 4 | - |
| XGJAO, KAISAR, SKYJET, SOKON, YUKI, AJS, VEEROAD, DAYTONA MOTORS, YUAN,KRAL, PULSE,CELIK, LEXMOTO, SOKON | - | - | - | 2 |
| XGJAO, ZIPP, TOROS, ROMET, ROMET MOTORS, ROUTER, VEEROAD, DAYTONA MOTORS, GEMINI, MH MOTORCYCLES, MTG MOTORS | 24 | - | 29 | - |
| XIAMEN XIASHING | - | - | - | 3 |
| XINDAYANG | - | 1 | - | 1 |
| XINRI, SUNRA ,APACHI, ISILDAR, ISILDAR APACHI, Wayscral, KRAL | 2 | - | 95 | - |
| XUFENG, SHUNLONG, TONGXINGTIANXIA, ZOLOO | - | - | 2 | - |
| XY | - | - | - | 1 |
| YADEA | 2 | - | 11 | - |
| YAMAHA | 148 | 19 | 4,439 | 850 |
| YASAN MOTOR, Kito | - | - | 6 | - |
| YIBEN, MEIDUO, VONROAD, WUBEN, NIM | 1 | - | 1 | - |
| YINGANG, BENYI, ROMET MOTORS, YUKI, ROUTER, MOTORAN, DAYTONA MOTORS, M1NSK, HAMACHI, KUBA, MONDIAL | 1 | - | 6 | - |
| YINXIANG, KENBO | 4 | - | 4 | - |
| YINXIANG, MONDIAL, GEMINI, TCB | - | - | 5 | - |
| YIYING, BENZHOU, TRUVA | - | - | - | 1 |
| ZERO MOTORCYCLES | - | - | 12 | 1 |
| ZHEJIANG CFMOTO | - | - | 2 | - |
| ZHEJIANG QIANJ. | - | - | - | 1 |
| ZHEJIANG RENLI | - | - | 1 | - |
| ZHIDOU , ZD, RKS | 1 | - | 1 | - |
| ZHIDOU, SHARE'NG | - | - | - | 1 |
| ZHONGNENG, ASYA, DADO, ZNEN, BARON | - | - | - | 1 |
| ZHONGNENG, ZNEN, AGM, AJS, YUKI, COLIBRI, EUROCKA, BTC, NOVA MOTORS, LEXMOTO, Actionbikes Motors | 10 | - | 26 | - |
| ZHONGNENG, ZNEN, AGM, BTC, CLS, COLIBRI, DAYTONA MOTORS, DERRACE, DOCKER, JM MOTORS, KUBA, La souris, LEXMOTO | 4 | - | 72 | 1 |
| ZHONGYU, THUMP, THUMPSDAR, KIDEN, ZONTES, Junak | - | - | 1 | - |
| ZONGSHEN | 15 | - | 22 | - |
| ZONGSHEN, ZIP STAR, Lexmoto, ICONE, VORTEX, MINSK, MACBOR, MONDIAL, ROMET MOTORS ,SINNIS, SPARKSTER, OVER BIKES | 11 | - | 28 | - |
| ZONGSHEN, ZIPSTAR, ICONE, JUNAK, Lexmoto, MH Motorcycles, MINSK,MONDIAL, ROMET MOTORS, SINNIS, SPARKSTER | 3 | - | 5 | - |
| ZONGSHEN, ZIPSTAR, ZEALSUN, KENTO | 6 | - | 14 | - |

Table 7 (cont)

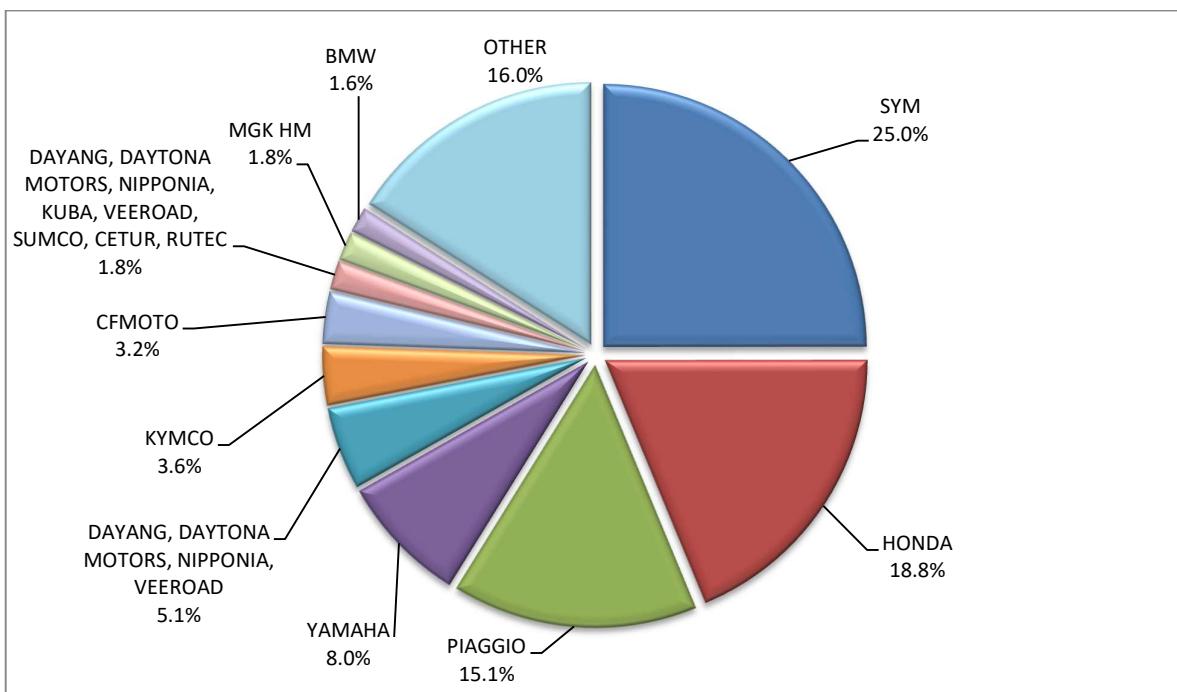
Sales of new and used motorcycles by make or manufacturer: December 2022 and January - December 2022

| Make | Motorcycles | | | |
|---|--------------|------------|--------------------|--------------|
| | December | | January - December | |
| | new | used | new | used |
| ZHONGNENG, ZNEN, AGM, BTC, CLS, COLIBRI | 7 | - | 9 | - |
| TOTAL | 2,440 | 107 | 55,662 | 4,234 |

Graph 13. Sales of new motorcycles (December 2022)



Graph 14. Sales of new motorcycles (January – December 2022)



EXPLANATORY NOTES

| | |
|---|--|
| Survey on the issuing of new road motor vehicle circulation licenses | The survey on the issuing of new motor vehicle circulation licenses is a census survey. The released data give information, at country level, on the brand and type of the motor vehicle, as well as whether it is new or used. The survey does not include vehicles that move on rails, trolley busses, agricultural tractors and machinery. In addition, the following are excluded: all motor vehicles of the Armed Forces, Police, Fire Brigade, State Services, Diplomatic Corps, Foreign Missions, and Invalids of Wars, as well as motorcycles with a cylinder capacity less than 50 cc. |
| Legal basis | Law 3832/2010 |
| Reference Period | December 2022 |
| Coverage | The production of monthly data is based on the registers held by the Ministry of Infrastructure, Transport and Networks, which records all the monthly changes observed in the vehicle registration licenses at country level. |
| Definitions | <p>Road motor vehicle is any vehicle that, irrespective of the number of wheels, is moved by an engine and is designed to transport persons or cargo or both of them, either they are on the same single vehicle or on a trailer carried by the main motor vehicle.</p> <p>New road motor vehicle is any motor vehicle that is registered for the first time in Greece during the reference month and has not been put into circulation in any other country.</p> <p>Used motor vehicle is any motor vehicle that is registered for the first time in Greece and has been imported as a used one from abroad</p> <p>Passenger motor vehicle: it is a motor vehicle designed to carry mostly people, having no more than 9 seats, including the driver's seat.</p> <p>Bus: it is a motor vehicle, which is designed to carry mostly people, having more than 10 seats, including the driver's seat. In the corresponding tables of this announcement, this category also includes articulated buses.</p> <p>Lorry: it is motor vehicle designed to carry mostly cargo. In the corresponding tables of this announcement, this category also includes tractors, tow trucks, articulated tractors, and trucks with trailers.</p> <p>Motorcycle: any two-wheeled motor vehicle, with or without sidecar, with maximum authorized design speed over 45 km/h, or in case it is powered by a combustion engine, with a cylinder capacity of 50 cc or over. In the corresponding tables of this announcement, this category also includes the three-wheeled motor vehicles – motor tricycles.</p> <p>Tricycle motor vehicle: it is a motor vehicle with three symmetrical wheels with maximum authorized design speed over 45 km/h, or in case it is powered by a combustion engine, with a cylinder capacity over the 50 cc. This category also includes four-wheel vehicles, except the light four-wheel motorcycles, whose empty vehicle tare (excluding the weight of the fuel or mixture of fuel-oil or the weight of the batteries for electric cars) is up to 400 kg in the case the vehicle is designed for passenger use or up to 550 kg in case the vehicle is designed to carry cargo and whose engine is up to 15KW.</p> |
| Methodology | Exhaustive Survey. The primary data derive from the Ministry of Infrastructure, Transport and Networks and are based on the issuing of new circulation licenses as they are registered by the Regional Offices for Transport and Communications. |
| References | More information (graphs, tables) concerning the survey on the issuing of new motor vehicle circulation licenses are available on the webpage of ELSTAT, www.statistics.gr , under the link http://www.statistics.gr/en/statistics/-/publication/SME24/ |