



## **PRESS RELEASE**

### **ISSUING OF MOTOR VEHICLE LICENSES: JANUARY 2022**

The Hellenic Statistical Authority announces that in January 2022, 14,044 road motor cars (both new and used from abroad) were put into circulation for the first time, recording a 12.1% decrease compared with the corresponding month of 2021 when the number of road motor cars was 15,983. In January 2021, a 28.5% decrease had been observed in comparison with the corresponding month of 2020 (Table 1, Graphs 1,2,3,5). A total number of 6,057 new cars were put into circulation in January 2022 compared with 8,478 in January 2021, recording a 28.6% decrease.

The new motorcycles over 50cc (both new and used from abroad) that were put into circulation for the first time in January 2022 amounted to 2,331, against 1,957 in 2021, thus recording a 19.1% increase. In January 2021, a 21.9% decrease had been observed in comparison with the corresponding month of 2020 (Table 1, Graph 4). Out of the above motorcycles 2,092 were new, while the corresponding figure in January 2021 was 1,704, recording a 22.8% increase.

*Information on methodological issues:*

*Sectoral Statistics Division*

*Transport Statistics Section*

Pota Tzortzi, Konstantinos Menexes

Tel: +30 213 135 2187, +30 213 135 3055

[e-mail: p.tzortzi@statistics.gr](mailto:p.tzortzi@statistics.gr), [k.menexes@statistics.gr](mailto:k.menexes@statistics.gr)

Information for data provision:

Tel: +30 213 135 2022

[e-mail: data.dissem@statistics.gr](mailto:data.dissem@statistics.gr)

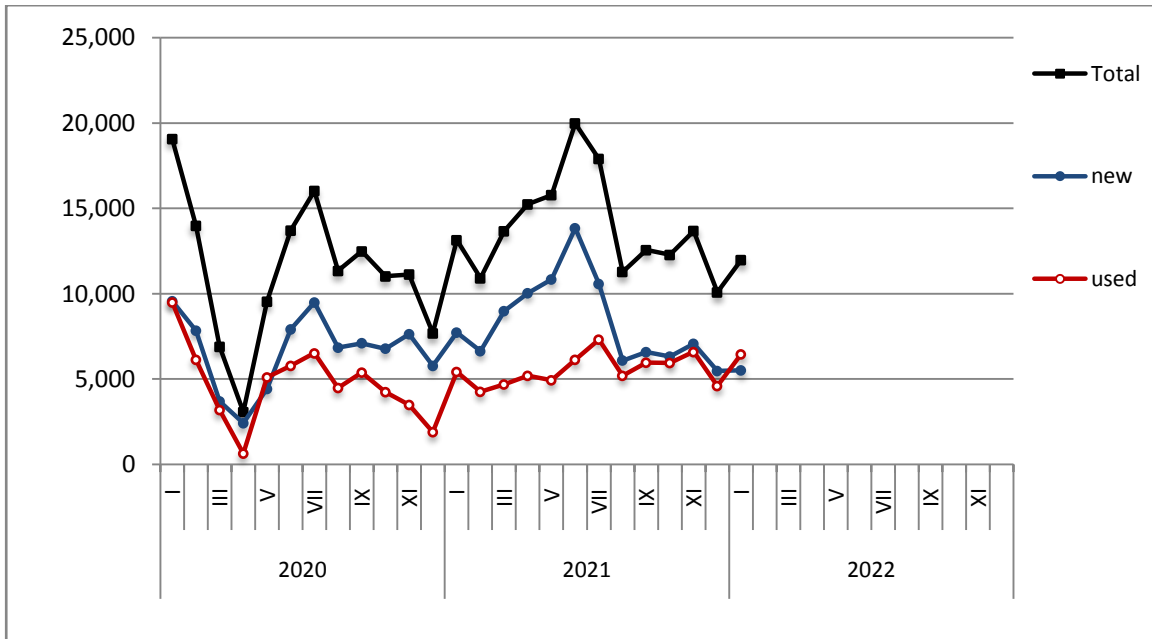
Table 1. Road motor vehicles, both new and used, put into circulation for the first time in Greece: January 2020 - 2022

Category of Road Motor Vehicles	January									Change (%)					
	2020			2021			2022			2021/2020			2022/2021		
	Total	New	Used	Total	New	Used	Total	New	Used	Total	New	Used	Total	New	Used
<b>Greece, total</b>															
Road Motor Vehicles,total	24,860	12,577	12,283	17,940	10,182	7,758	16,375	8,149	8,226	-27.8%	-19.0%	-36.8%	-8.7%	-20.0%	6.0%
1. Road motor cars	22,355	10,303	12,052	15,983	8,478	7,505	14,044	6,057	7,987	-28.5%	-17.7%	-37.7%	-12.1%	-28.6%	6.4%
Passenger Cars	19,061	9,574	9,487	13,151	7,729	5,422	11,977	5,522	6,455	-31.0%	-19.3%	-42.8%	-8.9%	-28.6%	19.1%
Buses	287	50	237	129	21	108	69	2	67	-55.1%	-58.0%	-54.4%	-46.5%	-90.5%	-38.0%
Lorries	3,007	679	2,328	2,703	728	1,975	1,998	533	1,465	-10.1%	7.2%	-15.2%	-26.1%	-26.8%	-25.8%
2. Motorcycles > 50 cc	2,505	2,274	231	1,957	1,704	253	2,331	2,092	239	-21.9%	-25.1%	9.5%	19.1%	22.8%	-5.5%
<b>Prefecture of Attica</b>															
Road Motor Vehicles,total	11,259	7,731	3,528	9,417	6,655	2,762	7,587	5,132	2,455	-16.4%	-13.9%	-21.7%	-19.4%	-22.9%	-11.1%
1. Road motor cars	9,864	6,406	3,458	8,138	5,454	2,684	6,347	3,966	2,381	-17.5%	-14.9%	-22.4%	-22.0%	-27.3%	-11.3%
Passenger Cars	8,955	6,061	2,894	7,179	5,057	2,122	5,773	3,432	2,341	-19.8%	-16.6%	-26.7%	-19.6%	-32.1%	10.3%
Buses	116	35	81	30	11	19	21	1	20	-74.1%	-68.6%	-76.5%	-30.0%	-90.9%	5.3%
Lorries	793	310	483	929	386	543	553	533	20	17.2%	24.5%	12.4%	-40.5%	38.1%	-96.3%
2. Motorcycles > 50 cc	1,395	1,325	70	1,279	1,201	78	1,240	1,166	74	-8.3%	-9.4%	11.4%	-3.0%	-2.9%	-5.1%

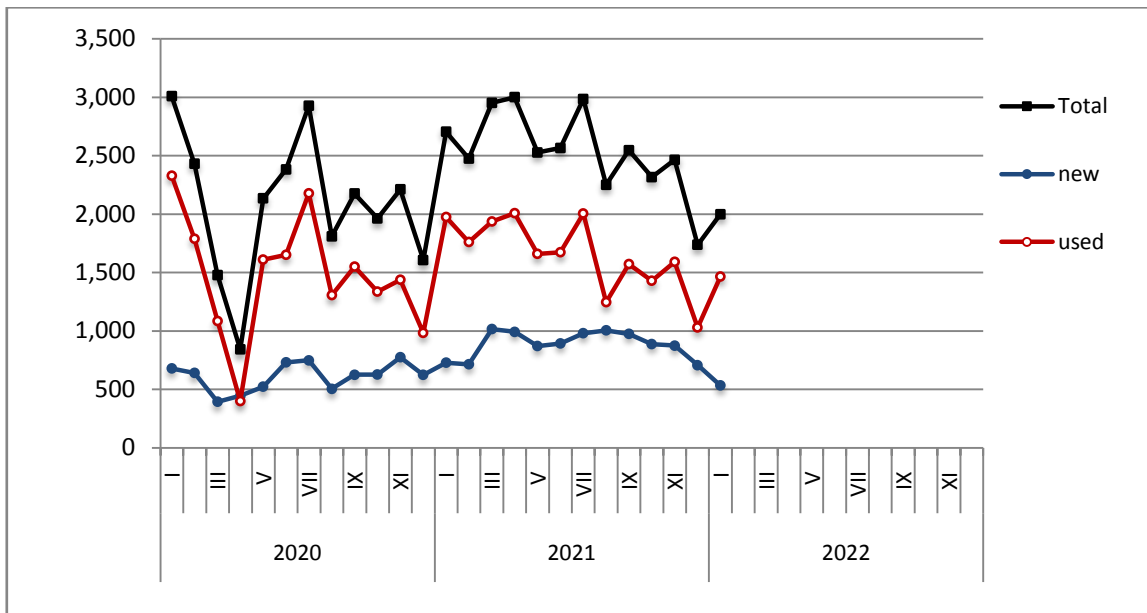
Table 2. Road motor vehicles, both new and used, put into circulation for the first time in Greece: February 2020 - January 2022

Category of Road Motor Vehicles	Average Feb. 2020 - Jan 2021			Average Feb. 2021 - Jan 2022			Change (%)		
							Average Feb. 2021 - Jan 2022 / Average Feb. 2020 - Jan 2021		
	Total	New	Used	Total	New	Used	Total	New	Used
<b>Greece, total</b>									
Road Motor Vehicles,total	16,184	10,020	6,164	20,483	12,814	7,669	26.6%	27.9%	24.4%
1. Road motor cars	13,016	7,113	5,903	16,384	9,078	7,306	25.9%	27.6%	23.8%
Passenger Cars	10,842	6,479	4,363	13,783	8,172	5,611	27.1%	26.1%	28.6%
Buses	120	21	99	117	36	81	-2.5%	71.4%	-18.2%
Lorries	2,054	613	1,441	2,484	870	1,614	20.9%	41.9%	12.0%
2. Motorcycles > 50 cc	3,168	2,907	261	4,099	3,736	363	29.4%	28.5%	39.1%

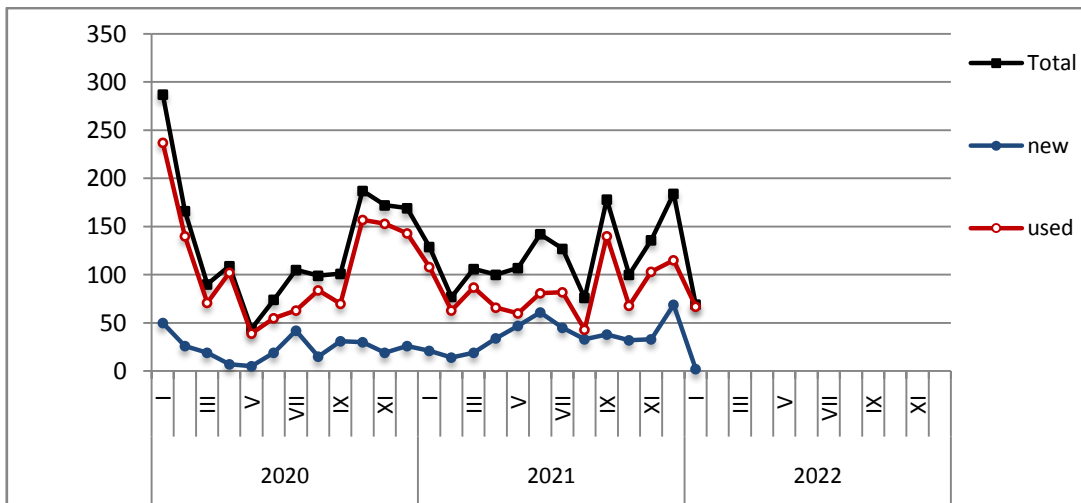
**Graph 1: Passenger Cars (January 2020 - January 2022)**



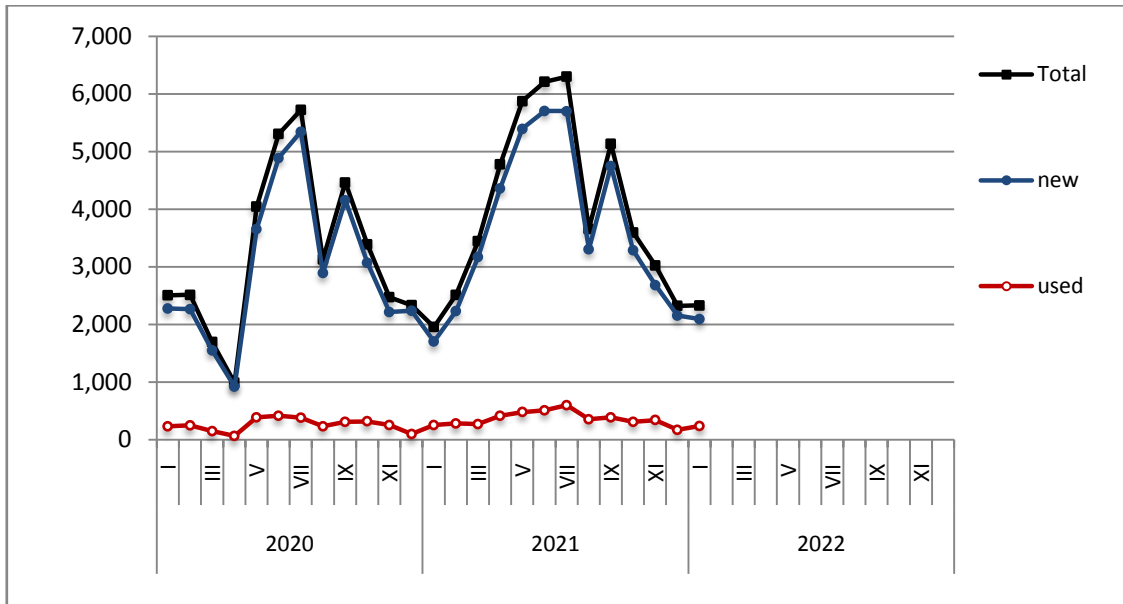
**Graph 2: Lorries (January 2020 - January 2022)**



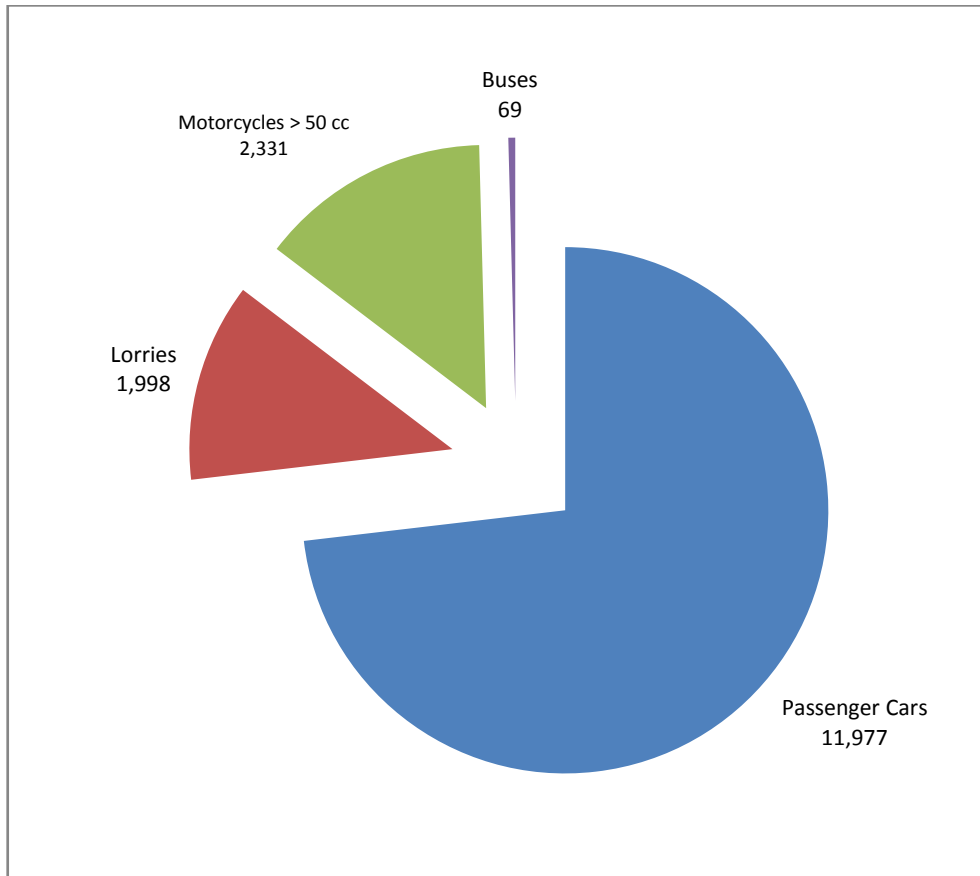
**Graph 3: Buses (January 2020 - January 2022)**



**Graph 4: Motorcycles (January 2020 - January 2022)**



**Graph 5: New Registrations of Motor Vehicles (January 2022)**



**Table 3**  
**Sales of new and used passenger cars by make: January 2022**

Make	Passenger cars	
	January	
	new	used
ALFA ROMEO	9	66
AUDI	233	115
BMW	215	166
CADILLAC	-	1
CAPRON	-	1
CARTHAGO	1	-
CHEVROLET	-	54
CHRYSLER	-	4
CITROEN	76	204
CITROEN / DS	176	8
CUPRA	20	-
DACIA	319	161
DAIHATSU	-	3
DETHLEFFS	-	1
DS	15	1
ETRUSCO	1	-
FERRARI	-	2
FIAT	63	320
FORD	63	431
HOBBY WOHNWAGEN	-	1
HONDA	9	64
HYUNDAI	544	665
JAGUAR	1	11
JEEP	268	23
KIA	148	143
KNAUS	-	3
LADA	-	1
LAMBORGHINI	-	2
LANCIA	-	7
LAND ROVER	17	41
LEXUS	9	4
LMC	-	1
MASERATI	1	1
MAZDA	14	31
MERCEDES	117	251
MERCEDES <sup>1</sup>	2	-
MINI	142	34
MITSUBISHI	-	60
NISSAN	231	518
NISSAN <sup>1</sup>	6	-
OPEL	537	466
PEUGEOT	307	323
PEUGEOT <sup>2</sup>	21	-
PORSCHE	9	27
QUATTRO	-	1
RANGE ROVER	-	2
RENAULT	155	672

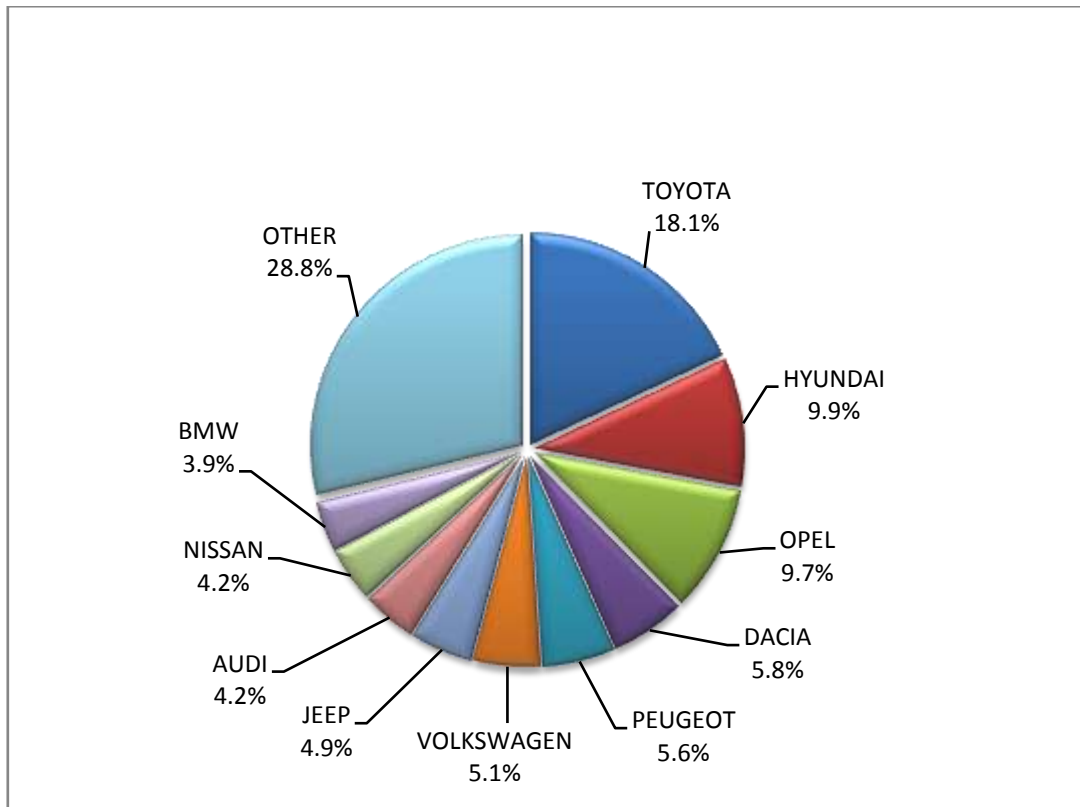
**Table 3 (cont)**  
**Sales of new and used passenger cars by make: January 2022**

Make	Passenger cars	
	January	
	new	used
SAAB	-	2
SEAT	37	67
SKODA	196	114
SMART	10	183
SSANGYONG	-	1
SUBARU	6	8
SUZUKI	171	171
TESLA	-	4
TOYOTA	997	656
VOLKSWAGEN	282	339
VOLVO	94	18
WEINSBERG	-	2
<b>TOTAL</b>	<b>5,522</b>	<b>6,455</b>

1 : With 2nd/3rd stage manufacturer in Greece.

2 : With 2nd/3rd stage manufacturer abroad.

**Graph 6. Sales of new passenger cars by make ( January 2022)**



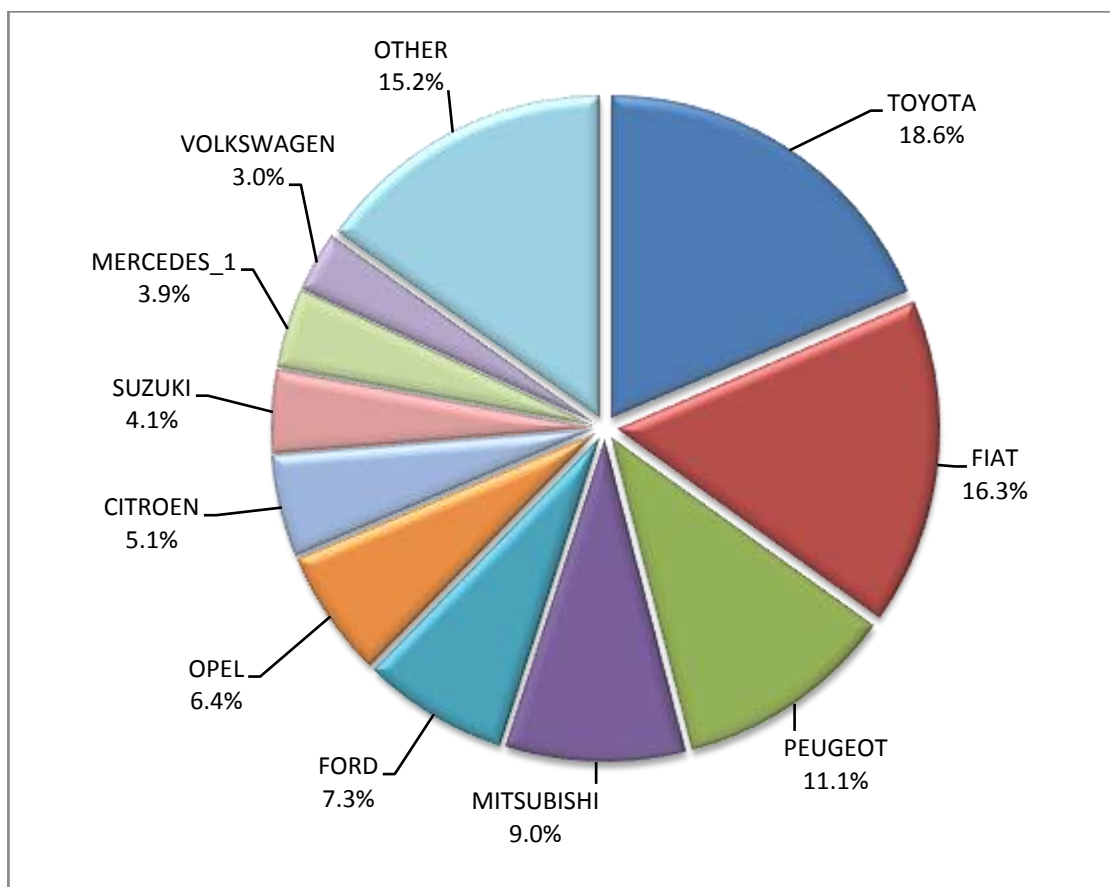
**Table 4**  
**Sales of new and used lorries by make: January 2022**

Make	Lorries	
	January	
	new	used
CITROEN	27	42
DACIA	-	5
DAF	-	44
DAF <sup>1</sup>	3	-
DODGE	-	2
FCA US LLC	-	1
FIAT	87	120
FIAT-IVECO	-	1
FORD	39	166
FORD <sup>1</sup>	3	-
ISUZU	7	13
ISUZU <sup>1</sup>	1	-
IVECO	-	23
JEEP	14	1
LAND ROVER	1	-
LEVC	2	-
MAN	-	106
MAN <sup>1</sup>	-	1
MAZDA	-	2
MERCEDES	9	317
MERCEDES <sup>1</sup>	21	2
MERCEDES <sup>2</sup>	1	-
MITSUBISHI	48	34
MITSUBISHI <sup>1</sup>	6	-
NISSAN	6	50
OPEL	34	47
PEUGEOT	59	53
PIAGGIO	1	1
PIAGGIO <sup>1</sup>	2	-
POLARIS	1	-
RENAULT	12	110
SCANIA	-	90
SKODA	-	4
SSANGYONG	-	2
SUZUKI	22	-
TERBERG	-	1
TOYOTA	99	35
VOLKSWAGEN	16	65
VOLVO	11	126
VOLVO <sup>1</sup>	1	1
<b>TOTAL</b>	<b>533</b>	<b>1,465</b>

1 : With 2nd/3rd stage manufacturer in Greece.

2 : With 2nd/3rd stage manufacturer abroad.

**Graph 7. Sales of new lorries by make (January 2022)**



**Table 5  
Sales of new and used buses by make: January 2022**

Make	Buses	
	January	
	new	used
BOVA	-	4
EVOBUS	-	2
FORD	1	2
HEULIEZ BUS	-	1
MAN	-	6
MERCEDES	-	45
MERCEDES <sup>2</sup>	1	-
NEOPLAN	-	1
SETRA	-	5
TEMSA	-	1
<b>TOTAL</b>	<b>2</b>	<b>67</b>

1 : With 2nd/3rd stage manufacturer in Greece.

2 : With 2nd/3rd stage manufacturer abroad.



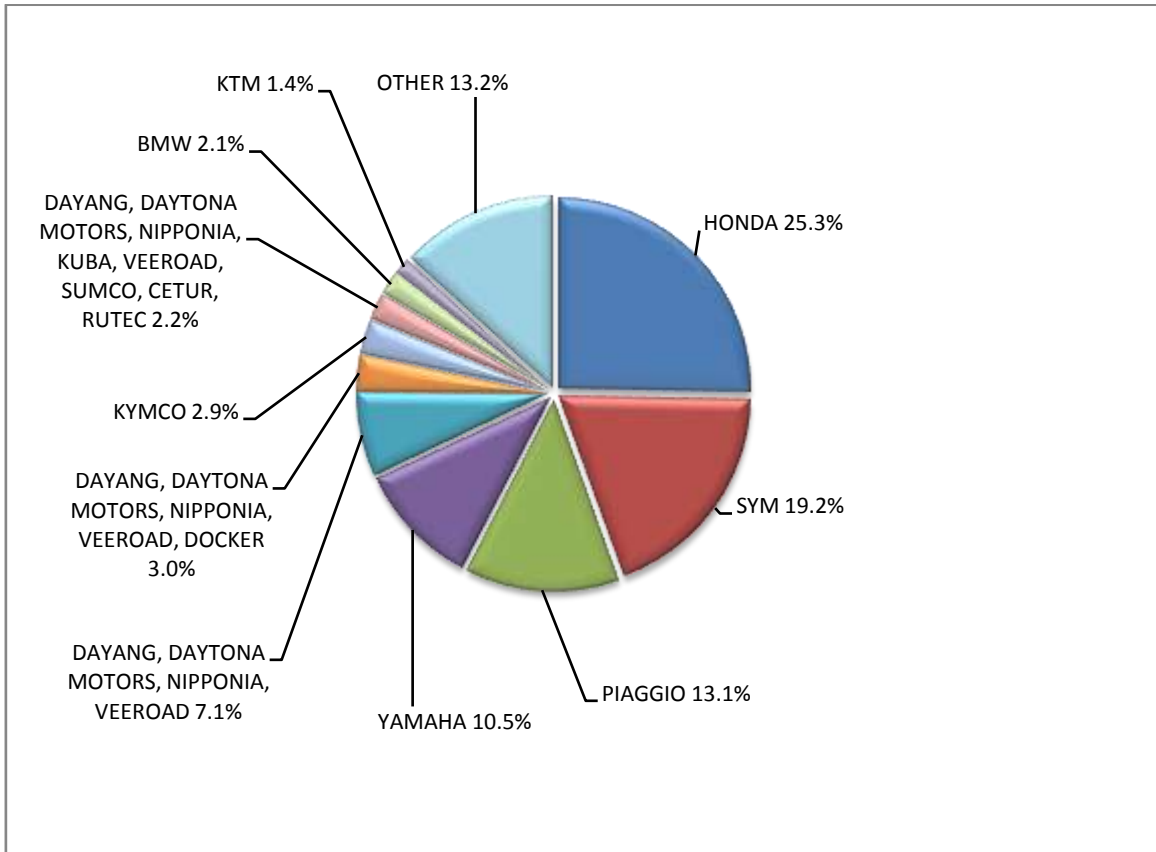
**Table 6**  
**Sales of new and used motorcycles by make or manufacturer: January 2022**

Make	Motorcycles	
	January	
	new	used
APRILIA	9	1
BAJAJ	1	-
BASHAN, AMGroup, AMGroup Bike, DON, RBIS, WORKER BEAR, Nomik ATV 2, APACHI, ISILDAR	2	-
BENELLI	11	-
BETA	10	2
BMW	44	21
BRIXTON	13	-
CFMOTO	25	1
DAYANG, DAYTONA MOTORS, NIPPONIA, DOCKER, WAYEL, SUMCO, VEEROAD, CETUR, RUTEC	1	-
DAYANG, DAYTONA MOTORS, NIPPONIA, KUBA, VEEROAD, SUMCO, CETUR, RUTEC	47	-
DAYANG, DAYTONA MOTORS, NIPPONIA, VEEROAD	148	-
DAYANG, DAYTONA MOTORS, NIPPONIA, VEEROAD, DOCKER	63	-
DAYANG, NIPPONIA, DAYTONA MOTORS, VEEROAD, SUMCO, DOCKER, MH MOTORCYCLES	2	-
DAYTONA	6	-
DUCATI	9	4
EFUN, ZAP	1	-
FANTIC MOTOR	1	-
FD MOTORS, FASPIDER, Daytona Motors, EVO Motors, Veeroad	1	-
GASGAS	1	-
GENERIC, EXPLORER, MALANCA, KSR Moto Austria, Motron Motorrad	4	-
HARLEY DAVIDSON	-	1
HONDA	529	49
HSUN, HISUN, APACHI, Mx, MASAI, HYTRACK, TRAPPER, PUMAREX, GEON, ASYAMOTOR, DAYTONA MOTORS, KRAL	1	-
HUSQVARNA	10	4
IANYING, TYM, XINBEN, TEYIN, RIYA,ONGYUNDA, SANBEN, ALFA, Senzo, La Souris, TCB, KENTOYA	1	-
INDIAN MOTORCYCLE	-	1
JCADI, TILGREEN, Grupo Invicta MOTOR, e-broh, FAURO	1	-
JIAYUAN	2	1
KAWASAKI	2	5
KTM	29	15
KWANG YANG	-	1
KYMCO	61	33
LAMBRETTA	1	-
LIFAN, HONLEI, QIPAI, SKYGO, GTS, PINK, Daytona MOTORS	1	-
LONCIN, KUBA, RKS, ITALIKA, VOGÉ, SUNRACE, SKY, MALAGUTI, ROCKET, SUPERBIKE, NOVELBAT, TRIDIAMOND	14	-
LONCIN,VOGE,KUBA,RKS,ITALIKA,SUNRACE,SKY,MALAGUTI,SUPERBIKE	2	-
LONGJIA, ORCAL, NECO	3	-
LONGJIA, ORCAL, TNT MOTOR, BEELINE, VGA, ITALJET, GEMINI, lexmoto, Jahanro, italo, NECO	1	-
MACBOR,RVM,COLOVE,ORCAL,DAYTONA MOTORS,ZF-KY,Lexmoto,OVER BIKES,YUKI, AJS	19	-
MELEX	1	-
MGK HM	6	-
MOTO GUZZI	6	-
MOTRON MOTORRAD	1	-
MV AGUSTA	-	1
NIU, NUUV	2	-

**Table 6 (cont)**  
**Sales of new and used motorcycles by make or manufacturer: January 2022**

Make	Motorcycles	
	January	
	new	used
PEUGEOT	1	2
PIAGGIO	275	25
QJ	-	1
QJ, QJIANG, KEEWAY, LEONE, KUBA, RKS, BENELLI, VENGO	1	-
QJ, QJIANG, KEEWAY, LEONE, KUBA, RKS, tell, VENGO	2	-
QJ, QJIANG, KEEWAY, LEONE, RKS, BENELLI, EMPIRE KEEWAY, KUBA	2	-
QJ, QJIANG, KEEWAY, LEONE, tell, KUBA, RKS, BENELLI, VENGO	1	-
ROYAL ENFIELD	12	-
Royalloy, Royal Alloy, RA	1	-
SAKURA, GOLDEN LION, ARTISAN, Fauro, ETALIAN, Viverra, Varaneo, Kito, E-mio	1	-
SEGWAY	1	-
SHANYANG, ATLAS PANTHER, YAMAZUKI MOTO, MOTORKING, Hirlee, XB	5	-
SHARE'NGO ,ZHIDOU,ZD	1	-
SHENGWO NEW ENERGY, YUKI	11	-
SILENCE, SCUTUM, ETRIX	1	-
SKYTEAM, SACIN, CSR, METALCO, SOKUDO, BAZUKA, MINICO, MOTOSBASI, MOTOS BORDOY, SUMKO, ROXON, MONKEY BIKES	2	1
SUZUKI	15	17
SYM	401	9
TARO, JUNAK, BARTON MOTORS ,ORCAL, Lexmoto	3	-
TARO, JUNAK, BARTON MOTORS, ORCAL, Lexmoto, MITT, NECO, WOTTAN, MAGPOWER, ADAMOTO, MAXON, MAX-ON	1	-
TAYO, HAOJIANG, ZHONGYU, THUMP, THUMPSTAR, KIDEN, ZONTES, Junak, SENKE, TANNY, TYAN, ROMET	7	-
TAYO, HAOJIANG, ZHONGYU, THUMP, THUMPSTAR, KIDEN, ZONTES, Junak, SENKE, TANNY, TYAN, ROMET, ROMET MOTORS	20	-
TRIUMPH	8	-
VOLTA, VTA, REVOLT	1	-
WONJAN, SAMADA	1	-
XINRI, SUNRA ,APACHI, ISILDAR, ISILDAR APACHI, Wayscral, KRAL	1	-
YAMAHA	219	44
YINGANG, BENYI, ROMET MOTORS, YUKI, ROUTER, MOTORAN, DAYTONA MOTORS, M1NSK, HAMACHI, KUBA, MONDIAL	2	-
ZHONGNENG, ZNEN, AGM, AJS, YUKI, COLIBRI	1	-
ZONGSHEN, ZIP STAR, Lexmoto, ICONE, VORTEX, M1NSK, MACBOR, MONDIAL, ROMET MOTORS	2	-
ZONGSHEN, ZIP STAR, Lexmoto, ICONE, VORTEX, M1NSK, MACBOR, MONDIAL, ROMET MOTORS ,SINNIS, SPARKSTER, OVER BIKES	1	-
<b>TOTAL</b>	<b>2,092</b>	<b>239</b>

**Graph 8. Sales of new motorcycles (January 2022)**



## EXPLANATORY NOTES

<b>Survey on the issuing of new road motor vehicle circulation licenses</b>	The survey on the issuing of new motor vehicle circulation licenses is a census survey. The released data give information, at country level, on the brand and type of the motor vehicle, as well as whether it is new or used. The survey does not include vehicles that move on rails, trolley busses, agricultural tractors and machinery. In addition, the following are excluded: all motor vehicles of the Armed Forces, Police, Fire Brigade, State Services, Diplomatic Corps, Foreign Missions, and Invalids of Wars, as well as motorcycles with a cylinder capacity less than 50 cc.
<b>Legal basis</b>	Law 3832/2010
<b>Reference Period</b>	January 2022
<b>Coverage</b>	The production of monthly data is based on the registers held by the Ministry of Infrastructure, Transport and Networks, which records all the monthly changes observed in the vehicle registration licenses at country level.
<b>Definitions</b>	<p><b>Road motor vehicle</b> is any vehicle that, irrespective of the number of wheels, is moved by an engine and is designed to transport persons or cargo or both of them, either they are on the same single vehicle or on a trailer carried by the main motor vehicle.</p> <p><b>New</b> road motor vehicle is any motor vehicle that is registered for the first time in Greece during the reference month and has not been put into circulation in any other country.</p> <p><b>Used</b> motor vehicle is any motor vehicle that is registered for the first time in Greece and has been imported as a used one from abroad</p> <p><b>Passenger motor vehicle:</b> it is a motor vehicle designed to carry mostly people, having no more than 9 seats, including the driver's seat.</p> <p><b>Bus:</b> it is a motor vehicle, which is designed to carry mostly people, having more than 10 seats, including the driver's seat. In the corresponding tables of this Press Release, this category also includes articulated buses.</p> <p><b>Lorry:</b> it is motor vehicle designed to carry mostly cargo. In the corresponding tables of this Press Release, this category also includes tractors, tow trucks, articulated tractors, and trucks with trailers.</p> <p><b>Motorcycle:</b> any two-wheeled motor vehicle, with or without sidecar, with maximum authorized design speed over 45 km/h, or in case it is powered by a combustion engine, with a cylinder capacity of 50 cc or over. In the corresponding tables of this Press Release, this category also includes the three-wheeled motor vehicles – motor tricycles.</p> <p><b>Tricycle motor vehicle:</b> it is a motor vehicle with three symmetrical wheels with maximum authorized design speed over 45 km/h, or in case it is powered by a combustion engine, with a cylinder capacity over the 50 cc. This category also includes four-wheel vehicles, except the light four-wheel motorcycles, whose empty vehicle tare (excluding the weight of the fuel or mixture of fuel-oil or the weight of the batteries for electric cars) is up to 400 kg in the case the vehicle is designed for passenger use or up to 550 kg in case the vehicle is designed to carry cargo and whose engine is up to 15KW.</p>
<b>Methodology</b>	Exhaustive Survey. The primary data derive from the Ministry of Infrastructure, Transport and Networks and are based on the issuing of new circulation licenses as they are registered by the Regional Offices for Transport and Communications.
<b>References</b>	More information (graphs, tables) concerning the survey on the issuing of new motor vehicle circulation licenses are available on the webpage of ELSTAT, <a href="http://www.statistics.gr">www.statistics.gr</a> , under the link <a href="http://www.statistics.gr/en/statistics/-/publication/SME24/">http://www.statistics.gr/en/statistics/-/publication/SME24/</a>