



**SHORT-TERM INDICES OF EMPLOYMENT
(PERSONS EMPLOYED, HOURS WORKED, GROSS WAGES AND SALARIES)
IN MAIN SECTIONS OF THE ECONOMY¹
1st Quarter 2026 (Provisional Data)**

The Hellenic Statistical Authority (ELSTAT) announces data on Short-term Indices of Employment (Persons Employed, Hours Worked and Gross Wages and Salaries), in the twelve main sections of the economy and in the aggregates of Industry (BTE) and Services (HTNXK) for the 1st quarter 2026 (without calendar or seasonal adjustment).

The evolution of the Short-term Indices of Employment in the 1st quarter 2026 in comparison to the corresponding indices of the 1st quarter 2025 are as follows:

NACE Rev. 2	Section of economic activity	Annual rates of change (%) (2026/2025)		
		Index of Persons Employed	Index of Hours Worked	Index of Gross Wages and Salaries
B	Mining and Quarrying	4.8	4.8	7.8
C	Manufacturing	-0.9	-0.4	-0.4
D	Electricity, Gas, Steam and Air Conditioning Supply	-2.5	-2.4	0.3
E	Water Supply, Sewerage, Waste Management and Remediation Activities	-6.1	-6.3	-4.5
BTE	Mining and Quarrying, Manufacturing, Electricity Supply and Water Supply (Total Industry)	-1.0	-0.6	-0.2
F	Construction	0.5	1.5	7.7
G	Wholesale and Retail Trade, Repair of Motor Vehicles and Motorcycles	-1.3	-0.8	-0.7
H	Transportation and Storage	-1.7	-2.0	-6.9
I	Accommodation and Food Service Activities	-4.1	-0.9	8.4
J	Information and Communication	2.1	3.9	4.3
L	Real estate activities	-6.6	-4.0	2.5
M	Professional, Scientific and Technical Activities	0.9	1.3	2.4
N	Administrative and Support Service Activities	-3.2	-2.0	-0.2
HTNXK	Transportation and Storage, Accommodation and Food Service Activities, Information and Communication, Professional, Scientific and Technical Activities, Administrative and Support Service Activities (Total Services)	-2.3	-0.6	1.6

Information on methodological issues:

Business Statistics Division
Section of Manufacture-Construction Indices and Industrial Products
Head of the Section: Evidiki Vlachokosta
Section of Trade and Services Indices
Head of the Section: Thomas Konstantinos
Tel: +30 213 135 2056, 2048

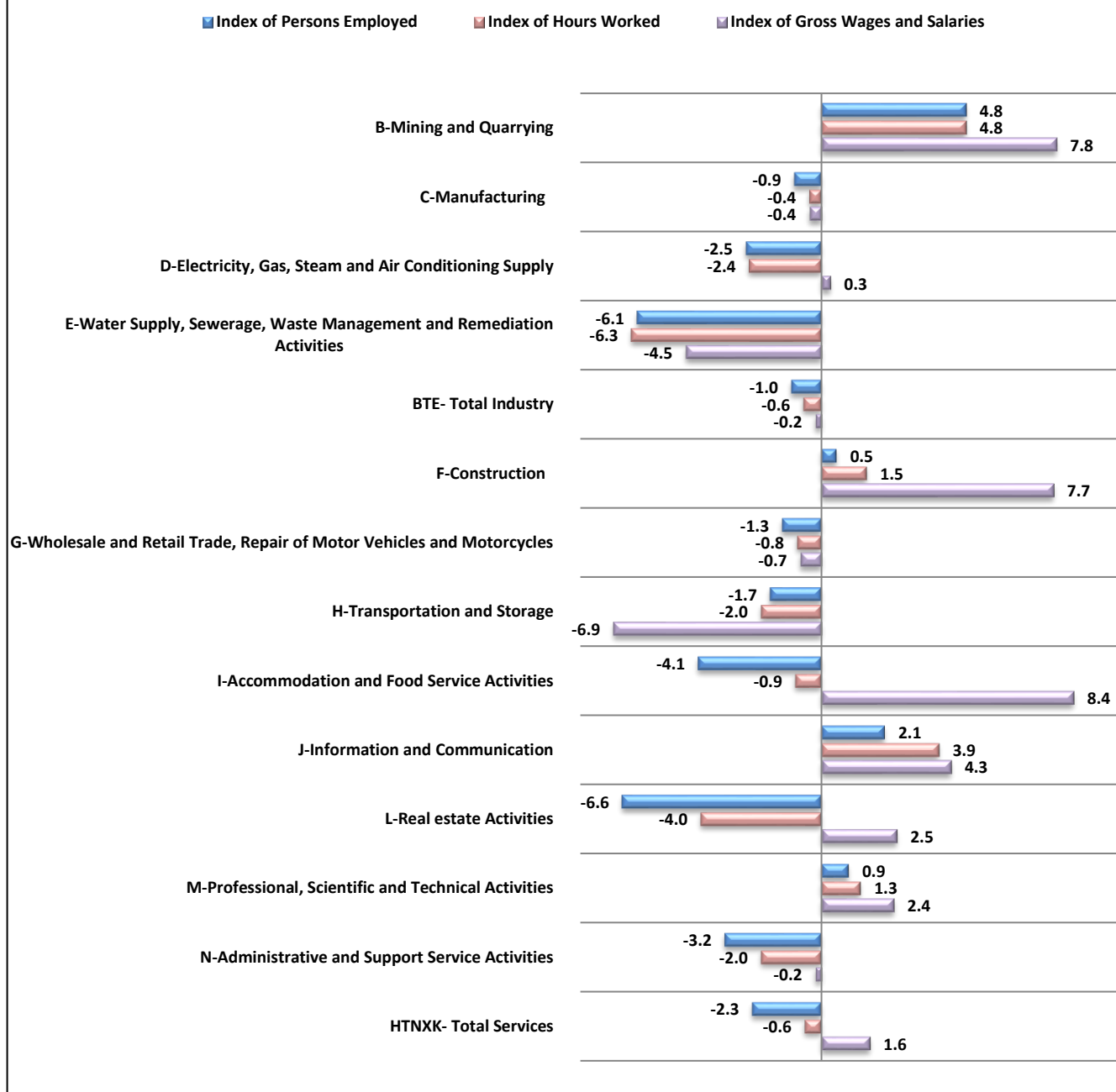
E-mail: e.vlachokosta@statistics.gr, k.thomas@statistics.gr

Information on data provision:

Tel: +30 213 135 2022, 2308, 2310
E-mail: data.dissem@statistics.gr

¹ It refers to twelve main sections of the statistical classification of economic activities NACE Rev. 2 of EU and to the aggregates of BTE as Total Industry B to E (Mining and Quarrying, Manufacturing, Electricity Supply and Water Supply) and HTNXK as Total Services H to N (except sector K and M701, M72 and M75).

Graph 1. Annual rates of change (%) (1st quarter 2026/2025)



In the following table, the Short-term Indices of Persons Employed, Hours Worked and Gross Wages and Salaries (without calendar or seasonal adjustment) are presented broken down in the twelve main sections of the NACE Rev. 2 statistical classification of economic activities and in the aggregates of BTE as Total Industry sections B to E (Mining and Quarrying, Manufacturing, Electricity Supply and Water Supply) and HTNXK as Total Services sections H to N (except section K and M701, M72 and M75), along with the annual and quarterly rates of change of each index, for the years 2024 (1st quarter) - 2026 (1st quarter).

The indices are available on the ELSTAT's website: <https://www.statistics.gr/en/statistics/-/publication/DKT03/>

In Graphs 2 to 4 that follow, the evolution over time of the Indices of Persons Employed, Hours Worked and Gross Wages and Salaries by NACE Rev. 2 classification, for the years 2022 – 2026 (1st quarter) is shown.

Table: Short-term Indices of Persons Employed, Hours Worked and Gross Wages and Salaries, annual and quarterly rates of change in main sections of economy, period: 1st quarter 2024 – 1st quarter 2026

(without calendar or seasonal adjustment)

Base year: 2021 = 100.0

Year, quarter		Index of Persons Employed			Index of Hours Worked			Index of Gross Wages and Salaries		
		Index	Annual rates of change (%)	Quarterly rates of change (%)	Index	Annual rates of change (%)	Quarterly rates of change (%)	Index	Annual rates of change (%)	Quarterly rates of change (%)
Section B – Mining and Quarrying										
2024	Q1	99.3	5.2	-0.8	109.5	5.1	-1.2	100.0	10.5	3.2
	Q2	100.1	3.4	0.8	110.3	3.0	0.7	138.7	8.2	38.7
	Q3	100.5	2.5	0.4	110.8	1.8	0.5	127.0	13.4	-8.5
	Q4	101.9	1.9	1.4	112.4	1.4	1.4	139.4	43.9	9.8
Annual average		100.4	3.3		110.8	2.8		126.3	19.0	
2025*	Q1	101.2	2.0	-0.7	111.8	2.1	-0.5	125.5	25.5	-9.9
	Q2	105.2	5.2	3.9	116.3	5.4	3.9	150.2	8.3	19.6
	Q3	106.0	5.5	0.8	117.2	5.8	0.8	133.6	5.2	-11.1
	Q4	108.5	6.5	2.4	119.8	6.5	2.2	158.7	13.8	18.8
Annual average		105.3	4.8		116.3	5.0		142.0	13.2	
2026	Q1	106.1	4.8	-2.3	117.2	4.8	-2.2	135.3	7.8	-14.7
Section C - Manufacturing										
2024	Q1	106.0	0.6	-2.8	109.7	1.1	-2.7	102.3	11.0	-2.9
	Q2	108.8	1.5	2.6	112.8	2.0	2.8	129.3	9.3	26.4
	Q3	110.6	0.6	1.7	115.2	1.4	2.2	123.2	8.3	-4.7
	Q4	109.0	0.0	-1.4	113.7	0.8	-1.3	120.8	14.7	-1.9
Annual average		108.6	0.7		112.9	1.3		118.9	10.8	
2025*	Q1	106.9	0.9	-1.9	111.6	1.7	-1.9	112.8	10.3	-6.7
	Q2	109.4	0.5	2.3	114.1	1.2	2.3	139.7	8.1	23.9
	Q3	111.9	1.1	2.3	117.0	1.5	2.5	132.5	7.6	-5.1
	Q4	111.3	2.1	-0.5	116.5	2.4	-0.4	127.2	5.2	-4.0
Annual average		109.9	1.2		114.8	1.7		128.0	7.8	
2026	Q1	106.0	-0.9	-4.8	111.1	-0.4	-4.6	112.4	-0.4	-11.6
Section D - Electricity, Gas, Steam and Air Conditioning Supply										
2024	Q1	92.6	-5.1	-5.8	99.7	-5.3	-5.8	89.5	24.1	3.4
	Q2	93.6	-2.7	1.1	100.8	-2.9	1.0	103.5	-1.7	15.7
	Q3	93.7	-3.8	0.1	100.9	-4.0	0.1	95.6	2.7	-7.7
	Q4	94.2	-4.2	0.5	101.4	-4.3	0.6	92.0	6.3	-3.8
Annual average		93.5	-3.9		100.7	-4.1		95.1	7.9	
2025*	Q1	93.1	0.5	-1.2	100.3	0.6	-1.1	96.3	7.7	4.8
	Q2	93.1	-0.5	0.1	100.4	-0.4	0.1	126.3	22.0	31.1
	Q3	92.8	-0.9	-0.3	100.0	-0.8	-0.4	103.9	8.7	-17.7
	Q4	93.7	-0.5	0.9	101.1	-0.3	1.1	106.7	16.0	2.7
Annual average		93.2	-0.4		100.5	-0.2		108.3	13.6	
2026	Q1	90.7	-2.5	-3.1	98.0	-2.4	-3.1	96.6	0.3	-9.4

Table: Short-term Indices of Persons Employed, Hours Worked and Gross Wages and Salaries, annual and quarterly rates of change in main sections of economy, period: 1st quarter 2024 – 1st quarter 2026 (continued)

(without calendar or seasonal adjustment)

Base year: 2021 = 100.0

Year, quarter		Index of Persons Employed			Index of Hours Worked			Index of Gross Wages and Salaries		
		Index	Annual rates of change (%)	Quarterly rates of change (%)	Index	Annual rates of change (%)	Quarterly rates of change (%)	Index	Annual rates of change (%)	Quarterly rates of change (%)
Section E - Water Supply, Sewerage, Waste Management and Remediation Activities										
2024	Q1	92.8	-6.8	-3.9	95.0	-6.4	-3.4	97.1	-1.8	-0.8
	Q2	97.3	-6.6	4.9	99.3	-6.4	4.6	105.5	3.1	8.6
	Q3	96.6	-6.5	-0.7	97.9	-6.4	-1.4	105.9	4.4	0.4
	Q4	94.7	-1.9	-2.0	96.6	-1.8	-1.4	105.4	7.7	-0.5
Annual average		95.3	-5.4		97.2	-5.3		103.5	3.4	
2025*	Q1	92.4	-0.4	-2.4	94.6	-0.4	-2.0	100.6	3.6	-4.5
	Q2	96.3	-1.0	4.2	98.3	-1.0	3.9	103.8	-1.6	3.1
	Q3	95.6	-1.0	-0.7	97.1	-0.9	-1.2	107.1	1.1	3.2
	Q4	91.2	-3.7	-4.6	93.0	-3.6	-4.2	102.1	-3.1	-4.7
Annual average		93.9	-1.5		95.8	-1.5		103.4	0.0	
2026	Q1	86.8	-6.1	-4.9	88.7	-6.3	-4.7	96.1	-4.5	-5.9
BTE – Total Industry										
2024	Q1	104.7	0.1	-3.0	108.7	0.5	-2.9	100.6	12.1	-2.0
	Q2	107.3	1.1	2.5	111.5	1.5	2.6	125.6	7.7	24.8
	Q3	108.9	0.2	1.5	113.6	0.9	1.9	119.2	7.6	-5.0
	Q4	107.5	-0.3	-1.3	112.4	0.4	-1.1	117.1	14.1	-1.8
Annual average		107.1	0.3		111.5	0.8		115.6	10.4	
2025*	Q1	105.6	0.8	-1.9	110.4	1.6	-1.8	110.8	10.1	-5.4
	Q2	107.9	0.5	2.2	112.8	1.1	2.2	137.4	9.5	24.1
	Q3	110.1	1.0	2.0	115.2	1.4	2.2	128.2	7.5	-6.7
	Q4	109.6	1.9	-0.4	114.9	2.2	-0.3	124.7	6.4	-2.8
Annual average		108.3	1.1		113.3	1.6		125.3	8.4	
2026	Q1	104.5	-1.0	-4.6	109.7	-0.6	-4.5	110.6	-0.2	-11.3
Section F – Construction										
2024	Q1	103.5	0.7	-4.8	100.7	1.9	-4.3	106.5	15.5	-7.2
	Q2	113.4	2.9	9.5	111.4	4.4	10.6	140.2	16.1	31.6
	Q3	118.2	3.8	4.2	116.1	5.7	4.3	142.4	15.6	1.6
	Q4	111.8	2.8	-5.4	109.2	3.8	-6.0	136.3	18.8	-4.2
Annual average		111.7	2.5		109.3	3.9		131.3	16.5	
2025*	Q1	107.5	3.8	-3.9	104.8	4.0	-4.1	120.3	13.0	-11.8
	Q2	117.1	3.3	9.0	115.5	3.7	10.3	157.4	12.3	30.8
	Q3	120.3	1.8	2.7	119.1	2.5	3.1	157.0	10.3	-0.3
	Q4	115.3	3.1	-4.2	113.1	3.5	-5.0	145.7	6.9	-7.2
Annual average		115.0	3.0		113.1	3.5		145.1	10.6	
2026	Q1	108.0	0.5	-6.4	106.4	1.5	-5.9	129.6	7.7	-11.1

Table: Short-term Indices of Persons Employed, Hours Worked and Gross Wages and Salaries, annual and quarterly rates of change in main sections of economy, period: 1st quarter 2024 – 1st quarter 2026 (continued)

(without calendar or seasonal adjustment)

Base year: 2021 = 100.0

Year, quarter		Index of Persons Employed			Index of Hours Worked			Index of Gross Wages and Salaries		
		Index	Annual rates of change (%)	Quarterly rates of change (%)	Index	Annual rates of change (%)	Quarterly rates of change (%)	Index	Annual rates of change (%)	Quarterly rates of change (%)
Section G – Wholesale and Retail Trade, Repair of Motor Vehicles and Motorcycles										
2024	Q1	107.6	0.1	-2.8	107.2	1.0	-2.5	101.7	8.9	-3.9
	Q2	111.3	1.8	3.5	111.3	2.7	3.8	127.3	10.4	25.1
	Q3	112.5	1.1	1.1	113.1	2.2	1.6	119.8	8.9	-5.9
	Q4	112.4	1.6	-0.1	112.8	2.6	-0.2	119.3	12.8	-0.4
<i>Annual average</i>		110.9	1.2		111.1	2.1		117.0	10.2	
2025*	Q1	109.8	2.1	-2.3	110.2	2.8	-2.3	113.4	11.5	-5.0
	Q2	113.5	2.0	3.4	114.6	3.0	4.0	139.7	9.8	23.2
	Q3	114.7	2.0	1.1	116.1	2.7	1.4	130.1	8.6	-6.9
	Q4	115.4	2.7	0.6	116.1	2.9	0.0	131.7	10.3	1.2
<i>Annual average</i>		113.4	2.2		114.2	2.8		128.7	10.0	
2026	Q1	108.4	-1.3	-6.1	109.3	-0.8	-5.8	112.6	-0.7	-14.5
Section H – Transportation and Storage										
2024	Q1	105.3	0.9	-2.7	105.2	1.5	-2.5	104.5	7.5	-5.0
	Q2	109.8	2.0	4.2	109.3	2.2	3.9	130.1	9.1	24.5
	Q3	110.7	1.8	0.8	110.3	2.2	0.9	121.6	7.9	-6.5
	Q4	108.6	0.3	-1.9	108.4	0.5	-1.7	128.1	16.3	5.3
<i>Annual average</i>		108.6	1.2		108.3	1.6		121.1	10.2	
2025*	Q1	105.4	0.0	-3.0	105.0	-0.2	-3.1	116.2	11.2	-9.2
	Q2	109.8	0.0	4.2	109.2	-0.1	4.0	142.5	9.5	22.6
	Q3	109.2	-1.3	-0.5	109.1	-1.1	-0.1	130.4	7.3	-8.5
	Q4	109.8	1.1	0.5	109.7	1.2	0.6	141.2	10.2	8.2
<i>Annual average</i>		108.6	0.0		108.3	0.0		132.6	9.5	
2026	Q1	103.6	-1.7	-5.6	102.9	-2.0	-6.2	108.2	-6.9	-23.3
Section I - Accommodation and Food Service Activities										
2024	Q1	85.1	-9.1	-16.4	93.0	-6.5	-21.7	101.6	13.3	-30.1
	Q2	114.2	-5.6	34.2	145.7	-5.3	56.6	182.4	8.3	79.5
	Q3	123.1	-5.9	7.7	165.5	-5.8	13.6	223.5	6.0	22.5
	Q4	96.3	-5.4	-21.8	112.7	-5.1	-31.9	162.0	11.4	-27.5
<i>Annual average</i>		104.7	-6.5		129.2	-5.7		167.4	9.7	
2025*	Q1	83.0	-2.5	-13.8	91.5	-1.6	-18.8	108.7	7.0	-32.9
	Q2	105.6	-7.5	27.3	136.7	-6.2	49.4	191.9	5.2	76.5
	Q3	114.6	-6.9	8.5	157.2	-5.0	15.0	230.9	3.3	20.4
	Q4	95.5	-0.8	-16.7	112.6	-0.1	-28.4	161.9	-0.1	-29.9
<i>Annual average</i>		99.7	-4.4		124.5	-3.2		173.3	3.8	
2026	Q1	79.6	-4.1	-16.7	90.8	-0.9	-19.4	117.8	8.4	-27.2

Table: Short-term Indices of Persons Employed, Hours Worked and Gross Wages and Salaries, annual and quarterly rates of change in main sections of economy, period: 1st quarter 2024 – 1st quarter 2026 (continued)

(without calendar or seasonal adjustment)

Base year: 2021 = 100.0

Year, quarter		Index of Persons Employed			Index of Hours Worked			Index of Gross Wages and Salaries		
		Index	Annual rates of change (%)	Quarterly rates of change (%)	Index	Annual rates of change (%)	Quarterly rates of change (%)	Index	Annual rates of change (%)	Quarterly rates of change (%)
Section J - Information and Communication										
2024	Q1	106.8	-2.5	-4.2	111.7	-1.9	-4.3	111.8	11.1	0.8
	Q2	110.7	0.5	3.6	115.0	0.1	3.0	148.4	12.9	32.7
	Q3	111.4	2.1	0.7	116.2	1.9	1.0	136.7	8.5	-7.8
	Q4	114.9	3.0	3.1	119.8	2.7	3.1	129.4	16.6	-5.4
Annual average		110.9	0.8		115.7	0.7		131.6	12.3	
2025*	Q1	110.9	3.9	-3.4	115.7	3.5	-3.5	125.7	12.4	-2.8
	Q2	112.7	1.8	1.6	117.9	2.5	1.9	157.9	6.4	25.6
	Q3	114.3	2.5	1.4	119.1	2.5	1.0	147.6	8.0	-6.5
	Q4	117.7	2.5	3.0	123.4	3.0	3.6	138.3	6.9	-6.3
Annual average		113.9	2.7		119.0	2.9		142.4	8.4	
2026	Q1	113.3	2.1	-3.8	120.2	3.9	-2.6	131.1	4.3	-5.2
Section L - Real estate Activities										
2024	Q1	82.5	-7.1	-12.8	87.8	-5.2	-12.4	82.6	-4.1	-14.5
	Q2	97.1	-4.2	17.8	105.1	-3.3	19.8	118.4	-0.1	43.4
	Q3	97.6	-7.3	0.5	106.9	-6.0	1.7	117.1	0.1	-1.0
	Q4	87.8	-7.0	-10.0	94.2	-6.0	-11.9	120.6	24.8	3.0
Annual average		91.2	-6.4		98.5	-5.1		109.7	5.2	
2025*	Q1	82.9	0.5	-5.7	87.9	0.1	-6.7	87.3	5.7	-27.6
	Q2	95.8	-1.3	15.6	105.1	-0.1	19.5	120.4	1.7	38.0
	Q3	96.6	-1.0	0.9	107.0	0.1	1.9	118.5	1.2	-1.6
	Q4	89.3	1.6	-7.6	97.9	4.0	-8.5	125.7	4.3	6.1
Annual average		91.1	0.0		99.5	1.1		113.0	3.2	
2026	Q1	77.4	-6.6	-13.3	84.4	-4.0	-13.8	89.4	2.5	-28.9
Section M - Professional, Scientific and Technical Activities										
2024	Q1	123.9	2.2	-2.0	126.7	2.9	-1.9	122.6	11.4	-4.5
	Q2	131.2	4.9	6.0	133.9	5.1	5.6	157.4	11.6	28.5
	Q3	133.3	5.1	1.6	136.3	5.1	1.8	151.8	12.3	-3.6
	Q4	132.6	4.9	-0.5	135.8	5.2	-0.4	147.8	15.2	-2.6
Annual average		130.2	4.3		133.2	4.5		144.9	12.6	
2025*	Q1	127.7	3.1	-3.7	130.8	3.2	-3.7	137.5	12.2	-7.0
	Q2	132.5	1.0	3.7	136.0	1.6	4.0	171.7	9.1	24.9
	Q3	134.0	0.5	1.1	138.0	1.2	1.4	161.1	6.2	-6.2
	Q4	136.1	2.7	1.6	139.6	2.8	1.2	156.1	5.6	-3.1
Annual average		132.6	1.8		136.1	2.2		156.6	8.3	
2026	Q1	128.9	0.9	-5.3	132.5	1.3	-5.1	140.7	2.4	-9.9

Table: Short-term Indices of Persons Employed, Hours Worked and Gross Wages and Salaries, annual and quarterly rates of change in main sections of economy, period: 1st quarter 2024 – 1st quarter 2026 (continued)

(without calendar or seasonal adjustment)

Base year: 2021 = 100.0

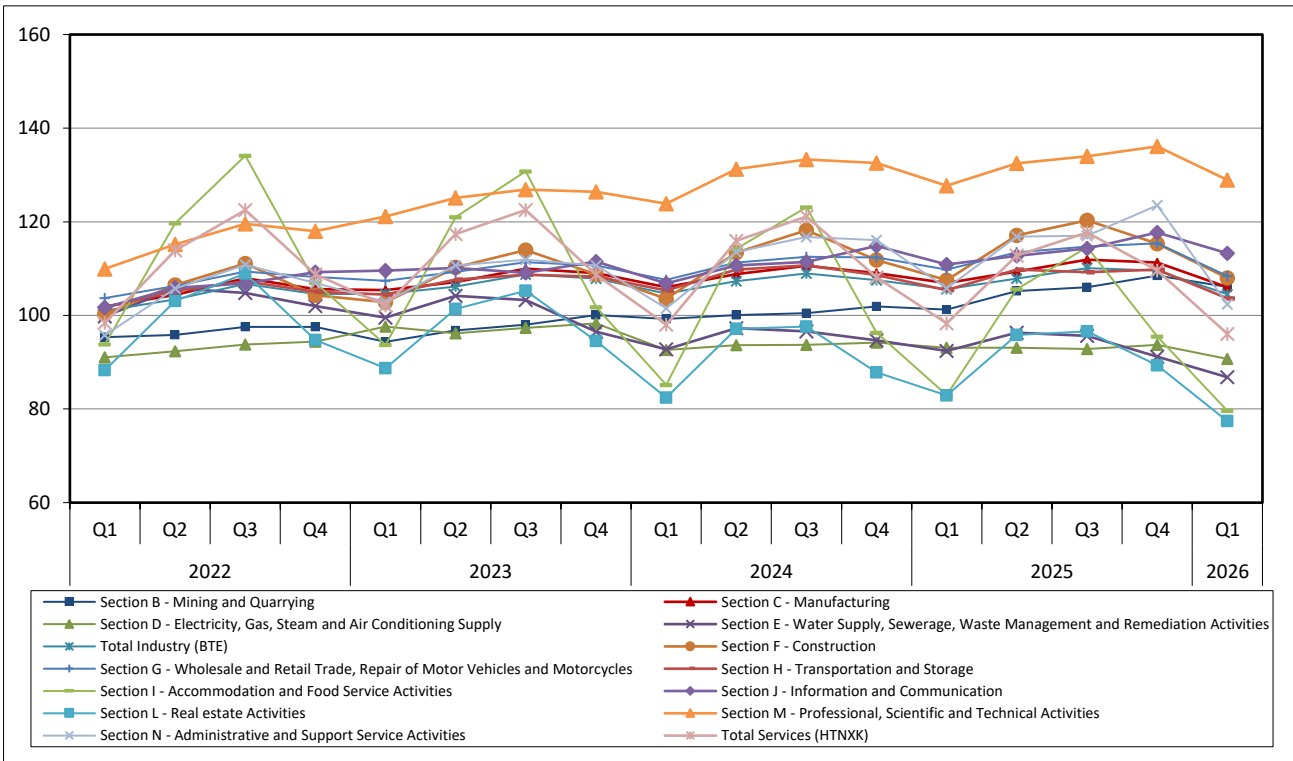
Year, quarter		Index of Persons Employed			Index of Hours Worked			Index of Gross Wages and Salaries		
		Index	Annual rates of change (%)	Quarterly rates of change (%)	Index	Annual rates of change (%)	Quarterly rates of change (%)	Index	Annual rates of change (%)	Quarterly rates of change (%)
Section N - Administrative and Support Service Activities										
2024	Q1	101.5	-1.3	-8.3	107.7	-1.6	-8.9	107.2	7.4	-11.0
	Q2	113.5	2.6	11.8	120.3	1.8	11.6	140.9	10.3	31.4
	Q3	116.8	4.3	2.9	125.1	3.3	4.0	140.7	9.5	-0.1
	Q4	116.1	4.9	-0.6	123.5	4.4	-1.3	137.6	14.2	-2.2
Annual average		112.0	2.6		119.1	2.0		131.6	10.3	
2025*	Q1	105.8	4.2	-8.8	111.6	3.6	-9.6	117.5	9.6	-14.6
	Q2	116.8	2.8	10.3	123.1	2.4	10.3	152.0	7.9	29.3
	Q3	117.0	0.2	0.2	125.3	0.2	1.8	147.3	4.7	-3.0
	Q4	123.5	6.4	5.5	130.2	5.5	3.9	153.2	11.3	4.0
Annual average		115.7	3.4		122.6	2.9		142.5	8.4	
2026	Q1	102.4	-3.2	-17.0	109.4	-2.0	-16.0	117.3	-0.2	-23.5
HTNXK - Total Services										
2024	Q1	98.0	-4.0	-9.8	108.0	-1.8	-10.3	108.9	10.0	-12.2
	Q2	115.9	-1.3	18.2	131.0	-0.4	21.3	153.3	10.3	40.8
	Q3	121.2	-1.1	4.5	139.6	-0.3	6.6	158.6	8.7	3.5
	Q4	108.2	-0.5	-10.7	120.9	0.4	-13.4	142.0	14.5	-10.5
Annual average		110.8	-1.7		124.9	-0.5		140.7	10.9	
2025*	Q1	98.3	0.3	-9.1	108.8	0.7	-10.1	119.3	9.6	-16.0
	Q2	112.8	-2.7	14.8	129.6	-1.0	19.2	163.8	6.9	37.3
	Q3	117.7	-2.9	4.3	138.1	-1.0	6.5	166.6	5.1	1.7
	Q4	109.6	1.4	-6.8	123.2	1.9	-10.8	150.1	5.7	-9.9
Annual average		109.6	-1.0		124.9	0.1		150.0	6.8	
2026	Q1	96.1	-2.3	-12.4	108.2	-0.6	-12.2	121.3	1.6	-19.2

* Revised data:

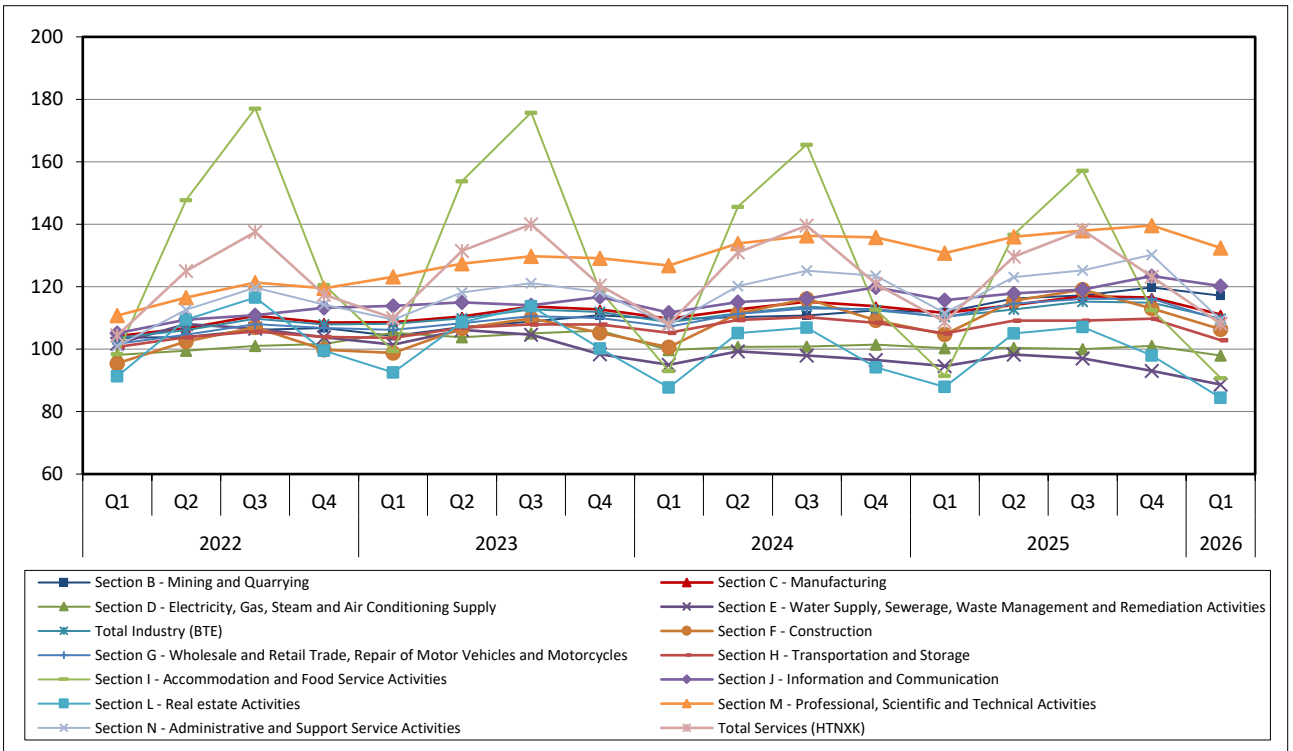
The employment indices for the quarters of 2025 were revised based on the findings of an examination conducted by the Hellenic Statistical Authority (ELSTAT) concerning cases where significant discrepancies were observed between the data from the two administrative sources (ERGANI IS and e-EFKA). Specifically, it appears that, in certain cases, the incorporation of changes in the data relating to employed persons was not temporally aligned across the two sources. Therefore, the combined use of data from both available administrative sources was deemed preferable for the compilation of the quarterly employment indices. It is noted that, for the fourth quarter of 2025, the employment indices incorporated the updated data received by ELSTAT from e-EFKA.

Note: The indices and the percentage changes are rounded up to one decimal digit when published. Any difference in the percentage changes is due to rounding.

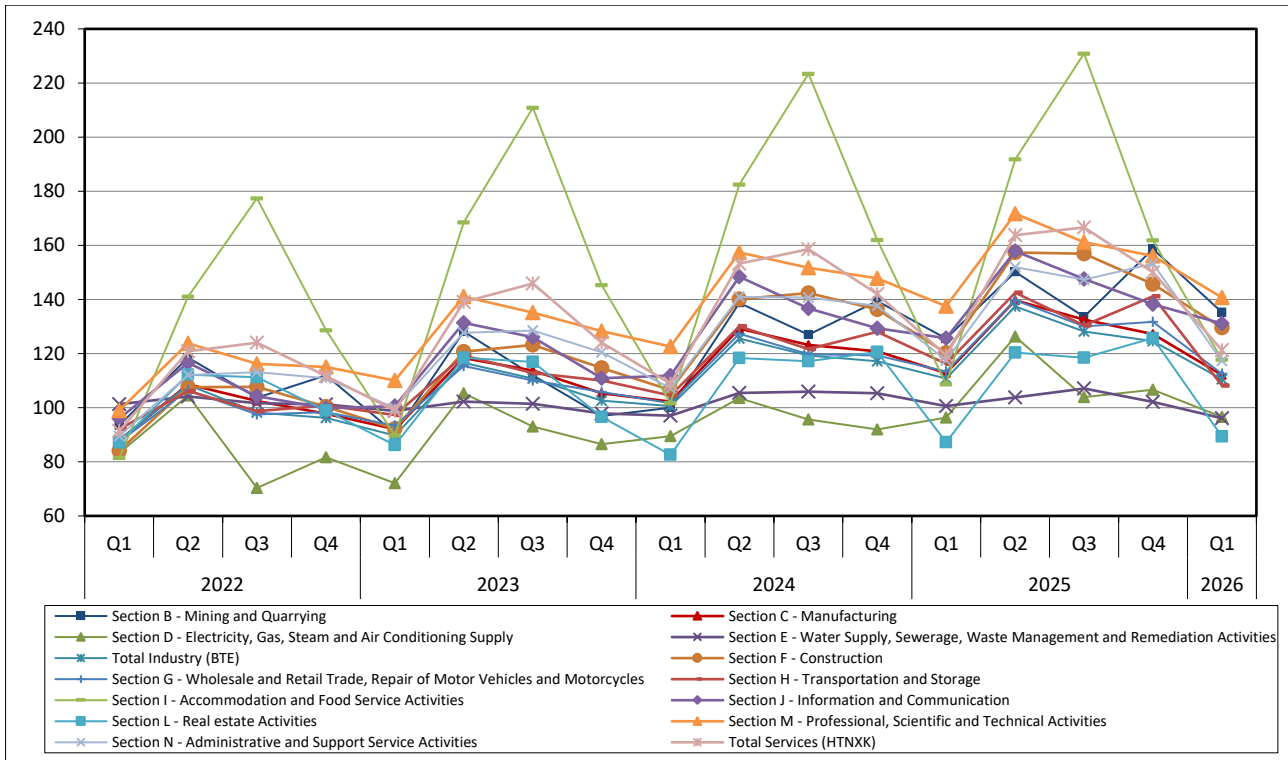
Graph 2. Evolution of the Index of Persons Employed in main sections of economy, (Base year: 2021=100.0):



Graph 3. Evolution of the Index of Hours Worked by Employees in main sections of economy, (Base year: 2021=100.0):



Graph 4. Evolution of the Index of Gross Wages and Salaries in main sections of economy, (Base year: 2021=100.0):



METHODOLOGICAL NOTES

General	The Short-term Indices of Employment (Persons Employed, Hours Worked and Gross Wages and Salaries) are quarterly indices in eleven main sections of economic activities B to E (Mining and Quarrying, Manufacturing, Electricity Supply and Water Supply), F (Construction), G (Trade), H to J, L and M (except M701, M72 and M75) to N (Services) of the statistical classification of economic activities NACE Rev. 2 of EU, with base year 2021=100.0.
Purpose of the indices	The purpose of the indices is to present the evolution of Persons Employed, Hours Worked by Employees and Gross Wages and Salaries on a quarterly basis in eleven main sections of economic activities B to E (Mining and Quarrying, Manufacturing, Electricity Supply and Water Supply), F (Construction), G (Trade), H to J,L and M (except M701, M72 and M75) to N (Services) of the statistical classification NACE Rev. 2.
Legal Framework	The Short-term Indices of Employment (Persons Employed, Hours Worked and Gross Wages and Salaries) are compiled in the framework of the implementation of Regulation (EU) No 2019/2152 of the European Parliament and of the Council on European business statistics, as well as Commission Implementing Regulation (EU) No 2020/1197 laying down technical specifications and arrangements pursuant to Regulation (EU) No 2019/2152. Finally, for the compilation of the aforementioned indices, Regulation (EC) No 1893/2006 of the European Parliament and of the Council establishing the statistical classification of economic activities NACE Rev. 2 is applied.
Geographical coverage	Greece, total.
Reference Period	Quarter.
Base year	2021=100.0.
Revision	<p>The revision of the Employment Indices with new base year (b.y.) 2021=100.0 was carried out within the framework of the implementation of Regulation (EU) 2020/1197, according to which short-term indices are revised every five (5) years, with a base year ending in 0 or 5, while due to the impact of the pandemic, the indices were announced on 13/12/2024, revised with the base year 2021. The purpose of the revision is to align the indices with the latest developments in the structure of employment in the sectors of economic activity.</p> <p>Since 2026, ELSTAT has been compiling the Employment Indices using administrative data, which are available through cooperation protocols with the Ministry of Labour and e-EFKA. The main objective is to improve the accuracy and reliability of Short-Term Employment Indices and effectively simplify the production process by creating an integrated system for the regular quarterly calculation of these indices, covering all stages of production, including data receiving and storage, processing, validation, selection of final microdata and calculation of the indices.</p> <p>The employment indices for the quarters of 2025 were revised based on the findings of an examination conducted by the Hellenic Statistical Authority (ELSTAT) concerning cases where significant discrepancies were observed between the data from the two administrative sources (ERGANI IS and e-EFKA). Specifically, it appears that, in certain cases, the incorporation of changes in the data relating to employed persons was not temporally aligned across the two sources. Therefore, the combined use of data from both available administrative sources was deemed preferable for the compilation of the quarterly employment indices. It is noted that, for the fourth quarter of 2025, the employment indices incorporated the updated data received by ELSTAT from e-EFKA.</p>
Definitions	<p>As Number of Persons Employed is defined the total number of persons employed in the enterprise, irrespectively of their status (owners, partners and their family members) and the nature of their work (managers, sales persons and auxiliary staff) and irrespectively of whether they work temporarily or seasonally, full-time or part-time employment, with or without remuneration.</p> <p>Hours Worked is defined the total number of hours actually worked in the enterprise by Employees during the reference quarter. It includes hours actually worked during regular working hours; hours worked overtime, whether paid or unpaid; hours worked during nights, Sundays or public holidays. It also includes the time which is spent at the place of work on tasks such as preparing the site and time corresponding to short periods of rest at the workplace. This variable excludes hours paid but not actually worked such as for annual leave, holidays and sickness leave.</p> <p>Wages and Salaries is defined the total remuneration, in cash or in kind, payable to all persons counted on the payroll, in return for work done.</p>

Statistical Classification The statistical classification of economic activities NACE Rev. 2 of EU is used.

Coverage of NACE Rev.2 sections of economic activity

- B Mining and Quarrying
- C Manufacturing
- D Electricity, Gas, Steam and Air Conditioning Supply
- E Water Supply, Sewerage, Waste Management and Remediation Activities
- F Construction
- G Wholesale and Retail Trade, Repair of Motor Vehicles and Motorcycles
- H Transportation and Storage
- I Accommodation and Food Service Activities
- J Information and Communication
- L Real estate Activities

M (except M701, M72 and M75) Professional, Scientific and Technical Activities

- N Administrative and Support Service Activities

Calculation of the indices The Short-term Indices of Employment are calculated by applying the chaining method. Firstly, the moving base index is calculated by comparing the estimated value (number of persons employed, hours worked, wages and salaries) for the current quarter with the corresponding value of the previous quarter. Afterwards, the fixed base index for the current quarter is calculated by multiplying the moving base index by the fixed base index of the previous quarter. The surveyed sample amounts to 7,146 enterprises. The quarterly calculations of the revised indices concern joint enterprises that have administrative data in two consecutive quarters (current and previous).

References More information on the time series of indices from 2010 Persons Employed, Hours of Work of Employees and Wages and Salaries (without calendar or seasonal adjustment), in twelve main sections of the statistical classification of economic activities NACE Rev. 2 and in the total indices of Industry (BTE) and Services (HTNXX), the Retail Trade index (div. 47) and the index excluding fuels (group 473) of the Employment Indices (as well as their methodology which is under preparation), is available on the ELSTAT's website:

<https://www.statistics.gr/en/statistics/-/publication/DKT03/>