



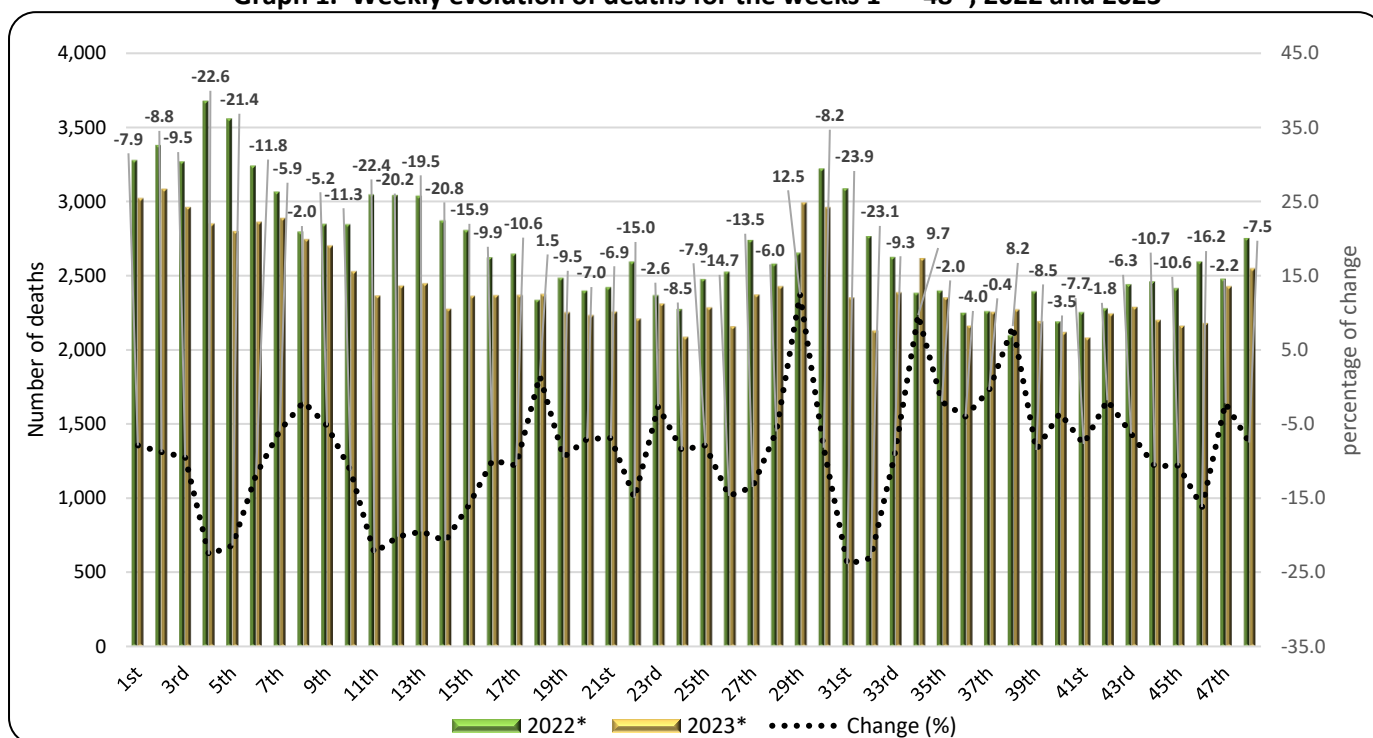
HELLENIC STATISTICAL AUTHORITY

DATA ON WEEKLY DEATHS: Period 1<sup>st</sup> to 48<sup>th</sup> week, 2023

The Hellenic Statistical Authority (ELSTAT) announces the provisional statistical data depicting the weekly evolution of death counts for the period from the first (1<sup>st</sup>) to the forty-eighth (48<sup>th</sup>) week of 2023 (2/1/2023 – 3/12/2023). Data refer to the deaths that occurred in the Greek territory during that period due to various causes including deaths attributed to Covid-19.

The data included in this publication are compiled within the framework of the Vital Statistics Survey, are drawn from civil registry acts as submitted by Municipal Authorities and refer to vital events declared and registered until the date of data transmission. Overdue registrations of deaths are integrated at a later stage on the date of occurrence. According to these data, the number of deaths in Greece during the first forty-eight (48) weeks of 2023 (2/1/2023 – 3/12/2023) amounted to 116,808 (59,202 men and 57,606 women), whereas during the corresponding period of 2022 (3/1/2022 – 4/12/2022) had amounted to 129,244 (64,991 men and 64,253 women) recording a decrease of 12,436 deaths (-9.6%). A decrease of 2,652 deaths (-2.2%) is recorded compared to the average of the first forty-eight (48) week cumulative deaths for the six-year period 2017 – 2022 (119,460 deaths). The corresponding annual rates of change for the period 2017 - 2022 amount to -0.9% in 2022 compared to 2021 (130,425), 10.4% in 2021 compared to 2020 (118,125), 3.0% in 2020 compared to 2019 (114,659), 4.4% in 2019 compared to 2018 (109,831) and -4.1% in 2018 compared to 2017 (114,473) (Tables 1, 2, 3 and 4).

Graph 1. Weekly evolution of deaths for the weeks 1<sup>st</sup> – 48<sup>th</sup>, 2022 and 2023



\*Provisional data

Information on methodological issues:

Population, Employment and Cost of Living Statistics Division  
Population and Migration Statistics Section  
Thymoglou Georgia, tel: +30 213 135 2175, e-mail: [g.thymoglou@statistics.gr](mailto:g.thymoglou@statistics.gr)  
Christou Christos, tel: +30 213 135 2884, e-mail: [c.christou@statistics.gr](mailto:c.christou@statistics.gr)

Information on data provision:

tel: +30 213 135 2022, 2308, 2310  
e-mail: [data.dissem@statistics.gr](mailto:data.dissem@statistics.gr)

**Table 1. Weekly evolution of deaths, 2022 and 2023**

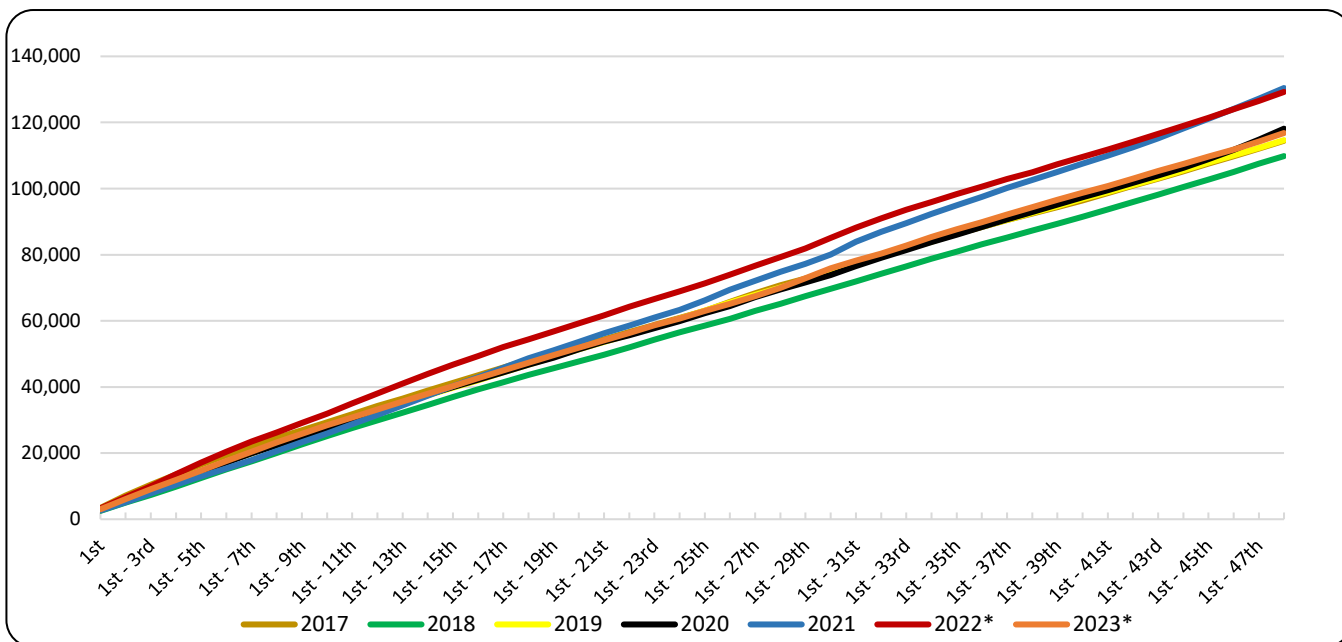
<b>Week</b>	<b>2022*</b>	<b>2023*</b>	<b>Change (%)</b>
1 <sup>st</sup>	3,278	3,018	-7.9
2 <sup>nd</sup>	3,378	3,081	-8.8
3 <sup>rd</sup>	3,269	2,957	-9.5
4 <sup>th</sup>	3,677	2,847	-22.6
5 <sup>th</sup>	3,558	2,797	-21.4
6 <sup>th</sup>	3,241	2,858	-11.8
7 <sup>th</sup>	3,065	2,884	-5.9
8 <sup>th</sup>	2,797	2,742	-2.0
9 <sup>th</sup>	2,847	2,698	-5.2
10 <sup>th</sup>	2,846	2,525	-11.3
11 <sup>th</sup>	3,046	2,363	-22.4
12 <sup>th</sup>	3,042	2,428	-20.2
13 <sup>th</sup>	3,037	2,444	-19.5
14 <sup>th</sup>	2,872	2,274	-20.8
15 <sup>th</sup>	2,806	2,359	-15.9
16 <sup>th</sup>	2,624	2,365	-9.9
17 <sup>th</sup>	2,647	2,366	-10.6
18 <sup>th</sup>	2,336	2,372	1.5
19 <sup>th</sup>	2,485	2,250	-9.5
20 <sup>th</sup>	2,398	2,231	-7.0
21 <sup>st</sup>	2,423	2,255	-6.9
22 <sup>nd</sup>	2,596	2,207	-15.0
23 <sup>rd</sup>	2,369	2,308	-2.6
24 <sup>th</sup>	2,276	2,083	-8.5
25 <sup>th</sup>	2,477	2,282	-7.9
26 <sup>th</sup>	2,526	2,154	-14.7
27 <sup>th</sup>	2,740	2,369	-13.5
28 <sup>th</sup>	2,580	2,425	-6.0
29 <sup>th</sup>	2,654	2,987	12.5
30 <sup>th</sup>	3,222	2,958	-8.2
31 <sup>st</sup>	3,088	2,350	-23.9
32 <sup>nd</sup>	2,765	2,126	-23.1
33 <sup>rd</sup>	2,626	2,383	-9.3
34 <sup>th</sup>	2,383	2,615	9.7
35 <sup>th</sup>	2,399	2,350	-2.0
36 <sup>th</sup>	2,249	2,160	-4.0
37 <sup>th</sup>	2,260	2,251	-0.4
38 <sup>th</sup>	2,098	2,270	8.2
39 <sup>th</sup>	2,394	2,190	-8.5
40 <sup>th</sup>	2,192	2,116	-3.5
41 <sup>st</sup>	2,253	2,079	-7.7
42 <sup>nd</sup>	2,280	2,240	-1.8
43 <sup>rd</sup>	2,441	2,287	-6.3
44 <sup>th</sup>	2,462	2,198	-10.7
45 <sup>th</sup>	2,415	2,159	-10.6
46 <sup>th</sup>	2,596	2,176	-16.2
47 <sup>th</sup>	2,479	2,425	-2.2
48 <sup>th</sup>	2,752	2,546	-7.5
<b>Total</b>	<b>129,244</b>	<b>116,808</b>	<b>-9.6</b>

\*Provisional data

According to the above data, for the first forty-eight (48) weeks of 2023 compared to the corresponding period of 2022, a decrease of deaths is observed for all weeks, except from the 29<sup>th</sup> (17/7/2023 - 23/7/2023), the 34<sup>th</sup> (21/8/2023 - 27/8/2023), the 38<sup>th</sup> (18/9/2023 - 24/9/2023) and the 18<sup>th</sup> (1/5/2023 - 7/5/2023) week, which show an increase of 12.5%, 9.7%, 8.2% and 1.5% respectively. The highest percentage decreases of deaths are observed for the 31<sup>st</sup> (31/7/2023 - 6/8/2023), the 32<sup>nd</sup> (7/8/2023 - 13/8/2023) and the 4<sup>th</sup> (23/1/2023 - 29/1/2023) week by 23.9%, 23.1% and 22.6% respectively.

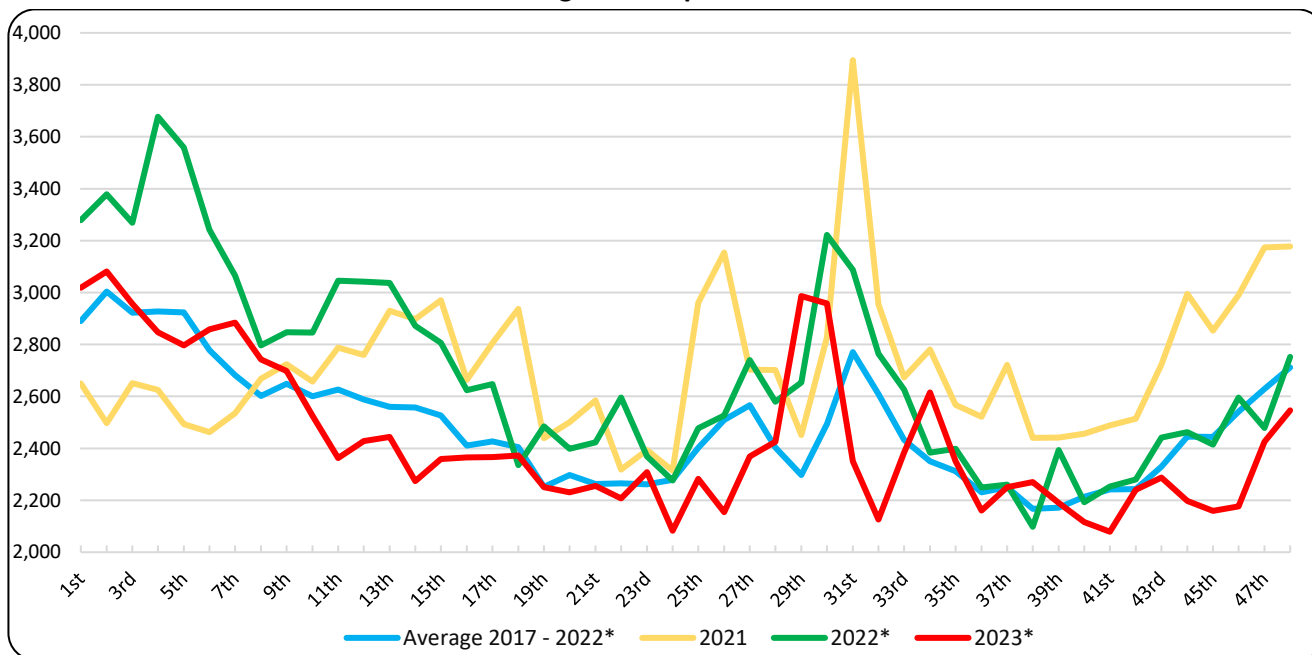
It should be noted that data are updated after integration of more recent data or upon revision of already transmitted data by the Registry Offices. Consequently, data may differ from those already announced in previous publications.

**Graph 2. Deaths for the weeks 1<sup>st</sup> – 48<sup>th</sup>, 2017 - 2023 (cumulative)**



\*Provisional data

**Graph 3. Deaths by week for the weeks 1<sup>st</sup> – 48<sup>th</sup>, 2021, 2022, 2023 and Average for the period 2017-2022**



\*Provisional data

**Table 2. Deaths for the weeks 1<sup>st</sup> – 48<sup>th</sup>, 2017 - 2023 (cumulative)**

<b>Week</b>	<b>2017</b>	<b>2018</b>	<b>2019</b>	<b>2020</b>	<b>2021</b>	<b>2022*</b>	<b>2023*</b>	<b>Average 2017 - 2022*</b>
1 <sup>st</sup>	3,425	2,533	2,706	2,749	2,650	3,278	3,018	2,890
1 <sup>st</sup> - 2 <sup>nd</sup>	7,105	4,986	5,811	5,659	5,147	6,656	6,099	5,894
1 <sup>st</sup> - 3 <sup>rd</sup>	10,469	7,331	8,850	8,522	7,798	9,925	9,056	8,816
1 <sup>st</sup> - 4 <sup>th</sup>	13,551	9,879	11,710	11,294	10,423	13,602	11,903	11,743
1 <sup>st</sup> - 5 <sup>th</sup>	16,553	12,484	14,603	14,284	12,916	17,160	14,700	14,667
1 <sup>st</sup> - 6 <sup>th</sup>	19,343	15,041	17,375	17,133	15,379	20,401	17,558	17,445
1 <sup>st</sup> - 7 <sup>th</sup>	22,018	17,510	19,938	19,915	17,914	23,466	20,442	20,127
1 <sup>st</sup> - 8 <sup>th</sup>	24,541	20,003	22,598	22,385	20,582	26,263	23,184	22,729
1 <sup>st</sup> - 9 <sup>th</sup>	26,940	22,613	25,367	24,928	23,306	29,110	25,882	25,377
1 <sup>st</sup> - 10 <sup>th</sup>	29,345	25,145	27,886	27,572	25,963	31,956	28,407	27,978
1 <sup>st</sup> - 11 <sup>th</sup>	31,789	27,560	30,356	30,168	28,751	35,002	30,770	30,604
1 <sup>st</sup> - 12 <sup>th</sup>	34,247	29,890	32,747	32,718	31,510	38,044	33,198	33,193
1 <sup>st</sup> - 13 <sup>th</sup>	36,500	32,255	35,079	35,157	34,440	41,081	35,642	35,752
1 <sup>st</sup> - 14 <sup>th</sup>	38,863	34,596	37,492	37,611	37,338	43,953	37,916	38,309
1 <sup>st</sup> - 15 <sup>th</sup>	41,226	36,945	39,804	39,973	40,309	46,759	40,275	40,836
1 <sup>st</sup> - 16 <sup>th</sup>	43,593	39,264	42,024	42,241	42,972	49,383	42,640	43,246
1 <sup>st</sup> - 17 <sup>th</sup>	45,918	41,439	44,427	44,446	45,777	52,030	45,006	45,673
1 <sup>st</sup> - 18 <sup>th</sup>	48,183	43,665	46,787	46,753	48,714	54,366	47,378	48,078
1 <sup>st</sup> - 19 <sup>th</sup>	50,342	45,645	49,110	48,880	51,153	56,851	49,628	50,330
1 <sup>st</sup> - 20 <sup>th</sup>	52,372	47,757	51,378	51,352	53,654	59,249	51,859	52,627
1 <sup>st</sup> - 21 <sup>st</sup>	54,385	49,778	53,588	53,681	56,238	61,672	54,114	54,890
1 <sup>st</sup> - 22 <sup>nd</sup>	56,597	52,001	55,869	55,644	58,556	64,268	56,321	57,156
1 <sup>st</sup> - 23 <sup>rd</sup>	58,718	54,303	58,154	57,745	60,949	66,637	58,629	59,418
1 <sup>st</sup> - 24 <sup>th</sup>	60,854	56,491	60,700	59,956	63,263	68,913	60,712	61,696
1 <sup>st</sup> - 25 <sup>th</sup>	63,024	58,571	63,076	62,308	66,223	71,390	62,994	64,099
1 <sup>st</sup> - 26 <sup>th</sup>	65,756	60,616	65,495	64,488	69,377	73,916	65,148	66,608
1 <sup>st</sup> - 27 <sup>th</sup>	68,298	62,977	67,872	67,158	72,080	76,656	67,517	69,174
1 <sup>st</sup> - 28 <sup>th</sup>	70,716	65,137	70,130	69,462	74,782	79,236	69,942	71,577
1 <sup>st</sup> - 29 <sup>th</sup>	72,806	67,493	72,227	71,598	77,233	81,890	72,929	73,875
1 <sup>st</sup> - 30 <sup>th</sup>	74,949	69,688	74,564	73,835	80,060	85,112	75,887	76,368
1 <sup>st</sup> - 31 <sup>st</sup>	77,256	71,919	76,950	76,549	83,955	88,200	78,237	79,138
1 <sup>st</sup> - 32 <sup>nd</sup>	79,982	74,207	79,341	79,078	86,909	90,965	80,363	81,747
1 <sup>st</sup> - 33 <sup>rd</sup>	82,270	76,492	81,702	81,446	89,582	93,591	82,746	84,181
1 <sup>st</sup> - 34 <sup>th</sup>	84,322	78,752	83,966	83,807	92,363	95,974	85,361	86,531
1 <sup>st</sup> - 35 <sup>th</sup>	86,398	80,930	86,322	86,105	94,930	98,373	87,711	88,843
1 <sup>st</sup> - 36 <sup>th</sup>	88,374	83,126	88,444	88,421	97,452	100,622	89,871	91,073
1 <sup>st</sup> - 37 <sup>th</sup>	90,474	85,189	90,528	90,695	100,173	102,882	92,122	93,324
1 <sup>st</sup> - 38 <sup>th</sup>	92,454	87,289	92,638	92,970	102,613	104,980	94,392	95,491
1 <sup>st</sup> - 39 <sup>th</sup>	94,380	89,311	94,725	95,126	105,055	107,374	96,582	97,662
1 <sup>st</sup> - 40 <sup>th</sup>	96,456	91,487	96,883	97,350	107,511	109,566	98,698	99,876
1 <sup>st</sup> - 41 <sup>st</sup>	98,641	93,731	98,953	99,563	110,000	111,819	100,777	102,118
1 <sup>st</sup> - 42 <sup>nd</sup>	100,871	95,895	101,076	101,707	112,514	114,099	103,017	104,360
1 <sup>st</sup> - 43 <sup>rd</sup>	103,028	98,156	103,246	103,931	115,236	116,540	105,304	106,690
1 <sup>st</sup> - 44 <sup>th</sup>	105,242	100,457	105,529	106,344	118,231	119,002	107,502	109,134
1 <sup>st</sup> - 45 <sup>th</sup>	107,552	102,689	107,832	108,893	121,084	121,417	109,661	111,578
1 <sup>st</sup> - 46 <sup>th</sup>	109,818	105,081	110,048	111,678	124,074	124,013	111,837	114,119
1 <sup>st</sup> - 47 <sup>th</sup>	112,137	107,519	112,264	114,827	127,248	126,492	114,262	116,748
1 <sup>st</sup> - 48 <sup>th</sup>	114,473	109,831	114,659	118,125	130,425	129,244	116,808	119,460
<b>Change (%)</b>		<b>-4.1</b>	<b>4.4</b>	<b>3.0</b>	<b>10.4</b>	<b>-0.9</b>	<b>-9.6</b>	

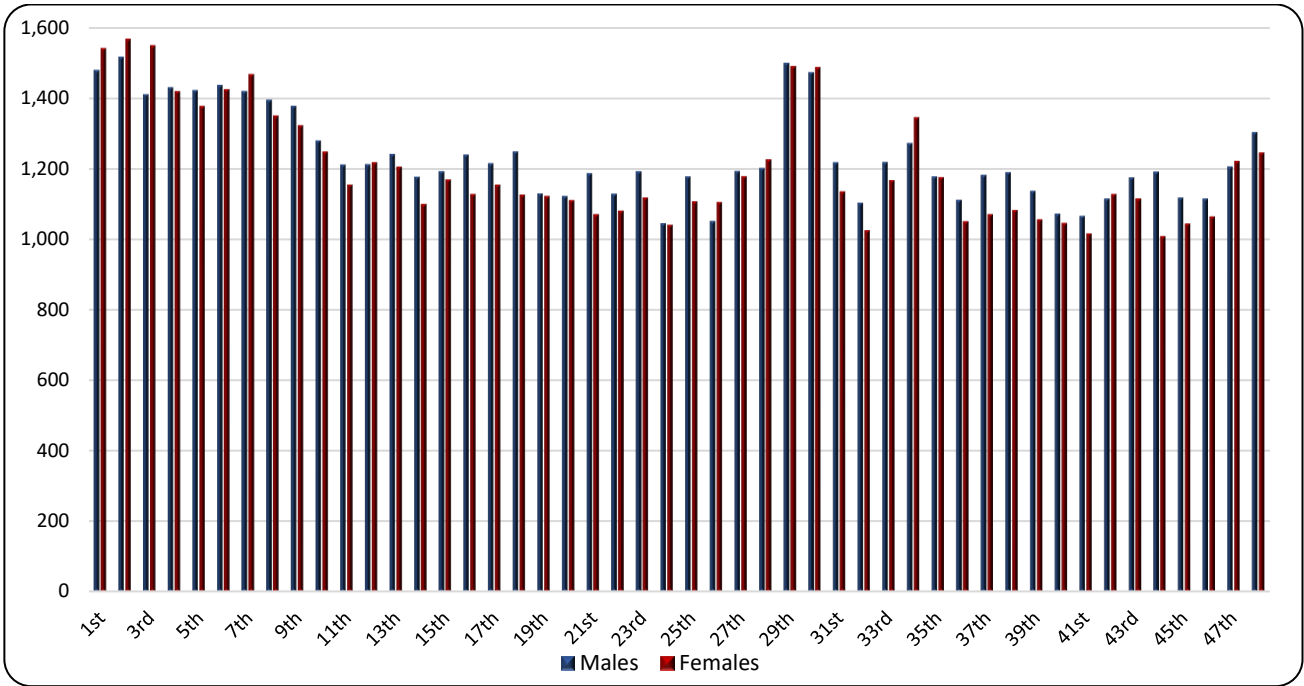
\*Provisional data

**Table 3. Weekly evolution of deaths by sex, for the weeks 1<sup>st</sup> – 48<sup>th</sup>, 2023\***

<b>Week</b>	<b>Total</b>	<b>Males</b>	<b>Females</b>
1 <sup>st</sup>	3,018	1,478	1,540
2 <sup>nd</sup>	3,081	1,515	1,566
3 <sup>rd</sup>	2,957	1,409	1,548
4 <sup>th</sup>	2,847	1,429	1,418
5 <sup>th</sup>	2,797	1,421	1,376
6 <sup>th</sup>	2,858	1,435	1,423
7 <sup>th</sup>	2,884	1,418	1,466
8 <sup>th</sup>	2,742	1,393	1,349
9 <sup>th</sup>	2,698	1,376	1,322
10 <sup>th</sup>	2,525	1,278	1,247
11 <sup>th</sup>	2,363	1,210	1,153
12 <sup>th</sup>	2,428	1,211	1,217
13 <sup>th</sup>	2,444	1,240	1,204
14 <sup>th</sup>	2,274	1,175	1,099
15 <sup>th</sup>	2,359	1,191	1,168
16 <sup>th</sup>	2,365	1,238	1,127
17 <sup>th</sup>	2,366	1,213	1,153
18 <sup>th</sup>	2,372	1,247	1,125
19 <sup>th</sup>	2,250	1,128	1,122
20 <sup>th</sup>	2,231	1,121	1,110
21 <sup>st</sup>	2,255	1,185	1,070
22 <sup>nd</sup>	2,207	1,127	1,080
23 <sup>rd</sup>	2,308	1,191	1,117
24 <sup>th</sup>	2,083	1,043	1,040
25 <sup>th</sup>	2,282	1,176	1,106
26 <sup>th</sup>	2,154	1,050	1,104
27 <sup>th</sup>	2,369	1,192	1,177
28 <sup>th</sup>	2,425	1,200	1,225
29 <sup>th</sup>	2,987	1,498	1,489
30 <sup>th</sup>	2,958	1,472	1,486
31 <sup>st</sup>	2,350	1,216	1,134
32 <sup>nd</sup>	2,126	1,102	1,024
33 <sup>rd</sup>	2,383	1,217	1,166
34 <sup>th</sup>	2,615	1,271	1,344
35 <sup>th</sup>	2,350	1,176	1,174
36 <sup>th</sup>	2,160	1,110	1,050
37 <sup>th</sup>	2,251	1,181	1,070
38 <sup>th</sup>	2,270	1,188	1,082
39 <sup>th</sup>	2,190	1,135	1,055
40 <sup>th</sup>	2,116	1,071	1,045
41 <sup>st</sup>	2,079	1,064	1,015
42 <sup>nd</sup>	2,240	1,113	1,127
43 <sup>rd</sup>	2,287	1,173	1,114
44 <sup>th</sup>	2,198	1,190	1,008
45 <sup>th</sup>	2,159	1,116	1,043
46 <sup>th</sup>	2,176	1,113	1,063
47 <sup>th</sup>	2,425	1,204	1,221
48 <sup>th</sup>	2,546	1,302	1,244
<b>Total</b>	<b>116,808</b>	<b>59,202</b>	<b>57,606</b>

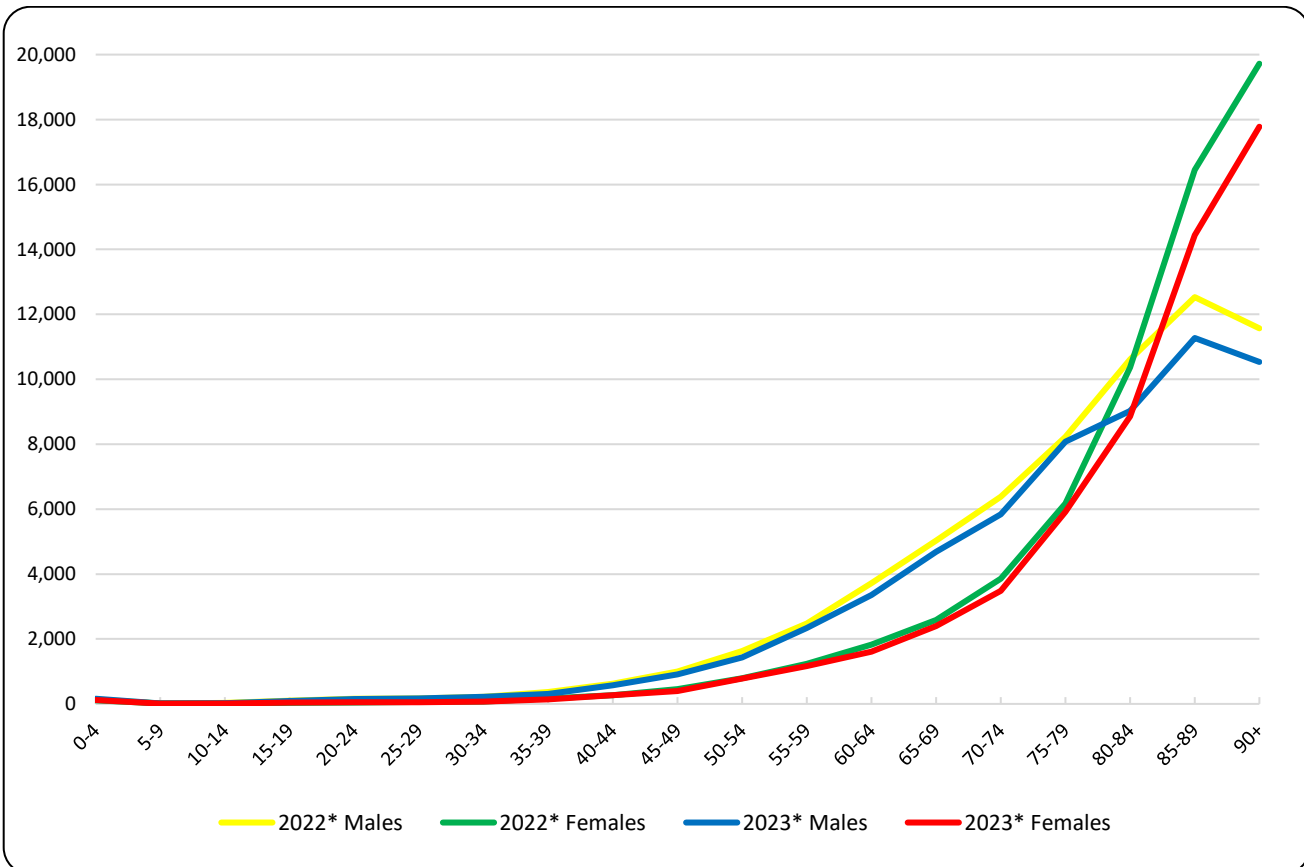
\*Provisional data

**Graph 4. Weekly evolution of deaths by sex, for the weeks 1<sup>st</sup> – 48<sup>th</sup>, 2023\***



\*Provisional data

**Graph 5. Deaths by age group and sex, 1<sup>st</sup> – 48<sup>th</sup> week, 2022 and 2023**



\*Provisional data

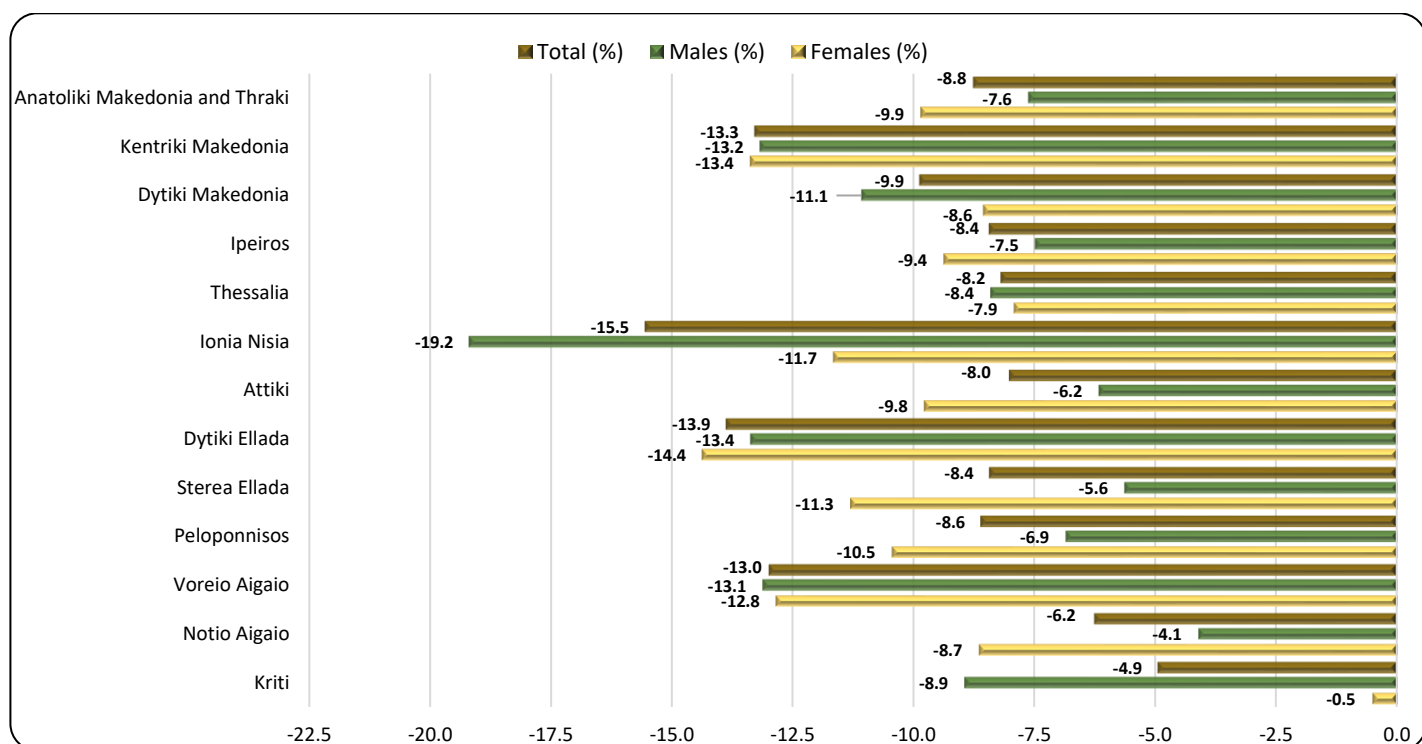
**Table 4. Deaths by age group and sex, weeks 1<sup>st</sup> – 48<sup>th</sup>, 2022 and 2023**

Age Group	2022*			2023*		
	Total	Males	Females	Total	Males	Females
0 - 4	253	138	115	284	162	122
5 - 9	28	13	15	24	15	9
10 - 14	43	27	16	37	25	12
15 - 19	129	97	32	136	92	44
20 - 24	202	161	41	205	151	54
25 - 29	235	173	62	224	172	52
30 - 34	292	218	74	288	217	71
35 - 39	527	362	165	452	308	144
40 - 44	894	626	268	838	571	267
45 - 49	1,456	1,000	456	1,309	910	399
50 - 54	2,423	1,631	792	2,212	1,432	780
55 - 59	3,711	2,474	1,237	3,504	2,339	1,165
60 - 64	5,546	3,718	1,828	4,969	3,358	1,611
65 - 69	7,615	5,034	2,581	7,086	4,685	2,401
70 - 74	10,236	6,378	3,858	9,322	5,839	3,483
75 - 79	14,397	8,221	6,176	14,000	8,080	5,920
80 - 84	20,971	10,609	10,362	17,884	9,026	8,858
85 - 89	28,982	12,530	16,452	25,705	11,271	14,434
90+	31,284	11,564	19,720	28,312	10,534	17,778
Unknown	20	17	3	17	15	2
<b>Total</b>	<b>129,244</b>	<b>64,991</b>	<b>64,253</b>	<b>116,808</b>	<b>59,202</b>	<b>57,606</b>

\*Provisional data

As regards the breakdown of data by age group, during the first forty-eight (48) weeks of 2023 compared to the corresponding period of 2022, a decrease of deaths is observed for most age groups, with the highest decreases, in absolute figures, being observed for the age groups 85 to 89 (-3,277 deaths), 80 to 84 (-3,087 deaths) and over 90 (-2,972 deaths) (Table 4).

**Graph 6. Annual change of deaths 2023\*/2022\* (%) by sex and Region of usual residence, weeks 1<sup>st</sup> – 48<sup>th</sup>**



\*Provisional data

**Table 5. Annual change of deaths 2023/2022 (%) by sex and Region of usual residence, weeks 1<sup>st</sup> – 48<sup>th</sup>**

Region	2022*			2023*			Change (%)		
	Total	Males	Females	Total	Males	Females	Total	Males	Females
Anatoliki Makedonia and Thraki	7,689	3,825	3,864	7,016	3,533	3,483	-8.8	-7.6	-9.9
Kentriki Makedonia	22,890	11,491	11,399	19,851	9,977	9,874	-13.3	-13.2	-13.4
Dytiki Makedonia	3,548	1,832	1,716	3,198	1,629	1,569	-9.9	-11.1	-8.6
Ipeiros	4,128	2,082	2,046	3,780	1,926	1,854	-8.4	-7.5	-9.4
Thessalia	9,362	4,812	4,550	8,596	4,407	4,189	-8.2	-8.4	-7.9
Ionia Nisia	2,734	1,413	1,321	2,309	1,142	1,167	-15.5	-19.2	-11.7
Attiki	43,591	21,397	22,194	40,098	20,076	20,022	-8.0	-6.2	-9.8
Dytiki Ellada	8,475	4,264	4,211	7,300	3,694	3,606	-13.9	-13.4	-14.4
Stereia Ellada	7,053	3,596	3,457	6,459	3,393	3,066	-8.4	-5.6	-11.3
Peloponnisos	7,837	4,038	3,799	7,163	3,761	3,402	-8.6	-6.9	-10.5
Voreio Aigaio	2,388	1,189	1,199	2,078	1,033	1,045	-13.0	-13.1	-12.8
Notio Aigaio	2,977	1,579	1,398	2,791	1,514	1,277	-6.2	-4.1	-8.7
Kriti	6,458	3,397	3,061	6,139	3,094	3,045	-4.9	-8.9	-0.5
Unknown	114	76	38	30	23	7	-73.7	-69.7	-81.6
<b>Total</b>	<b>129,244</b>	<b>64,991</b>	<b>64,253</b>	<b>116,808</b>	<b>59,202</b>	<b>57,606</b>	<b>-9.6</b>	<b>-8.9</b>	<b>-10.3</b>
Abroad	810	538	272	896	610	286	10.6	13.4	5.1

\*Provisional data

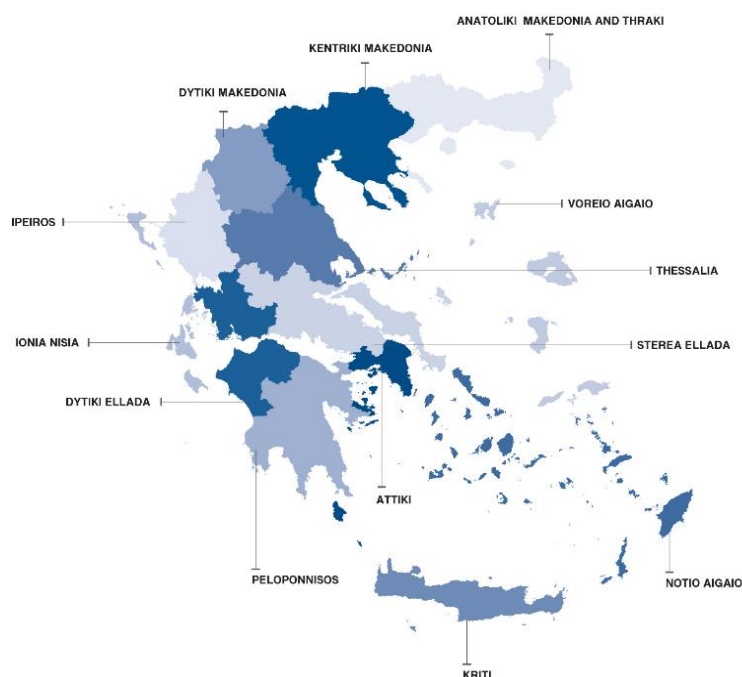
As regards the breakdown of data by place of usual residence of the deceased person, during the first forty-eight (48) weeks of 2023, a decrease of deaths is observed in all thirteen (13) Regions of the Country, compared to the corresponding period of 2022. The most notable decreases, in absolute figures, are observed in the Regions of Attiki, Kentriki Makedonia and Dytiki Ellada by 3,493, 3,039 and 1,175 deaths respectively (Graph 6, Table 5).



## EXPLANATORY NOTES

<b>Vital Statistics-Data on weekly deaths</b>	For the Vital statistics Survey, data are drawn from civil registry acts edited by the Municipal Authorities. Data presented in this publication refer to the weekly evolution of death counts according to the international standard of weeks ISO8601. This is a data processing for the purpose of depicting, even using provisional data, the evolution of deaths in the Country and timely recording of mortality levels in relation to basic demographic variables.
<b>Reference periods</b>	2022: 3/1/2022 - 4/12/2022 2023: 2/1/2023 - 3/12/2023
<b>Legal Framework</b>	Law 344/76 concerning the “Registration of vital events” which lays down the obligations of the Civil Register Offices to collect and then transmit the data, as well as by Law 3832/2010 on the “Greek Statistical System”, both as amended.
<b>Coverage</b>	The Vital Statistics survey is an exhaustive survey and covers all deaths of usual resident population that occur in the Greek territory.
<b>Definitions</b>	All deaths of usual residents taking place in the Greek territory are recorded, regardless of the cause of death. Deaths of usual resident population of other countries are also recorded but not counted. The deaths of migrant-refugees during their attempt to approach European countries are not included.  Causes of death are defined according to the International Statistical Classification of Diseases and Related Health Problems (ICD-10) and basic categories are Diseases of the Circulatory System, Diseases of the Respiratory System, Neoplasms, Infectious and Parasitic Diseases, Violent deaths and other causes, Covid-19 included.
<b>Methodology</b>	Data on deaths and vital statistics undergo the necessary quality checks, are processed, and presented in the form of tables.
<b>Geographical classification</b>	Geographical classification is based on the Nomenclature of Territorial Units for Statistics (NUTS). Data are disseminated at Country and Region (NUTS2) level.

**Map of the Regions (NUTS2) of Greece**



**International Standard of Dates** According to the international standard ISO8601 the first forty-eight (48) weeks of 2022 and 2023 are defined as follows:

WEEK	2022	2023
1 <sup>st</sup>	3/1/2022 - 9/1/2022	2/1/2023 - 8/1/2023
2 <sup>nd</sup>	10/1/2022 - 16/1/2022	9/1/2023 - 15/1/2023
3 <sup>rd</sup>	17/1/2022 - 23/1/2022	16/1/2023 - 22/1/2023
4 <sup>th</sup>	24/1/2022 - 30/1/2022	23/1/2023 - 29/1/2023
5 <sup>th</sup>	31/1/2022 - 6/2/2022	30/1/2023 - 5/2/2023
6 <sup>th</sup>	7/2/2022 - 13/2/2022	6/2/2023 - 12/2/2023
7 <sup>th</sup>	14/2/2022 - 20/2/2022	13/2/2023 - 19/2/2023
8 <sup>th</sup>	21/2/2022 - 27/2/2022	20/2/2023 - 26/2/2023
9 <sup>th</sup>	28/2/2022 - 6/3/2022	27/2/2022 - 5/3/2023
10 <sup>th</sup>	7/3/2022 - 13/3/2022	6/3/2023 - 12/3/2023
11 <sup>th</sup>	14/3/2022 - 20/3/2022	13/3/2023 - 19/3/2023
12 <sup>th</sup>	21/3/2022 - 27/3/2022	20/3/2023 - 26/3/2023
13 <sup>th</sup>	28/3/2022 - 3/4/2022	27/3/2023 - 2/4/2023
14 <sup>th</sup>	4/4/2022 - 10/4/2022	3/4/2023 - 9/4/2023
15 <sup>th</sup>	11/4/2022 - 17/4/2022	10/4/2023 - 16/4/2023
16 <sup>th</sup>	18/4/2022 - 24/4/2022	17/4/2023 - 23/4/2023
17 <sup>th</sup>	25/4/2022 - 1/5/2022	24/4/2023 - 30/4/2023
18 <sup>th</sup>	2/5/2022 - 8/5/2022	1/5/2023 - 7/5/2023
19 <sup>th</sup>	9/5/2022 - 15/5/2022	8/5/2023 - 14/5/2023
20 <sup>th</sup>	16/5/2022 - 22/5/2022	15/5/2023 - 21/5/2023
21 <sup>st</sup>	23/5/2022 - 29/5/2022	22/5/2023 - 28/5/2023
22 <sup>nd</sup>	30/5/2022 - 5/6/2022	29/5/2023 - 4/6/2023
23 <sup>rd</sup>	6/6/2022 - 12/6/2022	5/6/2023 - 11/6/2023
24 <sup>th</sup>	13/6/2022 - 19/6/2022	12/6/2023 - 18/6/2023
25 <sup>th</sup>	20/6/2022 - 26/6/2022	19/6/2023 - 25/6/2023
26 <sup>th</sup>	27/6/2022 - 3/7/2022	26/6/2023 - 2/7/2023
27 <sup>th</sup>	4/7/2022 - 10/7/2022	3/7/2023 - 9/7/2023
28 <sup>th</sup>	11/7/2022 - 17/7/2022	10/7/2023 - 16/7/2023
29 <sup>th</sup>	18/7/2022 - 24/7/2022	17/7/2023 - 23/7/2023
30 <sup>th</sup>	25/7/2022 - 31/7/2022	24/7/2023 - 30/7/2023
31 <sup>st</sup>	1/8/2022 - 7/8/2022	31/7/2023 - 6/8/2023
32 <sup>nd</sup>	8/8/2022 - 14/8/2022	7/8/2023 - 13/8/2023
33 <sup>rd</sup>	15/8/2022 - 21/8/2022	14/8/2023 - 20/8/2023
34 <sup>th</sup>	22/8/2022 - 28/8/2022	21/8/2023 - 27/8/2023
35 <sup>th</sup>	29/8/2022 - 4/9/2022	28/8/2023 - 3/9/2023
36 <sup>th</sup>	5/9/2022 - 11/9/2022	4/9/2023 - 10/9/2023
37 <sup>th</sup>	12/9/2022 - 18/9/2022	11/9/2023 - 17/9/2023
38 <sup>th</sup>	19/9/2022 - 25/9/2022	18/9/2023 - 24/9/2023
39 <sup>th</sup>	26/9/2022 - 2/10/2022	25/9/2023 - 1/10/2023
40 <sup>th</sup>	3/10/2022 - 9/10/2022	2/10/2023 - 8/10/2023
41 <sup>st</sup>	10/10/2022 - 16/10/2022	9/10/2023 - 15/10/2023
42 <sup>nd</sup>	17/10/2022 - 23/10/2022	16/10/2023 - 22/10/2023
43 <sup>rd</sup>	24/10/2022 - 30/10/2022	23/10/2023 - 29/10/2023
44 <sup>th</sup>	31/10/2022 - 6/11/2022	30/10/2023 - 5/11/2023
45 <sup>th</sup>	7/11/2022 - 13/11/2022	6/11/2023 - 12/11/2023
46 <sup>th</sup>	14/11/2022 - 20/11/2022	13/11/2023 - 19/11/2023
47 <sup>th</sup>	21/11/2022 - 27/11/2022	20/11/2023 - 26/11/2023
48 <sup>th</sup>	28/11/2022 - 4/12/2022	27/11/2023 - 3/12/2023

**References** More information on deaths and Vital Statistics is available on the website of ELSTAT: <https://www.statistics.gr/en/home/> following the link: Statistics, Population and Social Conditions, Demography.