



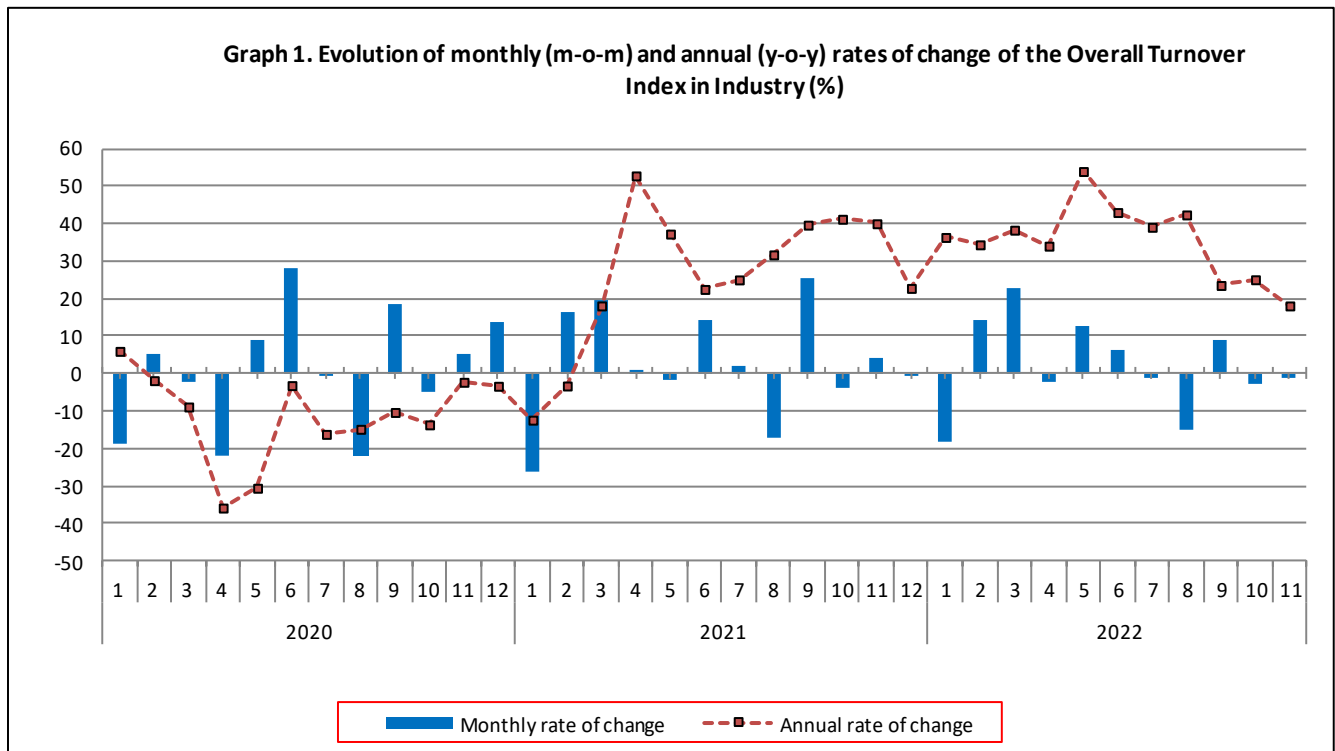
TURNOVER INDEX IN INDUSTRY: November 2022, y-o-y increase of 18.2%

The Hellenic Statistical Authority announces the Turnover Index in Industry with base year 2015=100.0 for November 2022, the evolution of which on the basis of provisional data, is as follows:

The Overall Turnover Index in Industry (both Domestic and Non-Domestic Market) in November 2022 recorded an increase of 18.2% compared with the corresponding index of November 2021. The Overall Turnover Index in Industry in November 2021 increased by 40.1% compared with the corresponding index in November 2020 (Table 1).

The Overall Turnover Index in Industry in November 2022, compared with October 2022, recorded a decrease of 1.4% (Table 6).

The average Overall Turnover Index in Industry for the 12-month period from December 2021 to November 2022 increased by 33.8%, compared with the corresponding index of the 12-month period from December 2020 to November 2021. The average Overall Turnover Index in Industry for the 12-month period from December 2020 to November 2021 increased by 22.9% compared with the corresponding index of the 12-month period from December 2019 to November 2020 (Table 13).



Information on methodological issues:

Division of Business Statistics
Section of Manufacture-Construction Indices and Industrial Products
Head of the Section : Diamantaki Aikaterini
Tel: +30 213 135 2056
E-mail: a.diamantaki@statistics.gr

Information on data provision:

Tel: +30 213 135 2022, 2308, 2310
E-mail: data.dissem@statistics.gr

Evolution of the Overall Turnover Index in Industry in November 2022

I. Annual changes of the Overall Turnover Index in Industry: November 2022/November 2021

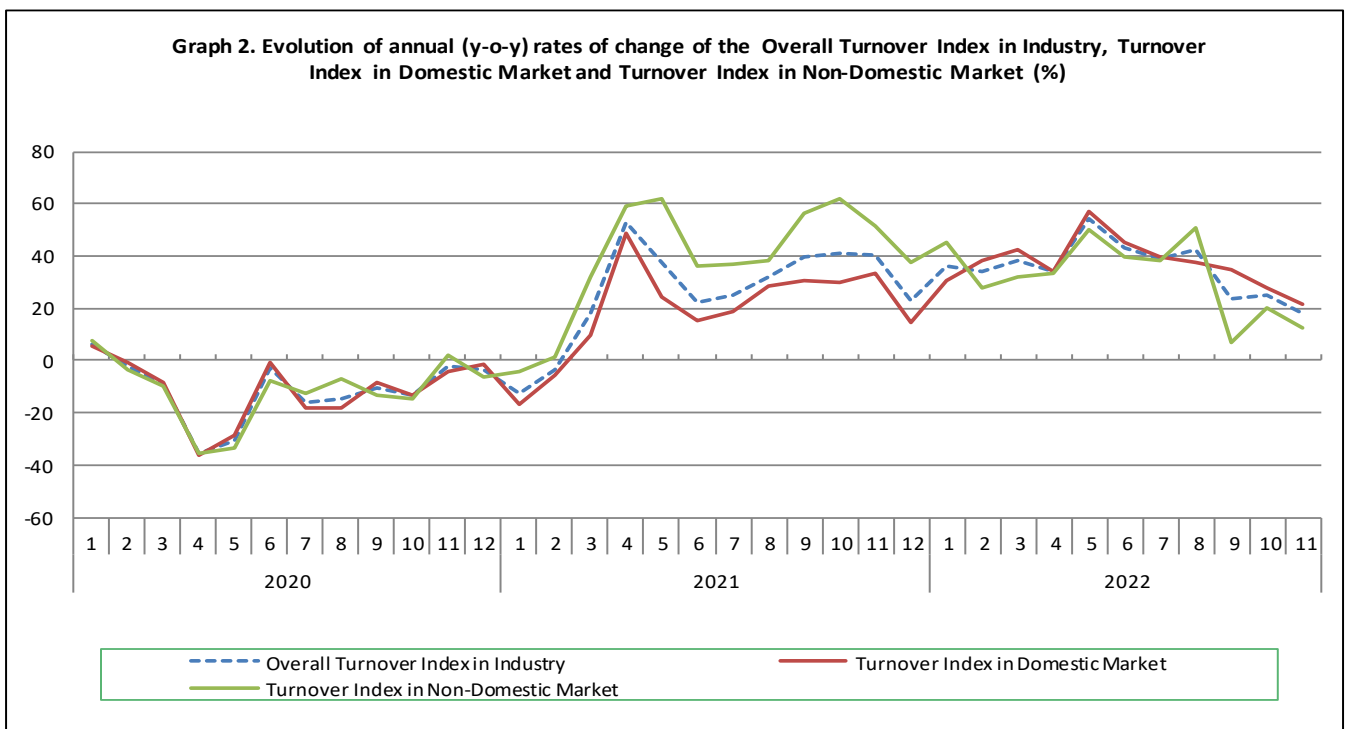
The 18.2% increase in the Overall Turnover Index in Industry in November 2022, compared with the corresponding index in November 2021, was due to the following:

1. Changes in the sub-indices of the industrial sections (Table 1):

- The Turnover Index in Mining and quarrying increased by 29.2%. The increase was the result of the annual changes of the sub-indices in the following 2-digit divisions: other mining and quarrying products, mining of coal and lignite - extraction of crude petroleum and natural gas - mining support service activities.
- The Turnover Index in Manufacturing increased by 18.1%. The increase was mainly the result of the annual changes of the sub-indices in the following 2-digit divisions: tobacco products, coke and refined petroleum products, other non-metallic mineral products, food.

2. Changes in the sub-indices in Domestic and Non-Domestic Markets:

- The Turnover Index in Industry in Domestic Market increased by 21.9% (Table 2).
- The Turnover Index in Industry in Non-Domestic Market increased by 12.4% (Table 3).



II. Annual changes of the Turnover Index in Industry in Domestic Market: November 2022/November 2021

The 21.9% increase of the Turnover Index in Industry in Domestic Market in November 2022, compared with November 2021, is due to the annual changes in the sub-indices of the following industrial sections (Table 2):

- The Turnover Index in Mining and quarrying increased by 34.1%. The increase was the result of the annual changes of the sub-indices in the following 2-digit divisions: other mining and quarrying products, mining of coal and lignite - extraction of crude petroleum and natural gas - mining support service activities.
- The Turnover Index in Manufacturing increased by 21.8%. The increase was mainly the result of the annual changes of the sub-indices in the following 2-digit divisions: coke and refined petroleum products, chemicals and chemical products, other non-metallic mineral products, food.

III. Annual changes of the Turnover Index in Industry in Non-Domestic Market: November 2022/November 2021

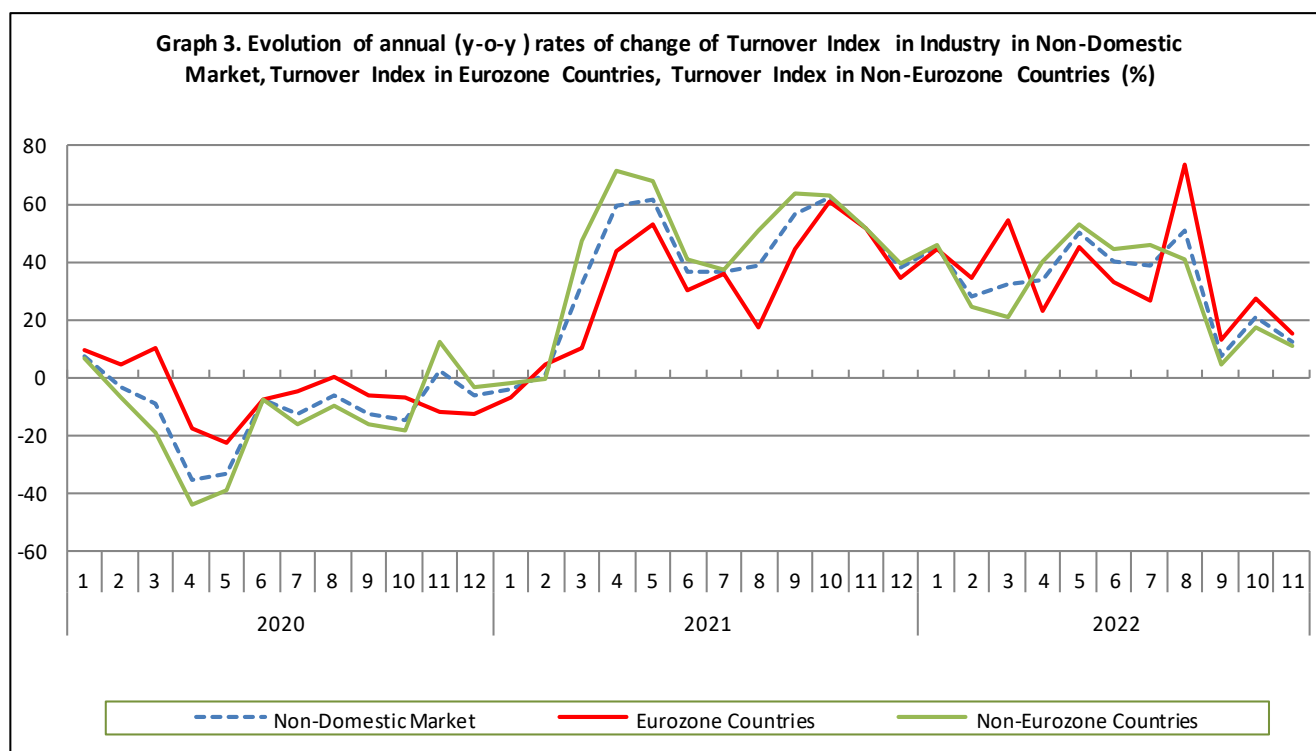
The 12.4% increase of the Turnover Index in Industry in Non-Domestic Market in November 2022, compared with November 2021, was due to the following:

1. Changes in the sub-indices of the industrial sections (Table 3):

- The Turnover Index in Mining and quarrying increased by 25.0%. The increase was the result of the annual change of the sub-index in the following 2-digit division: other mining and quarrying products.
- The Turnover Index in Manufacturing increased by 12.2%. The increase was mainly the result of the annual changes of the sub-indices in the following 2-digit divisions: other transport equipment, tobacco products, basic pharmaceutical products and pharmaceutical preparations, food.

2. Changes in the sub-indices in Eurozone and Non-Eurozone countries:

- The Turnover Index in Industry in Eurozone countries increased by 15.1% (Table 4).
- The Turnover Index in Industry in Non-Eurozone countries increased by 10.9% (Table 5).



IV. Monthly changes of the Overall Turnover Index in Industry: November 2022/October 2022

The 1.4% decrease of the Overall Turnover Index in Industry in November 2022, compared with the corresponding index in October 2022, was due to the following:

1. Changes in the sub-indices of industrial sections (Table 6):

- The Turnover Index in Manufacturing decreased by 1.7%.
- The Turnover Index in Mining and quarrying increased by 31.7%.

2. Changes in the sub-indices in Domestic and Non-Domestic Market:

- The Turnover Index in Industry in Non-Domestic Market decreased by 4.2% (Table 8).
- The Turnover Index in Industry in Domestic Market increased by 0.3% (Table 7).

Table 1. Annual rates of change of the Turnover Index in Industry: Total Market

Base year: 2015=100.0

Code	Division	Weights	November			Rate of change (%)	
			2022*	2021	2020	2022/2021	2021/2020
OVERALL INDEX			171.45	145.11	103.58	18.2	40.1
B	MINING AND QUARRYING	100.00	125.66	97.30	100.02	29.2	-2.7
05-06-09	Mining of coal and lignite - Extraction of crude petroleum and natural gas - Mining support service activities	21.19	16.04	13.69	21.25	17.2	-35.6
07	Mining of metal ores	17.56	172.46	177.99	169.16	-3.1	5.2
08	Other mining and quarrying products	61.25	150.17	103.08	107.45	45.7	-4.1
C MANUFACTURING			172.07	145.75	103.63	18.1	40.6
10	Food	23.39	146.34	122.79	108.82	19.2	12.8
11	Beverages	3.57	106.71	90.82	67.83	17.5	33.9
12	Tobacco products	1.19	222.22	149.47	131.65	48.7	13.5
13	Textiles	1.28	129.93	131.34	96.33	-1.1	36.3
14	Wearing apparel	1.80	92.13	92.37	49.84	-0.3	85.3
15	Leather and related products	0.34	77.09	78.57	43.50	-1.9	80.6
16	Wood and products of wood and cork, except furniture	0.72	138.90	132.52	114.97	4.8	15.3
17	Paper and paper products	2.44	163.74	137.44	117.88	19.1	16.6
18	Printing and reproduction of recorded products	1.17	126.62	114.60	92.17	10.5	24.3
19	Coke and refined petroleum products	28.73	194.08	147.03	69.24	32.0	112.4
20	Chemicals and chemical products	4.43	176.04	149.06	108.40	18.1	37.5
21	Basic pharmaceutical products and pharmaceutical preparations	3.67	241.53	220.93	209.56	9.3	5.4
22	Rubber and plastic products	3.47	155.03	146.67	109.25	5.7	34.3
23	Other non-metallic mineral products	3.31	168.81	139.94	116.23	20.6	20.4
24	Basic metals	7.19	214.73	209.79	138.24	2.4	51.8
25	Fabricated metal products, except machinery and equipment	4.51	135.90	148.83	108.86	-8.7	36.7
26	Computers, electronic and optical products	0.78	261.21	179.48	165.04	45.5	8.8
27	Electrical equipment	2.65	252.52	228.13	191.48	10.7	19.1
28	Machinery and equipment n.e.c.	1.56	153.86	136.70	123.84	12.6	10.4
29	Motor vehicles, trailers and semi-trailers	0.23	166.78	172.43	161.81	-3.3	6.6
30	Other transport equipment	0.52	103.31	100.12	72.88	3.2	37.4
31	Furniture	0.97	155.13	146.30	107.15	6.0	36.5
32	Other manufacturing	0.66	135.96	132.32	88.10	2.8	50.2
33	Repair and installation of machinery and equipment	1.42	135.28	105.44	112.20	28.3	-6.0
MAIN INDUSTRIAL GROUPINGS							
1	Energy	28.57	192.73	146.03	68.91	32.0	111.9
2	Intermediate goods	28.29	182.31	167.49	124.00	8.8	35.1
3	Capital goods	7.00	151.66	140.45	120.48	8.0	16.6
4	Consumer Durables	1.86	177.50	140.73	113.84	26.1	23.6
5	Consumer Non-Durables	34.28	148.46	127.05	111.62	16.9	13.8

* Provisional data

Note: The indices and the percentage changes are rounded up to two and one decimal digits, respectively, when published.

Table 2. Annual rates of change of the Turnover Index in Industry: Domestic Market

Base year: 2015=100.0

Code	Division	Weights	November			Rate of change (%)	
			2022*	2021	2020	2022/2021	2021/2020
OVERALL INDEX			162.17	133.06	99.60	21.9	33.6
B	MINING AND QUARRYING	100.00	105.14	78.37	76.56	34.1	2.4
05-06-09	Mining of coal and lignite - Extraction of crude petroleum and natural gas - Mining support service activities	31.66	18.96	16.18	24.99	17.2	-35.2
07	Mining of metal ores	12.83	91.65	102.95	114.06	-11.0	-9.7
08	Other mining and quarrying products	55.50	157.41	108.17	97.31	45.5	11.2
C	MANUFACTURING	100.00	162.83	133.69	99.86	21.8	33.9
10	Food	28.50	134.42	115.11	103.00	16.8	11.8
11	Beverages	4.86	103.11	88.67	67.20	16.3	31.9
12	Tobacco products	0.51	234.11	216.30	181.60	8.2	19.1
13	Textiles	1.11	122.87	133.17	85.93	-7.7	55.0
14	Wearing apparel	1.77	96.15	96.91	42.45	-0.8	128.3
15	Leather and related products	0.41	82.71	84.33	41.48	-1.9	103.3
16	Wood and products of wood and cork, except furniture	0.96	134.94	125.39	111.92	7.6	12.0
17	Paper and paper products	3.12	158.15	131.27	112.40	20.5	16.8
18	Printing and reproduction of recorded products	1.63	108.22	96.82	75.00	11.8	29.1
19	Coke and refined petroleum products	24.90	185.05	113.87	53.80	62.5	111.6
20	Chemicals and chemical products	4.90	181.66	144.88	103.75	25.4	39.6
21	Basic pharmaceutical products and pharmaceutical preparations	3.85	218.00	231.17	210.94	-5.7	9.6
22	Rubber and plastic products	3.31	157.23	142.99	103.20	10.0	38.6
23	Other non-metallic mineral products	3.31	185.78	154.86	124.65	20.0	24.2
24	Basic metals	3.49	269.05	263.20	174.19	2.2	51.1
25	Fabricated metal products, except machinery and equipment	4.25	166.04	182.65	133.33	-9.1	37.0
26	Computers, electronic and optical products	0.40	130.42	119.90	133.04	8.8	-9.9
27	Electrical equipment	2.24	285.63	233.40	232.82	22.4	0.2
28	Machinery and equipment n.e.c.	1.46	156.59	144.24	122.53	8.6	17.7
29	Motor vehicles, trailers and semi-trailers	0.27	183.35	187.66	179.21	-2.3	4.7
30	Other transport equipment	0.58	28.47	80.62	55.86	-64.7	44.3
31	Furniture	1.35	147.16	136.76	99.70	7.6	37.2
32	Other manufacturing	0.88	128.39	125.14	81.61	2.6	53.3
33	Repair and installation of machinery and equipment	1.92	141.79	110.71	120.25	28.1	-7.9
MAIN INDUSTRIAL GROUPINGS							
1	Energy	24.89	183.33	112.87	53.57	62.4	110.7
2	Intermediate goods	25.73	189.61	165.27	127.13	14.7	30.0
3	Capital goods	7.19	152.65	153.08	131.62	-0.3	16.3
4	Consumer Durables	2.31	154.11	132.61	100.82	16.2	31.5
5	Consumer Non-Durables	39.88	133.45	121.30	104.71	10.0	15.8

* Provisional data

Note: The indices and the percentage changes are rounded up to two and one decimal digits, respectively, when published.

Table 3. Annual rates of change of the Turnover Index in Industry: Non-Domestic Market

Base year: 2015=100.0

Code	Division	Weights	November			Rate of change (%)	
			2022*	2021	2020	2022/2021	2021/2020
OVERALL INDEX			189.72	168.83	111.43	12.4	51.5
B	MINING AND QUARRYING	100.00	152.45	121.99	130.64	25.0	-6.6
05-06-09	Mining of coal and lignite - Extraction of crude petroleum and natural gas - Mining support service activities	7.53	0.00	0.00	0.77	-	-100.0
07	Mining of metal ores	23.74	229.48	230.95	208.05	-0.6	11.0
08	Other mining and quarrying products	68.74	142.54	97.72	118.13	45.9	-17.3
C MANUFACTURING		100.00	190.38	169.65	111.09	12.2	52.7
10	Food	13.27	197.10	155.45	133.60	26.8	16.4
11	Beverages	1.01	141.06	111.34	73.82	26.7	50.8
12	Tobacco products	2.53	217.42	122.53	111.51	77.4	9.9
13	Textiles	1.61	139.62	128.84	110.61	8.4	16.5
14	Wearing apparel	1.86	84.55	83.81	63.77	0.9	31.4
15	Leather and related products	0.19	52.96	53.85	52.14	-1.7	3.3
16	Wood and products of wood and cork, except furniture	0.24	170.32	189.06	139.20	-9.9	35.8
17	Paper and paper products	1.11	194.86	171.73	148.41	13.5	15.7
18	Printing and reproduction of recorded products	0.26	355.83	335.96	306.12	5.9	9.7
19	Coke and refined petroleum products	36.32	206.34	192.10	90.22	7.4	112.9
20	Chemicals and chemical products	3.50	160.48	160.64	121.26	-0.1	32.5
21	Basic pharmaceutical products and pharmaceutical preparations	3.30	295.89	197.25	206.36	50.0	-4.4
22	Rubber and plastic products	3.79	151.21	153.04	119.73	-1.2	27.8
23	Other non-metallic mineral products	3.31	135.16	110.33	99.53	22.5	10.9
24	Basic metals	14.54	188.91	184.39	121.14	2.5	52.2
25	Fabricated metal products, except machinery and equipment	5.03	85.40	92.17	67.85	-7.3	35.8
26	Computers, electronic and optical products	1.52	329.27	210.48	181.69	56.4	15.8
27	Electrical equipment	3.44	209.74	221.32	138.07	-5.2	60.3
28	Machinery and equipment n.e.c.	1.76	149.38	124.31	125.98	20.2	-1.3
29	Motor vehicles, trailers and semi-trailers	0.14	102.24	113.11	94.06	-9.6	20.3
30	Other transport equipment	0.40	316.59	155.71	121.37	103.3	28.3
31	Furniture	0.21	256.59	267.69	202.06	-4.1	32.5
32	Other manufacturing	0.22	194.64	187.92	138.39	3.6	35.8
33	Repair and installation of machinery and equipment	0.43	78.04	59.15	41.51	31.9	42.5
MAIN INDUSTRIAL GROUPINGS							
1	Energy	35.82	205.60	191.41	89.89	7.4	112.9
2	Intermediate goods	33.33	171.22	170.87	119.24	0.2	43.3
3	Capital goods	6.62	149.53	113.44	96.64	31.8	17.4
4	Consumer Durables	0.98	286.38	178.51	174.47	60.4	2.3
5	Consumer Non-Durables	23.25	199.17	146.49	134.96	36.0	8.5

* Provisional data

Note: The indices and the percentage changes are rounded up to two and one decimal digits, respectively, when published.

Table 4. Annual rates of change of the Turnover Index in Industry: Eurozone Countries

Base year: 2015=100.0

Code	Sections and main groupings	November			Rate of change (%)	
		2022*	2021	2020	2022/2021	2021/2020
OVERALL INDEX		197.42	171.48	113.15	15.1	51.6
INDUSTRIAL SECTIONS						
B	MINING AND QUARRYING	163.11	136.70	143.33	19.3	-4.6
C	MANUFACTURING	198.11	172.18	112.54	15.1	53.0
MAIN INDUSTRIAL GROUPINGS						
1	Energy	232.45	184.01	70.31	26.3	161.7
2	Intermediate goods	176.42	189.89	123.56	-7.1	53.7
3	Capital goods	143.34	116.64	109.86	22.9	6.2
4	Consumer Durables	478.58	265.84	286.93	80.0	-7.3
5	Consumer Non-Durables	195.14	146.34	125.56	33.4	16.6

* Provisional data

Table 5. Annual rates of change of the Turnover Index in Industry: Non-Eurozone Countries

Base year: 2015=100.0

Code	Sections and main groupings	November			Rate of change (%)	
		2022*	2021	2020	2022/2021	2021/2020
OVERALL INDEX		185.63	167.42	110.51	10.9	51.5
INDUSTRIAL SECTIONS						
B	MINING AND QUARRYING	145.45	112.34	122.31	29.5	-8.2
C	MANUFACTURING	186.28	168.31	110.32	10.7	52.6
MAIN INDUSTRIAL GROUPINGS						
1	Energy	197.86	193.54	95.53	2.2	102.6
2	Intermediate goods	167.83	158.47	116.43	5.9	36.1
3	Capital goods	151.63	112.35	92.16	35.0	21.9
4	Consumer Durables	153.65	118.20	96.81	30.0	22.1
5	Consumer Non-Durables	203.09	146.64	144.10	38.5	1.8

* Provisional data

Note: The indices and the percentage changes are rounded up to two and one decimal digits, respectively, when published.

Table 6. Monthly rate of change of the Turnover Index in Industry: Total Market

Base year: 2015=100.0

Code	Sections and main groupings	November 2022*	October 2022**	Rate of change (%) Nov. 2022 / Oct. 2022
OVERALL INDEX		171.45	173.95	-1.4
INDUSTRIAL SECTIONS				
B	MINING AND QUARRYING	125.66	95.39	31.7
C	MANUFACTURING	172.07	175.01	-1.7
MAIN INDUSTRIAL GROUPINGS				
1	Energy	192.73	219.20	-12.1
2	Intermediate goods	182.31	176.22	3.5
3	Capital goods	151.66	139.00	9.1
4	Consumer Durables	177.50	165.76	7.1
5	Consumer Non-Durables	148.46	141.95	4.6

Table 7. Monthly rate of change of the Turnover Index in Industry: Domestic Market

Base year: 2015=100.0

Code	Sections and main groupings	November 2022*	October 2022**	Rate of change (%) Nov. 2022 / Oct. 2022
OVERALL INDEX		162.17	161.76	0.3
INDUSTRIAL SECTIONS				
B	MINING AND QUARRYING	105.14	99.49	5.7
C	MANUFACTURING	162.83	162.48	0.2
MAIN INDUSTRIAL GROUPINGS				
1	Energy	183.33	202.61	-9.5
2	Intermediate goods	189.61	179.89	5.4
3	Capital goods	152.65	143.02	6.7
4	Consumer Durables	154.11	134.30	14.8
5	Consumer Non-Durables	133.45	129.55	3.0

Table 8. Monthly rate of change of the Turnover Index in Industry: Non-Domestic Market

Base year: 2015=100.0

Code	Sections and main groupings	November 2022*	October 2022**	Rate of change (%) Nov. 2022 / Oct. 2022
OVERALL INDEX		189.72	197.96	-4.2
INDUSTRIAL SECTIONS				
B	MINING AND QUARRYING	152.45	90.04	69.3
C	MANUFACTURING	190.38	199.85	-4.7
MAIN INDUSTRIAL GROUPINGS				
1	Energy	205.60	241.90	-15.0
2	Intermediate goods	171.22	170.64	0.3
3	Capital goods	149.53	130.39	14.7
4	Consumer Durables	286.38	312.19	-8.3
5	Consumer Non-Durables	199.17	183.85	8.3

* Provisional data ** Revised data

Note: The indices and the percentage changes are rounded up to two and one decimal digits, respectively, when published.

Table 9. Monthly rate of change of the Turnover Index in Industry: Eurozone Countries

Base year: 2015=100.0

Code	Sections and main groupings	November 2022*	October 2022**	Rate of change (%) Nov. 2022 / Oct. 2022
OVERALL INDEX		197.42	216.61	-8.9
INDUSTRIAL SECTIONS				
B	MINING AND QUARRYING	163.11	31.61	415.9
C	MANUFACTURING	198.11	220.32	-10.1
MAIN INDUSTRIAL GROUPINGS				
1	Energy	232.45	319.54	-27.3
2	Intermediate goods	176.42	183.29	-3.7
3	Capital goods	143.34	134.83	6.3
4	Consumer Durables	478.58	396.89	20.6
5	Consumer Non-Durables	195.14	188.59	3.5

* Provisional data ** Revised data

Table 10. Monthly rate of change of the Turnover Index in Industry: Non-Eurozone Countries

Base year: 2015=100.0

Code	Sections and main groupings	November 2022*	October 2022**	Rate of change (%) Nov. 2022 / Oct. 2022
OVERALL INDEX		185.63	188.05	-1.3
INDUSTRIAL SECTIONS				
B	MINING AND QUARRYING	145.45	128.40	13.3
C	MANUFACTURING	186.28	189.01	-1.4
MAIN INDUSTRIAL GROUPINGS				
1	Energy	197.86	219.54	-9.9
2	Intermediate goods	167.83	162.40	3.3
3	Capital goods	151.63	128.89	17.6
4	Consumer Durables	153.65	253.70	-39.4
5	Consumer Non-Durables	203.09	179.24	13.3

* Provisional data ** Revised data

Note: The indices and the percentage changes are rounded up to two and one decimal digits, respectively, when published.

Table 11. Evolution of the Turnover Index in Industry (y-o-y changes): Total Market

Base year: 2015=100.0

Year and month	Overall Index (Total Market)		Turnover Index in Industry in Domestic Market		Turnover Index in Industry in Non-Domestic Market		
	Index	Annual rate of change (%)	Index	Annual rate of change (%)	Index	Annual rate of change (%)	
2021:	11	145.11	40.1	133.06	33.6	168.83	51.5
	12	144.88	22.8	133.09	14.9	168.12	37.5
2022*:	1	118.83	36.4	105.73	30.9	144.65	45.2
	2	136.03	34.5	128.64	38.6	150.60	28.1
	3	167.14	38.4	152.70	42.7	195.59	32.2
	4	163.55	34.1	149.59	34.5	191.06	33.6
	5	184.15	54.0	166.21	57.0	219.48	49.9
	6	195.47	43.1	185.47	45.0	215.17	39.9
	7	193.42	39.1	179.14	39.5	221.55	38.7
	8	164.39	42.4	153.23	37.7	186.38	50.8
	9	178.95	23.6	177.24	34.6	182.32	7.0
	10	173.95	25.1	161.76	28.2	197.96	20.5
	11	171.45	18.2	162.17	21.9	189.72	12.4

*Provisional data

Table 12. Evolution of the Turnover Index in Industry (y-o-y changes): Non-Domestic Market

Base year: 2015=100.0

Year and month	Overall Index (Non-Domestic Market)		Turnover Index in Industry in Eurozone Countries		Turnover Index in Industry in Non-Eurozone Countries		
	Index	Annual rate of change (%)	Index	Annual rate of change (%)	Index	Annual rate of change (%)	
2021:	11	168.83	51.5	171.48	51.6	167.42	51.5
	12	168.12	37.5	144.92	34.2	180.45	39.0
2022*:	1	144.65	45.2	156.85	44.6	138.16	45.5
	2	150.60	28.1	173.48	34.2	138.44	24.3
	3	195.59	32.2	226.45	54.0	179.18	20.8
	4	191.06	33.6	191.55	23.0	190.80	40.0
	5	219.48	49.9	235.00	45.1	211.23	52.8
	6	215.17	39.9	218.83	32.5	213.22	44.2
	7	221.55	38.7	208.03	26.5	228.73	45.4
	8	186.38	50.8	185.79	73.5	186.69	41.0
	9	182.32	7.0	183.18	12.5	181.86	4.2
	10	197.96	20.5	216.61	26.9	188.05	16.9
	11	189.72	12.4	197.42	15.1	185.63	10.9

*Provisional data

Note: The indices and the percentage changes are rounded up to two and one decimal digits, respectively, when published.

Table 13. Average indices and rates of change (%) of the 12-month periods of Turnover Index in Industry: Total Market
Base year: 2015=100.0

Code	Division	Average Indices of 12-month periods			Rate of change (%)	
		Dec. 2021- Nov. 2022*	Dec. 2020- Nov. 2021	Dec. 2019- Nov. 2020	2022/2021	2021/2020
OVERALL INDEX		166.02	124.04	100.89	33.8	22.9
B	MINING AND QUARRYING	108.95	102.53	99.82	6.3	2.7
05-06-09	Mining of coal and lignite - Extraction of crude petroleum and natural gas - Mining support service activities	21.74	33.42	29.58	-34.9	13.0
07	Mining of metal ores	176.36	165.58	189.59	6.5	-12.7
08	Other mining and quarrying products	119.79	108.36	98.38	10.5	10.1
C	MANUFACTURING	166.79	124.33	100.90	34.2	23.2
10	Food	134.63	111.63	103.14	20.6	8.2
11	Beverages	136.17	114.62	97.62	18.8	17.4
12	Tobacco products	175.29	145.84	132.26	20.2	10.3
13	Textiles	128.61	117.51	96.46	9.4	21.8
14	Wearing apparel	91.85	79.17	68.44	16.0	15.7
15	Leather and related products	80.60	66.54	58.51	21.1	13.7
16	Wood and products of wood and cork, except furniture	141.22	113.85	102.70	24.0	10.8
17	Paper and paper products	152.14	117.22	113.63	29.8	3.2
18	Printing and reproduction of recorded products	116.62	96.68	88.93	20.6	8.7
19	Coke and refined petroleum products	196.64	117.56	79.94	67.3	47.1
20	Chemicals and chemical products	184.83	137.93	119.07	34.0	15.8
21	Basic pharmaceutical products and pharmaceutical preparations	208.02	184.82	165.61	12.5	11.6
22	Rubber and plastic products	153.88	130.02	108.74	18.4	19.6
23	Other non-metallic mineral products	145.83	120.57	102.50	20.9	17.6
24	Basic metals	217.47	159.52	118.93	36.3	34.1
25	Fabricated metal products, except machinery and equipment	135.93	121.26	97.83	12.1	24.0
26	Computers, electronic and optical products	233.04	185.31	160.44	25.8	15.5
27	Electrical equipment	215.24	185.88	133.67	15.8	39.1
28	Machinery and equipment n.e.c.	136.57	122.38	105.83	11.6	15.6
29	Motor vehicles, trailers and semi-trailers	178.18	118.18	113.02	50.8	4.6
30	Other transport equipment	89.62	80.19	64.96	11.8	23.4
31	Furniture	147.94	120.85	105.30	22.4	14.8
32	Other manufacturing	129.33	110.08	88.58	17.5	24.3
33	Repair and installation of machinery and equipment	114.32	101.96	98.93	12.1	3.1
MAIN INDUSTRIAL GROUPINGS						
1	Energy	195.33	116.97	79.61	67.0	46.9
2	Intermediate goods	175.91	138.28	112.27	27.2	23.2
3	Capital goods	137.40	121.20	104.06	13.4	16.5
4	Consumer Durables	146.54	115.88	99.17	26.5	16.8
5	Consumer Non-Durables	140.32	119.19	108.67	17.7	9.7

*Provisional data

Note: The indices and the percentage changes are rounded up to two and one decimal digits, respectively, when published.

METHODOLOGICAL NOTES

Generally	The Industrial Turnover Index is an indicator of an enterprise's business cycle showing the monthly evolution of the market of goods and services in industry. The first compilation of the Turnover Index was completed by the Hellenic Statistical Authority in 2006, with base year 2000=100.0 and is compiled from 2000 onwards.
Purpose of the index	The purpose of this index is to measure the monthly activity of the industrial sector in terms of value. Turnover comprises the totals invoiced by the observation units during the reference period and corresponds to the market sales of goods or services supplied to third parties. The purposes and the characteristics of the Turnover Index apply, as well, to the indices for the distinction between domestic and non-domestic turnover.
Legal Framework	The compilation and publication of the Turnover Index is based on the framework of the implementation of Council Regulation (EC) No 1165/1998 concerning short-term statistics (STS-R), as well as Regulation (EC) No 1158/2005 of the European Parliament and of the Council amending Council Regulation (EC) No 1165/1998. Furthermore, this index is governed by Regulation (EC) No 1893/2006 of the European Parliament and of the Council, by Commission Regulation (EC) No 656/2007, by Regulation (EC) No 451/2008 of the Council, by Regulation (EU) No 2019/2152 of the European Parliament and of the Council on European business statistics, as well as Commission Implementing Regulation (EU) No 2020/1197 laying down technical specifications and arrangements pursuant to Regulation (EU) No 2019/2152.
Reference period	Month.
Base year	2015=100.0.
Revision	The latest revision of the Turnover Index in Industry (base year 2015=100.0) took place in the framework of Council Regulation (EC) No 1165/1998 concerning short-term statistics. In accordance with this regulation the index is revised every five years, in years ending in 0 or 5.
Statistical classifications	At the level of classes of economic activities, the statistical classification of economic activities NACE Rev. 2 of EU was used (Regulation No 1893/2006), while at the level of main industrial groupings, the allocation of two-digit and three-digit NACE Rev. 2 headings to categories of aggregate classification was used, in accordance with Commission Regulation No 656/2007.
Geographical coverage	The index covers the whole Country.
Coverage of economic activities	The Turnover Index in Industry is compiled for all activities listed in Sections B (mining and quarrying) and C (manufacturing) of the NACE Rev. 2 statistical classification.
Computation of the Index	The Turnover Index in Industry is a fixed base index. This index is calculated at a first stage at the four-digit level of economic activity and subsequently, with the implementation of appropriate weighting coefficients, the index is calculated at higher levels (three-level and two-level of economic activity) as well as at the level of Main Industrial Groupings (MIGs).
Publication of data	The Turnover Index in Industry (2015=100.0) is released since August 2019 with June 2019 as first reference month. Data with base year 2015=100.0 are available from January 2000 onwards.
References	More information about the methodology concerning the compilation and calculation of the index and for the time series is available on the website of the Hellenic Statistical Authority (ELSTAT) (http://www.statistics.gr/en/statistics/-/publication/DKT24/).