



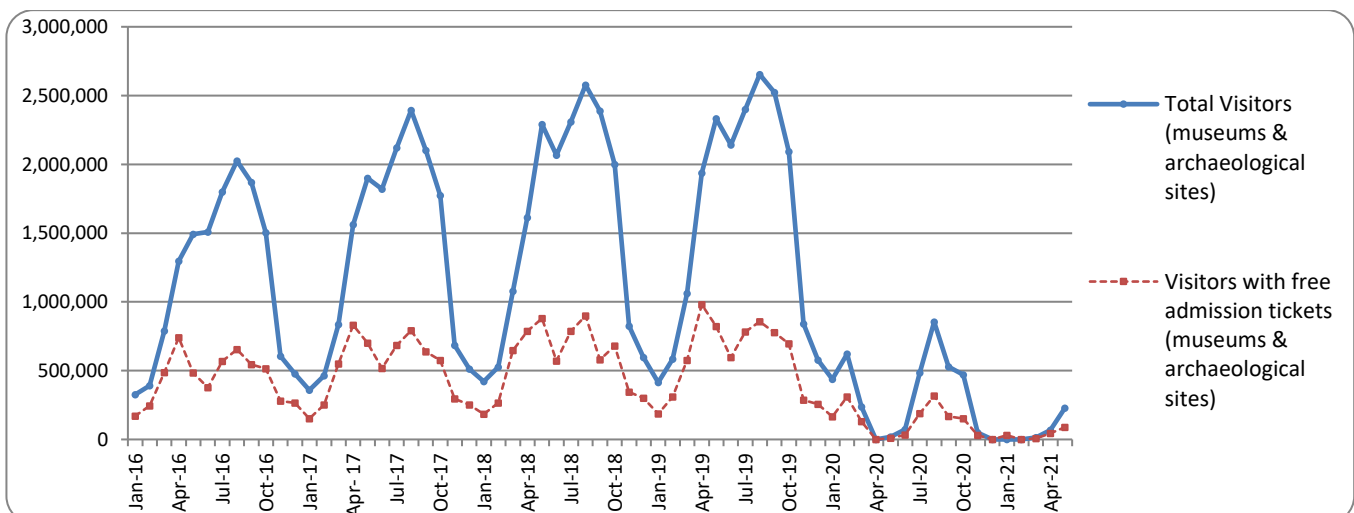
PRESS RELEASE

SURVEY ON MUSEUMS AND ARCHAEOLOGICAL SITES ATTENDANCE MAY 2021

The Hellenic Statistical Authority (ELSTAT) announces the results of the *Survey on Museums and Archaeological Sites Attendance* for May 2021. More specifically:

- Museums, whose operation was suspended from March 14th until June 16th 2020 and again gradually from November 1st 2020 until May 13th 2021, in the framework of the preventative measures against the Covid-19 pandemic, during May 2021 operated for a total period of eighteen (18) calendar days. (Table 1).
- In May 2021 compared with the corresponding month of 2020, the number of visitors at Archaeological sites recorded an increase of 783.5%, while an increase of 453.0% was observed in the number of free admission visitors and a 1332.7% increase in the corresponding receipts, given the fact that due to the suspension of operation from March 14th 2020 until May 17th 2020 in the framework of the preventative measures against the Covid-19 pandemic, they operated for fourteen (14) calendar days during May 2020 but operated fully during May 2021 (Table 1).
- During the five month period from January to May 2021, a decrease of 87.5% was observed in the number of visitors of Museums, while a decrease of 88.7% was recorded in the number of free admission visitors and a 76.6% decrease in the relevant receipts, given the suspension of operation, from March 14th until June 16th 2020 and again gradually from November 1st 2020 until May 13th 2021, in the framework of the preventative measures against the Covid-19 pandemic (Table 2).
- As regards Archaeological sites, during the five month period from January to May 2021, compared to the corresponding period of 2020, a decrease of 69.1% was recorded in the number of visitors, while a decrease of 68.7% was observed in the number of free admission visitors and a decrease of 55.9% was observed in the relevant receipts, given the suspension of operation of Archaeological sites from March 14th until May 17th 2020 and from November 7th 2020 until March 21st 2021 (Table 2).

Graph 1: Visitors of Museums and Archaeological sites (January 2016 – May 2021)



Information on methodological issues:

Sectoral Statistics Division
Tourism and Cultural Statistics Section
Head of the Section: Asimina Katri
Tel: +30 213 135 2168
e-mail: a.katri@statistics.gr

Information for data provision:

Tel. +30 213 135 2022, 2308, 2310
e-mail: data.dissem@statistics.gr

**TABLE 1: VISITORS OF MUSEUMS AND ARCHAEOLOGICAL SITES - TOTAL RECEIPTS
(MAY 2020 & MAY 2021)**

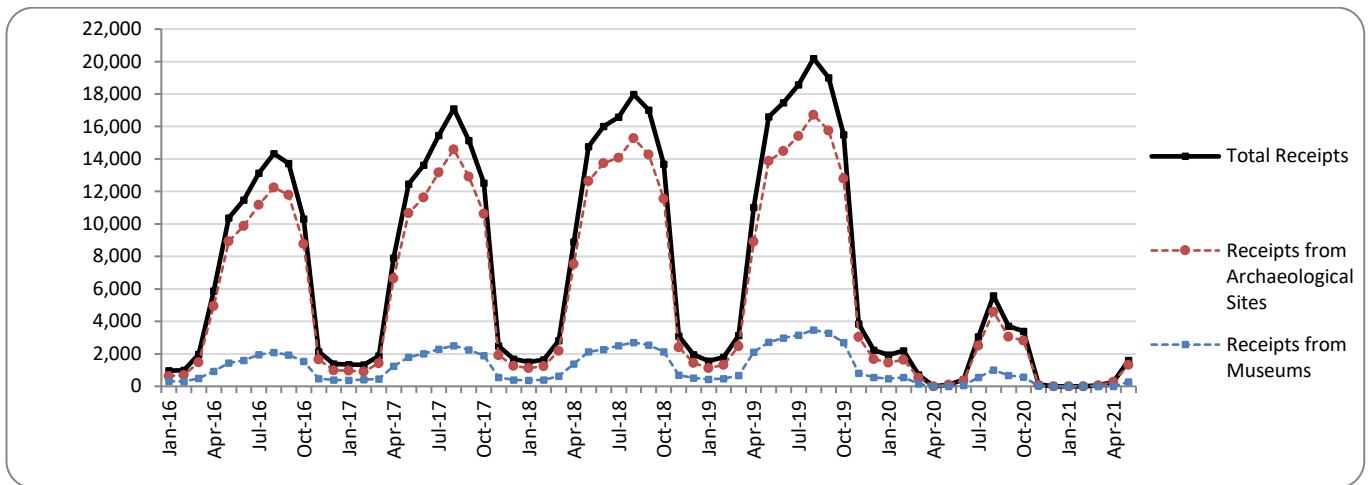
I. NUMBER OF VISITORS			
Museums and Archaeological sites	2020 ⁽²⁾	2021 ⁽²⁾	Change 2021/2020
Total number of visitors (A+B)	18,518	228,786	1135.5%
A. Museums (C+E)	-	65,182	-
Acropolis Museum	-	13,986	-
National Archaeological	-	4,587	-
Ancient Olympia	-	941	-
Palace of the Grand Master (Rhodes)	-	3,178	-
Herakleion Archaeological (Crete)	-	3,114	-
White Tower	-	4,189	-
Delphi	-	1,672	-
Other museums	-	33,515	-
B. Archaeological Sites (D+F)	18,518	163,604	783.5%
Epidavros ⁽¹⁾	495	5,500	1011.1%
The Acropolis of Mycenae & Atreus' Treasure	616	4,294	597.1%
The Acropolis of Athens	5,299	42,855	708.7%
Sounio	3,204	13,339	316.3%
The Acropolis of Lindos	71	7,084	9877.5%
Royal Tombs of Vergina	-	1,859	-
Ancient Olympia	337	4,309	1178.6%
Knossos (Crete)	433	10,429	2308.5%
Phaistos (Crete)	24	1,243	5079.2%
Ancient Korinthos ⁽¹⁾	187	1,619	765.8%
Mystras ⁽¹⁾	167	2,716	1526.3%
Delphi	544	4,282	687.1%
Other archaeological sites	7,141	64,075	797.3%
II. VISITORS WHO PAID TICKET			
	2020 ⁽²⁾	2021 ⁽²⁾	Change 2021/2020
Total number of visitors who paid ticket (C+D)	8,195	141,029	1620.9%
C. Museums	-	34,507	-
D. Archaeological sites	8,195	106,522	1199.8%
III. VISITORS WITH FREE ADMISSION TICKETS			
	2020 ⁽²⁾	2021 ⁽²⁾	Change 2021/2020
Total number of visitors with free admission ticket (E+F)	10,323	87,757	750.1%
E. Museums	-	30,675	-
F. Archaeological sites	10,323	57,082	453.0%
IV. RECEIPTS (euros)			
	2020 ⁽²⁾	2021 ⁽²⁾	Change 2021/2020
Total Receipts (G+H)	91,519	1,590,402	1637.8%
G. Museums	-	279,225	-
H. Archaeological sites	91,519	1,311,177	1332.7%

⁽¹⁾ Flat rate ticket, valid both for the museum and the archaeological site.

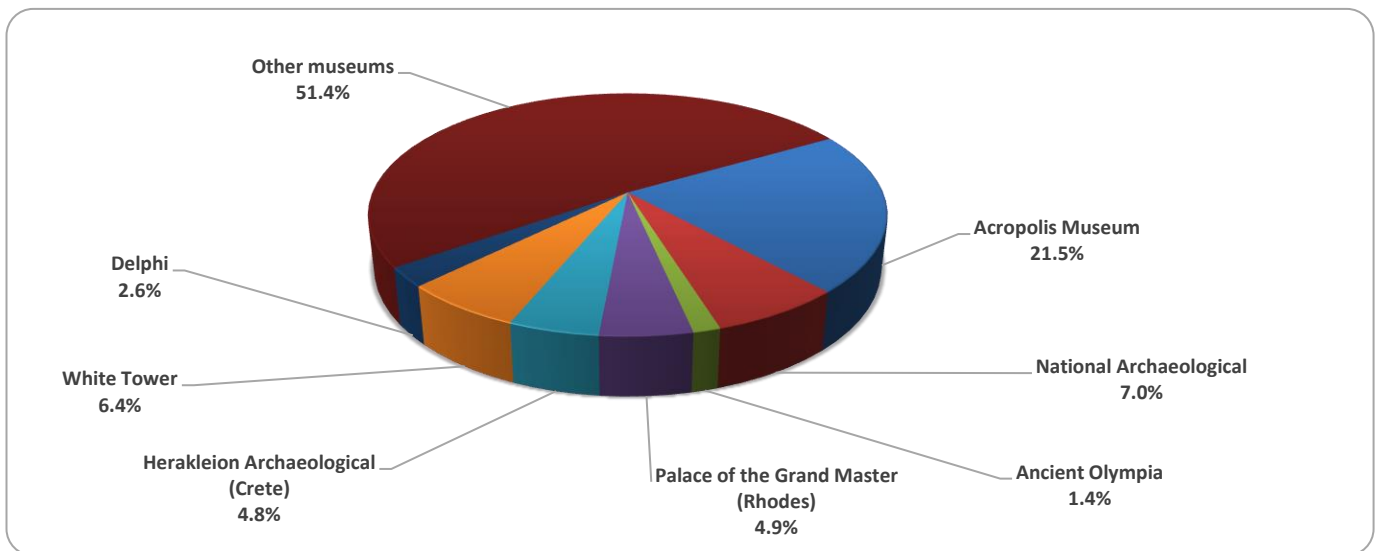
⁽²⁾ The operation of Museums was suspended from March 14th until June 16th 2020 and again gradually from November 1st 2020 until May 13th 2021. The operation of Archaeological Sites was suspended March 14th until May 17th 2020 and from November 7th 2020 until March 21st 2021, in the framework of the preventative measures against the Covid-19 pandemic.

The following graphs depict the evolution of the receipts of Museums and Archaeological Sites (Graph 2), as well as the number of visitors by Archaeological Sites (Graph 3).

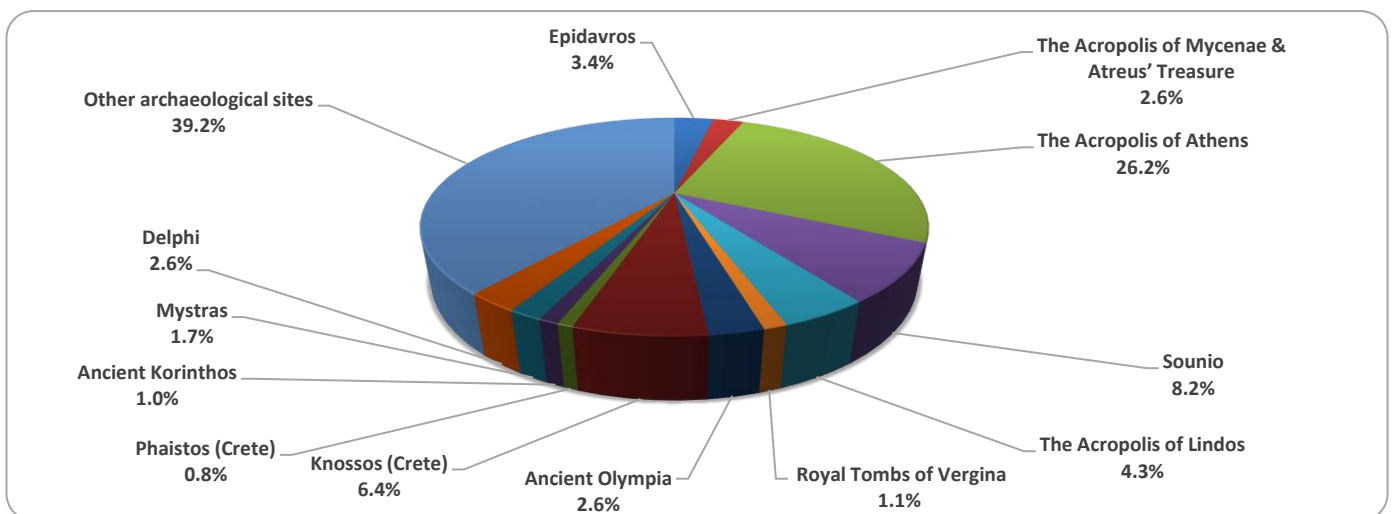
Graph 2: Receipts from Museums and Archaeological Sites (January 2016 – May 2021)
(in thousand euro)



Graph 3: Percentage distribution of visitors by Museum, May 2021



Graph 4: Percentage distribution of visitors by Archaeological site, May 2021



**TABLE 2: VISITORS OF MUSEUMS AND ARCHAEOLOGICAL SITES - TOTAL RECEIPTS
(2019, 2020, JANUARY-MAY 2020, 2021)**

I. VISITORS					
Museums and Archaeological sites	2019	2020 ⁽²⁾	JANUARY-MAY		change 2021/2020
			2020 ⁽²⁾	2021 ⁽²⁾	
Total number of visitors (A+B)	19,559,278	3,772,828	1,314,830	310,736	-76.4%
A. Museums (C+E)	5,895,927	1,100,904	520,305	65,182	-87.5%
Acropolis Museum	1,755,435	325,969	183,711	13,986	-92.4%
National Archaeological	608,876	98,175	61,125	4,587	-92.5%
Ancient Olympia	159,348	21,956	8,129	941	-88.4%
Palace of the Grand Master (Rhodes)	263,958	54,572	4,639	3,178	-31.5%
Herakleion Archaeological (Crete)	660,533	63,027	19,080	3,114	-83.7%
White Tower	251,760	62,007	36,122	4,189	-88.4%
Delphi	275,993	41,984	22,535	1,672	-92.6%
Other museums	1,920,024	433,214	184,964	33,515	-81.9%
B. Archaeological Sites (D+F)	13,663,351	2,671,924	794,525	245,554	-69.1%
Epidavros ⁽¹⁾	535,751	103,532	29,901	6,442	-78.5%
The Acropolis of Mycenae & Atreus' Treasure	502,619	78,839	29,962	5,001	-83.3%
The Acropolis of Athens	3,593,586	620,132	303,080	72,296	-76.1%
Sounio	337,544	100,319	38,950	28,252	-27.5%
The Acropolis of Lindos	525,757	156,462	2,318	7,360	217.5%
Royal Tombs of Vergina	223,151	37,586	19,353	1,859	-90.4%
Ancient Olympia	457,710	64,759	15,332	5,984	-61.0%
Knossos (Crete)	949,192	175,927	23,635	12,235	-48.2%
Phaistos (Crete)	121,796	31,885	8,960	1,409	-84.3%
Ancient Korinthos ⁽¹⁾	214,023	31,981	13,732	2,148	-84.4%
Mystras ⁽¹⁾	147,713	36,352	7,664	3,198	-58.3%
Delphi	405,348	75,983	32,586	5,215	-84.0%
Other archaeological sites	5,649,161	1,158,167	269,052	94,155	-65.0%
II. VISITORS WHO PAID TICKET					
	2019	2020 ⁽²⁾	JANUARY-MAY		change 2021/2020
			2020 ⁽²⁾	2021 ⁽²⁾	
Total number of visitors who paid ticket (C+D)	12,434,987	2,268,397	698,449	172,563	-75.3%
C. Museums	3,345,997	605,426	247,893	34,507	-86.1%
D. Archaeological sites	9,088,990	1,662,971	450,556	138,056	-69.4%
III. VISITORS WITH FREE ADMISSION TICKETS					
	2019	2020 ⁽²⁾	JANUARY-MAY		change 2021/2020
			2020 ⁽²⁾	2021 ⁽²⁾	
Total number of visitors with free admission ticket (E+F)	7,124,291	1,504,431	616,381	138,173	-77.6%
E. Museums	2,549,930	495,478	272,412	30,675	-88.7%
F. Archaeological sites	4,574,361	1,008,953	343,969	107,498	-68.7%
IV. RECEIPTS (euros)					
	2019	2020 ⁽²⁾	JANUARY-MAY		change 2021/2020
			2020 ⁽²⁾	2021 ⁽²⁾	
Total Receipts (G+H)	130,938,846	21,176,036	4,917,214	1,920,430	-60.9%
G. Museums	23,343,026	4,047,401	1,193,563	279,225	-76.6%
H. Archaeological sites	107,595,820	17,128,635	3,723,651	1,641,205	-55.9%

⁽¹⁾ Flat rate ticket, valid both for the museum and the archaeological site.

⁽²⁾ The operation of Museums was suspended from March 14th until June 16th 2020 and again gradually from November 1st 2020 until May 13th 2021. The operation of Archaeological Sites was suspended March 14th until May 17th 2020 and from November 7th 2020 until March 21st 2021, in the framework of the preventative measures against the Covid-19 pandemic.

EXPLANATORY NOTES

Survey on Museums and Archaeological Sites Attendance	The Survey on Museums and Archaeological Sites Attendance has been producing results since 1970. The survey collects data from the Hellenic Organization of Cultural Resources Development (HOCRED), supervised by the Ministry of Culture and Sports, on the number of visitors and the receipts from the tickets sold in the Museums and Archaeological sites of the country. The corresponding data for the Acropolis Museum is available from December 2009 onwards.
Legal Framework	The survey is conducted since 1970 on a regular basis and it produces results on a monthly and yearly basis, in compliance with the Joint Ministerial Decision 15189/B379/73.
Reference Period	1/5/2021 έως 31/5/2021
Methodology and Definitions	The survey is conducted on a monthly basis from data mainly collected from the Hellenic Organization of Cultural Resources Development (HOCRED), supervised by the Ministry of Culture and Sports, on the number of visitors and the receipts from the tickets sold in the Museums and Archaeological sites of the Country. ELSTAT tabulates and presents the data for the whole of the Country, by month and by year. Number of flat rate tickets: From April 1999 onwards, in some museums and the nearby archaeological sites, in addition to the ordinary ticket, a new “flat rate ticket” was established, which is valid for both the museum and the nearby archaeological site. The total number of these flat rate tickets for May 2021 was 10,089 .
References	More information on the Survey on Museums and Archaeological Sites Attendance and detailed time series are available on: http://www.statistics.gr/en/statistics/-/publication/SCI21/