



HELLENIC REPUBLIC
HELLENIC STATISTICAL AUTHORITY

Piraeus, 30 December 2020

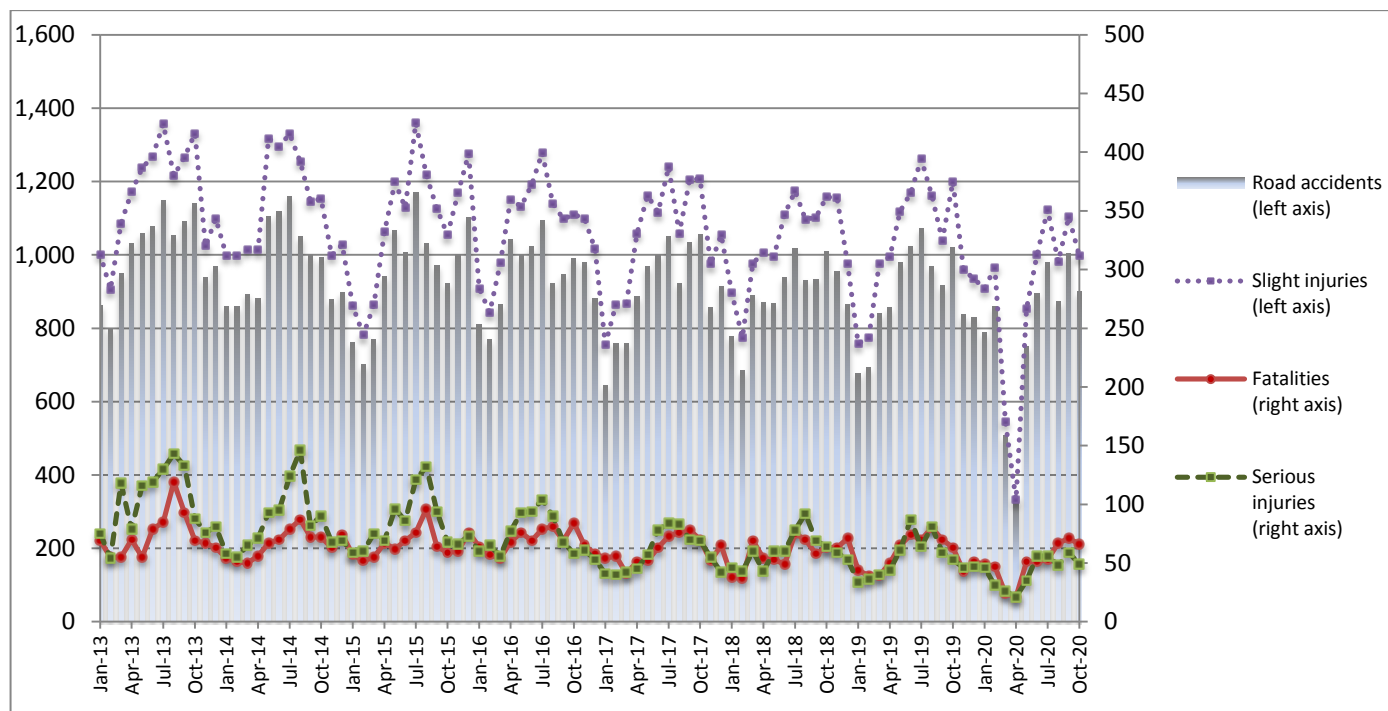
PRESS RELEASE

ROAD TRAFFIC ACCIDENTS: October 2020

The Hellenic Statistical Authority (ELSTAT) announces provisional¹ data from the survey on “Road Traffic Accidents” for October 2020. In particular, the road traffic accidents which occurred in Greece, resulting in death or injury, decreased by 11.9% in comparison with the corresponding month of 2019 (899 road accidents in October 2020, against 1,020 road accidents in October 2019).

The casualties of the injury-causing accidents that occurred in October 2020 were as follows: 66 deaths, 49 serious injuries and 997 slight injuries. In contrast, in October 2019 the corresponding figures were: 63 deaths, 53 serious injuries and 1,200 slight injuries. Therefore, road traffic accident casualties in October 2020 increased by 4.8% for deaths and decreased by 7.5% for serious injuries and by 16.9% for slight injuries.

**Graph 1: Road traffic accidents and casualties,
January 2013 - October 2020**



Provisional data for the period January 2020 – October 2020

Information on methodological issues:

Sectoral Statistics Division
Transport Statistics Section
P. Tzortzi, L. Miliara
Tel: +30 213 135 2187, +30 213 135 3095
Fax : +30 213 135 2757
e-mail: p.tzortzi@statistics.gr , l.miliara@statistics.gr

Information for data provision:

Tel: +30 213 135 2022, 2308, 2310
e-mail: data.dissem@statistics.gr

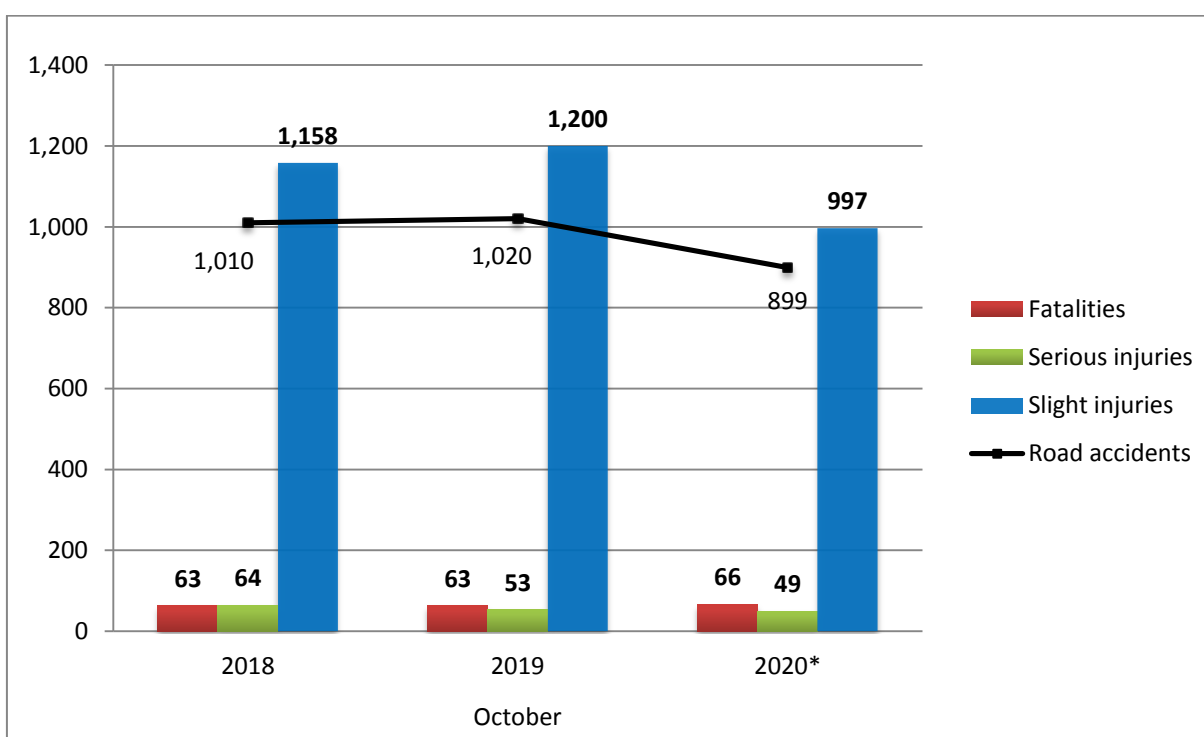
^[1] Data for the reference year is provisional until the finalization of the annual data, which takes place 10 months after the end of the reference year and is published in the corresponding press release of the following year. During these 10 months the provisional data is updated on the basis of the data of the Road Accident Forms of that year which is transmitted to ELSTAT by Police Authorities (see explanatory notes).

Table 1: Road traffic accidents and casualties, October 2018 - 2020*

	October				
	2018	2019	2019/2018 (%)	2020*	2020*/2019 (%)
Road accidents	1,010	1,020	1.0	899	-11.9
Fatalities	63	63	0.0	66	4.8
Total injuries	1,222	1,253	2.5	1,046	-16.5
Serious injuries	64	53	-17.2	49	-7.5
Slight injuries	1,158	1,200	3.6	997	-16.9

* Provisional data

Graph 2: Road traffic accidents and casualties, October 2018 - 2020*



* Provisional data

Table 2: Road traffic accidents and casualties, by region and department, October 2019 and 2020*

Region and department	Road accidents			Fatalities			Serious injuries			Slight injuries		
	2019	2020*	%	2019	2020*	%	2019	2020*	%	2019	2020*	%
Greece Total	1,020	899	-11.9	63	66	4.8	53	49	-7.5	1,200	997	-16.9
Anatoliki Makedonia and Thraki (East Macedonia and Thrace)	28	27	-3.6	1	1	0.0	0	5	-	32	31	-3.1
Drama	4	7	75.0	0	1		0	0		6	9	
Evros	4	4	0.0	0	0		0	1		4	4	
Kavala	9	8	-11.1	0	0		0	2		10	12	
Xanthi	4	3	-25.0	1	0		0	1		3	2	
Rodopi	7	5	-28.6	0	0		0	1		9	4	
Kentriki Makedonia (Central Macedonia)	158	155	-1.9	13	11	-15.4	3	2	-33.3	206	173	-16.0
Imathia	3	3	0.0	2	1		0	0		2	2	
Thessaloniki	135	135	0.0	8	3		2	2		169	158	
Kilkis	4	3	-25.0	0	0		0	0		6	4	
Pella	3	5	66.7	1	1		1	0		8	4	
Pieria	1	1	0.0	0	1		0	0		1	0	
Serres	5	2	-60.0	2	2		0	0		5	0	
Chalkidiki	7	6	-14.3	0	3		0	0		15	5	
Dytiki Makedonia (West Macedonia)	8	5	-37.5	1	2	100.0	2	0	-100.0	9	4	-55.6
Grevena	0	0	-	0	0		0	0		0	0	
Kastoria	1	2	100.0	0	1		0	0		2	2	
Kozani	7	3	-57.1	1	1		2	0		7	2	
Florina	0	0	-	0	0		0	0		0	0	
Ipeiros (Epirus)	8	9	12.5	1	3	200.0	3	1	-66.7	5	7	40.0
Arta	3	0	-100.0	0	0		1	0		2	0	
Thesprotia	2	3	50.0	1	1		0	0		1	4	
Ioannina	2	4	100.0	0	1		1	1		2	2	
Preveza	1	2	100.0	0	1		1	0		0	1	
Thessalia (Thessaly)	17	25	47.1	4	4	0.0	4	0	-100.0	22	32	45.5
Karditsa	7	7	0.0	3	1		0	0		7	12	
Larissa	4	8	100.0	0	0		1	0		9	10	
Magnissia	5	7	40.0	0	2		3	0		6	7	
Trikala	1	3	200.0	1	1		0	0		0	3	
Ionian Nisia (Ionian Islands)	13	5	-61.5	1	0	-100.0	3	0	-100.0	10	5	-50.0
Zakynthos	5	1	-80.0	0	0		0	0		5	1	
Kerkyra	6	2	-66.7	1	0		3	0		2	2	
Kefallinia	0	1	-	0	0		0	0		0	1	
Lefkada	2	1	-50.0	0	0		0	0		3	1	

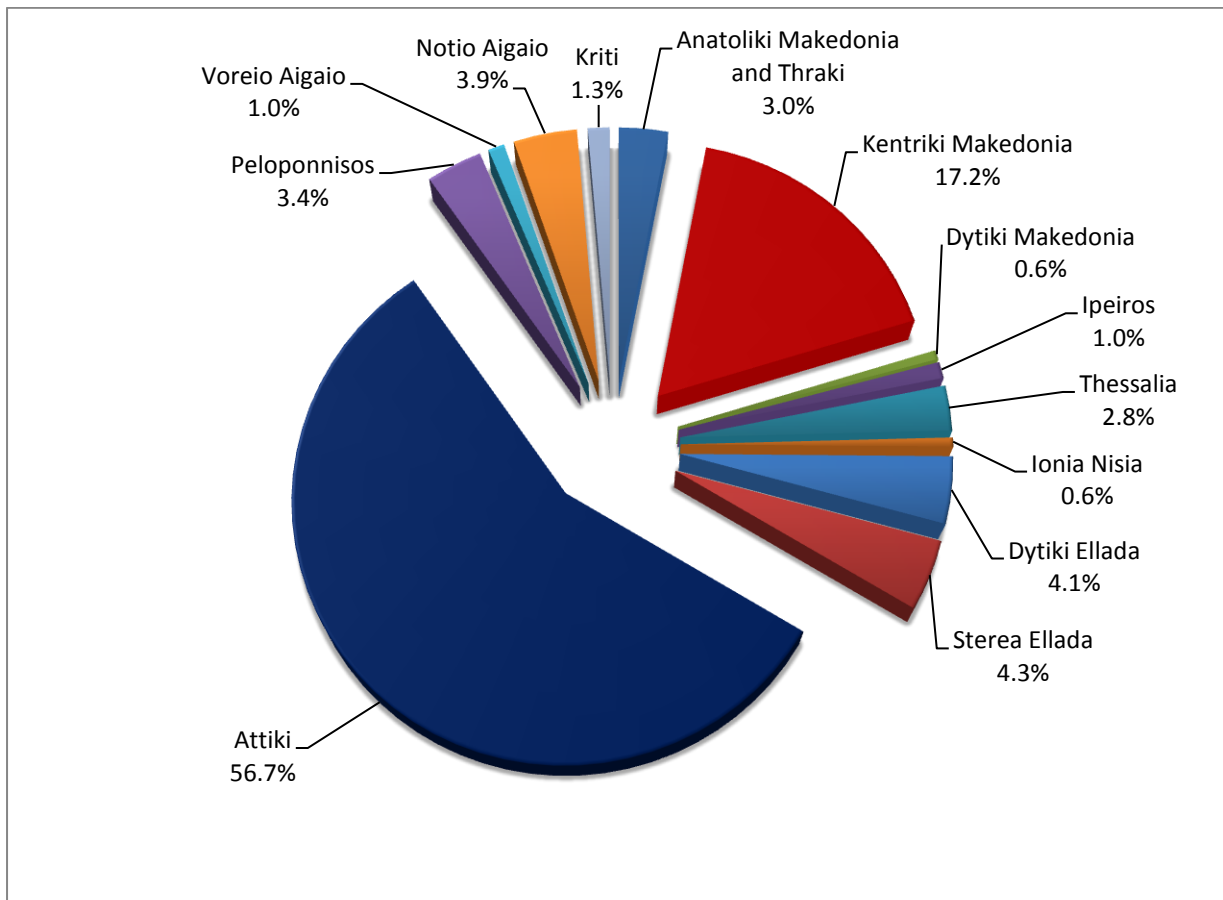
* Provisional data

Table 2: Road traffic accidents and casualties, by region and department, October 2019 and 2020* (Continued)

Region and department	Road accidents			Fatalities			Serious injuries			Slight injuries		
	2019	2020*	%	2019	2020*	%	2019	2020*	%	2019	2020*	%
Dytiki Ellada (West Greece)	48	37	-22.9	6	7	16.7	4	3	-25.0	51	39	-23.5
Etolia & Akarnania	22	13	-40.9	3	2		0	2		24	13	
Achaia	18	18	0.0	2	2		2	0		22	20	
Ilia	8	6	-25.0	1	3		2	1		5	6	
Sterea Ellada	40	39	-2.5	2	3	50.0	4	3	-25.0	49	48	-2.0
Viotia	3	8	166.7	1	1		0	0		3	10	
Evia	26	22	-15.4	1	0		2	3		29	24	
Evrytania	0	1	-	0	0		0	0		0	1	
Fthiotida	6	7	16.7	0	2		2	0		11	7	
Fokida	5	1	-80.0	0	0		0	0		6	6	
Attiki (Attica)	601	510	-15.1	18	23	27.8	16	22	37.5	703	567	-19.3
Peloponnisos (Peloponnese)	37	31	-16.2	9	6	-33.3	3	4	33.3	39	30	-23.1
Argolida	7	13	85.7	3	3		2	3		8	14	
Arkadia	6	1	-83.3	3	1		0	0		7	0	
Korinthia	16	12	-25.0	2	2		1	0		17	11	
Lakonia	3	0	-100.0	0	0		0	0		3	0	
Messinia	5	5	0.0	1	0		0	1		4	5	
Voreio Aigaio (North Aegean)	16	9	-43.8	0	0	-	1	1	0.0	20	11	-45.0
Lesvos	10	7	-30.0	0	0		0	1		12	9	
Samos	3	0	-100.0	0	0		1	0		3	0	
Chios	3	2	-33.3	0	0		0	0		5	2	
Notio Aigaio (South Aegean)	31	35	12.9	4	5	25.0	4	7	75.0	35	38	8.6
Dodekanissos	15	20	33.3	2	1		1	2		16	26	
Kyklades	16	15	-6.3	2	4		3	5		19	12	
Kriti (Crete)	15	12	-20.0	3	1	-66.7	6	1	-83.3	19	12	-36.8
Iraklio	4	7	75.0	0	0		2	1		9	7	
Lassithi	2	3	50.0	0	1		0	0		2	2	
Rethymno	4	0	-100.0	1	0		1	0		5	0	
Chania	5	2	-60.0	2	0		3	0		3	3	

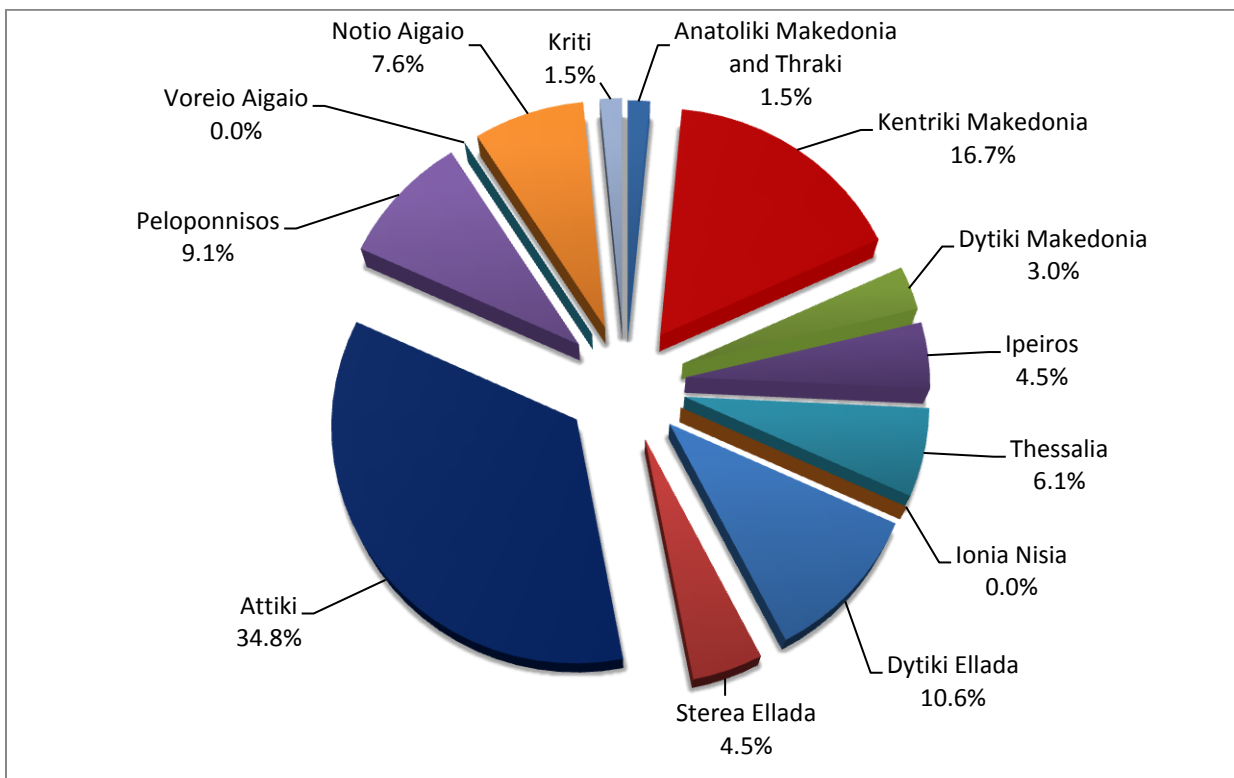
* Provisional data

Graph 3: Road traffic accidents by region, October 2020 *



* Provisional data

Graph 4: Fatalities by region, October 2020 *



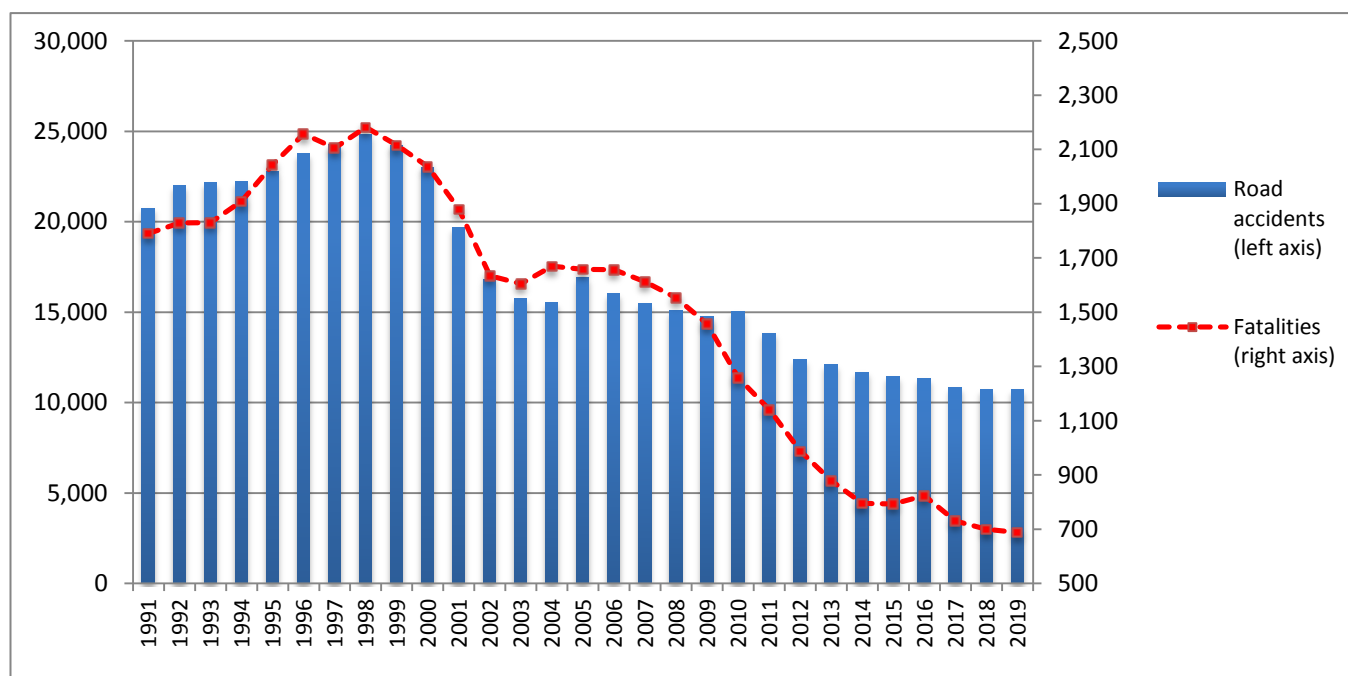
* Provisional data

Table 3: Road traffic accidents and casualties for the period January - October 2018, 2019 and 2020*

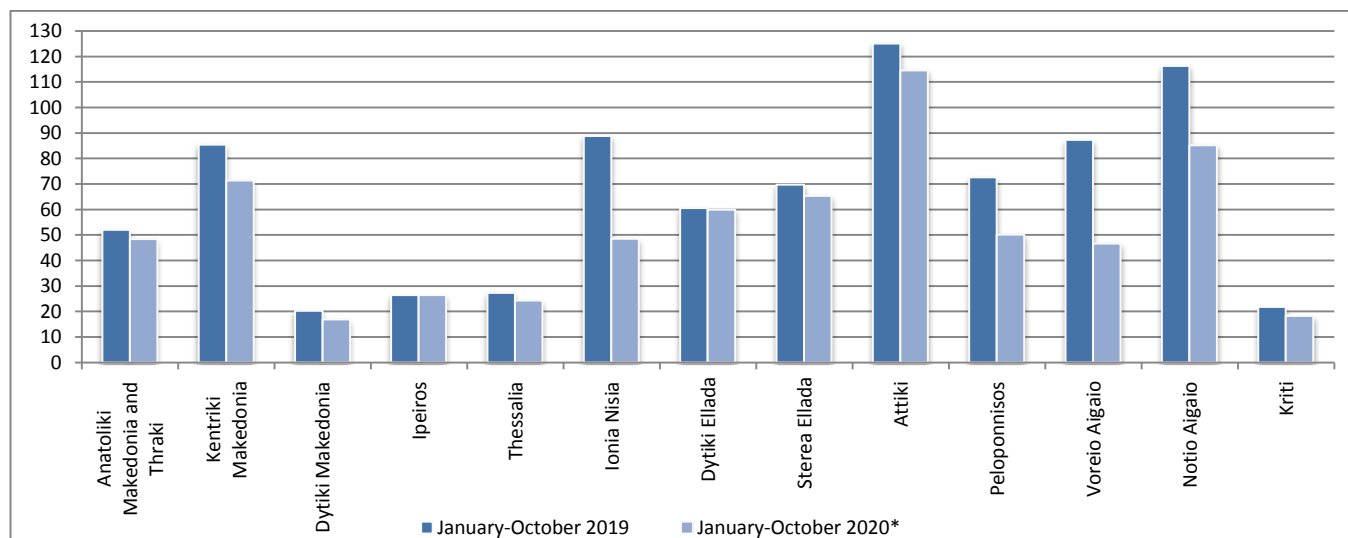
	2018		2019		2020 *
	January - October	Total year	January - October	Total year	January - October
Road Accidents	8,917	10,737	9,045	10,712	7,876
Annual Change (%)			1.4	-0.2	-12.9
Fatalities	566	700	594	688	500
Annual Change (%)			4.9	-1.7	-15.8
Serious injuries	615	727	559	652	427
Annual Change (%)			-9.1	-10.3	-23.6
Slight injuries	10,292	12,422	10,456	12,350	8,811
Annual Change (%)			1.6	-0.6	-15.7

* Provisional data

Graph 5: Total road traffic accidents and fatalities, 1991-2019

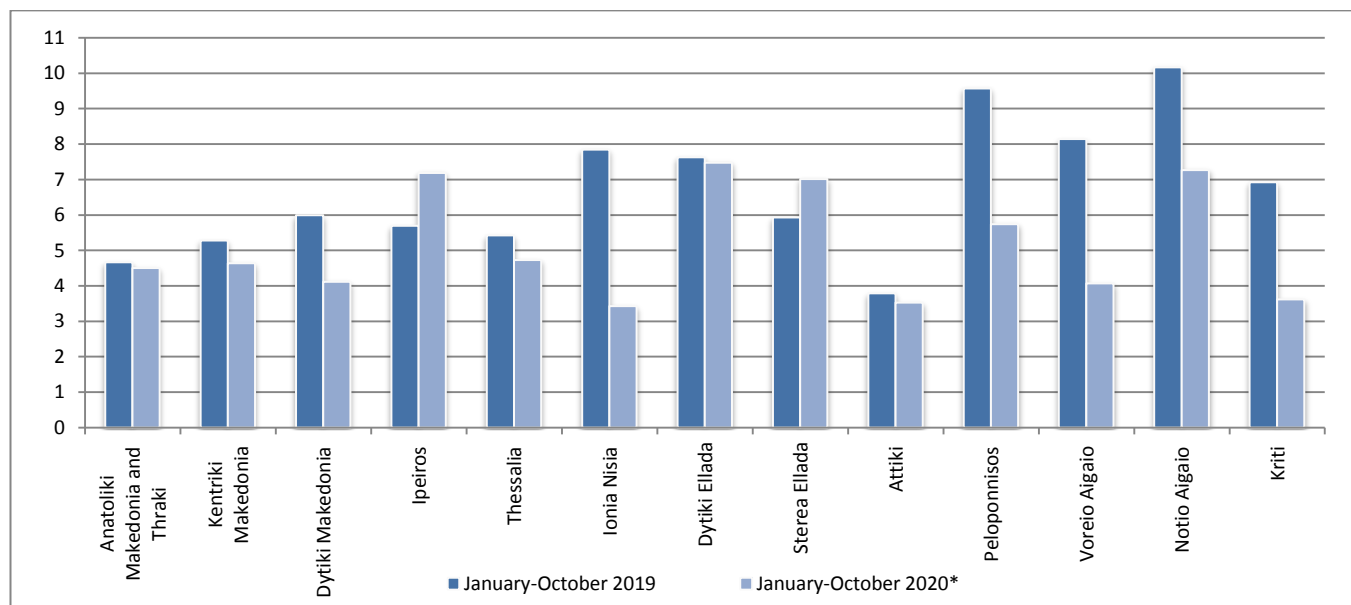


Graph 6: Road traffic accidents per 100,000 inhabitants

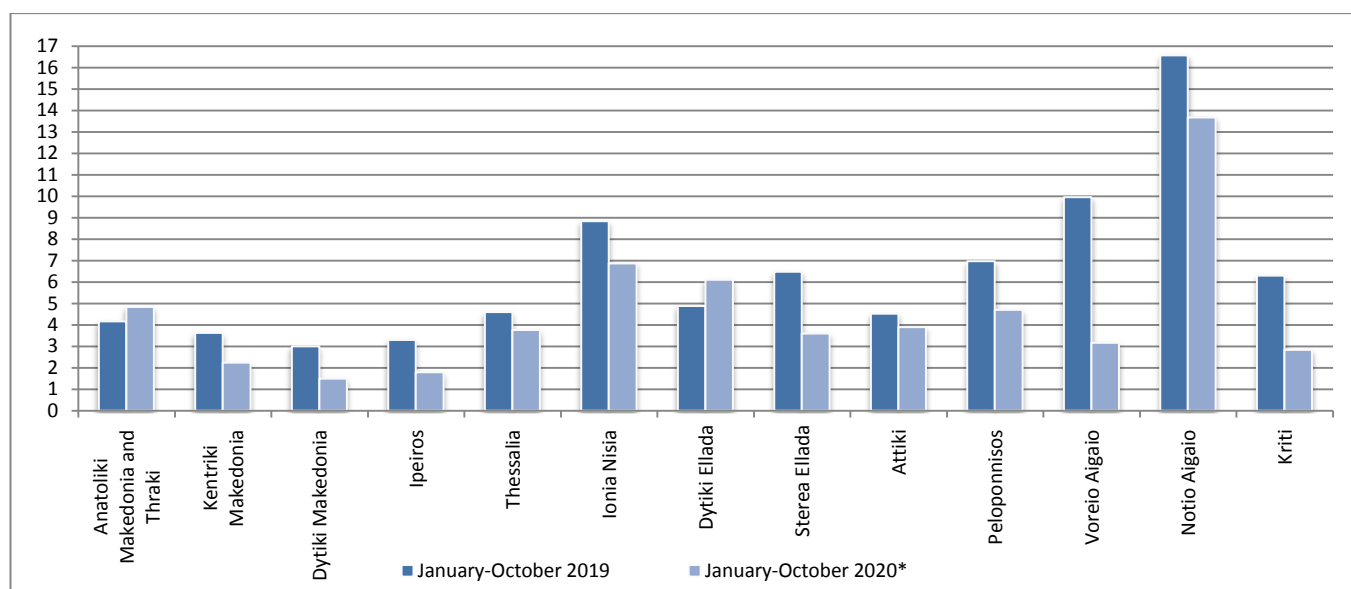


* Provisional data

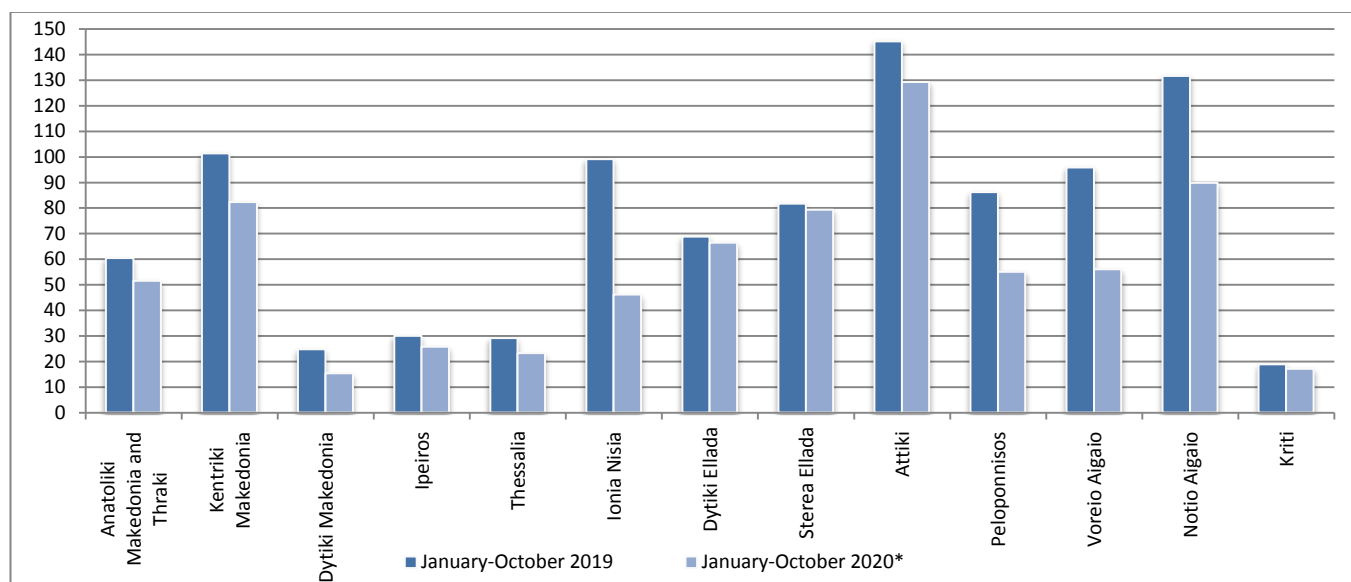
Graph 7: Fatalities per 100,000 inhabitants



Graph 8: Serious injuries per 100,000 inhabitants



Graph 9: Slight injuries per 100,000 inhabitants



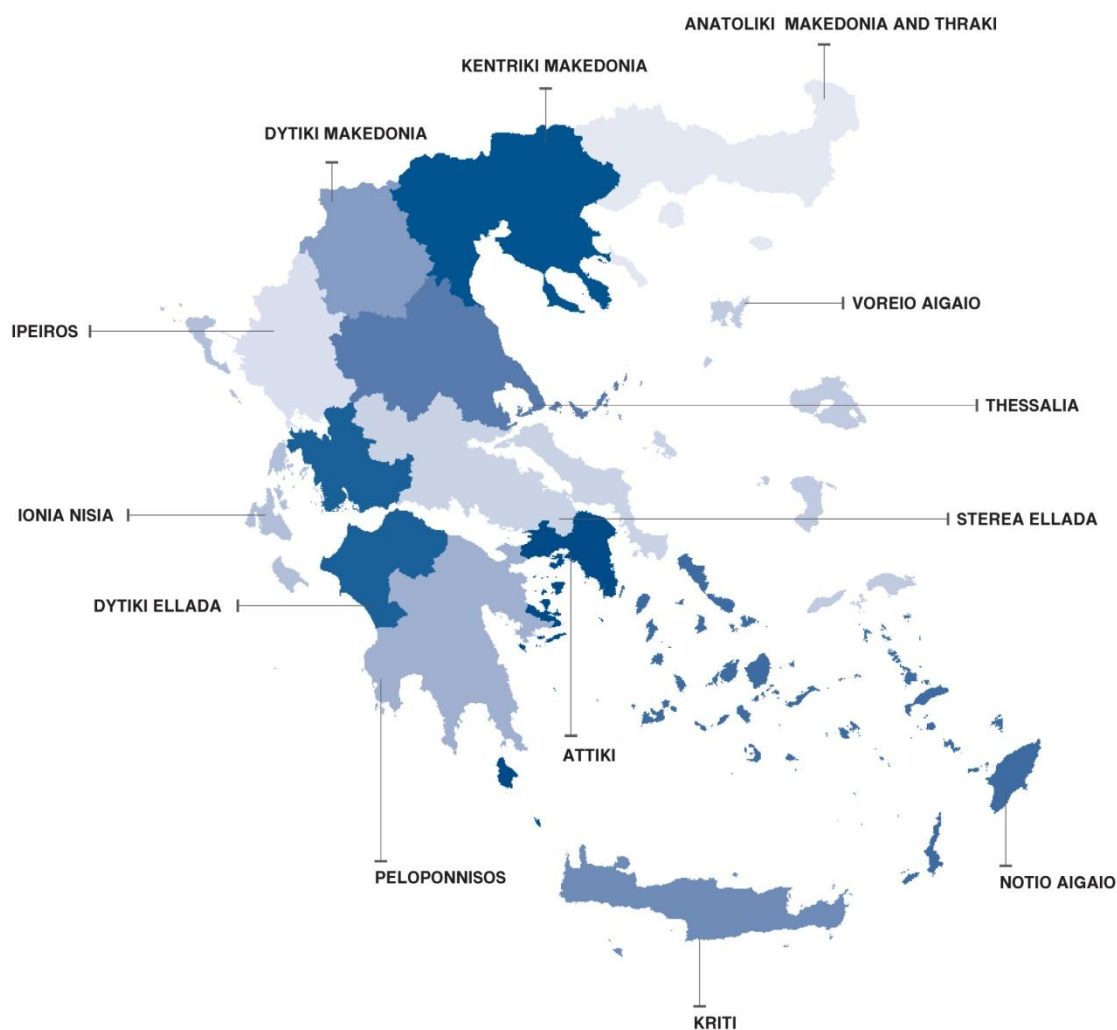
* Provisional data

EXPLANATORY NOTES

Survey on Road Traffic Accidents The Survey on Road Traffic Accidents is conducted on a monthly basis and it records, for each region (see map) and department of Greece and for each month separately, the number of accidents resulting in death or injury, as well as the number of persons injured by categories (drivers, passengers, pedestrians).

On a yearly basis, road traffic accidents are further analyzed. The competent agencies for filling in/collecting the forms on road accidents are the local Police Authorities and the local Port Authorities of Greece.

The lower level of analysis for the place where an injury road accident occurred is the settlement. Data are collected on a monthly basis. The main variables are the following: place of accident, kind of road, casualties, conditions of road surface and type of road.



Legal basis The Survey on Road Traffic Accidents is governed by Council Decision 93/704 of the European Community.

Reference period Monthly.

Availability of data Provisional data are available 2 months after the reference month.
Final data are available 10 months after the reference year.

Definitions **Road accident** (injury accident): Any accident involving at least one road motor vehicle in motion on a public road or square to which the public has access (excluding yards, industrial sites or vehicle depot of public transport enterprises), resulting in at least one injured or killed person. Accidents with only material damages are not included.

Fatality (Death): Any person killed immediately or dying within 30 days as a result of an injury accident (This national definition applies since 01.01.1996)

Person injured: Any person who sustained an injury as result of an injury accident, and who normally needs medical treatment.

Serious injury: Any person who sustained an injury as result of an injury accident, such as brain damages, mutilation, multiple injuries, which may result in lack of awareness or which are life-threatening.

Slight injury: Any person injured who sustained minor and not life-threatening injuries.

Vehicle: Include motor vehicles, trolleybuses, motorcycles, bicycles, motorbikes, agricultural and road making machines, animal and hand-drawn vehicles. Railway vehicles are excluded, unless the road accident involves at least one of the aforementioned types of vehicles and therefore, railway vehicles are considered vehicles.

Methodology The forms of the survey are filled in by the local Police Authorities and the local Port Authorities as well.

References More information about Road Traffic Accidents is available on ELSTAT's website and more specifically at the link: <https://www.statistics.gr/en/statistics/-/publication/SDT03/->.