



ISSUING OF MOTOR VEHICLE LICENSES: JANUARY 2026

The Hellenic Statistical Authority announces that in January 2026, 20,874 road motor cars (both new and used from abroad) were put into circulation for the first time, recording a 4.1% decrease compared with the corresponding month of 2025 when the number of road motor cars was 21,762. In January 2025, a 3.4% decrease had been observed in comparison with the corresponding month of 2024 (Table 1, Graphs 1,2,3,5). A total number of 10,807 new cars were put into circulation in January 2026 compared with 11,563 in January 2025, recording a 6.5% decrease.

The new motorcycles over 50cc (both new and used from abroad) that were put into circulation for the first time in January 2026 amounted to 4,702, against 3,684 in 2025, thus recording a 27.6% increase. In January 2025, a 25.6% decrease had been observed in comparison with the corresponding month of 2024 (Table 1, Graph 4). Out of the above motorcycles 4,387 were new, while the corresponding figure in January 2025 was 3,390, recording a 29.4% increase.

Information on methodological issues:

Sectoral Statistics Division

Transport Statistics Section

Elpida Kleftogianni, Konstantinos Menexes

Tel: +30 213 135 3087, +30 213 135 3055

e-mail: e.kleftogianni@statistics.gr, k.menexes@statistics.gr

Information for data provision:

Tel: +30 213 135 2022

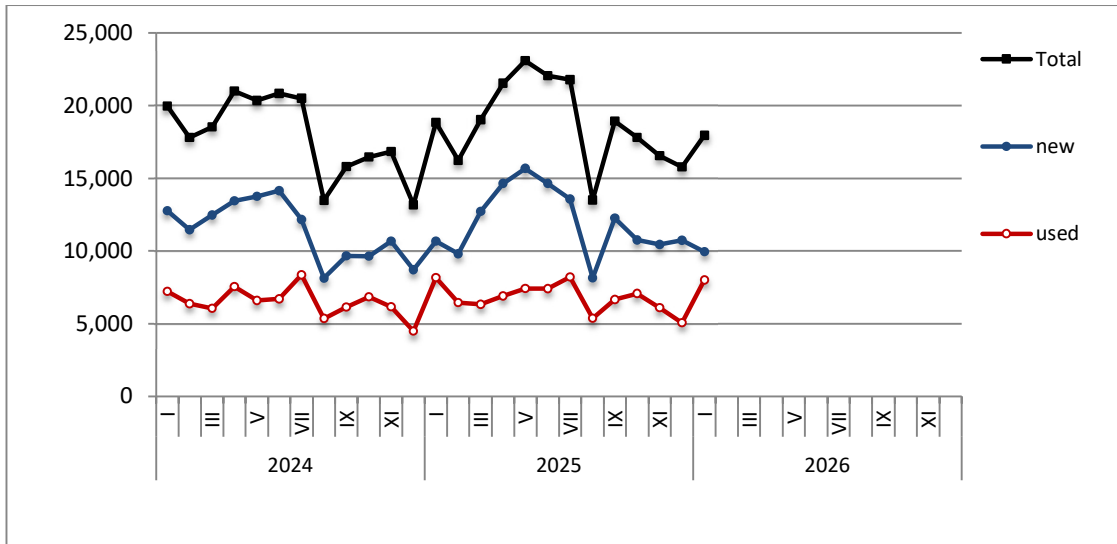
e-mail: data.dissem@statistics.gr

Table 1. Road motor vehicles, both new and used, put into circulation for the first time in Greece: January 2024 - 2026															
Category of Road Motor Vehicles	January									Change (%)					
	2024			2025			2026			2025/2024			2026/2025		
	Total	New	Used	Total	New	Used	Total	New	Used	Total	New	Used	Total	New	Used
Greece, total															
Road Motor Vehicles, total	27,492	18,347	9,145	25,446	14,953	10,493	25,576	15,194	10,382	-7.4%	-18.5%	14.7%	0.5%	1.6%	-1.1%
1. Road motor cars	22,539	13,708	8,831	21,762	11,563	10,199	20,874	10,807	10,067	-3.4%	-15.6%	15.5%	-4.1%	-6.5%	-1.3%
Passenger Cars	19,966	12,762	7,204	18,837	10,662	8,175	17,954	9,946	8,008	-5.7%	-16.5%	13.5%	-4.7%	-6.7%	-2.0%
Buses	78	32	46	208	133	75	148	98	50	166.7%	315.6%	63.0%	-28.8%	-26.3%	-33.3%
Lorries	2,495	914	1,581	2,717	768	1,949	2,772	763	2,009	8.9%	-16.0%	23.3%	2.0%	-0.7%	3.1%
2. Motorcycles > 50 cc	4,953	4,639	314	3,684	3,390	294	4,702	4,387	315	-25.6%	-26.9%	-6.4%	27.6%	29.4%	7.1%
Prefecture of Attica															
Road Motor Vehicles, total	15,485	11,961	3,524	13,737	10,065	3,672	13,783	10,198	3,585	-11.3%	-15.9%	4.2%	0.3%	1.3%	-2.4%
1. Road motor cars	12,834	9,443	3,391	11,794	8,216	3,578	10,871	7,383	3,488	-8.1%	-13.0%	5.5%	-7.8%	-10.1%	-2.5%
Passenger Cars	11,784	8,845	2,939	10,604	7,574	3,030	9,783	6,795	2,988	-10.0%	-14.4%	3.1%	-7.7%	-10.3%	-1.4%
Buses	43	23	20	149	118	31	92	74	18	246.5%	413.0%	55.0%	-38.3%	-37.3%	-41.9%
Lorries	1,007	575	432	1,041	524	517	996	514	482	3.4%	-8.9%	19.7%	-4.3%	-1.9%	-6.8%
2. Motorcycles > 50 cc	2,651	2,518	133	1,943	1,849	94	2,912	2,815	97	-26.7%	-26.6%	-29.3%	49.9%	52.2%	3.2%

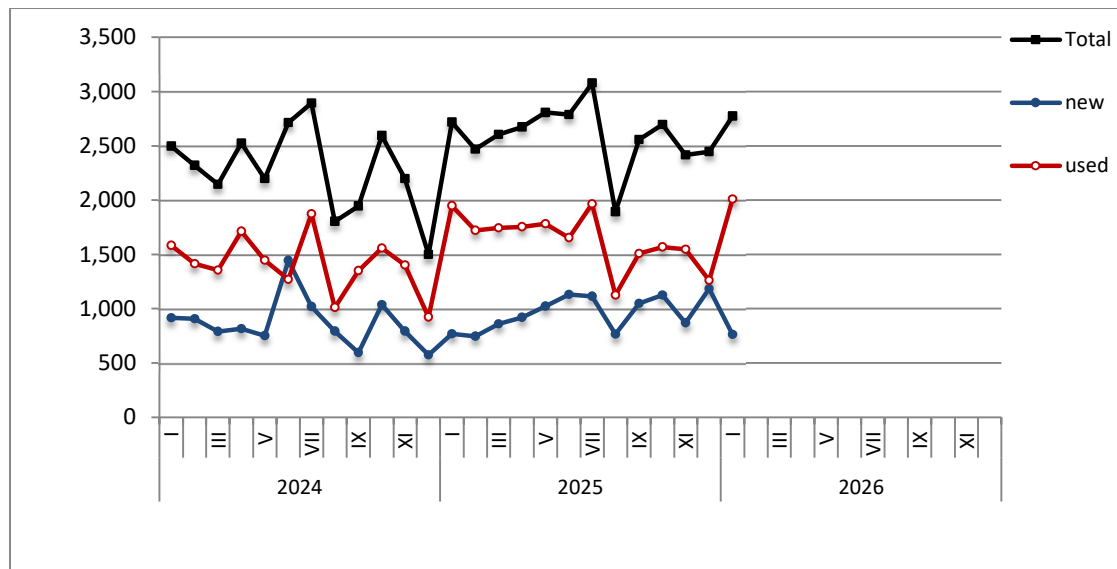
Table 2. Road motor vehicles, both new and used, put into circulation for the first time in Greece: February 2024 - January 2026

Category of Road Motor Vehicles	Average Feb. 2024 - Jan 2025			Average Feb. 2025 - Jan 2026			Change (%)		
							Average Feb. 2025 - Jan 2026 / Average Feb. 2024 - Jan 2025		
	Total	New	Used	Total	New	Used	Total	New	Used
Greece, total									
Road Motor Vehicles, total	26,971	18,572	8,399	28,470	19,724	8,746	5.6%	6.2%	4.1%
1. Road motor cars	20,252	12,178	8,074	21,437	12,984	8,453	5.9%	6.6%	4.7%
Passenger Cars	17,803	11,240	6,563	18,690	11,943	6,747	5.0%	6.3%	2.8%
Buses	153	80	73	148	78	70	-3.3%	-2.5%	-4.1%
Lorries	2,296	858	1,438	2,599	963	1,636	13.2%	12.2%	13.8%
2. Motorcycles > 50 cc	6,719	6,394	325	7,033	6,740	293	4.7%	5.4%	-9.8%

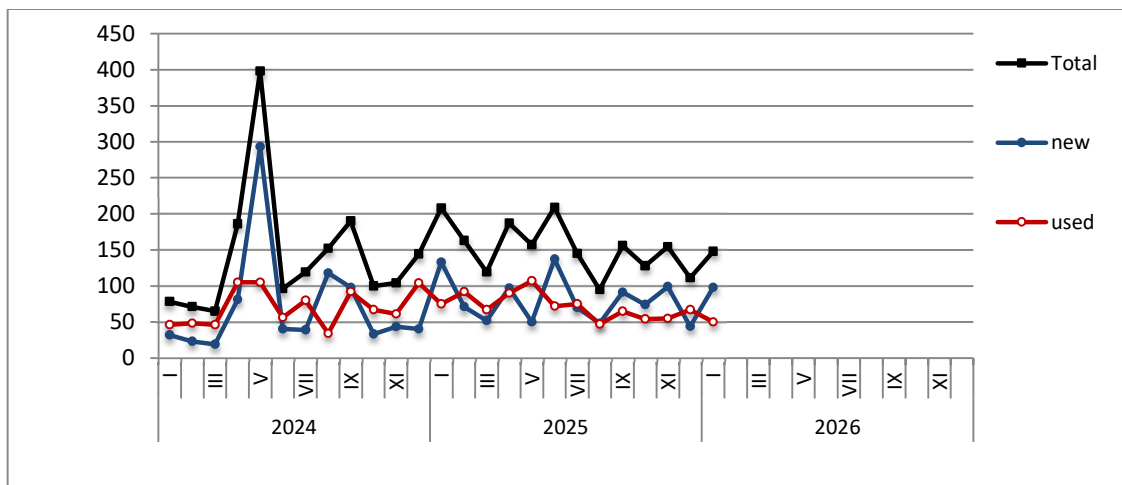
Graph 1: Passenger Cars (January 2024 - January 2026)



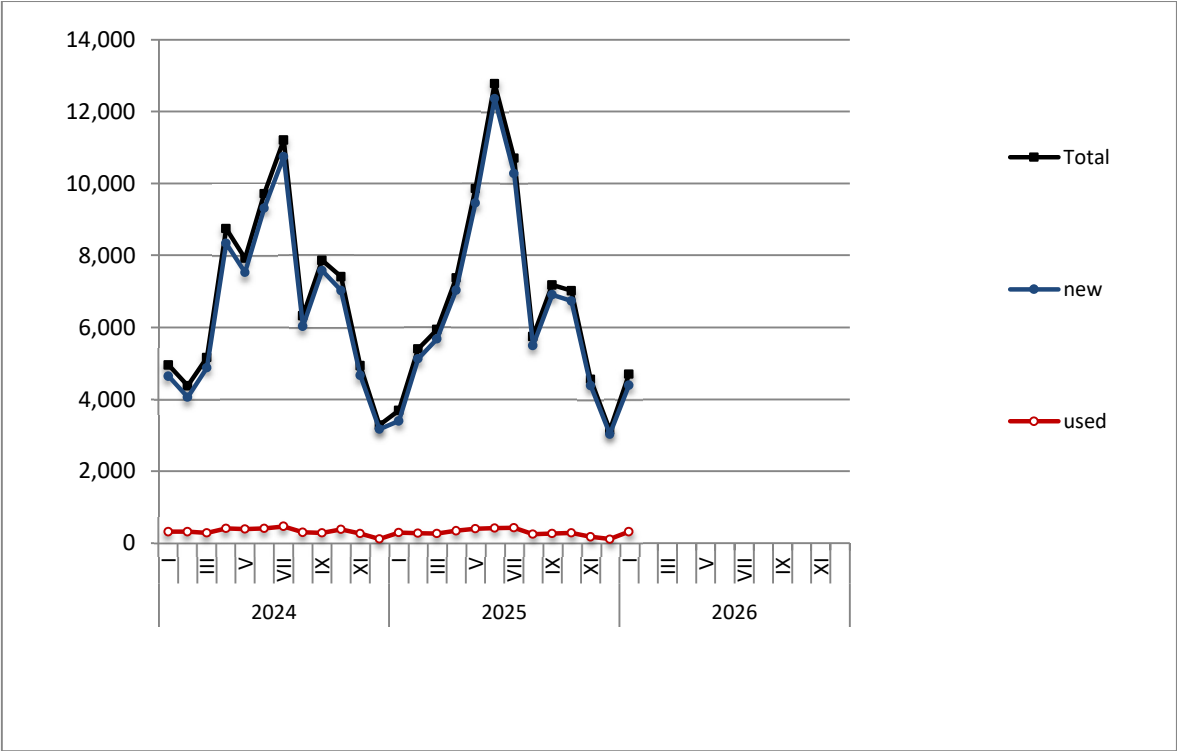
Graph 2: Lorries (January 2024 - January 2026)



Graph 3: Buses (January 2024 - January 2026)



Graph 4: Motorcycles (January 2024 - January 2026)



Graph 5: New Registrations of Motor Vehicles (January 2026)

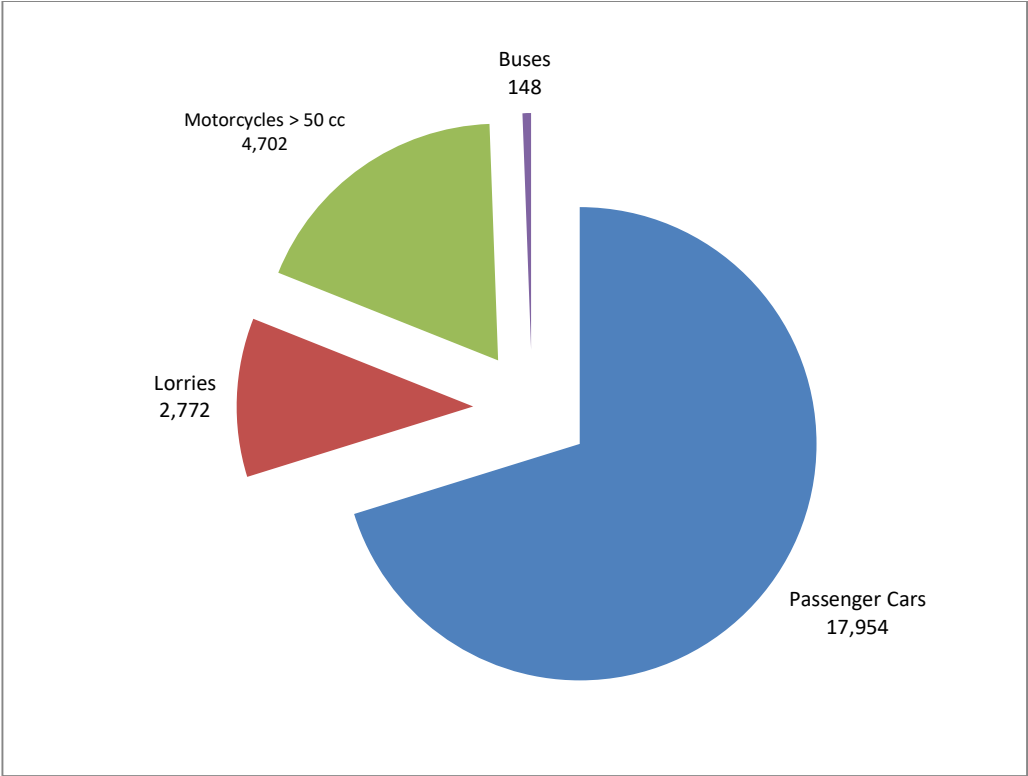


Table 3
Sales of new and used passenger cars by make: January 2026

Make	Passenger cars	
	January	
	new	used
ALFA ROMEO	89	32
ALPINA	1	-
ALPINE	-	1
ASTON MARTIN	-	1
AUDI	430	161
BMW	506	289
BURSTNER	-	3
BYD	146	1
CAPRON	-	5
CARTHAGO	-	1
CHAUSSON	-	1
CHERY	47	-
CHERY, EBRO	198	-
CHERY, EXEED, FOWNIX, CHIREY, CHERY EXEED, OMODA	4	-
CHERY, OMODA	7	-
CHEVROLET	-	8
CHEVROLET, GMC, HOLDEN, DAEWOO	-	2
CITROEN	702	423
CITROEN / DS	1	179
CUPRA	89	6
CITROEN	119	-
DACIA	264	193
DAIHATSU	-	1
DEEPAL	2	-
DEEPAL, CHANGAN	3	-
DETHLEFFS	-	2
DFSK, SERES, SOKON, FENGON	8	-
DONGFENG	2	-
DS	11	13
EXEED, CHERY EXEED, OMODA, EXLANTIX, XTRIM	4	-
FERRARI	-	5
FIAT	244	223
FORD	172	555
FORD ²	-	1
GAC, AION	17	-
GEELY	34	-
GLOBE TRAVELLER	-	1
HONDA	24	86
HYUNDAI	559	730
IVECO S.P.A / LAIKA CARAVANS	-	1
JAECOO, OMODA, CHERY, FOWNIX, LUCANO	8	-
JAGUAR	-	29
JEEP	147	96
KIA	180	178
KNAUS	-	1
LADA	-	3
LANCIA	-	4
LAND ROVER	20	98

Table 3 (cont)
Sales of new and used passenger cars by make: January 2026

Make	Passenger cars	
	January	
	new	used
LEAPMOTOR	16	-
LEXUS	45	5
LINCOLN	-	1
LYNK&CO	7	5
MASERATI	3	2
MAZDA	61	47
MERCEDES	125	713
MERCEDES ²	1	-
MG	20	2
MG, ROEWE	483	4
MINI	163	49
MITSUBISHI	2	115
MOKE	1	-
NIO	11	-
NISSAN	150	558
OPEL	887	481
PEUGEOT	830	869
PEUGEOT ²	1	-
PORSCHE	28	63
RANGE ROVER	-	4
RENAULT	209	618
SEAT	52	44
SKODA	295	73
SMART	7	95
SRM, SWM, SHINERAY, KMC	7	-
SSANGYONG	-	2
SSANGYONG, KG MOBILITY	7	-
SUBARU	9	13
SUZUKI	516	139
TESLA	33	14
TOYOTA	1,508	439
TRIGANO	-	1
VOLKSWAGEN	313	296
VOLVO	85	23
VOYAH	1	-
XPENG	20	-
ZEEKR	7	-
ZEEKR, GEELY	5	-
TOTAL	9,946	8,008

1 : With 2nd/3rd stage manufacturer in Greece.

2 : With 2nd/3rd stage manufacturer abroad.

Graph 6. Sales of new passenger cars by make (January 2026)

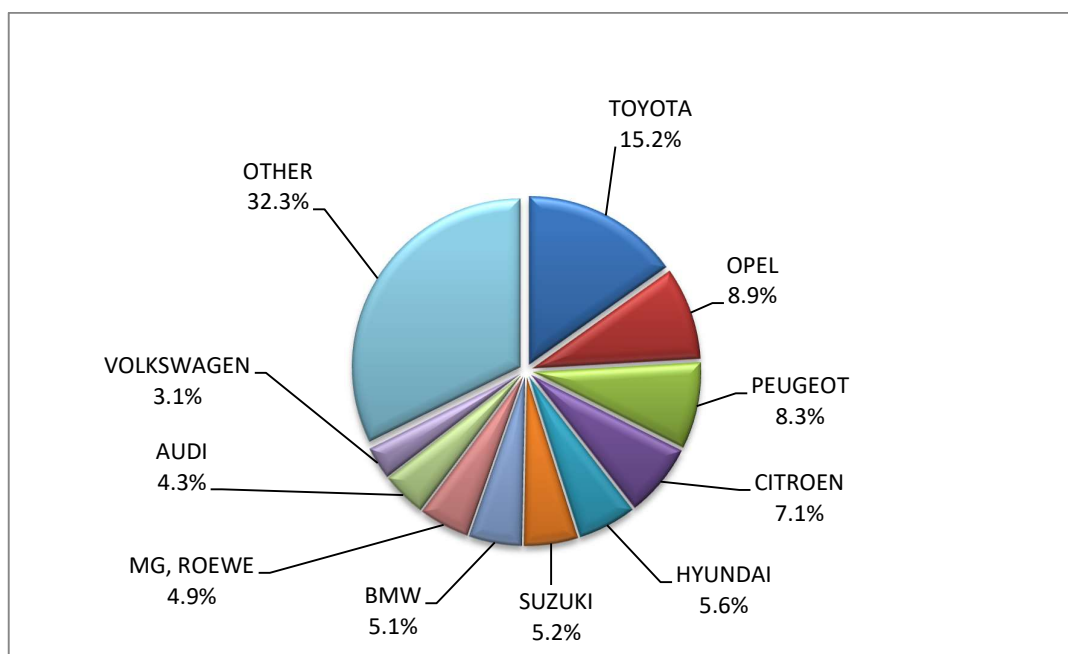


Table 4
Sales of new and used lorries by make: January 2026

Make	Lorries	
	January	
	new	used
BYD	2	3
CITROEN	30	69
DACIA	2	8
DAF	2	71
ESAGONO ENERGIA	2	-
FARIZON, LEVC	1	-
FCA US LLC	-	1
FIAT	57	124
FIAT-IVECO	-	3
FORD	155	369
FORD ¹	-	2
FORD ²	1	-
FOTON	3	-
FUSO	-	3
HUMBAUR GMBH	-	1
HYUNDAI	-	2
ISUZU	12	25
IVECO	1	45
IVECO ¹	3	-
IVECO MAGIRUS	-	2
JEEP	-	2
KIA	-	2
MAN	2	139
MAN ¹	1	-

Table 4 (cont)
Sales of new and used lorries by make: January 2026

Make	Lorries	
	January	
	new	used
MAN ²	10	-
MAXUS	1	-
MAXUS, LDV	8	1
MERCEDES	9	439
MERCEDES 1	2	6
MERCEDES 2	2	1
MITSUBISHI	-	30
MITSUBISHI ¹	2	2
MITSUBISHI FUSO	-	4
MITSUBISHI FUSO ¹	4	1
MITSUBISHI FUSO ²	1	2
NISSAN	2	58
OAF	-	1
OPEL	50	90
PEUGEOT	103	72
PFAU	-	1
PIAGGIO	-	2
RENAULT	1	124
SCANIA	9	62
SSANGYONG, KG MOBILITY	9	-
TOYOTA	209	62
TOYOTA ¹	12	-
VICTORY	1	-
VOLKSWAGEN	40	76
VOLVO	12	104
VOLVO ¹	2	-
TOTAL	763	2,009

1 : With 2nd/3rd stage manufacturer in Greece.

2 : With 2nd/3rd stage manufacturer abroad.

Graph 7. Sales of new lorries by make (January 2026)

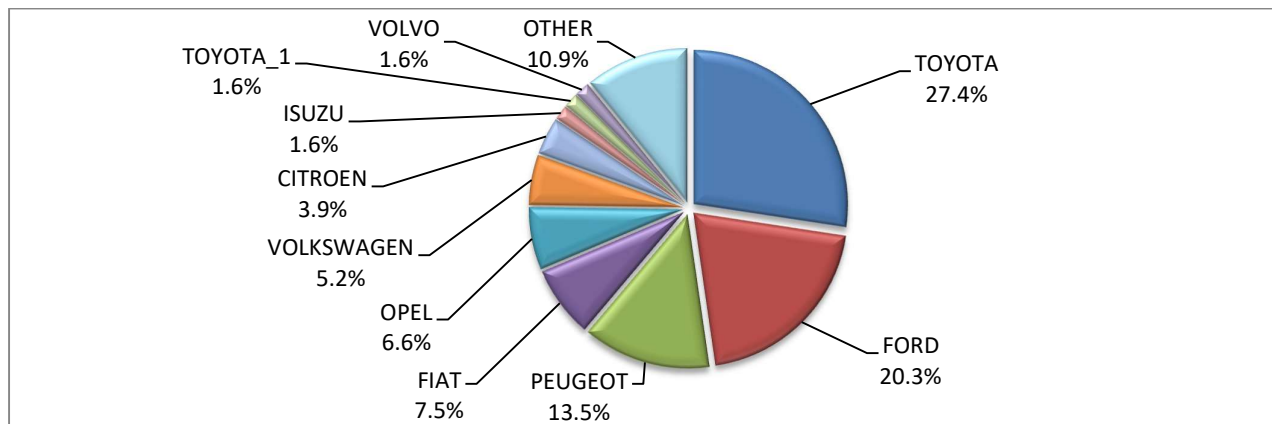


Table 5
Sales of new and used buses by make: January 2026

Make	Buses	
	January	
	new	used
BOVA	-	5
FORD	5	2
HIGER	10	-
IRISBUS	-	1
IVECO	-	1
KARSAN	1	-
KING LONG, RHODIUM	1	-
MAN	4	5
MENARINIBUS	44	-
MERCEDES	4	28
MERCEDES ¹	22	-
OTOKAR	-	1
SETRA	1	4
TEMSA	6	2
VAN HOOL	-	1
TOTAL	98	50

1 : With 2nd/3rd stage manufacturer in Greece.

2 : With 2nd/3rd stage manufacturer abroad.

Table 6
Sales of new and used motorcycles by make or manufacturer: January 2026

Make	Motorcycles	
	January	
	new	used
APRILIA	32	1
ARIIC, JINLANG, KEEWAY, ARORA, KL, UM	5	-
ASUS, Joyrace, Maxon, Gineva Moto, Berini, ROMET MOTORS, ROUTER, ZIPP, TOROS, LuXXon, Motobi, Rivero	13	-
BAJAJ	1	-
BASHAN, AMGroup, AMGroup Bike, DON, IRBIS, WORKER BEAR, Nomik ATV 2	1	-
BAW, NIEVE, RELIVE, ALLVIEW, Yunlong Motors	1	-
BENDA	-	1
BENELLI	14	1
BETA	10	2
BMW	93	65
BONTU	1	-
BONTU, BENTU	2	-
BRIXTON	4	-
BRP	1	-
CFMOTO	192	-
CFMOTO, ZEEHO	9	-

Table 6 (cont)
Sales of new and used motorcycles by make or manufacturer: January 2026

Make	Motorcycles	
	January	
	new	used
DAYANG, DAYTONA MOTORS, NIPPONIA, DYMOTO, VEEROAD, EVO MOTORS, MH MOTORCYCLES, FKM, FKMOTORS	1	-
DAYANG, DAYTONA MOTORS, NIPPONIA, KUBA, VEEROAD, SUMCO, CETUR, RUTEC	27	-
DAYANG, DAYTONA MOTORS, NIPPONIA, VEEROAD, DOCKER, RKS, LUOJIA	10	-
DAYANG, DAYTONA MOTORS, NIPPONIA, VEEROAD, RUTEC, CETUR, SALCANO, LUOJIA, GA CE LA, HIGHLAND, NORTH	95	-
DAYANG, DYMOTO, DAYTONA MOTORS, NIPPONIA, MH MOTORCYCLES, ORCAL, SUMCO, KUBA, RKS, RUTEC, AJS	24	-
DAYANG, ECOCREMO, ECOOTER, ECOOTOR, AGM, ORCAL, SUMCO	1	-
DONGBEN, GANCIN, DIRONG, KRAL	3	-
DOOHAN, TRINITY, PINK, DOUHA, CECOTEC	1	-
DUCATI	8	9
EAGLE	-	1
EASYCOOL, HECHHI, HURBA, Mitt, Blu:s, Luxxon, ROMET, VORTEX By Gingabike	1	-
ECOSHIFT	91	-
EFUN, ZAP,FRISON,easy-Watts	3	-
EMBUGGY, EVANGEL, The Original BeachBuggy, Beach Buggy	1	-
GAS GAS	1	1
GOUPIL, MEGA, POLARIS, GEM	1	-
GPX	2	-
HAOJIN, LETBE, KUBA, RKS, SKYJET	5	-
HARLEY DAVIDSON	7	18
HONDA	878	46
HUSQVARNA	2	8
INDIAN MOTORCYCLE	1	-
JIAJUE, Joyrace, MAXON, Gineva Moto, ASUS, TURBHO, BTC, AGM, ROMET MOTORS, ROUTER, ZIPP, TOROS	25	-
JNEN, JUNENG, ZIPP, MOTORAN, HORS, FLEX TECH, ALPHA-MOBIL, ROUTER, PEDA MOTOR, PEDA, APACHI, ARORA	12	-
JNEN, JUNENG, ZIPP, MOTORAN, HORS, FLEX TECH, RAZZO, TOROS, ONE, JUNAK	1	-
JNEN, JUNENG, ZIPP, MOTORAN, ONE, RAZZO, FLEX TECH, TOROS, JUNAK, TURBHO, PEZAL, ALPHA-MOBIL	14	-
JNEN, JUNENG, ZIPP, MOTORAN, PUZEY, ALPHA-MOBIL, HORS, ROMET, JST, JMT, PEDA MOTOR, PEDA, APACHI	4	-
KAMAX	1	-
KAWASAKI	13	7
KEEWAY	12	-
KEEWAY, LONGJIA	1	-
KEEWAY, ORCAL, NECO, ALFASCOOTERS	6	-
KEEWAY, RKS, KUBA, SKYJET, STELS,MORBIDELLI	20	-
KTM	26	35
KYMCO	60	15
LETBE, HAOJIN, KUBA, RKS, SKYJET, RKS LETBE	9	-
LETBE, RKS, RKS LETBE, HAOJIN, KUBA, SKYJET	5	-
LEXMOTO, ROMET, NECO, LUXXON, PRIKE, MAXON	33	-
LIFAN, QIPAI, SKYGO, TAKTAS, TAKTAS MOTOR	5	-
LOJO, RAINWOLL	1	-
LONCIN, KUBA, RKS, ITALIKA, SUNRACE, SKY, MALAGUTI, SUPERBIKE, ROCKET, NOVELBAT, TIGERMOTO, GREEN	1	-
LONCIN, VOGUE, KUBA, RKS , ITALIKA, SUNRACE, SKY, MALAGUTI, SUPERBIKE, ROCKET, NOVELBAT, TIGREMOTO, GREEN	-	1

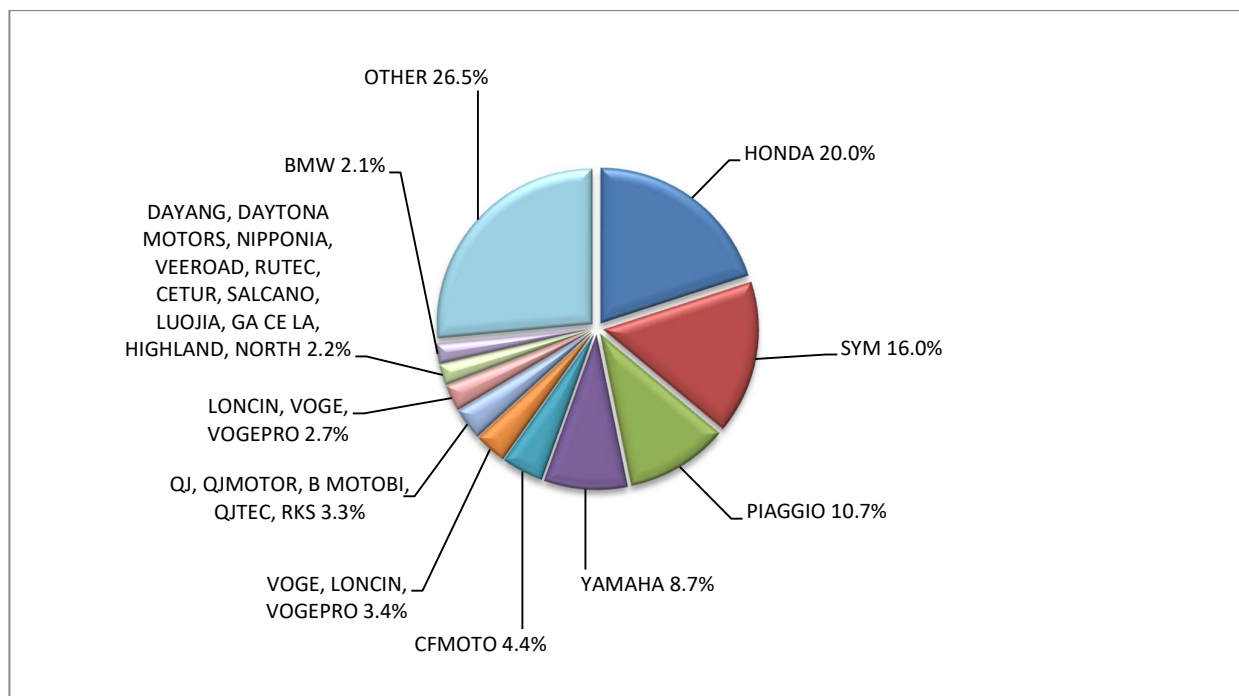
Table 6 (cont)
Sales of new and used motorcycles by make or manufacturer: January 2026

Make	Motorcycles	
	January	
	new	used
LONGCIN, VOGÉ, VOGÉPRO	120	-
LONGJIA, ORCAL, NECO, ALFASCOOTERS, VGA, ROMET MOTORS, BARTON MOTORS, OVER, CAROLYN, KANUNI, BTC	2	-
LONGJIA, ORCAL, NECO, VGA, ROMET MOTORS, DRAX, MONDIAL, JUNAK, ONLINE, MOTOWELL, JORDON, GABELLI	19	-
LONGJIA, VICTORIA, VICTORIA MOTORRAD, ORCAL, NECO, VGA, BTC, ALFASCOOTERS	65	-
LONGJIA, Zündapp, VGA, NECO, BTC, AGM, ALFASCOOTERS, ROMET MOTORS, Kudaki, BARTON MOTORS, OVER BIKES	2	-
LVNENG	1	-
LONGJIA, ZUNDAPP, VGA, NECO, BTC, ALFASCOOTERS, ROMET MOTORS	1	-
MACBOR, COLOVE, DAYTONA MOTORS, ZF-KY, online, KOVE	34	-
MALAGUTI	26	-
MBP, MORBIDELLI, KEEWAY, KUBA, RKS, STELS	11	-
MGK HM	47	-
MORBIDELLI, KEEWAY, MBP, STELS, RKS	18	-
MORBIDELLI, MBP, STELS, RKS	1	-
MOTO GUZZI	6	-
MOTO MORINI	2	-
MURTAS, VELIMOTOR, RONGJUE, PINK, BR SPORT, INVICTA ELECTRIC	1	-
MV AGUSTA	-	1
PEUGEOT	20	2
PIAGGIO	470	19
POLARIS	2	-
QJ, QJIANG, QJMOTOR, B MOTOBİ, QJTEC, LIFAN, GTS, DAYTONA MOTORS, SIMONINI MOTO, PINK, RKS	1	-
QJ, QJIANG, QJMOTOR, B MOTOBİ, QJTEC, RKS	6	-
QJ, QJMOTOR, B MOTOBİ, QJTEC, RKS	145	-
QJ, QJMOTOR, B MOTOBİ, QJTEC, RKS, KUBA, SKYJET	1	-
RATO, AVETA, NCX MOTO, ALTAI	4	-
RATO, YUKI, ASUS, DOCKER, MIGLIORI, VICTORY, AVETA, ALTAI, KUBA, RKS, BRIXTON MOTORCYCLES	13	-
RATO, ALTAI, MIGLIORI, DOCKER, ASUS, AVETA, BRIXTON MOTORCYCLES, KUBA, RKS, GENERIC, LAMBDA MOTORCYCLES,	64	-
REDMOTO	1	1
REGIS MOTORS	1	-
RIEJU	17	-
RIYA, RYMOTO, KUBA, Lexmoto, MITT, ALPHA MOTORS, IMF, ROMET, ZIPP, ARORA, ZORRO, MOJITO, MASH	2	-
RIYA, RYMOTO, KUBA, RKS, LEXMOTO, MITT, ALPHA MOTORS, IMF, ROMET, ZIPP, ARORA, ZORRO, MOJITO	1	-
ROYAL ENFIELD	41	-
Royalloy, Royal Alloy, RA	2	-
SHERCO	-	2
SHINERAY, SWM	2	-
SILENCE, SCUTUM, ETRIX	2	-
SKYTEAM, SACIN, CSR, METALCO, SOKUDO, BAZUKA, MINICO, MOTOSBASI, MOTOS BORDOY, SUMKO, ROXON, MONKEY BIKES	1	-
STARK	2	-
SUZUKI	63	16
SYM	704	7

Table 6 (cont)
Sales of new and used motorcycles by make or manufacturer: January 2026

Make	Motorcycles	
	January	
	new	used
TAYO, HAOJIANG, ZHONGYU, THUMP, THUMPSTAR, KIDEN, ZONTES, Junak, SENKE, TANNY, TYAN, ROMET	13	-
TAYO, ZONTES, KIDEN, Haojiang, ZHONGYU, Sharpon, TANNY, TYAN , Senke, B BETA, Daytona Motors, MONDIAL, RKS	66	-
TIANYING, RIYA, HONGYUNDA, TYM, HONLING, TAMCO, ALISON, DMK MOTORS, WLIE, LEEWAY, WLXQ, APGmoto	1	-
TM MOTO	1	-
TRIUMPH	36	2
UM	8	-
VELIMOTOR, VOLTAMP, ALTUX, KKL HITECH, WHEELNWATER TECH, ALTUS, NUVEAU MONDE, EN MOTO, YUBEE MOTORS, KKL	1	-
VELOCIFERO	1	-
VMOTO-SOCO, E-MAX, VMOTO, SUPER SOCO	1	-
VOGE, LONCIN, VOGEPRO	147	-
WANGYE, SANBEN, UM, KENOS, SUPERBYKE, MDC, MISTRAL	2	-
WONJAN, THRUST MOTOR, WMOTO, KEEWAY, TD	1	-
WUZHENG	1	-
XEV, X, XEV YOYO	2	-
YAMAHA	382	54
ZERO MOTORCYCLES	1	-
ZHIDOU , ZD, RKS	3	-
ZHONGNENG, ZNEN, AGM, BTC, COLIBRI, DAYTONA MOTORS, DERRACE, DOCKER, JM MOTORS, KUBA, La Souris, LEXMOTO	6	-
ZONGSHEN, ZONGSHENCYCLONE, ZONSEN, Lexmoto, MONDIAL, SINNIS, SPARKSTER, MACBOR, VORTEX	2	-
TOTAL	4,387	315

Graph 8. Sales of new motorcycles (January 2026)



EXPLANATORY NOTES

Survey on the issuing of new road motor vehicle circulation licenses	The survey on the issuing of new motor vehicle circulation licenses is a census survey. The released data give information, at country level, on the brand and type of the motor vehicle, as well as whether it is new or used. The survey does not include vehicles that move on rails, trolley busses, agricultural tractors and machinery. In addition, the following are excluded: all motor vehicles of the Armed Forces, Police, Fire Brigade, State Services, Diplomatic Corps, Foreign Missions, and Invalids of Wars, as well as motorcycles with a cylinder capacity less than 50 cc.
Legal basis	Law 3832/2010
Reference Period	January 2026
Coverage	The production of monthly data is based on the registers held by the Ministry of Infrastructure, Transport and Networks, which records all the monthly changes observed in the vehicle registration licenses at country level.
Definitions	<p>Road motor vehicle is any vehicle that, irrespective of the number of wheels, is moved by an engine and is designed to transport persons or cargo or both of them, either they are on the same single vehicle or on a trailer carried by the main motor vehicle.</p> <p>New road motor vehicle is any motor vehicle that is registered for the first time in Greece during the reference month and has not been put into circulation in any other country.</p> <p>Used motor vehicle is any motor vehicle that is registered for the first time in Greece and has been imported as a used one from abroad</p> <p>Passenger motor vehicle: it is a motor vehicle designed to carry mostly people, having no more than 9 seats, including the driver's seat.</p> <p>Bus: it is a motor vehicle, which is designed to carry mostly people, having more than 10 seats, including the driver's seat. In the corresponding tables of this announcement, this category also includes articulated buses.</p> <p>Lorry: it is motor vehicle designed to carry mostly cargo. In the corresponding tables of this announcement, this category also includes tractors, tow trucks, articulated tractors, and trucks with trailers.</p> <p>Motorcycle: any two-wheeled motor vehicle, with or without sidecar, with maximum authorized design speed over 45 km/h, or in case it is powered by a combustion engine, with a cylinder capacity of 50 cc or over. In the corresponding tables of this announcement, this category also includes the three-wheeled motor vehicles – motor tricycles.</p> <p>Tricycle motor vehicle: it is a motor vehicle with three symmetrical wheels with maximum authorized design speed over 45 km/h, or in case it is powered by a combustion engine, with a cylinder capacity over the 50 cc. This category also includes four-wheel vehicles, except the light four-wheel motorcycles, whose empty vehicle tare (excluding the weight of the fuel or mixture of fuel-oil or the weight of the batteries for electric cars) is up to 400 kg in the case the vehicle is designed for passenger use or up to 550 kg in case the vehicle is designed to carry cargo and whose engine is up to 15KW.</p>
Methodology	Exhaustive Survey. The primary data derive from the Ministry of Infrastructure, Transport and Networks and are based on the issuing of new circulation licenses as they are registered by the Regional Offices for Transport and Communications.
References	More information (graphs, tables) concerning the survey on the issuing of new motor vehicle circulation licenses are available on the webpage of ELSTAT, www.statistics.gr , under the link http://www.statistics.gr/en/statistics/-/publication/SME24/-