



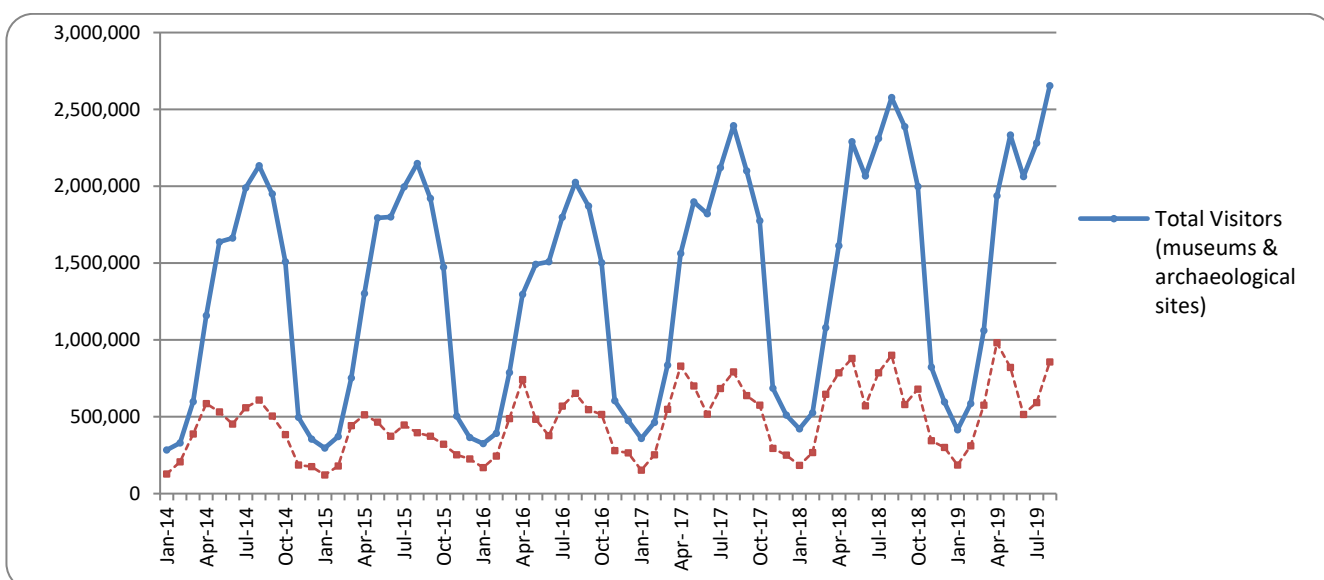
PRESS RELEASE

SURVEY ON MUSEUMS AND ARCHAEOLOGICAL SITES ATTENDANCE AUGUST 2019

The Hellenic Statistical Authority (ELSTAT) announces the results of the *Survey on Museums and Archaeological Sites Attendance* for August 2019. More specifically:

- In August 2019 compared with the corresponding month of 2018, Museums experienced a 4.3% increase in the number of visitors and a 0.8% decrease in the number of free admission visitors as well as a 28.2% increase in their receipts (Table 1).
- In August 2019 compared with the corresponding month of 2018, the number of visitors at Archaeological sites recorded an increase of 2.5%, while a decrease of 6.5% was observed in the number of free admission visitors and a 9.4% increase in the corresponding receipts (Table 1).
- During the eighth-month period from January to August 2019, an increase of 5.4% was observed in the number of visitors of Museums, while an increase of 3.8% was recorded in the number of free admission visitors and a 29.3% increase in the relevant receipts, in comparison with the corresponding period of 2018 (Table 2).
- As regards Archaeological sites, during the eighth-month period from January to August 2019, an increase of 4.9% was recorded in the number of visitors, while a 0.7% increase was observed in the number of free admission visitors and a 9.6% increase in the relevant receipts, in comparison with the corresponding period of 2018 (Table 2).

Graph 1: Visitors of Museums and Archaeological sites (January 2014 – August 2019)



Information on methodological issues:

Sectoral Statistics Division
Tourism and Cultural Statistics Section
Head of the Section: Asimina Katri
Tel: +30 213 135 2168
Fax: +30 213 135 2947
e-mail: a.katri@statistics.gr

Information for data provision:

Tel. +30 213 135 2022, 2308, 2310
e-mail: Data.dissem@statistics.gr

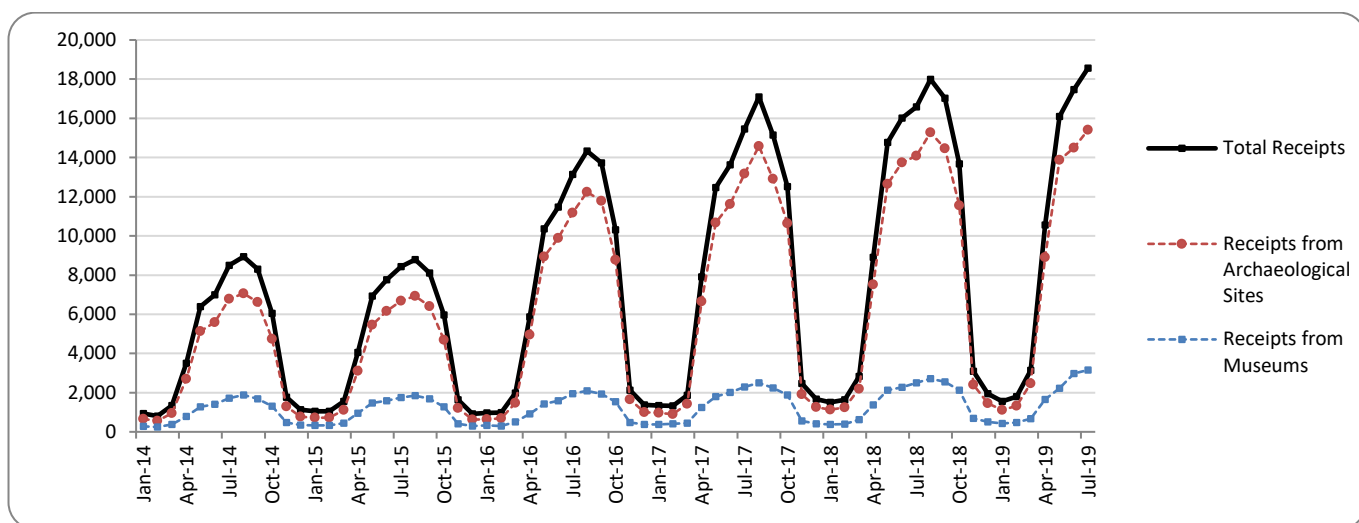
**TABLE 1: VISITORS OF MUSEUMS AND ARCHAEOLOGICAL SITES - TOTAL RECEIPTS
(AUGUST 2018 & AUGUST 2019)**

I. NUMBER OF VISITORS			
Museums and Archaeological sites	2018	2019	Change 2019/2018
Total number of visitors (A+B)	2,576,738	2,653,909	3.0%
A. Museums (C+E)	699,988	730,089	4.3%
Acropolis Museum	196,218	201,991	2.9%
National Archaeological	68,945	67,371	-2.3%
Ancient Olympia	18,302	16,674	-8.9%
Palace of the Grand Master (Rhodes)	45,462	48,407	6.5%
Herakleion Archaeological (Crete)	90,341	114,661	26.9%
White Tower	31,907	33,996	6.5%
Delphi	25,006	26,300	5.2%
Other museums	223,807	220,689	-1.4%
B. Archaeological Sites (D+F)	1,876,750	1,923,820	2.5%
Epidavros ⁽¹⁾	71,791	70,230	-2.2%
The Acropolis of Mycenae & Atreus' Treasure	61,519	58,778	-4.5%
The Acropolis of Athens ⁽²⁾	393,620	451,686	14.8%
Sounio	35,257	39,215	11.2%
The Acropolis of Lindos	90,496	99,732	10.2%
Royal Tombs of Vergina	21,153	20,746	-1.9%
Ancient Olympia	75,269	73,273	-2.7%
Knossos (Crete)	160,299	170,378	6.3%
Phaistos (Crete)	14,565	16,509	13.3%
Ancient Korinthos ⁽¹⁾	21,117	20,682	-2.1%
Mystras ⁽¹⁾	24,230	24,460	0.9%
Delphi	49,482	46,484	-6.1%
Other archaeological sites	857,952	831,647	-3.1%
II. VISITORS WHO PAID TICKET			
	2018	2019	Change 2019/2018
Total number of visitors who paid ticket (C+D)	1,677,225	1,797,312	7.2%
C. Museums	428,893	461,250	7.5%
D. Archaeological sites	1,248,332	1,336,062	7.0%
III. VISITORS WITH FREE ADMISSION TICKETS			
	2018	2019	Change 2019/2018
Total number of visitors with free admission ticket (E+F)	899,513	856,597	-4.8%
E. Museums	271,095	268,839	-0.8%
F. Archaeological sites	628,418	587,758	-6.5%
IV. RECEIPTS (euros)			
	2018	2019	Change 2019/2018
Total Receipts (G+H)	17,986,179	20,192,277	12.3%
G. Museums	2,706,638	3,470,122	28.2%
H. Archaeological sites	15,279,541	16,722,155	9.4%

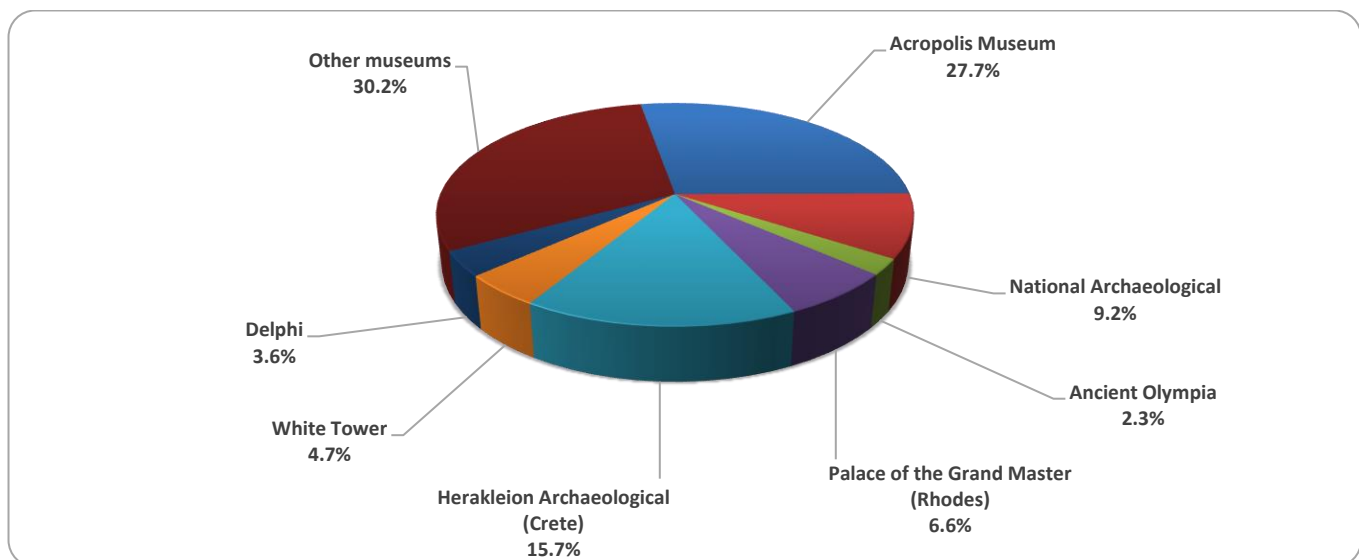
⁽¹⁾ Flat rate ticket, valid both for the museum and the archaeological site.

The following graphs depict the evolution of the receipts (Graph 2), as well as the number of visitors by Museum and Archaeological Site (Graphs 3 and 4, respectively).

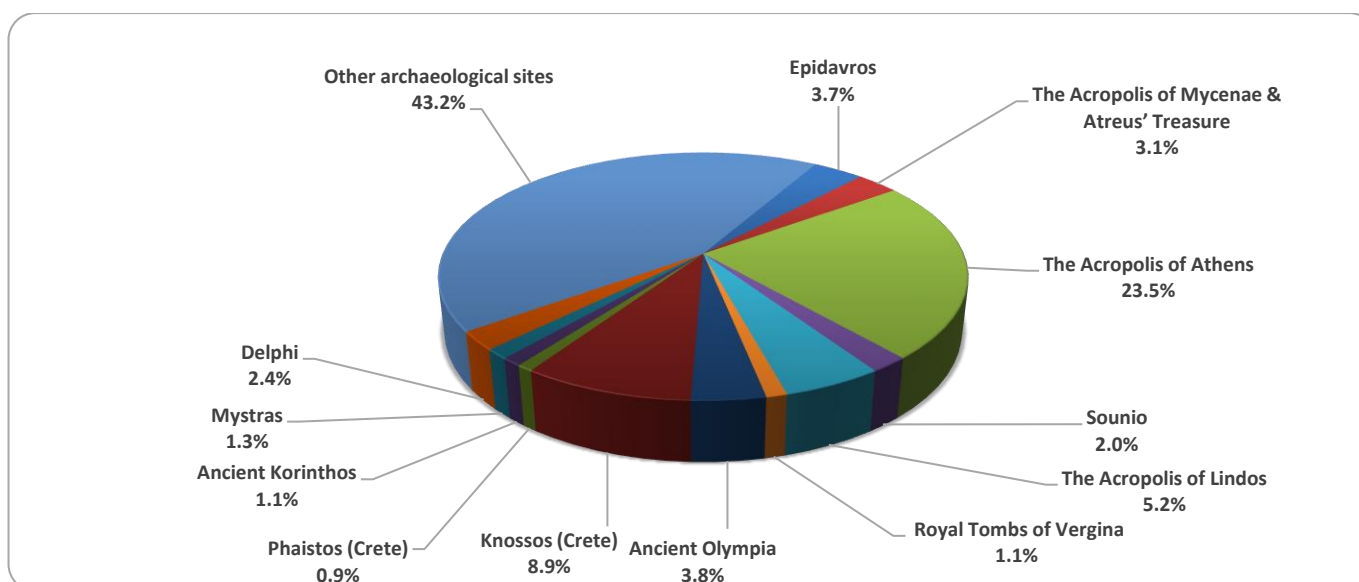
Graph 2: Receipts from Museums and Archaeological Sites (January 2014 – August 2019)
(in thousand euro)



Graph 3: Percentage distribution of visitors by Museum, August 2019



Graph 4: Percentage distribution of visitors by Archaeological site, August 2019



**TABLE 2: VISITORS OF MUSEUMS AND ARCHAEOLOGICAL SITES - TOTAL RECEIPTS
(2017, 2018, JANUARY-AUGUST 2018 & 2019)**

I. VISITORS					
Museums and Archaeological sites	2017	2018	JANUARY-AUGUST		change
			2018	2019	2019/2018
Total number of visitors (A+B)	16,524,557	18,603,282	12,879,949	13,526,442	5.0%
A. Museums (C+E)	5,191,781	5,702,211	3,866,027	4,074,916	5.4%
Acropolis Museum	1,593,362	1,774,304	1,203,999	1,238,866	2.9%
National Archaeological	545,555	594,219	394,109	417,555	5.9%
Ancient Olympia	145,118	156,658	114,034	116,113	1.8%
Palace of the Grand Master (Rhodes)	235,413	242,759	163,146	176,402	8.1%
Herakleion Archaeological (Crete)	426,191	555,031	373,222	444,698	19.2%
White Tower	268,149	225,944	149,515	168,084	12.4%
Delphi	211,827	249,754	173,043	192,616	11.3%
Other museums	1,766,166	1,903,542	1,294,959	1,320,582	2.0%
B. Archaeological Sites (D+F)	11,332,776	12,901,071	9,013,922	9,451,526	4.9%
Epidavros ⁽¹⁾	469,060	548,900	405,608	382,635	-5.7%
The Acropolis of Mycenae & Atreus' Treasure	412,397	495,993	361,292	358,723	-0.7%
The Acropolis of Athens ^{(2), (4)}	2,766,218	3,150,604	2,204,450	2,470,905	12.1%
Sounio	259,709	306,665	219,184	233,591	6.6%
The Acropolis of Lindos ⁽³⁾	441,012	489,137	334,389	360,523	7.8%
Royal Tombs of Vergina	203,632	222,503	158,864	156,558	-1.5%
Ancient Olympia	481,252	484,238	344,821	322,024	-6.6%
Knossos (Crete)	634,710	855,663	586,837	651,294	11.0%
Phaistos (Crete)	95,182	134,538	87,261	77,622	-11.0%
Ancient Korinthos ⁽¹⁾	191,836	196,944	134,076	140,091	4.5%
Mystras ⁽¹⁾	125,549	145,939	107,250	105,707	-1.4%
Delphi	345,804	405,947	292,147	282,169	-3.4%
Other archaeological sites	4,906,415	5,464,000	3,777,743	3,909,684	3.5%
II. VISITORS WHO PAID TICKET					
	2017	2018	JANUARY-AUGUST		change
			2018	2019	2019/2018
Total number of visitors who paid ticket (C+D)	10,288,448	11,576,110	7,861,069	8,419,135	7.1%
C. Museums	2,831,466	3,155,269	2,125,395	2,268,876	6.8%
D. Archaeological sites	7,456,982	8,420,841	5,735,674	6,150,259	7.2%
III. VISITORS WITH FREE ADMISSION TICKETS					
	2017	2018	JANUARY-AUGUST		change
			2018	2019 ⁽⁴⁾	2019/2018
Total number of visitors with free admission ticket (E+F)	6,236,109	7,027,172	5,018,880	5,107,307	1.8%
E. Museums	2,360,315	2,546,942	1,740,632	1,806,040	3.8%
F. Archaeological sites	3,875,794	4,480,230	3,278,248	3,301,267	0.7%
IV. RECEIPTS (euros)					
	2017	2018	JANUARY-AUGUST		change
			2018	2019	2019/2018
Total Receipts (G+H)	102,887,879	115,772,341	80,210,234	90,334,000	12.6%
G. Museums	16,175,121	18,251,493	12,377,181	16,003,138	29.3%
H. Archaeological sites	86,712,758	97,520,848	67,833,053	74,330,862	9.6%

⁽¹⁾ Flat rate ticket, valid both for the museum and the archaeological site.

⁽²⁾ From May 2017 onwards, the data for the number of tickets in the archaeological site of the Acropolis of Athens include the tickets of the Ancient Theatre of Dionysus.

⁽³⁾ The data referring to the number of tickets for the archaeological sites of the Acropolis of Lindos from November 2018 to February 2019 are provisional and are based on estimation.

⁽⁴⁾ Revised data due to the transmission of updated data for the period June - July 2019 by administrative sources.

EXPLANATORY NOTES

Survey on Museums and Archaeological Sites Attendance	<p>The Survey on Museums and Archaeological Sites Attendance has been producing results since 1970, The survey collects data from the Archaeological Receipts Fund (ARF) of the Ministry of Culture and Sports concerning the number of visitors and the receipts from the tickets sold in the Museums and Archaeological sites of the country.</p> <p>The corresponding data for the Acropolis Museum is available from December 2009 onwards.</p>
Legal Framework	<p>The survey is conducted since 1970 on a regular basis and it produces results on a monthly and yearly basis, in compliance with the Joint Ministerial Decision 15189/B379/73.</p>
Reference Period	<p>01/08/2019 to 30/08/2019</p>
Methodology and Definitions	<p>The Survey is conducted on a monthly basis from data mainly collected from the Archaeological Receipts Fund (ARF) of the Ministry of Culture and Sports concerning the number of visitors and the receipts from the tickets sold in the Museums and Archaeological sites of the Country. ELSTAT tabulates and present the data for the whole of the Country, by month and by year.</p> <p>Number of flat rate tickets</p> <p>From April 1999 onwards, in some museums and the nearby archaeological sites, in addition to the ordinary ticket, a new “flat rate ticket” was established, which is valid for both the museum and the nearby archaeological site, The total number of these flat rate tickets for August 2019 was 134,438.</p>
References	<p>More information on the Survey on Museums and Archaeological Sites Attendance and detailed time series are available on: http://www.statistics.gr/en/statistics/-/publication/SCI21/-</p>