



**SURVEYS ON PRE-PRIMARY AND PRIMARY EDUCATION
(KINDERGARTENS AND PRIMARY SCHOOLS)
END OF SCHOOL YEAR 2023-2024**

The Hellenic Statistical Authority (ELSTAT) announces data on Pre-Primary and Primary Education Statistics for the school year 2023/2024. Based on the available survey data the following observations can be made:

- a) In the school year 2023/2024 compared with the school year 2022/2023, **school units** decreased by 0.7% in kindergartens and by 0.9% in primary schools (Tables 2 and 4, respectively).
- b) In the school year 2023/2024 compared with the school year 2022/2023, **teaching staff** increased by 4.9% in kindergartens and by 13.1% in primary schools (Tables 2 and 4, respectively).
- c) The **number of pupils** enrolled in the school year 2023/2024 compared with the corresponding number in the school year 2022/2023 recorded a 3.1% decrease in kindergartens and a 2.1% decrease in primary schools (Tables 3 and 5, respectively).
- d) The **number of graduates** in primary schools in the school year 2023/2024 compared with 2022/2023 decreased by 1.6% (Table 6).
- e) The **ratio of teaching staff to pupils**, in the school year 2023/2024 was 1 to 7.6 in kindergartens and 1 to 7.2 in primary schools while in the school year 2022/2023 the corresponding ratio was 1 to 8.2 and 1 to 8.4, respectively (Tables 2, 3, 4 and 5).
- f) The **Region of Attiki** accounted for the largest share of pupils enrolled in pre-primary and primary education schools with 36% for kindergartens and 35.9% for primary schools (Graphs 2 and 3, respectively).

Information on methodological issues:

Division of Sectoral Statistics
Section of Statistics on Education & Sports
Head of the Section: Dimitra Angelopoulou
Tel: +30 213 135 2134
[e-mail: d.angelopoulou@statistics.gr](mailto:d.angelopoulou@statistics.gr)

Information for data provision:

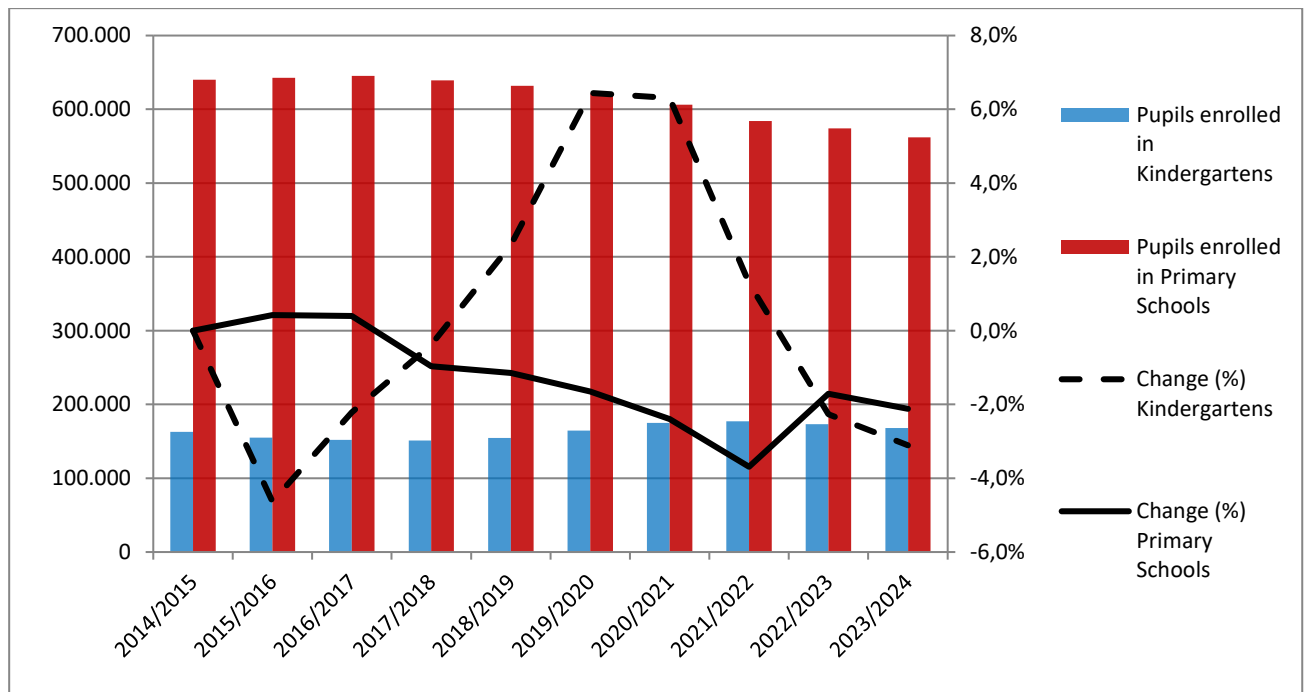
Tel. +30 213 135 2022, 2310
[email: data.dissem@statistics.gr](mailto:data.dissem@statistics.gr)

Table 1 and Graph 1 depict the evolution of the pupil population of kindergartens and primary schools during school years 2014/2015 to 2023/2024.

Table 1
Evolution of pupil population in Pre-Primary and Primary Education 2014/2015 - 2023/2024

School Year	Number of Pupils	
	Kindergartens	Primary Schools
2014/2015	162,781	640,001
2015/2016	155,243	642,707
2016/2017	151,804	645,250
2017/2018	151,225	639,037
2018/2019	154,744	631,700
2019/2020	164,716	621,298
2020/2021	175,108	606,400
2021/2022	177,372	584,032
2022/2023	173,350	574,047
2023/2024	167,969	561,890

Graph 1
Evolution of pupil population in Pre-Primary and Primary Education 2014/2015 - 2023/2024



A. KINDERGARTENS

Tables 2 and 3 present data on the number of kindergartens, teaching staff and pupils enrolled.

Table 2. School Units and Teaching Staff¹ by Type of School Unit and NUTS 2 Region (Kindergartens)

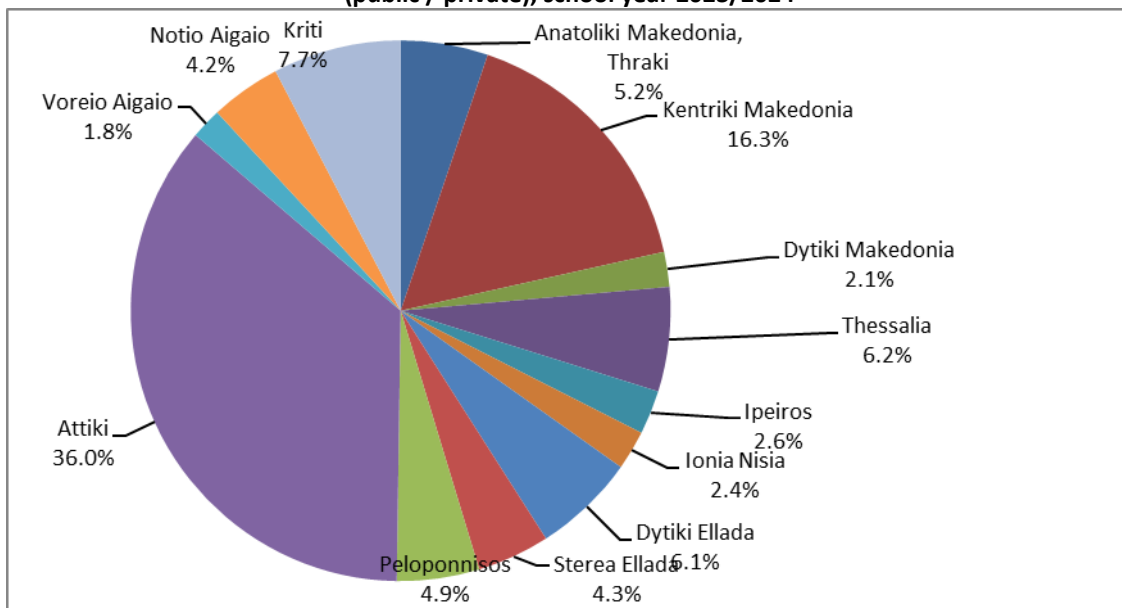
<i>By Type of School Unit</i>						
School Units	Number of School Units			Teaching Staff		
	2022/23	2023/24	Change (%)	2022/23	2023/24	Change (%)
Public	4,838	4,810	-0.6	19,188	20,189	5.2
Private	820	808	-1.5	1,867	1,902	1.9
TOTAL	5,658	5,618	-0.7	21,055	22,091	4.9
<i>By Region</i>						
NUTS 2 Region	Number of School Units			Teaching Staff		
	2022/23	2023/24	Change (%)	2022/23	2023/24	Change (%)
Anatoliki Makedonia, Thraki	311	309	-0.6	1,013	1,052	3.8
Kentriki Makedonia	956	949	-0.7	3,460	3,505	1.3
Dytiki Makedonia	171	168	-1.8	523	527	0.8
Thessalia	422	416	-1.4	1,238	1,246	0.6
Ipeiros	203	206	1.5	581	593	2.1
Ionia Nisia	146	143	-2.1	539	591	9.6
Dytiki Ellada	391	384	-1.8	1,148	1,178	2.6
Stereia Ellada	307	307	0.0	957	996	4.1
Peloponnisos	337	332	-1.5	995	1,044	4.9
Attiki	1,602	1,596	-0.4	7,254	7,839	8.1
Voreio Aigaio	146	147	0.7	559	581	3.9
Notio Aigaio	228	227	-0.4	901	937	4.0
Kriti	438	434	-0.9	1,887	2,002	6.1
TOTAL	5,658	5,618	-0.7	21,055	22,091	4.9

¹ Teaching staff includes teachers classified as absent. "Absent teachers" are the teachers with a fixed post in the school unit, who are absent for more than 20 days (due to illness, training, maternity leave, etc) and their replacement is pending, as well as the teachers who are seconded to other administrative posts of the Ministry of Education and Religious Affairs or elsewhere.

Table 3. Pupils enrolled by Type of School Unit and NUTS 2 Region (Kindergartens)

By Type of School Unit									
School Units	Greece total			Males			Females		
	2022/23	2023/24	Change (%)	2022/23	2023/24	Change (%)	2022/23	2023/24	Change (%)
Public	148,968	143,615	-3.6	77,052	74,177	-3.7	71,916	69,438	-3.4
Private	24,382	24,354	-0.1	12,793	12,623	-1.3	11,589	11,731	1.2
TOTAL	173,350	167,969	-3.1	89,845	86,800	-3.4	83,505	81,169	-2.8
By Region									
NUTS 2 Region	Greece total			Males			Females		
	2022/23	2023/24	Change (%)	2022/23	2023/24	Change (%)	2022/23	2023/24	Change (%)
Anatoliki Makedonia, Thraki	9,366	8,787	-6.2	4,874	4,546	-6.7	4,492	4,241	-5.6
Kentriki Makedonia	28,464	27,329	-4.0	14,668	14,027	-4.4	13,796	13,302	-3.6
Dytiki Makedonia	3,725	3,504	-5.9	1,930	1,820	-5.7	1,795	1,684	-6.2
Thessalia	10,869	10,479	-3.6	5,702	5,467	-4.1	5,167	5,012	-3.0
Ipeiros	4,574	4,417	-3.4	2,327	2,219	-4.6	2,247	2,198	-2.2
Ionia Nisia	3,861	3,959	2.5	1,989	2,036	2.4	1,872	1,923	2.7
Dytiki Ellada	10,451	10,304	-1.4	5,388	5,338	-0.9	5,063	4,966	-1.9
Stereia Ellada	7,810	7,305	-6.5	4,063	3,794	-6.6	3,747	3,511	-6.3
Peloponnisos	8,566	8,287	-3.3	4,451	4,289	-3.6	4,115	3,998	-2.8
Attiki	62,276	60,525	-2.8	32,192	31,240	-3.0	30,084	29,285	-2.7
Voreio Aigaio	3,291	3,094	-6.0	1,712	1,597	-6.7	1,579	1,497	-5.2
Notio Aigaio	7,207	7,089	-1.6	3,793	3,737	-1.5	3,414	3,352	-1.8
Kriti	12,890	12,890	0.0	6,756	6,690	-1.0	6,134	6,200	1.1
TOTAL	173,350	167,969	-3.1	89,845	86,800	-3.4	83,505	81,169	-2.8

Graph 2
Percentage distribution of pupils enrolled in Kindergartens, by NUTS 2 Region (public / private), school year 2023/2024



B. PRIMARY SCHOOLS

Tables 4, 5 and 6 present data on the number of primary schools, teaching staff, pupils enrolled and graduates.

Table 4. School Units and Teaching Staff² by Type of School Unit and NUTS 2 Region (Primary Schools)

By Type of School Unit						
School Units	Number of School Units			Teaching Staff		
	2022/23	2023/24	Change (%)	2022/23	2023/24	Change (%)
Public	4,193	4,148	-1.1	64,789	73,783	13.9
Private	161	166	3.1	3,800	3,815	0.4
TOTAL	4,354	4,314	-0.9	68,589	77,598	13.1
By Region						
NUTS 2 Region	Number of School Units			Teaching Staff		
	2022/23	2023/24	Change (%)	2022/23	2023/24	Change (%)
Anatoliki Makedonia, Thraki	313	298	-4.8	3,719	4,037	8.6
Kentriki Makedonia	733	734	0.1	11,808	13,250	12.2
Dytiki Makedonia	151	147	-2.6	1,860	2,051	10.3
Thessalia	339	332	-2.1	4,573	4,966	8.6
Ipeiros	181	180	-0.6	2,008	2,243	11.7
Ionia Nisia	105	103	-1.9	1,595	1,766	10.7
Dytiki Ellada	351	350	-0.3	4,293	4,772	11.2
Stereia Ellada	283	278	-1.8	3,228	3,570	10.6
Peloponnisos	259	258	-0.4	3,265	3,683	12.8
Attiki	1,007	1,009	0.2	22,982	26,346	14.6
Voreio Aigaio	134	132	-1.5	1,561	1,762	12.9
Notio Aigaio	184	182	-1.1	2,495	2,955	18.4
Kriti	314	311	-1.0	5,202	6,197	19.1
TOTAL	4,354	4,314	-0.9	68,589	77,598	13.1

² Teaching staff includes teachers classified as absent. "Absent teachers" are the teachers with a fixed post in the school unit, who are absent for more than 20 days (due to illness, training, maternity leave, etc) and their replacement is pending, as well as the teachers who are seconded to other administrative posts of the Ministry of Education and Religious Affairs or elsewhere.

Table 5. Pupils enrolled by Type of School Unit and NUTS 2 Region (Primary Schools)

<i>By Type of School Unit</i>									
School Units	Greece total			Males			Females		
	2022/23	2023/24	Change (%)	2022/23	2023/24	Change (%)	2022/23	2023/24	Change (%)
Public	531,762	518,415	-2.5	272,990	266,271	-2.5	258,772	252,144	-2.6
Private	42,285	43,475	2.8	21,657	22,254	2.8	20,628	21,221	2.9
TOTAL	574,047	561,890	-2.1	294,647	288,525	-2.1	279,400	273,365	-2.2
<i>By Region</i>									
NUTS 2 Region	Greece total			Males			Females		
	2022/23	2023/24	Change (%)	2022/23	2023/24	Change (%)	2022/23	2023/24	Change (%)
Anatoliki Makedonia, Thraki	30,420	29,874	-1.8	15,577	15,276	-1.9	14,843	14,598	-1.7
Kentriki Makedonia	97,376	94,430	-3.0	49,892	48,424	-2.9	47,484	46,006	-3.1
Dytiki Makedonia	12,526	12,190	-2.7	6,404	6,220	-2.9	6,122	5,970	-2.5
Thessalia	36,917	35,851	-2.9	19,059	18,588	-2.5	17,858	17,263	-3.3
Ipeiros	16,124	15,703	-2.6	8,262	8,014	-3.0	7,862	7,689	-2.2
Ionia Nisia	12,517	12,280	-1.9	6,524	6,421	-1.6	5,993	5,859	-2.2
Dytiki Ellada	35,181	34,189	-2.8	18,081	17,547	-3.0	17,100	16,642	-2.7
Stereia Ellada	26,430	25,724	-2.7	13,659	13,315	-2.5	12,771	12,409	-2.8
Peloponnisos	28,433	27,886	-1.9	14,562	14,222	-2.3	13,871	13,664	-1.5
Attiki	205,389	201,499	-1.9	105,367	103,351	-1.9	100,022	98,148	-1.9
Voreio Aigaio	10,427	10,391	-0.3	5,342	5,383	0.8	5,085	5,008	-1.5
Notio Aigaio	22,122	22,050	-0.3	11,422	11,409	-0.1	10,700	10,641	-0.6
Kriti	40,185	39,823	-0.9	20,496	20,355	-0.7	19,689	19,468	-1.1
TOTAL	574,047	561,890	-2.1	294,647	288,525	-2.1	279,400	273,365	-2.2

Graph 3
Percentage distribution of pupils enrolled in Primary Schools
by NUTS 2 Region, school year 2023/2024

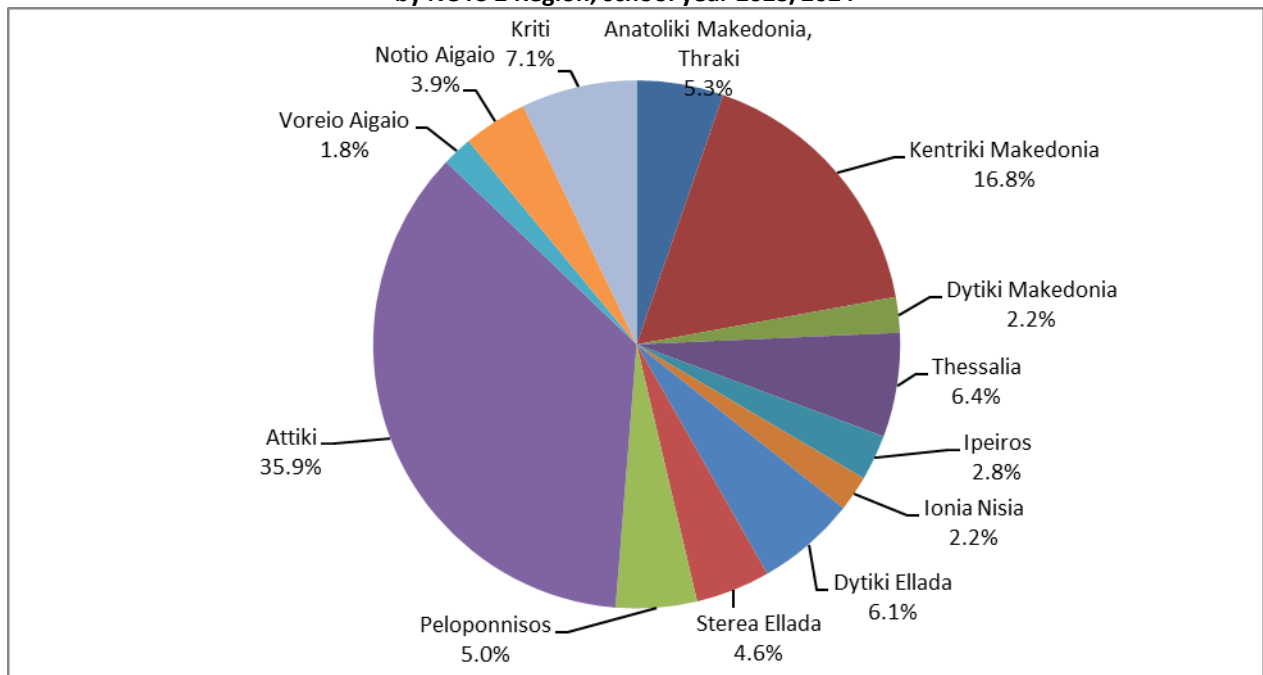


Table 6. Graduates by Type of School Unit and NUTS 2 Region (Primary Schools)

<i>By Type of School Unit</i>			
School Units	Graduates		
	2022/23	2023/24	Change (%)
Public	92,341	90,317	-2.2
Private	6,733	7,207	7.0
TOTAL	99,074	97,524	-1.6
<i>By Region</i>			
NUTS 2 Region	Graduates		
	2022/23	2023/24	Change (%)
Anatoliki Makedonia, Thraki	5,233	5,005	-4.4
Kentriki Makedonia	17,451	16,641	-4.6
Dytiki Makedonia	2,234	2,217	-0.8
Thessalia	6,524	6,230	-4.5
Ipeiros	2,790	2,669	-4.3
Ionia Nisia	2,170	2,104	-3.0
Dytiki Ellada	6,277	5,912	-5.8
Stereia Ellada	4,506	4,508	0.0
Peloponnisos	4,952	4,961	0.2
Attiki	34,793	34,878	0.2
Voreio Aigaio	1,688	1,812	7.3
Notio Aigaio	3,661	3,724	1.7
Kriti	6,795	6,863	1.0
TOTAL	99,074	97,524	-1.6

EXPLANATORY NOTES

Surveys on Pre-Primary and Primary Education Pre-primary and Primary Education includes Kindergartens and Primary Schools. The relevant surveys are conducted on a yearly basis, with the aim of collecting data on the number of pupils enrolled, the school units and the number of teaching staff.

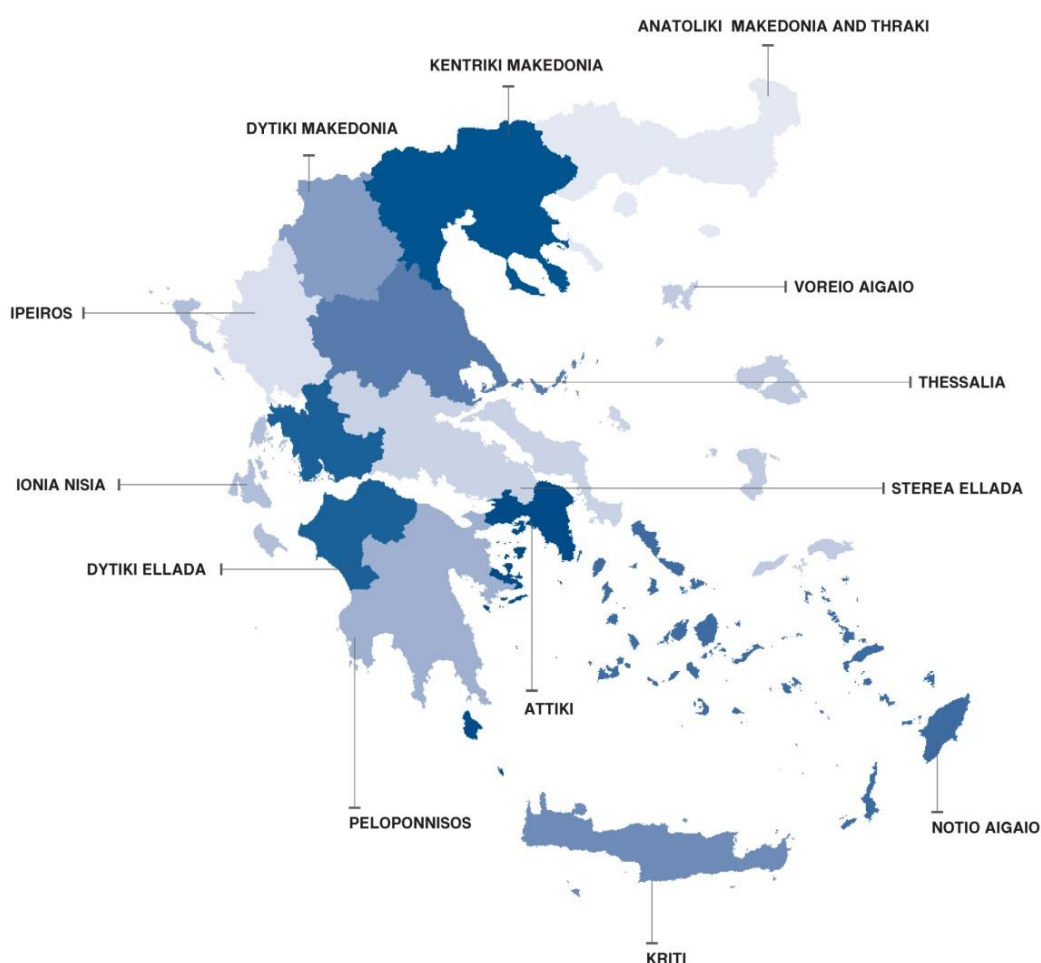
Legal Framework The surveys are conducted by virtue of Regulation 452/2008 of the European Parliament and the Council and implementing Regulation 912/2013 of the European Commission.

Statistical Units The statistical units are the school units.

Coverage Greece total.

Geographical Classification The geographical classification is based on Nomenclature of Territorial Units for Statistics.

Map of the 13 Regions (NUTS 2) of Greece



Dissemination of results	The data are posted on a yearly basis on the website of ELSTAT and are published in a relevant Press Release.
Reference period	The data of the surveys refer to the end of school year 2023/2024. For comparability reasons, the data of the end of the previous school year 2022/2023 are also provided.
Methodology and coverage	<p>Until the school year 2013/2014, the surveys on Pre-Primary and Primary Education used to be census, yearly surveys and they were conducted by ELSTAT.</p> <p>From the school year 2014/2015 to the school year 2020/2021, data of these surveys were collected as follows:</p> <ul style="list-style-type: none"> – As regards public school units, the data were extracted from the “live” e-platform “MySchool” of the Ministry of Education and Religious Affairs. – As regards private school units, data were collected from the questionnaires that were sent to the relevant school units. <p>For the school year 2021/22 the data are extracted from the “live” e-platform “MySchool” of the Ministry of Education and Religious Affairs for both public and private school units.</p>
References	More information, such as tables with the survey results, samples of questionnaires, etc, on the Survey on Pre-Primary and Primary Education can be found on the webpage of ELSTAT www.statistics.gr and at the link: “Statistics” / Population and Social Conditions / Education / Primary Education / Kindergartens (Beginning – End of school year) or Primary Schools (Beginning – End of school year)”.