



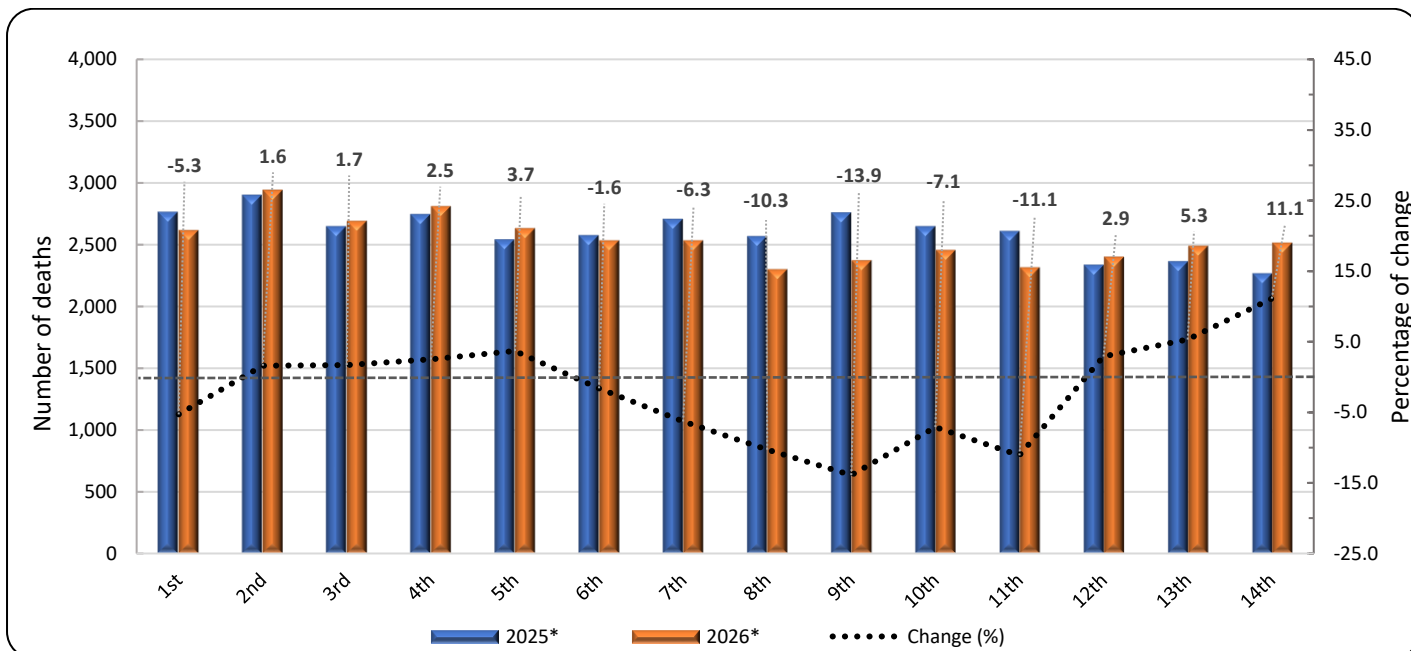
## DATA ON WEEKLY DEATHS: Period 1<sup>st</sup> to 14<sup>th</sup> week, 2026

The Hellenic Statistical Authority (ELSTAT) announces the provisional statistical data depicting the weekly evolution of death counts for the period from the first (1<sup>st</sup>) to the fourteenth (14<sup>th</sup>) week of 2026 (29/12/2025 – 05/04/2026), according to the international standard of dates ISO8601. Data refer to the deaths that occurred in the Greek territory during that period due to various causes.

The data included in this publication are compiled within the framework of the Vital Statistics Survey, are drawn from civil registry acts as submitted by Municipal Authorities and refer to vital events declared and registered until the date of data transmission. Deaths reported after the statutory registration deadline are incorporated at a later stage, and the registration is recorded at the date of occurrence.

According to these data, **the number of deaths in Greece during the first fourteen (14) weeks of 2026 (29/12/2025 – 05/04/2026) amounted to 35,604** (18,088 men and 17,516 women), **whereas during the corresponding period of 2025 (30/12/2024 – 06/04/2025) had amounted to 36,393** (18,316 men and 18,077 women) recording a decrease of 789 deaths (-2.2%). A decrease of 2,461 deaths (-6.5%) is recorded compared to the average of the first fourteen (14) weeks cumulative deaths for the six-year period 2020 – 2025 (38,065 deaths). The corresponding annual rates of change for the period 2020 - 2025 amount to 3.6% in 2025 compared to 2024 (35,116), -7.5% in 2024 compared to 2023 (37,945), -13.7% in 2023 compared to 2022 (43,968), 17.8% in 2022 compared to 2021 (37,338) and -0.8% in 2021 compared to 2020 (37,627) (Tables 1, 2, 3 and 4).

**Graph 1. Weekly evolution of deaths for the weeks 1<sup>st</sup> - 14<sup>th</sup>, 2025 and 2026**



\*Provisional data

**Information on methodological issues:**

Population, Employment and Cost of Living Statistics Division  
Population and Migration Statistics Section  
Thymoglou Georgia, tel: +30 213 135 2175, e-mail: [g.thymoglou@statistics.gr](mailto:g.thymoglou@statistics.gr)  
Christou Christos, tel: +30 213 135 2884, e-mail: [c.christou@statistics.gr](mailto:c.christou@statistics.gr)  
Milaïou Anna, tel: +30 213 135 2934, e-mail: [a.milaiou@statistics.gr](mailto:a.milaiou@statistics.gr)

**Information on data provision:**

tel: +30 213 135 2022, 2308, 2310  
e-mail: [data.dissem@statistics.gr](mailto:data.dissem@statistics.gr)

**Table 1. Weekly evolution of deaths, 2025 and 2026**

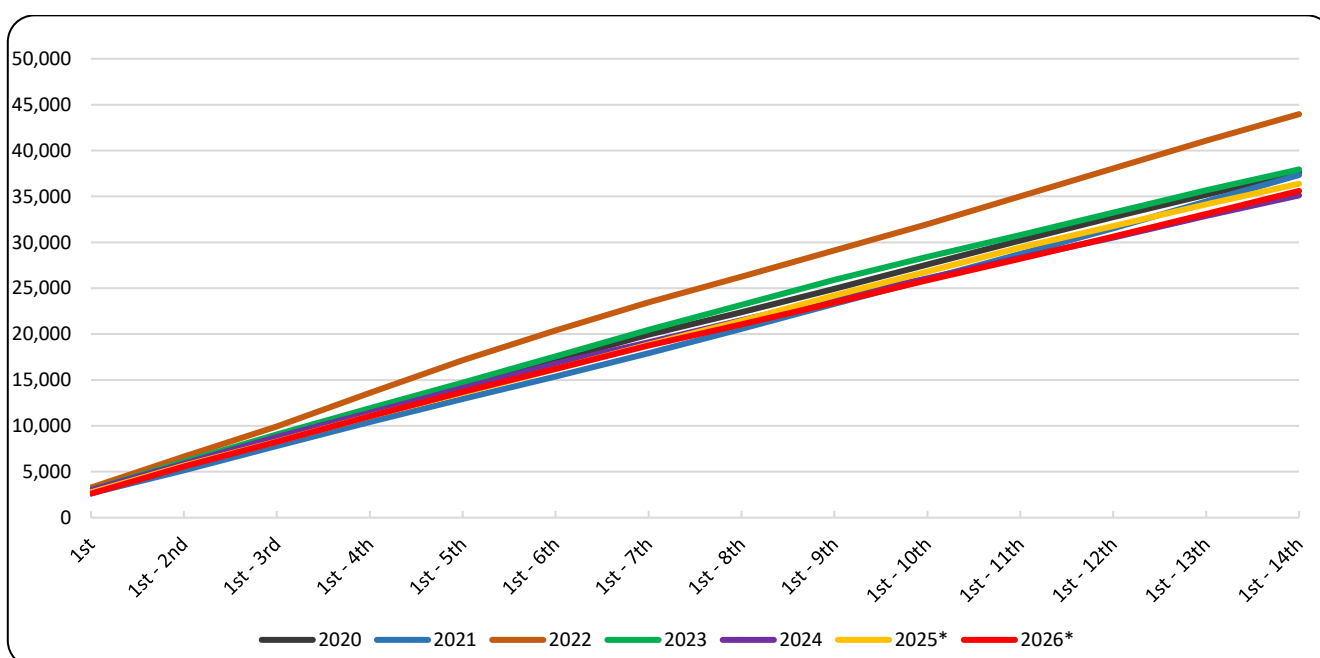
Week	2025*	2026*	Change (%)
1 <sup>st</sup>	2,762	2,616	-5.3
2 <sup>nd</sup>	2,899	2,944	1.6
3 <sup>rd</sup>	2,646	2,691	1.7
4 <sup>th</sup>	2,742	2,810	2.5
5 <sup>th</sup>	2,538	2,631	3.7
6 <sup>th</sup>	2,573	2,532	-1.6
7 <sup>th</sup>	2,705	2,534	-6.3
8 <sup>th</sup>	2,564	2,300	-10.3
9 <sup>th</sup>	2,756	2,372	-13.9
10 <sup>th</sup>	2,644	2,455	-7.1
11 <sup>th</sup>	2,605	2,316	-11.1
12 <sup>th</sup>	2,334	2,401	2.9
13 <sup>th</sup>	2,362	2,488	5.3
14 <sup>th</sup>	2,263	2,514	11.1
<b>Total</b>	<b>36,393</b>	<b>35,604</b>	<b>-2,2</b>

\*Provisional data

According to the above data, for the first fourteen (14) weeks of 2026 compared to the corresponding period of 2025, the most notable increases are observed for the 14<sup>th</sup> (30/03/2026 - 05/04/2026), the 13<sup>th</sup> (23/03/2026 - 29/03/2026) and the 5<sup>th</sup> week (26/01/2026 - 01/02/2026) by 11.1%, 5.3% and 3.7% respectively. The most notable decreases are observed for the 9<sup>th</sup> (23/02/2026 - 01/03/2026), the 11<sup>th</sup> (09/03/2026 - 15/03/2026) and the 8<sup>th</sup> week (16/02/2026 - 22/02/2026) by -13.9%, -11.1% and -10.3% respectively.

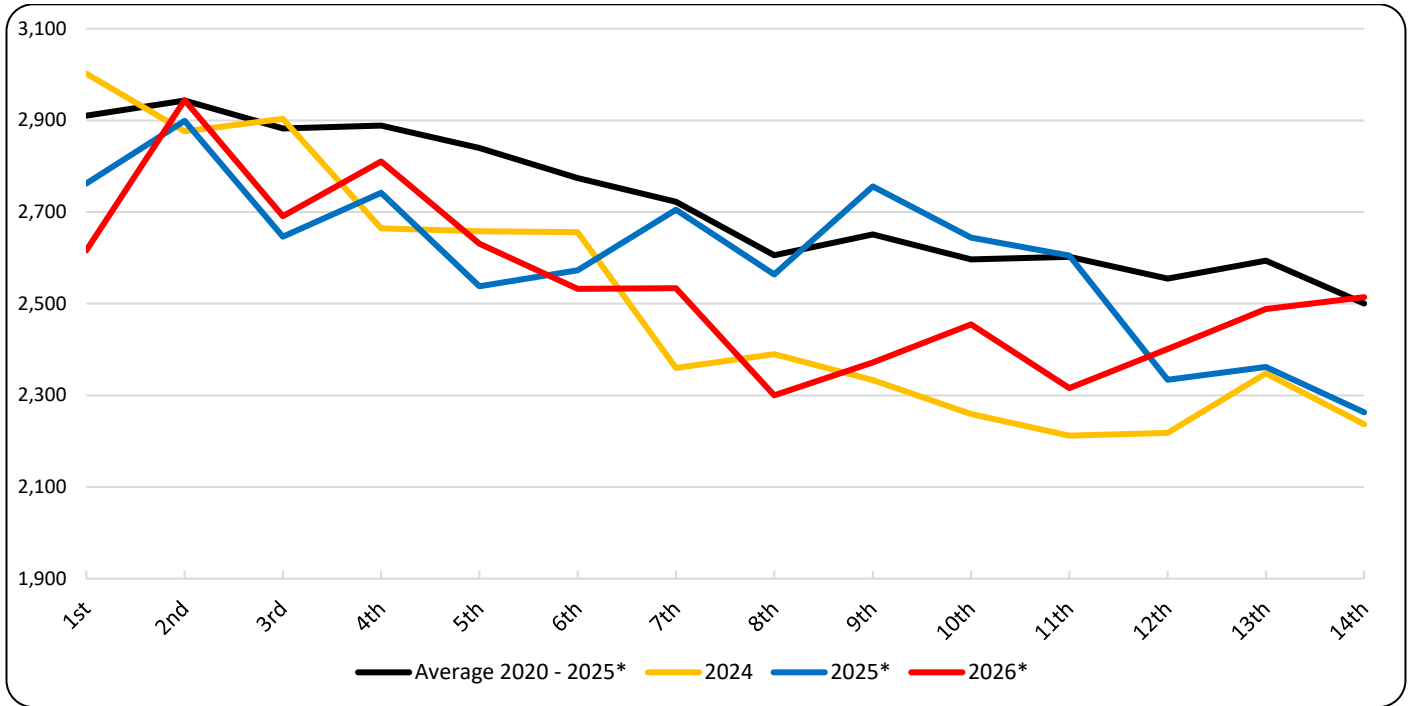
It should be noted that data are updated after integration of more recent data or upon revision of already transmitted data by the Registry Offices. As a result, data may differ from those already announced in previous publications.

**Graph 2. Deaths for the weeks 1<sup>st</sup> - 14<sup>th</sup>, 2020 - 2026 (cumulative)**



\*Provisional data

**Graph 3. Deaths by week for the weeks 1<sup>st</sup> - 14<sup>th</sup>, 2024, 2025, 2026 and Average for the period 2020 - 2025**



\*Provisional data

**Table 2. Deaths for the weeks 1<sup>st</sup> - 14<sup>th</sup>, 2020 - 2026 (cumulative)**

Week	2020	2021	2022	2023	2024	2025*	2026*	Average 2020 - 2025*
1 <sup>st</sup>	2,751	2,650	3,276	3,021	3,002	2,762	2,616	2,910
1 <sup>st</sup> - 2 <sup>nd</sup>	5,674	5,147	6,654	6,107	5,878	5,661	5,560	5,854
1 <sup>st</sup> - 3 <sup>rd</sup>	8,537	7,798	9,924	9,067	8,781	8,307	8,251	8,736
1 <sup>st</sup> - 4 <sup>th</sup>	11,311	10,423	13,603	11,914	11,445	11,049	11,061	11,624
1 <sup>st</sup> - 5 <sup>th</sup>	14,301	12,916	17,164	14,713	14,103	13,587	13,692	14,464
1 <sup>st</sup> - 6 <sup>th</sup>	17,151	15,379	20,406	17,573	16,759	16,160	16,224	17,238
1 <sup>st</sup> - 7 <sup>th</sup>	19,933	17,914	23,475	20,458	19,119	18,865	18,758	19,961
1 <sup>st</sup> - 8 <sup>th</sup>	22,402	20,582	26,272	23,203	21,509	21,429	21,058	22,566
1 <sup>st</sup> - 9 <sup>th</sup>	24,947	23,306	29,119	25,903	23,842	24,185	23,430	25,217
1 <sup>st</sup> - 10 <sup>th</sup>	27,592	25,963	31,967	28,428	26,101	26,829	25,885	27,813
1 <sup>st</sup> - 11 <sup>th</sup>	30,186	28,751	35,016	30,793	28,313	29,434	28,201	30,416
1 <sup>st</sup> - 12 <sup>th</sup>	32,734	31,510	38,058	33,222	30,531	31,768	30,602	32,971
1 <sup>st</sup> - 13 <sup>th</sup>	35,173	34,440	41,096	35,667	32,879	34,130	33,090	35,564
1 <sup>st</sup> - 14 <sup>th</sup>	37,627	37,338	43,968	37,945	35,116	36,393	35,604	38,065
<b>Change (%)</b>		<b>-0.8</b>	<b>17.8</b>	<b>-13.7</b>	<b>-7.5</b>	<b>3.6</b>	<b>-2.2</b>	

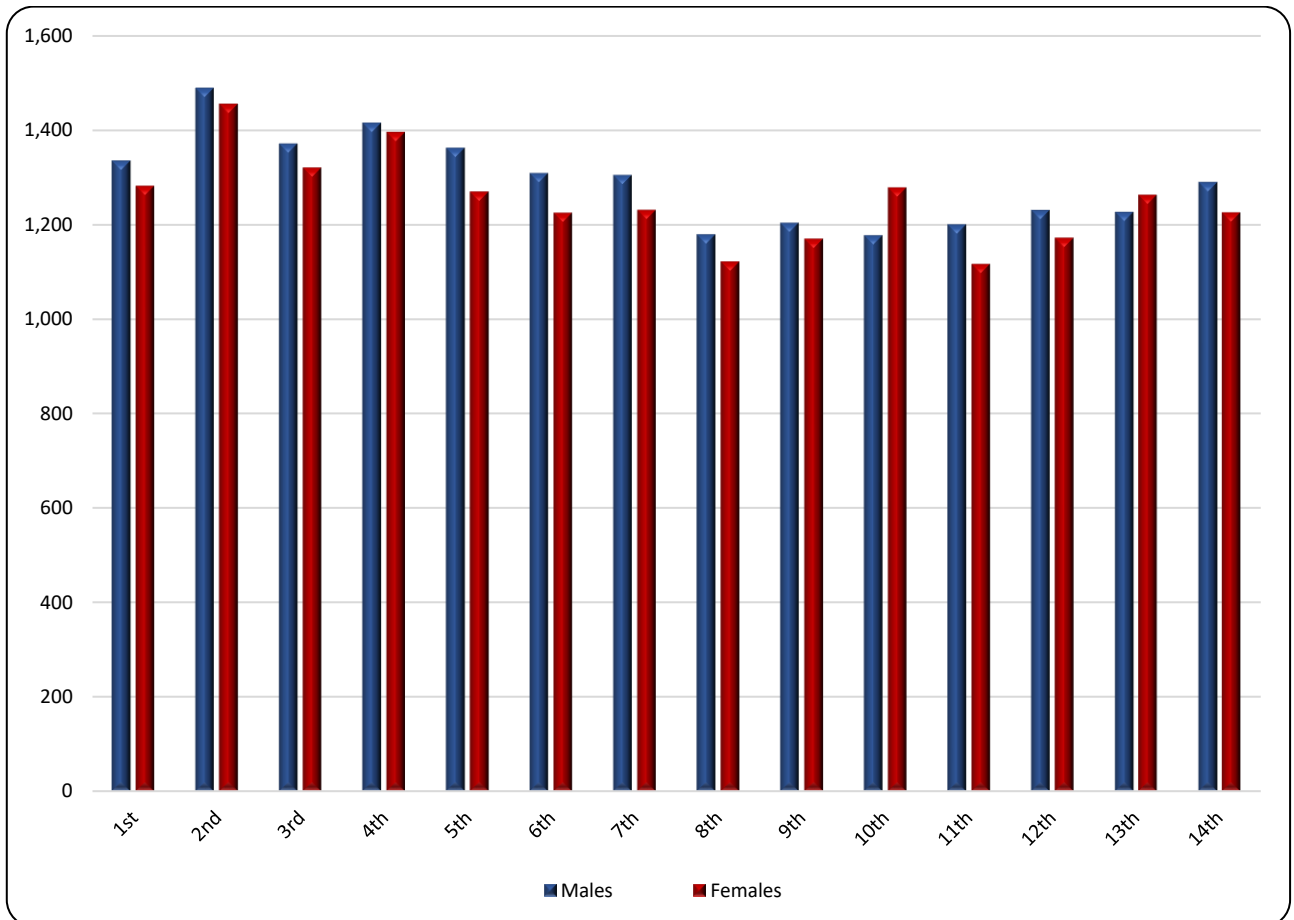
\*Provisional data

**Table 3. Weekly evolution of deaths by sex, for the weeks 1<sup>st</sup> - 14<sup>th</sup>, 2026\***

Week	Total	Males	Females
1 <sup>st</sup>	2,616	1,335	1,281
2 <sup>nd</sup>	2,944	1,489	1,455
3 <sup>rd</sup>	2,691	1,371	1,320
4 <sup>th</sup>	2,810	1,415	1,395
5 <sup>th</sup>	2,631	1,362	1,269
6 <sup>th</sup>	2,532	1,308	1,224
7 <sup>th</sup>	2,534	1,304	1,230
8 <sup>th</sup>	2,300	1,179	1,121
9 <sup>th</sup>	2,372	1,203	1,169
10 <sup>th</sup>	2,455	1,177	1,278
11 <sup>th</sup>	2,316	1,200	1,116
12 <sup>th</sup>	2,401	1,230	1,171
13 <sup>th</sup>	2,488	1,226	1,262
14 <sup>th</sup>	2,514	1,289	1,225
<b>Total</b>	<b>35,604</b>	<b>18,088</b>	<b>17,516</b>

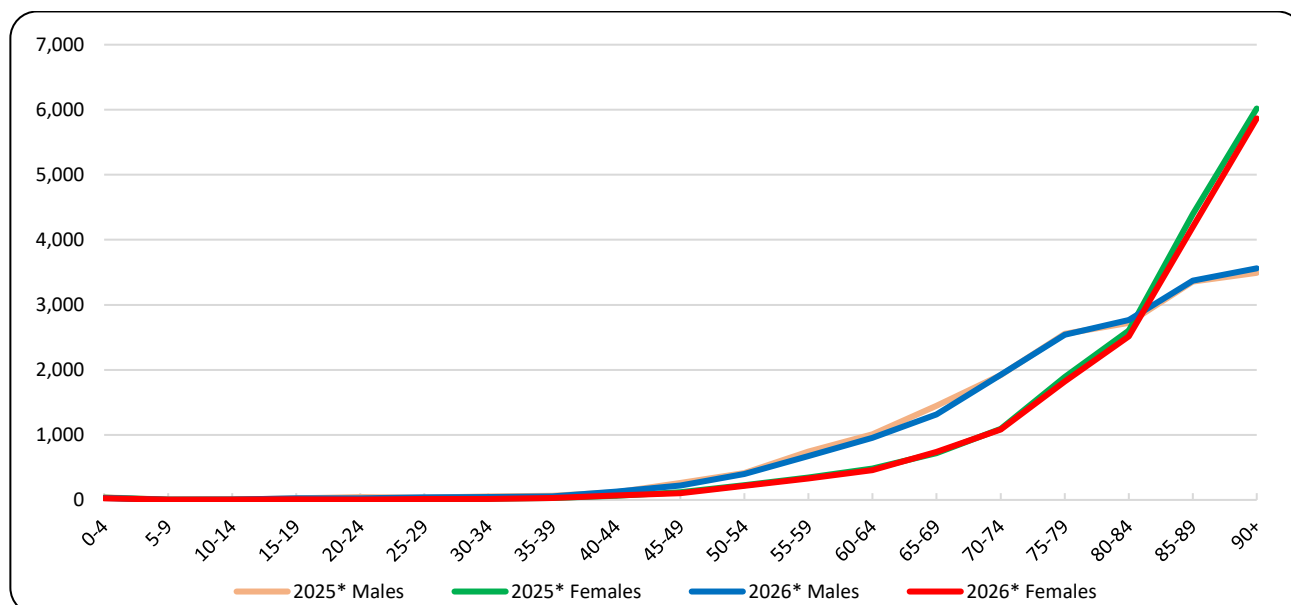
\*Provisional data

**Graph 4. Weekly evolution of deaths by sex, for the weeks 1<sup>st</sup> - 14<sup>th</sup>, 2026\***



\*Provisional data

**Graph 5. Deaths by age group and sex, 1<sup>st</sup> - 14<sup>th</sup> week, 2025 and 2026**



\*Provisional data

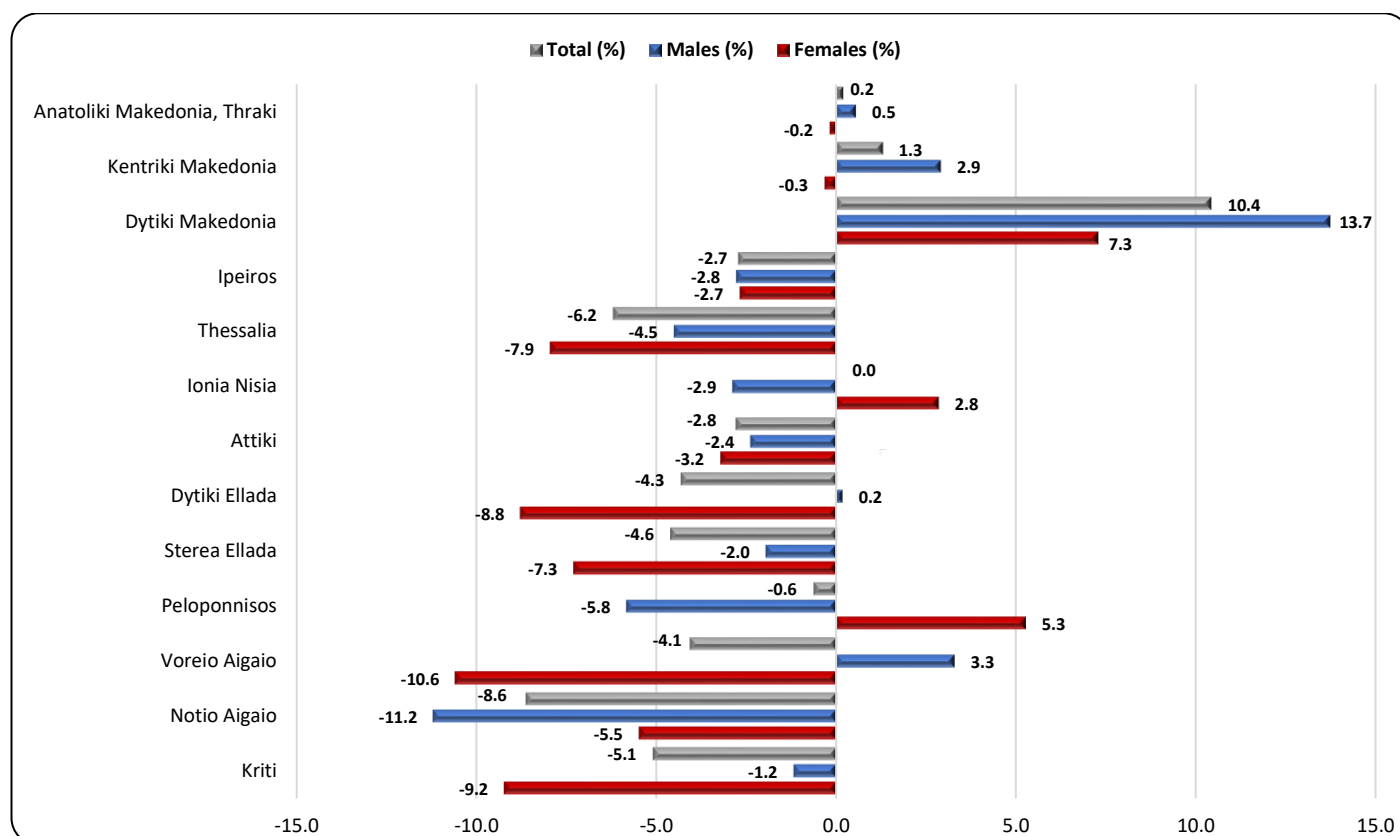
**Table 4. Deaths by age group and sex, weeks 1<sup>st</sup> - 14<sup>th</sup>, 2025 and 2026**

Age Group	2025*			2026*		
	Total	Males	Females	Total	Males	Females
0 - 4	76	41	35	56	29	27
5 - 9	10	6	4	6	2	4
10 - 14	9	4	5	12	5	7
15 - 19	30	24	6	36	26	10
20 - 24	55	43	12	30	24	6
25 - 29	46	35	11	52	37	15
30 - 34	73	53	20	63	46	17
35 - 39	96	66	30	86	55	31
40 - 44	180	117	63	197	130	67
45 - 49	377	261	116	327	223	104
50 - 54	638	413	225	617	400	217
55 - 59	1,085	742	343	1,001	673	328
60 - 64	1,493	1,009	484	1,414	955	459
65 - 69	2,166	1,448	718	2,051	1,315	736
70 - 74	3,012	1,919	1,093	3,012	1,927	1,085
75 - 79	4,448	2,556	1,892	4,360	2,541	1,819
80 - 84	5,329	2,723	2,606	5,283	2,767	2,516
85 - 89	7,752	3,357	4,395	7,573	3,372	4,201
90+	9,511	3,492	6,019	9,428	3,561	5,867
Unknown	7	7	0	0	0	0
<b>Total</b>	<b>36,393</b>	<b>18,316</b>	<b>18,077</b>	<b>35,604</b>	<b>18,088</b>	<b>17,516</b>

\*Provisional data

As regards the breakdown of the total number of deaths by age group of the deceased for the first fourteen (14) weeks of 2026, compared to the corresponding period of the year 2025, a decrease of deaths is observed in fourteen (14) age groups and an increase in four (4). The most notable decreases, in absolute figures, compared to the corresponding period of 2025, are observed for the age groups of 85 to 89 (179 deaths), 65 to 69 (115 deaths) and 75 to 79 (88 deaths), whereas the biggest increase is observed for the age group of 40 to 44 (17 deaths) (Table 4).

**Graph 6. Annual change of deaths 2026\*/2025\* (%) by sex and Region of usual residence, weeks 1<sup>st</sup> - 14<sup>th</sup>**



\*Provisional data

**Table 5. Deaths by sex and Region of usual residence, weeks 1<sup>st</sup> - 14<sup>th</sup>, 2025 and 2026**

Region	2025*			2026*			Change (%)		
	Total	Males	Females	Total	Males	Females	Total	Males	Females
An. Makedonia, Thraki	2,161	1,091	1,070	2,165	1,097	1,068	0.2	0.5	-0.2
Kentriki Makedonia	6,108	3,058	3,050	6,187	3,147	3,040	1.3	2.9	-0.3
Dytiki Makedonia	911	444	467	1,006	505	501	10.4	13.7	7.3
Ipeiros	1,173	577	596	1,141	561	580	-2.7	-2.8	-2.7
Thessalia	2,628	1,332	1,296	2,465	1,272	1,193	-6.2	-4.5	-7.9
Ionia Nisia	768	382	386	768	371	397	0.0	-2.9	2.8
Attiki	12,467	6,219	6,248	12,118	6,071	6,047	-2.8	-2.4	-3.2
Dytiki Ellada	2,267	1,127	1,140	2,169	1,129	1,040	-4.3	0.2	-8.8
Stereia Ellada	2,037	1,023	1,014	1,943	1,003	940	-4.6	-2.0	-7.3
Peloponnisos	2,192	1,167	1,025	2,178	1,099	1,079	-0.6	-5.8	5.3
Voreio Aigaio	712	334	378	683	345	338	-4.1	3.3	-10.6
Notio Aigaio	974	536	438	890	476	414	-8.6	-11.2	-5.5
Kriti	1,981	1,016	965	1,880	1,004	876	-5.1	-1.2	-9.2
Unknown	14	10	4	11	8	3	-21.4	-20.0	-25.0
<b>Total</b>	<b>36,393</b>	<b>18,316</b>	<b>18,077</b>	<b>35,604</b>	<b>18,088</b>	<b>17,516</b>	<b>-2.2</b>	<b>-1.2</b>	<b>-3.1</b>
Abroad	109	64	45	121	74	47	11.0	15.6	4.4

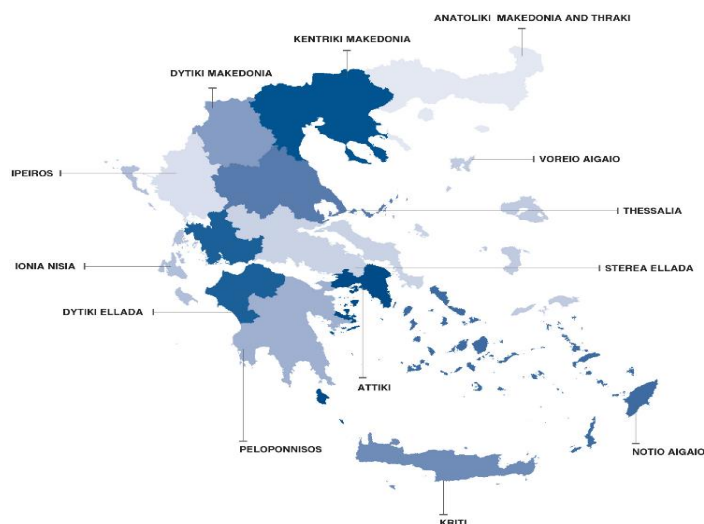
\* Provisional data

As regards the breakdown of the total number of deaths by Region of usual residence of the deceased for the first fourteen (14) weeks of 2026 compared to the corresponding period of the year 2025, a decrease of deaths is observed in nine (9) out of thirteen (13) Regions of the Country. The most notable decreases, in absolute figures, are observed in the Regions of Attiki, Thessalia and Kriti by 349, 163 and 101 deaths respectively, whereas the biggest increase is observed in the Region of Dytiki Makedonia by 95 deaths (Graph 6, Table 5).

## EXPLANATORY NOTES

<b>Data on weekly deaths (Vital Statistics Survey)</b>	In the context of the Vital Statistics Survey, data presented in this publication refer to the weekly evolution of death counts according to the international standard of weeks ISO8601 and are drawn from civil registry acts issued by the Municipal Authorities. ELSTAT proceeds with the processing of death data for the purpose of depicting the evolution of deaths in the Country, even using provisional data, and timely recording of mortality levels in relation to basic demographic variables (sex, age, place of usual residence).
<b>Reference periods</b>	2025: 30/12/2024 - 06/04/2025 2026: 29/12/2025 - 05/04/2026
<b>Legal Framework</b>	Law 344/76 concerning the “Registration of vital events” which lays down the obligations of the Civil Register Offices to collect and then transmit the data, as well as by Law 3832/2010 on the “Greek Statistical System (EL.S.S.), Establishment of the Hellenic Statistical Authority (EL.STAT.) as an independent authority”, both as amended and in force.
<b>Coverage</b>	The Vital Statistics Survey is an exhaustive survey and covers all deaths of usual resident population that occur in the Greek territory.
<b>Definitions</b>	All deaths of usual residents taking place in the Greek territory are recorded, regardless of the cause of death. Deaths of usual resident population of other countries are also recorded but not counted. The deaths of migrant-refugees in the Greek territory during their attempt to approach European countries are not included.
<b>Methodology</b>	Provisional data on deaths undergo the necessary quality checks, they are processed and presented in the form of tables.
<b>Geographical classification</b>	Geographical classification is based on the Nomenclature of Territorial Units for Statistics (NUTS). Data are disseminated at Country and Region (NUTS 2) level.

**Map of the Regions (NUTS 2) of Greece**



**International  
Standard of Dates**

According to the international standard of dates ISO8601, the first fourteen (14) weeks of 2025 and 2026 are defined as follows:

WEEK	2025	2026
1 <sup>st</sup>	30/12/2024 - 05/01/2025	29/12/2025 - 04/01/2026
2 <sup>nd</sup>	06/01/2025 - 12/01/2025	05/01/2026 - 11/01/2026
3 <sup>rd</sup>	13/01/2025 - 19/01/2025	12/01/2026 - 18/01/2026
4 <sup>th</sup>	20/01/2025 - 26/01/2025	19/01/2026 - 25/01/2026
5 <sup>th</sup>	27/01/2025 - 02/02/2025	26/01/2026 - 01/02/2026
6 <sup>th</sup>	03/02/2025 - 09/02/2025	02/02/2026 - 08/02/2026
7 <sup>th</sup>	10/02/2025 - 16/02/2025	09/02/2026 - 15/02/2026
8 <sup>th</sup>	17/02/2025 - 23/02/2025	16/02/2026 - 22/02/2026
9 <sup>th</sup>	24/02/2025 - 02/03/2025	23/02/2026 - 01/03/2026
10 <sup>th</sup>	03/03/2025 - 09/03/2025	02/03/2026 - 08/03/2026
11 <sup>th</sup>	10/03/2025 - 16/03/2025	09/03/2026 - 15/03/2026
12 <sup>th</sup>	17/03/2025 - 23/03/2025	16/03/2026 - 22/03/2026
13 <sup>th</sup>	24/03/2025 - 30/03/2025	23/03/2026 - 29/03/2026
14 <sup>th</sup>	31/03/2025 - 06/04/2025	30/03/2026 - 05/04/2026

**References** More information on deaths and Vital Statistics is available on the website of ELSTAT:  
<https://www.statistics.gr/en/statistics/pop>  
following the link: "Statistics / Population and Social Conditions / Demography".