



PRESS RELEASE

Monitoring the work on Social Care and Protection Units: year 2017 (biennial)

The Hellenic Statistical Authority (ELSTAT) announces the data of the Survey on Social Care Units (legal entities of public law), of year 2017. The survey is carried out every two years and aims at collecting non-financial data of these units, such as data on their personnel as well as the number of persons hosted by the units or receiving their services.

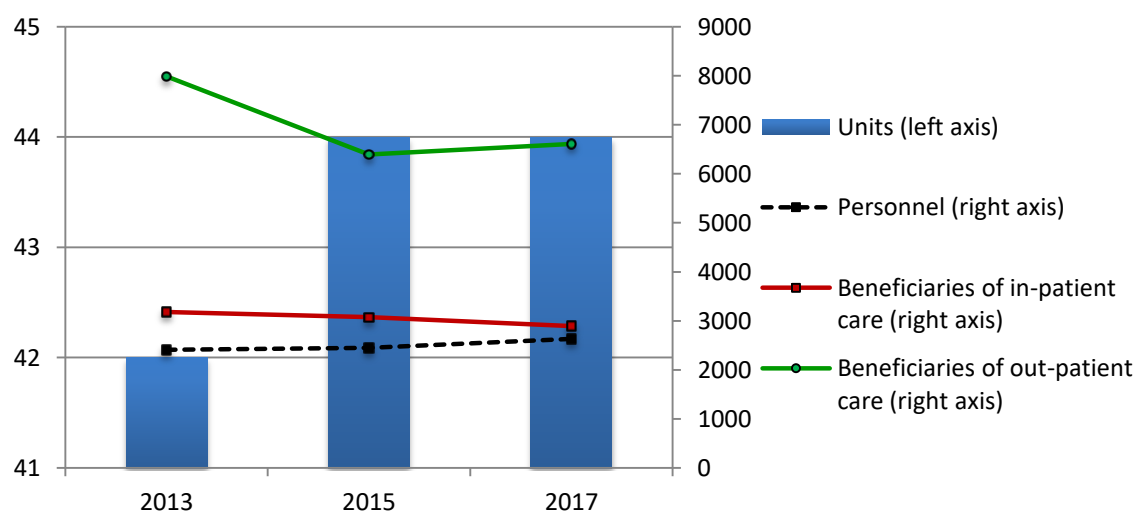
On the basis of the available survey data, the number of Social Care Units in 2017 amounted to 44 same as in 2015 (Graph 1). These units offer social protection to persons with special needs, to children, to elderly, people with chronic diseases, to refugees etc. The majority of the units (47.7%) provide their services to people with disabilities or chronic diseases (Table 1, Graph 2).

The total number of persons employed in the Social Care Units, in 2017, amounted to 2,632 compared to 2,446 in year 2015 presenting an increase of 7.6% while the respective increase between 2015 and 2013 was 1.4% (Table 2, Graph 3).

In 2017, the number of beneficiaries of in-patient care services amounted to 2,894 compared to 3,078 in the year 2013 presenting a decrease of 6.0% while the respective decrease between the years 2015 and 2013 was 3.1% (Table 3, Graph 4).

The out-patient beneficiaries in 2017 amounted to 7,946 compared to 6,394 in 2015 presenting an increase of 24.3% while between the years 2015 and 2013 there was noted a decrease of 19.9% (Table 4, Graph 5).

Graph 1. Social Care Units: Total number of units, persons employed and beneficiaries (2013-2017)



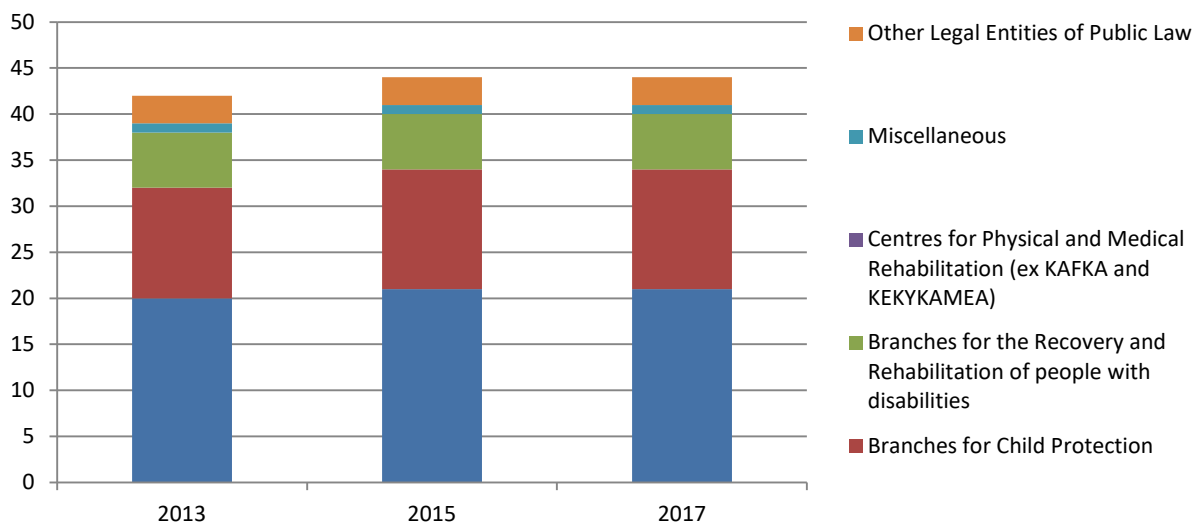
Information

Division of Social Statistics
Section of Health and Social Security and Protection Statistics
Alexandra Zografou,
Tel: +30 213 135 2785 E-mail: social_stat@statistics.gr

Table 1. Number of Social Care Units by category (2013-2017)

CATEGORY	NUMBER OF UNITS		
	2013	2015	2017
Branches for People with disabilities / Chronic diseases	20	21	21
Branches for Child Protection	12	13	13
Branches for the Recovery and Rehabilitation of people with disabilities	6	6	6
Miscellaneous	1	1	1
Other Legal Entities of Public Law ¹	3	3	3
Total	42	44	44

Graph 2. Number of Social Care Units by category (2013-2017)



¹Other Legal Entities of Public Law: they include the National Centre for Social Solidarity (EKKA), the National Foundation for the Deaf (EIK) and the Centre for Education and Rehabilitation for the Blind (KEAT).

Table 2. Persons employed in Social Care Units, by category of units (2013-2017)

CATEGORY	PERSONS EMPLOYED				
	2013	2015	% change (2015/2013)	2017	% change (2017/2015)
Branches for People with disabilities / Chronic diseases	1,290	1,198	-7.1	1,227	2.4
Branches for Child Protection	457	471	3.1	732	55.4
Branches for the Recovery and Rehabilitation of people with disabilities	507	595	17.4	492	-17.3
Miscellaneous	20	21	5.0	23	9.5
Other Legal Entities of Public Law	139	161	15.8	158	-1.9
Total	2,413	2,446	1.4	2,632	7.6

Graph 3. Persons employed in Social Care Units, by category of units (2013-2017)

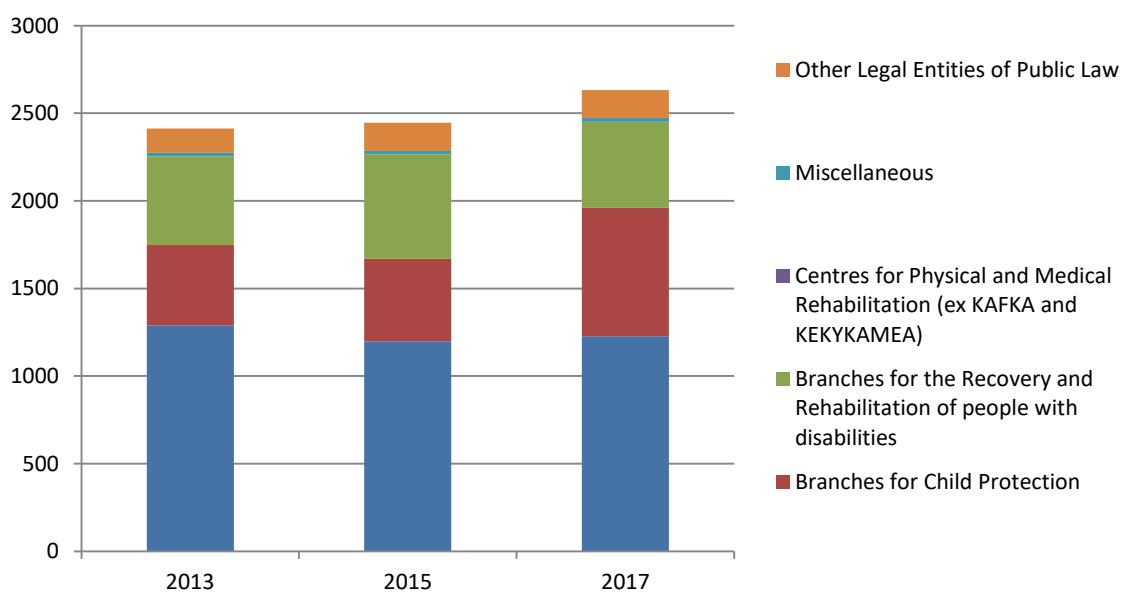


Table 3. Beneficiaries of in-patient care services in Social Care Units, by category of units (2013-2017)

CATEGORY	BENEFICIARIES OF IN-PATIENT CARE SERVICES				
	2013	2015	% change (2015/2013)	2017	% change (2017/2015)
Branches for People with disabilities / Chronic diseases	1,690	1,678	-0.7	1,642	-2.1
Branches for Child Protection	532	571	7.3	575	0.7
Branches for the Recovery and Rehabilitation of people with disabilities	476	426	-10.5	460	8.0
Other Legal Entities of Public Law	480	403	-16.0	217	-46.2
Total	3,178	3,078	-3.1	2,894	-6.0

Graph 4. Beneficiaries of in-patient care services in Social Care Units, by category of units (2013-2017)

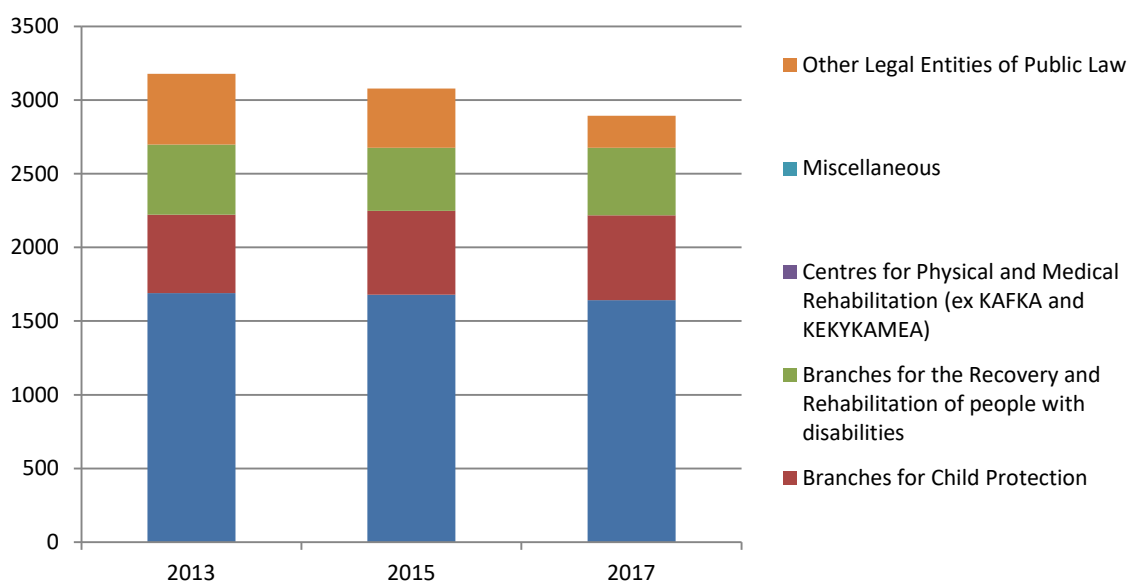
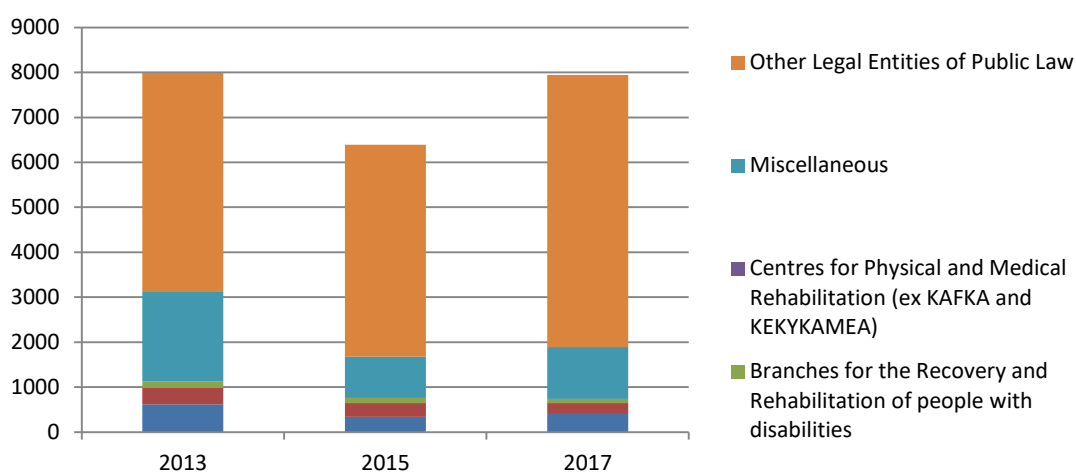


Table 4. Beneficiaries of out-patient care services in Social Care Units, by category of units (2013-2017)

CATEGORY	BENEFICIARIES OF OUT-PATIENT CARE SERVICES				
	2013	2015	% change (2015/2013)	2017	% change (2017/2015)
Branches for People with disabilities / Chronic diseases	615	339	-44.9	405	19.5
Branches for Child Protection	368	305	-17.1	237	-22.3
Branches for the Recovery and Rehabilitation of people with disabilities	145	114	-21.4	99	-13.2
Miscellaneous	1,991	920	-53.8	1,150	25.0
Other Legal Entities of Public Law	4,866	4,716	-3.1	6,055	28.4
Total	7,985	6,394	-19.9	7,946	24.3

Graph 5. Beneficiaries of out-patient care services in Social Care Units, by category of units (2013-2017)



EXPLANATORY NOTES

Purpose of the Survey on Social Care Units The Survey on Social Care Units monitors, at a biennial basis, the number of Social Care Units all over Greece. It is a census survey aiming at collecting non-financial data concerning the Social Care Units that operate as Legal Entities of Public Law. This survey collects data on the characteristics of the in-patient or out-patient care Units, data on their personnel and on the number of beneficiaries of the services of the Units.

Legal Framework The survey is conducted pursuant to the Law 3832/2010, as amended and in force.

Reference period The survey refers to the social care units that were operating on the 31st of December of the reference year.

Coverage The survey covers Greece total. The data are collected at the level of the Region (NUTS 2). The Legal Entities of Public Law include: Branches of Centres for Chronic Diseases, Branches of Centres for the Recovery and Rehabilitation of People with Disabilities, Branches of Centres for the Protection of Children, Independent Legal Entities of Public Law and others. Based on the Law 4025/2011 (Article 1) on the “Reconstruction of the National Social Welfare System”, as amended by the Law 4109/2013 (Article 9), the units that used to be Legal Entities of Public Law have merged and are now operating as branches of the new Regional Social Welfare Centres, which amount to 12 (one centre per NUTS 2 Region, except for the Region of Peloponnisos). Each Regional Social Welfare Centre encompasses the corresponding units or branches for People with Disabilities or for Chronic Diseases, units for the Protection of Children and units or branches for the Recovery and Rehabilitation of People with Disabilities. The rehabilitation services provided by the Centres for Recovery and Physical and Social Rehabilitation (KAFKA) and KEKYKAMEA were transferred to the National Health System and the public hospitals and are now provided through the Centres for Physical and Medical Rehabilitation (KEFIAP). After this change, the units reduced from 95 in period 2007-2011 to 42 in year 2013.

Methodology The survey is a census survey covering all the Social Care Units and records the in-patient and out-patient welfare services provided by the State.

Definitions

- Out-patient care means care services provided to adults or minors who need help; these services are provided in a specific facility that operates during specific hours during the day (excluding overnight stay), e.g., provision of day care services to children whose family cannot fulfill their parental role on account of economic or other reasons.
- In-patient care means the care services provided to vulnerable population groups who stay on a permanent or provisional basis in a specific facility (institution, unit), which covers, firstly, their basic needs (shelter, food) and, secondly, their sentimental or psychological social needs, e.g. children cities, homes for the elderly, etc.
- Personnel include all the persons employed in the social care units including permanent personnel and those working under contract of limited or unlimited duration.

- Beneficiaries are the people who are entitled to receive material, psychological or sentimental care services provided by the Social Care Units.

References More information on the survey on Social Care Units can be found on the website of ELSTAT, at: <http://www.statistics.gr/el/statistics/-/publication/SHE27/->