



INDUSTRIAL PRODUCTION INDEX February 2026, y-o-y increase of 1.8%

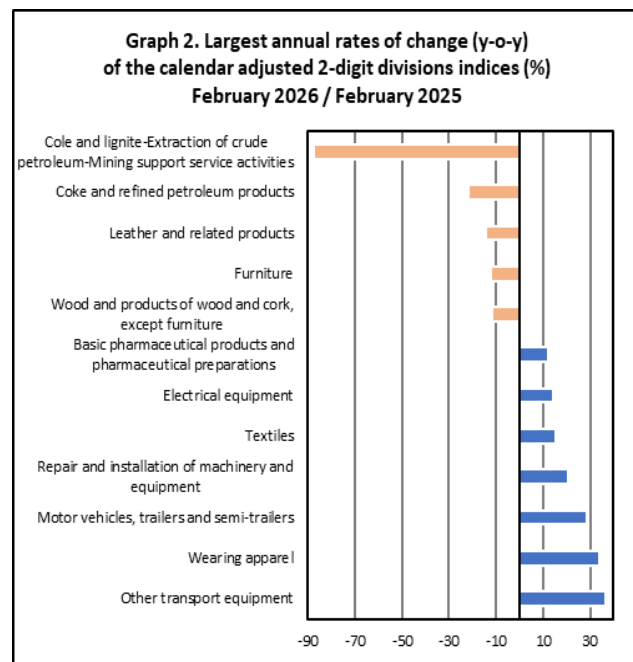
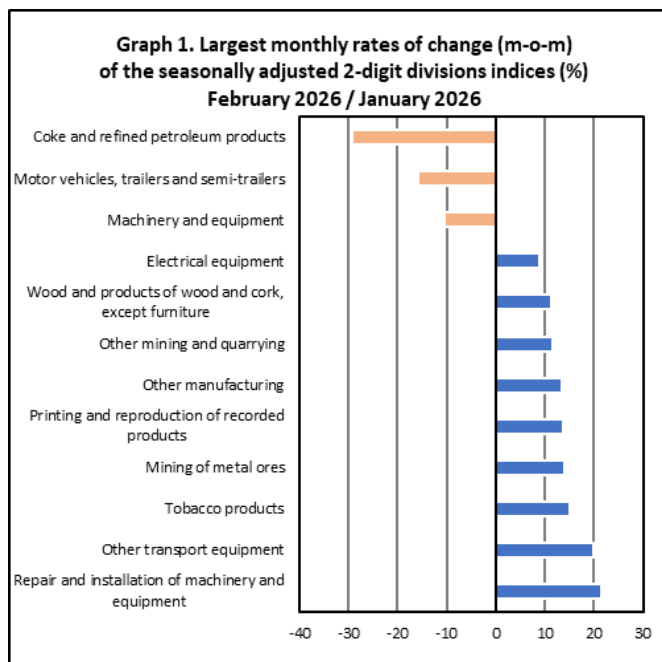
The Hellenic Statistical Authority announces the Industrial Production Index (IPI) with base year 2021=100.0 for February 2026, the evolution of which, on the basis of provisional and working day adjusted data, is as follows:

The Overall Industrial Production Index in February 2026 recorded an increase of 1.8% compared with February 2025. The Overall IPI in February 2025 increased by 6.7% compared with the corresponding index in February 2024 (Table 1).

The average Overall Industrial Production Index for the period from January to February 2026 recorded an increase of 3.6% compared with the average IPI of the period from January to February 2025 (Table 2).

The seasonally adjusted Overall Industrial Production Index in February 2026 recorded a decrease of 0.9% compared with the corresponding index of January 2026 (Table 4).

The index of coke and refined petroleum products division showed the greatest percentage decrease, whereas the index of repair and installation of machinery and equipment division recorded the greatest percentage increase in February 2026 compared with January 2026. Comparing the indices of February 2026 with the corresponding indices of February 2025, the greatest percentage increase was recorded in other transport equipment division, while the highest percentage decrease was recorded in mining of coal and lignite – extraction of crude petroleum and natural gas – mining support service activities division (Tables 1 and 4).



Information on methodological issues:

Business Statistics Division
Manufacture-Construction Indices and Industrial Products Section
Head of the Section: Vlachokosta Evrydiki
Tel: +30 213 135 2056
E-mail: e.vlachokosta@statistics.gr

Information on data provision:

Tel: +30 213 135 2025, 2308, 2310
E-mail: data.dissem@statistics.gr

Evolution of the Industrial Production Index in February 2026

I. Annual changes: February 2026 / February 2025 (Table 1)

The 1.8% increase of the working day adjusted Overall IPI in February 2026, compared with the corresponding index in February 2025, is due to the annual changes of the sub-indices in the following industrial sections:

Increase of:

- 2.9% in the Manufacturing Index. The increase was mainly the result of the annual changes of the sub-indices in the following 2-digit divisions: other transport equipment, wearing apparel, motor vehicles, trailers and semi-trailers, repair and installation of machinery and equipment, textiles.

Decrease of:

- 1.0% in the Water Supply Index.
- 1.4 in the Electricity Supply Index.
- 8.4% in the Mining and Quarrying Index. The decrease was the result of the annual changes of the sub-indices in the following 2-digit divisions: mining of coal and lignite - extraction of crude petroleum and natural gas - mining support service activities, other mining and quarrying.

II. Rates of change of the average index of the period January - February 2026 compared with the corresponding index of the period January - February 2025 (Table 2)

The 3.6% increase of the working day adjusted average Overall IPI in the 2-month period January - February 2026, compared with the corresponding index in January - February 2025, is due to the corresponding rates of change of the sub-indices in the following industrial sections:

Increase of:

- 9.9% in the Electricity Supply Index.
- 2.3% in the Manufacturing Index.

Decrease of:

- 2.2% in the Water Supply Index.
- 11.9% in the Mining and Quarrying Index.

III. Monthly changes: February 2026 / January 2026 (Table 4)

The 0.9% decrease of the seasonally adjusted Overall IPI in February 2026, compared with the corresponding index in January 2026, is due to the monthly changes of the sub-indices in the following industrial sections:

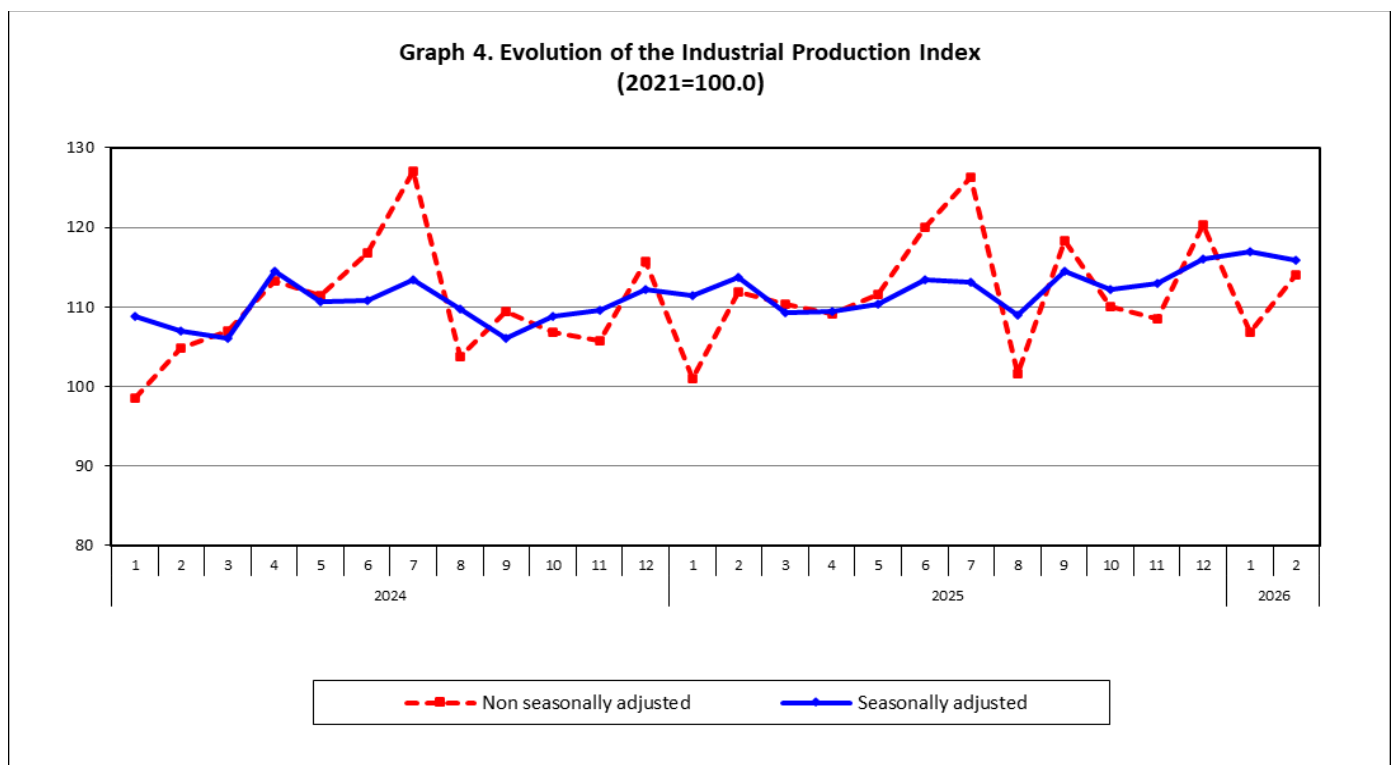
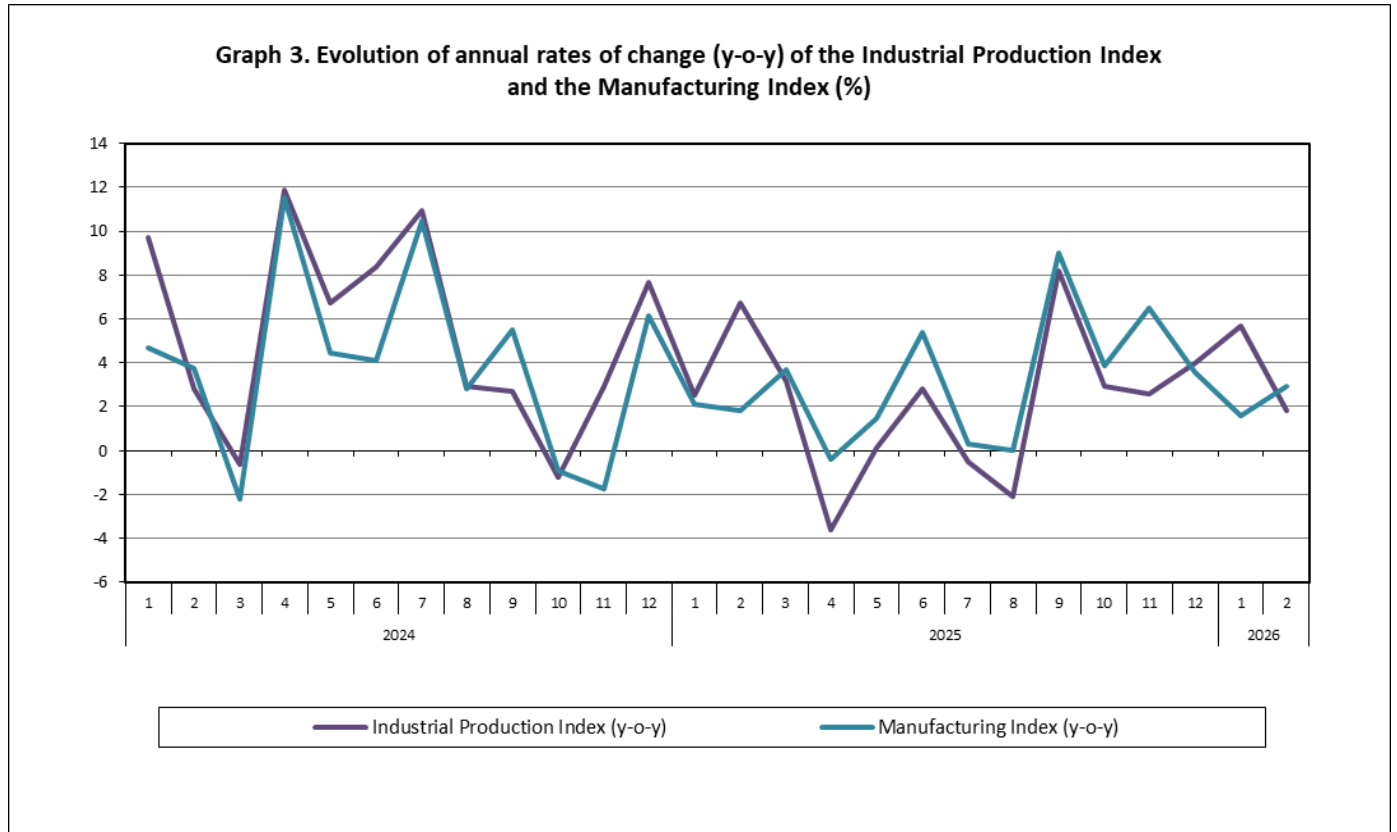
Decrease of:

- 5.9% in the Electricity Supply Index.

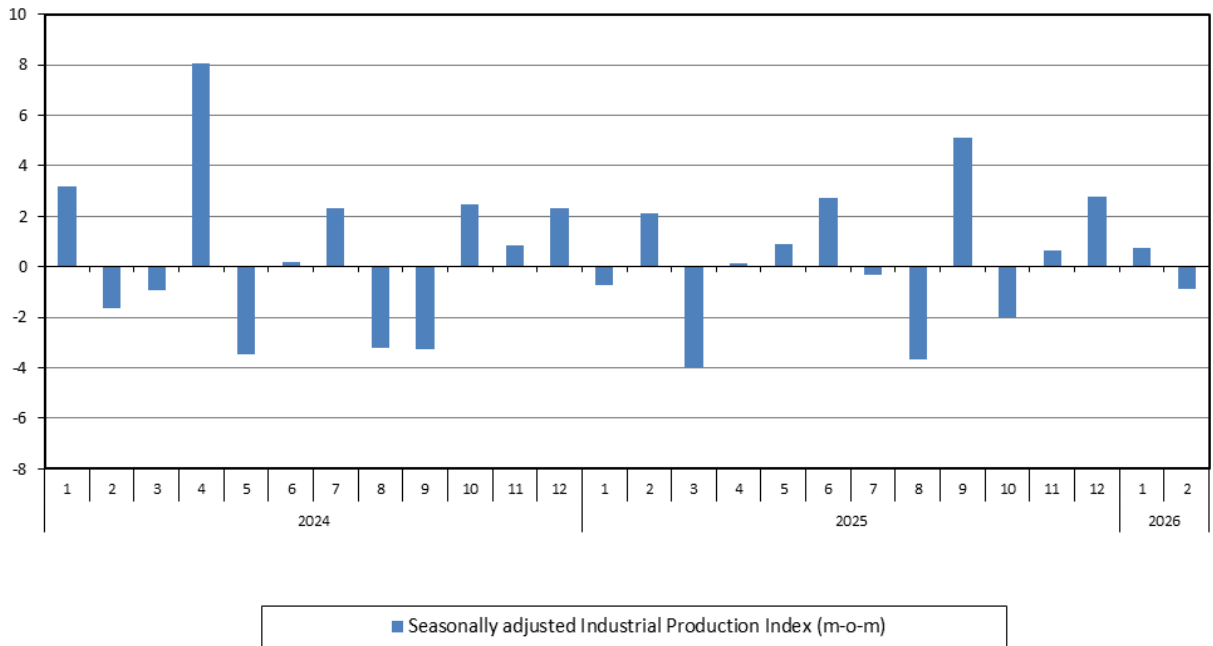
Increase of:

- 1.0% in the Manufacturing Index.
- 1.3% in the Water Supply Index.
- 10.6% in the Mining and Quarrying Index.

The following graphs depict the annual rates of change (y-o-y) of the Industrial Production Index and the Manufacturing Index, the evolution of the seasonally and non-seasonally adjusted Overall Industrial Production Index, as well as the monthly rates of change (m-o-m) of the seasonally adjusted index.



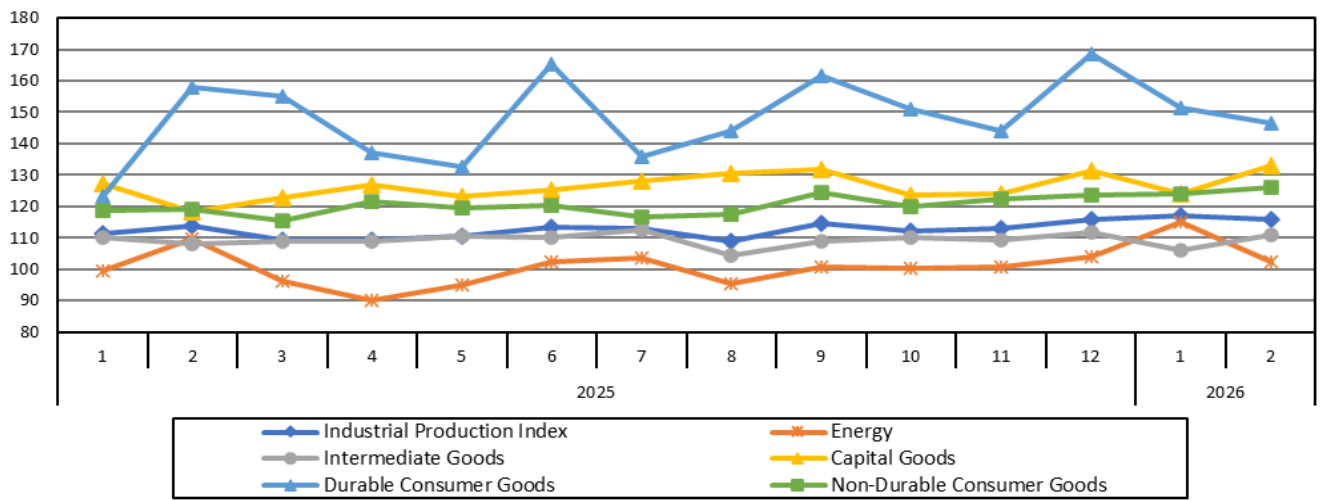
Graph 5. Evolution of the monthly rates of change (m-o-m) of the seasonally adjusted Industrial Production Index (%)



It should be noted that the time series with the seasonally adjusted indices is recalculated every time a new observation is added in the time series. Therefore, the seasonally adjusted data differ from the data published in the previous Announcement.

The following graphs depict the evolution of the seasonally adjusted Industrial Production Index and the Main Industrial Groupings, as well as the evolution of the Industrial Production Index and the Industrial Sections Indices.

Graph 6. Evolution of the seasonally adjusted Industrial Production Index and the Main Industrial Groupings Indices, January 2025 - February 2026 (2021=100.0)



**Graph 7. Evolution of the Industrial Production Index and the Industrial Section Indices
(2021=100.0)**

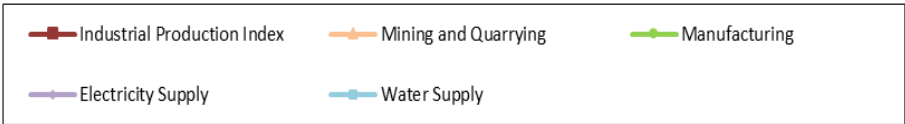
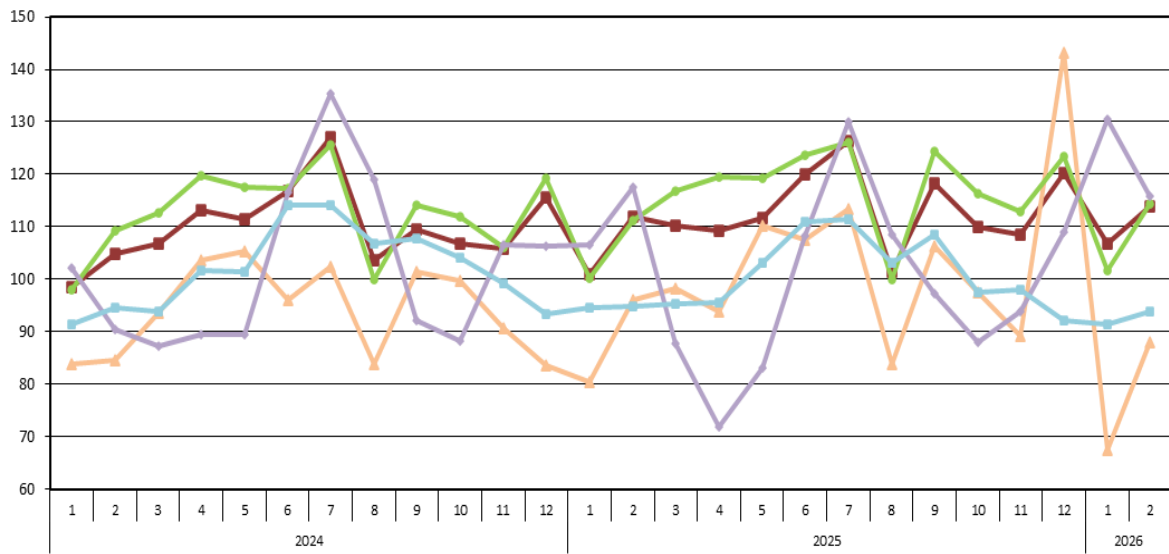


Table 1. Annual rates of change of the Industrial Production Index*(Working day adjusted data, according to the real number of working days)*

Base year: 2021=100.0

Code	Division	February			Rate of change (%)	
		2026*	2025*	2024	2026/2025	2025/2024
OVERALL INDEX		113.96	111.94	104.89	1.8	6.7
B	MINING AND QUARRYING	88.06	96.18	84.50	-8.4	13.8
05-06-09	Mining of coal and lignite – Extraction of crude petroleum and natural gas – Mining support service activities	16.34	130.09	83.44	-87.4	55.9
07	Mining of metal ores	89.46	81.91	101.56	9.2	-19.3
08	Other mining and quarrying	91.67	96.31	82.26	-4.8	17.1
C	MANUFACTURING	114.47	111.22	109.26	2.9	1.8
10	Food	120.04	113.06	104.09	6.2	8.6
11	Beverages	82.20	92.19	93.17	-10.8	-1.1
12	Tobacco products	171.86	168.16	151.34	2.2	11.1
13	Textiles	113.35	98.21	103.72	15.4	-5.3
14	Wearing apparel	102.15	76.11	88.11	34.2	-13.6
15	Leather and related products	76.36	88.90	90.14	-14.1	-1.4
16	Wood and products of wood and cork, except furniture	84.32	95.35	107.42	-11.6	-11.2
17	Paper and paper products	106.10	100.06	103.49	6.0	-3.3
18	Printing and reproduction of recorded products	122.59	111.88	123.60	9.6	-9.5
19	Coke and refined petroleum products	77.09	98.42	108.03	-21.7	-8.9
20	Chemicals and chemical products	113.51	108.67	111.80	4.5	-2.8
21	Basic pharmaceutical products and pharmaceutical preparations	154.88	138.06	129.94	12.2	6.2
22	Rubber and plastic products	107.56	105.89	104.01	1.6	1.8
23	Other non-metallic mineral products	124.42	120.87	120.61	2.9	0.2
24	Basic metals	107.58	110.64	104.43	-2.8	5.9
25	Fabricated metal products, except machinery and equipment	97.92	92.83	98.76	5.5	-6.0
26	Computers, electronic and optical products	163.05	169.99	181.54	-4.1	-6.4
27	Electrical equipment	132.72	116.25	109.50	14.2	6.2
28	Machinery and equipment n. e. c.	104.40	99.10	101.67	5.4	-2.5
29	Motor vehicles, trailers and semi-trailers	104.77	81.44	88.90	28.7	-8.4
30	Other transport equipment	93.19	68.34	132.23	36.4	-48.3
31	Furniture	95.46	108.64	98.33	-12.1	10.5
32	Other manufacturing	112.04	102.05	93.68	9.8	8.9
33	Repair and installation of machinery and equipment	148.73	123.06	104.09	20.9	18.2
D	ELECTRICITY SUPPLY	115.74	117.44	90.49	-1.4	29.8
35	Electricity supply	115.74	117.44	90.49	-1.4	29.8
E	WATER SUPPLY	93.82	94.74	94.56	-1.0	0.2
36	Water collection, treatment and supply	93.82	94.74	94.56	-1.0	0.2
MAIN INDUSTRIAL GROUPINGS						
1	Energy	104.00	111.06	95.34	-6.4	16.5
2	Intermediate goods	110.88	107.68	107.64	3.0	0.0
3	Capital goods	119.43	106.02	105.84	12.6	0.2
4	Consumer Durables	127.30	139.44	119.30	-8.7	16.9
5	Consumer Non-Durables	123.32	116.18	110.14	6.1	5.5

* Provisional data

Note: The indices are rounded up to two decimal digits when published and percentage changes up to one decimal digit when published.

Table 2. Average indices of the period January – February and rates of change of the Industrial Production Index
(Working day adjusted data, according to the real number of working days)

		Base year: 2021=100.0				
Code	Division	Average indices of the period Jan.-Feb.			Rate of change (%)	
		2026*	2025*	2024	2026/2025	2025/2024
OVERALL INDEX		110.36	106.49	101.71	3.6	4.7
B	MINING AND QUARRYING	77.82	88.37	84.24	-11.9	4.9
05-06-09	Mining of coal and lignite – Extraction of crude petroleum and natural gas – Mining support service activities	19.42	128.12	101.51	-84.8	26.2
07	Mining of metal ores	79.27	77.77	98.95	1.9	-21.4
08	Other mining and quarrying	80.73	87.69	81.33	-7.9	7.8
C	MANUFACTURING	108.08	105.67	103.64	2.3	2.0
10	Food	115.64	109.27	101.69	5.8	7.5
11	Beverages	76.81	83.31	84.66	-7.8	-1.6
12	Tobacco products	153.30	160.40	141.92	-4.4	13.0
13	Textiles	105.15	94.75	96.01	11.0	-1.3
14	Wearing apparel	94.29	75.81	85.13	24.4	-10.9
15	Leather and related products	65.85	71.24	77.72	-7.6	-8.3
16	Wood and products of wood and cork, except furniture	71.79	91.17	95.37	-21.3	-4.4
17	Paper and paper products	103.71	97.22	102.59	6.7	-5.2
18	Printing and reproduction of recorded products	107.80	107.50	109.79	0.3	-2.1
19	Coke and refined petroleum products	94.49	102.58	107.66	-7.9	-4.7
20	Chemicals and chemical products	103.01	104.23	106.12	-1.2	-1.8
21	Basic pharmaceutical products and pharmaceutical preparations	153.16	132.76	135.96	15.4	-2.3
22	Rubber and plastic products	100.95	101.07	98.06	-0.1	3.1
23	Other non-metallic mineral products	111.98	112.00	110.57	0.0	1.3
24	Basic metals	100.89	106.35	99.14	-5.1	7.3
25	Fabricated metal products, except machinery and equipment	86.33	85.16	89.83	1.4	-5.2
26	Computers, electronic and optical products	133.17	117.03	145.81	13.8	-19.7
27	Electrical equipment	118.95	109.06	101.71	9.1	7.2
28	Machinery and equipment n. e. c.	93.26	84.91	85.66	9.8	-0.9
29	Motor vehicles, trailers and semi-trailers	92.25	76.63	73.73	20.4	3.9
30	Other transport equipment	69.21	56.34	99.56	22.8	-43.4
31	Furniture	80.16	86.35	84.13	-7.2	2.6
32	Other manufacturing	94.42	93.32	81.82	1.2	14.0
33	Repair and installation of machinery and equipment	121.26	118.99	94.47	1.9	26.0
D	ELECTRICITY SUPPLY	123.17	112.04	96.36	9.9	16.3
35	Electricity supply	123.17	112.04	96.36	9.9	16.3
E	WATER SUPPLY	92.61	94.67	93.02	-2.2	1.8
36	Water collection, treatment and supply	92.61	94.67	93.02	-2.2	1.8
MAIN INDUSTRIAL GROUPINGS						
1	Energy	113.51	108.51	99.14	4.6	9.5
2	Intermediate goods	102.28	102.43	100.72	-0.1	1.7
3	Capital goods	101.49	96.28	92.01	5.4	4.6
4	Consumer Durables	104.50	103.68	109.53	0.8	-5.3
5	Consumer Non-Durables	116.89	110.85	106.93	5.4	3.7

* Provisional data

Note: The indices are rounded up to two decimal digits when published and percentage changes up to one decimal digit when published.

Table 3. Monthly rate of change of the Industrial Production Index*(Working day adjusted data, according to the real number of working days)***Base year: 2021=100.0**

Code	Division	February 2026*	January 2026*	Rate of change (%) Feb.2026/Jan.2026
OVERALL INDEX		113.96	106.77	6.7
B	MINING AND QUARRYING	88.06	67.59	30.3
05-06-09	Mining of coal and lignite – Extraction of crude petroleum and natural gas – Mining support service activities	16.34	22.49	-27.3
07	Mining of metal ores	89.46	69.08	29.5
08	Other mining and quarrying	91.67	69.78	31.4
C	MANUFACTURING	114.47	101.69	12.6
10	Food	120.04	111.23	7.9
11	Beverages	82.20	71.43	15.1
12	Tobacco products	171.86	134.75	27.5
13	Textiles	113.35	96.95	16.9
14	Wearing apparel	102.15	86.43	18.2
15	Leather and related products	76.36	55.34	38.0
16	Wood and products of wood and cork, except furniture	84.32	59.27	42.3
17	Paper and paper products	106.10	101.32	4.7
18	Printing and reproduction of recorded products	122.59	93.01	31.8
19	Coke and refined petroleum products	77.09	111.88	-31.1
20	Chemicals and chemical products	113.51	92.50	22.7
21	Basic pharmaceutical products and pharmaceutical preparations	154.88	151.43	2.3
22	Rubber and plastic products	107.56	94.33	14.0
23	Other non-metallic mineral products	124.42	99.54	25.0
24	Basic metals	107.58	94.20	14.2
25	Fabricated metal products, except machinery and equipment	97.92	74.75	31.0
26	Computers, electronic and optical products	163.05	103.30	57.8
27	Electrical equipment	132.72	105.18	26.2
28	Machinery and equipment n. e. c.	104.40	82.12	27.1
29	Motor vehicles, trailers and semi-trailers	104.77	79.73	31.4
30	Other transport equipment	93.19	45.23	106.1
31	Furniture	95.46	64.85	47.2
32	Other manufacturing	112.04	76.80	45.9
33	Repair and installation of machinery and equipment	148.73	93.79	58.6
D	ELECTRICITY SUPPLY	115.74	130.61	-11.4
35	Electricity supply	115.74	130.61	-11.4
E	WATER SUPPLY	93.82	91.40	2.6
36	Water collection, treatment and supply	93.82	91.40	2.6
MAIN INDUSTRIAL GROUPINGS				
1	Energy	104.00	123.01	-15.5
2	Intermediate goods	110.88	93.69	18.4
3	Capital goods	119.43	83.54	43.0
4	Consumer Durables	127.30	81.71	55.8
5	Consumer Non-Durables	123.32	110.46	11.6

* Provisional data

Note: The indices are rounded up to two decimal digits when published and percentage changes up to one decimal digit when published.

Table 4. Monthly rate of change of the seasonally adjusted Industrial Production Index

Base year: 2021=100.0

Code	Division	February 2026*	January 2026*	Rate of change (%) Feb. 2026/Jan. 2026
OVERALL INDEX		115.88	116.89	-0.9
B	MINING AND QUARRYING	95.75	86.54	10.6
05-06-09	Mining of coal and lignite – Extraction of crude petroleum and natural gas – Mining support service activities	-	-	-
07	Mining of metal ores	94.50	82.85	14.1
08	Other mining and quarrying	106.21	95.19	11.6
C	MANUFACTURING	117.79	116.58	1.0
10	Food	125.14	124.22	0.7
11	Beverages	97.24	100.61	-3.3
12	Tobacco products	167.59	145.76	15.0
13	Textiles	111.79	108.94	2.6
14	Wearing apparel	94.81	88.09	7.6
15	Leather and related products	86.23	93.70	-8.0
16	Wood and products of wood and cork, except furniture	86.27	77.45	11.4
17	Paper and paper products	106.60	106.69	-0.1
18	Printing and reproduction of recorded products	126.40	111.25	13.6
19	Coke and refined petroleum products	77.54	109.68	-29.3
20	Chemicals and chemical products	110.63	104.83	5.5
21	Basic pharmaceutical products and pharmaceutical preparations	149.74	154.33	-3.0
22	Rubber and plastic products	105.55	104.21	1.3
23	Other non-metallic mineral products	129.43	122.78	5.4
24	Basic metals	102.07	96.93	5.3
25	Fabricated metal products, except machinery and equipment	107.77	101.26	6.4
26	Computers, electronic and optical products	158.14	160.92	-1.7
27	Electrical equipment	136.39	125.35	8.8
28	Machinery and equipment n. e. c.	110.31	123.05	-10.3
29	Motor vehicles, trailers and semi-trailers	123.65	147.01	-15.9
30	Other transport equipment	148.52	123.96	19.8
31	Furniture	110.14	113.56	-3.0
32	Other manufacturing	125.31	110.41	13.5
33	Repair and installation of machinery and equipment	162.81	133.87	21.6
D	ELECTRICITY SUPPLY	111.55	118.60	-5.9
35	Electricity supply	111.55	118.60	-5.9
E	WATER SUPPLY	100.72	99.48	1.3
36	Water collection, treatment and supply	100.72	99.48	1.3
MAIN INDUSTRIAL GROUPINGS				
1	Energy	102.50	114.89	-10.8
2	Intermediate goods	111.07	106.14	4.6
3	Capital goods	132.82	124.13	7.0
4	Consumer Durables	146.47	151.27	-3.2
5	Consumer Non-Durables	126.02	124.17	1.5

Notes:

1. The indices are rounded up to two decimal digits when published and percentage changes up to one decimal digit when published.
2. The whole time-series with seasonally adjusted indices is recalculated every time a new observation is added in the time-series.
3. The composed index of divisions 05-06-09 is not seasonally adjusted.

Table 5. Evolution of the Overall Industrial Production Index
(Working day adjusted data, according to the real number of working days)

Base year: 2021=100.0

Year and month	Overall Index	Monthly rate of change (%)	Annual rate of change (%)	12-month average index (moving average)	Rate of change of the 12-month average index (%)
2024: 1	98.53	-8.3	9.7	105.14	2.6
2	104.89	6.4	2.8	105.38	2.6
3	106.92	1.9	-0.7	105.32	2.5
4	113.22	5.9	11.9	106.32	3.2
5	111.42	-1.6	6.7	106.91	3.6
6	116.74	4.8	8.4	107.66	4.5
7	127.03	8.8	11.0	108.70	5.7
8	103.70	-18.4	2.9	108.95	5.9
9	109.39	5.5	2.7	109.19	6.1
10	106.86	-2.3	-1.2	109.08	5.1
11	105.77	-1.0	2.9	109.33	5.1
12	115.70	9.4	7.7	110.01	5.4
Annual average	110.01				
2025*: 1	101.02	-12.7	2.5	110.22	4.8
2	111.94	10.8	6.7	110.81	5.2
3	110.29	-1.5	3.2	111.09	5.5
4	109.13	-1.1	-3.6	110.75	4.2
5	111.57	2.2	0.1	110.76	3.6
6	120.04	7.6	2.8	111.04	3.1
7	126.36	5.3	-0.5	110.98	2.1
8	101.56	-19.6	-2.1	110.80	1.7
9	118.34	16.5	8.2	111.55	2.2
10	109.99	-7.1	2.9	111.81	2.5
11	108.50	-1.4	2.6	112.04	2.5
12	120.31	10.9	4.0	112.42	2.2
Annual average	112.42				
2026*: 1	106.77	-11.3	5.7	112.90	2,4
2	113,96	6.7	1.8	113.07	2.0

* Provisional data

Note: The indices are rounded up to two decimal digits when published and percentage changes up to one decimal digit when published.

Table 6. Monthly evolution of the seasonally adjusted Overall Industrial Production Index and Main Industrial Groupings

Base year: 2021=100.0

Year and month	Overall Index		Energy		Intermediate goods		Capital goods		Consumer durables		Consumer non-durables		
	Index	Monthly rate of change (%)	Index	Monthly rate of change (%)	Index	Monthly rate of change (%)	Index	Monthly rate of change (%)	Index	Monthly rate of change (%)	Index	Monthly rate of change (%)	
2024:	1	108.80	3.2	97.12	5.6	106.01	-0.1	114.25	-6.8	170.12	36.4	116.91	4.9
	2	107.01	-1.7	94.23	-3.0	107.97	1.9	117.95	3.2	138.86	-18.4	113.08	-3.3
	3	105.99	-0.9	98.29	4.3	102.87	-4.7	113.98	-3.4	144.01	3.7	111.42	-1.5
	4	114.55	8.1	112.33	14.3	107.67	4.7	120.81	6.0	157.27	9.2	118.42	6.3
	5	110.58	-3.5	106.27	-5.4	102.95	-4.4	117.19	-3.0	153.55	-2.4	116.91	-1.3
	6	110.79	0.2	111.94	5.3	102.74	-0.2	113.66	-3.0	127.04	-17.3	115.05	-1.6
	7	113.36	2.3	107.76	-3.7	105.95	3.1	120.57	6.1	150.65	18.6	120.88	5.1
	8	109.70	-3.2	103.40	-4.0	103.31	-2.5	109.45	-9.2	125.85	-16.5	120.17	-0.6
	9	106.11	-3.3	93.32	-9.8	105.42	2.0	113.78	4.0	137.49	9.3	114.54	-4.7
	10	108.74	2.5	96.64	3.6	106.28	0.8	124.92	9.8	125.32	-8.9	116.68	1.9
	11	109.65	0.8	105.93	9.6	104.98	-1.2	116.14	-7.0	134.49	7.3	113.97	-2.3
	12	112.20	2.3	100.70	-4.9	109.67	4.5	126.75	9.1	158.21	17.6	118.36	3.9
Annual average		109.79		102.33		105.49		117.45		143.57		116.37	
2025:	1	111.37	-0.7	99.42	-1.3	109.95	0.3	127.10	0.3	123.38	-22.0	118.64	0.2
	2	113.75	2.1	109.50	10.1	107.89	-1.9	118.32	-6.9	158.03	28.1	118.96	0.3
	3	109.25	-4.0	96.25	-12.1	108.74	0.8	122.74	3.7	155.22	-1.8	115.33	-3.1
	4	109.41	0.1	89.88	-6.6	109.04	0.3	126.76	3.3	136.97	-11.8	121.36	5.2
	5	110.41	0.9	94.94	5.6	110.59	1.4	123.29	-2.7	132.49	-3.3	119.66	-1.4
	6	113.41	2.7	102.13	7.6	110.30	-0.3	125.39	1.7	165.33	24.8	120.23	0.5
	7	113.04	-0.3	103.58	1.4	112.71	2.2	128.07	2.1	135.94	-17.8	116.66	-3.0
	8	108.91	-3.7	95.50	-7.8	104.17	-7.6	130.58	2.0	144.12	6.0	117.50	0.7
	9	114.46	5.1	100.82	5.6	109.03	4.7	131.64	0.8	161.70	12.2	124.35	5.8
	10	112.18	-2.0	100.14	-0.7	110.03	0.9	123.76	-6.0	151.02	-6.6	119.73	-3.7
	11	112.89	0.6	100.66	0.5	109.24	-0.7	123.88	0.1	143.90	-4.7	122.53	2.3
	12	116.01	2.8	103.89	3.2	111.86	2.4	131.19	5.9	168.41	17.0	123.63	0.9
Annual average		112.09		99.73		109.46		126.06		148.04		119.88	
2026:	1	116.89	0.8	114.89	10.6	106.14	-5.1	124.13	-5.4	151.27	-10.2	124.17	0.4
	2	115.88	-0.9	102.50	-10.8	111.07	4.6	132.82	7.0	146.47	-3.2	126.02	1.5

Notes:

1. The indices are rounded up to two decimal digits when published and percentage changes up to one decimal digit when published.
2. The whole time-series with seasonally adjusted indices is recalculated every time a new observation is added in the time-series.

METHODOLOGICAL NOTES

Generally	The Industrial Production Index (IPI) in Greece has been compiled by the Hellenic Statistical Authority (ELSTAT) from 1959 onwards.
Purpose of the index	The objective of the index is to compare the magnitude (volume) of the output in the current month in the mining and quarrying, manufacturing, electricity and water supply divisions with the corresponding output of a given fixed period, which is considered as base period. The Industrial Production Index shows the evolution of the value added of the production factors cost, at constant prices.
Legal framework	The compilation of the IPI, is governed by Council Regulation (EU) No 2019/2152 of the European Parliament and of the Council on European business statistics (EBS-Regulation), as well as the Commission Implementing Regulation (EU) No 2020/1197 laying down technical specifications and arrangements pursuant to Regulation (EU) No 2019/2152. Furthermore, the IPI is governed by Regulation (EC) No 1893/2006 of the European Parliament and of the Council.
Reference period	Month.
Base year	2021=100.0.
Revision	Pursuant to the provisions of Council Regulation No 2019/2152 concerning the Industrial Production Index, it is updated, every five (5) years, in years ending in 0 or 5, while, in the current revision 2021=100.0 due to the impact of the pandemic, it is revised with base year the year 2021.
Statistical classifications	At the level of branches of economic activities, the statistical classification of economic activities NACE Rev.2 of EU was used (Regulation No 1893/2006), while at the level of main industrial groupings, the allocation of two-digit and three-digit NACE Rev. 2 headings to categories of aggregate classification was used, in accordance with Council Regulation No 656/2007. At product level, the statistical classification CPA 2008 of EU was used, according to Council Regulation No 451/2008.
Geographical coverage	The index covers the whole Country.
Coverage of economic activities	The index covers all the sections of industry, the main industrial groups, as well as all levels of economic activity.
Statistical survey	The data are collected from a sample of 1,152 enterprises. The survey covers 313 products and the measurement of the surveyed products is made in terms of output quantities or in terms of production value or turnover, according to the specific features in each branch of economic activity.
Seasonal adjustment	Seasonal adjustment is the procedure followed to remove the impact of seasonality on the time-series (i.e. the impact of monthly effects, e.g. holidays, tourist period etc.), in order to improve comparability over time. The method applied is TRAMO-SEATS with the use of JDemetra+ 2.0.0. For the seasonal adjustment of the Industrial Production Index at 2-digit level of NACE Rev.2, at section level (B – Mining and Quarrying, C – Manufacturing, D – Electricity and E – Water Supply) and for the Main Industrial Groupings (MIGs), the direct approach is applied, namely each time-series is seasonally adjusted independently. For the overall Industrial Production Index, the indirect approach is applied, with the seasonally adjusted IPI being computed by aggregating the seasonally adjusted MIGs using appropriate weights.
Publication of data	The revised IPI with the new base year 2021 (2021=100.0) is released since February 2026, with December 2025 as the first reference month. Data with base year 2021=100.0 are available from January 2000 onwards.
References	More information about the methodology concerning the compilation and calculation of the index and the time series shall be available on the website of the Hellenic Statistical Authority (ELSTAT) (http://www.statistics.gr/en/statistics/-/publication/DKT21/-).