



PRESS RELEASE

TURNOVER INDEX IN INDUSTRY: October 2021, y-o-y increase of 40.6%

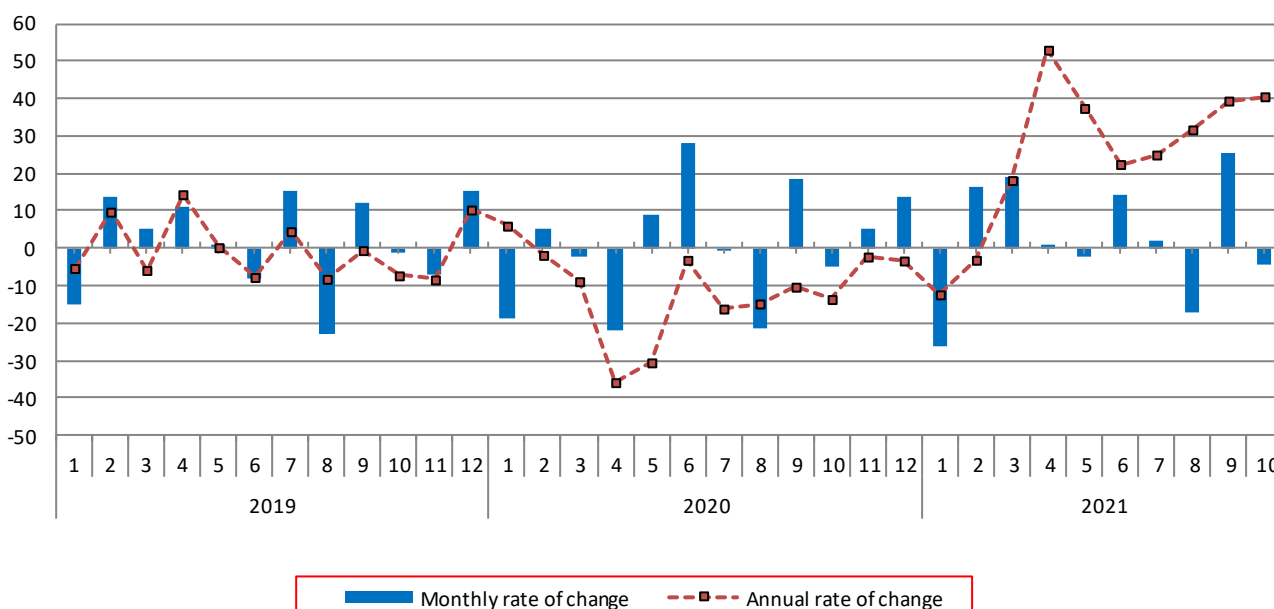
The Hellenic Statistical Authority announces the Turnover Index in Industry with base year 2015=100.0 for October 2021, the evolution of which on the basis of provisional data, is as follows:

The Overall Turnover Index in Industry (both Domestic and Non-Domestic Market) in October 2021 recorded an increase of 40.6% compared with the corresponding index of October 2020. The Overall Turnover Index in Industry in October 2020 decreased by 13.6% compared with the corresponding index in October 2019 (Table 1).

The Overall Turnover Index in Industry in October 2021, compared with September 2021, recorded a decrease of 4.3% (Table 6).

The average Overall Turnover Index in Industry for the 12-month period from November 2020 to October 2021 increased by 19.2%, compared with the corresponding index of the 12-month period from November 2019 to October 2020. The average Overall Turnover Index in Industry for the 12-month period from November 2019 to October 2020 decreased by 11.3% compared with the corresponding index of the 12-month period from November 2018 to October 2019 (Table 13).

Graph 1. Evolution of monthly (m-o-m) and annual (y-o-y) rates of change of the Overall Turnover Index in Industry (%)



Information for methodological issues:

Division of Business Statistics
Section of Manufacture-Construction Indices and Industrial Products
Head of the Section : Diamantaki Aikaterini
Tel: +30 213 135 2056
E-mail: a.diamantaki@statistics.gr

Information for data provision:

Tel: +30 213 135 2022, 2308, 2310
E-mail: data.dissem@statistics.gr

Evolution of the Overall Turnover Index in Industry in October 2021

I. Annual changes of the Overall Turnover Index in Industry: October 2021/ October 2020

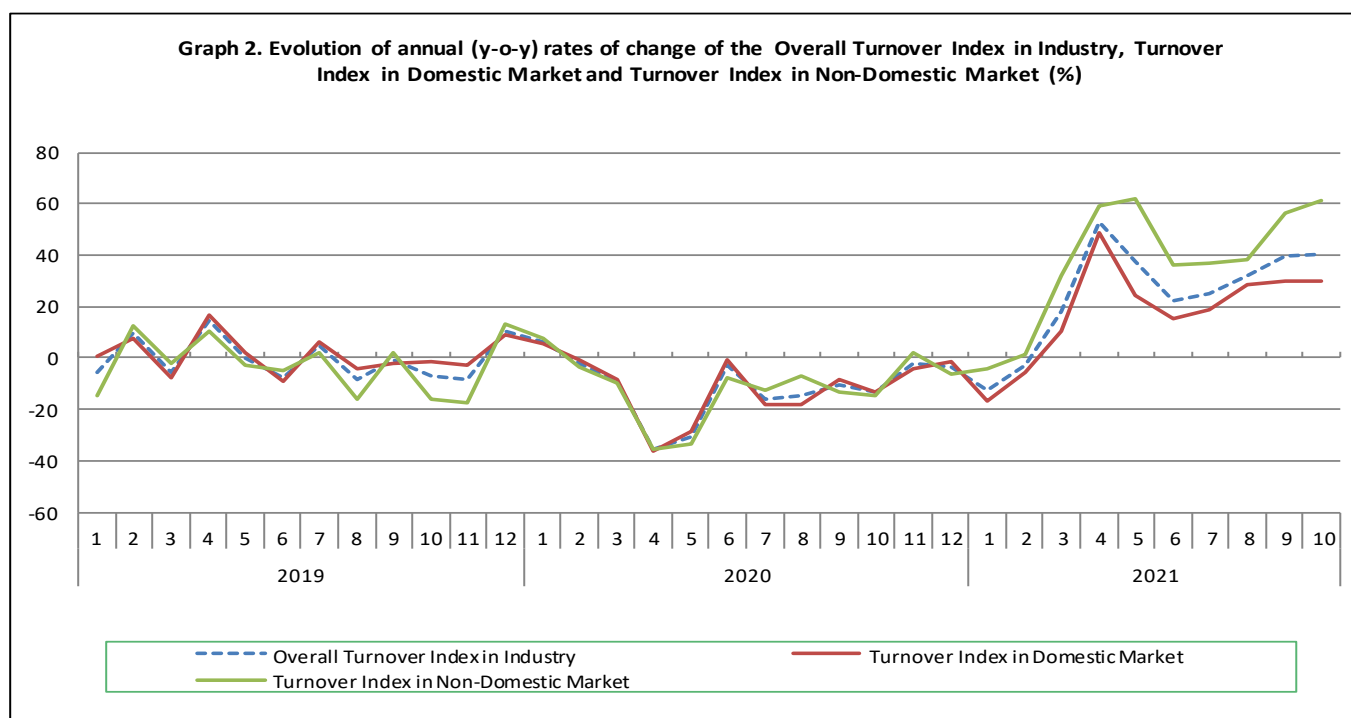
The 40.6% increase in the Overall Turnover Index in Industry in October 2021, compared with the corresponding index in October 2020, was due to the following:

1. Changes in the sub-indices of the industrial sections (Table 1):

- The Turnover Index in Manufacturing increased by 41.3%. The increase was mainly the result of the annual changes of the sub-indices in the following 2-digit divisions: coke and refined petroleum products, basic metals, electrical equipment.
- The Turnover Index in Mining and quarrying decreased by 9.5%. The decrease was the result of the annual changes of the sub-indices in the following 2-digit divisions: mining of metal ores, mining of coal and lignite - extraction of crude petroleum and natural gas - mining support service activities.

2. Changes in the sub-indices in Domestic and Non-Domestic Markets:

- The Turnover Index in Industry in Non-Domestic Market increased by 61.2% (Table 3).
- The Turnover Index in Industry in Domestic Market increased by 29.6% (Table 2).



II. Annual changes of the Turnover Index in Industry in Domestic Market: October 2021/ October 2020

The 29.6% increase of the Turnover Index in Industry in Domestic Market in October 2021, compared with October 2020, is due to the annual changes in the sub-indices of the following industrial sections (Table 2):

- The Turnover Index in Manufacturing increased by 29.9%. The increase was mainly the result of the annual changes of the sub-indices in the following 2-digit divisions: coke and refined petroleum products, basic metals, chemicals and chemical products.
- The Turnover Index in Mining and quarrying decreased by 1.2%. The decrease was the result of the annual changes of the sub-indices in the following 2-digit divisions: mining of metal ores, mining of coal and lignite - extraction of crude petroleum and natural gas - mining support service activities.

III. Annual changes of the Turnover Index in Industry in Non-Domestic Market: October 2021/ October 2020

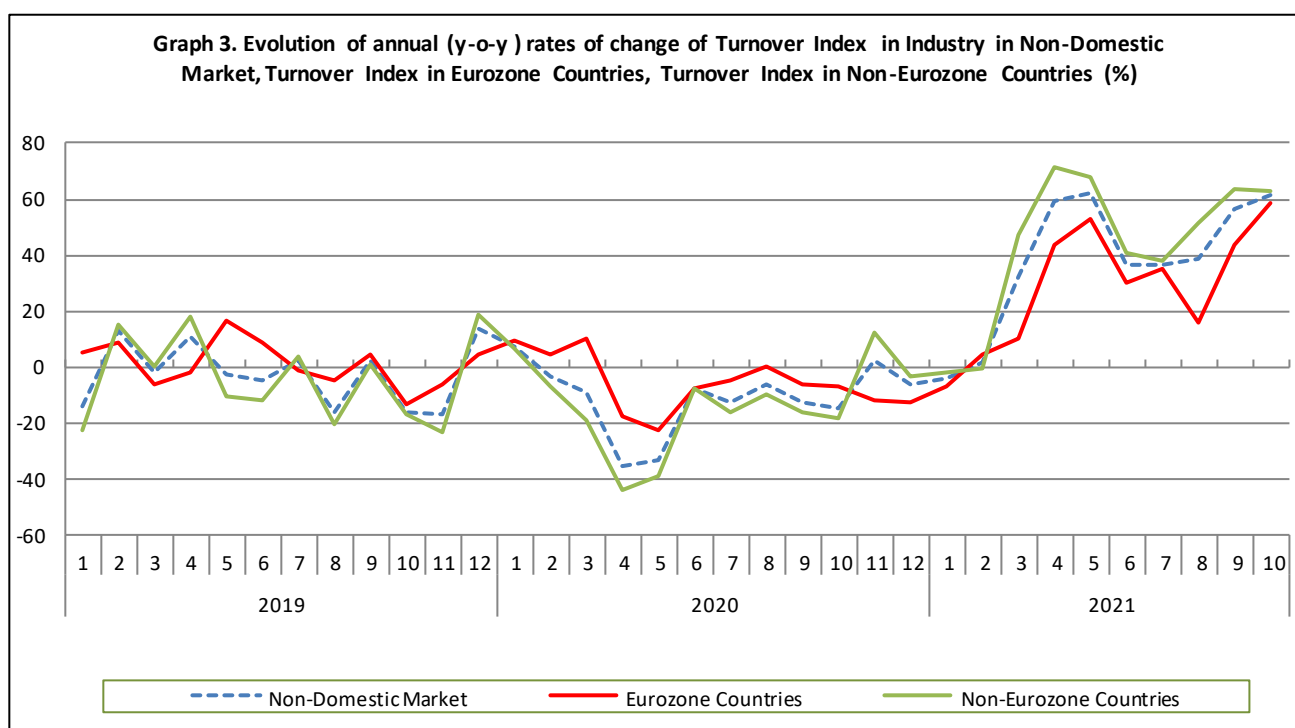
The 61.2% increase of the Turnover Index in Industry in Non-Domestic Market in October 2021, compared with October 2020, was due to the following:

1. Changes in the sub-indices of the industrial sections (Table 3):

- The Turnover Index in Manufacturing increased by 63.2%. The increase was mainly the result of the annual changes of the sub-indices in the following 2-digit divisions: coke and refined petroleum products, electrical equipment, basic metals.
- The Turnover Index in Mining and quarrying decreased by 14.9%. The decrease was mainly the result of the annual change of the sub-index in the following 2-digit division: mining of metal ores.

2. Changes in the sub-indices in Eurozone and Non-Eurozone countries:

- The Turnover Index in Industry in Non-Eurozone countries increased by 62.9% (Table 5).
- The Turnover Index in Industry in Eurozone countries increased by 58.3% (Table 4).



IV. Monthly changes of the Overall Turnover Index in Industry: October 2021/ September 2021

The 4.3% decrease of the Overall Turnover Index in Industry in October 2021, compared with the corresponding index in September 2021, was due to the following:

1. Changes in the sub-indices of industrial sections (Table 6):

- The Turnover Index in Mining and quarrying decreased by 22.1%.
- The Turnover Index in Manufacturing decreased by 4.1%.

2. Changes in the sub-indices in Domestic and Non-Domestic Market:

- The Turnover Index in Industry in Domestic Market decreased by 4.4% (Table 7).
- The Turnover Index in Industry in Non-Domestic Market decreased by 4.1% (Table 8).

Table 1. Annual rates of change of the Turnover Index in Industry: Total Market

Base year: 2015=100.0

Code		Division	Weights	October			Rate of change (%)	
				2021*	2020	2019	2021/2020	2020/2019
OVERALL INDEX				138.33	98.38	113.86	40.6	-13.6
B	MINING AND QUARRYING		100.00	97.58	107.86	109.22	-9.5	-1.3
05-06-09	Mining of coal and lignite - Extraction of crude petroleum and natural gas - Mining support service activities		21.19	13.21	14.53	112.60	-9.0	-87.1
07	Mining of metal ores		17.56	134.30	197.21	110.09	-31.9	79.1
08	Other mining and quarrying products		61.25	116.24	114.52	107.81	1.5	6.2
C	MANUFACTURING		100.00	138.88	98.25	113.93	41.3	-13.8
10	Food		23.39	117.92	108.39	107.38	8.8	0.9
11	Beverages		3.57	92.84	90.08	88.33	3.1	2.0
12	Tobacco products		1.19	137.79	132.69	152.57	3.8	-13.0
13	Textiles		1.28	125.94	107.28	112.01	17.4	-4.2
14	Wearing apparel		1.80	98.22	77.48	103.88	26.8	-25.4
15	Leather and related products		0.34	80.24	63.31	108.32	26.7	-41.5
16	Wood and products of wood and cork, except furniture		0.72	121.04	114.01	112.50	6.2	1.3
17	Paper and paper products		2.44	117.95	113.92	117.62	3.5	-3.1
18	Printing and reproduction of recorded products		1.17	106.49	90.19	104.50	18.1	-13.7
19	Coke and refined petroleum products		28.73	146.52	54.36	111.89	169.5	-51.4
20	Chemicals and chemical products		4.43	152.23	120.25	116.89	26.6	2.9
21	Basic pharmaceutical products and pharmaceutical preparations		3.67	199.76	192.82	155.77	3.6	23.8
22	Rubber and plastic products		3.47	143.28	111.88	115.23	28.1	-2.9
23	Other non-metallic mineral products		3.31	125.65	119.98	120.74	4.7	-0.6
24	Basic metals		7.19	194.02	126.86	131.10	52.9	-3.2
25	Fabricated metal products, except machinery and equipment		4.51	126.24	105.38	105.38	19.8	0.0
26	Computers, electronic and optical products		0.78	181.18	159.93	187.10	13.3	-14.5
27	Electrical equipment		2.65	190.92	142.56	123.03	33.9	15.9
28	Machinery and equipment n.e.c.		1.56	141.36	121.64	108.68	16.2	11.9
29	Motor vehicles, trailers and semi-trailers		0.23	125.31	105.24	121.41	19.1	-13.3
30	Other transport equipment		0.52	74.50	76.97	44.47	-3.2	73.1
31	Furniture		0.97	129.76	119.24	114.14	8.8	4.5
32	Other manufacturing		0.66	114.16	93.33	112.05	22.3	-16.7
33	Repair and installation of machinery and equipment		1.42	97.62	97.42	90.25	0.2	7.9
MAIN INDUSTRIAL GROUPINGS								
1	Energy		28.57	145.51	54.08	112.13	169.1	-51.8
2	Intermediate goods		28.29	153.50	120.35	117.74	27.5	2.2
3	Capital goods		7.00	124.71	111.91	110.19	11.4	1.6
4	Consumer Durables		1.86	123.31	103.79	108.67	18.8	-4.5
5	Consumer Non-Durables		34.28	123.42	114.12	113.14	8.1	0.9

* Provisional data

Note: The indices and the percentage changes are rounded up to two and one decimal digits, respectively, when published.

Table 2. Annual rates of change of the Turnover Index in Industry: Domestic Market

Base year: 2015=100.0

Code	Division	Weights	October			Rate of change (%)	
			2021*	2020	2019	2021/2020	2020/2019
OVERALL INDEX			125.52	96.83	111.34	29.6	-13.0
B	MINING AND QUARRYING	100.00	74.04	74.92	79.01	-1.2	-5.2
05-06-09	Mining of coal and lignite - Extraction of crude petroleum and natural gas - Mining support service activities	31.66	15.62	16.87	36.53	-7.4	-53.8
07	Mining of metal ores	12.83	81.95	109.11	102.78	-24.9	6.2
08	Other mining and quarrying products	55.50	105.54	100.13	97.74	5.4	2.4
C	MANUFACTURING	100.00	126.11	97.09	111.71	29.9	-13.1
10	Food	28.50	112.53	102.47	105.45	9.8	-2.8
11	Beverages	4.86	91.35	89.70	87.26	1.8	2.8
12	Tobacco products	0.51	202.54	185.30	197.99	9.3	-6.4
13	Textiles	1.11	121.32	99.19	114.70	22.3	-13.5
14	Wearing apparel	1.77	94.72	75.03	99.44	26.2	-24.5
15	Leather and related products	0.41	84.67	70.64	110.46	19.9	-36.1
16	Wood and products of wood and cork, except furniture	0.96	112.71	108.99	107.41	3.4	1.5
17	Paper and paper products	3.12	111.63	110.27	114.00	1.2	-3.3
18	Printing and reproduction of recorded products	1.63	84.96	77.52	89.75	9.6	-13.6
19	Coke and refined petroleum products	24.90	118.74	54.10	115.79	119.5	-53.3
20	Chemicals and chemical products	4.90	152.08	117.07	113.68	29.9	3.0
21	Basic pharmaceutical products and pharmaceutical preparations	3.85	170.18	167.14	129.69	1.8	28.9
22	Rubber and plastic products	3.31	135.83	107.69	112.89	26.1	-4.6
23	Other non-metallic mineral products	3.31	138.35	127.31	121.48	8.7	4.8
24	Basic metals	3.49	247.54	144.88	149.19	70.9	-2.9
25	Fabricated metal products, except machinery and equipment	4.25	145.94	120.80	114.84	20.8	5.2
26	Computers, electronic and optical products	0.40	108.00	105.97	130.93	1.9	-19.1
27	Electrical equipment	2.24	171.23	141.83	121.47	20.7	16.8
28	Machinery and equipment n.e.c.	1.46	154.12	132.55	113.58	16.3	16.7
29	Motor vehicles, trailers and semi-trailers	0.27	132.42	99.45	126.00	33.2	-21.1
30	Other transport equipment	0.58	50.63	64.98	33.43	-22.1	94.4
31	Furniture	1.35	118.74	112.50	105.94	5.6	6.2
32	Other manufacturing	0.88	112.22	89.44	106.78	25.5	-16.2
33	Repair and installation of machinery and equipment	1.92	102.54	103.34	93.31	-0.8	10.8
MAIN INDUSTRIAL GROUPINGS							
1	Energy	24.89	117.68	53.76	115.07	118.9	-53.3
2	Intermediate goods	25.73	150.33	119.07	115.76	26.3	2.9
3	Capital goods	7.19	133.16	118.30	109.88	12.6	7.7
4	Consumer Durables	2.31	107.49	95.51	100.19	12.5	-4.7
5	Consumer Non-Durables	39.88	114.06	105.58	107.06	8.0	-1.4

* Provisional data

Note: The indices and the percentage changes are rounded up to two and one decimal digits, respectively, when published.

Table 3. Annual rates of change of the Turnover Index in Industry: Non-Domestic Market

Base year: 2015=100.0

Code	Division	Weights	October			Rate of change (%)	
			2021*	2020	2019	2021/2020	2020/2019
OVERALL INDEX			163.56	101.44	118.84	61.2	-14.6
B	MINING AND QUARRYING	100.00	128.30	150.83	148.66	-14.9	1.5
05-06-09	Mining of coal and lignite - Extraction of crude petroleum and natural gas - Mining support service activities	7.53	0.00	1.67	530.17	-100.0	-99.7
07	Mining of metal ores	23.74	171.25	259.38	115.25	-34.0	125.1
08	Other mining and quarrying products	68.74	127.52	129.69	118.42	-1.7	9.5
C	MANUFACTURING	100.00	164.18	100.57	118.32	63.2	-15.0
10	Food	13.27	140.85	133.61	115.61	5.4	15.6
11	Beverages	1.01	107.05	93.71	98.53	14.2	-4.9
12	Tobacco products	2.53	111.68	111.48	134.25	0.2	-17.0
13	Textiles	1.61	132.28	118.40	108.32	11.7	9.3
14	Wearing apparel	1.86	104.82	82.09	112.26	27.7	-26.9
15	Leather and related products	0.19	61.21	31.85	99.13	92.2	-67.9
16	Wood and products of wood and cork, except furniture	0.24	187.16	153.86	152.85	21.6	0.7
17	Paper and paper products	1.11	153.08	134.22	137.74	14.1	-2.6
18	Printing and reproduction of recorded products	0.26	374.63	247.91	288.29	51.1	-14.0
19	Coke and refined petroleum products	36.32	184.26	54.71	106.59	236.8	-48.7
20	Chemicals and chemical products	3.50	152.64	129.06	125.78	18.3	2.6
21	Basic pharmaceutical products and pharmaceutical preparations	3.30	268.10	252.16	216.02	6.3	16.7
22	Rubber and plastic products	3.79	156.20	119.16	119.29	31.1	-0.1
23	Other non-metallic mineral products	3.31	100.46	105.46	119.25	-4.7	-11.6
24	Basic metals	14.54	168.57	118.30	122.50	42.5	-3.4
25	Fabricated metal products, except machinery and equipment	5.03	93.23	79.55	89.52	17.2	-11.1
26	Computers, electronic and optical products	1.52	219.27	188.01	216.33	16.6	-13.1
27	Electrical equipment	3.44	216.36	143.49	125.04	50.8	14.8
28	Machinery and equipment n.e.c.	1.76	120.41	103.72	100.65	16.1	3.1
29	Motor vehicles, trailers and semi-trailers	0.14	97.60	127.81	103.52	-23.6	23.5
30	Other transport equipment	0.40	142.52	111.12	75.96	28.3	46.3
31	Furniture	0.21	270.07	205.06	218.65	31.7	-6.2
32	Other manufacturing	0.22	129.15	123.48	152.88	4.6	-19.2
33	Repair and installation of machinery and equipment	0.43	54.41	45.39	63.36	19.9	-28.4
MAIN INDUSTRIAL GROUPINGS							
1	Energy	35.82	183.59	54.52	108.12	236.7	-49.6
2	Intermediate goods	33.33	158.31	122.30	120.75	29.4	1.3
3	Capital goods	6.62	106.63	98.24	110.86	8.5	-11.4
4	Consumer Durables	0.98	196.94	142.33	148.14	38.4	-3.9
5	Consumer Non-Durables	23.25	155.02	143.00	133.67	8.4	7.0

* Provisional data

Note: The indices and the percentage changes are rounded up to two and one decimal digits, respectively, when published.

Table 4. Annual rates of change of the Turnover Index in Industry: Eurozone Countries

Base year: 2015=100.0

Code		Sections and main groupings	October			Rate of change (%)	
			2021*	2020	2019	2021/2020	2020/2019
OVERALL INDEX			168.35	106.35	114.26	58.3	-6.9
INDUSTRIAL SECTIONS							
B	MINING AND QUARRYING		148.05	94.42	230.85	56.8	-59.1
C	MANUFACTURING		168.76	106.59	111.93	58.3	-4.8
MAIN INDUSTRIAL GROUPINGS							
1	Energy		180.25	26.52	59.39	579.7	-55.3
2	Intermediate goods		170.77	127.14	135.18	34.3	-5.9
3	Capital goods		129.99	114.71	119.26	13.3	-3.8
4	Consumer Durables		325.09	193.21	260.52	68.3	-25.8
5	Consumer Non-Durables		157.41	134.04	122.79	17.4	9.2

* Provisional data

Table 5. Annual rates of change of the Turnover Index in Industry: Non-Eurozone Countries

Base year: 2015=100.0

CodeSections and main groupings		October			Rate of change (%)	
		2021*	2020	2019	2021/2020	2020/2019
OVERALL INDEX		161.01	98.82	121.27	62.9	-18.5
INDUSTRIAL SECTIONS						
B	MINING AND QUARRYING	115.33	187.87	94.71	-38.6	98.4
C	MANUFACTURING	161.75	97.38	121.70	66.1	-20.0
MAIN INDUSTRIAL GROUPINGS						
1	Energy	184.56	62.59	122.15	194.9	-48.8
2	Intermediate goods	150.19	119.14	111.35	26.1	7.0
3	Capital goods	98.71	92.66	108.01	6.5	-14.2
4	Consumer Durables	108.44	107.20	70.53	1.2	52.0
5	Consumer Non-Durables	152.68	151.72	144.26	0.6	5.2

* Provisional data

Note: The indices and the percentage changes are rounded up to two and one decimal digits, respectively, when published.

Table 6. Monthly rate of change of the Turnover Index in Industry: Total Market

Base year: 2015=100.0

Code	Sections and main groupings	October 2021*	September 2021**	Rate of change (%) Oct. 2021/ Sep. 2021
OVERALL INDEX		138.33	144.50	-4.3
INDUSTRIAL SECTIONS				
B	MINING AND QUARRYING	97.58	125.32	-22.1
C	MANUFACTURING	138.88	144.76	-4.1
MAIN INDUSTRIAL GROUPINGS				
1	Energy	145.51	149.28	-2.5
2	Intermediate goods	153.50	162.75	-5.7
3	Capital goods	124.71	125.65	-0.8
4	Consumer Durables	123.31	133.33	-7.5
5	Consumer Non-Durables	123.42	129.90	-5.0

Table 7. Monthly rate of change of the Turnover Index in Industry: Domestic Market

Base year: 2015=100.0

Code	Sections and main groupings	October 2021*	September 2021**	Rate of change (%) Oct. 2021/ Sep. 2021
OVERALL INDEX		125.52	131.31	-4.4
INDUSTRIAL SECTIONS				
B	MINING AND QUARRYING	74.04	79.90	-7.3
C	MANUFACTURING	126.11	131.91	-4.4
MAIN INDUSTRIAL GROUPINGS				
1	Energy	117.68	116.84	0.7
2	Intermediate goods	150.33	159.58	-5.8
3	Capital goods	133.16	129.23	3.0
4	Consumer Durables	107.49	131.87	-18.5
5	Consumer Non-Durables	114.06	122.46	-6.9

Table 8. Monthly rate of change of the Turnover Index in Industry: Non-Domestic Market

Base year: 2015=100.0

Code	Sections and main groupings	October 2021*	September 2021**	Rate of change (%) Oct. 2021/ Sep. 2021
OVERALL INDEX		163.56	170.47	-4.1
INDUSTRIAL SECTIONS				
B	MINING AND QUARRYING	128.30	184.60	-30.5
C	MANUFACTURING	164.18	170.22	-3.6
MAIN INDUSTRIAL GROUPINGS				
1	Energy	183.59	193.68	-5.2
2	Intermediate goods	158.31	167.58	-5.5
3	Capital goods	106.63	118.01	-9.6
4	Consumer Durables	196.94	140.15	40.5
5	Consumer Non-Durables	155.02	155.07	0.0

* Provisional data ** Revised data

Note: The indices and the percentage changes are rounded up to two and one decimal digits, respectively, when published.

Table 9. Monthly rate of change of the Turnover Index in Industry: Eurozone Countries

Base year: 2015=100.0

Code	Sections and main groupings	October 2021*	September 2021**	Rate of change (%) Oct. 2021/ Sep. 2021
OVERALL INDEX		168.35	161.95	4.0
INDUSTRIAL SECTIONS				
B	MINING AND QUARRYING	148.05	208.16	-28.9
C	MANUFACTURING	168.76	161.02	4.8
MAIN INDUSTRIAL GROUPINGS				
1	Energy	180.25	156.48	15.2
2	Intermediate goods	170.77	172.04	-0.7
3	Capital goods	129.99	143.39	-9.3
4	Consumer Durables	325.09	196.40	65.5
5	Consumer Non-Durables	157.41	155.70	1.1

* Provisional data ** Revised data

Table 10. Monthly rate of change of the Turnover Index in Industry: Non-Eurozone Countries

Base year: 2015=100.0

Code	Sections and main groupings	October 2021*	September 2021**	Rate of change (%) Oct. 2021/ Sep. 2021
OVERALL INDEX		161.01	175.00	-8.0
INDUSTRIAL SECTIONS				
B	MINING AND QUARRYING	115.33	169.13	-31.8
C	MANUFACTURING	161.75	175.09	-7.6
MAIN INDUSTRIAL GROUPINGS				
1	Energy	184.56	204.39	-9.7
2	Intermediate goods	150.19	164.68	-8.8
3	Capital goods	98.71	109.41	-9.8
4	Consumer Durables	108.44	101.31	7.0
5	Consumer Non-Durables	152.68	154.45	-1.1

* Provisional data ** Revised data

Note: The indices and the percentage changes are rounded up to two and one decimal digits, respectively, when published.

Table 11. Evolution of the Turnover Index in Industry (y-o-y changes): Total Market

Base year: 2015=100.0

Year and month		Overall Index (Total Market)		Turnover Index in Industry in Domestic Market		Turnover Index in Industry in Non-Domestic Market	
		Index	Annual rate of change (%)	Index	Annual rate of change (%)	Index	Annual rate of change (%)
2020:	10	98.38	-13.6	96.83	-13.0	101.44	-14.6
	11	103.58	-2.2	99.60	-4.5	111.43	2.1
	12	117.97	-3.3	115.81	-1.6	122.23	-6.3
2021*:	1	87.10	-12.3	80.73	-16.8	99.63	-4.2
	2	101.29	-3.1	92.98	-5.6	117.67	1.1
	3	120.85	18.2	107.10	10.2	147.93	31.9
	4	122.10	53.0	111.47	49.1	143.05	59.5
	5	119.68	37.5	106.06	24.4	146.50	61.8
	6	136.54	22.5	127.84	15.4	153.68	36.3
	7	138.93	25.0	128.31	18.6	159.85	36.8
	8	115.37	31.7	111.23	28.2	123.52	38.4
	9	144.50	39.5	131.31	30.1	170.47	56.6
	10	138.33	40.6	125.52	29.6	163.56	61.2

*Provisional data

Table 12. Evolution of the Turnover Index in Industry (y-o-y changes): Non-Domestic Market

Base year: 2015=100.0

Year and month		Overall Index (Non-Domestic Market)		Turnover Index in Industry in Eurozone Countries		Turnover Index in Industry in Non-Eurozone Countries	
		Index	Annual rate of change (%)	Index	Annual rate of change (%)	Index	Annual rate of change (%)
2020:	10	101.44	-14.6	106.35	-6.9	98.82	-18.5
	11	111.43	2.1	113.15	-12.2	110.51	12.0
	12	122.23	-6.3	108.01	-12.5	129.79	-3.3
2021*:	1	99.63	-4.2	108.48	-7.2	94.93	-2.3
	2	117.67	1.1	129.29	4.4	111.49	-0.8
	3	147.93	31.9	147.07	10.2	148.39	47.2
	4	143.05	59.5	155.79	43.4	136.28	71.1
	5	146.50	61.8	161.93	52.6	138.30	68.1
	6	153.68	36.3	165.15	29.8	147.58	40.5
	7	159.85	36.8	164.28	35.3	157.49	37.7
	8	123.52	38.4	105.98	15.6	132.85	51.1
	9	170.47	56.6	161.95	43.6	175.00	63.8
	10	163.56	61.2	168.35	58.3	161.01	62.9

*Provisional data

Note: The indices and the percentage changes are rounded up to two and one decimal digits, respectively, when published.

Table 13. Average indices and rates of change (%) of the 12-month periods of Turnover Index in Industry: Total Market
Base year: 2015=100.0

CodeDivision		Average Indices of 12-month periods			Rate of change (%)	
		Nov. 2020- Oct. 2021*	Nov. 2019- Oct. 2020	Nov. 2018- Oct. 2019	2021/2020	2020/2019
OVERALL INDEX		120.52	101.08	113.97	19.2	-11.3
B	MINING AND QUARRYING	102.80	100.04	106.18	2.8	-5.8
05-06-09	Mining of coal and lignite - Extraction of crude petroleum and natural gas - Mining support service activities	34.04	30.48	88.79	11.7	-65.7
07	Mining of metal ores	164.84	190.41	146.86	-13.4	29.7
08	Other mining and quarrying products	108.80	98.19	100.53	10.8	-2.3
C	MANUFACTURING	120.76	101.10	114.07	19.4	-11.4
10	Food	110.60	102.85	103.40	7.5	-0.5
11	Beverages	113.42	99.31	116.23	14.2	-14.6
12	Tobacco products	144.35	132.17	128.06	9.2	3.2
13	Textiles	114.44	97.67	107.16	17.2	-8.9
14	Wearing apparel	75.47	72.49	94.60	4.1	-23.4
15	Leather and related products	63.28	62.98	87.73	0.5	-28.2
16	Wood and products of wood and cork, except furniture	112.01	102.40	106.51	9.4	-3.9
17	Paper and paper products	115.11	113.27	113.96	1.6	-0.6
18	Printing and reproduction of recorded products	94.66	89.65	96.81	5.6	-7.4
19	Coke and refined petroleum products	111.08	82.10	120.39	35.3	-31.8
20	Chemicals and chemical products	133.97	118.66	116.60	12.9	1.8
21	Basic pharmaceutical products and pharmaceutical preparations	183.46	160.11	140.21	14.6	14.2
22	Rubber and plastic products	127.00	108.63	106.32	16.9	2.2
23	Other non-metallic mineral products	118.55	101.81	111.14	16.4	-8.4
24	Basic metals	153.73	116.84	130.71	31.6	-10.6
25	Fabricated metal products, except machinery and equipment	117.45	96.58	101.60	21.6	-4.9
26	Computers, electronic and optical products	183.94	163.46	150.31	12.5	8.8
27	Electrical equipment	182.70	130.68	126.10	39.8	3.6
28	Machinery and equipment n.e.c.	121.10	105.58	107.27	14.7	-1.6
29	Motor vehicles, trailers and semi-trailers	117.30	110.07	108.43	6.6	1.5
30	Other transport equipment	73.02	63.90	67.40	14.3	-5.2
31	Furniture	116.87	106.36	114.36	9.9	-7.0
32	Other manufacturing	105.75	90.38	103.66	17.0	-12.8
33	Repair and installation of machinery and equipment	102.50	98.05	94.03	4.5	4.3
MAIN INDUSTRIAL GROUPINGS						
1	Energy	110.54	81.76	120.21	35.2	-32.0
2	Intermediate goods	134.62	111.16	115.68	21.1	-3.9
3	Capital goods	118.93	103.40	103.91	15.0	-0.5
4	Consumer Durables	113.02	100.61	106.03	12.3	-5.1
5	Consumer Non-Durables	117.93	108.42	109.84	8.8	-1.3

*Provisional data

Note: The indices and the percentage changes are rounded up to two and one decimal digits, respectively, when published.

METHODOLOGICAL NOTES

Generally	The Industrial Turnover Index is an indicator of an enterprise's business cycle showing the monthly evolution of the market of goods and services in industry. The first compilation of the Turnover Index was completed by the Hellenic Statistical Authority in 2006, with base year 2000=100.0 and is compiled from 2000 onwards.
Purpose of the index	The purpose of this index is to measure the monthly activity of the industrial sector in terms of value. Turnover comprises the totals invoiced by the observation units during the reference period and corresponds to the market sales of goods or services supplied to third parties. The purposes and the characteristics of the Turnover Index apply, as well, to the indices for the distinction between domestic and non-domestic turnover.
Legal Framework	The compilation and publication of the Turnover Index is based on the framework of the implementation of Council Regulation (EC) No 1165/1998 concerning short-term statistics (STS-R), as well as Regulation (EC) No 1158/2005 of the European Parliament and of the Council amending Council Regulation (EC) No 1165/1998. Furthermore, this index is governed by Regulation (EC) No 1893/2006 of the European Parliament and of the Council, by Commission Regulation (EC) No 656/2007, by Regulation (EC) No 451/2008 of the Council, by Regulation (EU) No 2019/2152 of the European Parliament and of the Council on European business statistics, as well as Commission Implementing Regulation (EU) No 2020/1197 laying down technical specifications and arrangements pursuant to Regulation (EU) No 2019/2152.
Reference period	Month.
Base year	2015=100.0.
Revision	The latest revision of the Turnover Index in Industry (base year 2015=100.0) took place in the framework of Council Regulation (EC) No 1165/1998 concerning short-term statistics. In accordance with this regulation the index is revised every five years, in years ending in 0 or 5.
Statistical classifications	At the level of classes of economic activities, the statistical classification of economic activities NACE Rev. 2 of EU was used (Regulation No 1893/2006), while at the level of main industrial groupings, the allocation of two-digit and three-digit NACE Rev. 2 headings to categories of aggregate classification was used, in accordance with Commission Regulation No 656/2007.
Geographical coverage	The index covers the whole Country.
Coverage of economic activities	The Turnover Index in Industry is compiled for all activities listed in Sections B (mining and quarrying) and C (manufacturing) of the NACE Rev. 2 statistical classification.
Computation of the Index	The Turnover Index in Industry is a fixed base index. This index is calculated at a first stage at the four-digit level of economic activity and subsequently, with the implementation of appropriate weighting coefficients, the index is calculated at higher levels (three-level and two-level of economic activity) as well as at the level of Main Industrial Groupings (MIGs).
Data collection and processing in the context of the COVID-19 pandemic	The compilation of the indices was mainly based on data collected by the enterprises (via web-based application, email), as well as data from administrative sources. For October 2021 there was no significant change in the data collection compared to previous reference months.
Publication of data	The Turnover Index in Industry (2015=100.0) is released since August 2019 with June 2019 as first reference month. Data with base year 2015=100.0 are available from January 2000 onwards.
References	More information about the methodology concerning the compilation and calculation of the index and for the time series is available on the website of the Hellenic Statistical Authority (ELSTAT) (http://www.statistics.gr/en/statistics/-/publication/DKT24/).