



## CONSUMER PRICE INDEX: August, annual inflation 3.0%

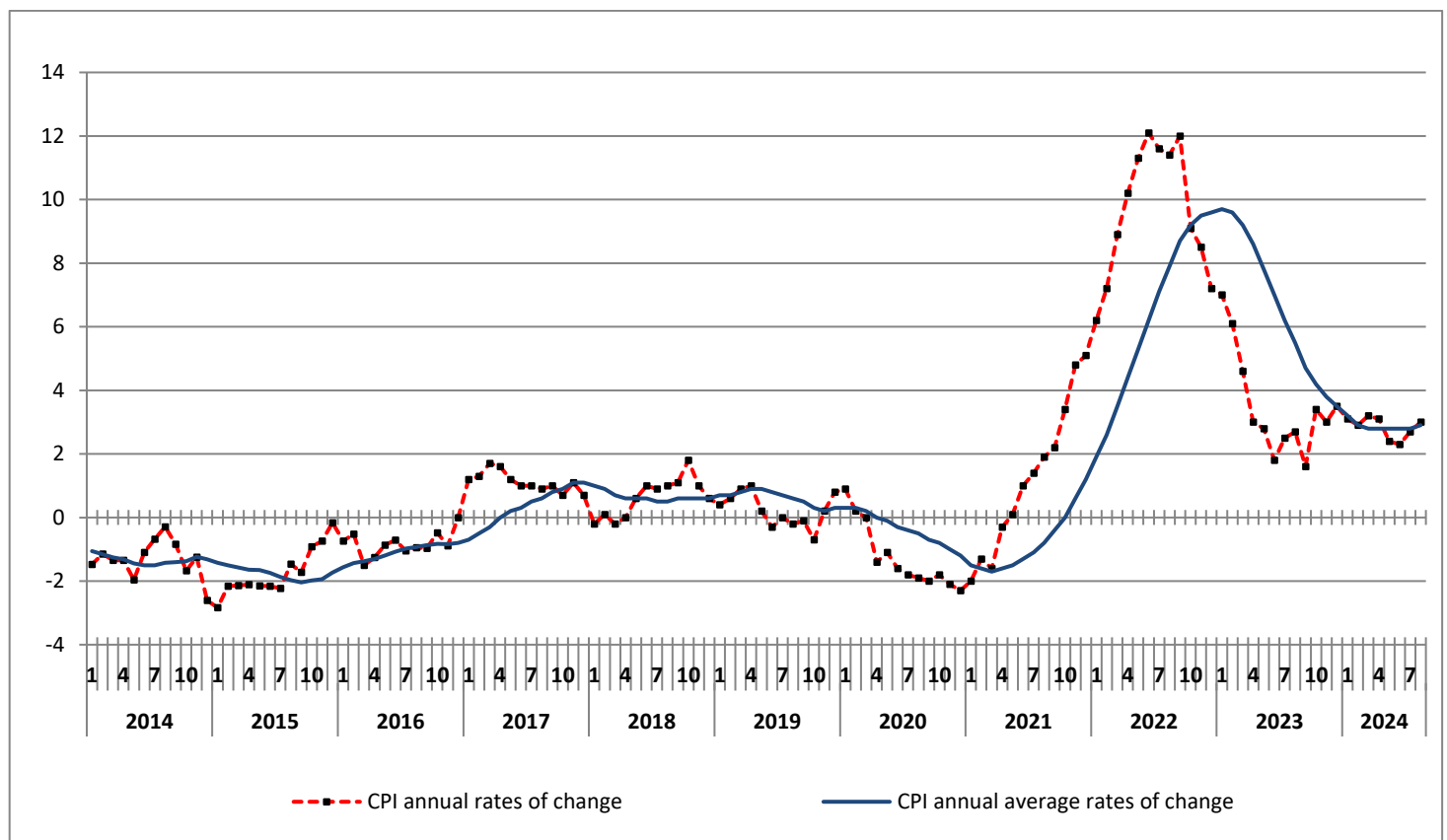
The evolution of the Consumer Price Index (CPI) of August 2024 (reference year 2020=100.0) is depicted as follows:

The CPI in August 2024 compared with August 2023, increased by 3.0%. In August 2023, the annual rate of change of the CPI was 2.7% (Table 2).

The CPI in August 2024 compared with July 2024, increased by 0.3%. In August 2023, the CPI compared with July 2023 remained unchanged.

The average CPI for the twelve - month period from September 2023 to August 2024, compared with the corresponding index for the period September 2022 to August 2023 increased by 2.9%. The annual rate of change of the average CPI between the twelve - month period September 2022 to August 2023 in comparison to the period September 2021 to August 2022 was 5.5% (Table 3).

**Graph 1. Annual and annual average rates of change (%) of CPI**



Information on methodological issues:  
Population, Employment and  
Cost of Living Statistics Division  
Section of Retail Price Indices  
Acting Head of Section: A. Kourtaki  
Tel: +30 213 135 2128  
email: [a.kourtaki@statistics.gr](mailto:a.kourtaki@statistics.gr)

Information for data provision:  
Tel: +30 213 135 2022, 2308, 2310  
email: [data.dissem@statistics.gr](mailto:data.dissem@statistics.gr)

## Analysis of changes of the CPI: August 2024

### I. Monthly rates of change: August 2024 compared with July 2024 (Tables 1, 4)

The 0.3% increase of the Overall CPI in August 2024, compared with the corresponding index in July 2024 is, mainly, due to the changes in the groups of goods and services as follows:

#### 1. An increase of:

- 0.2% in the group Food and non-alcoholic beverages, due to the increase, mainly, in the prices of: *fresh fish, cheese, fresh fruit, fresh vegetables*. This increase was partly offset by the decrease, mainly, in the prices of: *bread and cereals, poultry, yoghurt, olive oil*.
- 2.8% in the group Housing, due to the increase, mainly, in the prices of: *rentals for dwellings, repair and maintenance of the dwelling, electricity*.
- 1.4% in the group Health, due to the increase, mainly, in the prices of *pharmaceutical products*.
- 0.3% in the group Communication, due to the increase, mainly, in the prices of *telephone services*.
- 0.1% in the group Hotel-Cafés-Restaurants, due to the increase, mainly, in the prices of: *restaurants-confectioneries-cafes-buffets*. This increase was partly offset by the decrease, mainly, in the prices of *hotels-motels-inns*.
- 1.1% in the group Miscellaneous goods and services, due to the increase, mainly, in the prices of *other appliances and articles for personal care*.

#### 2. A decrease of:

- 0.3% in the group Alcoholic beverages and tobacco, due to the decrease, mainly, in the prices of *alcoholic beverages (not served)*.
- 4.6% in the group Clothing and footwear, due to the period of summer sales.
- 0.3% in the group Household equipment, due to the decrease, mainly, in the prices of *non-durable household articles*.
- 0.8% in the group Transport, due to the decrease, mainly, in the prices of *fuels and lubricants*.

## II. Annual rates of change: August 2024 compared with August 2023 (Tables 2, 5)

The 3.0% increase of the Overall CPI in August 2024, compared with the corresponding index in August 2023 is, mainly, due to the changes in the groups of goods and services as follows:

### 1. An increase of:

- 2.8% in the group Food and non-alcoholic beverages, due to the increase, mainly, in the prices of: *bread, breakfast cereals, meat, fresh fish, olive oil, dried fruit and nuts, fresh vegetables, preserved or processed vegetables, sugar-chocolates-sweets-ice creams, mineral water-refreshments-fruit juices*. This increase was partly offset by the decrease, mainly, in the prices of: *pizza and quiche, milk-cheese and eggs, fresh fruit, frozen vegetables, potatoes, food n.e.c.*
- 0.7% in the group Alcoholic beverages and tobacco, due to the increase, mainly, in the prices of *alcoholic beverages (not served)*.
- 6.2% in the group Clothing and footwear, due to the increase in the prices of clothing and footwear.
- 5.5% in the group Housing, due to the increase, mainly, in the prices of: *rentals for dwellings, services for the repair and maintenance of the dwelling, electricity, natural gas, heating oil*. This increase was partly offset by the decrease, mainly, in the prices of: *municipal charges for refuse collection*.
- 3.1% in the group Health, due to the increase, mainly, in the prices of: *pharmaceutical products, medical-dental and paramedical services, hospital care*. This increase was partly offset by the decrease, mainly, in the prices of *medical products*.
- 1.5% in the group Transport, due to the increase, mainly, in the prices of: *new motorcars, spare parts and accessories for motorcars, maintenance and repair of motorcars-motorcycles, other services for motorcars – motorcycles, tickets for passenger transport by air*. This increase was partly offset by the decrease, mainly, in the prices of: *second hand motor cars, fuels and lubricants*.
- 0.4% in the group Communication, due to the increase, mainly, in the prices of *telephone services*.
- 1.4% in the group Recreation and culture, due to the increase, mainly, in the prices of: *small recreational items-flowers-pets, recreational services, newspapers-books and stationary, package holidays*. This increase was partly offset by the decrease, mainly, in the prices of *equipment for the reception, equipment for the reception recording and reproduction of sound and picture*.
- 3.5% in the group Education, due to the increase, mainly, in the prices of: *fees of pre-primary and primary education, fees of secondary education, fees of tertiary education*.
- 6.6% in the group Hotel-Cafés-Restaurants, due to the increase, mainly, in the prices of: *restaurants-confectioneries-cafes-buffets, hotels-motels-inns*.
- 1.9% in the group Miscellaneous goods and services, due to the increase, mainly, in the prices of: *hairdressing salons and personal grooming establishments, other personal effects, private insurance connected with health, motor vehicle insurance*. This increase was partly offset by the decrease, mainly, in the prices of *other appliances and articles for personal care*.

### 2. A decrease of:

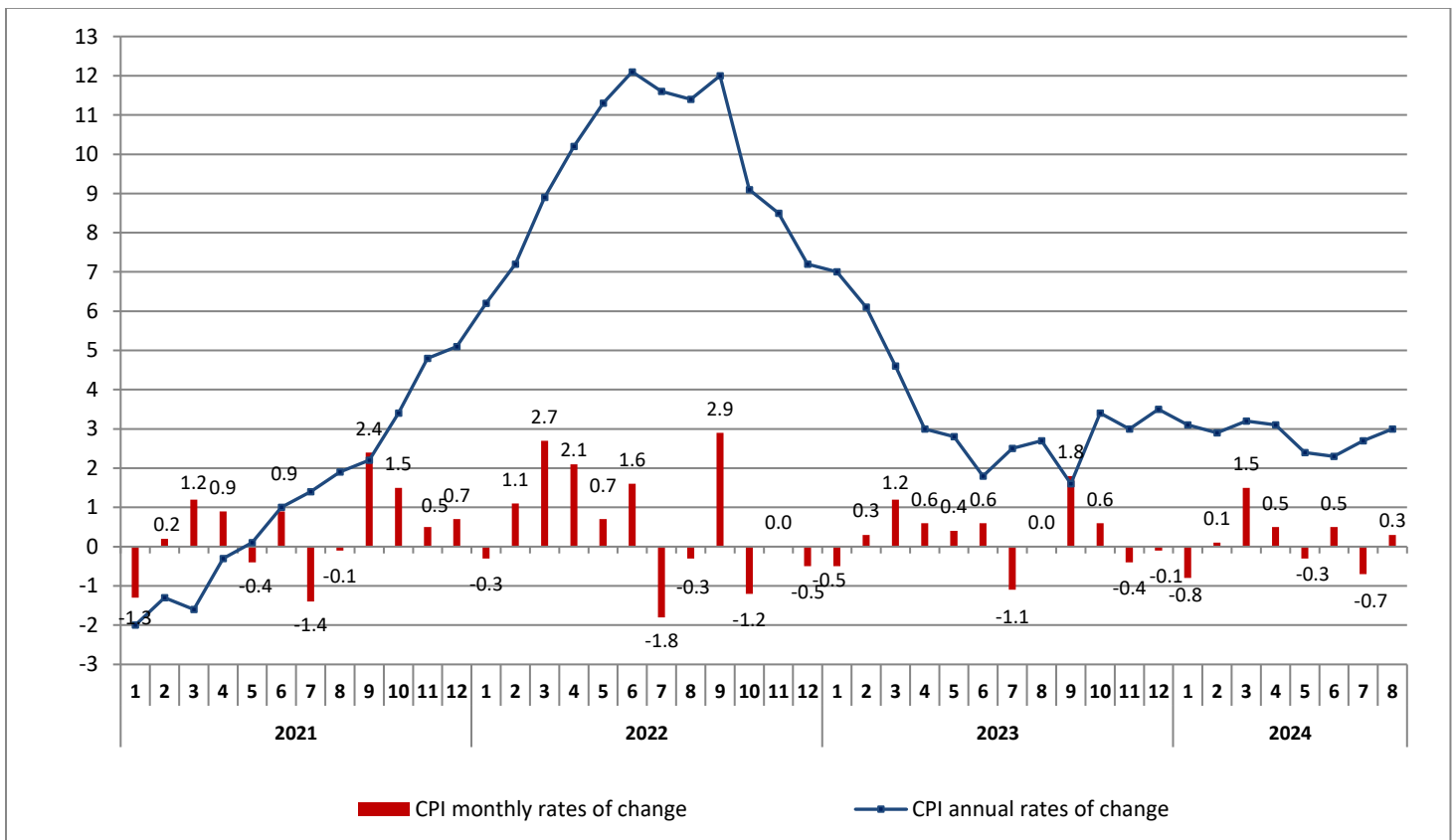
- 0.9% in the group Household equipment, due to the decrease, mainly, in the prices of *non-durable household articles*. This decrease was partly offset by the increase, mainly, in the prices of: *furniture and furnishing, domestic services*.

**Table 1. Monthly rates of change of CPI**  
(Reference year: 2020=100.0)

Main groups of goods and services	Weights 2024 (‰)	2024	2024	Rate of change %	2023	2023	Rate of change %
		August	July		August	July	
1. Food & non-alcoholic beverages	219.79	131.09	130.78	0.2	127.52	127.76	-0.2
2. Alcoholic beverages and tobacco	38.06	105.68	105.99	-0.3	104.94	105.12	-0.2
3. Clothing and footwear	55.22	92.29	96.78	-4.6	86.93	92.76	-6.3
4. Housing	123.21	124.35	120.91	2.8	117.90	118.06	-0.1
5. Household equipment	45.50	112.73	113.11	-0.3	113.77	113.36	0.4
6. Health	77.83	111.24	109.71	1.4	107.85	107.62	0.2
7. Transport	134.57	125.33	126.35	-0.8	123.53	122.08	1.2
8. Communication	42.81	92.84	92.60	0.3	92.50	92.91	-0.4
9. Recreation and culture	41.74	106.18	106.34	-0.1	104.69	104.58	0.1
10. Education	43.71	106.73	106.73	0.0	103.12	103.12	0.0
11. Hotels-Cafés-Restaurants	107.38	120.66	120.58	0.1	113.18	112.98	0.2
12. Miscellaneous goods and services	70.19	107.78	106.64	1.1	105.71	104.55	1.1
<b>Overall Index</b>	<b>1000.00</b>	<b>117.68</b>	<b>117.38</b>	<b>0.3</b>	<b>114.26</b>	<b>114.30</b>	<b>0.0</b>

Note: The indices are rounded up to two decimal figures when published and percentage changes up to one decimal figure when published.

**Graph 2. Annual and monthly rates of change (%) of CPI**



**Table 2. Inflation – Annual rates of change of CPI****(Reference year: 2020=100.0)****I: August 2024/2023**

	Main groups of goods and services	August		Rate of change (%)	Impact
		2024	2023		
1.	Food and non-alcoholic beverages	131.09	127.52	2.8	0.6302
2.	Alcoholic beverages and tobacco	105.68	104.94	0.7	0.0311
3.	Clothing and footwear	92.29	86.93	6.2	0.1377
4.	Housing	124.35	117.90	5.5	0.6906
5.	Household equipment	112.73	113.77	-0.9	-0.0409
6.	Health	111.24	107.85	3.1	0.2490
7.	Transport	125.33	123.53	1.5	0.2176
8.	Communication	92.84	92.50	0.4	0.0189
9.	Recreation and culture	106.18	104.69	1.4	0.0585
10.	Education	106.73	103.12	3.5	0.1261
11.	Hotels-Cafés-Restaurants	120.66	113.18	6.6	0.7270
12.	Miscellaneous goods and services	107.78	105.71	1.9	0.1417
<b>Overall Index</b>		<b>117.68</b>	<b>114.26</b>	<b>3.0</b>	

**II: August 2023/2022**

	Main groups of goods and services	August		Rate of change (%)	Impact
		2023	2022		
1.	Food and non-alcoholic beverages	127.52	115.15	10.7	2.3015
2.	Alcoholic beverages and tobacco	104.94	101.70	3.2	0.1147
3.	Clothing and footwear	86.93	81.33	6.9	0.5671
4.	Housing	117.90	134.84	-12.6	-2.1377
5.	Household equipment	113.77	107.78	5.6	0.2513
6.	Health	107.85	101.82	5.9	0.4397
7.	Transport	123.53	121.63	1.6	0.2138
8.	Communication	92.50	95.45	-3.1	-0.1288
9.	Recreation and culture	104.69	101.32	3.3	0.1194
10.	Education	103.12	100.93	2.2	0.0628
11.	Hotels-Cafés-Restaurants	113.18	106.69	6.1	0.6732
12.	Miscellaneous goods and services	105.71	101.71	3.9	0.2669
<b>Overall Index</b>		<b>114.26</b>	<b>111.21</b>	<b>2.7</b>	

Note: The indices are rounded up to two decimal figures when published and percentage changes up to one decimal figure when published.

**Table 3. Comparisons of the overall CPI**  
(Reference year: 2020=100.0)

Year and month	Overall Index	Monthly rates of change %	Annual rates of change Inflation %	Annual average index (moving average)	Annual average rates of change %
<b>2021 : 1</b>	98.52	-1.3	-2.0	99.84	-1.5
2	98.72	0.2	-1.3	99.73	-1.6
3	99.91	1.2	-1.6	99.59	-1.7
4	100.82	0.9	-0.3	99.57	-1.6
5	100.43	-0.4	0.1	99.58	-1.5
6	101.36	0.9	1.0	99.66	-1.3
7	99.96	-1.4	1.4	99.78	-1.1
8	99.83	-0.1	1.9	99.93	-0.8
9	102.19	2.4	2.2	100.11	-0.4
10	103.75	1.5	3.4	100.40	0.0
11	104.24	0.5	4.8	100.80	0.6
12	104.95	0.7	5.1	101.22	1.2
<b>Annual average</b>	<b>101.22</b>	-	-	<b>101.22</b>	<b>1.2</b>
<b>2022 : 1</b>	104.68	-0.3	6.2	101.74	1.9
2	105.84	1.1	7.2	102.33	2.6
3	108.75	2.7	8.9	103.07	3.5
4	111.08	2.1	10.2	103.92	4.4
5	111.80	0.7	11.3	104.87	5.3
6	113.62	1.6	12.1	105.89	6.2
7	111.54	-1.8	11.6	106.86	7.1
8	111.21	-0.3	11.4	107.81	7.9
9	114.48	2.9	12.0	108.83	8.7
10	113.16	-1.2	9.1	109.61	9.2
11	113.15	0.0	8.5	110.36	9.5
12	112.53	-0.5	7.2	110.99	9.6
<b>Annual average</b>	<b>110.99</b>	-	-	<b>110.99</b>	<b>9.6</b>
<b>2023 : 1</b>	111.99	-0.5	7.0	111.60	9.7
2	112.33	0.3	6.1	112.14	9.6
3	113.73	1.2	4.6	112.55	9.2
4	114.45	0.6	3.0	112.83	8.6
5	114.91	0.4	2.8	113.09	7.8
6	115.62	0.6	1.8	113.26	7.0
7	114.30	-1.1	2.5	113.49	6.2
8	114.26	0.0	2.7	113.74	5.5
9	116.34	1.8	1.6	113.90	4.7
10	117.00	0.6	3.4	114.22	4.2
11	116.57	-0.4	3.0	114.50	3.8
12	116.47	-0.1	3.5	114.83	3.5
<b>Annual average</b>	<b>114.83</b>	-	-	<b>114.83</b>	<b>3.5</b>
<b>2024 : 1</b>	115.50	-0.8	3.1	115.12	3.2
2	115.61	0.1	2.9	115.40	2.9
3	117.39	1.5	3.2	115.70	2.8
4	117.96	0.5	3.1	116.00	2.8
5	117.66	-0.3	2.4	116.23	2.8
6	118.24	0.5	2.3	116.44	2.8
7	117.38	-0.7	2.7	116.70	2.8
8	117.68	0.3	3.0	116.98	2.9

Note: The indices are rounded up to two decimal figures when published and percentage changes up to one decimal figure when published.

**Table 4. Major price changes from index comparison between  
August 2024 and July 2024 and their impact  
on the Overall CPI**

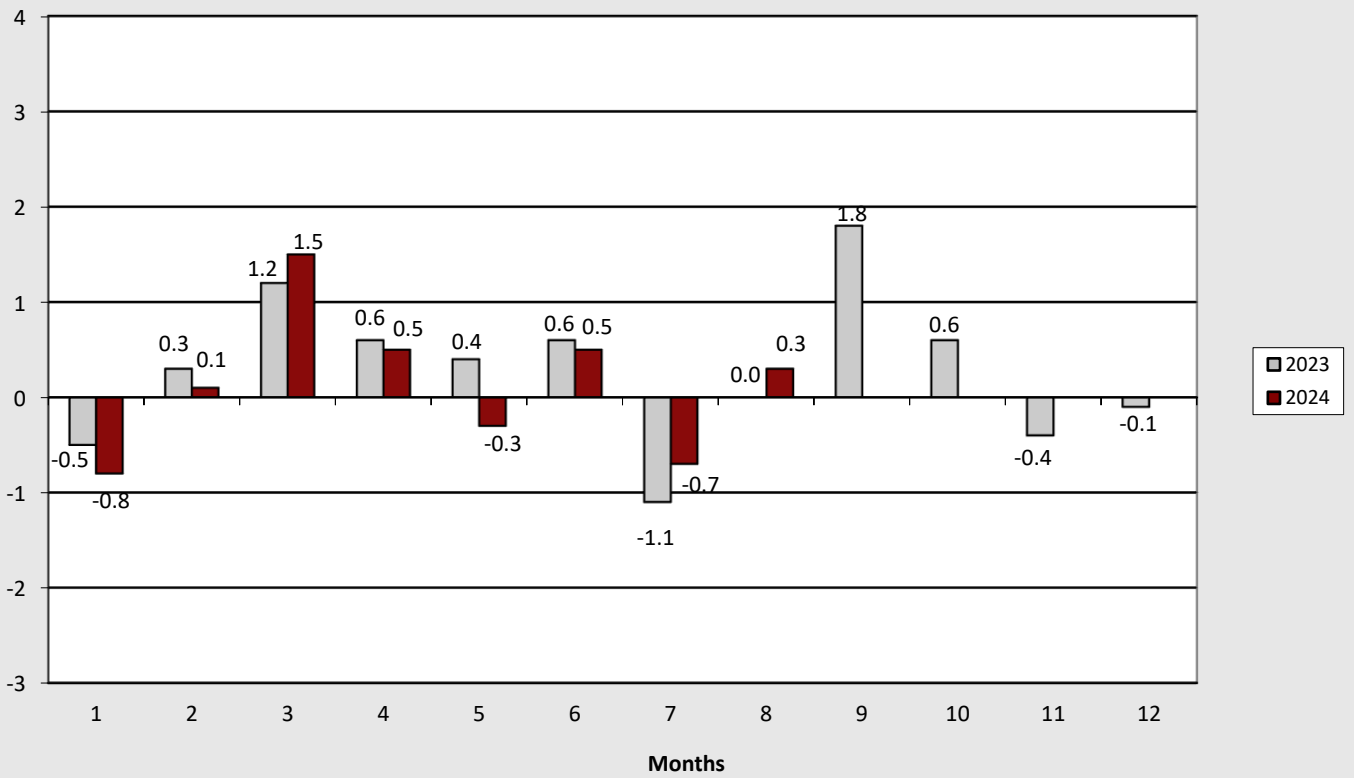
<b>Goods and services</b>	<b>Rate of change (%)</b>	<b>Impact</b>
Fresh fish	1.4	0.02
Cheese	1.1	0.02
Fresh fruit	1.2	0.02
Fresh vegetables	2.8	0.04
Bread and cereals	-0.4	-0.01
Poultry	-1.3	-0.01
Yoghurt	-2.8	-0.01
Olive oil	-1.2	-0.01
Alcoholic beverages (not served)	-0.7	-0.01
Rentals for dwellings	0.8	0.03
Repair and maintenance of the dwelling	1.3	0.01
Electricity	10.9	0.31
Non-durable household articles	-0.8	-0.01
Pharmaceutical products	3.9	0.10
Fuels and lubricants	-2.2	-0.12
Telephone services	0.3	0.01
Restaurants-confectioneries-cafes-buffets	0.3	0.04
Hotels-motels-inns	-4.5	-0.03
Other appliances and articles for personal care	2.8	0.08
Summer sales	-	-0.21

**Table 5. Major price changes from index comparison between August 2024 and August 2023 and their impact on the Overall CPI**

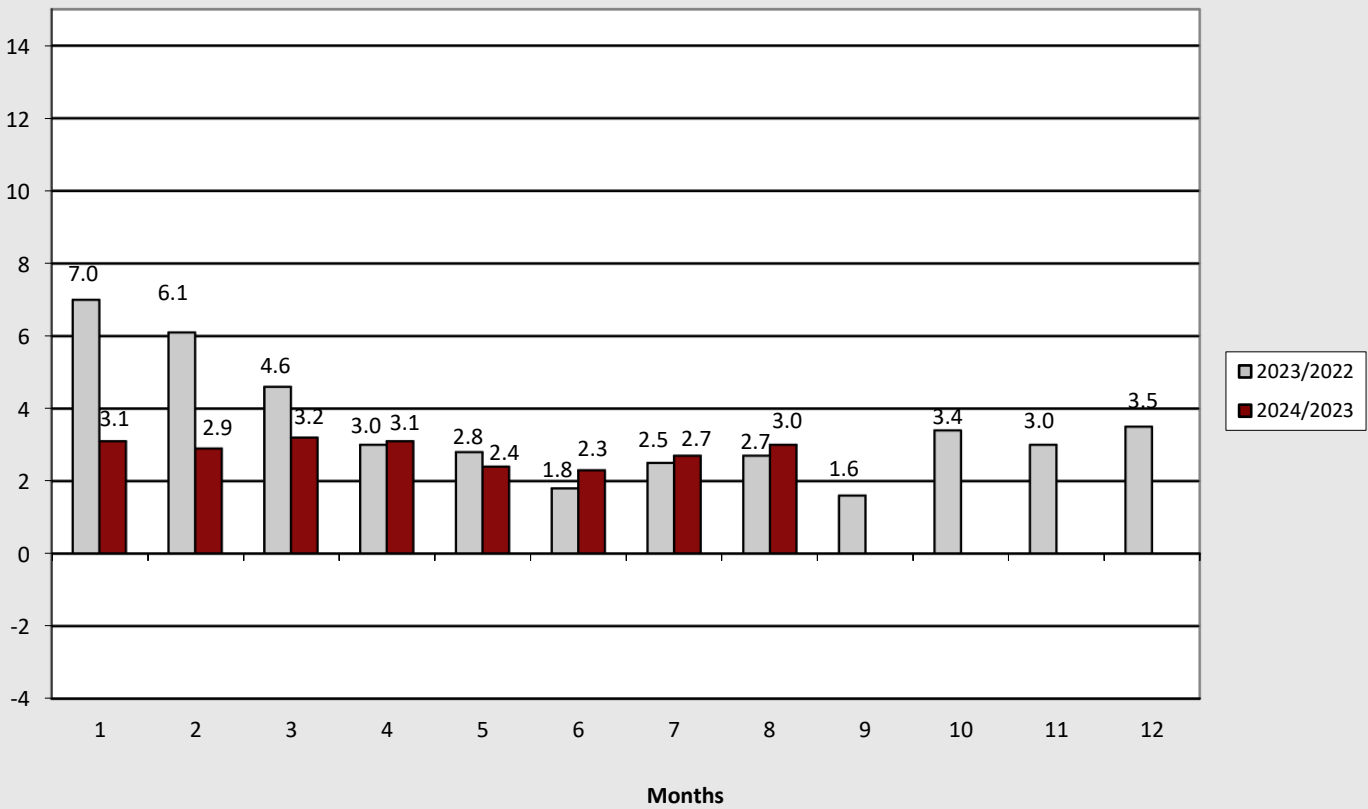
<b>Goods and services</b>	<b>Rate of change (%)</b>	<b>Impact</b>
Bread	1.0	0.02
Breakfast cereals	11.2	0.03
Meat	1.4	0.07
Fresh fish	11.3	0.12
Olive oil	49.1	0.42
Dried fruit and nuts	5.0	0.01
Fresh vegetables	3.1	0.05
Preserved or processed vegetables	1.4	0.01
Sugar-chocolates-sweets-ice creams	4.8	0.05
Mineral water-refreshments-fruit juices	6.9	0.04
Pizza and quiche	-6.6	-0.02
Milk-cheese and eggs	-2.0	-0.07
Fresh fruit	-1.1	-0.02
Frozen vegetables	-3.3	-0.01
Potatoes	-4.5	-0.02
Food n.e.c.	-2.6	-0.01
Alcoholic beverages (not served)	1.4	0.03
Clothing and footwear	6.2	0.14
Rentals for dwellings	4.6	0.17
Services for the repair and maintenance of the dwelling	4.4	0.03
Electricity	9.7	0.29
Natural gas	28.0	0.11
Heating oil	6.3	0.11
Municipal charges for refuse collection	-1.5	-0.01
Non-durable household articles	-5.1	-0.09
Furniture and furnishings	3.4	0.01
Domestic services	2.6	0.02
Pharmaceutical products	5.1	0.13
Medical-dental and paramedical services	1.7	0.04
Hospital care	3.5	0.09
Medical products	-2.0	-0.01
New motor cars	2.0	0.04
Spare parts and accessories of motorcars	3.3	0.01
Maintenance and repair of motorcars - motorcycles	3.6	0.02
Other services for motorcars - motorcycles	0.8	0.01
Passenger transport by air	27.3	0.48
Second hand motorcars	-2.8	-0.04
Fuels and lubricants	-5.9	-0.33
Telephone services	0.4	0.02
Small recreational items-flowers-pets	1.7	0.02
Recreational services	2.0	0.02
Newspapers, books and stationery	2.5	0.02
Package holidays	7.2	0.02
Equipment for the reception, recording and reproduction of sound and vision	-5.9	-0.01
Pre-primary and primary education	4.0	0.04
Secondary education	3.6	0.07
Tertiary education	2.8	0.01
Restaurants-confectioneries-cafes-buffets	6.7	0.71
Hotels-motels-inns	7.6	0.02
Hairdressing salons and personal grooming	4.8	0.06
Other appliances and articles for personal care	5.4	0.02
Private insurance connected with health	14.0	0.08
Motor vehicle insurance	5.6	0.08
Other personal effects	-3.7	-0.11



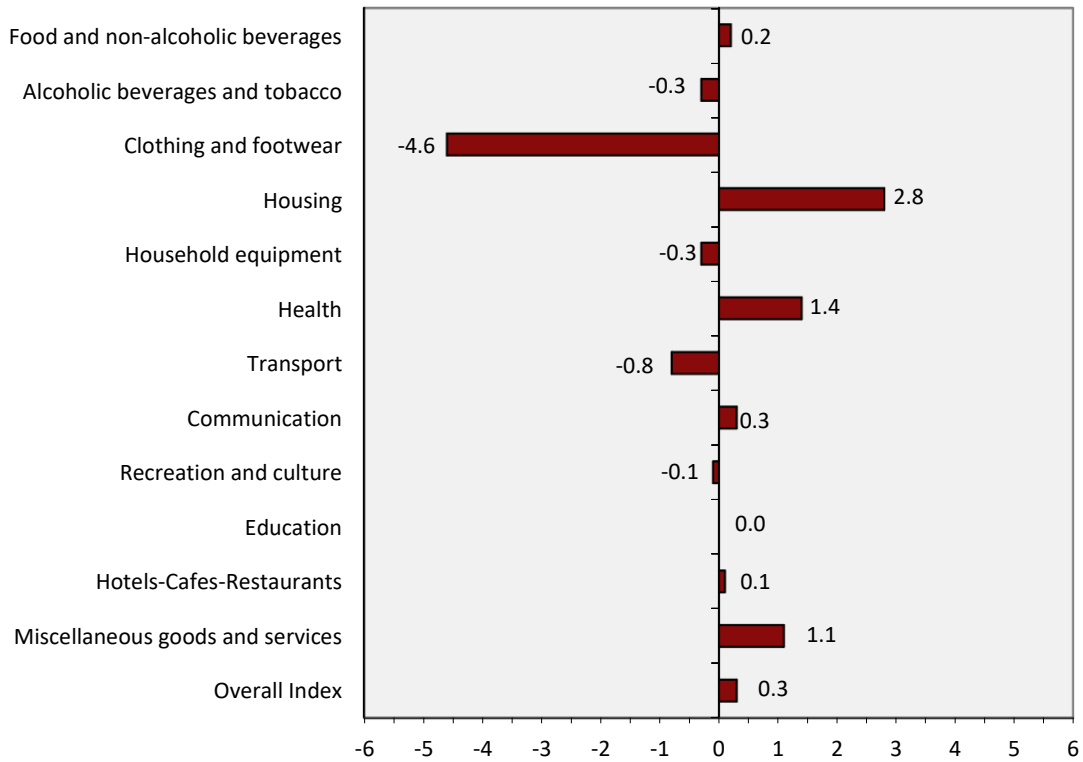
Graph 3. Monthly rates of change (%) of the overall CPI, 2023 and 2024



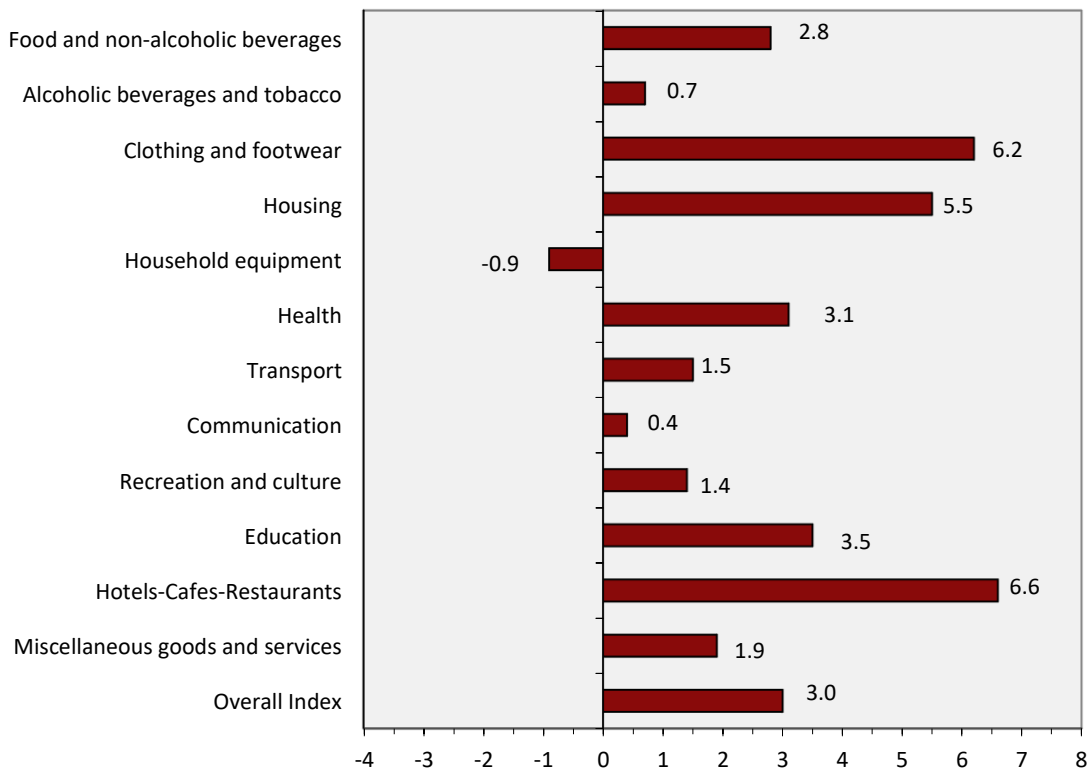
Graph 4. Annual rates of change (%) of the overall CPI, 2023 and 2024



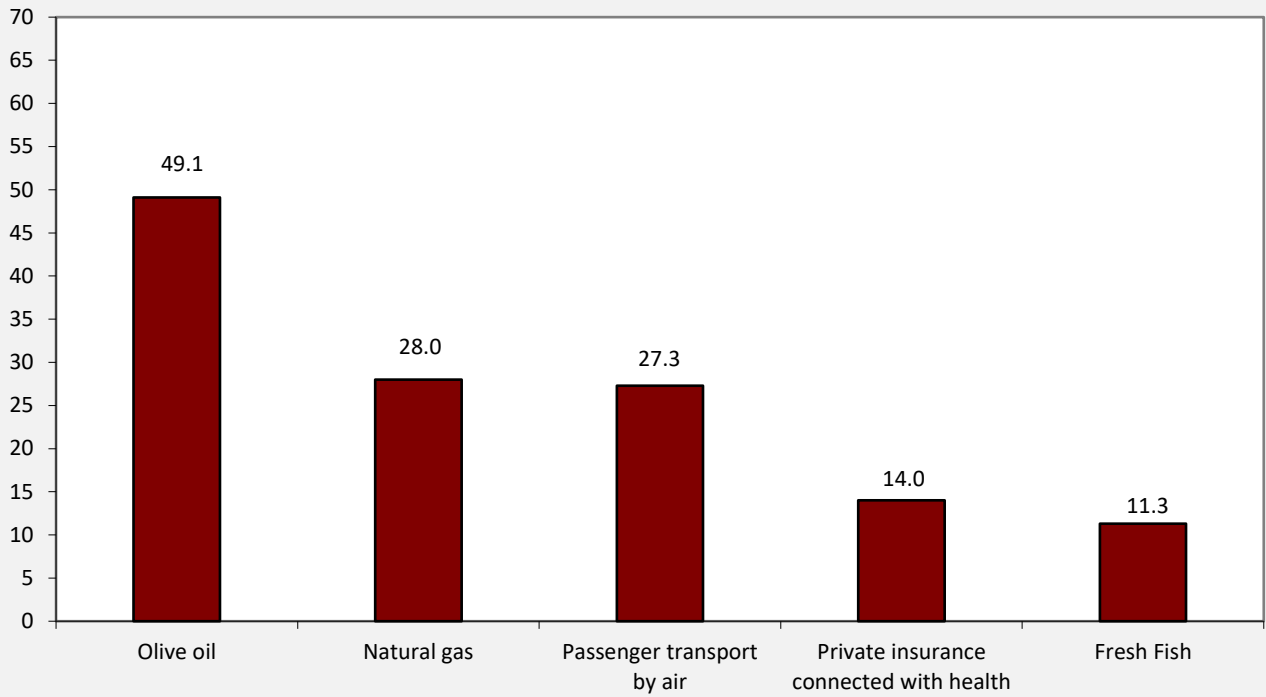
**Graph 5. Monthly rates of change (%) of CPI between August 2024 and July 2024**



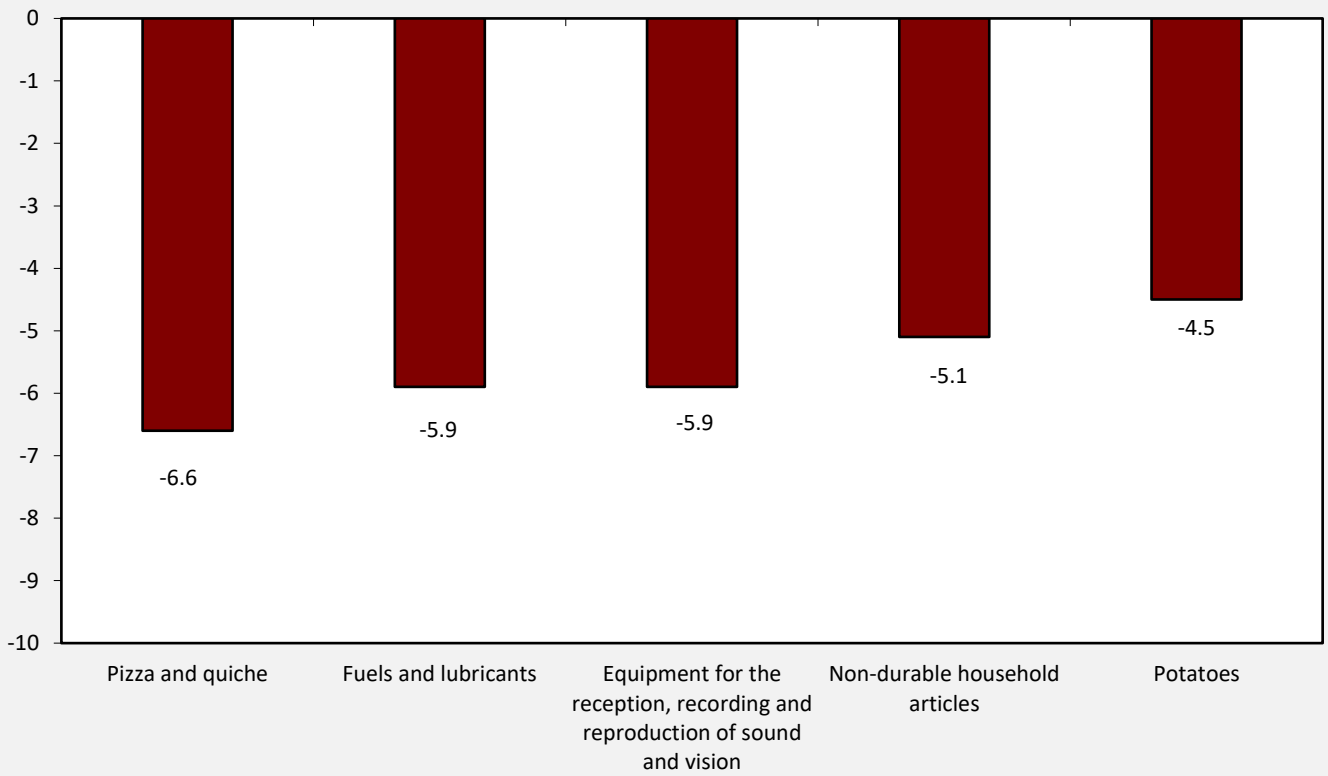
**Graph 6. Annual rates of change (%) of CPI between August 2024 and August 2023**



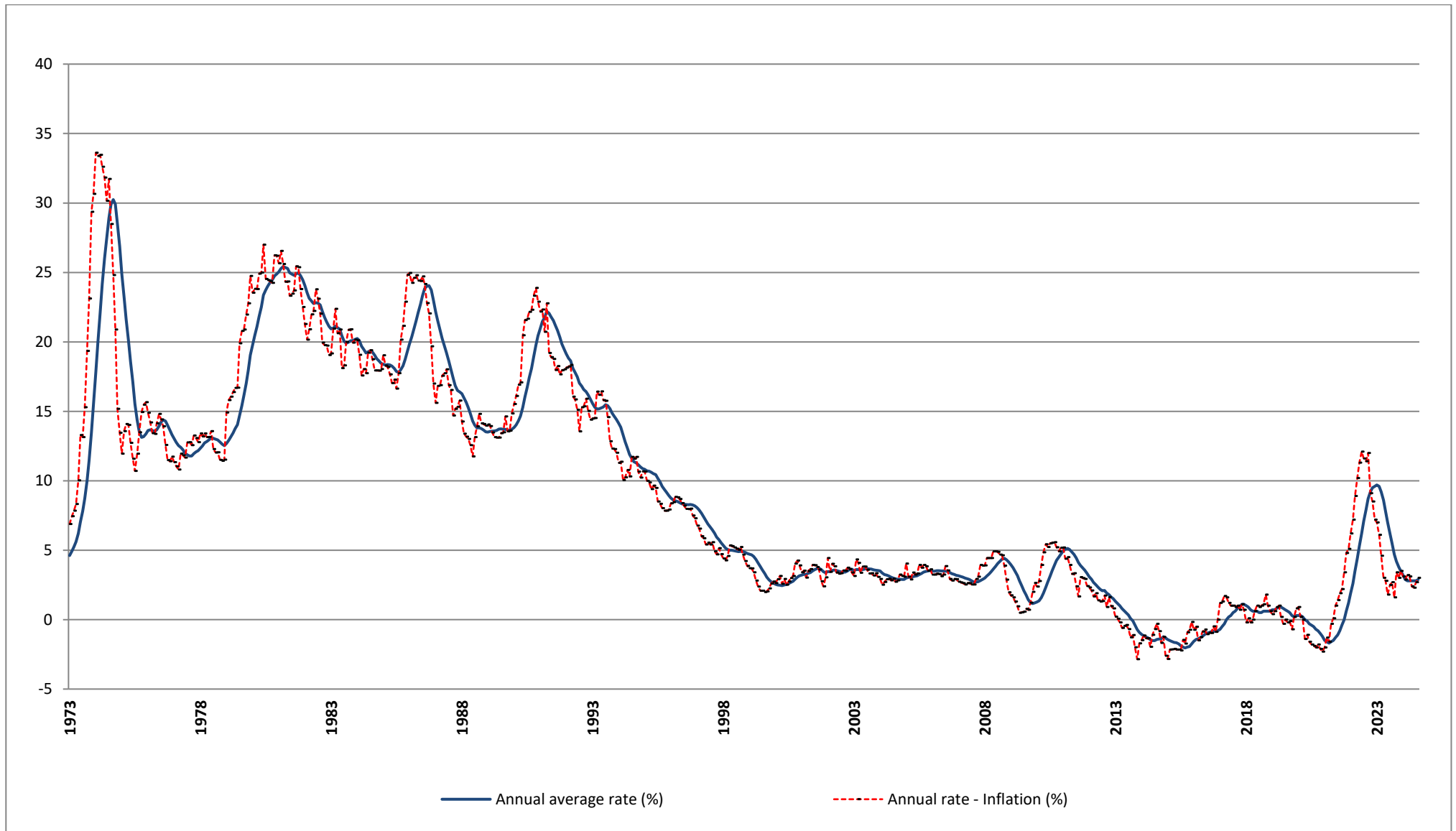
Graph 7. CPI highest annual increases (%)



Graph 8. CPI highest annual decreases (%)



Graph 9. Historical evolution of CPI, 1973 – 2024



## METHODOLOGICAL NOTES

<b>Generally</b>	The Consumer Price Index (CPI) is compiled by the Hellenic Statistical Authority (ELSTAT) since 1959. Until the year 2000, the CPI referred to the urban areas of the Country, while from 2001 onwards it refers to the whole Country covering urban, semi-urban and rural areas.
<b>Purpose of the index</b>	The purpose of the CPI is to measure the general level of prices of goods and services purchased by the average Greek household.
<b>Legal basis</b>	<a href="#">Law 3832/2010</a> .
<b>Reference period</b>	Month.
<b>Base</b>	December of the previous year.
<b>Reference year</b>	2020=100.0.
<b>Chain linking Index</b>	The CPI index follows the chain linking method, introducing new weights annually and having as a base the December of the previous year. The weights are estimated on the basis of the most recent available data of the Household Budget Survey (HBS), extrapolated to the prices of December. The CPI, adjusted on an annual basis to the most recent consumption expenditure pattern of the private households of the Country, ensures the representativeness of goods and services, which compose the “basket” of purchases of the average household.
<b>Geographical and population coverage of the CPI</b>	The CPI refers to the whole Country and covers the resident households of the territory excluding collective households (hospitals, homes for the elderly, boarding houses, prisons, etc.) and non-resident households (tourists) in the Country.
<b>Classification of items</b>	The classification of the CPI items (goods and services) is based on the international classification COICOP (Classification of Individual Consumption by Purpose) as this has been adapted to the needs of the HICPs of the EU Member States with the COICOP5/HICP classification.
<b>Weights of items</b>	The weights of CPI items are updated every year, on the basis of the most recent available data of HBS. The weights are calculated as the share (%) of the expenditures for each group, subgroup and item (good or service) to the total household expenditure of the average household.
<b>Price collection Cities</b>	The CPI prices are collected in 27 cities with representative markets for the coverage of the 13 Regions of the Country. The selection criteria of the price collection cities are the size and the particularities of their markets, the possibility of continuous price collection, the comparability of the index and the cost of price collection.
<b>Population weights</b>	The calculation of the population weights by regions is based on the population data of the 2011 General Population Census and the expenditure data of the latest available HBS by regions.
<b>Selection of items</b>	<a href="#">The composition of the "household basket"</a> i.e. the selection of goods and services which are included in the calculation of CPI is updated annually, using the results of the latest available HBS, other market research, etc. The chain linking methodology allows the change of items of the household basket on an annual basis, in order to ensure the representativeness of the items involved in the calculation of groups and subgroups of CPI.
<b>Price collection-Outlets</b>	The prices collection outlets are retail stores, enterprises providing services, street markets etc. which are considered representative of the branches of shops, where the households make their purchases in the 27 selected cities. The methodology allows the renewal of price collection sources, annually, in order to maintain their representativeness in the calculation of CPI. Prices are collected by employees of ELSTAT as well as by external price collectors, hired on a temporary basis. They pay a visit to the selected outlets within a specific time period of a month (monthly prices) or on a specific day of the week (weekly prices). The collected prices correspond to the prices actually faced by the consumer.
<b>Specification-Substitution of items</b>	All the collected items are defined by the specification, that is the particular characteristics which determine the quality, the trade show and the identity, in general, of good products (such as brand, weight, package etc), in order to avoid any price variations attributable to differences in the specification. Once a specified item (good or service) is no longer available in the market or has ceased to be important, as regards consumption, it is substituted by a newly specified item, which has taken its place in the market.

**Calculation of the Consumer Price Index**

The Consumer Price Index is a Laspeyres-type index and it is calculated based on December of the previous year.

**Implementation of formula in five-digit level of COICOP5**

Specifically, if the five-digit item h includes q price collected items, then its index in month t of year T,  $R_h^{t,T}$ , is given by the following formula:

$$R_h^{t,T} = R_h^{12,T-1} \left[ \frac{\sum_{i=1}^q w_i^T R_i^{t,T} / R_i^{12,T-1}}{\sum_{i=1}^q w_i^T} \right],$$

where:

$R_h^{12,T-1}$  = the index of the five-digit item h, in December of year T-1.

$w_i^T$  = the weight of the price collected item i, in year T.

$R_i^{t,T}$  = the index of the price collected item i, in month t of year T.

$R_i^{12,T-1}$  = the index of the price collected item i, in December of year T-1.

A similar methodology is followed for the calculation of indices in the upper levels (two-digit, three-digit and four-digit) of COICOP5 and the calculation of the overall CPI as well.

**Publication of data** The published CPI time series (reference year 2020=100.0), covers the period from January 1959 onwards. The CPI data are released each month as scheduled, in accordance with the Releases Calendar of ELSTAT, with the [Release and the tables](#).

**References** Further information concerning the methodology and the compilation of the CPI is available in the [Single Integrated Metadata Structure \(SIMS\)](#).