

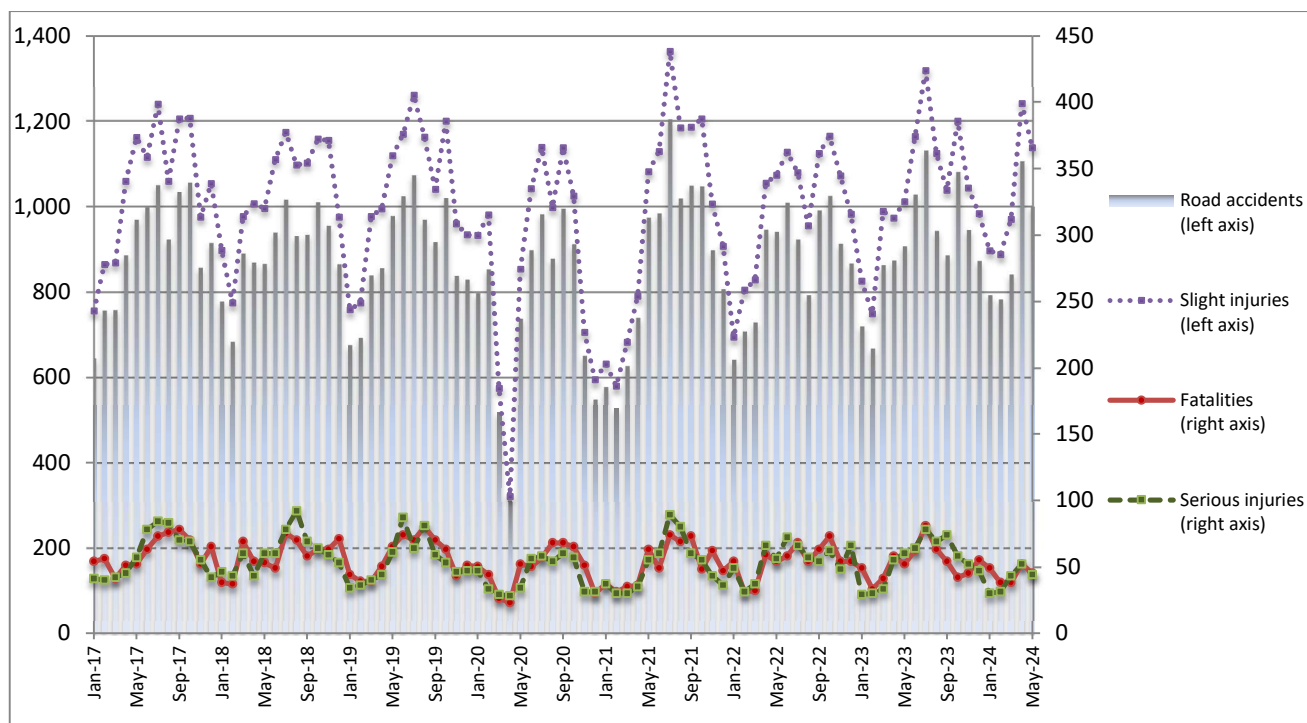


## ROAD TRAFFIC ACCIDENTS: May 2024

The Hellenic Statistical Authority (ELSTAT) announces provisional<sup>1</sup> data from the survey on “Road Traffic Accidents” for May 2024. In particular, the road traffic accidents which occurred in Greece, resulting in death or injury, increased by 10.3% in comparison with the corresponding month of 2023 (1,000 road accidents in May 2024, against 907 road accidents in May 2023).

The casualties of the injury-causing accidents that occurred in May 2024 were as follows: 45 deaths, 44 serious injuries and 1,138 slight injuries. In contrast, in May 2023 the corresponding figures were: 52 deaths, 60 serious injuries and 1,011 slight injuries. Therefore, road traffic accident casualties in May 2024 decreased by 13.5% for deaths and by 26.7% for serious injuries and increased by 12.6% for slight injuries.

**Graph 1: Road traffic accidents and casualties,  
January 2017 - May 2024**



Provisional data for the period June 2023 – May 2024

**Information on methodological issues:**

Sectoral Statistics Division  
Transport Statistics Section  
L. Miliara  
Tel: +30 213 135 3095  
e-mail: [l.miliara@statistics.gr](mailto:l.miliara@statistics.gr)

**Information for data provision:**

Tel: +30 213 135 2022, 2308, 2310  
e-mail: [data.dissem@statistics.gr](mailto:data.dissem@statistics.gr)

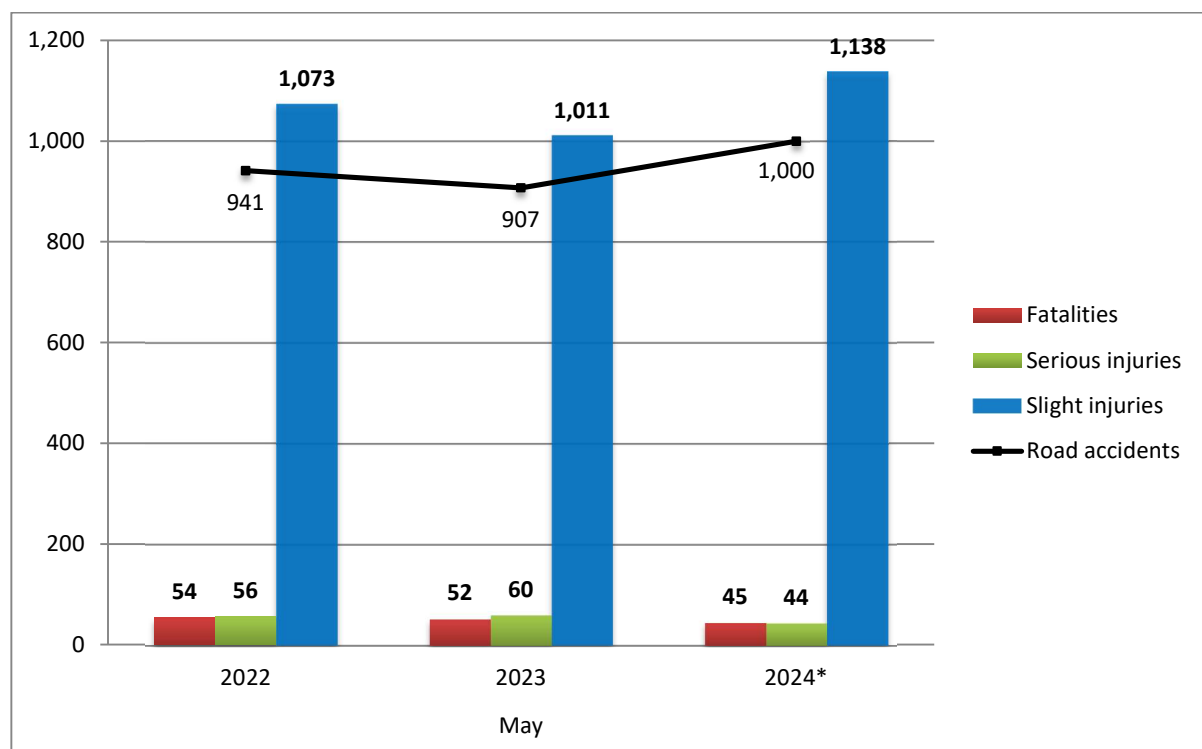
<sup>[1]</sup> Data for the reference year is provisional until the finalization of the annual data, which takes place 12 months after the end of the reference year and is published in the corresponding announcement of the following year. During these 12 months the provisional data is updated on the basis of the data of the Road Accident Forms of that year which is transmitted to ELSTAT by Police Authorities (see explanatory notes).

**Table 1: Road traffic accidents and casualties, May 2022 - 2024\***

	May				
	2022	2023	2023/2022 (%)	2024*	2024*/2023 (%)
<b>Road accidents</b>	<b>941</b>	<b>907</b>	<b>-3.6</b>	<b>1,000</b>	<b>10.3</b>
<b>Fatalities</b>	<b>54</b>	<b>52</b>	<b>-3.7</b>	<b>45</b>	<b>-13.5</b>
<b>Total injuries</b>	<b>1,129</b>	<b>1,071</b>	<b>-5.1</b>	<b>1,182</b>	<b>10.4</b>
Serious injuries	56	60	7.1	44	-26.7
Slight injuries	1,073	1,011	-5.8	1,138	12.6

\* Provisional data

**Graph 2: Road traffic accidents and casualties, May 2022 - 2024\***



\* Provisional data

**Table 2: Road traffic accidents and casualties, by region and department, May 2023 and 2024\***

Region and department	Road accidents			Fatalities			Serious injuries			Slight injuries		
	2023	2024*	%	2023	2024*	%	2023	2024*	%	2023	2024*	%
<b>Greece Total</b>	<b>907</b>	<b>1,000</b>	<b>10.3</b>	<b>52</b>	<b>45</b>	<b>-13.5</b>	<b>60</b>	<b>44</b>	<b>-26.7</b>	<b>1,011</b>	<b>1,138</b>	<b>12.6</b>
<b>Anatoliki Makedonia and Thraki (East Macedonia and Thrace)</b>	<b>24</b>	<b>27</b>	<b>12.5</b>	<b>2</b>	<b>1</b>	<b>-50.0</b>	<b>4</b>	<b>3</b>	<b>-25.0</b>	<b>28</b>	<b>33</b>	<b>17.9</b>
Drama	4	3	-25.0	1	0		1	0		4	3	
Evros	10	13	30.0	0	0		0	0		12	16	
Kavala	5	1	-80.0	0	0		0	0		5	1	
Xanthi	4	8	100.0	1	1		3	1		6	10	
Rodopi	1	2	100.0	0	0		0	2		1	3	
<b>Kentriki Makedonia (Central Macedonia)</b>	<b>161</b>	<b>182</b>	<b>13.0</b>	<b>4</b>	<b>4</b>	<b>0.0</b>	<b>7</b>	<b>4</b>	<b>-42.9</b>	<b>190</b>	<b>228</b>	<b>20.0</b>
Imathia	1	3	200.0	0	1		1	1		0	3	
Thessaloniki	139	158	13.7	2	2		5	1		165	205	
Kilkis	4	3	-25.0	0	0		0	0		4	3	
Pella	6	3	-50.0	1	0		1	0		9	3	
Pieria	2	3	50.0	0	1		0	0		2	3	
Serres	2	2	0.0	1	0		0	0		1	2	
Chalkidiki	7	10	42.9	0	0		0	2		9	9	
<b>Dytiki Makedonia (West Macedonia)</b>	<b>2</b>	<b>4</b>	<b>100.0</b>	<b>1</b>	<b>0</b>	<b>-100.0</b>	<b>0</b>	<b>2</b>	<b>-</b>	<b>1</b>	<b>3</b>	<b>200.0</b>
Grevena	0	1	-	0	0		0	0		0	1	
Kastoria	0	1	-	0	0		0	1		0	1	
Kozani	1	2	100.0	1	0		0	1		0	1	
Florina	1	0	-100.0	0	0		0	0		1	0	
<b>Ipeiros (Epirus)</b>	<b>20</b>	<b>9</b>	<b>-55.0</b>	<b>1</b>	<b>0</b>	<b>-100.0</b>	<b>6</b>	<b>1</b>	<b>-83.3</b>	<b>21</b>	<b>11</b>	<b>-47.6</b>
Arta	1	3	200.0	0	0		0	1		1	3	
Thesprotia	8	2	-75.0	1	0		3	0		4	2	
Ioannina	5	3	-40.0	0	0		2	0		3	5	
Preveza	6	1	-83.3	0	0		1	0		13	1	
<b>Thessalia (Thessaly)</b>	<b>13</b>	<b>24</b>	<b>84.6</b>	<b>2</b>	<b>10</b>	<b>400.0</b>	<b>1</b>	<b>0</b>	<b>-100.0</b>	<b>12</b>	<b>16</b>	<b>33.3</b>
Karditsa	3	4	33.3	0	2		0	0		3	3	
Larissa	7	7	0.0	2	2		1	0		6	6	
Magnissia	3	8	166.7	0	4		0	0		3	4	
Trikala	0	5	-	0	2		0	0		0	3	
<b>Ionian Nisia (Ionian Islands)</b>	<b>11</b>	<b>11</b>	<b>0.0</b>	<b>0</b>	<b>3</b>	<b>-</b>	<b>1</b>	<b>1</b>	<b>0.0</b>	<b>13</b>	<b>9</b>	<b>-30.8</b>
Zakynthos	4	1	-75.0	0	0		0	0		5	1	
Kerkyra	4	4	0.0	0	1		1	1		5	2	
Kefallinia	3	3	0.0	0	2		0	0		3	3	
Lefkada	0	3	-	0	0		0	0		0	3	

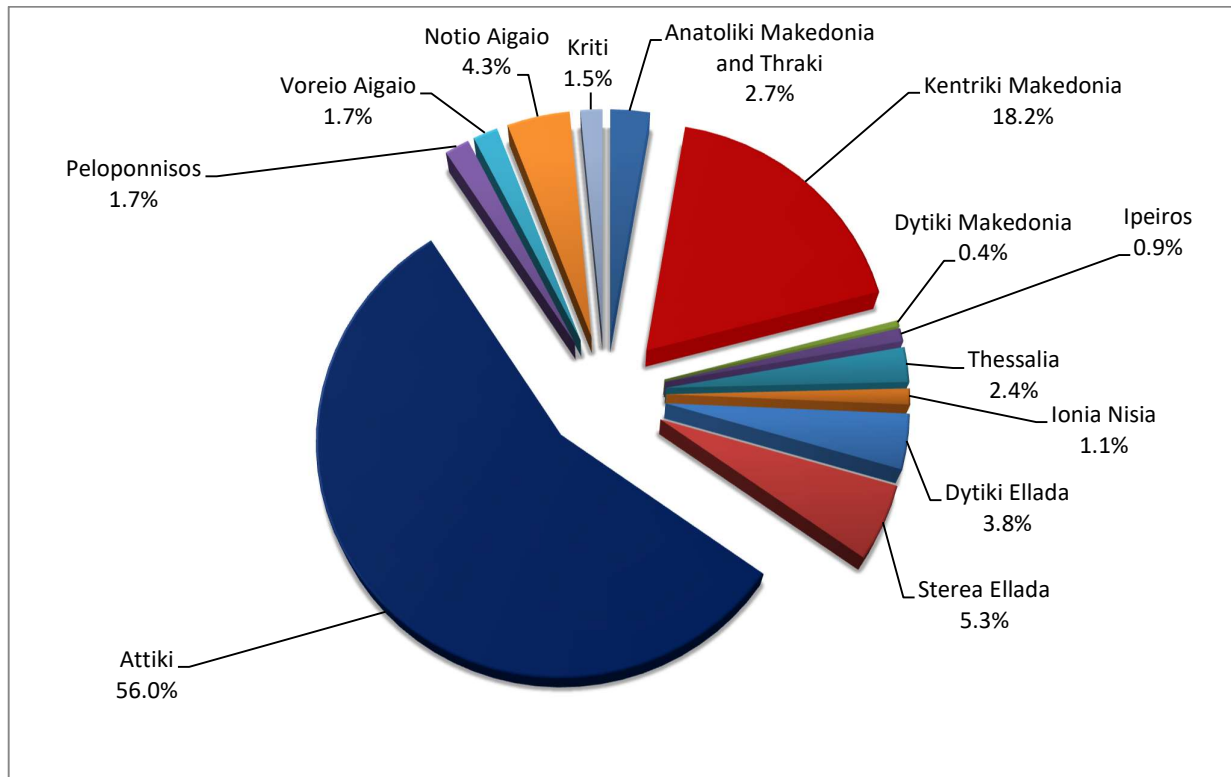
\* Provisional data

**Table 2: Road traffic accidents and casualties, by region and department, May 2023 and 2024\*** (Continued)

Region and department	Road accidents			Fatalities			Serious injuries			Slight injuries		
	2023	2024*	%	2023	2024*	%	2023	2024*	%	2023	2024*	%
<b>Dytiki Ellada (West Greece)</b>	<b>34</b>	<b>38</b>	<b>11.8</b>	<b>4</b>	<b>3</b>	<b>-25.0</b>	<b>4</b>	<b>2</b>	<b>-50.0</b>	<b>36</b>	<b>44</b>	<b>22.2</b>
Etolia & Akarnania	17	16	-5.9	1	0		3	2		23	20	
Achaia	14	15	7.1	2	2		1	0		11	13	
Ilia	3	7	133.3	1	1		0	0		2	11	
<b>Sterea Ellada</b>	<b>46</b>	<b>53</b>	<b>15.2</b>	<b>5</b>	<b>2</b>	<b>-60.0</b>	<b>5</b>	<b>6</b>	<b>20.0</b>	<b>48</b>	<b>63</b>	<b>31.3</b>
Viotia	1	13	1200.0	0	0		2	1		0	16	
Evia	29	24	-17.2	4	0		2	2		33	30	
Evrytania	1	5	400.0	0	1		0	2		1	8	
Fthiotida	13	10	-23.1	1	0		1	1		12	9	
Fokida	2	1	-50.0	0	1		0	0		2	0	
<b>Attiki (Attica)</b>	<b>511</b>	<b>560</b>	<b>9.6</b>	<b>24</b>	<b>14</b>	<b>-41.7</b>	<b>15</b>	<b>12</b>	<b>-20.0</b>	<b>576</b>	<b>630</b>	<b>9.4</b>
<b>Peloponnisos (Peloponnese)</b>	<b>20</b>	<b>17</b>	<b>-15.0</b>	<b>3</b>	<b>4</b>	<b>33.3</b>	<b>3</b>	<b>2</b>	<b>-33.3</b>	<b>18</b>	<b>15</b>	<b>-16.7</b>
Argolida	2	1	-50.0	1	0		0	0		1	1	
Arkadia	2	1	-50.0	1	0		1	0		0	1	
Korinthia	11	8	-27.3	1	0		0	1		12	8	
Lakonia	1	2	100.0	0	2		0	0		1	0	
Messinia	4	5	25.0	0	2		2	1		4	5	
<b>Voreio Aigaio (North Aegean)</b>	<b>19</b>	<b>17</b>	<b>-10.5</b>	<b>2</b>	<b>1</b>	<b>-50.0</b>	<b>2</b>	<b>2</b>	<b>0.0</b>	<b>20</b>	<b>20</b>	<b>0.0</b>
Lesvos	16	12	-25.0	1	0		2	2		17	15	
Samos	2	5	150.0	0	1		0	0		3	5	
Chios	1	0	-100.0	1	0		0	0		0	0	
<b>Notio Aigaio (South Aegean)</b>	<b>32</b>	<b>43</b>	<b>34.4</b>	<b>3</b>	<b>0</b>	<b>-100.0</b>	<b>8</b>	<b>6</b>	<b>-25.0</b>	<b>36</b>	<b>49</b>	<b>36.1</b>
Dodekanissos	15	26	73.3	2	0		3	6		16	28	
Kyklades	17	17	0.0	1	0		5	0		20	21	
<b>Kriti (Crete)</b>	<b>14</b>	<b>15</b>	<b>7.1</b>	<b>1</b>	<b>3</b>	<b>200.0</b>	<b>4</b>	<b>3</b>	<b>-25.0</b>	<b>12</b>	<b>17</b>	<b>41.7</b>
Iraklio	4	8	100.0	0	1		2	1		3	13	
Lassithi	1	1	0.0	0	0		0	0		1	1	
Rethymno	3	3	0.0	0	1		0	1		3	1	
Chania	6	3	-50.0	1	1		2	1		5	2	

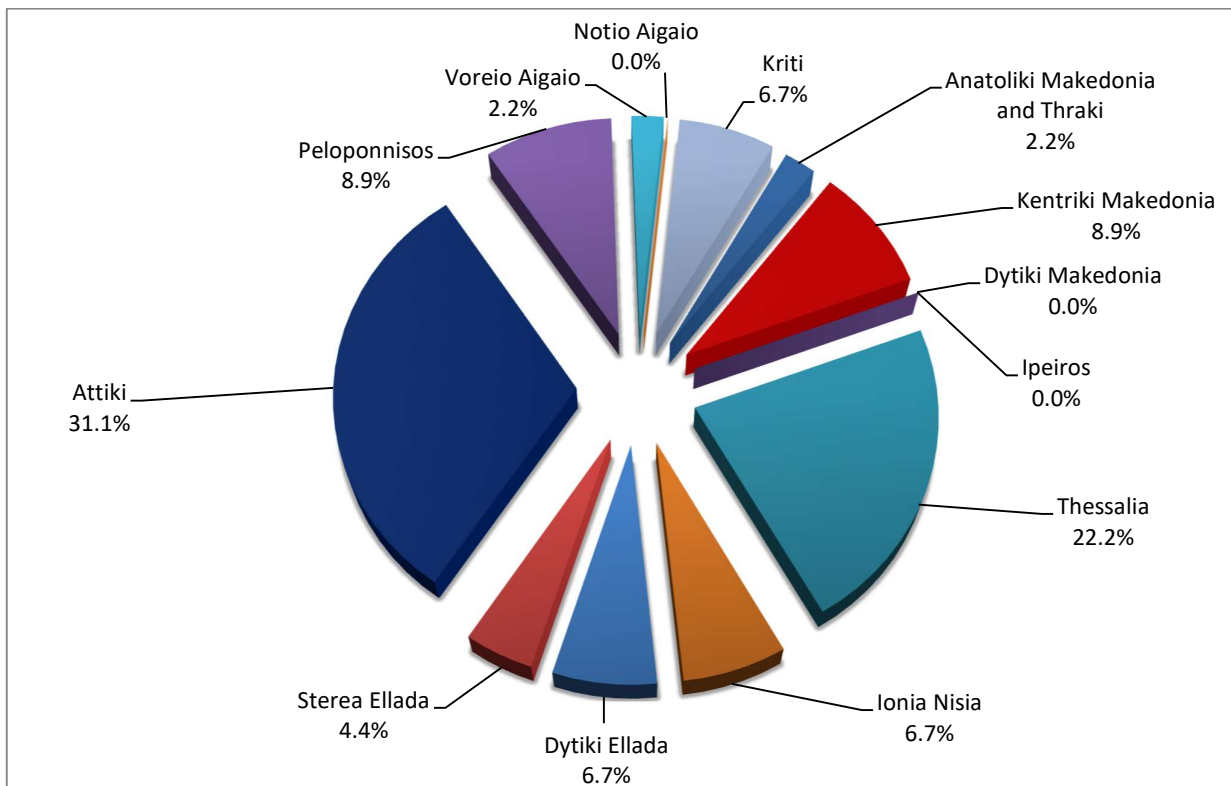
\* Provisional data

**Graph 3: Road traffic accidents by region, May 2024 \***



\* Provisional data

**Graph 4: Fatalities by region, May 2024 \***



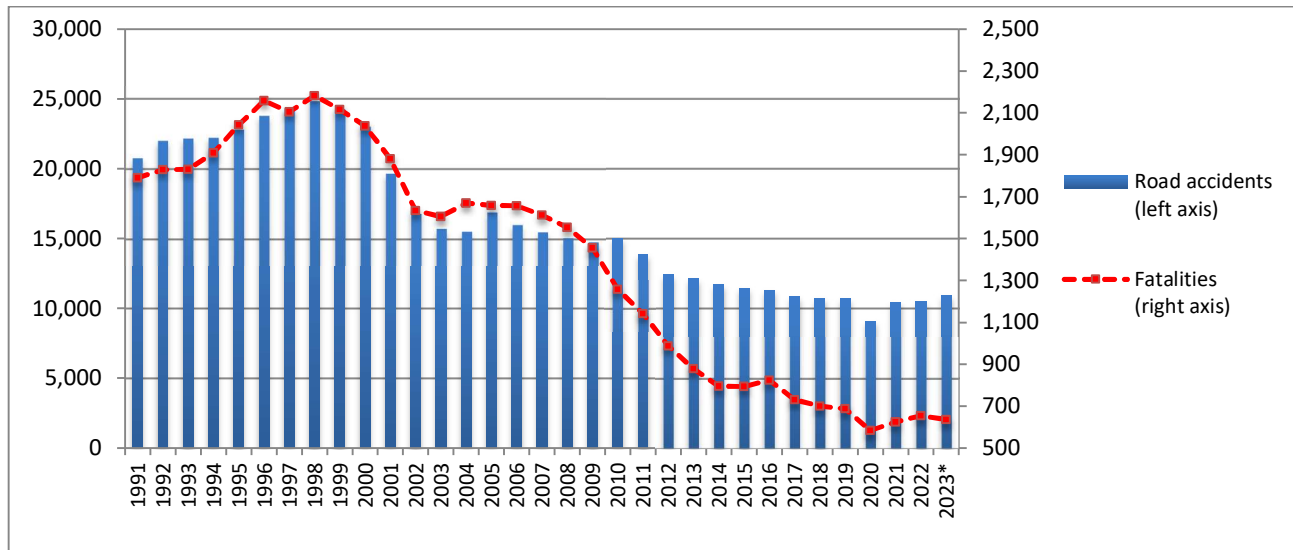
\* Provisional data

**Table 3: Road traffic accidents and casualties for the period January - May 2022, 2023 and 2024\***

	2022		2023		2024 *
	January - May	Total year	January - May	Total year*	January - May
<b>Road Accidents</b>	3,966	<b>10,487</b>	4,032	<b>10,919</b>	4,523
<i>Annual Change (%)</i>			1.7	4.1	12.2
<b>Fatalities</b>	230	<b>654</b>	233	<b>635</b>	222
<i>Annual Change (%)</i>			1.3	-2.9	-4.7
<b>Serious injuries</b>	239	<b>664</b>	207	<b>649</b>	200
<i>Annual Change (%)</i>			-13.4	-2.3	-3.4
<b>Slight injuries</b>	4,454	<b>11,961</b>	4,547	<b>12,421</b>	5,133
<i>Annual Change (%)</i>			2.1	3.8	12.9

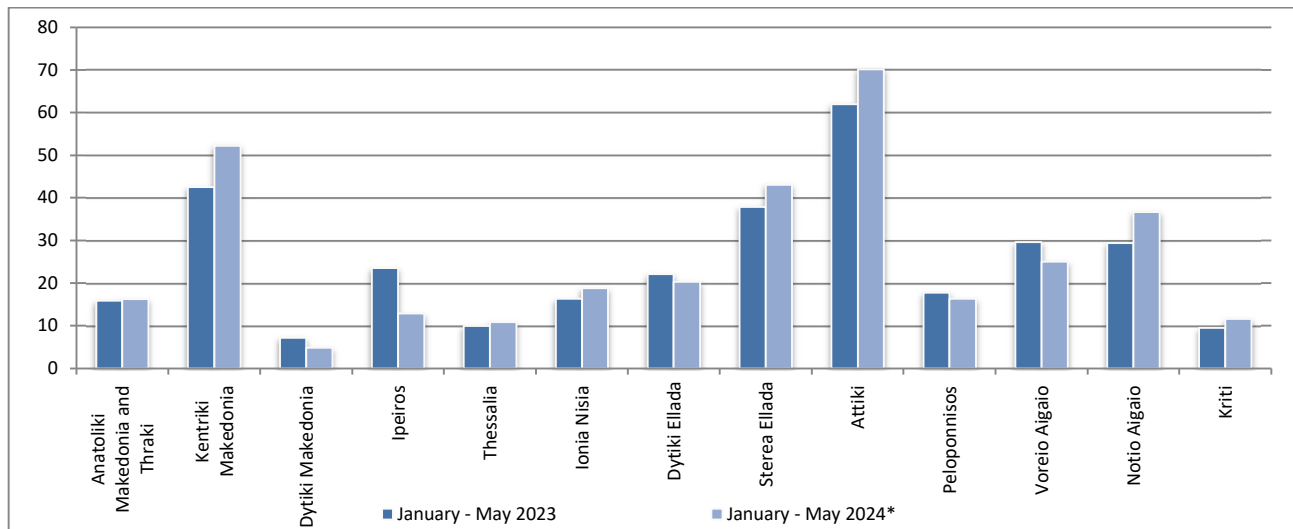
\* Provisional data

**Graph 5: Total road traffic accidents and fatalities, 1991-2023\***



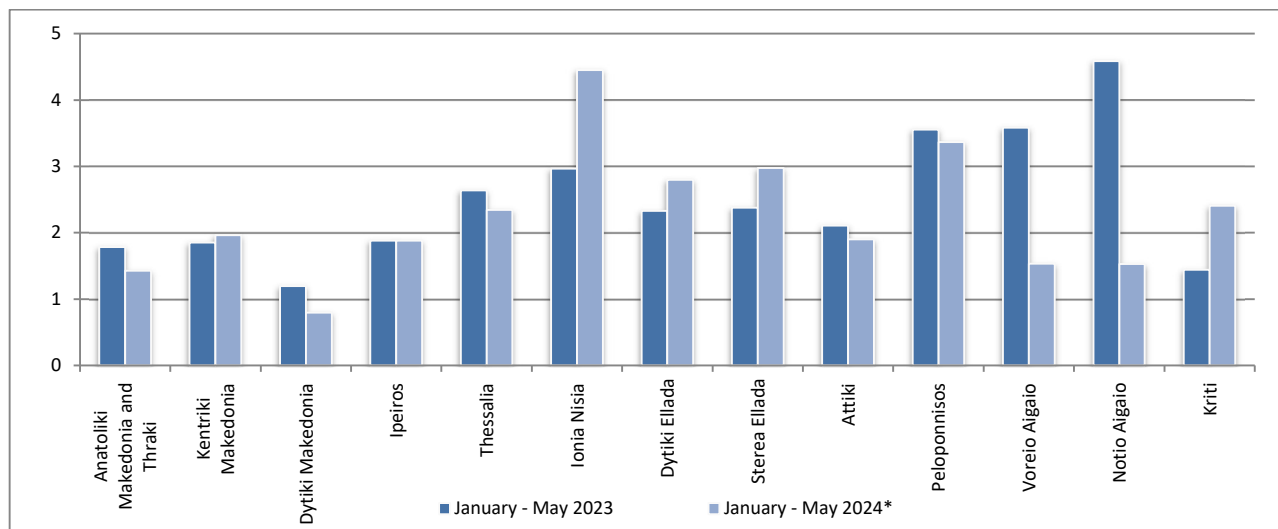
\* Provisional data for the period June 2023 – December 2023

**Graph 6: Road traffic accidents per 100,000 inhabitants, for the period January - May 2023 and 2024\***

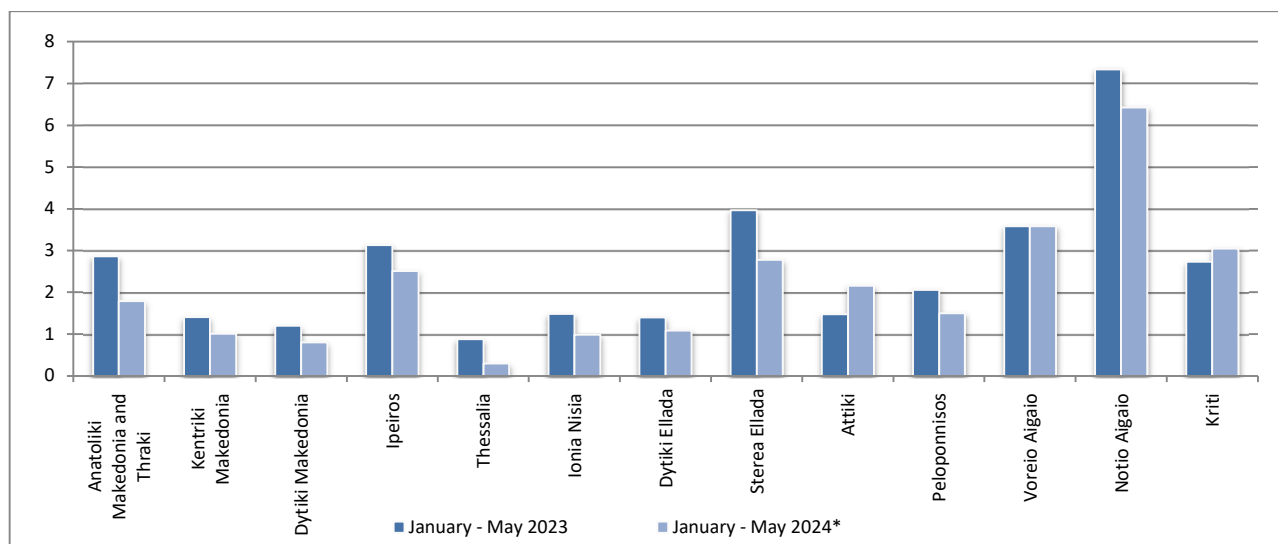


\* Provisional data

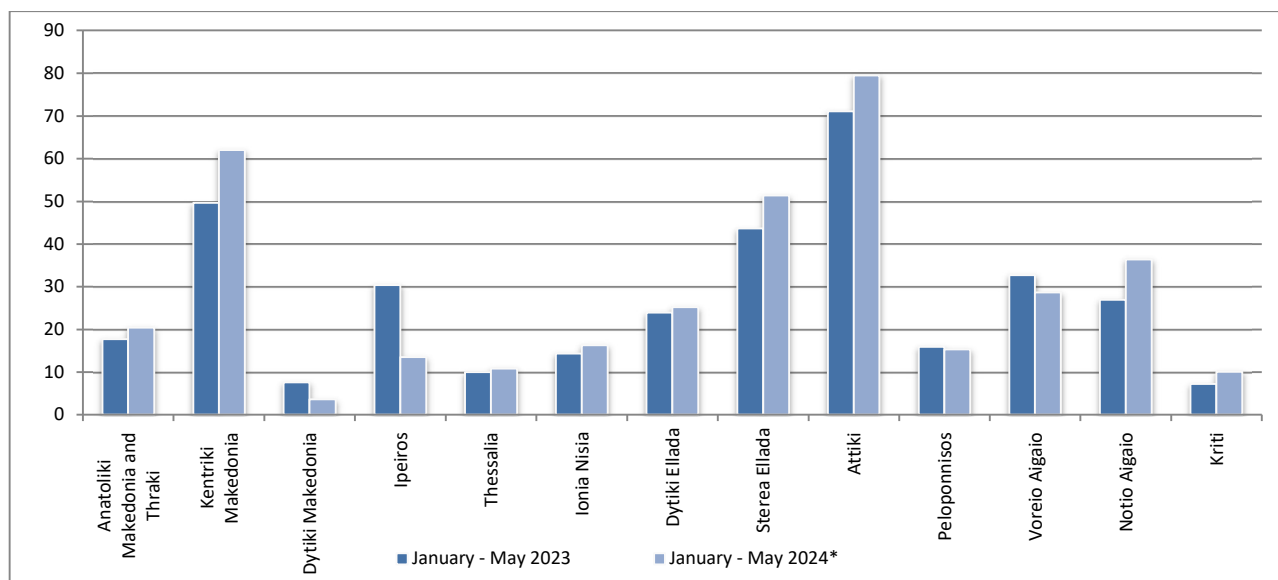
**Graph 7: Fatalities per 100,000 inhabitants, for the period January - May 2023 and 2024\***



**Graph 8: Serious injuries per 100,000 inhabitants, for the period January - May 2023 and 2024\***



**Graph 9: Slight injuries per 100,000 inhabitants, for the period January - May 2023 and 2024\***



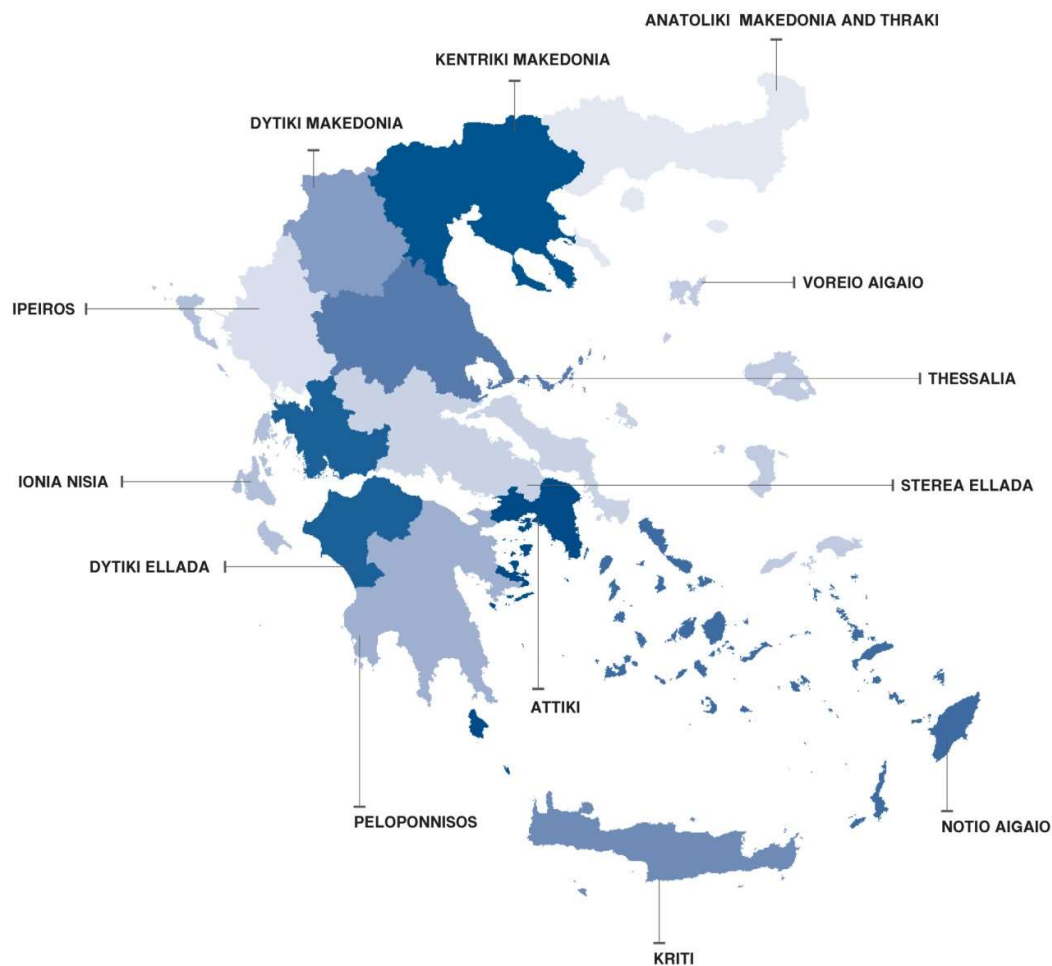
\* Provisional data

## EXPLANATORY NOTES

**Survey on Road Traffic Accidents** The Survey on Road Traffic Accidents is conducted on a monthly basis and it records, for each region (see map) and department of Greece and for each month separately, the number of accidents resulting in death or injury, as well as the number of persons injured by categories (drivers, passengers, pedestrians).

On a yearly basis, road traffic accidents are further analyzed. The competent agencies for filling in/collecting the forms on road accidents are the local Police Authorities and the local Port Authorities of Greece.

The lower level of analysis for the place where an injury road accident occurred is the settlement. Data are collected on a monthly basis. The main variables are the following: place of accident, kind of road, casualties, conditions of road surface and type of road.



**Legal basis** The Survey on Road Traffic Accidents is governed by Council Decision 93/704 of the European Community.

**Reference period** Monthly.

**Availability of data** Provisional data are available 2 months after the reference month.  
Final data are available 12 months after the reference year.



**Definitions** **Road accident** (injury accident): Any accident involving at least one road motor vehicle in motion on a public road or square to which the public has access (excluding yards, industrial sites or vehicle depot of public transport enterprises), resulting in at least one injured or killed person. Accidents with only material damages are not included.

**Fatality (Death):** Any person killed immediately or dying within 30 days as a result of an injury accident (This national definition applies since 01.01.1996)

**Person injured:** Any person who sustained an injury as result of an injury accident, and who normally needs medical treatment.

**Serious injury:** Any person who sustained an injury as result of an injury accident, such as brain damages, mutilation, multiple injuries, which may result in lack of awareness or which are life-threatening.

**Slight injury:** Any person injured who sustained minor and not life-threatening injuries.

**Vehicle:** Include motor vehicles, trolleybuses, motorcycles, bicycles, motorbikes, agricultural and road making machines, animal and hand-drawn vehicles. Railway vehicles are excluded, unless the road accident involves at least one of the aforementioned types of vehicles and therefore, railway vehicles are considered vehicles.

**Methodology** The forms of the survey are filled in by the local Police Authorities and the local Port Authorities as well.

**References** More information about Road Traffic Accidents is available on ELSTAT's website and more specifically at the link: <https://www.statistics.gr/en/statistics/-/publication/SDT03/>.