



HELLENIC REPUBLIC

HELLENIC STATISTICAL AUTHORITY

Piraeus, 14 April 2022

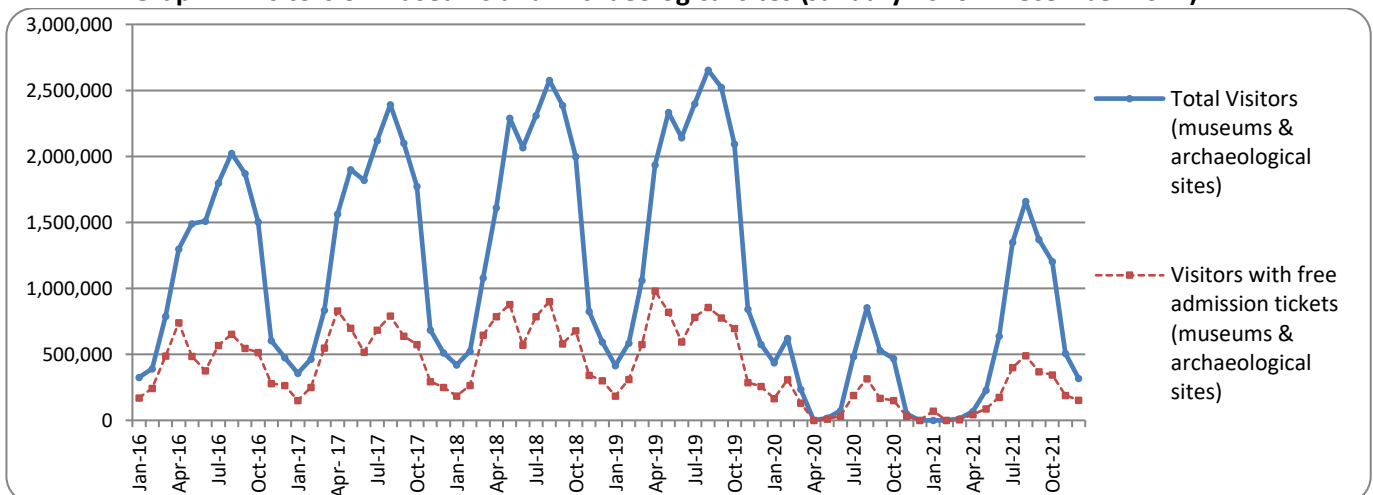
## PRESS RELEASE

### SURVEY ON MUSEUMS AND ARCHAEOLOGICAL SITES ATTENDANCE DECEMBER 2021

The Hellenic Statistical Authority (ELSTAT) announces the results of the *Survey on Museums and Archaeological Sites Attendance* for December 2021. More specifically:

- In December 2021 Museums operated fully, whereas during December 2020 they remained closed, given the fact that in the framework of the preventative measures against the Covid-19 pandemic, the operation of the museums was gradually suspended from November 1<sup>st</sup> 2020 until May 13<sup>th</sup> 2021 (Table 1).
- In December 2021 Archaeological sites operated fully, whereas during December 2021 they remained closed, due to the suspension of operation from November 7<sup>th</sup> 2020 until March 21<sup>st</sup> 2021, in the framework of the preventative measures against the Covid-19 pandemic (Table 1).
- During the twelve month period from January to December 2021, compared to the corresponding period of 2020, an increase of 86.0% was observed in the number of visitors of Museums and an increase of 52.9% was recorded in the number of free admission visitors, while an 156.6% increase was observed in the relevant receipts, given the suspension of operation of Museums, from March 14<sup>th</sup> until June 16<sup>th</sup> 2020 and again gradually from November 1<sup>st</sup> 2020 until May 13<sup>th</sup> 2021, in the framework of the preventative measures against the Covid-19 pandemic (Table 2).
- As regards Archaeological sites, during the twelve month period from January to December 2021, compared to the corresponding period of 2020, an increase of 98.7% was recorded in the number of visitors, while an increase of 49.6% was observed in the number of free admission visitors and an increase of 158.9% was observed in the relevant receipts, given the suspension of operation of Archaeological sites from March 14<sup>th</sup> until May 17<sup>th</sup> 2020 and from November 7<sup>th</sup> 2020 until March 21<sup>st</sup> 2021 in the framework of the preventative measures against the Covid-19 pandemic (Table 2).

**Graph 1: Visitors of Museums and Archaeological sites (January 2016 – December 2021)**



**Information on methodological issues:**

Sectoral Statistics Division  
Tourism and Cultural Statistics Section  
Head of the Section: Asimina Katri  
Tel: +30 213 135 2168  
e-mail: [a.katri@statistics.gr](mailto:a.katri@statistics.gr)

**Information for data provision:**

Tel. +30 213 135 2022, 2308, 2310  
e-mail: [data.dissem@statistics.gr](mailto:data.dissem@statistics.gr)

**TABLE 1: VISITORS OF MUSEUMS AND ARCHAEOLOGICAL SITES - TOTAL RECEIPTS  
(DECEMBER 2020 & DECEMBER 2021)**

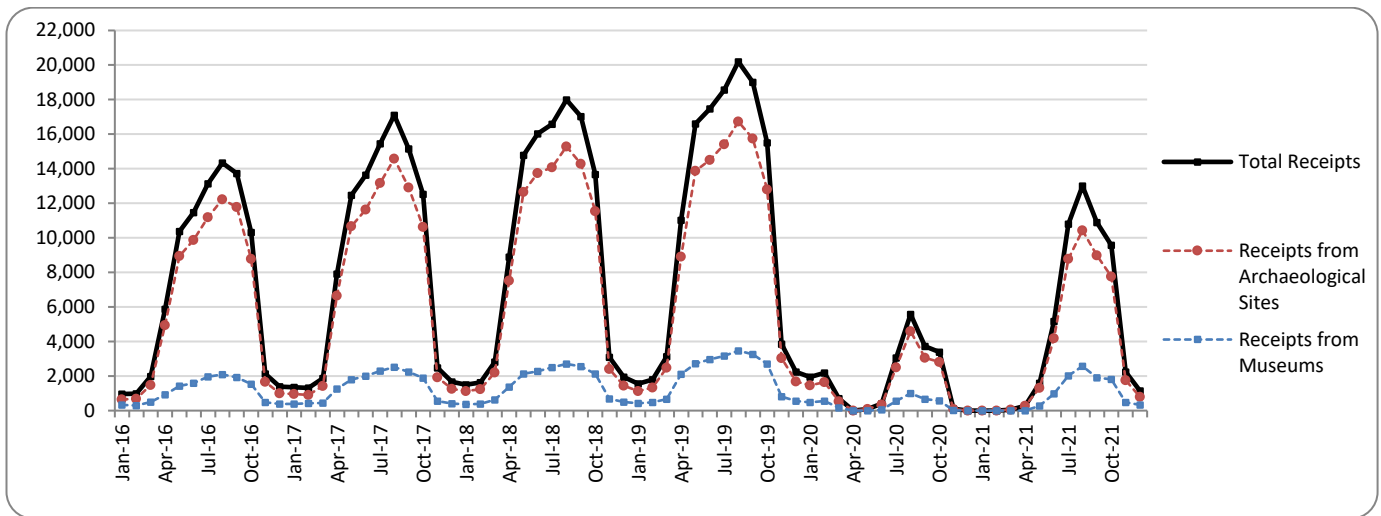
<b>I. NUMBER OF VISITORS</b>			
<b>Museums and Archaeological sites</b>	<b>2020 <sup>(2)</sup></b>	<b>2021 <sup>(2)</sup></b>	<b>Change 2021/2020</b>
<b>Total number of visitors (A+B)</b>	<b>0</b>	<b>318,500</b>	-
<b>A. Museums (C+E)</b>	<b>0</b>	<b>136,796</b>	-
Acropolis Museum	0	37,201	-
National Archaeological	0	14,832	-
Ancient Olympia	0	1,788	-
Palace of the Grand Master (Rhodes)	0	1,731	-
Herakleion Archaeological (Crete)	0	2,563	-
White Tower	0	6,492	-
Delphi	0	5,111	-
Other museums	0	67,078	-
<b>B. Archaeological Sites (D+F)</b>	<b>0</b>	<b>181,704</b>	-
Epidavros <sup>(1)</sup>	0	6,224	-
The Acropolis of Mycenae & Atreus' Treasure	0	6,050	-
The Acropolis of Athens	0	73,044	-
Sounio	0	8,626	-
The Acropolis of Lindos	0	854	-
Royal Tombs of Vergina	0	4,074	-
Ancient Olympia	0	2,901	-
Knossos (Crete)	0	3,694	-
Phaistos (Crete)	0	410	-
Ancient Korinthos <sup>(1)</sup>	0	2,634	-
Mystras <sup>(1)</sup>	0	3,063	-
Delphi	0	7,918	-
Other archaeological sites	0	62,212	-
<b>II. VISITORS WHO PAID TICKET</b>			
	<b>2020 <sup>(2)</sup></b>	<b>2021 <sup>(2)</sup></b>	<b>Change 2021/2020</b>
<b>Total number of visitors who paid ticket (C+D)</b>	<b>0</b>	<b>164,357</b>	-
C. Museums	0	66,302	-
D. Archaeological sites	0	98,055	-
<b>III. VISITORS WITH FREE ADMISSION TICKETS</b>			
	<b>2020 <sup>(2)</sup></b>	<b>2021 <sup>(2)</sup></b>	<b>Change 2021/2020</b>
<b>Total number of visitors with free admission ticket (E+F)</b>	<b>0</b>	<b>154,143</b>	-
E. Museums	0	70,494	-
F. Archaeological sites	0	83,649	-
<b>IV. RECEIPTS (euros)</b>			
	<b>2020 <sup>(2)</sup></b>	<b>2021 <sup>(2)</sup></b>	<b>Change 2021/2020</b>
<b>Total Receipts (G+H)</b>	<b>0</b>	<b>1,142,611</b>	-
G. Museums	0	339,733	-
H. Archaeological sites	0	802,878	-

<sup>(1)</sup> Flat rate ticket, valid both for the museum and the archaeological site.

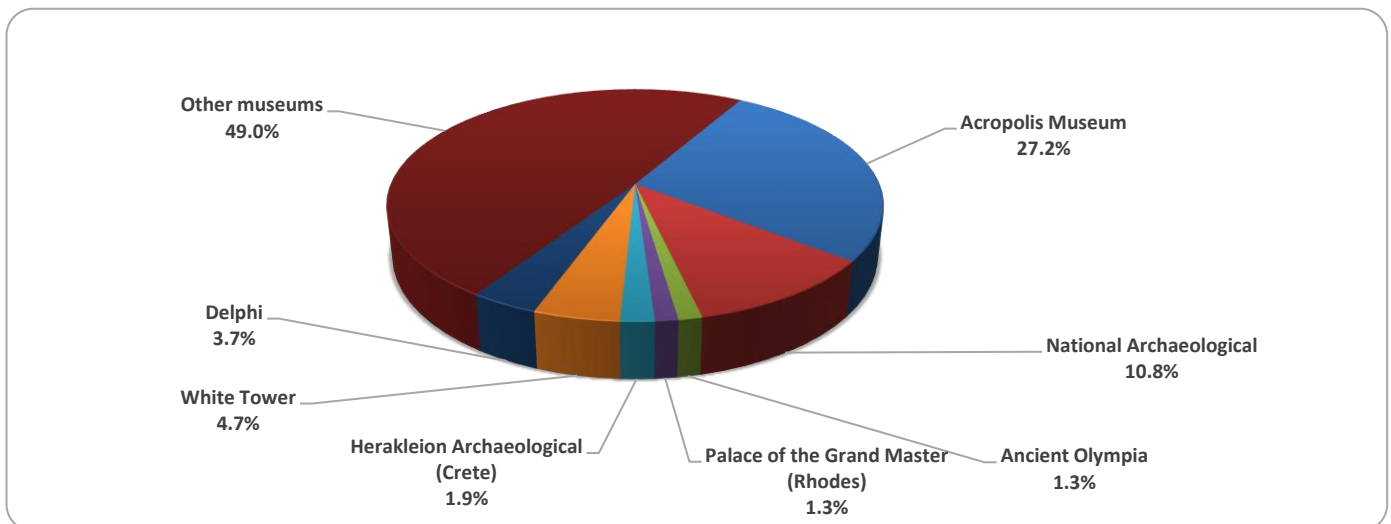
<sup>(2)</sup> The operation of Museums was suspended from March 14<sup>th</sup> until June 16<sup>th</sup> 2020 and again gradually from November 1<sup>st</sup> 2020 until May 13<sup>th</sup> 2021. The operation of Archaeological Sites was suspended from March 14<sup>th</sup> until May 17<sup>th</sup> 2020 and from November 7<sup>th</sup> 2020 until March 21<sup>st</sup> 2021, in the framework of the preventative measures against the Covid-19 pandemic.

The following graphs depict the evolution of the receipts of Museums and Archaeological Sites (Graph 2), as well as the number of visitors by Archaeological Sites (Graph 3).

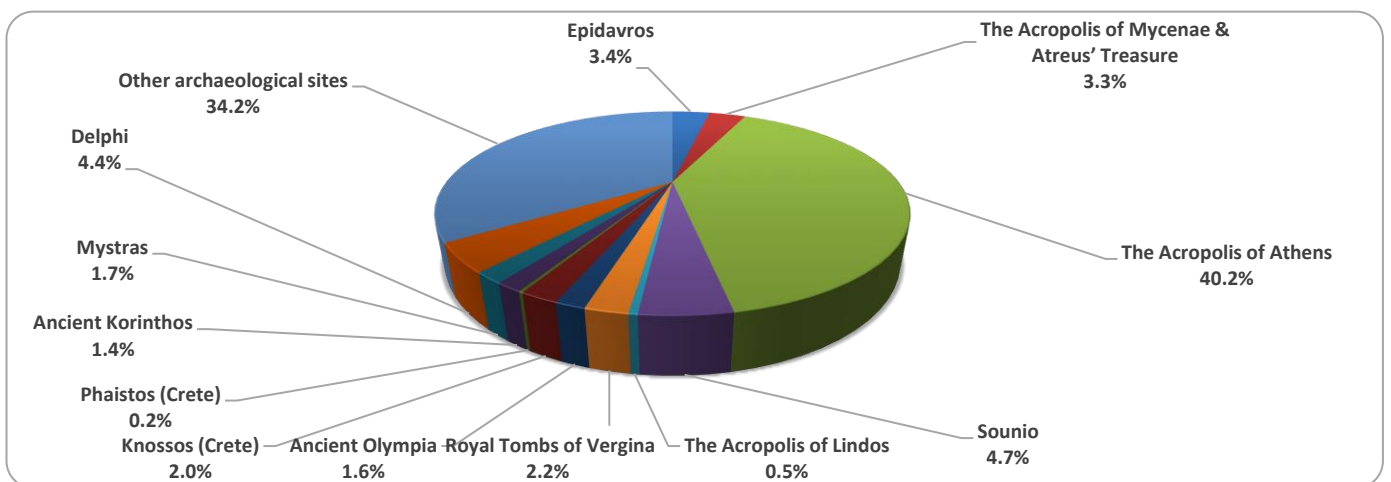
**Graph 2: Receipts from Museums and Archaeological Sites (January 2016 – December 2021)**  
(in thousand euro)



**Graph 3: Percentage distribution of visitors by Museum, December 2021**



**Graph 4: Percentage distribution of visitors by Archaeological site, December 2021**



**TABLE 2: VISITORS OF MUSEUMS AND ARCHAEOLOGICAL SITES - TOTAL RECEIPTS  
(2019, 2020, JANUARY- DECEMBER 2020, 2021)**

<b>I. VISITORS</b>					
Museums and Archaeological sites	2019	2020 <sup>(2)</sup>	JANUARY-DECEMBER		change 2021/2020
			2020 <sup>(2)</sup>	2021 <sup>(2)</sup>	
<b>Total number of visitors (A+B)</b>	<b>19,559,278</b>	<b>3,772,828</b>	<b>3,772,828</b>	<b>7,357,026</b>	<b>95.0%</b>
<b>A. Museums (C+E)</b>	<b>5,895,927</b>	<b>1,100,904</b>	<b>1,100,904</b>	<b>2,047,481</b>	<b>86.0%</b>
Acropolis Museum	1,755,435	325,969	325,969	547,908	68.1%
National Archaeological	608,876	98,175	98,175	189,208	92.7%
Ancient Olympia	159,348	21,956	21,956	34,367	56.5%
Palace of the Grand Master (Rhodes)	263,958	54,572	54,572	142,530	161.2%
Herakleion Archaeological (Crete)	660,533	63,027	63,027	127,574	102.4%
White Tower	251,760	62,007	62,007	77,983	25.8%
Delphi	275,993	41,984	41,984	58,102	38.4%
Other museums	1,920,024	433,214	433,214	869,809	100.8%
<b>B. Archaeological Sites (D+F)</b>	<b>13,663,351</b>	<b>2,671,924</b>	<b>2,671,924</b>	<b>5,309,545</b>	<b>98.7%</b>
Epidavros <sup>(1)</sup>	535,751	103,532	103,532	182,118	75.9%
The Acropolis of Mycenae & Atreus' Treasure	502,619	78,839	78,839	156,227	98.2%
The Acropolis of Athens	3,593,586	620,132	620,132	1,219,717	96.7%
Sounio	337,544	100,319	100,319	171,348	70.8%
The Acropolis of Lindos	525,757	156,462	156,462	349,418	123.3%
Royal Tombs of Vergina	223,151	37,586	37,586	56,790	51.1%
Ancient Olympia	457,710	64,759	64,759	143,549	121.7%
Knossos (Crete)	949,192	175,927	175,927	445,160	153.0%
Phaistos (Crete)	121,796	31,885	31,885	48,599	52.4%
Ancient Korinthos <sup>(1)</sup>	214,023	31,981	31,981	59,271	85.3%
Mystras <sup>(1)</sup>	147,713	36,352	36,352	78,762	116.7%
Delphi	405,348	75,983	75,983	146,061	92.2%
Other archaeological sites	5,649,161	1,158,167	1,158,167	2,252,525	94.5%
<b>II. VISITORS WHO PAID TICKET</b>					
	2019	2020 <sup>(2)</sup>	JANUARY-DECEMBER		change
			2020 <sup>(2)</sup>	2021 <sup>(2)</sup>	2021/2020
<b>Total number of visitors who paid ticket (C+D)</b>	<b>12,434,987</b>	<b>2,268,397</b>	<b>2,268,397</b>	<b>5,090,418</b>	<b>124.4%</b>
C. Museums	3,345,997	605,426	605,426	1,289,896	113.1%
D. Archaeological sites	9,088,990	1,662,971	1,662,971	3,800,522	128.5%
<b>III. VISITORS WITH FREE ADMISSION TICKETS</b>					
	2019	2020 <sup>(2)</sup>	JANUARY-DECEMBER		change
			2020 <sup>(2)</sup>	2021 <sup>(2)</sup>	2021/2020
<b>Total number of visitors with free admission ticket (E+F)</b>	<b>7,124,291</b>	<b>1,504,431</b>	<b>1,504,431</b>	<b>2,266,608</b>	<b>50.7%</b>
E. Museums	2,549,930	495,478	495,478	757,585	52.9%
F. Archaeological sites	4,574,361	1,008,953	1,008,953	1,509,023	49.6%
<b>IV. RECEIPTS (euros)</b>					
	2019	2020 <sup>(2)</sup>	JANUARY-DECEMBER		change
			2020 <sup>(2)</sup>	2021 <sup>(2)</sup>	2021/2020
<b>Total Receipts (G+H)</b>	<b>130,938,846</b>	<b>21,176,036</b>	<b>21,176,036</b>	<b>54,735,194</b>	<b>158.5%</b>
G. Museums <sup>(3)</sup>	23,343,026	4,047,401	4,047,401	10,385,644	156.6%
H. Archaeological sites	107,595,820	17,128,635	17,128,635	44,349,550	158.9%

<sup>(1)</sup> Flat rate ticket, valid both for the museum and the archaeological site.

<sup>(2)</sup> The operation of Museums was suspended from March 14<sup>th</sup> until June 16<sup>th</sup> 2020 and again gradually from November 1<sup>st</sup> 2020 until May 13<sup>th</sup> 2021. The operation of Archaeological Sites was suspended from March 14<sup>th</sup> until May 17<sup>th</sup> 2020 and from November 7<sup>th</sup> 2020 until March 21<sup>st</sup> 2021, in the framework of the preventative measures against the Covid-19 pandemic.

<sup>(3)</sup> Revised data for 2020, due to transmission of additional data from administrative sources.

## EXPLANATORY NOTES

### Survey on Museums and Archaeological Sites Attendance

The Survey on Museums and Archaeological Sites Attendance has been producing results since 1970. The survey collects data from the Hellenic Organization of Cultural Resources Development (HOCRED), supervised by the Ministry of Culture and Sports, on the number of visitors and the receipts from the tickets sold in the Museums and Archaeological sites of the country. The corresponding data for the Acropolis Museum is available from December 2009 onwards.

### Legal Framework

The survey is conducted since 1970 on a regular basis and it produces results on a monthly and yearly basis, in compliance with the Joint Ministerial Decision 15189/B379/73.

### Reference Period

1/12/2021 - 31/12/2021

### Methodology and Definitions

The survey is conducted on a monthly basis from data mainly collected from the Hellenic Organization of Cultural Resources Development (HOCRED), supervised by the Ministry of Culture and Sports, on the number of visitors and the receipts from the tickets sold in the Museums and Archaeological sites of the Country. ELSTAT tabulates and presents the data for the whole of the Country, by month and by year.

#### Number of flat rate tickets:

From April 1999 onwards, in some museums and the nearby archaeological sites, in addition to the ordinary ticket, a new “flat rate ticket” was established, which is valid for both the museum and the nearby archaeological site. The total number of these flat rate tickets for **December 2021** was **4,940**

### References

More information on the Survey on Museums and Archaeological Sites Attendance and detailed time series are available on: <http://www.statistics.gr/en/statistics/-/publication/SCI21/>