



**HELLENIC REPUBLIC**  
**HELLENIC STATISTICAL AUTHORITY**

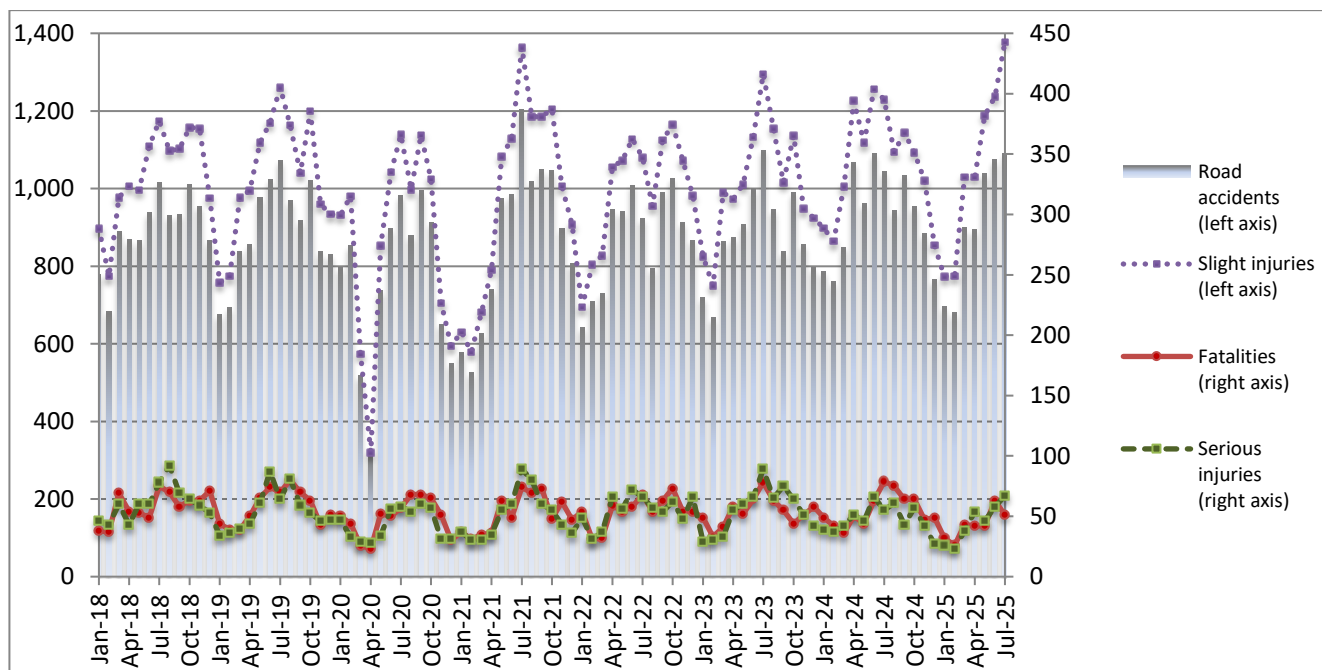
Piraeus, 30 September 2025

## ROAD TRAFFIC ACCIDENTS: July 2025

The Hellenic Statistical Authority (ELSTAT) announces provisional<sup>1</sup> data from the survey on “Road Traffic Accidents” for July 2025. In particular, the road traffic accidents which occurred in Greece, resulting in death or injury, increased by 4.5% in comparison with the corresponding month of 2024 (1,090 road accidents in July 2025, against 1,043 road accidents in July 2024).

The casualties of the injury-causing accidents that occurred in July 2025 were as follows: 51 deaths, 67 serious injuries and 1,378 slight injuries. In July 2024 the corresponding figures were: 79 deaths, 55 serious injuries and 1,229 slight injuries. Therefore, road traffic accident casualties in July 2025 decreased by 35.4% for deaths and increased by 21.8% for serious injuries and 12.1% for slight injuries.

**Graph 1: Road traffic accidents and casualties,  
January 2018 - July 2025**



Provisional data for the period August 2024 – July 2025

**Information on methodological issues:**

Sectoral Statistics Division  
Transport Statistics Section  
M. Kloumpas  
Tel: +30 213 135 3095  
e-mail: [m.kloumpas@statistics.gr](mailto:m.kloumpas@statistics.gr)

**Information for data provision:**

Tel: +30 213 135 2022, 2308, 2310  
e-mail: [data.dissem@statistics.gr](mailto:data.dissem@statistics.gr)

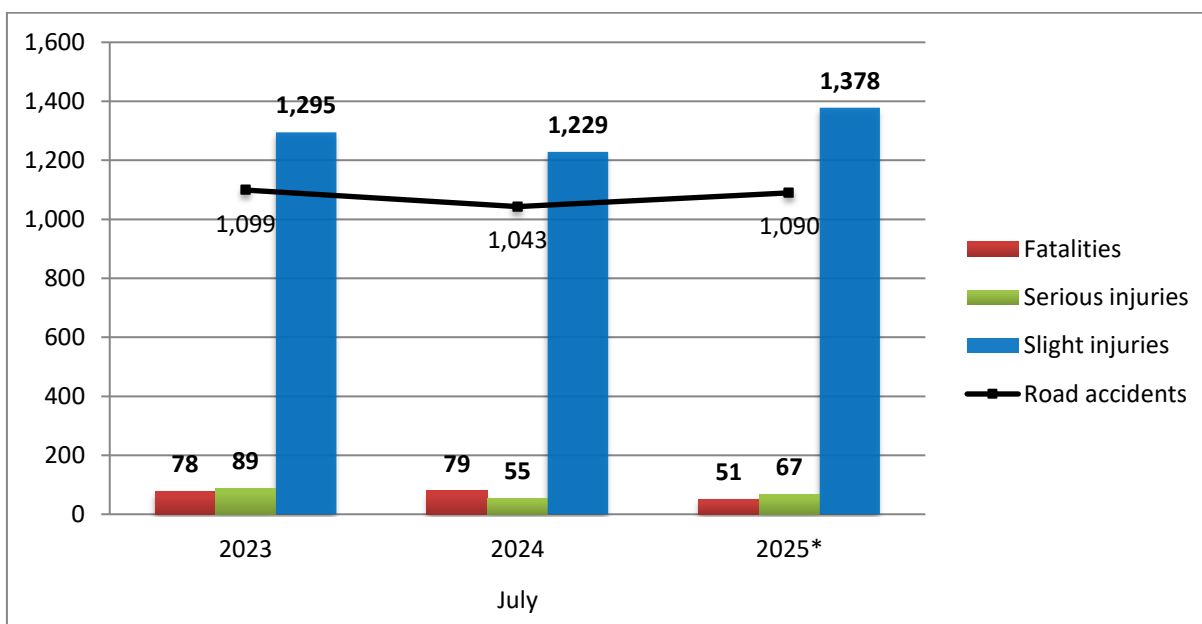
<sup>[1]</sup> Data for the reference year is provisional until the finalization of the annual data, which takes place 12 months after the end of the reference year and is published in the corresponding announcement of the following year. During these 12 months the provisional data is updated on the basis of the data of the Road Accident Forms of that year which is transmitted to ELSTAT by Police Authorities (see explanatory notes).

**Table 1: Road traffic accidents and casualties, July 2023 - 2025\***

	July				
	2023	2024	2024/2023 (%)	2025*	2025*/2024 (%)
<b>Road accidents</b>	<b>1,099</b>	<b>1,043</b>	<b>-5.1</b>	<b>1,090</b>	<b>4.5</b>
<b>Fatalities</b>	<b>78</b>	<b>79</b>	<b>1.3</b>	<b>51</b>	<b>-35.4</b>
<b>Total injuries</b>	<b>1,384</b>	<b>1,284</b>	<b>-7.2</b>	<b>1,445</b>	<b>12.5</b>
Serious injuries	89	55	-38.2	67	21.8
Slight injuries	1,295	1,229	-5.1	1,378	12.1

\* Provisional data

**Graph 2: Road traffic accidents and casualties, July 2023 - 2025\***



\* Provisional data

**Table 2: Road traffic accidents and casualties, by region and department, July 2024 and 2025\***

Region and Department	Road accidents			Fatalities			Serious injuries			Slight injuries		
	2024	2025*	%	2024	2025*	%	2024	2025*	%	2024	2025*	%
<b>Greece total</b>	<b>1,043</b>	<b>1,090</b>	<b>4.5</b>	<b>79</b>	<b>51</b>	<b>-35.4</b>	<b>55</b>	<b>67</b>	<b>21.8</b>	<b>1,229</b>	<b>1,378</b>	<b>12.1</b>
<b>Anatoliki Makedonia and Thraki (East Macedonia and Thrace)</b>	<b>35</b>	<b>28</b>	<b>-20.0</b>	<b>8</b>	<b>1</b>	<b>-87.5</b>	<b>6</b>	<b>5</b>	<b>-16.7</b>	<b>39</b>	<b>34</b>	<b>-12.8</b>
Drama	3	5	66.7	0	1		3	1		1	6	
Evros	10	11	10.0	1	0		0	0		17	16	
Kavala	11	8	-27.3	0	0		0	2		14	8	
Xanthi	8	2	-75.0	4	0		3	1		7	1	
Rodopi	3	2	-33.3	3	0		0	1		0	3	
<b>Kentriki Makedonia (Central Macedonia)</b>	<b>215</b>	<b>215</b>	<b>0.0</b>	<b>9</b>	<b>11</b>	<b>22.2</b>	<b>7</b>	<b>7</b>	<b>0.0</b>	<b>260</b>	<b>268</b>	<b>3.1</b>
Imathia	3	2	-33.3	2	0		0	0		1	2	
Thessaloniki	178	176	-1.1	3	4		4	3		220	223	
Kilkis	5	6	20.0	0	1		0	0		9	11	
Pella	4	2	-50.0	1	1		0	0		8	3	
Pieria	1	3	200.0	0	1		0	0		2	2	
Serres	8	10	25.0	1	3		3	2		6	10	
Chalkidiki	16	16	0.0	2	1		0	2		14	17	
<b>Dytiki Makedonia (West Macedonia)</b>	<b>8</b>	<b>4</b>	<b>-50.0</b>	<b>3</b>	<b>1</b>	<b>-66.7</b>	<b>0</b>	<b>1</b>	<b>-</b>	<b>8</b>	<b>7</b>	<b>-12.5</b>
Grevena	0	1	-	0	0		0	1		0	1	
Kastoria	0	1	-	0	1		0	0		0	2	
Kozani	8	2	-75.0	3	0		0	0		8	4	
Florina	0	0	-	0	0		0	0		0	0	
<b>Ipeiros (Epirus)</b>	<b>12</b>	<b>10</b>	<b>-16.7</b>	<b>2</b>	<b>1</b>	<b>-50.0</b>	<b>2</b>	<b>1</b>	<b>-50.0</b>	<b>14</b>	<b>13</b>	<b>-7.1</b>
Arta	2	1	-50.0	0	0		0	0		2	1	
Thesprotia	4	3	-25.0	0	1		1	0		3	3	
Ioannina	2	3	50.0	1	0		0	0		3	7	
Preveza	4	3	-25.0	1	0		1	1		6	2	
<b>Thessalia (Thessaly)</b>	<b>22</b>	<b>20</b>	<b>-9.1</b>	<b>5</b>	<b>3</b>	<b>-40.0</b>	<b>2</b>	<b>4</b>	<b>100.0</b>	<b>23</b>	<b>23</b>	<b>0.0</b>
Karditsa	6	7	16.7	1	2		1	0		4	11	
Larissa	8	6	-25.0	3	1		1	1		8	6	
Magnissia	6	6	0.0	0	0		0	3		9	5	
Trikala	2	1	-50.0	1	0		0	0		2	1	
<b>Ionian Islands (Ionian Islands)</b>	<b>31</b>	<b>39</b>	<b>25.8</b>	<b>3</b>	<b>3</b>	<b>0.0</b>	<b>2</b>	<b>8</b>	<b>300.0</b>	<b>40</b>	<b>42</b>	<b>5.0</b>
Zakynthos	12	7	-41.7	1	2		1	2		14	5	
Kerkyra	12	20	66.7	1	1		0	5		19	24	
Kefallinia	5	8	60.0	0	0		0	0		6	10	
Lefkada	2	4	100.0	1	0		1	1		1	3	

\* Provisional data

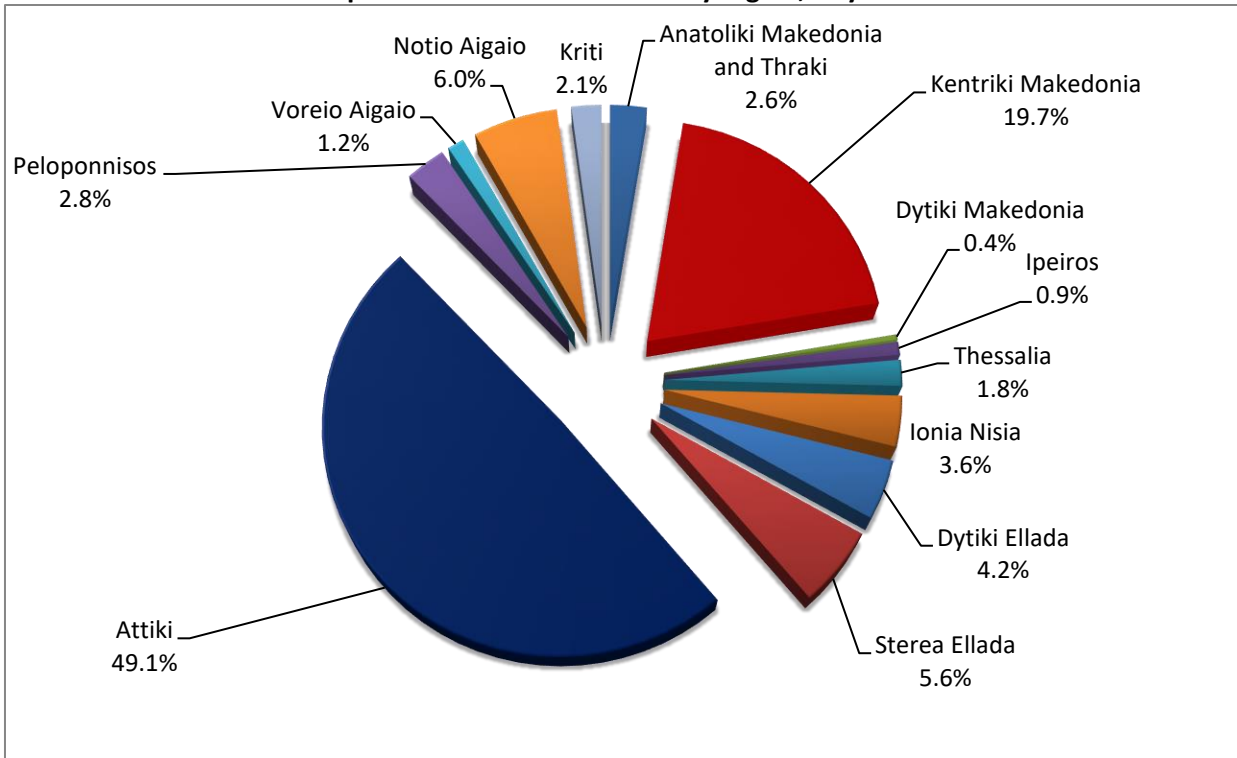
Table 2: Road traffic accidents and casualties, by region and department, July 2024 and 2025\*

(Continued)

Region and Department	Road accidents			Fatalities			Serious injuries			Slight injuries		
	2024	2025*	%	2024	2025*	%	2024	2025*	%	2024	2025*	%
<b>Dytiki Ellada (West Greece)</b>	<b>41</b>	<b>46</b>	<b>12.2</b>	<b>2</b>	<b>6</b>	<b>200.0</b>	<b>3</b>	<b>2</b>	<b>-33.3</b>	<b>45</b>	<b>55</b>	<b>22.2</b>
Etolia & Akarnania	16	18	12.5	0	4		1	0		16	21	
Achaia	15	19	26.7	0	1		0	1		20	24	
Ilia	10	9	-10.0	2	1		2	1		9	10	
<b>Stereia Ellada</b>	<b>60</b>	<b>61</b>	<b>1.7</b>	<b>4</b>	<b>3</b>	<b>-25.0</b>	<b>2</b>	<b>4</b>	<b>100.0</b>	<b>78</b>	<b>85</b>	<b>9.0</b>
Viotia	10	15	50.0	1	3		1	1		12	22	
Evia	32	26	-18.8	2	0		1	2		45	36	
Evrytania	1	2	100.0	0	0		0	1		1	2	
Fthiotida	14	13	-7.1	1	0		0	0		17	17	
Fokida	3	5	66.7	0	0		0	0		3	8	
<b>Attiki (Attica)</b>	<b>469</b>	<b>535</b>	<b>14.1</b>	<b>17</b>	<b>11</b>	<b>-35.3</b>	<b>11</b>	<b>15</b>	<b>36.4</b>	<b>544</b>	<b>695</b>	<b>27.8</b>
<b>Peloponnisos (Peloponnese)</b>	<b>29</b>	<b>31</b>	<b>6.9</b>	<b>9</b>	<b>6</b>	<b>-33.3</b>	<b>3</b>	<b>4</b>	<b>33.3</b>	<b>35</b>	<b>38</b>	<b>8.6</b>
Argolida	6	2	-66.7	2	3		2	1		2	0	
Arkadia	3	0	-100.0	0	0		0	0		3	0	
Korinthia	12	14	16.7	2	2		0	0		16	19	
Lakonia	2	7	250.0	0	1		0	2		4	10	
Messinia	6	8	33.3	5	0		1	1		10	9	
<b>Voreio Aigaio (North Aegean)</b>	<b>27</b>	<b>13</b>	<b>-51.9</b>	<b>2</b>	<b>0</b>	<b>-100.0</b>	<b>4</b>	<b>0</b>	<b>-100.0</b>	<b>27</b>	<b>14</b>	<b>-48.1</b>
Lesvos	13	3	-76.9	1	0		1	0		16	4	
Samos	10	5	-50.0	0	0		2	0		9	5	
Chios	4	5	25.0	1	0		1	0		2	5	
<b>Notio Aigaio (South Aegean)</b>	<b>72</b>	<b>65</b>	<b>-9.7</b>	<b>8</b>	<b>2</b>	<b>-75.0</b>	<b>10</b>	<b>9</b>	<b>-10.0</b>	<b>93</b>	<b>78</b>	<b>-16.1</b>
Dodekanissos	35	28	-20.0	4	1		7	3		38	31	
Kyklades	37	37	0.0	4	1		3	6		55	47	
<b>Kriti (Crete)</b>	<b>22</b>	<b>23</b>	<b>4.5</b>	<b>7</b>	<b>3</b>	<b>-57.1</b>	<b>3</b>	<b>7</b>	<b>133.3</b>	<b>23</b>	<b>26</b>	<b>13.0</b>
Iraklio	9	8	-11.1	2	0		2	2		7	9	
Lassithi	3	2	-33.3	1	0		0	0		5	2	
Rethymno	1	3	200.0	0	0		0	1		2	3	
Chania	9	10	11.1	4	3		1	4		9	12	

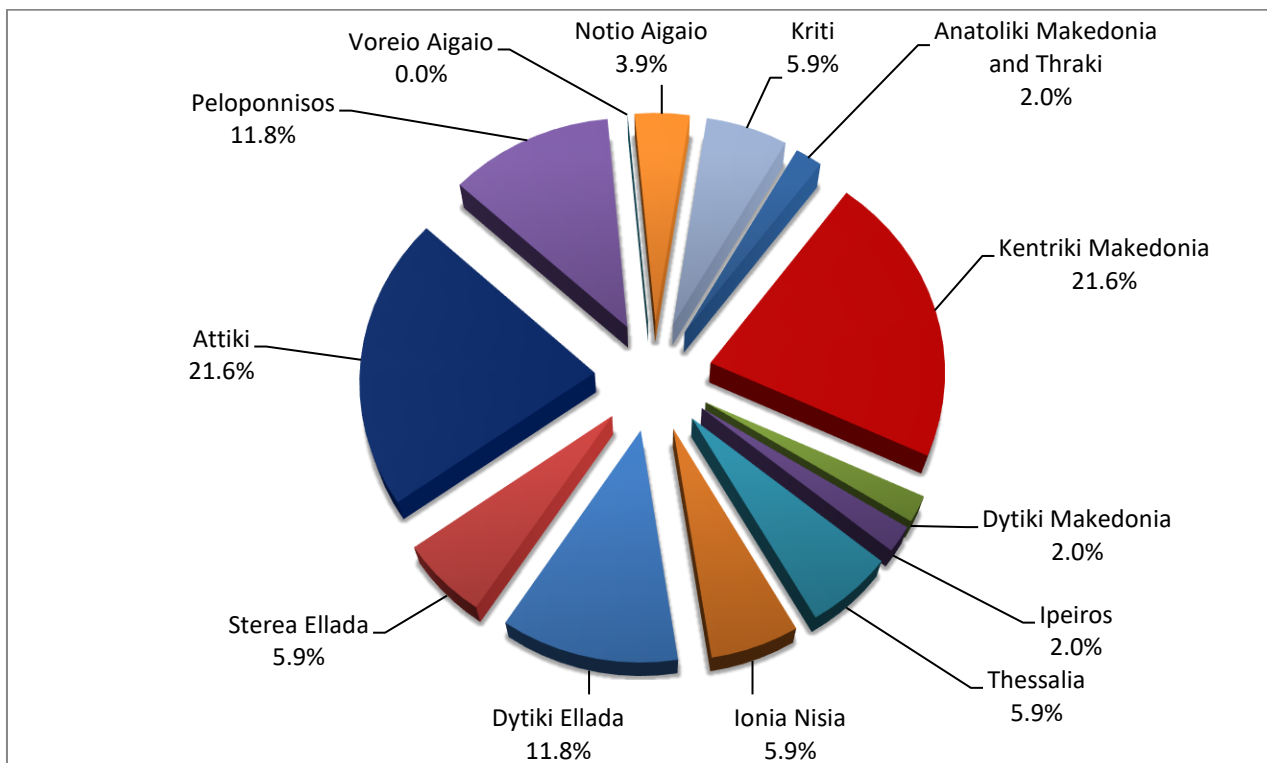
\* Provisional data

**Graph 3: Road traffic accidents by region, July 2025 \***



\* Provisional data

**Graph 4: Fatalities by region, July 2025 \***

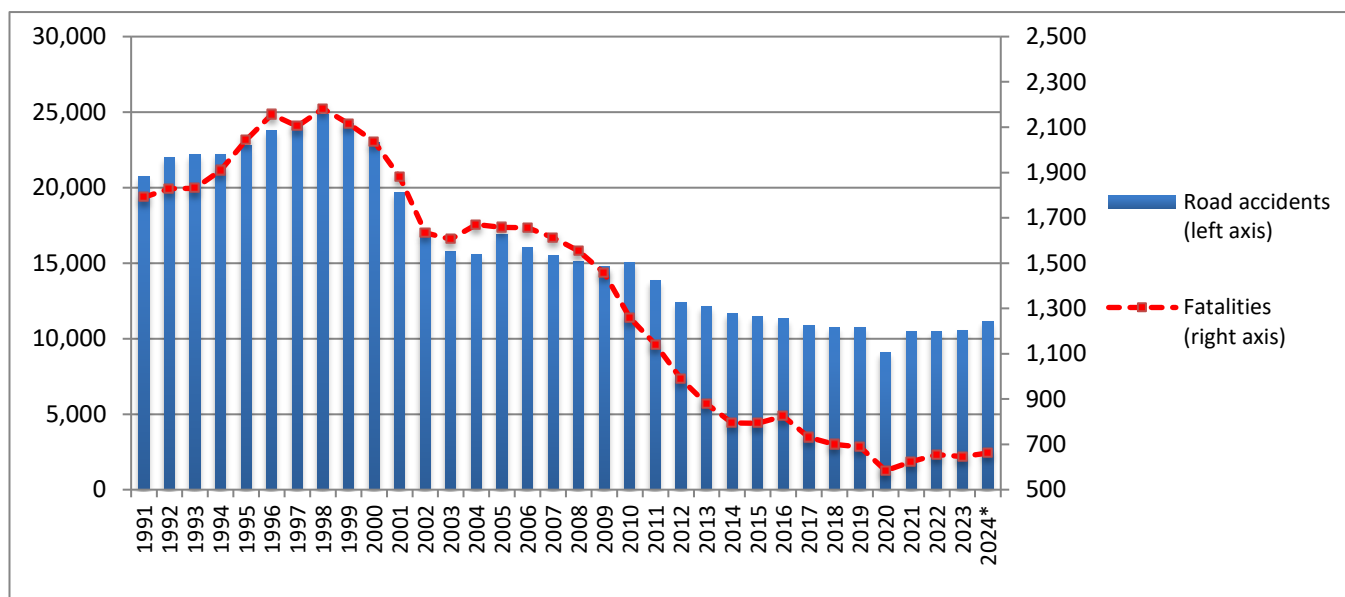


\* Provisional data

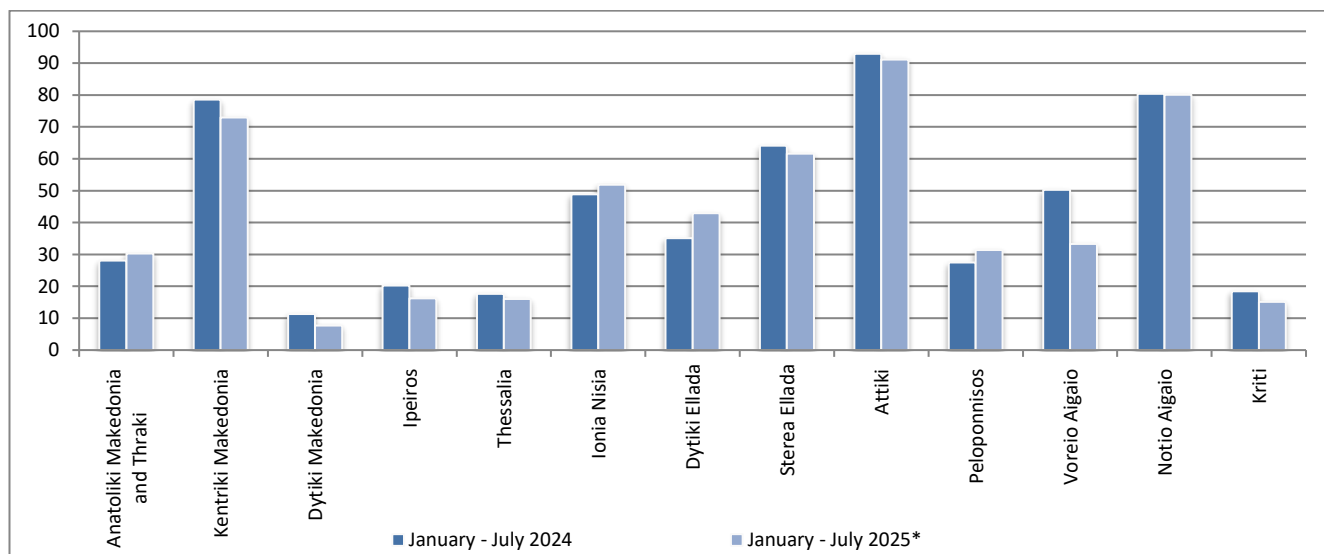
**Table 3: Road traffic accidents and casualties for the period January - July 2023,2024 and 2025\***

	2023		2024		2025*
	January - July	Total year	January - July	Total year*	January - July
<b>Road Accidents</b>	6,130	<b>10,553</b>	6,559	<b>11,138</b>	6,375
<i>Annual Change (%)</i>			7.0	5.5	-2.8
<b>Fatalities</b>	375	<b>646</b>	363	<b>662</b>	299
<i>Annual Change (%)</i>			-3.2	2.5	-17.6
<b>Serious injuries</b>	362	<b>659</b>	336	<b>566</b>	312
<i>Annual Change (%)</i>			-7.2	-14.1	-7.1
<b>Slight injuries</b>	6,975	<b>12,156</b>	7,596	<b>12,802</b>	7,411
<i>Annual Change (%)</i>			8.9	5.3	-2.4

**Graph 5: Total road traffic accidents and fatalities, 1991-2024\***

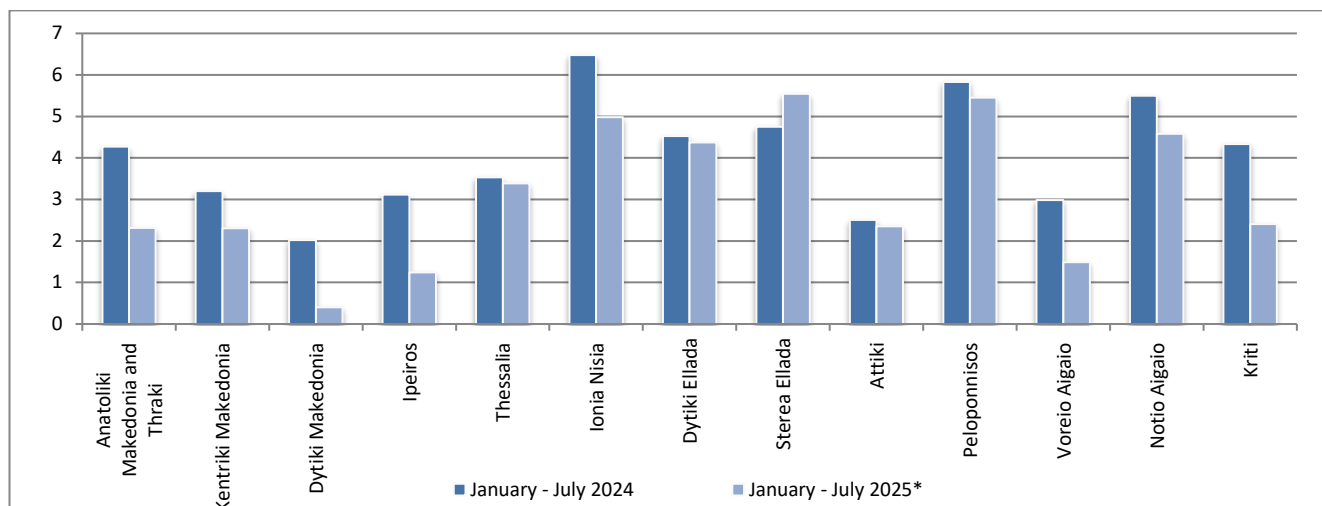


**Graph 6: Road traffic accidents per 100,000 inhabitants, for the period January - July 2024 and 2025\***

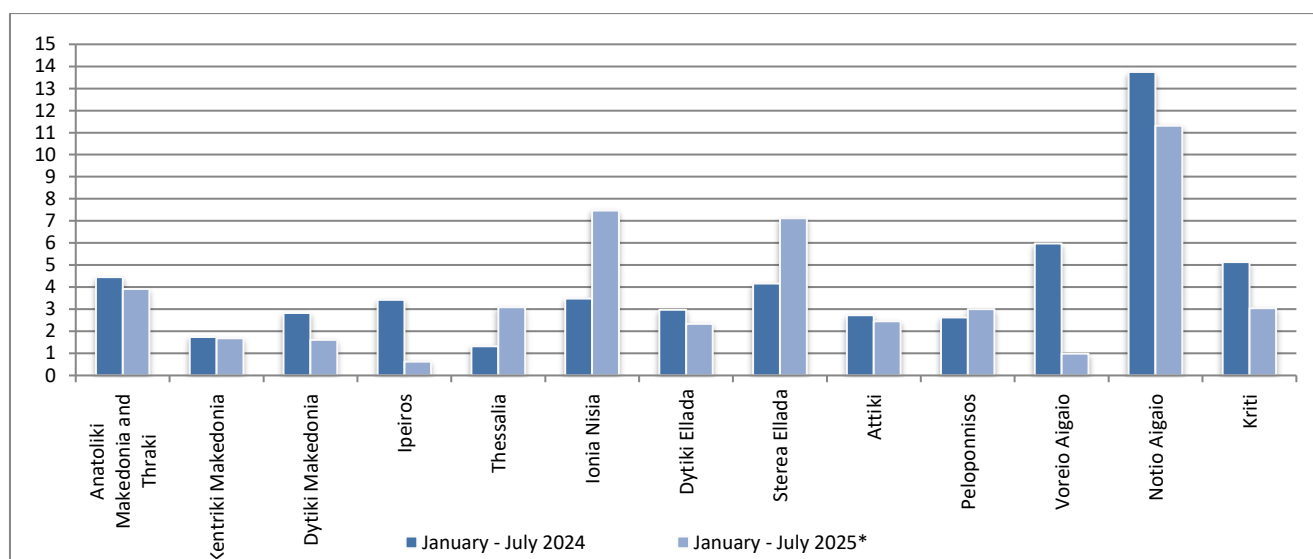


\* Provisional data

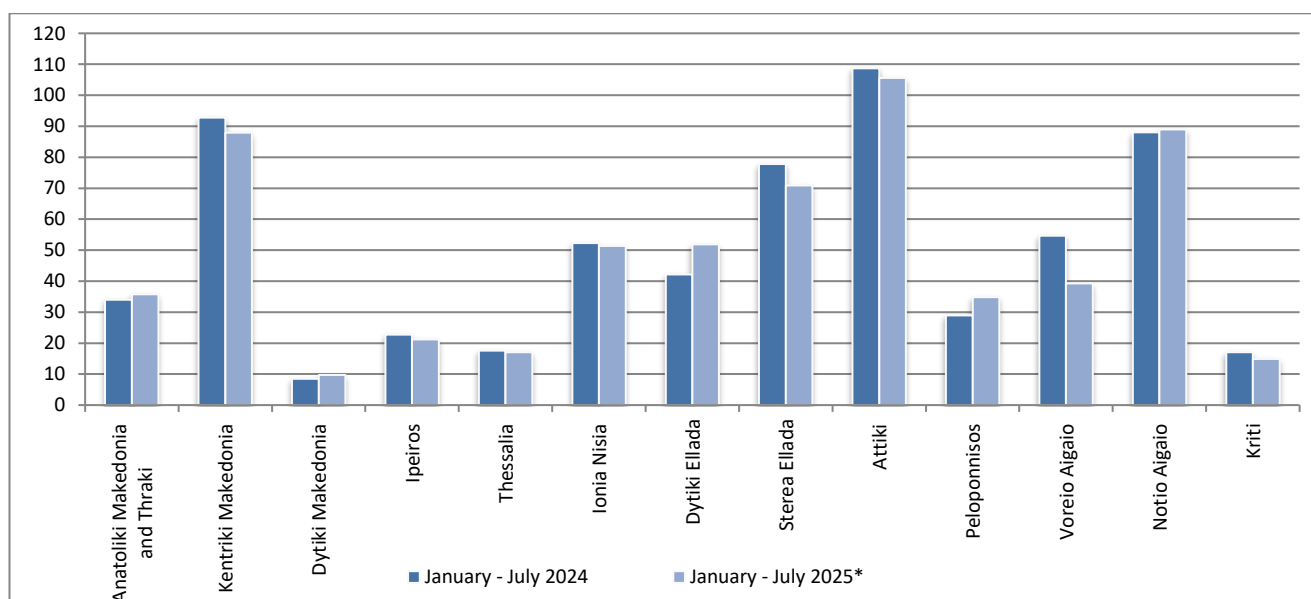
**Graph 7: Fatalities per 100,000 inhabitants, for the period January - July 2024 and 2025\***



**Graph 8: Serious injuries per 100,000 inhabitants, for the period January - July 2024 and 2025\***



**Graph 9: Slight injuries per 100,000 inhabitants, for the period January - July 2024 and 2025\***



\* Provisional data

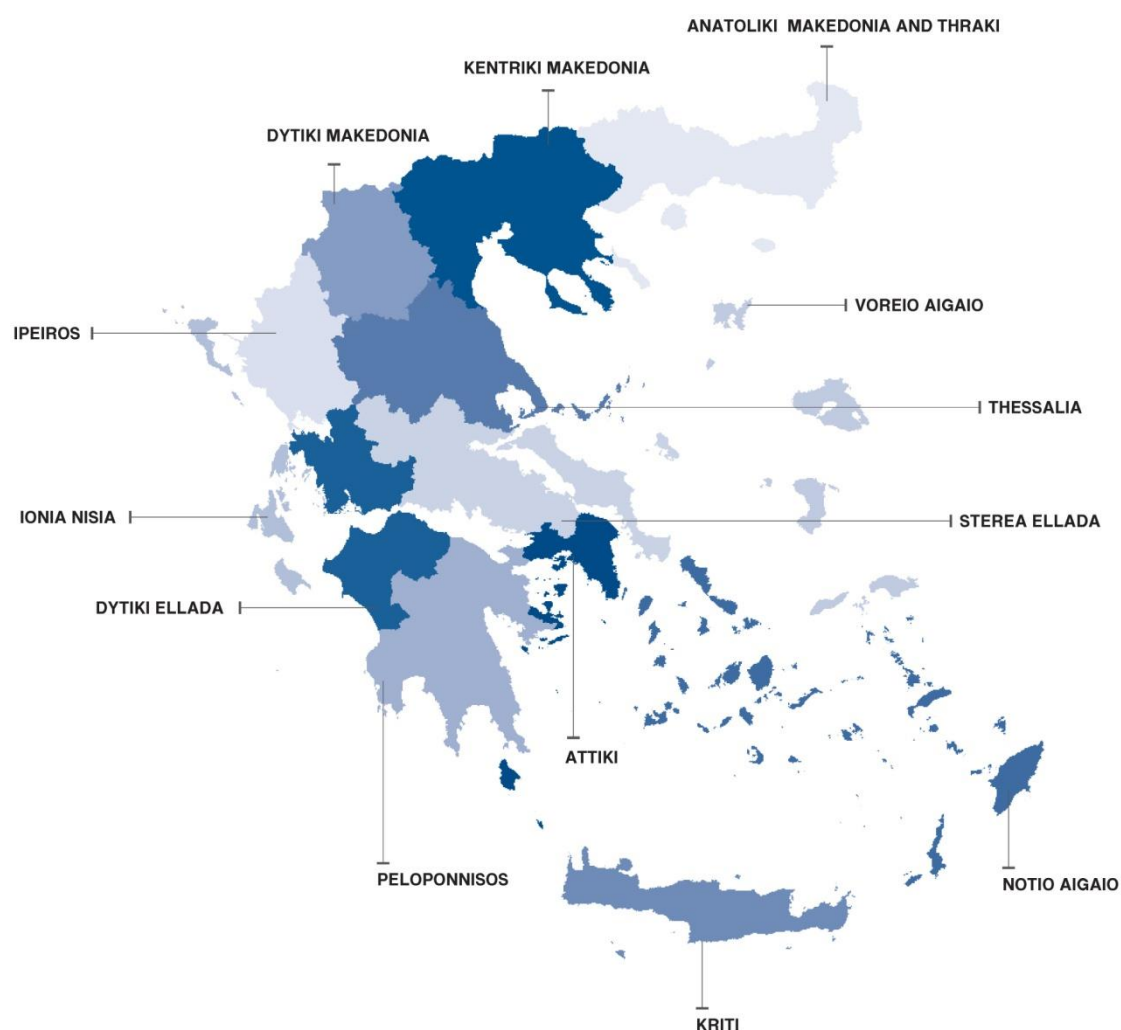
## EXPLANATORY NOTES

### Survey on Road Traffic Accidents

The Survey on Road Traffic Accidents is conducted on a monthly basis and it records, for each region (see map) and department of Greece and for each month separately, the number of accidents resulting in death or injury, as well as the number of persons injured by categories (drivers, passengers, pedestrians).

On a yearly basis, road traffic accidents are further analyzed. The competent agencies for filling in/collecting the forms on road accidents are the local Police Authorities and the local Port Authorities of Greece.

The lower level of analysis for the place where an injury road accident occurred is the settlement. Data are collected on a monthly basis. The main variables are the following: place of accident, kind of road, casualties, conditions of road surface and type of road.



### Legal basis

The Survey on Road Traffic Accidents is governed by Council Decision 93/704 of the European Community.

### Reference period

Monthly.

### Availability of data

Provisional data are available 2 months after the reference month.  
Final data are available 14 months after the reference year.



**Definitions** **Road accident** (injury accident): Any accident involving at least one road motor vehicle in motion on a public road or square to which the public has access (excluding yards, industrial sites or vehicle depot of public transport enterprises), resulting in at least one injured or killed person. Accidents with only material damages are not included.

**Fatality (Death):** Any person killed immediately or dying within 30 days as a result of an injury accident (This national definition applies since 01.01.1996)

**Person injured:** Any person who sustained an injury as result of an injury accident, and who normally needs medical treatment.

**Serious injury:** Any person who sustained an injury as result of an injury accident, such as brain damages, mutilation, multiple injuries, which may result in lack of awareness or which are life-threatening.

**Slight injury:** Any person injured who sustained minor and not life-threatening injuries.

**Vehicle:** Include motor vehicles, trolleybuses, motorcycles, bicycles, motorbikes, agricultural and road making machines, animal and hand-drawn vehicles. Railway vehicles are excluded, unless the road accident involves at least one of the aforementioned types of vehicles and therefore, railway vehicles are considered vehicles.

**Methodology** The forms of the survey are filled in by the local Police Authorities and the local Port Authorities as well.

**References** More information about Road Traffic Accidents is available on ELSTAT's website and more specifically at the link: <https://www.statistics.gr/en/statistics/-/publication/SDT03/>.