

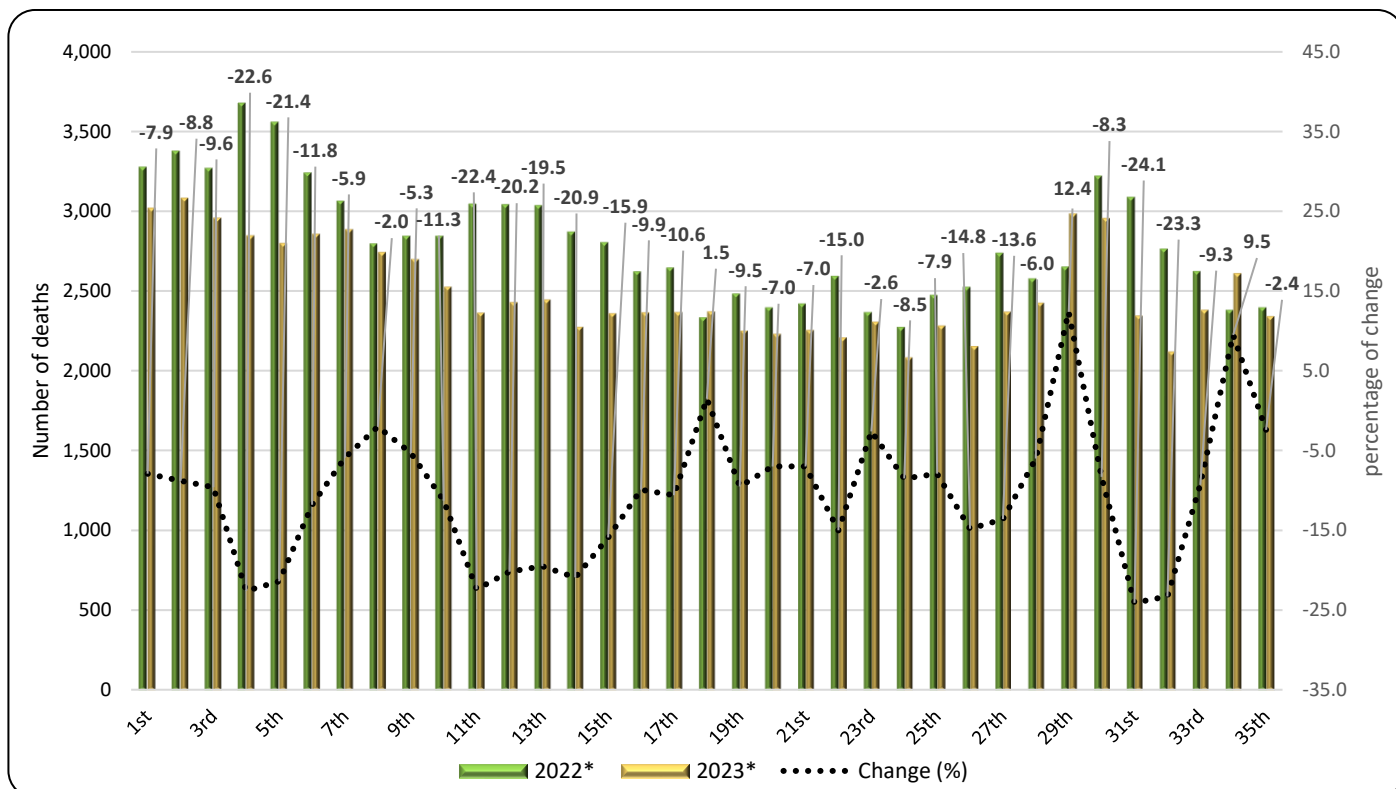


### DATA ON WEEKLY DEATHS: Period 1<sup>st</sup> to 35<sup>th</sup> week, 2023

The Hellenic Statistical Authority (ELSTAT) announces the provisional statistical data depicting the weekly evolution of death counts for the period from the first (1<sup>st</sup>) to the thirty-fifth (35<sup>th</sup>) week of 2023 (2/1/2023 – 3/9/2023). Data refer to the deaths that occurred in the Greek territory during that period due to various causes including deaths attributed to Covid-19.

The data included in this publication are compiled within the framework of the Vital Statistics Survey, are drawn from civil registry acts as submitted by Municipal Authorities and refer to vital events declared and registered until the date of data transmission. Overdue registrations of deaths are integrated at a later stage in the date of occurrence. According to these data, **the number of deaths in Greece during the first thirty-five (35) weeks of 2023 (2/1/2023 – 3/9/2023) amounted to 87,663** (44,203 men and 43,460 women), **whereas during the corresponding period of 2022 (3/1/2022 – 4/9/2022) had amounted to 98,373** (49,281 men and 49,092 women) recording a decrease of 10,710 deaths (-10.9%). A decrease of 1,180 deaths (-1.3%) is recorded compared to the first thirty-five (35) week cumulative average of the six-year period 2017 – 2022 (88,843 deaths). The corresponding annual rates of change for the period 2017 - 2022 amount to 3.6% in 2022 compared to 2021 (94,930), 10.2% in 2021 compared to 2020 (86,105), -0.3% in 2020 compared to 2019 (86,322), 6.7% in 2019 compared to 2018 (80,930) and -6.3% in 2018 compared to 2017 (86,398) (Tables 1, 2, 3 and 4).

**Graph 1. Weekly evolution of deaths for the weeks 1<sup>st</sup> – 35<sup>th</sup>, 2022 and 2023**



\*Provisional data

**Information on methodological issues:**

Population, Employment and Cost of Living Statistics Division  
Population and Migration Statistics Section  
Thymoglou Georgia, tel: +30 213 135 2175, e-mail: [g.thymoglou@statistics.gr](mailto:g.thymoglou@statistics.gr)  
Christou Christos, tel: +30 213 135 2884, e-mail: [c.christou@statistics.gr](mailto:c.christou@statistics.gr)

**Information on data provision:**

tel: +30 213 135 2022, 2308, 2310  
e-mail: [data.dissem@statistics.gr](mailto:data.dissem@statistics.gr)

**Table 1. Weekly evolution of deaths, 2022 and 2023**

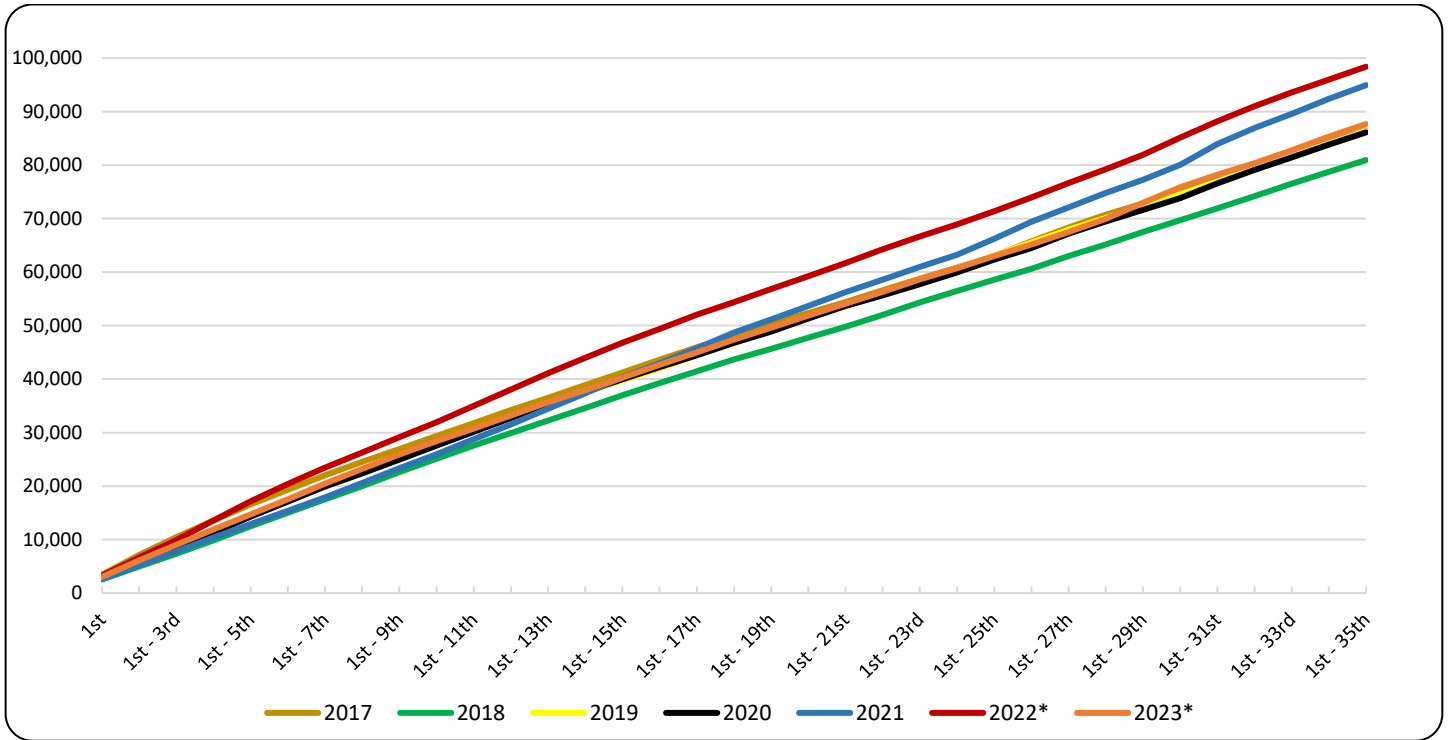
Week	2022*	2023*	Change (%)
1 <sup>st</sup>	3,278	3,018	-7.9
2 <sup>nd</sup>	3,378	3,080	-8.8
3 <sup>rd</sup>	3,269	2,956	-9.6
4 <sup>th</sup>	3,677	2,847	-22.6
5 <sup>th</sup>	3,558	2,797	-21.4
6 <sup>th</sup>	3,241	2,857	-11.8
7 <sup>th</sup>	3,065	2,884	-5.9
8 <sup>th</sup>	2,797	2,742	-2.0
9 <sup>th</sup>	2,847	2,697	-5.3
10 <sup>th</sup>	2,846	2,525	-11.3
11 <sup>th</sup>	3,046	2,363	-22.4
12 <sup>th</sup>	3,042	2,428	-20.2
13 <sup>th</sup>	3,037	2,444	-19.5
14 <sup>th</sup>	2,872	2,273	-20.9
15 <sup>th</sup>	2,806	2,359	-15.9
16 <sup>th</sup>	2,624	2,364	-9.9
17 <sup>th</sup>	2,647	2,366	-10.6
18 <sup>th</sup>	2,336	2,371	1.5
19 <sup>th</sup>	2,485	2,250	-9.5
20 <sup>th</sup>	2,398	2,230	-7.0
21 <sup>st</sup>	2,423	2,254	-7.0
22 <sup>nd</sup>	2,596	2,207	-15.0
23 <sup>rd</sup>	2,369	2,307	-2.6
24 <sup>th</sup>	2,276	2,083	-8.5
25 <sup>th</sup>	2,477	2,281	-7.9
26 <sup>th</sup>	2,526	2,153	-14.8
27 <sup>th</sup>	2,740	2,368	-13.6
28 <sup>th</sup>	2,580	2,424	-6.0
29 <sup>th</sup>	2,654	2,983	12.4
30 <sup>th</sup>	3,222	2,955	-8.3
31 <sup>st</sup>	3,088	2,345	-24.1
32 <sup>nd</sup>	2,765	2,120	-23.3
33 <sup>rd</sup>	2,626	2,381	-9.3
34 <sup>th</sup>	2,383	2,610	9.5
35 <sup>th</sup>	2,399	2,341	-2.4
<b>Total</b>	<b>98,373</b>	<b>87,663</b>	<b>-10.9</b>

\*Provisional data

According to the above data, for the first thirty-five (35) weeks of 2023 compared to the corresponding period of 2022, a decrease of deaths is observed for all weeks, except from the 29<sup>th</sup> (17/7/2023 - 23/7/2023), the 34<sup>th</sup> (21/8/2023 - 27/8/2023) and the 18<sup>th</sup> (1/5/2023 - 7/5/2023) week, which show an increase of 12.4%, 9.5% and 1.5% respectively. The highest percentage decreases of deaths are observed for the 31<sup>st</sup> (31/7/2023 - 6/8/2023), the 32<sup>nd</sup> (7/8/2023 - 13/8/2023) and the 4<sup>th</sup> (23/1/2023 - 29/1/2023) week by 24.1%, 23.3% and 22.6% respectively.

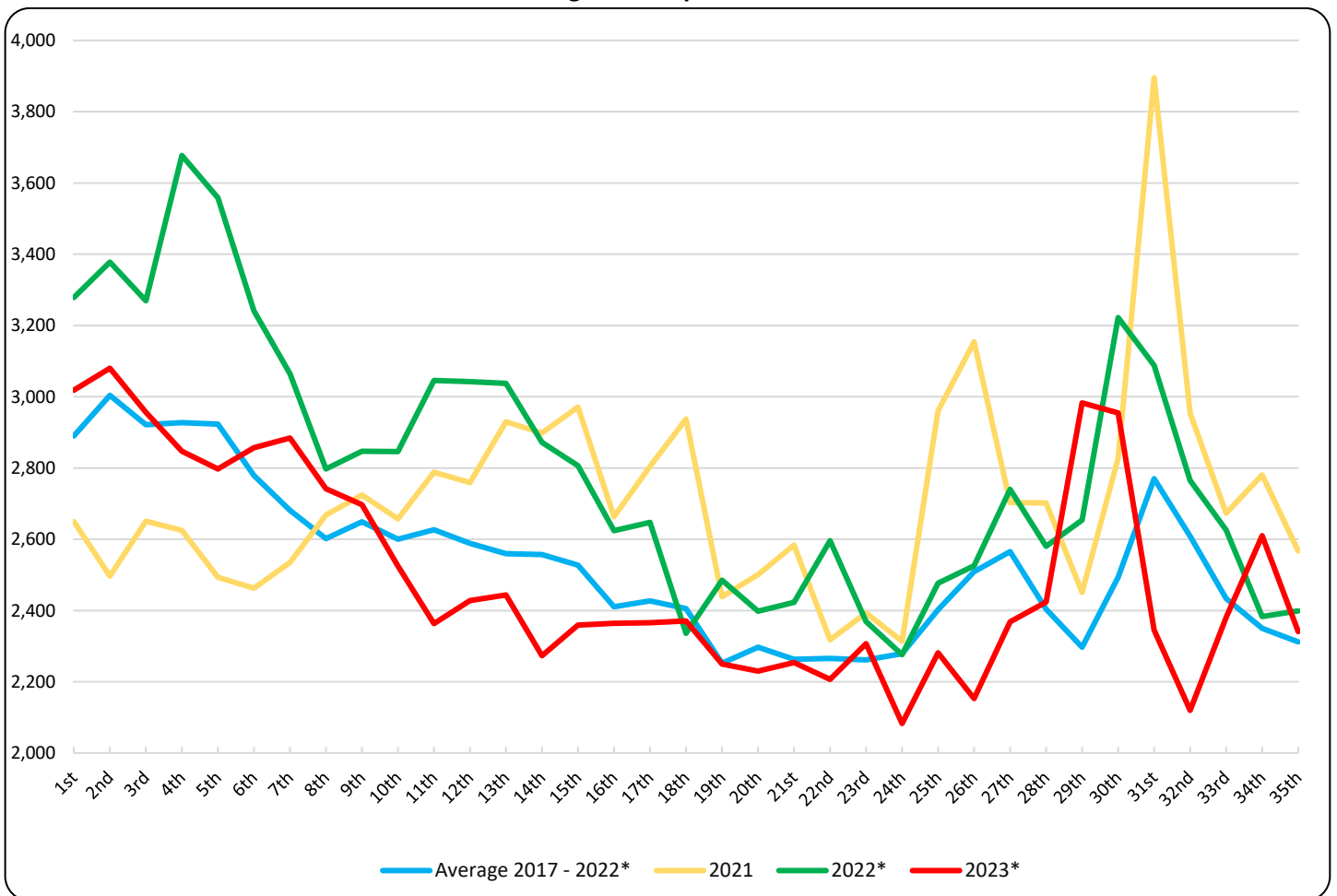
It should be noted that data are updated after integration of more recent data or upon revision of already transmitted data by the Registry Offices. Consequently, data may differ from those already announced in previous publications.

**Graph 2. Deaths for the weeks 1<sup>st</sup> – 35<sup>th</sup>, 2017 - 2023 (cumulative)**



\*Provisional data

**Graph 3. Deaths by week for the weeks 1<sup>st</sup> – 35<sup>th</sup>, 2021, 2022, 2023 and Average for the period 2017-2022**



\*Provisional data

**Table 2. Deaths for the weeks 1<sup>st</sup> – 35<sup>th</sup>, 2017 - 2023 (cumulative)**

<b>Week</b>	<b>2017</b>	<b>2018</b>	<b>2019</b>	<b>2020</b>	<b>2021</b>	<b>2022*</b>	<b>2023*</b>	<b>Average 2017 - 2022*</b>
1st	3,425	2,533	2,706	2,749	2,650	3,278	3,018	2,890
1st - 2nd	7,105	4,986	5,811	5,659	5,147	6,656	6,098	5,894
1st - 3rd	10,469	7,331	8,850	8,522	7,798	9,925	9,054	8,816
1st - 4th	13,551	9,879	11,710	11,294	10,423	13,602	11,901	11,743
1st - 5th	16,553	12,484	14,603	14,284	12,916	17,160	14,698	14,667
1st - 6th	19,343	15,041	17,375	17,133	15,379	20,401	17,555	17,445
1st - 7th	22,018	17,510	19,938	19,915	17,914	23,466	20,439	20,127
1st - 8th	24,541	20,003	22,598	22,385	20,582	26,263	23,181	22,729
1st - 9th	26,940	22,613	25,367	24,928	23,306	29,110	25,878	25,377
1st - 10th	29,345	25,145	27,886	27,572	25,963	31,956	28,403	27,978
1st - 11th	31,789	27,560	30,356	30,168	28,751	35,002	30,766	30,604
1st - 12th	34,247	29,890	32,747	32,718	31,510	38,044	33,194	33,193
1st - 13th	36,500	32,255	35,079	35,157	34,440	41,081	35,638	35,752
1st - 14th	38,863	34,596	37,492	37,611	37,338	43,953	37,911	38,309
1st - 15th	41,226	36,945	39,804	39,973	40,309	46,759	40,270	40,836
1st - 16th	43,593	39,264	42,024	42,241	42,972	49,383	42,634	43,246
1st - 17th	45,918	41,439	44,427	44,446	45,777	52,030	45,000	45,673
1st - 18th	48,183	43,665	46,787	46,753	48,714	54,366	47,371	48,078
1st - 19th	50,342	45,645	49,110	48,880	51,153	56,851	49,621	50,330
1st - 20th	52,372	47,757	51,378	51,352	53,654	59,249	51,851	52,627
1st - 21st	54,385	49,778	53,588	53,681	56,238	61,672	54,105	54,890
1st - 22nd	56,597	52,001	55,869	55,644	58,556	64,268	56,312	57,156
1st - 23rd	58,718	54,303	58,154	57,745	60,949	66,637	58,619	59,418
1st - 24th	60,854	56,491	60,700	59,956	63,263	68,913	60,702	61,696
1st - 25th	63,024	58,571	63,076	62,308	66,223	71,390	62,983	64,099
1st - 26th	65,756	60,616	65,495	64,488	69,377	73,916	65,136	66,608
1st - 27th	68,298	62,977	67,872	67,158	72,080	76,656	67,504	69,174
1st - 28th	70,716	65,137	70,130	69,462	74,782	79,236	69,928	71,577
1st - 29th	72,806	67,493	72,227	71,598	77,233	81,890	72,911	73,875
1st - 30th	74,949	69,688	74,564	73,835	80,060	85,112	75,866	76,368
1st - 31st	77,256	71,919	76,950	76,549	83,955	88,200	78,211	79,138
1st - 32nd	79,982	74,207	79,341	79,078	86,909	90,965	80,331	81,747
1st - 33rd	82,270	76,492	81,702	81,446	89,582	93,591	82,712	84,181
1st - 34th	84,322	78,752	83,966	83,807	92,363	95,974	85,322	86,531
1st - 35th	86,398	80,930	86,322	86,105	94,930	98,373	87,663	88,843
<b>Change (%)</b>		<b>-6.3</b>	<b>6.7</b>	<b>-0.3</b>	<b>10.2</b>	<b>3.6</b>	<b>-10.9</b>	

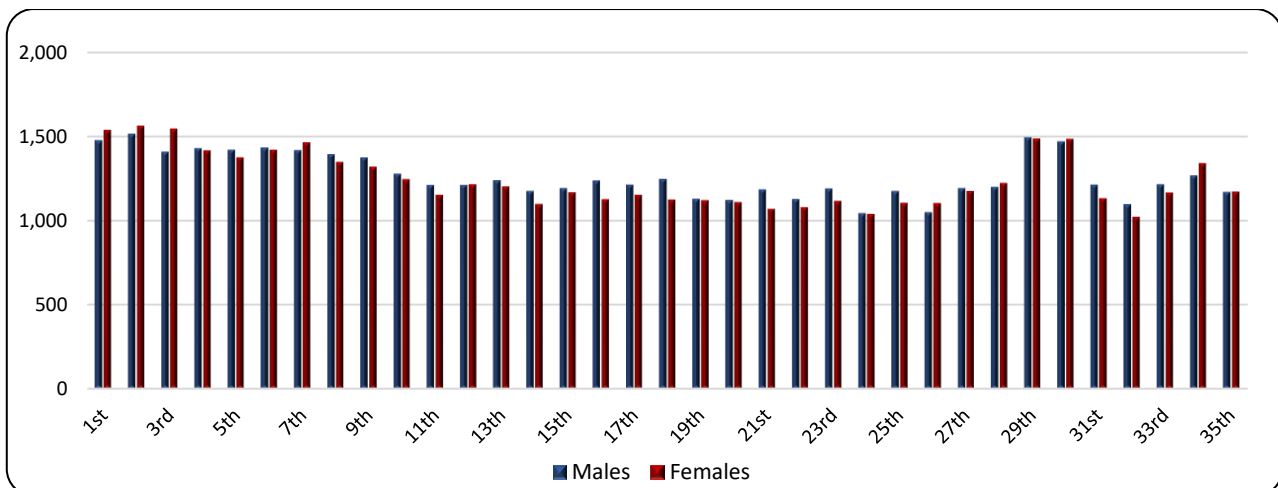
\*Provisional data

**Table 3. Weekly evolution of deaths by sex, for the weeks 1<sup>st</sup> – 35<sup>th</sup>, 2023\***

Week	Total	Males	Females
1 <sup>st</sup>	3,018	1,478	1,540
2 <sup>nd</sup>	3,080	1,515	1,565
3 <sup>rd</sup>	2,956	1,409	1,547
4 <sup>th</sup>	2,847	1,429	1,418
5 <sup>th</sup>	2,797	1,421	1,376
6 <sup>th</sup>	2,857	1,434	1,423
7 <sup>th</sup>	2,884	1,418	1,466
8 <sup>th</sup>	2,742	1,393	1,349
9 <sup>th</sup>	2,697	1,375	1,322
10 <sup>th</sup>	2,525	1,278	1,247
11 <sup>th</sup>	2,363	1,210	1,153
12 <sup>th</sup>	2,428	1,211	1,217
13 <sup>th</sup>	2,444	1,240	1,204
14 <sup>th</sup>	2,273	1,174	1,099
15 <sup>th</sup>	2,359	1,191	1,168
16 <sup>th</sup>	2,364	1,237	1,127
17 <sup>th</sup>	2,366	1,213	1,153
18 <sup>th</sup>	2,371	1,246	1,125
19 <sup>th</sup>	2,250	1,128	1,122
20 <sup>th</sup>	2,230	1,121	1,109
21 <sup>st</sup>	2,254	1,184	1,070
22 <sup>nd</sup>	2,207	1,127	1,080
23 <sup>rd</sup>	2,307	1,190	1,117
24 <sup>th</sup>	2,083	1,043	1,040
25 <sup>th</sup>	2,281	1,175	1,106
26 <sup>th</sup>	2,153	1,049	1,104
27 <sup>th</sup>	2,368	1,191	1,177
28 <sup>th</sup>	2,424	1,199	1,225
29 <sup>th</sup>	2,983	1,494	1,489
30 <sup>th</sup>	2,955	1,469	1,486
31 <sup>st</sup>	2,345	1,213	1,132
32 <sup>nd</sup>	2,120	1,097	1,023
33 <sup>rd</sup>	2,381	1,215	1,166
34 <sup>th</sup>	2,610	1,267	1,343
35 <sup>th</sup>	2,341	1,169	1,172
<b>Total</b>	<b>87,663</b>	<b>44,203</b>	<b>43,460</b>

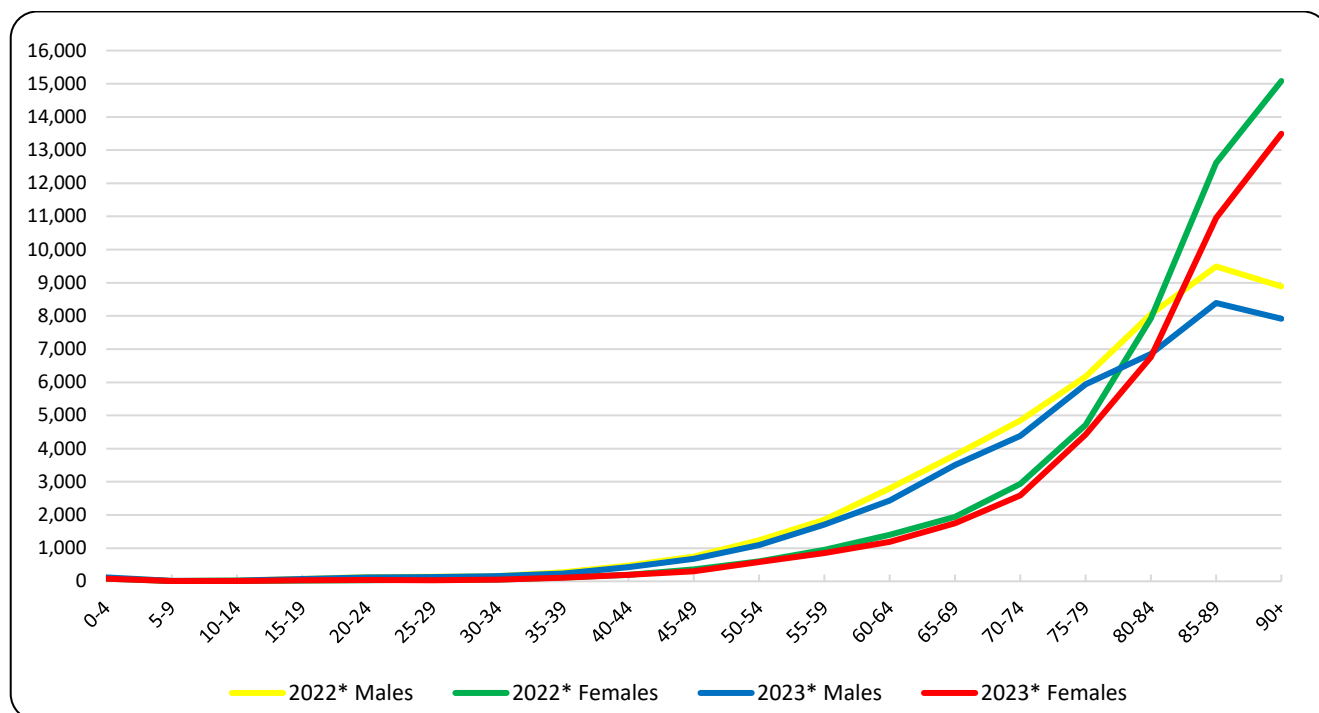
\*Provisional data

**Graph 4. Weekly evolution of deaths by sex, for the weeks 1<sup>st</sup> – 35<sup>th</sup>, 2023\***



\*Provisional data

**Graph 5. Deaths by age group and sex, 1<sup>st</sup> – 35<sup>th</sup> week, 2022 and 2023**



\*Provisional data

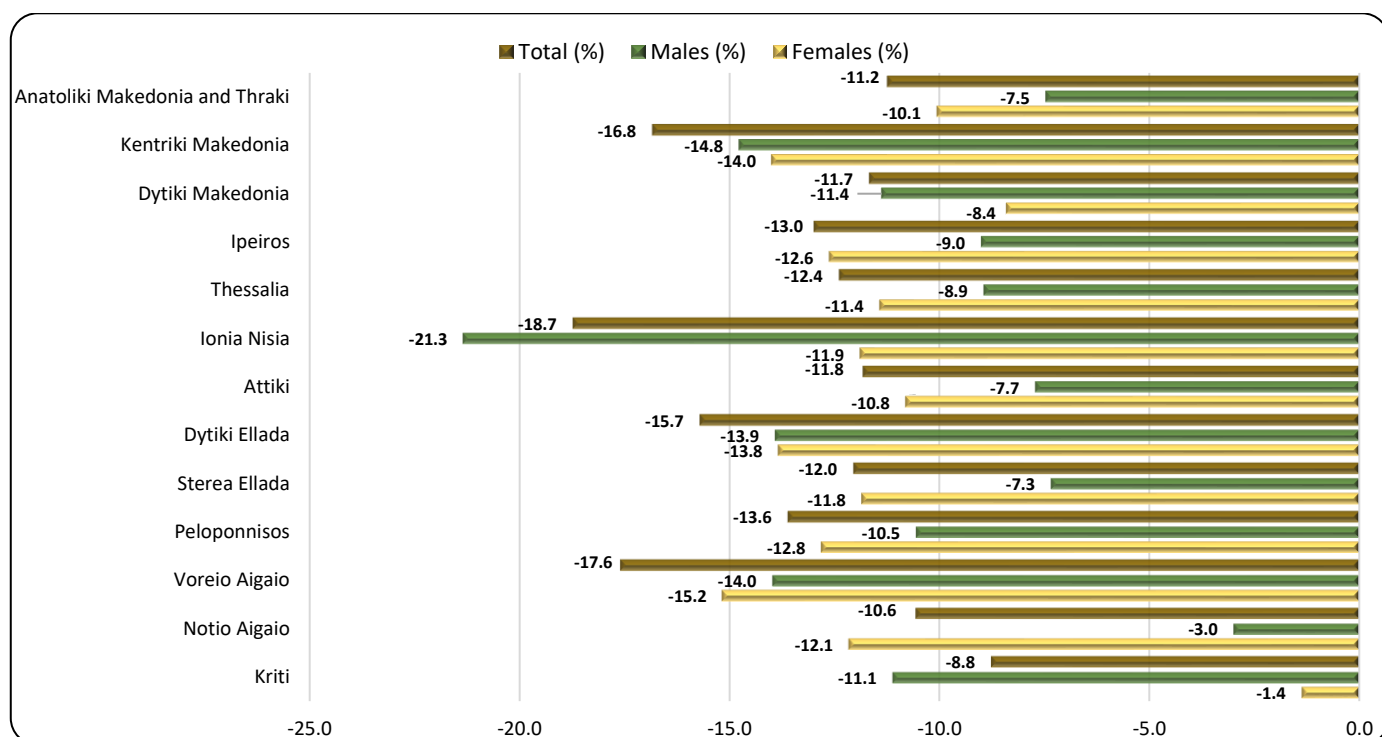
**Table 4. Deaths by age group and sex, weeks 1<sup>st</sup> – 35<sup>th</sup>, 2022 and 2023**

Age Group	2022*			2023*		
	Total	Males	Females	Total	Males	Females
0 - 4	173	96	77	201	116	85
5 - 9	22	11	11	23	14	9
10 - 14	30	18	12	29	20	9
15 - 19	92	68	24	106	69	37
20 - 24	159	131	28	159	119	40
25 - 29	186	137	49	160	124	36
30 - 34	211	160	51	214	161	53
35 - 39	391	274	117	349	236	113
40 - 44	668	475	193	618	425	193
45 - 49	1,103	746	357	982	679	303
50 - 54	1,839	1,238	601	1,682	1,096	586
55 - 59	2,804	1,853	951	2,563	1,714	849
60 - 64	4,208	2,805	1,403	3,627	2,438	1,189
65 - 69	5,750	3,808	1,942	5,255	3,506	1,749
70 - 74	7,783	4,843	2,940	6,968	4,380	2,588
75 - 79	10,883	6,172	4,711	10,357	5,938	4,419
80 - 84	15,973	8,050	7,923	13,608	6,854	6,754
85 - 89	22,110	9,491	12,619	19,346	8,391	10,955
90+	23,971	8,889	15,082	21,407	7,915	13,492
Unknown	17	16	1	9	8	1
<b>Total</b>	<b>98,373</b>	<b>49,281</b>	<b>49,092</b>	<b>87,663</b>	<b>44,203</b>	<b>43,460</b>

\*Provisional data

As regards the breakdown of data by age, during the first thirty-five (35) weeks of 2023 compared to the corresponding period of 2022, a decrease of deaths is observed for most age groups, with the highest decreases, in absolute figures, being observed for the age groups 85 to 89 (-2,764 deaths), over 90 (-2,564 deaths) and 80 to 84 (-2,365 deaths) (Table 4).

**Graph 6. Annual change of deaths 2023\*/2022\* (%) by sex and Region of usual residence, weeks 1<sup>st</sup> – 35<sup>th</sup>**



\*Provisional data

**Table 5. Annual change of deaths 2023/2022 (%) by sex and Region of usual residence, weeks 1<sup>st</sup> – 35<sup>th</sup>**

Region	2022*			2023*			Change (%)		
	Total	Males	Females	Total	Males	Females	Total	Males	Females
Anatoliki Makedonia and Thraki	5,763	2,838	2,925	5,115	2,626	2,631	-11.2	-7.5	-10.1
Kentriki Makedonia	17,392	8,716	8,676	14,464	7,429	7,463	-16.8	-14.8	-14.0
Dytiki Makedonia	2,665	1,380	1,285	2,354	1,223	1,177	-11.7	-11.4	-8.4
Ipeiros	3,163	1,577	1,586	2,752	1,435	1,386	-13.0	-9.0	-12.6
Thessalia	7,005	3,589	3,416	6,137	3,268	3,026	-12.4	-8.9	-11.4
Ionia Nisia	2,093	1,083	1,010	1,701	852	890	-18.7	-21.3	-11.9
Attiki	33,329	16,303	17,026	29,388	15,045	15,188	-11.8	-7.7	-10.8
Dytiki Ellada	6,483	3,250	3,233	5,465	2,798	2,786	-15.7	-13.9	-13.8
Sterea Ellada	5,346	2,711	2,635	4,702	2,512	2,323	-12.0	-7.3	-11.8
Peloponnisos	6,026	3,081	2,945	5,206	2,756	2,568	-13.6	-10.5	-12.8
Voreio Aigaio	1,813	909	904	1,494	782	767	-17.6	-14.0	-15.2
Notio Aigaio	2,290	1,203	1,087	2,048	1,167	955	-10.6	-3.0	-12.1
Kriti	4,903	2,575	2,328	4,473	2,289	2,296	-8.8	-11.1	-1.4
Unknown	102	66	36	23	21	4	-77.5	-68.2	-88.9
<b>Total</b>	<b>98,373</b>	<b>49,281</b>	<b>49,092</b>	<b>87,663</b>	<b>44,203</b>	<b>43,460</b>	<b>-10.9</b>	<b>-10.3</b>	<b>-11.5</b>
Abroad	530	354	176	614	398	216	15.8	12.4	22.7

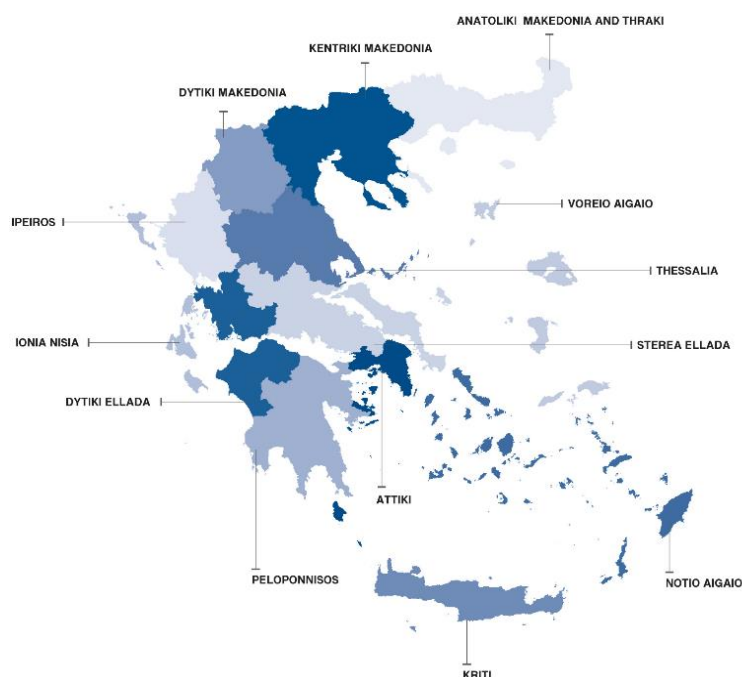
\*Provisional data

As regards the breakdown of data by place of usual residence of the deceased person, during the first thirty-five (35) weeks of 2023, a decrease of deaths is observed in all thirteen (13) Regions of the Country, compared to the corresponding period of 2022. The most notable decreases, in absolute figures, are observed in the Regions of Attiki, Kentriki Makedonia and Dytiki Ellada by 3,941, 2,928 and 1,018 deaths respectively (Graph 6, Table 5).

## EXPLANATORY NOTES

<b>Vital Statistics-Data on weekly deaths</b>	For the Vital statistics Survey, data are drawn from civil registry acts edited by the Municipal Authorities. Data presented in this publication refer to the weekly evolution of death counts according to the international standard of weeks ISO 8601. This is a data processing for the purpose of depicting, even using provisional data, the evolution of deaths in the Country and timely recording of mortality levels in relation to basic demographic variables.
<b>Reference periods</b>	2022: 3/1/2022 - 4/9/2022 2023: 2/1/2023 - 3/9/2023
<b>Legal Framework</b>	Law 344/76 concerning the “Registration of vital events” which lays down the obligations of the Civil Register Offices to collect and then transmit the data, as well as by Law 3832/2010 on the “Greek Statistical System”, both as amended.
<b>Coverage</b>	The Vital Statistics survey is an exhaustive survey and covers all deaths of usual resident population that occur in the Greek territory.
<b>Definitions</b>	All deaths of usual residents taking place in the Greek territory are recorded, regardless of the cause of death. Deaths of usual resident population of other countries are also recorded but not counted. The deaths of migrant-refugees during their attempt to approach European countries are not included. Causes of death are defined according to the International Statistical Classification of Diseases and Related Health Problems (ICD-10) and basic categories are Diseases of the Circulatory System, Diseases of the Respiratory System, Neoplasms, Infectious and Parasitic Diseases, Violent deaths and other causes, Covid-19 included.
<b>Methodology</b>	Data on deaths and vital statistics undergo the necessary quality checks, are processed, and presented in the form of tables.
<b>Geographical classification</b>	Geographical classification is based on the Nomenclature of Territorial Units for Statistics (NUTS). Data are disseminated at Country and Region (NUTS2) level.

**Map of the Regions (NUTS2) of Greece**





**International Standard of Dates** According to the international standard ISO 8601 the first thirty-five (35) weeks of 2022 and 2023 are defined as follows:

WEEK	2022	2023
1 <sup>st</sup>	3/1/2022 - 9/1/2022	2/1/2023 - 8/1/2023
2 <sup>nd</sup>	10/1/2022 - 16/1/2022	9/1/2023 - 15/1/2023
3 <sup>rd</sup>	17/1/2022 - 23/1/2022	16/1/2023 - 22/1/2023
4 <sup>th</sup>	24/1/2022 - 30/1/2022	23/1/2023 - 29/1/2023
5 <sup>th</sup>	31/1/2022 - 6/2/2022	30/1/2023 - 5/2/2023
6 <sup>th</sup>	7/2/2022 - 13/2/2022	6/2/2023 - 12/2/2023
7 <sup>th</sup>	14/2/2022 - 20/2/2022	13/2/2023 - 19/2/2023
8 <sup>th</sup>	21/2/2022 - 27/2/2022	20/2/2023 - 26/2/2023
9 <sup>th</sup>	28/2/2022 - 6/3/2022	27/2/2023 - 5/3/2023
10 <sup>th</sup>	7/3/2022 - 13/3/2022	6/3/2023 - 12/3/2023
11 <sup>th</sup>	14/3/2022 - 20/3/2022	13/3/2023 - 19/3/2023
12 <sup>th</sup>	21/3/2022 - 27/3/2022	20/3/2023 - 26/3/2023
13 <sup>th</sup>	28/3/2022 - 3/4/2022	27/3/2023 - 2/4/2023
14 <sup>th</sup>	4/4/2022 - 10/4/2022	3/4/2023 - 9/4/2023
15 <sup>th</sup>	11/4/2022 - 17/4/2022	10/4/2023 - 16/4/2023
16 <sup>th</sup>	18/4/2022 - 24/4/2022	17/4/2023 - 23/4/2023
17 <sup>th</sup>	25/4/2022 - 1/5/2022	24/4/2023 - 30/4/2023
18 <sup>th</sup>	2/5/2022 - 8/5/2022	1/5/2023 - 7/5/2023
19 <sup>th</sup>	9/5/2022 - 15/5/2022	8/5/2023 - 14/5/2023
20 <sup>th</sup>	16/5/2022 - 22/5/2022	15/5/2023 - 21/5/2023
21 <sup>st</sup>	23/5/2022 - 29/5/2022	22/5/2023 - 28/5/2023
22 <sup>nd</sup>	30/5/2022 - 5/6/2022	29/5/2023 - 4/6/2023
23 <sup>rd</sup>	6/6/2022 - 12/6/2022	5/6/2023 - 11/6/2023
24 <sup>th</sup>	13/6/2022 - 19/6/2022	12/6/2023 - 18/6/2023
25 <sup>th</sup>	20/6/2022 - 26/6/2022	19/6/2023 - 25/6/2023
26 <sup>th</sup>	27/6/2022 - 3/7/2022	26/6/2023 - 2/7/2023
27 <sup>th</sup>	4/7/2022 - 10/7/2022	3/7/2023 - 9/7/2023
28 <sup>th</sup>	11/7/2022 - 17/7/2022	10/7/2023 - 16/7/2023
29 <sup>th</sup>	18/7/2022 - 24/7/2022	17/7/2023 - 23/7/2023
30 <sup>th</sup>	25/7/2022 - 31/7/2022	24/7/2023 - 30/7/2023
31 <sup>st</sup>	1/8/2022 - 7/8/2022	31/7/2023 - 6/8/2023
32 <sup>nd</sup>	8/8/2022 - 14/8/2022	7/8/2023 - 13/8/2023
33 <sup>rd</sup>	15/8/2022 - 21/8/2022	14/8/2023 - 20/8/2023
34 <sup>th</sup>	22/8/2022 - 28/8/2022	21/8/2023 - 27/8/2023
35 <sup>th</sup>	29/8/2022 - 4/9/2022	28/8/2023 - 3/9/2023

**References** More information on deaths and Vital Statistics is available on the website of ELSTAT: <https://www.statistics.gr/en/home/> following the link: Statistics, Population and Social Conditions, Demography.