



CONSUMER PRICE INDEX: January, annual inflation 2.7%

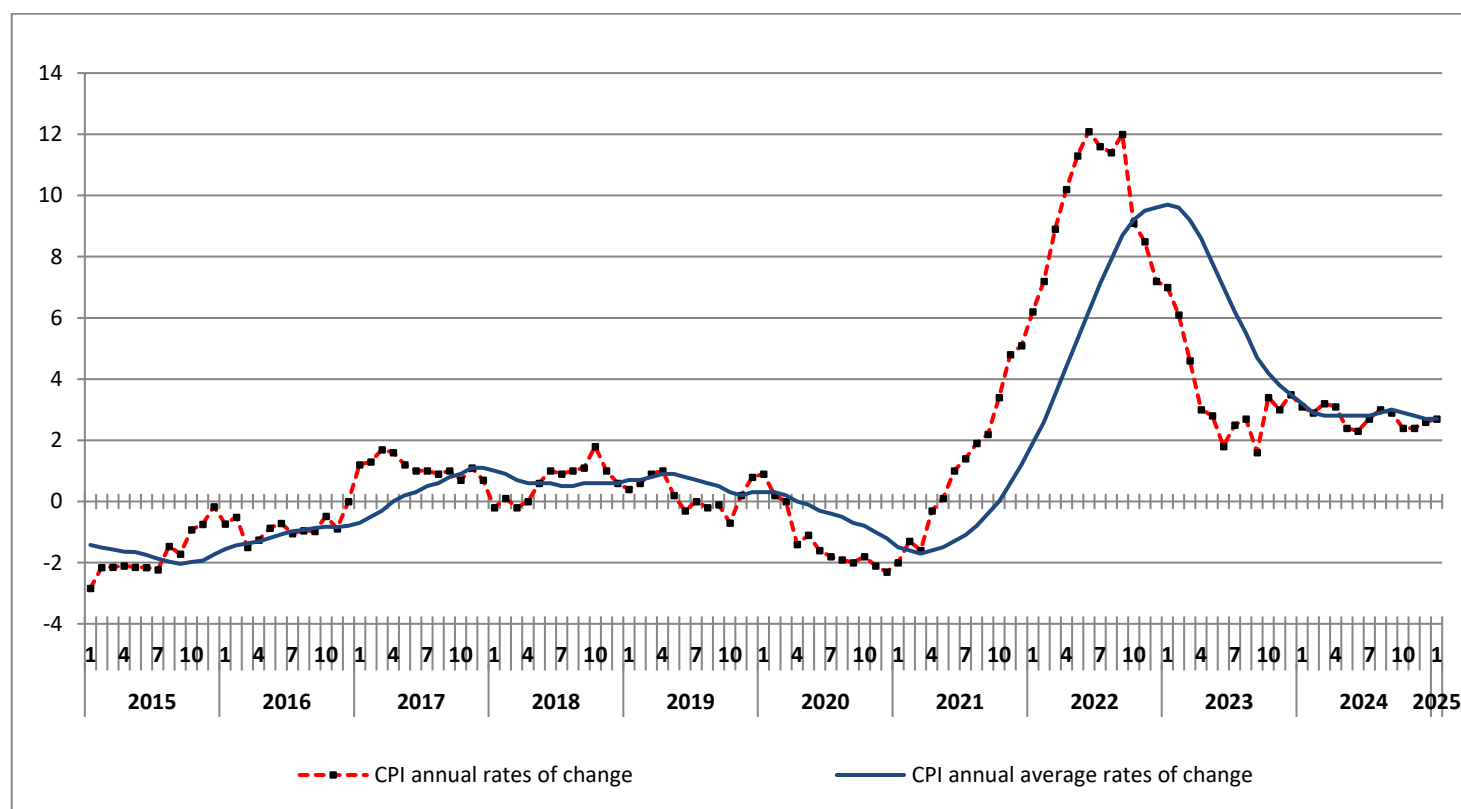
The evolution of the Consumer Price Index (CPI) of January 2025 (reference year 2020=100.0) is depicted as follows:

The CPI in January 2025 compared with December 2024, increased by 2.7%. In January 2024, the annual rate of change of the CPI was 3.1% (Table 2).

The CPI in January 2025 compared with December 2024, decreased by 0.7%. In January 2024, the monthly rate of change of the CPI was -0.8% (Table 2).

The average CPI for the twelve - month period from February 2024 to January 2025, compared with the corresponding index for the period February 2023 to January 2024 increased by 2.7%. The annual rate of change of the average CPI between the twelve - month period February 2023 to January 2024 and the period February 2022 to January 2023 was 3.2% (Table 3).

Graph 1. Annual and annual average rates of change (%) of CPI



Information on methodological issues:
Population, Employment and
Cost of Living Statistics Division
Section of Retail Price Indices
Acting Head of Section: A. Kourtaki
Tel: +30 213 135 2128
email: a.kourtaki@statistics.gr

Information for data provision:
Tel: +30 213 135 2022, 2308, 2310
email: data.dissem@statistics.gr

Analysis of changes of the CPI: January 2025

I. Monthly rates of change: January 2025 compared with December 2024 (Tables 1, 4)

The 0.7% decrease of the Overall CPI in January 2025, compared with the corresponding index in December 2024 is, mainly, due to the changes in the groups of goods and services as follows:

1. A decrease of:

- 22.9% in the group Clothing and footwear, due to the period of winter sales.
- 0.1% in the group Transport, due to the decrease, mainly, in the prices of *tickets for passenger transport by air*. This decrease was partly offset by the increase, mainly, in the prices of *fuels and lubricants*.

2. An increase of:

- 1.0% in the group Food and non-alcoholic beverages, due to the increase, mainly, in the prices of: *other bakery products, beef, poultry, dried salted or smoked meat, fresh fish, other edible oils, vegetables, chocolates-chocolate products, sauces-condiments, fruit and vegetable juices*. This increase was partly offset by the decrease, mainly, in the prices of: *olive oil, fresh fruit*.
- 0.9% in the group Alcoholic beverages and tobacco, due to the Increase, mainly, in the prices of *alcoholic beverages (not served)*.
- 0.6% in the group Housing, due to the increase, mainly, in the prices of: *rentals for dwellings, heating oil*. This increase was partly offset by the decrease, mainly, in the prices of *electricity*.
- 0.4% in the group Household equipment, due to the increase, mainly, in the prices of *non-durable household articles*.
- 0.3% in the group Recreation and culture, due to the increase, mainly, in the prices of *recreational services*.
- 0.3% in the group Hotel-Cafés-Restaurants, due to the increase, mainly, in the prices of *restaurants-confectioneries-cafes-buffets*.
- 0.7% in the group Miscellaneous goods and services, due to the increase, mainly, in the prices of: *other appliances and articles for personal care, private insurance connected with health*.

II. Annual rates of change: January 2025 compared with January 2024 (Tables 2, 5)

The 2.7% increase of the Overall CPI in January 2025, compared with the corresponding index in January 2024 is, mainly, due to the changes in the groups of goods and services as follows:

1. An increase of:

- 0.1% in the group Food and non-alcoholic beverages, due to the increase, mainly, in the prices of: *beef, pork, fresh fish, dried fruit and nuts, frozen vegetables, sugar-chocolates-sweets-ice creams, coffee - cocoa – tea, mineral water-refreshments-fruit juices*. This increase was partly offset by the decrease, mainly, in the prices of: *bread and cereals, dried salted or smoked meat, milk, cheese and eggs, olive oil, fresh fruit, fresh vegetables*.
- 0.8% in the group Alcoholic beverages and tobacco, due to the increase, mainly, in the prices of *alcoholic beverages (not served)*.
- 5.4% in the group Clothing and footwear, due to the increase in the prices of clothing and footwear.
- 4.6% in the group Housing, due to the increase, mainly, in the prices of: *rentals for dwellings, services for the repair and maintenance of the dwelling, electricity, natural gas*. This increase was partly offset by the decrease, mainly, in the prices of: *heating oil, solid fuels*.
- 3.5% in the group Health, due to the increase, mainly, in the prices of: *pharmaceutical products, medical products, medical-dental and paramedical services, hospital care*.
- 3.3% in the group Transport, due to the increase, mainly, in the prices of: *new motorcars, spare parts and accessories for motorcars, fuels and lubricants, maintenance and repair of motorcars-motorcycles, tickets for passenger transport by air*. This increase was partly offset by the decrease, mainly, in the prices of *second hand motorcars*.
- 1.2% in the group Communication, due to the increase, mainly, in the prices of *telephone services*.
- 1.3% in the group Recreation and culture, due to the increase, mainly, in the prices of: *information processing equipment, small recreational items-flowers-pets, recreational services, newspapers-books and stationary, package holidays*. This increase was partly offset by the decrease, mainly, in the prices of: *equipment for the reception, recording and reproduction of sound and picture, major durables for recreation and culture*.
- 2.6% in the group Education, due to the increase, mainly, in the prices of: *fees of pre-primary and primary education, fees of secondary education*.
- 5.1% in the group Hotel-Cafés-Restaurants, due to the increase, mainly, in the prices of: *restaurants-confectioneries-cafes-buffets, hotels-motels-inns*.
- 2.3% in the group Miscellaneous goods and services, due to the increase, mainly, in the prices of: *hairdressing salons and personal grooming establishments, other personal effects, social protection services, private insurance connected with health, motor vehicle insurance, other services*. This increase was partly offset by the decrease, mainly, in the prices of *other appliances and articles for personal care*.

2. A decrease of:

- 0.2% in the group Household equipment, due to the decrease, mainly, in the prices of *non-durable household articles*. This decrease was partly offset by the increase, mainly, in the prices of: *furniture and furnishing, domestic services*.

Table 1. Monthly rates of change of CPI
(Reference year: 2020=100.0)

Main groups of goods and services	Weights 2025 (%)	2025	2024	Rate of change %	2024	2023	Rate of change %
		January	December		January	December	
1. Food & non-alcoholic beverages	209.28	131.45	130.15	1.0	131.28	130.56	0.5
2. Alcoholic beverages and tobacco	34.20	106.43	105.53	0.9	105.55	103.80	1.7
3. Clothing and footwear	48.18	100.09	129.77	-22.9	94.97	122.21	-22.3
4. Housing	138.63	125.60	124.90	0.6	120.03	120.41	-0.3
5. Household equipment	43.38	114.16	113.69	0.4	114.36	114.94	-0.5
6. Health	77.51	111.88	111.90	0.0	108.14	107.84	0.3
7. Transport	145.29	122.35	122.47	-0.1	118.43	118.27	0.1
8. Communication	41.36	93.57	93.44	0.1	92.48	91.72	0.8
9. Recreation and culture	40.53	106.81	106.51	0.3	105.43	105.20	0.2
10. Education	34.86	109.51	109.51	0.0	106.73	106.73	0.0
11. Hotels-Cafés-Restaurants	117.76	121.67	121.25	0.3	115.77	114.54	1.1
12. Miscellaneous goods and services	69.02	108.33	107.55	0.7	105.91	104.82	1.0
Overall Index	1000.0	118.66	119.47	-0.7	115.50	116.47	-0.8

Note: The indices are rounded up to two decimal figures when published and percentage changes up to one decimal figure when published.

Graph 2. Annual and monthly rates of change (%) of CPI

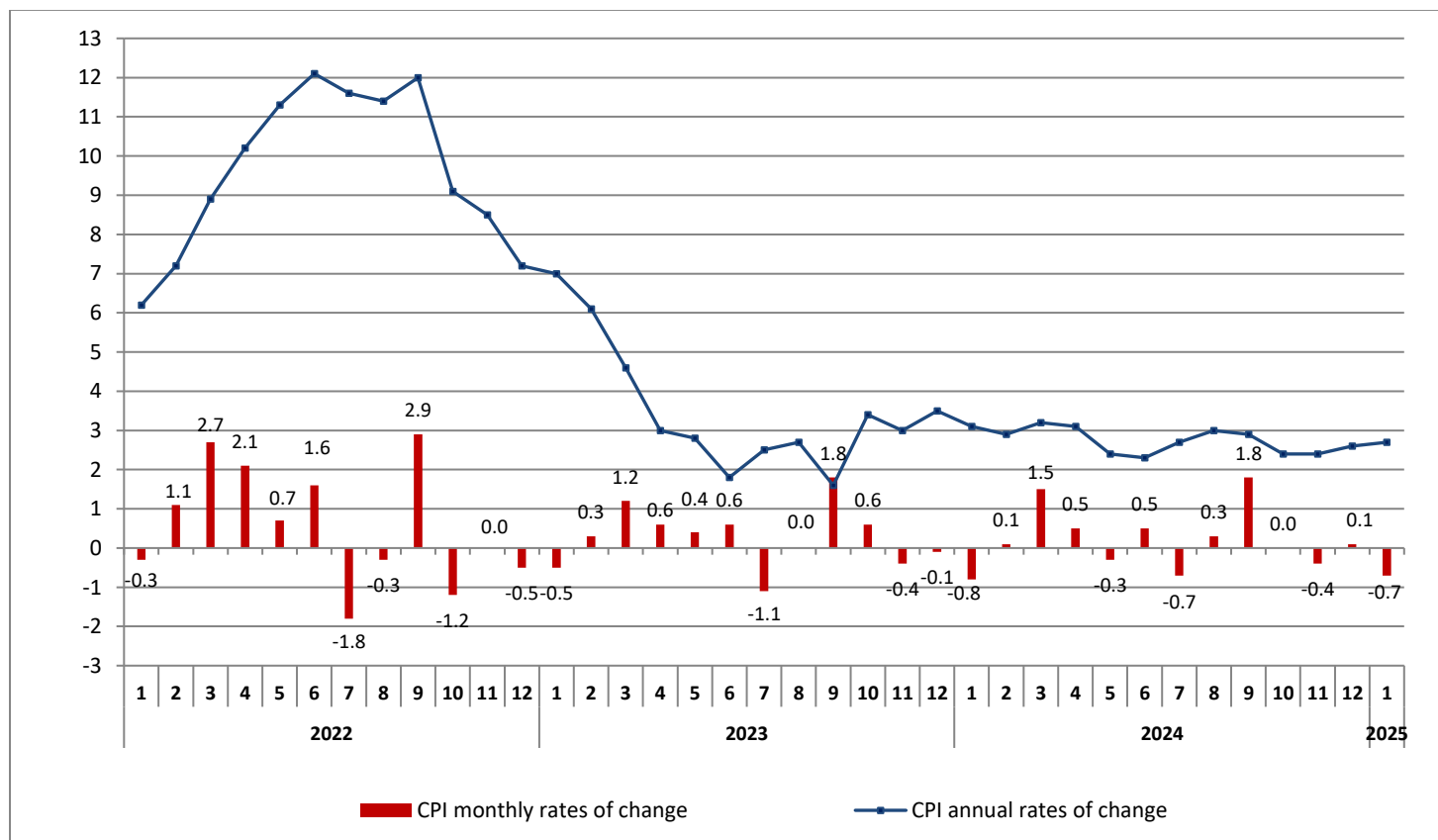


Table 2. Inflation – Annual rates of change of CPI**(Reference year: 2020=100.0)****I: January 2025/2024**

Main groups of goods and services		January		Rate of change (%)	Impact
		2025	2024		
1.	Food and non-alcoholic beverages	131.45	131.28	0.1	0.0254
2.	Alcoholic beverages and tobacco	106.43	105.55	0.8	0.0293
3.	Clothing and footwear	100.09	94.97	5.4	0.4459
4.	Housing	125.60	120.03	4.6	0.5831
5.	Household equipment	114.16	114.36	-0.2	-0.0082
6.	Health	111.88	108.14	3.5	0.2717
7.	Transport	122.35	118.43	3.3	0.4488
8.	Communication	93.57	92.48	1.2	0.0510
9.	Recreation and culture	106.81	105.43	1.3	0.0548
10.	Education	109.51	106.73	2.6	0.1149
11.	Hotels-Cafés-Restaurants	121.67	115.77	5.1	0.5601
12.	Miscellaneous goods and services	108.33	105.91	2.3	0.1625
Overall Index		118.66	115.50	2.7	

II: January 2024/2023

Main groups of goods and services		January		Rate of change (%)	Impact
		2024	2023		
1.	Food and non-alcoholic beverages	131.28	121.19	8.3	1.8252
2.	Alcoholic beverages and tobacco	105.55	102.83	2.6	0.1007
3.	Clothing and footwear	94.97	91.74	3.5	0.0555
4.	Housing	120.03	123.41	-2.7	-0.3806
5.	Household equipment	114.36	112.25	1.9	0.0884
6.	Health	108.14	102.32	5.7	0.4203
7.	Transport	118.43	118.16	0.2	0.0310
8.	Communication	92.48	94.57	-2.2	-0.0908
9.	Recreation and culture	105.43	102.76	2.6	0.1003
10.	Education	106.73	103.12	3.5	0.1290
11.	Hotels-Cafés-Restaurants	115.77	108.82	6.4	0.7324
12.	Miscellaneous goods and services	105.91	104.16	1.7	0.1212
Overall Index		115.50	111.99	3.1	

Note: The indices are rounded up to two decimal figures when published and percentage changes up to one decimal figure when published.

Table 3. Comparisons of the overall CPI
(Reference year: 2020=100.0)

Year and month	Overall Index	Monthly rates of change %	Annual rates of change Inflation %	Annual average index (moving average)	Annual average rates of change %
2022 : 1	104.68	-0.3	6.2	101.74	1.9
2	105.84	1.1	7.2	102.33	2.6
3	108.75	2.7	8.9	103.07	3.5
4	111.08	2.1	10.2	103.92	4.4
5	111.80	0.7	11.3	104.87	5.3
6	113.62	1.6	12.1	105.89	6.2
7	111.54	-1.8	11.6	106.86	7.1
8	111.21	-0.3	11.4	107.81	7.9
9	114.48	2.9	12.0	108.83	8.7
10	113.16	-1.2	9.1	109.61	9.2
11	113.15	0.0	8.5	110.36	9.5
12	112.53	-0.5	7.2	110.99	9.6
Annual average	110.99	-	-	110.99	9.6
2023 : 1	111.99	-0.5	7.0	111.60	9.7
2	112.33	0.3	6.1	112.14	9.6
3	113.73	1.2	4.6	112.55	9.2
4	114.45	0.6	3.0	112.83	8.6
5	114.91	0.4	2.8	113.09	7.8
6	115.62	0.6	1.8	113.26	7.0
7	114.30	-1.1	2.5	113.49	6.2
8	114.26	0.0	2.7	113.74	5.5
9	116.34	1.8	1.6	113.90	4.7
10	117.00	0.6	3.4	114.22	4.2
11	116.57	-0.4	3.0	114.50	3.8
12	116.47	-0.1	3.5	114.83	3.5
Annual average	114.83	-	-	114.83	3.5
2024 : 1	115.50	-0.8	3.1	115.12	3.2
2	115.61	0.1	2.9	115.40	2.9
3	117.39	1.5	3.2	115.70	2.8
4	117.96	0.5	3.1	116.00	2.8
5	117.66	-0.3	2.4	116.23	2.8
6	118.24	0.5	2.3	116.44	2.8
7	117.38	-0.7	2.7	116.70	2.8
8	117.68	0.3	3.0	116.98	2.9
9	119.76	1.8	2.9	117.27	3.0
10	119.79	0.0	2.4	117.50	2.9
11	119.33	-0.4	2.4	117.73	2.8
12	119.47	0.1	2.6	117.98	2.7
Annual average	117.98	-	-	117.98	2.7
2025 : 1	118.66	-0.7	2.7	118.24	2.7

Note: The indices are rounded up to two decimal figures when published and percentage changes up to one decimal figure when published.

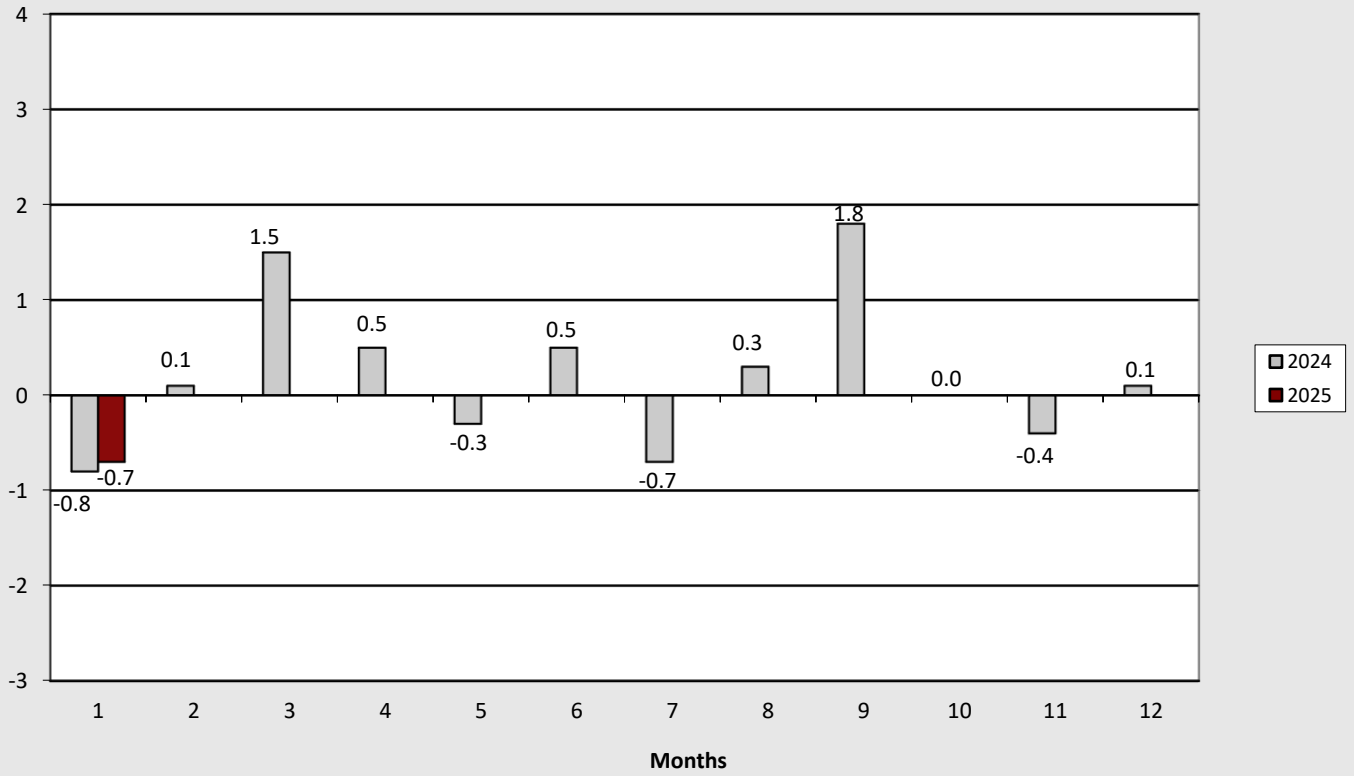
**Table 4. Major price changes from index comparison between
January 2025 and December 2024 and their impact
on the Overall CPI**

Goods and services	Rate of change (%)	Impact
Other bakery products	1.8	0.01
Beef	1.5	0.03
Poultry	2.1	0.02
Dried salted or smoked meat	2.6	0.01
Fresh fish	6.0	0.06
Other edible oils	9.8	0.01
Vegetables	2.1	0.06
Chocolates-chocolate products	5.9	0.01
Sauces-condiments	6.9	0.01
Fruit and vegetable juices	6.1	0.01
Olive oil	-3.8	-0.04
Fresh fruit	-1.1	-0.02
Alcoholic beverages (not served)	1.8	0.03
Rentals for dwellings	0.7	0.03
Heating oil	4.1	0.08
Electricity	-0.9	-0.03
Passenger transport by air	-7.8	-0.15
Fuels and lubricants	2.3	0.13
Recreational services	2.5	0.02
Restaurants-confectioneries-cafes-buffets	0.4	0.04
Other appliances and articles for personal care	0.4	0.01
Private insurance connected with health	7.0	0.04
Winter sales	-	-1.14

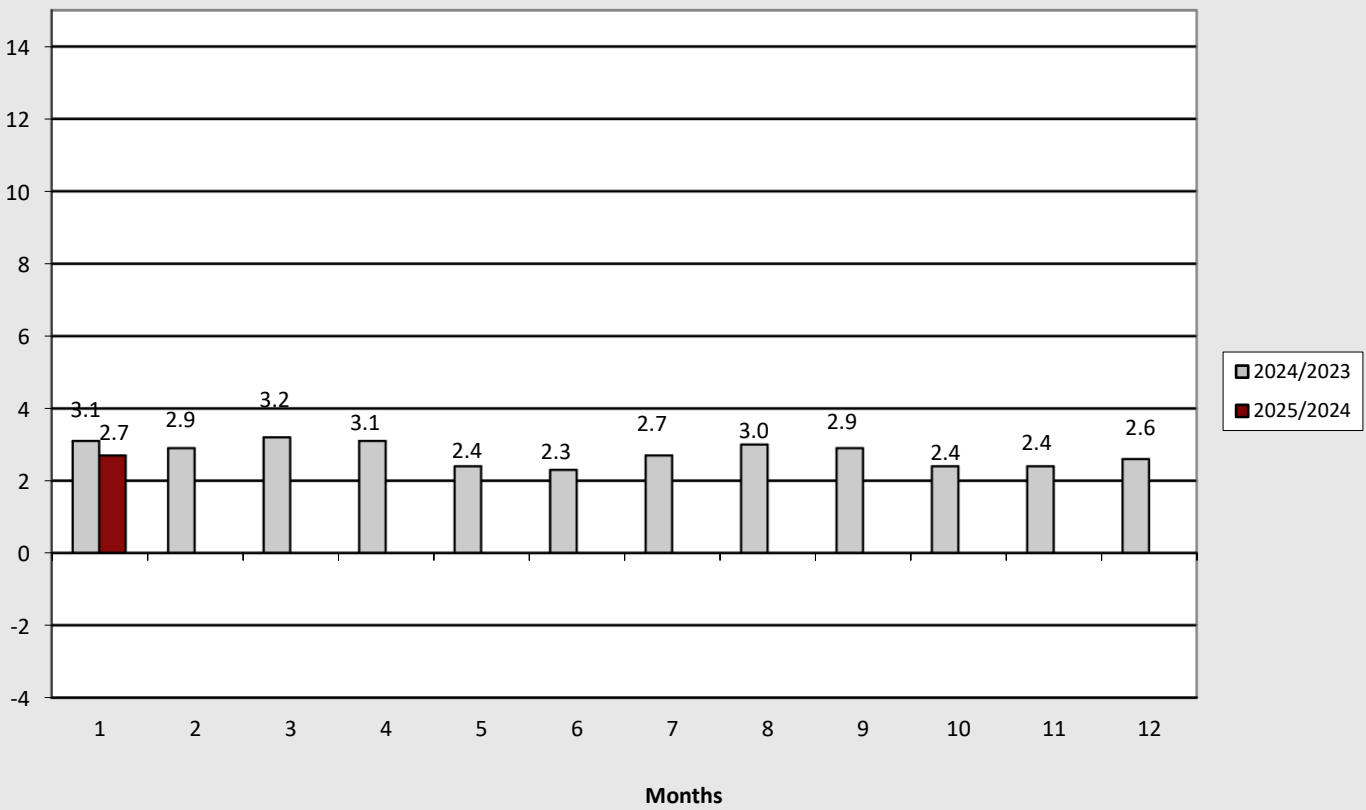
Table 5. Major price changes from index comparison between January 2025 and January 2024 and their impact on the Overall CPI

Goods and services	Rate of change (%)	Impact
Beef	5.7	0.10
Pork	2.0	0.02
Fresh fish	7.1	0.07
Dried fruit and nuts	4.8	0.01
Frozen vegetables	4.6	0.02
Sugar-chocolates-sweets-ice creams	3.9	0.04
Coffee - cocoa - tea	2.2	0.01
Mineral water-refreshments-fruit juices	7.6	0.05
Bread and cereals	-0.4	-0.02
Dried salted or smoked meat	-2.3	-0.01
Milk, cheese and eggs	-1.9	-0.07
Olive oil	-10.5	-0.11
Fresh fruit	-2.7	-0.04
Fresh vegetables	-1.3	-0.02
Alcoholic beverages (not served)	1.2	0.02
Clothing and footwear	5.4	0.45
Rentals for dwellings	9.2	0.34
Services for the repair and maintenance of the dwelling	4.1	0.03
Electricity	5.9	0.17
Natural gas	26.5	0.07
Heating oil	-2.8	-0.02
Solid fuels	-4.2	-0.02
Non-durable household articles	-4.0	-0.07
Furniture and furnishings	3.0	0.01
Domestic services	5.0	0.05
Pharmaceutical products	3.8	0.10
Medical products	3.8	0.03
Medical-dental and paramedical services	2.0	0.04
Hospital care	4.0	0.10
New motorcars	2.8	0.06
Spare parts and accessories for motorcars	2.7	0.01
Fuels and lubricants	0.7	0.05
Maintenance and repair of motorcars - motorcycles	3.2	0.02
Passenger transport by air	31.6	0.35
Second hand motorcars	-5.0	-0.07
Telephone services	1.5	0.06
Information processing equipment	3.1	0.01
Small recreational items-flowers-pets	1.1	0.01
Recreational services	4.9	0.03
Newspapers, books and stationery	3.6	0.02
Package holidays	8.4	0.02
Equipment for the reception, recording and reproduction of sound	-8.7	-0.02
Major durables for recreation and culture	-2.9	-0.03
Pre-primary and primary education	2.1	0.02
Secondary education	3.1	0.08
Restaurants-confectioneries-cafes-buffets	4.6	0.49
Hotels-motels-inns	16.8	0.07
Hairdressing salons and personal grooming establishments	4.8	0.06
Other personal effects	4.2	0.02
Social protection services	5.9	0.01
Private insurance connected with health	7.0	0.05
Motor vehicle insurance	5.6	0.08
Other services	4.6	0.02
Other appliances and articles for personal care	-2.3	-0.07

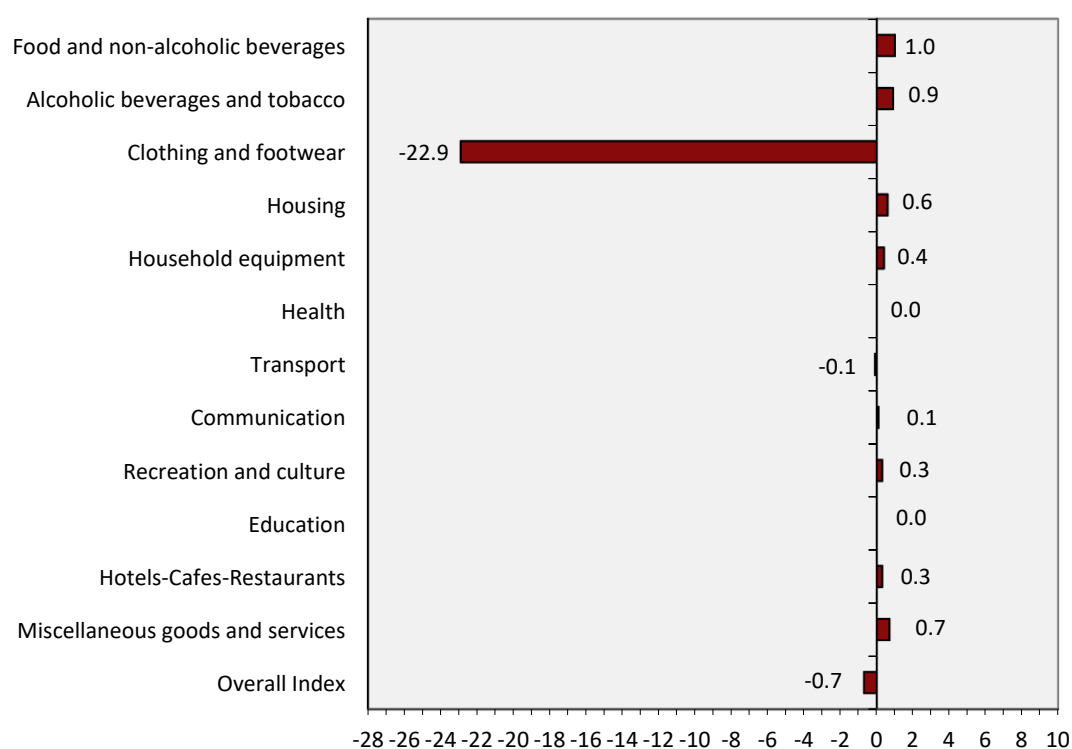
Graph 3. Monthly rates of change (%) of the overall CPI, 2024 and 2025



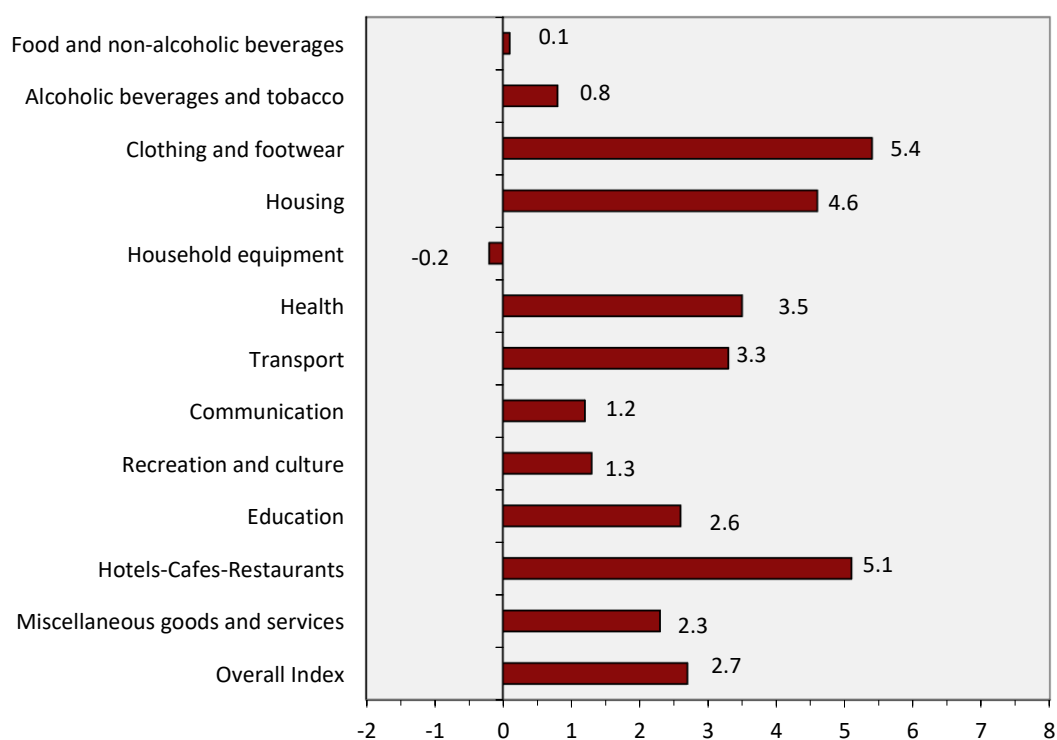
Graph 4. Annual rates of change (%) of the overall CPI, 2024 and 2025



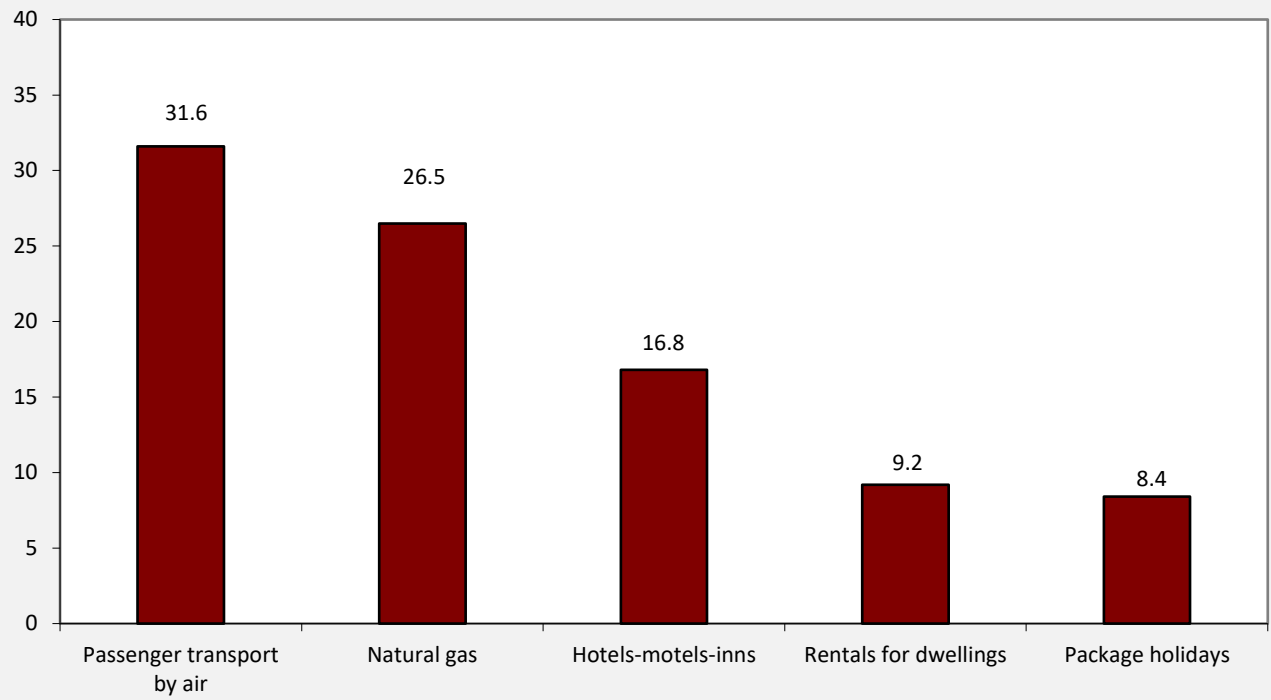
Graph 5. Monthly rates of change (%) of CPI between January 2025 and December 2024



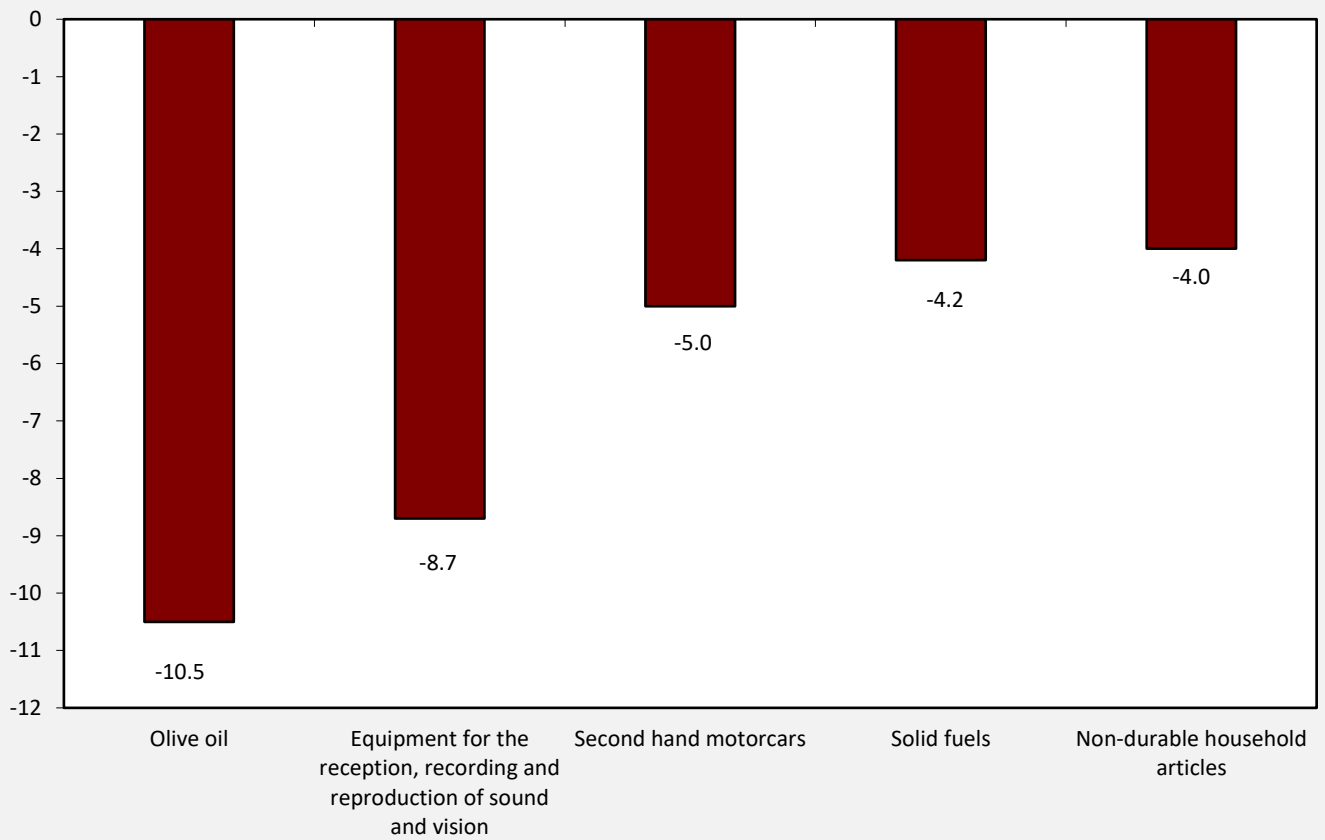
Graph 6. Annual rates of change (%) of CPI between January 2025 and January 2024



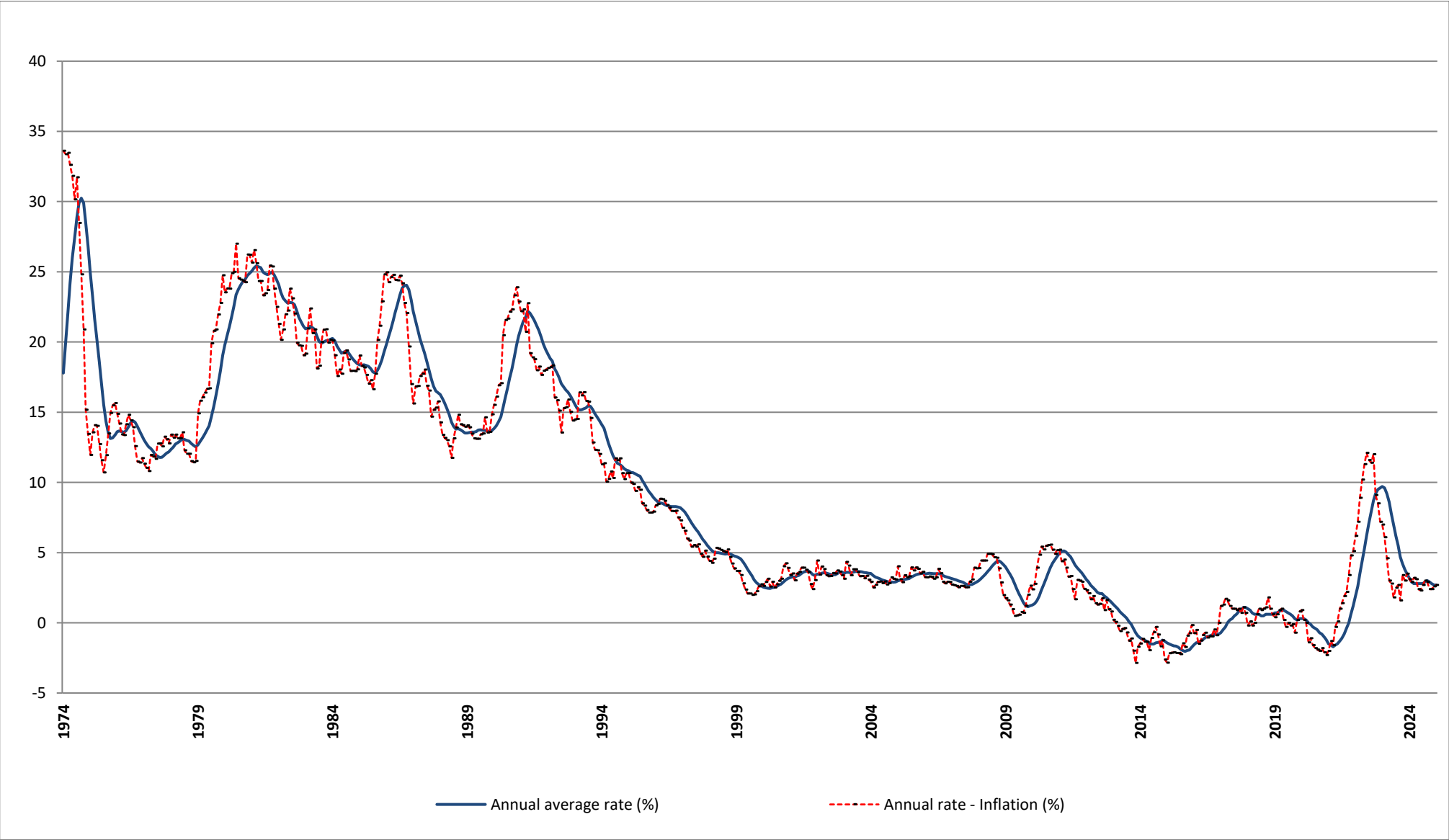
Graph 7. CPI highest annual increases (%)



Graph 8. CPI highest annual decreases (%)



Graph 9. Historical evolution of CPI, 1974 – 2025



METHODOLOGICAL NOTES

Generally	The Consumer Price Index (CPI) is compiled by the Hellenic Statistical Authority (ELSTAT) since 1959. Until the year 2000, the CPI referred to the urban areas of the Country, while from 2001 onwards it refers to the whole Country covering urban, semi-urban and rural areas.
Purpose of the index	The purpose of the CPI is to measure the general level of prices of goods and services purchased by the average Greek household.
Legal basis	Law 3832/2010 .
Reference period	Month.
Base	December of the previous year.
Reference year	2020=100.0.
Chain linking Index	The CPI index follows the chain linking method, introducing new weights annually and having as a base the December of the previous year. The weights are estimated on the basis of the most recent available data of the Household Budget Survey (HBS), extrapolated to the prices of December. The CPI, adjusted on an annual basis to the most recent consumption expenditure pattern of the private households of the Country, ensures the representativeness of goods and services, which compose the “basket” of purchases of the average household.
Geographical and population coverage of the CPI	The CPI refers to the whole Country and covers the resident households of the territory excluding collective households (hospitals, homes for the elderly, boarding houses, prisons, etc.) and non-resident households (tourists) in the Country.
Classification of items	The classification of the CPI items (goods and services) is based on the international classification COICOP (Classification of Individual Consumption by Purpose) as this has been adapted to the needs of the HICPs of the EU Member States with the COICOP5/HICP classification.
Weights of items	The weights of CPI items are updated every year, on the basis of the most recent available data of HBS. The weights are calculated as the share (%) of the expenditures for each group, subgroup and item (good or service) to the total household expenditure of the average household.
Price collection Cities	The CPI prices are collected in 27 cities with representative markets for the coverage of the 13 Regions of the Country. The selection criteria of the price collection cities are the size and the particularities of their markets, the possibility of continuous price collection, the comparability of the index and the cost of price collection.
Population weights	The calculation of the population weights by regions is based on the population data of the 2021 General Population Census and the expenditure data of the latest available HBS by regions.
Selection of items	The composition of the "household basket" i.e. the selection of goods and services which are included in the calculation of CPI is updated annually, using the results of the latest available HBS, other market research, etc. The chain linking methodology allows the change of items of the household basket on an annual basis, in order to ensure the representativeness of the items involved in the calculation of groups and subgroups of CPI.
Price collection-Outlets	The prices collection outlets are retail stores, enterprises providing services, street markets etc. which are considered representative of the branches of shops, where the households make their purchases in the 27 selected cities. The methodology allows the renewal of price collection sources, annually, in order to maintain their representativeness in the calculation of CPI. Prices are collected by employees of ELSTAT as well as by external price collectors, hired on a temporary basis. They pay a visit to the selected outlets within a specific time period of a month (monthly prices) or on a specific day of the week (weekly prices). The collected prices correspond to the prices actually faced by the consumer.
Specification-Substitution of items	All the collected items are defined by the specification, that is the particular characteristics which determine the quality, the trade show and the identity, in general, of good products (such as brand, weight, package etc), in order to avoid any price variations attributable to differences in the specification. Once a specified item (good or service) is no longer available in the market or has ceased to be important, as regards consumption, it is substituted by a newly specified item, which has taken its place in the market.

Calculation of the Consumer Price Index

The Consumer Price Index is a Laspeyres-type index and it is calculated based on December of the previous year.

Implementation of formula in five-digit level of COICOP5

Specifically, if the five-digit item h includes q price collected items, then its index in month t of year T , $R_h^{t,T}$, is given by the following formula:

$$R_h^{t,T} = R_h^{12,T-1} \left[\frac{\sum_{i=1}^q w_i^T R_i^{t,T} / R_i^{12,T-1}}{\sum_{i=1}^q w_i^T} \right],$$

where:

$R_h^{12,T-1}$ = the index of the five-digit item h , in December of year $T-1$.

w_i^T = the weight of the price collected item i , in year T .

$R_i^{t,T}$ = the index of the price collected item i , in month t of year T .

$R_i^{12,T-1}$ = the index of the price collected item i , in December of year $T-1$.

A similar methodology is followed for the calculation of indices in the upper levels (two-digit, three-digit and four-digit) of COICOP5 and the calculation of the overall CPI as well.

Publication of data The published CPI time series (reference year 2020=100.0), covers the period from January 1959 onwards. The CPI data are released each month as scheduled, in accordance with the Releases Calendar of ELSTAT, with the [Release and the tables](#).

References Further information concerning the methodology and the compilation of the CPI is available in the [Single Integrated Metadata Structure \(SIMS\)](#).