



PRESS RELEASE

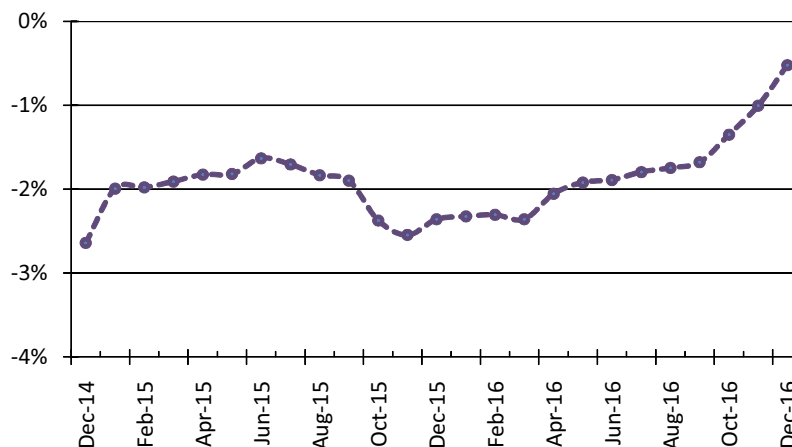
MATERIAL COSTS INDEX IN CONSTRUCTION OF NEW RESIDENTIAL BUILDINGS: DECEMBER 2016, y-o-y decrease 0.5%

The Overall Material Costs Index in Construction of New Residential Buildings in December 2016 compared with the corresponding index of December 2015 recorded a decrease of 0.5%. The index in December 2015 had recorded a decrease of 2.4% compared with the corresponding index of December 2014 (Table 1).

The Overall Material Costs Index in December 2016 compared with the corresponding index of November 2016 recorded an increase of 0.3%. The index had recorded a decrease of 0.2% between December 2015 and November 2015 (Table 2).

The average Material Costs Index for the twelve-month period from January 2016 to December 2016, compared with the same index for the twelve-month period from January 2015 to December 2015, decreased by 1.7%. The comparison of the twelve-month average Material Costs Index in the corresponding previous twelve-month periods recorded a decrease of 2.0% (Table 3).

Evolution of annual rate of changes of Material Costs Index
in Construction of New Residential Buildings (2010=100.0)



Information:

Economic and Short-Term Indices Division
Wholesale Prices and Price Indices Section
Costas Paschalidis
Tel: +30 213 135 2713 Fax:+30 213 135 2714
Email: k.paschalidis@statistics.gr

Table 1: Annual rate of changes of the Material Costs Index in Construction of New Residential Buildings

Base year: 2010=100.0

Code	Material groups	Weighting coefficient	December			Change (%)	
			2016	2015	2014	2016/2015	2015/2014
14612	Overall Index	100.00	95.2	95.7	98.0	-0.5	-2.4
1461201	Cement, mortars and ready mixed concrete	16.81	91.3	92.7	94.7	-1.6	-2.1
1461202	Natural stone	1.77	95.9	95.9	96.8	0.1	-1.0
1461203	Marble products, granites	3.96	97.7	98.0	97.9	-0.3	0.1
1461204	Artificial stone	4.67	106.5	106.5	107.6	0.0	-1.1
1461205	Timber and builders' carpentry	15.39	88.4	89.3	91.5	-1.0	-2.4
1461206	Basic metals	24.78	95.1	95.3	99.4	-0.2	-4.2
1461207	Plumbing, heating and drainage equipment and supplies	9.29	102.7	101.9	104.1	0.7	-2.0
1461208	Door and window fittings	2.03	95.3	95.3	96.3	0.1	-1.1
1461209	Electrical equipment	4.74	95.9	97.1	97.3	-1.2	-0.2
1461210	Glass products	3.25	96.2	96.5	97.1	-0.3	-0.6
1461211	Paints and varnishes	2.75	100.3	100.9	101.3	-0.6	-0.4
1461212	Floor and wall tiles and sanitary ware	4.70	96.3	97.8	100.3	-1.6	-2.5
1461213	Insulating materials	1.33	99.3	99.4	101.0	-0.2	-1.5
1461214	Elevators	2.91	87.6	88.1	90.2	-0.6	-2.4
1461215	Fuel for machinery (diesel), electricity, water	1.62	114.7	111.6	117.1	2.8	-4.7

Note: The indices and the percentage changes are published rounded up to one decimal figure.

Table 2: Monthly rates of change of the Material Costs Index in Construction of New Residential Buildings

Base year: 2010=100.0

Code	Material groups	Weighting coefficient	December 2016	November 2016	Change (%)	December 2015	November 2015	Change (%)
14612	Overall Index	100.00	95.2	94.9	0.3	95.7	95.9	-0.2
1461201	Cement, mortars and ready mixed concrete	16.81	91.3	91.2	0.1	92.7	92.7	0.0
1461202	Natural stone	1.77	95.9	95.9	0.0	95.9	96.0	-0.2
1461203	Marble products, granites	3.96	97.7	97.7	0.0	98.0	98.0	0.0
1461204	Artificial stone	4.67	106.5	106.5	0.0	106.5	107.2	-0.7
1461205	Timber and builders' carpentry	15.39	88.4	88.5	-0.1	89.3	89.3	0.0
1461206	Basic metals	24.78	95.1	94.9	0.2	95.3	95.5	-0.2
1461207	Plumbing, heating and drainage equipment and supplies	9.29	102.7	101.0	1.7	101.9	102.2	-0.2
1461208	Door and window fittings	2.03	95.3	95.3	0.0	95.3	95.5	-0.2
1461209	Electrical equipment	4.74	95.9	94.8	1.2	97.1	97.5	-0.4
1461210	Glass products	3.25	96.2	96.1	0.1	96.5	96.3	0.2
1461211	Paints and varnishes	2.75	100.3	100.3	0.0	100.9	100.9	0.0
1461212	Floor and wall tiles and sanitary ware	4.70	96.3	96.4	-0.1	97.8	97.9	-0.1
1461213	Insulating materials	1.33	99.3	99.3	0.0	99.4	99.7	-0.3
1461214	Elevators	2.91	87.6	87.6	0.0	88.1	88.4	-0.3
1461215	Fuel for machinery (diesel), electricity, water	1.62	114.7	113.0	1.5	111.6	113.9	-2.0

Note: The indices and the percentage changes are published rounded up to one decimal figure.

Table 3: Material Cost Price Indices Changes

Base year: 2010=100.0

Year and month	Overall Index	Monthly rates of change (%)	Annual rates of change (%)	Annual average index (moving average)	Annual average rates of change (%)
2014: I	99.7	-1.0	-2.7	101.3	-1.7
II	99.5	-0.2	-2.7	101.1	-1.8
III	99.2	-0.2	-2.9	100.9	-2.0
IV	99.1	-0.2	-2.8	100.6	-2.1
V	99.0	-0.1	-2.7	100.4	-2.2
VI	98.7	-0.3	-3.0	100.1	-2.3
VII	98.6	-0.1	-2.9	99.9	-2.4
VIII	98.4	-0.1	-2.9	99.6	-2.5
IX	98.3	-0.1	-2.9	99.4	-2.6
X	98.4	0.0	-2.6	99.2	-2.7
XI	98.4	0.0	-2.4	99.0	-2.7
XII	98.0	-0.4	-2.6	98.8	-2.8
<i>Annual Average</i>	98.8			98.8	-2.8
2015: I	97.7	-0.3	-2.0	98.6	-2.7
II	97.5	-0.2	-2.0	98.4	-2.6
III	97.4	-0.2	-1.9	98.3	-2.6
IV	97.2	-0.1	-1.8	98.1	-2.5
V	97.2	-0.1	-1.8	98.0	-2.4
VI	97.1	-0.1	-1.6	97.8	-2.3
VII	96.9	-0.2	-1.7	97.7	-2.2
VIII	96.6	-0.2	-1.8	97.6	-2.1
IX	96.5	-0.2	-1.9	97.4	-2.0
X	96.0	-0.4	-2.4	97.2	-2.0
XI	95.9	-0.2	-2.5	97.0	-2.0
XII	95.7	-0.2	-2.4	96.8	-2.0
<i>Annual Average</i>	96.8			96.8	-2.0
2016: I	95.4	-0.3	-2.3	96.6	-2.0
II	95.3	-0.2	-2.3	96.4	-2.0
III	95.1	-0.2	-2.4	96.2	-2.1
IV	95.2	0.2	-2.1	96.1	-2.1
V	95.3	0.1	-1.9	95.9	-2.1
VI	95.2	-0.1	-1.9	95.8	-2.1
VII	95.1	-0.1	-1.8	95.6	-2.1
VIII	94.9	-0.2	-1.7	95.5	-2.1
IX	94.8	-0.1	-1.7	95.3	-2.1
X	94.7	-0.1	-1.3	95.2	-2.0
XI	94.9	0.2	-1.0	95.2	-1.9
XII	95.2	0.3	-0.5	95.1	-1.7
<i>Annual Average</i>	95.1			95.1	-1.7

Note: The indices and the percentage changes are published rounded up to one decimal figure.

METHODOLOGICAL NOTES

Generally	The compilation of the Material Costs Index in Construction of New Residential Buildings started in 1971. The index is being released with their current form since February 2013 with base year 2010=100.0 and the time series were revised accordingly.
Purpose of the index – definitions	<p>The purpose of the index is to measure the monthly rates of change in the prices of building materials paid by the constructors and are consumed in the construction of new residential buildings.</p> <p>The Material Costs Index is a monthly index and consists a sub-index of the overall cost index in construction of new residential buildings.</p> <p>For the compilation of the index the selected prices of the materials are those which are actually paid by the construction enterprises for materials supplied at the site and do not include VAT and other taxes.</p>
Legal basis	The compilation of the Material Costs Index is governed by Council Regulation (EEC) No.1165/98 concerning short-term statistics and by Regulation No.1158/05 (amending the above mentioned Regulation) of the European Parliament and of the Council.
Reference period	Month
Base year	2010=100.0
Revision	The Material Costs Index is a fixed base index. After the last revision, the index is calculated with base year 2010=100.0. Pursuant to the provisions of Council Regulation No 1165/98 concerning short-term statistics, the index in question is revised every five (5) years, on years ending in 0 or 5.
Statistical classification	The national classification is followed, which includes 91 categories of materials, aggregated in 15 groups.
Geographical coverage	The geographical coverage of the index includes the country as a whole, but prices are collected only in the biggest cities of the country (Greater Athens, Thessaloniki, Patras, Herakleion Larisa and Volos,).
Coverage of economic activities	The Material Costs Index in Construction of New Residential Buildings is an input index that refers to the purchase prices of materials paid by the constructors of new residential buildings.
Statistical survey	A total number of 1515 observations (prices) collected from 280 commercial or industrial enterprises supplying building materials, are used for the compilation of the index. For electricity, prices are collected from the Public Power Corporation, while for water, data are provided by water supplies companies.
Publication of data	The index with the new base year 2010=100.0 is being released since March 2013, with February 2013 as the first reference month. Times series data with base year 2010=100.0 are available from January 2000 onwards.
References	More information on the methodology concerning the compilation and calculation of the index and for the time series is available on the ELSTAT website: http://www.statistics.gr/en/statistics/-/publication/DKT60/