

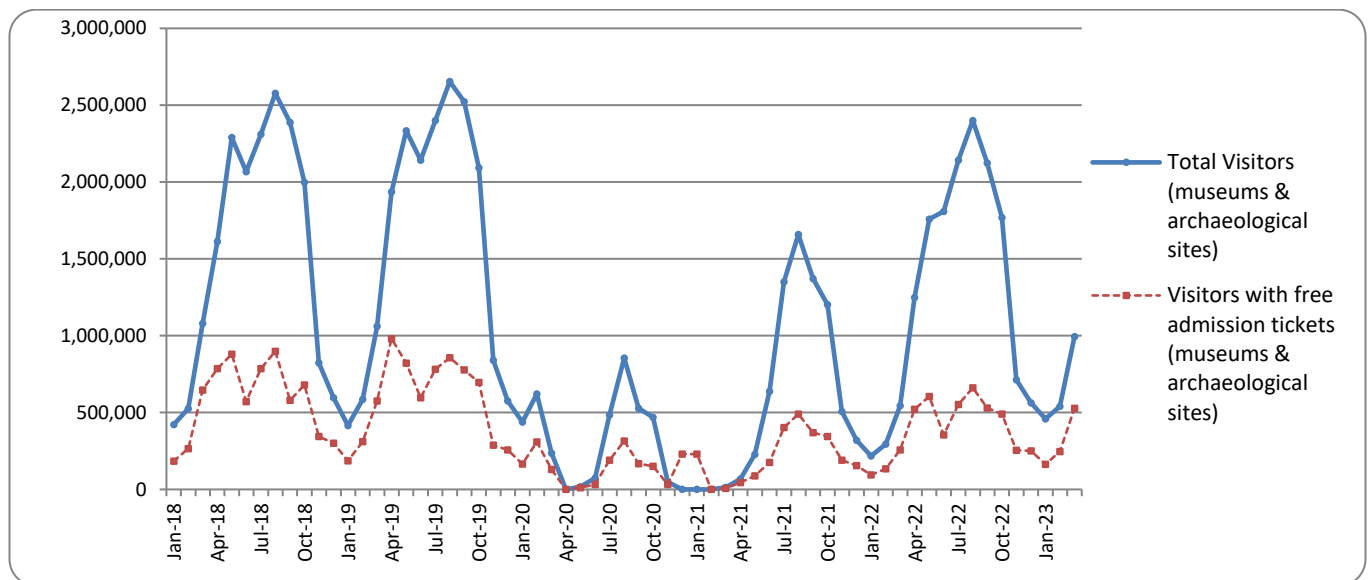


## SURVEY ON MUSEUMS AND ARCHAEOLOGICAL SITES ATTENDANCE MARCH 2023

The Hellenic Statistical Authority (ELSTAT) announces the results of the *Survey on Museums and Archaeological Sites Attendance* for March 2023. More specifically:

- During March 2023 compared with the corresponding month of 2022, museums recorded an 81.0% increase in the number of visitors and a 96.4% increase in the number of free admission visitors, as well as a 130.2% increase in their receipts (Table 1).
- As regards archaeological sites, in March 2023 compared with the corresponding month of 2022, an increase of 83.5% was recorded in the number of visitors, of 112.9% in the number of free admission visitors and of 81.6% in the corresponding receipts (Table 1).
- During the three month period from January to March 2023, compared to the corresponding period of 2022, an increase of 95.9% was recorded in the number of visitors of Museums, of 108.9% in the number of free admission visitors and of 144.8% in the relevant receipts (Table 2).
- As regards Archaeological sites, during the three month period from January to March 2023, compared to the corresponding period of 2022, an increase of 83.8% was recorded in the number of visitors, while an increase of 81.5% was observed in the number of free admission visitors and of 103.9% in the relevant receipts (Table 2).

**Graph 1: Visitors of Museums and Archaeological sites (January 2018 – March 2023)**



**Information on methodological issues:**

Sectoral Statistics Division  
Tourism and Culture Statistics Section  
Head of Section: Eleni Papadopoulou  
Tel: +30 213 135 2168  
e-mail: [e.papadopoulou@statistics.gr](mailto:e.papadopoulou@statistics.gr)

**Information for data provision:**

Tel. +30 213 135 2022, 2308, 2310  
e-mail: [data.dissem@statistics.gr](mailto:data.dissem@statistics.gr)

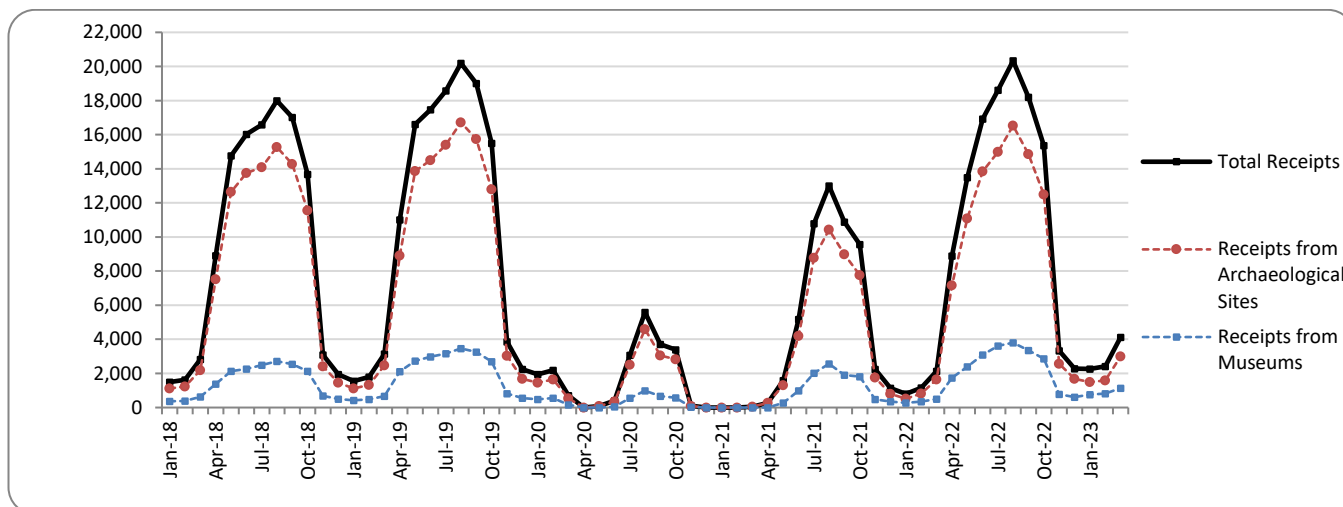
**TABLE 1: VISITORS OF MUSEUMS AND ARCHAEOLOGICAL SITES - TOTAL RECEIPTS  
(MARCH 2022 & MARCH 2023)**

<b>I. NUMBER OF VISITORS</b>			
Museums and Archaeological sites	2022	2023	Change 2023/2022
<b>Total number of visitors (A+B)</b>	<b>544,306</b>	<b>993,644</b>	<b>82.6%</b>
<b>A. Museums (C+E)</b>	<b>212,786</b>	<b>385,229</b>	<b>81.0%</b>
Acropolis Museum	68,400	160,440	134.6%
National Archaeological	21,337	47,608	123.1%
Ancient Olympia	4,279	4,716	10.2%
Palace of the Grand Master (Rhodes)	2,272	7,216	217.6%
Herakleion Archaeological (Crete)	4,026	8,787	118.3%
White Tower	7,998	7,128	-10.9%
Delphi	7,368	19,938	170.6%
Other museums	97,106	129,396	33.3%
<b>B. Archaeological Sites (D+F)</b>	<b>331,520</b>	<b>608,415</b>	<b>83.5%</b>
Epidavros <sup>(1)</sup>	14,553	43,411	198.3%
The Acropolis of Mycenae & Atreus' Treasure	15,306	42,248	176.0%
The Acropolis of Athens	119,839	227,354	89.7%
Sounio	17,873	21,193	18.6%
The Acropolis of Lindos	1,254	5,514	339.7%
Royal Tombs of Vergina	7,668	19,192	150.3%
Ancient Olympia	9,509	21,623	127.4%
Knossos (Crete)	7,329	12,395	69.1%
Phaistos (Crete)	739	1,165	57.6%
Ancient Korinthos <sup>(1)</sup>	5,254	11,172	112.6%
Mystras <sup>(1)</sup>	5,408	9,260	71.2%
Delphi	13,445	33,189	146.9%
Other archaeological sites	113,343	160,699	41.8%
<b>II. VISITORS WHO PAID TICKET</b>			
	2022	2023	Change 2023/2022
<b>Total number of visitors who paid ticket (C+D)</b>	<b>287,079</b>	<b>465,383</b>	<b>62.1%</b>
C. Museums	95,498	154,862	62.2%
D. Archaeological sites	191,581	310,521	62.1%
<b>III. VISITORS WITH FREE ADMISSION TICKETS</b>			
	2022	2023	Change 2023/2022
<b>Total number of visitors with free admission ticket (E+F)</b>	<b>257,227</b>	<b>528,261</b>	<b>105.4%</b>
E. Museums	117,288	230,367	96.4%
F. Archaeological sites	139,939	297,894	112.9%
<b>IV. RECEIPTS (euros)</b>			
	2022	2023	Change 2023/2022
<b>Total Receipts (G+H)</b>	<b>2,140,219</b>	<b>4,128,523</b>	<b>92.9%</b>
G. Museums	496,095	1,141,975	130.2%
H. Archaeological sites	1,644,124	2,986,548	81.6%

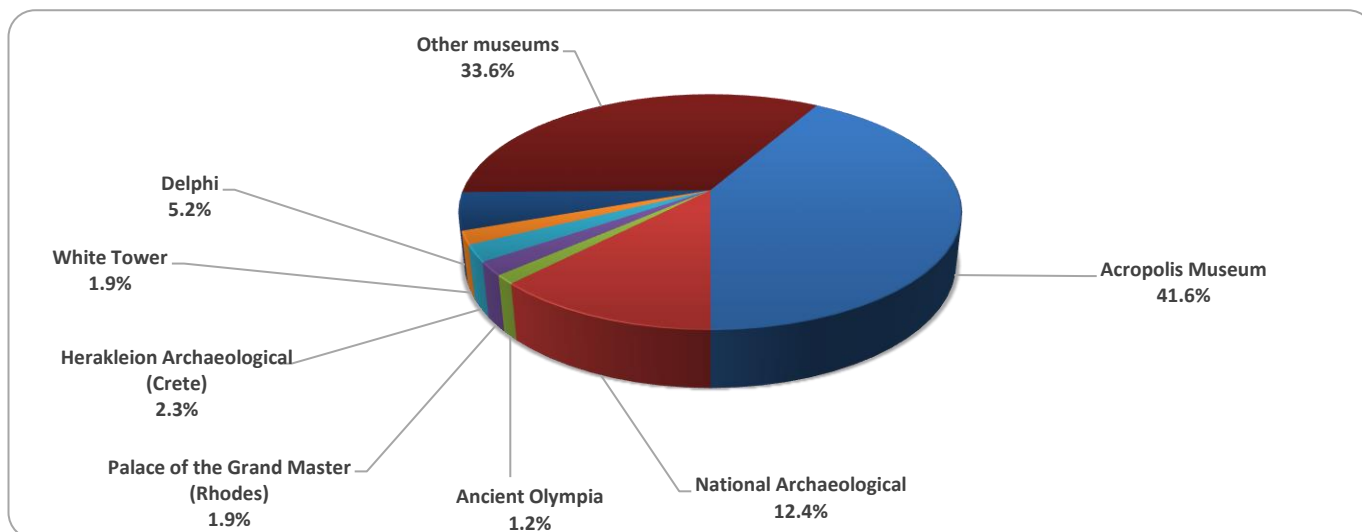
<sup>(1)</sup> Flat rate ticket, valid both for the museum and the archaeological site.

The following graphs depict the evolution of the receipts of Museums and Archaeological Sites (Graph 2), as well as the number of visitors by Museum (Graph 3) and by Archaeological Site (Graph 4).

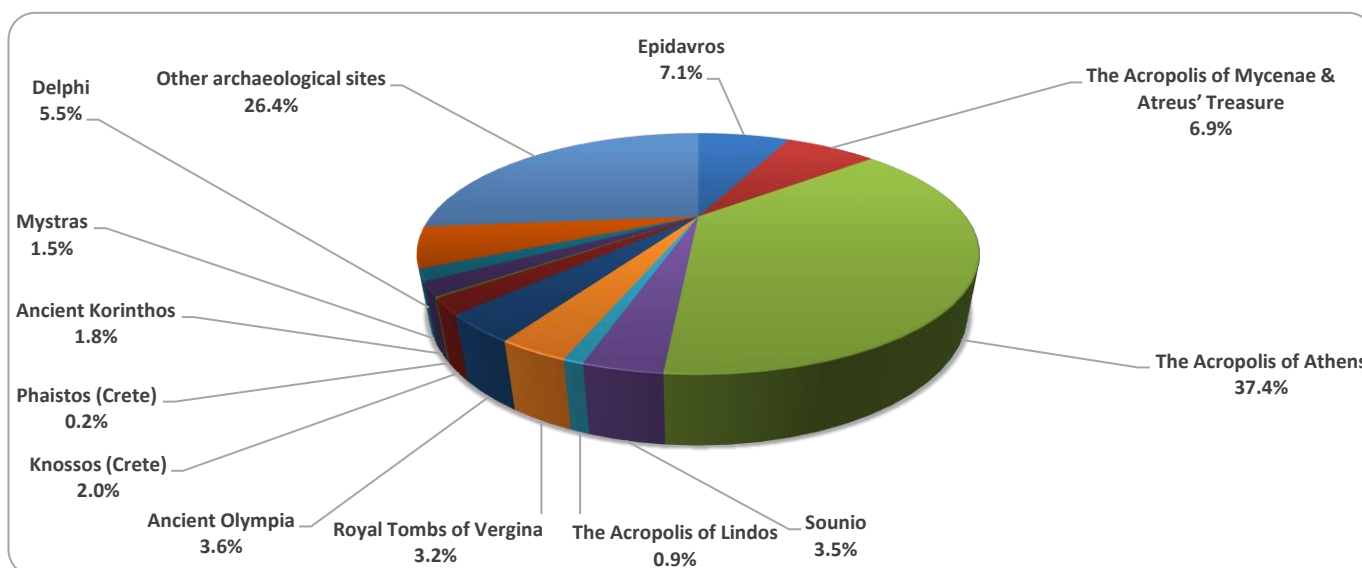
**Graph 2: Receipts from Museums and Archaeological Sites (January 2018 – March 2023)**  
(in thousand euro)



**Graph 3: Percentage distribution of visitors by Museum, March 2023**



**Graph 4: Percentage distribution of visitors by Archaeological site, March 2023**



**TABLE 2: VISITORS OF MUSEUMS AND ARCHAEOLOGICAL SITES - TOTAL RECEIPTS  
(2021, 2022, JANUARY - MARCH 2022, 2023)**

<b>I. VISITORS</b>					
Museums and Archaeological sites	2021 <sup>(2)</sup>	2022	JANUARY-MARCH		change 2023/2022
			2022	2023	
<b>Total number of visitors (A+B)</b>	<b>7,357,026</b>	<b>15,583,552</b>	<b>1,055,623</b>	<b>1,991,804</b>	<b>88.7%</b>
<b>A. Museums (C+E)</b>	<b>2,047,481</b>	<b>4,636,901</b>	<b>425,846</b>	<b>834,079</b>	<b>95.9%</b>
Acropolis Museum	547,908	1,397,353	126,449	313,994	148.3%
National Archaeological	189,208	474,821	41,192	98,569	139.3%
Ancient Olympia	34,367	85,179	6,295	6,803	8.1%
Palace of the Grand Master (Rhodes)	142,530	263,521	4,011	12,217	204.6%
Herakleion Archaeological (Crete)	127,574	249,715	7,065	17,729	150.9%
White Tower	77,983	193,916	16,358	28,603	74.9%
Delphi	58,102	151,512	15,233	35,551	133.4%
Other museums	869,809	1,820,884	209,243	320,613	53.2%
<b>B. Archaeological Sites (D+F)</b>	<b>5,309,545</b>	<b>10,946,651</b>	<b>629,777</b>	<b>1,157,725</b>	<b>83.8%</b>
Epidavros <sup>(1)</sup>	182,118	393,077	23,814	65,187	173.7%
The Acropolis of Mycenae & Atreus' Treasure	156,227	372,448	26,178	67,102	156.3%
The Acropolis of Athens	1,219,717	3,019,841	234,822	454,003	93.3%
Sounio	171,348	314,506	40,335	49,639	23.1%
The Acropolis of Lindos	349,418	596,331	1,952	6,864	251.6%
Royal Tombs of Vergina	56,790	168,444	13,794	36,528	164.8%
Ancient Olympia	143,549	338,365	13,580	33,238	144.8%
Knossos (Crete)	445,160	831,320	11,792	21,737	84.3%
Phaistos (Crete)	48,599	74,817	1,159	2,238	93.1%
Ancient Korinthos <sup>(1)</sup>	59,271	153,616	9,295	20,889	124.7%
Mystras <sup>(1)</sup>	78,762	139,512	9,899	15,531	56.9%
Delphi	146,061	332,870	29,178	62,759	115.1%
Other archaeological sites	2,252,525	4,211,504	213,979	322,010	50.5%
<b>II. VISITORS WHO PAID TICKET</b>					
	2021 <sup>(2)</sup>	2022	JANUARY-MARCH		change 2023/2022
			2022	2023	
<b>Total number of visitors who paid ticket (C+D)</b>	<b>5,090,418</b>	<b>10,877,516</b>	<b>570,765</b>	<b>1,052,900</b>	<b>84.5%</b>
C. Museums	1,289,896	2,883,216	211,145	385,578	82.6%
D. Archaeological sites	3,800,522	7,994,300	359,620	667,322	85.6%
<b>III. VISITORS WITH FREE ADMISSION TICKETS</b>					
	2021 <sup>(2)</sup>	2022	JANUARY-MARCH		change 2023/2022
			2022	2023	
<b>Total number of visitors with free admission ticket (E+F)</b>	<b>2,266,608</b>	<b>4,706,036</b>	<b>484,858</b>	<b>938,904</b>	<b>93.6%</b>
E. Museums	757,585	1,753,685	214,701	448,501	108.9%
F. Archaeological sites	1,509,023	2,952,351	270,157	490,403	81.5%
<b>IV. RECEIPTS (euros)</b>					
	2021 <sup>(2)</sup>	2022	JANUARY-MARCH		change 2023/2022
			2022	2023	
<b>Total Receipts (G+H)</b>	<b>54,735,194</b>	<b>121,535,113</b>	<b>4,090,213</b>	<b>8,796,903</b>	<b>115.1%</b>
G. Museums	10,385,644	23,361,465	1,113,812	2,726,710	144.8%
H. Archaeological sites	44,349,550	98,173,648	2,976,401	6,070,193	103.9%

<sup>(1)</sup> Flat rate ticket, valid both for the museum and the archaeological site.

<sup>(2)</sup> The operation of museums was suspended gradually from November 1<sup>st</sup> 2020 until May 13<sup>th</sup> 2021. The operation of archaeological sites was suspended from November 7<sup>th</sup> 2020 until March 21<sup>st</sup> 2021, in the framework of the preventative measures against the Covid-19 pandemic.

## EXPLANATORY NOTES

<b>Survey on Museums and Archaeological Sites Attendance</b>	<p>The Survey on Museums and Archaeological Sites Attendance has been producing results since 1970. The survey collects data from the Hellenic Organization of Cultural Resources Development (HOCRED), supervised by the Ministry of Culture and Sports, on the number of visitors and the receipts from the tickets sold in the Museums and Archaeological sites of the country. The corresponding data for the Acropolis Museum is available from December 2009 onwards.</p>
<b>Legal Framework</b>	<p>The survey is conducted since 1970 on a regular basis and it produces results on a monthly and yearly basis, in compliance with the Joint Ministerial Decision 15189/B379/73.</p>
<b>Reference Period</b>	<p>1/3/2023 - 31/3/2023</p>
<b>Methodology and Definitions</b>	<p>The survey is conducted on a monthly basis from data mainly collected from the Hellenic Organization of Cultural Resources Development (HOCRED), supervised by the Ministry of Culture and Sports, on the number of visitors and the receipts from the tickets sold in the Museums and Archaeological sites of the Country. ELSTAT tabulates and presents the data for the whole of the Country, by month and by year.</p> <p><b>Number of flat rate tickets:</b></p> <p>From April 1999 onwards, in some museums and the nearby archaeological sites, in addition to the ordinary ticket, a new “flat rate ticket” was established, which is valid for both the museum and the nearby archaeological site. The total number of these flat rate tickets for <b>March 2023</b> was <b>25,272</b></p>
<b>References</b>	<p>More information on the Survey on Museums and Archaeological Sites Attendance and detailed time series are available on: <a href="http://www.statistics.gr/en/statistics/-/publication/SCI21/">http://www.statistics.gr/en/statistics/-/publication/SCI21/</a></p>