



ISSUING OF MOTOR VEHICLE LICENSES: JULY 2024

The Hellenic Statistical Authority announces that in July 2024, 23,517 road motor cars (both new and used from abroad) were put into circulation for the first time, recording an increase 6.7% compared with the corresponding month of 2023 when the number of road motor cars was 22,044. In July 2023, a 7.8% increase had been observed in comparison with the corresponding month of 2022 (Table 1, Graphs 1,2,3,5). A total number of 13,212 new cars were put into circulation in July 2024 compared with 13,382 in July 2023, recording a decrease 1.3%.

The new motorcycles over 50cc (both new and used from abroad) that were put into circulation for the first time in July 2024 amounted to 11,212, against 8,461 in July 2023, thus recording a 32.5% increase. In July 2023, a 12.9% increase had been observed in comparison with the corresponding month of 2022 (Table 1, Graph 4). Out of the above motorcycles 10,750 were new, while the corresponding figure in July 2023 was 8,060, recording a 33.4% increase.

During the period January - July 2024, 157,319 road motor cars (both new and used from abroad) were put into circulation for the first time, representing an increase of 6.5% compared to the corresponding period of 2023 when the number of road motor cars was 147,735. During the period January - July 2023 an increase of 12.4% had been observed in comparison with the corresponding period of 2022 (Table 3, Graphs 6,7). Out of the above number of road motor cars that were put into circulation from January to July 2024 97,359 were new, while the corresponding number during the respective period of 2023 was 89,748, recording an increase of 8.5%.

During the period January - July 2024 the circulation of new motorcycles over 50cc (both new and used from abroad) amounted to 52,090 against 44,016 in the respective period of 2023, thus representing an 18.3% increase. An increase of 12.4% had been observed during the period January - July 2023 in comparison with the corresponding period of 2022 (Table 3, Graphs 6,7). A total number of 49,512 new motorcycles were put into circulation, from January to July 2024, compared with 41,667 during the corresponding period of 2023, recording an 18.8% increase.

Information on methodological issues:

Sectoral Statistics Division

Transport Statistics Section

Elpida Kleftogianni, Konstantinos Menexes

Tel: +30 213 135 3087, +30 213 135 3055

e-mail: e.kleftogianni@statistics.gr, k.menexes@statistics.gr

Information for data provision:

Tel: +30 213 135 2022

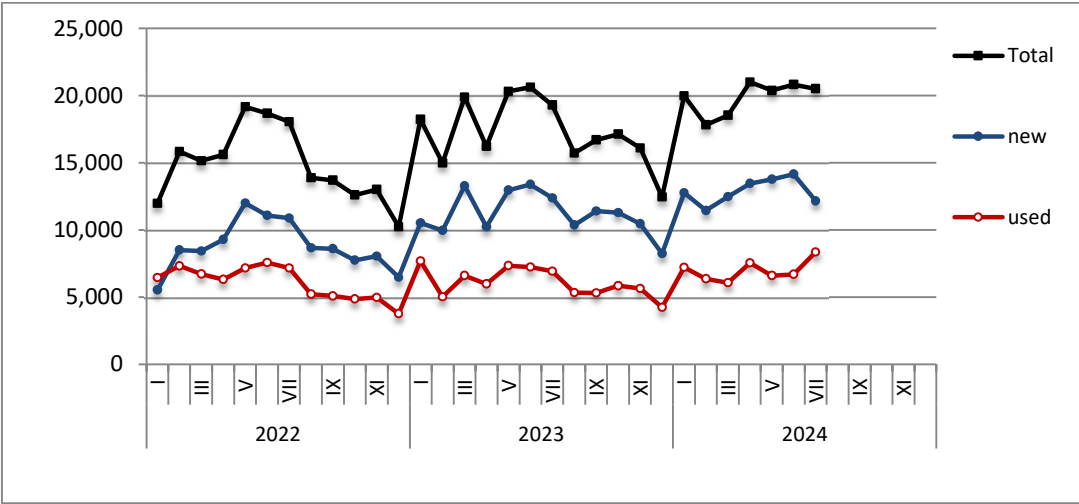
e-mail: data.dissem@statistics.gr

Table 1. Road motor vehicles, both new and used, put into circulation for the first time in Greece: July 2022 - 2024															
Category of Road Motor Vehicles	July									Change (%)					
	2022			2023			2024			2023/2022			2024/2023		
	Total	New	Used	Total	New	Used	Total	New	Used	Total	New	Used	Total	New	Used
Greece, total															
Road Motor Vehicles,total	27,947	18,708	9,239	30,505	21,442	9,063	34,729	23,962	10,767	9.2%	14.6%	-1.9%	13.8%	11.8%	18.8%
1. Road motor cars	20,456	11,706	8,750	22,044	13,382	8,662	23,517	13,212	10,305	7.8%	14.3%	-1.0%	6.7%	-1.3%	19.0%
Passenger Cars	18,046	10,875	7,171	19,295	12,380	6,915	20,506	12,154	8,352	6.9%	13.8%	-3.6%	6.3%	-1.8%	20.8%
Buses	101	24	77	92	25	67	119	39	80	-8.9%	4.2%	-13.0%	29.3%	56.0%	19.4%
Lorries	2,309	807	1,502	2,657	977	1,680	2,892	1,019	1,873	15.1%	21.1%	11.9%	8.8%	4.3%	11.5%
2. Motorcycles > 50 cc	7,491	7,002	489	8,461	8,060	401	11,212	10,750	462	12.9%	15.1%	-18.0%	32.5%	33.4%	15.2%
Prefecture of Attica															
Road Motor Vehicles,total	15,075	11,215	3,860	16,644	13,093	3,551	18,049	13,936	4,113	10.4%	16.7%	-8.0%	8.4%	6.4%	15.8%
1. Road motor cars	12,283	8,527	3,756	13,198	9,758	3,440	13,420	9,436	3,984	7.4%	14.4%	-8.4%	1.7%	-3.3%	15.8%
Passenger Cars	11,166	7,927	3,239	12,042	9,126	2,916	12,131	8,731	3,400	7.8%	15.1%	-10.0%	0.7%	-4.3%	16.6%
Buses	47	14	33	41	7	34	61	18	43	-12.8%	-50.0%	3.0%	48.8%	157.1%	26.5%
Lorries	1,070	586	484	1,115	625	490	1,228	687	541	4.2%	6.7%	1.2%	10.1%	9.9%	10.4%
2. Motorcycles > 50 cc*	2,792	2,688	104	3,446	3,335	111	4,629	4,500	129	23.4%	24.1%	6.7%	34.3%	34.9%	16.2%

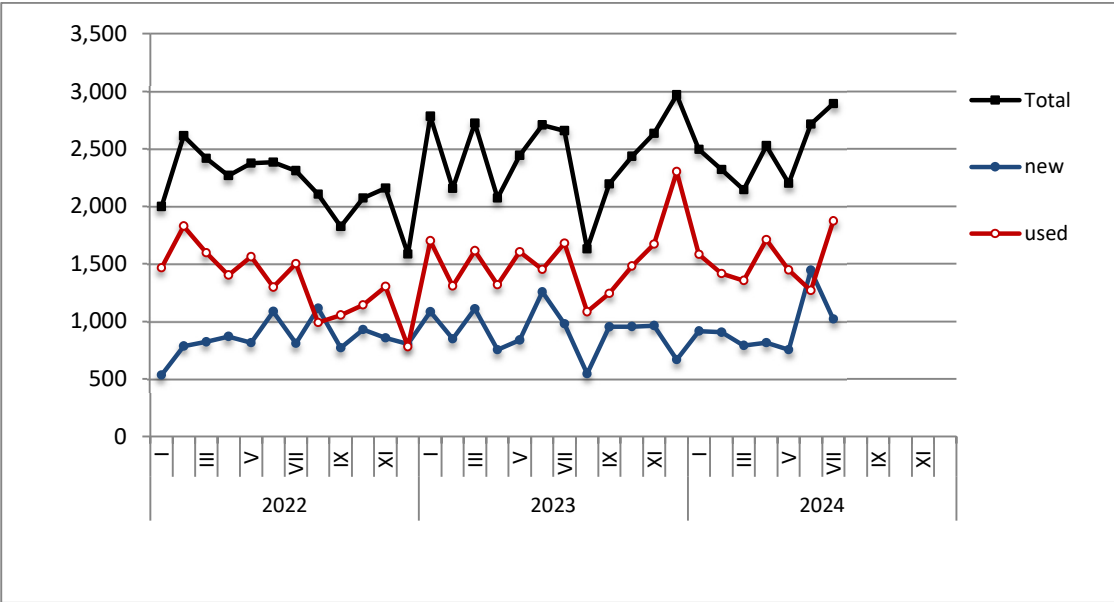
Table 2. Road motor vehicles, both new and used, put into circulation for the first time in Greece: August 2022 – July 2024

Category of Road Motor Vehicles	Average Aug. 2022 - Jul. 2023			Average Aug. 2023 - Jul. 2024			Change (%)		
							Average Aug. 2023 - Jul. 2024 / Average Aug. 2022 - Jul. 2023		
	Total	New	Used	Total	New	Used	Total	New	Used
Greece, total									
Road Motor Vehicles,total	23,844	16,250	7,594	27,100	18,911	8,189	13.7%	16.4%	7.8%
1. Road motor cars	18,449	11,156	7,293	20,642	12,773	7,869	11.9%	14.5%	7.9%
Passenger Cars	16,077	10,188	5,889	18,091	11,828	6,263	12.5%	16.1%	6.4%
Buses	99	23	76	122	52	70	23.2%	126.1%	-7.9%
Lorries	2,273	945	1,328	2,429	893	1,536	6.9%	-5.5%	15.7%
2. Motorcycles > 50 cc	5,395	5,094	301	6,458	6,138	320	19.7%	20.5%	6.3%

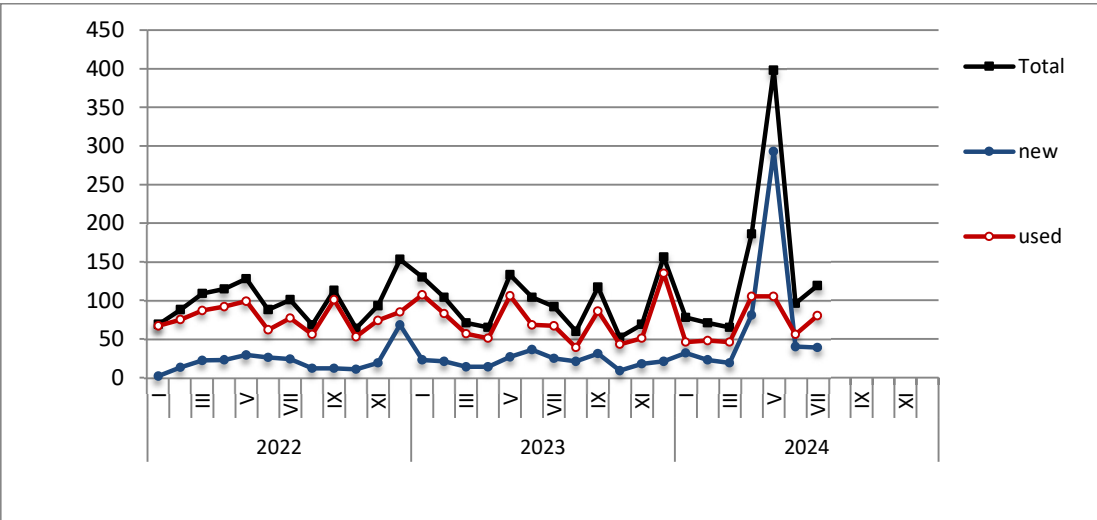
Graph 1: Passenger Cars (January 2022 – July 2024)



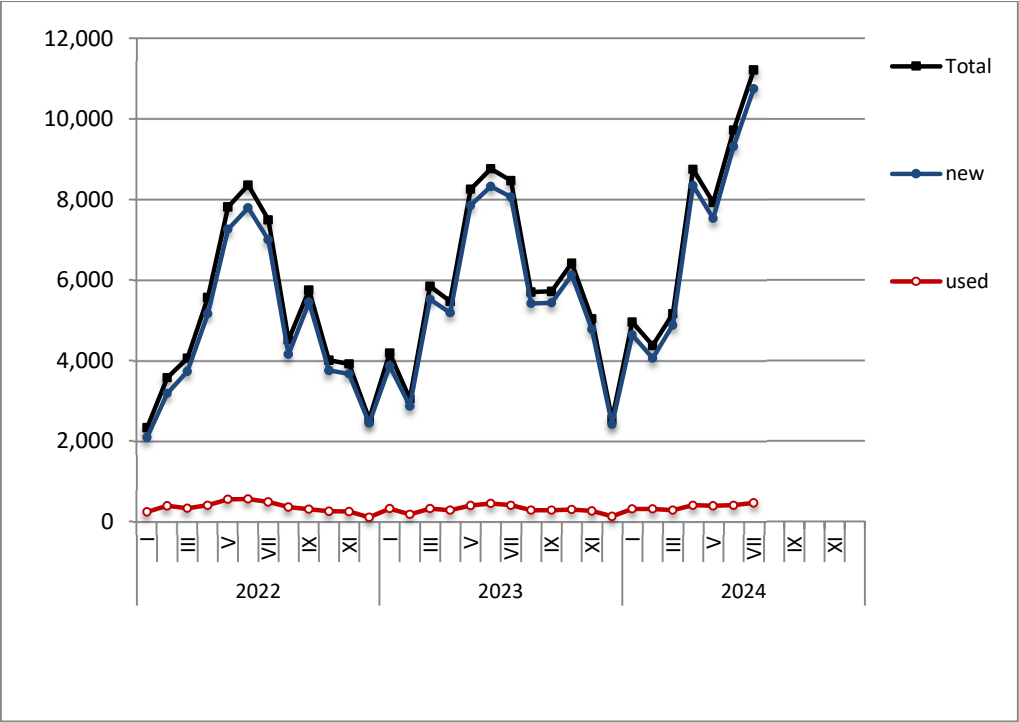
Graph 2: Lorries (January 2022 – July 2024)



Graph 3: Buses (January 2022 – July 2024)



Graph 4: Motorcycles (January 2022 – July 2024)



Graph 5: New Registrations of Motor Vehicles (July 2024)

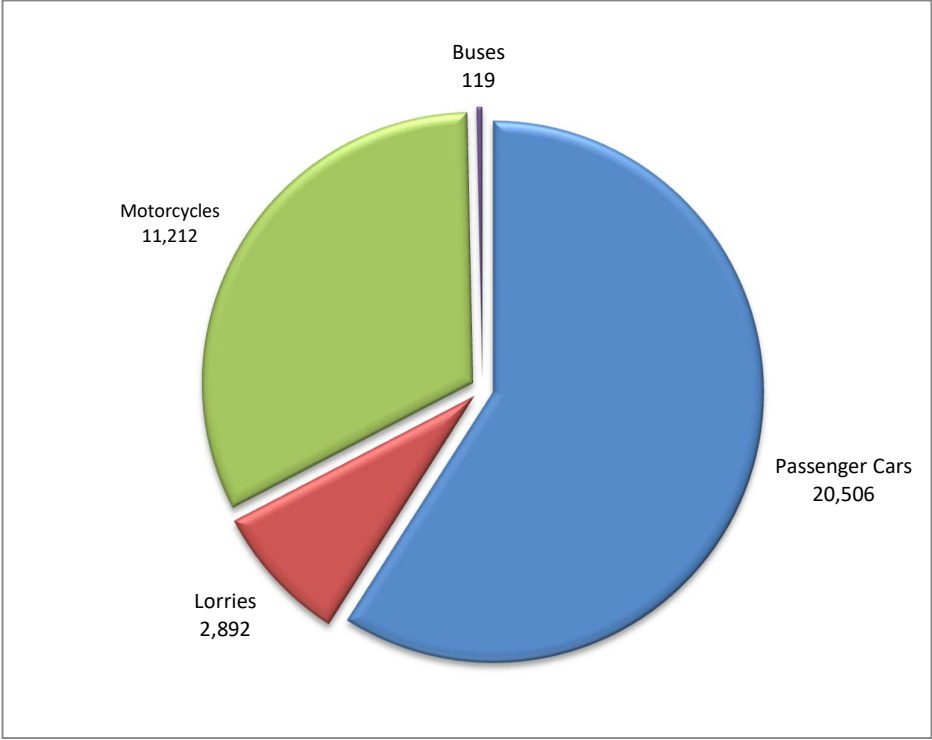
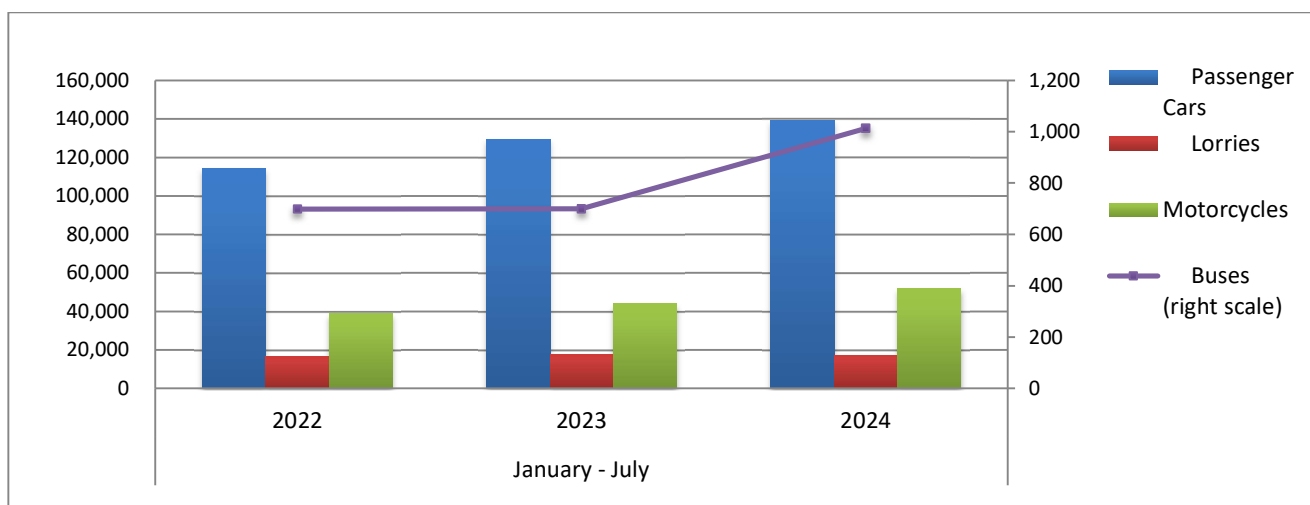


Table 3. Road motor vehicles, both new and used, put into circulation for the first time in Greece: January - July, years 2022 till 2024															
Category of Road Motor Vehicles	January - July									Change (%)					
	2022			2023			2024			2023/2022			2024/2023		
	Total	New	Used	Total	New	Used	Total	New	Used	Total	New	Used	Total	New	Used
Greece, total															
Road Motor Vehicles, total	170,653	107,752	62,901	191,751	131,415	60,336	209,409	146,871	62,538	12.4%	22.0%	-4.1%	9.2%	11.8%	3.6%
1. Road motor cars	131,476	71,541	59,935	147,735	89,748	57,987	157,319	97,359	59,960	12.4%	25.4%	-3.3%	6.5%	8.5%	3.4%
Passenger Cars	114,420	65,692	48,728	129,502	82,726	46,776	139,019	90,194	48,825	13.2%	25.9%	-4.0%	7.3%	9.0%	4.4%
Buses	698	139	559	699	160	539	1,013	527	486	0.1%	15.1%	-3.6%	44.9%	229.4%	-9.8%
Lorries	16,358	5,710	10,648	17,534	6,862	10,672	17,287	6,638	10,649	7.2%	20.2%	0.2%	-1.4%	-3.3%	-0.2%
2. Motorcycles > 50 cc	39,177	36,211	2,966	44,016	41,667	2,349	52,090	49,512	2,578	12.4%	15.1%	-20.8%	18.3%	18.8%	9.7%
Prefecture of Attica															
Road Motor Vehicles, total*	90,073	64,953	25,120	106,762	82,348	24,414	113,675	89,894	23,781	18.5%	26.8%	-2.8%	6.5%	9.2%	-2.6%
1. Road motor cars	73,011	48,678	24,333	87,082	63,362	23,720	90,253	67,132	23,121	19.3%	30.2%	-2.5%	3.6%	5.9%	-2.5%
Passenger Cars	65,787	44,829	20,958	79,263	58,865	20,398	82,899	62,903	19,996	20.5%	31.3%	-2.7%	4.6%	6.9%	-2.0%
Buses	277	64	213	343	93	250	561	324	237	23.8%	45.3%	17.4%	63.6%	248.4%	-5.2%
Lorries	6,947	3,785	3,162	7,476	4,404	3,072	6,793	3,905	2,888	7.6%	16.4%	-2.8%	-9.1%	-11.3%	-6.0%
2. Motorcycles > 50 cc*	17,062	16,275	787	19,680	18,986	694	23,422	22,762	660	15.3%	16.7%	-11.8%	19.0%	19.9%	-4.9%

* Data concerning motorcycles in the prefecture of Attica for June 2023 have been revised.

Graph 6. New Motor Vehicles Circulation Licenses: January – July, years 2022 till 2024



Graph 7. New Registrations of Motor Vehicles: January – July 2024

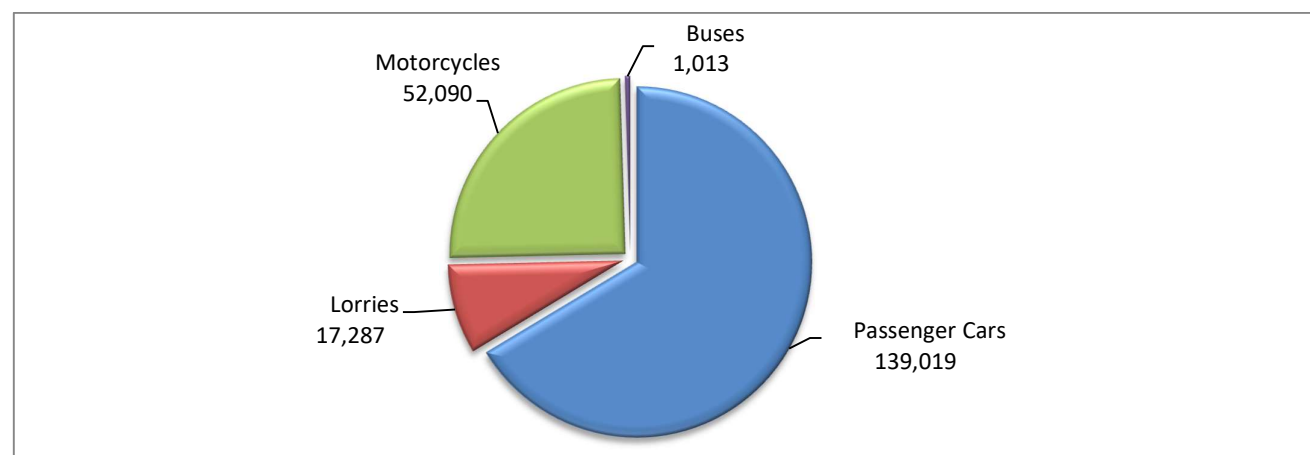


Table 4
Sales of new and used passenger cars by make: July 2024 and January - July 2024

Make	Passenger cars			
	July		January - July	
	new	used	new	used
ABARTH	-	1	3	2
ADRIA	1	-	1	3
ADRIA, SUN LIVING, ELIOS	-	-	3	-
ALFA ROMEO	16	40	173	262
ALPINA	1	-	2	1
ALPINE	-	1	-	2
AMBULANZ MOBILE	-	-	-	1
ASTON MARTIN	-	-	-	5
AUDI	449	127	2,756	929
BENTLEY	1	-	7	7
BMW	579	272	3,738	1,679
BURSTNER	-	-	-	10
BYD	131	-	196	-
CAPRON	-	2	15	9
CARTHAGO	-	-	1	-
CHEVROLET	-	15	1	87
CHRYSLER	-	1	-	1
CITROEN	346	361	2,077	1,903
CITROEN / DS	334	93	4,168	430
CUPRA	19	2	642	19
DACIA	181	199	1,571	1,143
DAIHATSU	-	-	-	6
DETHLEFFS	-	-	-	5
DFSK, SERES, SOKON, FENGON	6	-	13	-
DODGE	-	1	-	6
DS	62	19	372	79
E-GO	-	-	-	1
EURA MOBIL	-	-	1	1
FERRARI	-	1	1	10
FIAT	411	333	4,269	2,052
FORD	285	549	1,941	3,233
FORD ²	-	-	1	-
HOBBY	-	-	-	1
HONDA	46	66	233	390
HUMMER	-	-	-	1
HYMER	1	-	2	5
HYUNDAI	885	753	6,180	4,230
INEOS	-	-	-	1
INFINITI	-	22	-	61
IVECO S.p.a/LAIKA CARAVANS SpA	-	-	-	1
JAGUAR	11	22	62	145
JEEP	125	67	1,081	344
KABE	-	-	-	1
KERABOSS	-	-	3	-
KIA	594	157	3,163	982
KNAUS	-	-	-	5
KTM	-	1	-	1

Table 4 (cont)
Sales of new and used passenger cars by make: July 2024 and January - July 2024

Make	Passenger cars			
	July		January - July	
	new	used	new	used
LADA	-	-	-	3
LAMBORGHINI	-	-	1	10
LANCIA	-	5	-	16
LAND ROVER	55	62	367	434
LES DAUPHINS	-	-	-	1
LEXUS	44	7	200	37
LMC	-	1	-	1
LOTUS	2	1	5	2
LYNK&CO	-	2	19	4
MAN	-	-	-	1
MASERATI	3	4	11	20
MAXUS, LDV	-	-	4	-
MAZDA	212	30	1,259	181
MC LOUIS SPA	-	-	-	1
MCLAREN	-	-	-	2
MERCEDES	320	616	2,349	3,804
MERCEDES ¹	1	-	4	-
MG	19	3	137	6
MG, ROEWE	218	2	1,935	20
MINI	163	60	1,030	377
MITSUBISHI	56	109	323	666
MOBILVETTA DESIGN SpA	-	1	-	1
MORRIS	-	-	-	1
NISSAN	435	592	2,987	3,415
NISSAN ¹	-	-	9	-
OPEL	473	502	4,811	3,170
PEUGEOT	1,069	627	7,303	3,374
PEUGEOT ²	12	-	62	-
PORSCHE	23	51	149	337
RANGE ROVER	17	9	41	37
RENAULT	289	833	1,675	4,840
RENAULT ¹	-	-	1	-
RIMOR	-	1	-	2
ROLLER TEAM	-	-	3	1
SAAB	-	1	-	1
SEAT	107	70	1,076	410
SERES, DFSK, SOKON, AITO	1	-	13	-
SKODA	183	220	2,993	1,443
SMART	2	128	47	845
SSANGYONG	-	1	-	3
SUBARU	3	10	26	48
SUZUKI	940	182	7,437	998
TEC CARAVAN	-	-	-	1
TESLA	132	7	1,143	48
TOYOTA	2,309	730	15,390	3,912
TRIGANO	-	1	-	6
VOLKSWAGEN	327	343	3,691	2,105
VOLKSWAGEN ¹	-	-	1	-

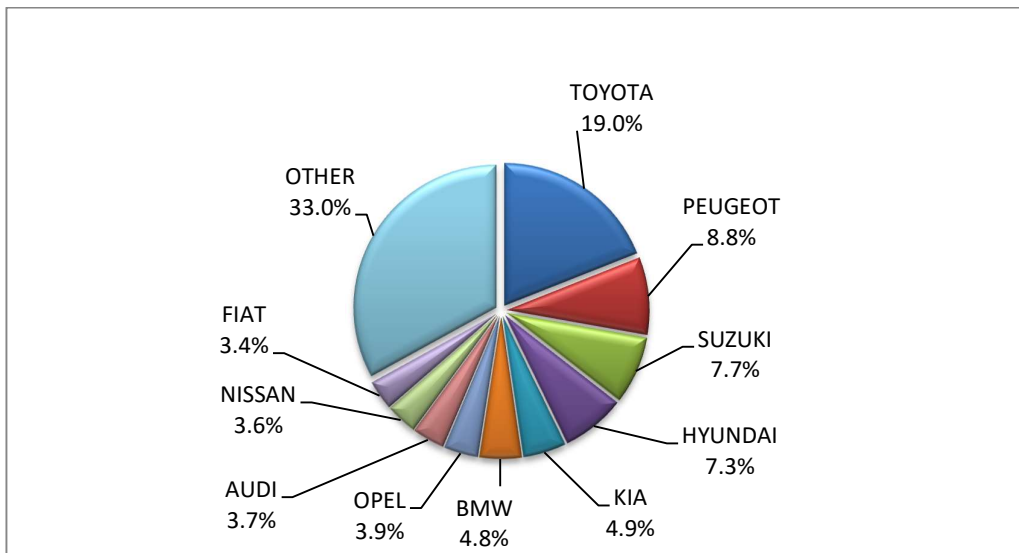
Table 4 (cont)
Sales of new and used passenger cars by make: July 2024 and January - July 2024

Make	Passenger cars			
	July		January - July	
	new	used	new	used
VOLVO	245	36	996	187
VOYAH	-	-	1	-
WESTFALIA	1	-	2	-
YODO, YUN	8	-	16	-
Z.MANTOS	1	-	1	-
TOTAL	12,154	8,352	90,194	48,825

1 : With 2nd/3rd stage manufacturer in Greece.

2 : With 2nd/3rd stage manufacturer abroad.

Graph 8. Sales of new passenger cars by make (July 2024)



Graph 9. Sales of new passenger cars by make (January – July 2024)

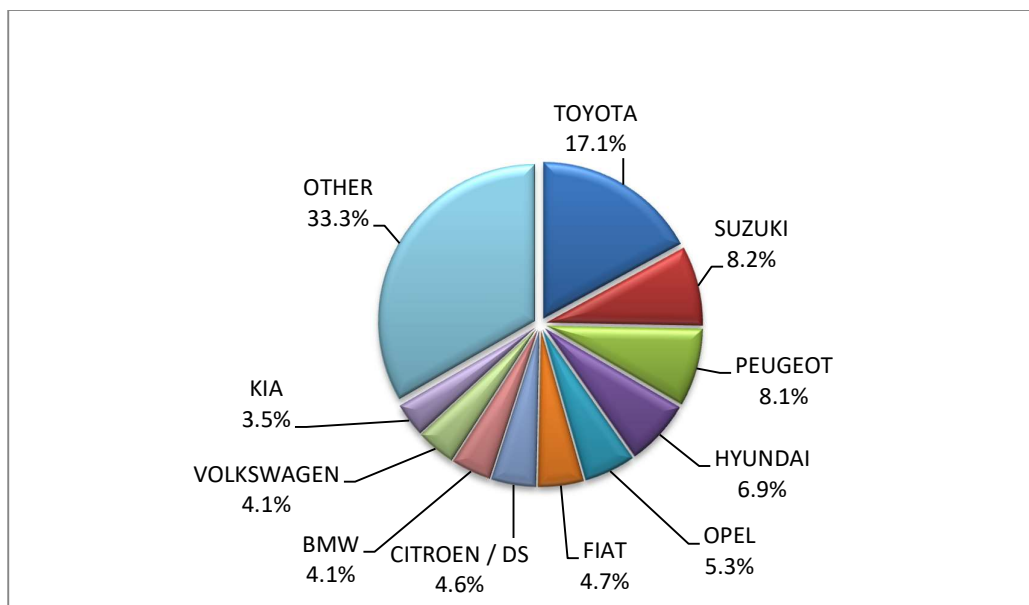


Table 5
Sales of new and used lorries by make: July 2024 and January - July 2024

Make	Lorries			
	July		January - July	
	new	used	new	used
ADDAX MOTORS, ISEKI, STAMA	-	-	2	3
ASTRA	-	-	-	1
BMC Otomotiv Sanayi ve Ticaret A.Ş. ¹	-	-	1	-
BMW	-	1	-	1
BYD	3	-	9	-
CENNTRO	-	-	2	-
CHEVROLET	-	1	-	3
CHRYSLER	-	-	-	3
CIFA	-	-	1	-
CITROEN	72	52	502	308
DACIA	-	6	2	55
DAF	-	39	5	210
DAF ¹	2	-	10	-
DAIHATSU	-	-	-	3
DENNIS EAGLE	-	1	-	2
DODGE	-	1	-	8
FARIZON AUTO	-	-	2	-
FCA US LLC	-	3	-	4
FIAT	100	119	539	791
FIAT DUCATO ¹	1	-	2	-
FIAT-IVECO	-	-	-	6
FORD	160	313	1,097	1,922
FORD ¹	6	-	19	-
FUSO	1	-	1	-
GOUPIL, MEGA, POLARIS, GEM	1	1	5	1
HYUNDAI	-	-	-	13
ISUZU	53	2	219	121
ISUZU ¹	-	-	1	-
IVECO	5	51	18	244
IVECO ¹	5	-	35	-
IVECO MAGIRUS	-	-	-	1
IZUZU	-	21	-	21
JEEP	-	2	12	9
KERSTNER	-	-	-	1
KIA	-	-	-	4
LAND ROVER	-	5	-	12
LEVC	-	-	2	-
MAGIRUS	-	-	-	1
MAN	-	123	3	588
MAN ¹	5	-	19	1
MAN ²	3	-	3	-
MAXUS, LDV	4	1	36	3
MAZDA	-	1	-	2
MERCEDES	44	479	168	2,695

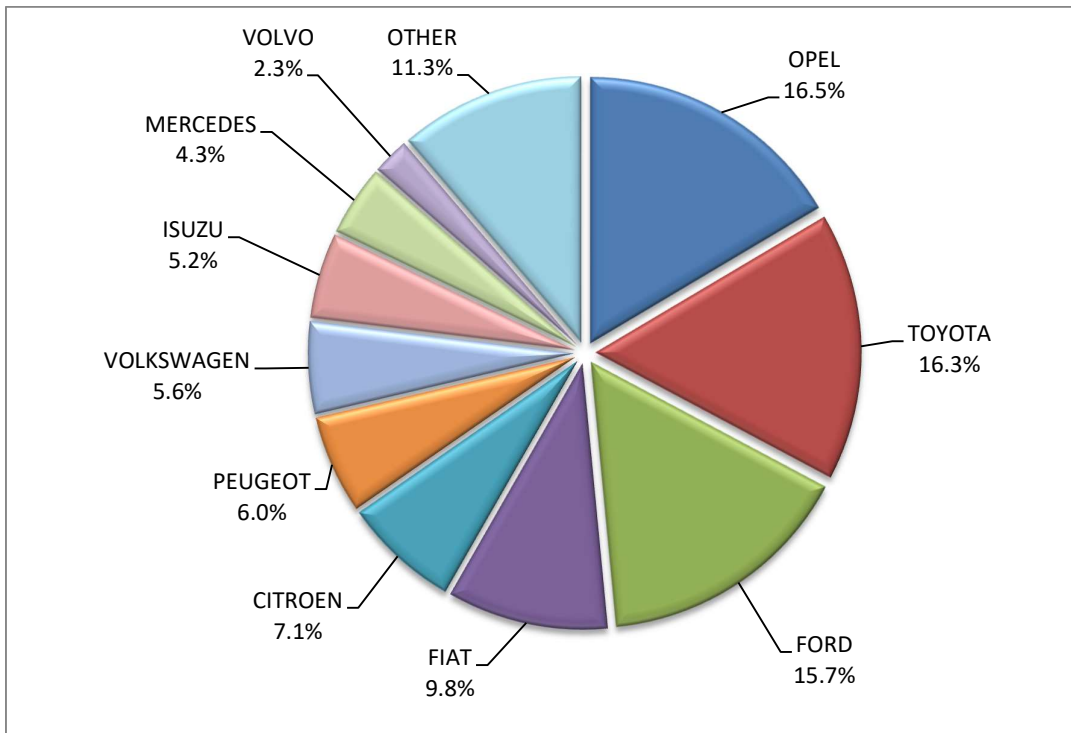
Table 5 (cont)
Sales of new and used lorries by make: July 2024 and January - July 2024

Make	Lorries			
	July		January - July	
	new	used	new	used
MERCEDES ¹	12	6	84	11
MERCEDES ²	-	-	2	1
MITSUBISHI	1	41	6	231
MITSUBISHI ¹	6	-	40	1
MITSUBISHI ²	2	1	4	4
MITSUBISHI FUSO	2	4	2	13
NISSAN	12	51	55	332
NISSAN ¹	-	-	6	-
NISSAN ²	-	-	-	1
OAF	-	-	-	1
OPEL	168	65	581	370
PEUGEOT	61	64	440	361
PEUGEOT ¹	-	-	1	-
PFAU	-	-	-	2
PIAGGIO	2	3	10	28
PIAGGIO ¹	-	-	5	-
PIAGGIO ²	2	-	7	2
RENAULT	22	115	214	741
SCANIA	-	65	20	297
SCANIA ¹	1	-	2	-
SEAT	-	-	-	1
SKODA	-	-	1	16
SOMMER GMBH	-	1	-	1
SPIER	-	-	-	2
SSANGYONG	-	1	-	2
STEYER	-	-	-	2
SUZUKI	11	1	121	1
TERBERG	-	1	-	1
TOYOTA	166	42	1,742	284
TOYOTA ¹	-	-	1	-
VOLKSWAGEN	57	73	427	431
VOLVO	23	117	102	470
VOLVO ¹	6	-	50	5
TOTAL	1,019	1,873	6,638	10,649

1 : With 2nd/3rd stage manufacturer in Greece.

2 : With 2nd/3rd stage manufacturer abroad.

Graph 10. Sales of new lorries by make (July 2024)



Graph 11. Sales of new lorries by make (January – July 2024)

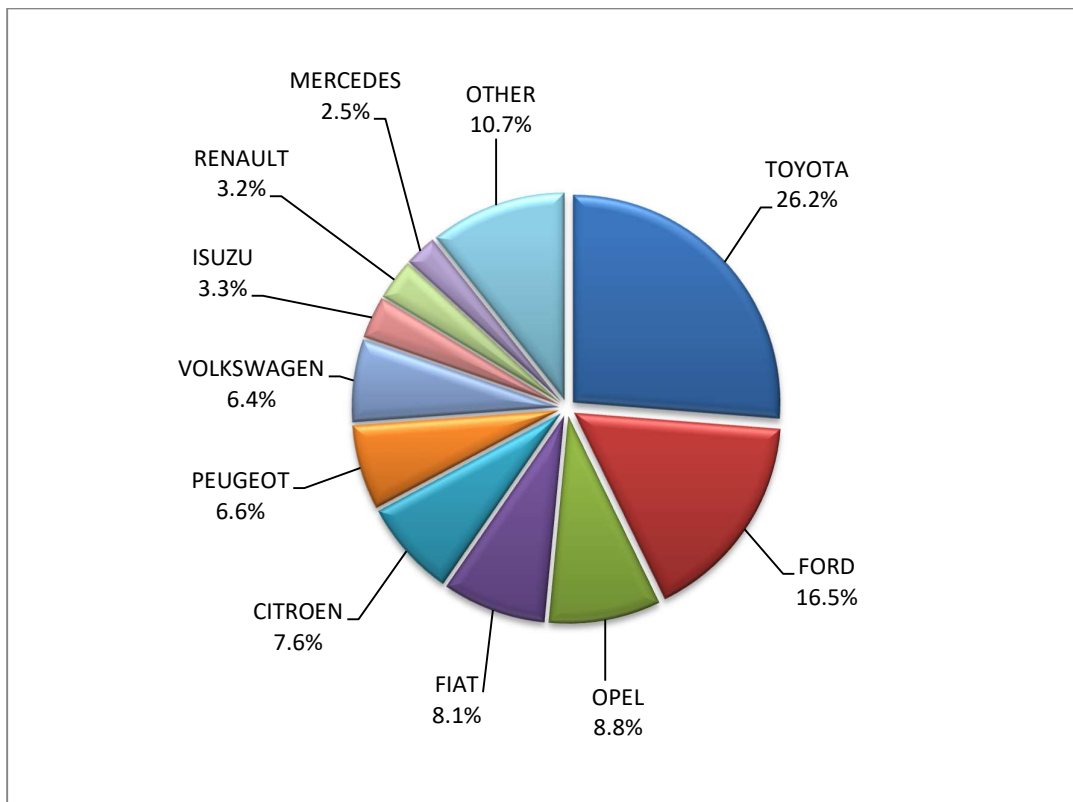


Table 6
Sales of new and used buses by make: July 2024 and January - July 2024

Make	Buses			
	July		January - July	
	new	used	new	used
AUTOBUZUL	5	-	11	-
BMC	-	-	-	1
BMW ²	1	-	1	-
BOVA	-	3	-	17
BYD	-	-	5	-
DAF	-	-	-	1
ERDUMAN	1	-	7	-
FIAT- IVECO	-	-	-	2
FORD	1	5	7	17
FORD ¹	1	-	1	-
IRISBUS	-	1	-	1
ISUZU	-	-	-	2
ISUZU, ANADOLU ISUZU, TURKUAZ, TURQUOISE, AIOS, AOS, GLOBUS	2	-	3	-
ISUZU, AOS, GLOBUS, AIOS	2	-	7	-
IVECO	-	-	1	3
IVECO ¹	2	-	2	-
IVEKO ²	-	-	1	-
KARSAN	-	-	5	-
KASSBOHRER	-	-	-	1
MAN	-	2	35	19
MAN/NEOPLAN	-	-	-	4
MERCEDES	1	49	12	334
MERCEDES ¹	18	-	144	-
MERCEDES ²	3	2	8	3
NEOPLAN	-	1	-	10
OTOKAR	1	-	2	3
RENAULT	-	1	-	4
SCANIA	-	-	-	3
SETRA	-	7	11	38
TAM-EUROPE D.O.O	-	-	5	-
TEMSA	-	3	8	7
TEMSA SKODA SABANCI	1	-	1	1
VDL	-	-	-	4
VOLKSWAGEN	-	1	-	2
VOLVO	-	2	-	4
XIAMEN KING LONG	-	3	-	5
YUTONG	-	-	250	-
TOTAL	39	80	527	486

1 : With 2nd/3rd stage manufacturer in Greece.

2 : With 2nd/3rd stage manufacturer abroad.

Graph 12. Sales of new buses by make (January – July 2024)

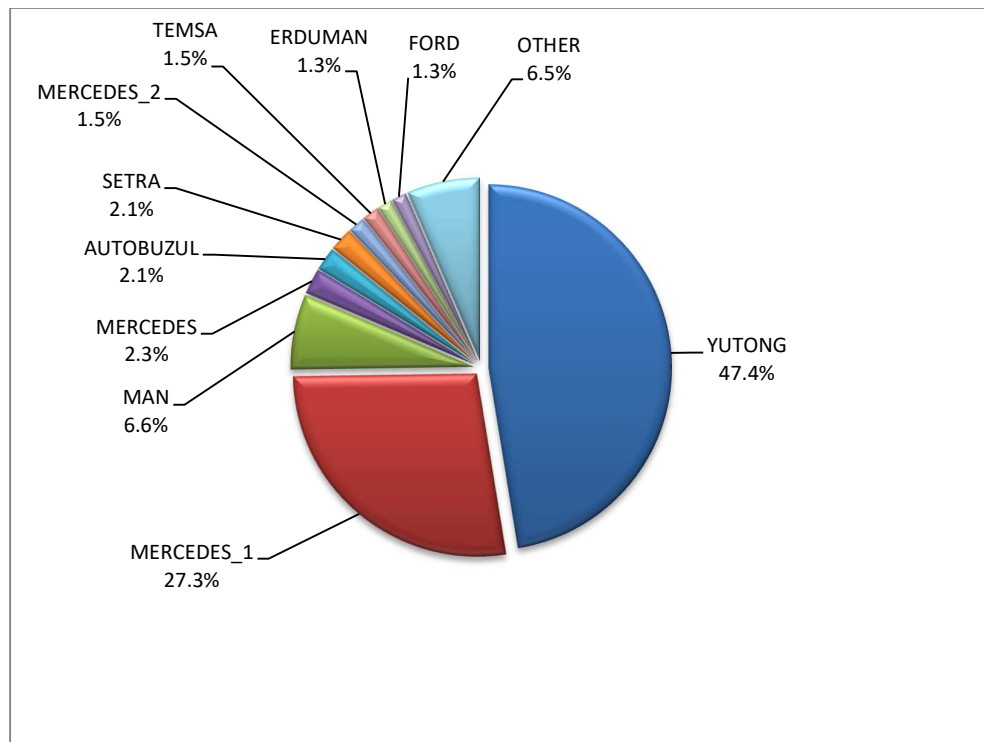


Table 7

Sales of new and used motorcycles by make or manufacturer: July 2024 and January - July 2024

Make	Motorcycles			
	July		January - July	
	new	used	new	used
AEON MOTOR	1	-	1	1
AJP	-	-	1	-
APRILIA	55	4	303	29
ARENA, ELYX, MIFUN, VMOTO	3	-	13	-
ARIIC, JINLANG	3	-	27	-
ARMONY, ARORA, BUKE, BULL MOTORS	8	-	37	-
ASUS, YUKI, RATO, DOCKER, MIGLIORI, VICTORY, AVETA	60	-	182	-
BAJAJ	5	-	35	-
BASHAN, AMGroup, AMGroup Bike, DON, IRBIS, WORKER BEAR, Nomik ATV 2	5	-	26	1
BAW, NIEVE, RELIVE	-	-	21	-
BELGARDA SPA	-	1	-	1
BENDA, KEEWAY, BDMOTO	1	-	3	-
BENELLI	111	1	670	7
BENZHO	-	1	-	1
BETA	9	-	83	6
BLUESHARK	1	-	1	-
BMW	108	53	716	239
BOMBARDIER RECREATIONAL PRODUCTS INC (BRP)	-	-	8	2
BRIXTON	9	-	63	2
BUELL	-	-	-	1

Table 7 (cont)

Sales of new and used motorcycles by make or manufacturer: July 2024 and January - July 2024

Make	Motorcycles			
	July		January - July	
	new	used	new	used
BUGGYCAR, HOLLYBEACH, ITALCAR	-	-	12	-
CF MOTO, CSR, QUAZILLA	-	-	-	1
CFMOTO	375	1	1,840	4
CFMOTO, KEEWAY	18	-	74	-
CFMOTO, WHITE KNUCKLE, MONDIAL, JUNAK	-	-	-	1
CFMOTO, ZEEHO	3	-	25	-
CHONGQING	-	-	-	1
DAELIM	-	1	-	2
DAYANG, DAYTONA MOTORS, NIPPONIA, DOCKER, WAYEL, SUMCO, VEEROAD, CETUR, RUTEC	2	-	5	-
DAYANG, DAYTONA MOTORS, NIPPONIA, DYMOTO, DOCKER, VEEROAD, EVO MOTORS, SUMCO, CETUR, HANSOM	-	-	4	-
DAYANG, DAYTONA MOTORS, NIPPONIA, DYMOTO, VEEROAD, EVO MOTORS, MH MOTORCYCLES, FKM, FKMOTORS,	15	-	105	-
DAYANG, DAYTONA MOTORS, NIPPONIA, KUBA, VEEROAD, SUMCO, CETUR, RUTEC	144	-	571	-
DAYANG, DAYTONA MOTORS, NIPPONIA, VEEROAD	19	-	218	-
DAYANG, DAYTONA MOTORS, NIPPONIA, VEEROAD, DOCKER	61	-	368	-
DAYANG, DAYTONA MOTORS, NIPPONIA, VEEROAD, RUTEC, CETUR	288	-	1,091	-
DAYANG, DYMOTO, DAYTONA MOTORS, NIPPONIA, MH MOTORCYCLES, ORCAL, SUMCO, KUBA, RKS, RUTEC	17	-	83	-
DAYANG, ECOCREMO, ECOOTER, ECOOTOR,AGM, ORCAL, SUMCO	4	-	12	-
DAYANG, NIPPONIA, DAYTONA MOTORS, VEEROAD, SUMCO, DOCKER, MH MOTORCYCLES	3	-	17	-
DAYANG, DAYTONA MOTORS, NIPPONIA, DOCKER, WAYEL, SUMCO, VEEROAD, CETUR, RUTEC, ZENKO	1	-	10	-
DAYTONA	1	-	26	-
DAYTONA MOTORS, DAYANG, DYMOTO, NIPPONIA, MH MOTORCYCLES, ORCAL, SUMCO, RUTEC, AJS	3	-	26	-
DAYTONA MOTORS, DAYANG, NIPPONIA, DYMOTO, DOCKER, VEEROAD, EVO MOTORS, SUMCO, CETUR, HANSOM, RUTEC	6	-	39	-
DAYTONA MOTORS, EVO MOTORS, LONGJIA, ORCAL, NECO, VGA, ROMET MOTORS, DRAX, MONDIAL, JUNAK, ONLINE	-	-	3	-
DAYTONA MOTORS, YINGANG, KUBA, RKS, SKYJET, MAGPOWER, MITT, VENTUR, ARCHIVE MOTORCYCLE	1	-	11	-
DAYTONA MOTORS, ZONTES, TAYO, KIDEN, Haojiang, ZHONGYU, Sharpon, TANNY, TYAN, Senke, B BETA	-	-	41	-
DERBI	-	-	-	2
DIVINE STAR&MOON, GSMOON	-	-	-	1
DMEMOTO, Elyx Smart, OPAI, DME	-	-	2	-
Dofern, Frison scooter, skootec, passion, Elektra EV, CJR	-	-	1	-
DONGBEN, GANCIN, DIRONG, KRAL	3	-	10	-
DOOHAN	-	-	1	-
DUCATI	22	6	142	56
E.F.O, GOLDEN LION, SAKURA, ARTISAN, Fauro, ETALIAN, BOLIDE, LINZE, DREEMS e-mobilities, BAiKU, AJS	1	-	2	-
E.F.O., GOLDEN LION, SAKURA, ARTISAN, Fauro, ETALIAN, Viverra, Varaneo, Kito, E-mio, velca, E-KUMA, BOLIDE	-	-	3	-
EAGLE	-	-	-	1
EASYCOOL, MITT, blu:s, Luxxon, ROMET	1	-	1	-
ECOOTER, ETRIX, AGM, DRAX, ORCAL, SUMCO	1	-	12	-
EFUN, ZAP	2	-	17	-
EFUN, ZAP, FRISON, easy-watts	8	-	42	-

Table 7 (cont)

Sales of new and used motorcycles by make or manufacturer: July 2024 and January - July 2024

Make	Motorcycles			
	July		January - July	
	new	used	new	used
EMBUGGY, EVANGEL, The Original BeachBuggy, Beach Buggy	6	-	52	-
FANGPOWER, Kontio Motors	7	-	14	-
FANTIC MOTOR	2	-	23	-
FD MOTORS, FASPIDER, Daytona Motors, EVO Motors, Veerod	-	-	8	-
FD MOTORS, FASPIDER, DAYTONA MOTORS, NIPPONIA, QUANTYA	4	-	15	-
FENGCHENG, FULLCHEER, Barman-pakro, NITSURO, VOLDORK, SPIMRI, Elektra EV, EKOe, BITMART	-	-	1	-
GASGAS	-	-	14	2
GENERIC, EXPLORER, MALANCA, KSR Moto Austria, Motron Motorrad	-	-	16	-
GENERIC, QJ, QIANG, EXPLORER, RIDE	-	-	-	1
GILERA	-	-	-	1
GOCCIA, E-ZI, AGM, SFM, VGA, SACHS, SAXXX, KEEWAY, Vengo, Viarelli, EZI, E ZI	1	-	4	-
GOLDEN LION, SAKURA, ARTISAN, ETALIAN, E-mio, Fauro, Kito, Varaneo, Virerra, E.F.O., BOLIDE, E-KUMA, velca	3	-	6	-
GOUPIL	-	-	1	-
GPX	13	-	83	-
GUSITE, RKS, KUBA, KOKO, KAVIR, BECANE, EVO MOTORS, Daytona MOTORS, SUMCO, SKYJET	34	-	131	-
Haojiang, ZONTES, TAYO, Sharpon, IFINO, KIDEN, ZHONGYU, CUBTOM, DIYUN, NAMIN, TIM DERVI, VUKA, THUMP, R-ipper	2	-	32	-
HAOJIN, KUBA, RKS, SKYJET, LETBE	1	-	1	-
HAOJIN, LETBE, KUBA, RKS, SKYJET	19	-	34	-
HARLEY DAVIDSON	3	25	14	125
HONDA	1,751	81	8,257	420
HOOOON, PICKMAN	-	-	1	-
HORWIN	3	-	10	-
HSUN, CROWN, YAMOTO, TOMOTO, DORTO	-	-	-	1
HSUN, HISUN, APACHI, Mx, MASAI, HYTRACK, TRAPPER, PUMAREX, ASYAMOTOR, DAYTONA MOTORS, GEON, KRAL	-	-	1	-
HUSQVARNA	17	4	77	38
HYOSUNG	-	-	1	1
IIFSTEV, IIFSTMUTO	-	-	6	-
INDIAN MOTORCYCLE	1	-	12	1
ITALJET	-	-	6	1
JCADI, TILGREEN, Grupo Invicta MOTOR, e-broh, FAURO	2	-	2	-
JIAYUAN	10	-	48	-
JINMA, RUNHORSE, FARAD, hopster, DuroCar	-	-	1	-
JNEN, JUNENG, ZIPP, MOTORAN, HORS	3	-	25	-
JNEN, JUNENG, ZIPP, MOTORAN, HORS, FLEX TECH, RAZZO, TOROS, ONE, JUNAK	8	-	58	-
JNEN, JUNENG, ZIPP, MOTORAN, ONE, RAZZO, FLEX TECH, TOROS, JUNAK, TURBHO, PEZAL, ALPHA-MOBIL	34	-	191	-
JONWAY, DAYTONA MOTORS, EVO MOTORS	-	-	2	-
JONWAY, SHENKE, HUIBANG, JMSTA	-	-	2	-
KAMAX	-	-	1	-
KAWASAKI	23	16	145	74
KEEWAY	5	-	17	1
KEEWAY, KUBA	4	-	29	-
KEEWAY, LONGJIA	31	-	132	-
KSR MOTO AUSTRIA, MOTRON MOTORRAD	5	-	20	-
KTM	51	25	365	168
KUBA, MH MOTORCYCLES, MGB, SHINERAY, Daytona Motors, MASH	3	-	30	-

Table 7 (cont)

Sales of new and used motorcycles by make or manufacturer: July 2024 and January - July 2024

Make	Motorcycles			
	July		January - July	
	new	used	new	used
KUBA, RKS, SKYJET, LETBE	1	-	1	-
KWANG YANG	-	-	-	1
KYMCO	517	55	1,962	275
LAMBRETTA	1	-	1	-
LETBE, RKS	2	-	2	-
LEXMOTO	-	-	-	1
LIFAN, HONLEI, QIPAI, SKYGO, GTS, PINK, Daytona MOTORS	1	-	2	-
LIFAN, QIPAI, SKYGO, TAKTAS, TAKTAS MOTOR	4	-	4	-
LIGIER	-	-	-	1
Lingzhida, LINZDA, LINDN, LINYI, LONGMAO, NLIGHT	2	-	7	-
LINHAI, LHY, KUBA, ONLINE	2	-	16	-
LOJO, RAINWOLL	2	-	14	-
LOJO, SUNPULSE, YGM	-	-	2	-
LONCIN, KINLON, LONGTING, KUBA, YUKI, MONDIAL, STMAX, KANUNI, MOTORAN, ASYA, QUSWA, PUMAREX, RALLY USA, MOD, CCM	26	-	87	-
LONCIN, KUBA, RKS, ITALIKA, SUNRACE, SKY, MALAGUTI, SUPERBIKE, ROCKET, NOVELBAT, TIGREMOTO, GREEN	1	-	5	1
LONCIN, KUBA, RKS, ITALIKA, VOGUE, SUNRACE, SKY, MALAGUTI, ROCKET, SUPERBIKE, NOVELBAT, TRIDIAMOND	67	-	235	1
LONCIN, VOGUE	17	-	62	1
LONCIN, VOGUE, KUBA, RKS, ITALIKA, SUNRACE, SKY, MALAGUTI, SUPERBIKE, ROCKET, NOVELBAT, TIGREMOTO, GREEN	1	-	10	1
LONCIN, VOGUE, VOGUEPRO	148	-	604	-
LONGJIA, ITALJET, ORCAL, BEELINE, ROMET MOTORS, GEMINI, LEXMOTO, JAHANRO, VGA, DAYTONA MOTORS	-	-	1	-
LONGJIA, ORCAL, NECO, ALFASCOOTERS, VGA, ROMET MOTORS, BARTON MOTORS, OVER, CAROLYN, KANUNI, BTC	32	-	223	-
LONGJIA, ORCAL, NECO, ALFASCOOTERS, VGA, ROMET MOTORS, BARTON MOTORS, OVER, CAROLYN, KANUNI, BTC	18	1	31	3
LONGJIA, ORCAL, NECO, VGA, Gemini	1	-	1	-
LONGJIA, ORCAL, NECO, VGA, ROMET MOTORS	28	-	160	-
LONGJIA, ORCAL, NECO, VGA, ROMET MOTORS, DRAX, MONDIAL, JUNAK	-	-	1	-
LONGJIA, ORCAL, NECO, VGA, ROMET MOTORS, ROUTER, lexmoto, Gemini, MH, motorcycles	-	-	1	-
LONGJIA, VICTORIA, VICTORIA MOTORRAD, ORCAL, NECO, VGA, BTC, ALFASCOOTERS, ROMET MOTORS	106	-	343	-
LONGJIA, Zündapp, VGA, NECO, BTC, AGM, ALFASCOOTERS, ROMET MOTORS, Kudaki, BARTON MOTORS, OVER BIKES	47	-	162	-
LUQI, TWISTER WHEEL, SPYDER WHEELZ, DJJD, GTS, TEKUON, Eway, Emoto, Bikers, i-coco	-	-	1	-
LVNENG	2	-	12	-
LONGJIA, ZUNDAPP, VGA, NECO, BTC, ALFASCOOTERS, ROMET MOTORS	1	-	11	-
MACBOR, RVM, COLOVE, DAYTONA MOTORS, ZF-KY, online, KOVE	52	-	135	-
MACBOR, RVM, COLOVE, ORCAL, DAYTONA MOTORS, ZF-KY, Lexmoto, OVER BIKES, YUKI, AJS	-	-	22	-
MALAGUTI	75	1	319	4
MBK	-	1	-	5
MBP, Morbidelli, KEEWAY, KUBA, RKS	4	-	11	-
MELEX	2	-	6	-
MGK HM	278	-	1,269	1
MICRO	14	-	40	-

Table 7 (cont)

Sales of new and used motorcycles by make or manufacturer: July 2024 and January - July 2024

Make	Motorcycles			
	July		January - July	
	new	used	new	used
MILG	1	-	4	-
MODENAS	-	-	-	1
MONTESA	-	-	3	1
MORBIDELLI, KEEWAY, MBP, RKS	-	-	1	-
MOTO GUZZI	14	2	78	7
MOTO MORINI	1	-	17	-
MOTRON MOTORRAD, ZONGSHEN	3	-	11	-
MV AGUSTA	1	-	1	1
NACIONAL MOTOR SAU	-	-	-	1
NERVA	1	-	4	-
NEWBOT	-	-	1	-
NIU, NUUV	1	-	10	-
ODES	10	-	56	-
OPAI	1	-	3	-
ORCAL, SOMOTO, AIS, SENKE, HERALD, ITALJET, WACCO, MOTOBİ, CLEVELAND CYCLEWERKS ACE, MERCURY, SAXXX, SFM	1	-	2	1
PAOLETTI RACING	-	-	-	1
PEUGEOT	27	1	229	8
PIAGGIO	1,480	49	6,415	247
PILOT CAR	2	-	8	-
POLARIS	19	-	68	5
PONY, BAW 1, BAW 2, BAW 3, N1, N2, Allview	-	-	10	-
POWERLAND	1	-	10	-
QINGQI	-	-	-	1
QINGQI, CLEVELAND, CYCLEWERKS ACE, CLEVELAND ACE, CLEVELAND CYCLEWERKS ACE DELUXE	-	-	-	1
QJ, QJIANG, KEEWAY, LEONE, RKS, BENELLI, EMPIRE KEEWAY, KUBA	-	-	2	2
QJ, QJIANG, QJMOTOR, B MOTOBİ	37	-	298	-
QJ, QJIANG, QJMOTOR, B MOTOBİ, QJTEC	80	-	243	-
QJ, QJIANG, QJMOTOR, B MOTOBİ, QJTEC, LIFAN, GTS, DAYTONA MOTORS, SIMONINI MOTO, PINK, RKS	16	-	16	-
QJIANG	-	-	-	1
RAY ELECTRIC MOTORS	-	-	1	-
REDMOTO	-	-	3	-
REGIS	-	-	-	1
RENAULT	-	-	-	1
RENLI	17	-	80	-
RIEJU, DRAC	-	-	5	1
RIVERO	-	1	-	1
RIYA, RYMOTO, KUBA, RKS, LEXMOTO, MITT, ALPHA MOTORS, IMF, ROMET, ZIPP, ARORA, ZORRO, MOJITO	22	-	40	-
ROYAL ENFIELD	56	-	262	2
Royalloy, Royal Alloy, RA	2	-	9	-
Royalloy,Royal Alloy,RA,SCOMADI,VALENTINO,VALENTINO MOTORI	-	-	-	1
SAKURA, GOLDEN LION, ARTISAN, Fauro, ETALIAN, Viverra, Varaneo, Kito	-	-	26	-
SAKURA, GOLDEN LION, ARTISAN, Fauro, ETALIAN, Viverra, Varaneo, Kito, E-mio, velca, E.F.O, E-KUMA, BOLIDE, LINZE	2	-	11	-
SCUTUM, ETRIX, SILENCE	4	-	14	-
SEGWAY	9	-	185	-
SHANYANG, ATLAS PANTHER, YAMAZUKI MOTO, MOTORKING, Hirlee, XB	1	1	7	1
SHERCO	-	-	12	10

Table 7 (cont)

Sales of new and used motorcycles by make or manufacturer: July 2024 and January - July 2024

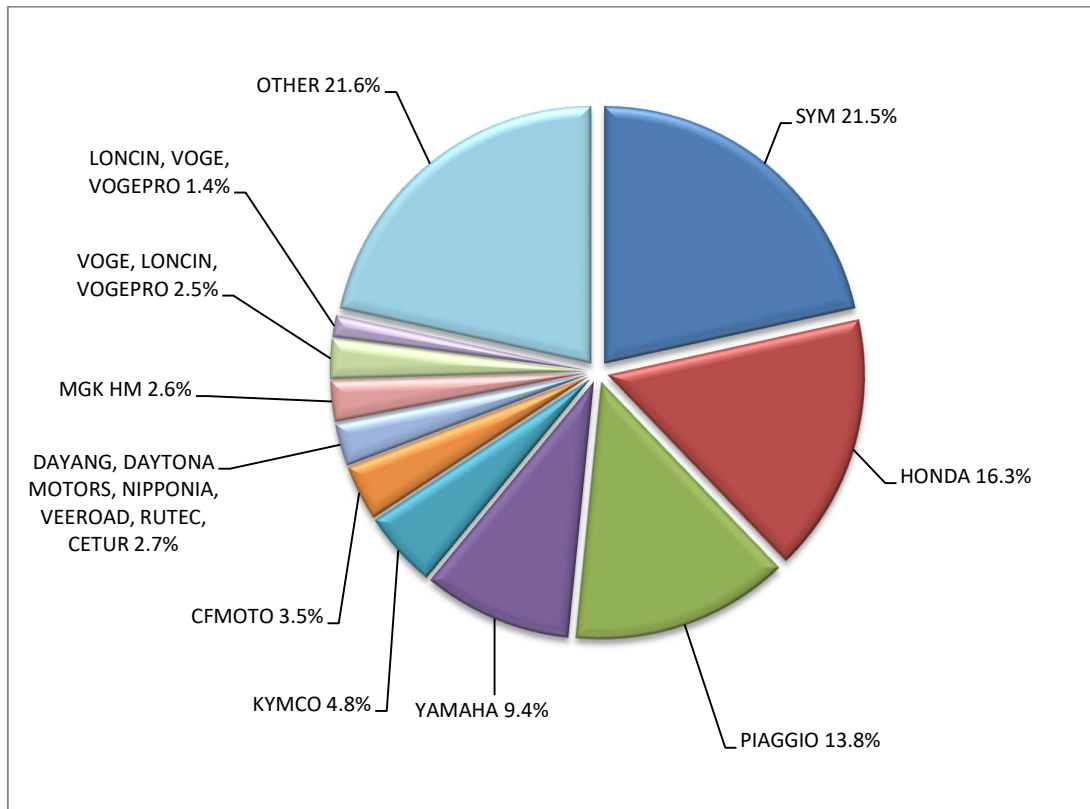
Make	Motorcycles			
	July		January - July	
	new	used	new	used
SHINERAY, SWM	-	-	5	1
SILENCE, SCUTUM, ETRIX	17	-	65	-
SKYTEAM, SACIN, CSR, METALCO, SOKUDO, BAZUKA, MINICO, MOTOSBASI, MOTOS BORDOY, SUMKO, ROXON, MONKEY BIKES	6	-	16	1
SURRON	-	-	5	-
SUZUKI	62	20	426	132
SYM	2,315	14	10,282	101
TARO, JUNAK, BARTON MOTORS ,ORCAL, Lexmoto	26	-	134	-
TARO, JUNAK, BARTON MOTORS, ORCAL, Lexmoto, MITT, NECO, WOTTAN, MAGPOWER, ADAMOTO MOTORCYCLES	6	-	49	-
TARO, JUNAK, BARTON MOTORS, ORCAL, Lexmoto, MITT, NECO, WOTTAN, MAGPOWER, ADAMOTO, MAXON, MAX-ON, TRMOTOR, CHUANL	8	-	33	-
TARO, TRMOTOR, CHUANL, JUNAK, BARTON MOTORS, Lexmoto, MITT, NECO, WOTTAN MOTOR, Maxon, Max-on, MOTOB, MOTO B, MAGPOWER, ADAMOTO MOTORCYCLES	8	-	46	-
TARO, TRMOTOR, CHUANL, JUNAK, Lexmoto, BARTON MOTORS, MITT, NECO, MAXON, WOTTAN MOTOR, MAX-ON, MOTOB, MOTO B	19	-	99	-
TAURIS	-	-	-	1
TAYO, HAOJIANG, ZHONGYU, THUMP, THUMPSTAR, KIDEN, ZONTES, Junak	2	1	33	2
TAYO, HAOJIANG, ZHONGYU, THUMP, THUMPSTAR, KIDEN, ZONTES, Junak, SENKE, TANNY, TYAN, ROMET, ROMET MOTORS, ROUTER	4	-	42	-
TAYO, ZONTES, KIDEN, Haojiang, ZHONGYU, Sharpon, TANNY, TYAN, Senke, B BETA, Daytona Motors	79	-	489	1
TAZZARI	-	-	1	-
TEYIN, TIANYING, XINBEN, SANBEN, ALFASCOOTERS, Alpha Motors, APACHI	14	-	35	-
TGB	5	-	7	1
TIANYING, RIYA, HONGYUNDA, TYM, HONLING, SANBEN, XINBEN, TAMCO, ALISON, DMK MOTORS	3	-	18	-
TIANYING, RIYA, HONGYUNDA, TYM, SANBEN, XINBEN, TAMCO, ALISON, DMK MOTORS, WLIE, LEEWAY, WLXQ	-	-	12	-
TIANYING, RIYA, HONGYUNDA, TYM, HONLING, TAMCO, ALISON, DMK MOTORS, WLIE, LEEWAY, WLXQ, AP Gmoto, ALFA	1	-	3	-
TIANYING, RIYA, SANBEN, TEYIN, TYM, Alfascooters, JORDON, YUKI, YAMASAKI, IVA, SENZO, KillerBee	4	-	11	-
TIANYING, RIYA, SANBEN, TEYIN, TYM, BERMOTO, Capirelli, Gemini, KENTOYA, LGW MOTO, Masaru, Romet, VENTO	-	-	2	-
TINBOT, KOLLTER, MASAI, INTO, VIARELLI, EDRIVE, DuroCar, MGK HM, Fauro, BRINCO	-	-	4	-
TINBOT, KOLLTER, MASAI, MS ENERGY	-	-	2	-
TM RACING	-	-	3	-
TRIUMPH	53	4	361	13
TRIUNI, TRIGOBIKE, LUCKING-MOPED, CSE-EV, JSE-MOTO, RETELLI, BIKEMITE, MOBI-E, U-MOB, VELCAMOTOR, DUKKA, LUYING	2	-	2	-
UM	46	-	126	-
VELIMOTOR, VOLTAMP, ALTUX, KKL HITECH, WHEELN WATER TECH, ALTUS, NUVEAU MONDE, EN MOTO, YOUNBEE MOTORS, KKL	-	-	4	-
VELOCIFERO, CECOTEC	-	-	1	-
Victory Motorcycles Division, Polaris Industries Inc.	-	-	-	1
VMOTO-SOCO, E-MAX, VMOTO, SUPER SOCO	3	-	29	-
VOGE, LONCIN, VOGEPRO	271	-	1,177	-
VOLTA, CHAOYA, EASY-WATTS, LUIGI, VELCA, Pineapple Bikes	2	-	2	-
VOLTA, VTA, REVOLT	2	-	6	-

Table 7 (cont)

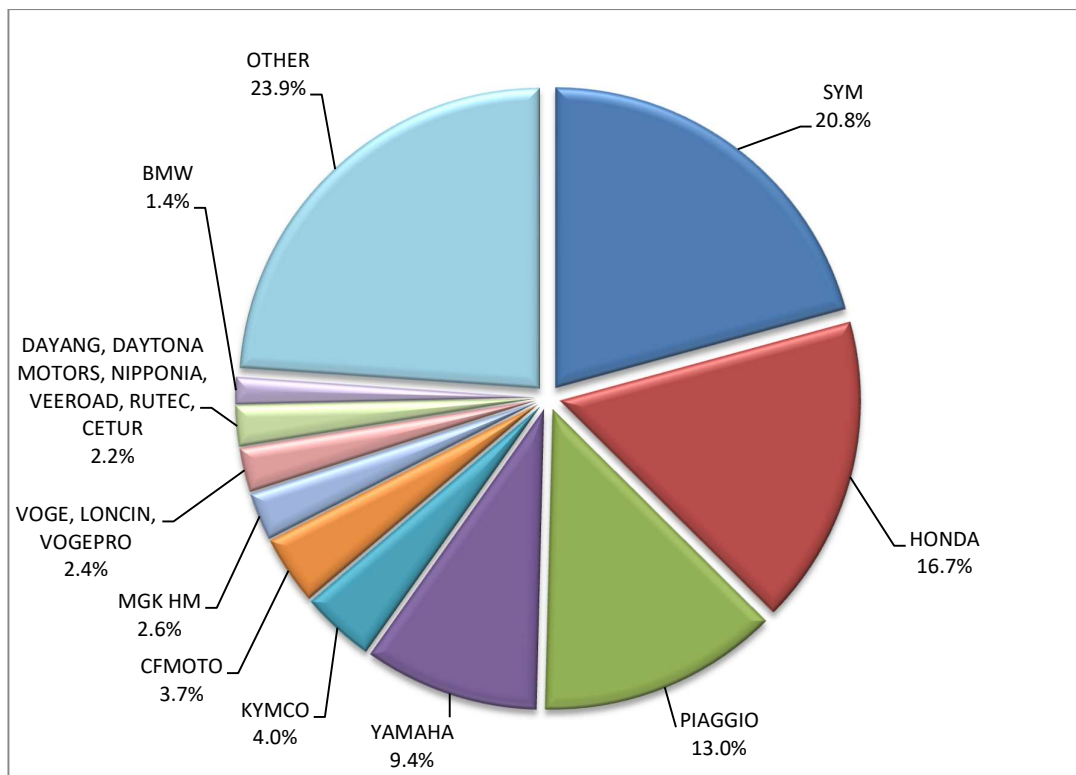
Sales of new and used motorcycles by make or manufacturer: July 2024 and January - July 2024

Make	Motorcycles			
	July		January - July	
	new	used	new	used
VONROAD WJM 150	-	-	-	1
WANGYE, SANBEN, UM, KENOS, SUPERBYKE, MDC, MISTRAL	5	-	53	-
WONJAN, THRUST MOTOR, WMOTO, KEEWAY, TD	25	-	163	-
WUZHENG	1	-	2	-
XEV, X, XEV YOYO	15	-	86	1
XIAMEN XIASHING	-	1	-	1
XINRI, SUNRA ,APACHI, ISILDAR, ISILDAR APACHI, Wayscral, KRAL	3	-	28	-
YADEA	3	-	6	-
YAMAHA	1,009	91	4,666	534
YINXIANG, KENBO	-	-	-	1
YOUYAKU, YOUYAKU ELECTRIC SCOOTER	3	-	3	-
ZERO MOTORCYCLES	-	-	5	-
ZHIDOU , ZD, RKS	3	-	12	-
ZHONGNENG, ASYA, DADO, ZNEN, BARON	-	-	-	1
ZHONGNENG, ZNEN, AGM, AJS, YUKI, COLIBRI, EUROCKA, BTC, NOVA MOTORS, LEXMOTO	-	-	1	-
ZHONGNENG, ZNEN, AGM, BTC, CLS, COLIBRI, DAYTONA MOTORS, DERRACE, DOCKER, JM MOTORS, KUBA	19	-	52	-
ZHONGNENG, ZNEN, AGM, BTC, CLS, COLIBRI, DAYTONA MOTORS, DERRACE, DOCKER, JM MOTORS, KUBA, La souris, LEXMOTO	17	-	85	-
ZHONGNENG, ZNEN, AGM, YUKI, COLIBRI, LEXMOTO, Minimoto, NECO, ROMET MOTORS	3	-	9	-
ZUNDAPP	-	-	-	1
ZXMCO, NIJ, DAYTONA MOTORS, PINK	1	-	11	-
TOTAL	10,750	462	49,512	2,578

Graph 13. Sales of new motorcycles (July 2024)



Graph 14. Sales of new motorcycles (January – July 2024)



EXPLANATORY NOTES

Survey on the issuing of new road motor vehicle circulation licenses	The survey on the issuing of new motor vehicle circulation licenses is a census survey. The released data give information, at country level, on the brand and type of the motor vehicle, as well as whether it is new or used. The survey does not include vehicles that move on rails, trolley busses, agricultural tractors and machinery. In addition, the following are excluded: all motor vehicles of the Armed Forces, Police, Fire Brigade, State Services, Diplomatic Corps, Foreign Missions, and Invalids of Wars, as well as motorcycles with a cylinder capacity less than 50 cc.
Legal basis	Law 3832/2010
Reference Period	July 2024
Coverage	The production of monthly data is based on the registers held by the Ministry of Infrastructure, Transport and Networks, which records all the monthly changes observed in the vehicle registration licenses at country level.
Definitions	<p>Road motor vehicle is any vehicle that, irrespective of the number of wheels, is moved by an engine and is designed to transport persons or cargo or both of them, either they are on the same single vehicle or on a trailer carried by the main motor vehicle.</p> <p>New road motor vehicle is any motor vehicle that is registered for the first time in Greece during the reference month and has not been put into circulation in any other country.</p> <p>Used motor vehicle is any motor vehicle that is registered for the first time in Greece and has been imported as a used one from abroad</p> <p>Passenger motor vehicle: it is a motor vehicle designed to carry mostly people, having no more than 9 seats, including the driver's seat.</p> <p>Bus: it is a motor vehicle, which is designed to carry mostly people, having more than 10 seats, including the driver's seat. In the corresponding tables of this announcement, this category also includes articulated buses.</p> <p>Lorry: it is motor vehicle designed to carry mostly cargo. In the corresponding tables of this announcement, this category also includes tractors, tow trucks, articulated tractors, and trucks with trailers.</p> <p>Motorcycle: any two-wheeled motor vehicle, with or without sidecar, with maximum authorized design speed over 45 km/h, or in case it is powered by a combustion engine, with a cylinder capacity of 50 cc or over. In the corresponding tables of this announcement, this category also includes the three-wheeled motor vehicles – motor tricycles.</p> <p>Tricycle motor vehicle: it is a motor vehicle with three symmetrical wheels with maximum authorized design speed over 45 km/h, or in case it is powered by a combustion engine, with a cylinder capacity over the 50 cc. This category also includes four-wheel vehicles, except the light four-wheel motorcycles, whose empty vehicle tare (excluding the weight of the fuel or mixture of fuel-oil or the weight of the batteries for electric cars) is up to 400 kg in the case the vehicle is designed for passenger use or up to 550 kg in case the vehicle is designed to carry cargo and whose engine is up to 15KW.</p>
Methodology	Exhaustive Survey. The primary data derive from the Ministry of Infrastructure, Transport and Networks and are based on the issuing of new circulation licenses as they are registered by the Regional Offices for Transport and Communications.
References	More information (graphs, tables) concerning the survey on the issuing of new motor vehicle circulation licenses are available on the webpage of ELSTAT, www.statistics.gr , under the link http://www.statistics.gr/en/statistics/-/publication/SME24/-