



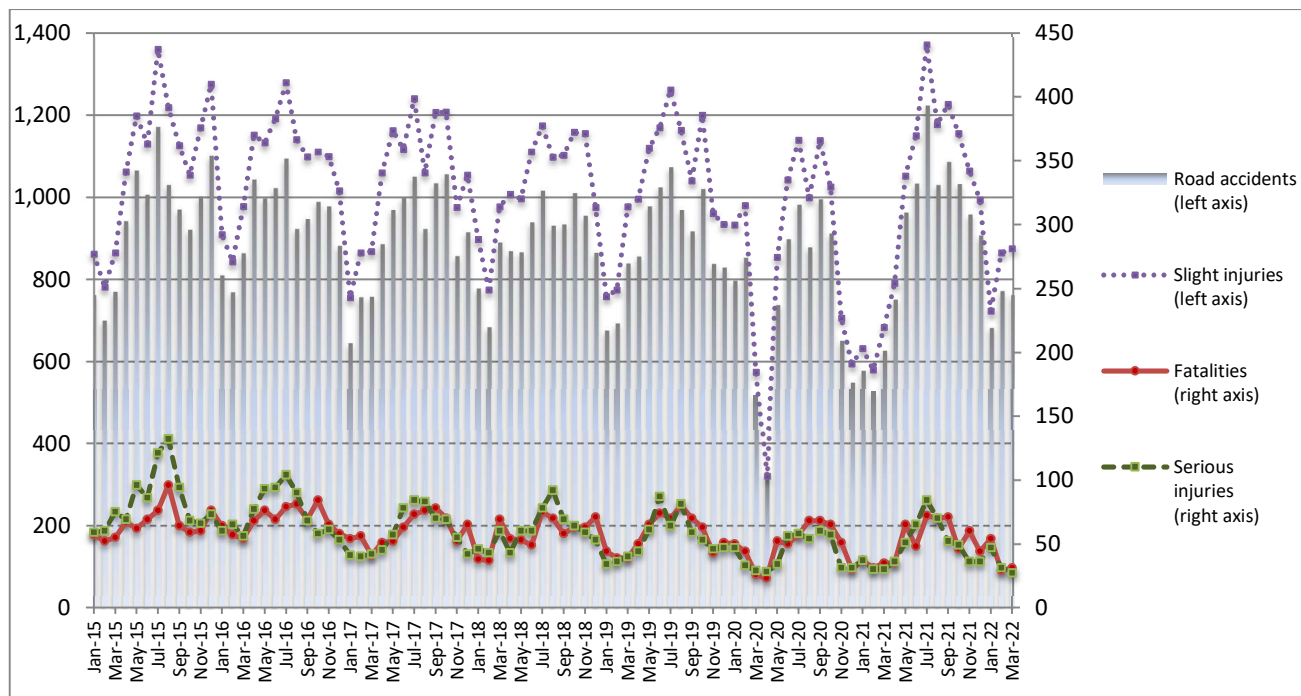
## PRESS RELEASE

### ROAD TRAFFIC ACCIDENTS: March 2022

The Hellenic Statistical Authority (ELSTAT) announces provisional<sup>1</sup> data from the survey on “Road Traffic Accidents” for March 2022. In particular, the road traffic accidents which occurred in Greece, resulting in death or injury, increased by 21.5% in comparison with the corresponding month of 2021 (762 road accidents in March 2022, against 627 road accidents in March 2021).

The casualties of the injury-causing accidents that occurred in March 2022 were as follows: 31 deaths, 27 serious injuries and 874 slight injuries. In contrast, in March 2021 the corresponding figures were: 35 deaths, 30 serious injuries and 682 slight injuries. Therefore, road traffic accident casualties in March 2022 decreased by 11.4% for deaths, by 10.0% for serious injuries and increased by 28.2% for slight injuries.

**Graph 1: Road traffic accidents and casualties,  
January 2015 - March 2022**



Provisional data for the period April 2021 – March 2022

**Information on methodological issues:**

Sectoral Statistics Division  
Transport Statistics Section  
P. Tzortzi, L. Miliara  
Tel: +30 213 135 2187, +30 213 135 3095  
e-mail: [p.tzortzi@statistics.gr](mailto:p.tzortzi@statistics.gr), [l.miliara@statistics.gr](mailto:l.miliara@statistics.gr)

**Information for data provision:**

Tel: +30 213 135 2022, 2308, 2310  
e-mail: [data.dissem@statistics.gr](mailto:data.dissem@statistics.gr)

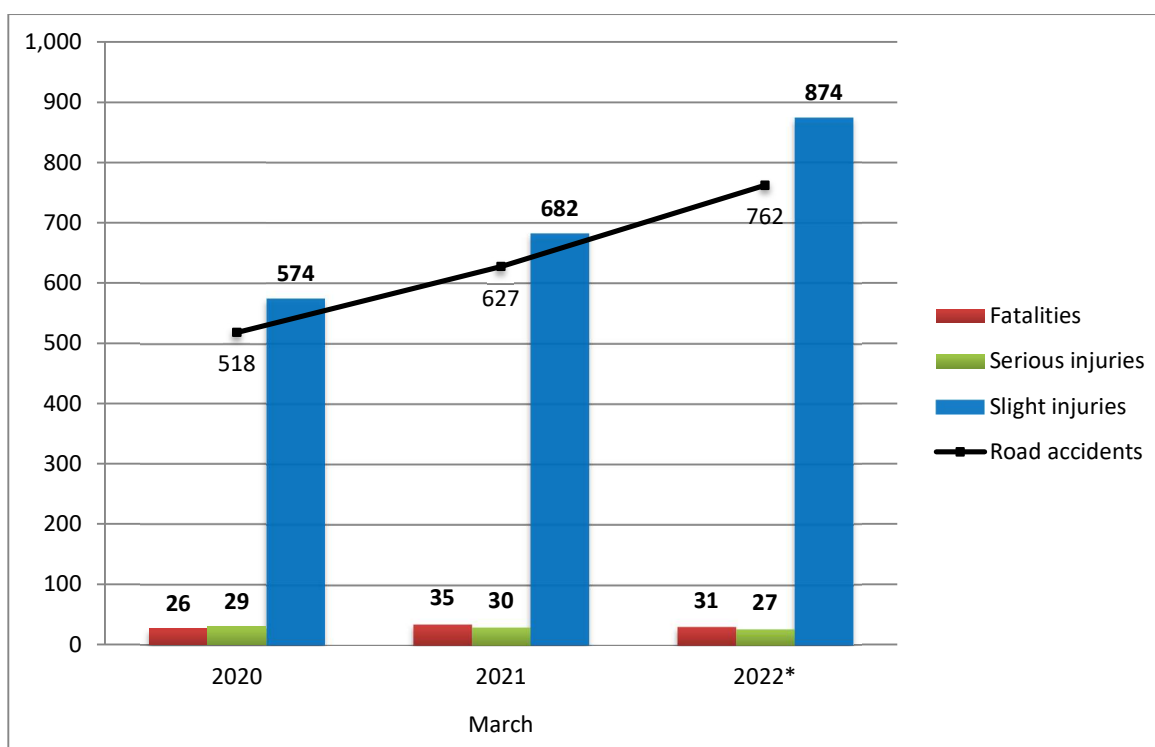
<sup>[1]</sup> Data for the reference year is provisional until the finalization of the annual data, which takes place 10 months after the end of the reference year and is published in the corresponding press release of the following year. During these 10 months the provisional data is updated on the basis of the data of the Road Accident Forms of that year which is transmitted to ELSTAT by Police Authorities (see explanatory notes).

**Table 1: Road traffic accidents and casualties, March 2020 - 2022\***

	March				
	2020	2021	2021/2020 (%)	2022*	2022*/2021 (%)
<b>Road accidents</b>	<b>518</b>	<b>627</b>	<b>21.0</b>	<b>762</b>	<b>21.5</b>
<b>Fatalities</b>	<b>26</b>	<b>35</b>	<b>34.6</b>	<b>31</b>	<b>-11.4</b>
<b>Total injuries</b>	<b>603</b>	<b>712</b>	<b>18.1</b>	<b>901</b>	<b>26.5</b>
Serious injuries	29	30	3.4	27	-10.0
Slight injuries	574	682	18.8	874	28.2

\* Provisional data

**Graph 2: Road traffic accidents and casualties, March 2020 - 2022\***



\* Provisional data

**Table 2: Road traffic accidents and casualties, by region and department, March 2021 and 2022\***

Region and department	Road accidents			Fatalities			Serious injuries			Slight injuries		
	2021	2022*	%	2021	2022*	%	2021	2022*	%	2021	2022*	%
<b>Greece Total</b>	<b>627</b>	<b>762</b>	<b>21.5</b>	<b>35</b>	<b>31</b>	<b>-11.4</b>	<b>30</b>	<b>27</b>	<b>-10.0</b>	<b>682</b>	<b>874</b>	<b>28.2</b>
<b>Anatoliki Makedonia and Thraki (East Macedonia and Thrace)</b>	<b>20</b>	<b>20</b>	<b>0.0</b>	<b>3</b>	<b>2</b>	<b>-33.3</b>	<b>2</b>	<b>1</b>	<b>-50.0</b>	<b>22</b>	<b>26</b>	<b>18.2</b>
Drama	4	5	25.0	0	0		0	0		4	6	
Evros	5	7	40.0	0	0		0	1		6	6	
Kavala	6	4	-33.3	1	1		1	0		10	7	
Xanthi	1	3	200.0	0	0		1	0		0	5	
Rodopi	4	1	-75.0	2	1		0	0		2	2	
<b>Kentriki Makedonia (Central Macedonia)</b>	<b>128</b>	<b>149</b>	<b>16.4</b>	<b>3</b>	<b>6</b>	<b>100.0</b>	<b>2</b>	<b>4</b>	<b>100.0</b>	<b>152</b>	<b>180</b>	<b>18.4</b>
Imathia	1	2	100.0	0	1		0	0		1	4	
Thessaloniki	110	123	11.8	1	2		0	1		132	153	
Kilkis	2	7	250.0	1	1		0	0		1	8	
Pella	5	4	-20.0	1	1		1	1		7	2	
Pieria	3	5	66.7	0	0		0	2		3	5	
Serres	3	4	33.3	0	0		1	0		3	5	
Chalkidiki	4	4	0.0	0	1		0	0		5	3	
<b>Dytiki Makedonia (West Macedonia)</b>	<b>4</b>	<b>3</b>	<b>-25.0</b>	<b>3</b>	<b>0</b>	<b>-100.0</b>	<b>0</b>	<b>0</b>	<b>-</b>	<b>4</b>	<b>4</b>	<b>0.0</b>
Grevena	0	1	-	0	0		0	0		0	2	
Kastoria	1	1	0.0	1	0		0	0		0	1	
Kozani	2	1	-50.0	1	0		0	0		4	1	
Florina	1	0	-100.0	1	0		0	0		0	0	
<b>Ipeiros (Epirus)</b>	<b>8</b>	<b>9</b>	<b>12.5</b>	<b>0</b>	<b>0</b>	<b>-</b>	<b>2</b>	<b>2</b>	<b>0.0</b>	<b>9</b>	<b>10</b>	<b>11.1</b>
Arta	1	3	200.0	0	0		1	0		0	4	
Thesprotia	3	1	-66.7	0	0		1	0		3	1	
Ioannina	3	3	0.0	0	0		0	2		5	2	
Preveza	1	2	100.0	0	0		0	0		1	3	
<b>Thessalia (Thessaly)</b>	<b>10</b>	<b>7</b>	<b>-30.0</b>	<b>2</b>	<b>1</b>	<b>-50.0</b>	<b>2</b>	<b>1</b>	<b>-50.0</b>	<b>8</b>	<b>5</b>	<b>-37.5</b>
Karditsa	1	1	0.0	0	0		0	0		2	1	
Larissa	4	3	-25.0	0	0		1	1		4	2	
Magnissia	3	3	0.0	1	1		1	0		1	2	
Trikala	2	0	-100.0	1	0		0	0		1	0	
<b>Ionian Nisia (Ionian Islands)</b>	<b>6</b>	<b>7</b>	<b>16.7</b>	<b>2</b>	<b>1</b>	<b>-50.0</b>	<b>0</b>	<b>1</b>	<b>-</b>	<b>4</b>	<b>8</b>	<b>100.0</b>
Zakynthos	3	1	-66.7	1	1		0	0		2	0	
Kerkyra	0	2	-	0	0		0	0		0	4	
Kefallinia	1	3	200.0	0	0		0	1		1	3	
Lefkada	2	1	-50.0	1	0		0	0		1	1	

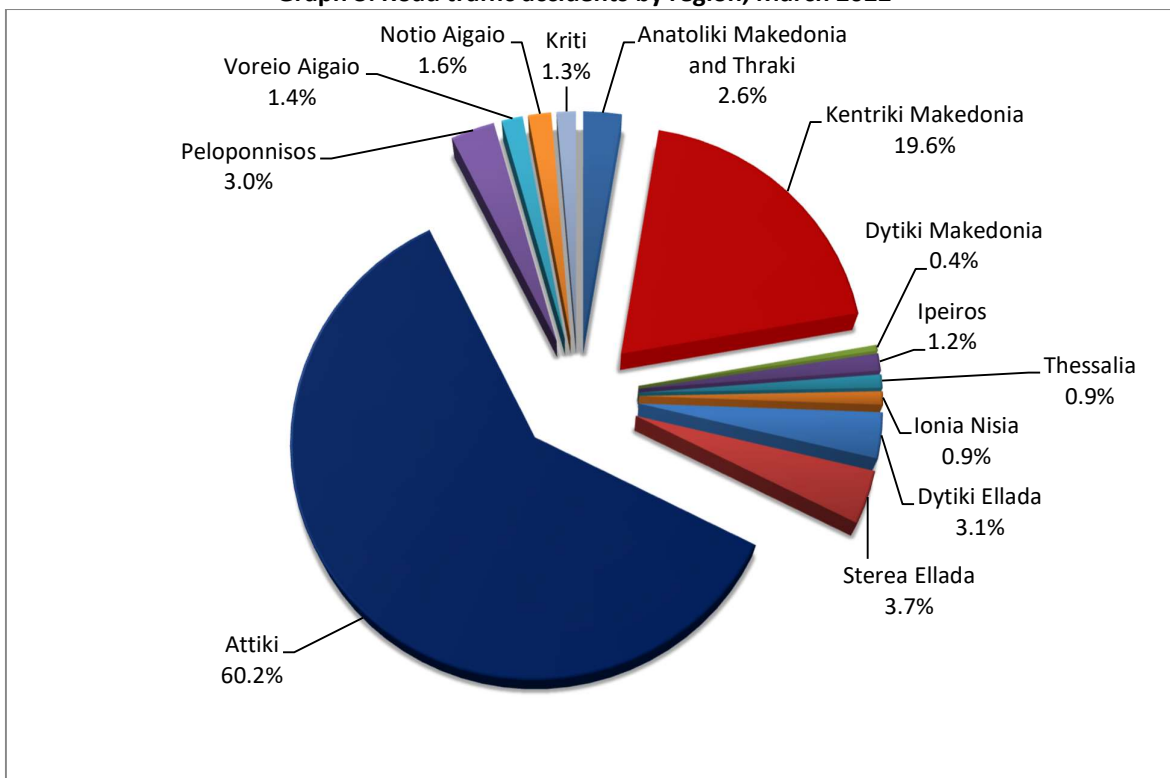
\* Provisional data

**Table 2: Road traffic accidents and casualties, by region and department, March 2021 and 2022\* (Continued)**

Region and department	Road accidents			Fatalities			Serious injuries			Slight injuries		
	2021	2022*	%	2021	2022*	%	2021	2022*	%	2021	2022*	%
<b>Dytiki Ellada (West Greece)</b>	<b>16</b>	<b>24</b>	<b>50.0</b>	<b>2</b>	<b>2</b>	<b>0.0</b>	<b>2</b>	<b>1</b>	<b>-50.0</b>	<b>15</b>	<b>27</b>	<b>80.0</b>
Etolia & Akarnania	9	12	33.3	0	2		1	1		10	12	
Achaia	4	7	75.0	0	0		0	0		4	8	
Ilia	3	5	66.7	2	0		1	0		1	7	
<b>Stereia Ellada</b>	<b>22</b>	<b>28</b>	<b>27.3</b>	<b>1</b>	<b>3</b>	<b>200.0</b>	<b>3</b>	<b>0</b>	<b>-100.0</b>	<b>20</b>	<b>32</b>	<b>60.0</b>
Viotia	7	4	-42.9	0	1		1	0		8	5	
Evia	11	13	18.2	1	0		1	0		9	14	
Evrytania	0	1	-	0	0		0	0		0	1	
Fthiotida	4	7	75.0	0	2		1	0		3	8	
Fokida	0	3	-	0	0		0	0		0	4	
<b>Attiki (Attica)</b>	<b>363</b>	<b>459</b>	<b>26.4</b>	<b>12</b>	<b>6</b>	<b>-50.0</b>	<b>9</b>	<b>12</b>	<b>33.3</b>	<b>404</b>	<b>519</b>	<b>28.5</b>
<b>Peloponnisos (Peloponnese)</b>	<b>27</b>	<b>23</b>	<b>-14.8</b>	<b>4</b>	<b>2</b>	<b>-50.0</b>	<b>3</b>	<b>2</b>	<b>-33.3</b>	<b>25</b>	<b>24</b>	<b>-4.0</b>
Argolida	7	5	-28.6	2	1		0	0		8	4	
Arkadia	6	6	0.0	0	1		1	2		6	6	
Korinthia	7	10	42.9	0	0		0	0		7	11	
Lakonia	4	0	-100.0	2	0		0	0		2	0	
Messinia	3	2	-33.3	0	0		2	0		2	3	
<b>Voreio Aigaio (North Aegean)</b>	<b>3</b>	<b>11</b>	<b>266.7</b>	<b>0</b>	<b>1</b>	<b>-</b>	<b>0</b>	<b>0</b>	<b>-</b>	<b>5</b>	<b>13</b>	<b>160.0</b>
Lesvos	2	8	300.0	0	0		0	0		4	8	
Samos	0	1	-	0	0		0	0		0	1	
Chios	1	2	100.0	0	1		0	0		1	4	
<b>Notio Aigaio (South Aegean)</b>	<b>15</b>	<b>12</b>	<b>-20.0</b>	<b>1</b>	<b>0</b>	<b>-100.0</b>	<b>3</b>	<b>3</b>	<b>0.0</b>	<b>12</b>	<b>11</b>	<b>-8.3</b>
Dodekanissos	7	6	-14.3	1	0		1	1		5	7	
Kyklades	8	6	-25.0	0	0		2	2		7	4	
<b>Kriti (Crete)</b>	<b>5</b>	<b>10</b>	<b>100.0</b>	<b>2</b>	<b>7</b>	<b>250.0</b>	<b>2</b>	<b>0</b>	<b>-100.0</b>	<b>2</b>	<b>15</b>	<b>650.0</b>
Iraklio	1	8	700.0	0	7		1	0		1	13	
Lassithi	0	1	-	0	0		0	0		0	1	
Rethymno	0	0	-	0	0		0	0		0	0	
Chania	4	1	-75.0	2	0		1	0		1	1	

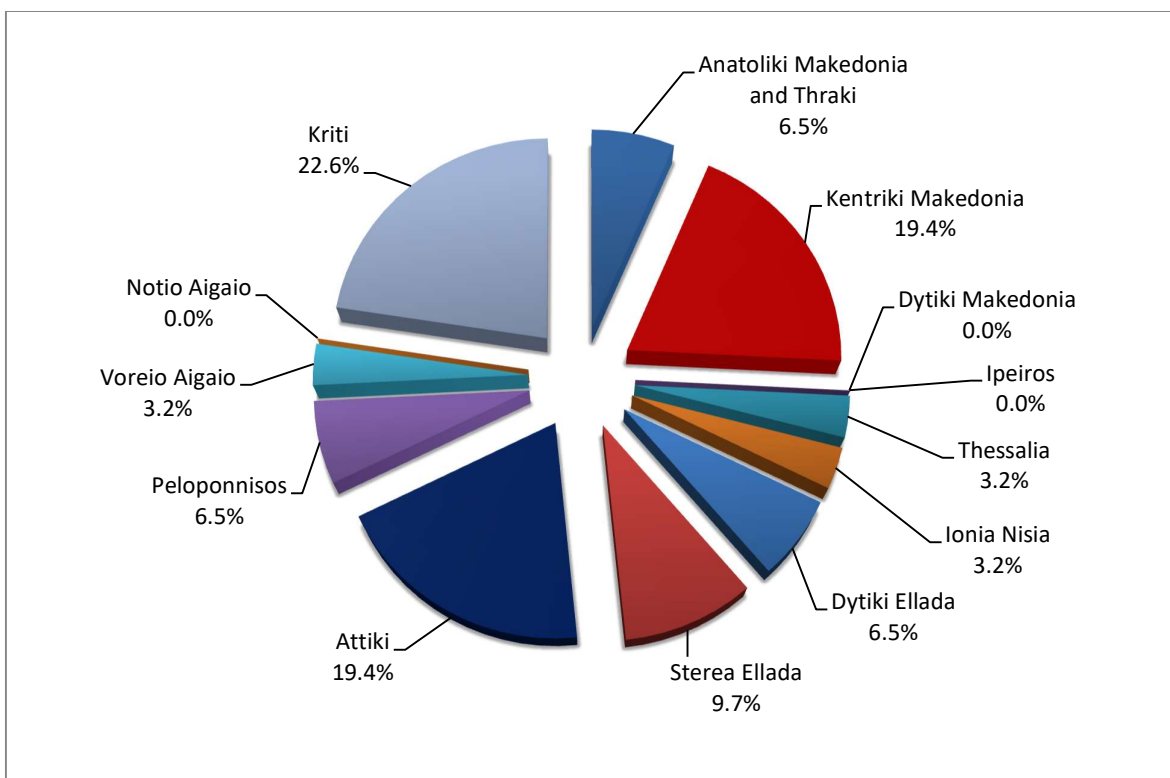
\* Provisional data

**Graph 3: Road traffic accidents by region, March 2022 \***



\* Provisional data

**Graph 4: Fatalities by region, March 2022 \***



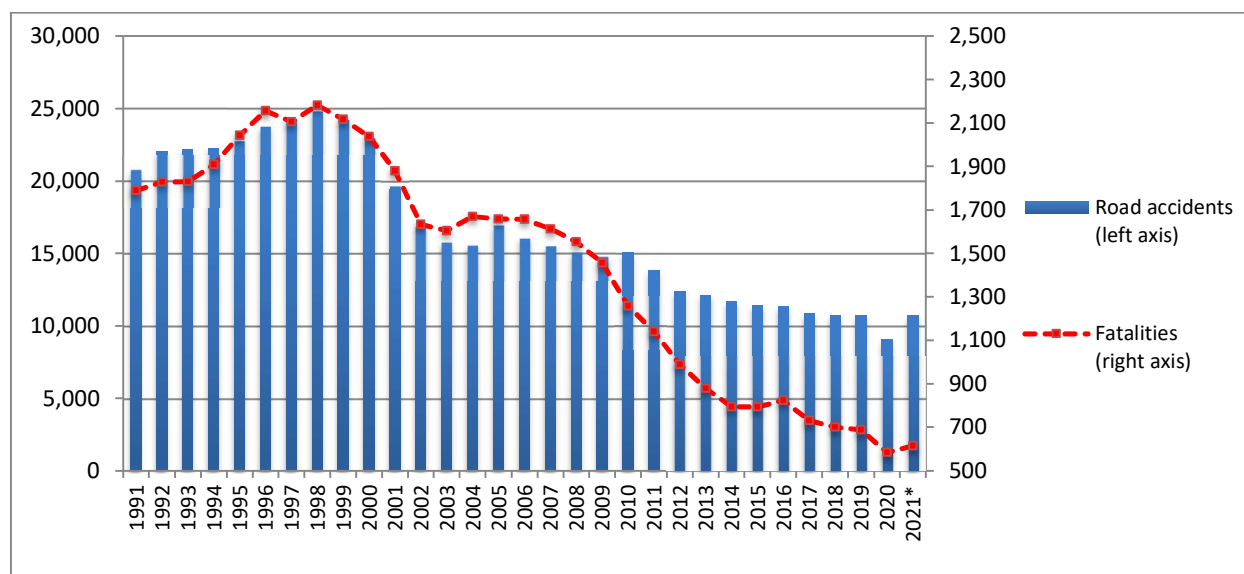
\* Provisional data

**Table 3: Road traffic accidents and casualties for the period January - March 2020, 2021 and 2022\***

	2020		2021		2022 *
	January - March	Total year	January - March	Total year*	January - March
<b>Road Accidents</b>	2,168	<b>9,083</b>	1,732	<b>10,715</b>	2,216
<b>Annual Change (%)</b>			-20.1	18.0	27.9
<b>Fatalities</b>	120	<b>584</b>	103	<b>614</b>	114
<b>Annual Change (%)</b>			-14.2	5.1	10.7
<b>Serious injuries</b>	109	<b>518</b>	97	<b>576</b>	105
<b>Annual Change (%)</b>			-11.0	11.2	8.2
<b>Slight injuries</b>	2,486	<b>10,300</b>	1,892	<b>11,870</b>	2,461
<b>Annual Change (%)</b>			-23.9	15.2	30.1

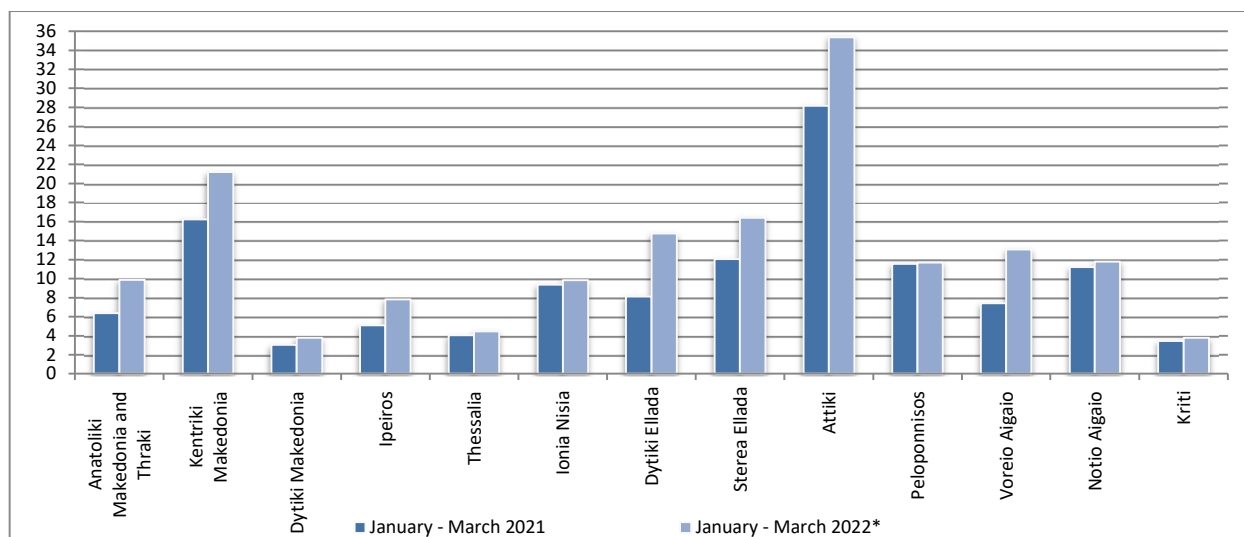
\* Provisional data

**Graph 5: Total road traffic accidents and fatalities, 1991-2021\***



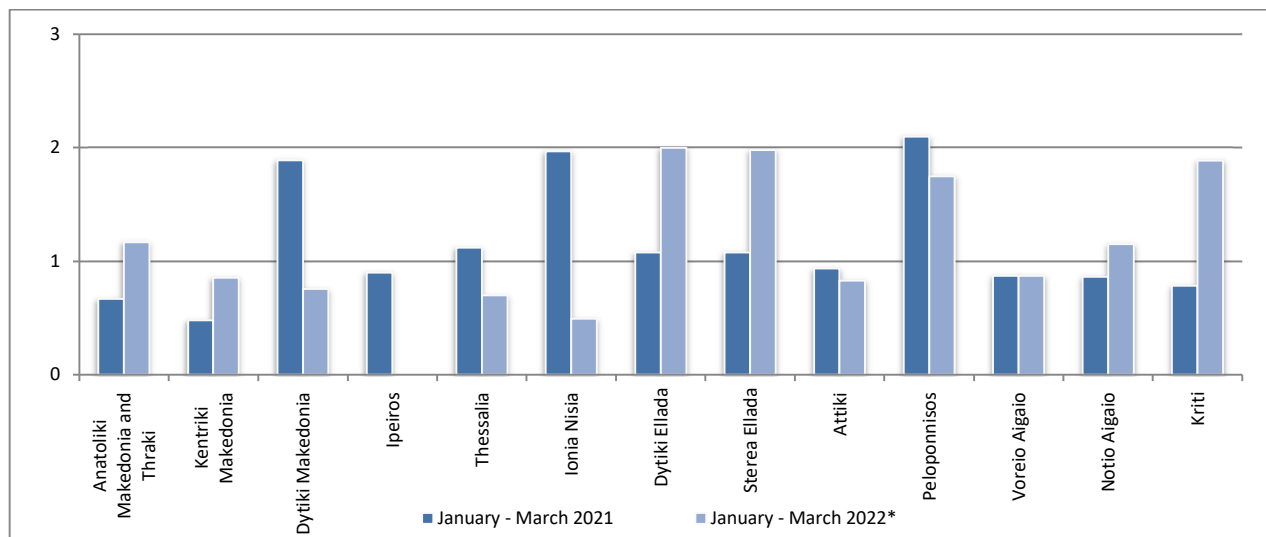
\* Provisional data for the period April 2021 – December 2021

**Graph 6: Road traffic accidents per 100,000 inhabitants for the period January - March 2021 and 2022\***

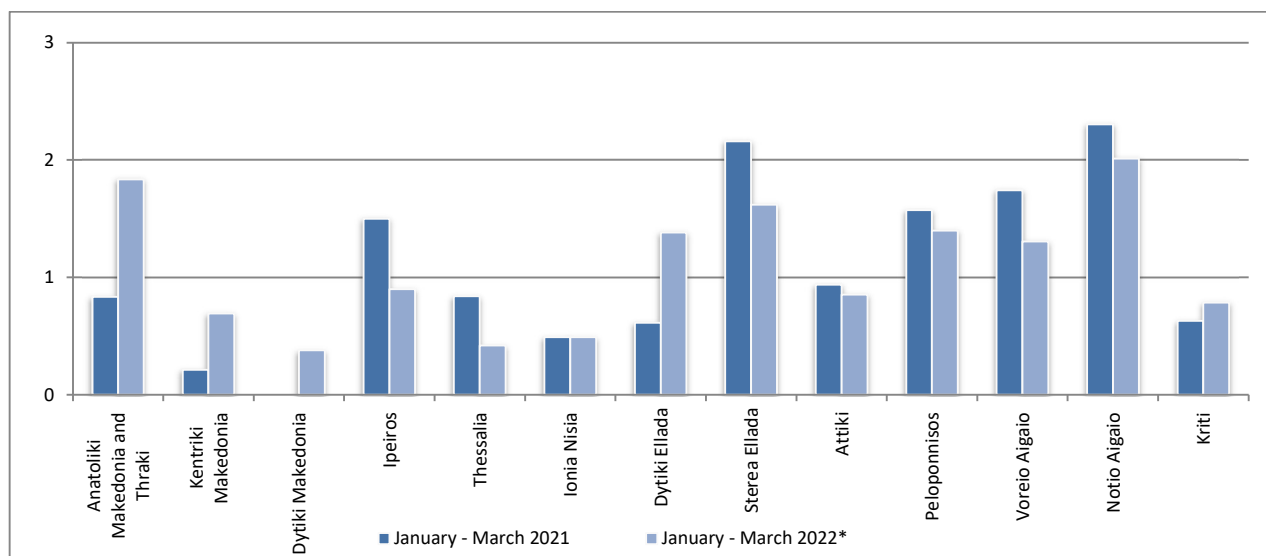


\* Provisional data

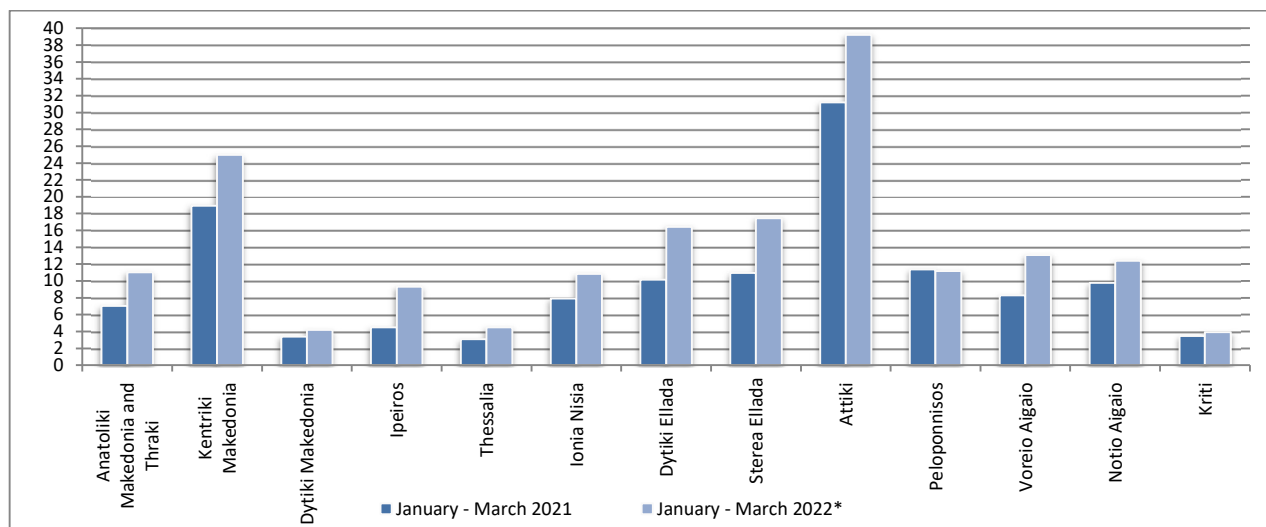
**Graph 7: Fatalities per 100,000 inhabitants for the period January - March 2021 and 2022\***



**Graph 8: Serious injuries per 100,000 inhabitants for the period January - March 2021 and 2022\***



**Graph 9: Slight injuries per 100,000 inhabitants for the period January - March 2021 and 2022\***



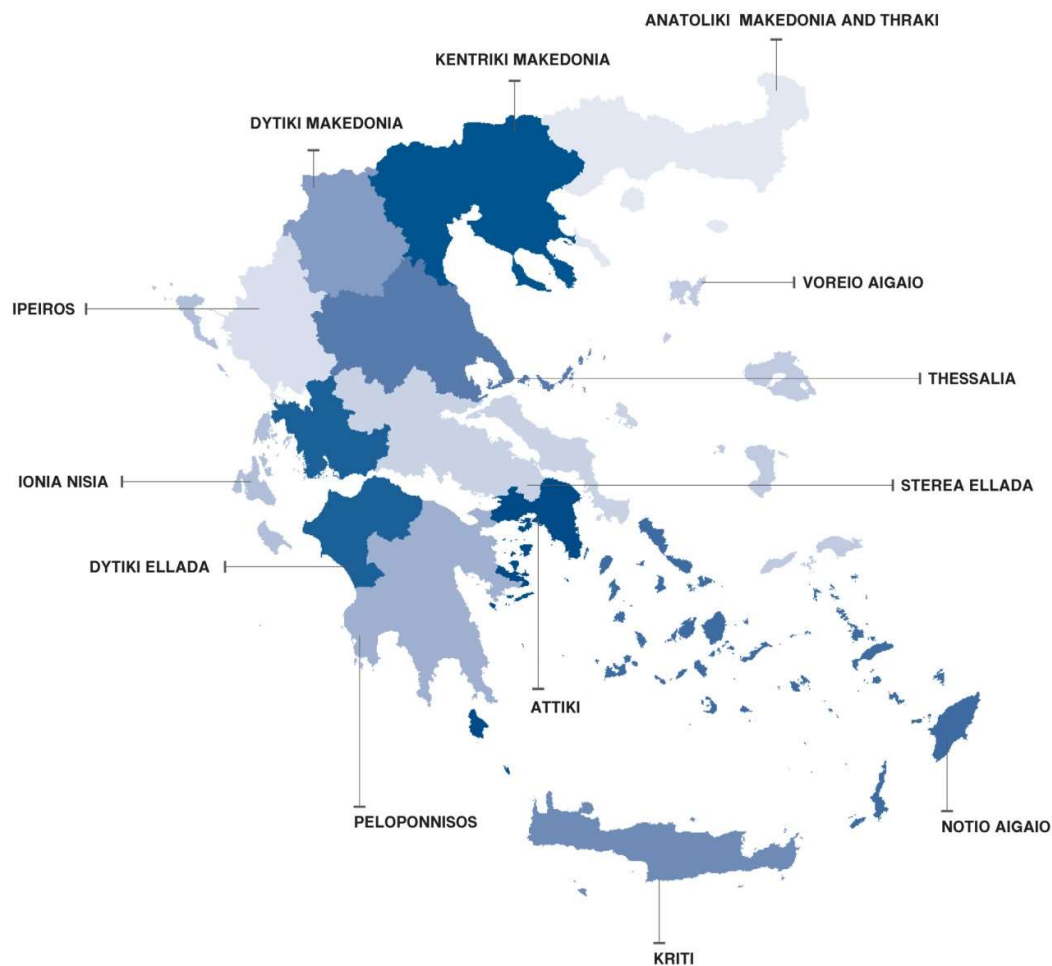
\* Provisional data

## EXPLANATORY NOTES

**Survey on Road Traffic Accidents** The Survey on Road Traffic Accidents is conducted on a monthly basis and it records, for each region (see map) and department of Greece and for each month separately, the number of accidents resulting in death or injury, as well as the number of persons injured by categories (drivers, passengers, pedestrians).

On a yearly basis, road traffic accidents are further analyzed. The competent agencies for filling in/collecting the forms on road accidents are the local Police Authorities and the local Port Authorities of Greece.

The lower level of analysis for the place where an injury road accident occurred is the settlement. Data are collected on a monthly basis. The main variables are the following: place of accident, kind of road, casualties, conditions of road surface and type of road.



**Legal basis** The Survey on Road Traffic Accidents is governed by Council Decision 93/704 of the European Community.

**Reference period** Monthly.

**Availability of data** Provisional data are available 2 months after the reference month.  
Final data are available 10 months after the reference year.



**Definitions** **Road accident** (injury accident): Any accident involving at least one road motor vehicle in motion on a public road or square to which the public has access (excluding yards, industrial sites or vehicle depot of public transport enterprises), resulting in at least one injured or killed person. Accidents with only material damages are not included.

**Fatality (Death):** Any person killed immediately or dying within 30 days as a result of an injury accident (This national definition applies since 01.01.1996)

**Person injured:** Any person who sustained an injury as result of an injury accident, and who normally needs medical treatment.

**Serious injury:** Any person who sustained an injury as result of an injury accident, such as brain damages, mutilation, multiple injuries, which may result in lack of awareness or which are life-threatening.

**Slight injury:** Any person injured who sustained minor and not life-threatening injuries.

**Vehicle:** Include motor vehicles, trolleybuses, motorcycles, bicycles, motorbikes, agricultural and road making machines, animal and hand-drawn vehicles. Railway vehicles are excluded, unless the road accident involves at least one of the aforementioned types of vehicles and therefore, railway vehicles are considered vehicles.

**Methodology** The forms of the survey are filled in by the local Police Authorities and the local Port Authorities as well.

**References** More information about Road Traffic Accidents is available on ELSTAT's website and more specifically at the link: <https://www.statistics.gr/en/statistics/-/publication/SDT03/>.