

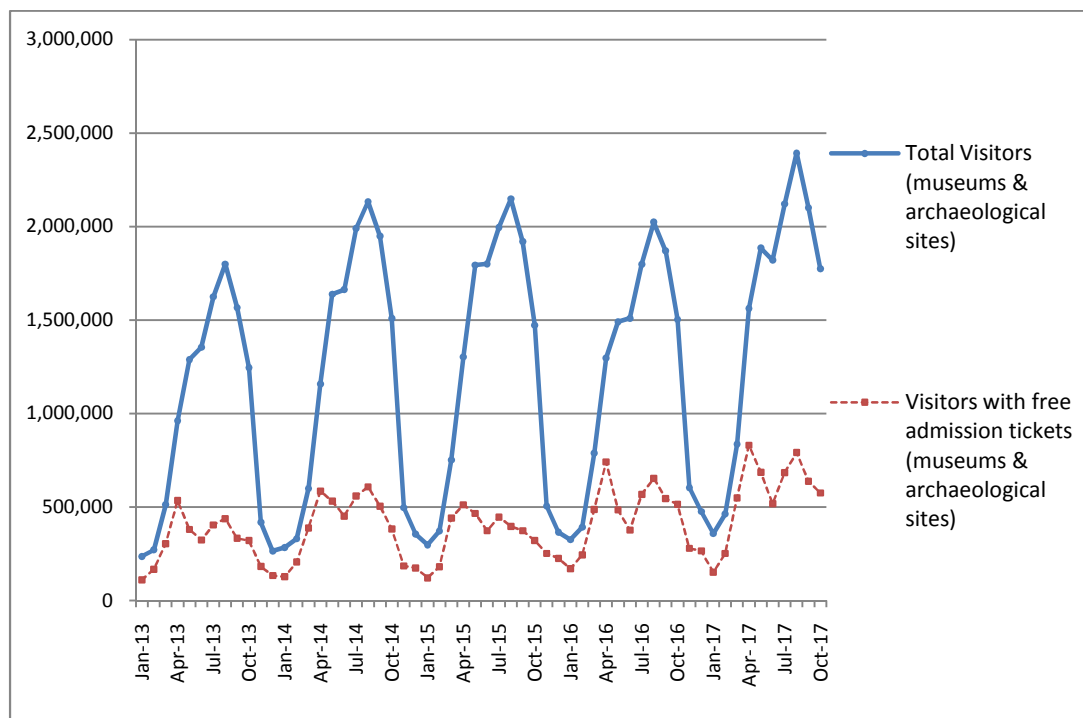


PRESS RELEASE
SURVEY ON MUSEUMS AND ARCHAEOLOGICAL SITES ATTENDANCE
OCTOBER 2017

The Hellenic Statistical Authority (ELSTAT) announces the results of the *Survey on Museums and Archaeological Sites Attendance* for October 2017. More specifically:

- In October 2017 compared with the corresponding month of 2016, Museums experienced a 14.0% increase in the number of visitors and a 6.7% increase in the number of free admission visitors as well as a 22.3% increase in their receipts (Table 1).
- In October 2017 compared with the corresponding month of 2016, the number of visitors at Archaeological sites recorded an increase of 19.8%, while an increase of 15.2% was observed in the number of free admission visitors and a 21.2% increase in the corresponding receipts (Table 1).
- During the ten-month period from January to October 2017, an increase of 16.5% was observed in the number of visitors of Museums, while an increase of 16.9% was recorded in the number of free admission visitors and a 20.9% increase in the relevant receipts, in comparison with the corresponding period of 2016 (Table 2).
- As regards Archaeological sites, during the ten-month period from January to October 2017, an increase of 18.4% was recorded in the number of visitors, while a 21.3% increase was observed in the number of free admission visitors and a 18.4% increase in the relevant receipts, in comparison with the corresponding period of 2016 (Table 2).

Graph 1: Visitors of Museums and Archaeological sites (Jan 2013 – Oct 2017)



Information:

Social Statistics Division

Section of Culture and Sports statistics,

Argyro Pateraki (Tel: +30 213 1352129, e-mail: ar.pateraki@statistics.gr)

**TABLE 1: VISITORS OF MUSEUMS AND ARCHAEOLOGICAL SITES - TOTAL RECEIPTS
(OCTOBER 2016 & OCTOBER 2017)**

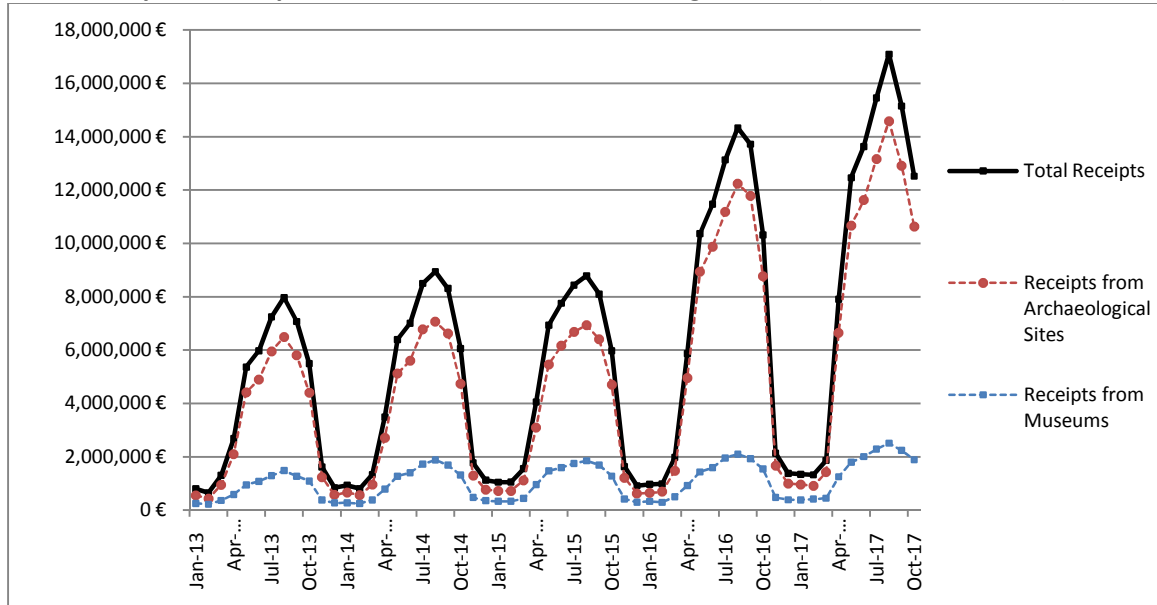
I. VISITORS			
Museums and Archaeological sites	2016	2017	Change 2017/2016
Total number of visitors (A+B)	1,503,277	1,774,246	18.0%
A. Museums (C+E)	461,663	526,443	14.0%
Acropolis Museum	146,436	160,603	9.7%
National Archaeological	50,402	54,007	7.2%
Ancient Olympia	11,787	17,511	48.6%
Palace of the Grand Master (Rhodes)	28,469	28,599	0.5%
Herakleion Archaeological (Crete)	43,998	53,790	22.3%
White Tower	27,627	24,056	-12.9%
Delphi	17,470	21,402	22.5%
Other museums	135,474	166,475	22.9%
B. Archaeological Sites (D+F)	1,041,614	1,247,803	19.8%
Epidavros ⁽¹⁾	35,620	47,394	33.1%
The Acropolis of Mycenae & Atreus' Treasure	33,096	40,029	20.9%
The Acropolis of Athens ⁽²⁾	175,842	295,623	-
Sounio	22,344	26,292	17.7%
The Acropolis of Lindos	50,052	57,609	15.1%
Royal Tombs of Vergina	15,218	15,487	1.8%
Ancient Olympia	46,924	60,858	29.7%
Knossos (Crete)	68,789	83,266	21.0%
Phaistos (Crete)	10,375	14,442	39.2%
Ancient Korinthos ⁽¹⁾	19,146	21,842	14.1%
Mystras ⁽¹⁾	11,058	11,779	6.5%
Delphi	27,692	35,805	29.3%
Other archaeological sites	525,458	537,377	2.3%
II. VISITORS WHO PAID TICKET			
	2016	2017	Change 2017/2016
Total number of visitors who paid ticket (C+D)	988,726	1,198,540	21.2%
C. Museums	260,309	311,548	19.7%
D. Archaeological sites	728,417	886,992	21.8%
III. VISITORS WITH FREE ADMISSION TICKETS			
	2016	2017	Change 2017/2016
Total number of visitors with free admission ticket (E+F)	514,551	575,706	11.9%
E. Museums	201,354	214,895	6.7%
F. Archaeological sites	313,197	360,811	15.2%
IV. RECEIPTS (euros)			
	2016	2017	Change 2017/2016
Total Receipts (G+H)	10,315,001.00	12,520,462.00	21.4%
G. Museums	1,542,519.00	1,887,236.00	22.3%
H. Archaeological sites	8,772,482.00	10,633,226.00	21.2%

⁽¹⁾ Flat rate ticket, valid both for the museum and the archaeological site

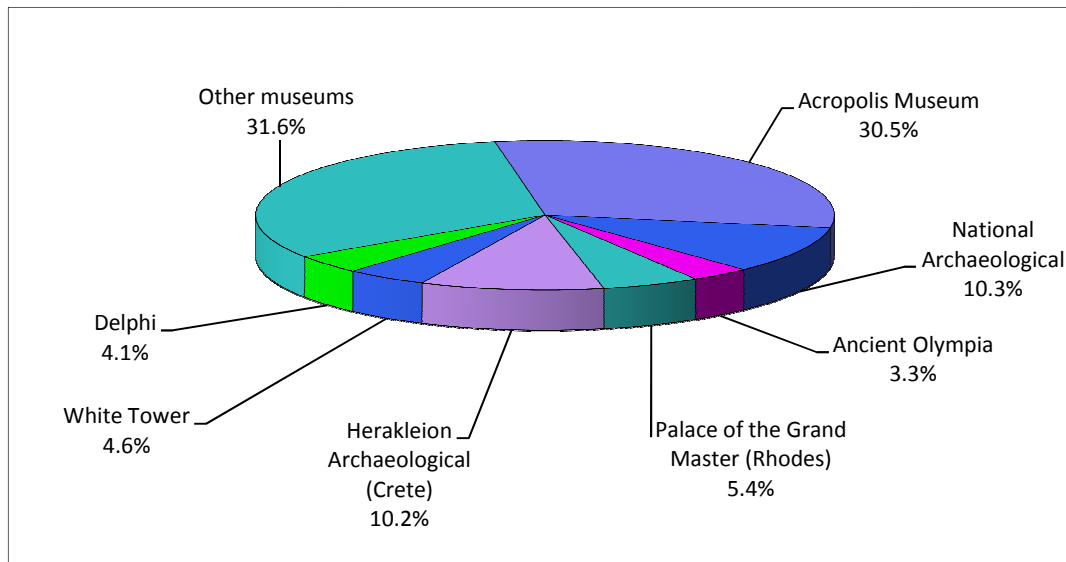
⁽²⁾ From May 2017 onwards, the data for the number of tickets in the archaeological site of the Acropolis of Athens include the tickets of the Ancient Theatre of Dionysos, therefore the data for the years 2016-2017 are not comparable.

The following graphs depict the evolution of the receipts (Graph 2), as well as the number of visitors by Museum and Archaeological Site (Graphs 3 and 4 respectively),

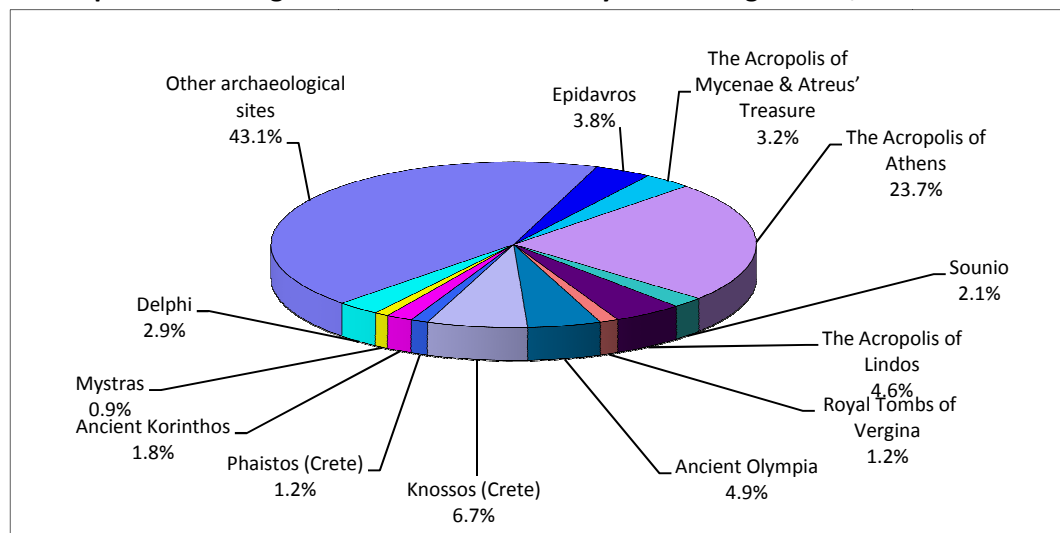
Graph 2: Receipts from Museums and Archaeological Sites (Jan 2013 - Oct 2017)



Graph 3: Percentage distribution of Visitors by Museum, October 2017



Graph 4: Percentage distribution of Visitors by Archaeological site, October 2017



**TABLE 2: VISITORS OF MUSEUMS AND ARCHAEOLOGICAL SITES - TOTAL RECEIPTS
(2015, 2016 AND JANUARY- OCTOBER 2016 & 2017)**

I. VISITORS					
Museums and Archaeological sites	2015	2016	JANUARY- OCTOBER		change
			2016	2017	2017/2016
Total number of visitors (A+B)	14,725,895	14,080,639	12,999,989	15,314,326	17.8%
A. Museums (C+E)	4,405,842	4,515,966	4,034,117	4,698,538	16.5%
Acropolis Museum	1,510,615	1,406,096	1,251,319	1,428,037	14.1%
National Archaeological	476,754	447,093	388,860	489,279	25.8%
Ancient Olympia	135,972	124,136	116,572	137,841	18.2%
Palace of the Grand Master (Rhodes)	251,091	237,361	228,335	227,579	-0.3%
Herakleion Archaeological (Crete)	201,657	394,915	383,948	404,660	5.4%
White Tower	273,659	290,192	243,137	236,232	-2.8%
Delphi	205,369	166,091	153,365	196,919	28.4%
Other museums	1,350,725	1,450,082	1,268,581	1,577,991	24.4%
B. Archaeological Sites (D+F)	10,320,053	9,564,673	8,965,872	10,615,788	18.4%
Epidavros ⁽¹⁾	443,565	375,437	355,843	446,245	25.4%
The Acropolis of Mycenae & Atreus' Treasure	402,565	342,854	323,879	375,634	16.0%
The Acropolis of Athens ⁽²⁾	2,043,868	1,807,580	1,650,139	2,510,397	-
Sounio	236,285	222,800	205,641	237,727	15.6%
The Acropolis of Lindos	580,875	421,070	417,363	437,343	4.8%
Royal Tombs of Vergina	211,132	186,627	164,031	179,627	9.5%
Ancient Olympia	439,836	423,424	402,376	458,065	13.8%
Knossos (Crete)	632,288	611,455	596,770	612,119	2.6%
Phaistos (Crete)	94,689	77,071	75,716	83,186	9.9%
Ancient Korinthos ⁽¹⁾	141,490	153,307	143,916	181,560	26.2%
Mystras ⁽¹⁾	117,010	114,293	109,226	119,665	9.6%
Delphi	319,754	290,705	272,208	320,118	17.6%
Other archaeological sites	4,656,696	4,538,050	4,248,764	4,654,102	9.5%
II. VISITORS WHO PAID TICKET					
	2015	2016	JANUARY- OCTOBER		change
			2016	2017	2017/2016
Total number of visitors who paid ticket (C+D)	10,544,249	8,749,957	8,253,852	9,637,304	16.8%
C. Museums	2,867,641	2,406,665	2,239,584	2,600,641	16.1%
D. Archaeological sites	7,676,608	6,343,292	6,014,268	7,036,663	17.0%
III. VISITORS WITH FREE ADMISSION TICKETS					
	2015	2016	JANUARY- OCTOBER		change
			2016	2017	2017/2016
Total number of visitors with free admission ticket (E+F)	4.181.646	5.330.682	4.746.137	5.677.022	19.6%
E. Museums	1.538.201	2.109.301	1.794.533	2.097.897	16.9%
F. Archaeological sites	2.643.445	3.221.381	2.951.604	3.579.125	21.3%
IV. RECEIPTS (euros)					
	2015	2016	JANUARY- OCTOBER		change
			2016	2017	2017/2016
Total Receipts (G+H)	56,224,962.00	86,647,638.00	83,133,389.00	98,742,540.00	18.8%
G. Museums	12,385,213.00	13,448,464.00	12,587,524.00	15,217,711.00	20.9%
H. Archaeological sites	43,839,749.00	73,199,174.00	70,545,865.00	83,524,829.00	18.4%

(1) Flat rate ticket, valid both for the museum and the archaeological site

(2) From May 2017 onwards, the data for the number of tickets in the archaeological site of the Acropolis of Athens include the tickets of the Ancient Theatre of Dionysos, therefore the data for the years 2016-2017 are not comparable.

EXPLANATORY NOTES

Survey on Museums and Archaeological Sites Attendance	The Survey on Museums and Archaeological Sites Attendance has been producing results since 1970, The survey collects data from the Archaeological Receipts Fund (ARF) of the Ministry of Culture and Sports concerning the number of visitors and the receipts from the tickets sold in the Museums and Archaeological sites of the country.
Legal Framework	The corresponding data for the Acropolis Museum are available from December 2009 onwards.
Legal Framework	The survey is conducted since 1970 on a regular basis and it produces results on a monthly and yearly basis, in compliance with the Joint Ministerial Decision 15189/B379/73.

Reference Period 01/10/2017 to 31/10/2017.

Methodology and Definitions The Survey is conducted on a monthly basis from data collected from the Archaeological Receipts Fund (ARF) of the Ministry of Culture and Sports concerning on the number of visitors and the receipts from the tickets sold in the Museums and Archaeological sites of the country, ELSTAT tabulates the data on Museums and the Archaeological sites for the whole of the Country, by month and by year.

Information on ticket payment

- From January 2002 onwards, the number of Museums' visitors includes both the visitors who have bought a ticket and the visitors with free admission ticket, From 16-06-1996 onwards, the Museums and the Archaeological sites all over Greece have a paid admission for all the visitors, Greeks and foreigners, all over the year, except in the following days, which are free admission days:
- National Holidays (25th of March and 28th of October)
- The first Sunday every month during the five month period from 1 November to 31 March
- The 6th of March (in memory of Melina Merkouri)
- The 18th of April (International Monuments Day)
- The 18th of May (International Museums Day)
- The 5th of June (International Environment Day)
- The last weekend of September, annually (European Heritage Days)

Free admission tickets

The admission to Museums and Archaeological site is free for:

- Young people from EU-countries aged under 18 years, with current identification card to confirm their age,
- Students of Universities and of Higher and Technical Education Institutions or equivalent institutions of EU-countries, as well as of Tour Guide Training Institutes, with valid student identification card or International Student Identity Card (ISIC)
- Employees of the Hellenic Ministry of Culture, with valid professional identity card
- ICOM and ICOMOS cardholders
- Tour Guides with their current working identification card from the Ministry of Development
- Teachers accompanying pupils and students on primary, secondary and tertiary education institution tours
- Journalists with valid journalists' identification card
- Members of Associations and Societies of Friends of Museums and Archaeological Sites
- Official guests of the Greek Government, after relevant approval
- Escorts of blind persons and persons with disabilities
- Free admission cardholders
- Holders of the Culture Card

Number of flat rate tickets

From April 1999 onwards, in some museums and the nearby archaeological sites, in addition to the ordinary ticket, a new "flat rate ticket" was established, which is valid for both the museum and the nearby archaeological site. The total number of these flat rate tickets for **October 2017** was **102,712**.

More information on the Survey on Museums and Archaeological Sites Attendance and detailed time series are available on: <http://www.statistics.gr/en/statistics/-/publication/SCI21/>