



PRESS RELEASE

ARRIVALS AND NIGHTS SPENT IN HOTELS, SIMILAR ESTABLISHMENTS AND TOURIST CAMPSITES: January – September 2017 (provisional data)

According to the results of the Survey on Arrivals and Nights Spent in Hotels, Similar Establishments and Tourist Campsites, conducted by the Hellenic Statistical Authority (ELSTAT) for the period January – September 2017, the arrivals of guests, for the above-mentioned establishments, amounted to 17,543,443 while the nights spent amounted to 75,763,434. The corresponding arrivals for the same period of 2016, amounted to 16,597,429 while the nights spent amounted to 72,450,818 (Tables 1 and 2, Graph 2)⁽¹⁾.

During the period January – September 2017, the largest share of arrivals and nights spent in hotels, similar establishments and tourist campsites, was recorded by non-residents, i.e. 72.7% of arrivals and 84.4% of nights spent (Graph 3).

For the same period, the average number of nights spent per person amounted to 4.3 nights. More specifically, the average number of nights spent was 5.0 nights for non-residents and 2.5 nights for residents (Graph 4). The average number of nights spent, for the same period of 2016, was 4.4 nights (5.1 for non-residents and 2.5 for residents).

The total occupancy of the bed places in hotels and similar establishments (excluding tourist campsites), which is based on the nights spent compared to the bed places that were in operation, amounted to 55.3% during January – September 2017, compared with 54.1% in the corresponding period of 2016 (Table 3, Graph 5).

(1) The data of 2017 refer to 80.2% of the total available bed places.

Information:

Trade and Services Statistics Division
Tourism Statistics Section
Asimina Katri, Marianna Apartoglou
Tel.: +30 213 135 2168, 213 135 2942
Fax: +30 213 135 2947
e-mail: tourism.sector@statistics.gr

Table 1. Arrivals of residents and non-residents at hotels, similar establishments and tourist campsites, by month, January – September 2016 and 2017*

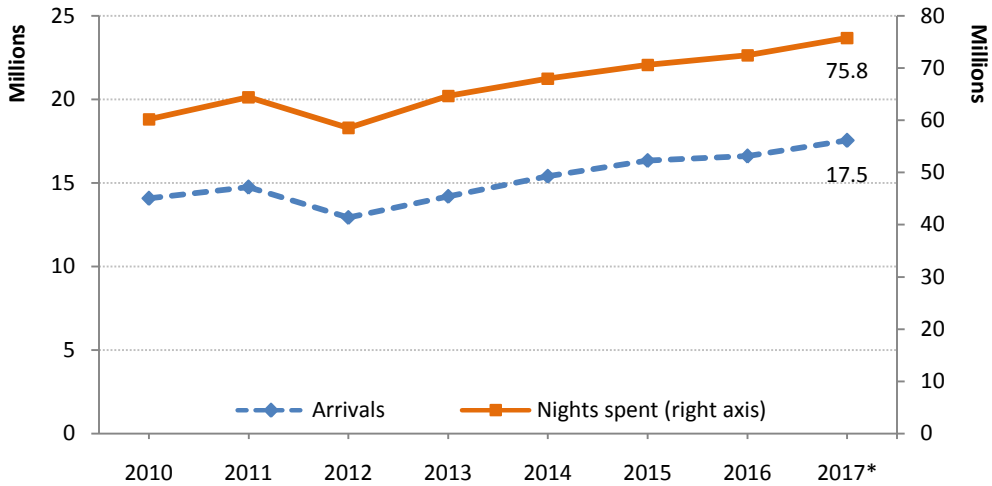
Month	2016					2017*				
	Total Arrivals	Hotels and similar establishments		Tourist campsites		Total Arrivals	Hotels and similar establishments		Tourist campsites	
		Residents	Non-residents	Residents	Non-residents		Residents	Non-residents	Residents	Non-residents
Jan - Sep	16,597,429	4,760,169	11,501,190	140,611	195,459	17,543,443	4,651,865	12,536,202	131,354	224,022
January	513,196	364,203	148,752	98	143	509,181	346,614	162,341	61	165
February	499,200	336,034	162,927	121	118	557,905	379,628	177,962	89	226
March	753,613	464,676	288,421	185	331	739,646	459,540	279,702	78	326
April	1,148,953	535,009	610,614	601	2,729	1,295,881	525,855	764,813	616	4,597
May	1,999,717	466,895	1,514,124	3,763	14,935	2,202,088	464,559	1,713,072	4,604	19,853
June	2,570,086	569,128	1,956,473	18,712	25,773	2,836,452	546,682	2,245,380	12,968	31,422
July	3,219,993	711,432	2,402,993	47,582	57,986	3,343,878	679,086	2,558,648	45,251	60,893
August	3,272,345	773,151	2,368,969	63,595	66,630	3,364,368	729,783	2,500,251	60,827	73,507
September	2,620,326	539,641	2,047,917	5,954	26,814	2,694,044	520,118	2,134,033	6,860	33,033

Table 2. Nights spent of residents and non-residents in hotels, similar establishments and tourist campsites, by month, January – September 2016 and 2017*

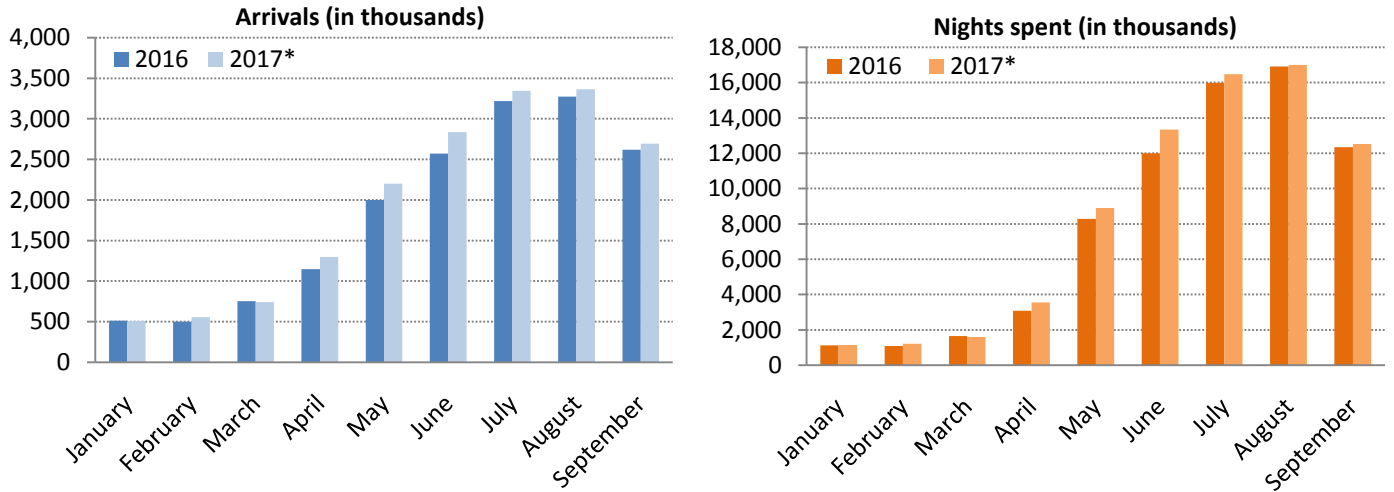
Month	2016					2017*				
	Total Nights spent	Hotels and similar establishments		Tourist campsites		Total Nights spent	Hotels and similar establishments		Tourist campsites	
		Residents	Non-residents	Residents	Non-residents		Residents	Non-residents	Residents	Non-residents
Jan - Sep	72,450,818	11,431,279	59,419,149	828,905	771,485	75,763,434	11,063,182	63,136,418	728,060	835,774
January	1,128,462	741,195	386,020	205	1,042	1,146,580	707,587	437,248	1,030	715
February	1,087,741	666,883	419,945	265	648	1,221,289	764,635	455,300	767	587
March	1,644,852	912,129	731,313	498	912	1,586,257	893,660	690,549	916	1,132
April	3,073,955	1,094,376	1,969,720	2,645	7,214	3,556,775	1,133,731	2,410,412	2,315	10,317
May	8,275,650	1,007,394	7,166,617	48,002	53,637	8,894,638	935,259	7,862,742	38,950	57,687
June	12,000,708	1,257,847	10,520,651	120,614	101,596	13,346,392	1,229,060	11,914,043	88,133	115,156
July	15,980,756	1,950,739	13,537,738	262,542	229,737	16,479,198	1,858,932	14,162,696	221,503	236,067
August	16,917,825	2,567,372	13,740,446	340,803	269,204	17,004,904	2,358,645	14,038,172	320,022	288,065
September	12,340,869	1,233,344	10,946,699	53,331	107,495	12,527,401	1,181,673	11,165,256	54,424	126,048

*provisional data

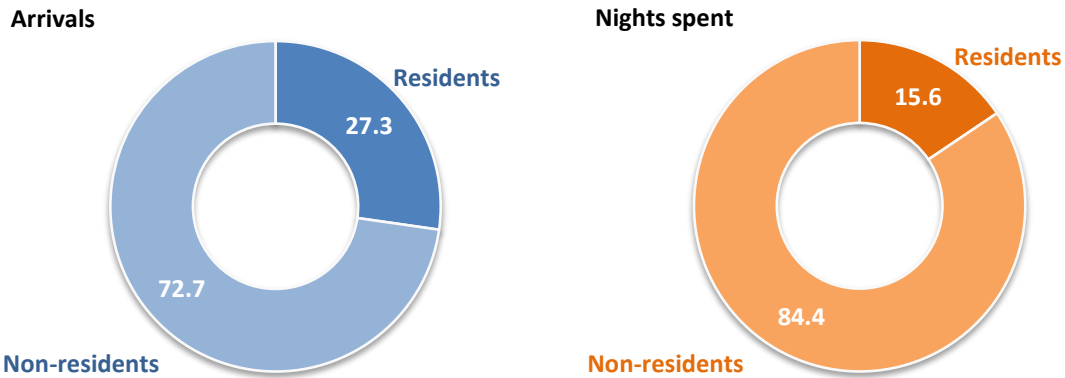
Graph 1. Arrivals and nights spent in hotels, similar establishments and tourist campsites, 9-month period of January to September 2010 – 2017*



Graph 2. Arrivals and nights spent of residents and non-residents in hotels, similar establishments and tourist campsites, by month, January – September 2016 and 2017*



Graph 3. Percentage distribution (%) of arrivals and nights spent in hotels, similar establishments and tourist campsites, January – September 2017*



*provisional data

Graph 4. Average nights spent per guest in hotels, similar establishments and tourist campsites, by month, January – September 2017*

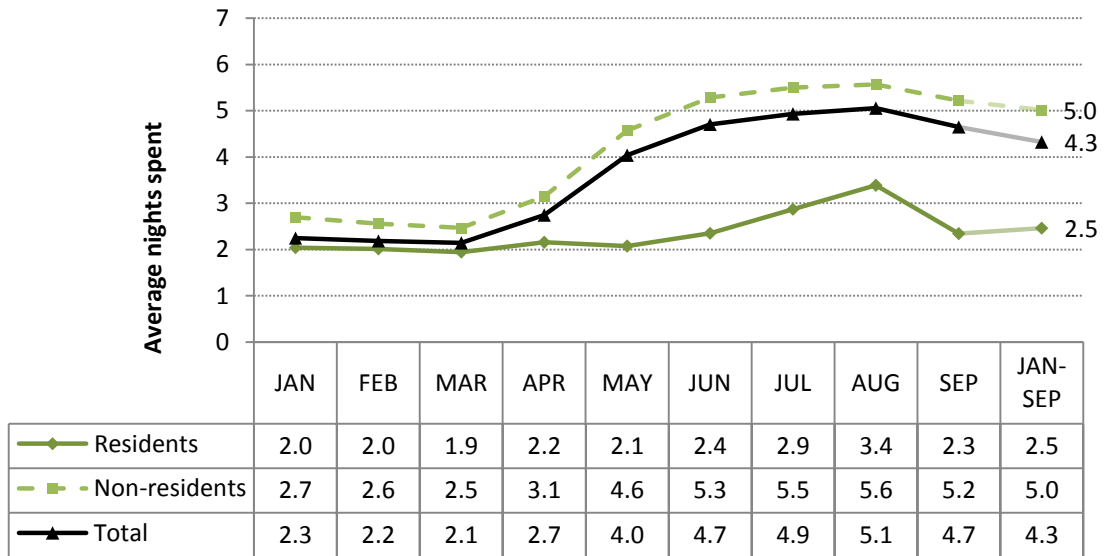
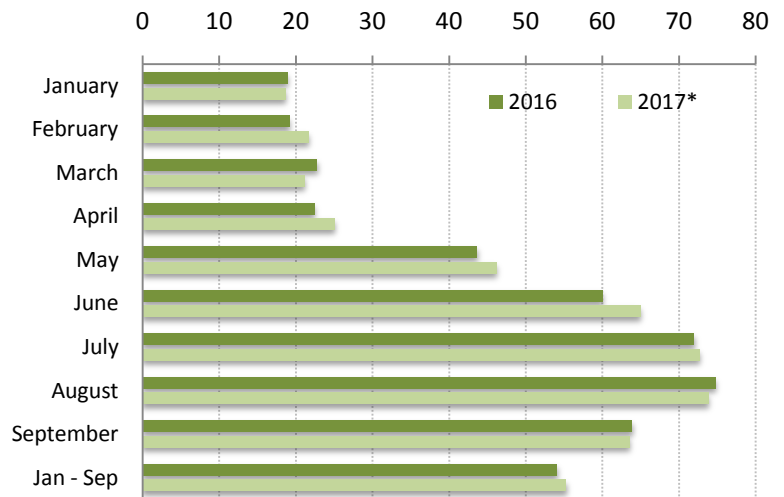


Table 3. Occupancy of the bed-places that were in operation in hotels and similar establishments, by month, January – September 2016 and 2017*

Month	2016	2017*
Jan - Sep	54.1	55.3
January	19.0	18.7
February	19.2	21.7
March	22.8	21.2
April	22.5	25.1
May	43.7	46.2
June	60.1	65.0
July	72.0	72.7
August	74.8	73.9
September	63.9	63.6

Graph 5. Occupancy of the bed-places that were in operation in hotels and similar establishments, by month, January – September 2016 and 2017*



*provisional data

EXPLANATORY NOTES

Arrivals and nights spent at hotels, similar establishments and tourist campsites	Data on arrivals and nights spent at hotels, similar establishments and tourist campsites are collected from a monthly census survey. Each establishment fills in a questionnaire, for every month that it is in operation. It is mandatory for all hotels, similar establishments and tourist campsites to participate in the survey.
Legal frame	The survey is conducted pursuant to Regulation 692/2011 of the European Parliament and of the Council.
Reference unit	Data refer to all establishments (hotels, similar establishments and tourist campsites) that are registered in the Hellenic Chamber of Hotels. ELSTAT receives the register every three months and subsequently it updates its register that is related to the survey.
Coverage	The results of the survey refer to about 80% of the total bed-places that are available. The reason why there is no estimation and projection of the results to 100% of the reference population is the fact that there is no information on the exact months during which each establishment is in operation. The lack of this information makes it impossible to make this estimation for every month and hence for the total of the year.
Data dissemination	Final annual data are published in July of the following year. As regards the annual data there is a press release and detailed tables.
Reference period	January - September 2017
Definitions	<p><u>Resident</u>: every person, regardless of citizenship, that has resided in Greece for at least a year, or has arrived in Greece with the intention to reside in the country for at least 1 year.</p> <p><u>Non-resident</u>: every person, regardless of citizenship, that is not considered to be resident.</p> <p><u>Arrivals</u>: The arrivals at the establishments are calculated for every person separately. The data refer to the total number of persons and not to the total number of rooms that were occupied. Only the persons that had at least one overnight stay at the establishment are counted.</p> <p><u>Nights spent</u>: The nights are calculated for every person separately. The data refer to the total number of nights spent by every person and not to the total number of nights spent in every room.</p> <p><u>Occupancy of bed-places</u>: The monthly occupancy of bed-places is calculated on the basis of the number of the bed-places, as reported by each establishment. The rate refers to the occupancy that was accomplished, as compared with the maximum occupancy that is expected according to the available bed-places.</p> <p>The occupancy of the period is the result of the average occupancy rates of every month of the period, weighted by the bed-places that were in operation for each month.</p>
Methodology	<p>This is a monthly census survey. The data come from the establishments, which fill in a questionnaire (by paper form or on-line application) for every month that each establishment is in operation. During the year ELSTAT updates regularly the register of the hotels, similar establishments and tourist campsites, so that the data refer to the actual number of establishments that are in operation. Moreover, regular reminders for the submission of the data are sent to the establishments, so as ELSTAT can gather as much data as possible.</p> <p>The provisional data, for the period January - September, are based on the data collected from the establishments that responded to the survey and on the estimation of the arrivals and nights spent, taking into account the trend derived from a common sample of establishments and campsites in comparison with the previous year.</p>
References	More information on the survey is available on the web-page of the Hellenic Statistical Authority (www.statistics.gr). Section: Industry, Commerce, Services, Transportations, Tourism, "Hotels, similar establishments and campsites occupancy".