



INDUSTRIAL PRODUCTION INDEX: February 2024, y-o-y increase of 1.6%

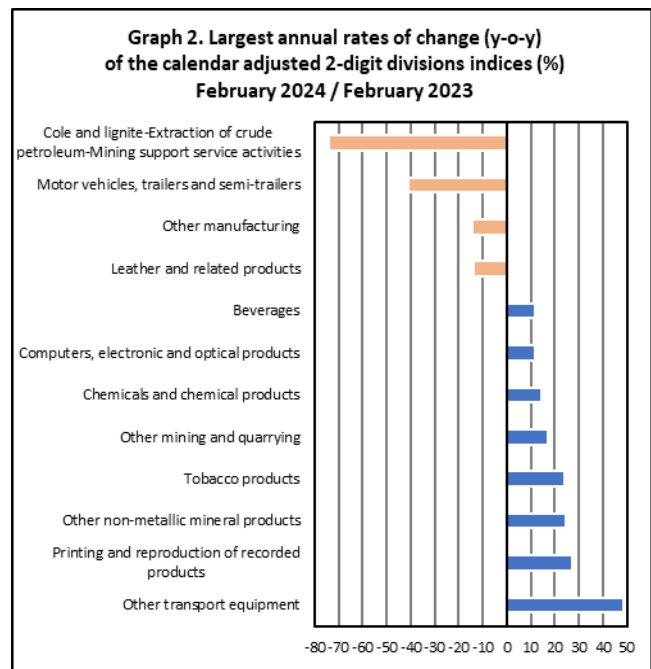
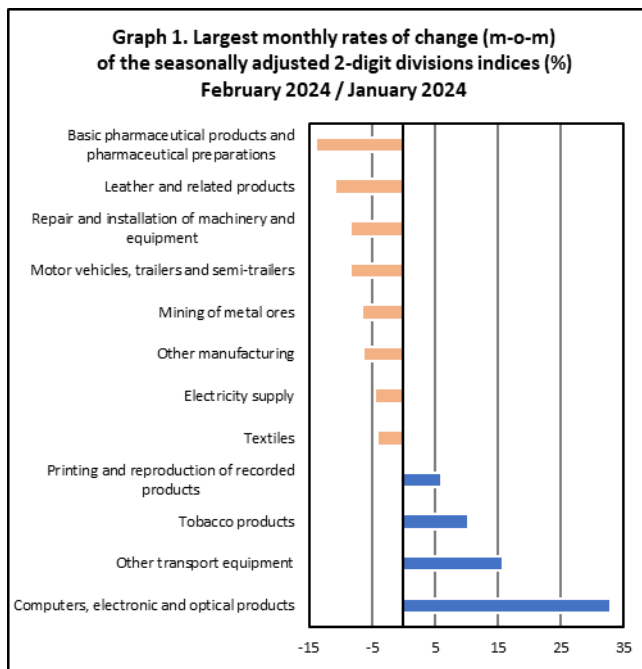
The Hellenic Statistical Authority announces the Industrial Production Index (IPI) with base year 2015=100.0 for February 2024, the evolution of which, on the basis of provisional and working day adjusted data, is as follows:

The Overall Industrial Production Index in February 2024 recorded an increase of 1.6% compared with February 2023. The Overall IPI in February 2023 increased by 5.3% compared with the corresponding index in February 2022 (Table 1).

The average Overall Industrial Production Index for the period from January to February 2024 recorded an increase of 5.6% compared with the average IPI of the period from January to February 2023 (Table 2).

The seasonally adjusted Overall Industrial Production Index in February 2024 recorded a decrease of 1.7% compared with the corresponding index of January 2024 (Table 4).

The index of basic pharmaceutical products and pharmaceutical preparations division showed the greatest percentage decrease, whereas the index of computers, electronic and optical products division recorded the greatest percentage increase in February 2024 compared with January 2024. Comparing the indices of February 2024 with the corresponding indices of February 2023, the greatest percentage increase was recorded in other transport equipment division, while the highest percentage decrease was recorded in mining of coal and lignite – extraction of crude petroleum and natural gas – mining support service activities divisions (Tables 1 and 4).



Information on methodological issues:

Business Statistics Division
Manufacture-Construction Indices and Industrial Products Section
Head of the Section: Diamantaki Aikaterini
Tel: +30 213 135 2056
E-mail: a.diamantaki@statistics.gr

Information on data provision:

Tel: +30 213 135 2023, 2308, 2310
E-mail: data.dissem@statistics.gr

Evolution of the Industrial Production Index in February 2024

I. Annual changes: February 2024 / February 2023 (Table 1)

The 1.6% increase of the working day adjusted Overall IPI in February 2024, compared with the corresponding index in February 2023, is due to the annual changes of the sub-indices in the following industrial sections:

Increase of:

- 10.2% in the Mining and Quarrying Index. The increase was the result of the annual changes of the sub-indices in the following 2-digit divisions: other mining and quarrying, mining of metal ores.
- 3.3% in the Water Supply Index.
- 2.1% in the Manufacturing Index. The increase was mainly the result of the annual changes of the sub-indices in the following 2-digit divisions: other transport equipment, printing and reproduction of recorded products, other non metallic mineral products, tobacco products, chemicals and chemical products.

Decrease of:

- 1.4% in the Electricity Supply Index.

II. Rates of change of the average index of the period January - February 2024 compared with the corresponding index of the period January - February 2023 (Table 2)

The 5.6% increase of the working day adjusted average Overall IPI in the 2-month period January - February 2024, compared with the corresponding index in January - February 2023, is due to the corresponding rates of change of the sub-indices in the following industrial sections:

Increase of:

- 14.6% in the Electricity Supply Index.
- 8.6% in the Mining and Quarrying Index
- 3.6% in the Manufacturing Index.
- 3.1% in the Water Supply Index.

III. Monthly changes: February 2024 / January 2024 (Table 4)

The 1.7% decrease of the seasonally adjusted Overall IPI in February 2024, compared with the corresponding index in January 2024 is due to the monthly changes of the sub-indices in the following industrial sections:

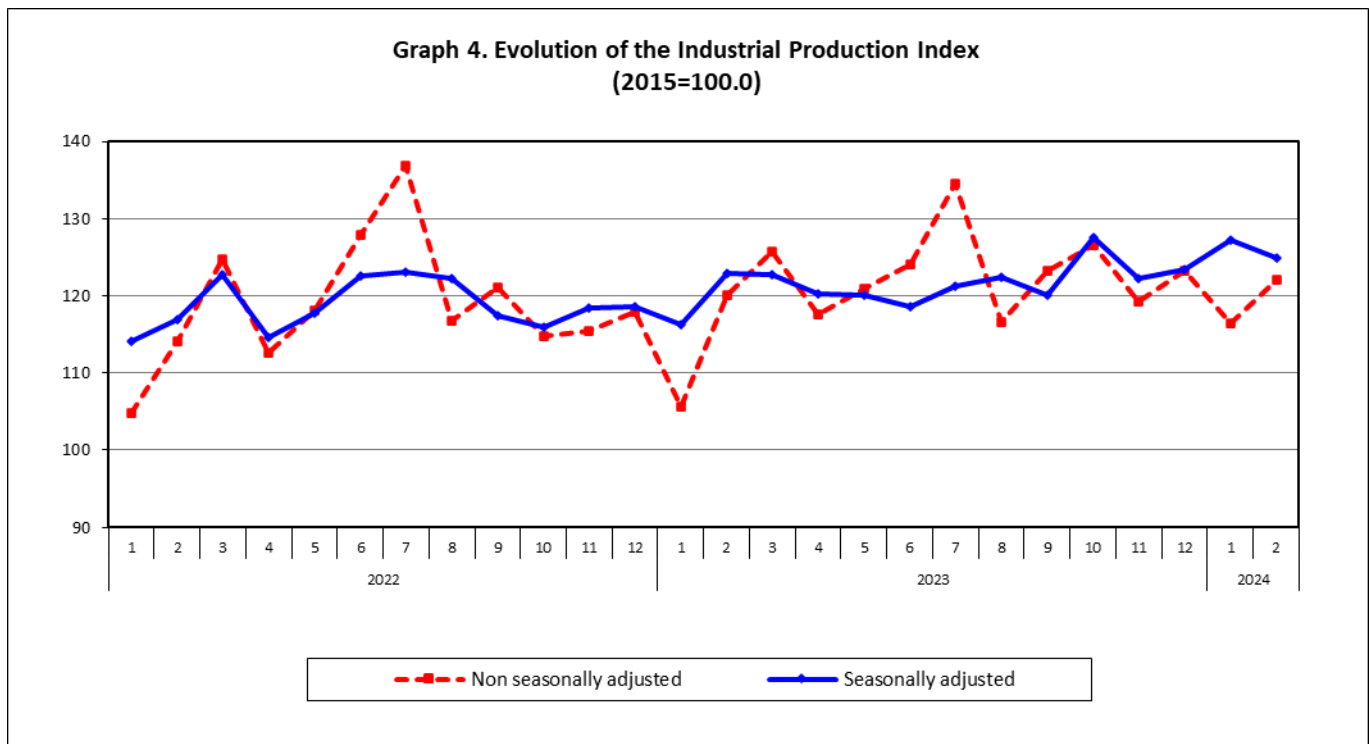
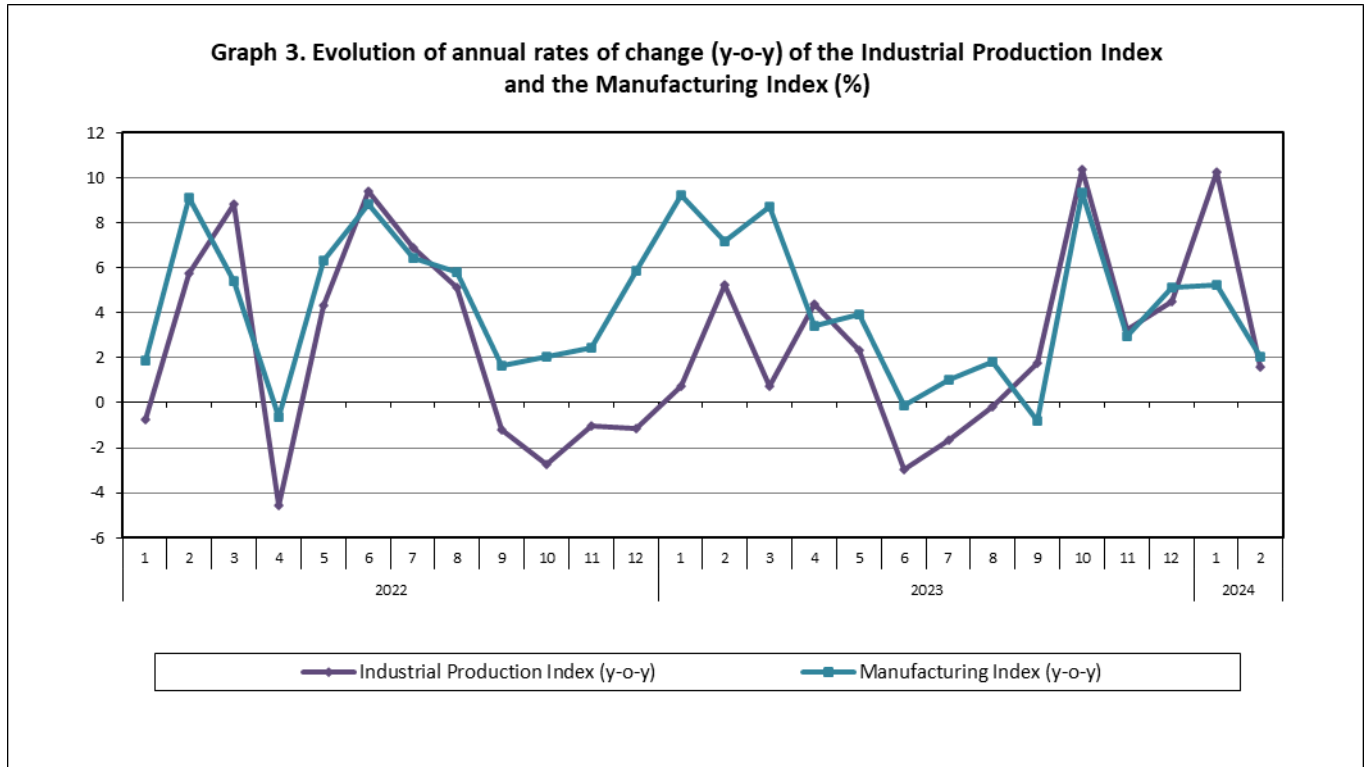
Decrease of:

- 4.5% in the Electricity Supply Index.
- 2.4% in the Mining and Quarrying Index.
- 0.9% in the Manufacturing Index.

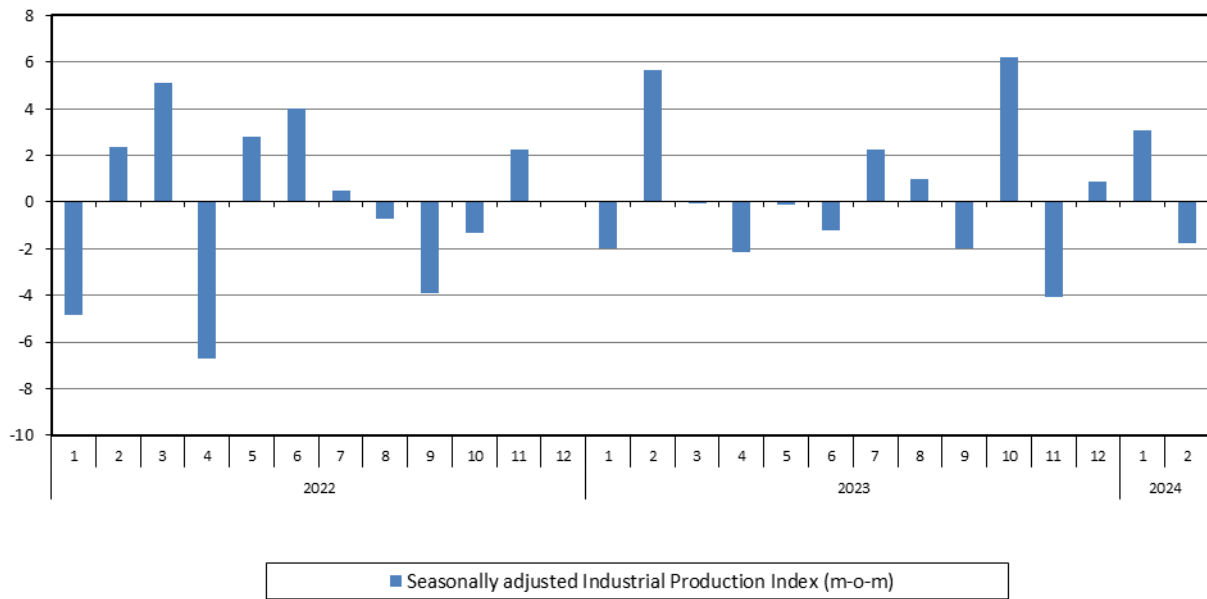
Increase of:

- 1.9% in the Water Supply Index.

The following graphs depict the annual rates of change (y-o-y) of the Industrial Production Index and the Manufacturing Index, the evolution of the seasonally and non-seasonally adjusted Overall Industrial Production Index, as well as the monthly rates of change (m-o-m) of the seasonally adjusted index.



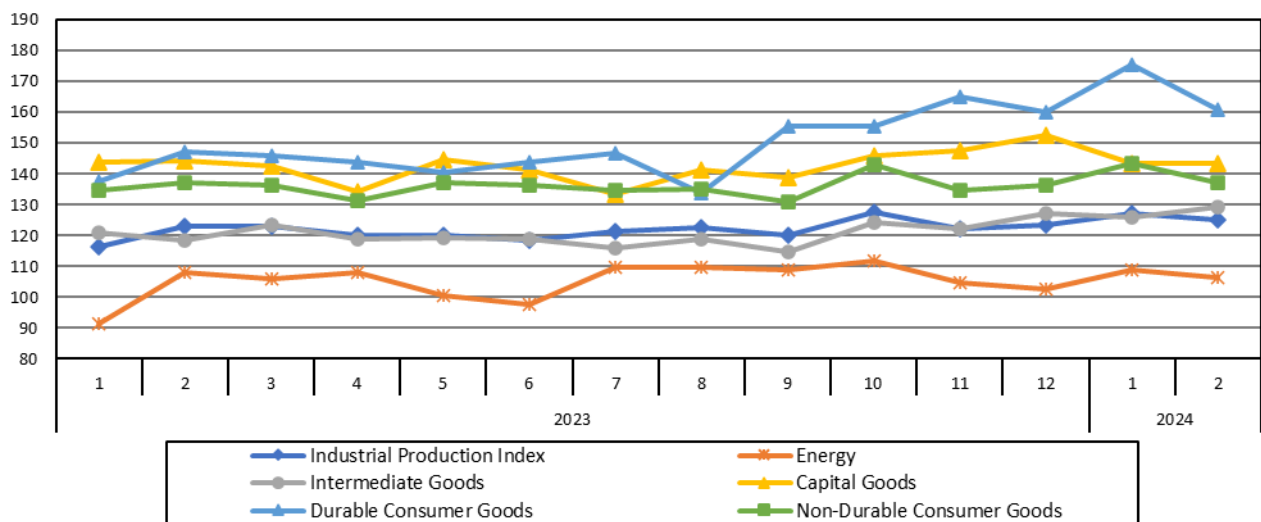
Graph 5. Evolution of the monthly rates of change (m-o-m) of the seasonally adjusted Industrial Production Index (%)



It should be noted that the time series with the seasonally adjusted indices is recalculated every time a new observation is added in the time series. Therefore, the seasonally adjusted data differ from the data published in the previous Announcement.

The following graphs depict the evolution of the seasonally adjusted Industrial Production Index and the Main Industrial Groupings, as well as the evolution of the Industrial Production Index and the Industrial Sections Indices.

Graph 6. Evolution of the seasonally adjusted Industrial Production Index and the Main Industrial Groupings Indices, January 2023 - February 2024 (2015=100.0)



Graph 7. Evolution of the Industrial Production Index and the Industrial Section Indices (2015=100.0)

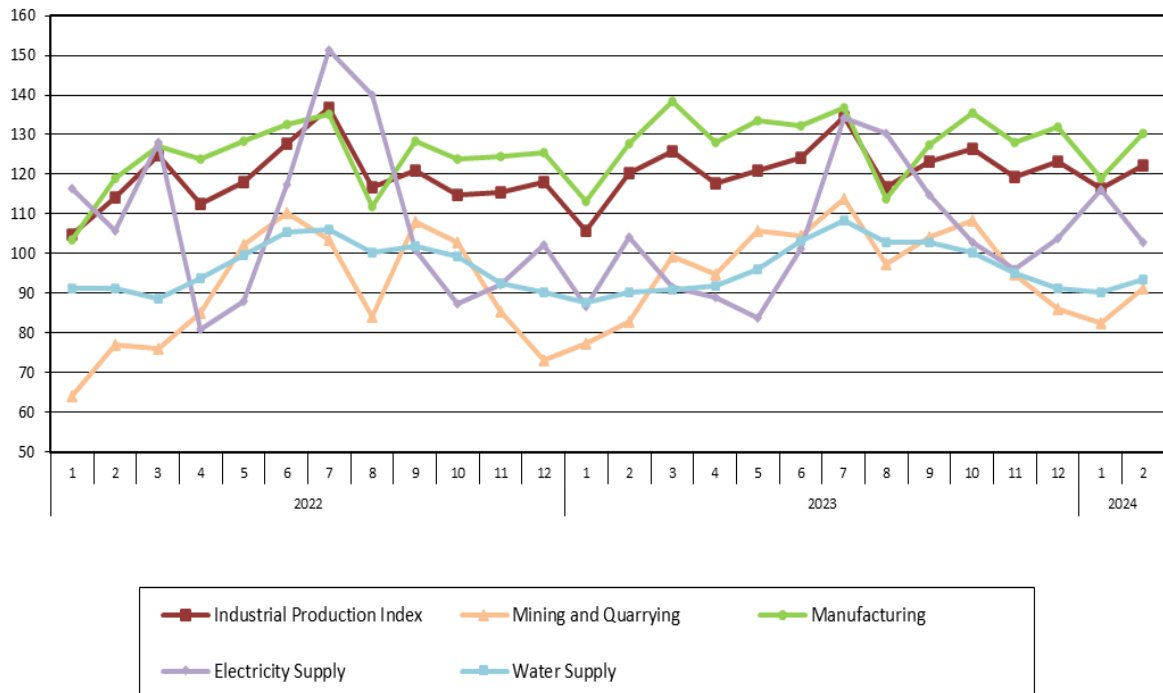


Table 1. Annual rates of change of the Industrial Production Index*(Working day adjusted data, according to the real number of working days)*

Base year: 2015=100.0

Code	Division	February			Rate of change (%)	
		2024*	2023*	2022	2024/2023	2023/2022
OVERALL INDEX		122.10	120.18	114.17	1.6	5.3
B	MINING AND QUARRYING	91.15	82.75	77.13	10.2	7.3
05-06-09	Mining of coal and lignite – Extraction of crude petroleum and natural gas – Mining support service activities	10.00	38.31	26.38	-73.9	45.2
07	Mining of metal ores	129.13	118.98	103.09	8.5	15.4
08	Other mining and quarrying	90.01	76.81	75.66	17.2	1.5
C	MANUFACTURING	130.25	127.60	119.04	2.1	7.2
10	Food	110.12	112.12	105.76	-1.8	6.0
11	Beverages	94.27	84.48	91.15	11.6	-7.3
12	Tobacco products	168.43	136.09	126.87	23.8	7.3
13	Textiles	109.99	123.20	123.56	-10.7	-0.3
14	Wearing apparel	71.52	79.84	85.60	-10.4	-6.7
15	Leather and related products	77.45	89.76	79.76	-13.7	12.5
16	Wood and products of wood and cork, except furniture	111.17	106.21	92.19	4.7	15.2
17	Paper and paper products	114.75	115.55	125.06	-0.7	-7.6
18	Printing and reproduction of recorded products	143.96	113.36	141.18	27.0	-19.7
19	Coke and refined petroleum products	118.67	122.22	100.42	-2.9	21.7
20	Chemicals and chemical products	138.05	120.78	132.49	14.3	-8.8
21	Basic pharmaceutical products and pharmaceutical preparations	274.14	297.27	216.11	-7.8	37.6
22	Rubber and plastic products	127.47	125.65	136.45	1.4	-7.9
23	Other non-metallic mineral products	144.02	115.82	115.21	24.3	0.5
24	Basic metals	134.82	131.43	138.42	2.6	-5.0
25	Fabricated metal products, except machinery and equipment	135.84	122.75	122.94	10.7	-0.2
26	Computers, electronic and optical products	337.05	301.02	182.56	12.0	64.9
27	Electrical equipment	145.30	131.63	146.45	10.4	-10.1
28	Machinery and equipment n. e. c.	127.01	140.02	127.69	-9.3	9.7
29	Motor vehicles, trailers and semi-trailers	112.75	192.02	131.66	-41.3	45.9
30	Other transport equipment	59.44	40.06	49.09	48.4	-18.4
31	Furniture	133.10	124.31	125.50	7.1	-0.9
32	Other manufacturing	104.16	121.89	111.91	-14.5	8.9
33	Repair and installation of machinery and equipment	80.68	87.89	87.30	-8.2	0.7
D	ELECTRICITY SUPPLY	102.74	104.23	105.74	-1.4	-1.4
35	Electricity supply	102.74	104.23	105.74	-1.4	-1.4
E	WATER SUPPLY	93.33	90.32	91.19	3.3	-1.0
36	Water collection, treatment and supply	93.33	90.32	91.19	3.3	-1.0
MAIN INDUSTRIAL GROUPINGS						
1	Energy	106.59	108.47	102.45	-1.7	5.9
2	Intermediate goods	127.87	117.07	121.20	9.2	-3.4
3	Capital goods	130.40	131.77	118.12	-1.0	11.6
4	Consumer Durables	134.27	122.87	105.95	9.3	16.0
5	Consumer Non-Durables	133.54	133.53	122.24	0.0	9.2

* Provisional data

Note: The indices are rounded up to two decimal digits when published and percentage changes up to one decimal digit when published.

Table 2. Average indices of the period January – February and rates of change of the Industrial Production Index
(Working day adjusted data, according to the real number of working days)

Base year: 2015=100.0

Code	Division	Average indices of the period Jan.-Feb.			Rate of change (%)	
		2024*	2023*	2022	2024/2023	2023/2022
OVERALL INDEX		119.27	112.90	109.52	5.6	3.1
B	MINING AND QUARRYING	86.91	80.02	70.63	8.6	13.3
05-06-09	Mining of coal and lignite – Extraction of crude petroleum and natural gas – Mining support service activities	12.30	29.78	21.54	-58.7	38.2
07	Mining of metal ores	125.89	117.32	89.53	7.3	31.0
08	Other mining and quarrying	84.46	74.57	71.34	13.3	4.5
C	MANUFACTURING	124.62	120.33	111.28	3.6	8.1
10	Food	107.88	106.12	101.32	1.7	4.7
11	Beverages	85.48	78.67	80.71	8.7	-2.5
12	Tobacco products	156.12	135.10	109.88	15.6	23.0
13	Textiles	105.01	109.34	112.09	-4.0	-2.5
14	Wearing apparel	66.16	76.36	75.92	-13.3	0.6
15	Leather and related products	66.88	72.11	58.37	-7.2	23.5
16	Wood and products of wood and cork, except furniture	98.24	94.01	86.27	4.5	9.0
17	Paper and paper products	113.14	112.41	118.90	0.7	-5.5
18	Printing and reproduction of recorded products	133.34	118.87	125.24	12.2	-5.1
19	Coke and refined petroleum products	117.94	118.12	104.42	-0.2	13.1
20	Chemicals and chemical products	130.07	114.88	117.29	13.2	-2.1
21	Basic pharmaceutical products and pharmaceutical preparations	288.06	281.10	202.78	2.5	38.6
22	Rubber and plastic products	121.47	117.92	124.90	3.0	-5.6
23	Other non-metallic mineral products	132.39	109.85	109.68	20.5	0.2
24	Basic metals	128.90	130.94	130.75	-1.6	0.1
25	Fabricated metal products, except machinery and equipment	123.82	112.20	109.93	10.4	2.1
26	Computers, electronic and optical products	260.63	254.26	160.17	2.5	58.7
27	Electrical equipment	135.76	129.26	137.28	5.0	-5.8
28	Machinery and equipment n. e. c.	106.98	113.64	102.44	-5.9	10.9
29	Motor vehicles, trailers and semi-trailers	94.52	145.99	105.48	-35.3	38.4
30	Other transport equipment	48.46	37.05	43.44	30.8	-14.7
31	Furniture	113.41	108.40	102.29	4.6	6.0
32	Other manufacturing	104.00	116.13	104.46	-10.4	11.2
33	Repair and installation of machinery and equipment	78.14	80.15	73.64	-2.5	8.9
D	ELECTRICITY SUPPLY	109.40	95.43	111.14	14.6	-14.1
35	Electricity supply	109.40	95.43	111.14	14.6	-14.1
E	WATER SUPPLY	91.76	88.97	91.15	3.1	-2.4
36	Water collection, treatment and supply	91.76	88.97	91.15	3.14	-2.4
MAIN INDUSTRIAL GROUPINGS						
1	Energy	110.09	101.87	106.82	8.1	-4.6
2	Intermediate goods	119.46	111.73	112.91	6.9	-1.0
3	Capital goods	114.78	115.62	100.26	-0.7	15.3
4	Consumer Durables	122.75	104.22	89.59	17.8	16.3
5	Consumer Non-Durables	131.19	126.86	113.60	3.4	11.7

* Provisional data

Note: The indices are rounded up to two decimal digits when published and percentage changes up to one decimal digit when published.

Table 3. Monthly rate of change of the Industrial Production Index*(Working day adjusted data, according to the real number of working days)***Base year: 2015=100.0**

Code	Division	February 2024*	January 2024**	Rate of change (%) Feb. 2024/Jan. 2024
OVERALL INDEX		122.10	116.44	4.9
B	MINING AND QUARRYING	91.15	82.66	10.3
05-06-09	Mining of coal and lignite – Extraction of crude petroleum and natural gas – Mining support service activities	10.00	14.59	-31.5
07	Mining of metal ores	129.13	122.64	5.3
08	Other mining and quarrying	90.01	78.91	14.1
C	MANUFACTURING	130.25	119.00	9.5
10	Food	110.12	105.65	4.2
11	Beverages	94.27	76.70	22.9
12	Tobacco products	168.43	143.81	17.1
13	Textiles	109.99	100.04	9.9
14	Wearing apparel	71.52	60.81	17.6
15	Leather and related products	77.45	56.32	37.5
16	Wood and products of wood and cork, except furniture	111.17	85.32	30.3
17	Paper and paper products	114.75	111.54	2.9
18	Printing and reproduction of recorded products	143.96	122.71	17.3
19	Coke and refined petroleum products	118.67	117.21	1.2
20	Chemicals and chemical products	138.05	122.08	13.1
21	Basic pharmaceutical products and pharmaceutical preparations	274.14	301.98	-9.2
22	Rubber and plastic products	127.47	115.48	10.4
23	Other non-metallic mineral products	144.02	120.76	19.3
24	Basic metals	134.82	122.97	9.6
25	Fabricated metal products, except machinery and equipment	135.84	111.81	21.5
26	Computers, electronic and optical products	337.05	184.20	83.0
27	Electrical equipment	145.30	126.22	15.1
28	Machinery and equipment n. e. c.	127.01	86.96	46.1
29	Motor vehicles, trailers and semi-trailers	112.75	76.28	47.8
30	Other transport equipment	59.44	37.48	58.6
31	Furniture	133.10	93.72	42.0
32	Other manufacturing	104.16	103.84	0.3
33	Repair and installation of machinery and equipment	80.68	75.61	6.7
D	ELECTRICITY SUPPLY	102.74	116.07	-11.5
35	Electricity supply	102.74	116.07	-11.5
E	WATER SUPPLY	93.33	90.19	3.5
36	Water collection, treatment and supply	93.33	90.19	3.5
MAIN INDUSTRIAL GROUPINGS				
1	Energy	106.59	113.59	-6.2
2	Intermediate goods	127.87	111.06	15.1
3	Capital goods	130.40	99.17	31.5
4	Consumer Durables	134.27	111.24	20.7
5	Consumer Non-Durables	133.54	128.84	3.6

* Provisional data **Revised data

Note: The indices are rounded up to two decimal digits when published and percentage changes up to one decimal digit when published.

Table 4. Monthly rate of change of the seasonally adjusted Industrial Production Index

Base year: 2015=100.0

Code	Division	February 2024	January 2024	Rate of change (%) Feb. 2024 / Jan. 2024
OVERALL INDEX		124.93	127.16	-1.7
B	MINING AND QUARRYING	103.80	106.36	-2.4
05-06-09	Mining of coal and lignite – Extraction of crude petroleum and natural gas – Mining support service activities	-	-	-
07	Mining of metal ores	136.85	146.45	-6.6
08	Other mining and quarrying	110.24	110.51	-0.2
C	MANUFACTURING	133.53	134.79	-0.9
10	Food	115.13	117.89	-2.3
11	Beverages	108.93	107.13	1.7
12	Tobacco products	164.56	149.08	10.4
13	Textiles	103.43	107.95	-4.2
14	Wearing apparel	69.62	68.57	1.5
15	Leather and related products	86.41	96.94	-10.9
16	Wood and products of wood and cork, except furniture	120.06	118.87	1.0
17	Paper and paper products	111.01	111.72	-0.6
18	Printing and reproduction of recorded products	147.98	139.48	6.1
19	Coke and refined petroleum products	116.42	117.18	-0.6
20	Chemicals and chemical products	135.53	138.96	-2.5
21	Basic pharmaceutical products and pharmaceutical preparations	272.30	316.35	-13.9
22	Rubber and plastic products	123.53	126.41	-2.3
23	Other non-metallic mineral products	154.31	148.12	4.2
24	Basic metals	129.66	125.15	3.6
25	Fabricated metal products, except machinery and equipment	148.52	146.49	1.4
26	Computers, electronic and optical products	311.70	234.55	32.9
27	Electrical equipment	148.38	143.41	3.5
28	Machinery and equipment n. e. c.	126.65	128.47	-1.4
29	Motor vehicles, trailers and semi-trailers	128.39	140.14	-8.4
30	Other transport equipment	85.64	73.96	15.8
31	Furniture	158.25	158.17	0.0
32	Other manufacturing	120.90	129.14	-6.4
33	Repair and installation of machinery and equipment	98.24	107.31	-8.5
D	ELECTRICITY SUPPLY	101.76	106.55	-4.5
35	Electricity supply	101.76	106.55	-4.5
E	WATER SUPPLY	100.07	98.19	1.9
36	Water collection, treatment and supply	100.07	98.19	1.9
MAIN INDUSTRIAL GROUPINGS				
1	Energy	106.31	108.91	-2.4
2	Intermediate goods	129.40	125.99	2.7
3	Capital goods	143.53	143.54	0.0
4	Consumer Durables	160.99	175.55	-8.3
5	Consumer Non-Durables	137.24	143.32	-4.2

Notes:

1. The indices are rounded up to two decimal digits when published and percentage changes up to one decimal digit when published.
2. The whole time-series with seasonally adjusted indices is recalculated every time a new observation is added in the time-series.
3. The composed index of divisions 05-06-09 is not seasonally adjusted.

Table 5. Evolution of the Overall Industrial Production Index
(Working day adjusted data, according to the real number of working days)

Base year: 2015=100.0

Year and month	Overall Index	Monthly rate of change (%)	Annual rate of change (%)	12-month average index (moving average)	Rate of change of the 12-month average index (%)
2022: 1	104.88	-12.1	-0.7	115.94	9.7
2	114.17	8.9	5.8	116.46	9.9
3	124.73	9.2	8.8	117.30	10.1
4	112.63	-9.7	-4.6	116.85	7.9
5	118.11	4.9	4.3	117.25	7.1
6	127.84	8.2	9.4	118.17	7.1
7	136.86	7.1	6.9	118.90	7.0
8	116.79	-14.7	5.1	119.38	6.6
9	121.10	3.7	-1.2	119.25	5.6
10	114.71	-5.3	-2.8	118.98	4.0
11	115.41	0.6	-1.0	118.88	3.3
12	117.96	2.2	-1.2	118.77	2.4
Annual average	118.77				
2023*: 1	105.63	-10.5	0.7	118.83	2.5
2	120.18	13.8	5.3	119.33	2.5
3	125.66	4.6	0.7	119.41	1.8
4	117.60	-6.4	4.4	119.82	2.5
5	120.86	2.8	2.3	120.05	2.4
6	124.05	2.6	-3.0	119.73	1.3
7	134.56	8.5	-1.7	119.54	0.5
8	116.61	-13.3	-0.2	119.53	0.1
9	123.27	5.7	1.8	119.71	0.4
10	126.57	2.7	10.3	120.70	1.4
11	119.19	-5.8	3.3	121.01	1.8
12	123.30	3.4	4.5	121.46	2.3
Annual average	121.46				
2024*: 1	116.44	-5.6	10.2	122.36	3.0
2	122.10	4.9	1.6	122.52	2.7

* Provisional data

Note: The indices are rounded up to two decimal digits when published and percentage changes up to one decimal digit when published.

Table 6. Monthly evolution of the seasonally adjusted Overall Industrial Production Index and Main Industrial Groupings

Base year: 2015=100.0

Year and month	Overall Index		Energy		Intermediate goods		Capital goods		Consumer durables		Consumer non-durables		
	Index	Monthly rate of change (%)	Index	Monthly rate of change (%)	Index	Monthly rate of change (%)	Index	Monthly rate of change (%)	Index	Monthly rate of change (%)	Index	Monthly rate of change (%)	
2022:	1	114.14	-4.9	106.17	-6.3	118.85	-3.9	118.95	-7.9	119.13	0.5	118.60	-3.5
	2	116.87	2.4	102.31	-3.6	123.03	3.5	130.08	9.4	126.41	6.1	125.69	6.0
	3	122.82	5.1	120.43	17.7	118.81	-3.4	129.60	-0.4	138.81	9.8	126.22	0.4
	4	114.57	-6.7	99.51	-17.4	118.54	-0.2	130.67	0.8	136.14	-1.9	124.35	-1.5
	5	117.80	2.8	105.10	5.6	119.70	1.0	134.86	3.2	132.86	-2.4	126.41	1.7
	6	122.53	4.0	114.24	8.7	121.22	1.3	139.17	3.2	136.34	2.6	128.48	1.6
	7	123.11	0.5	118.06	3.3	119.51	-1.4	142.17	2.2	132.73	-2.6	126.50	-1.5
	8	122.21	-0.7	115.55	-2.1	121.02	1.3	136.38	-4.1	152.40	14.8	125.92	-0.5
	9	117.46	-3.9	98.65	-14.6	121.41	0.3	141.78	4.0	137.35	-9.9	129.68	3.0
	10	115.89	-1.3	99.15	0.5	116.62	-3.9	138.05	-2.6	148.62	8.2	128.04	-1.3
	11	118.52	2.3	101.19	2.1	117.89	1.1	136.39	-1.2	143.64	-3.4	133.95	4.6
	12	118.59	0.1	100.92	-0.3	120.53	2.2	134.70	-1.2	153.70	7.0	132.39	-1.2
	Annual average	118.71		106.77		119.76		134.40		138.18		127.19	
2023:	1	116.26	-2.0	91.27	-9.6	120.76	0.2	143.79	6.8	137.46	-10.6	134.61	1.7
	2	122.86	5.7	108.22	18.6	118.61	-1.8	144.30	0.4	146.99	6.9	136.98	1.8
	3	122.82	0.0	105.83	-2.2	123.42	4.1	142.60	-1.2	146.02	-0.7	136.50	-0.3
	4	120.22	-2.1	108.04	2.1	118.69	-3.8	134.07	-6.0	143.98	-1.4	131.26	-3.8
	5	120.08	-0.1	100.42	-7.1	119.18	0.4	144.46	7.8	140.67	-2.3	137.06	4.4
	6	118.61	-1.2	97.82	-2.6	118.95	-0.2	141.43	-2.1	143.66	2.1	136.17	-0.6
	7	121.26	2.2	109.67	12.1	116.14	-2.4	133.63	-5.5	146.56	2.0	134.71	-1.1
	8	122.46	1.0	109.79	0.1	118.99	2.5	141.29	5.7	133.73	-8.8	134.94	0.2
	9	120.02	-2.0	108.92	-0.8	114.55	-3.7	138.68	-1.8	155.34	16.2	130.98	-2.9
	10	127.51	6.2	111.63	2.5	124.13	8.4	145.71	5.1	155.31	0.0	143.10	9.3
	11	122.29	-4.1	104.79	-6.1	122.09	-1.6	147.48	1.2	164.93	6.2	134.80	-5.8
	12	123.39	0.9	102.45	-2.2	127.28	4.2	152.45	3.4	159.94	-3.0	136.15	1.0
	Annual average	121.48		104.90		120.23		142.49		147.88		135.60	
2024:	1	127.16	3.1	108.91	6.3	125.99	-1.0	143.54	-5.8	175.55	9.8	143.32	5.3
	2	124.93	-1.7	106.31	-2.4	129.40	2.7	143.53	0.0	160.99	-8.3	137.24	-4.2

Notes:

1. The indices are rounded up to two decimal digits when published and percentage changes up to one decimal digit when published.
2. The whole time-series with seasonally adjusted indices is recalculated every time a new observation is added in the time-series.

METHODOLOGICAL NOTES

Generally	The Industrial Production Index (IPI) in Greece has been compiled by the Hellenic Statistical Authority (ELSTAT) from 1959 onwards.
Purpose of the index	The objective of the index is to compare the magnitude (volume) of the output in the current month in the mining and quarrying, manufacturing, electricity and water supply divisions with the corresponding output of a given fixed period, which is considered as base period. The Industrial Production Index shows the evolution of the value added of the production factors cost, at constant prices.
Legal framework	The compilation of the IPI is based on the framework of the implementation of Council Regulation (EC) No 1165/1998 concerning short-term statistics (STS-R). Furthermore, the IPI is governed by Regulation (EC) No 1893/2006 of the European Parliament and of the Council, by Commission Regulation (EC) No 656/2007, by Council Regulation (EC) No 451/2008, by Regulation (EU) No 2019/2152 of the European Parliament and of the Council on European business statistics, as well as Commission Implementing Regulation (EU) No 2020/1197 laying down technical specifications and arrangements pursuant to Regulation (EU) No 2019/2152.
Reference period	Month.
Base year	2015=100.0.
Revision	The IPI is a fixed base index. The Industrial Production Index was currently revised with new base year 2015 (2015=100.0) according to the provisions of Council Regulation No 1165/1998 concerning short-term statistics. Short-term indices are revised every five (5) years, particularly in calendar years ending in 0 or 5.
Statistical classifications	At the level of branches of economic activities, the statistical classification of economic activities NACE Rev.2 of EU was used (Regulation No 1893/2006), while at the level of main industrial groupings, the allocation of two-digit and three-digit NACE Rev. 2 headings to categories of aggregate classification was used, in accordance with Council Regulation No 656/2007. At product level, the statistical classification CPA 2008 of EU was used, according to Council Regulation No 451/2008.
Geographical coverage	The index covers the whole Country.
Coverage of economic activities	The index covers all the sections of industry, the main industrial groups, as well as all levels of economic activity.
Statistical survey	The data are collected from a sample of 1,263 enterprises. The survey covers 325 products and the measurement of the surveyed products is made in terms of output quantities or in terms of production value or turnover, according to the specific features in each branch of economic activity.
Seasonal adjustment	Seasonal adjustment is the procedure followed to remove the impact of seasonality on the time-series (i.e. the impact of monthly effects, e.g. holidays, tourist period etc.), in order to improve comparability over time. The method applied is TRAMO-SEATS with the use of JDemetra+ 2.0.0. For the seasonal adjustment of the Industrial Production Index at 2-digit level of NACE Rev.2, at section level (B – Mining and Quarrying, C – Manufacturing, D – Electricity and E – Water Supply) and for the Main Industrial Groupings (MIGs), the direct approach is applied, namely each time-series is seasonally adjusted independently. For the overall Industrial Production Index, the indirect approach is applied, with the seasonally adjusted IPI being computed by aggregating the seasonally adjusted MIGs using appropriate weights.
Publication of data	The revised IPI with the new base year 2015 (2015=100.0) is released since July 2019, with May 2019 as the first reference month. Data with base year 2015=100.0 are available from January 2000 onwards.
References	More information about the methodology concerning the compilation and calculation of the index and the time series are available on the website of the Hellenic Statistical Authority (ELSTAT) (http://www.statistics.gr/en/statistics/-/publication/DKT21/-).