



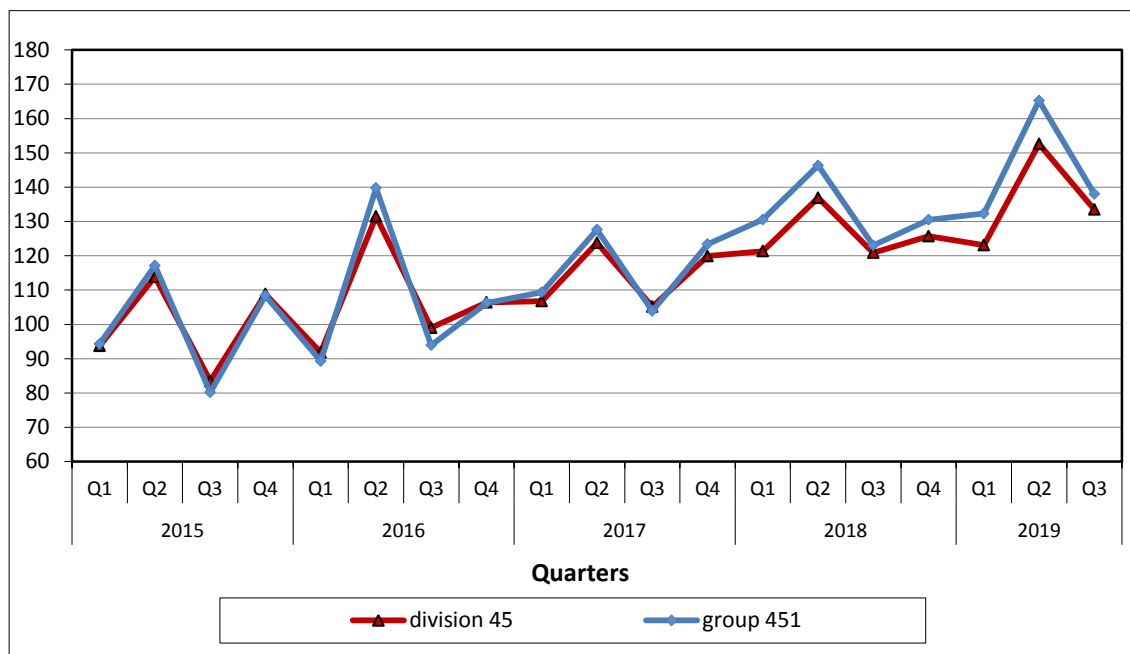
PRESS RELEASE

TURNOVER INDEX FOR MOTOR TRADE: 3rd quarter 2019, annual increase 10.4%

The Hellenic Statistical Authority publishes the Turnover Indices for Motor Trade with base year 2015=100.0 for the 3rd quarter 2019, according to provisional and working day adjusted data, as follows:

- The Turnover Index for Motor Trade in division 45 of NACE Rev. 2 (wholesale and retail trade and repair of motor vehicles and motorcycles) for the 3rd quarter 2019, compared with the corresponding index of the 3rd quarter 2018, increased by 10.4%, while, compared with the corresponding index of the 2nd quarter 2019, decreased by 12.5% (Table 1).
- The Turnover Index for Sale of Motor Vehicles (group 451 of NACE Rev. 2) of the 3rd quarter 2019, compared with the corresponding index of the 3rd quarter 2018, increased by 12.2%, while, compared with the corresponding index of the 2nd quarter 2019, decreased by 16.5% (Table 1).
- The seasonally adjusted Turnover Index for Motor Trade in division 45 of NACE Rev. 2 for the 3rd quarter 2019, compared with the corresponding index of the 2nd quarter 2019, increased by 1.0% (Table 2).
- The seasonally adjusted Turnover Index for Motor Vehicles (group 451 of NACE Rev. 2) for the 3rd quarter 2019, compared with the corresponding index of the 2nd quarter 2019, increased by 1.2% (Table 2).

Graph 1. Evolution of Turnover Indices for Motor Trade in division 45 and group 451 of NACE Rev. 2 (2015=100.0)



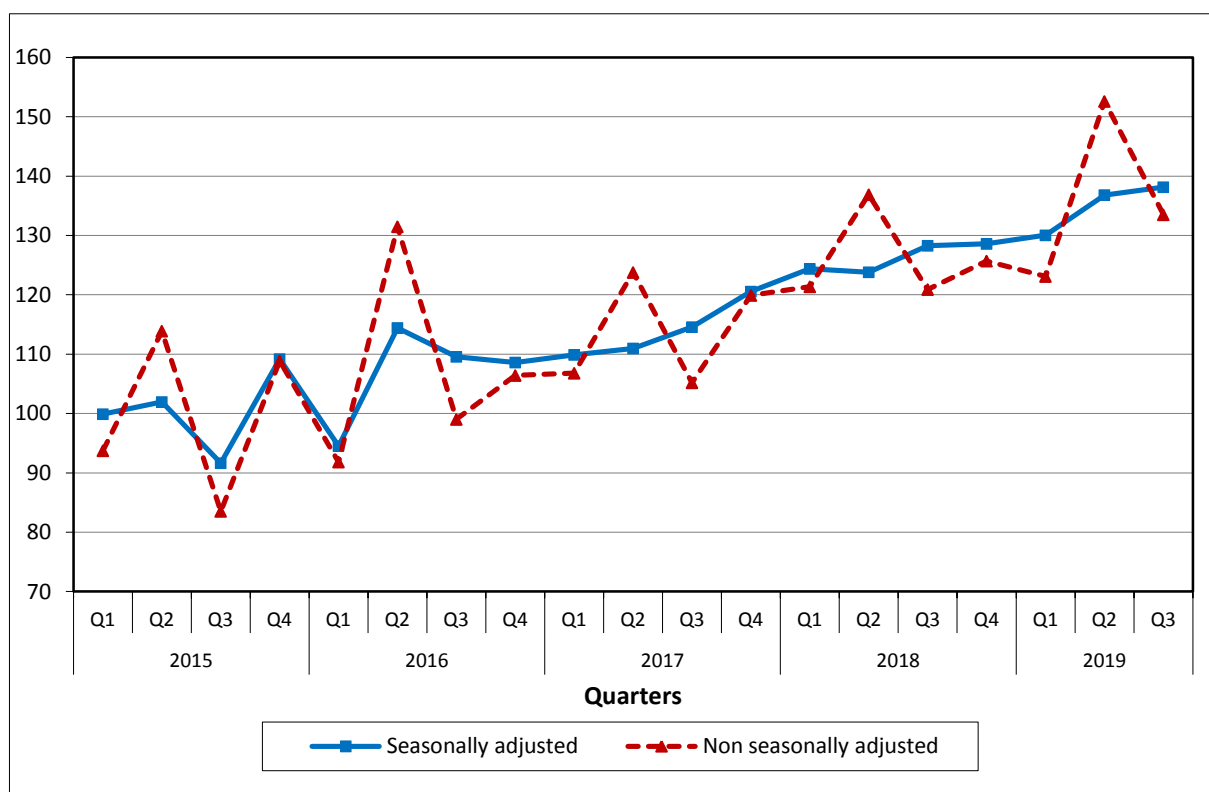
Information for methodological issues:

Division of Business Statistics
Section of Trade and Services Indices
Head of the Section: Konstantinos Thomas
Tel: +30 213 135 2048
Fax: +30 213 135 2714
E-mail: k.thomas@statistics.gr

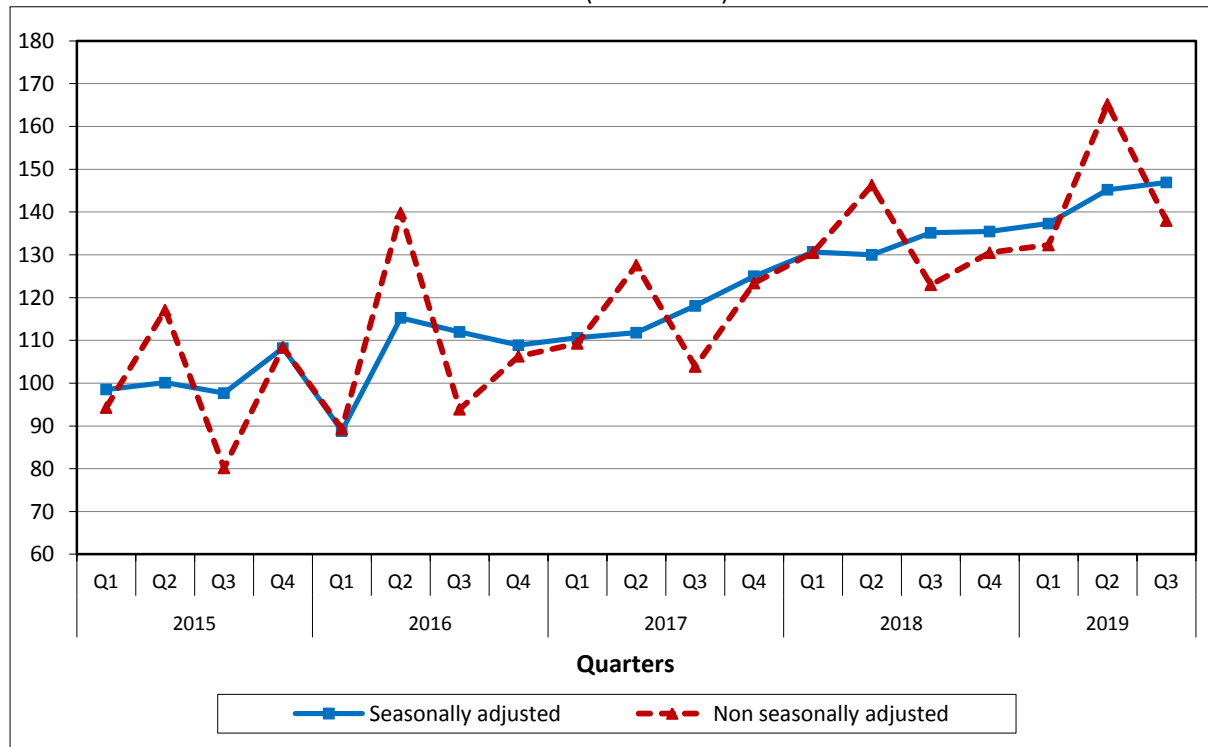
Information for data provision:

Tel: +30 213 135 2022. 2308. 2310
e-mail: data.dissem@statistics.gr

Graph 2. Seasonally and non seasonally adjusted Turnover Index for Motor Trade in division 45 of NACE Rev. 2 (2015=100.0)



Graph 3. Seasonally and non seasonally adjusted Turnover Index for Motor Trade in group 451 of NACE Rev.2 (2015=100.0)



It should be noted, that the timeseries of the seasonally adjusted index is recalculated every time a new observation is added and could differ from 100 for the base year, as seasonal effect is not the same each year. Therefore, the seasonally adjusted data differ from the published data of the Press Release of the previous quarter.

Table 1: Evolution of Turnover Indices for Motor Trade (in division 45 and group 451 of NACE Rev. 2)
(Data adjusted for working days)

Base year: 2015=100.0

Year / Quarter		Division 45 ⁽¹⁾			Group 451 ⁽²⁾		
		Indices	Annual Rates of Change (%)	Quarterly Rates of Change (%)	Indices	Annual Rates of Change (%)	Quarterly Rates of Change (%)
2015:	Q1	93.7	16.9	-6.1	94.3	17.7	-5.7
	Q2	113.9	12.3	21.5	117.1	9.9	24.2
	Q3	83.5	-7.0	-26.7	80.2	-9.6	-31.5
	Q4	108.9	9.1	30.3	108.4	8.4	35.2
Average		100.0	7.8		100.0	6.6	
2016:	Q1	91.8	-2.0	-15.6	89.3	-5.3	-17.6
	Q2	131.5	15.4	43.2	139.8	19.3	56.5
	Q3	99.0	18.6	-24.7	93.9	17.1	-32.8
	Q4	106.4	-2.2	7.5	106.3	-2.0	13.1
Average		107.2	7.2		107.3	7.3	
2017:	Q1	106.8	16.3	0.4	109.3	22.5	2.9
	Q2	123.8	-5.9	15.9	127.6	-8.7	16.7
	Q3	105.2	6.2	-15.0	103.9	10.6	-18.6
	Q4	119.9	12.7	14.0	123.4	16.1	18.8
Average		113.9	6.3		116.1	8.2	
2018:	Q1	121.4	13.6	1.2	130.5	19.4	5.8
	Q2	136.9	10.6	12.8	146.3	14.6	12.1
	Q3	120.9	14.9	-11.7	123.0	18.4	-15.9
	Q4	125.7	4.8	4.0	130.5	5.8	6.1
Average		126.2	10.8		132.6	14.2	
2019:	Q1	123.1	1.4	-2.1	132.3	1.4	1.4
	*Q2	152.6	11.5	24.0	165.2	12.9	24.9
	**Q3	133.5	10.4	-12.5	138.0	12.2	-16.5

* Revised data

** Provisional data

⁽¹⁾ Wholesale and retail trade, repair of motor vehicles and motorcycles

⁽²⁾ Sale of motor vehicles

Table 2: Evolution of seasonally adjusted Turnover Indices for Motor Trade
(in division 45 and group 451 of NACE Rev. 2)

Base year 2015=100.0

Year / Quarter		Division 45 ⁽¹⁾		Group 451 ⁽²⁾	
		Indices	Quarterly Rates of Change (%)	Indices	Quarterly Rates of Change (%)
2015:	Q1	99.9	1.9	98.5	0.9
	Q2	102.0	2.1	100.1	1.6
	Q3	91.6	-10.1	97.7	-2.4
	Q4	109.2	19.1	108.2	10.8
Average		100.7		101.1	
2016:	Q1	94.5	-13.4	88.8	-17.9
	Q2	114.4	21.1	115.3	29.8
	Q3	109.6	-4.2	112.0	-2.9
	Q4	108.6	-0.9	108.9	-2.8
Average		106.8		106.2	
2017:	Q1	109.9	1.2	110.6	1.6
	Q2	111.0	1.0	111.8	1.1
	Q3	114.6	3.2	118.1	5.6
	Q4	120.6	5.2	125.0	5.9
Average		114.0		116.4	
2018:	Q1	124.4	3.2	130.7	4.6
	Q2	123.8	-0.5	130.0	-0.5
	Q3	128.3	3.6	135.2	4.0
	Q4	128.6	0.2	135.5	0.2
Average		126.3		132.8	
2019:	Q1	130.0	1.1	137.3	1.4
	Q2	136.8	5.2	145.2	5.8
	Q3	138.1	1.0	146.9	1.2

⁽¹⁾ Wholesale and retail trade, repair of motor vehicles and motorcycles

⁽²⁾ Sale of motor vehicles

METHODOLOGICAL NOTES

Generally	The Turnover Indices for Motor Trade are quarterly indices, which were first released in 2006, with base year (b.y.) the year 2005=100.0.
Purpose of the index – definitions	The purpose of these indices is to measure in value terms the activity of the motor trade sector. Turnover excludes VAT and comprises the totals invoiced by the enterprise during the reference period (quarter), which correspond to sales of goods and services supplied to third parties.
Legal framework	The compilation of the turnover indices for motor trade is governed by Council Regulation (EEC) No.1165/98 of 19 th May 1998 concerning “Short Term Statistics” and the Regulation (EC) No 1158/05 of the European Parliament and of the Council, amending the original Regulation 1165/98. Additionally, the compilation of the Turnover Indices for Motor Trades is governed by the Regulation No. 1893/2006 of the European Parliament and of the Council of 20 th December 2006, establishing the statistical classification of economic activities NACE Rev.2.
Reference period	Quarter.
Base year	2015=100.0.
Revision	Pursuant to the provisions of Council Regulation No 1165/98 concerning “Short Term Statistics”, the indices are updated every five (5) years in years ending in 0 or 5. The purpose of updating the Turnover Indices for Motor Trade is to adjust the indices to changes in the structure of the above sector. During the last revision, following the Statistical Classification NACE Rev.2, the group “retail sale of automotive fuel” was excluded from Motor Trade Sector (division 45) and is now surveyed under Retail Trade (division 47).
Statistical classification	The NACE Rev.2 statistical classification of economic activities is used in conformity with Regulation (EC) 1893/2006 of the Council and of the European Parliament.
Geographical coverage	The indices cover the whole of the country with data coming from 45 Regional Units.
Coverage of economic activities	The indices cover the division 45 (wholesale and retail trade and repair of motor vehicles and motorcycles) and the group 451 (for sale of motor vehicles) of NACE Rev.2 statistical classification of economic activities.
Statistical survey	The indices include 2,949 enterprises, with an annual turnover (in year 2015) equal or greater than 200,000€, from which a random representative sample of 247 enterprises was therefore selected and surveyed.
Calculating the indices	The indices are calculated by applying the chaining method. The indices are reduced to a typical quarter of equal duration by multiplying the turnover estimates for the current quarter by the appropriate correction coefficient. This coefficient is calculated through the division of the average quarterly number of working days for the current year by the number of regular working days of the examined quarter.
Seasonal adjustment	Seasonal adjustment is the procedure followed to remove the impact of seasonality on the time series (after eliminating the seasonal effects, e.g: the beginning of the school year, holidays, tourist period, etc) in order to improve the comparability over time. The method used is the TRAMO-SEATS with the use of JDemetra+ 2.0.0. The whole series with seasonally adjusted indices is recalculated every time a new observation is added into the timeseries.
Compiled index series	The time series are compiled from the 1 st quarter 2000 with base year 2015=100.0. In addition, seasonally adjusted timeseries data are compiled.
Publication of data	Data of the Turnover Indices for Motor Trade (b.y. 2015=100.0) are released quarterly from the 3 rd quarter of 2018, with retrospective data from the 1 st quarter 2000.
References	More information on the methodology concerning the compilation and calculation of the indices and for the time series are available on the ELSTAT’s website: http://www.statistics.gr/en/statistics/-/publication/DKT45/