



## PRESS RELEASE

### SURVEYS ON PRE-PRIMARY AND PRIMARY EDUCATION (KINDERGARTENS AND PRIMARY SCHOOLS) END OF SCHOOL YEAR 2016/2017

The Hellenic Statistical Authority (ELSTAT) announces data on Pre-Primary and Primary Education Statistics for the school year 2016/2017. On the basis of available survey data the following observations can be made:

- a) In the school year 2016/2017 compared with the school year 2015/2016, **school units** increased by 0.6% in kindergartens and decreased by 0.8% in primary schools (Tables 2 and 4, respectively);
- b) In the school year 2016/2017 compared with the school year 2015/2016, **teaching staff** increased by 0.4% in kindergartens and decreased by 0.8% in primary schools (Tables 2 and 4, respectively);
- c) The **number of pupils** enrolled in the school year 2016/2017 compared with the corresponding number in the school year 2015/2016 recorded a 2.2% decrease in kindergartens and a 0.4% increase in primary schools (Tables 3 and 5, respectively);
- d) The **number of graduates** in primary schools in the school year 2016/2017 compared with 2015/2016 increased by 1.2% (Table 6).
- e) The **ratio of teaching staff to pupils**, in the school year 2016/2017, was 1 to 10.6 in kindergartens and 1 to 9.5 in primary schools; in the school year 2015/2016 the corresponding ratio was 1 to 10.8 and 1 to 9.4, respectively (Tables 2,3,4 and 5).
- f) The **Region of Attiki** accounted for the largest share of pupils enrolled in pre-primary and primary education schools with 31.4% for kindergartens and 34.8% for primary schools (Tables 2 and 4, respectively).

*Information:*

*Social Statistics Division*

*Education Statistics Section*

*Evdokia Oikonomou, Antonis Kritikos*

*Tel: +30 213 135 2134, +30 213 135 2778*

*Fax: +30 213 135 2780*

*e-mail: [evd.oikonomou@statistics.gr](mailto:evd.oikonomou@statistics.gr)*

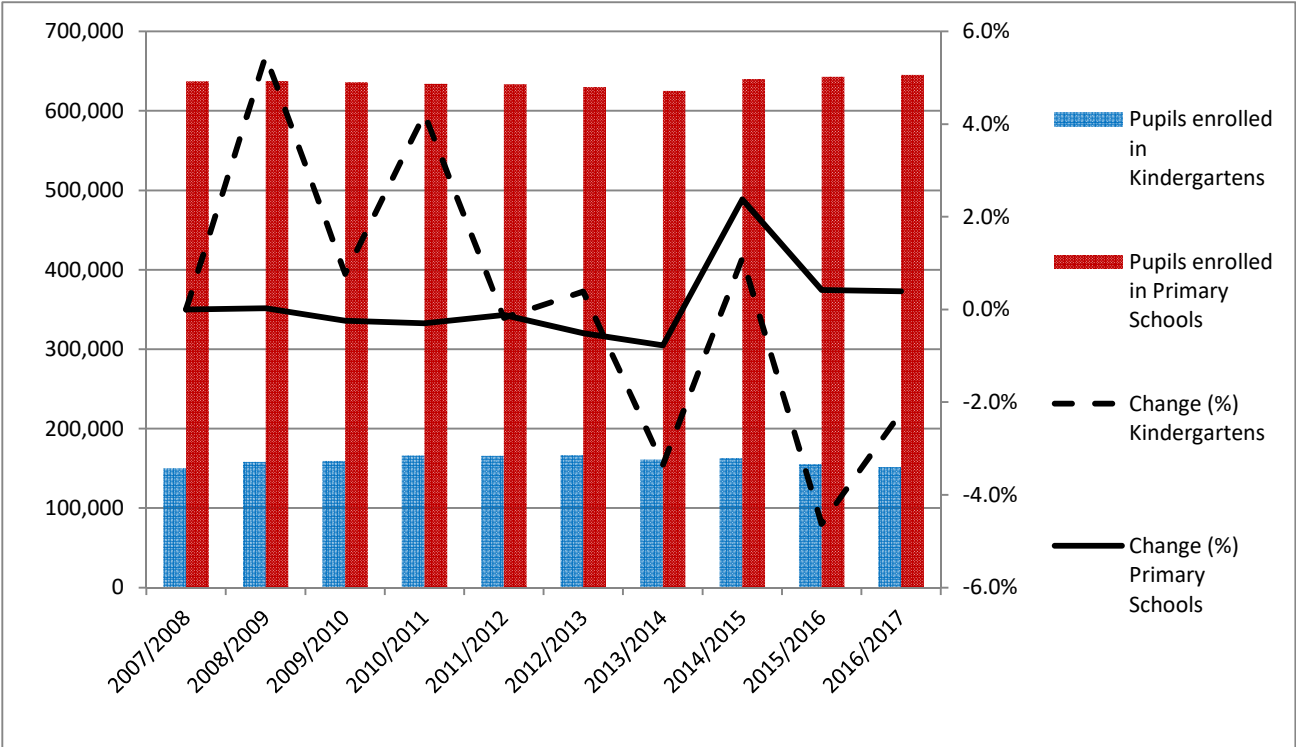
*[a.kritikos@statistics.gr](mailto:a.kritikos@statistics.gr)*

Table 1 and Graph 1 depict the evolution of the pupil population of kindergartens and primary schools during school years 2007/2008 to 2016/2017.

**Table 1**  
**Evolution of pupil population in Pre-Primary and Primary Education 2007/08 - 2016/17**

School Year	Number of Pupils	
	Kindergartens	Primary Schools
2007/2008	150,079	637,309
2008/2009	158,290	637,476
2009/2010	159,502	635,935
2010/2011	166,233	634,048
2011/2012	165,931	633,291
2012/2013	166,576	630,043
2013/2014	160,994	625,165
2014/2015	162,781	640,001
2015/2016	155,243	642,707
2016/2017	151,804	645,250

**Graph 1**  
**Evolution of pupil population in Pre-Primary and Primary Education 2007/08 - 2016/17**



## A. KINDERGARTENS

Tables 2 and 3 present data on the number of kindergartens, teaching staff and pupils enrolled.

**Table 2. School Units and Teaching Staff<sup>1</sup> by Type of School Unit and NUTS 2 Region (Kindergartens)**

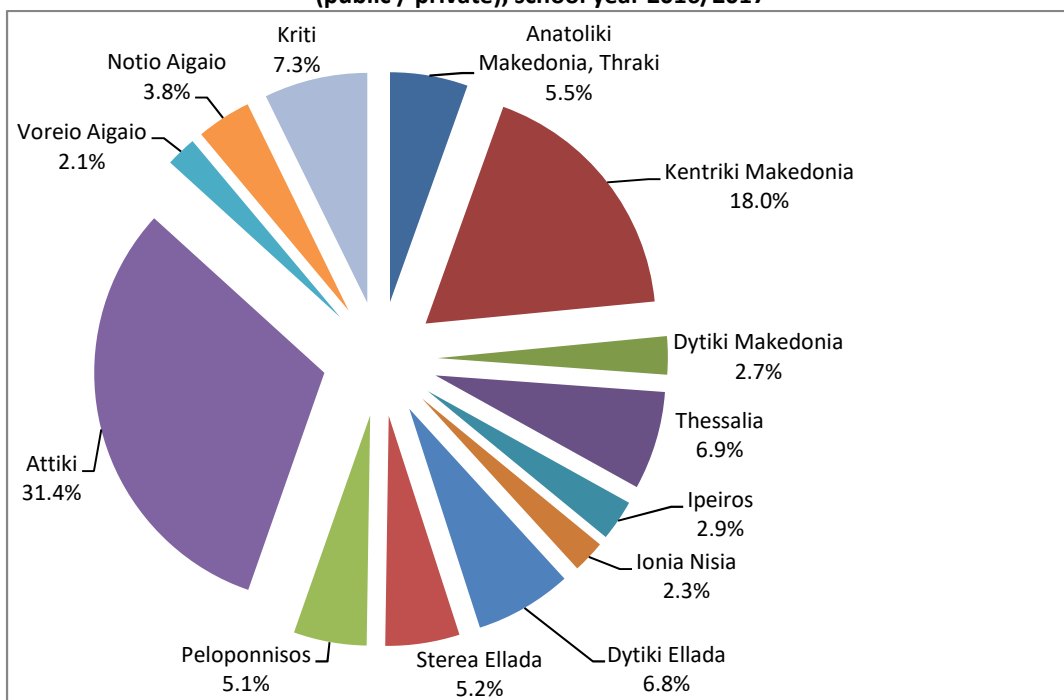
<i>By Type of School Unit</i>						
School Units	Number of School Units			Teaching Staff		
	2015/16	2016/17	Change (%)	2015/16	2016/17	Change (%)
<b>Public</b>	5,035	5,056	0.4	13,441	13,494	0.4
<b>Private</b>	602	616	2.3	880	888	0.9
<b>TOTAL</b>	<b>5,637</b>	<b>5,672</b>	<b>0.6</b>	<b>14,321</b>	<b>14,382</b>	<b>0.4</b>
<i>By Region</i>						
NUTS 2 Region	Number of School Units			Teaching Staff		
	2015/16	2016/17	Change (%)	2015/16	2016/17	Change (%)
<b>Anatoliki Makedonia, Thraki</b>	322	321	-0.3	812	803	-1.1
<b>Kentriki Makedonia</b>	1,006	1,004	-0.2	2,628	2,627	0.0
<b>Dytiki Makedonia</b>	190	192	1.1	455	457	0.4
<b>Thessalia</b>	462	464	0.4	1,022	1,019	-0.3
<b>Ipeiros</b>	218	220	0.9	510	487	-4.5
<b>Ionia Nisia</b>	147	146	-0.7	376	388	3.2
<b>Dytiki Ellada</b>	420	423	0.7	980	970	-1.0
<b>Stereia Ellada</b>	314	325	3.5	752	745	-0.9
<b>Peloponnisos</b>	335	340	1.5	766	774	1.0
<b>Attiki</b>	1,427	1,437	0.7	3,854	3,902	1.2
<b>Voreio Aigaio</b>	145	145	0.0	411	408	-0.7
<b>Notio Aigaio</b>	224	224	0.0	532	569	7.0
<b>Kriti</b>	427	431	0.9	1,223	1,233	0.8
<b>TOTAL</b>	<b>5,637</b>	<b>5,672</b>	<b>0.6</b>	<b>14,321</b>	<b>14,382</b>	<b>0.4</b>

<sup>1</sup> Teaching staff includes teachers classified as absent. "Absent teachers" are the teachers with a fixed post in the school unit, who are absent for more than 20 days (due to illness, training, maternity leave, etc) and their replacement is pending, as well as the teachers who are seconded to other administrative posts of the Ministry of Education, Research and Religious Affairs or elsewhere.

**Table 3. Pupils enrolled by Type of School Unit and NUTS 2 Region (Kindergartens)**

<i>By Type of School Unit</i>									
School Units	Greece total			Males			Females		
	2015/16	2016/17	Change (%)	2015/16	2016/17	Change (%)	2015/16	2016/17	Change (%)
Public	141,741	137,470	-3.0	72,481	70,435	-2.8	69,260	67,035	-3.2
Private	13,502	14,334	6.2	7,055	7,398	4.9	6,447	6,936	7.6
<b>TOTAL</b>	<b>155,243</b>	<b>151,804</b>	<b>-2.2</b>	<b>79,536</b>	<b>77,833</b>	<b>-2.1</b>	<b>75,707</b>	<b>73,971</b>	<b>-2.3</b>
<i>By Region</i>									
NUTS 2 Region	Greece total			Males			Females		
	2015/16	2016/17	Change (%)	2015/16	2016/17	Change (%)	2015/16	2016/17	Change (%)
Anatoliki Makedonia, Thraki	8,654	8,306	-4.0	4,538	4,280	-5.7	4,116	4,026	-2.2
Kentriki Makedonia	28,126	27,339	-2.8	14,331	13,938	-2.7	13,795	13,401	-2.9
Dytiki Makedonia	4,290	4,041	-5.8	2,159	2,077	-3.8	2,131	1,964	-7.8
Thessalia	11,001	10,508	-4.5	5,543	5,341	-3.6	5,458	5,167	-5.3
Ipeiros	4,658	4,343	-6.8	2,393	2,257	-5.7	2,265	2,086	-7.9
Ionia Nisia	3,584	3,493	-2.5	1,832	1,751	-4.4	1,752	1,742	-0.6
Dytiki Ellada	10,731	10,339	-3.7	5,438	5,340	-1.8	5,293	4,999	-5.6
Sterea Ellada	8,152	7,909	-3.0	4,212	4,082	-3.1	3,940	3,827	-2.9
Peloponnisos	8,162	7,777	-4.7	4,228	4,002	-5.3	3,934	3,775	-4.0
Attiki	47,559	47,637	0.2	24,396	24,462	0.3	23,163	23,175	0.1
Voreio Aigaio	3,274	3,250	-0.7	1,681	1,638	-2.6	1,593	1,612	1.2
Notio Aigaio	5,788	5,837	0.8	2,976	2,998	0.7	2,812	2,839	1.0
Kriti	11,264	11,025	-2.1	5,809	5,667	-2.4	5,455	5,358	-1.8
<b>TOTAL</b>	<b>155,243</b>	<b>151,804</b>	<b>-2.2</b>	<b>79,536</b>	<b>77,833</b>	<b>-2.1</b>	<b>75,707</b>	<b>73,971</b>	<b>-2.3</b>

**Graph 2**  
**Percentage distribution of pupils enrolled in Kindergartens, by NUTS 2 Region (public / private), school year 2016/2017**



## B. PRIMARY SCHOOLS

Tables 4, 5 and 6 present data on the number of primary schools, teaching staff, pupils enrolled and graduates.

**Tables 4. School Units and Teaching Staff<sup>2</sup> by Type of School Unit and NUTS 2 Region (Primary Schools)**

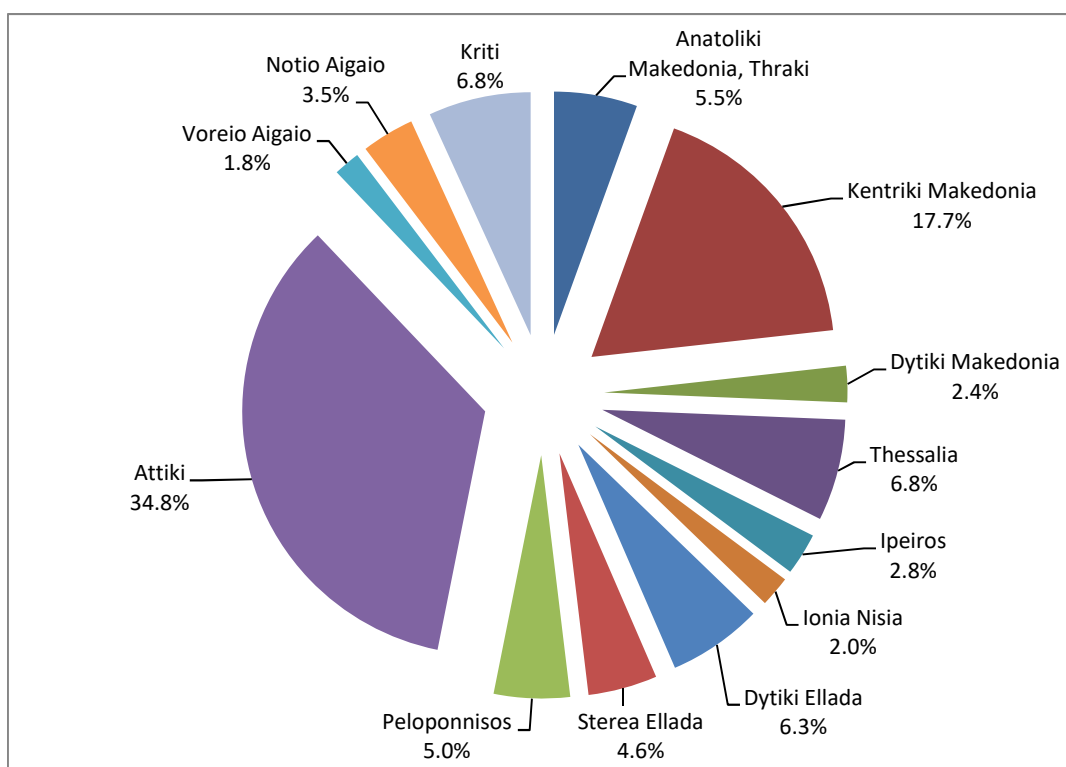
<i>By Type of School Unit</i>						
School Units	Number of School Units			Teaching Staff		
	2015/16	2016/17	Change (%)	2015/16	2016/17	Change (%)
<b>Public</b>	4,384	4,346	-0.9	65,229	64,463	-1.2
<b>Private</b>	163	163	0.0	3,150	3,345	6.2
<b>TOTAL</b>	<b>4,547</b>	<b>4,509</b>	<b>-0.8</b>	<b>68,379</b>	<b>67,808</b>	<b>-0.8</b>
<i>By Region</i>						
NUTS 2 Region	Number of School Units			Teaching Staff		
	2015/16	2016/17	Change (%)	2015/16	2016/17	Change (%)
<b>Anatoliki Makedonia, Thraki</b>	360	350	-2.8	4,163	4,136	-0.6
<b>Kentriki Makedonia</b>	761	758	-0.4	12,477	12,094	-3.1
<b>Dytiki Makedonia</b>	154	155	0.6	2,038	1,989	-2.4
<b>Thessalia</b>	361	359	-0.6	4,664	4,604	-1.3
<b>Ipeiros</b>	195	191	-2.1	2,207	2,177	-1.4
<b>Ionia Nisia</b>	105	105	0.0	1,528	1,527	-0.1
<b>Dytiki Ellada</b>	399	382	-4.3	4,568	4,434	-2.9
<b>Stereia Ellada</b>	300	295	-1.7	3,446	3,418	-0.8
<b>Peloponnisos</b>	267	267	0.0	3,383	3,337	-1.4
<b>Attiki</b>	1,004	1,006	0.2	21,285	21,283	0.0
<b>Voreio Aigaio</b>	136	136	0.0	1,526	1,553	1.8
<b>Notio Aigaio</b>	184	184	0.0	2,312	2,447	5.8
<b>Kriti</b>	321	321	0.0	4,782	4,809	0.6
<b>TOTAL</b>	<b>4,547</b>	<b>4,509</b>	<b>-0.8</b>	<b>68,379</b>	<b>67,808</b>	<b>-0.8</b>

<sup>2</sup> Teaching staff includes teachers classified as absent. "Absent teachers" are the teachers with a fixed post in the school unit, who are absent for more than 20 days (due to illness, training, maternity leave, etc) and their replacement is pending, as well as the teachers who are seconded to other administrative posts of the Ministry of Education, Research and Religious Affairs or elsewhere.

**Table 5. Pupils enrolled by Type of School Unit and NUTS 2 Region (Primary Schools)**

<i>By Type of School Unit</i>									
School Units	Greece total			Males			Females		
	2015/16	2016/17	Change (%)	2015/16	2016/17	Change (%)	2015/16	2016/17	Change (%)
Public	607,811	609,414	0.3	312,563	313,101	0.2	295,248	296,313	0.4
Private	34,896	35,836	2.7	17,915	18,402	2.7	16,981	17,434	2.7
<b>TOTAL</b>	<b>642,707</b>	<b>645,250</b>	<b>0.4</b>	<b>330,478</b>	<b>331,503</b>	<b>0.3</b>	<b>312,229</b>	<b>313,747</b>	<b>0.5</b>
<i>By Region</i>									
NUTS 2 Region	Greece total			Males			Females		
	2015/16	2016/17	Change (%)	2015/16	2016/17	Change (%)	2015/16	2016/17	Change (%)
Anatoliki Makedonia, Thraki	35,908	35,589	-0.9	18,432	18,352	-0.4	17,476	17,237	-1.4
Kentriki Makedonia	113,886	114,302	0.4	58,424	58,586	0.3	55,462	55,716	0.5
Dytiki Makedonia	15,599	15,541	-0.4	7,992	7,930	-0.8	7,607	7,611	0.1
Thessalia	43,509	43,559	0.1	22,314	22,275	-0.2	21,195	21,284	0.4
Ipeiros	17,932	18,101	0.9	9,356	9,422	0.7	8,576	8,679	1.2
Ionia Nisia	13,008	13,074	0.5	6,749	6,800	0.8	6,259	6,274	0.2
Dytiki Ellada	40,721	40,521	-0.5	21,187	21,098	-0.4	19,534	19,423	-0.6
Stereia Ellada	29,765	29,661	-0.3	15,516	15,403	-0.7	14,249	14,258	0.1
Peloponnisos	32,605	32,579	-0.1	16,811	16,727	-0.5	15,794	15,852	0.4
Attiki	222,426	224,285	0.8	114,211	115,027	0.7	108,215	109,258	1.0
Voreio Aigaio	11,203	11,330	1.1	5,684	5,758	1.3	5,519	5,572	1.0
Notio Aigaio	22,292	22,651	1.6	11,382	11,583	1.8	10,910	11,068	1.4
Kriti	43,853	44,057	0.5	22,420	22,542	0.5	21,433	21,515	0.4
<b>TOTAL</b>	<b>642,707</b>	<b>645,250</b>	<b>0.4</b>	<b>330,478</b>	<b>331,503</b>	<b>0.3</b>	<b>312,229</b>	<b>313,747</b>	<b>0.5</b>

**Graph 3**  
**Percentage distribution of pupils enrolled in Primary Schools**  
**by NUTS 2 Region, school year 2016/2017**



**Table 6. Graduates by Type of School Unit and NUTS 2 Region (Primary Schools)**

<i>By Type of School Unit</i>			
School Units	Graduates		
	2015/16	2016/17	Change (%)
Public	96,242	97,586	1.4
Private	5,529	5,430	-1.8
<b>TOTAL</b>	<b>101,771</b>	<b>103,016</b>	<b>1.2</b>
<i>By Region</i>			
NUTS 2 Region	Graduates		
	2015/16	2016/17	Change (%)
Anatoliki Makedonia, Thraki	5,679	5,688	0.2
Kentriki Makedonia	18,034	18,206	1.0
Dytiki Makedonia	2,535	2,592	2.2
Thessalia	6,849	7,126	4.0
Ipeiros	2,855	2,909	1.9
Ionia Nisia	2,111	2,124	0.6
Dytiki Ellada	6,603	6,522	-1.2
Stereia Ellada	4,775	4,759	-0.3
Peloponnisos	5,157	5,330	3.4
Attiki	34,938	35,570	1.8
Voreio Aigaio	1,782	1,752	-1.7
Notio Aigaio	3,528	3,613	2.4
Kriti	6,925	6,825	-1.4
<b>TOTAL</b>	<b>101,771</b>	<b>103,016</b>	<b>1.2</b>

## EXPLANATORY NOTES

**Surveys on Pre-Primary and Primary Education** Pre-primary and Primary Education includes Kindergartens and Primary Schools. The relevant surveys are conducted on a yearly basis, with the aim of collecting data on the number of pupils enrolled, the school units and the number of teaching staff.

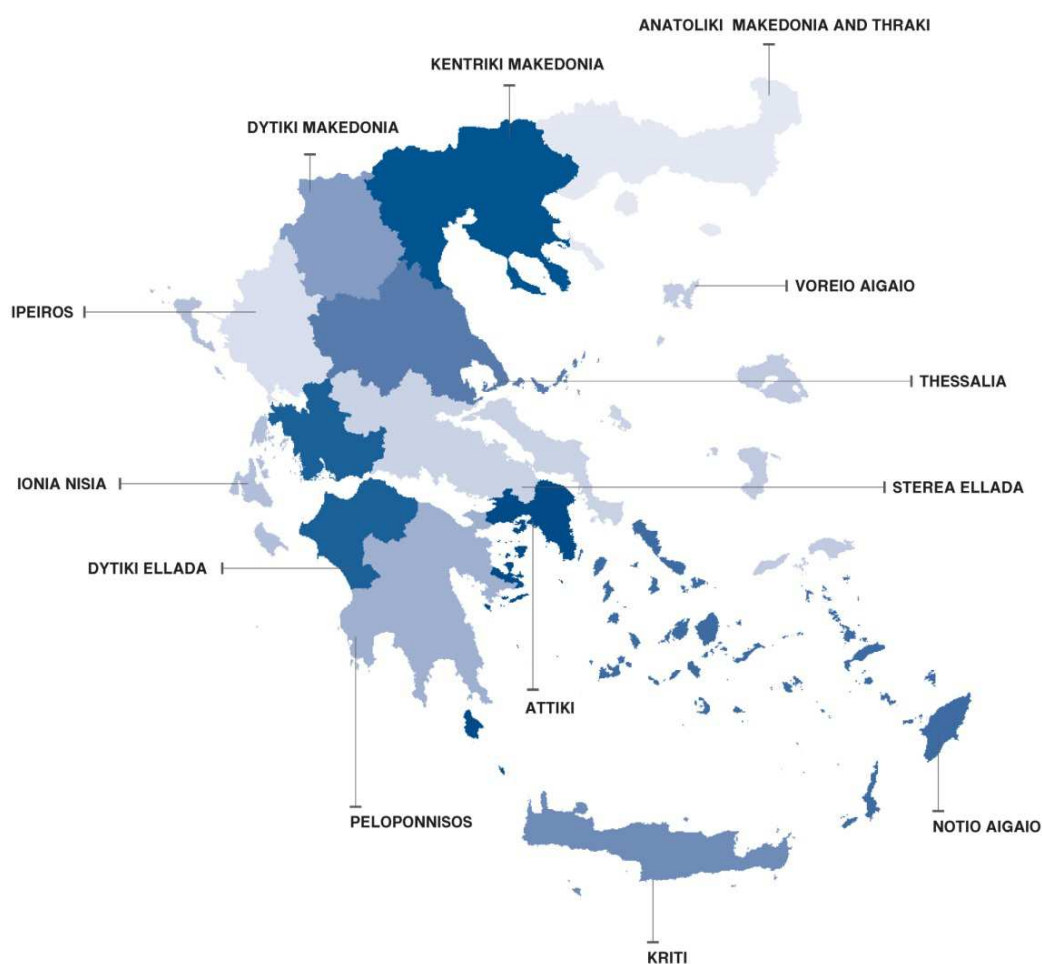
**Legal Framework** The surveys are conducted by virtue of Regulations (EU) No 452/2008 and 912/2013 of the European Parliament and of the Council.

**Statistical Units** The statistical units are the school units.

**Coverage** Greece total.

**Geographical classification** The geographical classification is based on Nomenclature of Territorial Units for Statistics.

**Map of the 13 Regions (NUTS 2) of Greece**





**Dissemination of results** The data are posted on a yearly basis on the website of ELSTAT and are published in a relevant Press Release.

**Reference period** The data of the surveys refer to the end of school year 2016/2017. For comparability reasons, the data of the end of the previous school year 2015/2016 are also provided.

**Methodology and coverage** Until the school year 2013/2014, the surveys on Pre-Primary and Primary Education used to be census, yearly surveys and they were conducted by ELSTAT.

For the school year 2014/2015 onwards, data of these surveys are collected as follows:

- As regards public school units, the data are extracted from the “live” e-platform “MySchool” of the Ministry of Education, Research and Religious Affairs.
- As regards private school units, data are collected from the questionnaires that are sent to the relevant school units.

**References** More information, such as tables with the survey results, samples of questionnaires, etc, on the Survey on Pre-Primary and Primary Education can be found on the webpage of ELSTAT [www.statistics.gr](http://www.statistics.gr) and at the link: “Statistics” / Population and Social Conditions / Education / Primary Education / Kindergartens (Beginning – End of school year) or Primary Schools (Beginning – End of school year”).