



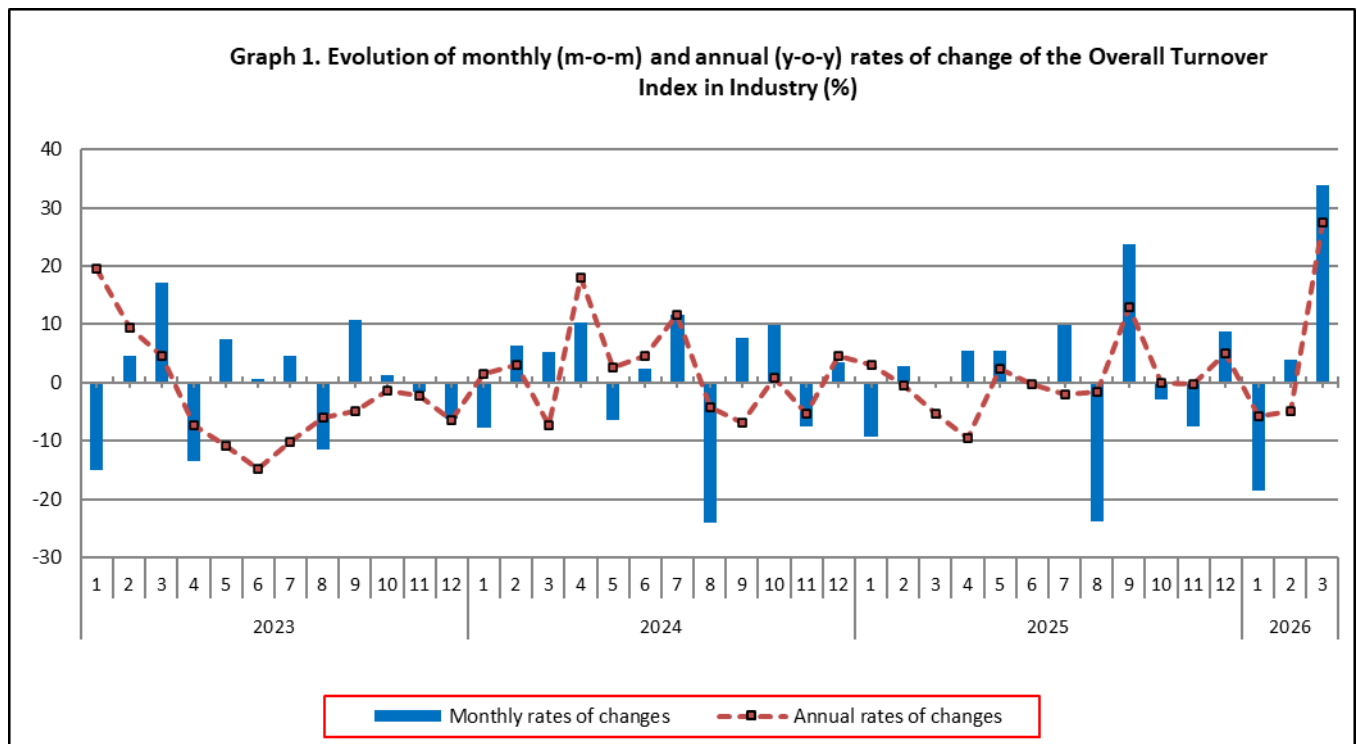
TURNOVER INDEX IN INDUSTRY March 2026, y-o-y increase of 27.4%

The Hellenic Statistical Authority announces the Turnover Index in Industry with base year 2021=100.0 for March 2026, the evolution of which on the basis of provisional data, is as follows:

The Overall Turnover Index in Industry (both Domestic and Non-Domestic Market) in March 2026 recorded an increase of 27.4% compared with the corresponding index of March 2025. The Overall Turnover Index in Industry in March 2025 decreased by 5.3% compared with the corresponding index in March 2024 (Table 1).

The Overall Turnover Index in Industry in March 2026, compared with February 2026, recorded an increase of 34.0% (Table 6).

The average Overall Turnover Index in Industry for the 12-month period from April 2025 to March 2026 increased by 1.8%, compared with the corresponding index of the 12-month period from April 2024 to March 2025. The average Overall Turnover Index in Industry for the 12-month period from April 2024 to March 2025 increased by 1.9% compared with the corresponding index of the 12-month period from April 2023 to March 2024 (Table 13).



Information on methodological issues:

Division of Business Statistics
Section of Manufacture-Construction Indices and Industrial Products
Deputy Head of Section: Vlachokosta Evrydiki
Tel: +30 213 135 2056
E-mail: e.vlachokosta@statistics.gr

Information on data provision:

Tel: +30 213 135 2022, 2308, 2310
E-mail: data.dissem@statistics.gr

Evolution of the Overall Turnover Index in Industry in March 2026

I. Annual changes of the Overall Turnover Index in Industry: March 2026 / March 2025

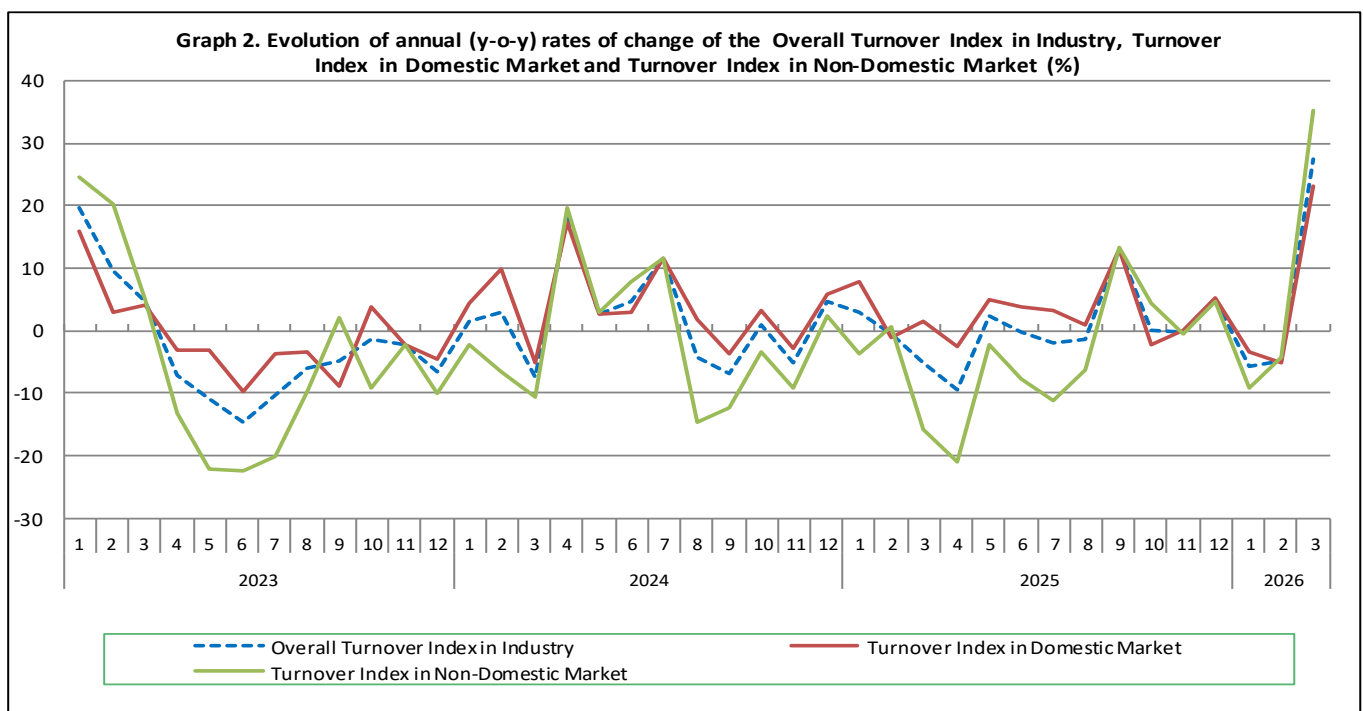
The 27.4% increase of the Overall Turnover Index in Industry in March 2026, compared with the corresponding index in March 2025, was due to the following:

1. Changes in the sub-indices of the industrial sections (Table 1):

- The Turnover Index in Manufacturing increased by 27.7%. The increase was mainly the result of the annual changes of the sub-indices in the following 2-digit divisions: coke and refined petroleum products, computers, electronic and optical products, basic pharmaceutical products and pharmaceutical preparations, electrical equipment.
- The Turnover Index in Mining and quarrying increased by 12.5%. The increase was the result of the annual changes of the sub-indices in the following 2-digit divisions: other mining and quarrying products, mining of metal ores.

2. Changes in the sub-indices in Domestic and Non-Domestic Markets:

- The Turnover Index in Industry in Non-Domestic Market increased by 35.4% (Table 3).
- The Turnover Index in Industry in Domestic Market increased by 23.2% (Table 2).



II. Annual changes of the Turnover Index in Industry in Domestic Market: March 2026 / March 2025

The 23.2% increase of the Turnover Index in Industry in Domestic Market in March 2026, compared with March 2025, is due to the annual changes in the sub-indices of the following industrial sections (Table 2):

- The Turnover Index in Manufacturing increased by 23.3%. The increase was mainly the result of the annual changes of the sub-indices in the following 2-digit divisions: coke and refined petroleum products, computers, electronic and optical products, electrical equipment, textiles.
- The Turnover Index in Mining and quarrying increased by 14.3%. The increase was the result of the annual change of the sub-index in the following 2-digit division: other mining and quarrying products.

III. Annual changes of the Turnover Index in Industry in Non-Domestic Market: March 2026 / March 2025

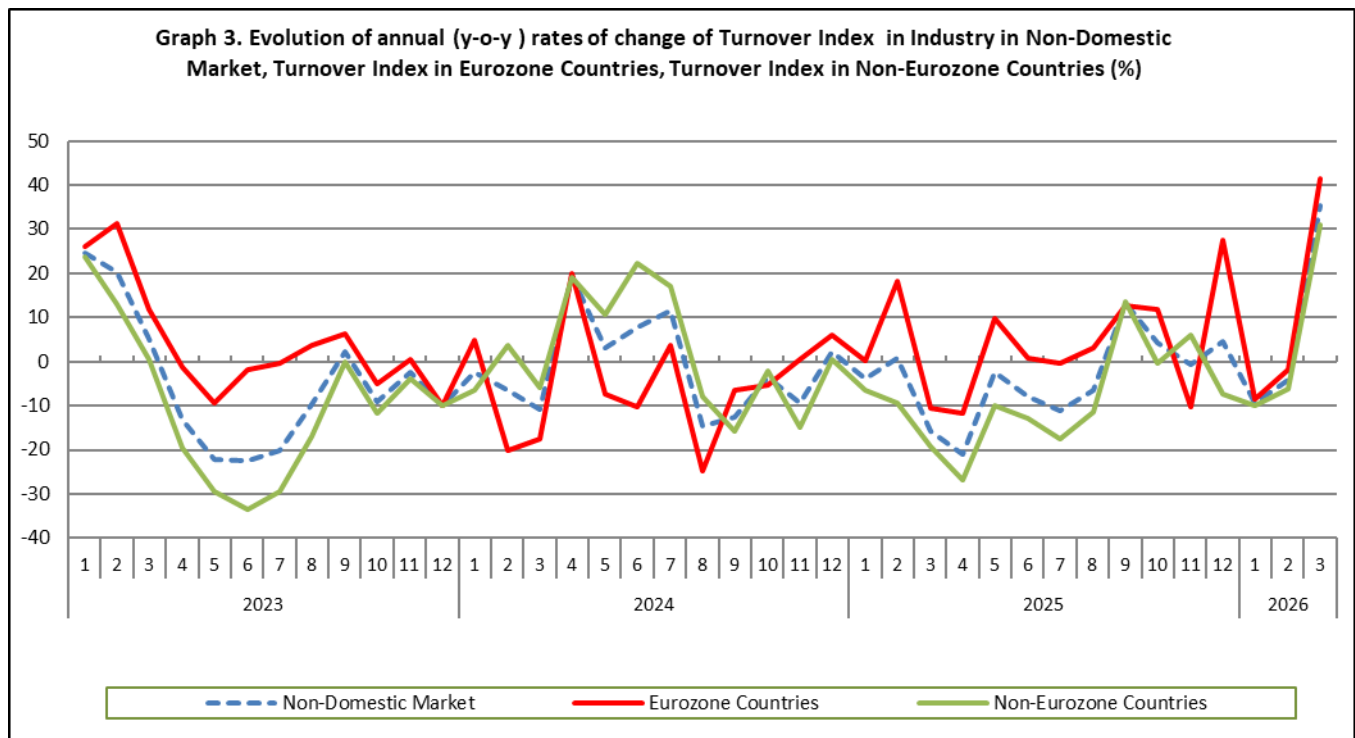
The 35.4% increase of the Turnover Index in Industry in Non-Domestic Market in March 2026, compared with March 2025, was due to the following:

1. Changes in the sub-indices of the industrial sections (Table 3):

- The Turnover Index in Manufacturing increased by 35.9%. The increase was mainly the result of the annual changes of the sub-indices in the following 2-digit divisions: coke and refined petroleum products, other transport equipment, basic pharmaceutical products and pharmaceutical preparations, computers, electronic and optical products.
- The Turnover Index in Mining and quarrying increased by 10.4%. The increase was mainly the result of the annual changes of the sub-indices in the following 2-digit divisions: mining of coal and lignite - extraction of crude petroleum and natural gas - mining support service activities, mining of metal ores.

2. Changes in the sub-indices in Eurozone and Non-Eurozone countries:

- The Turnover Index in Industry in Eurozone countries increased by 41.6% (Table 4).
- The Turnover Index in Industry in Non-Eurozone countries increased by 30.9% (Table 5).



IV. Monthly changes of the Overall Turnover Index in Industry: March 2026 / February 2026

The 34.0% increase of the Overall Turnover Index in Industry in March 2026, compared with the corresponding index in February 2026, was due to the following:

1. Changes in the sub-indices of industrial sections (Table 6):

- The Turnover Index in Mining and quarrying increased by 53.1%.
- The Turnover Index in Manufacturing increased by 33.7%.

2. Changes in the sub-indices in Domestic and Non-Domestic Market:

- The Turnover Index in Industry in Domestic Market increased by 37.4% (Table 7).
- The Turnover Index in Industry in Non-Domestic Market increased by 28.4% (Table 8).

Table 1. Annual rates of change of the Turnover Index in Industry: Total Market

Base year: 2021=100.0

Code	Division	Weights	March			Rate of change (%)	
			2026*	2025*	2024	2026/2025	2025/2024
OVERALL INDEX			153.00	120.07	126.79	27.4	-5.3
B	MINING AND QUARRYING	100.00	161.99	144.00	112.44	12.5	28.1
05-06-09	Mining of coal and lignite - Extraction of crude petroleum and natural gas - Mining support service activities	6.54	36.27	81.02	59.64	-55.2	35.9
07	Mining of metal ores	26.13	185.93	174.27	88.15	6.7	97.7
08	Other mining and quarrying products	67.33	164.91	138.37	126.99	19.2	9.0
C	MANUFACTURING	100.00	152.89	119.77	126.97	27.7	-5.7
10	Food	21.71	140.26	127.68	128.15	9.9	-0.4
11	Beverages	2.99	146.03	129.16	125.03	13.1	3.3
12	Tobacco products	1.42	198.56	169.16	147.94	17.4	14.3
13	Textiles	1.20	138.28	116.66	111.66	18.5	4.5
14	Wearing apparel	1.18	94.43	96.29	97.47	-1.9	-1.2
15	Leather and related products	0.20	123.38	130.31	143.85	-5.3	-9.4
16	Wood and products of wood and cork, except furniture	0.78	140.99	121.35	130.27	16.2	-6.9
17	Paper and paper products	2.44	131.92	120.30	113.68	9.7	5.8
18	Printing and reproduction of recorded products	0.97	139.98	118.07	117.00	18.6	0.9
19	Coke and refined petroleum products	24.35	170.91	88.08	136.28	94.1	-35.4
20	Chemicals and chemical products	5.25	162.71	143.27	137.06	13.6	4.5
21	Basic pharmaceutical products and pharmaceutical preparations	4.43	166.12	131.65	134.75	26.2	-2.3
22	Rubber and plastic products	3.49	132.21	118.86	111.91	11.2	6.2
23	Other non-metallic mineral products	3.42	189.17	165.22	148.32	14.5	11.4
24	Basic metals	11.11	136.21	121.30	110.10	12.3	10.2
25	Fabricated metal products, except machinery and equipment	4.58	132.46	121.97	112.55	8.6	8.4
26	Computers, electronic and optical products	1.17	221.24	173.66	156.77	27.4	10.8
27	Electrical equipment	3.84	162.92	129.51	120.72	25.8	7.3
28	Machinery and equipment n.e.c.	1.62	133.69	124.16	117.78	7.7	5.4
29	Motor vehicles, trailers and semi-trailers	0.26	127.54	121.93	125.59	4.6	-2.9
30	Other transport equipment	0.30	167.97	158.87	117.03	5.7	35.8
31	Furniture	0.97	152.81	135.29	130.78	13.0	3.4
32	Other manufacturing	0.72	116.61	99.31	96.83	17.4	2.6
33	Repair and installation of machinery and equipment	1.61	161.16	153.66	116.73	4.9	31.6
MAIN INDUSTRIAL GROUPINGS							
1	Energy	24.13	170.49	88.06	136.03	93.6	-35.3
2	Intermediate goods	34.47	144.10	127.74	118.18	12.8	8.1
3	Capital goods	7.19	144.68	133.44	119.62	8.4	11.6
4	Consumer Durables	1.90	195.46	160.63	148.34	21.7	8.3
5	Consumer Non-Durables	32.31	148.79	130.42	129.40	14.1	0.8

* Provisional data

Note: The indices and the percentage changes are rounded up to two and one decimal digits, respectively, when published.

Table 2. Annual rates of change of the Turnover Index in Industry: Domestic Market

Base year: 2021=100.0

Code	Division	Weights	March			Rate of change (%)	
			2026*	2025*	2024	2026/2025	2025/2024
OVERALL INDEX			160.36	130.12	128.38	23.2	1.4
B	MINING AND QUARRYING	100.00	210.96	184.58	142.16	14.3	29.8
05-06-09	Mining of coal and lignite - Extraction of crude petroleum and natural gas - Mining support service activities	9.16	2.97	129.79	95.92	-97.7	35.3
07	Mining of metal ores	12.89	152.76	168.23	101.66	-9.2	65.5
08	Other mining and quarrying products	77.94	245.03	193.72	154.3	26.5	25.5
C	MANUFACTURING	100.00	159.92	129.65	128.26	23.3	1.1
10	Food	27.12	133.43	120.42	122.73	10.8	-1.9
11	Beverages	4.38	148.81	130.36	125.02	14.2	4.3
12	Tobacco products	1.00	185.26	157.81	129.09	17.4	22.2
13	Textiles	1.07	121.89	99.07	98.43	23.0	0.7
14	Wearing apparel	1.21	105.53	100.85	101.16	4.6	-0.3
15	Leather and related products	0.25	118.95	106.34	124.97	11.9	-14.9
16	Wood and products of wood and cork, except furniture	1.10	141.44	120.53	130.77	17.4	-7.8
17	Paper and paper products	3.30	131.58	118.95	112.66	10.6	5.6
18	Printing and reproduction of recorded products	1.29	138.67	117.14	116.73	18.4	0.4
19	Coke and refined petroleum products	15.29	237.44	132.07	158.25	79.8	-16.5
20	Chemicals and chemical products	6.21	164.33	146.58	141.80	12.1	3.4
21	Basic pharmaceutical products and pharmaceutical preparations	4.50	150.54	140.05	129.63	7.5	8.0
22	Rubber and plastic products	3.60	137.35	122.13	111.92	12.5	9.1
23	Other non-metallic mineral products	3.97	228.08	187.78	161.65	21.5	16.2
24	Basic metals	8.73	138.21	129.03	108.23	7.1	19.2
25	Fabricated metal products, except machinery and equipment	5.73	146.20	122.40	116.42	19.4	5.1
26	Computers, electronic and optical products	0.49	135.71	95.26	93.28	42.5	2.1
27	Electrical equipment	3.46	175.64	136.68	135.71	28.5	0.7
28	Machinery and equipment n.e.c.	1.79	132.50	121.66	118.16	8.9	3.0
29	Motor vehicles, trailers and semi-trailers	0.36	123.92	118.13	112.50	4.9	5.0
30	Other transport equipment	0.33	97.13	145.57	104.50	-33.3	39.3
31	Furniture	1.39	159.33	138.08	131.34	15.4	5.1
32	Other manufacturing	0.95	110.22	92.33	94.91	19.4	-2.7
33	Repair and installation of machinery and equipment	2.48	158.87	145.03	113.50	9.5	27.8
MAIN INDUSTRIAL GROUPINGS							
1	Energy	15.23	236.34	132.09	157.96	78.9	-16.4
2	Intermediate goods	35.14	151.39	133.76	123.06	13.2	8.7
3	Capital goods	8.91	149.02	131.30	117.51	13.5	11.7
4	Consumer Durables	2.40	145.61	117.68	124.60	23.7	-5.6
5	Consumer Non-Durables	38.32	141.95	126.50	124.27	12.2	1.8

* Provisional data

Note: The indices and the percentage changes are rounded up to two and one decimal digits, respectively, when published.

Table 3. Annual rates of change of the Turnover Index in Industry: Non-Domestic Market

Base year: 2021=100.0

Code	Division	Weights	March			Rate of change (%)	
			2026*	2025*	2024	2026/2025	2025/2024
OVERALL INDEX			141.77	104.73	124.36	35.4	-15.8
B	MINING AND QUARRYING	100.00	126.99	114.99	91.19	10.4	26.1
05-06-09	Mining of coal and lignite - Extraction of crude petroleum and natural gas - Mining support service activities	4.66	83.10	12.46	8.62	566.8	44.5
07	Mining of metal ores	35.59	194.52	175.83	84.65	10.6	107.7
08	Other mining and quarrying products	59.75	90.17	86.74	101.52	4.0	-14.6
C MANUFACTURING		100.00	142.05	104.54	124.97	35.9	-16.3
10	Food	13.38	161.60	150.33	145.08	7.5	3.6
11	Beverages	0.85	123.93	119.64	125.09	3.6	-4.4
12	Tobacco products	2.08	208.38	177.53	161.84	17.4	9.7
13	Textiles	1.40	157.56	137.34	127.22	14.7	8.0
14	Wearing apparel	1.13	76.05	88.75	91.36	-14.3	-2.9
15	Leather and related products	0.12	137.83	208.57	205.47	-33.9	1.5
16	Wood and products of wood and cork, except furniture	0.28	138.25	126.24	127.28	9.5	-0.8
17	Paper and paper products	1.12	133.47	126.47	118.34	5.5	6.9
18	Printing and reproduction of recorded products	0.48	145.43	121.96	118.11	19.3	3.3
19	Coke and refined petroleum products	38.31	130.01	61.03	122.78	113.0	-50.3
20	Chemicals and chemical products	3.78	158.59	134.90	125.06	17.6	7.9
21	Basic pharmaceutical products and pharmaceutical preparations	4.32	191.13	118.16	142.98	61.8	-17.4
22	Rubber and plastic products	3.32	123.61	113.39	111.90	9.0	1.3
23	Other non-metallic mineral products	2.57	96.61	111.54	116.61	-13.4	-4.3
24	Basic metals	14.76	134.39	114.26	111.81	17.6	2.2
25	Fabricated metal products, except machinery and equipment	2.82	89.47	120.63	100.41	-25.8	20.1
26	Computers, electronic and optical products	2.23	250.11	200.12	178.19	25.0	12.3
27	Electrical equipment	4.42	147.59	120.86	102.64	22.1	17.8
28	Machinery and equipment n.e.c.	1.34	136.14	129.31	117.00	5.3	10.5
29	Motor vehicles, trailers and semi-trailers	0.10	148.05	143.49	199.79	3.2	-28.2
30	Other transport equipment	0.26	308.01	185.17	141.79	66.3	30.6
31	Furniture	0.32	109.54	116.76	127.09	-6.2	-8.1
32	Other manufacturing	0.36	142.90	128.03	104.71	11.6	22.3
33	Repair and installation of machinery and equipment	0.27	193.86	276.53	162.69	-29.9	70.0
MAIN INDUSTRIAL GROUPINGS							
1	Energy	37.70	129.91	60.92	122.52	113.2	-50.3
2	Intermediate goods	33.44	132.41	118.09	110.35	12.1	7.0
3	Capital goods	4.57	131.75	139.81	125.89	-5.8	11.1
4	Consumer Durables	1.15	354.24	297.41	223.95	19.1	32.8
5	Consumer Non-Durables	23.14	166.07	140.32	142.36	18.3	-1.4

* Provisional data

Note: The indices and the percentage changes are rounded up to two and one decimal digits, respectively, when published.

Table 4. Annual rates of change of the Turnover Index in Industry: Eurozone Countries

Base year: 2021=100.0

Code	Sections and main groupings	March			Rate of change (%)	
		2026*	2025*	2024	2026/2025	2025/2024
OVERALL INDEX		176.09	124.36	138.85	41.6	-10.4
INDUSTRIAL SECTIONS						
B	MINING AND QUARRYING	165.61	149.54	63.64	10.7	135.0
C	MANUFACTURING	176.35	123.73	140.71	42.5	-12.1
MAIN INDUSTRIAL GROUPINGS						
1	Energy	181.96	55.74	153.51	226.4	-63.7
2	Intermediate goods	158.93	138.15	116.33	15.0	18.8
3	Capital goods	190.28	131.78	152.67	44.4	-13.7
4	Consumer Durables	248.19	196.20	201.18	26.5	-2.5
5	Consumer Non-Durables	186.49	143.33	150.87	30.1	-5.0

* Provisional data

Table 5. Annual rates of change of the Turnover Index in Industry: Non-Eurozone Countries

Base year: 2021=100.0

Code	Sections and main groupings	March			Rate of change (%)	
		2026*	2025*	2024	2026/2025	2025/2024
OVERALL INDEX		123.19	94.11	116.51	30.9	-19.2
INDUSTRIAL SECTIONS						
B	MINING AND QUARRYING	93.08	84.67	115.36	9.9	-26.6
C	MANUFACTURING	123.64	94.25	116.53	31.2	-19.1
MAIN INDUSTRIAL GROUPINGS						
1	Energy	118.03	62.10	115.45	90.0	-46.2
2	Intermediate goods	113.73	103.97	106.13	9.4	-2.0
3	Capital goods	103.89	143.63	113.14	-27.7	27.0
4	Consumer Durables	504.20	440.54	256.16	14.5	72.0
5	Consumer Non-Durables	143.44	136.98	132.93	4.7	3.0

* Provisional data

Note: The indices and the percentage changes are rounded up to two and one decimal digits, respectively, when published.

Table 6. Monthly rate of change of the Turnover Index in Industry: Total Market

Base year: 2021=100.0

Code	Sections and main groupings	March 2026*	February 2026**	Rate of change (%) Mar. 2026 / Feb. 2026
OVERALL INDEX		153.00	114.21	34.0
INDUSTRIAL SECTIONS				
B	MINING AND QUARRYING	161.99	105.83	53.1
C	MANUFACTURING	152.89	114.31	33.7
MAIN INDUSTRIAL GROUPINGS				
1	Energy	170.49	88.25	93.2
2	Intermediate goods	144.10	115.93	24.3
3	Capital goods	144.68	118.34	22.3
4	Consumer Durables	195.46	128.97	51.6
5	Consumer Non-Durables	148.79	129.96	14.5

Table 7. Monthly rate of change of the Turnover Index in Industry: Domestic Market

Base year: 2021=100.0

Code	Sections and main groupings	March 2026*	February 2026**	Rate of change (%) Mar. 2026 / Feb. 2026
OVERALL INDEX		160.36	116.68	37.4
INDUSTRIAL SECTIONS				
B	MINING AND QUARRYING	210.96	169.18	24.7
C	MANUFACTURING	159.92	116.23	37.6
MAIN INDUSTRIAL GROUPINGS				
1	Energy	236.34	100.81	134.4
2	Intermediate goods	151.39	115.25	31.4
3	Capital goods	149.02	119.99	24.2
4	Consumer Durables	145.61	113.81	27.9
5	Consumer Non-Durables	141.95	123.70	14.8

Table 8. Monthly rate of change of the Turnover Index in Industry: Non-Domestic Market

Base year: 2021=100.0

Code	Sections and main groupings	March 2026*	February 2026**	Rate of change (%) Mar. 2026 / Feb. 2026
OVERALL INDEX		141.77	110.44	28.4
INDUSTRIAL SECTIONS				
B	MINING AND QUARRYING	126.99	60.54	109.7
C	MANUFACTURING	142.05	111.36	27.6
MAIN INDUSTRIAL GROUPINGS				
1	Energy	129.91	80.51	61.4
2	Intermediate goods	132.41	117.02	13.2
3	Capital goods	131.75	113.44	16.1
4	Consumer Durables	354.24	177.27	99.8
5	Consumer Non-Durables	166.07	145.77	13.9

* Provisional data ** Revised data

Note: The indices and the percentage changes are rounded up to two and one decimal digits, respectively, when published.

Table 9. Monthly rate of change of the Turnover Index in Industry: Eurozone Countries

Base year: 2021=100.0

Code	Sections and main groupings	March 2026*	February 2026**	Rate of change (%) Mar. 2026 / Feb. 2026
OVERALL INDEX		176.09	139.39	26.3
INDUSTRIAL SECTIONS				
B	MINING AND QUARRYING	165.61	41.34	300.6
C	MANUFACTURING	176.35	141.82	24.3
MAIN INDUSTRIAL GROUPINGS				
1	Energy	181.96	126.76	43.5
2	Intermediate goods	158.93	133.28	19.2
3	Capital goods	190.28	154.32	23.3
4	Consumer Durables	248.19	192.31	29.1
5	Consumer Non-Durables	186.49	148.87	25.3

* Provisional data ** Revised data

Table 10. Monthly rate of change of the Turnover Index in Industry: Non-Eurozone Countries

Base year: 2021=100.0

Code	Sections and main groupings	March 2026*	February 2026**	Rate of change (%) Mar. 2026 / Feb. 2026
OVERALL INDEX		123.19	94.75	30.0
INDUSTRIAL SECTIONS				
B	MINING AND QUARRYING	93.08	77.39	20.3
C	MANUFACTURING	123.64	95.02	30.1
MAIN INDUSTRIAL GROUPINGS				
1	Energy	118.03	69.96	68.7
2	Intermediate goods	113.73	105.56	7.7
3	Capital goods	103.89	93.99	10.5
4	Consumer Durables	504.20	155.99	223.2
5	Consumer Non-Durables	143.44	142.33	0.8

* Provisional data ** Revised data

Note: The indices and the percentage changes are rounded up to two and one decimal digits, respectively, when published.

Table 11. Evolution of the Turnover Index in Industry (y-o-y changes): Total Market

Base year: 2021=100.0

Year and month	Overall Index (Total Market)		Turnover Index in Industry in Domestic Market		Turnover Index in Industry in Non-Domestic Market	
	Index	Annual rate of change (%)	Index	Annual rate of change (%)	Index	Annual rate of change (%)
2025*:						
3	120.07	-5.3	130.12	1.4	104.73	-15.8
4	126.69	-9.4	140.49	-2.4	105.63	-20.9
5	133.74	2.3	145.34	4.9	116.03	-2.3
6	133.49	-0.3	147.40	3.9	112.27	-7.8
7	146.70	-2.0	164.91	3.1	118.93	-11.2
8	111.80	-1.5	125.84	1.0	90.36	-6.4
9	138.26	13.0	147.67	12.9	123.90	13.2
10	134.35	-0.1	143.03	-2.3	121.10	4.3
11	124.09	-0.2	131.10	0.1	113.40	-0.6
12	134.90	4.9	146.03	5.1	117.91	4.5
2026*:						
1	109.94	-5.8	114.20	-3.6	103.44	-9.3
2	114.21	-4.8	116.68	-5.2	110.44	-4.2
3	153.00	27.4	160.36	23.2	141.77	35.4

*Provisional data

Table 12. Evolution of the Turnover Index in Industry (y-o-y changes): Non-Domestic Market

Base year: 2021=100.0

Year and month	Overall Index (Non-Domestic Market)		Turnover Index in Industry in Eurozone Countries		Turnover Index in Industry in Non-Eurozone Countries	
	Index	Annual rate of change (%)	Index	Annual rate of change (%)	Index	Annual rate of change (%)
2025*:						
3	104.73	-15.8	124.36	-10.4	94.11	-19.2
4	105.63	-20.9	132.37	-11.8	91.15	-26.8
5	116.03	-2.3	142.56	9.7	101.66	-9.8
6	112.27	-7.8	128.72	0.7	103.36	-12.8
7	118.93	-11.2	141.63	-0.4	106.63	-17.6
8	90.36	-6.4	98.69	3.0	85.85	-11.5
9	123.90	13.2	135.17	12.6	117.80	13.6
10	121.10	4.3	143.27	11.8	109.10	-0.4
11	113.40	-0.6	118.55	-10.3	110.62	6.1
12	117.91	4.5	138.73	27.7	106.63	-7.3
2026*:						
1	103.44	-9.3	122.50	-8.5	93.11	-9.9
2	110.44	-4.2	139.39	-1.7	94.75	-6.1
3	141.77	35.4	176.09	41.6	123.19	30.9

*Provisional data

Note: The indices and the percentage changes are rounded up to two and one decimal digits, respectively, when published.

Table 13. Average indices and rates of change (%) of the 12-month periods of Turnover Index in Industry: Total Market
Base year: 2021=100.0

Code	Division	Average Indices of 12-month periods			Rate of change (%)	
		April 2025*- March 2026*	April 2024- March 2025*	April 2023- March 2024	2026/2025	2025/2024
OVERALL INDEX		130.10	127.84	125.49	1.8	1.9
B	MINING AND QUARRYING	147.03	132.41	115.53	11.0	14.6
05-06-09	Mining of coal and lignite - Extraction of crude petroleum and natural gas - Mining support service activities	64.39	121.74	123.96	-47.1	-1.8
07	Mining of metal ores	151.63	130.47	104.60	16.2	24.7
08	Other mining and quarrying products	153.26	134.20	118.95	14.2	12.8
C	MANUFACTURING	129.89	127.78	125.61	1.6	1.7
10	Food	138.31	134.56	129.47	2.8	3.9
11	Beverages	150.01	147.47	136.35	1.7	8.2
12	Tobacco products	185.19	173.82	142.80	6.5	21.7
13	Textiles	112.96	107.14	105.94	5.4	1.1
14	Wearing apparel	93.79	96.16	101.77	-2.5	-5.5
15	Leather and related products	106.22	107.83	118.21	-1.5	-8.8
16	Wood and products of wood and cork, except furniture	127.24	120.42	121.91	5.7	-1.2
17	Paper and paper products	125.80	122.59	122.15	2.6	0.4
18	Printing and reproduction of recorded products	131.14	124.75	120.03	5.1	3.9
19	Coke and refined petroleum products	117.55	124.33	136.51	-5.5	-8.9
20	Chemicals and chemical products	120.40	116.68	111.97	3.2	4.2
21	Basic pharmaceutical products and pharmaceutical preparations	152.99	143.09	133.62	6.9	7.1
22	Rubber and plastic products	114.74	112.79	108.49	1.7	4.0
23	Other non-metallic mineral products	164.44	150.95	139.83	8.9	7.9
24	Basic metals	116.20	112.92	106.12	2.9	6.4
25	Fabricated metal products, except machinery and equipment	125.72	122.04	117.05	3.0	4.3
26	Computers, electronic and optical products	160.66	139.10	132.44	15.5	5.0
27	Electrical equipment	139.77	134.79	120.27	3.7	12.1
28	Machinery and equipment n.e.c.	128.71	124.33	116.80	3.5	6.4
29	Motor vehicles, trailers and semi-trailers	151.80	145.36	135.44	4.4	7.3
30	Other transport equipment	151.28	148.46	129.47	1.9	14.7
31	Furniture	131.75	129.18	128.15	2.0	0.8
32	Other manufacturing	109.01	111.27	116.64	-2.0	-4.6
33	Repair and installation of machinery and equipment	154.32	140.35	122.01	10.0	15.0
MAIN INDUSTRIAL GROUPINGS						
1	Energy	117.36	124.33	136.48	-5.6	-8.9
2	Intermediate goods	125.10	121.24	114.53	3.2	5.9
3	Capital goods	137.95	128.89	121.46	7.0	6.1
4	Consumer Durables	151.99	141.88	139.92	7.1	1.4
5	Consumer Non-Durables	141.90	136.44	129.01	4.0	5.8

*Provisional data

Note: The indices and the percentage changes are rounded up to two and one decimal digits, respectively, when published.

METHODOLOGICAL NOTES

Generally	The Industrial Turnover Index is an indicator of an enterprise's business cycle showing the monthly evolution of the market of goods and services in industry. The first compilation of the Turnover Index was completed by the Hellenic Statistical Authority in 2006, with base year 2000=100.0 and is compiled from 2000 onwards.
Purpose of the index	The purpose of this index is to measure the monthly activity of the industrial sector in terms of value. Turnover comprises the totals invoiced by the observation units during the reference period and corresponds to the market sales of goods or services supplied to third parties. The purposes and the characteristics of the Turnover Index apply, as well, to the indices for the distinction between domestic and non-domestic turnover.
Legal Framework	The compilation and publication of the Turnover Index is based on the Regulation (EU) No 2019/2152 of the European Parliament and of the Council on European business statistics, as well as Commission Implementing Regulation (EU) No 2020/1197 laying down technical specifications and arrangements pursuant to Regulation (EU) No 2019/2152. Furthermore, the indices are governed by Regulation (EC) No 1893/2006 of the European Parliament and of the Council.
Reference period	Month.
Base year	2021=100.0.
Revision	Pursuant to the provisions of Council Regulation No 2019/2152 concerning the indices, they are updated, every five (5) years in years ending in 0 or 5, while, in the current revision 2021=100.0 due to the impact of the pandemic, they were revised with base year the year 2021.
Statistical classifications	At the level of classes of economic activities, the statistical classification of economic activities NACE Rev. 2 of EU was used (Regulation No 1893/2006), while at the level of main industrial groupings, the allocation of two-digit and three-digit NACE Rev. 2 headings to categories of aggregate classification was used, in accordance with Commission Regulation No 656/2007.
Geographical coverage	The index covers the whole Country.
Coverage of economic activities	The Turnover Index in Industry is compiled for all activities listed in Sections B (mining and quarrying) and C (manufacturing) of the NACE Rev. 2 statistical classification.
Computation of the Index	The Turnover Index in Industry is a fixed base index. This index is calculated at a first stage at the four-digit level of economic activity and subsequently, with the implementation of appropriate weighting coefficients, the index is calculated at higher levels (three-level and two-level of economic activity) as well as at the level of Main Industrial Groupings (MIGs).
Publication of data	The Turnover Index in Industry (2021=100.0) is released since February 2024 with October 2024 as first reference month. Data with base year 2021=100.0 are available from March 2000 onwards.
References	More information about the methodology concerning the compilation and calculation of the index and for the time series is available on the website of the Hellenic Statistical Authority (ELSTAT) (http://www.statistics.gr/en/statistics/-/publication/DKT24/).