



PRESS RELEASE

SURVEY ON SECONDARY VOCATIONAL EDUCATION END OF SCHOOL YEAR 2018/2019

The Hellenic Statistical Authority (ELSTAT) announces data on Secondary Vocational Education (Vocational Upper Secondary Schools (EPAL) and the Vocational Schools (EPAS)) deriving from the relevant survey for the end of the school year 2018/2019. The survey results can be summarized as follows:

- The **school units** during the school year 2018/2019, amounted to 459 in comparison with 456 in the school year 2017/2018 (Table 2).
- **Teaching staff** in the school year 2018/2019 compared with the corresponding number in the school year 2017/2018, increased from 12,536 to 13,151 (Table 2).
- **The number of pupils enrolled** in the school year 2018/2019, compared with the corresponding number in the school year 2017/2018, increased from 97,452 to 103,440 (Table 3).
- **The number of graduates** in the school year 2018/2019 compared with the corresponding number in the school year 2017/2018, decreased from 26,610 to 23,007 (Table 3).
- **The ratio of teaching staff to pupils**, in the school year 2018/2019, was 1 teacher for 7.9 pupils, while the corresponding ratio in the school year 2017/2018 was 1 teacher for 7.8 pupils (Tables 2 and 3).
- The **Region of Attiki** in the school year 2018/2019 accounted for 27.4% of the total pupil population of all the EPAS and EPAL in Greece (Graph 4).

Information on methodological issues:

Division of Sectoral Statistics
Section of Education & Sports Statistics
Head of the Section: Antonios Kritikos
Tel: +30 213 135 2134, 2782
Fax: +30 213 135 2780
e-mail: a.kritikos@statistics.gr

Information for data provision:

Tel. +30 213 135 2022, 2310
Email. data.dissem@statistics.gr

More specifically, Table 1 and Graph 1 depict the evolution of pupil population in Secondary Vocational Education during the period 2009/2010 to 2018/2019.

Table 1
Evolution of pupil population in Secondary Vocational Education
2009/10 – 2018/19

School Year	Pupils Enrolled
2009/2010	110,771
2010/2011	113,658
2011/2012	121,008
2012/2013	123,989
2013/2014	109,917
2014/2015	101,761
2015/2016	98,772
2016/2017	98,568
2017/2018	97,452
2018/2019	103,440

Graph 1
Evolution of pupil population in Secondary Vocational Education
2009/10 – 2018/19

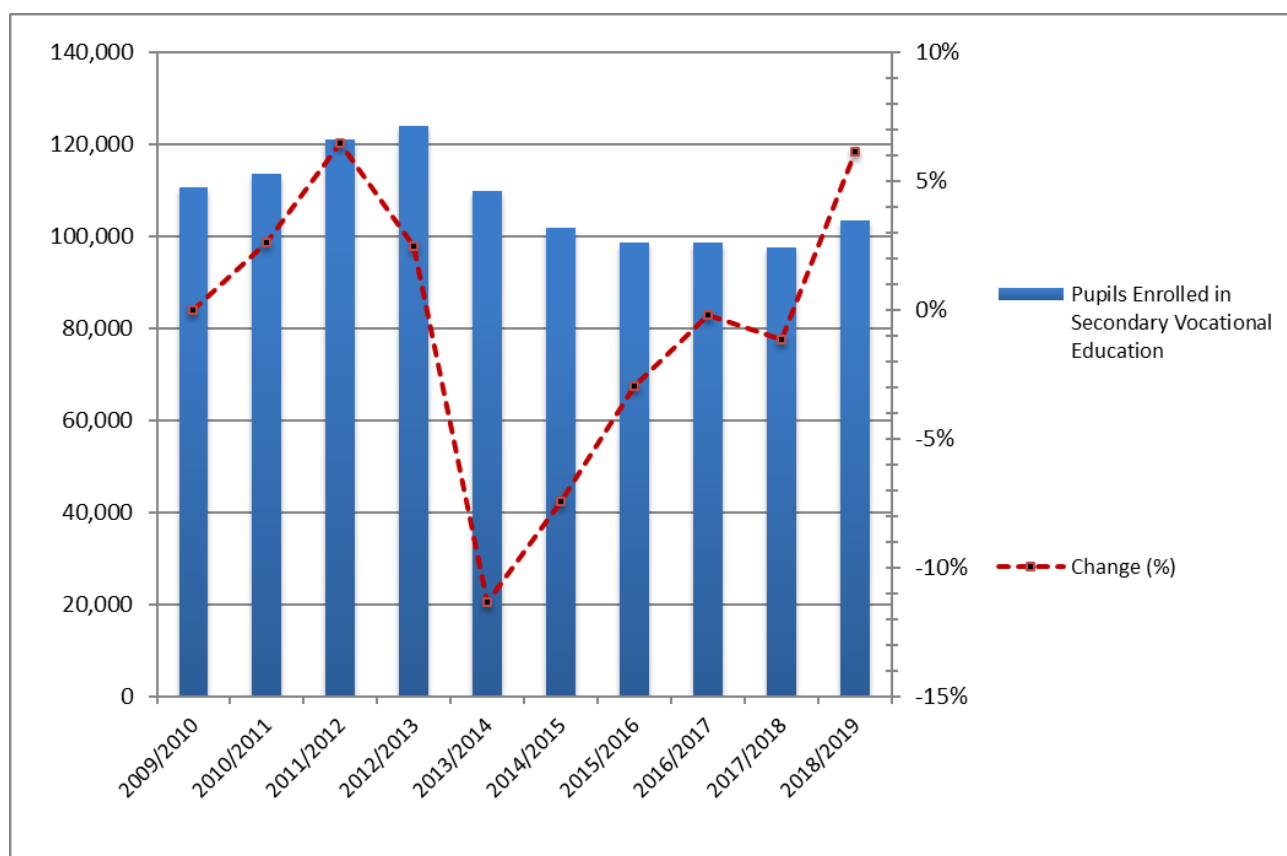


Table 2 presents data on the number of the school units and teaching staff for school years 2017/2018 and 2018/2019.

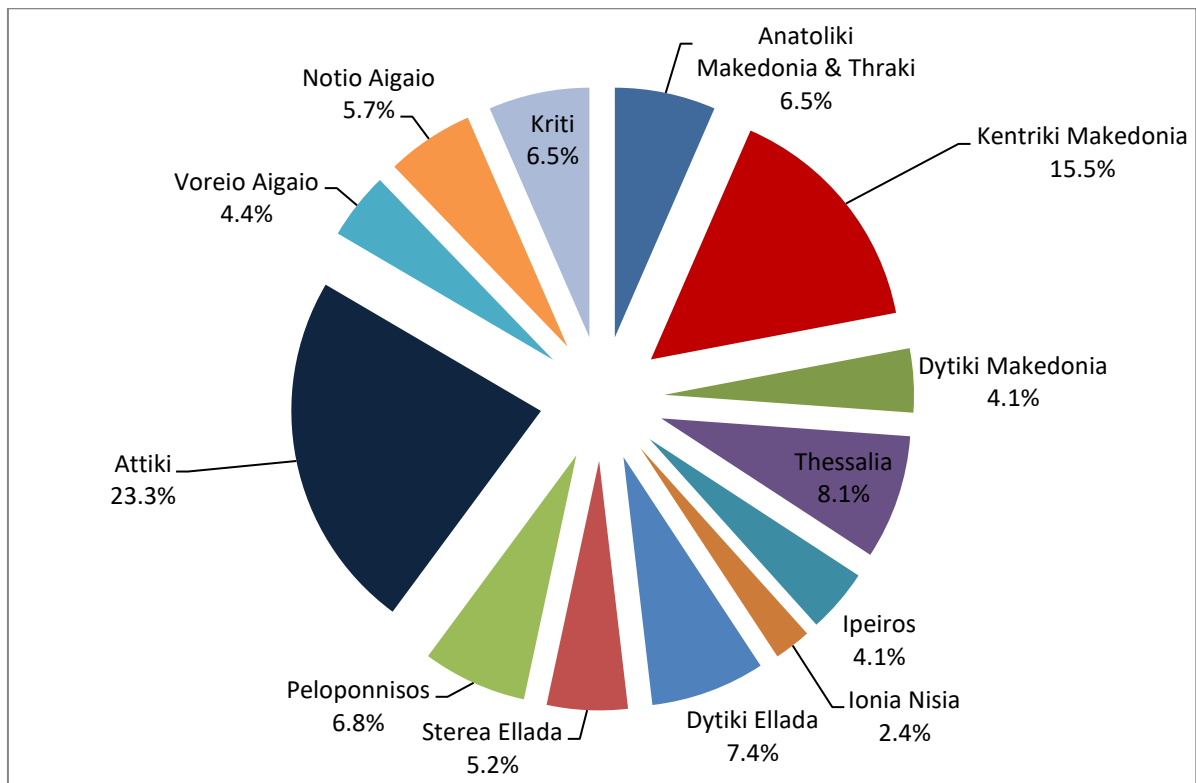
Table 2. Number of school units and teaching staff¹

<i>By Type of school unit</i>						
School units	Number of school units			Teaching staff		
	2017/18	2018/19	Change (%)	2017/18	2018/19	Change (%)
EPAL of the Ministry of Education and Religious Affairs	400	403	0.8	10,958	11,602	5.9
EPAS of the Ministry of Labour and Social Affairs	50	50	0.0	1,510	1,488	-1.5
EPAS of the Ministry of Rural Development and Food	6	6	0.0	68	61	-10.3
TOTAL	456	459	0.7	12,536	13,151	4.9
<i>By Region</i>						
Region (NUTS 2)	Number of school units			Teaching staff		
	2017/18	2018/19	Change (%)	2017/18	2018/19	Change (%)
Anatoliki Makedonia, Thraki	30	30	0.0	805	861	7.0
Kentriki Makedonia	71	71	0.0	2,349	2,425	3.2
Dytiki Makedonia	19	19	0.0	584	566	-3.1
Thessalia	37	37	0.0	1,083	1,113	2.8
Ipeiros	19	19	0.0	482	498	3.3
Ionia Nisia	11	11	0.0	254	246	-3.1
Dytiki Ellada	33	34	3.0	816	842	3.2
Stereia Ellada	24	24	0.0	567	589	3.9
Peloponnisos	30	31	3.3	624	639	2.4
Attiki	107	107	0.0	3,018	3,273	8.4
Voreio Aigaio	19	20	5.3	429	465	8.4
Notio Aigaio	26	26	0.0	597	651	9.0
Kriti	30	30	0.0	928	983	5.9
TOTAL	456	459	0.7	12,536	13,151	4.9

¹ Absent teachers are also included.

Absent teachers are the teachers with a fixed post in the school unit, who are absent for more than 20 days (due to illness, training, maternity leave, etc) and their replacement is pending, as well as the teachers who are seconded to other administrative posts of the Ministry of Education and Religious Affairs or elsewhere.

Graph 2. Percentage distribution of school units by NUTS 2 region, school year 2018/19



Graph 3. Teaching staff by NUTS 2 region, school year 2018/19

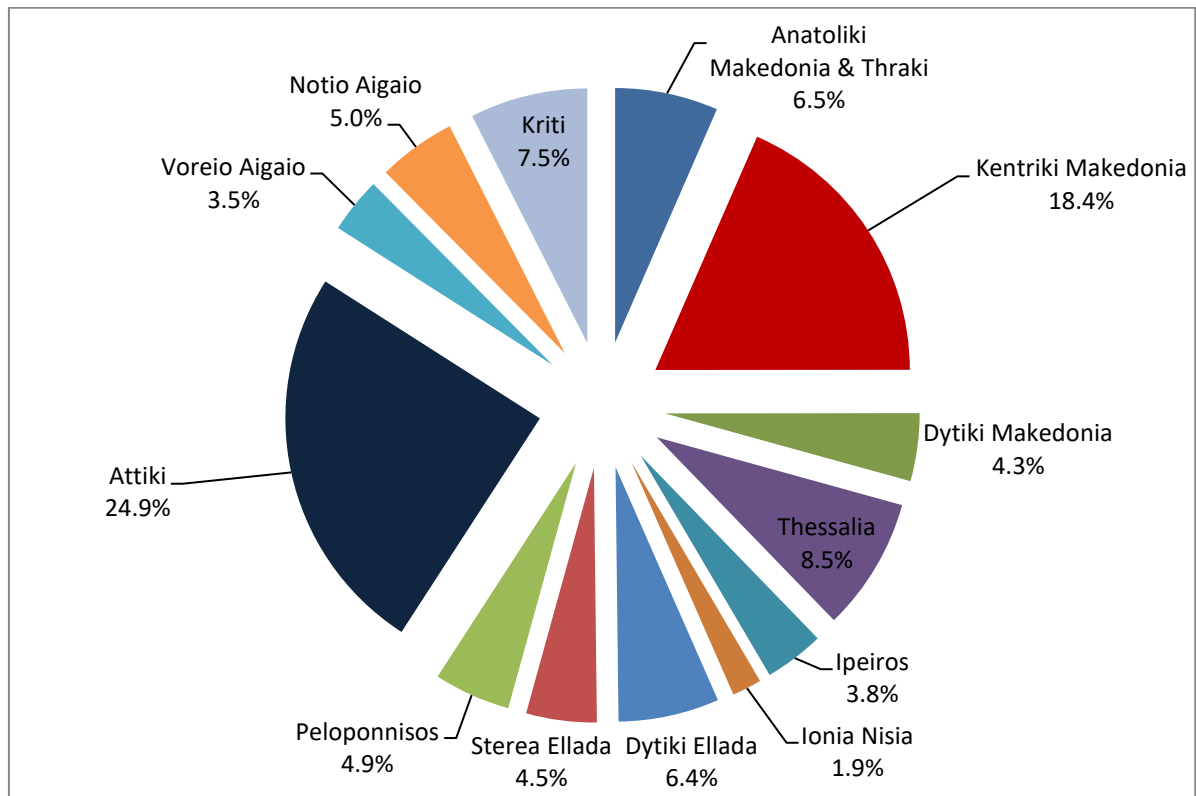
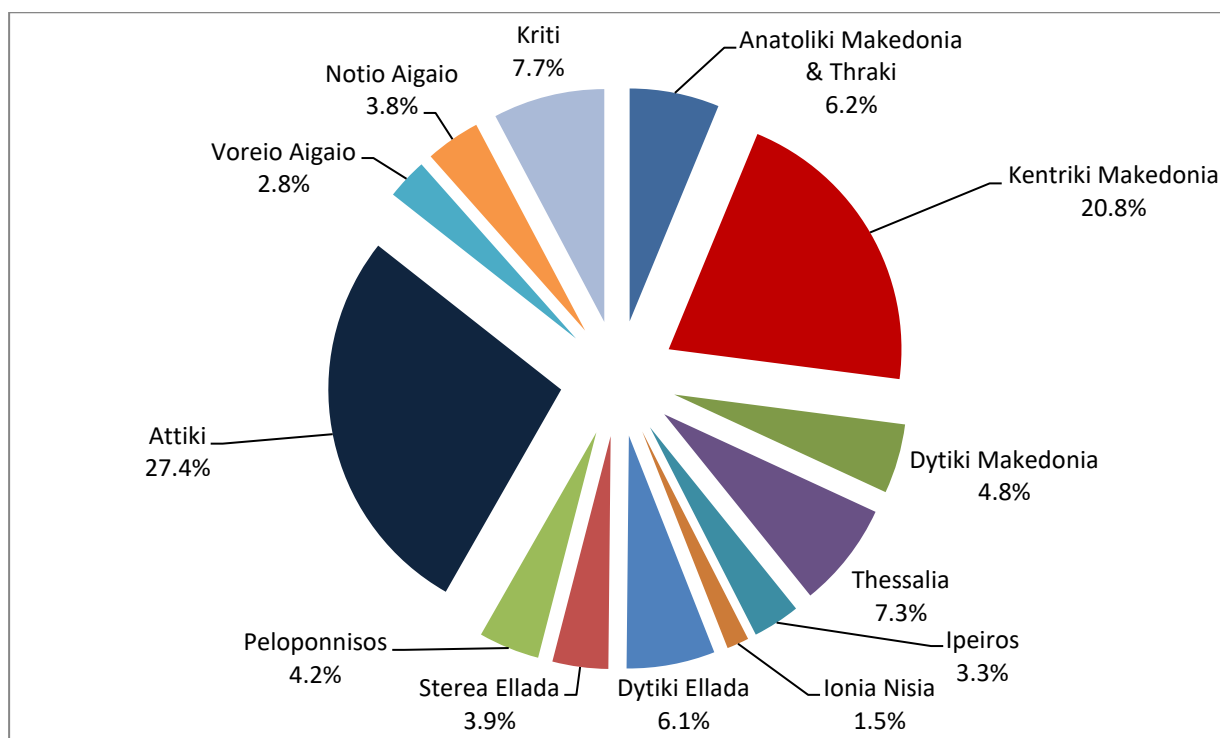


Table 3 presents data on the number of enrolled pupils and graduates for school years 2017/2018 and 2018/2019.

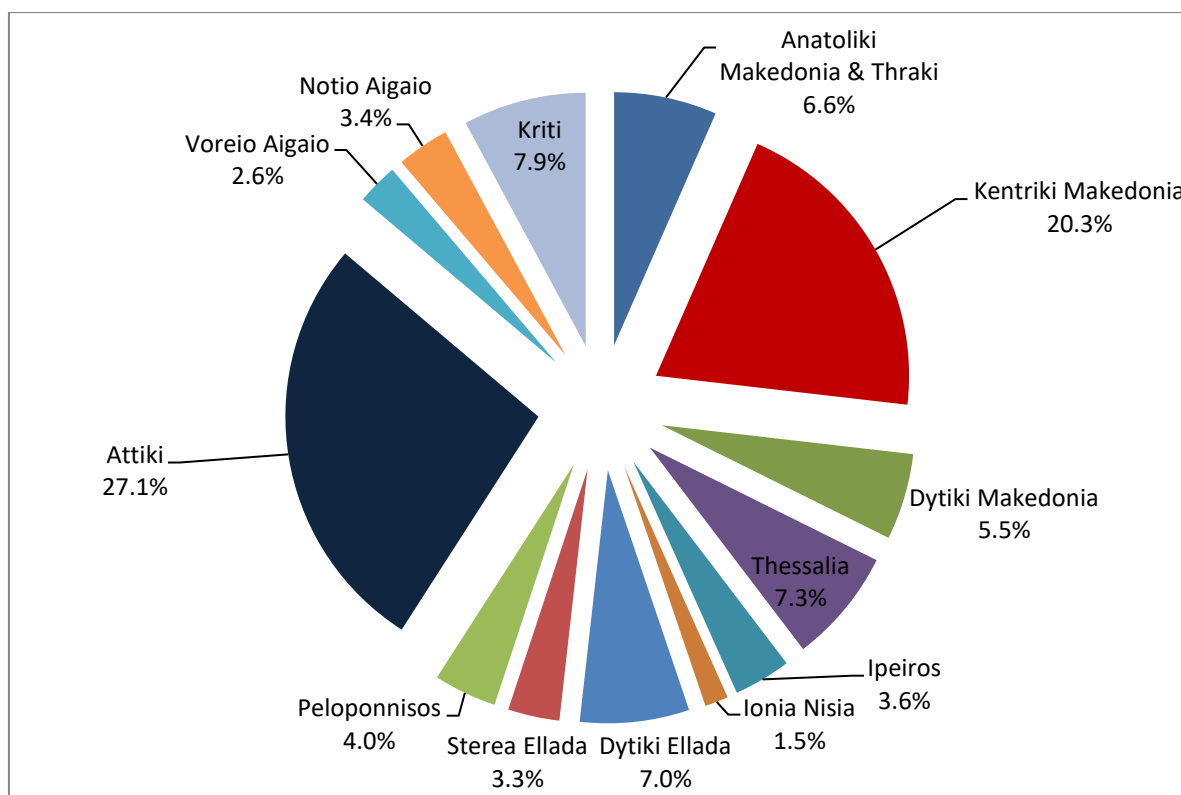
Table 3. Pupils enrolled and graduates by type of school unit and region

<i>By Type of School Unit</i>						
School units	Pupils enrolled			Graduates		
	2017/18	2018/19	Change (%)	2017/18	2018/19	Change (%)
EPAL of the Ministry of Education and Religious Affairs	88,312	95,212	7.8	22,880	19,515	-14.7
EPAS of the Ministry of Labour and Social Affairs	8,880	8,000	-9.9	3,586	3,322	-7.4
EPAS of the Ministry of Rural Development and Food	260	228	-12.3	144	170	18.1
TOTAL	97,452	103,440	6.1	26,610	23,007	-13.5
<i>By Region</i>						
Region (NUTS 2)	Pupils enrolled			Graduates		
	2017/18	2018/19	Change (%)	2017/18	2018/19	Change (%)
Anatoliki Makedonia, Thraki	6,151	6,443	4.7	1,810	1,512	-16.5
Kentriki Makedonia	19,911	21,539	8.2	5,384	4,660	-13.4
Dytiki Makedonia	4,867	5,000	2.7	1,471	1,267	-13.9
Thessalia	7,130	7,570	6.2	2,090	1,684	-19.4
Ipeiros	3,136	3,398	8.4	892	839	-5.9
Ionia Nisia	1,506	1,586	5.3	392	345	-12.0
Dytiki Ellada	6,167	6,348	2.9	1,824	1,606	-12.0
Stereia Ellada	3,799	4,005	5.4	1,112	758	-31.8
Peloponnisos	4,105	4,371	6.5	1,145	924	-19.3
Attiki	26,639	28,292	6.2	6,704	6,227	-7.1
Voreio Aigaio	2,790	2,941	5.4	802	605	-24.6
Notio Aigaio	3,730	3,934	5.5	1,010	771	-23.7
Kriti	7,521	8,013	6.5	1,974	1,809	-8.4
TOTAL	97,452	103,440	6.1	26,610	23,007	-13.5

Graph 4. Pupils enrolled by NUTS 2 region, school year 2018/19



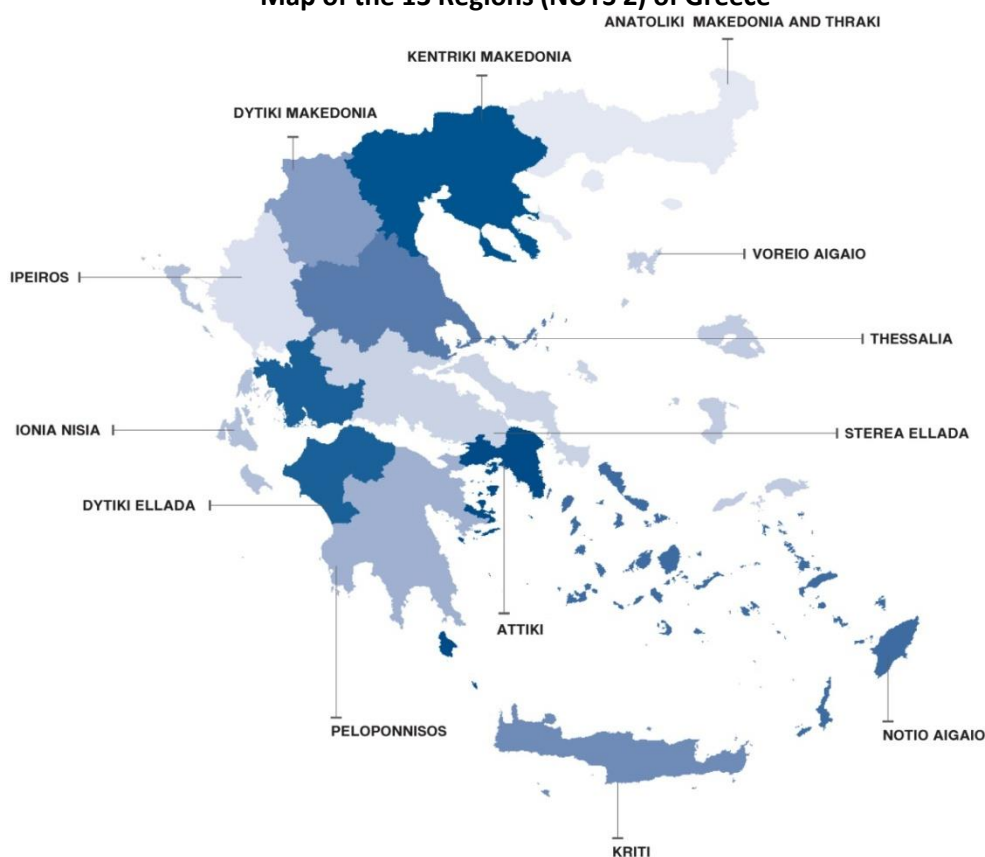
Graph 5. Graduates by NUTS 2 region, school year 2018/19



EXPLANATORY NOTES

Survey on Secondary Vocational Education	<p>Secondary Vocational Education includes:</p> <ul style="list-style-type: none"> - the Vocational Upper Secondary Schools (EPAL) - the Vocational Schools (EPAS) <p>EPAL and EPAS are under the competency of the Ministry of Education and Religious Affairs, the Ministry of Rural Development and Food and the Ministry of Labour and Social Affairs. Since the school year 2014/2015, public EPAS of the Ministry of Education and Religious Affairs were abolished, while private EPAS under the supervision of the Ministry of Education and Religious Affairs are still under operation.</p> <p>The survey is conducted on a yearly basis, by all Member States of the European Union, aiming at collecting data on the number of pupils enrolled, the school units and the number of the teaching staff.</p>
Legal Frame	<p>The survey is conducted by virtue of Regulation 452/2008 of the European Parliament and the Council and implementing Regulation 912/2013 of the European Commission.</p>
Statistical Units	<p>The statistical units are the school units.</p>
Coverage	<p>Greece total.</p>
Geographical Classification	<p>The geographical classification is based on Nomenclature of Territorial Units for Statistics.</p>

Map of the 13 Regions (NUTS 2) of Greece



Dissemination of results	The data are posted on a yearly basis on the website of ELSTAT.
Reference period	The data of the surveys refer to the end of school year 2018/2019. For comparability reasons, the data of the end of the previous school year 2017/2018 are also provided.
Methodology and coverage	<p>Until the school year 2013/2014, the survey on Secondary Vocational Education used to be a census, yearly survey and it was conducted by ELSTAT.</p> <p>From the school year 2014/2015 onwards, the data of the survey are collected as follows:</p> <ul style="list-style-type: none"> – As regards public school units of the Ministry of Education and Religious Affairs (EPAL), the data were extracted from the “live” e-platform “MySchool” of the Ministry of Education and Religious Affairs. – As regards public school units which are not under the competency of the Ministry of Education and Religious Affairs, data were collected via an annual census survey with the use of questionnaires. – As regards private school units, the data were collected via an annual census survey with the use of questionnaires.
References	More information on the Survey on Secondary Vocational Education, such as tables with the survey’s results, samples of questionnaires, etc., can be found on the webpage of ELSTAT www.statistics.gr and at the link: “Statistics”/ Population and Social Conditions / Education /Secondary Vocational Education”.