



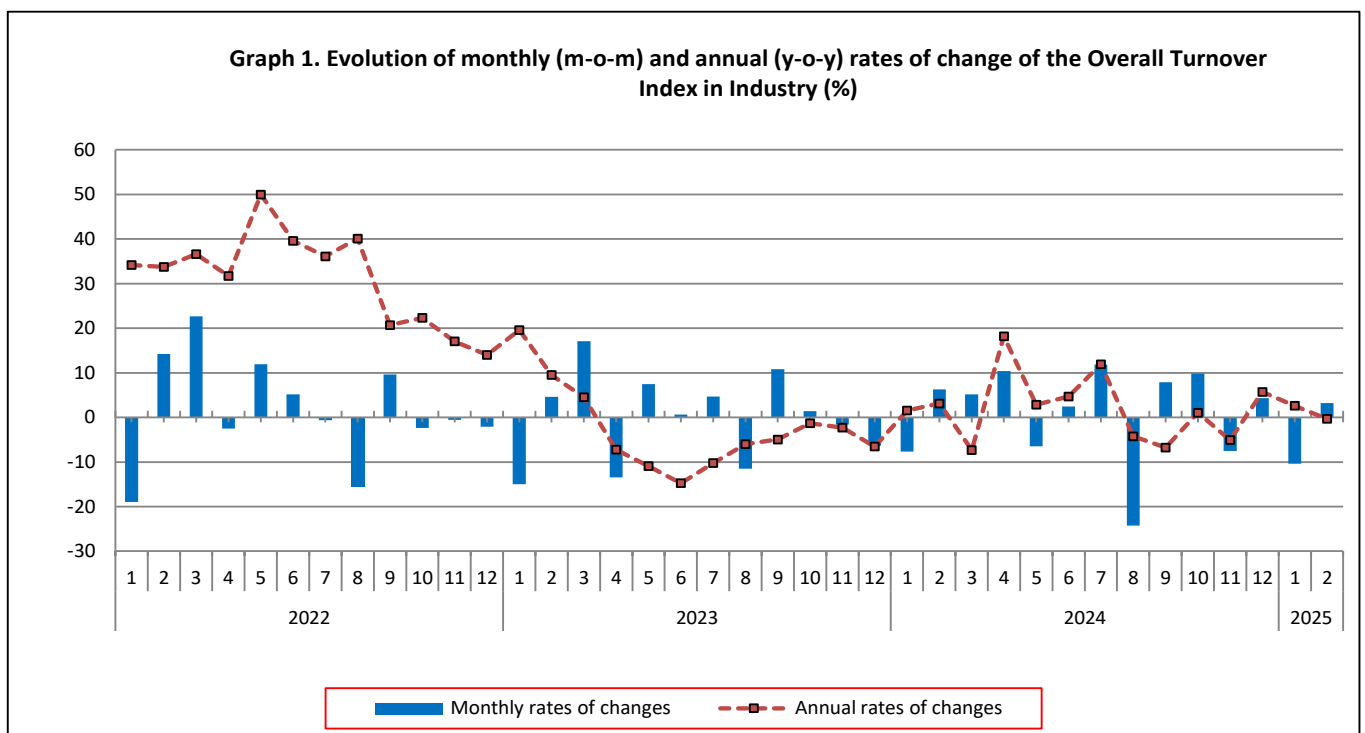
TURNOVER INDEX IN INDUSTRY February 2025, y-o-y decrease of 0.3%

The Hellenic Statistical Authority announces the Turnover Index in Industry with base year 2021=100.0 for February 2025, the evolution of which on the basis of provisional data, is as follows:

The Overall Turnover Index in Industry (both Domestic and Non-Domestic Market) in February 2025 recorded a decrease of 0.3% compared with the corresponding index of February 2024. The Overall Turnover Index in Industry in February 2024 increased by 3.1% compared with the corresponding index in February 2023 (Table 1).

The Overall Turnover Index in Industry in February 2025, compared with January 2025, recorded an increase of 3.2% (Table 6).

The average Overall Turnover Index in Industry for the 12-month period from March 2024 to February 2025 increased by 1.8%, compared with the corresponding index of the 12-month period from March 2023 to February 2024. The average Overall Turnover Index in Industry for the 12-month period from March 2023 to February 2024 decreased by 4.9% compared with the corresponding index of the 12-month period from March 2022 to February 2023 (Table 13).



Information on methodological issues:

Division of Business Statistics
Section of Manufacture-Construction Indices and Industrial Products
Deputy Head of Section: Vlachokosta Evrydiki
Tel: +30 213 135 2056
E-mail: e.vlachokosta@statistics.gr

Information on data provision:

Tel: +30 213 135 2022, 2308, 2310
E-mail: data.dissem@statistics.gr

Evolution of the Overall Turnover Index in Industry in February 2025

I. Annual changes of the Overall Turnover Index in Industry: February 2025 / February 2024

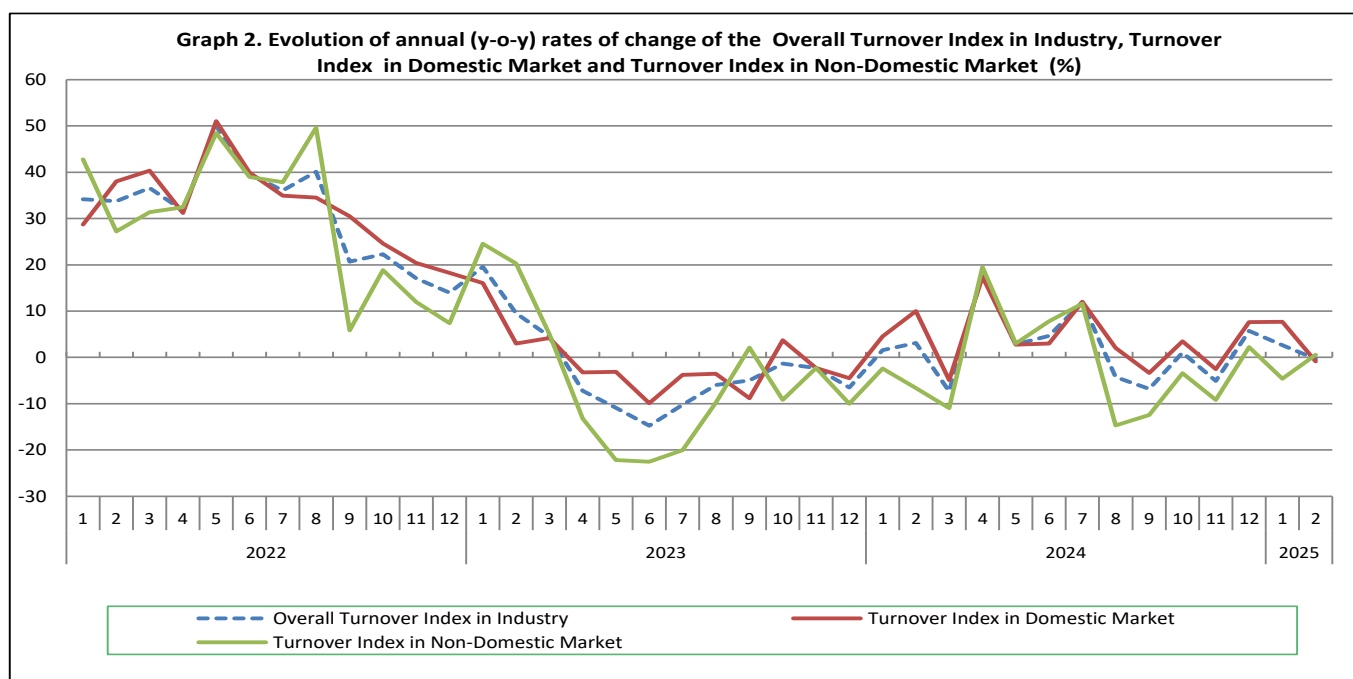
The 0.3% decrease of the Overall Turnover Index in Industry in February 2025, compared with the corresponding index in February 2024, was due to the following:

1. Changes in the sub-indices of the industrial sections (Table 1):

- The Turnover Index in Mining and quarrying decreased by 22.8%. The decrease was mainly the result of the annual changes of the sub-indices in the following 2-digit divisions: mining of coal and lignite - extraction of crude petroleum and natural gas - mining support service activities, mining of metal ores.
- The Turnover Index in Manufacturing increased by 0.003%. The increase was mainly the result of the annual changes of the sub-indices in the following 2-digit divisions: tobacco products, electrical equipment, repair and installation of machinery and equipment, motor vehicles, trailers and semi-trailers.

2. Changes in the sub-indices in Domestic and Non-Domestic Markets:

- The Turnover Index in Industry in Domestic Market decreased by 0.9% (Table 2).
- The Turnover Index in Industry in Non-Domestic Market increased by 0.6% (Table 3).



II. Annual changes of the Turnover Index in Industry in Domestic Market: February 2025 / February 2024

The 0.9% decrease of the Turnover Index in Industry in Domestic Market in February 2025, compared with February 2024, is due to the annual changes in the sub-indices of the following industrial sections (Table 2):

- The Turnover Index in Manufacturing decreased by 1.0%. The decrease was mainly the result of the annual changes of the sub-indices in the following 2-digit divisions: computers, electronic and optical products, textiles, wood and products of wood and cork, except furniture, coke and refined petroleum products.
- The Turnover Index in Mining and quarrying increased by 11.3%. The increase was mainly the result of the annual changes of the sub-indices in the following 2-digit divisions: mining of coal and lignite - extraction of crude petroleum and natural gas - mining support service activities, mining of metal ores.

III. Annual changes of the Turnover Index in Industry in Non-Domestic Market: February 2025 / February 2024

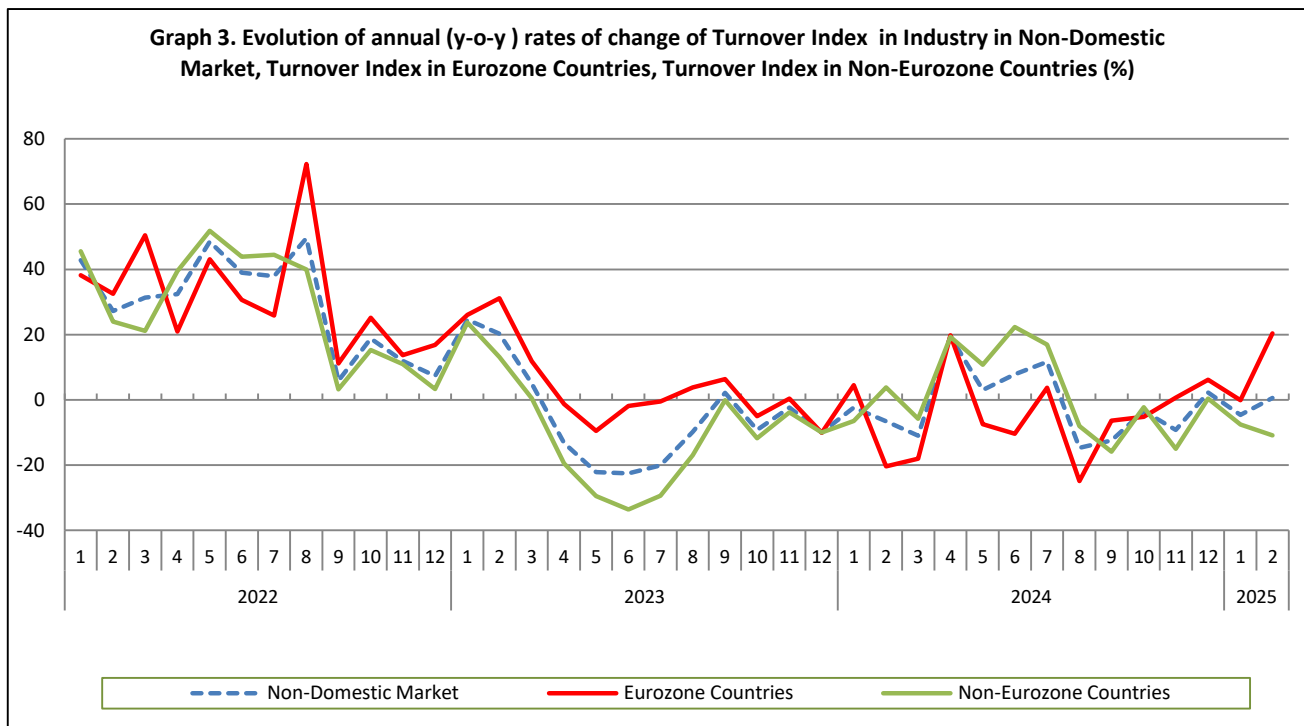
The 0.6% increase of the Turnover Index in Industry in Non-Domestic Market in February 2025, compared with February 2024, was due to the following:

1. Changes in the sub-indices of the industrial sections (Table 3):

- The Turnover Index in Manufacturing increased by 1.7%. The increase was mainly the result of the annual changes of the sub-indices in the following 2-digit divisions: tobacco products, electrical equipment, leather and related products, computers, electronic and optical products.
- The Turnover Index in Mining and quarrying decreased by 47.5%. The decrease was mainly the result of the annual changes of the sub-indices in the following 2-digit divisions: mining of coal and lignite - extraction of crude petroleum and natural gas - mining support service activities, mining of metal ores.

2. Changes in the sub-indices in Eurozone and Non-Eurozone countries:

- The Turnover Index in Industry in Eurozone countries increased by 20.3% (Table 4).
- The Turnover Index in Industry in Non-Eurozone countries decreased by 10.9% (Table 5).



IV. Monthly changes of the Overall Turnover Index in Industry: February 2025 / January 2025

The 3.2% increase of the Overall Turnover Index in Industry in February 2025, compared with the corresponding index in January 2025, was due to the following:

1. Changes in the sub-indices of industrial sections (Table 6):

- The Turnover Index in Manufacturing increased by 3.7%.
- The Turnover Index in Mining and quarrying decreased by 29.2%.

2. Changes in the sub-indices in Domestic and Non-Domestic Market:

- The Turnover Index in Industry in Domestic Market increased by 4.1% (Table 7).
- The Turnover Index in Industry in Non-Domestic Market increased by 1.7% (Table 8).

Table 1. Annual rates of change of the Turnover Index in Industry: Total Market

Base year: 2021=100.0

Code	Division	Weights	February			Rate of change (%)	
			2025*	2024*	2023	2025/2024	2024/2023
OVERALL INDEX			120.16	120.55	116.91	-0.3	3.1
B	MINING AND QUARRYING	100.00	107.44	139.08	108.79	-22.8	27.8
05-06-09	Mining of coal and lignite - Extraction of crude petroleum and natural gas - Mining support service activities	6.54	84.01	366.54	121.95	-77.1	200.6
07	Mining of metal ores	26.13	88.30	123.32	77.65	-28.4	58.8
08	Other mining and quarrying products	67.33	117.14	123.12	119.60	-4.9	2.9
C	MANUFACTURING	100.00	120.32	120.32	117.01	0.003	2.8
10	Food	21.71	127.31	125.65	116.54	1.3	7.8
11	Beverages	2.99	96.86	102.79	85.45	-5.8	20.3
12	Tobacco products	1.42	167.93	116.68	147.35	43.9	-20.8
13	Textiles	1.20	97.28	104.71	106.66	-7.1	-1.8
14	Wearing apparel	1.18	91.82	101.63	109.08	-9.7	-6.8
15	Leather and related products	0.20	87.94	84.80	100.11	3.7	-15.3
16	Wood and products of wood and cork, except furniture	0.78	109.14	120.28	110.28	-9.3	9.1
17	Paper and paper products	2.44	116.15	119.16	121.49	-2.5	-1.9
18	Printing and reproduction of recorded products	0.97	109.87	122.53	93.86	-10.3	30.5
19	Coke and refined petroleum products	24.35	115.87	127.20	140.21	-8.9	-9.3
20	Chemicals and chemical products	5.25	117.38	121.34	110.84	-3.3	9.5
21	Basic pharmaceutical products and pharmaceutical preparations	4.43	139.47	131.96	129.14	5.7	2.2
22	Rubber and plastic products	3.49	110.87	108.81	99.94	1.9	8.9
23	Other non-metallic mineral products	3.42	150.14	146.61	111.19	2.4	31.9
24	Basic metals	11.11	112.83	107.62	109.97	4.8	-2.1
25	Fabricated metal products, except machinery and equipment	4.58	108.58	109.96	93.52	-1.3	17.6
26	Computers, electronic and optical products	1.17	150.15	140.22	131.64	7.1	6.5
27	Electrical equipment	3.84	135.75	110.98	85.52	22.3	29.8
28	Machinery and equipment n.e.c.	1.62	109.28	102.43	105.87	6.7	-3.2
29	Motor vehicles, trailers and semi-trailers	0.26	90.22	77.81	131.19	15.9	-40.7
30	Other transport equipment	0.30	137.95	156.39	67.75	-11.8	130.8
31	Furniture	0.97	119.69	109.92	94.58	8.9	16.2
32	Other manufacturing	0.72	91.73	95.55	96.44	-4.0	-0.9
33	Repair and installation of machinery and equipment	1.61	121.31	104.04	87.39	16.6	19.0
MAIN INDUSTRIAL GROUPINGS							
1	Energy	24.13	115.78	128.00	140.16	-9.5	-8.7
2	Intermediate goods	34.47	117.11	114.66	106.83	2.1	7.3
3	Capital goods	7.19	115.00	108.36	98.19	6.1	10.4
4	Consumer Durables	1.90	130.24	122.15	102.41	6.6	19.3
5	Consumer Non-Durables	32.31	127.25	123.89	115.33	2.7	7.4

* Provisional data

Note: The indices and the percentage changes are rounded up to two and one decimal digits, respectively, when published.

Table 2. Annual rates of change of the Turnover Index in Industry: Domestic Market

Base year: 2021=100.0

Code	Division	Weights	February			Rate of change (%)	
			2025*	2024*	2023	2025/2024	2024/2023
OVERALL INDEX			123.49	124.57	113.24	-0.9	10.0
B	MINING AND QUARRYING	100.00	156.16	140.26	116.36	11.3	20.5
05-06-09	Mining of coal and lignite - Extraction of crude petroleum and natural gas - Mining support service activities	9.16	131.91	36.20	204.57	264.4	-82.3
07	Mining of metal ores	12.89	164.01	113.43	89.21	44.6	27.2
08	Other mining and quarrying products	77.94	157.71	156.92	110.48	0.5	42.0
C	MANUFACTURING	100.00	123.21	124.43	113.22	-1.0	9.9
10	Food	27.12	122.58	121.89	112.36	0.6	8.5
11	Beverages	4.38	93.38	98.14	84.49	-4.8	16.2
12	Tobacco products	1.00	145.54	124.74	109.20	16.7	14.2
13	Textiles	1.07	82.14	92.25	87.60	-11.0	5.3
14	Wearing apparel	1.21	91.94	99.10	98.93	-7.2	0.2
15	Leather and related products	0.25	81.68	84.60	106.67	-3.5	-20.7
16	Wood and products of wood and cork, except furniture	1.10	107.12	120.09	108.06	-10.8	11.1
17	Paper and paper products	3.30	114.27	118.04	119.39	-3.2	-1.1
18	Printing and reproduction of recorded products	1.29	110.73	118.91	96.88	-6.9	22.7
19	Coke and refined petroleum products	15.29	144.43	161.15	159.83	-10.4	0.8
20	Chemicals and chemical products	6.21	119.34	119.22	109.17	0.1	9.2
21	Basic pharmaceutical products and pharmaceutical preparations	4.50	140.82	129.31	117.72	8.9	9.8
22	Rubber and plastic products	3.60	111.34	109.26	99.44	1.9	9.9
23	Other non-metallic mineral products	3.97	170.05	163.50	118.13	4.0	38.4
24	Basic metals	8.73	110.03	107.63	102.00	2.2	5.5
25	Fabricated metal products, except machinery and equipment	5.73	112.47	110.66	90.37	1.6	22.4
26	Computers, electronic and optical products	0.49	125.24	183.65	147.86	-31.8	24.2
27	Electrical equipment	3.46	130.60	128.85	84.11	1.4	53.2
28	Machinery and equipment n.e.c.	1.79	112.01	99.16	95.90	13.0	3.4
29	Motor vehicles, trailers and semi-trailers	0.36	84.97	67.80	132.58	25.3	-48.9
30	Other transport equipment	0.33	140.07	146.21	68.32	-4.2	114.0
31	Furniture	1.39	123.02	110.68	92.32	11.1	19.9
32	Other manufacturing	0.95	80.81	89.65	89.81	-9.9	-0.2
33	Repair and installation of machinery and equipment	2.48	113.89	97.32	85.41	17.0	13.9
MAIN INDUSTRIAL GROUPINGS							
1	Energy	15.23	144.41	160.54	160.10	-10.0	0.3
2	Intermediate goods	35.14	119.14	120.53	104.79	-1.2	15.0
3	Capital goods	8.91	116.34	104.76	91.95	11.1	13.9
4	Consumer Durables	2.40	106.37	105.58	93.49	0.8	12.9
5	Consumer Non-Durables	38.32	121.90	119.77	108.56	1.8	10.3

* Provisional data

Note: The indices and the percentage changes are rounded up to two and one decimal digits, respectively, when published.

Table 3. Annual rates of change of the Turnover Index in Industry: Non-Domestic Market

Base year: 2021=100.0

Code	Division	Weights	February			Rate of change (%)	
			2025*	2024*	2023	2025/2024	2024/2023
OVERALL INDEX			115.08	114.42	122.51	0.6	-6.6
B	MINING AND QUARRYING	100.00	72.60	138.25	103.38	-47.5	33.7
05-06-09	Mining of coal and lignite - Extraction of crude petroleum and natural gas - Mining support service activities	4.66	16.66	831.00	5.77	-98.0	14301.9
07	Mining of metal ores	35.59	68.69	125.89	74.66	-45.4	68.6
08	Other mining and quarrying products	59.75	79.30	91.60	128.10	-13.4	-28.5
C MANUFACTURING		100.00	115.87	113.98	122.86	1.7	-7.2
10	Food	13.38	142.06	137.42	129.60	3.4	6.0
11	Beverages	0.85	124.47	139.71	93.08	-10.9	50.1
12	Tobacco products	2.08	184.45	110.74	175.50	66.6	-36.9
13	Textiles	1.40	115.10	119.37	129.06	-3.6	-7.5
14	Wearing apparel	1.13	91.60	105.82	125.89	-13.4	-15.9
15	Leather and related products	0.12	108.38	85.45	78.68	26.8	8.6
16	Wood and products of wood and cork, except furniture	0.28	121.25	121.41	123.55	-0.1	-1.7
17	Paper and paper products	1.12	124.73	124.25	131.04	0.4	-5.2
18	Printing and reproduction of recorded products	0.48	106.25	137.64	81.27	-22.8	69.4
19	Coke and refined petroleum products	38.31	98.31	106.32	128.15	-7.5	-17.0
20	Chemicals and chemical products	3.78	112.41	126.71	115.06	-11.3	10.1
21	Basic pharmaceutical products and pharmaceutical preparations	4.32	137.30	136.21	147.47	0.8	-7.6
22	Rubber and plastic products	3.32	110.10	108.05	100.77	1.9	7.2
23	Other non-metallic mineral products	2.57	102.77	106.42	94.67	-3.4	12.4
24	Basic metals	14.76	115.38	107.61	117.23	7.2	-8.2
25	Fabricated metal products, except machinery and equipment	2.82	96.41	107.79	103.35	-10.6	4.3
26	Computers, electronic and optical products	2.23	158.55	125.56	126.16	26.3	-0.5
27	Electrical equipment	4.42	141.97	89.43	87.22	58.8	2.5
28	Machinery and equipment n.e.c.	1.34	103.67	109.17	126.39	-5.0	-13.6
29	Motor vehicles, trailers and semi-trailers	0.10	120.00	134.55	123.33	-10.8	9.1
30	Other transport equipment	0.26	133.76	176.53	66.63	-24.2	164.9
31	Furniture	0.32	97.59	104.89	109.61	-7.0	-4.3
32	Other manufacturing	0.36	136.63	119.82	123.73	14.0	-3.2
33	Repair and installation of machinery and equipment	0.27	226.96	199.63	115.66	13.7	72.6
MAIN INDUSTRIAL GROUPINGS							
1	Energy	37.70	98.13	107.95	127.87	-9.1	-15.6
2	Intermediate goods	33.44	113.85	105.25	110.10	8.2	-4.4
3	Capital goods	4.57	111.00	119.08	116.79	-6.8	2.0
4	Consumer Durables	1.15	206.25	174.94	130.81	17.9	33.7
5	Consumer Non-Durables	23.14	140.76	134.27	132.41	4.8	1.4

* Provisional data

Note: The indices and the percentage changes are rounded up to two and one decimal digits, respectively, when published.

Table 4. Annual rates of change of the Turnover Index in Industry: Eurozone Countries

Base year: 2021=100.0

Code	Sections and main groupings	February			Rate of change (%)	
		2025*	2024*	2023	2025/2024	2024/2023
OVERALL INDEX		144.12	119.76	150.38	20.3	-20.4
INDUSTRIAL SECTIONS						
B	MINING AND QUARRYING	39.55	190.17	72.32	-79.2	162.9
C	MANUFACTURING	146.71	118.02	152.32	24.3	-22.5
MAIN INDUSTRIAL GROUPINGS						
1	Energy	157.45	88.62	243.75	77.7	-63.6
2	Intermediate goods	133.39	114.12	120.82	16.9	-5.5
3	Capital goods	141.26	130.28	109.93	8.4	18.5
4	Consumer Durables	259.73	198.33	144.31	31.0	37.4
5	Consumer Non-Durables	142.59	138.48	135.44	3.0	2.2

* Provisional data

Table 5. Annual rates of change of the Turnover Index in Industry: Non-Eurozone Countries

Base year: 2021=100.0

Code	Sections and main groupings	February			Rate of change (%)	
		2025*	2024*	2023	2025/2024	2024/2023
OVERALL INDEX		99.35	111.52	107.41	-10.9	3.8
INDUSTRIAL SECTIONS						
B	MINING AND QUARRYING	101.61	92.68	130.64	9.6	-29.1
C	MANUFACTURING	99.32	111.81	107.06	-11.2	4.4
MAIN INDUSTRIAL GROUPINGS						
1	Energy	84.59	112.36	101.42	-24.7	10.8
2	Intermediate goods	100.09	99.00	102.55	1.1	-3.5
3	Capital goods	96.60	113.75	120.05	-15.1	-5.2
4	Consumer Durables	130.63	141.86	111.73	-7.9	27.0
5	Consumer Non-Durables	138.73	129.61	129.06	7.0	0.4

* Provisional data

Note: The indices and the percentage changes are rounded up to two and one decimal digits, respectively, when published.

Table 6. Monthly rate of change of the Turnover Index in Industry: Total Market

Base year: 2021=100.0

Code	Sections and main groupings	February 2025*	January 2025**	Rate of change (%) Feb. 2025 / Jan. 2025
OVERALL INDEX		120.16	116.43	3.2
INDUSTRIAL SECTIONS				
B	MINING AND QUARRYING	107.44	151.81	-29.2
C	MANUFACTURING	120.32	115.98	3.7
MAIN INDUSTRIAL GROUPINGS				
1	Energy	115.78	123.26	-6.1
2	Intermediate goods	117.11	112.48	4.1
3	Capital goods	115.00	88.95	29.3
4	Consumer Durables	130.24	78.59	65.7
5	Consumer Non-Durables	127.25	123.88	2.7

Table 7. Monthly rate of change of the Turnover Index in Industry: Domestic Market

Base year: 2021=100.0

Code	Sections and main groupings	February 2025*	January 2025**	Rate of change (%) Feb. 2025 / Jan. 2025
OVERALL INDEX		123.49	118.58	4.1
INDUSTRIAL SECTIONS				
B	MINING AND QUARRYING	156.16	269.35	-42.0
C	MANUFACTURING	123.21	117.29	5.0
MAIN INDUSTRIAL GROUPINGS				
1	Energy	144.41	137.63	4.9
2	Intermediate goods	119.14	119.51	-0.3
3	Capital goods	116.34	85.25	36.5
4	Consumer Durables	106.37	82.10	29.6
5	Consumer Non-Durables	121.90	120.19	1.4

Table 8. Monthly rate of change of the Turnover Index in Industry: Non-Domestic Market

Base year: 2021=100.0

Code	Sections and main groupings	February 2025*	January 2025**	Rate of change (%) Feb. 2025 / Jan. 2025
OVERALL INDEX		115.08	113.14	1.7
INDUSTRIAL SECTIONS				
B	MINING AND QUARRYING	72.60	67.77	7.1
C	MANUFACTURING	115.87	113.98	1.7
MAIN INDUSTRIAL GROUPINGS				
1	Energy	98.13	114.40	-14.2
2	Intermediate goods	113.85	101.20	12.5
3	Capital goods	111.00	99.98	11.0
4	Consumer Durables	206.25	67.38	206.1
5	Consumer Non-Durables	140.76	133.19	5.7

* Provisional data ** Revised data

Note: The indices and the percentage changes are rounded up to two and one decimal digits, respectively, when published.

Table 9. Monthly rate of change of the Turnover Index in Industry: Eurozone Countries

Base year: 2021=100.0

Code	Sections and main groupings	February 2025*	January 2025**	Rate of change (%) Feb. 2025 / Jan. 2025
OVERALL INDEX		144.12	133.38	8.1
INDUSTRIAL SECTIONS				
B	MINING AND QUARRYING	39.55	45.88	-13.8
C	MANUFACTURING	146.71	135.55	8.2
MAIN INDUSTRIAL GROUPINGS				
1	Energy	157.45	167.07	-5.8
2	Intermediate goods	133.39	112.72	18.3
3	Capital goods	141.26	132.44	6.7
4	Consumer Durables	259.73	81.26	219.6
5	Consumer Non-Durables	142.59	140.46	1.5

* Provisional data ** Revised data

Table 10. Monthly rate of change of the Turnover Index in Industry: Non-Eurozone Countries

Base year: 2021=100.0

Code	Sections and main groupings	February 2025*	January 2025**	Rate of change (%) Feb. 2025 / Jan. 2025
OVERALL INDEX		99.35	102.17	-2.8
INDUSTRIAL SECTIONS				
B	MINING AND QUARRYING	101.61	86.98	16.8
C	MANUFACTURING	99.32	102.40	-3.0
MAIN INDUSTRIAL GROUPINGS				
1	Energy	84.59	102.38	-17.4
2	Intermediate goods	100.09	93.08	7.5
3	Capital goods	96.60	84.53	14.3
4	Consumer Durables	130.63	47.76	173.5
5	Consumer Non-Durables	138.73	125.14	10.9

* Provisional data ** Revised data

Note: The indices and the percentage changes are rounded up to two and one decimal digits, respectively, when published.

Table 11. Evolution of the Turnover Index in Industry (y-o-y changes): Total Market

Base year: 2021=100.0

Year and month	Overall Index (Total Market)		Turnover Index in Industry in Domestic Market		Turnover Index in Industry in Non-Domestic Market	
	Index	Annual rate of change (%)	Index	Annual rate of change (%)	Index	Annual rate of change (%)
2024*: 2	120.55	3.1	124.57	10.0	114.42	-6.6
3	126.81	-7.3	128.61	-4.9	124.07	-11.0
4	139.96	18.2	144.18	17.4	133.53	19.5
5	130.91	2.8	138.87	2.7	118.77	3.0
6	134.07	4.7	142.13	3.0	121.78	7.8
7	150.00	11.9	160.55	12.0	133.90	11.6
8	113.60	-4.3	124.84	2.1	96.44	-14.7
9	122.54	-6.8	131.10	-3.4	109.48	-12.4
10	134.61	1.0	146.69	3.5	116.17	-3.4
11	124.51	-5.1	131.31	-2.6	114.13	-9.2
12	129.89	5.7	141.11	7.6	112.76	2.2
2025*: 1	116.43	2.6	118.58	7.7	113.14	-4.6
2	120.16	-0.3	123.49	-0.9	115.08	0.6

*Provisional data

Table 12. Evolution of the Turnover Index in Industry (y-o-y changes): Non-Domestic Market

Base year: 2021=100.0

Year and month	Overall Index (Non-Domestic Market)		Turnover Index in Industry in Eurozone Countries		Turnover Index in Industry in Non-Eurozone Countries	
	Index	Annual rate of change (%)	Index	Annual rate of change (%)	Index	Annual rate of change (%)
2024*: 2	114.42	-6.6	119.76	-20.4	111.52	3.8
3	124.07	-11.0	138.15	-18.0	116.45	-5.8
4	133.53	19.5	149.89	19.8	124.67	19.3
5	118.77	3.0	129.70	-7.5	112.85	10.8
6	121.78	7.8	127.60	-10.4	118.63	22.4
7	133.90	11.6	142.18	3.7	129.42	17.0
8	96.44	-14.7	95.56	-24.9	96.91	-8.0
9	109.48	-12.4	120.35	-6.3	103.60	-15.9
10	116.17	-3.4	128.37	-5.2	109.56	-2.2
11	114.13	-9.2	132.50	0.7	104.18	-15.0
12	112.76	2.2	108.92	6.1	114.84	0.4
2025*: 1	113.14	-4.6	133.38	-0.1	102.17	-7.5
2	115.08	0.6	144.12	20.3	99.35	-10.9

*Provisional data

Note: The indices and the percentage changes are rounded up to two and one decimal digits, respectively, when published.

Table 13. Average indices and rates of change (%) of the 12-month periods of Turnover Index in Industry: Total Market
Base year: 2021=100.0

Code	Division	Average Indices of 12-month periods			Rate of change (%)	
		Mar. 2024*- Feb. 2025*	Mar. 2023- Feb. 2024*	Mar. 2022- Feb. 2023	2025/2024	2024/2023
OVERALL INDEX		128.62	126.34	132.92	1.8	-4.9
B	MINING AND QUARRYING	134.44	117.37	105.29	14.6	11.5
05-06-09	Mining of coal and lignite - Extraction of crude petroleum and natural gas - Mining support service activities	122.67	128.09	90.39	-4.2	41.7
07	Mining of metal ores	122.54	108.97	89.51	12.5	21.7
08	Other mining and quarrying products	140.21	119.58	112.86	17.2	6.0
C	MANUFACTURING	128.55	126.45	133.26	1.7	-5.1
10	Food	135.09	130.21	124.31	3.8	4.7
11	Beverages	147.34	136.72	121.84	7.8	12.2
12	Tobacco products	172.05	143.74	129.73	19.7	10.8
13	Textiles	106.58	108.00	111.38	-1.3	-3.0
14	Wearing apparel	96.67	103.81	111.82	-6.9	-7.2
15	Leather and related products	108.97	119.19	112.27	-8.6	6.2
16	Wood and products of wood and cork. except furniture	120.92	122.20	122.62	-1.0	-0.3
17	Paper and paper products	122.80	125.02	130.33	-1.8	-4.1
18	Printing and reproduction of recorded products	124.30	121.11	118.32	2.6	2.4
19	Coke and refined petroleum products	128.34	135.96	167.46	-5.6	-18.8
20	Chemicals and chemical products	116.20	114.94	128.80	1.1	-10.8
21	Basic pharmaceutical products and pharmaceutical preparations	143.23	134.83	118.09	6.2	14.2
22	Rubber and plastic products	112.24	109.70	114.82	2.3	-4.5
23	Other non-metallic mineral products	151.20	140.50	124.10	7.6	13.2
24	Basic metals	112.19	108.13	125.32	3.7	-13.7
25	Fabricated metal products. except machinery and equipment	121.25	118.19	113.17	2.6	4.4
26	Computers. electronic and optical products	137.65	130.16	129.56	5.8	0.5
27	Electrical equipment	133.49	122.00	118.30	9.4	3.1
28	Machinery and equipment n.e.c.	123.49	117.59	112.51	5.0	4.5
29	Motor vehicles. trailers and semi-trailers	145.56	135.06	126.78	7.8	6.5
30	Other transport equipment	145.05	131.75	124.66	10.1	5.7
31	Furniture	128.80	129.06	119.04	-0.2	8.4
32	Other manufacturing	110.16	118.75	115.87	-7.2	2.5
33	Repair and installation of machinery and equipment	137.02	123.57	120.04	10.9	2.9
MAIN INDUSTRIAL GROUPINGS						
1	Energy	128.34	135.95	167.22	-5.6	-18.7
2	Intermediate goods	120.92	116.49	123.46	3.8	-5.6
3	Capital goods	127.51	122.43	116.46	4.2	5.1
4	Consumer Durables	140.60	139.43	126.24	0.8	10.5
5	Consumer Non-Durables	136.60	129.78	121.45	5.3	6.9

*Provisional data

Note: The indices and the percentage changes are rounded up to two and one decimal digits, respectively, when published.

METHODOLOGICAL NOTES

Generally	The Industrial Turnover Index is an indicator of an enterprise's business cycle showing the monthly evolution of the market of goods and services in industry. The first compilation of the Turnover Index was completed by the Hellenic Statistical Authority in 2006, with base year 2000=100.0 and is compiled from 2000 onwards.
Purpose of the index	The purpose of this index is to measure the monthly activity of the industrial sector in terms of value. Turnover comprises the totals invoiced by the observation units during the reference period and corresponds to the market sales of goods or services supplied to third parties. The purposes and the characteristics of the Turnover Index apply, as well, to the indices for the distinction between domestic and non-domestic turnover.
Legal Framework	The compilation and publication of the Turnover Index is based on the Regulation (EU) No 2019/2152 of the European Parliament and of the Council on European business statistics, as well as Commission Implementing Regulation (EU) No 2020/1197 laying down technical specifications and arrangements pursuant to Regulation (EU) No 2019/2152. Furthermore, the indices are governed by Regulation (EC) No 1893/2006 of the European Parliament and of the Council.
Reference period	Month.
Base year	2021=100.0.
Revision	Pursuant to the provisions of Council Regulation No 2019/2152 concerning the indices, they are updated, every five (5) years in years ending in 0 or 5, while, in the current revision 2021=100.0 due to the impact of the pandemic, they were revised with base year the year 2021.
Statistical classifications	At the level of classes of economic activities, the statistical classification of economic activities NACE Rev. 2 of EU was used (Regulation No 1893/2006), while at the level of main industrial groupings, the allocation of two-digit and three-digit NACE Rev. 2 headings to categories of aggregate classification was used, in accordance with Commission Regulation No 656/2007.
Geographical coverage	The index covers the whole Country.
Coverage of economic activities	The Turnover Index in Industry is compiled for all activities listed in Sections B (mining and quarrying) and C (manufacturing) of the NACE Rev. 2 statistical classification.
Computation of the Index	The Turnover Index in Industry is a fixed base index. This index is calculated at a first stage at the four-digit level of economic activity and subsequently, with the implementation of appropriate weighting coefficients, the index is calculated at higher levels (three-level and two-level of economic activity) as well as at the level of Main Industrial Groupings (MIGs).
Publication of data	The Turnover Index in Industry (2021=100.0) is released since December 2024 with October 2024 as first reference month. Data with base year 2021=100.0 are available from January 2000 onwards.
References	More information about the methodology concerning the compilation and calculation of the index and for the time series is available on the website of the Hellenic Statistical Authority (ELSTAT) (http://www.statistics.gr/en/statistics/-/publication/DKT24/).