



HELLENIC REPUBLIC

HELLENIC STATISTICAL AUTHORITY

Piraeus, 13 February 2020

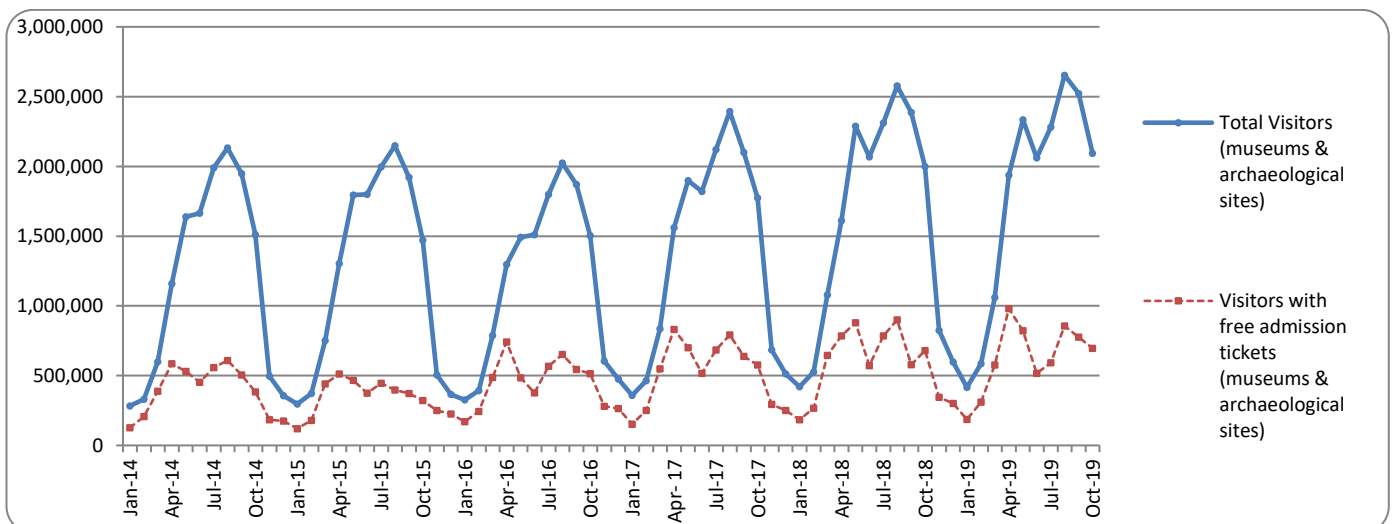


PRESS RELEASE SURVEY ON MUSEUMS AND ARCHAEOLOGICAL SITES ATTENDANCE OCTOBER 2019

The Hellenic Statistical Authority (ELSTAT) announces the results of the *Survey on Museums and Archaeological Sites Attendance* for October 2019. More specifically:

- In October 2019 compared with the corresponding month of 2018, Museums experienced a 2.2% decrease in the number of visitors and a 8.8% decrease in the number of free admission visitors as well as a 27.0% increase in their receipts (Table 1).
- In October 2019 compared with the corresponding month of 2018, the number of visitors at Archaeological sites recorded an increase of 7.6%, while an increase of 8.8% was observed in the number of free admission visitors and a 10.8% increase in the corresponding receipts (Table 1).
- During the ten-month period from January to October 2019, an increase of 4.1% was observed in the number of visitors of Museums, while an increase of 2.1% was recorded in the number of free admission visitors and a 28.8% increase in the relevant receipts, in comparison with the corresponding period of 2018 (Table 2).
- As regards Archaeological sites, during the ten-month period from January to October 2019, an increase of 11.6% was recorded in the number of visitors, while a 3.6% increase was observed in the number of free admission visitors and a 9.8% increase in the relevant receipts, in comparison with the corresponding period of 2018 (Table 2).

Graph 1: Visitors of Museums and Archaeological sites (January 2014 – October 2019)



Information on methodological issues:

Sectoral Statistics Division
Tourism and Cultural Statistics Section
Head of the Section: Asimina Katri
Tel: +30 213 135 2168
Fax: +30 213 135 2947
e-mail: a.katri@statistics.gr

Information for data provision:

Tel. +30 213 135 2022, 2308, 2310
e-mail: Data.dissem@statistics.gr

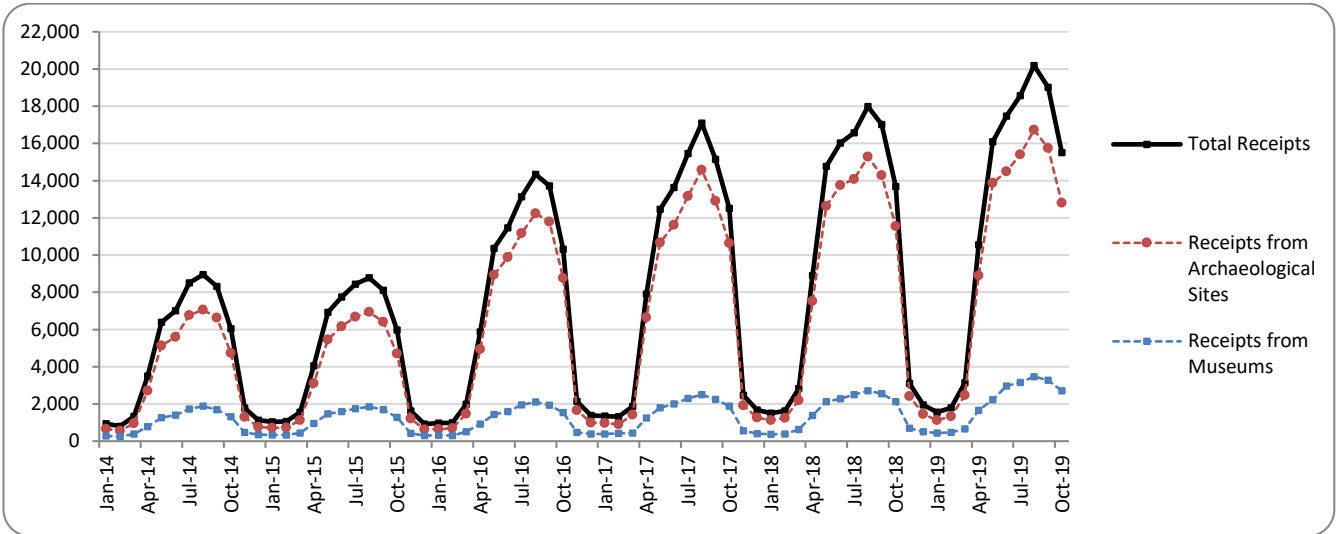
**TABLE 1: VISITORS OF MUSEUMS AND ARCHAEOLOGICAL SITES - TOTAL RECEIPTS
(OCTOBER 2018 & OCTOBER 2019)**

I. NUMBER OF VISITORS			
Museums and Archaeological sites	2018	2019	Change 2019/2018
Total number of visitors (A+B)	1,999,134	2,092,692	4.7%
A. Museums (C+E)	596,868	583,477	-2.2%
Acropolis Museum	187,883	167,613	-10.8%
National Archaeological	61,337	59,389	-3.2%
Ancient Olympia	16,550	17,990	8.7%
Palace of the Grand Master (Rhodes)	29,854	30,328	1.6%
Herakleion Archaeological (Crete)	72,290	69,225	-4.2%
White Tower	19,112	23,775	24.4%
Delphi	27,027	29,625	9.6%
Other museums	182,815	185,532	1.5%
B. Archaeological Sites (D+F)	1,402,266	1,509,215	7.6%
Epidavros ⁽¹⁾	52,790	60,587	14.8%
The Acropolis of Mycenae & Atreus' Treasure	51,627	56,591	9.6%
The Acropolis of Athens ⁽²⁾	311,159	349,271	12.2%
Sounio	29,789	36,631	23.0%
The Acropolis of Lindos	61,290	62,991	2.8%
Royal Tombs of Vergina	17,154	20,678	20.5%
Ancient Olympia	52,388	55,143	5.3%
Knossos (Crete)	105,182	112,466	6.9%
Phaistos (Crete)	17,365	16,040	-7.6%
Ancient Korinthos ⁽¹⁾	25,021	31,165	24.6%
Mystras ⁽¹⁾	14,322	15,747	9.9%
Delphi	39,913	45,710	14.5%
Other archaeological sites	624,266	646,195	3.5%
II. VISITORS WHO PAID TICKET			
	2018	2019	Change 2019/2018
Total number of visitors who paid ticket (C+D)	1,319,034	1,396,557	5.9%
C. Museums	347,592	356,126	2.5%
D. Archaeological sites	971,442	1,040,431	7.1%
III. VISITORS WITH FREE ADMISSION TICKETS			
	2018	2019	Change 2019/2018
Total number of visitors with free admission ticket (E+F)	680,100	696,135	2.4%
E. Museums	249,276	227,351	-8.8%
F. Archaeological sites	430,824	468,784	8.8%
IV. RECEIPTS (euros)			
	2018	2019	Change 2019/2018
Total Receipts (G+H)	13,677,417	15,504,511	13.4%
G. Museums	2,129,703	2,704,372	27.0%
H. Archaeological sites	11,547,714	12,800,139	10.8%

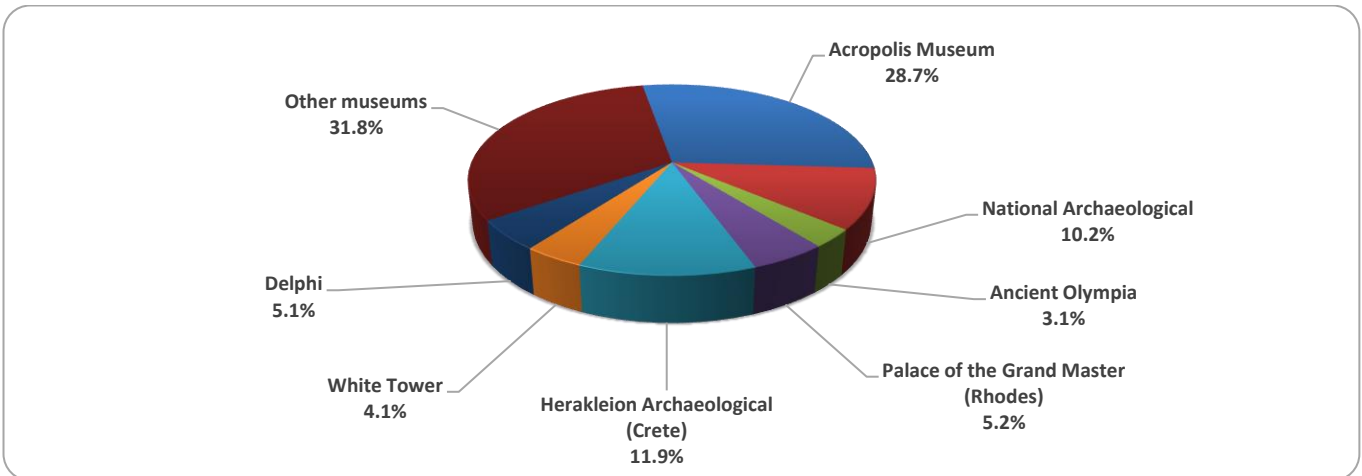
⁽¹⁾ Flat rate ticket, valid both for the museum and the archaeological site.

The following graphs depict the evolution of the receipts (Graph 2), as well as the number of visitors by Museum and Archaeological Site (Graphs 3 and 4, respectively).

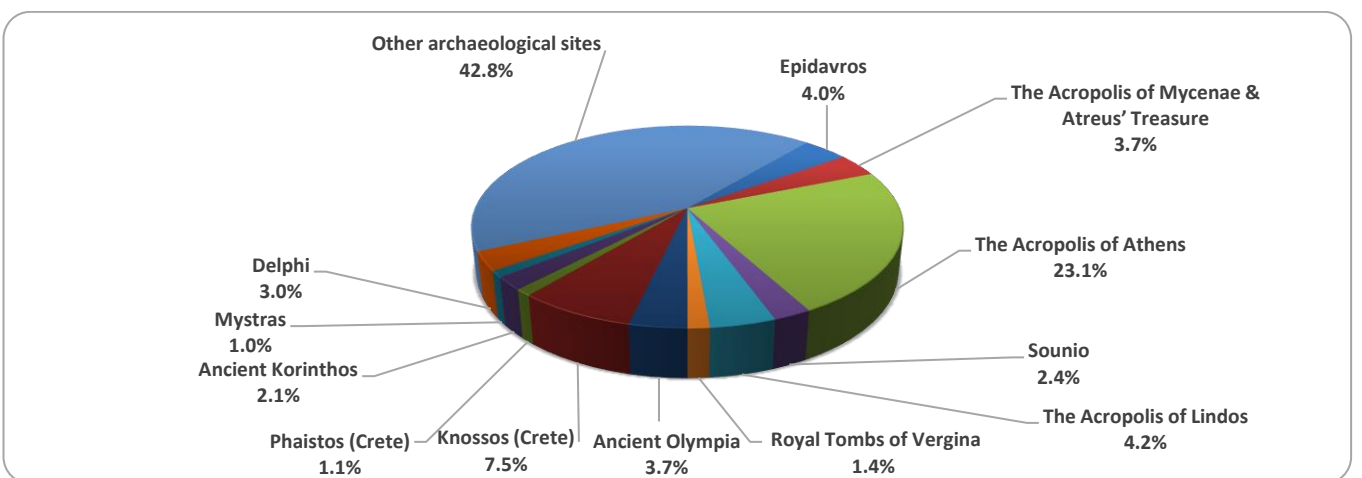
Graph 2: Receipts from Museums and Archaeological Sites (January 2014 – October 2019)
(in thousand euro)



Graph 3: Percentage distribution of visitors by Museum, October 2019



Graph 4: Percentage distribution of visitors by Archaeological site, October 2019



**TABLE 2: VISITORS OF MUSEUMS AND ARCHAEOLOGICAL SITES - TOTAL RECEIPTS
(2017, 2018, JANUARY-OCTOBER 2018 & 2019)**

I. VISITORS					
Museums and Archaeological sites	2017	2018	JANUARY-OCTOBER		change 2019/2018
			2018	2019	
Total number of visitors (A+B)	16,524,557	18,603,282	16,595,472	18,141,567	9.3%
A. Museums (C+E)	5,191,781	5,702,211	5,125,526	5,337,727	4.1%
Acropolis Museum	1,593,362	1,774,304	1,585,527	1,579,711	-0.4%
National Archaeological	545,555	594,219	524,744	541,966	3.3%
Ancient Olympia	145,118	156,658	147,932	151,009	2.1%
Palace of the Grand Master (Rhodes)	235,413	242,759	232,998	249,644	7.1%
Herakleion Archaeological (Crete)	426,191	555,031	529,263	626,563	18.4%
White Tower	268,149	225,944	189,556	213,733	12.8%
Delphi	211,827	249,754	229,552	252,697	10.1%
Other museums	1,766,166	1,903,542	1,685,954	1,722,404	2.2%
B. Archaeological Sites (D+F)	11,332,776	12,901,071	11,469,946	12,803,840	11.6%
Epidavros ⁽¹⁾	469,060	548,900	523,397	508,772	-2.8%
The Acropolis of Mycenae & Atreus' Treasure	412,397	495,993	470,125	473,110	0.6%
The Acropolis of Athens ⁽²⁾	2,766,218	3,150,604	2,858,036	3,256,962	14.0%
Sounio	259,709	306,665	282,374	310,401	9.9%
The Acropolis of Lindos ⁽³⁾	441,012	489,137	484,873	517,946	6.8%
Royal Tombs of Vergina	203,632	222,503	196,449	198,763	1.2%
Ancient Olympia	481,252	484,238	454,847	434,613	-4.4%
Knossos (Crete)	634,710	855,663	814,701	896,775	10.1%
Phaistos (Crete)	95,182	134,538	118,146	107,965	-8.6%
Ancient Korinthos ⁽¹⁾	191,836	196,944	183,342	198,284	8.1%
Mystras ⁽¹⁾	125,549	145,939	138,922	140,630	1.2%
Delphi	345,804	405,947	377,644	376,995	-0.2%
Other archaeological sites	4,906,415	5,464,000	4,567,090	5,382,624	17.9%
II. VISITORS WHO PAID TICKET					
	2017	2018	JANUARY-OCTOBER		change 2019/2018
			2018	2019	
Total number of visitors who paid ticket (C+D)	10,288,448	11,576,110	10,212,690	11,562,158	13.2%
C. Museums	2,831,466	3,155,269	2,887,282	3,051,396	5.7%
D. Archaeological sites	7,456,982	8,420,841	7,325,408	8,510,762	16.2%
III. VISITORS WITH FREE ADMISSION TICKETS					
	2017	2018	JANUARY-OCTOBER		change 2019/2018
			2018	2019	
Total number of visitors with free admission ticket (E+F)	6,236,109	7,027,172	6,382,782	6,579,409	3.1%
E. Museums	2,360,315	2,546,942	2,238,244	2,286,331	2.1%
F. Archaeological sites	3,875,794	4,480,230	4,144,538	4,293,078	3.6%
IV. RECEIPTS (euros)					
	2017	2018	JANUARY-OCTOBER		change 2019/2018
			2018	2019	
Total Receipts (G+H)	102,887,879	115,772,341	110,723,451	124,850,917	12.8%
G. Museums	16,175,121	18,251,493	17,059,369	21,974,665	28.8%
H. Archaeological sites	86,712,758	97,520,848	93,664,082	102,876,252	9.8%

⁽¹⁾ Flat rate ticket, valid both for the museum and the archaeological site.

⁽²⁾ From May 2017 onwards, the data for the number of tickets in the archaeological site of the Acropolis of Athens include the tickets of the Ancient Theatre of Dionysus.

⁽³⁾ The data referring to the number of tickets for the archaeological sites of the Acropolis of Lindos from November 2018 to February 2019 are provisional and are based on estimation.

EXPLANATORY NOTES

Survey on Museums and Archaeological Sites Attendance	<p>The Survey on Museums and Archaeological Sites Attendance has been producing results since 1970, The survey collects data from the Archaeological Receipts Fund (ARF) of the Ministry of Culture and Sports concerning the number of visitors and the receipts from the tickets sold in the Museums and Archaeological sites of the country.</p> <p>The corresponding data for the Acropolis Museum is available from December 2009 onwards.</p>
Legal Framework	<p>The survey is conducted since 1970 on a regular basis and it produces results on a monthly and yearly basis, in compliance with the Joint Ministerial Decision 15189/B379/73.</p>
Reference Period	<p>01/10/2019 to 30/10/2019</p>
Methodology and Definitions	<p>The Survey is conducted on a monthly basis from data mainly collected from the Archaeological Receipts Fund (ARF) of the Ministry of Culture and Sports concerning the number of visitors and the receipts from the tickets sold in the Museums and Archaeological sites of the Country. ELSTAT tabulates and present the data for the whole of the Country, by month and by year.</p> <p>Number of flat rate tickets</p> <p>From April 1999 onwards, in some museums and the nearby archaeological sites, in addition to the ordinary ticket, a new “flat rate ticket” was established, which is valid for both the museum and the nearby archaeological site, The total number of these flat rate tickets for October 2019 was 114,375.</p>
References	<p>More information on the Survey on Museums and Archaeological Sites Attendance and detailed time series are available on: http://www.statistics.gr/en/statistics/-/publication/SCI21/</p>