



**HELLENIC REPUBLIC  
HELLENIC STATISTICAL AUTHORITY**

Piraeus, 29 May 2020

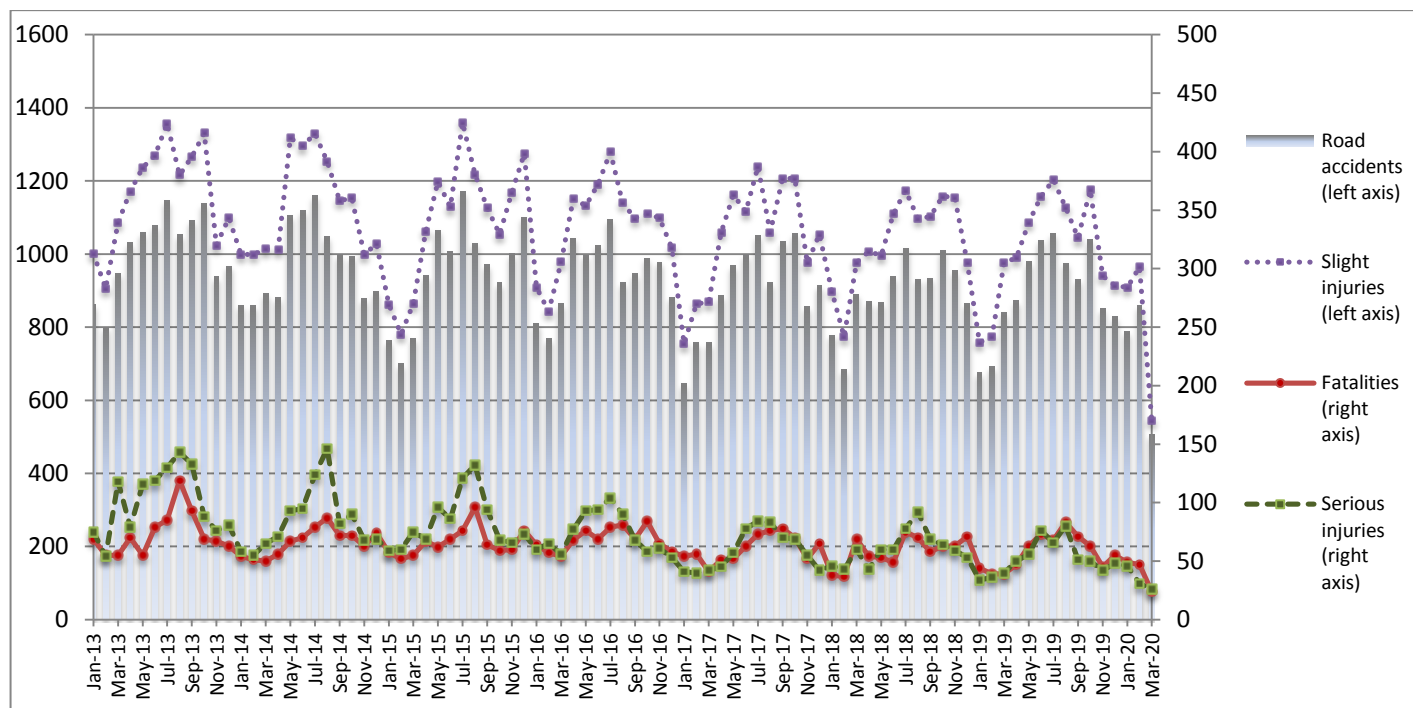
**PRESS RELEASE**

**ROAD TRAFFIC ACCIDENTS: March 2020**

The Hellenic Statistical Authority (ELSTAT) announces provisional<sup>1</sup> data on Road Traffic Accidents for March 2020. In particular, the road traffic accidents which occurred in Greece, resulting in death or injury, decreased by 39.6% in comparison with the corresponding month of 2019 (507 road accidents in March 2020, against 839 road accidents in March 2019).

The casualties of the injury-causing accidents that occurred in March 2020 were as follows: 24 deaths, 26 serious injuries and 545 slight injuries. In contrast, in March 2019 the corresponding figures were: 39 deaths, 40 serious injuries and 977 slight injuries. Therefore, road accident casualties in March 2020 decreased by 38.5% for deaths, by 35.0% for serious injuries and by 44.2% for slight injuries.

**Graph 1: Road traffic accidents and casualties,  
January 2013 - March 2020**



Provisional data for the period April 2019 – March 2020

**Information on methodological issues:**

Sectoral Statistics Division  
Transport Statistics Section  
P. Tzortzi  
Tel: +30 213 135 2187  
Fax : +30 213 135 2757  
e-mail: [p.tzortzi@statistics.gr](mailto:p.tzortzi@statistics.gr)

**Information for data provision:**

Tel: 213 135 2022, 2308, 2310  
e-mail: [data.dissem@statistics.gr](mailto:data.dissem@statistics.gr)

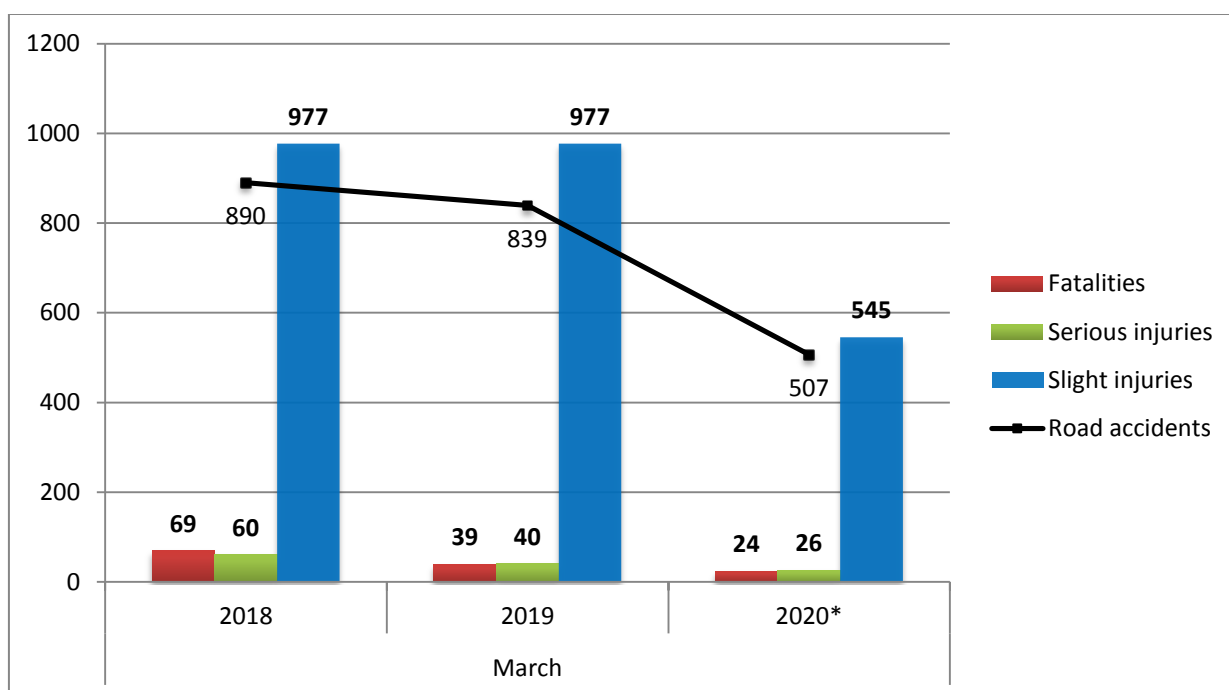
<sup>[1]</sup> Data for the reference year is provisional until the finalization of the annual data, which takes place 10 months after the end of the reference year and is published in the corresponding press release of the following year. During these 10 months the provisional data is updated on the basis of the data of the Road Accident Forms of that year which is transmitted to ELSTAT by Police Authorities (see explanatory notes).

**Table 1: Road traffic accidents and casualties, March 2018 - 2020\***

	March				
	2018	2019	2019/2018 (%)	2020*	2020*/2019 (%)
<b>Road accidents</b>	<b>890</b>	<b>839</b>	<b>-5.7</b>	<b>507</b>	<b>-39.6</b>
<b>Fatalities</b>	<b>69</b>	<b>39</b>	<b>-43.5</b>	<b>24</b>	<b>-38.5</b>
<b>Total injuries</b>	<b>1,037</b>	<b>1,017</b>	<b>-1.9</b>	<b>571</b>	<b>-43.9</b>
Serious injuries	60	40	-33.3	26	-35.0
Slight injuries	977	977	0.0	545	-44.2

\* Provisional data

**Graph 2: Road traffic accidents and casualties, March 2018 - 2020\***



\* Provisional data

**Table 2: Road traffic accidents and casualties, by region and department, March 2019 and 2020\***

Region and department	Road accidents			Fatalities			Serious injuries			Slight injuries		
	2019	2020*	%	2019	2020*	%	2019	2020*	%	2019	2020*	%
<b>Greece Total</b>	<b>839</b>	<b>507</b>	<b>-39.6</b>	<b>39</b>	<b>24</b>	<b>-38.5</b>	<b>40</b>	<b>26</b>	<b>-35.0</b>	<b>977</b>	<b>545</b>	<b>-44.2</b>
<b>Anatoliki Makedonia and Thraki (East Macedonia and Thrace)</b>	<b>24</b>	<b>14</b>	<b>-41.7</b>	<b>1</b>	<b>3</b>	<b>200.0</b>	<b>0</b>	<b>3</b>	<b>-</b>	<b>29</b>	<b>13</b>	<b>-55.2</b>
Drama	4	1	-75.0	1	0		0	1		5	1	
Evros	10	4	-60.0	0	2		0	0		13	2	
Kavala	6	3	-50.0	0	1		0	0		7	3	
Xanthi	2	4	100.0	0	0		0	2		2	5	
Rodopi	2	2	0.0	0	0		0	0		2	2	
<b>Kentriki Makedonia (Central Macedonia)</b>	<b>155</b>	<b>84</b>	<b>-45.8</b>	<b>6</b>	<b>3</b>	<b>-50.0</b>	<b>5</b>	<b>1</b>	<b>-80.0</b>	<b>184</b>	<b>99</b>	<b>-46.2</b>
Imathia	5	1	-80.0	0	0		1	0		5	4	
Thessaloniki	131	74	-43.5	4	2		1	0		155	86	
Kilkis	6	3	-50.0	0	0		1	0		7	5	
Pella	4	2	-50.0	0	0		0	0		4	2	
Pieria	3	1	-66.7	1	0		0	1		9	0	
Serres	2	1	-50.0	1	1		1	0		0	0	
Chalkidiki	4	2	-50.0	0	0		1	0		4	2	
<b>Dytiki Makedonia (West Macedonia)</b>	<b>3</b>	<b>0</b>	<b>-100.0</b>	<b>0</b>	<b>0</b>	<b>-</b>	<b>0</b>	<b>0</b>	<b>-</b>	<b>4</b>	<b>0</b>	<b>-100.0</b>
Grevena	0	0	-	0	0		0	0		0	0	
Kastoria	1	0	-100.0	0	0		0	0		1	0	
Kozani	2	0	-100.0	0	0		0	0		3	0	
Florina	0	0	-	0	0		0	0		0	0	
<b>Ipeiros (Epirus)</b>	<b>10</b>	<b>6</b>	<b>-40.0</b>	<b>1</b>	<b>0</b>	<b>-100.0</b>	<b>0</b>	<b>1</b>	<b>-</b>	<b>13</b>	<b>5</b>	<b>-61.5</b>
Arta	0	0	-	0	0		0	0		0	0	
Thesprotia	2	1	-50.0	0	0		0	0		3	1	
Ioannina	5	3	-40.0	1	0		0	1		7	2	
Preveza	3	2	-33.3	0	0		0	0		3	2	
<b>Thessalia (Thessaly)</b>	<b>18</b>	<b>12</b>	<b>-33.3</b>	<b>4</b>	<b>2</b>	<b>-50.0</b>	<b>1</b>	<b>3</b>	<b>200.0</b>	<b>21</b>	<b>8</b>	<b>-61.9</b>
Karditsa	8	5	-37.5	1	2		1	2		7	1	
Larissa	5	2	-60.0	1	0		0	0		7	3	
Magnissia	2	2	0.0	2	0		0	1		0	1	
Trikala	3	3	0.0	0	0		0	0		7	3	
<b>Ionian Nisia (Ionian Islands)</b>	<b>14</b>	<b>3</b>	<b>-78.6</b>	<b>2</b>	<b>0</b>	<b>-100.0</b>	<b>0</b>	<b>1</b>	<b>-</b>	<b>15</b>	<b>2</b>	<b>-86.7</b>
Zakynthos	7	2	-71.4	1	0		0	1		7	1	
Kerkyra	2	1	-50.0	1	0		0	0		1	1	
Kefallinia	2	0	-100.0	0	0		0	0		4	0	
Lefkada	3	0	-100.0	0	0		0	0		3	0	

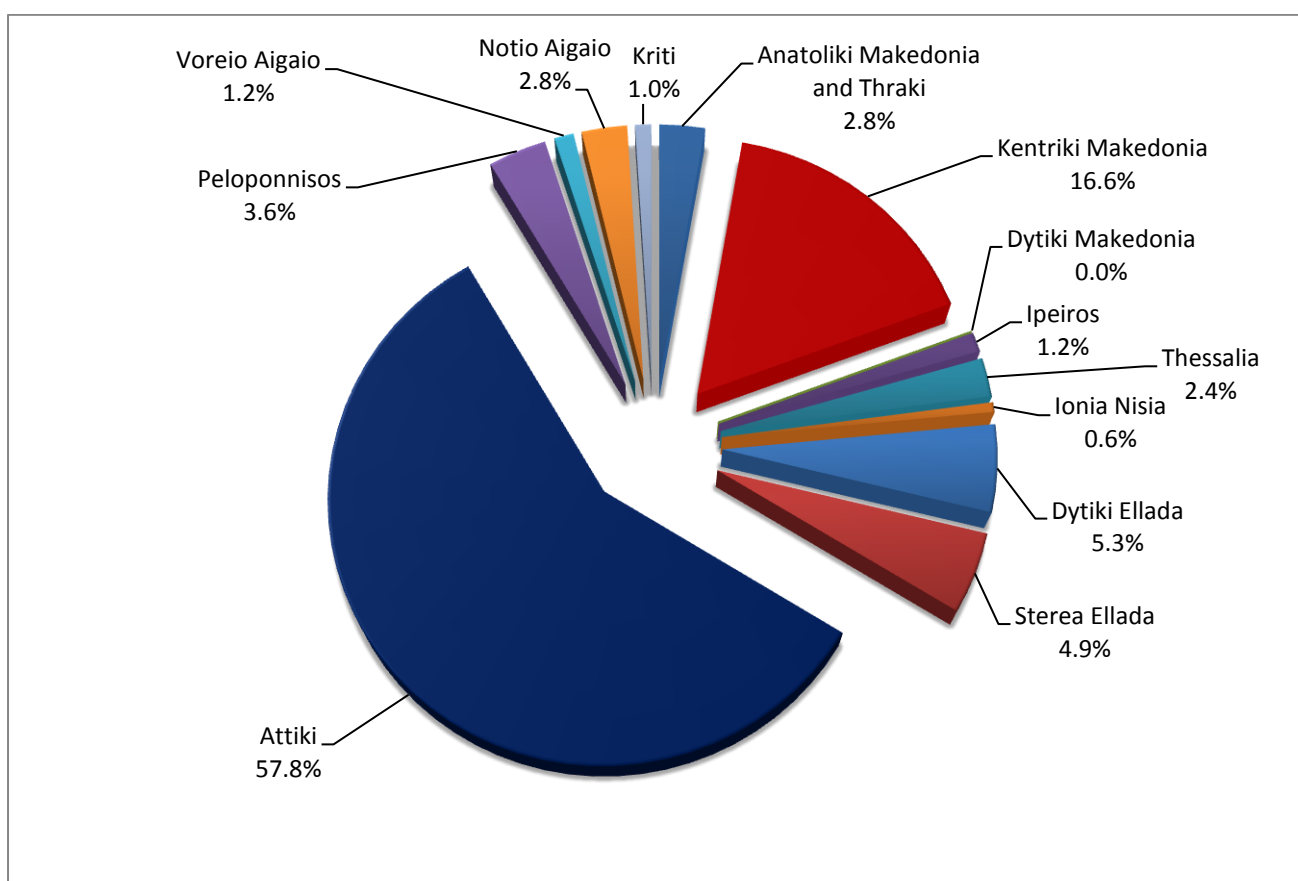
\* Provisional data

**Table 2: Road traffic accidents and casualties, by region and department, March 2019 and 2020\* (Continued)**

Region and department	Road accidents			Fatalities			Serious injuries			Slight injuries		
	2019	2020*	%	2019	2020*	%	2019	2020*	%	2019	2020*	%
<b>Dytiki Ellada (West Greece)</b>	<b>30</b>	<b>27</b>	<b>-10.0</b>	<b>1</b>	<b>3</b>	<b>200.0</b>	<b>3</b>	<b>2</b>	<b>-33.3</b>	<b>32</b>	<b>28</b>	<b>-12.5</b>
Etolia & Akarnania	11	9	-18.2	1	1		1	0		11	10	
Achaia	13	12	-7.7	0	0		1	2		14	10	
Ilia	6	6	0.0	0	2		1	0		7	8	
<b>Sterea Ellada</b>	<b>30</b>	<b>25</b>	<b>-16.7</b>	<b>2</b>	<b>3</b>	<b>50.0</b>	<b>4</b>	<b>1</b>	<b>-75.0</b>	<b>31</b>	<b>31</b>	<b>0.0</b>
Viotia	2	7	250.0	0	0		0	1		3	8	
Evia	16	12	-25.0	2	3		1	0		14	13	
Evrytania	1	1	0.0	0	0		0	0		1	1	
Fthiotida	7	5	-28.6	0	0		3	0		7	9	
Fokida	4	0	-100.0	0	0		0	0		6	0	
<b>Attiki (Attica)</b>	<b>467</b>	<b>293</b>	<b>-37.3</b>	<b>11</b>	<b>7</b>	<b>-36.4</b>	<b>13</b>	<b>11</b>	<b>-15.4</b>	<b>556</b>	<b>318</b>	<b>-42.8</b>
<b>Peloponnisos (Peloponnese)</b>	<b>38</b>	<b>18</b>	<b>-52.6</b>	<b>4</b>	<b>3</b>	<b>-25.0</b>	<b>4</b>	<b>1</b>	<b>-75.0</b>	<b>47</b>	<b>15</b>	<b>-68.1</b>
Argolida	3	4	33.3	0	2		0	0		4	2	
Arkadia	7	2	-71.4	2	0		1	0		8	3	
Korinthia	16	8	-50.0	1	1		3	0		17	7	
Lakonia	2	2	0.0	1	0		0	1		1	1	
Messinia	10	2	-80.0	0	0		0	0		17	2	
<b>Voreio Aigaio (North Aegean)</b>	<b>24</b>	<b>6</b>	<b>-75.0</b>	<b>3</b>	<b>0</b>	<b>-100.0</b>	<b>3</b>	<b>0</b>	<b>-100.0</b>	<b>25</b>	<b>8</b>	<b>-68.0</b>
Lesvos	18	5	-72.2	2	0		2	0		20	6	
Samos	3	1	-66.7	0	0		0	0		3	2	
Chios	3	0	-100.0	1	0		1	0		2	0	
<b>Notio Aigaio (South Aegean)</b>	<b>12</b>	<b>14</b>	<b>16.7</b>	<b>1</b>	<b>0</b>	<b>-100.0</b>	<b>3</b>	<b>2</b>	<b>-33.3</b>	<b>8</b>	<b>13</b>	<b>62.5</b>
Dodekanissos	9	11	22.2	1	0		3	0		5	11	
Kyklades	3	3	0.0	0	0		0	2		3	2	
<b>Kriti (Crete)</b>	<b>14</b>	<b>5</b>	<b>-64.3</b>	<b>3</b>	<b>0</b>	<b>-100.0</b>	<b>4</b>	<b>0</b>	<b>-100.0</b>	<b>12</b>	<b>5</b>	<b>-58.3</b>
Iraklio	8	3	-62.5	1	0		2	0		7	3	
Lassithi	3	0	-100.0	1	0		1	0		2	0	
Rethymno	2	0	-100.0	0	0		1	0		3	0	
Chania	1	2	100.0	1	0		0	0		0	2	

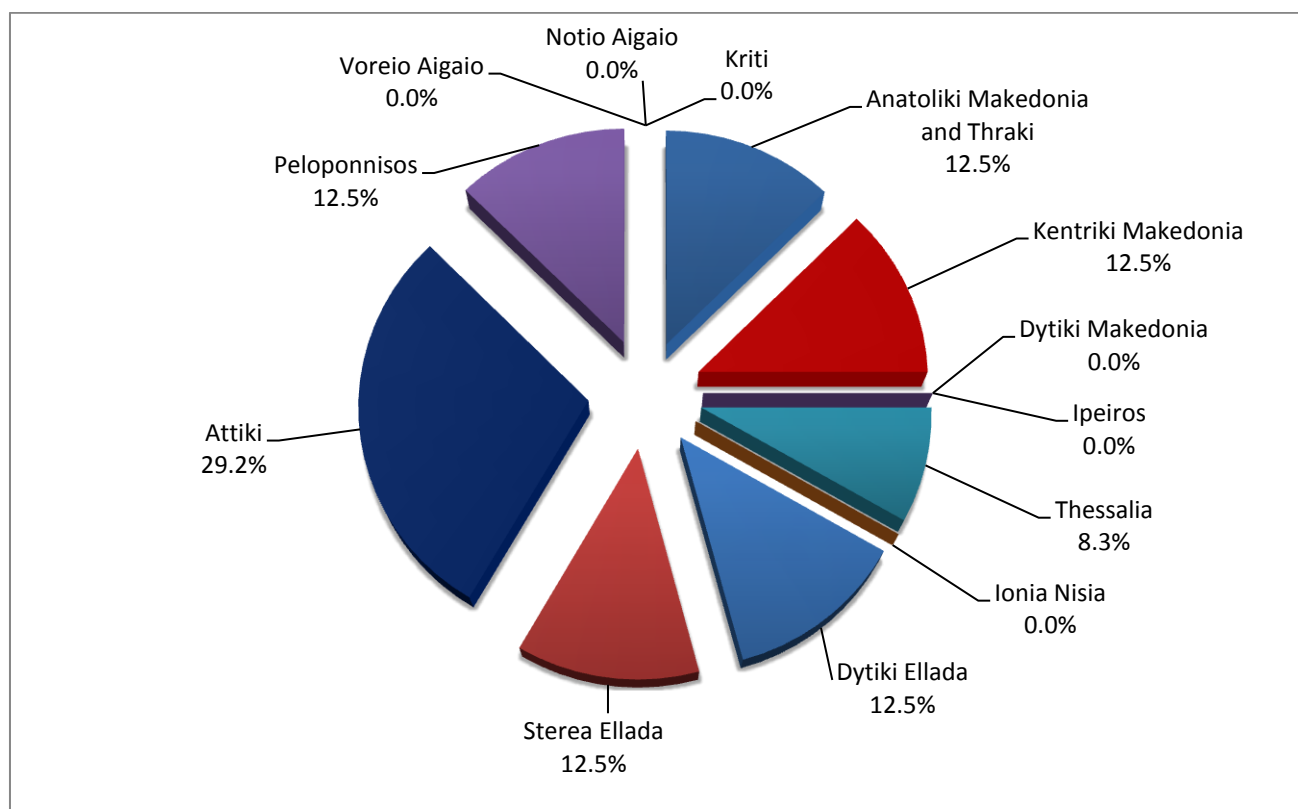
\* Provisional data

**Graph 3: Road traffic accidents by region, March 2020 \***



\* Provisional data

**Graph 4: Fatalities by region, March 2020 \***



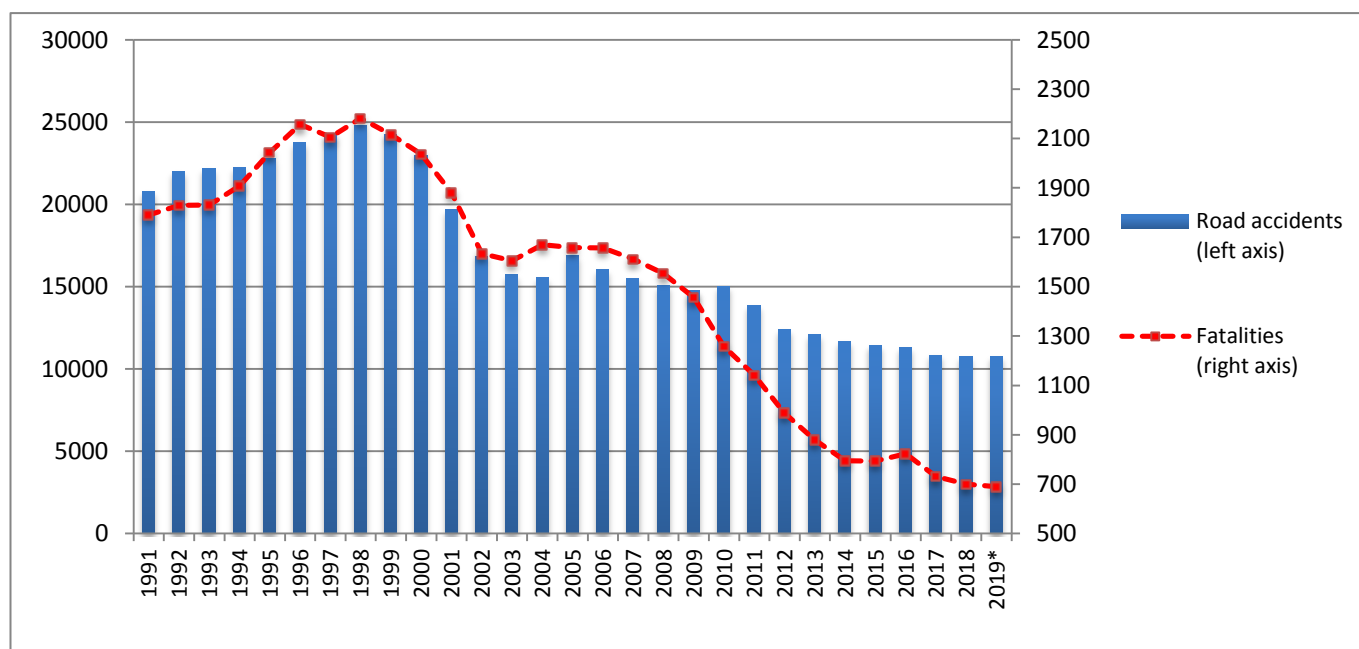
\* Provisional data

**Table 3: Road traffic accidents and casualties for the period January - March 2018, 2019 and 2020\***

	2018		2019		2020 *
	January - March	Total year	January - March	Total year*	January - March
<b>Road Accidents</b>	2,352	<b>10,737</b>	2,208	<b>10,777</b>	2,153
<b>Annual Change (%)</b>			-6.1	0.4	-2.5
<b>Fatalities</b>	144	<b>700</b>	122	<b>690</b>	120
<b>Annual Change (%)</b>			-15.3	-1.4	-1.6
<b>Serious injuries</b>	149	<b>727</b>	110	<b>629</b>	103
<b>Annual Change (%)</b>			-26.2	-13.5	-6.4
<b>Slight injuries</b>	2,648	<b>12,422</b>	2,509	<b>12,146</b>	2,419
<b>Annual Change (%)</b>			-5.2	-2.2	-3.6

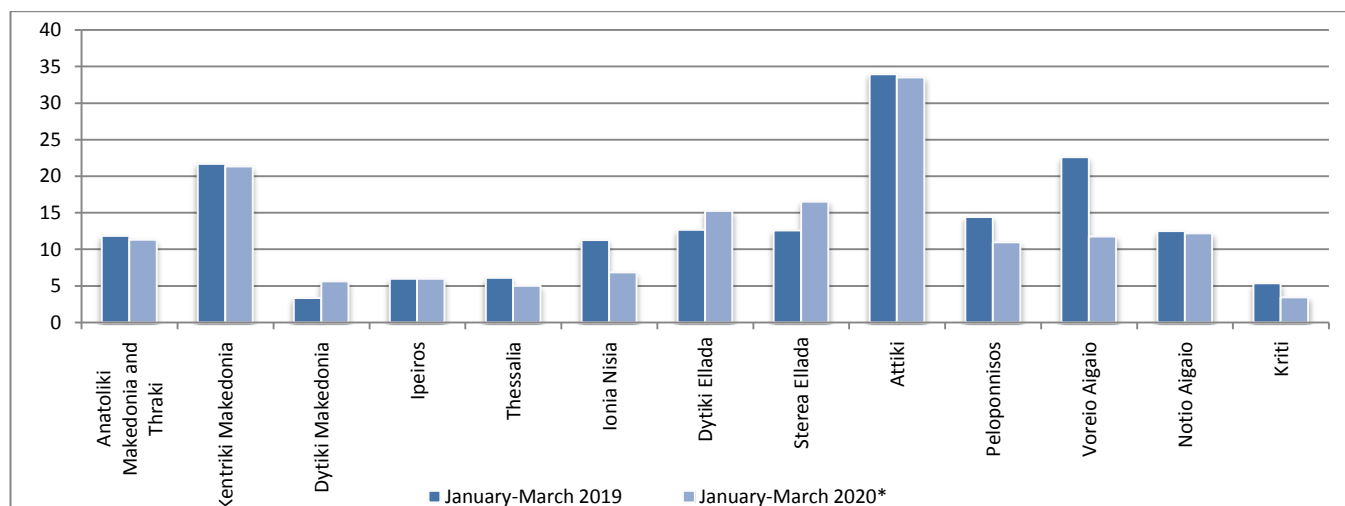
\* Provisional data

**Graph 5: Total road traffic accidents and fatalities, 1991-2019\***



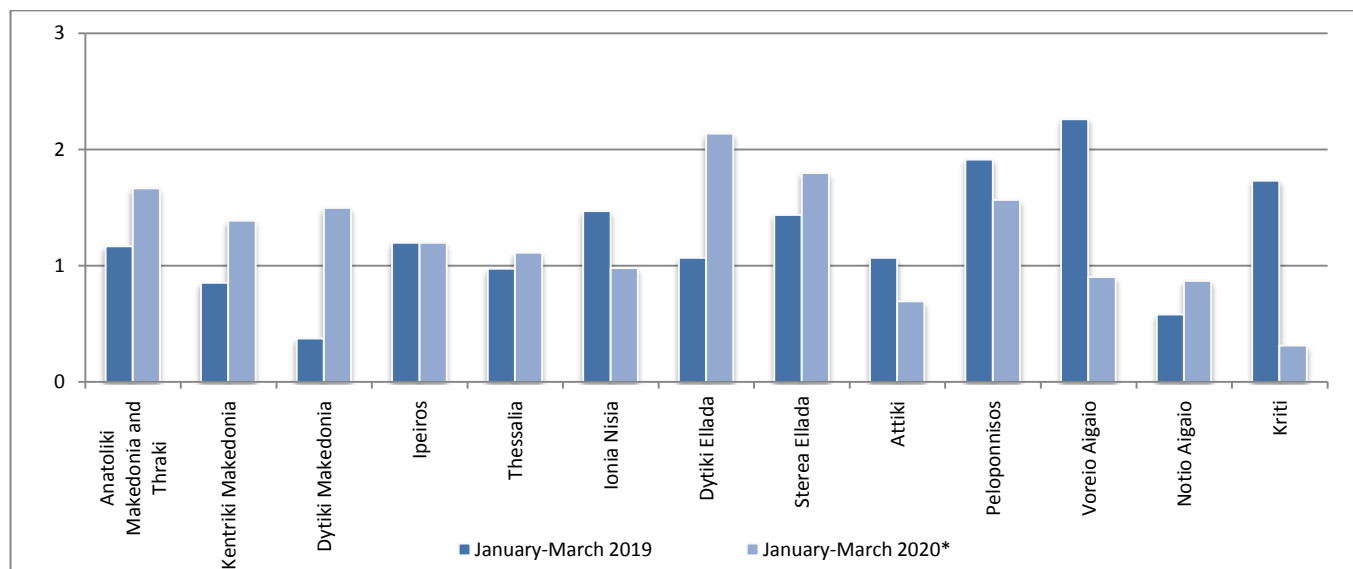
\*Provisional data for the period April 2019 – December 2019

**Graph 6: Road traffic accidents per 100,000 inhabitants**

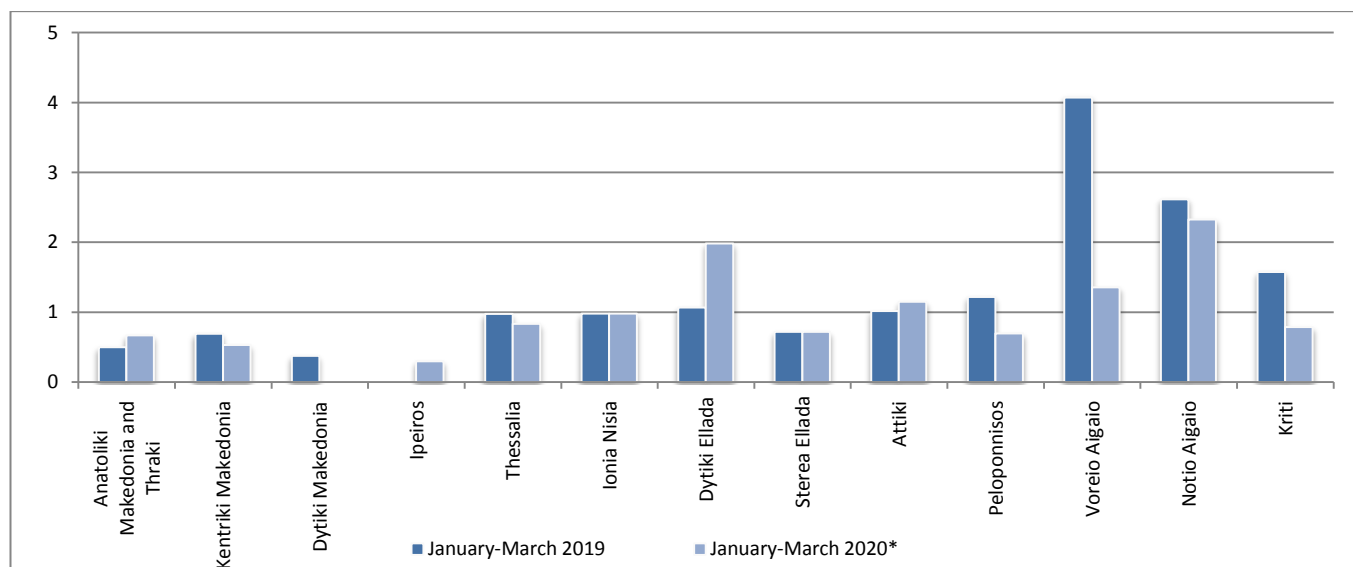


\* Provisional data

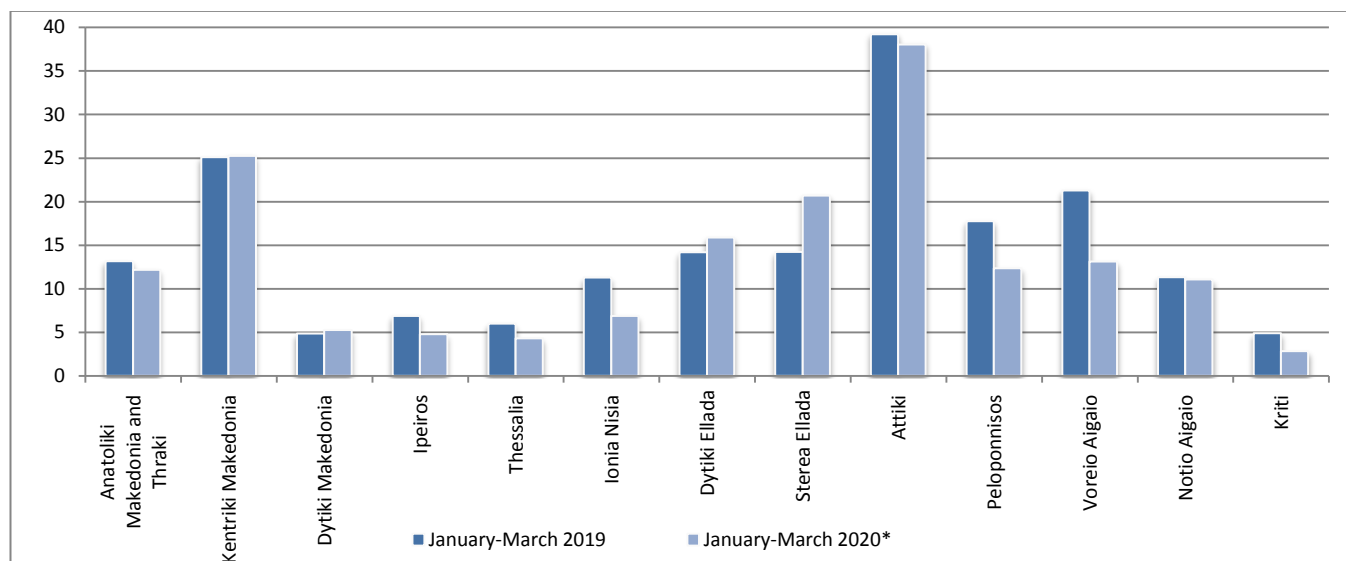
**Graph 7: Fatalities per 100,000 inhabitants**



**Graph 8: Serious injuries per 100,000 inhabitants**



**Graph 9: Slight injuries per 100,000 inhabitants**



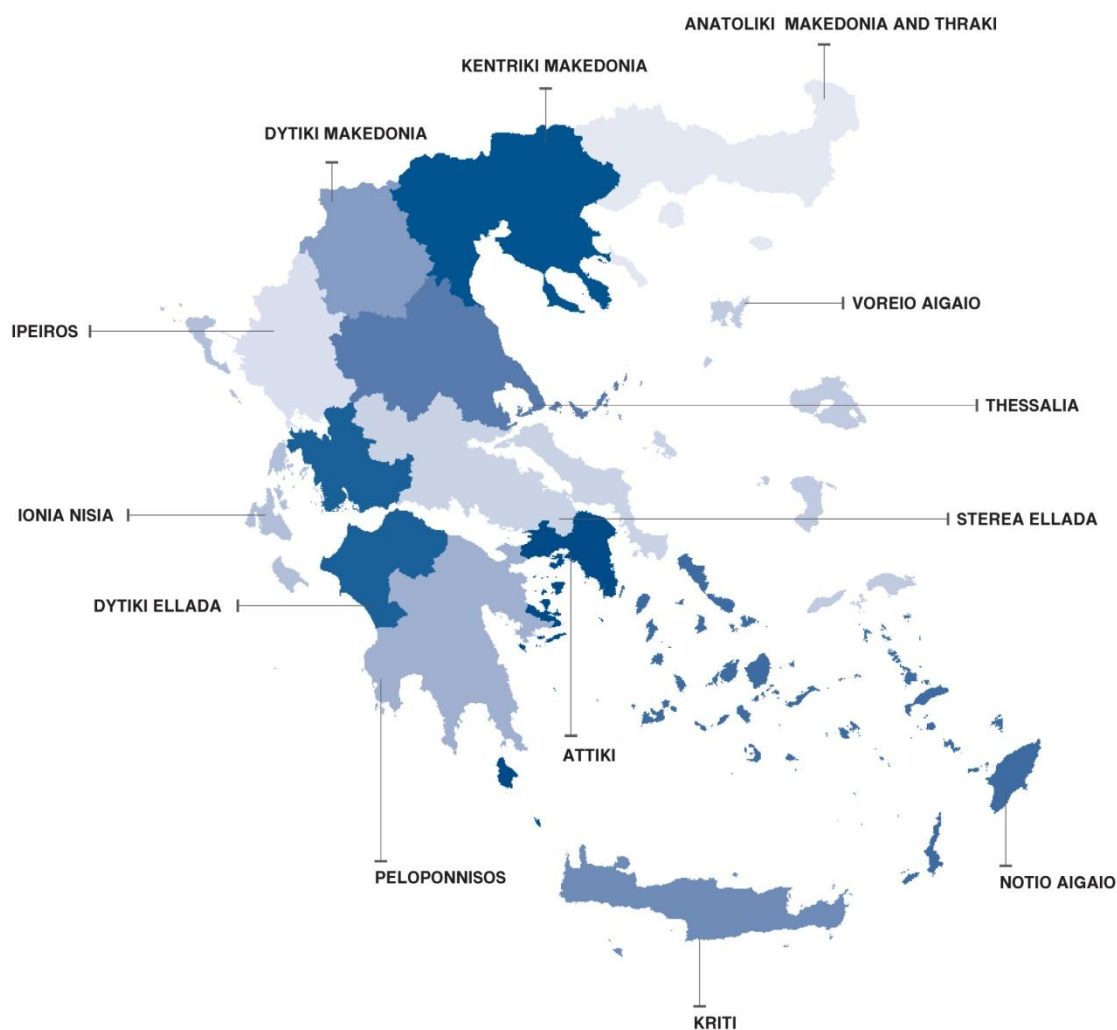
\* Provisional data

## EXPLANATORY NOTES

**Survey on Road Traffic Accidents** The Survey on Road Traffic Accidents is conducted on a monthly basis and it records, for each region (see map) and department of Greece and for each month separately, the number of accidents resulting in death or injury, as well as the number of persons injured by categories (drivers, passengers, pedestrians).

On a yearly basis, road traffic accidents are further analyzed. The competent agencies for filling in/collecting the forms on road accidents are the local Police Authorities and the local Port Authorities of Greece.

The lower level of analysis for the place where an injury road accident occurred is the settlement. Data are collected on a monthly basis. The main variables are the following: place of accident, kind of road, casualties, conditions of road surface and type of road.



**Legal basis** The Survey on Road Traffic Accidents is governed by Council Decision 93/704 of the European Community.

**Reference period** Monthly.

**Availability of data** Provisional data are available 2 months after the reference month.  
Final data are available 10 months after the reference year.

**National Road accident** (injury accident): Any accident involving at least one road motor vehicle in motion



**definitions** on a public road or square to which the public has access (excluding yards, industrial sites or vehicle depot of public transport enterprises), resulting in at least one injured or killed person. Accidents with only material damages are not included.

**Fatality (Death):** Any person killed immediately or dying within 30 days as a result of an injury accident (This national definition applies since 01.01.1996)

**Person injured:** Any person who sustained an injury as result of an injury accident, and who normally needs medical treatment.

**Serious injury:** Any person who sustained an injury as result of an injury accident, such as brain damages, mutilation, multiple injuries, which may result in lack of awareness or which are life-threatening.

**Slight injury:** Any person injured who sustained minor and not life-threatening injuries.

**Vehicle:** Include motor vehicles, trolleybuses, motorcycles, bicycles, motorbikes, agricultural and road making machines, animal and hand-drawn vehicles. Railway vehicles are excluded, unless the road accident involves at least one of the aforementioned types of vehicles and therefore, railway vehicles are considered vehicles.

**Methodology** The forms of the survey are filled in by the local Police Authorities and the local Port Authorities as well.

**References** More information about Road Traffic Accidents is available on ELSTAT's website and more specifically at the link: <https://www.statistics.gr/en/statistics/-/publication/SDT03/->.