

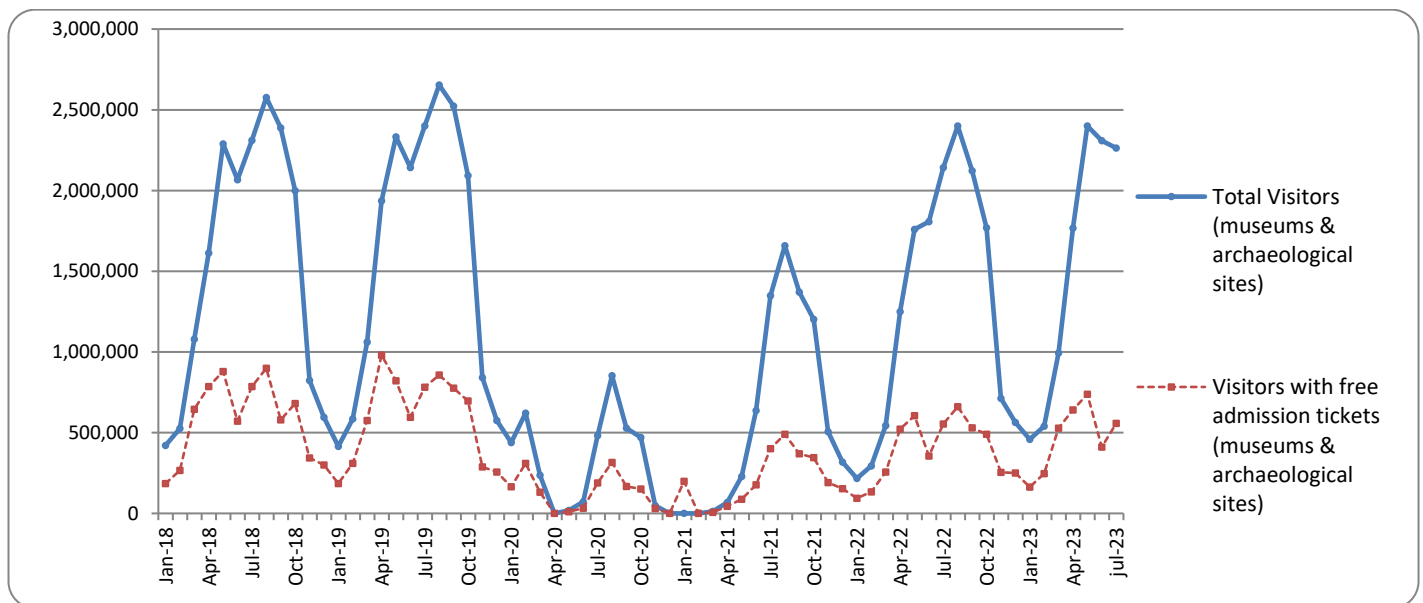


## SURVEY ON MUSEUMS AND ARCHAEOLOGICAL SITES ATTENDANCE JULY 2023

The Hellenic Statistical Authority (ELSTAT) announces the results of the *Survey on Museums and Archaeological Sites Attendance* for July 2023. More specifically:

- During July 2023 compared with the corresponding month of 2022, museums recorded an 10.8% increase in the number of visitors and a 7.3% increase in the number of free admission visitors, as well as a 37.7% increase in their receipts (Table 1).
- As regards archaeological sites, in July 2023 compared with the corresponding month of 2022, an increase of 3.7% was recorded in the number of visitors, a decrease of 2.2% in the number of free admission visitors and an increase of 5.9% in the corresponding receipts (Table 1).
- During the seven-month period from January to July 2023, compared to the corresponding period of 2022, an increase of 37.8% was recorded in the number of visitors of Museums, of 36.9% in the number of free admission visitors and of 69.4% in the relevant receipts (Table 2).
- As regards Archaeological sites, during the seven-month period from January to July 2023, compared to the corresponding period of 2022, an increase of 32.2% was recorded in the number of visitors, while an increase of 26.7% was observed in the number of free admission visitors and of 35.8% in the relevant receipts (Table 2).

**Graph 1: Visitors of Museums and Archaeological sites (January 2018 –July 2023)**



**Information on methodological issues:**

Sectoral Statistics Division  
Tourism and Culture Statistics Section  
Head of Section: Eleni Papadopoulou  
Tel: +30 213 135 2168  
e-mail: [e.papadopoulou@statistics.gr](mailto:e.papadopoulou@statistics.gr)

**Information for data provision:**

Tel. +30 213 135 2022, 2308, 2310  
e-mail: [data.dissem@statistics.gr](mailto:data.dissem@statistics.gr)

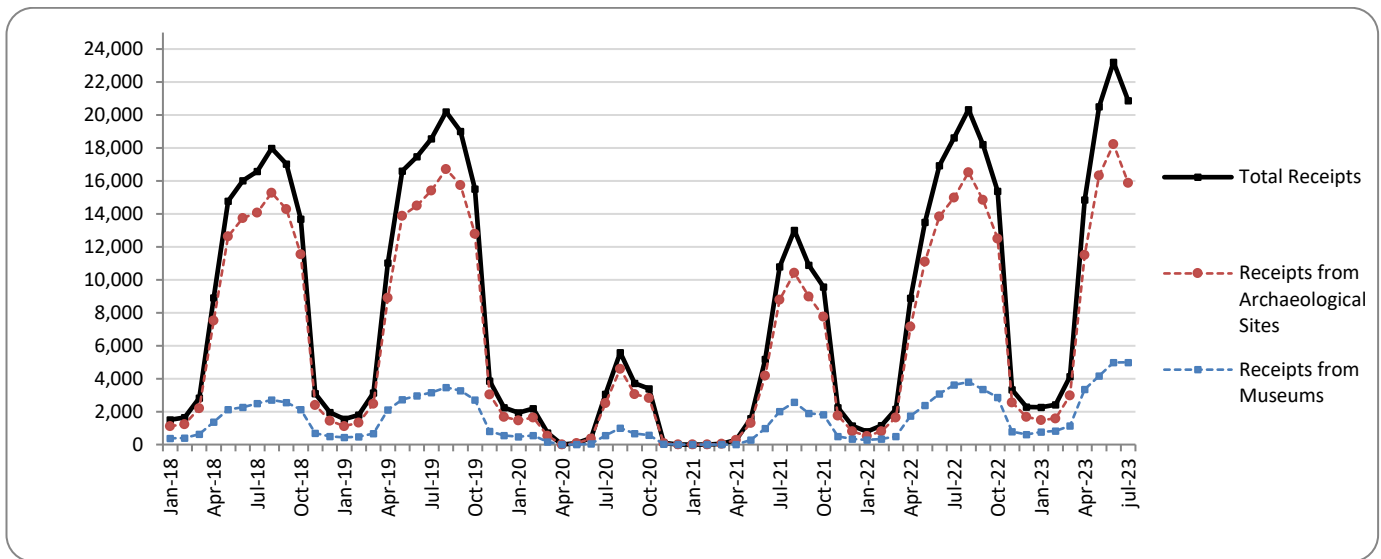
**TABLE 1: VISITORS OF MUSEUMS AND ARCHAEOLOGICAL SITES - TOTAL RECEIPTS  
(JULY 2022 & JULY 2023)**

<b>I. NUMBER OF VISITORS</b>			
Museums and Archaeological sites	2022	2023	Change 2023/2022
<b>Total number of visitors (A+B)</b>	<b>2,141,792</b>	<b>2,264,097</b>	<b>5.7%</b>
<b>A. Museums (C+E)</b>	<b>610,160</b>	<b>675,815</b>	<b>10.8%</b>
Acropolis Museum	192,900	221,039	14.6%
National Archaeological	60,274	72,624	20.5%
Ancient Olympia	10,253	11,253	9.8%
Palace of the Grand Master (Rhodes)	45,517	48,551	6.7%
Herakleion Archaeological (Crete)	41,616	45,771	10.0%
White Tower	23,332	30,055	28.8%
Delphi	16,953	18,614	9.8%
Other museums	219,315	227,908	3.9%
<b>B. Archaeological Sites (D+F)</b>	<b>1,531,632</b>	<b>1,588,282</b>	<b>3.7%</b>
Epidavros <sup>(1)</sup>	50,383	51,228	1.7%
The Acropolis of Mycenae & Atreus' Treasure	44,111	44,816	1.6%
The Acropolis of Athens	409,267	449,494	9.8%
Sounio	38,830	38,710	-0.3%
The Acropolis of Lindos	102,556	89,046	-13.2%
Royal Tombs of Vergina	12,406	13,329	7.4%
Ancient Olympia	47,800	66,477	39.1%
Knossos (Crete)	148,917	152,989	2.7%
Phaistos (Crete)	11,304	10,399	-8.0%
Ancient Korinthos <sup>(1)</sup>	17,438	18,661	7.0%
Mystras <sup>(1)</sup>	17,516	14,676	-16.2%
Delphi	39,995	45,397	13.5%
Other archaeological sites	591,109	593,060	0.3%
<b>II. VISITORS WHO PAID TICKET</b>			
	2022	2023	Change 2023/2022
<b>Total number of visitors who paid ticket (C+D)</b>	<b>1,588,747</b>	<b>1,705,544</b>	<b>7.4%</b>
C. Museums	424,462	476,542	12.3%
D. Archaeological sites	1,164,285	1,229,002	5.6%
<b>III. VISITORS WITH FREE ADMISSION TICKETS</b>			
	2022	2023	Change 2023/2022
<b>Total number of visitors with free admission ticket (E+F)</b>	<b>553,045</b>	<b>558,553</b>	<b>1.0%</b>
E. Museums	185,698	199,273	7.3%
F. Archaeological sites	367,347	359,280	-2.2%
<b>IV. RECEIPTS (euros)</b>			
	2022	2023	Change 2023/2022
<b>Total Receipts (G+H)</b>	<b>18,614,117</b>	<b>20,870,911</b>	<b>12.1%</b>
G. Museums	3,624,075	4,990,628	37.7%
H. Archaeological sites	14,990,042	15,880,283	5.9%

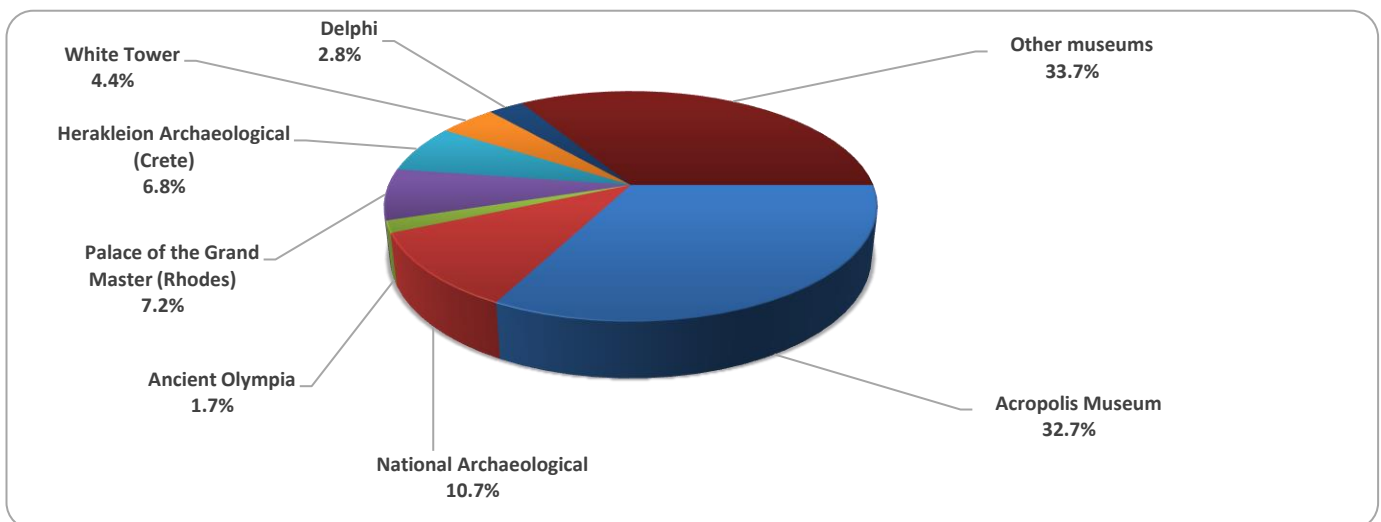
<sup>(1)</sup> Flat rate ticket, valid both for the museum and the archaeological site.

The following graphs depict the evolution of the receipts of Museums and Archaeological Sites (Graph 2), as well as the number of visitors by Museum (Graph 3) and by Archaeological Site (Graph 4).

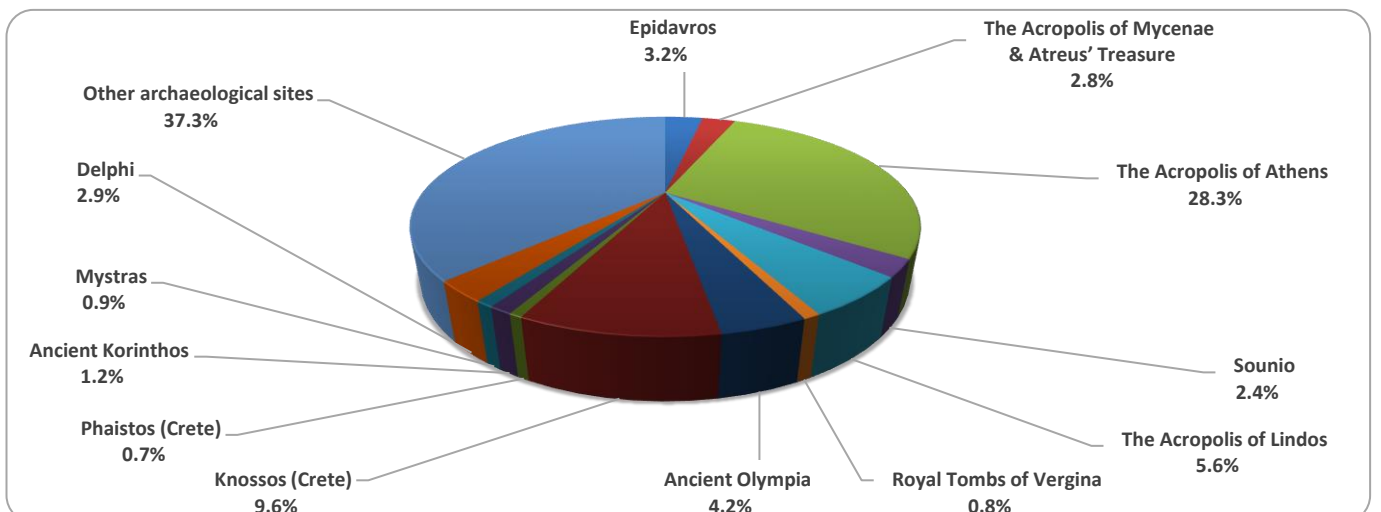
**Graph 2: Receipts from Museums and Archaeological Sites (January 2018 – July 2023)**  
(in thousand euro)



**Graph 3: Percentage distribution of visitors by Museum, July 2023**



**Graph 4: Percentage distribution of visitors by Archaeological site, July 2023**



**TABLE 2: VISITORS OF MUSEUMS AND ARCHAEOLOGICAL SITES - TOTAL RECEIPTS  
(2021, 2022, JANUARY - JULY 2022, 2023)**

<b>I. VISITORS</b>					
Museums and Archaeological sites	2021 <sup>(2)</sup>	2022	JANUARY-JULY		change
			2022	2023	2023/2022
<b>Total number of visitors (A+B)</b>	<b>7,357,026</b>	<b>15,583,552</b>	<b>8,013,362</b>	<b>10,730,906</b>	<b>33.9%</b>
<b>A. Museums (C+E)</b>	<b>2,047,481</b>	<b>4,636,901</b>	<b>2,423,764</b>	<b>3,340,965</b>	<b>37.8%</b>
Acropolis Museum	547,908	1,397,353	760,851	1,142,675	50.2%
National Archaeological	189,208	474,821	234,547	368,703	57.2%
Ancient Olympia	34,367	85,179	51,657	49,368	-4.4%
Palace of the Grand Master (Rhodes)	142,530	263,521	127,345	174,279	36.9%
Herakleion Archaeological (Crete)	127,574	249,715	117,937	154,977	31.4%
White Tower	77,983	193,916	92,574	134,650	45.5%
Delphi	58,102	151,512	81,078	129,433	59.6%
Other museums	869,809	1,820,884	957,775	1,186,880	23.9%
<b>B. Archaeological Sites (D+F)</b>	<b>5,309,545</b>	<b>10,946,651</b>	<b>5,589,598</b>	<b>7,389,941</b>	<b>32.2%</b>
Epidavros <sup>(1)</sup>	182,118	393,077	208,502	311,295	49.3%
The Acropolis of Mycenae & Atreus' Treasure	156,227	372,448	199,813	307,669	54.0%
The Acropolis of Athens	1,219,717	3,019,841	1,566,773	2,228,438	42.2%
Sounio	171,348	314,506	176,527	226,237	28.2%
The Acropolis of Lindos	349,418	596,331	291,293	326,072	11.9%
Royal Tombs of Vergina	56,790	168,444	88,528	124,425	40.5%
Ancient Olympia	143,549	338,365	164,004	260,797	59.0%
Knossos (Crete)	445,160	831,320	408,988	495,080	21.1%
Phaistos (Crete)	48,599	74,817	35,035	40,926	16.8%
Ancient Korinthos <sup>(1)</sup>	59,271	153,616	78,501	115,211	46.8%
Mystras <sup>(1)</sup>	78,762	139,512	74,527	83,635	12.2%
Delphi	146,061	332,870	167,779	281,178	67.6%
Other archaeological sites	2,252,525	4,211,504	2,129,328	2,588,978	21.6%
<b>II. VISITORS WHO PAID TICKET</b>					
	2021 <sup>(2)</sup>	2022	JANUARY-JULY		change
			2022	2023	2023/2022
<b>Total number of visitors who paid ticket (C+D)</b>	<b>5,090,418</b>	<b>10,877,516</b>	<b>5,493,516</b>	<b>7,443,421</b>	<b>35.5%</b>
C. Museums	1,289,896	2,883,216	1,489,623	2,062,294	38.4%
D. Archaeological sites	3,800,522	7,994,300	4,003,893	5,381,127	34.4%
<b>III. VISITORS WITH FREE ADMISSION TICKETS</b>					
	2021 <sup>(2)</sup>	2022	JANUARY-JULY		change
			2022	2023	2023/2022
<b>Total number of visitors with free admission ticket (E+F)</b>	<b>2,266,608</b>	<b>4,706,036</b>	<b>2,519,846</b>	<b>3,287,485</b>	<b>30.5%</b>
E. Museums	757,585	1,753,685	934,141	1,278,671	36.9%
F. Archaeological sites	1,509,023	2,952,351	1,585,705	2,008,814	26.7%
<b>IV. RECEIPTS (euros)</b>					
	2021 <sup>(2)</sup>	2022	JANUARY-JULY		change
			2022	2023	2023/2022
<b>Total Receipts (G+H)</b>	<b>54,735,194</b>	<b>121,535,113</b>	<b>62,002,611</b>	<b>88,220,327</b>	<b>42.3%</b>
G. Museums	10,385,644	23,361,465	11,939,217	20,223,881	69.4%
H. Archaeological sites	44,349,550	98,173,648	50,063,394	67,996,446	35.8%

<sup>(1)</sup> Flat rate ticket, valid both for the museum and the archaeological site.

<sup>(2)</sup> The operation of museums was suspended gradually from November 1<sup>st</sup> 2020 until May 13<sup>th</sup> 2021. The operation of archaeological sites was suspended from November 7<sup>th</sup> 2020 until March 21<sup>st</sup> 2021, in the framework of the preventative measures against the Covid-19 pandemic.

## EXPLANATORY NOTES

<b>Survey on Museums and Archaeological Sites Attendance</b>	<p>The Survey on Museums and Archaeological Sites Attendance has been producing results since 1970. The survey collects data from the Hellenic Organization of Cultural Resources Development (HOCRED), supervised by the Ministry of Culture and Sports, on the number of visitors and the receipts from the tickets sold in the Museums and Archaeological sites of the country. The corresponding data for the Acropolis Museum is available from December 2009 onwards.</p>
<b>Legal Framework</b>	<p>The survey is conducted since 1970 on a regular basis and it produces results on a monthly and yearly basis, in compliance with the Joint Ministerial Decision 15189/B379/73.</p>
<b>Reference Period</b>	<p>1/7/2023 - 31/7/2023</p>
<b>Methodology and Definitions</b>	<p>The survey is conducted on a monthly basis from data mainly collected from the Hellenic Organization of Cultural Resources Development (HOCRED), supervised by the Ministry of Culture and Sports, on the number of visitors and the receipts from the tickets sold in the Museums and Archaeological sites of the Country. ELSTAT tabulates and presents the data for the whole of the Country, by month and by year.</p> <p><b>Number of flat rate tickets:</b></p> <p>From April 1999 onwards, in some museums and the nearby archaeological sites, in addition to the ordinary ticket, a new “flat rate ticket” was established, which is valid for both the museum and the nearby archaeological site. The total number of these flat rate tickets for <b>July 2023</b> was <b>146,652</b>.</p>
<b>References</b>	<p>More information on the Survey on Museums and Archaeological Sites Attendance and detailed time series are available on: <a href="http://www.statistics.gr/en/statistics/-/publication/SCI21/">http://www.statistics.gr/en/statistics/-/publication/SCI21/</a></p>