



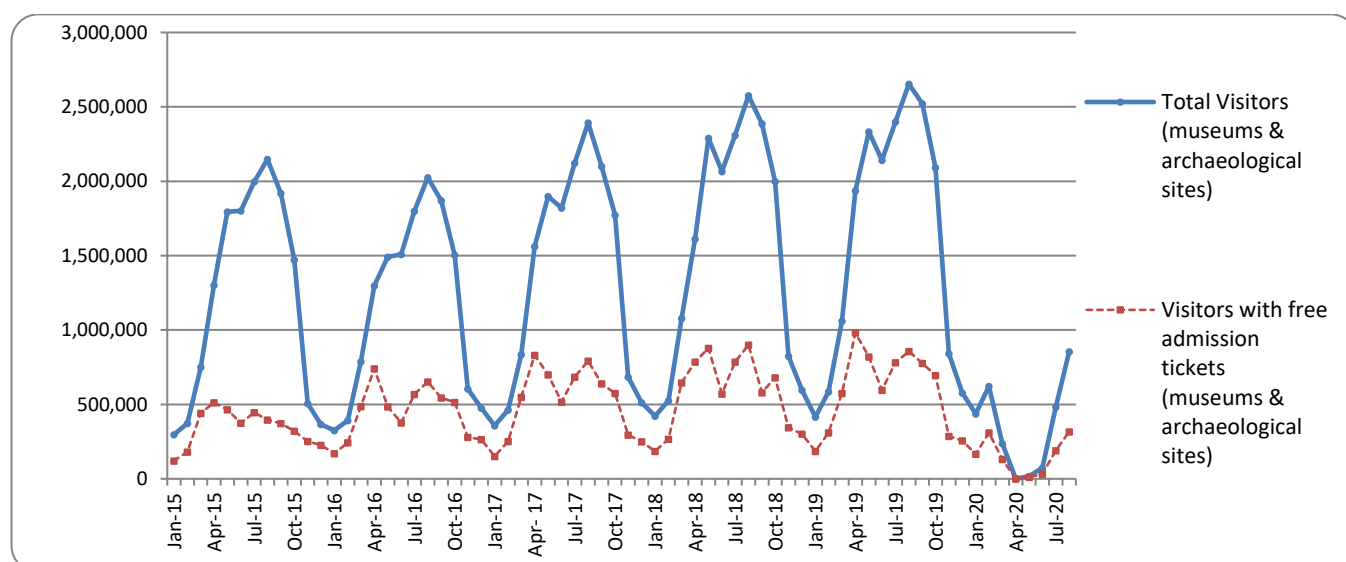
PRESS RELEASE

SURVEY ON MUSEUMS AND ARCHAEOLOGICAL SITES ATTENDANCE AUGUST 2020

The Hellenic Statistical Authority (ELSTAT) announces the results of the *Survey on Museums and Archaeological Sites Attendance* for August 2020. More specifically:

- In August 2020, compared with August 2019, the number of visitors at Museums recorded a decrease of 73.4%, while a decrease of 73.2% was observed in the number of free admission visitors and a decrease of 71.3% in the corresponding receipts (Table 1).
- In August 2020 compared with the corresponding month of 2019, the number of visitors at Archaeological sites recorded a decrease of 65.7%, while a decrease of 58.5% was observed in the number of free admission visitors and a 72.6% decrease in the corresponding receipts (Table 1).
- During the eight-month period from January to August 2020 compared to the corresponding period of 2019, a decrease of 79.1% was observed in the number of visitors of Museums, while a decrease of 77.7% was recorded in the number of free admission visitors and an 82.5% decrease in the relevant receipts, taking into consideration that the operation of Museums had been suspended from March 14th until June 15th 2020 (Table 2).
- As regards Archaeological sites, during the eight-month period from January to August 2020 compared to the corresponding period of 2019, a decrease of 80.2% was recorded in the number of visitors, while a 77.2% decrease was observed in the number of free admission visitors and a 85.0% decrease in the relevant receipts, taking into consideration that the operation of Archaeological sites had been suspended from March 14th to May 17th 2020 (Table 2).

Graph 1: Visitors of Museums and Archaeological sites (January 2015 – August 2020)



Information on methodological issues:

Sectoral Statistics Division
Tourism and Cultural Statistics Section
Head of the Section: Asimina Katri
Tel: +30 213 135 2168
Fax: +30 210 482 2669
e-mail: a.katri@statistics.gr

Information for data provision:

Tel. +30 213 135 2022, 2308, 2310
e-mail: data.dissem@statistics.gr

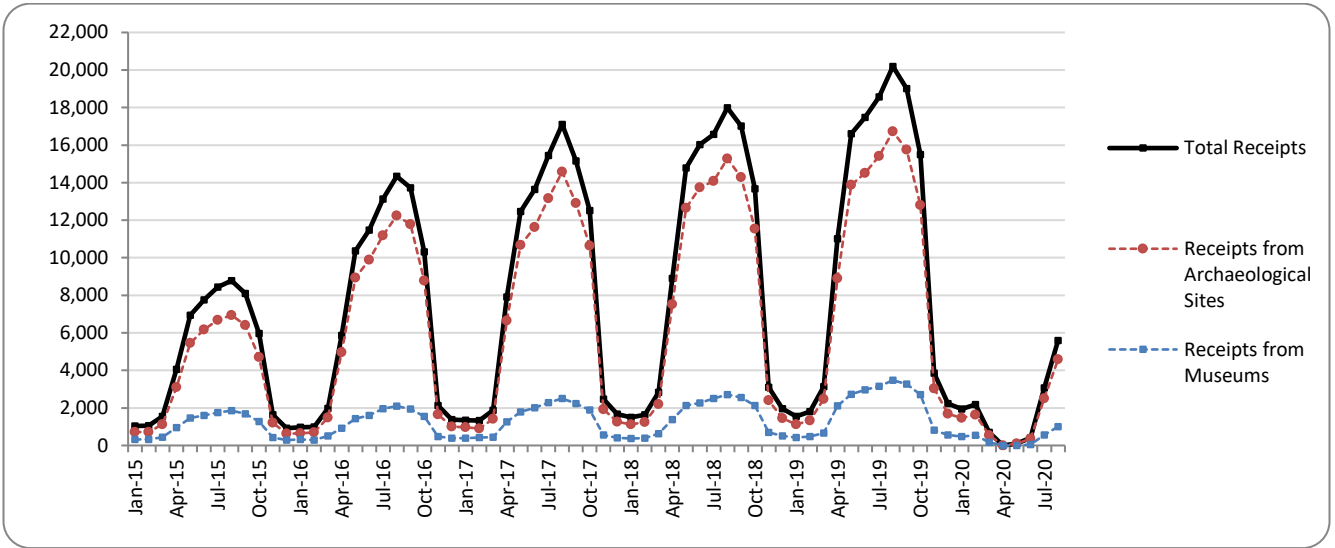
**TABLE 1: VISITORS OF MUSEUMS AND ARCHAEOLOGICAL SITES - TOTAL RECEIPTS
(AUGUST 2019 & AUGUST 2020)**

I. NUMBER OF VISITORS			
Museums and Archaeological sites	2019	2020	Change 2020/2019
Total number of visitors (A+B)	2,653,909	854,224	-67.8%
A. Museums (C+E)	730,089	194,448	-73.4%
Acropolis Museum	201,991	46,481	-77.0%
National Archaeological	67,371	9,956	-85.2%
Ancient Olympia	16,674	5,351	-67.9%
Palace of the Grand Master (Rhodes)	48,407	16,195	-66.5%
Herakleion Archaeological (Crete)	114,661	16,248	-85.8%
White Tower	33,996	7,514	-77.9%
Delphi	26,300	6,880	-73.8%
Other museums	220,689	85,823	-61.1%
B. Archaeological Sites (D+F)	1,923,820	659,776	-65.7%
Epidavros ⁽¹⁾	70,230	25,571	-63.6%
The Acropolis of Mycenae & Atreus' Treasure	58,778	17,912	-69.5%
The Acropolis of Athens	451,686	98,100	-78.3%
Sounio	39,215	18,378	-53.1%
The Acropolis of Lindos	99,732	61,028	-38.8%
Royal Tombs of Vergina	20,746	6,679	-67.8%
Ancient Olympia	73,273	20,606	-71.9%
Knossos (Crete)	170,378	54,568	-68.0%
Phaistos (Crete)	16,509	7,776	-52.9%
Ancient Korinthos ⁽¹⁾	20,682	5,709	-72.4%
Mystras ⁽¹⁾	24,460	9,751	-60.1%
Delphi	46,484	14,844	-68.1%
Other archaeological sites	831,647	318,854	-61.7%
II. VISITORS WHO PAID TICKET			
	2019	2020	Change 2020/2019
Total number of visitors who paid ticket (C+D)	1,797,312	538,067	-70.1%
C. Museums	461,250	122,451	-73.5%
D. Archaeological sites	1,336,062	415,616	-68.9%
III. VISITORS WITH FREE ADMISSION TICKETS			
	2019	2020	Change 2020/2019
Total number of visitors with free admission ticket (E+F)	856,597	316,157	-63.1%
E. Museums	268,839	71,997	-73.2%
F. Archaeological sites	587,758	244,160	-58.5%
IV. RECEIPTS (euros)			
	2019	2020	Change 2020/2019
Total Receipts (G+H)	20,192,277	5,583,662	-72.3%
G. Museums	3,470,122	996,359	-71.3%
H. Archaeological sites	16,722,155	4,587,303	-72.6%

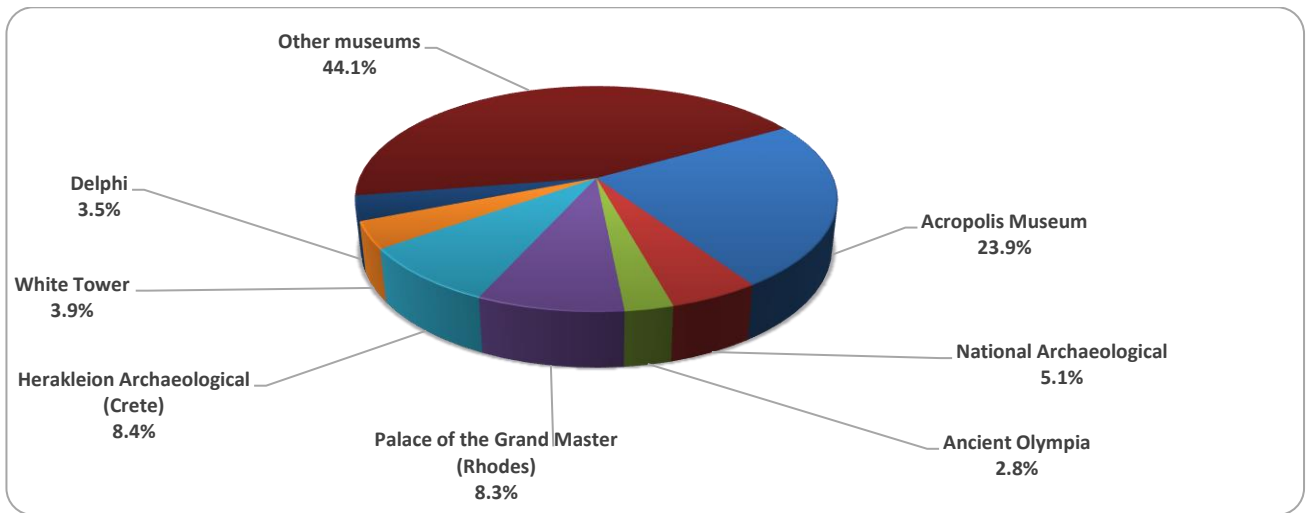
⁽¹⁾ Flat rate ticket, valid both for the museum and the archaeological site.

The following graphs depict the evolution of the receipts (Graph 2), as well as the number of visitors by Museum and Archaeological Site (Graphs 3 and 4).

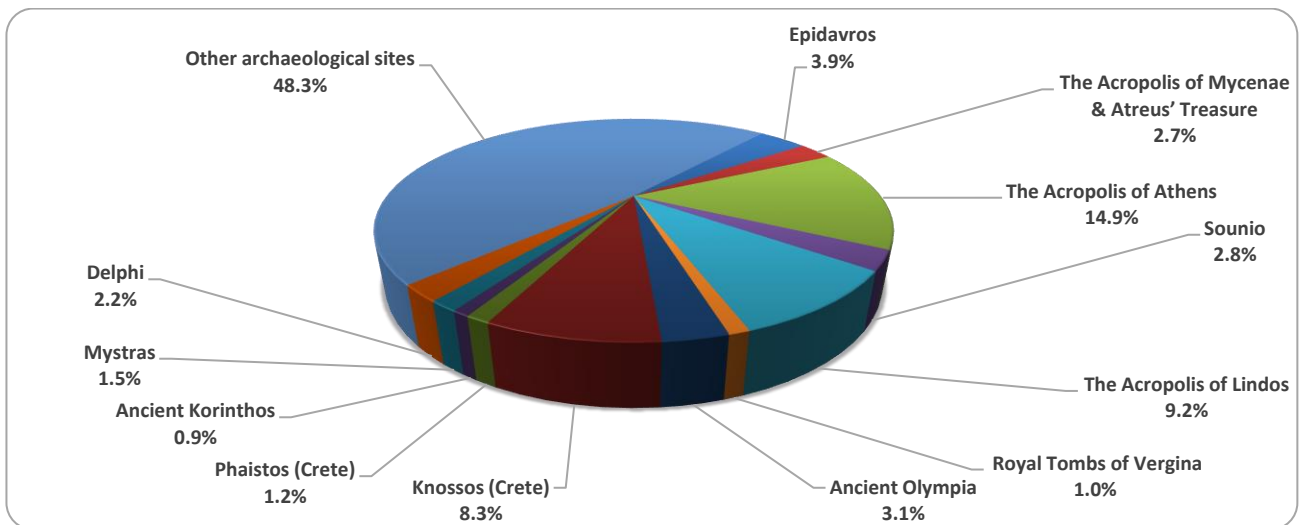
Graph 2: Receipts from Museums and Archaeological Sites (January 2015 – August 2020)
(in thousand euro)



Graph 3: Percentage distribution of visitors by Museum, August 2020



Graph 4: Percentage distribution of visitors by Archaeological site, August 2020



**TABLE 2: VISITORS OF MUSEUMS AND ARCHAEOLOGICAL SITES - TOTAL RECEIPTS
(2018, 2019, JANUARY-AUGUST 2019, 2020)**

I. VISITORS					
Museums and Archaeological sites	2018	2019	JANUARY-AUGUST		change 2020/2019
			2019	2020 ⁽²⁾	
Total number of visitors (A+B)	18,603,576	19,559,278	13,526,465	2,725,284	-79.9%
A. Museums (C+E)	5,702,211	5,895,927	4,074,916	849,880	-79.1%
Acropolis Museum	1,774,304	1,755,435	1,238,866	264,887	-78.6%
National Archaeological	594,219	608,876	417,555	77,080	-81.5%
Ancient Olympia	156,658	159,348	116,113	16,461	-85.8%
Palace of the Grand Master (Rhodes)	242,759	263,958	176,402	29,854	-83.1%
Herakleion Archaeological (Crete)	555,031	660,533	444,698	45,094	-89.9%
White Tower	225,944	251,760	168,084	50,773	-69.8%
Delphi	249,754	275,993	192,616	33,653	-82.5%
Other museums	1,903,542	1,920,024	1,320,582	332,078	-74.9%
B. Archaeological Sites (D+F)	12,901,365	13,663,351	9,451,549	1,875,404	-80.2%
Epidavros ⁽¹⁾	548,890	535,751	382,635	71,421	-81.3%
The Acropolis of Mycenae & Atreus' Treasure	495,993	502,619	358,723	60,084	-83.3%
The Acropolis of Athens	3,150,604	3,593,586	2,470,905	472,620	-80.9%
Sounio	306,665	337,544	233,591	73,654	-68.5%
The Acropolis of Lindos	489,431	525,757	360,546	95,113	-73.6%
Royal Tombs of Vergina	222,503	223,151	156,558	30,112	-80.8%
Ancient Olympia	484,238	457,710	322,024	48,699	-84.9%
Knossos (Crete)	855,663	949,192	651,294	113,523	-82.6%
Phaistos (Crete)	134,538	121,796	77,622	22,160	-71.5%
Ancient Korinthos ⁽¹⁾	196,944	214,023	140,091	23,007	-83.6%
Mystras ⁽¹⁾	145,939	147,713	105,707	24,052	-77.2%
Delphi	405,947	405,348	282,169	56,916	-79.8%
Other archaeological sites	5,464,010	5,649,161	3,909,684	784,043	-79.9%
II. VISITORS WHO PAID TICKET					
	2018	2019	JANUARY-AUGUST		change 2020/2019
			2019	2020	
Total number of visitors who paid ticket (C+D)	11,576,404	12,434,987	8,419,158	1,570,882	-81.3%
C. Museums	3,155,269	3,345,997	2,268,876	447,380	-80.3%
D. Archaeological sites	8,421,135	9,088,990	6,150,282	1,123,502	-81.7%
III. VISITORS WITH FREE ADMISSION TICKETS					
	2018	2019	JANUARY-AUGUST		change 2020/2019
			2019	2020	
Total number of visitors with free admission ticket (E+F)	7,027,172	7,124,291	5,107,307	1,154,402	-77.4%
E. Museums	2,546,942	2,549,930	1,806,040	402,500	-77.7%
F. Archaeological sites	4,480,230	4,574,361	3,301,267	751,902	-77.2%
IV. RECEIPTS (euros)					
	2018	2019	JANUARY-AUGUST		change 2020/2019
			2019	2020	
Total Receipts (G+H)	115,774,516	130,938,846	90,334,429	13,966,519	-84.5%
G. Museums	18,251,493	23,343,026	16,003,138	2,797,438	-82.5%
H. Archaeological sites	97,523,023	107,595,820	74,331,291	11,169,081	-85.0%

⁽¹⁾ Flat rate ticket, valid both for the museum and the archaeological site.

⁽²⁾ Museums remained closed from March 14th to June 15th, 2020, while Archaeological sites remained closed from March 14th to May 17th, 2020, in the framework of the preventive measures for Covid-19 pandemic.

EXPLANATORY NOTES

Survey on Museums and Archaeological Sites Attendance	<p>The Survey on Museums and Archaeological Sites Attendance has been producing results since 1970. The survey collects data from the Archaeological Receipts Fund (ARF) of the Ministry of Culture and Sports concerning the number of visitors and the receipts from the tickets sold in the Museums and Archaeological sites of the country.</p> <p>The corresponding data for the Acropolis Museum is available from December 2009 onwards.</p>
Legal Framework	<p>The survey is conducted since 1970 on a regular basis and it produces results on a monthly and yearly basis, in compliance with the Joint Ministerial Decision 15189/B379/73.</p>
Reference Period	<p>01/08/2020 to 31/08/2020</p>
Methodology and Definitions	<p>The Survey is conducted on a monthly basis from data mainly collected from the Archaeological Receipts Fund (ARF) of the Ministry of Culture and Sports concerning the number of visitors and the receipts from the tickets sold in the Museums and Archaeological sites of the Country. ELSTAT tabulates and presents the data for the whole of the Country, by month and by year.</p> <p>Number of flat rate tickets</p> <p>From April 1999 onwards, in some museums and the nearby archaeological sites, in addition to the ordinary ticket, a new “flat rate ticket” was established, which is valid for both the museum and the nearby archaeological site. The total number of these flat rate tickets for August 2020 was 38,037.</p>
References	<p>More information on the Survey on Museums and Archaeological Sites Attendance and detailed time series are available on: http://www.statistics.gr/en/statistics/-/publication/SCI21/</p>