



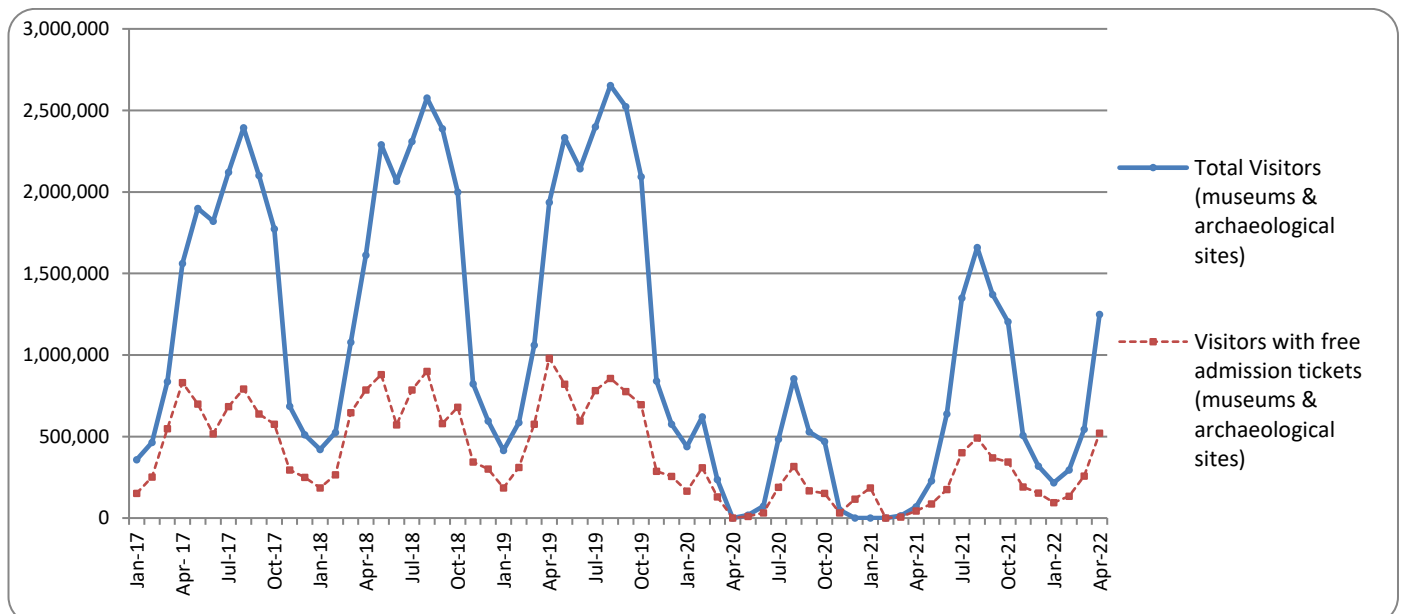
PRESS RELEASE

SURVEY ON MUSEUMS AND ARCHAEOLOGICAL SITES ATTENDANCE APRIL 2022

The Hellenic Statistical Authority (ELSTAT) announces the results of the *Survey on Museums and Archaeological Sites Attendance* for April 2022. More specifically:

- In April 2022 Museums operated fully, whereas during April 2021 they remained closed, given the fact that in the framework of the preventative measures against the Covid-19 pandemic, the operation of the museums was gradually suspended from November 1st 2020 until May 13th 2021 (Table 1).
- As regards Archaeological sites, in April 2022 compared with the corresponding period of 2021, an increase of 1164.7% was recorded at the number of visitors, of 669.7% in the number of free admission visitors and of 2460.1% in the corresponding receipts (Table 1).
- During the four month period from January to April 2022, Museums operated fully, in contrast to the corresponding period of 2021, during which they remained closed, given the fact that in the framework of the preventative measures against the Covid-19 pandemic, the operation of the museums was gradually suspended from November 1st 2020 until May 13th 2021 (Table 2).
- As regards Archaeological sites, during the four month period from January to April 2022, compared to the corresponding period of 2021, an increase of 1723.9% was recorded in the number of visitors, while an increase of 1104.5% was observed in the number of free admission visitors and of 2971.7% in the relevant receipts, given the suspension of operation of Archaeological sites from November 7th 2020 until May 13th 2021 (Table 2).

Graph 1: Visitors of Museums and Archaeological sites (January 2017 – April 2022)



Information on methodological issues:

Sectoral Statistics Division
Tourism and Culture Statistics Section
Head of Section: Eleni Papadopoulou
Tel: +30 213 135 2168
e-mail: e.papadopoulou@statistics.gr

Information for data provision:

Tel. +30 213 135 2022, 2308, 2310
e-mail: data.dissem@statistics.gr

**TABLE 1: VISITORS OF MUSEUMS AND ARCHAEOLOGICAL SITES - TOTAL RECEIPTS
(APRIL 2021 & APRIL 2022)**

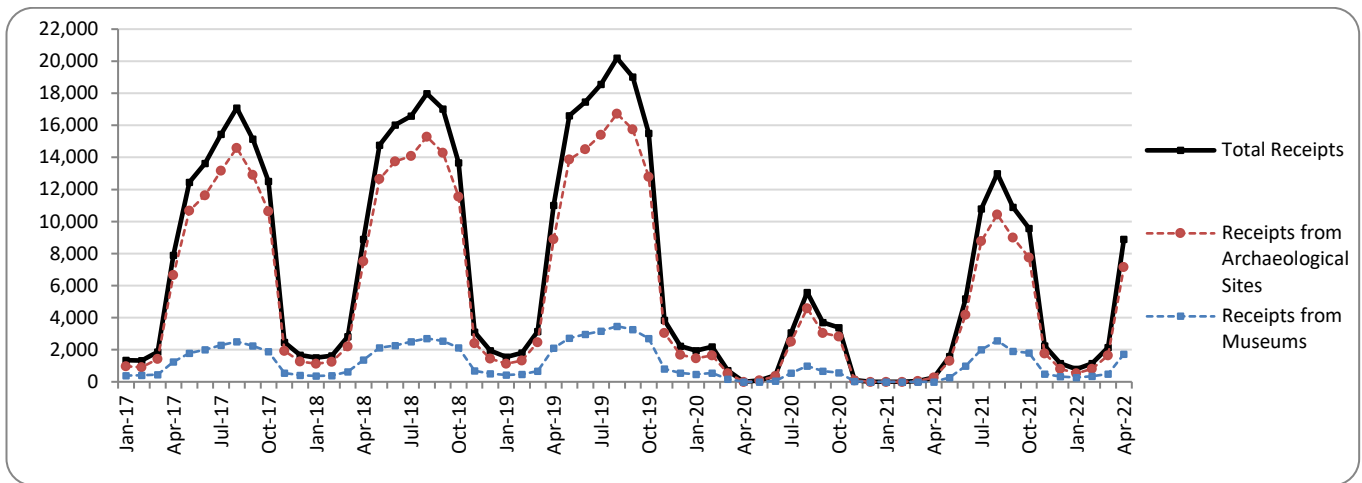
| I. NUMBER OF VISITORS | | | |
|--|---------------------|------------------|---------------------|
| Museums and Archaeological sites | 2021 ⁽²⁾ | 2022 | Change 2022/2021 |
| Total number of visitors (A+B) | 68,391 | 1,248,965 | 1726.2% |
| A. Museums (C+E) | - | 384,041 | - |
| Acropolis Museum | - | 121,165 | - |
| National Archaeological | - | 39,778 | - |
| Ancient Olympia | - | 11,880 | - |
| Palace of the Grand Master (Rhodes) | - | 16,081 | - |
| Herakleion Archaeological (Crete) | - | 16,317 | - |
| White Tower | - | 14,474 | - |
| Delphi | - | 14,012 | - |
| Other museums | - | 150,334 | - |
| B. Archaeological Sites (D+F) | 68,391 | 864,924 | 1164.7% |
| Epidavros ⁽¹⁾ | 839 | 41,818 | 4884.3% |
| The Acropolis of Mycenae & Atreus' Treasure | 614 | 39,452 | 6325.4% |
| The Acropolis of Athens | 22,284 | 246,409 | 1005.8% |
| Sounio | 13,500 | 27,311 | 102.3% |
| The Acropolis of Lindos | 249 | 30,681 | 12221.7% |
| Royal Tombs of Vergina | 0 | 16,467 | - |
| Ancient Olympia | 1,544 | 28,046 | 1716.5% |
| Knossos (Crete) | 1,738 | 58,297 | 3254.3% |
| Phaistos (Crete) | 133 | 5,053 | 3699.2% |
| Ancient Korinthos ⁽¹⁾ | 425 | 13,723 | 3128.9% |
| Mystras ⁽¹⁾ | 392 | 16,121 | 4012.5% |
| Delphi | 755 | 29,614 | 3822.4% |
| Other archaeological sites | 25,918 | 311,932 | 1103.5% |
| II. VISITORS WHO PAID TICKET | | | |
| | 2021 ⁽²⁾ | 2022 | Change 2022/2021 |
| Total number of visitors who paid ticket (C+D) | 24,598 | 727,532 | 2857.7% |
| C. Museums | - | 199,704 | - |
| D. Archaeological sites | 24,598 | 527,828 | 2045.8% |
| III. VISITORS WITH FREE ADMISSION TICKETS | | | |
| | 2021 ⁽²⁾ | 2022 | Change 2022/2021 |
| Total number of visitors with free admission ticket (E+F) | 43,793 | 521,433 | 1090.7% |
| E. Museums | - | 184,337 | - |
| F. Archaeological sites | 43,793 | 337,096 | 669.7% |
| IV. RECEIPTS (euros) | | | |
| | 2021 ⁽²⁾ | 2022 | Change 2022/2021 |
| Total Receipts (G+H) | 279,726 | 8,890,535 | 3078.3% |
| G. Museums | - | 1,729,365 | - |
| H. Archaeological sites | 279,726 | 7,161,170 | 2460.1% |

⁽¹⁾ Flat rate ticket, valid both for the museum and the archaeological site.

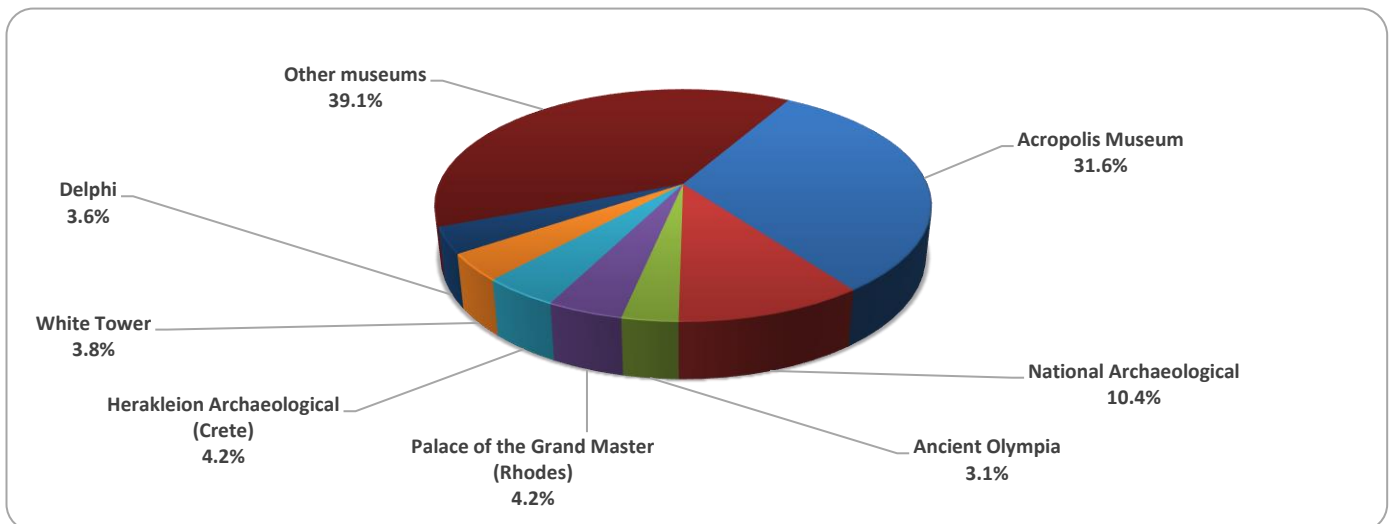
⁽²⁾ The operation of Museums was suspended gradually from November 1st 2020 until May 13th 2021. The operation of Archaeological Sites was suspended from November 7th 2020 until March 21st 2021, in the framework of the preventative measures against the Covid-19 pandemic.

The following graphs depict the evolution of the receipts of Museums and Archaeological Sites (Graph 2), as well as the number of visitors by Museum (Graph 3) and by Archaeological Site (Graph 4).

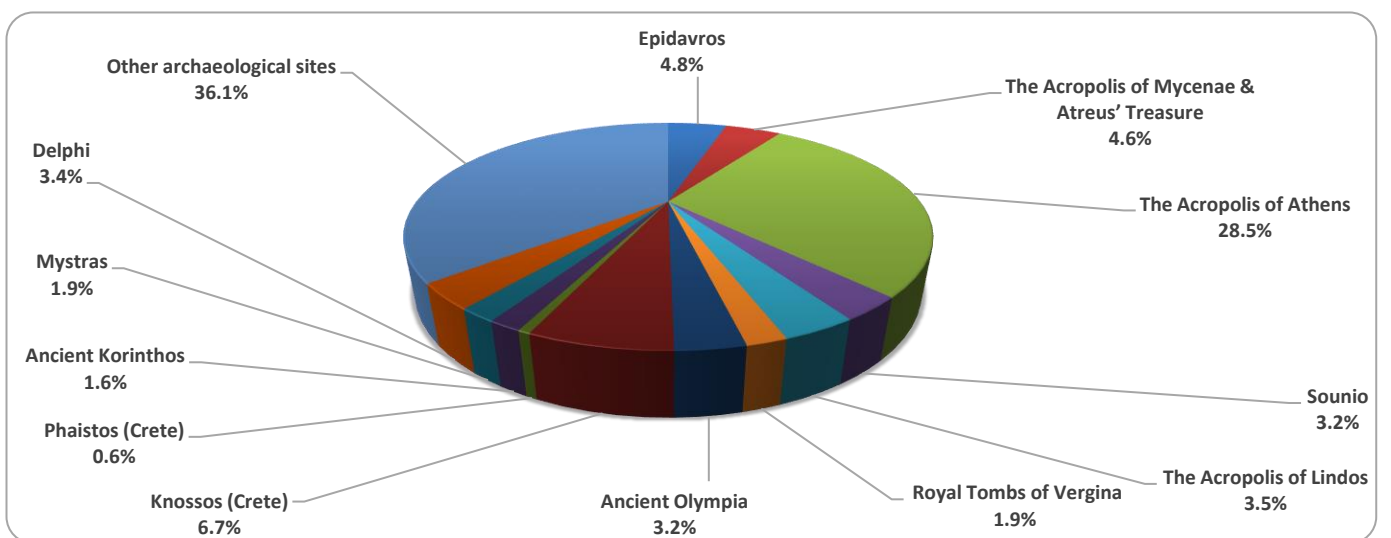
Graph 2: Receipts from Museums and Archaeological Sites (January 2017 – April 2022)
(in thousand euro)



Graph 3: Percentage distribution of visitors by Museum, April 2022



Graph 4: Percentage distribution of visitors by Archaeological site, April 2022



**TABLE 2: VISITORS OF MUSEUMS AND ARCHAEOLOGICAL SITES - TOTAL RECEIPTS
(2020, 2021, JANUARY- APRIL 2021, 2022)**

| I. VISITORS | | | | | |
|--|---------------------|---------------------|---------------------|-------------------|----------------|
| Museums and Archaeological sites | 2020 ⁽²⁾ | 2021 ⁽²⁾ | JANUARY -APRIL | | change |
| | | | 2021 ⁽²⁾ | 2022 | 2022/2021 |
| Total number of visitors (A+B) | 3,772,828 | 7,357,026 | 81,950 | 2,304,588 | 2712.2% |
| A. Museums (C+E) | 1,100,904 | 2,047,481 | - | 809,887 | - |
| Acropolis Museum | 325,969 | 547,908 | - | 247,614 | - |
| National Archaeological | 98,175 | 189,208 | - | 80,970 | - |
| Ancient Olympia | 21,956 | 34,367 | - | 18,175 | - |
| Palace of the Grand Master (Rhodes) | 54,572 | 142,530 | - | 20,092 | - |
| Herakleion Archaeological (Crete) | 63,027 | 127,574 | - | 23,382 | - |
| White Tower | 62,007 | 77,983 | - | 30,832 | - |
| Delphi | 41,984 | 58,102 | - | 29,245 | - |
| Other museums | 433,214 | 869,809 | - | 359,577 | - |
| B. Archaeological Sites (D+F) | 2,671,924 | 5,309,545 | 81,950 | 1,494,701 | 1723.9% |
| Epidavros ⁽¹⁾ | 103,532 | 182,118 | 942 | 65,632 | 6867.3% |
| The Acropolis of Mycenae & Atreus' Treasure | 78,839 | 156,227 | 707 | 65,630 | 9182.9% |
| The Acropolis of Athens | 620,132 | 1,219,717 | 29,441 | 481,231 | 1534.6% |
| Sounio | 100,319 | 171,348 | 14,913 | 67,646 | 353.6% |
| The Acropolis of Lindos | 156,462 | 349,418 | 276 | 32,633 | 11723.6% |
| Royal Tombs of Vergina | 37,586 | 56,790 | 0 | 30,261 | - |
| Ancient Olympia | 64,759 | 143,549 | 1,675 | 41,626 | 2385.1% |
| Knossos (Crete) | 175,927 | 445,160 | 1,806 | 70,089 | 3780.9% |
| Phaistos (Crete) | 31,885 | 48,599 | 166 | 6,212 | 3642.2% |
| Ancient Korinthos ⁽¹⁾ | 31,981 | 59,271 | 529 | 23,018 | 4251.2% |
| Mystras ⁽¹⁾ | 36,352 | 78,762 | 482 | 26,020 | 5298.3% |
| Delphi | 75,983 | 146,061 | 933 | 58,792 | 6201.4% |
| Other archaeological sites | 1,158,167 | 2,252,525 | 30,080 | 525,911 | 1648.4% |
| II. VISITORS WHO PAID TICKET | | | | | |
| | 2020 ⁽²⁾ | 2021 ⁽²⁾ | JANUARY -APRIL | | change |
| | | | 2021 ⁽²⁾ | 2022 | 2022/2021 |
| Total number of visitors who paid ticket (C+D) | 2,268,397 | 5,090,418 | 31,534 | 1,298,297 | 4017.1% |
| C. Museums | 605,426 | 1,289,896 | - | 410,849 | - |
| D. Archaeological sites | 1,662,971 | 3,800,522 | 31,534 | 887,448 | 2714.3% |
| III. VISITORS WITH FREE ADMISSION TICKETS | | | | | |
| | 2020 ⁽²⁾ | 2021 ⁽²⁾ | JANUARY -APRIL | | change |
| | | | 2021 ⁽²⁾ | 2022 | 2022/2021 |
| Total number of visitors with free admission ticket (E+F) | 1,504,431 | 2,266,608 | 50,416 | 1,006,291 | 1896.0% |
| E. Museums | 495,478 | 757,585 | - | 399,038 | - |
| F. Archaeological sites | 1,008,953 | 1,509,023 | 50,416 | 607,253 | 1104.5% |
| IV. RECEIPTS (euros) | | | | | |
| | 2020 ⁽²⁾ | 2021 ⁽²⁾ | JANUARY -APRIL | | change |
| | | | 2021 ⁽²⁾ | 2022 | 2022/2021 |
| Total Receipts (G+H) | 21,176,036 | 54,735,194 | 330,028 | 12,980,748 | 3833.2% |
| G. Museums | 4,047,401 | 10,385,644 | - | 2,843,177 | - |
| H. Archaeological sites | 17,128,635 | 44,349,550 | 330,028 | 10,137,571 | 2971.7% |

⁽¹⁾ Flat rate ticket, valid both for the museum and the archaeological site.

⁽²⁾ The operation of Museums was suspended from March 14th until June 16th 2020 and again gradually from November 1st 2020 until May 13th 2021. The operation of Archaeological Sites was suspended from March 14th until May 17th 2020 and from November 7th 2020 until March 21st 2021, in the framework of the preventative measures against the Covid-19 pandemic.

EXPLANATORY NOTES

| | |
|--|--|
| Survey on Museums and Archaeological Sites Attendance | The Survey on Museums and Archaeological Sites Attendance has been producing results since 1970. The survey collects data from the Hellenic Organization of Cultural Resources Development (HOCRED), supervised by the Ministry of Culture and Sports, on the number of visitors and the receipts from the tickets sold in the Museums and Archaeological sites of the country. The corresponding data for the Acropolis Museum is available from December 2009 onwards. |
| Legal Framework | The survey is conducted since 1970 on a regular basis and it produces results on a monthly and yearly basis, in compliance with the Joint Ministerial Decision 15189/B379/73. |
| Reference Period | 1/4/2022 - 30/4/2022 |
| Methodology and Definitions | The survey is conducted on a monthly basis from data mainly collected from the Hellenic Organization of Cultural Resources Development (HOCRED), supervised by the Ministry of Culture and Sports, on the number of visitors and the receipts from the tickets sold in the Museums and Archaeological sites of the Country. ELSTAT tabulates and presents the data for the whole of the Country, by month and by year. |
| | Number of flat rate tickets: |
| | From April 1999 onwards, in some museums and the nearby archaeological sites, in addition to the ordinary ticket, a new “flat rate ticket” was established, which is valid for both the museum and the nearby archaeological site. The total number of these flat rate tickets for April 2022 was 70,384 |
| References | More information on the Survey on Museums and Archaeological Sites Attendance and detailed time series are available on: http://www.statistics.gr/en/statistics/-/publication/SCI21/ |