



HELLENIC REPUBLIC

HELLENIC STATISTICAL AUTHORITY

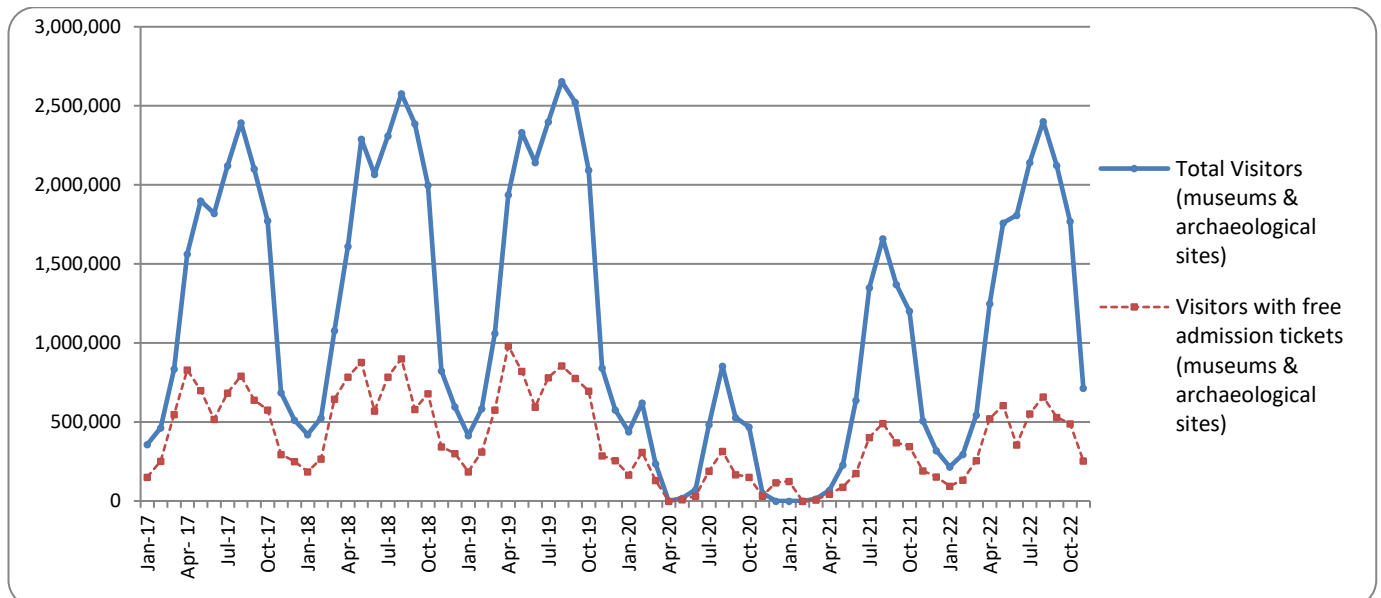
Piraeus, 16 March 2023

SURVEY ON MUSEUMS AND ARCHAEOLOGICAL SITES ATTENDANCE NOVEMBER 2022

The Hellenic Statistical Authority (ELSTAT) announces the results of the *Survey on Museums and Archaeological Sites Attendance* for November 2022. More specifically:

- During November 2022 compared with the corresponding month of 2021, Museums recorded a 61.5% increase in the number of visitors and a 64.3% increase in the number of free admission visitors, as well as a 61.2% increase in their receipts (Table 1).
- As regards Archaeological sites, in November 2022 compared with the corresponding month of 2021, an increase of 30.2% was recorded at the number of visitors, of 12.4% in the number of free admission visitors and of 45.1% in the corresponding receipts (Table 1).
- During the eleven month period from January to November 2022, compared to the corresponding period of 2021, an increase of 129.6% was recorded in the number of visitors, of 137.0% in the number of free admission visitors and of 126.4% in the relevant receipts, given the fact that in the framework of the preventative measures against the Covid-19 pandemic, the operation of the museums was gradually suspended from November 1st 2020 until May 13th 2021 (Table 2).
- As regards Archaeological sites, during the eleven month period from January to November 2022, compared to the corresponding period of 2021, an increase of 107.3% was recorded in the number of visitors, while an increase of 98.3% was observed in the number of free admission visitors and of 121.6% in the relevant receipts, given the suspension of operation of Archaeological sites from November 7th 2020 until March 21st 2021 (Table 2).

Graph 1: Visitors of Museums and Archaeological sites (January 2017 – November 2022)



Information on methodological issues:

Sectoral Statistics Division
Tourism and Culture Statistics Section
Head of Section: Eleni Papadopoulou
Tel: +30 213 135 2168
e-mail: e.papadopoulou@statistics.gr

Information for data provision:

Tel. +30 213 135 2022, 2308, 2310
e-mail: data.dissem@statistics.gr

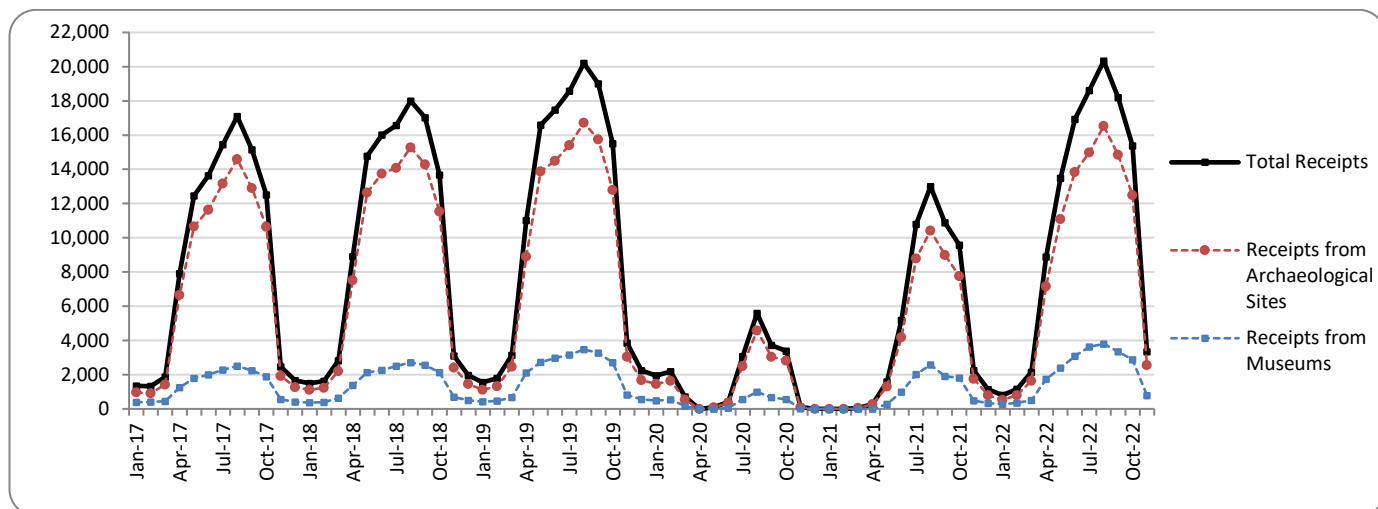
**TABLE 1: VISITORS OF MUSEUMS AND ARCHAEOLOGICAL SITES - TOTAL RECEIPTS
(NOVEMBER 2021 & NOVEMBER 2022)**

I. NUMBER OF VISITORS			
Museums and Archaeological sites	2021	2022	Change 2022/2021
Total number of visitors (A+B)	506,898	713,410	40.7%
A. Museums (C+E)	170,870	275,901	61.5%
Acropolis Museum	54,216	88,857	63.9%
National Archaeological	19,825	34,655	74.8%
Ancient Olympia	2,522	4,288	70.0%
Palace of the Grand Master (Rhodes)	6,157	10,454	69.8%
Herakleion Archaeological (Crete)	6,433	10,456	62.5%
White Tower	8,332	11,142	33.7%
Delphi	5,649	9,729	72.2%
Other museums	67,736	106,320	57.0%
B. Archaeological Sites (D+F)	336,028	437,509	30.2%
Epidavros ⁽¹⁾	11,277	16,589	47.1%
The Acropolis of Mycenae & Atreus' Treasure	12,671	16,216	28.0%
The Acropolis of Athens	118,875	172,388	45.0%
Sounio	15,768	16,568	5.1%
The Acropolis of Lindos	6,532	7,191	10.1%
Royal Tombs of Vergina	4,232	10,307	143.5%
Ancient Olympia	8,635	15,687	81.7%
Knossos (Crete)	16,201	19,822	22.4%
Phaistos (Crete)	1,789	1,398	-21.9%
Ancient Korinthos ⁽¹⁾	5,324	9,113	71.2%
Mystras ⁽¹⁾	3,201	4,820	50.6%
Delphi	13,014	16,199	24.5%
Other archaeological sites	118,509	131,211	10.7%
II. VISITORS WHO PAID TICKET			
	2021	2022	Change 2022/2021
Total number of visitors who paid ticket (C+D)	315,931	459,483	45.4%
C. Museums	95,199	151,542	59.2%
D. Archaeological sites	220,732	307,941	39.5%
III. VISITORS WITH FREE ADMISSION TICKETS			
	2021	2022	Change 2022/2021
Total number of visitors with free admission ticket (E+F)	190,967	253,927	33.0%
E. Museums	75,671	124,359	64.3%
F. Archaeological sites	115,296	129,568	12.4%
IV. RECEIPTS (euros)			
	2021	2022	Change 2022/2021
Total Receipts (G+H)	2,247,452	3,339,312	48.6%
G. Museums	485,892	783,125	61.2%
H. Archaeological sites	1,761,560	2,556,187	45.1%

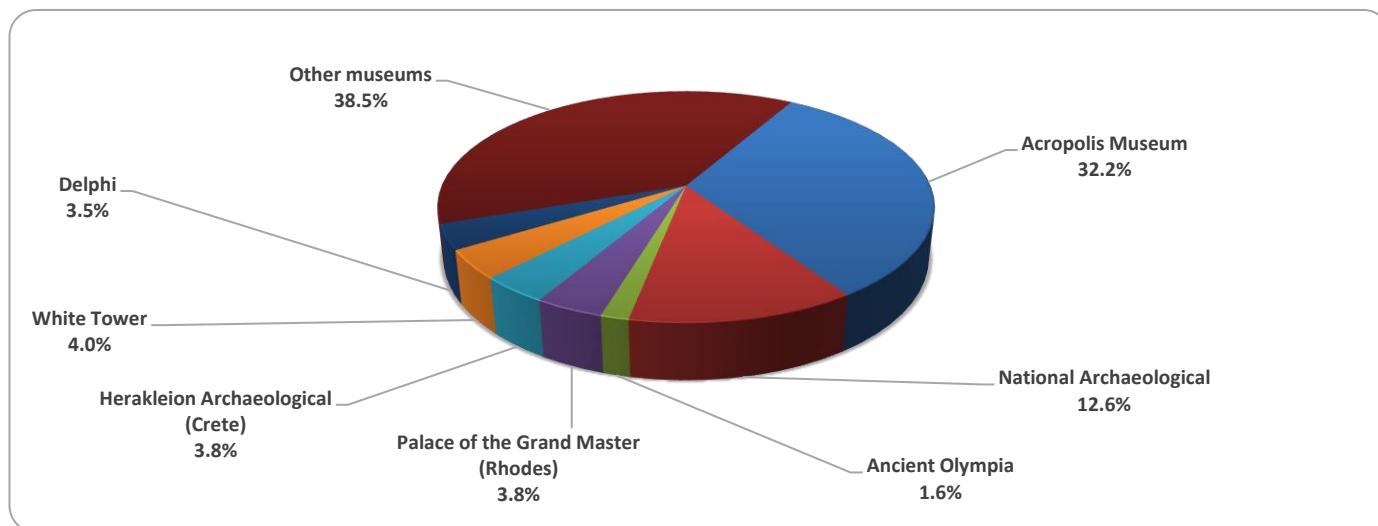
⁽¹⁾ Flat rate ticket, valid both for the museum and the archaeological site.

The following graphs depict the evolution of the receipts of Museums and Archaeological Sites (Graph 2), as well as the number of visitors by Museum (Graph 3) and by Archaeological Site (Graph 4).

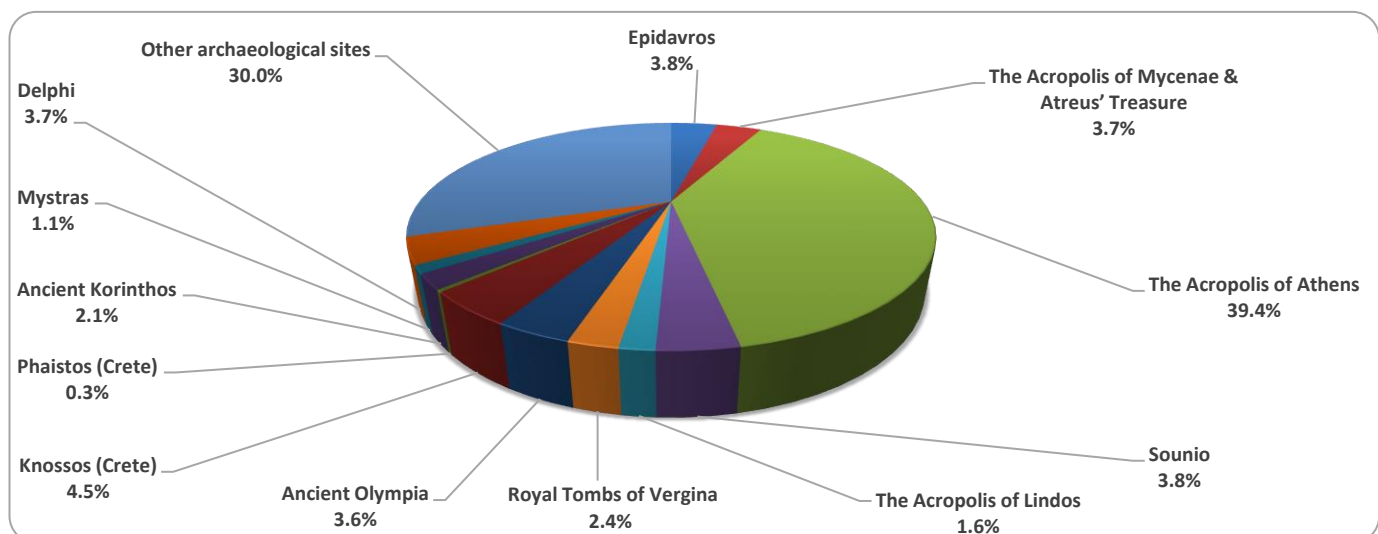
Graph 2: Receipts from Museums and Archaeological Sites (January 2017 – November 2022)
(in thousand euro)



Graph 3: Percentage distribution of visitors by Museum, November 2022



Graph 4: Percentage distribution of visitors by Archaeological site, November 2022



**TABLE 2: VISITORS OF MUSEUMS AND ARCHAEOLOGICAL SITES - TOTAL RECEIPTS
(2020, 2021, JANUARY- NOVEMBER 2021, 2022)**

I. VISITORS					
Museums and Archaeological sites	2020 ⁽²⁾	2021 ⁽²⁾	JANUARY -NOVEMBER		change 2022/2021
			2021 ⁽²⁾	2022	
Total number of visitors (A+B)	3,772,828	7,357,026	7,038,526	15,019,877	113.4%
A. Museums (C+E)	1,100,904	2,047,481	1,910,685	4,387,872	129.6%
Acropolis Museum	325,969	547,908	510,707	1,323,688	159.2%
National Archaeological	98,175	189,208	174,376	448,035	156.9%
Ancient Olympia	21,956	34,367	32,579	84,006	157.9%
Palace of the Grand Master (Rhodes)	54,572	142,530	140,799	258,246	83.4%
Herakleion Archaeological (Crete)	63,027	127,574	125,011	241,503	93.2%
White Tower	62,007	77,983	71,491	176,169	146.4%
Delphi	41,984	58,102	52,991	143,039	169.9%
Other museums	433,214	869,809	802,731	1,713,186	113.4%
B. Archaeological Sites (D+F)	2,671,924	5,309,545	5,127,841	10,632,005	107.3%
Epidavros ⁽¹⁾	103,532	182,118	175,894	381,736	117.0%
The Acropolis of Mycenae & Atreus' Treasure	78,839	156,227	150,177	360,359	140.0%
The Acropolis of Athens	620,132	1,219,717	1,146,673	2,884,188	151.5%
Sounio	100,319	171,348	162,722	302,390	85.8%
The Acropolis of Lindos	156,462	349,418	348,564	594,977	70.7%
Royal Tombs of Vergina	37,586	56,790	52,716	150,711	185.9%
Ancient Olympia	64,759	143,549	140,648	331,952	136.0%
Knossos (Crete)	175,927	445,160	441,466	822,486	86.3%
Phaistos (Crete)	31,885	48,599	48,189	74,298	54.2%
Ancient Korinthos ⁽¹⁾	31,981	59,271	56,637	149,665	164.3%
Mystras ⁽¹⁾	36,352	78,762	75,699	136,454	80.3%
Delphi	75,983	146,061	138,143	318,278	130.4%
Other archaeological sites	1,158,167	2,252,525	2,190,313	4,124,511	88.3%
II. VISITORS WHO PAID TICKET					
	2020 ⁽²⁾	2021 ⁽²⁾	JANUARY -NOVEMBER		change 2022/2021
			2021 ⁽²⁾	2022	
Total number of visitors who paid ticket (C+D)	2,268,397	5,090,418	4,926,061	10,565,355	114.5%
C. Museums	605,426	1,289,896	1,223,594	2,759,523	125.5%
D. Archaeological sites	1,662,971	3,800,522	3,702,467	7,805,832	110.8%
III. VISITORS WITH FREE ADMISSION TICKETS					
	2020 ⁽²⁾	2021 ⁽²⁾	JANUARY -NOVEMBER		change 2022/2021
			2021 ⁽²⁾	2022	
Total number of visitors with free admission ticket (E+F)	1,504,431	2,266,608	2,112,465	4,454,522	110.9%
E. Museums	495,478	757,585	687,091	1,628,349	137.0%
F. Archaeological sites	1,008,953	1,509,023	1,425,374	2,826,173	98.3%
IV. RECEIPTS (euros)					
	2020 ⁽²⁾	2021 ⁽²⁾	JANUARY -NOVEMBER		change 2022/2021
			2021 ⁽²⁾	2022	
Total Receipts (G+H)	21,176,036	54,735,194	53,592,583	119,249,406	122.5%
G. Museums	4,047,401	10,385,644	10,045,911	22,748,916	126.4%
H. Archaeological sites	17,128,635	44,349,550	43,546,672	96,500,490	121.6%

⁽¹⁾ Flat rate ticket, valid both for the museum and the archaeological site.

⁽²⁾ The operation of Museums was suspended from March 14th until June 16th 2020 and again gradually from November 1st 2020 until May 13th 2021. The operation of Archaeological Sites was suspended from March 14th until May 17th 2020 and from November 7th 2020 until March 21st 2021, in the framework of the preventative measures against the Covid-19 pandemic.

EXPLANATORY NOTES

Survey on Museums and Archaeological Sites Attendance

The Survey on Museums and Archaeological Sites Attendance has been producing results since 1970. The survey collects data from the Hellenic Organization of Cultural Resources Development (HOCRED), supervised by the Ministry of Culture and Sports, on the number of visitors and the receipts from the tickets sold in the Museums and Archaeological sites of the country. The corresponding data for the Acropolis Museum is available from December 2009 onwards.

Legal Framework

The survey is conducted since 1970 on a regular basis and it produces results on a monthly and yearly basis, in compliance with the Joint Ministerial Decision 15189/B379/73.

Reference Period

1/11/2022 - 30/11/2022

Methodology and Definitions

The survey is conducted on a monthly basis from data mainly collected from the Hellenic Organization of Cultural Resources Development (HOCRED), supervised by the Ministry of Culture and Sports, on the number of visitors and the receipts from the tickets sold in the Museums and Archaeological sites of the Country. ELSTAT tabulates and presents the data for the whole of the Country, by month and by year.

Number of flat rate tickets:

From April 1999 onwards, in some museums and the nearby archaeological sites, in addition to the ordinary ticket, a new “flat rate ticket” was established, which is valid for both the museum and the nearby archaeological site. The total number of these flat rate tickets for **November 2022** was **17,507**

References

More information on the Survey on Museums and Archaeological Sites Attendance and detailed time series are available on: <http://www.statistics.gr/en/statistics/-/publication/SCI21/>