



HELLENIC REPUBLIC
HELLENIC STATISTICAL AUTHORITY

Piraeus, 1 September 2025

LABOUR FORCE SURVEY: 2ND QUARTER 2025

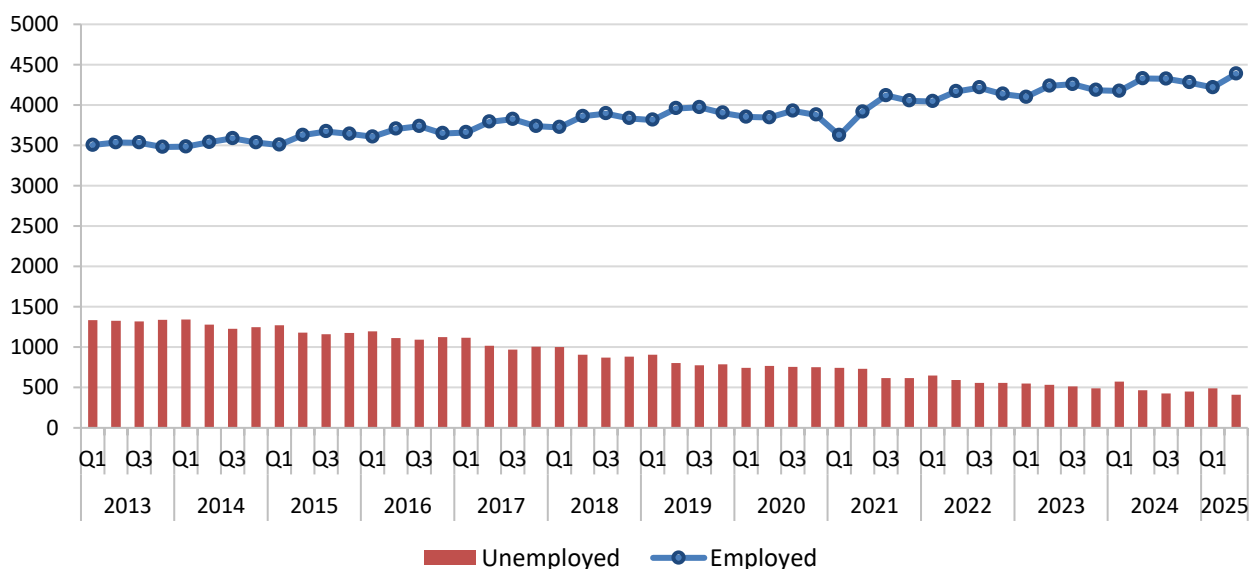
The Hellenic Statistical Authority (ELSTAT) announces the results of the Labour Force Survey for the 2nd quarter of 2025.

More specifically, during the 2nd quarter of 2025:

- The number of **employed persons** amounted to 4,386,832, recording an increase of 4.0% compared to the previous quarter and an increase of 1.4% compared to the same quarter of the previous year (Tables 1, 2).
- The number of **unemployed persons** amounted to 411,722, recording a decrease of 15.7% compared to the previous quarter and a decrease of 12.0% compared to the same quarter of the previous year (Tables 1, 4). The unemployment rate for the 2nd quarter of 2025 was 8.6% (Table 1). The unemployment rate was 10.4% in the previous quarter (2025 Q1) and 9.8% in the corresponding quarter of the previous year (2024 Q2).
- The number of **persons outside the labour force**, i.e., the persons who are neither working nor looking for a job, amounted to 4,205,058. In particular, persons outside the labour force **under the age of 75** amounted to 2,965,238. They decreased by 3.3% compared with the previous quarter and by 1.0% compared to the corresponding quarter of the previous year (Tables 1, 5).

Graph 1. Number of employed and unemployed

(In thousands)



It should be noted that the quarterly estimates of the Survey are not subject to seasonal adjustment, while the monthly estimates are seasonally adjusted. Therefore, the average of the seasonally adjusted monthly estimates may differ from the estimate for the corresponding quarter.

Information on methodological issues

Population, Employment and Cost of Living Statistics Division
Section of Labour Statistics
Konstantinos Loizos
Tel: +30 213 135 2173
E-mail: k.loizos@statistics.gr

Information for data provision

Tel: 213 135 2022
e-mail: data.dissem@statistics.gr

I. EMPLOYMENT STATUS

Table 1. Employment status by sex, age, Region, educational level, and citizenship ⁽¹⁾, 2nd quarter 2025

(In thousands)

		Employed	Unemployed	Persons outside the labour force	Unemployment rate (%)	Labour force rate (%)
	Total⁽²⁾	4,386.8	411.7	4,205.1	8.6	53.3
SEX	Males	2,467.6	191.9	1,693.1	7.2	61.1
	Females	1,919.3	219.8	2,512.0	10.3	46.0
AGE	15 - 19	25.3	8.7	584.2	25.6	5.5
	20 - 24	194.2	40.2	219.8	17.2	51.6
	25 - 29	380.4	59.5	102.8	13.5	81.1
	30 - 44	1,486.6	142.7	232.9	8.8	87.5
	45 - 64	2,164.7	152.8	714.8	6.6	76.4
	65+	135.6	7.8	2,350.6	5.4	5.7
REGION (NUTS 2)	Anatoliki Makedonia & Thraki (Eastern Macedonia and Thrace)	226.0	27.0	250.5	10.7	50.2
	Kentriki Makedonia (Central Macedonia)	727.0	96.1	753.6	11.7	52.2
	Dytiki Makedonia (Western Macedonia)	95.1	15.9	120.1	14.3	48.0
	Ipeiros (Epirus)	127.8	14.1	146.7	9.9	49.2
	Thessalia (Thessaly)	278.3	14.4	320.1	4.9	47.8
	Ionioi Nisoi (Ionian Islands)	86.9	8.3	73.9	8.7	56.3
	Dytiki Ellada (Western Greece)	249.8	22.2	291.0	8.2	48.3
	Stereia Ellada	217.8	20.1	229.0	8.4	51.0
	Attiki (Attica)	1,632.6	147.1	1,403.3	8.3	55.9
	Peloponnissos (Peloponnese)	227.9	22.5	211.4	9.0	54.2
	Voreio Aigaio (Northern Aegean)	79.6	5.7	79.6	6.6	51.7
	Notio Aigaio (Southern Aegean)	153.0	6.0	110.4	3.8	59.0
	Kriti (Crete)	285.0	12.3	215.5	4.1	58.0
EDUCATIONAL LEVEL	Less than primary	22.7	2.8	186.3	11.0	12.0
	Primary education	285.3	38.6	1,104.6	11.9	22.7
	Secondary education	1,998.2	210.4	2,051.0	9.5	51.8
	Post - secondary	420.6	46.9	136.2	10.0	77.4
	Tertiary Education	1,660.1	113.0	601.7	6.4	74.7
CITIZENSHIP	Greek	4,252.4	401.3	4,151.5	8.6	52.9
	Foreign	134.4	10.4	53.5	7.2	73.0

The highest unemployment rates are observed among women, persons aged 15-19 years, in the Region of Dytiki Makedonia (Western Macedonia), and persons that have completed primary education. The highest percentage of the labour force is observed among men, persons aged 30-44 years, in the Region of Notio Aigaio (Southern Aegean), persons that have completed post - secondary education and persons of foreign citizenship (Table 1).

⁽¹⁾ The definitions of the characteristics that are presented in Table 1 and the other tables of the press release can be found in the **Explanatory notes**, at the end of the press release, under "Definitions".

⁽²⁾ Any difference between the grand total and the sum of the detailed categories is due to rounding. The educational attainment level is not recorded for persons aged 90+.

II. CHARACTERISTICS OF EMPLOYED PERSONS

Table 2 presents the number of employed by professional status, occupation, full-time and part-time employment, permanent and temporary job, for the 2nd quarter 2025. Furthermore, the table includes the corresponding data for the previous quarter and the same quarter one year ago, as well as the corresponding quarterly and annual rates of change.

Table 2. Employed persons by professional status, occupation, full-time and part-time job, permanent or temporary job

(In thousands)

	2nd quarter 2025	% of total	1st quarter 2025	2nd quarter 2024	Quarterly rate of change (%)	Annual rate of change (%)
Total	4,386.8	100.0	4,216.8	4,327.8	4.0	1.4
Professional status						
Self-employed with employees	318.8	7.3	307.8	325.0	3.6	-1.9
Self-employed without employees	784.2	17.9	784.0	845.9	0.0	-7.3
Employees	3,161.3	72.1	3,006.3	2,999.1	5.2	5.4
Family workers	122.6	2.8	118.7	157.8	3.3	-22.3
Occupation						
Legislators, senior officials and managers	123.0	2.8	128.1	123.7	-4.0	-0.6
Professionals	993.3	22.6	1,003.7	974.9	-1.0	1.9
Technicians and associate professionals	299.6	6.8	280.0	280.3	7.0	6.9
Clerks	491.9	11.2	470.2	462.4	4.6	6.4
Service workers and shop and market sale workers	1,010.4	23.0	927.7	1,007.8	8.9	0.3
Skilled agricultural and fishery workers	367.9	8.4	375.8	431.5	-2.1	-14.7
Craft and related trade workers	412.5	9.4	399.8	417.4	3.2	-1.2
Plant and machine operators and assemblers	310.8	7.1	297.4	289.9	4.5	7.2
Elementary occupations	314.0	7.2	268.0	274.1	17.2	14.6
Other unclassified persons	63.4	1.4	66.0	65.8	-3.9	-3.6
Full-time / part-time job						
Full time	4,136.2	94.3	3,966.1	4,044.9	4.3	2.3
Part time	250.7	5.7	250.6	282.9	0.0	-11.4
Employees by permanent - temporary job						
Permanent	2,813.4	89.0	2,775.7	2,669.7	1.4	5.4
Temporary	347.9	11.0	230.6	329.4	50.9	5.6

In the 2nd quarter 2025, the majority of the employed are working as employees (72.1%), whereas a significant share is working as self-employed without employees (17.9%).

Part-time employment amounts to 5.7%, remaining stable as compared with the previous quarter and recording a decrease by 11.4% compared to the corresponding quarter of the previous year. The share of persons with temporary jobs is 11.0%, increased by 50.9% compared to the previous quarter and by 5.6% compared to the corresponding quarter of the previous year.

The occupations gathering the largest shares of the employed are Service workers and shop and market sale workers (23.0%) and Professionals (22.6%). Compared to the previous quarter, the largest increase occurs for Elementary occupations (17.2%) and for Service workers and shop and market sale workers (8.9%) whereas the largest decrease is observed in Legislators, senior officials and managers (-4.0%). In comparison with the 2nd quarter of 2024, the largest increase occurs in Elementary occupations (14.6%) whereas the largest decrease is observed in Skilled agricultural and fishery workers (-14.7%) (Table 2).

As of the 1st quarter 2014, an increase in the share of low skilled non-manual occupations is observed – a trend that is reversed to some extent since 2021 but continues upwards again after 2023. The share of skilled manual occupations decreases up to 2020 and increases from 2021 onwards. The share of highly skilled non-manual occupations follows an upward trend after 2015, with fluctuations, while the share of elementary occupations slightly decreases. The share of workers in agriculture, forestry, animal husbandry and fishing has been declining since 2014 (Graph 2).

Graph 2: Percentage of employed by broad categories of occupations

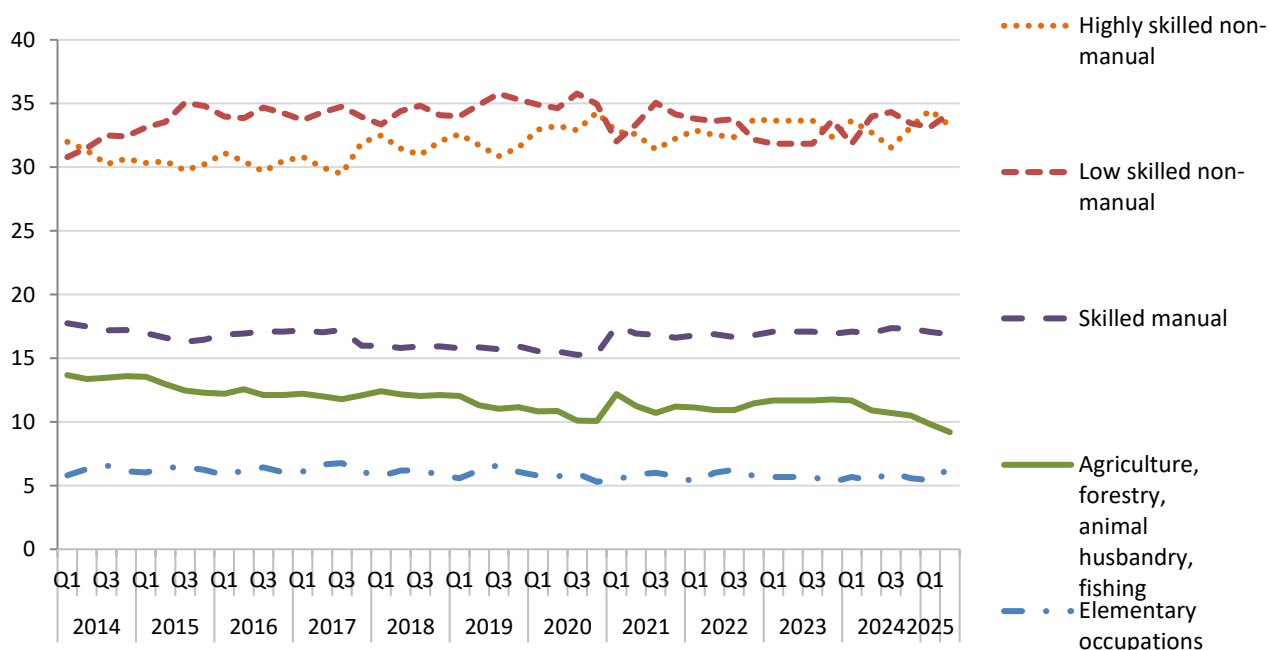


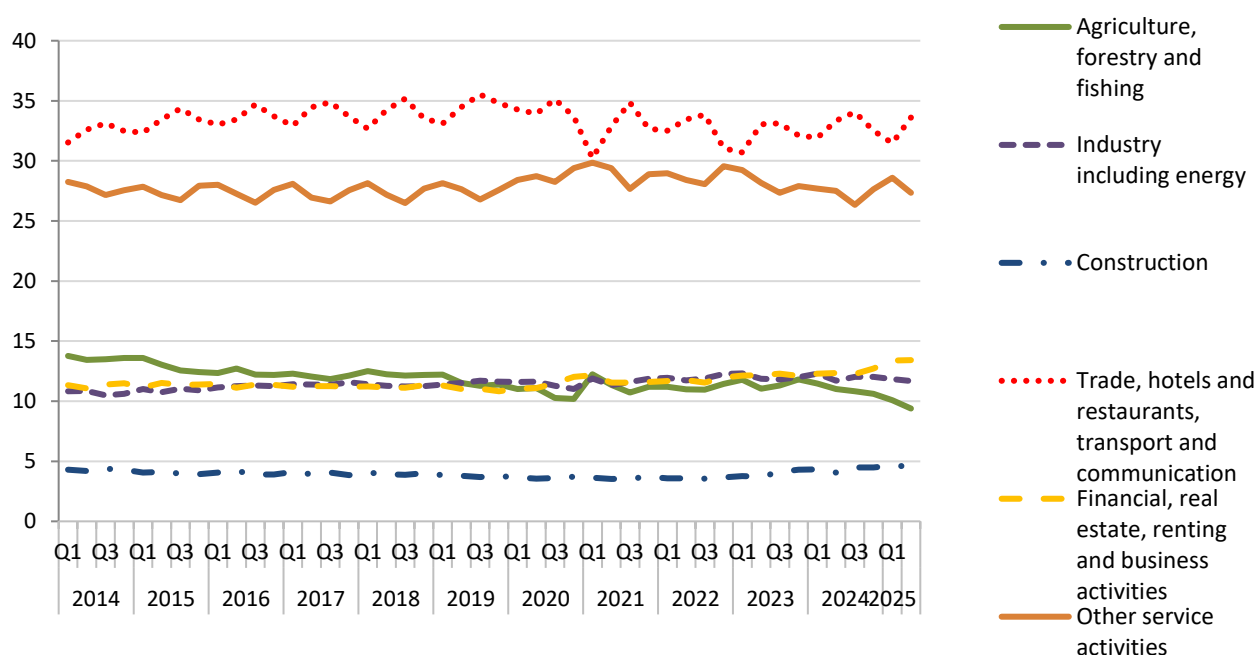
Table 3 presents the number of the employed by section of economic activity in the 2nd quarter 2025. Furthermore, the table includes the corresponding data for the previous quarter and the same quarter one year ago, as well as the corresponding quarterly and annual rates of change.

Table 3. Employed persons by section of economic activity*(In thousands)*

	2nd quarter 2025	% of total	1st quarter 2025	2nd quarter 2024	Quarterly rate of change (%)	Annual rate of change (%)
Agriculture, forestry and fishing	411.9	9.4	425.1	476.7	-3.1	-13.6
Mining and quarrying	7.0	0.2	6.6	9.3	6.1	-24.7
Manufacturing	429.1	9.8	411.6	407.5	4.3	5.3
Electricity, gas, steam and air conditioning supply	41.5	0.9	40.4	48.0	2.7	-13.5
Water supply; sewage, waste management and remediation activities	34.4	0.8	40.4	41.7	-14.9	-17.5
Construction	200.5	4.6	195.4	175.5	2.6	14.2
Wholesale and retail trade; repair of motor vehicles and motorcycles	759.9	17.3	727.0	706.3	4.5	7.6
Transportation and storage	235.4	5.4	233.7	240.5	0.7	-2.1
Accommodation and food service activities	434.9	9.9	313.9	439.7	38.5	-1.1
Information and communication	106.9	2.4	115.5	109.6	-7.4	-2.5
Financial and insurance activities	89.7	2.0	89.0	83.9	0.8	6.9
Real estate activities	12.7	0.3	12.0	12.5	5.8	1.6
Professional, scientific and technical activities	312.4	7.1	301.3	289.7	3.7	7.8
Administrative and support service activities	110.6	2.5	99.5	94.7	11.2	16.8
Public administration and defense; compulsory social security	346.6	7.9	350.2	361.1	-1.0	-4.0
Education	364.3	8.3	352.3	343.9	3.4	5.9
Human health and social work activities	289.4	6.6	315.3	317.0	-8.2	-8.7
Arts, entertainment and recreation	70.2	1.6	65.2	50.6	7.7	38.7
Other service activities	95.7	2.2	89.8	91.4	6.6	4.7
Activities of households as employers	25.8	0.6	26.9	24.8	-4.1	4.0
Activities of extraterritorial organizations and bodies	2.7	0.1	2.4	1.0	12.5	170.0

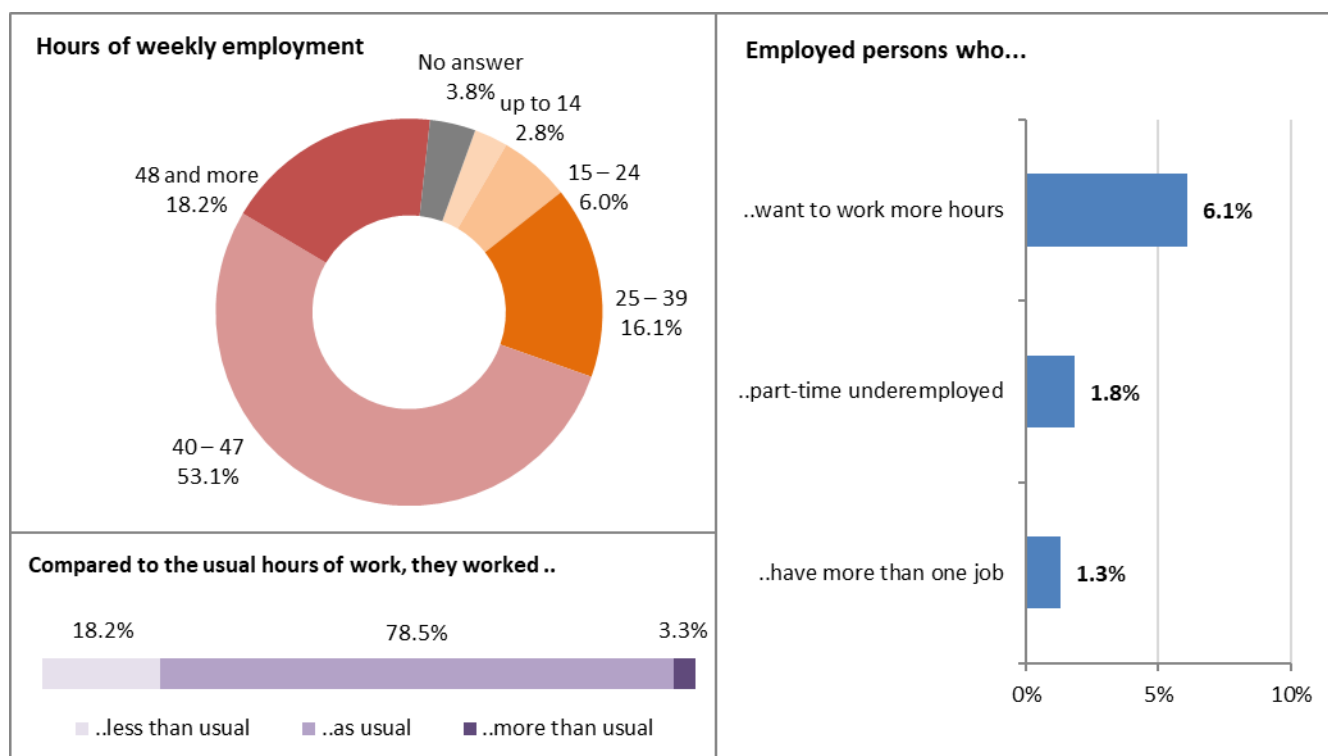
As regards the evolution of the percentage of people employed in broad sectors of economic activity during the period Q1 2014 – Q2 2025, large fluctuations are observed in the percentage of those working in the sector that includes trade, transport and communications, hotels and food service. A decrease is observed in the percentage of those working in agriculture, forestry and fishing while, since 2022, an increase is observed in the percentage of those working in the construction sector. From 2020, we observe a slight increase in industry-energy and an upward trend in the financial, real estate, renting and business activities sectors (Graph 3).

Graph 3: Percentage of employed persons by broad groups of economic activity



53.1% of the employed report having worked 40 - 47 hours in the reference week while a significant share (18.2%) report having worked for 48 hours or more. Most of the employed persons (78.5%) worked the usual hours during the reference week. 6.1% of them state that they wish to work more hours, 1.8% are underemployed part-time workers who wish to work more, and they are available to start working more in the next two weeks, and 1.3% of the employed report having more than one job (Graph 4).

Graph 4: Hours worked, existence of a second job, wish to work more hours and search for a job, 2nd quarter 2025



III. CHARACTERISTICS OF UNEMPLOYED PERSONS

Table 4 presents the number of unemployed by reason for leaving the last job, duration of unemployment, educational level and by registration in a public employment office (DYPA - former OAED) for the 2nd quarter 2025. Furthermore, the table includes the corresponding data for the previous quarter and the same quarter one year ago, as well as the quarterly and annual rates of change.

Table 4. Unemployed, by reason for leaving the last job³, duration of unemployment, educational level and registration in public employment office

(In thousands)

	2nd quarter 2025	% of total	1st quarter 2025	2nd quarter 2024	Quarterly rate of change (%)	Annual rate of change (%)
Total	411.7	100.0	488.1	467.6	-15.7	-12.0
Reason for leaving the last job						
Never worked in the past	84.1	20.4	95.9	108.1	-12.3	-22.2
Dismissed or made redundant	98.9	24.0	88.8	77.5	11.4	27.6
A job of limited duration that has ended	123.1	29.9	182.3	149.6	-32.5	-17.7
Other reason	49.7	12.1	54.5	66.5	-8.8	-25.3
Did not report a reason ⁽⁴⁾	55.9	13.6	66.6	66.0	-16.1	-15.3
Duration of unemployment						
Less than 1 month	11.9	2.9	16.7	11.7	-28.7	1.7
1 - 2 months	35.0	8.5	39.7	37.8	-11.8	-7.4
3 - 5 months	41.5	10.1	106.9	60.9	-61.2	-31.9
6 - 11 months	80.9	19.7	71.2	100.6	13.6	-19.6
<i>Long - term unemployed</i>						
12 - 17 months	46.0	11.2	68.0	52.4	-32.4	-12.2
18 - 23 months	37.3	9.1	24.3	42.7	53.5	-12.6
24 - 47 months	45.6	11.1	42.3	39.3	7.8	16.0
4 years or more	105.7	25.7	113.1	114.3	-6.5	-7.5
<i>Long-term unemployed total</i>	<i>234.6</i>	<i>57.0</i>	<i>247.6</i>	<i>248.6</i>	<i>-5.3</i>	<i>-5.6</i>
Did not answer	7.8	1.9	6.0	8.1	30.0	-3.7
Educational level						
Less than primary	2.8	0.7	5.7	3.5	-50.9	-20.0
Primary education	38.6	9.4	45.7	43.6	-15.5	-11.5
Secondary education	210.4	51.1	256.0	218.4	-17.8	-3.7
Post - secondary	46.9	11.4	62.6	71.9	-25.1	-34.8
Tertiary	113.0	27.4	118.2	130.2	-4.4	-13.2
Registration at a public employment office (DYPA)						
Registered at a public employment office and receives benefit or assistance	51.3	12.5	85.1	55.9	-39.7	-8.2
Registered at a public employment office but does not receive benefit or assistance	254.7	61.9	293.6	286.5	-13.2	-11.1
Not registered at a public employment office	102.4	24.9	107.6	119.7	-4.8	-14.5
Did not answer	3.4	0.8	1.8	5.5	88.9	-38.2

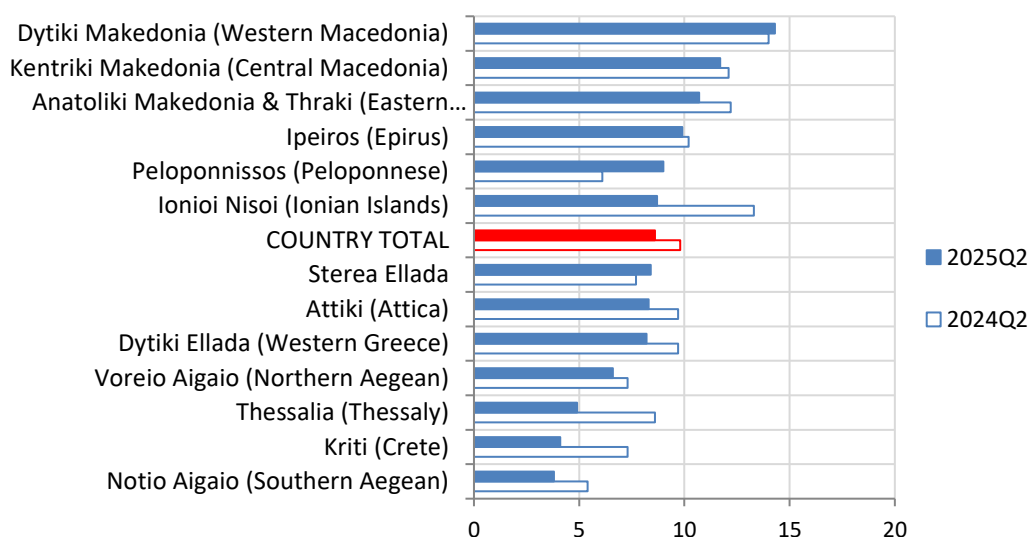
³ Persons who worked for the last time more than 8 years ago are not asked why they stopped working

Most unemployed persons report as main reason for stopping their last job that it was a job of limited duration that ended (29.9%). The share of the unemployed that have not worked in the past amounts to 20.4% (Table 4).

The majority of the unemployed (57.0%) are seeking a job for one year or more (long-term unemployed). 61.2% of the unemployed have completed up to secondary education. 24.9% of the unemployed report that they are not registered at the public employment office (DYPA), whereas 12.5% report that they receive a benefit or assistance from the public employment office (Table 4).

The Region of Dytiki Makedonia (Western Macedonia) and the Region of Kentriki Makedonia (Central Macedonia) recorded the highest unemployment rates whereas the lowest was observed in the Region of Notio Aigaio (Southern Aegean) (Table 1, Graph 5).

Graph 5: Unemployment rate (%) by Region (NUTS 2)



IV. CHARACTERISTICS OF PERSONS OUTSIDE THE LABOUR FORCE

Table 5 presents the number of the persons outside the labour force, aged less than 75, by existence of previous work experience, their willingness to work, as well as job search and immediate availability for work, for the 2nd quarter 2025. Furthermore, the table includes the corresponding data for the previous quarter and the same quarter one year ago, as well as the corresponding quarterly and annual rates of change.

Table 5. Persons outside the labour force, aged less than 75 years, by existence of previous work experience, willingness to work and availability for work

(In thousands)

	2nd quarter 2025	% of total	1st quarter 2025	2nd quarter 2024	Quarterly rate of change (%)	Annual rate of change (%)
Total	2,965.2	100.0	3,066.0	2,994.6	-3.3	-1.0
Existence of previous employment experience						
Never worked in the past	1,443.9	48.7	1,416.2	1,403.4	2.0	2.9
Worked in the last job more than 8 years ago ⁽⁴⁾	836.2	28.2	872.8	897.6	-4.2	-6.8
Worked in the last 8 years	685.1	23.1	777.0	693.6	-11.8	-1.2
Reason for leaving the last job						
Dismissed or made redundant	31.1	4.5	31.8	30.6	-2.2	1.6
A job of limited duration that has ended	73.2	10.7	163.7	87.2	-55.3	-16.1
Had to look after children or incapacitated adults	17.8	2.6	24.9	19.2	-28.5	-7.3
Resigned for other personal or family reasons	37.7	5.5	43.1	46.4	-12.5	-18.8
Education or training	23.6	3.4	29.2	29.4	-19.2	-19.7
Own illness or disability	23.3	3.4	28.6	35.3	-18.5	-34.0
Retirement	445.6	65.0	422.8	413.1	5.4	7.9
Other reasons	32.8	4.8	32.9	32.5	-0.3	0.9
Willingness to work						
Wish to work	182.9	6.2	244.9	171.2	-25.3	6.8
Do not want to work	2,756.6	93.0	2,788.6	2,792.1	-1.1	-1.3
Did not answer	25.7	0.9	32.4	31.2	-20.7	-17.6
Job search and immediate availability for work						
Persons seeking work but not immediately available	22.3	0.8	69.6	17.1	-68.0	30.4
Persons available to work but not seeking	98.4	3.3	106.1	81.5	-7.3	20.7
Other	2,844.5	95.9	2,890.3	2,895.9	-1.6	-1.8

Most of the persons outside the labour force, 15-74 years old, have never worked in the past (48.7%) or they worked for the last time 8 years ago or more (28.2%). Among the persons that worked for the last time during the previous eight years, the majority stopped working due to retirement (65.0%) or because it was a job of limited duration that ended (10.7%).

93.0% of the persons outside the labour force state that they do not want to work. 0.8% of the persons outside the labour force are seeking a job but are not currently available to start working, while 3.3% of them want to work, are available for work in the next two weeks but are not seeking work.

⁽⁴⁾ Persons who worked for the last time more than 8 years ago, are not asked why they stopped working.

EXPLANATORY NOTES

Labour Force Survey The Labour Force Survey produces estimates since 1981 (second Quarter of the year). From 1998 onwards it is a continuous quarterly survey. The main statistical objective of the Labour Force Survey is to divide the population of working age (15 years and over) into three mutually exclusive and exhaustive groups - persons in employment, unemployed persons and persons outside the labour force. In addition, the Labour Force Survey collects information on demographic characteristics, main job characteristics, the existence and characteristics of a second job, educational attainment, participation in education, previous working experience and search of a job.

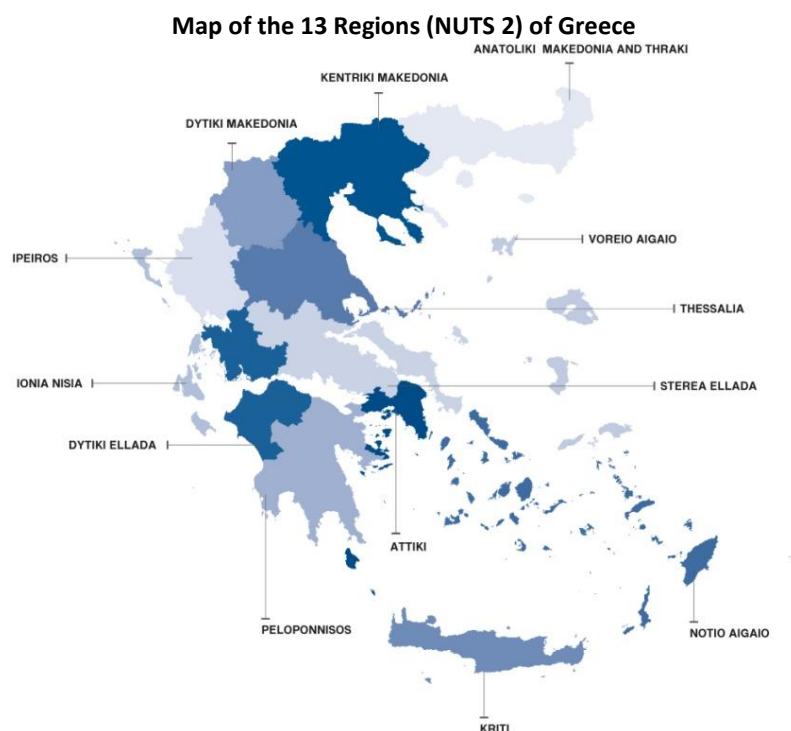
Legislation The current survey is fully harmonized with European legislation. The basic act is Regulation (EU) No 2019/1700 of the European Parliament and of the Council establishing a common framework for European statistics relating to persons and households, which is in force since 1/1/2021 and replaced Regulation (EC) 577/98. Implementing Regulation (EU) 2019/2240 sets out the design and characteristics of the survey and Implementing Regulation (EU) 2019/2241 lays down the technical elements of the monthly unemployment data.

Reference Period The sample of the Labour Force Survey is equally allocated to the 4 (or 5) weeks of the month. Every selected household is assigned to a specific week, the reference week, running from Monday to Sunday.

- for employment, the reference period is the reference week,
- for employment seeking, the reference period is the reference week and the previous 3 weeks.

Coverage The survey covers all members of the private households, who are residing at least one year in Greece and excludes the members of collective households (i.e. hospitals, hotels, military camps, asylums, homes for the elderly, orphanages, etc.).

Geographical classification The geographical classification is based on Nomenclature of Territorial Units for Statistics.



Methodology The estimates of the Labour Force Survey are produced by a suitable unbiased estimator, which takes into account: a) the probability of selection of every sampled household, b) the response rate in every primary sampling unit, c) the allocation of population by NUTS 2 Regions, gender and age group, and d) the distribution of private households to Greece total. As of January 2021, data are collected via electronic questionnaire (CATI, CAPI).

Definitions

Employed: comprise persons aged 15 to 89 (in completed years at the end of the reference week) who, during the reference week, were in one of the following categories:

- a) persons who during the reference week worked for at least 1 hour for pay or profit, including contributing family workers
- b) persons with a job or business who were temporarily not at work during the reference week but had an attachment to their job, where the following groups have a job attachment:
 - persons not at work due to holidays, working time arrangements, sick leave, maternity or paternity leave;
 - persons in job-related training;
 - persons on parental leave, either receiving and/or being entitled to job-related income or benefits, or whose parental leave is expected to be 3 months or less;
 - seasonal workers during the off-season, where they continue to regularly perform tasks and duties for the job or business, excluding fulfilment of legal or administrative obligations;
 - persons temporarily not at work for other reasons where the expected duration of the absence is 3 months or less.

Note: contributing family workers, persons in own-use production work, voluntary workers, unpaid trainees and individuals involved in other forms of work are defined in the 19th International Conference of Labour Statisticians (ICLS) Resolution concerning statistics of work, employment and labour underutilisation, adopted on 11 October 2013.

Unemployed persons comprise persons aged 15 to 74 who were, during the reference week, (a) not employed, (b) currently available for work, and (c) actively seeking work, or found a job to start within a period of at most 3 months from the end of the reference week.

Persons outside the labour force comprise persons who were in one of the following categories: (a) aged below 15, (b) aged above 89, or (c) aged 15 to 89 and neither employed nor unemployed during the reference week, according to the definitions of employment and unemployment described above.

Economically active population (labour force) are persons either employed or unemployed.

Unemployment Rate is the ratio of unemployed divided by total labour force.

Regions: the 13 NUTS 2 areas in which Greece is divided.

Educational level: the highest completed level of education provided in 4 categories. The category "Less than primary" includes persons that never went to school. The category "Primary education" includes persons that completed primary school", and the category "Secondary education" includes persons that completed at most "Lyceum"- Upper Secondary Education. The category "Tertiary education" also includes persons that completed master or PHD.

Self-employed with employees: persons that who work in their own business, professional practice or farm for the purpose of earning a profit, and who employ at least one other person.

Self-employed without employees: persons that who work in their own business, professional practice or farm for the purpose of earning a profit, and who do not employ any other person.

Employees: persons who work for a public or private employer and who receive compensation in the form of wages, salaries, fees, gratuities, payment by results or payment in kind.

Family workers: persons who help another member of the family to run an agricultural holding or other business, provided they are not considered as employees.

Part-time job: a worker's job where the normal hours of work are less than those of comparable full-time workers. The distinction between full-time and part-time job is based on the spontaneous answer given by the respondent.

Temporary work: work of **employees**, which will terminate either after a period fixed in advance, or after a period not known in advance, but nevertheless defined by objective criteria, such as the completion of an assignment or the period of absence of an employee temporarily replaced.

Duration of unemployment: the time that the respondent is looking for work and, simultaneously, had no job.

	Up to 2020	From 2021 onwards
Data collection	Paper questionnaires	By electronic means (CAPI)
Questionnaire	The number of the surveyed characteristics and the relevant questions remained the same for every quarter of the year.	The number of the surveyed characteristics and the relevant questions changes every quarter. For specific characteristics, only annual estimates are produced.
Definition of employed	<p>Population: Persons aged 15 years and over.</p> <p>Persons who reported that they did not work in the reference week but had a job from which they were temporarily absent are classified as employed, except in the following cases:</p> <ul style="list-style-type: none"> • Employees who are non-active, are absent for more than 3 months and receive less than 50 % of their salary. • Employees who are absent from work due to seasonality. <p>Self-employed persons are employed in all cases (including family workers).</p>	<p>Population: Persons aged 15-89 years.</p> <p>Persons who reported that they did not work in the reference week but had a job from which they were temporarily absent are considered to be employed only if the duration of their absence is less than 3 months or if they continue to receive income from their work.</p> <ul style="list-style-type: none"> • Sick leave, maternity/paternity leave, and educational leave are excluded, and in these cases, persons are classified as employed. <p>Seasonal workers, regardless of professional status, who reported that they did not work in the reference week but had a job from which they were temporarily absent due to seasonality are considered to be employed only if they perform tasks related to their work (e.g. renovation, business trip) excluding legal or administrative obligations.</p>
Weighting	Population adjustment according to gender, age and NUTS-2 Region.	Sample weights are applied for all members of the same household and in addition the results of the survey are now extrapolated to the estimated number of households in the Country.

Sector of economic activity: the classification of economic activities is based on the products that a business produces or the services that provides. Since 2008, a classification equivalent to NACE Rev. 2⁽⁵⁾ is used. Labour Force Survey collects information at 3-digit level for the main job and at 2-digit level for the second and the previous job.

- in Table 3, the NACE Rev.2 classification is used at 1-digit level,
- in Graphs 2 and 3, for the classification of economic activity, the following typologies are used:

Typology of economic sector categories – correspondence with 2-digit NACE Rev. 2 codes		
Typology used in Graph 2	Agriculture, forestry and fishing	01 - 03
	Industry including energy	05 - 39
	Construction	41 - 43
	Trade, hotels and restaurants, transport and communication	45 - 61
	Financial, real estate, renting and business activities	62 - 82
	Other service activities	84 - 99
Typology used in Graph 3	Agriculture, forestry and fishing	01 - 03
	Industry including energy	05 - 39
	Construction	41 - 43
	Trade	45 - 47
	Transport and communication	49 - 53, 58 - 61
	Hotels and restaurants	55 - 56
	Financial, real estate, renting and business activities	62 - 82
	Public administration	84
	Education	85
	Health	86
	Other service activities	87 - 99

(5) <http://www.statistics.gr/en/economic-activities>

Occupation: is a set of jobs consisting of similar tasks and duties. Since 2011 the International Standard Classification of Occupations (ISCO-08⁽⁶⁾) of ILO is used. The Labour Force Survey collects information at 3-digit level for the main, the second and the previous job.

- in Table 2 and in Graph 2, the ISCO-08 classification is used at 1-digit level, as well as the following typology:

Typology of occupation categories – correspondence with ISCO–08 codes	
Highly skilled non-manual <i>(Legislators, senior officials and managers, Professionals, Technicians and associate professionals)</i>	0,1,2,3
Low skilled non-manual <i>(Clerks, Service workers and shop and market sale workers)</i>	4,5
Skilled manual <i>(Craft and related trade workers, Plant and machine operators and assemblers)</i>	0,7,8
Occupations in agriculture, forestry and fishing <i>(skilled and non-skilled)</i>	6 and 92
Elementary occupations <i>(non-skilled workers, except those working in primary sector)</i>	9 except 92

Analytical description of the methodology and definitions used in the Labour Force Survey can be found on the website of ELSTAT at the link:

<http://www.statistics.gr/en/statistics/-/publication/SJO01/->

(6) <http://www.statistics.gr/en/occupation>