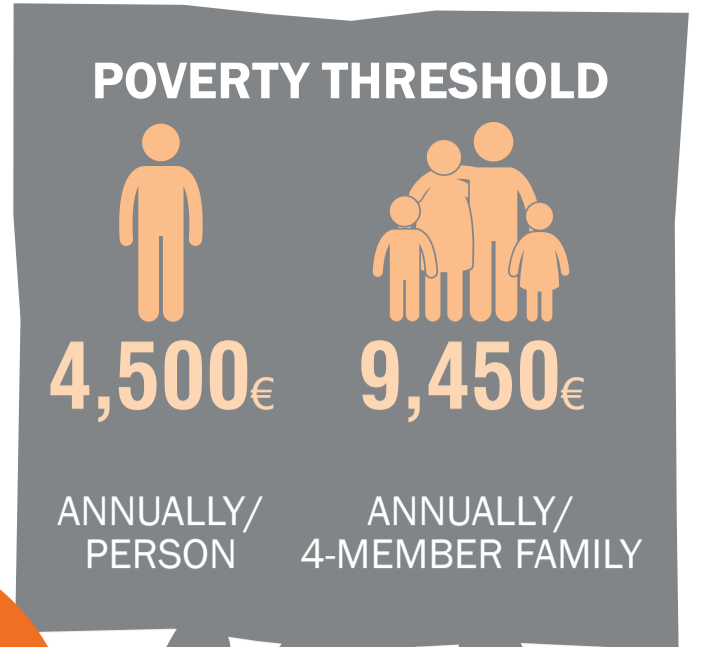


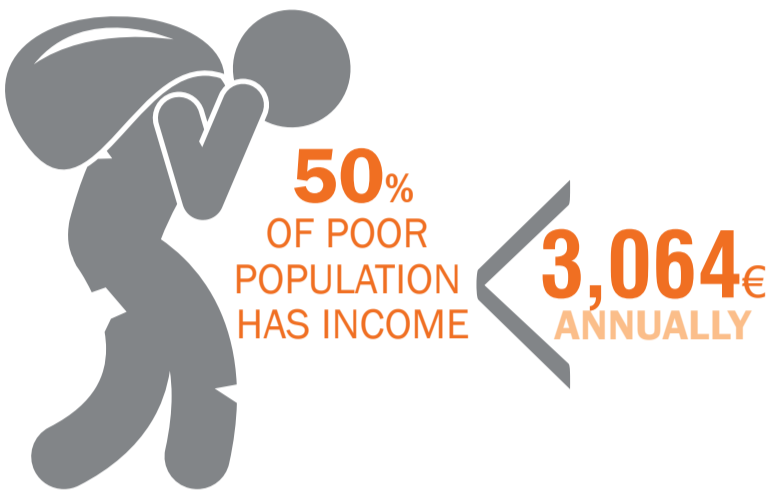
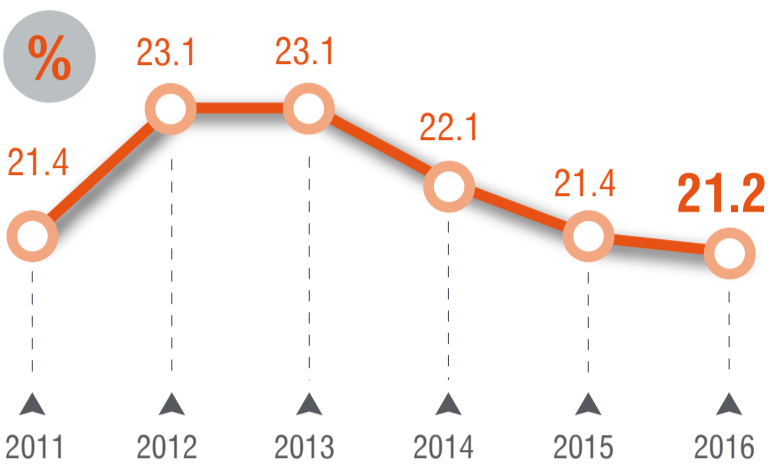
INCOME AND LIVING CONDITIONS OF HOUSEHOLDS

2016 (income reference period 2015)

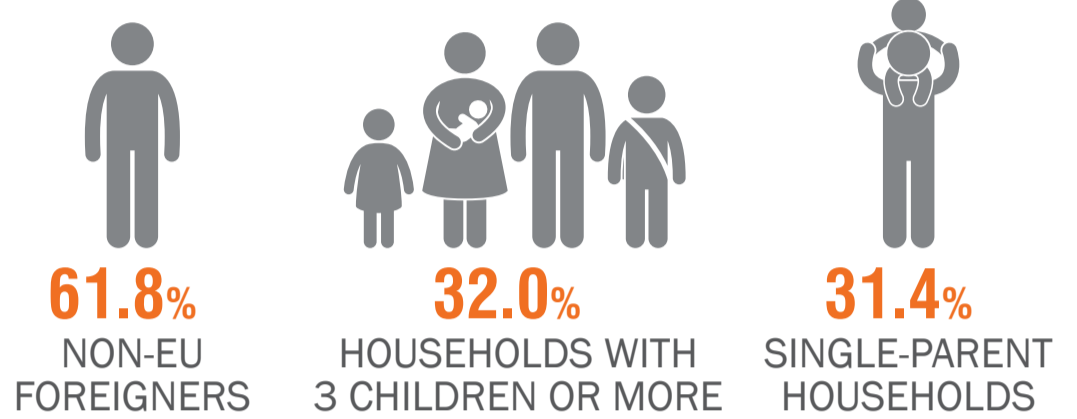


Population at-risk-of-poverty

Income < 60% of median equivalised income

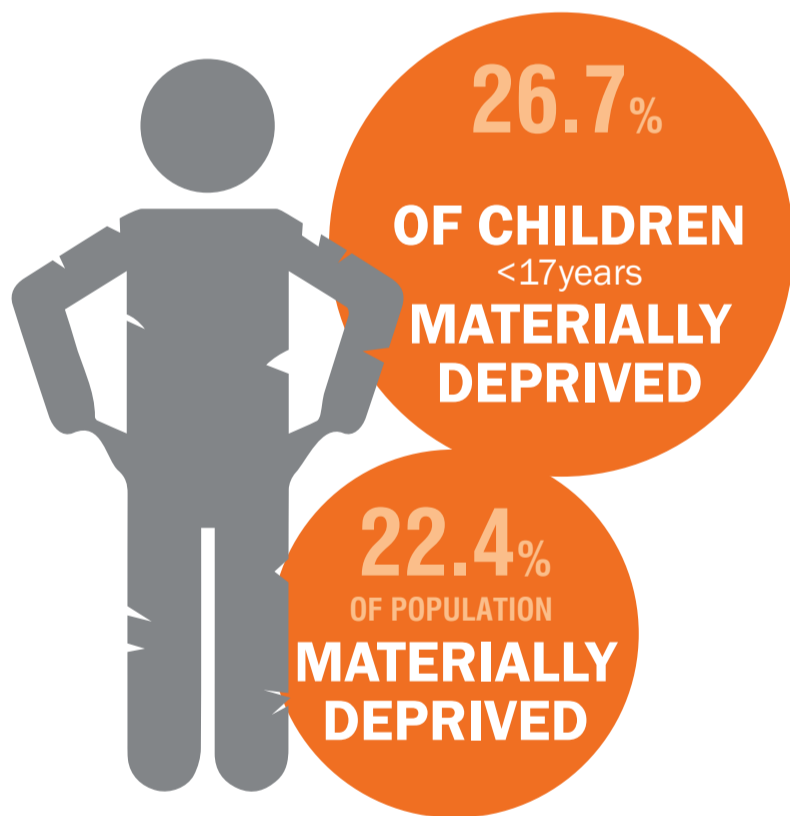


Higher risk of poverty

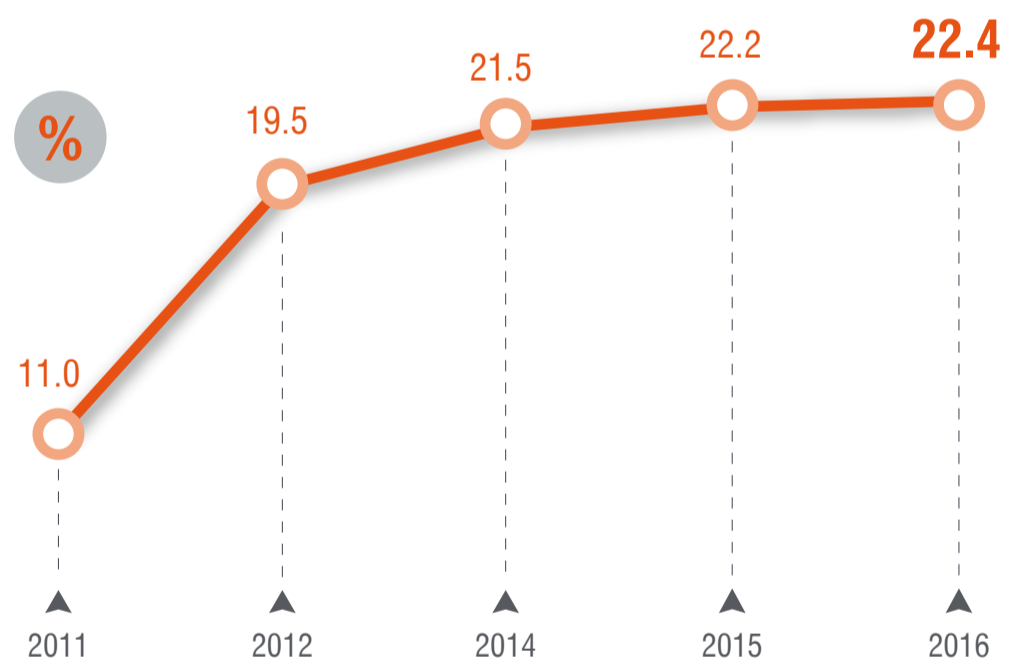


Difficulties to cover the cost of services

share of households paying fully or partly the cost



Material deprivation of population



Share of population with difficulties to afford or deprived of

