



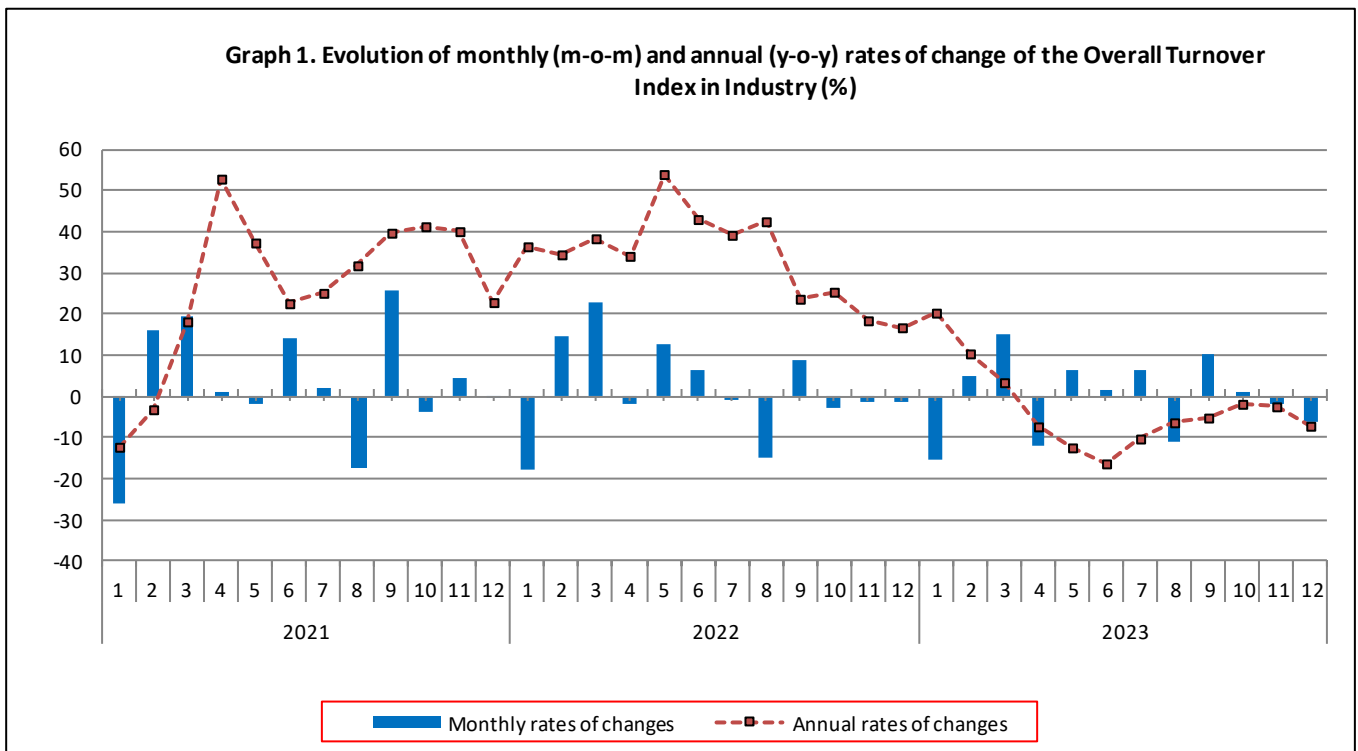
TURNOVER INDEX IN INDUSTRY: December 2023, y-o-y decrease of 7.2%

The Hellenic Statistical Authority announces the Turnover Index in Industry with base year 2015=100.0 for December 2023, the evolution of which on the basis of provisional data, is as follows:

The Overall Turnover Index in Industry (both Domestic and Non-Domestic Market) in December 2023 recorded a decrease of 7.2% compared with the corresponding index of December 2022. The Overall Turnover Index in Industry in December 2022 increased by 16.7% compared with the corresponding index in December 2021 (Table 1).

The Overall Turnover Index in Industry in December 2023, compared with November 2023, recorded a decrease of 6.3% (Table 6).

The average Overall Turnover Index in Industry for the 12-month period from January 2023 to December 2023 decreased by 4.1%, compared with the corresponding index of the 12-month period from January 2022 to December 2022. The average Overall Turnover Index in Industry for the 12-month period from January 2022 to December 2022 increased by 33.1% compared with the corresponding index of the 12-month period from January 2021 to December 2021 (Table 13).



Information on methodological issues:

Division of Business Statistics
Section of Manufacture-Construction Indices and Industrial Products
Head of the Section : Diamantaki Aikaterini
Tel: +30 213 135 2056
E-mail: a.diamantaki@statistics.gr

Information on data provision:

Tel: +30 213 135 2022, 2308, 2310
E-mail: data.dissem@statistics.gr

Evolution of the Overall Turnover Index in Industry in December 2023

I. Annual changes of the Overall Turnover Index in Industry: December 2023/December 2022

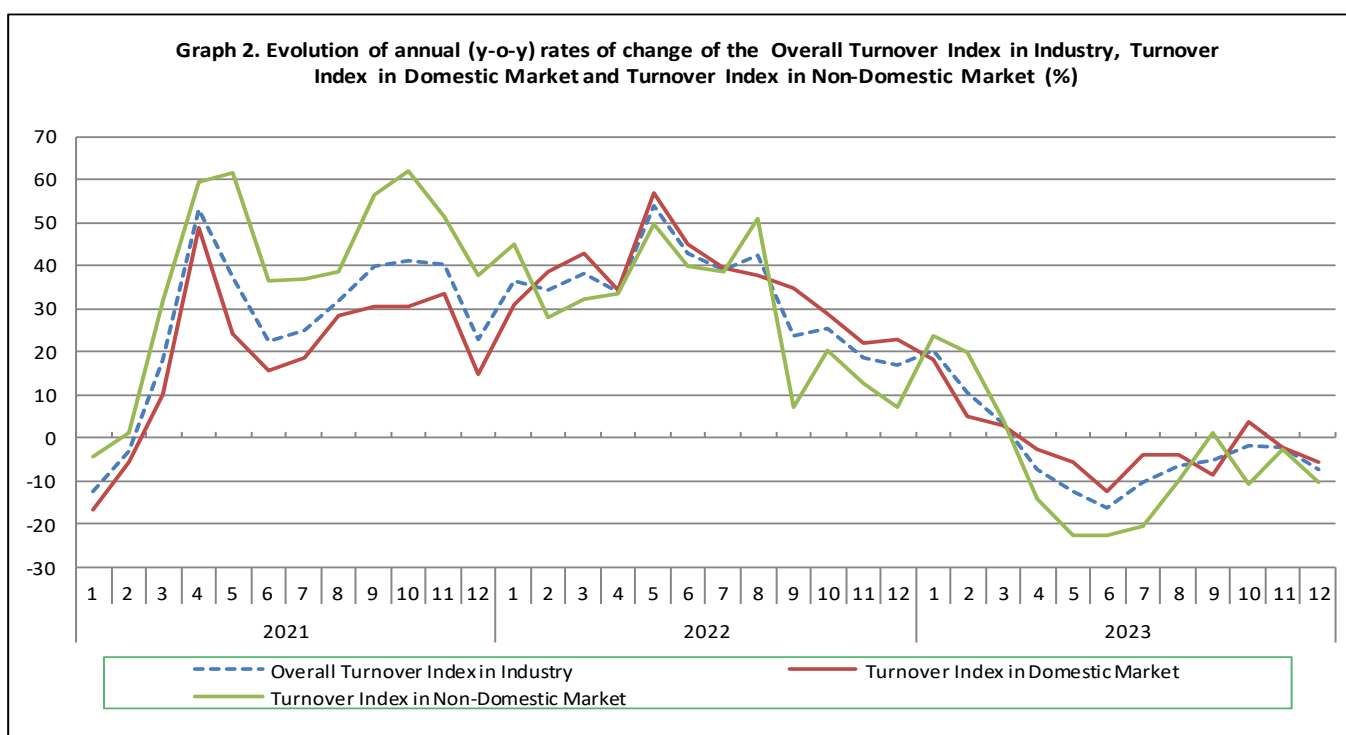
The 7.2% decrease in the Overall Turnover Index in Industry in December 2023, compared with the corresponding index in December 2022, was due to the following:

1. Changes in the sub-indices of the industrial sections (Table 1):

- The Turnover Index in Manufacturing decreased by 7.4%. The decrease was mainly the result of the annual changes of the sub-indices in the following 2-digit divisions: coke and refined petroleum products, tobacco products, wearing apparel, paper and paper products.
- The Turnover Index in Mining and quarrying increased by 15.2%. The increase was the result of the annual changes of the sub-indices in the following 2-digit divisions: mining of metal ores, other mining and quarrying products.

2. Changes in the sub-indices in Domestic and Non-Domestic Markets:

- The Turnover Index in Industry in Non-Domestic Market decreased by 10.3% (Table 3).
- The Turnover Index in Industry in Domestic Market decreased by 5.5% (Table 2).



II. Annual changes of the Turnover Index in Industry in Domestic Market: December 2023/December 2022

The 5.5% decrease of the Turnover Index in Industry in Domestic Market in December 2023, compared with December 2022, is due to the annual changes in the sub-indices of the following industrial sections (Table 2):

- The Turnover Index in Manufacturing decreased by 5.6%. The decrease was mainly the result of the annual changes of the sub-indices in the following 2-digit divisions: coke and refined petroleum products, basic pharmaceutical products and pharmaceutical preparations, paper and paper products.
- The Turnover Index in Mining and quarrying increased by 7.2%. The increase was the result of the annual changes of the sub-indices in the following 2-digit divisions: mining of metal ores, other mining and quarrying products.

III. Annual changes of the Turnover Index in Industry in Non-Domestic Market: December 2023/December 2022

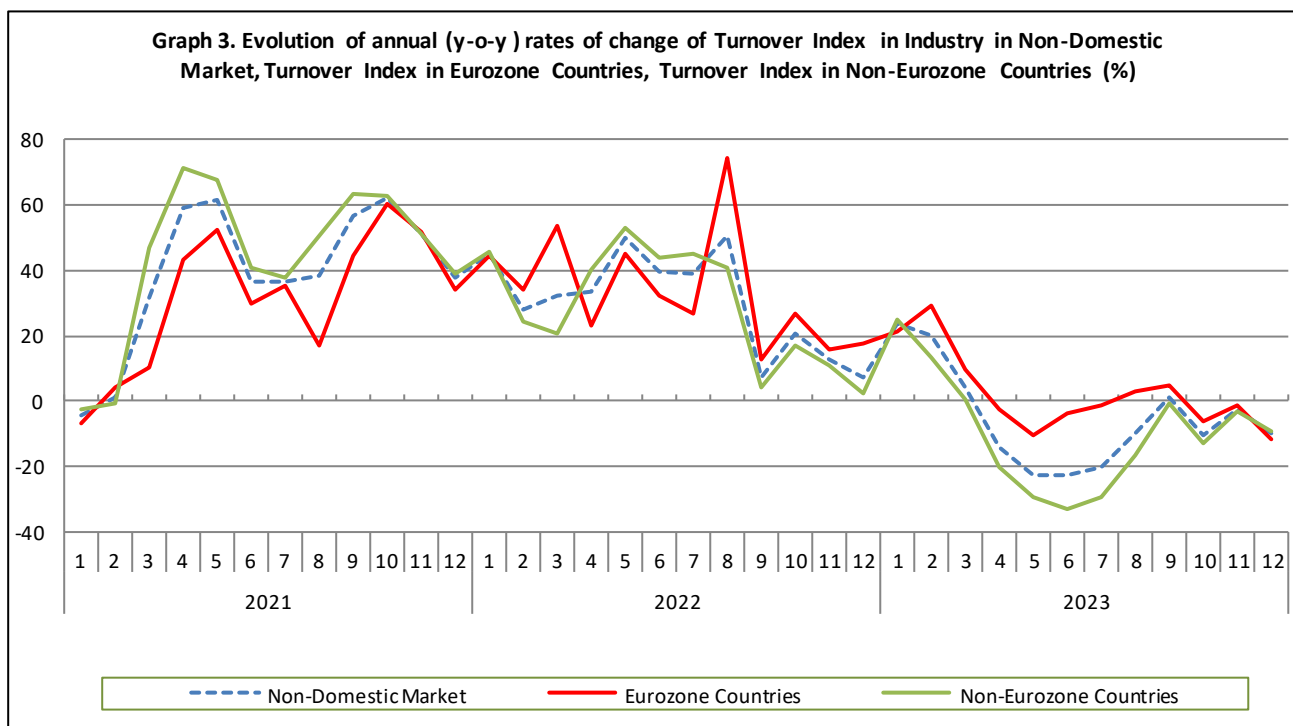
The 10.3% decrease of the Turnover Index in Industry in Non-Domestic Market in December 2023, compared with December 2022, was due to the following:

1. Changes in the sub-indices of the industrial sections (Table 3):

- The Turnover Index in Manufacturing decreased by 10.7%. The decrease was mainly the result of the annual changes of the sub-indices in the following 2-digit divisions: computers, electronic and optical products, wearing apparel, tobacco products, machinery and equipment n.e.c., coke and refined petroleum products.
- The Turnover Index in Mining and quarrying increased by 21.7%. The increase was mainly the result of the annual changes of the sub-indices in the following 2-digit divisions: mining of coal and lignite - extraction of crude petroleum and natural gas - mining support service activities, other mining and quarrying products.

2. Changes in the sub-indices in Eurozone and Non-Eurozone countries:

- The Turnover Index in Industry in Eurozone countries decreased by 12.1% (Table 4).
- The Turnover Index in Industry in Non-Eurozone countries decreased by 9.4% (Table 5).



IV. Monthly changes of the Overall Turnover Index in Industry: December 2023/ November 2023

The 6.3% decrease of the Overall Turnover Index in Industry in December 2023, compared with the corresponding index in November 2023, was due to the following:

1. Changes in the sub-indices of industrial sections (Table 6):

- The Turnover Index in Manufacturing decreased by 6.6%.
- The Turnover Index in Mining and quarrying increased by 20.1%.

2. Changes in the sub-indices in Domestic and Non-Domestic Market:

- The Turnover Index in Industry in Non-Domestic Market decreased by 12.8% (Table 8).
- The Turnover Index in Industry in Domestic Market decreased by 2.5% (Table 7).

Table 1. Annual rates of change of the Turnover Index in Industry: Total Market
Base year: 2015=100.0

Code	Division	Weights	December			Rate of change (%)	
			2023*	2022	2021	2023/2022	2022/2021
OVERALL INDEX			156.88	169.11	144.88	-7.2	16.7
B	MINING AND QUARRYING	100.00	139.70	121.31	136.22	15.2	-10.9
05-06-09	Mining of coal and lignite - Extraction of crude petroleum and natural gas - Mining support service activities	21.19	22.91	43.94	15.32	-47.9	186.8
07	Mining of metal ores	17.56	261.47	215.39	342.36	21.4	-37.1
08	Other mining and quarrying products	61.25	145.19	121.11	118.93	19.9	1.8
C MANUFACTURING			157.11	169.75	145.00	-7.4	17.1
10	Food	23.39	132.90	135.57	115.09	-2.0	17.8
11	Beverages	3.57	125.88	121.66	100.79	3.5	20.7
12	Tobacco products	1.19	195.90	226.66	127.16	-13.6	78.3
13	Textiles	1.28	102.34	114.07	122.88	-10.3	-7.2
14	Wearing apparel	1.80	87.18	100.55	98.63	-13.3	1.9
15	Leather and related products	0.34	96.86	81.72	87.33	18.5	-6.4
16	Wood and products of wood and cork, except furniture	0.72	166.14	154.62	162.41	7.4	-4.8
17	Paper and paper products	2.44	130.01	149.36	130.66	-13.0	14.3
18	Printing and reproduction of recorded products	1.17	135.20	125.37	122.81	7.8	2.1
19	Coke and refined petroleum products	28.73	159.09	197.08	159.10	-19.3	23.9
20	Chemicals and chemical products	4.43	160.33	164.30	138.75	-2.4	18.4
21	Basic pharmaceutical products and pharmaceutical preparations	3.67	208.41	229.61	179.91	-9.2	27.6
22	Rubber and plastic products	3.47	136.06	133.01	139.05	2.3	-4.3
23	Other non-metallic mineral products	3.31	175.94	157.72	133.20	11.6	18.4
24	Basic metals	7.19	155.94	168.96	167.74	-7.7	0.7
25	Fabricated metal products, except machinery and equipment	4.51	164.91	153.95	147.26	7.1	4.5
26	Computers, electronic and optical products	0.78	308.29	394.67	292.44	-21.9	35.0
27	Electrical equipment	2.65	282.48	278.39	220.90	1.5	26.0
28	Machinery and equipment n.e.c.	1.56	197.07	199.54	169.90	-1.2	17.4
29	Motor vehicles, trailers and semi-trailers	0.23	309.39	227.27	338.10	36.1	-32.8
30	Other transport equipment	0.52	112.15	96.10	134.91	16.7	-28.8
31	Furniture	0.97	197.80	167.65	164.62	18.0	1.8
32	Other manufacturing	0.66	152.84	143.27	136.33	6.7	5.1
33	Repair and installation of machinery and equipment	1.42	226.54	198.95	168.02	13.9	18.4
MAIN INDUSTRIAL GROUPINGS							
1	Energy	28.57	158.06	195.98	158.01	-19.3	24.0
2	Intermediate goods	28.29	162.71	168.03	153.51	-3.2	9.5
3	Capital goods	7.00	208.33	193.96	182.71	7.4	6.2
4	Consumer Durables	1.86	188.93	188.25	143.84	0.4	30.9
5	Consumer Non-Durables	34.28	138.84	141.48	119.15	-1.9	18.7

* Provisional data

Note: The indices and the percentage changes are rounded up to two and one decimal digits, respectively, when published.

Table 2. Annual rates of change of the Turnover Index in Industry: Domestic Market

Base year: 2015=100.0

Code	Division	Weights	December			Rate of change (%)	
			2023*	2022	2021	2023/2022	2022/2021
OVERALL INDEX			154.59	163.64	133.09	-5.5	23.0
B	MINING AND QUARRYING	100.00	103.72	96.72	83.71	7.2	15.5
05-06-09	Mining of coal and lignite - Extraction of crude petroleum and natural gas - Mining support service activities	31.66	21.87	51.56	18.11	-57.6	184.7
07	Mining of metal ores	12.83	81.89	63.52	85.81	28.9	-26.0
08	Other mining and quarrying products	55.50	155.45	130.16	120.65	19.4	7.9
C	MANUFACTURING	100.00	155.18	164.42	133.66	-5.6	23.0
10	Food	28.50	124.96	123.48	107.47	1.2	14.9
11	Beverages	4.86	124.37	119.93	101.09	3.7	18.6
12	Tobacco products	0.51	274.51	239.92	213.26	14.4	12.5
13	Textiles	1.11	103.63	112.50	120.68	-7.9	-6.8
14	Wearing apparel	1.77	104.65	112.05	102.20	-6.6	9.6
15	Leather and related products	0.41	96.60	90.68	93.09	6.5	-2.6
16	Wood and products of wood and cork, except furniture	0.96	167.65	154.22	161.17	8.7	-4.3
17	Paper and paper products	3.12	127.06	144.75	127.33	-12.2	13.7
18	Printing and reproduction of recorded products	1.63	122.76	115.77	114.95	6.0	0.7
19	Coke and refined petroleum products	24.90	147.51	196.80	128.72	-25.0	52.9
20	Chemicals and chemical products	4.90	172.37	180.67	121.18	-4.6	49.1
21	Basic pharmaceutical products and pharmaceutical preparations	3.85	177.24	215.13	157.77	-17.6	36.4
22	Rubber and plastic products	3.31	144.61	135.74	137.78	6.5	-1.5
23	Other non-metallic mineral products	3.31	199.78	174.23	150.83	14.7	15.5
24	Basic metals	3.49	190.94	191.15	198.42	-0.1	-3.7
25	Fabricated metal products, except machinery and equipment	4.25	215.97	192.20	187.01	12.4	2.8
26	Computers, electronic and optical products	0.40	301.71	232.27	261.73	29.9	-11.3
27	Electrical equipment	2.24	336.33	306.00	235.18	9.9	30.1
28	Machinery and equipment n.e.c.	1.46	219.03	202.65	190.10	8.1	6.6
29	Motor vehicles, trailers and semi-trailers	0.27	357.80	257.97	397.23	38.7	-35.1
30	Other transport equipment	0.58	62.75	65.11	106.41	-3.6	-38.8
31	Furniture	1.35	192.07	164.05	157.73	17.1	4.0
32	Other manufacturing	0.88	150.74	141.16	134.74	6.8	4.8
33	Repair and installation of machinery and equipment	1.92	242.90	214.84	181.13	13.1	18.6
MAIN INDUSTRIAL GROUPINGS							
1	Energy	24.89	146.20	195.42	127.58	-25.2	53.2
2	Intermediate goods	25.73	177.94	176.30	153.20	0.9	15.1
3	Capital goods	7.19	241.57	206.75	205.01	16.8	0.8
4	Consumer Durables	2.31	154.71	142.80	130.44	8.3	9.5
5	Consumer Non-Durables	39.88	129.07	129.09	110.74	0.0	16.6

* Provisional data

Note: The indices and the percentage changes are rounded up to two and one decimal digits, respectively, when published.

Table 3. Annual rates of change of the Turnover Index in Industry: Non-Domestic Market

Base year: 2015=100.0

Code	Division	Weights	December			Rate of change (%)	
			2023*	2022	2021	2023/2022	2022/2021
OVERALL INDEX			161.39	179.86	168.12	-10.3	7.0
B	MINING AND QUARRYING	100.00	186.66	153.41	204.73	21.7	-25.1
05-06-09	Mining of coal and lignite - Extraction of crude petroleum and natural gas - Mining support service activities	7.53	28.60	2.12	0.00	1246.7	-
07	Mining of metal ores	23.74	388.19	322.55	523.39	20.4	-38.4
08	Other mining and quarrying products	68.74	134.37	111.57	117.12	20.4	-4.7
C MANUFACTURING		100.00	160.95	180.33	167.48	-10.7	7.7
10	Food	13.27	166.71	187.01	147.49	-10.9	26.8
11	Beverages	1.01	140.31	138.16	97.96	1.6	41.0
12	Tobacco products	2.53	164.21	221.32	92.44	-25.8	139.4
13	Textiles	1.61	100.56	116.22	125.91	-13.5	-7.7
14	Wearing apparel	1.86	54.26	78.88	91.91	-31.2	-14.2
15	Leather and related products	0.19	97.96	43.20	62.55	126.8	-30.9
16	Wood and products of wood and cork, except furniture	0.24	154.16	157.78	172.25	-2.3	-8.4
17	Paper and paper products	1.11	146.42	175.06	149.16	-16.4	17.4
18	Printing and reproduction of recorded products	0.26	290.23	244.89	220.69	18.5	11.0
19	Coke and refined petroleum products	36.32	174.82	197.45	200.40	-11.5	-1.5
20	Chemicals and chemical products	3.50	127.00	118.96	187.37	6.8	-36.5
21	Basic pharmaceutical products and pharmaceutical preparations	3.30	280.42	263.08	231.04	6.6	13.9
22	Rubber and plastic products	3.79	121.24	128.27	141.24	-5.5	-9.2
23	Other non-metallic mineral products	3.31	128.67	124.98	98.24	3.0	27.2
24	Basic metals	14.54	139.30	158.41	153.16	-12.1	3.4
25	Fabricated metal products, except machinery and equipment	5.03	79.36	89.87	80.67	-11.7	11.4
26	Computers, electronic and optical products	1.52	311.71	479.18	308.42	-34.9	55.4
27	Electrical equipment	3.44	212.91	242.71	202.45	-12.3	19.9
28	Machinery and equipment n.e.c.	1.76	160.99	194.43	136.71	-17.2	42.2
29	Motor vehicles, trailers and semi-trailers	0.14	120.89	107.73	107.84	12.2	-0.1
30	Other transport equipment	0.40	252.91	184.39	216.14	37.2	-14.7
31	Furniture	0.21	270.82	213.58	252.41	26.8	-15.4
32	Other manufacturing	0.22	169.14	159.56	148.69	6.0	7.3
33	Repair and installation of machinery and equipment	0.43	82.81	59.44	52.90	39.3	12.4
MAIN INDUSTRIAL GROUPINGS							
1	Energy	35.82	174.29	196.74	199.67	-11.4	-1.5
2	Intermediate goods	33.33	139.54	155.45	153.98	-10.2	1.0
3	Capital goods	6.62	137.24	166.62	135.01	-17.6	23.4
4	Consumer Durables	0.98	348.19	399.78	206.21	-12.9	93.9
5	Consumer Non-Durables	23.25	171.87	183.36	147.59	-6.3	24.2

* Provisional data

Note: The indices and the percentage changes are rounded up to two and one decimal digits, respectively, when published.

Table 4. Annual rates of change of the Turnover Index in Industry: Eurozone Countries

Base year: 2015=100.0

Code	Sections and main groupings	December			Rate of change (%)	
		2023*	2022	2021	2023/2022	2022/2021
OVERALL INDEX		149.76	170.38	144.92	-12.1	17.6
INDUSTRIAL SECTIONS						
B	MINING AND QUARRYING	195.70	220.46	210.08	-11.2	4.9
C	MANUFACTURING	148.84	169.38	143.61	-12.1	17.9
MAIN INDUSTRIAL GROUPINGS						
1	Energy	152.86	156.33	136.06	-2.2	14.9
2	Intermediate goods	131.92	168.40	159.50	-21.7	5.6
3	Capital goods	161.20	158.31	127.63	1.8	24.0
4	Consumer Durables	235.15	442.78	179.88	-46.9	146.2
5	Consumer Non-Durables	163.41	174.74	135.68	-6.5	28.8

* Provisional data

Table 5. Annual rates of change of the Turnover Index in Industry: Non-Eurozone Countries

Base year: 2015=100.0

Code	Sections and main groupings	December			Rate of change (%)	
		2023*	2022	2021	2023/2022	2022/2021
OVERALL INDEX		167.58	184.90	180.45	-9.4	2.5
INDUSTRIAL SECTIONS						
B	MINING AND QUARRYING	180.72	109.39	201.22	65.2	-45.6
C	MANUFACTURING	167.37	186.12	180.12	-10.1	3.3
MAIN INDUSTRIAL GROUPINGS						
1	Energy	180.46	208.38	217.99	-13.4	-4.4
2	Intermediate goods	144.50	147.01	150.39	-1.7	-2.2
3	Capital goods	129.12	169.44	137.51	-23.8	23.2
4	Consumer Durables	426.25	370.09	224.40	15.2	64.9
5	Consumer Non-Durables	180.11	191.75	159.18	-6.1	20.5

* Provisional data

Note: The indices and the percentage changes are rounded up to two and one decimal digits, respectively, when published.

Table 6. Monthly rate of change of the Turnover Index in Industry: Total Market

Base year: 2015=100.0

Code	Sections and main groupings	December 2023*	November 2023**	Rate of change (%) Dec. 2023/ Nov. 2023
OVERALL INDEX		156.88	167.50	-6.3
INDUSTRIAL SECTIONS				
B	MINING AND QUARRYING	139.70	116.33	20.1
C	MANUFACTURING	157.11	168.19	-6.6
MAIN INDUSTRIAL GROUPINGS				
1	Energy	158.06	176.09	-10.2
2	Intermediate goods	162.71	176.03	-7.6
3	Capital goods	208.33	163.40	27.5
4	Consumer Durables	188.93	206.89	-8.7
5	Consumer Non-Durables	138.84	152.00	-8.7

Table 7. Monthly rate of change of the Turnover Index in Industry: Domestic Market

Base year: 2015=100.0

Code	Sections and main groupings	December 2023*	November 2023**	Rate of change (%) Dec. 2023/ Nov. 2023
OVERALL INDEX		154.59	158.58	-2.5
INDUSTRIAL SECTIONS				
B	MINING AND QUARRYING	103.72	114.82	-9.7
C	MANUFACTURING	155.18	159.09	-2.5
MAIN INDUSTRIAL GROUPINGS				
1	Energy	146.20	156.93	-6.8
2	Intermediate goods	177.94	186.33	-4.5
3	Capital goods	241.57	176.13	37.2
4	Consumer Durables	154.71	158.81	-2.6
5	Consumer Non-Durables	129.07	138.53	-6.8

Table 8. Monthly rate of change of the Turnover Index in Industry: Non-Domestic Market

Base year: 2015=100.0

Code	Sections and main groupings	December 2023*	November 2023**	Rate of change (%) Dec. 2023/ Nov. 2023
OVERALL INDEX		161.39	185.07	-12.8
INDUSTRIAL SECTIONS				
B	MINING AND QUARRYING	186.66	118.29	57.8
C	MANUFACTURING	160.95	186.24	-13.6
MAIN INDUSTRIAL GROUPINGS				
1	Energy	174.29	202.31	-13.8
2	Intermediate goods	139.54	160.37	-13.0
3	Capital goods	137.24	136.16	0.8
4	Consumer Durables	348.19	430.70	-19.2
5	Consumer Non-Durables	171.87	197.50	-13.0

* Provisional data ** Revised data

Note: The indices and the percentage changes are rounded up to two and one decimal digits, respectively, when published.

Table 9. Monthly rate of change of the Turnover Index in Industry: Eurozone Countries

Base year: 2015=100.0

Code	Sections and main groupings	December 2023*	November 2023**	Rate of change (%) Dec. 2023/ Nov. 2023
OVERALL INDEX		149.76	195.96	-23.6
INDUSTRIAL SECTIONS				
B	MINING AND QUARRYING	195.70	133.46	46.6
C	MANUFACTURING	148.84	197.21	-24.5
MAIN INDUSTRIAL GROUPINGS				
1	Energy	152.86	211.70	-27.8
2	Intermediate goods	131.92	166.76	-20.9
3	Capital goods	161.20	202.75	-20.5
4	Consumer Durables	235.15	351.51	-33.1
5	Consumer Non-Durables	163.41	212.04	-22.9

* Provisional data ** Revised data

Table 10. Monthly rate of change of the Turnover Index in Industry: Non-Eurozone Countries

Base year: 2015=100.0

Code	Sections and main groupings	December 2023*	November 2023**	Rate of change (%) Dec. 2023/ Nov. 2023
OVERALL INDEX		167.58	179.28	-6.5
INDUSTRIAL SECTIONS				
B	MINING AND QUARRYING	180.72	108.33	66.8
C	MANUFACTURING	167.37	180.43	-7.2
MAIN INDUSTRIAL GROUPINGS				
1	Energy	180.46	199.60	-9.6
2	Intermediate goods	144.50	156.21	-7.5
3	Capital goods	129.12	113.59	13.7
4	Consumer Durables	426.25	485.39	-12.2
5	Consumer Non-Durables	180.11	183.34	-1.8

* Provisional data ** Revised data

Note: The indices and the percentage changes are rounded up to two and one decimal digits, respectively, when published.

Table 11. Evolution of the Turnover Index in Industry (y-o-y changes): Total Market

Base year: 2015=100.0

Year and month	Overall Index (Total Market)		Turnover Index in Industry in Domestic Market		Turnover Index in Industry in Non-Domestic Market	
	Index	Annual rate of change (%)	Index	Annual rate of change (%)	Index	Annual rate of change (%)
2022: 12	169.11	16.7	163.64	23.0	179.86	7.0
2023*: 1	142.91	20.3	124.67	17.9	178.85	23.6
2	150.12	10.4	134.72	4.7	180.45	19.8
3	172.73	3.4	156.93	2.8	203.86	4.2
4	151.46	-7.4	145.25	-2.9	163.69	-14.3
5	161.08	-12.5	156.63	-5.7	169.85	-22.6
6	163.38	-16.4	162.13	-12.6	165.84	-22.9
7	173.49	-10.3	172.00	-4.0	176.42	-20.4
8	153.93	-6.4	146.89	-4.2	167.80	-10.0
9	169.64	-5.2	162.07	-8.6	184.54	1.1
10	170.96	-1.9	167.98	3.5	176.83	-10.7
11	167.50	-2.5	158.58	-2.5	185.07	-2.6
12	156.88	-7.2	154.59	-5.5	161.39	-10.3

*Provisional data

Table 12. Evolution of the Turnover Index in Industry (y-o-y changes): Non-Domestic Market

Base year: 2015=100.0

Year and month	Overall Index (Non-Domestic Market)		Turnover Index in Industry in Eurozone Countries		Turnover Index in Industry in Non-Eurozone Countries	
	Index	Annual rate of change (%)	Index	Annual rate of change (%)	Index	Annual rate of change (%)
2022: 12	179.86	7.0	170.38	17.6	184.90	2.5
2023*: 1	178.85	23.6	190.13	21.2	172.86	25.1
2	180.45	19.8	224.14	29.2	157.22	13.6
3	203.86	4.2	248.31	9.7	180.23	0.6
4	163.69	-14.3	186.35	-2.7	151.64	-20.5
5	169.85	-22.6	210.40	-10.5	148.30	-29.8
6	165.84	-22.9	210.62	-3.7	142.04	-33.3
7	176.42	-20.4	205.96	-1.4	160.72	-29.6
8	167.80	-10.0	192.54	3.1	154.66	-16.9
9	184.54	1.1	192.63	4.9	180.24	-0.9
10	176.83	-10.7	202.70	-6.3	163.09	-13.3
11	185.07	-2.6	195.96	-1.5	179.28	-3.2
12	161.39	-10.3	149.76	-12.1	167.58	-9.4

*Provisional data

Note: The indices and the percentage changes are rounded up to two and one decimal digits, respectively, when published.

Table 13. Average indices and rates of change (%) of the 12-month periods of Turnover Index in Industry: Total Market
Base year: 2015=100.0

Code	Division	Average Indices of 12-month periods			Rate of change (%)	
		Jan. 2023*- Dec. 2023*	Jan. 2022- Dec. 2022	Jan. 2021- Dec. 2021	2023/2022	2022/2021
OVERALL INDEX		161.17	168.09	126.28	-4.1	33.1
B	MINING AND QUARRYING	118.60	106.99	104.18	10.9	2.7
05-06-09	Mining of coal and lignite - Extraction of crude petroleum and natural gas - Mining support service activities	36.50	24.21	28.35	50.8	-14.6
07	Mining of metal ores	193.34	165.78	180.51	16.6	-8.2
08	Other mining and quarrying products	125.58	118.77	108.53	5.7	9.4
C	MANUFACTURING	161.75	168.92	126.58	-4.2	33.5
10	Food	145.01	136.48	113.03	6.3	20.7
11	Beverages	155.41	138.60	115.77	12.1	19.7
12	Tobacco products	218.48	183.57	147.37	19.0	24.6
13	Textiles	124.99	128.02	120.22	-2.4	6.5
14	Wearing apparel	89.00	91.90	82.89	-3.2	10.9
15	Leather and related products	90.14	79.79	70.31	13.0	13.5
16	Wood and products of wood and cork, except furniture	141.20	140.56	117.55	0.5	19.6
17	Paper and paper products	150.18	153.13	118.95	-1.9	28.7
18	Printing and reproduction of recorded products	116.06	116.93	97.73	-0.7	19.6
19	Coke and refined petroleum products	167.96	199.80	119.83	-15.9	66.7
20	Chemicals and chemical products	160.17	187.07	140.62	-14.4	33.0
21	Basic pharmaceutical products and pharmaceutical preparations	248.33	212.16	185.16	17.0	14.6
22	Rubber and plastic products	146.15	152.77	133.69	-4.3	14.3
23	Other non-metallic mineral products	166.34	147.98	122.35	12.4	20.9
24	Basic metals	186.96	217.56	163.72	-14.1	32.9
25	Fabricated metal products, except machinery and equipment	140.32	136.87	123.45	2.5	10.9
26	Computers, electronic and optical products	251.25	241.46	192.43	4.1	25.5
27	Electrical equipment	224.15	220.13	188.81	1.8	16.6
28	Machinery and equipment n.e.c.	138.82	139.48	124.33	-0.5	12.2
29	Motor vehicles, trailers and semi-trailers	193.95	168.85	133.97	14.9	26.0
30	Other transport equipment	88.52	86.67	84.42	2.1	2.7
31	Furniture	160.25	148.54	124.23	7.9	19.6
32	Other manufacturing	138.30	129.71	112.52	6.6	15.3
33	Repair and installation of machinery and equipment	133.15	117.21	103.90	13.6	12.8
MAIN INDUSTRIAL GROUPINGS						
1	Energy	167.02	198.49	119.17	-15.9	66.6
2	Intermediate goods	165.69	177.02	141.34	-6.4	25.2
3	Capital goods	146.65	138.76	124.17	5.7	11.7
4	Consumer Durables	165.68	150.07	118.93	10.4	26.2
5	Consumer Non-Durables	155.30	142.35	120.60	9.1	18.0

*Provisional data

Note: The indices and the percentage changes are rounded up to two and one decimal digits, respectively, when published.

METHODOLOGICAL NOTES

Generally	The Industrial Turnover Index is an indicator of an enterprise's business cycle showing the monthly evolution of the market of goods and services in industry. The first compilation of the Turnover Index was completed by the Hellenic Statistical Authority in 2006, with base year 2000=100.0 and is compiled from 2000 onwards.
Purpose of the index	The purpose of this index is to measure the monthly activity of the industrial sector in terms of value. Turnover comprises the totals invoiced by the observation units during the reference period and corresponds to the market sales of goods or services supplied to third parties. The purposes and the characteristics of the Turnover Index apply, as well, to the indices for the distinction between domestic and non-domestic turnover.
Legal Framework	The compilation and publication of the Turnover Index is based on the framework of the implementation of Council Regulation (EC) No 1165/1998 concerning short-term statistics (STS-R), as well as Regulation (EC) No 1158/2005 of the European Parliament and of the Council amending Council Regulation (EC) No 1165/1998. Furthermore, this index is governed by Regulation (EC) No 1893/2006 of the European Parliament and of the Council, by Commission Regulation (EC) No 656/2007, by Regulation (EC) No 451/2008 of the Council, by Regulation (EU) No 2019/2152 of the European Parliament and of the Council on European business statistics, as well as Commission Implementing Regulation (EU) No 2020/1197 laying down technical specifications and arrangements pursuant to Regulation (EU) No 2019/2152.
Reference period	Month.
Base year	2015=100.0.
Revision	The latest revision of the Turnover Index in Industry (base year 2015=100.0) took place in the framework of Council Regulation (EC) No 1165/1998 concerning short-term statistics. In accordance with this regulation the index is revised every five years, in years ending in 0 or 5.
Statistical classifications	At the level of classes of economic activities, the statistical classification of economic activities NACE Rev. 2 of EU was used (Regulation No 1893/2006), while at the level of main industrial groupings, the allocation of two-digit and three-digit NACE Rev. 2 headings to categories of aggregate classification was used, in accordance with Commission Regulation No 656/2007.
Geographical coverage	The index covers the whole Country.
Coverage of economic activities	The Turnover Index in Industry is compiled for all activities listed in Sections B (mining and quarrying) and C (manufacturing) of the NACE Rev. 2 statistical classification.
Computation of the Index	The Turnover Index in Industry is a fixed base index. This index is calculated at a first stage at the four-digit level of economic activity and subsequently, with the implementation of appropriate weighting coefficients, the index is calculated at higher levels (three-level and two-level of economic activity) as well as at the level of Main Industrial Groupings (MIGs).
Publication of data	The Turnover Index in Industry (2015=100.0) is released since August 2019 with June 2019 as first reference month. Data with base year 2015=100.0 are available from January 2000 onwards.
References	More information about the methodology concerning the compilation and calculation of the index and for the time series is available on the website of the Hellenic Statistical Authority (ELSTAT) (http://www.statistics.gr/en/statistics/-/publication/DKT24/).