



HELLENIC REPUBLIC
HELLENIC STATISTICAL AUTHORITY

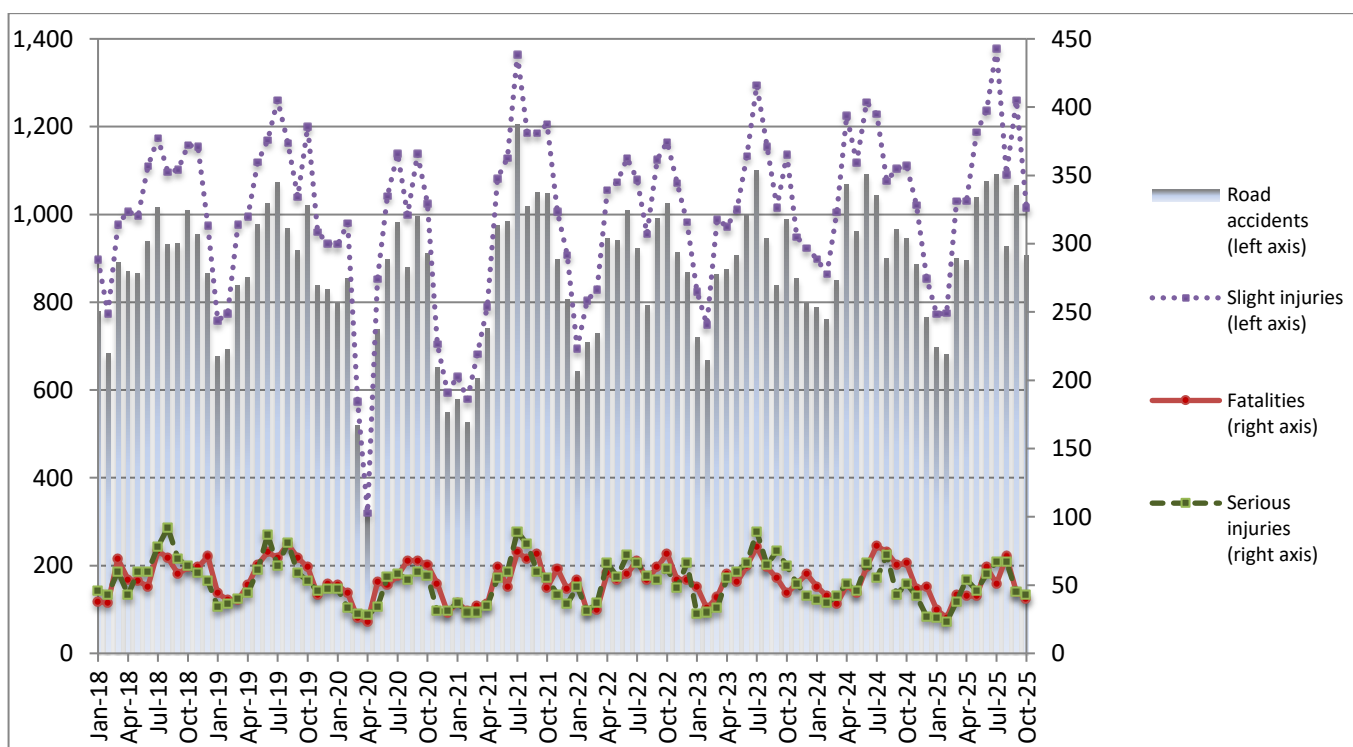
Piraeus, 31 December 2025

ROAD TRAFFIC ACCIDENTS: October 2025

The Hellenic Statistical Authority (ELSTAT) announces provisional¹ data from the survey on “Road Traffic Accidents” for October 2025. In particular, the road traffic accidents which occurred in Greece, resulting in death or injury, decreased by 4.2% in comparison with the corresponding month of 2024 (906 road accidents in October 2025, against 946 road accidents in October 2024).

The casualties of the injury-causing accidents that occurred in October 2025 were as follows: 40 deaths, 43 serious injuries and 1,016 slight injuries. In October 2024 the corresponding figures were: 66 deaths, 51 serious injuries and 1,111 slight injuries. Therefore, road traffic accident casualties in October 2025 decreased by 39.4% for deaths, by 15.7% for serious injuries and by 8.6% for slight injuries.

**Graph 1: Road traffic accidents and casualties,
January 2018 - October 2025**



Provisional data for the period November 2024 – October 2025

Information on methodological issues:

Sectoral Statistics Division
Transport Statistics Section
M. Kloumpas
Tel: +30 213 135 3095
e-mail: m.kloumpas@statistics.gr

Information for data provision:

Tel: +30 213 135 2022, 2308, 2310
e-mail: data.dissem@statistics.gr

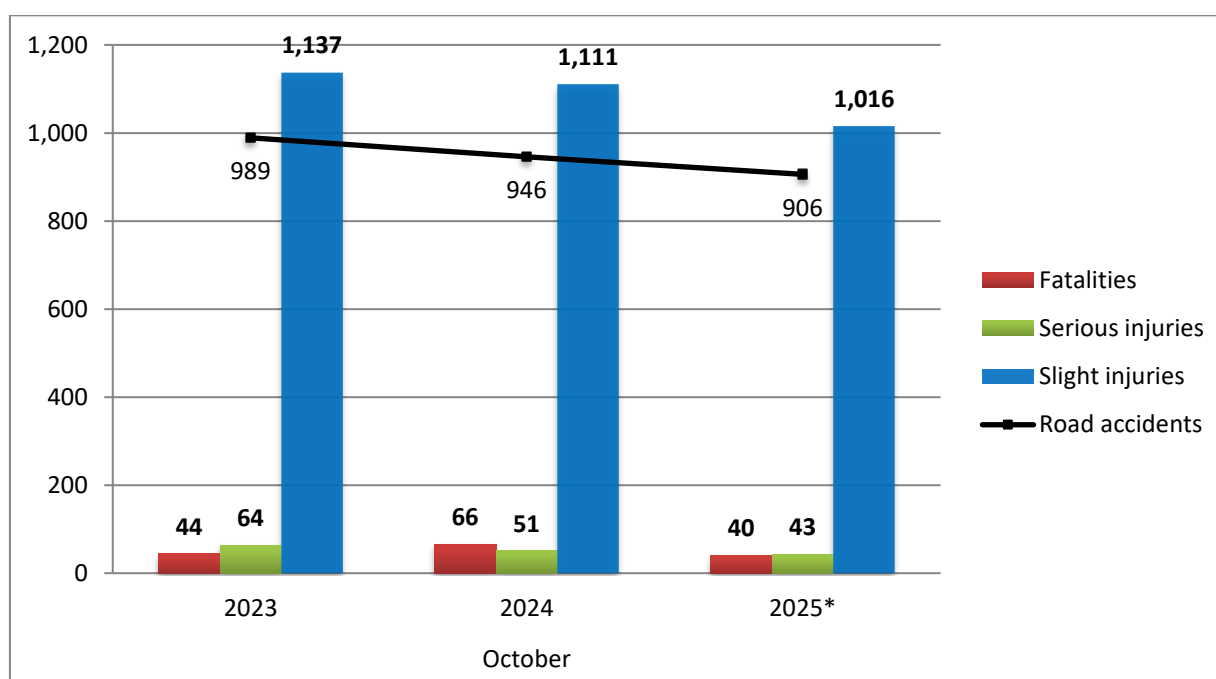
^[1] Data for the reference year is provisional until the finalization of the annual data, which takes place 12 months after the end of the reference year and is published in the corresponding announcement of the following year. During these 12 months the provisional data is updated on the basis of the data of the Road Accident Forms of that year which is transmitted to ELSTAT by Police Authorities (see explanatory notes).

Table 1: Road traffic accidents and casualties, October 2023 - 2025*

	October				
	2023	2024	2024/2023 (%)	2025*	2025*/2024 (%)
Road accidents	989	946	-4.3	906	-4.2
Fatalities	44	66	50.0	40	-39.4
Total injuries	1,201	1,162	-3.2	1,059	-8.9
Serious injuries	64	51	-20.3	43	-15.7
Slight injuries	1,137	1,111	-2.3	1,016	-8.6

* Provisional data

Graph 2: Road traffic accidents and casualties, October 2023 - 2025*



* Provisional data

Table 2: Road traffic accidents and casualties, by Region and Department, October 2024 and 2025*

Region and Department	Road accidents			Fatalities			Serious injuries			Slight injuries		
	2024	2025*	%	2024	2025*	%	2024	2025*	%	2024	2025*	%
Greece total	946	906	-4.2	66	40	-39.4	51	43	-15.7	1,111	1,016	-8.6
Anatoliki Makedonia and Thraki (East Macedonia and Thrace)	26	14	-46.2	5	3	-40.0	6	1	-83.3	27	14	-48.1
Drama	2	4	100.0	0	2		0	1		3	3	
Evros	10	5	-50.0	1	0		4	0		13	7	
Kavala	4	2	-50.0	2	0		0	0		4	2	
Xanthi	4	2	-50.0	0	1		2	0		3	1	
Rodopi	6	1	-83.3	2	0		0	0		4	1	
Kentriki Makedonia (Central Macedonia)	208	192	-7.7	7	3	-57.1	5	4	-20.0	252	223	-11.5
Imathia	3	1	-66.7	2	0		0	0		4	1	
Thessaloniki	186	175	-5.9	4	2		2	1		226	203	
Kilkis	4	3	-25.0	1	0		0	0		4	4	
Pella	4	2	-50.0	0	0		3	2		4	0	
Pieria	0	1	-	0	0		0	1		0	2	
Serres	2	2	0.0	0	1		0	0		2	2	
Chalkidiki	9	8	-11.1	0	0		0	0		12	11	
Dytiki Makedonia (West Macedonia)	7	4	-42.9	1	0	-100.0	1	1	0.0	9	4	-55.6
Grevena	1	1	0.0	0	0		0	0		1	1	
Kastoria	0	1	-	0	0		0	0		0	1	
Kozani	4	1	-75.0	1	0		0	0		6	2	
Florina	2	1	-50.0	0	0		1	1		2	0	
Ipeiros (Epirus)	16	15	-6.3	5	0	-100.0	1	1	0.0	13	18	38.5
Arta	4	5	25.0	0	0		1	1		5	5	
Thesprotia	2	2	0.0	0	0		0	0		2	3	
Ioannina	8	6	-25.0	4	0		0	0		5	8	
Preveza	2	2	0.0	1	0		0	0		1	2	
Thessalia (Thessaly)	18	15	-16.7	3	2	-33.3	2	0	-100.0	24	17	-29.2
Karditsa	6	4	-33.3	0	0		0	0		8	4	
Larissa	6	6	0.0	2	1		1	0		9	8	
Magnissia	4	3	-25.0	0	0		1	0		5	4	
Trikala	2	2	0.0	1	1		0	0		2	1	
Ionian Nisia (Ionian Islands)	10	16	60.0	4	2	-50.0	1	1	0.0	9	21	133.3
Zakynthos	3	3	0.0	1	1		1	0		3	2	
Kerkyra	6	4	-33.3	3	0		0	0		5	4	
Kefallinia	1	4	300.0	0	0		0	1		1	8	
Lefkada	0	5	-	0	1		0	0		0	7	

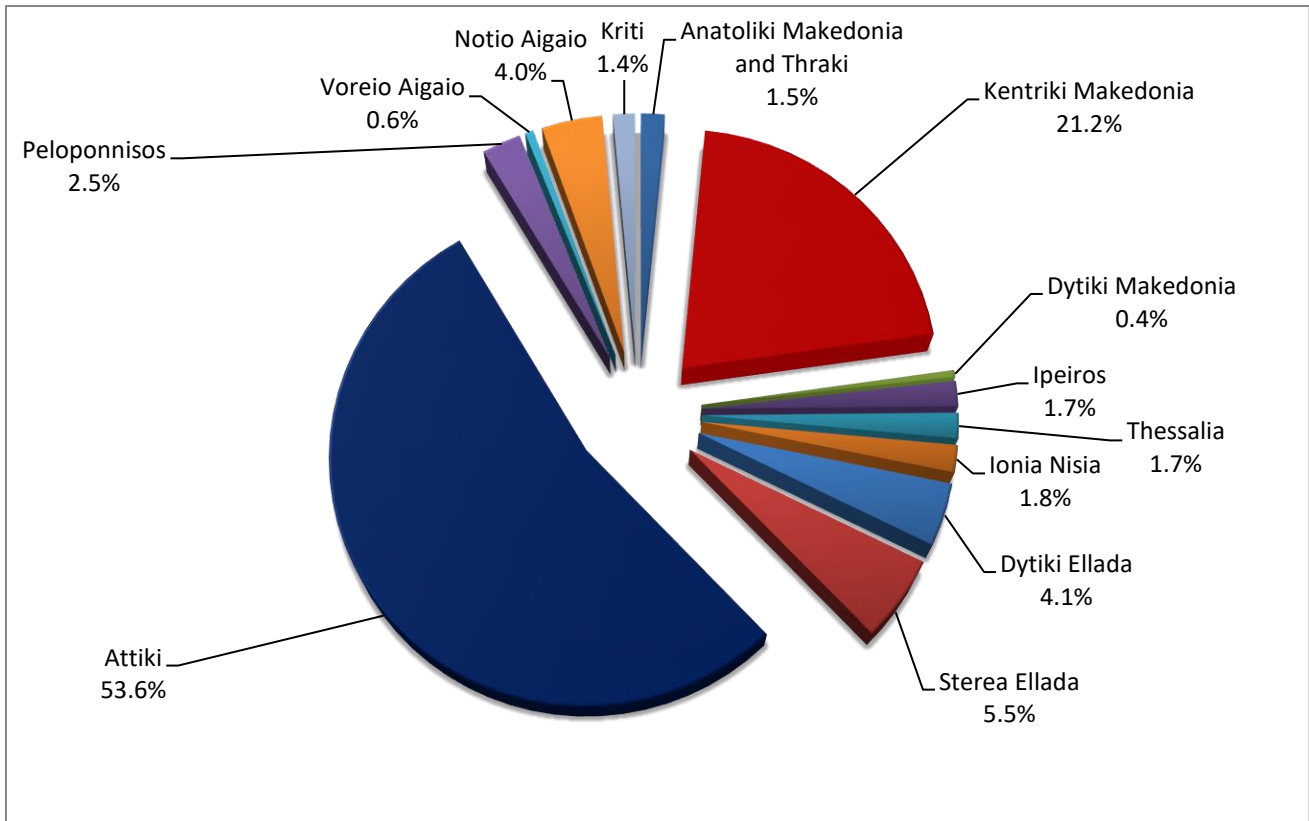
* Provisional data

Table 2: Road traffic accidents and casualties, by Region and Department, October 2024 and 2025*
(Continued)

Region and Department	Road accidents			Fatalities			Serious injuries			Slight injuries		
	2024	2025*	%	2024	2025*	%	2024	2025*	%	2024	2025*	%
Dytiki Ellada (West Greece)	48	37	-22.9	7	1	-85.7	2	5	150.0	66	34	-48.5
Etolia & Akarnania	18	18	0.0	2	0		1	3		24	17	
Achaia	19	12	-36.8	1	0		1	0		31	13	
Ilia	11	7	-36.4	4	1		0	2		11	4	
Stereia Ellada	42	50	19.0	5	6	20.0	7	9	28.6	56	57	1.8
Viotia	3	11	266.7	0	0		0	2		6	16	
Evia	21	22	4.8	1	2		6	7		27	23	
Evrytania	2	2	0.0	0	2		0	0		4	2	
Fthiotida	13	12	-7.7	2	1		0	0		16	12	
Fokida	3	3	0.0	2	1		1	0		3	4	
Attiki (Attica)	477	486	1.9	18	14	-22.2	10	11	10.0	553	545	-1.4
Peloponnisos (Peloponnese)	18	23	27.8	3	1	-66.7	1	6	500.0	21	23	9.5
Argolida	2	3	50.0	1	0		1	1		3	4	
Arkadia	1	4	300.0	0	0		0	0		1	5	
Korinthia	8	4	-50.0	0	0		0	2		12	4	
Lakonia	3	7	133.3	1	0		0	1		2	8	
Messinia	4	5	25.0	1	1		0	2		3	2	
Voreio Aigaio (North Aegean)	18	5	-72.2	1	0	-100.0	1	0	-100.0	20	6	-70.0
Lesvos	13	1	-92.3	1	0		1	0		13	1	
Samos	4	2	-50.0	0	0		0	0		6	3	
Chios	1	2	100.0	0	0		0	0		1	2	
Notio Aigaio (South Aegean)	38	36	-5.3	2	4	100.0	7	4	-42.9	43	36	-16.3
Dodekanissos	28	19	-32.1	1	2		6	4		31	18	
Kyklades	10	17	70.0	1	2		1	0		12	18	
Kriti (Crete)	20	13	-35.0	5	4	-20.0	7	0	-100.0	18	18	0.0
Iraklio	8	6	-25.0	2	2		3	0		11	9	
Lassithi	4	3	-25.0	1	0		1	0		3	3	
Rethymno	3	2	-33.3	2	1		1	0		0	2	
Chania	5	2	-60.0	0	1		2	0		4	4	

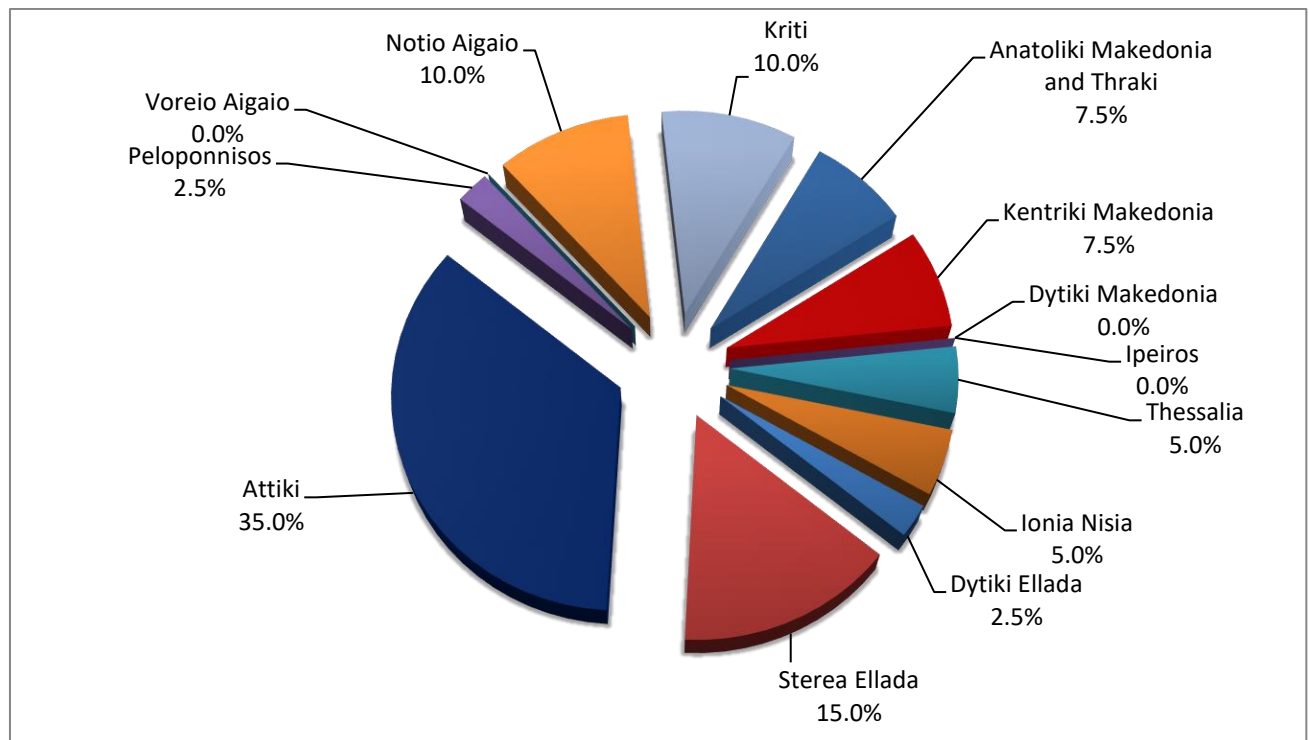
* Provisional data

Graph 3: Road traffic accidents by Region, October 2025 *



* Provisional data

Graph 4: Fatalities by Region, October 2025 *

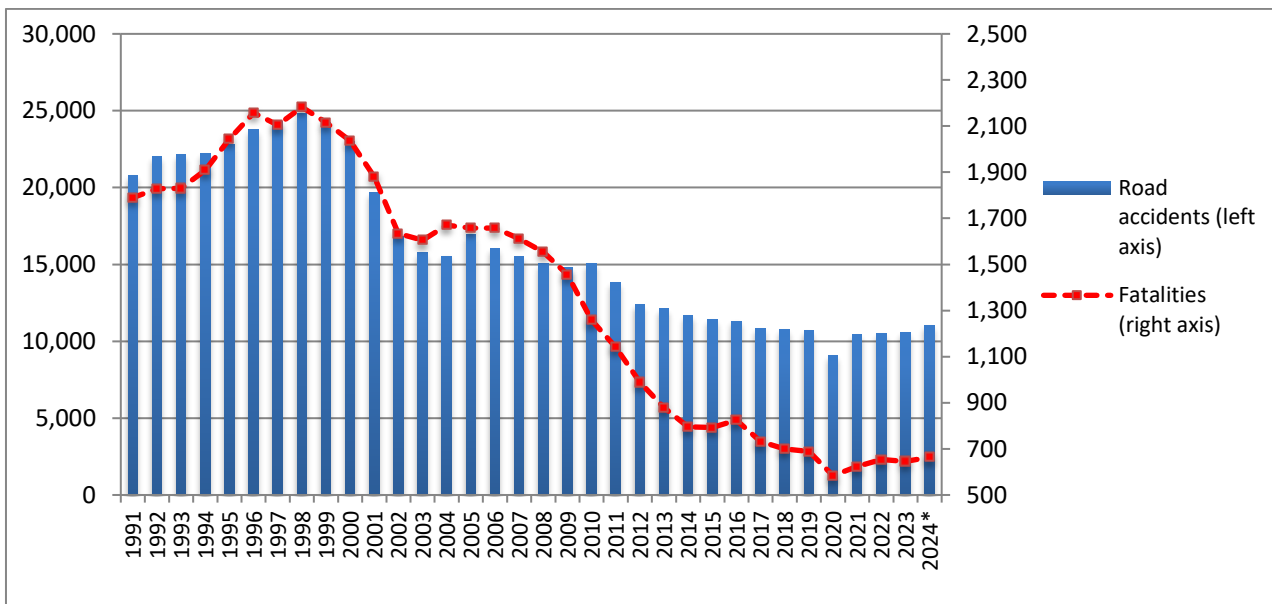


* Provisional data

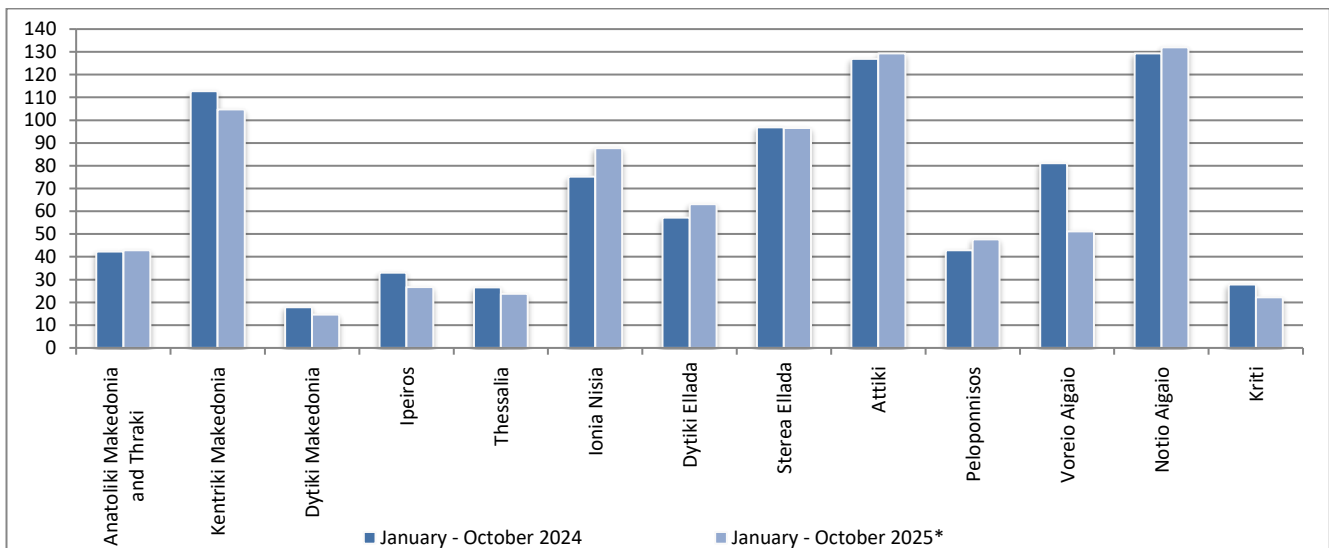
Table 3: Road traffic accidents and casualties for the period January - October 2023,2024 and 2025*

	2023		2024		2025*
	January - October	Total year	January - October	Total year*	January - October
Road Accidents	8,902	10,553	9,371	11,021	9,274
<i>Annual Change (%)</i>			5.3	4.4	-1.0
Fatalities	537	646	568	664	455
<i>Annual Change (%)</i>			5.8	2.8	-19.9
Serious injuries	566	659	502	571	467
<i>Annual Change (%)</i>			-11.3	-13.4	-7.0
Slight injuries	10,283	12,156	10,887	12,762	10,779
<i>Annual Change (%)</i>			5.9	5.0	-1.0

Graph 5: Total road traffic accidents and fatalities, 1991-2024*

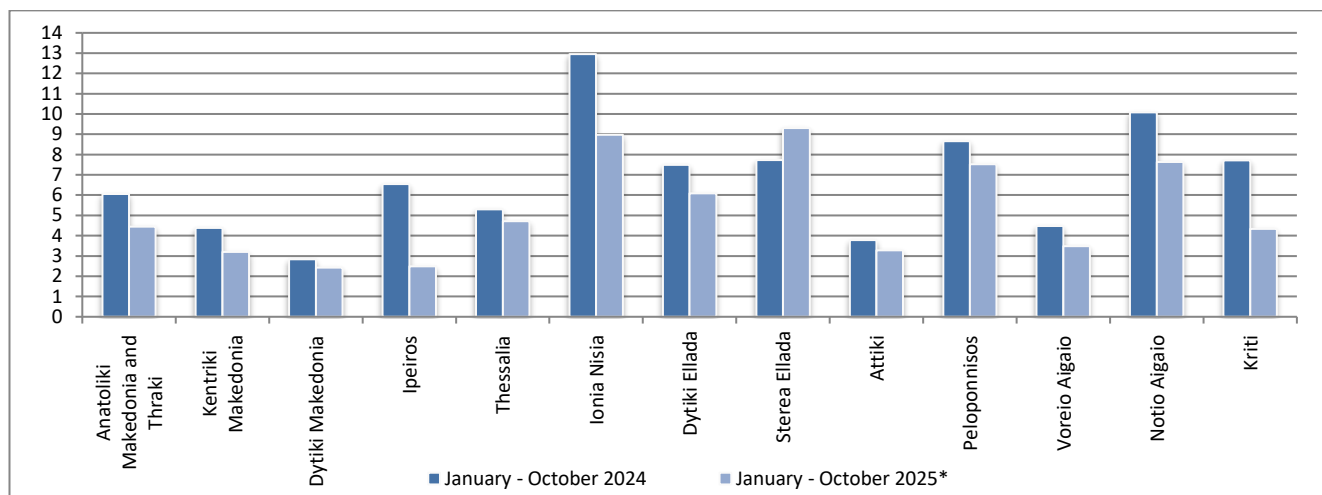


Graph 6: Road traffic accidents per 100,000 inhabitants, for the period January - October 2024 and 2025*

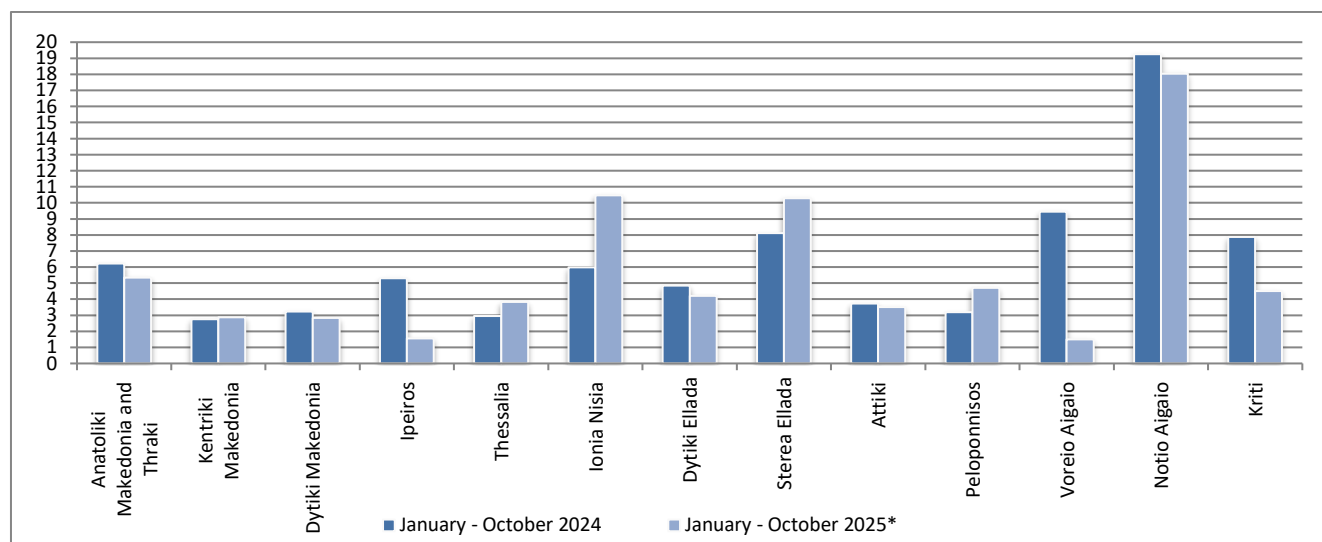


* Provisional data

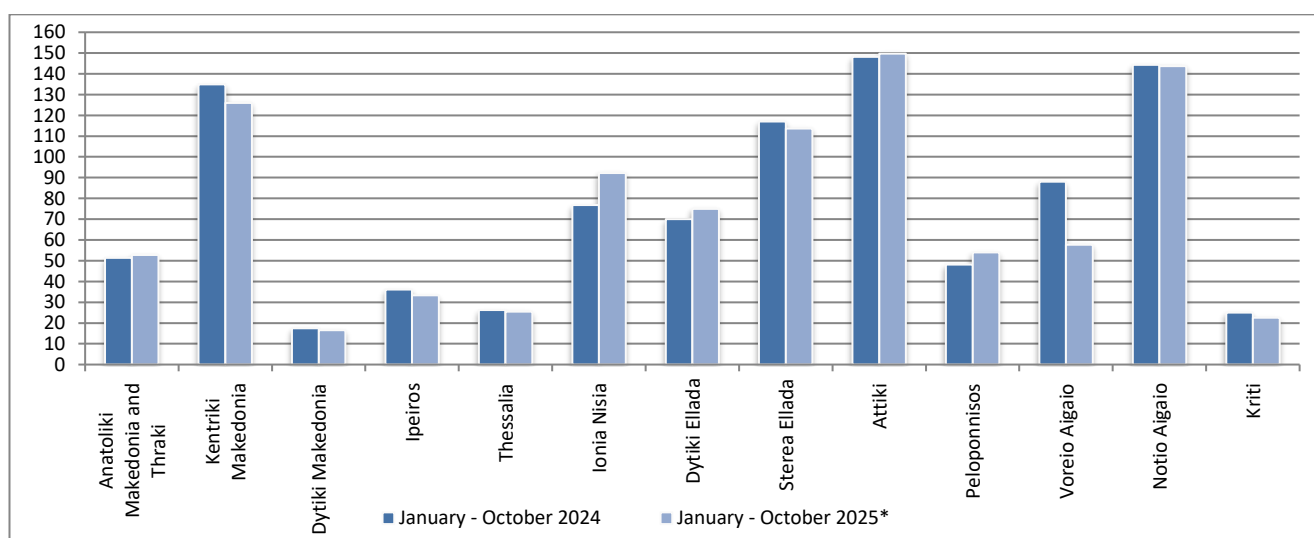
Graph 7: Fatalities per 100,000 inhabitants, for the period January - October 2024 and 2025*



Graph 8: Serious injuries per 100,000 inhabitants, for the period January - October 2024 and 2025*



Graph 9: Slight injuries per 100,000 inhabitants, for the period January - October 2024 and 2025*



* Provisional data

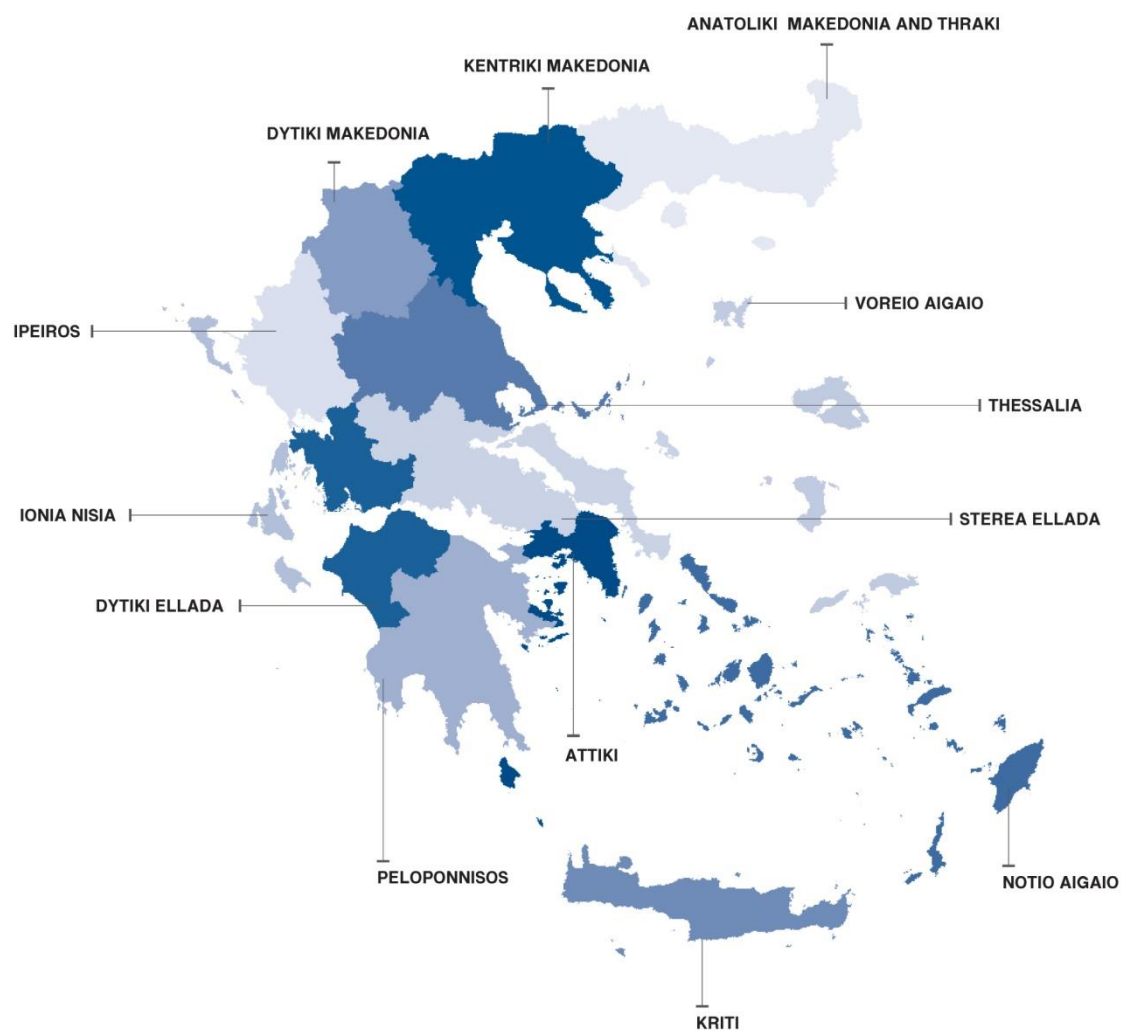
EXPLANATORY NOTES

Survey on Road Traffic Accidents

The Survey on Road Traffic Accidents is conducted on a monthly basis and it records, for each region (see map) and department of Greece and for each month separately, the number of accidents resulting in death or injury, as well as the number of persons injured by categories (drivers, passengers, pedestrians).

On a yearly basis, road traffic accidents are further analyzed. The competent agencies for filling in/collecting the forms on road accidents are the local Police Authorities and the local Port Authorities of Greece.

The lower level of analysis for the place where an injury road accident occurred is the settlement. Data are collected on a monthly basis. The main variables are the following: place of accident, kind of road, casualties, conditions of road surface and type of road.



Legal basis

The Survey on Road Traffic Accidents is governed by Council Decision 93/704 of the European Community.

Reference period

Monthly.

Availability of data

Provisional data are available 2 months after the reference month.
Final data are available 14 months after the reference year.

Definitions **Road accident** (injury accident): Any accident involving at least one road motor vehicle in motion on a public road or square to which the public has access (excluding yards, industrial sites or vehicle depot of public transport enterprises), resulting in at least one injured or killed person. Accidents with only material damages are not included.

Fatality (Death): Any person killed immediately or dying within 30 days as a result of an injury accident (This national definition applies since 01.01.1996)

Person injured: Any person who sustained an injury as result of an injury accident, and who normally needs medical treatment.

Serious injury: Any person who sustained an injury as result of an injury accident, such as brain damages, mutilation, multiple injuries, which may result in lack of awareness or which are life-threatening.

Slight injury: Any person injured who sustained minor and not life-threatening injuries.

Vehicle: Include motor vehicles, trolleybuses, motorcycles, bicycles, motorbikes, agricultural and road making machines, animal and hand-drawn vehicles. Railway vehicles are excluded, unless the road accident involves at least one of the aforementioned types of vehicles and therefore, railway vehicles are considered vehicles.

Methodology The forms of the survey are filled in by the local Police Authorities and the local Port Authorities as well.

References More information about Road Traffic Accidents is available on ELSTAT's website and more specifically at the link: <https://www.statistics.gr/en/statistics/-/publication/SDT03/>.