



INDUSTRIAL PRODUCTION INDEX: August 2024, y-o-y increase of 3.1%

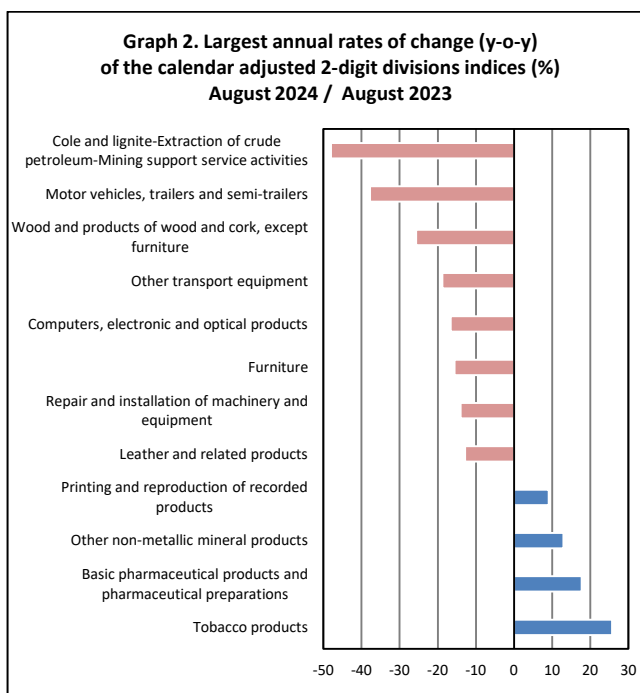
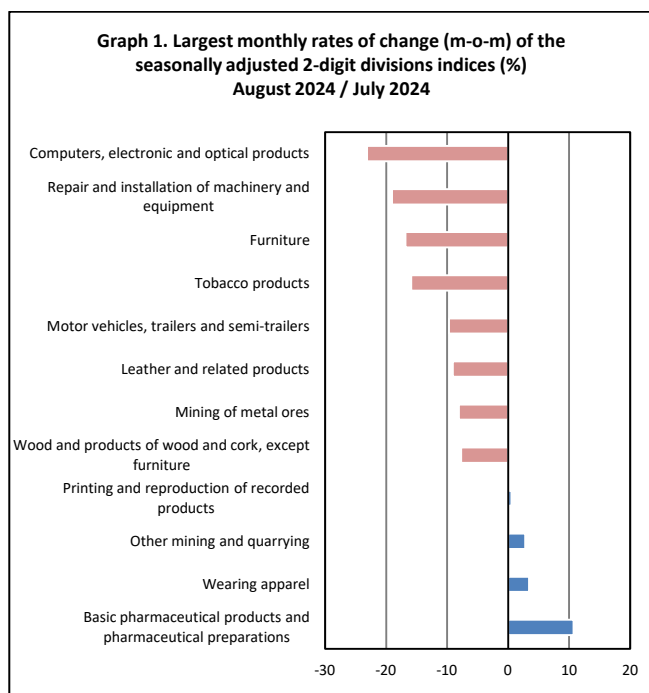
The Hellenic Statistical Authority announces the Industrial Production Index (IPI) with base year 2015=100.0 for August 2024, the evolution of which, on the basis of provisional and working day adjusted data, is as follows:

The Overall Industrial Production Index in August 2024 recorded an increase of 3.1% compared with August 2023. The Overall IPI in August 2023 decreased by 0.2% compared with the corresponding index in August 2022 (Table 1).

The average Overall Industrial Production Index for the period from January to August 2024 recorded an increase of 6.7% compared with the average IPI of the period from January to August 2023 (Table 2).

The seasonally adjusted Overall Industrial Production Index in August 2024 recorded a decrease of 4.0% compared with the corresponding index of July 2024 (Table 4).

The index of computers, electronic and optical products division showed the greatest percentage decrease, whereas the index of basic pharmaceutical products and pharmaceutical preparations division recorded the greatest percentage increase in August 2024 compared with July 2024. Comparing the indices of August 2024 with the corresponding indices of August 2023, the greatest percentage increase was recorded in tobacco products division, while the highest percentage decrease was recorded in mining of coal and lignite – extraction of crude petroleum and natural gas – mining support service activities divisions (Tables 1 and 4).



Information on methodological issues:

Business Statistics Division
Manufacture-Construction Indices and Industrial Products Section
Head of the Section: Diamantaki Aikaterini
Tel: +30 213 135 2056
E-mail: a.diamantaki@statistics.gr

Information on data provision:

Tel: +30 213 135 2023, 2308, 2310
E-mail: data.dissem@statistics.gr

Evolution of the Industrial Production Index in August 2024

I. Annual changes: August 2024 / August 2023 (Table 1)

The 3.1% increase of the working day adjusted Overall IPI in August 2024, compared with the corresponding index in August 2023, is due to the annual changes of the sub-indices in the following industrial sections:

Increase of:

- 3.9% in the Electricity Supply Index.
- 3.9% in the Water Supply Index.
- 3.1% in the Manufacturing Index. The increase was mainly the result of the annual changes of the sub-indices in the following 2-digit divisions: tobacco products, basic pharmaceutical products and pharmaceutical preparations, other non-metallic mineral products, printing and reproduction of recorded products.

Decrease of:

- 5.5% in the Mining and Quarrying Index. The decrease was mainly the result of the annual changes of the sub-indices in the following 2-digit divisions: mining of coal and lignite – extraction of crude petroleum and natural gas – mining support service activities, other mining and quarrying.

II. Rates of change of the average index of the period January - August 2024 compared with the corresponding index of the period January - August 2023 (Table 2)

The 6.7% increase of the working day adjusted average Overall IPI in the 8-month period January - August 2024, compared with the corresponding index in January - August 2023, is due to the corresponding rates of change of the sub-indices in the following industrial sections:

Increase of:

- 14.8% in the Electricity Supply Index.
- 5.0% in the Manufacturing Index.
- 4.6% in the Water Supply Index.

Decrease of:

- 0.04% in the Mining and Quarrying Index.

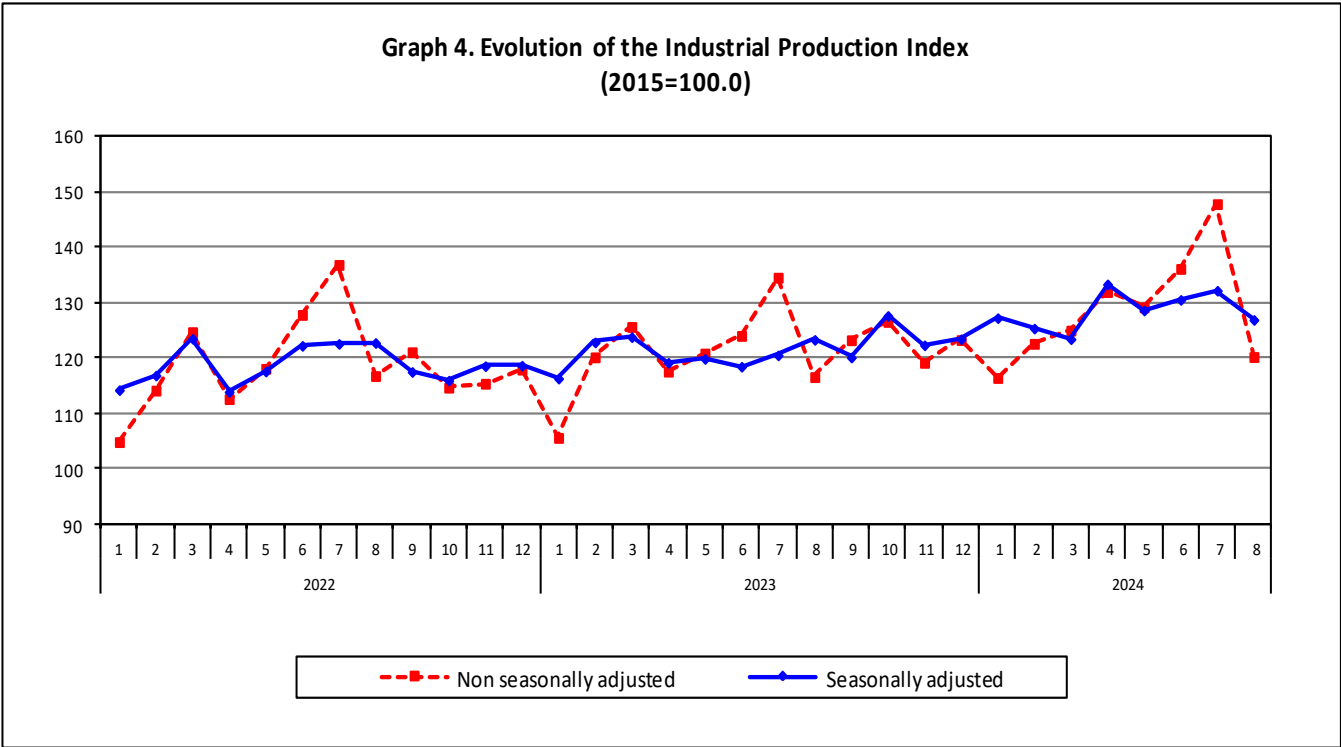
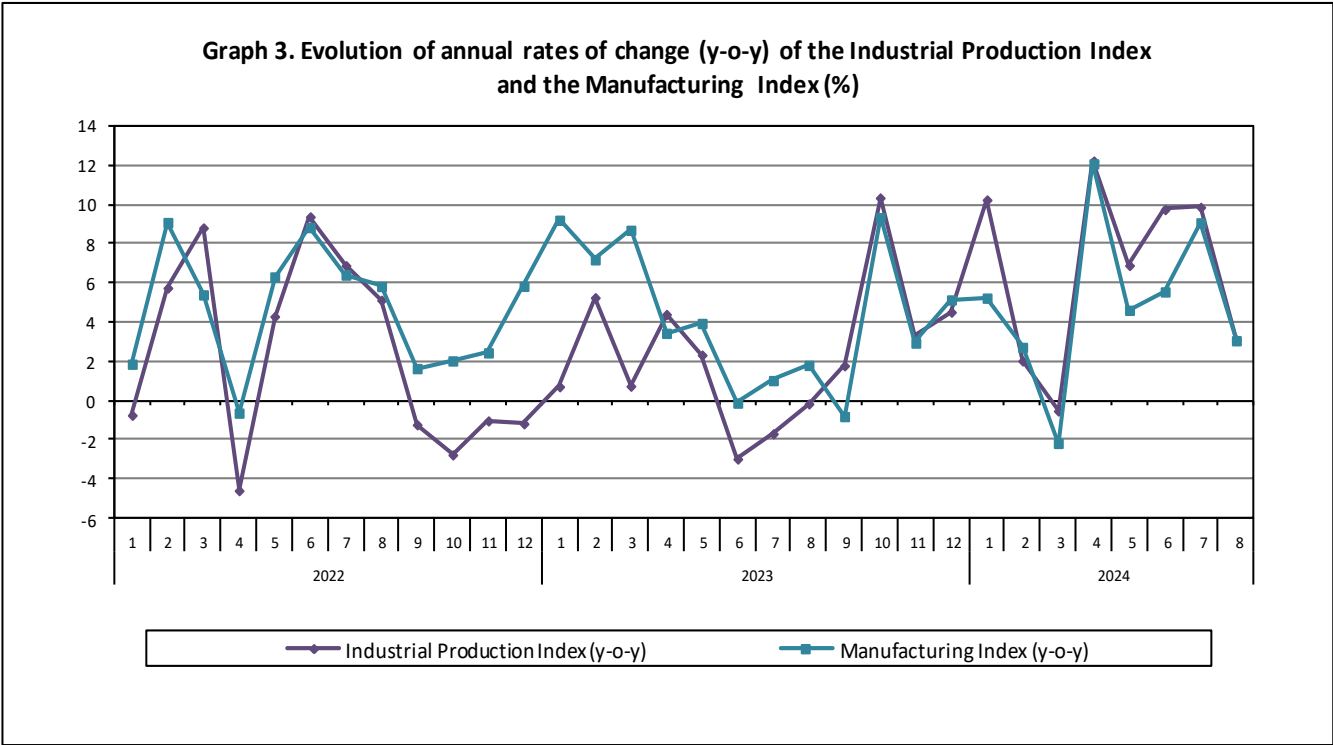
III. Monthly changes: August 2024 / July 2024 (Table 4)

The 4.0% decrease of the seasonally adjusted Overall IPI in August 2024, compared with the corresponding index in July 2024 is due to the monthly changes of the sub-indices in the following industrial sections:

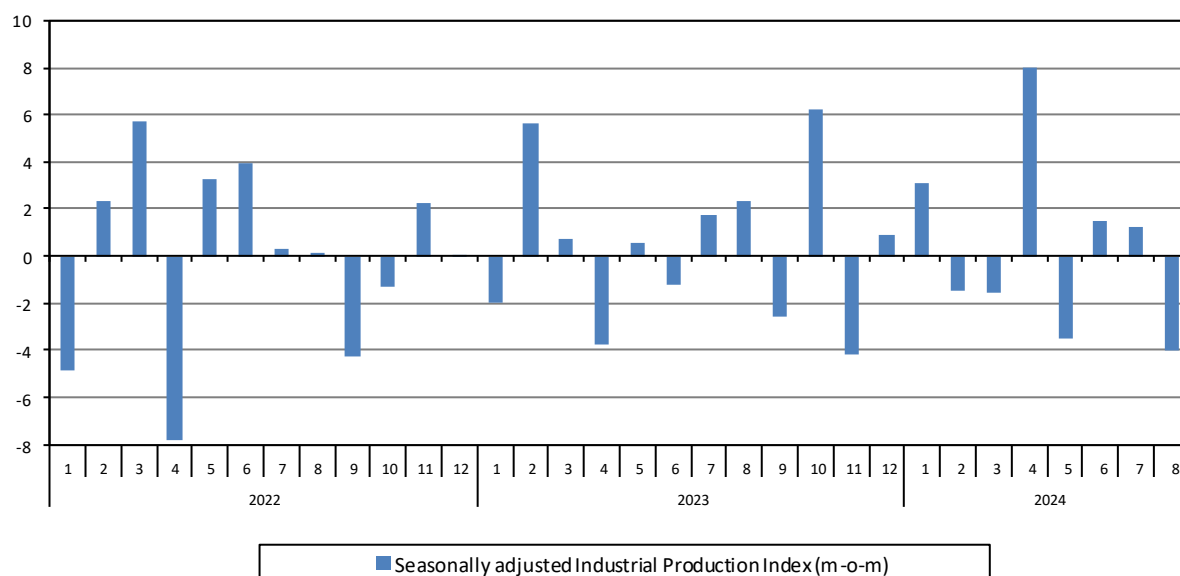
Increase of:

- 6.9% in the Electricity Supply Index.
- 3.9% in the Manufacturing Index.
- 1.5% in the Mining and Quarrying Index.
- 0.5% in the Water Supply Index.

The following graphs depict the annual rates of change (y-o-y) of the Industrial Production Index and the Manufacturing Index, the evolution of the seasonally and non-seasonally adjusted Overall Industrial Production Index, as well as the monthly rates of change (m-o-m) of the seasonally adjusted index.



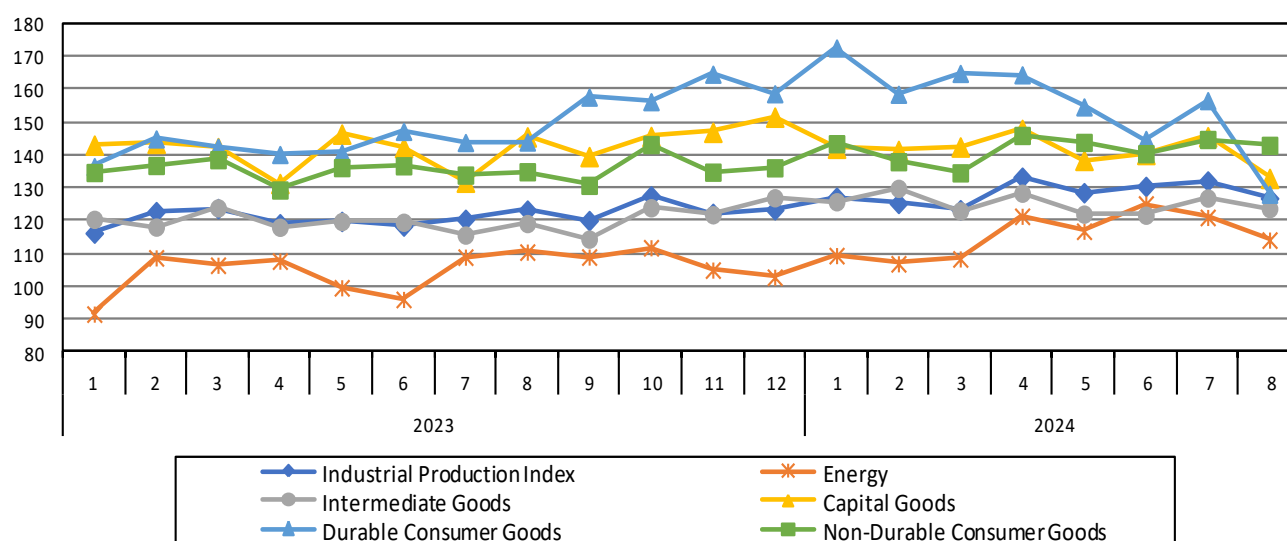
Graph 5. Evolution of the monthly rates of change (m-o-m) of the seasonally adjusted Industrial Production Index (%)



It should be noted that the time series with the seasonally adjusted indices is recalculated every time a new observation is added in the time series. Therefore, the seasonally adjusted data differ from the data published in the previous Announcement.

The following graphs depict the evolution of the seasonally adjusted Industrial Production Index and the Main Industrial Groupings, as well as the evolution of the Industrial Production Index and the Industrial Sections Indices.

Graph 6. Evolution of the seasonally adjusted Industrial Production Index and the Main Industrial Groupings Indices, January 2023 - August 2024 (2015=100.0)



**Graph 7. Evolution of the Industrial Production Index and the Industrial Section Indices
(2015=100.0)**

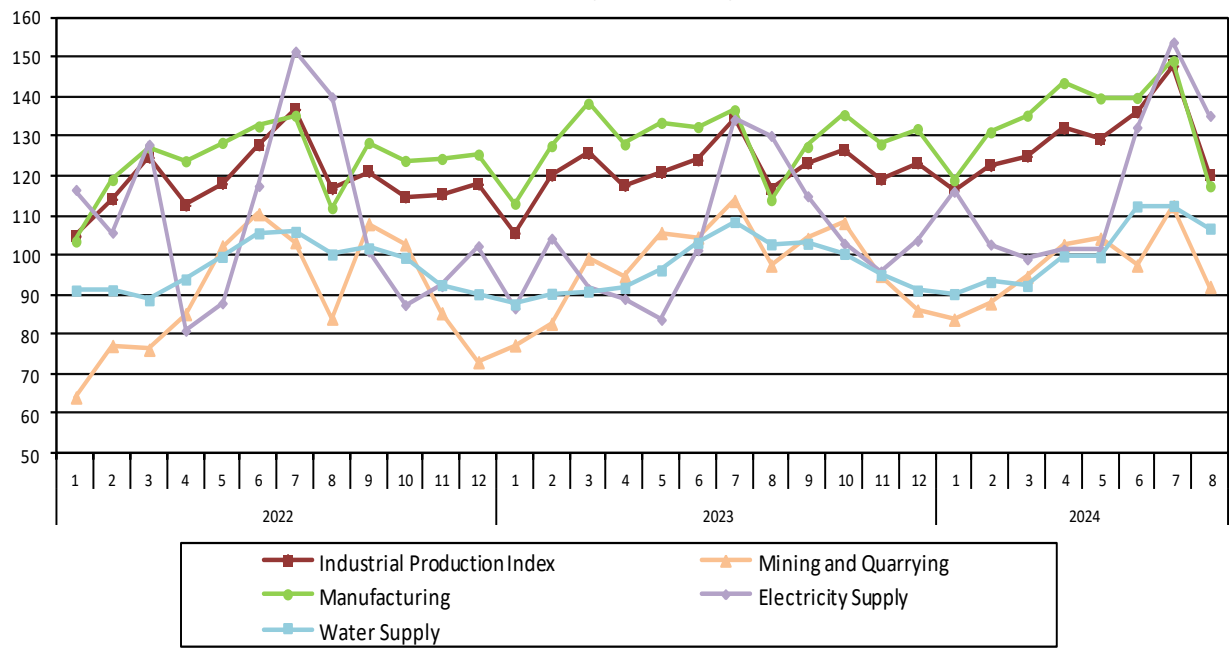


Table 1. Annual rates of change of the Industrial Production Index
(Working day adjusted data, according to the real number of working days)
Base year: 2015=100.0

Code		Division	August			Rate of change (%)	
			2024*	2023	2022	2024/2023	2023/2022
OVERALL INDEX			120.23	116.61	116.79	3.1	-0.2
B	MINING AND QUARRYING		92.06	97.45	84.06	-5.5	15.9
05-06-09	Mining of coal and lignite – Extraction of crude petroleum and natural gas – Mining support service activities		11.07	21.29	20.88	-48.0	2.0
07	Mining of metal ores		113.74	117.70	102.60	-3.4	14.7
08	Other mining and quarrying		96.50	101.67	86.96	-5.1	16.9
C	MANUFACTURING		117.46	113.97	111.94	3.1	1.8
10	Food		150.27	146.60	135.05	2.5	8.6
11	Beverages		129.58	123.89	123.32	4.6	0.5
12	Tobacco products		103.59	82.36	83.05	25.8	-0.8
13	Textiles		65.53	70.58	70.76	-7.2	-0.3
14	Wearing apparel		52.46	53.59	64.59	-2.1	-17.0
15	Leather and related products		41.92	48.08	47.63	-12.8	0.9
16	Wood and products of wood and cork, except furniture		62.01	83.39	73.99	-25.6	12.7
17	Paper and paper products		94.84	94.95	98.04	-0.1	-3.2
18	Printing and reproduction of recorded products		101.54	93.08	94.89	9.1	-1.9
19	Coke and refined petroleum products		120.88	118.42	121.13	2.1	-2.2
20	Chemicals and chemical products		90.02	92.99	92.43	-3.2	0.6
21	Basic pharmaceutical products and pharmaceutical preparations		173.53	147.38	123.89	17.7	19.0
22	Rubber and plastic products		91.67	92.54	97.12	-0.9	-4.7
23	Other non-metallic mineral products		115.31	102.05	106.63	13.0	-4.3
24	Basic metals		111.46	104.98	108.28	6.2	-3.0
25	Fabricated metal products, except machinery and equipment		102.77	94.82	101.11	8.4	-6.2
26	Computers, electronic and optical products		139.05	166.75	168.10	-16.6	-0.8
27	Electrical equipment		102.18	96.57	112.19	5.8	-13.9
28	Machinery and equipment n. e. c.		79.77	87.27	79.65	-8.6	9.6
29	Motor vehicles, trailers and semi-trailers		83.71	134.53	124.91	-37.8	7.7
30	Other transport equipment		46.59	57.36	66.00	-18.8	-13.1
31	Furniture		72.47	85.90	97.96	-15.6	-12.3
32	Other manufacturing		105.97	108.51	107.88	-2.3	0.6
33	Repair and installation of machinery and equipment		60.45	70.31	68.52	-14.0	2.6
D	ELECTRICITY SUPPLY		135.23	130.18	139.93	3.9	-7.0
35	Electricity supply		135.23	130.18	139.93	3.9	-7.0
E	WATER SUPPLY		106.77	102.80	100.24	3.9	2.6
36	Water collection, treatment and supply		106.77	102.80	100.24	3.9	2.6
MAIN INDUSTRIAL GROUPINGS							
1	Energy		127.51	123.47	129.74	3.3	-4.8
2	Intermediate goods		100.80	97.14	98.89	3.8	-1.8
3	Capital goods		87.90	98.01	95.19	-10.3	3.0
4	Consumer Durables		75.35	88.89	104.00	-15.2	-14.5
5	Consumer Non-Durables		137.29	129.72	121.38	5.8	6.9

* Provisional data

Note: The indices are rounded up to two decimal digits when published and percentage changes up to one decimal digit when published.

Table 2. Average indices of the period January – August and rates of change of the Industrial Production Index
(Working day adjusted data, according to the real number of working days)

Base year: 2015=100.0

Code		Division	Average indices of the period Jan.-August			Rate of change (%)	
			2024*	2023	2022	2024/2023	2023/2022
OVERALL INDEX			128.68	120.64	119.50	6.7	1.0
B	MINING AND QUARRYING		96.88	96.92	87.84	-0.04	10.3
05-06-09	Mining of coal and lignite – Extraction of crude petroleum and natural gas – Mining support service activities		16.58	24.49	20.22	-32.3	21.1
07	Mining of metal ores		120.93	123.65	118.76	-2.2	4.1
08	Other mining and quarrying		100.41	98.37	87.14	2.1	12.9
C	MANUFACTURING		134.35	127.94	122.72	5.0	4.3
10	Food		124.89	118.00	112.39	5.8	5.0
11	Beverages		118.57	110.43	111.44	7.4	-0.9
12	Tobacco products		158.99	140.25	119.39	13.4	17.5
13	Textiles		107.14	109.83	110.91	-2.4	-1.0
14	Wearing apparel		64.45	72.38	79.39	-11.0	-8.8
15	Leather and related products		90.96	97.41	79.34	-6.6	22.8
16	Wood and products of wood and cork, except furniture		102.06	109.07	107.58	-6.4	1.4
17	Paper and paper products		113.70	113.25	118.07	0.4	-4.1
18	Printing and reproduction of recorded products		134.85	125.12	136.05	7.8	-8.0
19	Coke and refined petroleum products		117.44	109.68	105.68	7.1	3.8
20	Chemicals and chemical products		136.45	125.54	125.01	8.7	0.4
21	Basic pharmaceutical products and pharmaceutical preparations		282.64	276.76	221.73	2.1	24.8
22	Rubber and plastic products		126.86	125.08	129.12	1.4	-3.1
23	Other non-metallic mineral products		141.54	126.46	122.43	11.9	3.3
24	Basic metals		132.69	129.52	129.92	2.5	-0.3
25	Fabricated metal products, except machinery and equipment		139.92	133.31	134.28	5.0	-0.7
26	Computers, electronic and optical products		238.87	227.68	205.87	4.9	10.6
27	Electrical equipment		143.55	133.92	141.43	7.2	-5.3
28	Machinery and equipment n. e. c.		123.08	124.53	120.75	-1.2	3.1
29	Motor vehicles, trailers and semi-trailers		135.34	158.90	146.68	-14.8	8.3
30	Other transport equipment		69.59	69.05	70.66	0.8	-2.3
31	Furniture		145.69	150.75	143.29	-3.4	5.2
32	Other manufacturing		130.27	131.97	126.22	-1.3	4.6
33	Repair and installation of machinery and equipment		99.35	90.52	90.47	9.7	0.1
D	ELECTRICITY SUPPLY		117.76	102.61	116.00	14.8	-11.5
35	Electricity supply		117.76	102.61	116.00	14.8	-11.5
E	WATER SUPPLY		100.85	96.41	97.04	4.6	-0.6
36	Water collection, treatment and supply		100.85	96.41	97.04	4.6	-0.6
MAIN INDUSTRIAL GROUPINGS							
1	Energy		115.72	104.06	110.62	11.2	-5.9
2	Intermediate goods		125.65	119.75	120.46	4.9	-0.6
3	Capital goods		132.72	131.53	125.22	0.9	5.0
4	Consumer Durables		151.06	137.24	129.87	10.1	5.7
5	Consumer Non-Durables		144.50	137.64	127.45	5.0	8.0

* Provisional data

Note: The indices are rounded up to two decimal digits when published and percentage changes up to one decimal digit when published.

Table 3. Monthly rate of change of the Industrial Production Index
(Working day adjusted data, according to the real number of working days)

Base year: 2015=100.0

Code	Division	August 2024*	July 2024**	Rate of change (%) August 2024/July 2024
OVERALL INDEX		120.23	147.84	-18.7
B	MINING AND QUARRYING	92.06	112.43	-18.1
05-06-09	Mining of coal and lignite – Extraction of crude petroleum and natural gas – Mining support service activities	11.07	15.05	-26.4
07	Mining of metal ores	113.74	143.86	-20.9
08	Other mining and quarrying	96.50	115.92	-16.8
C	MANUFACTURING	117.46	149.05	-21.2
10	Food	150.27	135.75	10.7
11	Beverages	129.58	151.54	-14.5
12	Tobacco products	103.59	190.61	-45.7
13	Textiles	65.53	117.36	-44.2
14	Wearing apparel	52.46	66.52	-21.1
15	Leather and related products	41.92	108.68	-61.4
16	Wood and products of wood and cork, except furniture	62.01	106.99	-42.0
17	Paper and paper products	94.84	119.72	-20.8
18	Printing and reproduction of recorded products	101.54	135.13	-24.9
19	Coke and refined petroleum products	120.88	120.25	0.5
20	Chemicals and chemical products	90.02	141.27	-36.3
21	Basic pharmaceutical products and pharmaceutical preparations	173.53	345.26	-49.7
22	Rubber and plastic products	91.67	141.32	-35.1
23	Other non-metallic mineral products	115.31	150.87	-23.6
24	Basic metals	111.46	138.56	-19.6
25	Fabricated metal products, except machinery and equipment	102.77	159.85	-35.7
26	Computers, electronic and optical products	139.05	257.68	-46.0
27	Electrical equipment	102.18	159.31	-35.9
28	Machinery and equipment n. e. c.	79.77	139.60	-42.9
29	Motor vehicles, trailers and semi-trailers	83.71	142.16	-41.1
30	Other transport equipment	46.59	97.20	-52.1
31	Furniture	72.47	180.80	-59.9
32	Other manufacturing	105.97	159.23	-33.5
33	Repair and installation of machinery and equipment	60.45	122.53	-50.7
D	ELECTRICITY SUPPLY	135.23	153.78	-12.1
35	Electricity supply	135.23	153.78	-12.1
E	WATER SUPPLY	106.77	112.52	-5.1
36	Water collection, treatment and supply	106.77	112.52	-5.1
MAIN INDUSTRIAL GROUPINGS				
1	Energy	127.51	138.68	-8.1
2	Intermediate goods	100.80	135.87	-25.8
3	Capital goods	87.90	154.75	-43.2
4	Consumer Durables	75.35	179.76	-58.1
5	Consumer Non-Durables	137.29	164.73	-16.7

* Provisional data **Revised data

Note: The indices are rounded up to two decimal digits when published and percentage changes up to one decimal digit when published.

Table 4. Monthly rate of change of the seasonally adjusted Industrial Production Index

Base year: 2015=100.0

Code	Division	August 2024	July 2024	Rate of change (%) August 2024/July 2024
	OVERALL INDEX	126.92	132.20	-4.0
B	MINING AND QUARRYING	95.00	96.43	-1.5
05-06-09	Mining of coal and lignite – Extraction of crude petroleum and natural gas – Mining support service activities	-	-	-
07	Mining of metal ores	124.42	135.33	-8.1
08	Other mining and quarrying	97.71	95.08	2.8
C	MANUFACTURING	131.58	136.92	-3.9
10	Food	123.07	126.20	-2.5
11	Beverages	108.74	110.00	-1.2
12	Tobacco products	148.05	176.07	-15.9
13	Textiles	104.04	108.32	-3.9
14	Wearing apparel	64.28	62.15	3.4
15	Leather and related products	86.56	95.22	-9.1
16	Wood and products of wood and cork, except furniture	91.30	98.93	-7.7
17	Paper and paper products	114.30	114.17	0.1
18	Printing and reproduction of recorded products	139.20	138.48	0.5
19	Coke and refined petroleum products	117.99	121.11	-2.6
20	Chemicals and chemical products	124.67	132.69	-6.0
21	Basic pharmaceutical products and pharmaceutical preparations	313.51	283.12	10.7
22	Rubber and plastic products	121.68	130.67	-6.9
23	Other non-metallic mineral products	135.44	141.01	-3.9
24	Basic metals	133.91	137.58	-2.7
25	Fabricated metal products, except machinery and equipment	140.65	140.82	-0.1
26	Computers, electronic and optical products	198.03	257.64	-23.1
27	Electrical equipment	146.13	156.73	-6.8
28	Machinery and equipment n. e. c.	125.76	128.51	-2.1
29	Motor vehicles, trailers and semi-trailers	127.51	141.24	-9.7
30	Other transport equipment	63.81	69.13	-7.7
31	Furniture	127.75	153.59	-16.8
32	Other manufacturing	137.96	139.40	-1.0
33	Repair and installation of machinery and equipment	98.30	121.40	-19.0
D	ELECTRICITY SUPPLY	115.69	124.28	-6.9
35	Electricity supply	115.69	124.28	-6.9
E	WATER SUPPLY	100.90	101.46	-0.5
36	Water collection, treatment and supply	100.90	101.46	-0.5
	MAIN INDUSTRIAL GROUPINGS			
1	Energy	114.20	121.10	-5.7
2	Intermediate goods	123.79	127.00	-2.5
3	Capital goods	132.99	145.69	-8.7
4	Consumer Durables	128.17	156.68	-18.2
5	Consumer Non-Durables	143.06	144.85	-1.2

Notes:

1. The indices are rounded up to two decimal digits when published and percentage changes up to one decimal digit when published.
2. The whole time-series with seasonally adjusted indices is recalculated every time a new observation is added in the time-series.
3. The composed index of divisions 05-06-09 is not seasonally adjusted.

Table 5. Evolution of the Overall Industrial Production Index

(Working day adjusted data, according to the real number of working days)

Base year: 2015=100.0

Year and month		Overall Index	Monthly rate of change (%)	Annual rate of change (%)	12-month average index (moving average)	Rate of change of the 12-month average index (%)
2022:	1	104.88	-12.1	-0.7	115.94	9.7
	2	114.17	8.9	5.8	116.46	9.9
	3	124.73	9.2	8.8	117.30	10.1
	4	112.63	-9.7	-4.6	116.85	7.9
	5	118.11	4.9	4.3	117.25	7.1
	6	127.84	8.2	9.4	118.17	7.1
	7	136.86	7.1	6.9	118.90	7.0
	8	116.79	-14.7	5.1	119.38	6.6
	9	121.10	3.7	-1.2	119.25	5.6
	10	114.71	-5.3	-2.8	118.98	4.0
	11	115.41	0.6	-1.0	118.88	3.3
	12	117.96	2.2	-1.2	118.77	2.4
Annual average		118.77				
2023:	1	105.63	-10.5	0.7	118.83	2.5
	2	120.18	13.8	5.3	119.33	2.5
	3	125.66	4.6	0.7	119.41	1.8
	4	117.60	-6.4	4.4	119.82	2.5
	5	120.86	2.8	2.3	120.05	2.4
	6	124.05	2.6	-3.0	119.73	1.3
	7	134.56	8.5	-1.7	119.54	0.5
	8	116.61	-13.3	-0.2	119.53	0.1
	9	123.27	5.7	1.8	119.71	0.4
	10	126.57	2.7	10.3	120.70	1.4
	11	119.19	-5.8	3.3	121.01	1.8
	12	123.30	3.4	4.5	121.46	2.3
Annual average		121.46				
2024*:	1	116.45	-5.6	10.2	122.36	3.0
	2	122.62	5.3	2.0	122.56	2.7
	3	125.01	1.9	-0.5	122.51	2.6
	4	131.97	5.6	12.2	123.70	3.2
	5	129.20	-2.1	6.9	124.40	3.6
	6	136.15	5.4	9.8	125.41	4.7
	7	147.84	8.6	9.9	126.51	5.8
	8	120.23	-18.7	3.1	126.82	6.1

* Provisional data

Note: The indices are rounded up to two decimal digits when published and percentage changes up to one decimal digit when published.

Table 6. Monthly evolution of the seasonally adjusted Overall Industrial Production Index and Main Industrial Groupings

Base year: 2015=100.0

Year and month		Overall Index		Energy		Intermediate goods		Capital goods		Consumer durables		Consumer non-durables	
		Index	Monthly rate of change (%)	Index	Monthly rate of change (%)	Index	Monthly rate of change (%)	Index	Monthly rate of change (%)	Index	Monthly rate of change (%)	Index	Monthly rate of change (%)
2022:	1	114.25	-4.9	106.59	-6.2	118.67	-3.9	118.60	-8.0	118.98	0.4	118.67	-3.5
	2	116.89	2.3	102.72	-3.6	122.66	3.4	129.75	9.4	125.60	5.6	125.69	5.9
	3	123.53	5.7	121.09	17.9	119.26	-2.8	129.51	-0.2	137.21	9.2	127.52	1.5
	4	113.92	-7.8	99.29	-18.0	118.08	-1.0	129.37	-0.1	134.36	-2.1	123.26	-3.3
	5	117.61	3.2	104.44	5.2	120.22	1.8	135.84	5.0	132.89	-1.1	125.92	2.2
	6	122.25	3.9	112.63	7.8	121.76	1.3	139.70	2.8	138.01	3.9	128.86	2.3
	7	122.60	0.3	117.49	4.3	119.18	-2.1	141.30	1.1	131.24	-4.9	126.06	-2.2
	8	122.77	0.1	116.22	-1.1	121.22	1.7	138.56	-1.9	158.14	20.5	125.92	-0.1
	9	117.53	-4.3	98.74	-15.0	121.36	0.1	142.33	2.7	138.47	-12.4	129.67	3.0
	10	115.96	-1.3	99.30	0.6	116.55	-4.0	138.07	-3.0	148.99	7.6	128.14	-1.2
	11	118.57	2.3	101.41	2.1	117.75	1.0	136.13	-1.4	143.50	-3.7	134.05	4.6
	12	118.67	0.1	101.30	-0.1	120.39	2.2	134.26	-1.4	153.10	6.7	132.45	-1.2
Annual average		118.71		106.77		119.76		134.45		138.37		127.18	
2023:	1	116.33	-2.0	91.66	-9.5	120.52	0.1	143.13	6.6	136.60	-10.8	134.79	1.8
	2	122.87	5.6	108.78	18.7	118.16	-2.0	143.68	0.4	145.02	6.2	136.93	1.6
	3	123.81	0.8	106.53	-2.1	124.01	5.0	142.38	-0.9	142.51	-1.7	138.69	1.3
	4	119.18	-3.7	107.79	1.2	118.11	-4.8	131.43	-7.7	140.27	-1.6	129.46	-6.7
	5	119.89	0.6	99.67	-7.5	119.85	1.5	146.49	11.5	140.71	0.3	136.28	5.3
	6	118.48	-1.2	96.12	-3.6	119.63	-0.2	142.39	-2.8	147.31	4.7	136.83	0.4
	7	120.53	1.7	109.01	13.4	115.72	-3.3	131.84	-7.4	143.92	-2.3	134.00	-2.1
	8	123.33	2.3	110.54	1.4	119.24	3.0	145.64	10.5	144.07	0.1	135.02	0.8
	9	120.14	-2.6	109.04	-1.4	114.50	-4.0	139.64	-4.1	157.75	9.5	130.89	-3.1
	10	127.65	6.2	111.86	2.6	124.04	8.3	145.76	4.4	156.36	-0.9	143.29	9.5
	11	122.34	-4.2	105.07	-6.1	121.93	-1.7	147.03	0.9	164.73	5.4	134.89	-5.9
	12	123.44	0.9	102.89	-2.1	127.09	4.2	151.65	3.1	158.78	-3.6	136.22	1.0
Annual average		121.50		104.91		120.23		142.59		148.17		135.61	
2024:	1	127.25	3.1	109.47	6.4	125.87	-1.0	142.18	-6.2	172.72	8.8	143.56	5.4
	2	125.37	-1.5	106.98	-2.3	129.96	3.3	141.52	-0.5	158.62	-8.2	138.08	-3.8
	3	123.45	-1.5	108.47	1.4	123.10	-5.3	142.56	0.7	164.97	4.0	134.68	-2.5
	4	133.35	8.0	121.45	12.0	128.49	4.4	147.92	3.8	164.54	-0.3	146.08	8.5
	5	128.63	-3.5	116.90	-3.7	122.11	-5.0	138.49	-6.4	154.77	-5.9	143.95	-1.5
	6	130.54	1.5	125.19	7.1	121.79	-0.3	140.28	1.3	144.87	-6.4	140.51	-2.4
	7	132.20	1.3	121.10	-3.3	127.00	4.3	145.69	3.9	156.68	8.1	144.85	3.1
	8	126.92	-4.0	114.20	-5.7	123.79	-2.5	132.99	-8.7	128.17	-18.2	143.06	-1.2

Notes:

1. The indices are rounded up to two decimal digits when published and percentage changes up to one decimal digit when published.
2. The whole time-series with seasonally adjusted indices is recalculated every time a new observation is added in the time-series.

METHODOLOGICAL NOTES

Generally	The Industrial Production Index (IPI) in Greece has been compiled by the Hellenic Statistical Authority (ELSTAT) from 1959 onwards.
Purpose of the index	The objective of the index is to compare the magnitude (volume) of the output in the current month in the mining and quarrying, manufacturing, electricity and water supply divisions with the corresponding output of a given fixed period, which is considered as base period. The Industrial Production Index shows the evolution of the value added of the production factors cost, at constant prices.
Legal framework	The compilation of the IPI is based on the framework of the implementation of Council Regulation (EC) No 1165/1998 concerning short-term statistics (STS-R). Furthermore, the IPI is governed by Regulation (EC) No 1893/2006 of the European Parliament and of the Council, by Commission Regulation (EC) No 656/2007, by Council Regulation (EC) No 451/2008, by Regulation (EU) No 2019/2152 of the European Parliament and of the Council on European business statistics, as well as Commission Implementing Regulation (EU) No 2020/1197 laying down technical specifications and arrangements pursuant to Regulation (EU) No 2019/2152.
Reference period	Month.
Base year	2015=100.0.
Revision	The IPI is a fixed base index. The Industrial Production Index was currently revised with new base year 2015 (2015=100.0) according to the provisions of Council Regulation No 1165/1998 concerning short-term statistics. Short-term indices are revised every five (5) years, particularly in calendar years ending in 0 or 5.
Statistical classifications	At the level of branches of economic activities, the statistical classification of economic activities NACE Rev.2 of EU was used (Regulation No 1893/2006), while at the level of main industrial groupings, the allocation of two-digit and three-digit NACE Rev. 2 headings to categories of aggregate classification was used, in accordance with Council Regulation No 656/2007. At product level, the statistical classification CPA 2008 of EU was used, according to Council Regulation No 451/2008.
Geographical coverage	The index covers the whole Country.
Coverage of economic activities	The index covers all the sections of industry, the main industrial groups, as well as all levels of economic activity.
Statistical survey	The data are collected from a sample of 1,263 enterprises. The survey covers 325 products and the measurement of the surveyed products is made in terms of output quantities or in terms of production value or turnover, according to the specific features in each branch of economic activity.
Seasonal adjustment	Seasonal adjustment is the procedure followed to remove the impact of seasonality on the time-series (i.e. the impact of monthly effects, e.g. holidays, tourist period etc.), in order to improve comparability over time. The method applied is TRAMO-SEATS with the use of JDemetra+ 2.0.0. For the seasonal adjustment of the Industrial Production Index at 2-digit level of NACE Rev.2, at section level (B – Mining and Quarrying, C – Manufacturing, D – Electricity and E – Water Supply) and for the Main Industrial Groupings (MIGs), the direct approach is applied, namely each time-series is seasonally adjusted independently. For the overall Industrial Production Index, the indirect approach is applied, with the seasonally adjusted IPI being computed by aggregating the seasonally adjusted MIGs using appropriate weights.
Publication of data	The revised IPI with the new base year 2015 (2015=100.0) is released since July 2019, with May 2019 as the first reference month. Data with base year 2015=100.0 are available from January 2000 onwards.
References	More information about the methodology concerning the compilation and calculation of the index and the time series are available on the website of the Hellenic Statistical Authority (ELSTAT) (http://www.statistics.gr/en/statistics/-/publication/DKT21/-).