



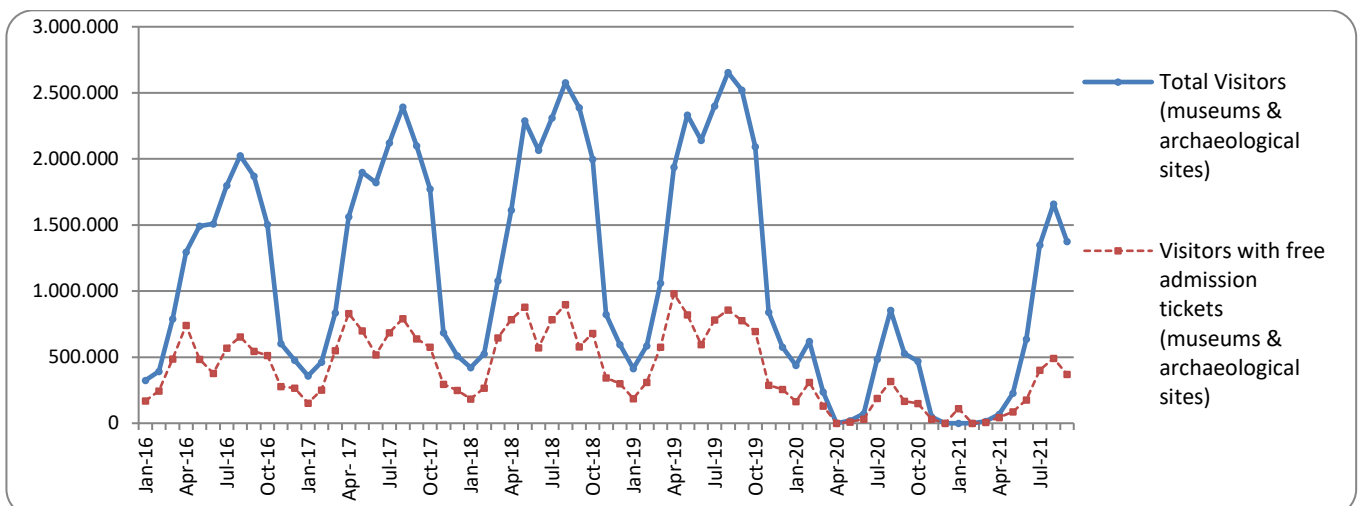
## PRESS RELEASE

### SURVEY ON MUSEUMS AND ARCHAEOLOGICAL SITES ATTENDANCE SEPTEMBER 2021

The Hellenic Statistical Authority (ELSTAT) announces the results of the *Survey on Museums and Archaeological Sites Attendance* for September 2021. More specifically:

- During September 2021, compared with the corresponding period of September 2020, Museums recorded an 172.1% increase in the number of visitors and an 155.6% increase in the number of free admission visitors as well as an 186.8% increase in their receipts (Table 1).
- In September 2021 compared with the corresponding month of 2020, the number of visitors at Archaeological sites recorded an increase of 157.0%, while an increase of 108.1% was observed in the number of free admission visitors and an increase of 194.5% was observed in the corresponding receipts (Table 1).
- During the nine month period from January to September 2021, compared to the corresponding period of 2020, an increase of 45.0% was observed in the number of visitors of Museums and an increase of 11.4% was recorded in the number of free admission visitors, while an 123.8% increase was observed in the relevant receipts, given the suspension of operation of Museums, from March 14<sup>th</sup> until June 16<sup>th</sup> 2020 and again gradually from November 1<sup>st</sup> 2020 until May 13<sup>th</sup> 2021, in the framework of the preventative measures against the Covid-19 pandemic (Table 2).
- As regards Archaeological sites, during the nine month period from January to September 2021, compared to the corresponding period of 2020, an increase of 72.1% was recorded in the number of visitors, while an increase of 23.3% was observed in the number of free admission visitors and an increase of 139.3% was observed in the relevant receipts, given the suspension of operation of Archaeological sites from March 14<sup>th</sup> until May 17<sup>th</sup> 2020 and from November 7<sup>th</sup> 2020 until March 21<sup>st</sup> 2021 in the framework of the preventative measures against the Covid-19 pandemic (Table 2).

**Graph 1: Visitors of Museums and Archaeological sites (January 2016 – September 2021)**



**Information on methodological issues:**

Sectoral Statistics Division  
Tourism and Cultural Statistics Section  
Head of the Section: Asimina Katri  
Tel: +30 213 135 2168  
e-mail: [a.katri@statistics.gr](mailto:a.katri@statistics.gr)

**Information for data provision:**

Tel. +30 213 135 2022, 2308, 2310  
e-mail: [data.dissem@statistics.gr](mailto:data.dissem@statistics.gr)

**TABLE 1: VISITORS OF MUSEUMS AND ARCHAEOLOGICAL SITES - TOTAL RECEIPTS  
(SEPTEMBER 2020 & SEPTEMBER 2021)**

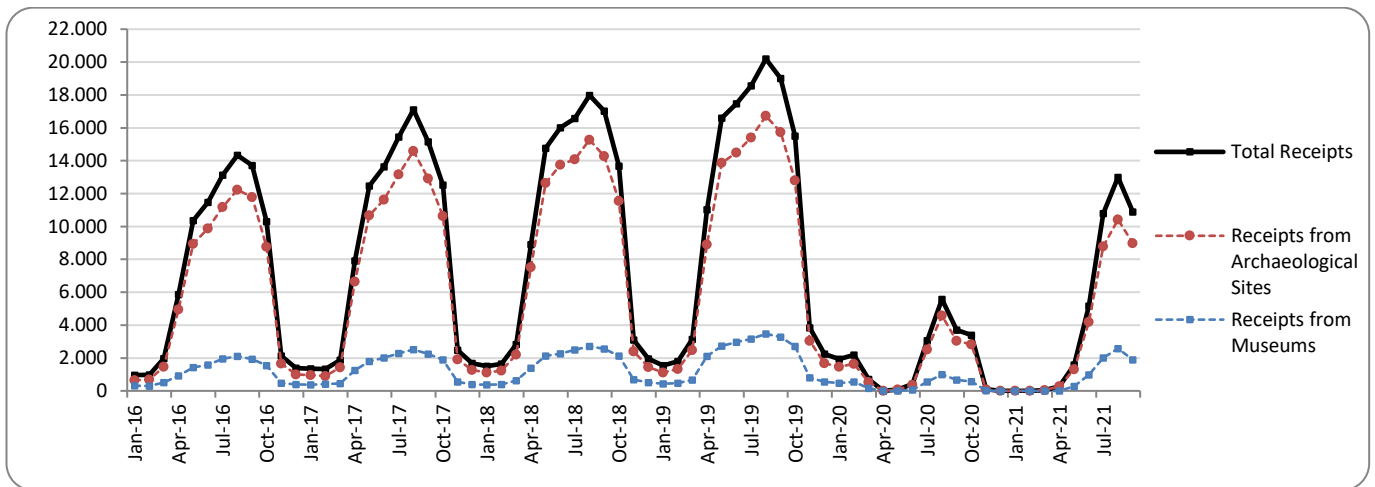
<b>I. NUMBER OF VISITORS</b>			
<b>Museums and Archaeological sites</b>	<b>2020 <sup>(2)</sup></b>	<b>2021 <sup>(2)</sup></b>	<b>Change 2021/2020</b>
<b>Total number of visitors (A+B)</b>	<b>528,241</b>	<b>1,376,699</b>	<b>160.6%</b>
<b>A. Museums (C+E)</b>	<b>126,832</b>	<b>345,082</b>	<b>172.1%</b>
Acropolis Museum	29,129	85,578	193.8%
National Archaeological	9,916	30,299	205.6%
Ancient Olympia	2,933	6,520	122.3%
Palace of the Grand Master (Rhodes)	12,075	29,767	146.5%
Herakleion Archaeological (Crete)	9,918	23,685	138.8%
White Tower	5,414	10,560	95.0%
Delphi	3,711	9,134	146.1%
Other museums	53,736	149,539	178.3%
<b>B. Archaeological Sites (D+F)</b>	<b>401,409</b>	<b>1,031,617</b>	<b>157.0%</b>
Epidavros <sup>(1)</sup>	12,738	34,971	174.5%
The Acropolis of Mycenae & Atreus' Treasure	8,379	29,282	249.5%
The Acropolis of Athens	68,547	206,507	201.3%
Sounio	11,378	25,780	126.6%
The Acropolis of Lindos	33,729	78,808	133.7%
Royal Tombs of Vergina	3,351	9,768	191.5%
Ancient Olympia	7,737	30,801	298.1%
Knossos (Crete)	32,582	83,161	155.2%
Phaistos (Crete)	4,734	11,068	133.8%
Ancient Korinthos <sup>(1)</sup>	4,223	11,461	171.4%
Mystras <sup>(1)</sup>	5,317	14,469	172.1%
Delphi	7,754	27,016	248.4%
Other archaeological sites	200,940	468,525	133.2%
<b>II. VISITORS WHO PAID TICKET</b>			
	<b>2020 <sup>(2)</sup></b>	<b>2021 <sup>(2)</sup></b>	<b>Change 2021/2020</b>
<b>Total number of visitors who paid ticket (C+D)</b>	<b>360,551</b>	<b>1,006,952</b>	<b>179.3%</b>
C. Museums	83,099	233,315	180.8%
D. Archaeological sites	277,452	773,637	178.8%
<b>III. VISITORS WITH FREE ADMISSION TICKETS</b>			
	<b>2020 <sup>(2)</sup></b>	<b>2021 <sup>(2)</sup></b>	<b>Change 2021/2020</b>
<b>Total number of visitors with free admission ticket (E+F)</b>	<b>167,690</b>	<b>369,747</b>	<b>120.5%</b>
E. Museums	43,733	111,767	155.6%
F. Archaeological sites	123,957	257,980	108.1%
<b>IV. RECEIPTS (euros)</b>			
	<b>2020 <sup>(2)</sup></b>	<b>2021 <sup>(2)</sup></b>	<b>Change 2021/2020</b>
<b>Total Receipts (G+H)</b>	<b>3,713,900</b>	<b>10,887,345</b>	<b>193.2%</b>
G. Museums	661,853	1,898,503	186.8%
H. Archaeological sites	3,052,047	8,988,842	194.5%

<sup>(1)</sup> Flat rate ticket, valid both for the museum and the archaeological site.

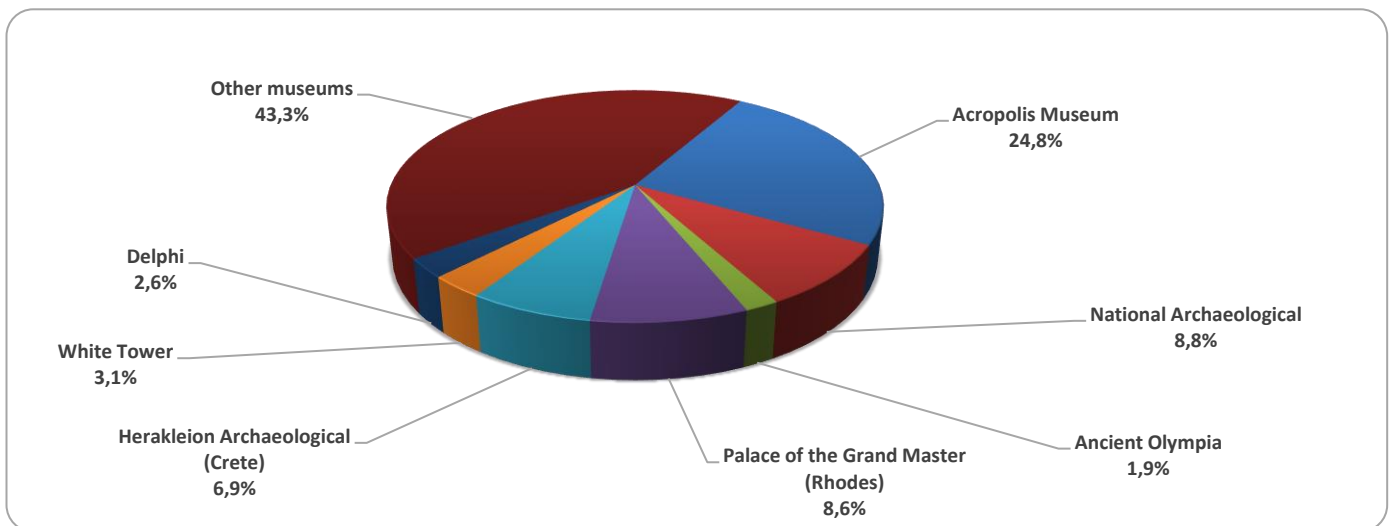
<sup>(2)</sup> The operation of Museums was suspended from March 14<sup>th</sup> until June 16<sup>th</sup> 2020 and again gradually from November 1<sup>st</sup> 2020 until May 13<sup>th</sup> 2021. The operation of Archaeological Sites was suspended from March 14<sup>th</sup> until May 17<sup>th</sup> 2020 and from November 7<sup>th</sup> 2020 until March 21<sup>st</sup> 2021, in the framework of the preventative measures against the Covid-19 pandemic.

The following graphs depict the evolution of the receipts of Museums and Archaeological Sites (Graph 2), as well as the number of visitors by Archaeological Sites (Graph 3).

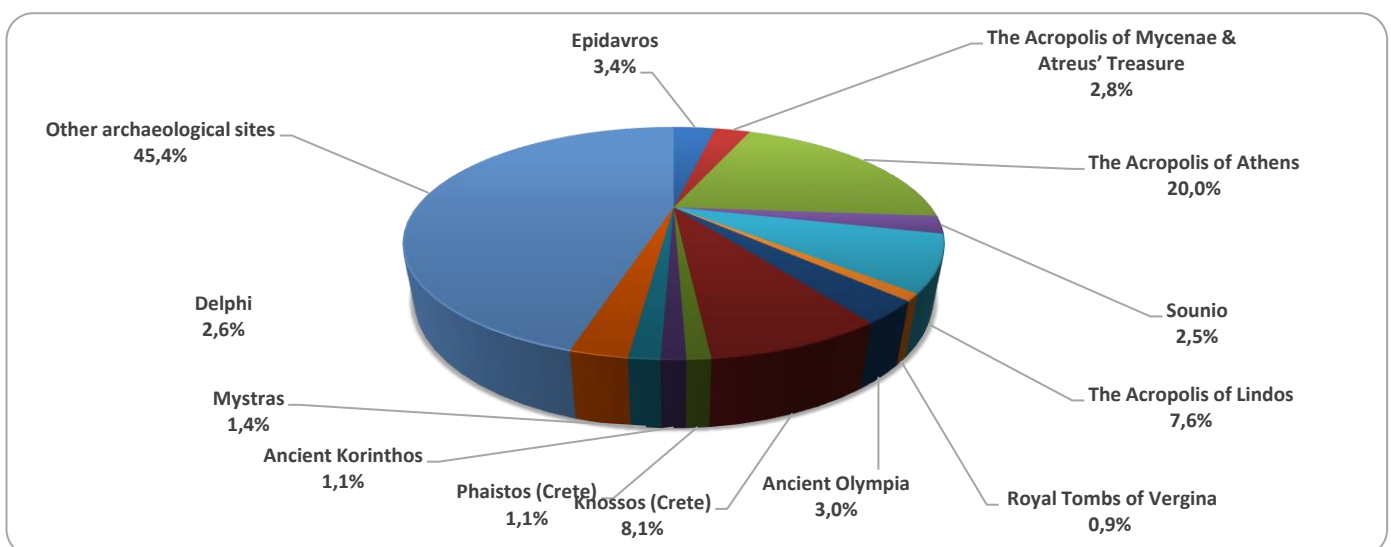
**Graph 2: Receipts from Museums and Archaeological Sites (January 2016 – September 2021)**  
(in thousand euro)



**Graph 3: Percentage distribution of visitors by Museum, September 2021**



**Graph 4: Percentage distribution of visitors by Archaeological site, September 2021**



**TABLE 2: VISITORS OF MUSEUMS AND ARCHAEOLOGICAL SITES - TOTAL RECEIPTS  
(2019, 2020, JANUARY- SEPTEMBER 2020, 2021)**

<b>I. VISITORS</b>					
Museums and Archaeological sites	2019	2020 <sup>(2)</sup>	JANUARY-SEPTEMBER		change 2021/2020
			2020 <sup>(2)</sup>	2021 <sup>(2)</sup>	
<b>Total number of visitors (A+B)</b>	<b>19,559,278</b>	<b>3,772,828</b>	<b>3,253,618</b>	<b>5,334,078</b>	<b>63.9%</b>
<b>A. Museums (C+E)</b>	<b>5,895,927</b>	<b>1,100,904</b>	<b>976,805</b>	<b>1,416,115</b>	<b>45.0%</b>
Acropolis Museum	1,755,435	325,969	294,016	369,519	25.7%
National Archaeological	608,876	98,175	86,996	124,063	42.6%
Ancient Olympia	159,348	21,956	19,394	23,627	21.8%
Palace of the Grand Master (Rhodes)	263,958	54,572	41,929	109,090	160.2%
Herakleion Archaeological (Crete)	660,533	63,027	55,012	96,063	74.6%
White Tower	251,760	62,007	56,187	51,651	-8.1%
Delphi	275,993	41,984	37,364	37,818	1.2%
Other museums	1,920,024	433,214	385,907	604,284	56.6%
<b>B. Archaeological Sites (D+F)</b>	<b>13,663,351</b>	<b>2,671,924</b>	<b>2,276,813</b>	<b>3,917,963</b>	<b>72.1%</b>
Epidavros <sup>(1)</sup>	535,751	103,532	84,159	136,081	61.7%
The Acropolis of Mycenae & Atreus' Treasure	502,619	78,839	68,463	110,952	62.1%
The Acropolis of Athens	3,593,586	620,132	541,167	840,584	55.3%
Sounio	337,544	100,319	85,032	123,014	44.7%
The Acropolis of Lindos	525,757	156,462	128,842	276,477	114.6%
Royal Tombs of Vergina	223,151	37,586	33,463	39,186	17.1%
Ancient Olympia	457,710	64,759	56,436	106,375	88.5%
Knossos (Crete)	949,192	175,927	146,105	343,407	135.0%
Phaistos (Crete)	121,796	31,885	26,894	36,967	37.5%
Ancient Korinthos <sup>(1)</sup>	214,023	31,981	27,230	39,313	44.4%
Mystras <sup>(1)</sup>	147,713	36,352	29,369	59,239	101.7%
Delphi	405,348	75,983	64,670	100,225	55.0%
Other archaeological sites	5,649,161	1,158,167	984,983	1,706,143	73.2%
<b>II. VISITORS WHO PAID TICKET</b>					
	2019	2020 <sup>(2)</sup>	JANUARY-SEPTEMBER		change
			2020 <sup>(2)</sup>	2021 <sup>(2)</sup>	2021/2020
<b>Total number of visitors who paid ticket (C+D)</b>	<b>12,434,987</b>	<b>2,268,397</b>	<b>1,931,526</b>	<b>3,757,386</b>	<b>94.5%</b>
C. Museums	3,345,997	605,426	530,572	919,040	73.2%
D. Archaeological sites	9,088,990	1,662,971	1,400,954	2,838,346	102.6%
<b>III. VISITORS WITH FREE ADMISSION TICKETS</b>					
	2019	2020 <sup>(2)</sup>	JANUARY-SEPTEMBER		change
			2020 <sup>(2)</sup>	2021 <sup>(2)</sup>	2021/2020
<b>Total number of visitors with free admission ticket (E+F)</b>	<b>7,124,291</b>	<b>1,504,431</b>	<b>1,322,092</b>	<b>1,576,692</b>	<b>19.3%</b>
E. Museums	2,549,930	495,478	446,233	497,075	11.4%
F. Archaeological sites	4,574,361	1,008,953	875,859	1,079,617	23.3%
<b>IV. RECEIPTS (euros)</b>					
	2019	2020 <sup>(2)</sup>	JANUARY-SEPTEMBER		change
			2020 <sup>(2)</sup>	2021 <sup>(2)</sup>	2021/2020
<b>Total Receipts (G+H)</b>	<b>130,938,846</b>	<b>21,176,036</b>	<b>17,680,907</b>	<b>41,772,179</b>	<b>136.3%</b>
G. Museums <sup>(3)</sup>	23,343,026	4,047,401	3,459,779	7,743,435	123.8%
H. Archaeological sites	107,595,820	17,128,635	14,221,128	34,028,744	139.3%

<sup>(1)</sup> Flat rate ticket, valid both for the museum and the archaeological site.

<sup>(2)</sup> The operation of Museums was suspended from March 14<sup>th</sup> until June 16<sup>th</sup> 2020 and again gradually from November 1<sup>st</sup> 2020 until May 13<sup>th</sup> 2021. The operation of Archaeological Sites was suspended from March 14<sup>th</sup> until May 17<sup>th</sup> 2020 and from November 7<sup>th</sup> 2020 until March 21<sup>st</sup> 2021, in the framework of the preventative measures against the Covid-19 pandemic.

<sup>(3)</sup> Revised data for 2020, due to transmission of additional data from administrative sources.

## EXPLANATORY NOTES

<b>Survey on Museums and Archaeological Sites Attendance</b>	The Survey on Museums and Archaeological Sites Attendance has been producing results since 1970. The survey collects data from the Hellenic Organization of Cultural Resources Development (HOCRED), supervised by the Ministry of Culture and Sports, on the number of visitors and the receipts from the tickets sold in the Museums and Archaeological sites of the country. The corresponding data for the Acropolis Museum is available from December 2009 onwards.
<b>Legal Framework</b>	The survey is conducted since 1970 on a regular basis and it produces results on a monthly and yearly basis, in compliance with the Joint Ministerial Decision 15189/B379/73.
<b>Reference Period</b>	1/9/2021 - 30/9/2021
<b>Methodology and Definitions</b>	The survey is conducted on a monthly basis from data mainly collected from the Hellenic Organization of Cultural Resources Development (HOCRED), supervised by the Ministry of Culture and Sports, on the number of visitors and the receipts from the tickets sold in the Museums and Archaeological sites of the Country. ELSTAT tabulates and presents the data for the whole of the Country, by month and by year.  <b>Number of flat rate tickets:</b>  From April 1999 onwards, in some museums and the nearby archaeological sites, in addition to the ordinary ticket, a new “flat rate ticket” was established, which is valid for both the museum and the nearby archaeological site. The total number of these flat rate tickets for <b>September 2021</b> was <b>76,400</b> .
<b>References</b>	More information on the Survey on Museums and Archaeological Sites Attendance and detailed time series are available on: <a href="http://www.statistics.gr/en/statistics/-/publication/SCI21/">http://www.statistics.gr/en/statistics/-/publication/SCI21/</a>