

## **SURVEYS ON SECONDARY GENERAL AND VOCATIONAL EDUCATION END OF SCHOOL YEAR 2022/2023**

The Hellenic Statistical Authority (ELSTAT) announces data on Secondary General and Vocational Education for the end of school year 2022/2023. Data refer to Lower and Upper Secondary Education Schools, Ecclesiastical Lower and Upper Secondary Education Schools and Second Chance Schools. Data on Vocational Upper Secondary Schools and Vocational Schools are also presented.

### **SECONDARY GENERAL EDUCATION**

Data on Lower and Upper Secondary Schools of General Education are as follows:

- **School units** in the school year 2022/2023 compared with 2021/2022 decreased by 0.1% in Lower Secondary Schools and increased by 0.3% in Upper Secondary Schools (Tables 2 and 4, respectively).
- **Teaching staff** in the school year 2022/2023 compared with 2021/2022 increased by 2.6% in Lower Secondary Schools and by 0.3% in Upper Secondary Schools (Tables 2 and 4, respectively).
- **Pupils enrolled** in the school year 2022/2023 compared with 2021/2022 decreased by 0.4% in Lower Secondary Schools and by 0.3% in Upper Secondary Schools (Tables 3 and 5, respectively).
- **Graduates** in the school year 2022/2023 compared with 2021/2022 increased by 3.6% in Lower Secondary Schools while no significant change was observed in Upper Secondary Schools (Tables 3 and 5, respectively).
- **The ratio of teaching staff to pupils** in the school year 2022/2023 was 1 teacher per 8.1 pupils in Lower Secondary Schools and 1 teacher per 9.7 pupils in Upper Secondary Schools, while for the school year 2021/2022 the corresponding ratio was 1 to 8.3 and 1 to 9.8 respectively (Tables 2, 3, 4 and 5).
- The **Region of Attiki** accounted for the largest share of pupils enrolled in Secondary Education in Greece, with 34.8% in Lower Secondary Schools and 38.0% in Upper Secondary Schools (Graphs 2 and 3 respectively).

#### **Information on methodological issues:**

Division of Sectoral Statistics  
Section of Statistics on Education & Sports  
Head of the Section: Dimitra Angelopoulou  
Tel: +30 213 135 2134  
e-mail: [d.angelopoulou@statistics.gr](mailto:d.angelopoulou@statistics.gr)

#### **Information for data provision:**

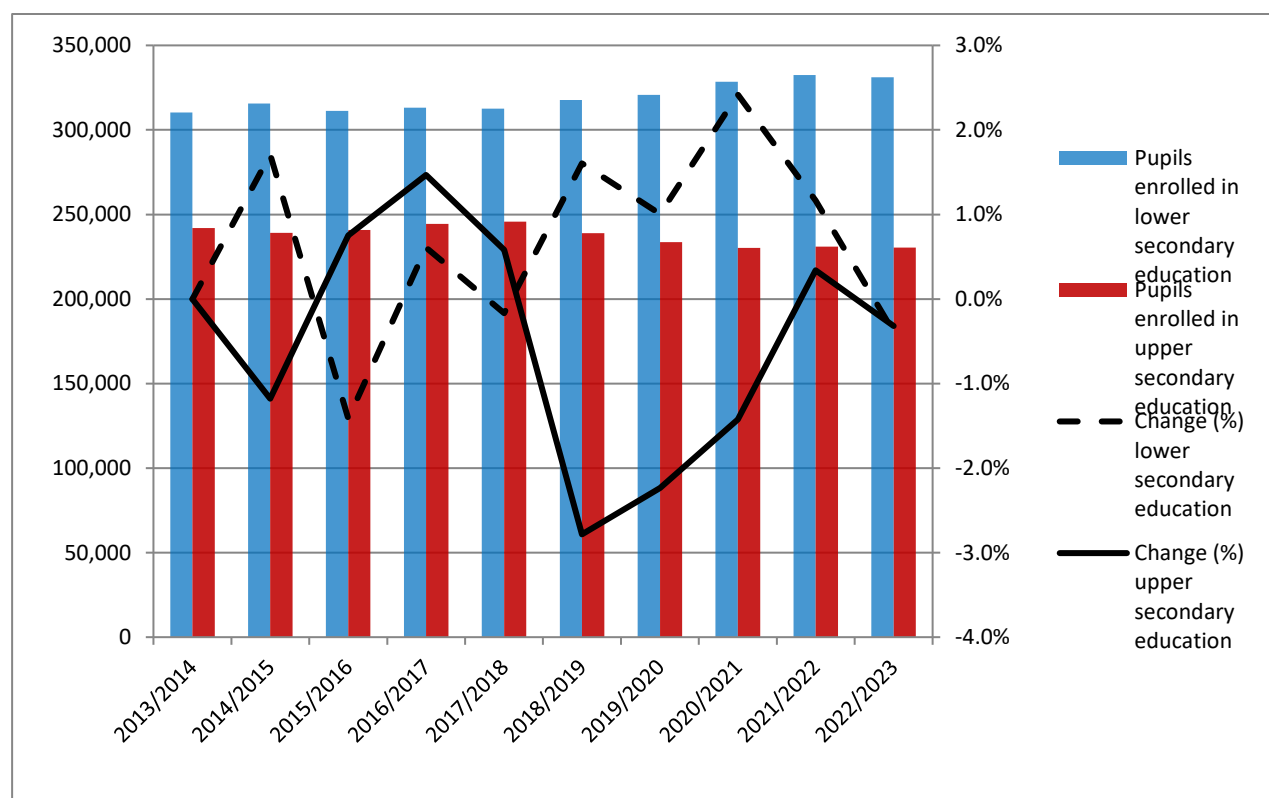
Tel. +30 213 135 2022, 2310  
email: [data.dissem@statistics.gr](mailto:data.dissem@statistics.gr)

Table 1 and Graph 1 depict the evolution of pupil population in Lower and Upper Secondary Education Schools during the period 2013/2014 - 2022/2023. Ecclesiastical Secondary Education Schools and Second Chance Schools are not included.

**Table 1**  
**Evolution of pupil population in Secondary Education 2013/14 – 2022/23**

School year	Pupils enrolled <sup>1</sup>	
	Lower secondary education schools	Upper secondary education schools
2013/2014	310,389	241,905
2014/2015	315,702	239,055
2015/2016	311,236	240,852
2016/2017	313,130	244,386
2017/2018	312,604	245,811
2018/2019	317,622	238,968
2019/2020	320,822	233,627
2020/2021	328,582	230,295
2021/2022	332,413	231,076
2022/2023	331,114	230,334

**Graph 1**  
**Evolution of pupil population in Secondary Education 2013/14 – 2022/23**



<sup>1</sup> Ecclesiastical Secondary Education schools and Second Chance schools are not included.

## A. LOWER SECONDARY SCHOOLS

Tables 2 and 3 present data on the school units, teaching staff, pupils enrolled and graduates of Lower Secondary Education Schools. Ecclesiastical Secondary Education Schools and Second Chance Schools are not included.

**Table 2. School units and teaching staff <sup>2</sup> (Lower Secondary Education)**

<i>By Type of school unit</i>						
School units	Number of school units			Teaching staff		
	2021/22	2022/23	Change (%)	2021/22	2022/23	Change (%)
<b>Public</b>	1,732	1,731	-0.1	37,396	38,313	2.5
<b>Private</b>	109	108	-0.9	2,419	2,556	5.7
<b>TOTAL</b>	<b>1,841</b>	<b>1,839</b>	<b>-0.1</b>	<b>39,815</b>	<b>40,869</b>	<b>2.6</b>
<i>By Region</i>						
Region (NUTS 2)	Number of school units			Teaching staff		
	2021/22	2022/23	Change (%)	2021/22	2022/23	Change (%)
<b>Anatoliki Makedonia, Thraki</b>	99	99	0.0	2,171	2,199	1.3
<b>Kentriki Makedonia</b>	296	296	0.0	6,463	6,551	1.4
<b>Dytiki Makedonia</b>	70	70	0.0	1,101	1,107	0.5
<b>Thessalia</b>	126	126	0.0	2,923	2,987	2.2
<b>Ipeiros</b>	83	82	-1.2	1,394	1,372	-1.6
<b>Ionia Nisia</b>	50	50	0.0	1,093	1,110	1.6
<b>Dytiki Ellada</b>	143	143	0.0	2,529	2,572	1.7
<b>Stereia Ellada</b>	119	119	0.0	1,953	2,047	4.8
<b>Peloponnisos</b>	110	111	0.9	2,017	2,083	3.3
<b>Attiki</b>	492	490	1.2	12,651	13,054	3.2
<b>Voreio Aigaio</b>	55	55	0.0	1,016	1,046	3.0
<b>Notio Aigaio</b>	88	88	0.0	1,786	1,900	6.4
<b>Kriti</b>	110	110	0.0	2,718	2,841	4.5
<b>TOTAL</b>	<b>1,841</b>	<b>1,839</b>	<b>-0.1</b>	<b>39,815</b>	<b>40,869</b>	<b>2.6</b>

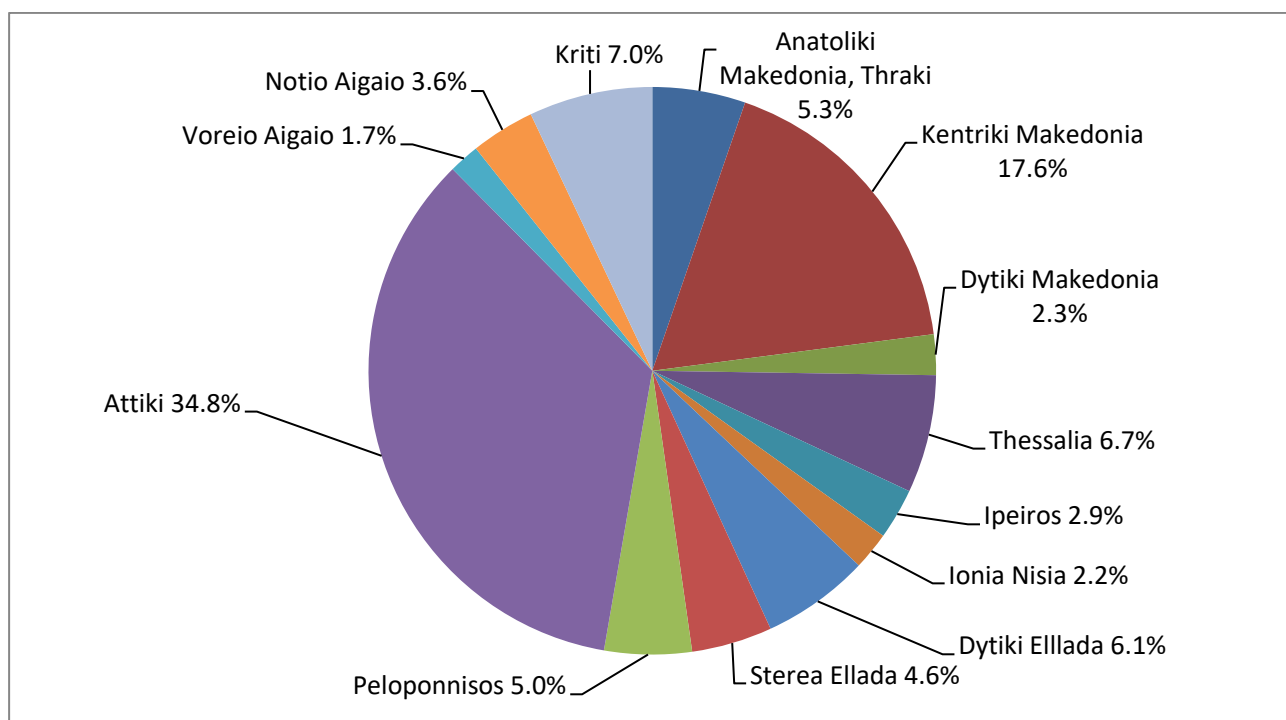
<sup>2</sup> Absent teachers are also included.

*Absent teachers* are the teachers with a fixed post in the school unit, who are absent for more than 20 days (due to illness, training, maternity leave, etc.) and their replacement is pending, as well as the teachers who are seconded to other administrative posts of the Ministry of Education, Religious Affairs and Sports or elsewhere.

**Table 3. Pupils enrolled and graduates by type of school unit and NUTS 2 Region  
(Lower Secondary Schools)**

<i>By Type of School Unit</i>						
School units	Pupils enrolled			Graduates		
	2021/22	2022/23	Change (%)	2021/22	2022/23	Change (%)
<b>Public</b>	312,078	310,707	-0.4	97,338	100,612	3.4
<b>Private</b>	20,335	20,407	0.4	6,219	6,706	7.8
<b>TOTAL</b>	<b>332,413</b>	<b>331,114</b>	<b>-0.4</b>	<b>103,557</b>	<b>107,318</b>	<b>3.6</b>
<i>By Region</i>						
Region (NUTS 2)	Pupils enrolled			Graduates		
	2021/22	2022/23	Change (%)	2021/22	2022/23	Change (%)
<b>Anatoliki Makedonia, Thraki</b>	17,750	17,562	-1.1	5,412	5,466	1.0
<b>Kentriki Makedonia</b>	58,874	58,396	-0.8	18,449	19,005	3.0
<b>Dytiki Makedonia</b>	7,725	7,647	-1.0	2,493	2,519	1.0
<b>Thessalia</b>	22,236	22,257	0.1	6,774	7,245	7.0
<b>Ipeiros</b>	9,478	9,627	1.6	2,920	3,060	4.8
<b>Ionia Nisia</b>	7,010	7,126	1.7	2,159	2,361	9.4
<b>Dytiki Ellada</b>	20,258	20,292	0.2	6,171	6,473	4.9
<b>Stereia Ellada</b>	15,221	15,213	-0.1	4,735	4,821	1.8
<b>Peloponnisos</b>	16,438	16,474	0.2	5,161	5,181	0.4
<b>Attiki</b>	116,545	115,390	-1.0	36,486	37,915	3.9
<b>Voreio Aigaio</b>	5,771	5,773	0.0	1,819	1,889	3.8
<b>Notio Aigaio</b>	11,826	12,039	1.8	3,781	3,871	2.4
<b>Kriti</b>	23,281	23,318	0.2	7,197	7,512	4.4
<b>TOTAL</b>	<b>332,413</b>	<b>331,114</b>	<b>-0.4</b>	<b>103,557</b>	<b>107,318</b>	<b>3.6</b>

**Graph 2. Percentage distribution of pupils enrolled in Lower Secondary Schools  
by NUTS 2 Region, school year 2022/2023**



## B. UPPER SECONDARY SCHOOLS

Tables 4 and 5 present data on the school units, teaching staff, pupils enrolled and graduates of Upper Secondary Education Schools. Ecclesiastical Secondary Education Schools are not included.

**Table 4. School units and teaching staff <sup>3</sup> (Upper Secondary Schools)**

<i>By Type of School Units</i>						
School units	Number of school units			Teaching staff		
	2021/22	2022/23	Change (%)	2021/22	2022/23	Change (%)
<b>Public</b>	1,268	1,269	0.1	21,511	21,432	-0.4
<b>Private</b>	103	106	2.9	2,055	2,197	6.9
<b>TOTAL</b>	<b>1,371</b>	<b>1,375</b>	<b>0.3</b>	<b>23,566</b>	<b>23,629</b>	<b>0.3</b>
<i>By Region</i>						
Region (NUTS 2)	Number of school units			Teaching staff		
	2021/22	2022/23	Change (%)	2021/22	2022/23	Change (%)
<b>Anatoliki Makedonia, Thraki</b>	63	64	1.6	1,036	1,000	-3.5
<b>Kentriki Makedonia</b>	212	212	0.0	3,917	3,970	-1.4
<b>Dytiki Makedonia</b>	38	38	0.0	545	543	-0.4
<b>Thessalia</b>	99	99	0.0	1,481	1,446	-2.4
<b>Ipeiros</b>	52	52	0.0	781	776	-0.6
<b>Ionia Nisia</b>	36	36	0.0	483	475	-1.7
<b>Dytiki Ellada</b>	100	102	2.0	1,477	1,471	-0.4
<b>Stereia Ellada</b>	93	93	0.0	1,063	1,043	-1.9
<b>Peloponnisos</b>	91	91	0.0	1,283	1,276	-0.5
<b>Attiki</b>	395	396	0.3	8,812	8,934	1.4
<b>Voreio Aigaio</b>	43	42	-2.3	466	417	-10.5
<b>Notio Aigaio</b>	69	69	0.0	728	728	0.0
<b>Kriti</b>	80	81	1.3	1,494	1,550	3.7
<b>TOTAL</b>	<b>1,371</b>	<b>1,375</b>	<b>0.3</b>	<b>23,566</b>	<b>23,629</b>	<b>0.3</b>

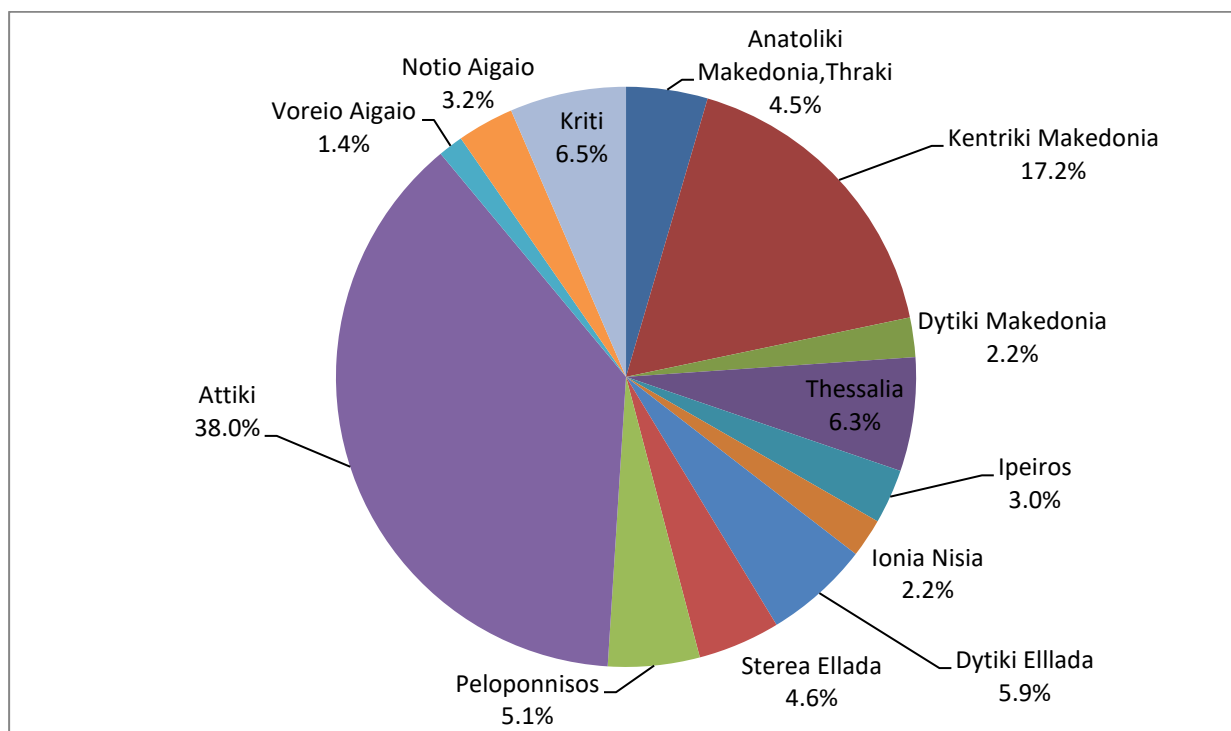
<sup>3</sup> Absent teachers are also included.

*Absent teachers* are the teachers with a fixed post in the school unit, who are absent for more than 20 days (due to illness, training, maternity leave, etc.) and their replacement is pending, as well as the teachers who are seconded to other administrative posts of the Ministry of Education, Religious Affairs and Sports or elsewhere.

**Table 5. Pupils enrolled and graduates by type of school unit and NUTS 2 Region  
(Upper Secondary Schools)**

<i>By Type of School Unit</i>						
School units	Pupils enrolled			Graduates		
	2021/22	2022/23	Change (%)	2021/22	2022/23	Change (%)
<b>Public</b>	214,205	212,753	-0.7	67,669	67,643	0.0
<b>Private</b>	16,871	17,581	4.2	5,270	5,321	1.0
<b>TOTAL</b>	<b>231,076</b>	<b>230,334</b>	<b>-0.3</b>	<b>72,939</b>	<b>72,964</b>	<b>0.0</b>
Region (NUTS 2)	Pupils enrolled			Graduates		
	2021/22	2022/23	Change (%)	2021/22	2022/23	Change (%)
<b>Anatoliki Makedonia, Thraki</b>	10,795	10,458	-3.1	3,460	3,408	-1.5
<b>Kentriki Makedonia</b>	39,474	39,556	0.2	12,321	12,410	0.7
<b>Dytiki Makedonia</b>	5,145	5,072	-1.4	1,630	1,589	-2.5
<b>Thessalia</b>	14,705	14,604	-0.7	4,557	4,647	2.0
<b>Ipeiros</b>	7,035	7,009	-0.4	2,138	2,144	0.3
<b>Ionia Nisia</b>	5,024	4,970	-1.1	1,639	1,567	-4.4
<b>Dytiki Ellada</b>	13,845	13,501	-2.5	4,470	4,442	-0.6
<b>Stereia Ellada</b>	10,830	10,560	-2.5	3,485	3,394	-2.6
<b>Peloponnisos</b>	11,873	11,763	-0.9	3,792	3,781	-0.3
<b>Attiki</b>	87,169	87,416	0.3	27,493	27,785	1.1
<b>Voreio Aigaio</b>	3,578	3,213	-10.2	1,157	1,045	-9.7
<b>Notio Aigaio</b>	7,193	7,279	1.2	2,268	2,266	-0.1
<b>Kriti</b>	14,410	14,933	3.6	4,529	4,486	-0.9
<b>TOTAL</b>	<b>231,076</b>	<b>230,334</b>	<b>-0.3</b>	<b>72,939</b>	<b>72,964</b>	<b>0.0</b>

**Graph 3. Percentage distribution of pupils enrolled in Upper Secondary Schools  
by NUTS 2 Region, school year 2022/2023**



## ECCLESIASTICAL SECONDARY EDUCATION (LOWER AND UPPER SECONDARY SCHOOLS)

The Ecclesiastical Lower and Upper Secondary Schools constitute a separate part of Secondary General Education. Tables 6, 7 and 8 present data on the school units, teaching staff, pupils enrolled and graduates of Ecclesiastical Lower and Upper Secondary Schools.

- **School units** decreased by 14.3% in Ecclesiastical Lower Secondary Schools and by 20.0% in Ecclesiastical Upper Secondary Schools in the school year 2022/2023 compared with 2021/2022 (Tables 6 and 7, respectively).
- **Teaching staff** decreased by 26.0% in both Lower and Upper Secondary Ecclesiastical Schools in the school year 2022/2023 compared with 2021/2022 (Table 8).
- **Pupils enrolled** increased by 5.3% in Ecclesiastical Lower Secondary Schools and decreased by 20.2% in Ecclesiastical Upper Secondary Schools in the school year 2022/2023 compared with 2021/2022 (Tables 6 and 7, respectively).
- **Graduates** decreased by 11.9% in Ecclesiastical Lower Secondary Schools and by 11.5% in Ecclesiastical Upper Secondary Schools in the school year 2022/2023 compared with 2021/2022 (Tables 6 and 7, respectively).

**Table 6. Ecclesiastical Lower Secondary Schools**

Pupils enrolled, Graduates and number of school units			
	School Year		
	2021/22	2022/23	Change (%)
<b>Pupils enrolled</b>	265	279	5.3
<b>Graduates</b>	84	74	-11.9
<b>Number of School Units<sup>4</sup></b>	7	6	-14.3

**Table 7. Ecclesiastical Upper Secondary Schools**

Pupils enrolled, Graduates and number of school units			
	School Year		
	2021/22	2022/23	Change (%)
<b>Pupils enrolled</b>	494	394	-20.2
<b>Graduates</b>	156	138	-11.5
<b>Number of School Units<sup>5</sup></b>	10	8	-20.0

**Table 8. Teaching Staff in Ecclesiastical Secondary Education**

Teaching Staff			
	School Year		
	2021/22	2022/23	Change (%)
<b>TOTAL</b>	169	125	-26.0

<sup>4</sup> All Lower Secondary Schools include Upper Secondary School classes.

<sup>5</sup> Lower Secondary school units that host Upper Secondary school classes are included.

## SECOND CHANCE SCHOOLS

Second Chance Schools are Lower Secondary Education schools addressed to pupils that are over 18 years old. Tables 9, 10 and 11 present data on the school units, teaching staff, pupils enrolled and graduates of Second Chance Schools.

- **School units** increased by 1.0% in the school year 2022/2023 compared with 2021/2022 (Table 9)
- **Teaching staff** increased by 1.0% in the school year 2022/2023 compared with 2021/2022 (Table 9)
- **Pupils enrolled** decreased by 4.8% in the school year 2022/2023 compared with 2021/2022 (Table 10)
- **Graduates** decreased by 15.2 % in the school year 2022/2023 compared with 2021/2022 (table 10)
- **Foreign pupils** increased by 16.5% in the school year 2022/2023 compared with 2021/2022 (table 11).

**Table 9. School units and teaching staff of Second Chance Schools**

	Number of school units			Teaching staff		
	2021/22	2022/23	Change %	2021/22	2022/23	Change %
<b>TOTAL</b>	<b>100</b>	<b>101</b>	<b>1.0</b>	<b>1,161</b>	<b>1,173</b>	<b>1.0</b>

**Table 10. Pupils enrolled and graduates of Second Chance Schools**

	Pupils enrolled			Graduates		
	2021/22	2022/23	Change %	2021/22	2022/23	Change %
<b>TOTAL</b>	<b>5,430</b>	<b>5,168</b>	<b>-4.8</b>	<b>1,933</b>	<b>1,639</b>	<b>-15.2</b>

**Table 11. Foreign pupils in Second Chance Schools by citizenship**

Citizenship	Total		
	2021/22	2022/23	Change %
<b>TOTAL</b>	<b>1,249</b>	<b>1,455</b>	<b>16.5</b>
<b>EU Member State</b>	154	170	10.4
<b>Outside the EU</b>	1,091	1,281	17.4
<b>Unknown citizenship</b>	4	4	0.0



## SECONDARY VOCATIONAL EDUCATION

In Secondary Vocational Education pertaining to Vocational Upper Secondary Schools (EPAL) and Vocational Schools (EPAS) the following are observed:

- **School units** increased by 4.9% in the school year 2022/2023 compared with 2021/2022 (Table 13).
- **Teaching staff** increased by 0.3% in the school year 2022/2023 compared with 2021/2022 (Table 13)
- **Pupils enrolled** decreased by 0.8% in the school year 2022/2023 compared with 2021/2022 (Table 14)
- **Graduates** decreased by 3.8% in the school year 2021/2022 compared with 2020/2021 (Table 14)
- **The ratio of teaching staff to pupils** in both school years 2022/2023 and 2021/2022 was 1 teacher per 8.2 pupils (Tables 13 and 14)
- The **Region of Attiki** accounted for 27.3% of the total pupil population of all the EPAL and EPAS in Greece in the school year 2022/2023 (Graph 6).

Table 12 depicts the evolution of pupil population in Secondary Vocational Education during the period 2013/2014 to 2022/2023.

**Table 12**  
**Evolution of pupil population in Secondary Vocational Education**  
**2013/14 – 2022/23**

School Year	Pupils Enrolled
2013/2014	109,917
2014/2015	101,761
2015/2016	98,772
2016/2017	98,568
2017/2018	97,452
2018/2019	103,440
2019/2020	109,625
2020/2021	116,571
2021/2022	114,013
2022/2023	113,060

Table 13 presents data on the school units and teaching staff in Secondary Vocational Education.

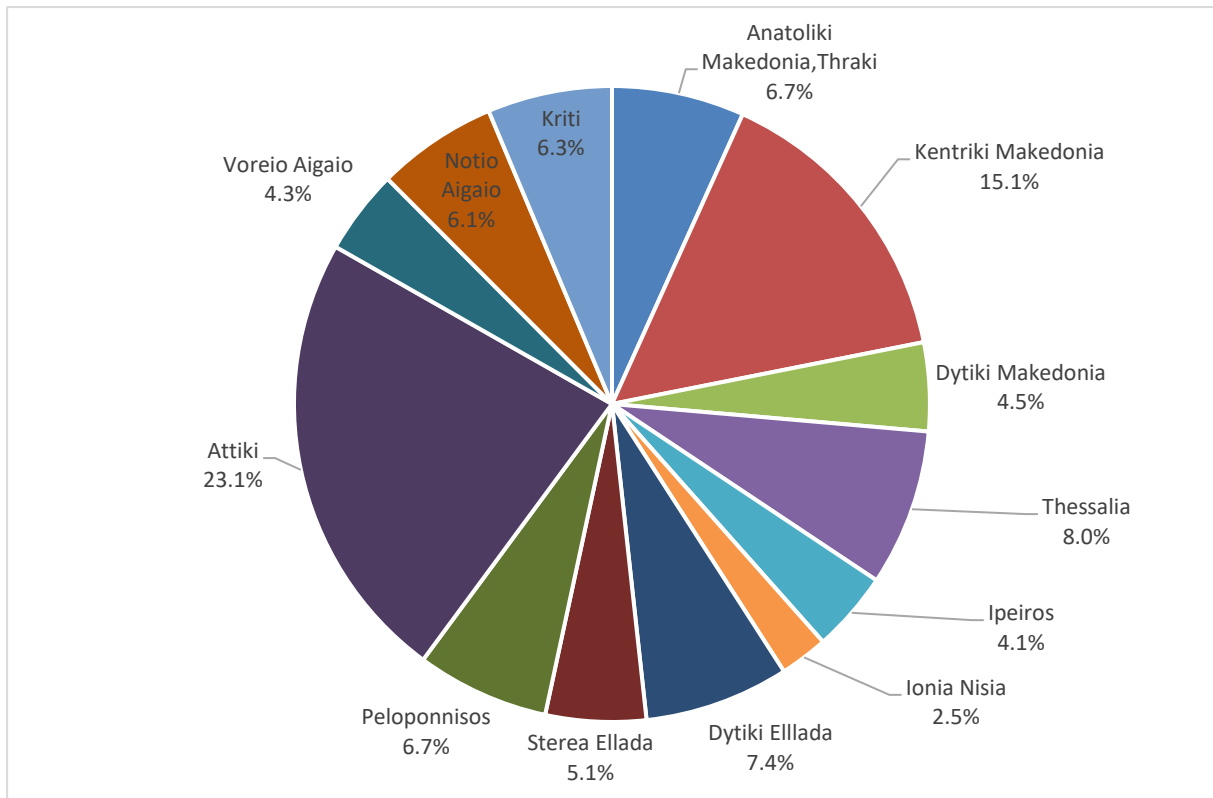
**Table 13. School units and teaching staff<sup>6</sup>**

<i>By Type of school unit</i>						
School units	Number of school units			Teaching staff		
	2021/22	2022/23	Change (%)	2021/22	2022/23	Change (%)
EPAL of the Ministry of Education, Religious Affairs and Sports	416	439	5.5	12,372	12,492	1.0
EPAS of the Ministry of Labour and Social Security	50	50	0.0	1,412	1,339	-5.2
<b>TOTAL</b>	<b>466</b>	<b>489</b>	<b>4.9</b>	<b>13,784</b>	<b>13,831</b>	<b>0.3</b>
<i>By Region</i>						
Region (NUTS 2)	Number of school units			Teaching staff		
	2021/22	2022/23	Change (%)	2021/22	2022/23	Change (%)
Anatoliki Makedonia, Thraki	32	33	3.1	928	949	2.3
Kentriki Makedonia	71	74	4.2	2,555	2,521	-1.3
Dytiki Makedonia	21	22	4.8	593	575	-3.0
Thessalia	38	39	2.6	1,188	1,152	-3.0
Ipeiros	19	20	5.3	526	495	-5.9
Ionia Nisia	11	12	9.1	256	249	-2.7
Dytiki Ellada	34	36	5.9	826	866	4.8
Stereia Ellada	24	25	4.2	632	626	-0.9
Peloponnisos	32	33	3.1	642	674	5.0
Attiki	107	113	5.6	3,376	3,393	0.5
Voreio Aigaio	21	21	0.0	492	529	7.5
Notio Aigaio	27	30	11.1	691	734	6.2
Kriti	29	31	6.9	1,079	1,068	-1.0
<b>TOTAL</b>	<b>466</b>	<b>489</b>	<b>4.9</b>	<b>13,784</b>	<b>13,831</b>	<b>0.3</b>

<sup>6</sup> Absent teachers are also included,

*Absent teachers* are the teachers with a fixed post in the school unit, who are absent for more than 20 days (due to illness, training, maternity leave, etc.) and their replacement is pending, as well as the teachers who are seconded to other administrative posts of the Ministry of Education, Religious Affairs and Sports or elsewhere.

**Graph 4. Percentage distribution of school units by NUTS 2 Region, school year 2022/23**



**Graph 5. Teaching staff by NUTS 2 Region, school year 2022/23**

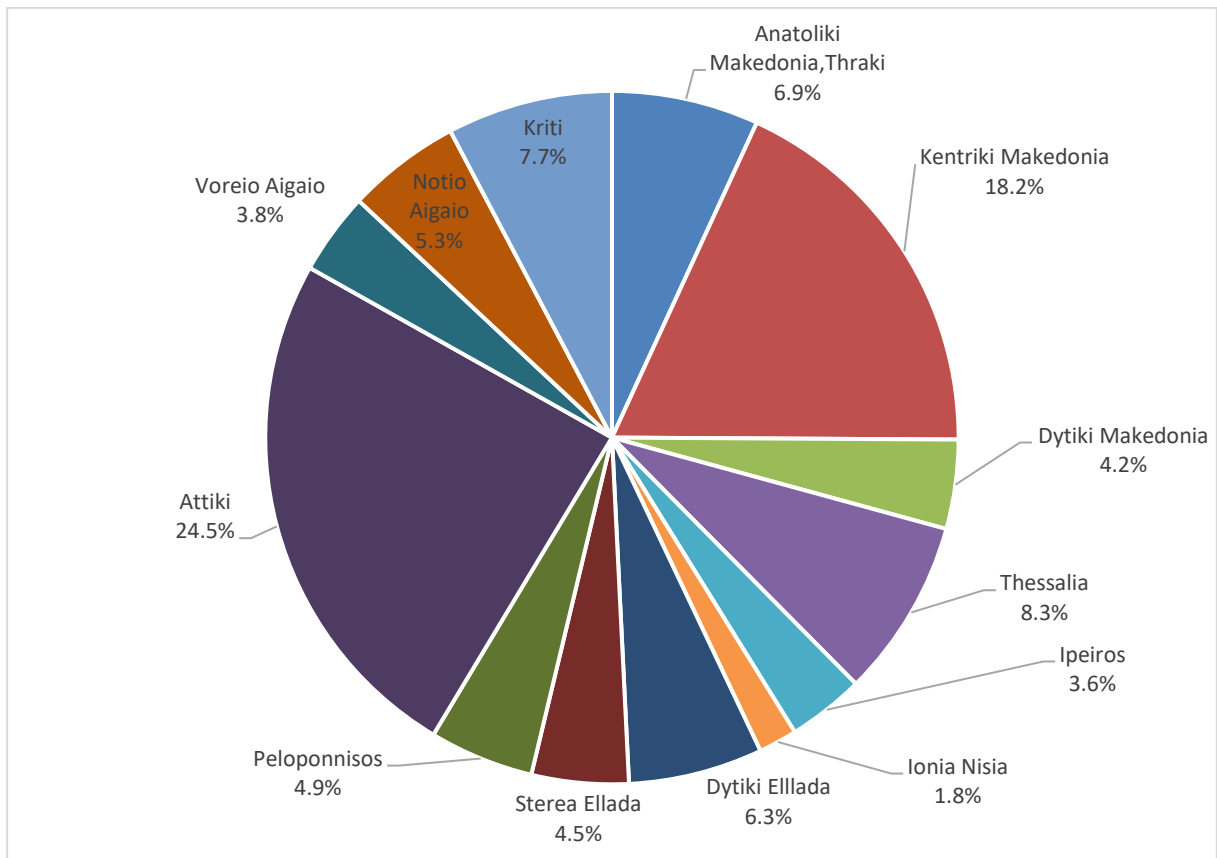
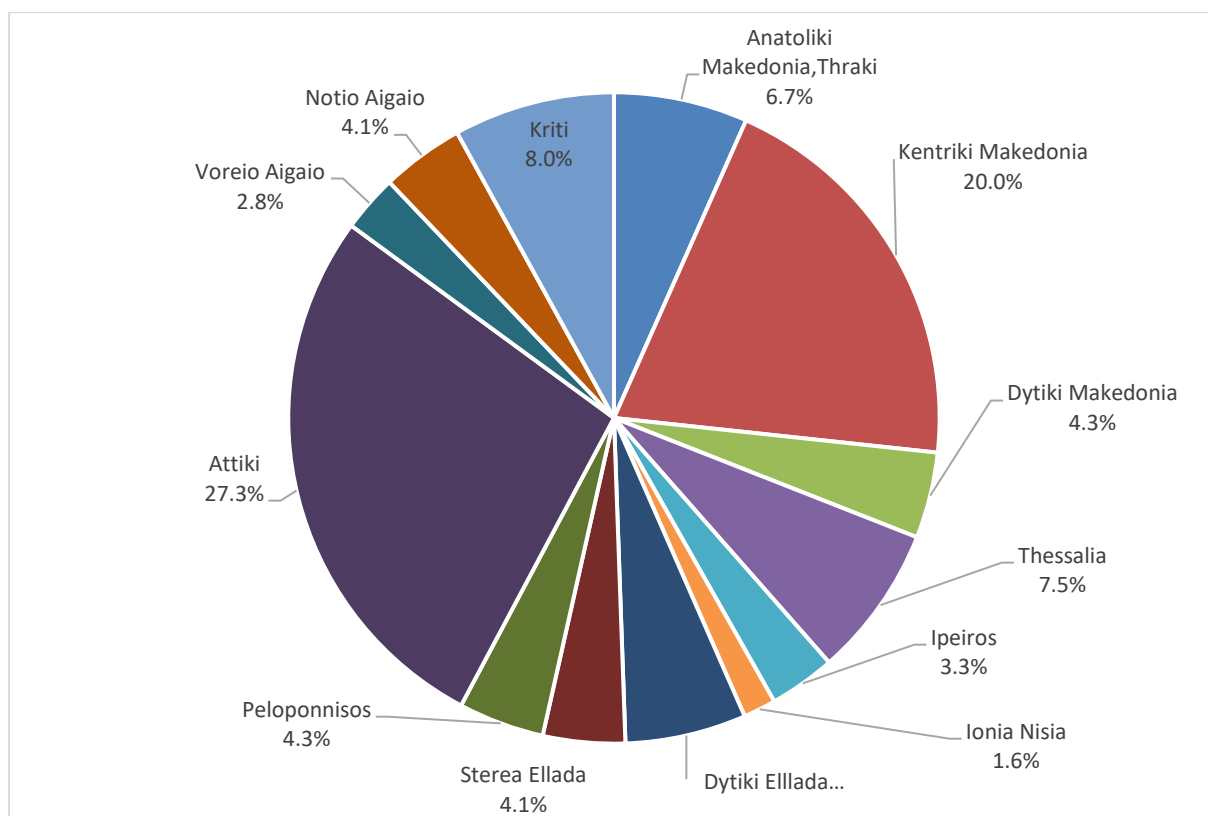


Table 14 presents data on pupils enrolled and graduates in Secondary Vocational Education.

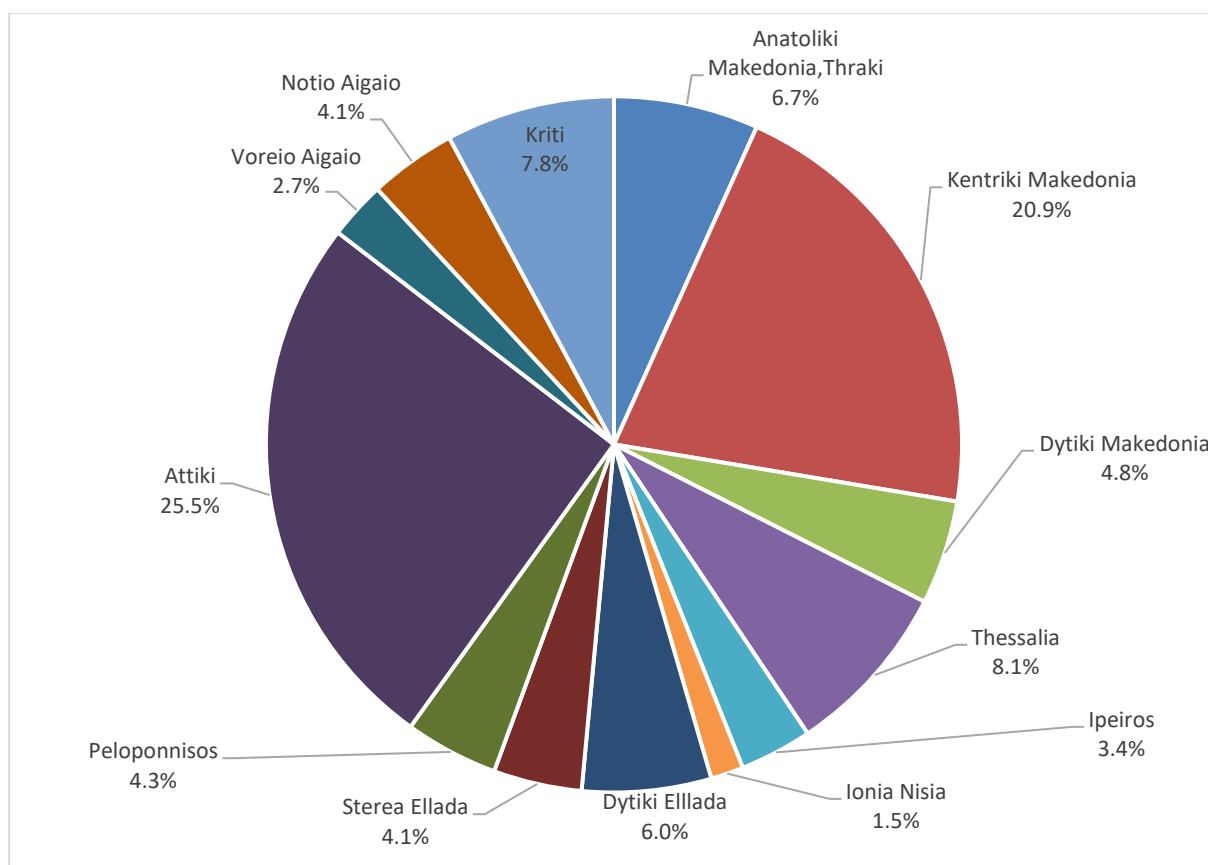
**Table 14. Pupils enrolled and graduates by type of school unit and NUTS 2 Region**

<i>By Type of School Unit</i>						
School units	Pupils enrolled			Graduates		
	2021/22	2022/23	Change (%)	2021/22	2022/23	Change (%)
EPAL of the Ministry of Education and Religious Affairs	106,782	106,810	0.0	31,799	31,069	-2.3
EPAS of the Ministry of Labour and Social Affairs	7,137	6,250	-12.4	2,819	2,239	-20.6
<b>TOTAL</b>	<b>113,919</b>	<b>113,060</b>	<b>-0.8</b>	<b>34,618</b>	<b>33,308</b>	<b>-3.8</b>
<i>By Region</i>						
Region (NUTS 2)	Pupils enrolled			Graduates		
	2021/22	2022/23	Change (%)	2021/22	2022/23	Change (%)
Anatoliki Makedonia, Thraki	7,440	7,520	1.1	2,263	2,241	-1.0
Kentriki Makedonia	23,200	22,666	-2.3	7,518	6,961	-7.4
Dytiki Makedonia	5,074	4,825	-4.9	1,800	1,611	-10.5
Thessalia	8,710	8,534	-2.0	2,816	2,711	-3.7
Ipeiros	3,744	3,723	-0.6	1,183	1,120	-5.3
Ionia Nisia	1,800	1,830	1.7	481	506	5.2
Dytiki Ellada	6,723	6,796	1.1	2,010	1,999	-0.5
Stereia Ellada	4,665	4,612	-1.1	1,436	1,368	-4.7
Peloponnisos	4,749	4,821	1.5	1,335	1,447	8.4
Attiki	30,739	30,842	0.3	8,723	8,487	-2.7
Voreio Aigaio	3,167	3,199	1.0	951	894	-6.0
Notio Aigaio	4,499	4,645	3.2	1,239	1,350	9.0
Kriti	9,409	9,047	-3.8	2,863	2,613	-8.7
<b>TOTAL</b>	<b>113,919</b>	<b>113,060</b>	<b>-0.8</b>	<b>34,618</b>	<b>33,308</b>	<b>-3.8</b>

**Graph 6. Pupils enrolled by NUTS 2 Region, school year 2022/23**



**Graph 7. Graduates by NUTS 2 Region, school year 2022/23**



## EXPLANATORY NOTES

**Surveys on General and Vocational Secondary Education** The surveys in Secondary General and Vocational Education are conducted on a yearly basis aiming at collecting data on the number of pupils enrolled, the school units and teaching staff. These surveys are carried out on an annual basis in all Member States of the European Union.

Secondary General Education includes Lower and Upper Secondary Schools of General Education, Ecclesiastical Secondary Schools and Second Chance Schools.

Secondary Vocational Education includes:

- Vocational Upper Secondary Schools (EPAL) and
- Vocational Schools (EPAS)

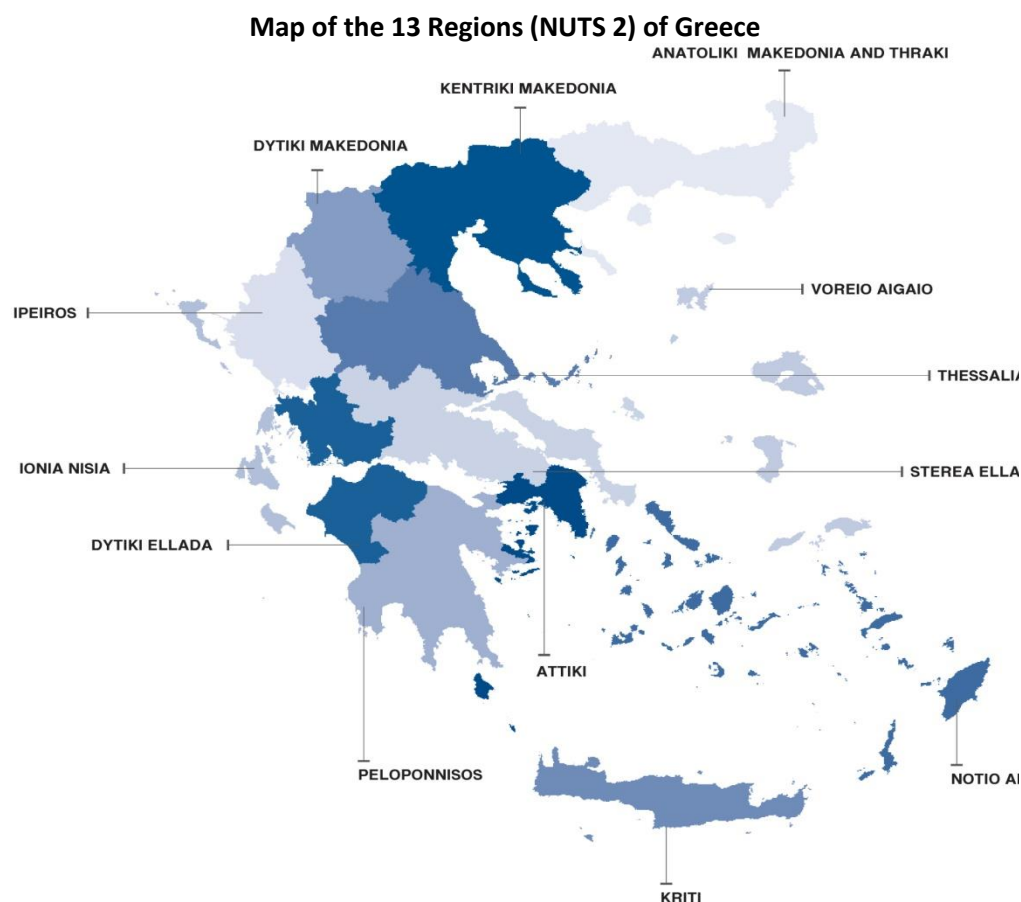
EPAL and EPAS are under the competency of the Ministry of Education, Religious Affairs and Sports, and the Ministry of Labour and Social Security.

**Legal Frame** The surveys are conducted by virtue of Regulation 452/2008 of the European Parliament and the Council and implementing Regulation 912/2013 of the European Commission.

**Statistical Units** The school unit.

**Coverage** Greece total.

**Geographical Classification** The geographical classification is based on Nomenclature of Territorial Units for Statistics.



<b>Dissemination of results</b>	The data are posted on a yearly basis on the website of ELSTAT.
<b>Reference period</b>	The data of the surveys refer to the end of school year 2022/2023.
<b>Methodology and coverage</b>	<p>The Secondary Education surveys are carried out on an annual basis and include all school units of the country.</p> <p>From the school year 2021/2022 data for both public and private Secondary Education Schools are derived from the “MySchool” e-platform supervised by the Ministry of Education, Religious Affairs and Sports. Questionnaires were sent to the Vocational Schools (EPAS) supervised by other Ministries and the Second Chance Schools.</p>
<b>References</b>	<p>More information, such as tables with the survey results, samples of questionnaires, etc., on the Secondary Education surveys can be found on the webpage of ELSTAT <a href="http://www.statistics.gr">www.statistics.gr</a> at the link: “Statistics” / Population and Social Conditions / Education / Lower Secondary Education Schools (Beginning – End of school year) or Upper Secondary Education Schools (Beginning – End of school year)” or “Secondary Vocational Education (Beginning – End of school year)” or “Second Chance Schools”.</p>