



CONSUMER PRICE INDEX: October 2025, annual inflation 2.0%

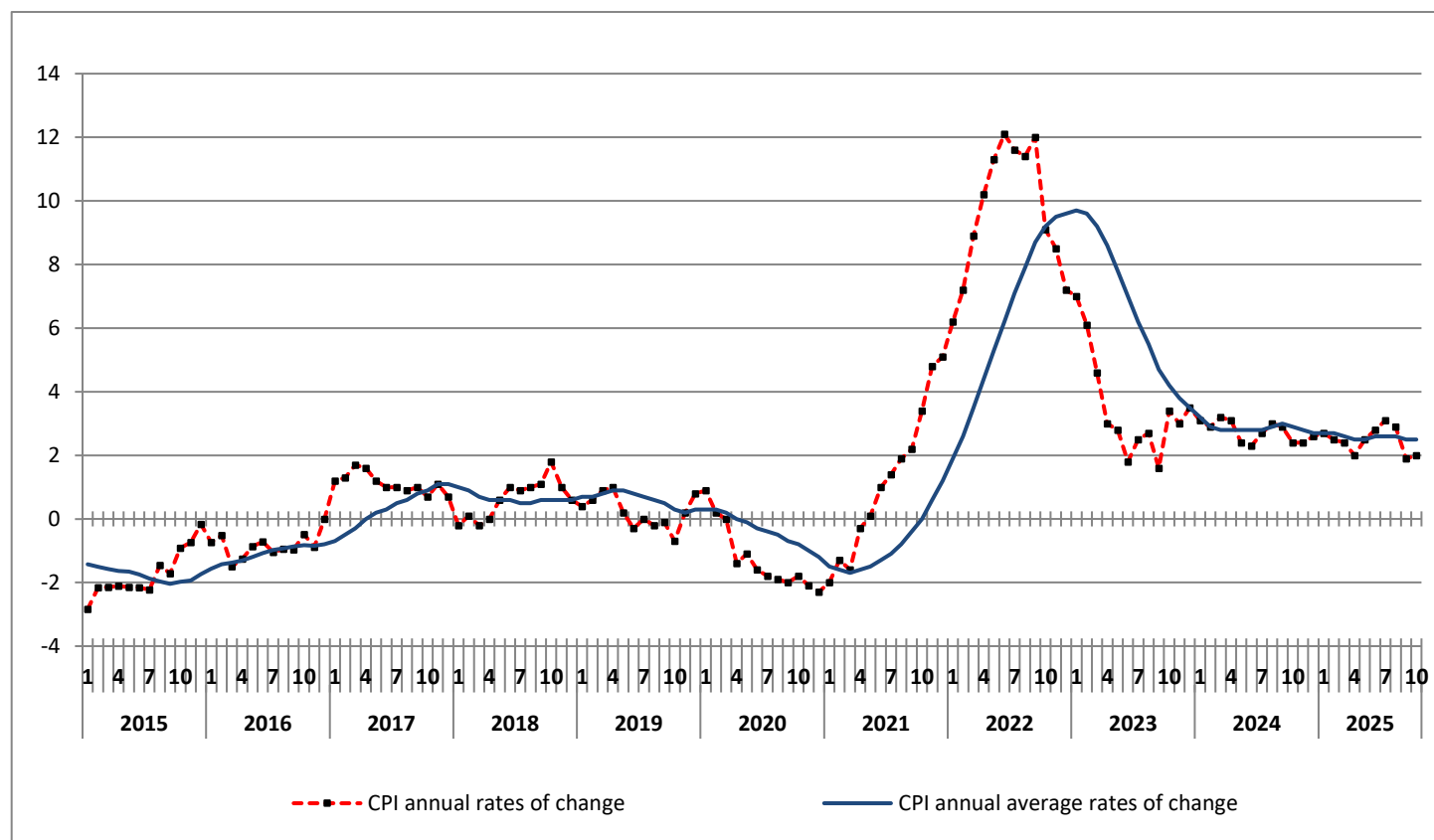
The evolution of the Consumer Price Index (CPI) of October 2025 (reference year 2020=100.0) is depicted as follows:

The CPI in October 2025 compared with October 2024 increased by 2.0%. In October 2024, the annual rate of change of the CPI was 2.4% (Table 2).

The CPI in October 2025 compared with September 2025, increased by 0.1%. In October 2024, the monthly rate of change of the CPI was 0.0% (Table 1).

The average CPI for the twelve - month period from November 2024 to October 2025, compared with the corresponding index for the period November 2023 to October 2024 increased by 2.5%. The annual rate of change of the average CPI between the twelve - month period November 2023 to October 2024 in comparison to the period November 2022 to October 2023 was 2.9% (Table 3).

Graph 1. Annual and annual average rates of change (%) of CPI



Information on methodological issues:
Population, Employment and
Cost of Living Statistics Division
Section of Retail Price Indices
Acting Head of Section: A. Kourtaki
Tel: +30 213 135 2128
email: a.kourtaki@statistics.gr

Information for data provision:
Tel: +30 213 135 2022, 2308, 2310
email: data.dissem@statistics.gr

Analysis of changes of the CPI: October 2025

I. Monthly rates of change: October 2025 compared with September 2025 (Tables 1, 4)

The 0.1% increase of the Overall CPI in October 2025, compared with the corresponding index in September 2025 is, mainly, due to the changes in the groups of goods and services as follows:

1. An increase of:

- 0.9% in the group Food and non-alcoholic beverages, due to the increase, mainly, in the prices of: *other bakery products, beef, pork, lamb and goat, fresh fruit, fresh vegetables*. This increase was partly offset by the decrease, mainly, in the prices of: *fresh fish, olive oil, preserved or processed vegetables, coffee*.
- 0.5% in the group Alcoholic beverages and tobacco, due to the increase, mainly, in the prices of *alcoholic beverages (not served)*.
- 0.4% in the group Housing, due to the increase, mainly, in the prices of: *rentals for dwellings, electricity*. This increase was partly offset by the decrease, mainly, in the prices of *heating oil*.
- 1.1% in the group Household equipment, due to the increase, mainly, in the prices of: *household furniture, non-durable household articles*.
- 0.4% in the group Health, due to the increase, mainly, in the prices of: *medical-dental and paramedical services, hospital care*.
- 0.6% in the group Recreation and culture, due to the increase, mainly, in the prices of *cultural services*.
- 0.8% in the group Hotel-Cafés-Restaurants, due to the increase, mainly, in the prices of: *restaurants-confectioneries-cafes-buffets*. This increase was partly offset by the decrease, mainly, in the prices of *hotels-motels-inns*.
- 0.3% in the group Miscellaneous goods and services, due to the decrease, mainly, in the prices of *hairdressing salons and personal grooming establishments*.

2. A decrease of:

- 2.0% in the group Clothing and footwear, due to the decrease in the prices of clothing and footwear.
- 1.9% in the group Transport, due to the decrease, mainly, in the prices of: *petrol, other services for motorcars – motorcycles, tickets for passenger transport by air*.
- 0.3% in the group Communication, due to the decrease, mainly, in the prices of *telephone services*.

II. Annual rates of change: October 2025 compared with October 2024 (Tables 2, 5)

The 2.0% increase of the Overall CPI in October 2025, compared with the corresponding index in October 2024 is, mainly, due to the changes in the groups of goods and services as follows:

1. An increase of:

- 2.3% in the group Food and non-alcoholic beverages, due to the increase, mainly, in the prices of: *bread and cereals, meat, fresh fish, milk-cheese and eggs, fruit, chocolates-chocolate products, confectionery products, coffee, fruit and vegetable juices*. This increase was partly offset by the decrease, mainly, in the prices of: *olive oil, vegetables*.
- 1.8% in the group Alcoholic beverages and tobacco, due to the increase, mainly, in the prices of: *alcoholic beverages (not served), cigarettes*.
- 1.9% in the group Clothing and footwear, due to the increase in the prices of clothing and footwear.
- 1.4% in the group Housing, due to the increase, mainly, in the prices of: *rentals for dwellings, services for the repair and maintenance of the dwelling, miscellaneous services relating to the dwelling*. This increase was partly offset by the decrease, mainly, in the prices of: *electricity, natural gas, heating oil*.
- 0.7% in the group Household equipment, due to the increase, mainly, in the prices of: *domestic services, household appliances and repair*.
- 0.6% in the group Health, due to the increase, mainly, in the prices of: *medical-dental and paramedical services, hospital care*. This increase was partly offset by the decrease, mainly, in the prices of *pharmaceutical products*.
- 0.7% in the group Transport, due to the increase, mainly, in the prices of: *new motorcars, spare parts and accessories for motorcars, maintenance and repair of motorcars-motorcycles, other services for motorcars – motorcycles, tickets for passenger transport by air*. This decrease was partly offset by the increase, mainly, in the prices of: *second hand motorcars, fuels and lubricants*.
- 0.8% in the group Communication, due to the increase, mainly, in the prices of *telephone services*.
- 1.0% in the group Recreation and culture, due to the increase, mainly, in the prices of: *major durables for recreation and culture, cultural services, package holidays*. This increase was partly offset by the decrease, mainly, in the prices of *audiovisual and information processing equipment*.
- 2.8% in the group Education, due to the increase, mainly, in the prices of: *fees of pre-primary and primary education, fees of secondary education*.
- 6.5% in the group Hotel-Cafés-Restaurants, due to the increase, mainly, in the prices of: *restaurants-confectioneries-cafes-buffets, hotels-motels-inns*.
- 0.5% in the group Miscellaneous goods and services, due to the increase, mainly, in the prices of: *hairdressing salons and personal grooming establishments, private insurance connected with health, other services*. This increase was partly offset by the decrease, mainly, in the prices of: *other appliances and articles for personal care, motor vehicle insurance*.

Table 1. Monthly rates of change of CPI
(Reference year: 2020=100.0)

Main groups of goods and services	Weights 2025 (%)	2025	2025	Rate of change %	2024	2024	Rate of change %
		October	September		October	September	
1. Food & non-alcoholic beverages	209.28	135.02	133.88	0.9	131.93	131.97	0.0
2. Alcoholic beverages and tobacco	34.20	107.97	107.43	0.5	106.08	106.35	-0.3
3. Clothing and footwear	48.18	131.45	134.18	-2.0	129.00	127.53	1.2
4. Housing	138.63	126.27	125.78	0.4	124.51	125.48	-0.8
5. Household equipment	43.38	114.97	113.68	1.1	114.20	113.19	0.9
6. Health	77.51	112.45	111.99	0.4	111.72	111.87	-0.1
7. Transport	145.29	123.30	125.63	-1.9	122.44	122.27	0.1
8. Communication	41.36	94.06	94.34	-0.3	93.33	92.89	0.5
9. Recreation and culture	40.53	107.65	107.04	0.6	106.54	105.94	0.6
10. Education	34.86	112.54	112.45	0.1	109.51	109.47	0.0
11. Hotels-Cafés-Restaurants	117.76	129.28	128.30	0.8	121.40	121.20	0.2
12. Miscellaneous goods and services	69.02	108.24	107.94	0.3	107.69	108.35	-0.6
Overall Index	1000.0	122.16	122.06	0.1	119.79	119.76	0.0

Note: The indices are rounded up to two decimal figures when published and percentage changes up to one decimal figure when published.

Graph 2. Annual and monthly rates of change (%) of CPI

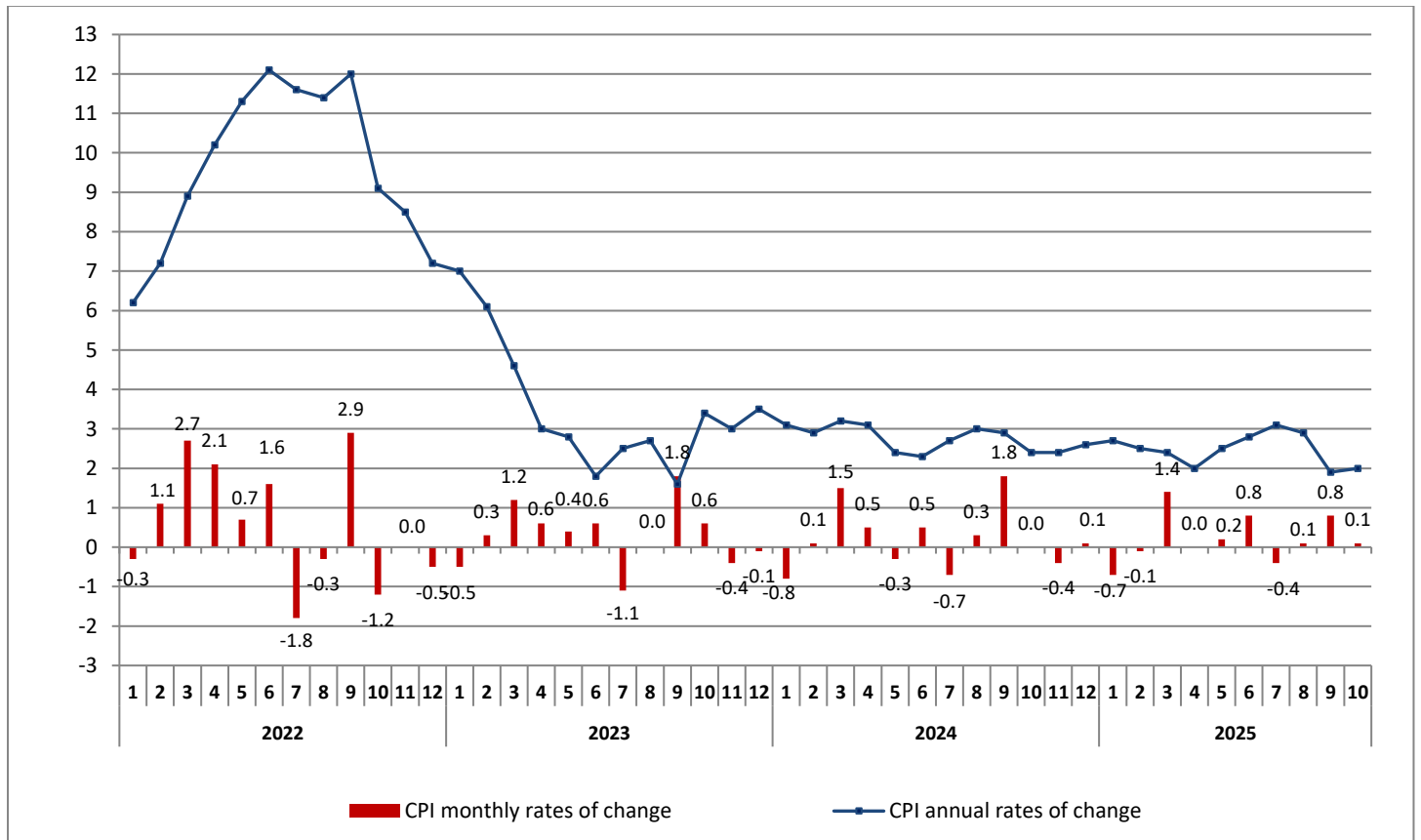


Table 2. Inflation – Annual rates of change of CPI**(Reference year: 2020=100.0)****I: October 2025/2024**

Main groups of goods and services		October		Rate of change (%)	Impact
		2025	2024		
1.	Food and non-alcoholic beverages	135.02	131.93	2.3	0.4898
2.	Alcoholic beverages and tobacco	107.97	106.08	1.8	0.0590
3.	Clothing and footwear	131.45	129.00	1.9	0.0959
4.	Housing	126.27	124.51	1.4	0.1906
5.	Household equipment	114.97	114.20	0.7	0.0288
6.	Health	112.45	111.72	0.6	0.0502
7.	Transport	123.30	122.44	0.7	0.1016
8.	Communication	94.06	93.33	0.8	0.0325
9.	Recreation and culture	107.65	106.54	1.0	0.0422
10.	Education	112.54	109.51	2.8	0.0961
11.	Hotels-Cafés-Restaurants	129.28	121.40	6.5	0.7641
12.	Miscellaneous goods and services	108.24	107.69	0.5	0.0348
Overall Index		122.16	119.79	2.0	

II: October 2024/2023

Main groups of goods and services		October		Rate of change (%)	Impact
		2024	2023		
1.	Food and non-alcoholic beverages	131.93	130.04	1.5	0.3199
2.	Alcoholic beverages and tobacco	106.08	104.84	1.2	0.0483
3.	Clothing and footwear	129.00	122.91	5.0	0.2762
4.	Housing	124.51	120.85	3.0	0.3704
5.	Household equipment	114.20	114.70	-0.4	-0.0195
6.	Health	111.72	107.89	3.6	0.2757
7.	Transport	122.44	121.99	0.4	0.0572
8.	Communication	93.33	92.10	1.3	0.0582
9.	Recreation and culture	106.54	104.98	1.5	0.0606
10.	Education	109.51	106.56	2.8	0.1191
11.	Hotels-Cafés-Restaurants	121.40	114.45	6.1	0.6493
12.	Miscellaneous goods and services	107.69	105.28	2.3	0.1616
Overall Index		119.79	117.00	2.4	

Note: The indices are rounded up to two decimal figures when published and percentage changes up to one decimal figure when published.

Table 3. Comparisons of the overall CPI
(Reference year: 2020=100.0)

Year and month	Overall Index	Monthly rates of change %	Annual rates of change Inflation %	Annual average index (moving average)	Annual average rates of change %
2022 : 1	104.68	-0.3	6.2	101.74	1.9
2	105.84	1.1	7.2	102.33	2.6
3	108.75	2.7	8.9	103.07	3.5
4	111.08	2.1	10.2	103.92	4.4
5	111.80	0.7	11.3	104.87	5.3
6	113.62	1.6	12.1	105.89	6.2
7	111.54	-1.8	11.6	106.86	7.1
8	111.21	-0.3	11.4	107.81	7.9
9	114.48	2.9	12.0	108.83	8.7
10	113.16	-1.2	9.1	109.61	9.2
11	113.15	0.0	8.5	110.36	9.5
12	112.53	-0.5	7.2	110.99	9.6
Annual average	110.99	-	-	110.99	9.6
2023 : 1	111.99	-0.5	7.0	111.60	9.7
2	112.33	0.3	6.1	112.14	9.6
3	113.73	1.2	4.6	112.55	9.2
4	114.45	0.6	3.0	112.83	8.6
5	114.91	0.4	2.8	113.09	7.8
6	115.62	0.6	1.8	113.26	7.0
7	114.30	-1.1	2.5	113.49	6.2
8	114.26	0.0	2.7	113.74	5.5
9	116.34	1.8	1.6	113.90	4.7
10	117.00	0.6	3.4	114.22	4.2
11	116.57	-0.4	3.0	114.50	3.8
12	116.47	-0.1	3.5	114.83	3.5
Annual average	114.83	-	-	114.83	3.5
2024 : 1	115.50	-0.8	3.1	115.12	3.2
2	115.61	0.1	2.9	115.40	2.9
3	117.39	1.5	3.2	115.70	2.8
4	117.96	0.5	3.1	116.00	2.8
5	117.66	-0.3	2.4	116.23	2.8
6	118.24	0.5	2.3	116.44	2.8
7	117.38	-0.7	2.7	116.70	2.8
8	117.68	0.3	3.0	116.98	2.9
9	119.76	1.8	2.9	117.27	3.0
10	119.79	0.0	2.4	117.50	2.9
11	119.33	-0.4	2.4	117.73	2.8
12	119.47	0.1	2.6	117.98	2.7
Annual average	117.98	-	-	117.98	2.7
2025 : 1	118.66	-0.7	2.7	118.24	2.7
2	118.55	-0.1	2.5	118.49	2.7
3	120.25	1.4	2.4	118.73	2.6
4	120.28	0.0	2.0	118.92	2.5
5	120.57	0.2	2.5	119.16	2.5
6	121.51	0.8	2.8	119.44	2.6
7	121.00	-0.4	3.1	119.74	2.6
8	121.07	0.1	2.9	120.02	2.6
9	122.06	0.8	1.9	120.21	2.5
10	122.16	0.1	2.0	120.41	2.5

Note: The indices are rounded up to two decimal figures when published and percentage changes up to one decimal figure when published.

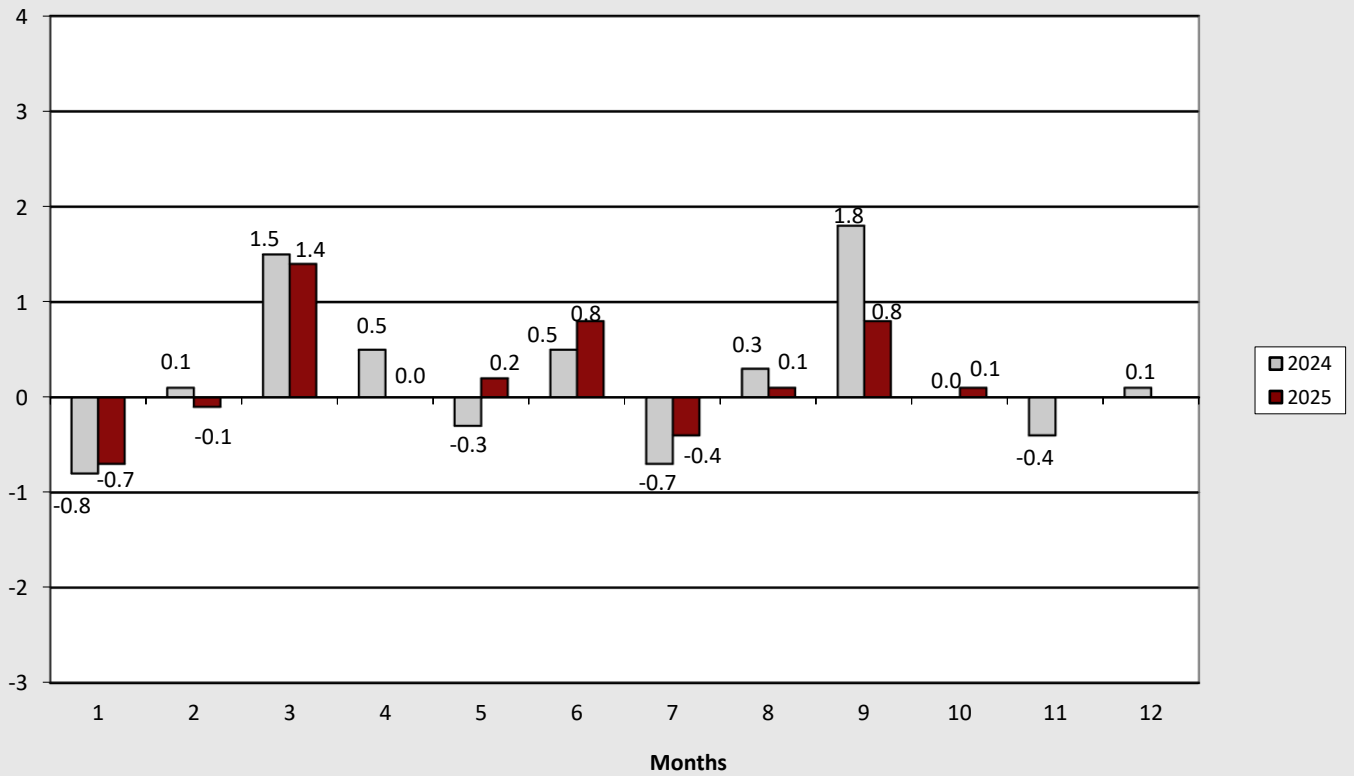
**Table 4. Major price changes from index comparison between
October 2025 and September 2025 and their impact
on the Overall CPI**

Goods and services	Rate of change (%)	Impact
Other bakery products	2.1	0.01
Beef	5.3	0.10
Pork	1.6	0.01
Lamb and goat	3.4	0.02
Fresh fruit	3.6	0.06
Fresh vegetables	2.5	0.03
Fresh fish	-4.0	-0.04
Olive oil	-2.7	-0.02
Preserved or processed vegetables	-1.4	0.01
Coffee	-2.1	-0.01
Alcoholic beverages (not served)	0.8	0.01
Clothing and footwear	-2.0	-0.10
Rentals for dwellings	0.4	0.02
Electricity	2.0	0.07
Heating oil	-2.2	-0.04
Household furniture	4.7	0.01
Non-durable household articles	1.0	0.02
Medical-dental and paramedical services	0.7	0.01
Hospital care	0.6	0.02
Petrol	-0.7	-0.03
Other services for motocars - motorcycles	-0.9	-0.01
Passenger transport by air	-9.8	-0.22
Telephone services	-0.4	-0.01
Cultural services	6.0	0.03
Restaurants-confectioneries-cafes-buffets	1.2	0.14
Hotels-motels-inns	-6.7	-0.04
Hairdressing salons and personal grooming establishments	1.1	0.01

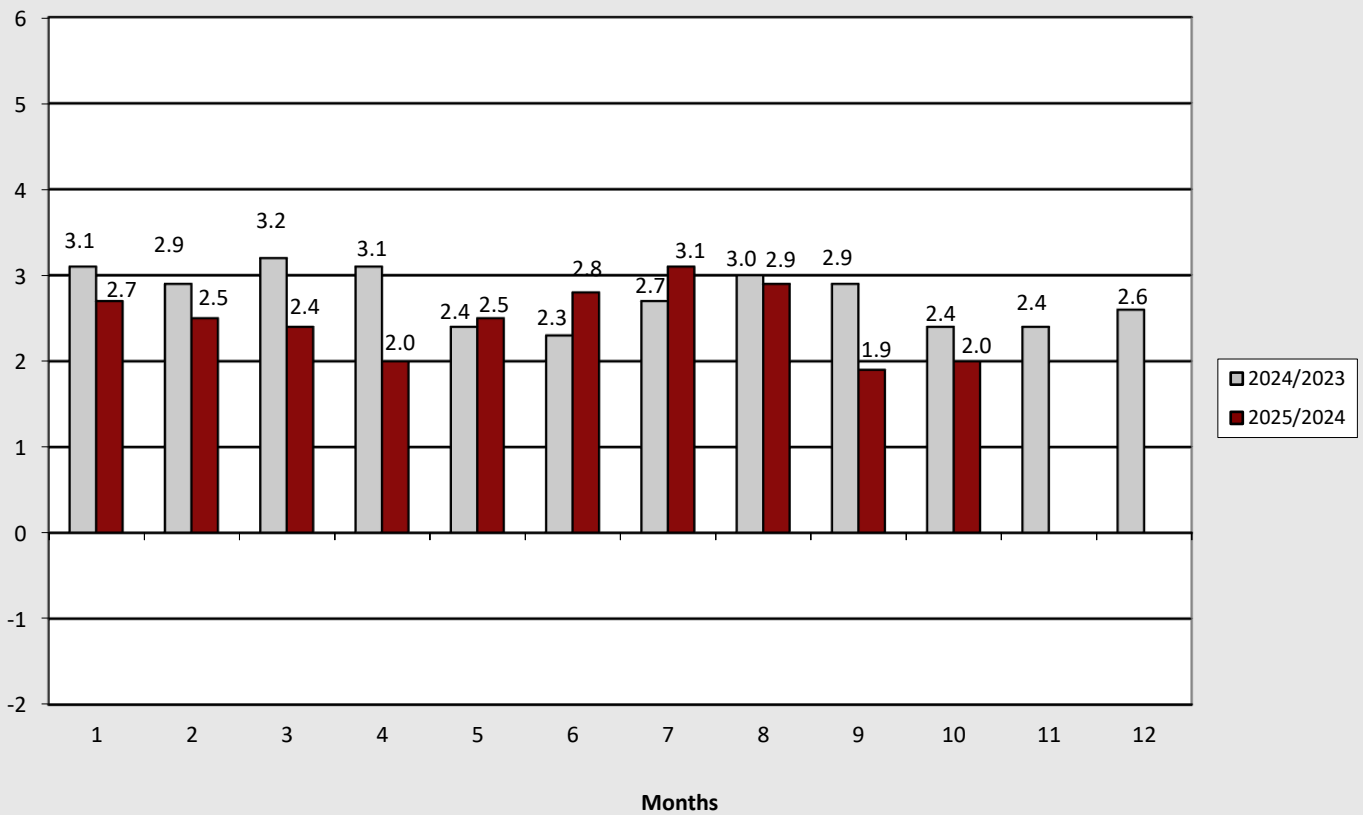
**Table 5. Major price changes from index comparison between
October 2025 and October 2024 and their impact on the Overall CPI**

Goods and services	Rate of change (%)	Impact
Bread and cereals	1.4	0.04
Meat	10.6	0.48
Fresh fish	4.0	0.04
Milk-cheese and eggs	4.4	0.14
Fruit	9.1	0.16
Chocolates-chocolate products	21.1	0.05
Confectionery products	6.1	0.02
Coffee	19.3	0.09
Fruit and vegetable juices	5.7	0.01
Olive oil	-36.9	-0.40
Vegetables	-5.6	-0.17
Alcoholic beverages (not served)	2.2	0.04
Cigarettes	1.5	0.02
Clothing and footwear	1.9	0.10
Rentals for dwellings	8.9	0.34
Services for the repair and maintenance of the dwelling	5.9	0.04
Miscellaneous services relating to the dwelling	2.2	0.06
Electricity	-3.3	-0.10
Natural gas	-6.3	-0.06
Heating oil	-4.3	-0.09
Domestic services	4.8	0.04
Household appliances and repair	-1.7	-0.01
Medical-dental and paramedical services	2.7	0.06
Hospital care	0.7	0.02
Pharmaceutical products	-0.9	-0.02
New motorcars	2.4	0.05
Spare parts and accessories for motorcars	4.1	0.02
Maintenance and repair of motorcars - motorcycles	6.0	0.04
Other services for motorcars - motorcycles	3.1	0.05
Passenger transport by air	5.8	0.11
Second hand motorcars	-4.9	-0.06
Fuels and lubricants	-1.6	-0.10
Telephone services	1.0	0.04
Major durables for recreation and culture	2.2	0.02
Cultural services	6.4	0.03
Package holidays	6.8	0.01
Audiovisual and information processing equipment	-5.7	-0.04
Pre-primary and primary education	3.2	0.03
Secondary education	3.2	0.06
Restaurants-confectioneries-cafes-buffets	7.8	0.86
Hotels-motels-inns	-16.3	-0.10
Hairdressing salons and personal grooming establishments	4.1	0.05
Private insurance connected with health	7.0	0.04
Other services	4.8	0.02
Other appliances and articles for personal care	-2.5	-0.07
Motor vehicle insurance	-1.0	-0.01

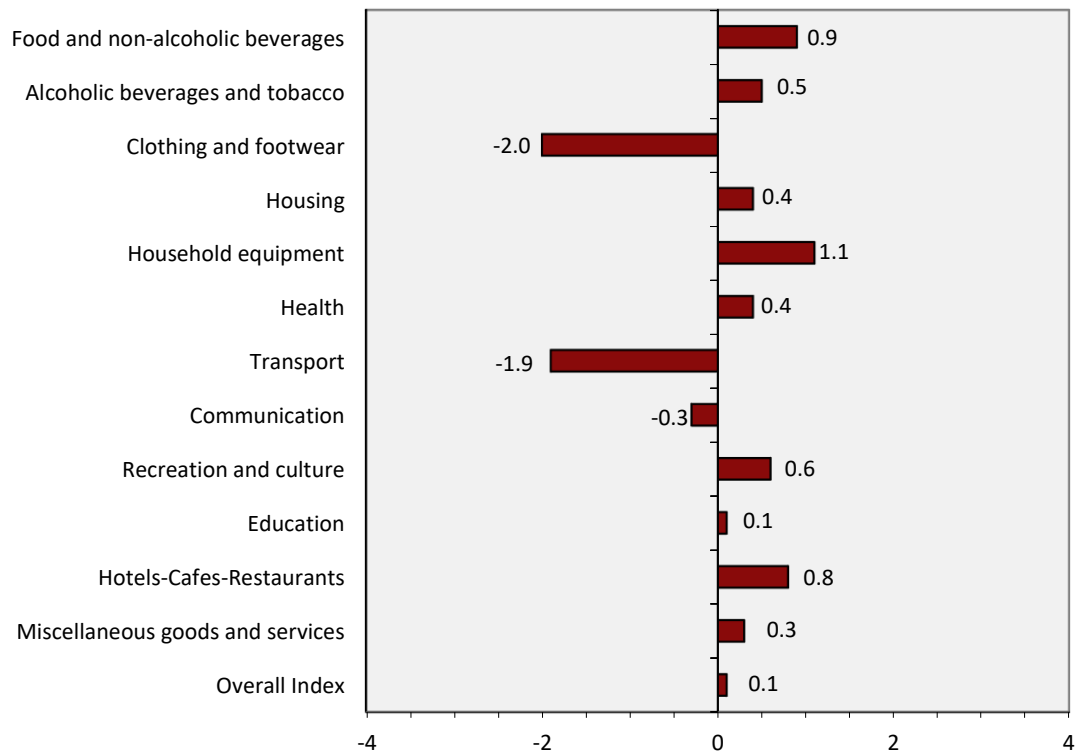
Graph 3. Monthly rates of change (%) of the overall CPI, 2024 and 2025



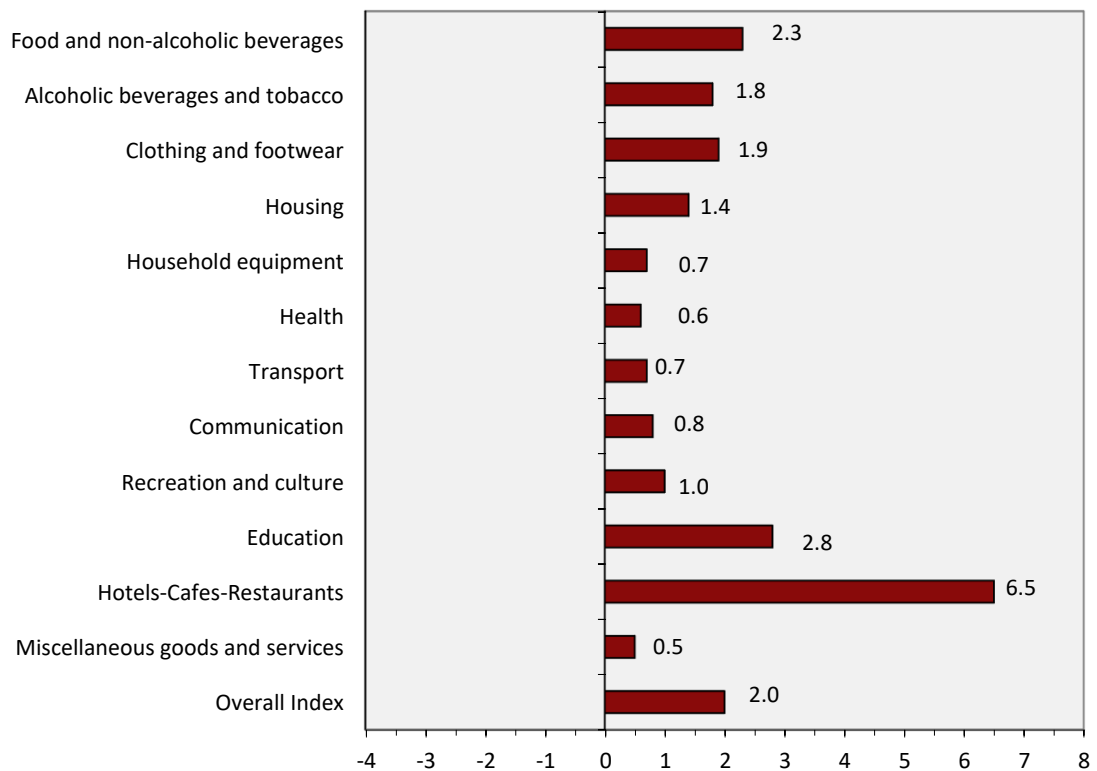
Graph 4. Annual rates of change (%) of the overall CPI, 2024 and 2025



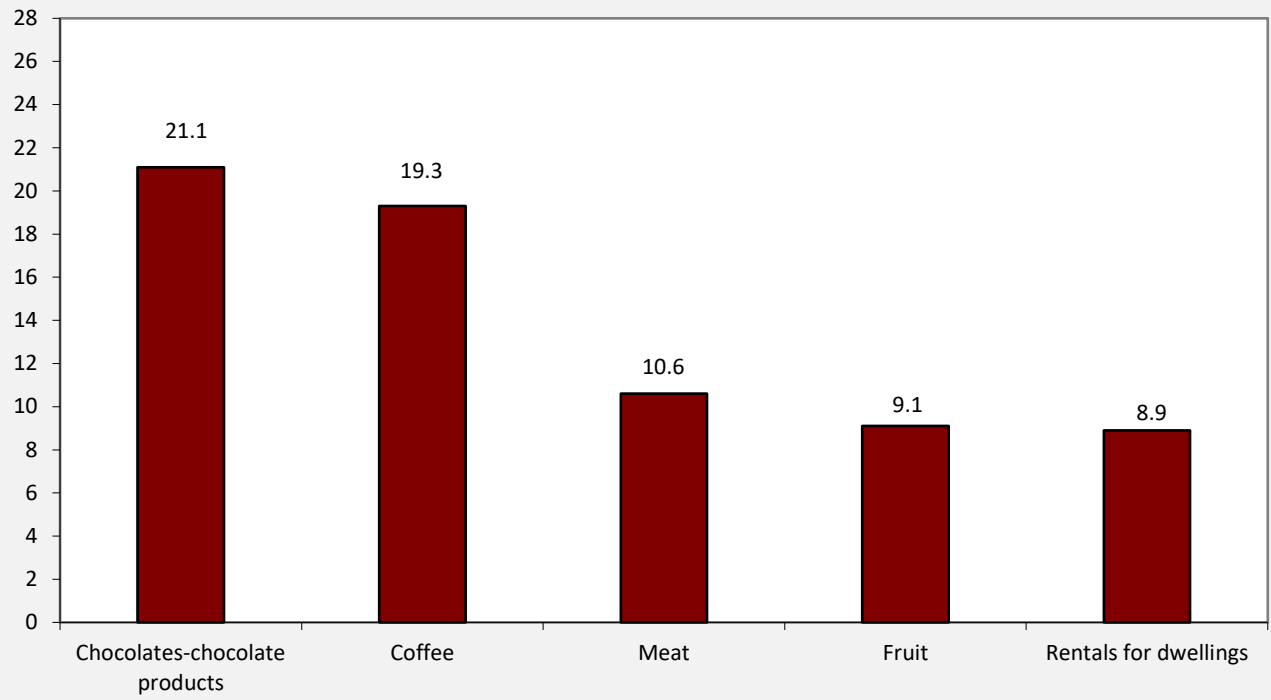
Graph 5. Monthly rates of change (%) of CPI between October 2025 and September 2025



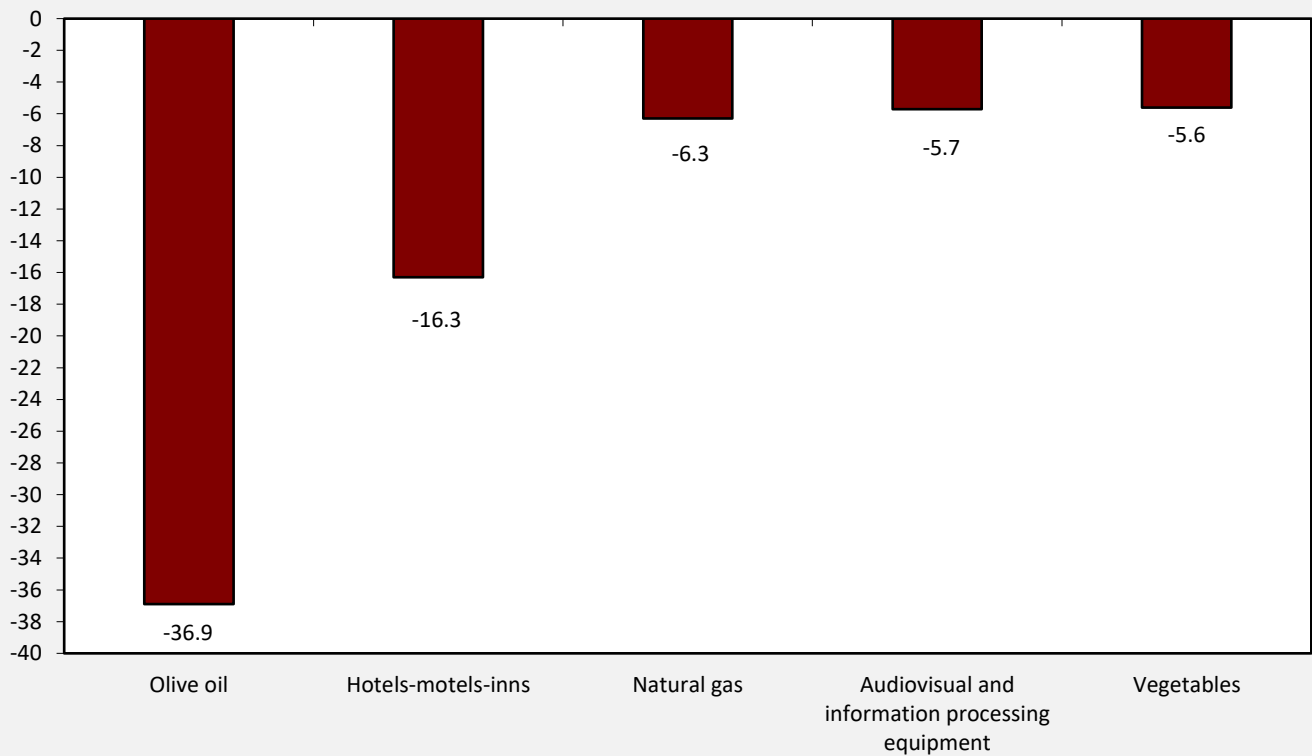
Graph 6. Annual rates of change (%) of CPI between October 2025 and October 2024



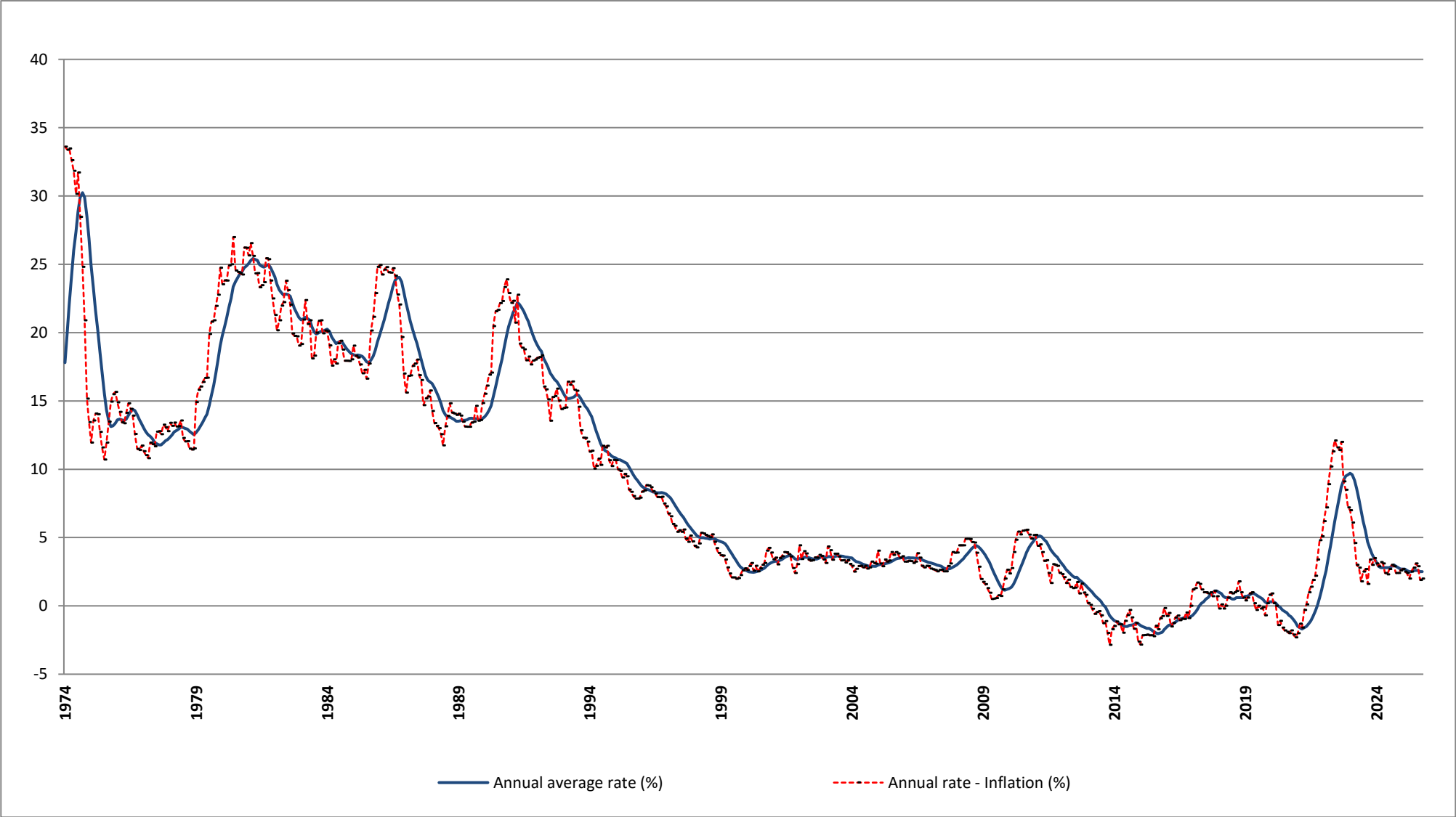
Graph 7. CPI highest annual increases (%)



Graph 8. CPI highest annual decreases (%)



Graph 9. Historical evolution of CPI, 1974 – 2025



METHODOLOGICAL NOTES

Generally	The Consumer Price Index (CPI) is compiled by the Hellenic Statistical Authority (ELSTAT) since 1959. Until the year 2000, the CPI referred to the urban areas of the Country, while from 2001 onwards it refers to the whole Country covering urban, semi-urban and rural areas.
Purpose of the index	The purpose of the CPI is to measure the general level of prices of goods and services purchased by the average Greek household.
Legal basis	Law 3832/2010 .
Reference period	Month.
Base	December of the previous year.
Reference year	2020=100.0.
Chain linking Index	The CPI index follows the chain linking method, introducing new weights annually and having as a base the December of the previous year. The weights are estimated on the basis of the most recent available data of the Household Budget Survey (HBS), extrapolated to the prices of December. The CPI, adjusted on an annual basis to the most recent consumption expenditure pattern of the private households of the Country, ensures the representativeness of goods and services, which compose the “basket” of purchases of the average household.
Geographical and population coverage of the CPI	The CPI refers to the whole Country and covers the resident households of the territory excluding collective households (hospitals, homes for the elderly, boarding houses, prisons, etc.) and non-resident households (tourists) in the Country.
Classification of items	The classification of the CPI items (goods and services) is based on the international classification COICOP (Classification of Individual Consumption by Purpose) as this has been adapted to the needs of the HICPs of the EU Member States with the COICOP5/HICP classification.
Weights of items	The weights of CPI items are updated every year, on the basis of the most recent available data of HBS. The weights are calculated as the share (%) of the expenditures for each group, subgroup and item (good or service) to the total household expenditure of the average household.
Price collection Cities	The CPI prices are collected in 27 cities with representative markets for the coverage of the 13 Regions of the Country. The selection criteria of the price collection cities are the size and the particularities of their markets, the possibility of continuous price collection, the comparability of the index and the cost of price collection.
Population weights	The calculation of the population weights by regions is based on the population data of the 2021 General Population Census and the expenditure data of the latest available HBS by regions.
Selection of items	The composition of the "household basket" i.e. the selection of goods and services which are included in the calculation of CPI is updated annually, using the results of the latest available HBS, other market research, etc. The chain linking methodology allows the change of items of the household basket on an annual basis, in order to ensure the representativeness of the items involved in the calculation of groups and subgroups of CPI.
Price collection-Outlets	The prices collection outlets are retail stores, enterprises providing services, street markets etc. which are considered representative of the branches of shops, where the households make their purchases in the 27 selected cities. The methodology allows the renewal of price collection sources, annually, in order to maintain their representativeness in the calculation of CPI. Prices are collected by employees of ELSTAT as well as by external price collectors, hired on a temporary basis. They pay a visit to the selected outlets within a specific time period of a month (monthly prices) or on a specific day of the week (weekly prices). The collected prices correspond to the prices actually faced by the consumer.
Specification-Substitution of items	All the collected items are defined by the specification, that is the particular characteristics which determine the quality, the trade show and the identity, in general, of good products (such as brand, weight, package etc), in order to avoid any price variations attributable to differences in the specification. Once a specified item (good or service) is no longer available in the market or has ceased to be important, as regards consumption, it is substituted by a newly specified item, which has taken its place in the market.

Calculation of the Consumer Price Index

The Consumer Price Index is a Laspeyres-type index and it is calculated based on December of the previous year.

Implementation of formula in five-digit level of COICOP5

Specifically, if the five-digit item h includes q price collected items, then its index in month t of year T , $R_h^{t,T}$, is given by the following formula:

$$R_h^{t,T} = R_h^{12,T-1} \left[\frac{\sum_{i=1}^q w_i^T R_i^{t,T} / R_i^{12,T-1}}{\sum_{i=1}^q w_i^T} \right],$$

where:

$R_h^{12,T-1}$ = the index of the five-digit item h , in December of year $T-1$.

w_i^T = the weight of the price collected item i , in year T .

$R_i^{t,T}$ = the index of the price collected item i , in month t of year T .

$R_i^{12,T-1}$ = the index of the price collected item i , in December of year $T-1$.

A similar methodology is followed for the calculation of indices in the upper levels (two-digit, three-digit and four-digit) of COICOP5 and the calculation of the overall CPI as well.

Publication of data The published CPI time series (reference year 2020=100.0), covers the period from January 1959 onwards. The CPI data are released each month as scheduled, in accordance with the Releases Calendar of ELSTAT, with the [Release and the tables](#).

References Further information concerning the methodology and the compilation of the CPI is available in the [Single Integrated Metadata Structure \(SIMS\)](#).